

DATE IN 9-28-11	SUSPENSE	ENGINEER DB	LOGGED IN 9, 30/11	TYPE NSL	APP NO. 1127348211
--------------------	----------	----------------	-----------------------	-------------	-----------------------

ABOVE THIS LINE FOR DIVISION USE ONLY

NEW MEXICO OIL CONSERVATION DIVISION
- Engineering Bureau -
1220 South St. Francis Drive, Santa Fe, NM 87505



Chesapeake
PLV Big Links 15 25 30
USA #1H

ADMINISTRATIVE APPLICATION CHECKLIST

THIS CHECKLIST IS MANDATORY FOR ALL ADMINISTRATIVE APPLICATIONS FOR EXCEPTIONS TO DIVISION RULES AND REGULATIONS WHICH REQUIRE PROCESSING AT THE DIVISION LEVEL IN SANTA FE

Application Acronyms:

[NSL-Non-Standard Location] [NSP-Non-Standard Proration Unit] [SD-Simultaneous Dedication]
[DHC-Downhole Commingling] [CTB-Lease Commingling] [PLC-Pool/Lease Commingling]
[PC-Pool Commingling] [OLS - Off-Lease Storage] [OLM-Off-Lease Measurement]
[WFX-Waterflood Expansion] [PMX-Pressure Maintenance Expansion]
[SWD-Salt Water Disposal] [IPI-Injection Pressure Increase]
[EOR-Qualified Enhanced Oil Recovery Certification] [PPR-Positive Production Response]

[1] TYPE OF APPLICATION - Check Those Which Apply for [A]

[A] Location - Spacing Unit - Simultaneous Dedication
☒ NSL ☐ NSP ☐ SD

Check One Only for [B] or [C]

[B] Commingling - Storage - Measurement
☐ DHC ☐ CTB ☐ PLC ☐ PC ☐ OLS ☐ OLM

[C] Injection - Disposal - Pressure Increase - Enhanced Oil Recovery
☐ WFX ☐ PMX ☐ SWD ☐ IPI ☐ EOR ☐ PPR

[D] Other: Specify _____

[2] NOTIFICATION REQUIRED TO: - Check Those Which Apply, or ☐ Does Not Apply

[A] ☐ Working, Royalty or Overriding Royalty Interest Owners

[B] ☒ Offset Operators, Leaseholders or Surface Owner

[C] ☐ Application is One Which Requires Published Legal Notice

[D] ☐ Notification and/or Concurrent Approval by BLM or SLO
U.S. Bureau of Land Management - Commissioner of Public Lands, State Land Office

[E] ☐ For all of the above, Proof of Notification or Publication is Attached, and/or,

[F] ☐ Waivers are Attached

[3] SUBMIT ACCURATE AND COMPLETE INFORMATION REQUIRED TO PROCESS THE TYPE OF APPLICATION INDICATED ABOVE.

[4] **CERTIFICATION:** I hereby certify that the information submitted with this application for administrative approval is **accurate** and **complete** to the best of my knowledge. I also understand that **no action** will be taken on this application until the required information and notifications are submitted to the Division.

Note: Statement must be completed by an individual with managerial and/or supervisory capacity.

Ocean Munds-Dry Ocean Munds-Dry a thorney 9-26-11
Print or Type Name Signature Title Date
omundsdry@hollandhart.com
e-mail Address



RECEIVED OGD

2011 SEP 28 P 3:05

September 28, 2011

HAND-DELIVERED

Jami Bailey, Director
Oil Conservation Division
New Mexico Department of Energy,
Minerals and Natural Resources
1220 South Saint Francis Drive
Santa Fe, New Mexico 87505

Re: Application of Chesapeake Operating, Inc. for administrative approval of an unorthodox well location for its PLU Big Sinks 15 25 30 USA Well No. 1H to be drilled from a surface location and penetration point 10 feet from the North line and 1980 feet from the West line of Section 22 and a bottomhole location 350 feet from the North line and 1980 feet from the West line of Section 15, Township 25 South, Range 30 East, NMPM, Eddy County, New Mexico.

Dear Ms. Bailey:

Chesapeake Operating, Inc. ("Chesapeake") hereby seeks administrative approval pursuant to the provisions of Division Rules 19.15.15.13 and 19.15.16.14 for an unorthodox well location for its PLU Big Sinks 15 25 30 USA Well No. 1H. This wildcat well is located in Section 15, Township 25 South, Range 30 East, N.M.P.M., Eddy County, New Mexico and is to be drilled in the Bone Spring formation at a surface location and a penetration point 10 feet from the North line and 1980 feet from the West line of Section 22 and a bottomhole location 350 feet from the North and 1980 feet from the West line of Section 15, Eddy County, New Mexico. A 163.2-acre project area has been dedicated to this horizontal well comprised of the E/2 W/2 of Section 15, and the NE/4 NW/4 of Section 22.

This location is unorthodox because the Bone Spring formation under this acreage is governed by the Division's statewide rules which provide for wells on 40-acre spacing units to be located no closer than 330 feet to the outer boundary of the spacing unit. Division Rule 19.15.16.14 defines the "Penetration Point" as "the point where the wellbore penetrates the top of the pool from which it is intended to produce." The wellbore penetrates the Bone Spring formation at a point 10 feet from the North line of Section 22; it is, therefore, closer than allowed by Division rules.

HOLLAND & HART^{LLP}



Although the wellbore penetrates the top of the Bone Spring at an unorthodox location, the well will be at a standard location at the producing interval. Chesapeake is targeting the Lower Avalon at approximately 8,319 feet (TVD). Therefore, once Chesapeake reaches the targeted formation, it will be at a standard location. The wellbore will be cased and not perforated until it reaches the producing area.

Exhibit A is a plat showing the location of the well. This location is encroaching to the south of Section 15. This location is within the Poker Lake Unit which is operated by BOPCo. A copy of this application with all attachments was mailed to BOPCo. and they were advised that if they have an objection to this application it must be filed in writing with the Division's Santa Fe office within twenty days from the date notice was sent. BOPCo. was also advised that if no objections were received by the Division within twenty days, the Division Director could approve the application.

Exhibit B is the C-102 for this well.

Exhibit C is the notice list.

Your attention to this application is appreciated.

Sincerely,

Ocean Munds-Dry

ATTORNEY FOR

CHESAPEAKE OPERATING, INC.

Enclosures

cc: OCD District Office - Artesia



DISTRICT I

1025 N. French Dr., Hobbs, NM 88240

DISTRICT II

1301 W. Grand Avenue, Artesia, NM 88210

DISTRICT III

1000 Rio Brazos Rd., Aztec, NM 87410

DISTRICT IV

1220 S. St. Francis Dr., Santa Fe, NM 87505

State of New Mexico
Energy, Minerals and Natural Resources Department

OIL CONSERVATION DIVISION

1220 South St. Francis Dr.
Santa Fe, New Mexico 87505

Form C-102

Revised July 18, 2010

Submit one copy to appropriate
District Office

WELL LOCATION AND ACREAGE DEDICATION PLAT

☐ AMENDED REPORT

API Number	Pool Code 96403	Pool Name WILDCAT; BONE SPRING
Property Code	Property Name PLU BIG SINKS 15 25 30 USA	Well Number 1H
OGRID No. 147179	Operator Name CHESAPEAKE OPERATING CO.	Elevation 3339'

Surface Location

UL or lot No.	Section	Township	Range	Lot Idn	Feet from the	North/South line	Feet from the	East/West line	County
C	22	25 S	30 E		10	NORTH	1980	WEST	EDDY

Bottom Hole Location If Different From Surface

UL or lot No.	Section	Township	Range	Lot Idn	Feet from the	North/South line	Feet from the	East/West line	County
C	15	25 S	30 E		350	NORTH	1980	WEST	EDDY

Dedicated Acres	Joint or Infill	Consolidation Code	Order No.
163.02			

NO ALLOWABLE WILL BE ASSIGNED TO THIS COMPLETION UNTIL ALL INTERESTS HAVE BEEN CONSOLIDATED
OR A NON-STANDARD UNIT HAS BEEN APPROVED BY THE DIVISION

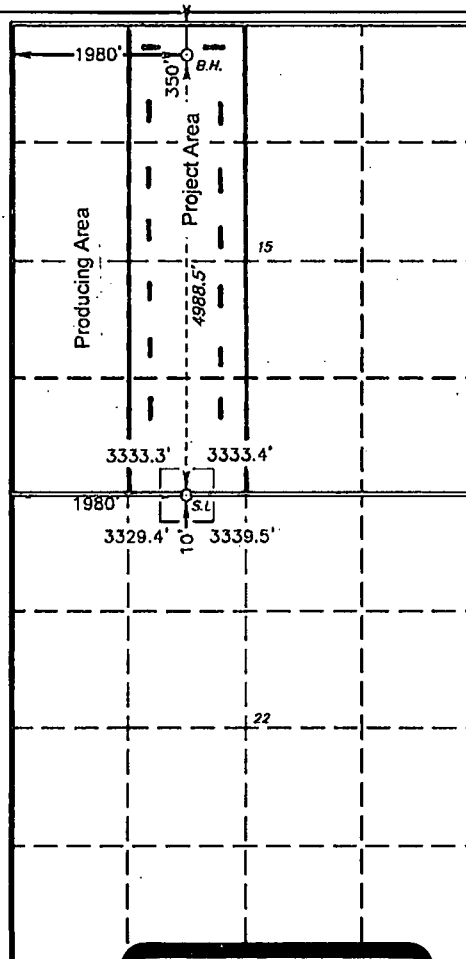
PROPOSED BOTTOM
HOLE LOCATION

Lat - N 32.1367778'
Long - W 103.8711944'
NMSPCE- N 413802.792
E 684382.667
(NAD-83)
Lat - N 32.13665503'
Long - W 103.87071224'
NMSPCE- N 413744.558
E 643197.658
(NAD-27)

Projected Penetration Point
Top Bone Spring formation:
10' FSL/1980' FWL of Sec. 15

SURFACE LOCATION

Lat - N 32.12308940'
Long - W 103.8711942'
NMSPCE- N 408815.491
E 684404.128
(NAD-83)
Lat - N 32.12294525'
Long - W 103.87071260'
NMSPCE- N 408757.366
E 643218.961
(NAD-27)



OPERATOR CERTIFICATION

I hereby certify that the information contained herein is true and complete to the best of my knowledge and belief, and that this organization either owns a working interest or unleased mineral interest in the land including the proposed bottom hole location or has a right to drill this well at this location pursuant to a contract with an owner of such a mineral or working interest, or to a voluntary pooling agreement or a compulsory pooling order heretofore entered by the division.

Signature Bryan Arrant Date 09/22/2011
Printed Name bryan.arrant@chk.com
Email Address _____

SURVEYOR CERTIFICATION

I hereby certify that the well location shown on this plat was plotted from field notes of actual surveys made by me or under my supervision and that the same is true and correct to the best of my belief.

Date Surveyed AUGUST 15, 2011
Signature & Seal of Professional Surveyor
GARY L. JONES
Professional Surveyor No. 24821

Certificate No. Gary L. Jones 7977

BASIN SURVEYS 24821

EXHIBIT

tabbles

B

Exhibit C

Chesapeake's NSL Application
PLU Big Sinks 15 25 30 USA Well No. 1H

BOPCo., LP
201 W. Main Street Suite 3100
Fort Worth, Texas 76102





September 28, 2011

CERTIFIED MAIL
RETURN RECEIPT REQUESTED**TO AFFECTED PARTIES**

Re: Application of Chesapeake Operating, Inc. for administrative approval of an unorthodox well location for its PLU Big Sinks 15 25 30 USA Well No. 1H to be drilled from a surface location and penetration point 10 feet from the North line and 1980 feet from the West line of Section 22 and a bottomhole location 350 feet from the North line and 1980 feet from the West line of Section 15, Township 25 South, Range 30 East, NMPM, Eddy County, New Mexico.

Ladies and Gentlemen:

Enclosed is a copy of the above-referenced application which was filed with the New Mexico Oil Conservation Division on this date by Chesapeake Operating Co. for administrative approval of an unorthodox well location for its PLU Big Sinks 15 25 30 USA Well No. 1H. This wildcat well is located in Section 15, Township 25 South, Range 30 East, N.M.P.M., to be drilled to the Bone Spring formation from a surface location and penetration point 10 feet from the North line and 1980 feet from the West line of Section 22 to a bottomhole location 350 feet from the North line and 1980 feet from the West line of Section 15, Eddy County, New Mexico.

As an owner of an interest that may be affected by the proposed well, you may object to this application. Objections must be filed in writing within twenty days from this date at the Division's Santa Fe office that is located at 1220 South Saint Francis Drive, Santa Fe, New Mexico. 87505. If no objection is received within this twenty-day period, this application for an unorthodox well location may be approved.

Sincerely,

Ocean Munds-Dry
Attorney for Chesapeake Operating Co.

Enclosures