

CHARLES W. KEMP
1701 E. HIGHLAND DR.
HOBBS, NEW MEXICO 88240

RECEIVED

September 25, 1989

SEP 26 1989

OIL CONSERVATION DIV.
SANTA FE

William J. LeMay
New Mexico Oil Conservation Div.
P.O. Box 2088
Santa Fe, NM 87501

Re: Application to Downhole Commingle
Stevens "B"15 Well #3
Unit N, Sec.15, T23S; R36E
Jalmat/Langlie Mattix 7-Rvrs. Queen

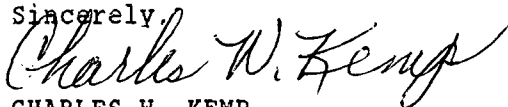
Dear Mr. LeMay

Charles W. Kemp respectfully requests administrative approval under provisions of Rule 303-C to downhole commingle production from the Jalmat Gas Pool and the Langlie Mattix Oil Pool within the Stevens "B"15 #3 well. This well is presently producing from the Langlie Mattix zone with artificial lift. Approval to commingle the two zones will allow this well to be produced which otherwise it would be unable to produce due to downhole communication.

This is a federal lease #LC-030556b and the interest is common in all depths.

The offset operators have been notified of this application by certified mail. A copy of this notification is attached.

Sincerely,



CHARLES W. KEMP
Operator

State of New Mexico
Energy, Minerals and Natural Resources Department

Form C-102
Revised 1-1-89

OIL CONSERVATION DIVISION

P.O. Box 2088
Santa Fe, New Mexico 87504-2088

Submit to Appropriate
District Office
State Lease - 4 copies
Fee Lease - 3 copies

DISTRICT I
P.O. Box 1980, Hobbs, NM 88240

DISTRICT II
P.O. Drawer DD, Artesia, NM 88210

DISTRICT III
1000 Rio Brazos Rd., Aztec, NM 87410

WELL LOCATION AND ACREAGE DEDICATION PLAT

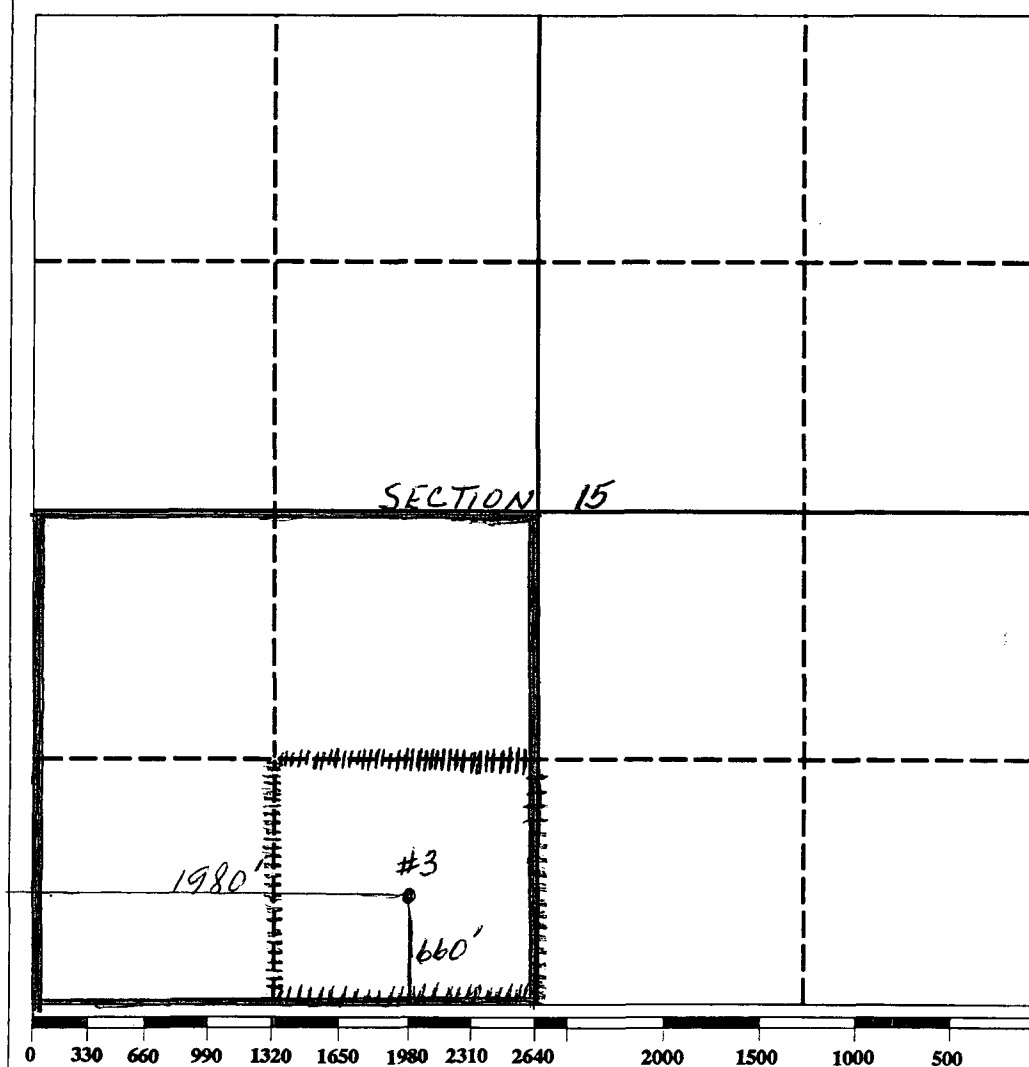
All Distances must be from the outer boundaries of the section

Operator CHARLES W. KEMP			Lease STEVENS "B"15		Well No. 3
Unit Letter N	Section 15	Township 23s	Range 36e	County LEA	NMPM

Actual Footage Location of Well:

660 feet from the South line and 1980 feet from the West line	Ground level Elev. 3388	Producing Formation Langlie Mattix	Pool Langlie Mattix 7-Rvrs. Queen	Dedicated Acreage: 40 Acres
---	----------------------------	---------------------------------------	--------------------------------------	--------------------------------

1. Outline the acreage dedicated to the subject well by colored pencil or hatchure marks on the plat below.
2. If more than one lease is dedicated to the well, outline each and identify the ownership thereof (both as to working interest and royalty).
3. If more than one lease of different ownership is dedicated to the well, have the interest of all owners been consolidated by communitization, unitization, force-pooling, etc.?
☐ Yes ☐ No If answer is "yes" type of consolidation _____
If answer is "no" list the owners and tract descriptions which have actually been consolidated. (Use reverse side of this form if necessary).
No allowable will be assigned to the well until all interests have been consolidated (by communitization, unitization, forced-pooling, or otherwise) or until a non-standard unit, eliminating such interest, has been approved by the Division.



OPERATOR CERTIFICATION

I hereby certify that the information contained herein is true and complete to the best of my knowledge and belief.

Signature <i>Charles W. Kemp</i>
Printed Name CHARLES W. KEMP
Position OPERATOR
Company CHARLES W. KEMP
Date 9-25-89

SURVEYOR CERTIFICATION

I hereby certify that the well location shown on this plat was plotted from field notes of actual surveys made by me or under my supervision, and that the same is true and correct to the best of my knowledge and belief.

Date Surveyed
Signature & Seal of Professional Surveyor
Certificate No.

WELL HISTORY

STEVENS "B"15 #3

Drilling of subject well was completed by Conoco on 5-15-1961. A string of 2-7/8" 6.5# casing was run to a depth of 3499' and a string of 4-1/2" 9.5# J-55 casing was run to a depth of 3694' in a common well bore.

This well was completed in the Langlie Mattix oil zone in the 4-1/2" casing perforated @ 3642-47'; 3678-80' with 4 JSPF for a total of 36 holes. It was acidized with 1000 gal. 15% acid followed by 10,000 gal oil frac with 15000# sand and 500# adomite. The initial test flowed 10 bbls. oil + 5 bbls. water per day.

The Jalmat gas zone was completed in 2-7/8" casing from 3066-84'; 3106-24'; 3144-54'; 3196-3202'; 3256-66'; 3330-36'; 3396-3404' for a total of 152 holes. Zone was treated with 2500 gal. 15% acid followed by 12000 gal oil frac, 12000# sand and 600# adomite. Calculated open flow potential 1950 MCFGPD.

Communication exists between the Langlie Mattix zone and the Jalmat zone. The zones have been squeezed several times and re-perforated and treated. Communication still exists. Well shut in 3-1-62.

Accumulative production of the Langlie Mattix zone is 1255 bbls. oil, 1567 water and 66 MCFG.

The Jalmat zone was not produced because segregation of the two zones was not accomplished.

Both zones were shut in 8-15-89 with 24 hr. shutin pressure of 210# on both zones. The Jalmat zone was tested 9-16-89 for 24 hrs. making 10 MCFG and no fluid. The Jalmat was shut in and Langlie Mattix zones tested 9-17-89 for 13 bbls. fluid of which 6 bbls. oil and 7 bbls water with 18 MCFG on 24 hr. test.

Fluids in the two zones are compatible.

Value of the crude will not be affected by commingling.

Commingling will not effect any secondary recovery.

Allocation of production to each zone is determined by well tests as shown on attached C-116.

[illegible]

Submit 2 copies to Appropriate District Office.

DISTRICT I

P.O. Box 1980, Hobbs, NM 88240

DISTRICT II

P.O. Drawer DD, Artesia, NM 88210

DISTRICT III

1000 Rio Brazos Rd., Aztec, NM 87410

State of New Mexico
Energy, Minerals and Natural Resources Department

Form C-116
Revised 1/1/89

OIL CONSERVATION DIVISION

P.O. Box 2088

Santa Fe, New Mexico 87504-2088

GAS - OIL RATIO TEST

Operator	CHARLES W. KEMP		Pool		JALMAT		County		LEA						
Address	1701 E. Highland Dr.		Hobbs, NM 88240		TYPE OF TEST - (X)		Scheduled <input type="checkbox"/>		Completion <input type="checkbox"/>		Special <input checked="" type="checkbox"/>				
LEASE NAME	WELL NO.	LOCATION				DATE OF TEST	CHOKE SIZE	TBG. PRESS.	DAILY ALLOW-ABLE	LENGTH OF TEST HOURS	PROD. DURING TEST			GAS - OIL RATIO CU FT/BBL.	
		U	S	T	R						WATER BBLs.	GRAV. OIL	OIL BBLs.		GAS MCF.
STEVENS "B"15	3	N	15	23	36	8-16-89		10#		24	0	0	0	10	-

Instructions:

During gas-oil ratio test, each well shall be produced at a rate not exceeding the top unit allowable for the pool in which well is located by more than 25 percent. Operator is encouraged to take advantage of this 25 percent tolerance in order that well can be assigned increased allowables when authorized by the Division.

Gas volumes must be reported in MCF measured at a pressure base of 15.025 psia and a temperature of 60° F. Specific gravity base will be 0.60.

Report casing pressure in lieu of tubing pressure for any well producing through casing.

(See Rule 301, Rule 1116 & appropriate pool rules.)

I hereby certify that the above information is true and complete to the best of my knowledge and belief.

Charles W. Kemp
Signature

CHARLES W. KEMP - Operator
Printed name and title

9-25-89
Date

Telephone No.

Submit 2 copies to Appropriate
District Office.
DISTRICT I
P.O. Box 1980, Hobbs, NM 88240
DISTRICT II
P.O. Drawer DD, Artesia, NM 88210
DISTRICT III
1000 Rio Brazos Rd., Aztec, NM 87410

State of New Mexico
Energy, Minerals and Natural Resources Department

Form C-116
Revised 1/1/89

OIL CONSERVATION DIVISION

P.O. Box 2088
Santa Fe, New Mexico 87504-2088

GAS - OIL RATIO TEST

Operator CHARLES W. KEMP		Pool LANGLIE MATTIX		County LEA											
Address 1701 E. Highland Dr.		Hobbs, NM 88240		TYPE OF TEST - (X) <input type="checkbox"/> Scheduled <input type="checkbox"/> Completion <input type="checkbox"/> Special <input checked="" type="checkbox"/>											
LEASE NAME	WELL NO.	LOCATION				DATE OF TEST	CHOKE SIZE	TBG. PRESS.	DAILY ALLOW-ABLE	LENGTH OF TEST HOURS	PROD. DURING TEST			GAS - OIL RATIO CU.FT/BBL.	
		U	S	T	R						WATER BBL.	GRAV. OIL	OIL BBL.		GAS MCF.
STEVENS "B"15	3	N	15	23	36	8-17-89		10#		24	7	32	6	18	3000

Instructions:

During gas-oil ratio test, each well shall be produced at a rate not exceeding the top unit allowable for the pool in which well is located by more than 25 percent. Operator is encouraged to take advantage of this 25 percent tolerance in order that well can be assigned increased allowables when authorized by the Division.

Gas volumes must be reported in MCF measured at a pressure base of 15.025 psia and a temperature of 60° F. Specific gravity base will be 0.60.

Report casing pressure in lieu of tubing pressure for any well producing through casing.

(See Rule 301, Rule 1116 & appropriate pool rules.)

I hereby certify that the above information is true and complete to the best of my knowledge and belief.

Charles W. Kemp
Signature

CHARLES W. KEMP - Operator
Printed name and title

9-25-89
Date

Telephone No.

CHARLES W. KEMP
1701 E. HIGHLAND DR.
HOBBS, NEW MEXICO 88240
(505) 392-5364

September 25, 1989

CERTIFIED MAIL
RETURN RECEIPT REQUESTED

Offset Operators
STEVENS "B"15 LEASE
Lea County, NM

Dear Sirs:

In accordance with New Mexico Oil Conservation Division regulations, you are hereby notified of Charles W. Kemp's application to downhole commingle production from the Jalmat Gas Pool and the Langlie Mattix oil Pool within the Stevens "B"15 Well No. 3 located 660' FSL and 1980' FWL of Sec. 15, T23S; R36E, Lea County, New Mexico.

Very truly yours,

Charles W. Kemp
Charles W. Kemp
Operator

CHARLES W. KEMP
Application to Downhole Commingle
Stevens "B"15 #3
Unit N, Sec.15, T23S; R36E
Jalmat & Langlie Mattix Pools

OFFSET OPERATORS

General Operating Co.
P.O. Box 877
Wichita Falls, Tx 76307

Hal J. Rasmussen Operating, Inc.
Six Desta Drive Suite 5850
Midland, Tx 79705

John Yuronka
807 Petroleum Bldg.
Midland, Tx 79701

Lanexco, Inc.
P.O. box 2730
Midland, Tx 79702

Meridian Oil, Inc.
21 Desta Drive
Midland, Tx 79702

James N. Evans
*Oil Reports & Gas Services, Inc.
P.O. Box 755
Hobbs, NM 88240

Chevron USA, Inc.
P.O. Box 670
Hobbs, NM 88240

Sol West III
*Oil Reports & Gas Services, Inc.
P.O. Box 763
Hobbs, NM 88240

Grace Petroleum Corp.
P.O. Drawer 2358
Midland, Tx 79702

xc: Bureau of Land Management
P.O. Box 1157
Hobbs, NM 88240

9-25-89

OIL CONSERVATION DIVISION
RECEIVED
'90 SEP 28 AM 9 23

SEP 26 1990

3162 (067)

DHC - 743

Charles W. Kemp
1701 E. Highland Dr.
Hobbs, NM 88240

RE: LC-030556-B
Stevens "B" 15 #3
SW $\frac{1}{4}$ of Sec. 15
T23S, R36E, NMPM

Gentlemen:

Your request to downhole commingle production from the Jalmat gas pool with production from the Langlie Mattix oil pool in the wellbore of your Stevens "B" 15 Well No. 3 on the above referenced lease is hereby approved.

As stated in your application, the interest owners of this lease are identical for both productive horizons. Allocation back to the contributing sources will be made based on well tests. Your request is made in the interest of conservation and will not result in reservoir damage or in reduced royalty.

This approval is subject to the concurrence of the New Mexico Oil Conservation Division.

Please contact Shannon Shaw or Adam Salameh at (505) 887-6544 or at the letterhead address if any further information is required.

Sincerely,

/s/ David Stout

FOR Richard L. Manus
Area Manager

cc:NM (065, B. Lopez)
NM (067, S. Shaw)
NM (067(A), K. Haston)
NMOCD - Santa Fe, D.R. Catanach



STATE OF NEW MEXICO
ENERGY AND MINERALS DEPARTMENT
OIL CONSERVATION DIVISION
HOBBS DISTRICT OFFICE

GARREY CARRUTHERS
GOVERNOR

9-27-89

POST OFFICE BOX 1980
HOBBS, NEW MEXICO 88241-1980
(505) 393-6161

OIL CONSERVATION DIVISION
P. O. BOX 2088
SANTA FE, NEW MEXICO 87501

RECEIVED

SEP 28 1989

OIL CONSERVATION DIV.
SANTA FE

RE: Proposed:

MC _____
DHC X _____
NSL _____
NSP _____
SWD _____
WFX _____
PMX _____

Gentlemen:

I have examined the application for the:

Charles W. Kemp Stevens B-15 #3-N 15-23-36
Operator Lease & Well No. Unit S-T-R

and my recommendations are as follows:

OK

Yours very truly,

Jerry Sexton
Supervisor, District 1

/ed