



SIETE OIL & GAS CORPORATION

*Petroleum Building Suite 200
P.O. Box 2523 Roswell, New Mexico 88202, USA
Telephone (505) 622-2202
FAX (505) 622-2297*

July 5, 1991

STATE OF NEW MEXICO
Oil Conservation Division
P.O. Box 2088
Santa Fe, NM 87504-2088

ATTN: Mike Stogner

RE: Commingling Formations
Osage Federal No. 9

Dear Mr. Stogner,

Siete Oil and Gas Corporation respectfully requests permission to commingle the Bone Spring and Wolfcamp intervals in the Osage Federal No. 9. Please find below the data requested by NMOCD Rule 303-C-2.

- a. Siete Oil and Gas Corporation
P.O. Box 2523
Roswell, New Mexico 88202-2523
- b. Osage Federal No. 9
990' FNL & 1980' FEL
Section 34: T19S, R29E
Eddy County, New Mexico
Commingle Parkway Wolfcamp and Parkway Bone Spring
- c. Please see attached plat. Siete Oil and Gas offsets this proration unit and wellbore in all directions except to the North which is operated by Petroleum Corporation. They have been notified of our intentions by certified letter.
- d. Please see attached C-116's.
- e. This well was completed in the Bone Spring on 9/9/89. The last monthly production for this well was 24 BOPD, 12 BWPD and 164 MCFGPD. We completed the Wolfcamp on 9/15/90 and is currently making 8 BOPD, 12 BWPD and 308 MCFGPD. Please refer to the attached wellbore diagram for the well history. Also attached are production curves for the Wolfcamp formation and the Bone Spring formation.

- f. Estimated bottomhole pressure for the Bone Spring is 3620 psi. Estimated bottomhole pressure for the Wolfcamp is 4092 psi.
- g. Please refer to the attached water analysis performed by Martin Water Laboratories, Inc. taken on the Bone Spring formation. The Wolfcamp does not presently produce any water, therefore there will be no problem with compatibility.
- h. Economics are attached showing the present value of the Wolfcamp by itself is \$38,100.00 and the Bone Spring is worth \$29,844.00. But if both zones are produced simultaneously the value of the production is \$88,026.00.
- i. Based on well tests the formula to allocate production will be:
Monthly Production * .75 = Bone Spring Production
Monthly Production * .25 = Wolfcamp Spring Production
- j. Siete Oil and Gas is the offset operator except to the North and they have been notified by certified letter along with the Bureau of Land Management.

The ownership in this well is common for all zones and this work will not jeopardize any future secondary potential or projects.

If you have any questions do not hesitate to call.

Sincerely,

SIETE OIL AND GAS CORPORATION

BY Robert Lee ^{CRS}
Robert Lee
Production Engineer

cc:file

Enclosure

RESERVES AND ECONOMICS

AS OF JULY 1, 1991

-END- MO-YR	---GROSS PRODUCTION---		----NET PRODUCTION----		--PRICES--		-----OPERATIONS, M\$-----			CAPITAL COSTS, M\$	CASH FLOW BTAX, M\$	10.00 PCT CLM. DISC BTAX, M\$
	OIL, MBL	GAS, MMCF	OIL, MBL	GAS, MMCF	OIL \$/B	GAS \$/M	NET OPER REVENUES	SEV+ADV+ WF TAXES	NET OPER EXPENSES			
12-91	1.578	50.488	.405	12.956	21.50	1.75	31.381	2.397	.000	.000	28.984	28.304
12-92	1.337	42.800	.343	10.984	22.57	1.84	27.926	2.134	.000	.000	25.792	51.760
12-93	5.509	36.413	1.414	9.344	23.70	1.93	51.545	3.689	10.435	.000	37.421	82.698
12-94	2.116	11.294	.543	2.898	24.89	2.03	19.386	1.375	10.957	.000	7.054	88.026
12-95												
12-96												
12-97												
12-98												
12-99												
12-0												
12-1												
12-2												
12-3												
12-4												
12-5												
S TOT	10.540	140.995	2.705	36.182	23.47	1.84	130.238	9.595	21.392	.000	99.251	88.026
REM.	.000	.000	.000	.000	.00	.00	.000	.000	.000	.000	.000	88.026
TOTAL	10.540	140.995	2.705	36.182	23.47	1.84	130.238	9.595	21.392	.000	99.251	88.026
CLM.	.000	.000		NET OIL REVENUES (M\$)			63.483	-----PRESENT WORTH PROFILE-----				
ULT.	10.540	140.995		NET GAS REVENUES (M\$)			66.755	DISC RATE	PW OF NET BTAX, M\$	DISC RATE	PW OF NET BTAX, M\$	
				TOTAL REVENUES (M\$)			130.238					
BTAX RATE OF RETURN (PCT)		100.00	PROJECT LIFE (YEARS)			3.500	.0	99.251	30.0	72.530		
BTAX PAYOUT YEARS		.00	DISCOUNT RATE (PCT)			10.000	2.0	96.751	35.0	69.623		
BTAX PAYOUT YEARS (DISC)		.00	GROSS OIL WELLS			2.000	5.0	93.253	40.0	66.998		
BTAX NET INCOME/INVEST		.00	GROSS GAS WELLS			.000	8.0	90.034	45.0	64.614		
BTAX NET INCOME/INVEST (DISC)		.00	GROSS WELLS			2.000	10.0	88.026	50.0	62.443		
							12.0	86.120	60.0	58.632		
							15.0	83.434	70.0	55.401		
							18.0	80.941	80.0	52.630		
							20.0	79.374	90.0	50.228		
							25.0	75.762	100.0	48.127		

OSAGE #9 CO-MINGLING

DATE: 07/05/91
 TIME: 10:20.01
 FILE: OSUAL
 GET#: 0

RESERVES AND ECONOMICS

AS OF JULY 1, 1991

LEASE	---GROSS PRODUCTION---		----NET PRODUCTION----		-----OPERATIONS, M\$-----			CAPITAL COSTS, M\$	CASH FLOW BTAX, M\$	10.00 PCT CUM. DISC BTAX, M\$
	OIL, MBL	GAS, MMCF	OIL, MBL	GAS, MMCF	NET OPER REVENUES	SEV+ADV+ WF TAXES	NET OPER EXPENSES			
***** FILE: OSUAL										
(2)OSAGE #9	3.389	107.992	.870	27.713	69.546	5.313	.000	.000	64.233	59.504
(4)OSAGE #9	7.151	33.003	1.835	8.469	60.692	4.282	21.392	.000	35.018	28.522
(0)SUMMARY: OSAGE #9 CO-MINGLING	10.540	140.995	2.705	36.182	130.238	9.595	21.392	.000	99.251	88.026

FILE NAME: 09DUAL (2)

DATA REPORT

DATE: 07/05/91

TIME: 10:03.23

CASE NAME: 09WOLF

101 OSAGE #9
102 WOLFCAMP
103 CO-MINGLING

117 CASE \$COM1

	W.I. FRACTION	OP. COST (\$/W/MO)	OP. COST (\$/MO.)	ADV. TAX (PCT)	MAJOR PH. NAME	PROD DATE (MO/DY/YR)		
210	.31550000	.00	2500.00	.000	OIL	7/ 1/91		
	PHASE NAME	CUM PROD (MUNITS)	REV. INT FRACTION	PRICE (\$/UNIT)	SEV. TAX (PCT)	NO. OF WELLS	RATIO TO MAJOR PH	
221	OIL	.000	.25662500	21.500	6.700	1.0		
222	GAS	.000	.25662500	1.750	8.000	.0		

	PH. NAME	CURVE TP	DECLINE%	QI RATE	QT RATE	CUM. LIMIT	(M OR Y)	CALC VALLE
410	OIL	EXP	70.000	350.000	10.000	X X	M	
CALC	OIL	EXP	END= 70.000	350.000	10.000	2.953 YRS	M	3.389 MEBL
411	GAS	EXP	70.000	11200.000	EL	X X	M	
CALC	GAS	EXP	END= 70.000	11200.000	365.000	2.844 YRS	M	107.992 MMCF

630 CASE \$ESC1

600 SERIES LINES:

- * 630 DATA OILP : ESC 5 % TO LIFE
- * 631 DATA GASP : ESC 5 % TO LIFE
- * 632 DATA OPOST : ESC 5 % TO LIFE

ECONOMIC LIFE (YRS): 1.500
 GROSS OIL (MBBL): 2.915
 GROSS GAS (MMCF): 93.288

OSAGE #9
 WOLFCAMP
 CO-MINGLING

DATE: 07/05/91
 TIME: 10:03.23
 FILE: 09DUAL
 GET#: 2

RESERVES AND ECONOMICS

AS OF JULY 1, 1991

-END- MO-YR	---GROSS PRODUCTION---			---NET PRODUCTION---			--PRICES---		-----OPERATIONS, M\$-----			10.00 PCT	
	OIL, MBBL	GAS, MMCF	MMCF	OIL, MBBL	GAS, MMCF	MMCF	OIL \$/B	GAS \$/M	NET OPER REVENUES	SEV+ADV+ WF TAXES	NET OPER EXPENSES	CAPITAL COSTS, M\$	CASH FLOW BTAX, M\$
12-91	1.578	50.488	.405	12.956	21.50	1.75	31.381	2.397	4.733	.000	24.251	23.682	
12-92	1.337	42.800	.343	10.984	22.58	1.84	27.926	2.134	9.938	.000	15.854	38.100	
12-93													
12-94													
12-95													
12-96													
12-97													
12-98													
12-99													
12- 0													
12- 1													
12- 2													
12- 3													
12- 4													
12- 5													
S TOT	2.915	93.288	.748	23.940	21.99	1.79	59.307	4.531	14.671	.000	40.105	38.100	
REM.	.000	.000	.000	.000	.00	.00	.000	.000	.000	.000	.000	38.100	
TOTAL	2.915	93.288	.748	23.940	21.99	1.79	59.307	4.531	14.671	.000	40.105	38.100	
CUM.	.000	.000		NET OIL REVENUES (M\$)				16.451	-----PRESENT WORTH PROFILE-----				
ULT.	2.915	93.288		NET GAS REVENUES (M\$)				42.856	DISC	PW OF NET	DISC	PW OF NET	
				TOTAL REVENUES (M\$)				59.307	RATE	BTAX, M\$	RATE	BTAX, M\$	
BTAX RATE OF RETURN (PCT)			100.00	PROJECT LIFE (YEARS)				1.500	.0	40.105	30.0	34.958	
BTAX PAYOUT YEARS			.00	DISCOUNT RATE (PCT)				10.000	2.0	39.674	35.0	34.307	
BTAX PAYOUT YEARS (DISC)			.00	GROSS OIL WELLS				1.000	5.0	39.059	40.0	33.699	
BTAX NET INCOME/INVEST			.00	GROSS GAS WELLS				.000	8.0	38.473	45.0	33.129	
BTAX NET INCOME/INVEST (DISC)			.00	GROSS WELLS				1.000	10.0	38.100	50.0	32.593	
								12.0	37.740	60.0	31.612		
INITIAL W.I. FRACTION			.315500	INITIAL NET OIL FRACTION				.256625	15.0	37.220	70.0	30.737	
FINAL W.I. FRACTION			.315500	FINAL NET OIL FRACTION				.256625	18.0	36.726	80.0	29.947	
PRODUCTION START DATE			7- 1-91	INITIAL NET GAS FRACTION				.256625	20.0	36.408	90.0	29.233	
MONTHS IN FIRST LINE			6.00	FINAL NET GAS FRACTION				.256625	25.0	35.657	100.0	28.582	

FILE NAME: 09DUAL (4)

DATA REPORT

DATE: 07/05/91

TIME: 10:16.45

CASE NAME: 09BONE

101 OSAGE #9
102 BONE SPRING
103 CO-MINGLING

117 CASE \$COM1

	W.I. FRACTION	OP. COST (\$/W/MO)	OP. COST (\$/MO.)	ADV. TAX (PCT)	MAJOR PH. NAME	PROD DATE (MO/DY/YR)		
210	.31550000	.00	2500.00	.000	OIL	1/ 1/93		
	PHASE NAME	CUM PROD (MUNITS)	REV. INT FRACTION	PRICE (\$/UNIT)	SEV. TAX (PCT)	NO. OF WELLS	RATIO TO MAJOR PH	
221	OIL	.000	.25662500	21.500	6.700	1.0		
222	GAS	.000	.25662500	1.750	8.000	.0		

	PH. NAME	CURVE TP	DECLINE%	QI RATE	QT RATE	CUM. LIMIT	(M OR Y)	CALC VALUE
410	OIL	EXP	60.000	650.000	10.000	X X	M	
CALC	OIL	EXP	END= 60.000	650.000	10.000	4.556 YRS	M	8.382 MBL
411	GAS	EXP	60.000	3000.000	EL	X X	M	
CALC	GAS	EXP	END= 60.000	3000.000	365.000	2.299 YRS	M	34.509 MMCF

630 CASE \$ESC1

600 SERIES LINES:

- * 630 DATA OILP : ESC 5 % TO LIFE
- * 631 DATA GASP : ESC 5 % TO LIFE
- * 632 DATA OPOCOST : ESC 5 % TO LIFE

ECONOMIC LIFE (YRS): 2.000
 GROSS OIL (MBBL): 7.151
 GROSS GAS (MMCF): 33.003

OSAGE #9
BONE SPRING
CO-MINGLING

DATE: 07/05/91
TIME: 10:16.45
FILE: 09DUAL
GET#: 4

RESERVES AND ECONOMICS

AS OF JANUARY 1, 1993

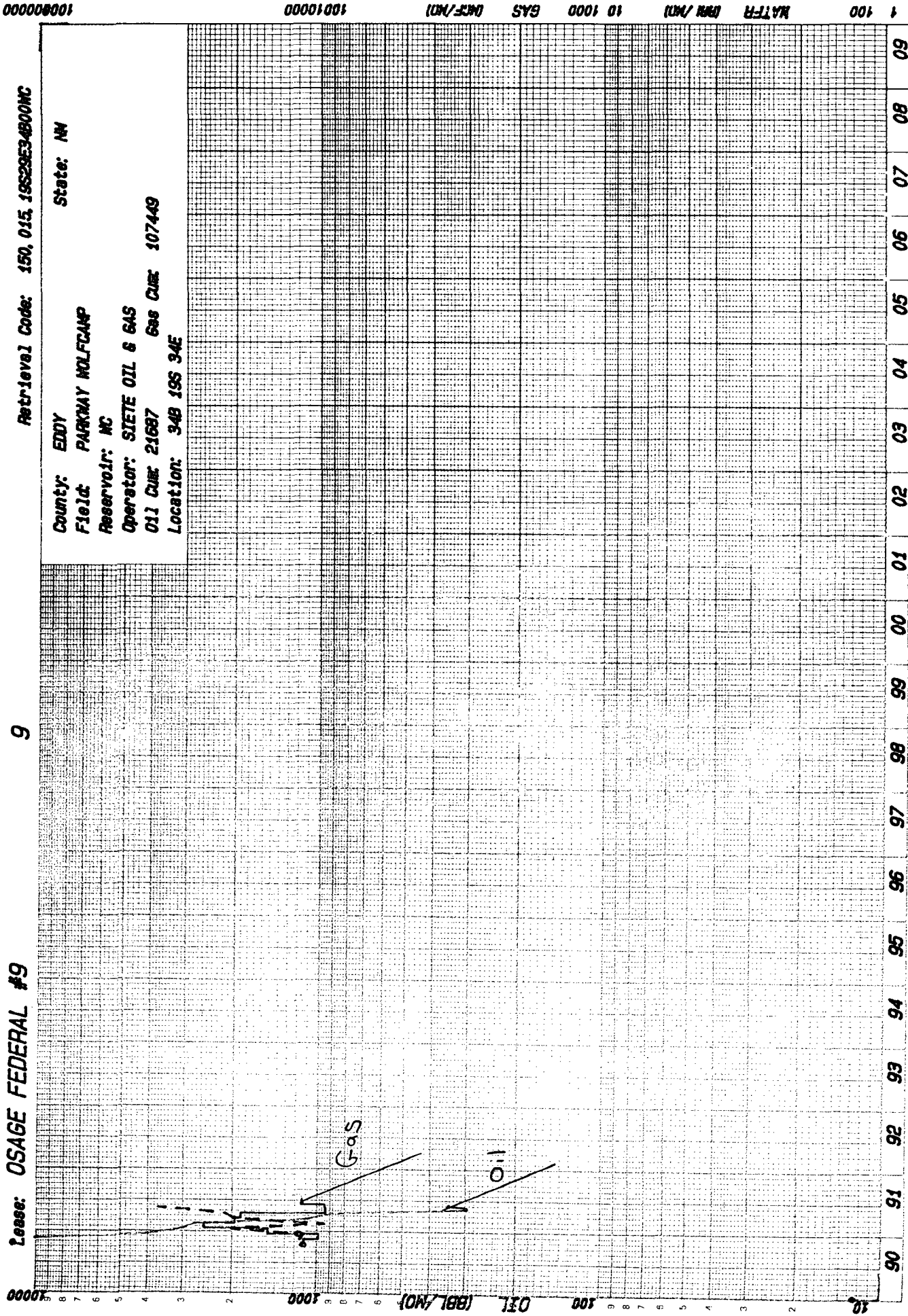
-END- MO-YR	---GROSS PRODUCTION---			----NET PRODUCTION----			--PRICES--		-----OPERATIONS, M\$-----			10.00 PCT		
	OIL, MBL	GAS, MMCF	MMCF	OIL, MBL	GAS, MMCF	MMCF	OIL \$/B	GAS \$/M	NET OPER REVENUES	SEV+ADV+ WF TAXES	NET OPER EXPENSES	CAPITAL COSTS, M\$	CASH FLOW BTAX, M\$	CUM. DISC BTAX, M\$
12-93	5.108	23.573		1.311	6.049	21.50	1.75		38.773	2.736	9.465	.000	26.572	25.345
12-94	2.043	9.430		.524	2.420	22.58	1.84		16.276	1.149	9.938	.000	5.189	29.844
12-95														
12-96														
12-97														
12-98														
12-99														
12- 0														
12- 1														
12- 2														
12- 3														
12- 4														
12- 5														
12- 6														
12- 7														
S TOT	7.151	33.003		1.835	8.469	21.81	1.78		55.049	3.885	19.403	.000	31.761	29.844
REM.	.000	.000		.000	.000	.00	.00		.000	.000	.000	.000	.000	29.844
TOTAL	7.151	33.003		1.835	8.469	21.81	1.78		55.049	3.885	19.403	.000	31.761	29.844
CUM.	.000	.000												
ULT.	7.151	33.003												
					NET OIL REVENUES (M\$)				40.016	-----PRESENT WORTH PROFILE-----				
					NET GAS REVENUES (M\$)				15.033	DISC RATE	PW OF NET BTAX, M\$	DISC RATE	PW OF NET BTAX, M\$	
					TOTAL REVENUES (M\$)				55.049					
BTAX RATE OF RETURN (PCT)		100.00	PROJECT LIFE (YEARS)		2.000	.0	31.761	30.0	26.883					
BTAX PAYOUT YEARS		.00	DISCOUNT RATE (PCT)		10.000	2.0	31.348	35.0	26.276					
BTAX PAYOUT YEARS (DISC)		.00	GROSS OIL WELLS		1.000	5.0	30.757	40.0	25.711					
BTAX NET INCOME/INVEST		.00	GROSS GAS WELLS		.000	8.0	30.199	45.0	25.183					
BTAX NET INCOME/INVEST (DISC)		.00	GROSS WELLS		1.000	10.0	29.844	50.0	24.689					
						12.0	29.502	60.0	23.789					
INITIAL W.I. FRACTION		.315500	INITIAL NET OIL FRACTION		.256625	15.0	29.010	70.0	22.989					
FINAL W.I. FRACTION		.315500	FINAL NET OIL FRACTION		.256625	18.0	28.542	80.0	22.272					
PRODUCTION START DATE		1- 1-93	INITIAL NET GAS FRACTION		.256625	20.0	28.243	90.0	21.626					
MONTHS IN FIRST LINE		12.00	FINAL NET GAS FRACTION		.256625	25.0	27.537	100.0	21.040					

Lease: OSAGE FEDERAL #9

9

Retrieval Code: 150, 015, 19S29E34800NC

County: EDDY State: NV
 Field: PARKWAY WOLF CAMP
 Reservoir: MC
 Operator: SIETE OIL & GAS
 Oil Curc 21687 Gas Curc 107449
 Location: 348 19S 34E



F.P. Date 10-90

Oil = Solid

Gas = Step

Water = Dashed

SL 2033

Date: 05-29-91

100000000

10010000

GAS (MCF/MO)

10 1000

WATER (BBL/MO)

1 100

90 91 92 93 94 95 96 97 98 99 00 01 02 03 04 05 06 07 08 09

Operator (#665955)	Lease name	Well #
SIETE OIL & GAS	OSAGE FEDERAL #9	9

Ident. #	State	Dist	County	Location	Lse/tax /unit #
19S29E34B00WC	NM(30)	002	015 EDDY	34B 19S 34E	38540

API #	Field (#0)	Reservoir
30-015-00261	PARKWAY WOLFCAMP	WC

Total Depth	Perforations Upper Lower	Temp Gradient	N-Factor	GOR
0	0 0	0.000	0.000	0

Comp Date	Production Dates First Last	Status Date	Status
0	9010 9104	0	ACT

Cumulative gas MCF	Since FP Date	Gas Gravity	Gas Gatherer
107449	FP Date	0.00	PHIPC

Cumulative liquid BBL	Since FP Date	Liquid Gravity	Liquid Gatherer
21687	FP Date	0.00	CONCO

Dwight's Energydata, Inc. DLOOK 4.20
Production data from file: company.ind
Lease: OSAGE FEDERAL #9

Record # 2

Run date: 05/24/91

Retrieval code: 150,015,19S29E34

Well #: 9

Month	Oil bbls	Cum Oil bbls	Gas mcf	Cum Gas mcf	Water bbls	No. of Wells
January	0	0	0	0	0	1
February	0	0	0	0	0	1
March	0	0	0	0	0	1
April	0	0	0	0	0	1
May	0	0	0	0	0	1
June	0	0	0	0	0	1
July	0	0	0	0	0	1
August	0	0	0	0	0	1
September	0	0	0	0	0	1
October	9865	9865	11003	11003	114	1
November	3953	13818	9788	20791	110	1
December	2943	16761	14750	35541	199	1
Total 1990	16761	16761	35541	35541	423	1
January	2694	19455	24892	60433	93	1
February	1072	20527	19368	79801	195	1
March	868	21395	18407	98208	210	1
April	292	21687	9241	107449	363	1
Total 1991	4926	21687	71908	107449	861	1

1000000000

100010000

(MCF/MO)

GAS

100 1000

(MM/MO)

MATFR

10 100

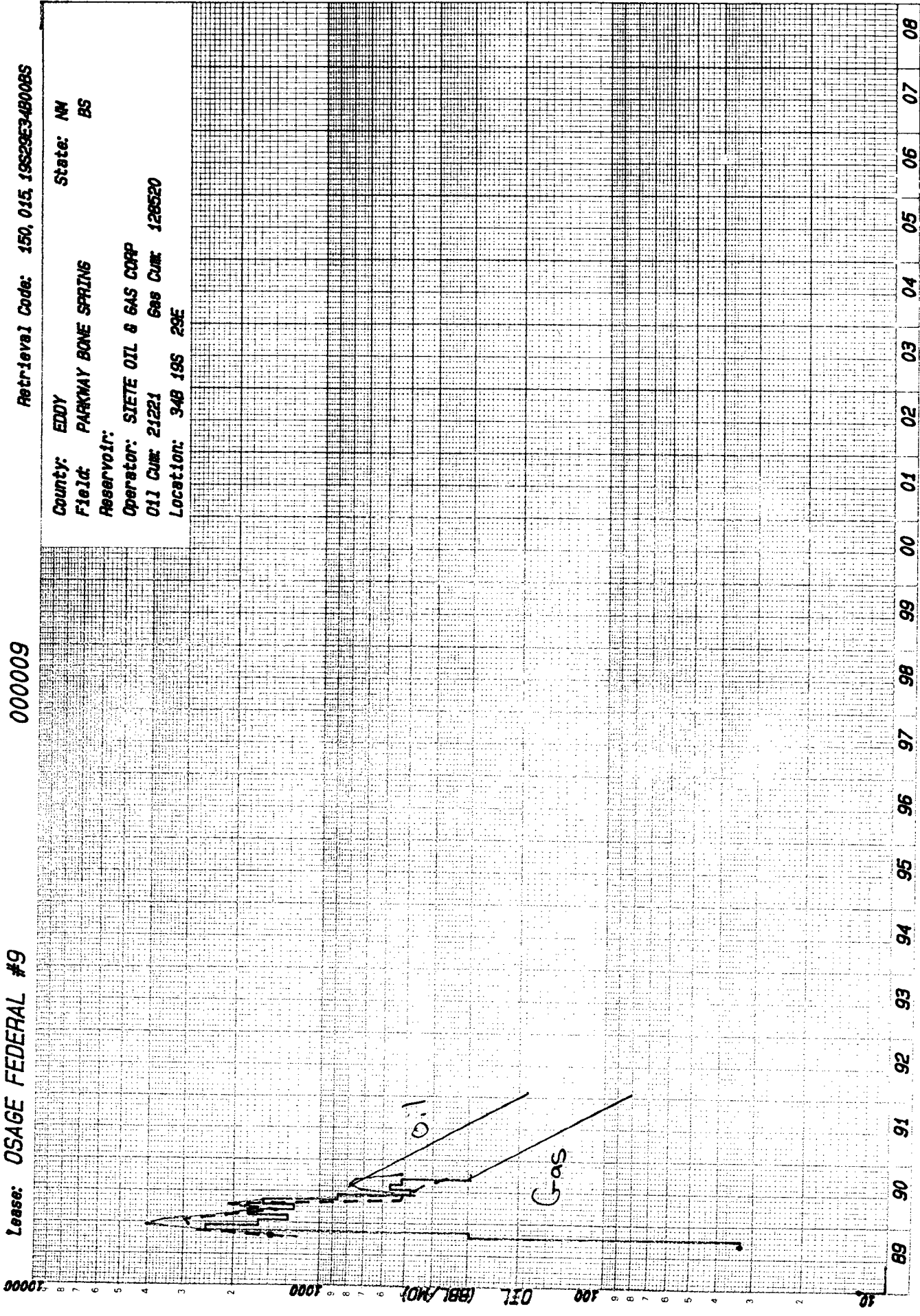
Lease: OSAGE FEDERAL #9

000009

Retrieval Code: 150, 015, 19S29E348008S

County: EDDY State: NM
Field: PARKWAY BONE SPRING BS

Reservoir:
Operator: SIETE OIL & GAS CORP
Oil Cum: 21221 Gas Cum: 126520
Location: 348 19S 29E



F.P. Date 09-89

Oil = Solid

Gas = Step

Water = Dashed

SL 20.3.3

Date: 05-29-91

Dwight's Energydata, Inc. DLOOK 4.20
 Property data from file: siete.ind

Record # 73

Run date: 04/29/91

Retrieval code: 150,015,19S29E34

Operator (#665955)	Lease name	Well #
SIETE OIL & GAS CORP	OSAGE FEDERAL #9	000009

Ident. #	State	Dist	County	Location	Lse/tax /unit #
19S29E34B00BS	NM(30)	002	015 EDDY	34B 19S 29E	38540

API #	Field (#8056180)	Reservoir
30-015-26157	PARKWAY BONE SPRING	BS

Total Depth	Perforations Upper Lower	Temp Gradient	N-Factor	GOR
0	0 0	0.000	0.000	0

Comp Date	Production Dates First Last	Status Date	Status
0	8909 9009	0	INA

Cumulative gas MCF	Since FP Date	Gas Gravity	Gas Gatherer
128520		0.00	

Cumulative liquid BBL	Since FP Date	Liquid Gravity	Liquid Gatherer
21221		0.00	CONTL

Dwight's Energydata, Inc. DLOOK 4.20
 Production data from file: siete.ind
 Lease: OSAGE FEDERAL #9

Record # 73

Run date: 04/29/91

Retrieval code: 150,015,19S29E34

Well #: 000009

Month	Oil bbls	Cum Oil bbls	Gas mcf	Cum Gas mcf	Water bbls	No. of Wells
January	0	0	0	0	0	1
February	0	0	0	0	0	1
March	0	0	0	0	0	1
April	0	0	0	0	0	1
May	0	0	0	0	0	1
June	0	0	0	0	0	1
July	0	0	0	0	0	1
August	0	0	0	0	0	1
September	1170	1170	329	329	1320	1
October	2127	3297	2939	3268	2700	1
November	3971	7268	24549	27817	2801	1
December	3437	10705	16101	43918	2911	1
Total 1989	10705	10705	43918	43918	9732	1
January	2187	12892	12710	56628	2052	1
February	1663	14555	17478	74106	1372	1
March	1980	16535	12114	86220	2040	1
April	1524	18059	15505	101725	511	1
May	453	18512	8513	110238	498	1
June	700	19212	4728	114966	449	1
July	772	19984	5579	120545	420	1
August	731	20715	5075	125620	360	1
September	506	21221	2900	128520	332	1
Total 1990	10516	21221	84602	128520	8034	1

RESULT OF WATER ANALYSES

TO: Mr. Robert Lee LABORATORY NO. 39164
P. O. Box 2523, Roswell, NM 88202 SAMPLE RECEIVED 3-11-91
RESULTS REPORTED 3-13-91

COMPANY Siete Oil & Gas Corporation LEASE Osage
FIELD OR POOL _____ PARKWAY _____
SECTION _____ BLOCK _____ SURVEY _____ COUNTY Eddy STATE NM

SOURCE OF SAMPLE AND DATE TAKEN:

- NO. 1 Produced water - taken from Osage #1. 2-18-91
- NO. 2 Produced water - taken from Osage #18. ^{Battery} 2-18-91
- NO. 3 _____
- NO. 4 _____

RECEIVED
MAR 15 1991

REMARKS: 1. Delaware 2. Bone Springs

CHEMICAL AND PHYSICAL PROPERTIES				
	NO. 1	NO. 2	NO. 3	NO. 4
Specific Gravity at 60° F.	1.1537	1.1418		
pH When Sampled				
pH When Received	5.63	6.46		
Bicarbonate as HCO ₃	94	405		
Supersaturation as CaCO ₃	12	30		
Undersaturation as CaCO ₃	--	--		
Total Hardness as CaCO ₃	58,500	12,100		
Calcium as Ca	19,200	3,680		
Magnesium as Mg	2,551	705		
Sodium and/or Potassium	69,208	81,113		
Sulfate as SO ₄	568	811		
Chloride as Cl	147,720	132,806		
Iron as Fe	12.4	48.8		
Barium as Ba				
Turbidity, Electric				
Color as Pt				
Total Solids, Calculated	239,341	219,519		
Temperature °F.				
Carbon Dioxide, Calculated	385	267		
Dissolved Oxygen.				
Hydrogen Sulfide	0.0	0.0		
Resistivity, ohms/m at 77° F.	0.052	0.054		
Suspended Oil				
Filtrable Solids as mg/l				
Volume Filtered, ml				

Results Reported As Milligrams Per Liter

Additional Determinations And Remarks The objective herein is to evaluate compatibility between these two waters. In studying the waters, the evidence clearly indicates no potential precipitation or scaling development as a result of mixing these waters. Therefore, based on the results herein, we would classify these waters as compatible.

By Waylan C. Martin

Waylan C. Martin, M.A.

SIETE OIL & GAS CORPORATION

WELL: Osage Federal No. 9
 FIELD: Parkway Wolfcamp
 INTERVAL: Wolfcamp
 Comp: 9/15/90
 API #: 30-015-26157
 Spudded 26" hole on 8/3/89

LOCATION:
 990' FNL & 1980' FEL
 Section 34: T19S, R29E
 Eddy County, New Mexico
 GOR: 1584/1
 IP: 459 BOPD, 727 MCFGPD, 5 BWPD

ELEVATION: 3319' GR
 ZERO: 8' AGL

TOPS

- 1. Bone Spring 5580'
- 2. Wolfcamp 9232'

```

||||| |||||
<||||| |||||> SURFACE CASING - RU & ran 10 jts (346') 20" 94# J-55 casing, set
||||| ||||| @ 343' w/165 sxs 35/65 POZ, 1/4# D-29, 10# D-44
||||| ||||| & 3% CaCl + 200 sxs 35/65 POZ w/1/4# D-29 & 3%
||||| ||||| CaCl, tail-in w/250 sxs CC w/1/4# D-29 & 2% CaCl,
||||| ||||| did not circ, cmt @ 90' w/1" w/200 sxs CC w/3%
||||| ||||| CaCl, circ cmt to surface
||||| |||||
||||| |||||
<||||| |||||> INTERMEDIATE CASING - ran 28 jts (1173.23') 13 3/8" 61#
||||| ||||| J-55 casing, set @ 1141' w/750 sxs 35/65 POZ w/1/4# D-29
||||| ||||| 5% CaCl & 10# D-44, tail-in w/250 sxs CC
||||| ||||| w/1/4# D-29 & 2% CaCl, circ 118 sxs, pump 75 sxs pill @ 1141'
||||| |||||
||||| |||||
<||||| |||||> 2nd INTERMEDIATE CASING - ran 76 jts (3207') 24# 8 5/8" casing set @ 3200'.
||||| ||||| w/800 sxs 35/65 POZC w/1/4# D-29 & 1.5% CaCl, tail-in w/250
||||| ||||| sxs CC w/2% CaCl & 1/4# D-29, did not circ, began 1" operations,
||||| ||||| 1st stage set @ 1444' w/100 sxs CC, 3% CaCl; 2nd stage set @ 1444'
||||| ||||| w/100 sxs CC, 3% CaCl; 3rd stage set @ 1789' w/100 sxs CC, 3% CaCl,
||||| ||||| 4th stage set @ 1640' w/83 sxs CC, 3% CaCl & 2% PHD gel,
||||| ||||| 5th stage set @ 1640' w/83 sxs CC, 3% CaCl & 2% PHD gel,
||||| ||||| 6th stage set @ 1154' w/65 sxs, 3% CaCl, tagged @ 1010
||||| |||||
||||| ||||| PAST COMPLETION INTERVAL
||||| |||||
||||| ||||| 2nd Bone Spring Sand
||||| |||||
||||| ||||| <--Perfed interval 7790'-8002' (33 shots) acidized w/2750 gals
||||| ||||| 15% HCl, divert w/66 ballsealers (balled out), FPIP-1450,
||||| ||||| ISIP-1150, fraced w/72000 gals 30# XL, 179,680# 16/30 Ottawa
||||| ||||| <--& 31,760# 16/30 RCS, FPIP-1950, ISIP-1460, ran purp-in tracer
||||| |||||
||||| ||||| XXXX
||||| ||||| PRESENT COMPLETION INTERVAL
||||| |||||
||||| ||||| Wolfcamp
||||| |||||
||||| ||||| <--Perfed 9256'-9281' (26 shots)
||||| ||||| <--Swabbed well, no acid or frac job
||||| |||||
<||||| |||||> PRODUCTION CASING - ran 228 jts (9426') 17# N-80/L-80, J-55 & K-55 5 1/2"
||||| ||||| casing set @ 9400' w/700 sxs CC, circ 57 sxs to pits off DV Tool,
||||| ||||| DV Tool @ 6491', cmt'd w/400 sxs 35/65 POZ, 10# D-44, 1/4# D-29
||||| ||||| tail-in w/385 sxs 35/65 POZ, 10# D-44 & 1/4# D-29
    
```

TBG @ 9137'
 SN @ 9136'
 PKR @ 9137'

DRAWN BY: CATHY
 DATE: NOVEMBER 6, 1990

ID: 9400'
 PBD: 9338'

Submit 2 copies to Appropriate District Office.
 DISTRICT I
 P.O. Box 1980, Hobbs, NM 88240
 DISTRICT II
 P.O. Drawer DD, Artesia, NM 88210
 DISTRICT III
 1000 Rio Brazos Rd., Aztec, NM 87410

State of New Mexico
 Energy, Minerals and Natural Resources Department
OIL CONSERVATION DIVISION
 P.O. Box 2088
 Santa Fe, New Mexico 87504-2088

Form C-116
 Revised 1/1/89

GAS - OIL RATIO TEST

Operator Siete Oil and Gas Corporation		Pool Wildcat Bone Spring		County Eddy										
Address P.O. Box 2523		Roswell, NM 88202-2523		TYPE OF TEST - (X) <input type="checkbox"/> Scheduled <input checked="" type="checkbox"/> Completion <input checked="" type="checkbox"/> Special <input type="checkbox"/>										
LEASE NAME	WELL NO.	LOCATION			DATE OF TEST	CHOKE SIZE	TBG. PRESS.	DAILY ALLOW. ABLE	LENGTH OF TEST HOURS	PROD. DURING TEST			GAS - OIL RATIO CU.FT/BBL.	
		U	S	T						R	WATER BBL.S.	GRAV. OIL		OIL BBL.S.
Osage Federal	9	34	19S	29E	10/19/89	F 32/64"	530	187	24	532	43.2	434	1731	3988/1

Instructions:
 During gas-oil ratio test, each well shall be produced at a rate not exceeding the top unit allowable for the pool in which well is located by more than 25 percent. Operator is encouraged to take advantage of this 25 percent tolerance in order that well can be assigned increased allowables when authorized by the Division.
 Gas volumes must be reported in MCF measured at a pressure base of 15.025 psia and a temperature of 60° F. Specific gravity base will be 0.60.
 Report casing pressure in lieu of tubing pressure for any well producing through casing.
 (See Rule 301, Rule 1116 & appropriate pool rules.)

I hereby certify that the above information is true and complete to the best of my knowledge and belief.
 Signature Cathy Batley
 Printed name and title Cathy Batley, Drilling & Production Tech.
 Date November 16, 1989 (505)622-2202
 Telephone No. _____

Submit 2 copies to Appropriate District Office.
 DISTRICT I
 P.O. Box 1980, Hobbs, NM 88240
 DISTRICT II
 P.O. Drawer DD, Artesia, NM 88210
 DISTRICT III
 1000 Rio Brazos Rd., Aztec, NM 87410

State of New Mexico
 Energy, Minerals and Natural Resources Department
OIL CONSERVATION DIVISION
 P.O. Box 2088
 Santa Fe, New Mexico 87504-2088

Form C-116
 Revised 1/1/89

GAS - OIL RATIO TEST

Operator State Oil & Gas Corporation		Pool Parkway Wolfcamp		County Eddy												
Address P.O. Box 2523, Roswell, NM 88202-2523		TYPE OF TEST - (X) <input type="checkbox"/> Scheduled <input checked="" type="checkbox"/> Completion		Special <input type="checkbox"/>												
LEASE NAME	WELL NO.	LOCATION			DATE OF TEST	CHOKE SIZE	TBG. PRESS.	DAILY ALLOWABLE	LENGTH OF TEST HOURS	PROD. DURING TEST			GAS - OIL RATIO CU.FT/BBL			
		U	S	T						R	WATER BBL.	GRAV. OIL		OIL BBL.	GAS M.C.F.	
Osage Federal	9	B	34	19S	29E	10/5/90	F	660	15/64"	275	24	4	44.0	299	354	1184/1

Instructions:

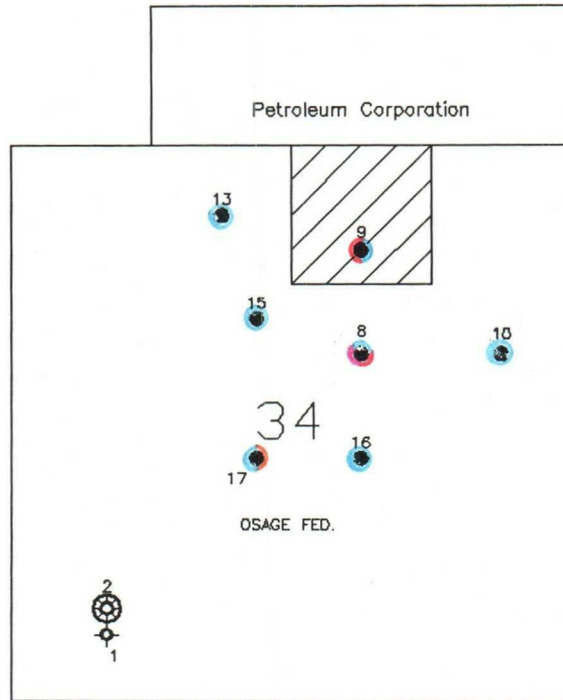
During gas-oil ratio test, each well shall be produced at a rate not exceeding the top unit allowable for the pool in which well is located by more than 25 percent. Operator is encouraged to take advantage of this 25 percent tolerance in order that well can be assigned increased allowables when authorized by the Division.
 Gas volumes must be reported in MCF measured at a pressure base of 15.025 psia and a temperature of 60° F. Specific gravity base will be 0.60.
 Report casing pressure in lieu of tubing pressure for any well producing through casing.

I hereby certify that the above information is true and complete to the best of my knowledge and belief.

Cathy Batley-Seeley
 Signature
 Cathy Batley-Seeley, Drilling Technician
 Printed name and title
 7/17/91
 Date
 (505)622-2202
 Telephone No.

(See Rule 301, Rule 1116 & appropriate pool rules.)

Township 19 South, Range 29 East



SIETE OIL & GAS CORPORATION

EDDY COUNTY, NEW MEXICO

PARKWAY DELAWARE – BONE SPRING

- *YATES PRODUCTION*
- *DELAWARE PRODUCTION*
- *BONE SPRING PRODUCTION*

- *WOLFCAMP PRODUCTION*
- *STRAWN PRODUCTION*
- *ATOKA PRODUCTION*