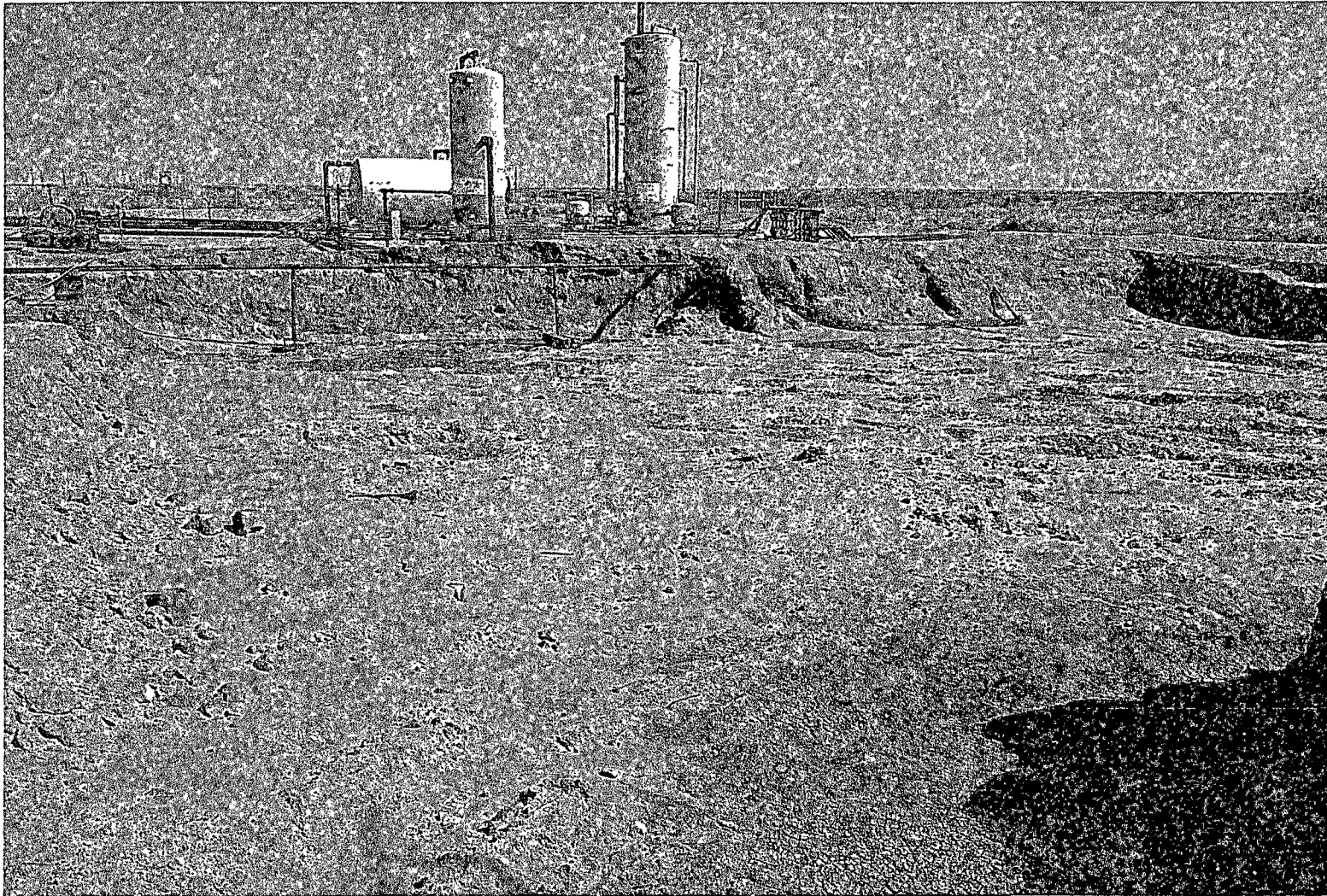
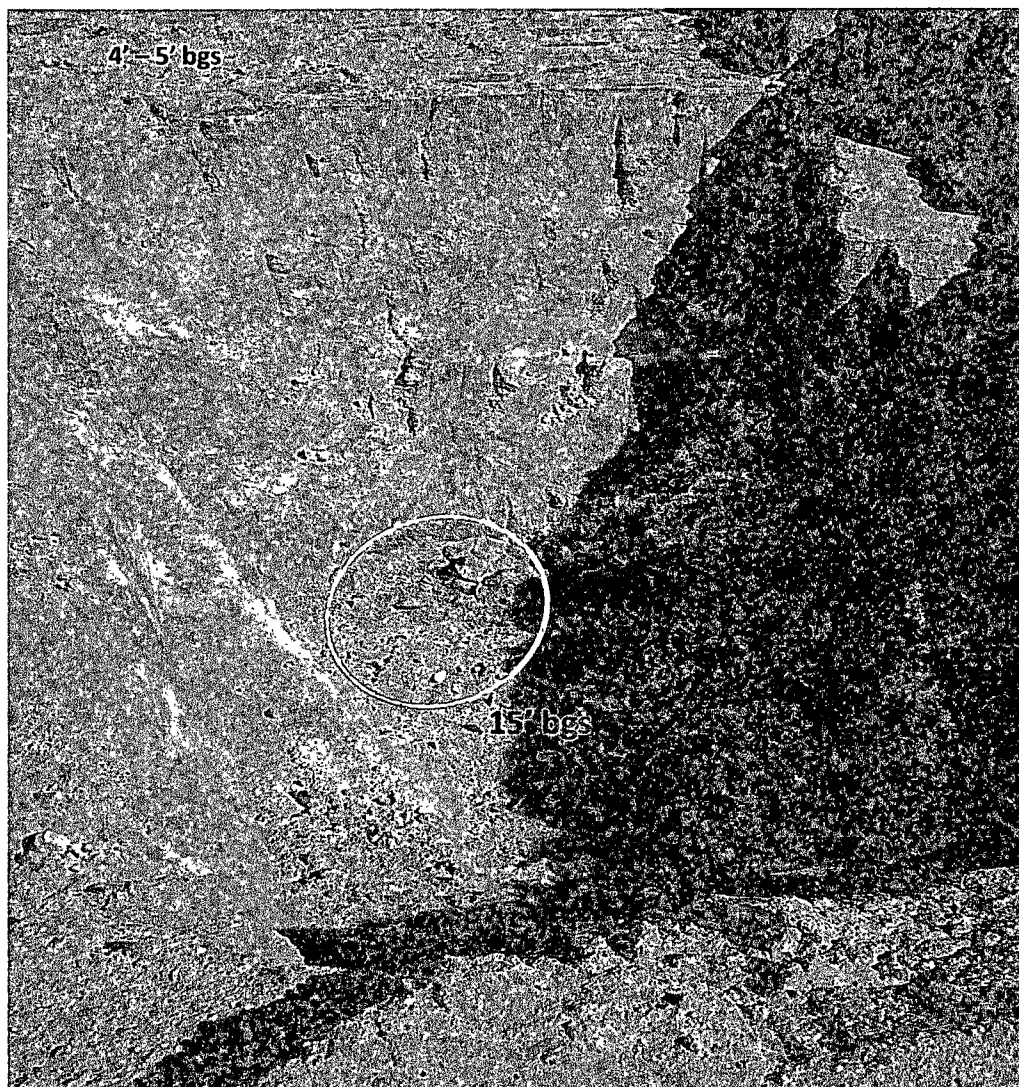




View to the north of impacted soil in the containment berm at the Sundance Federal A Tank Battery (8/20/2012)

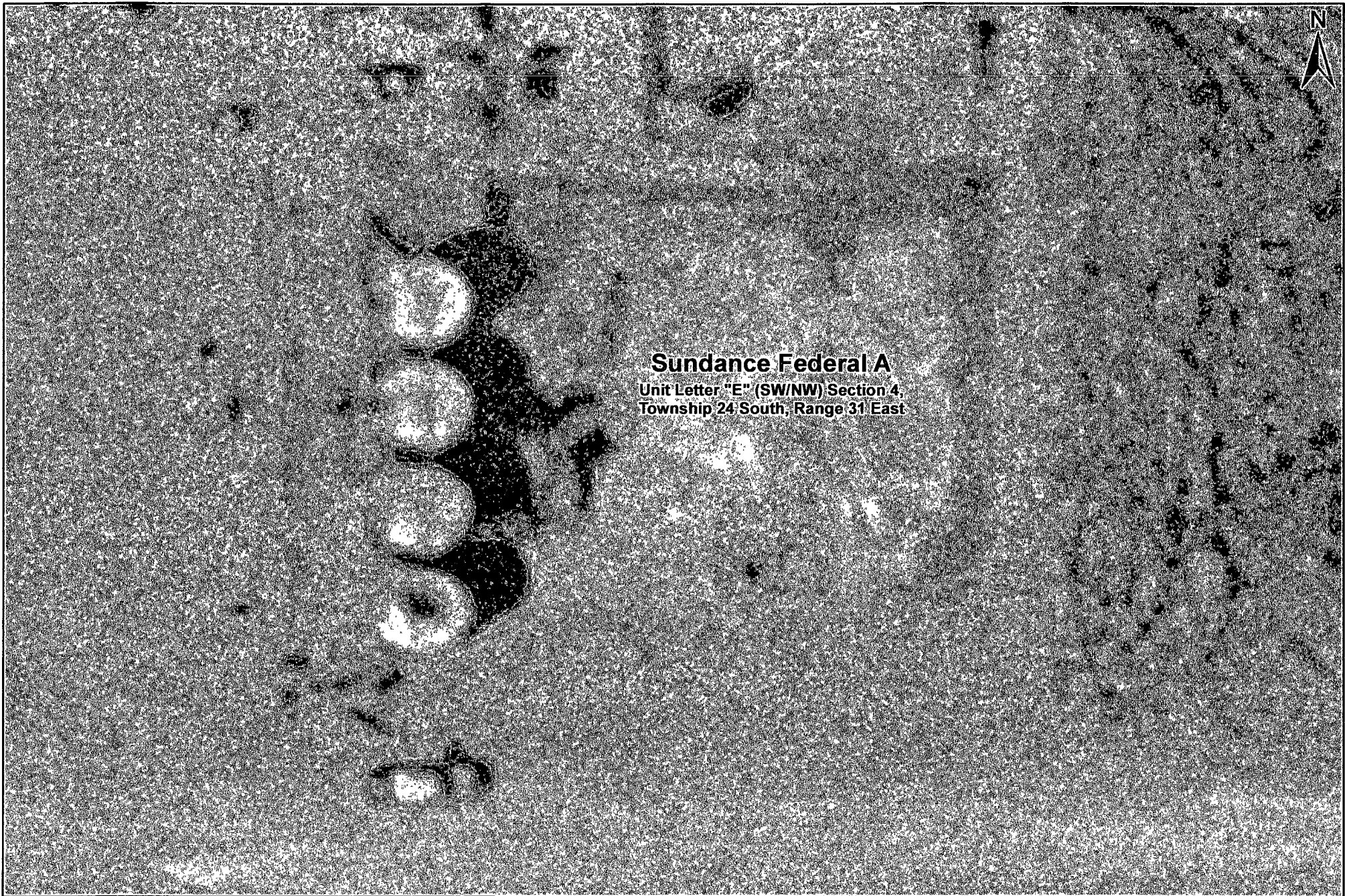


View to the north of the excavated area at the Sundance Federal A Tank Battery (9/18/2012)

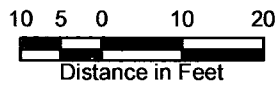


View to the north of **soil sample location** Sink Hole Floor @ 15'





**Sundance Federal A**  
Unit Letter "E" (SW/NW) Section 4,  
Township 24 South, Range 31 East



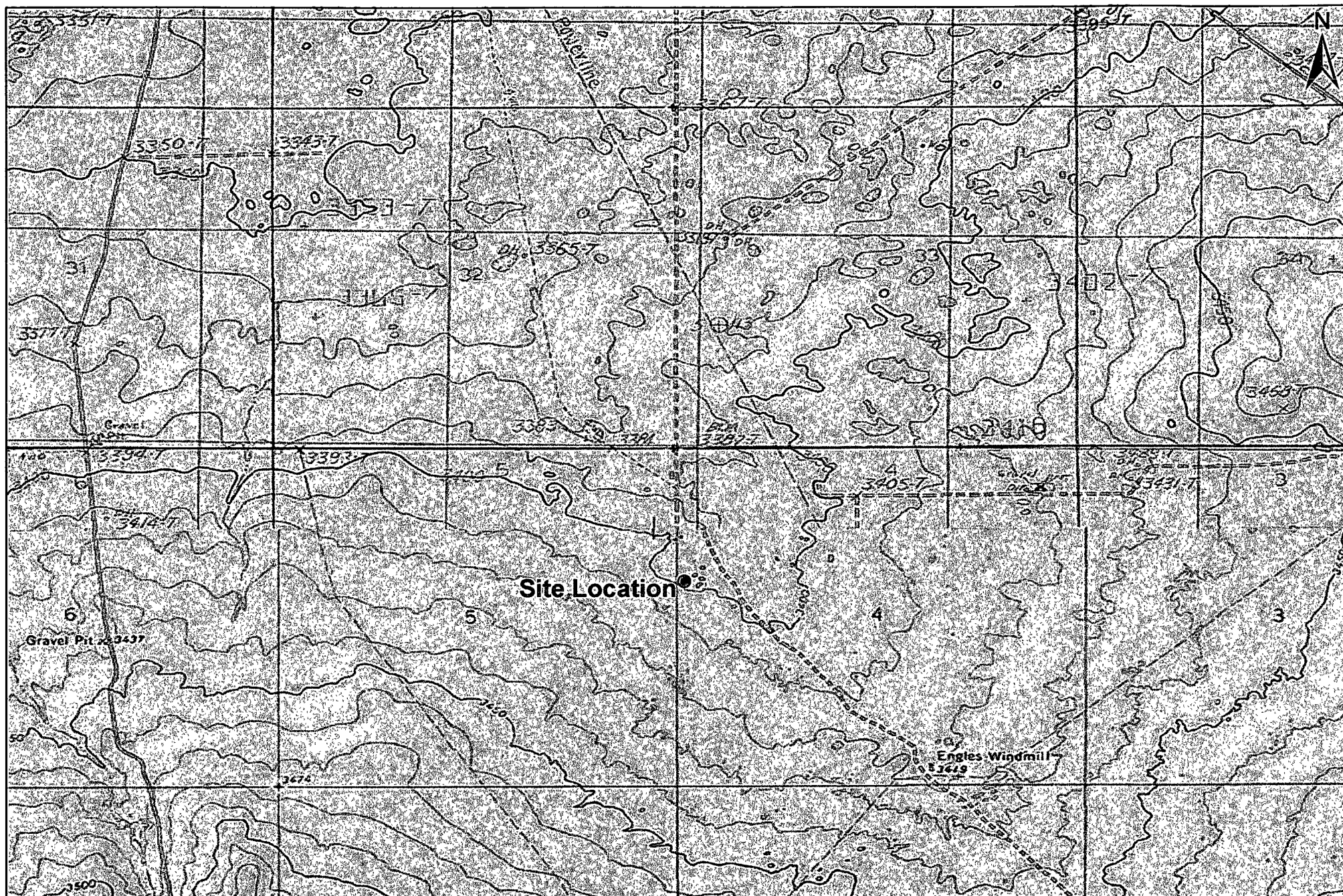
**Figure 3**  
**Aerial Site Map**  
**Plains Pipeline, LP**  
**Sundance Federal A**  
**Eddy County, New Mexico**  
**Plains Ref. #: PPS Sundance Federal A**



Basin Environmental Service Technologies, LLC  
3100 Plains Hwy.  
Lovington, NM 88260

Drawn By: BJA	Checked By: BRB
September 18, 2012	Scale: 1" = 24'





1,000 500 0 1,000 2,000  
 Distance in Feet

**Figure 1**  
**Site Location Map**  
**Plains Pipeline, LP**  
**Sundance Federal A**  
**Eddy County, New Mexico**  
**Plains Ref. #: PPS Sundance Federal A**



Basin Environmental Service Technologies, LLC  
 3100 Plains Hwy  
 Lovington, NM 88260

Drawn By: BJA	Checked By: BRB
September 18, 2012	Scale: 1" = 2000'