

Rec: 4-15-2005  
Sup: 5-5-2005  
PMESD-511635571

April 11, 2005

New Mexico Oil Conservation Division  
Attn: Michael E. Stogner  
1220 South St. Francis Dr.  
Santa Fe, New Mexico 87505

30-045-33016

2005 APR 15 AM 11 35

RE: Administrative approval of Unorthodox Location  
Trujillo 29-10-21 #2S well  
2370' FSL & 1155' FEL  
Section 21, T29N, R10W  
San Juan County, New Mexico

Dear Mr. Stogner:

Energen Resources Corporation (Energen) hereby requests Administrative Approval for an Unorthodox Location of its proposed Trujillo 29-10-21 #2S Fruitland Coal well under the provisions of New Mexico Oil Conservation Division (NMOCD) order R-8768.

This well is located 2370' fsl & 1155' fel of Section 21-T29N-R10W, San Juan County, New Mexico and dedicated to a spacing unit consisting of the S/2 of Section 21, in the Basin Fruitland Coal gas pool.

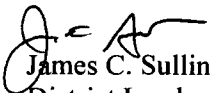
This well is closer than 660 feet to the Northern boundary of the proration unit, causing an unorthodox location. This location was moved to its current unorthodox location due to the fact that County Road 4800 runs through the middle of the S/2 of this section with many houses, barns and other structures on both sides of said County road. After many discussions with the landowners involved with this proposed location, this was the only location that would minimize the impact on the existing residences and future development plans of the landowners.

A copy of this application is being sent to all affected owners by certified mail-return receipt request with a request that they furnish your office in Santa Fe a Waiver of Objection within twenty (20) days of receipt of this application.

Attached is a well location plat showing dedicated acreage (C-102), a plat showing the offsetting spacing units and Fruitland Coal wells, if any, and a topographic map.

Your favorable consideration of this request would be appreciated.

Sincerely,

  
James C. Sullins  
District Landman

List of Affected Owners  
N/2 Section 21-29N-10W  
Fruitland Coal formation

ConocoPhillips  
Burlington Resources Oil & Gas Co.  
BP America Production Company  
Anthony F. Zarlengo  
Elm Ridge Exploration Company  
DELHI-Trading Incorporated  
Robert F. Murchison  
Georgia Lee Fergen  
J. Glen Turner, Jr.  
Fred E. Turner  
John L. Turner  
Mary Frances Turner, Jr. Trust  
L.G. Krieger Trust  
CWM and VLM Trust  
Frank & Henrietta Schultz Revocable Trust  
William G. Webb  
Bill Bledsoe, Trustee  
XTO Energy Inc.  
Barbara Kay Kullas  
Blue Creek Inc.  
Jean J. Bleakley  
Harold J. Bleakley Trust  
Candace Lenoir Cox  
Georgia Lee Fe

TRUJILLO 29-10-21 #2S  
 BASIN FRUITLAND COAL  
 2370' FSL & 1155' FEL, SECTION 21, T-29N, R-10-W  
 San Juan County, New Mexico  
 Affected Owners and Offset Spacing Unit Plat

Hubbell Com # 296	No Fruitland Coal Wells	Albright #1
Burlington Resources	ConocoPhillips, et al (See attached list of affected owners)	Burlington Resources
Chapson 29-10-20 #2 Chapson 29-10-20 #2S	Trujillo 29-10-21 #2 Trujillo 29-10-21 #2S	Candelaria 29-10-22 #1
Energien	Energien	Energien
Adair #1	Davis 29-10-28 #2	Brown 29-10-27 #2
XTO Energy	Energien	Energien
	Pollock Com E #1R BP America	
	W/2 28	W/2 27
	E/2 28	

R 10 W

T  
 29  
 N

## District I

1625 N. French Dr., Hobbs, NM 88240

## District II

1301 W. Grand Avenue, Artesia, NM 88210

## District III

1000 Rio Brazos Rd., Aztec, NM 87410

## District IV

1220 S. St. Francis Dr., Santa Fe, NM 87505

State of New Mexico

Energy, Minerals &amp; Natural Resources Department

## OIL CONSERVATION DIVISION

1220 South St. Francis Dr.

Santa Fe, NM 87505

Form C-102

Revised June 10, 2003

Submit to Appropriate District Office

State Lease - 4 Copies

Fee Lease - 3 Copies

☐ AMENDED REPORT

## WELL LOCATION AND ACREAGE DEDICATION PLAT

<sup>1</sup> API Number		<sup>2</sup> Pool Code		<sup>3</sup> Pool Name UP FRUITLAND COAL	
<sup>4</sup> Property Code		<sup>5</sup> Property Name TRUJILLO 29-10-21			<sup>6</sup> Well Number 2S
<sup>7</sup> OGRID No.		<sup>8</sup> Operator Name ENERGEN RESOURCES CORPORATION			<sup>9</sup> Elevation 5602'

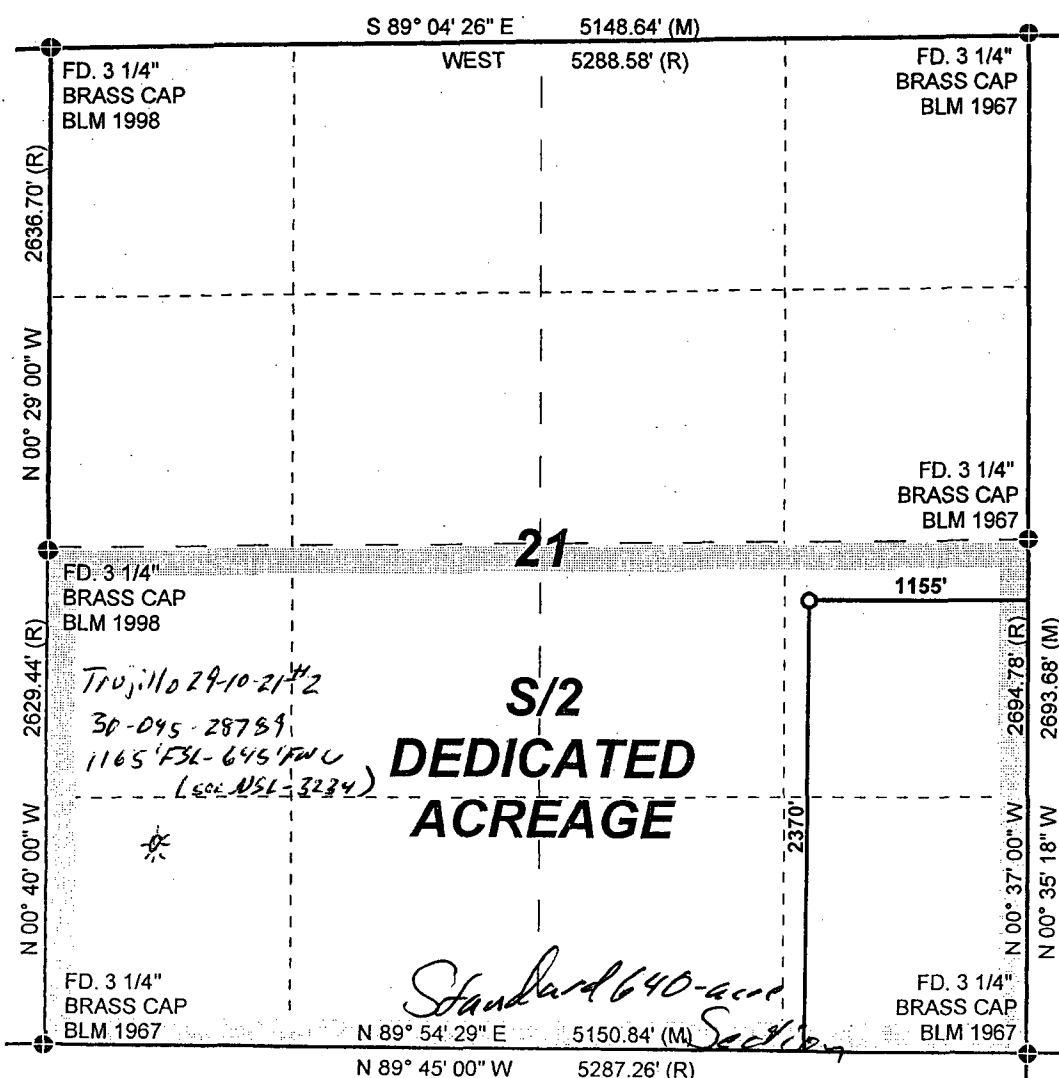
<sup>10</sup> Surface Location

UL or lot no.	Section	Township	Range	Lot Idn	Feet from the	North/South line	Feet from the	East/West line	County
I	21	29N	10W		2370	SOUTH	1155	EAST	SAN JUAN

<sup>11</sup> Bottom Hole Location If Different From Surface

UL or lot no.	Section	Township	Range	Lot Idn	Feet from the	North/South line	Feet from the	East/West line	County
<sup>12</sup> Dedicated Acres 320	<sup>13</sup> Joint or Infill	<sup>14</sup> Consolidation Code	<sup>15</sup> Order No.						

NO ALLOWABLE WILL BE ASSIGNED TO THIS COMPLETION UNTIL ALL INTERESTS HAVE BEEN CONSOLIDATED OR A NON-STANDARD UNIT HAS BEEN APPROVED BY THE DIVISION

<sup>17</sup> OPERATOR CERTIFICATION

I hereby certify that the information contained herein is true and complete to the best of my knowledge and belief.

Signature

Printed Name

Title and E-mail Address

Date

<sup>18</sup> SURVEYOR CERTIFICATION

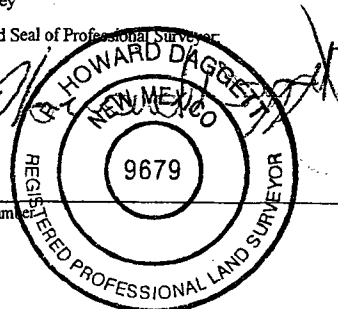
I hereby certify that the well location shown on this plat was plotted from field notes of actual surveys made by me or under my supervision, and that the same is true and correct to the best of my belief.

Date of Survey

Signature and Seal of Professional Surveyor

NM #9679

Certificate Number



# ENERGEN RESOURCES

TRUJILLO 29-10-21 #2S

2370' FSL & 1155 FEL, SECTION 21, T29N, R10W, N.M.P.M.,  
SAN JUAN COUNTY, NEW MEXICO

140' NEW ACCESS

