

**Unocal Oil & Gas Division**  
Unocal Corporation  
3300 North Butler Avenue  
Suite 200  
Farmington, New Mexico 87401  
Telephone (505) 326-7600  
Fax: (505) 326-6145



December 30, 1993

**CERTIFIED RETURN RECEIPT REQUESTED**

Farmington District

**New Mexico Oil Conservation Division**  
Attn: Mr. William J. LeMay  
P.O. Box 2088  
Santa Fe, New Mexico 87504-2088

**New Mexico Oil Conservation Division**  
Attn: Mr. Frank Chavez  
1000 Rio Brazos Road  
Aztec, New Mexico 87410

Dear Sirs:

Union Oil Company of California (UNOCAL) requests permission to downhole commingle production from the Blanco Mesaverde and Basin Dakota formations in the following well:

Rincon Unit No. 130  
990' FNL, 990' FEL  
Section 32, T27N, R6W  
Rio Arriba County, New Mexico

As provided by Order No. R-9893, administrative approval may be granted without notice and hearing.

As required for an exception to rule 303-A, the following information is attached:

1. An acreage dedication plat showing offset lease ownership.
2. A Form C-116 showing current productivity from each zone.
3. A wellbore diagram with completion detail.
4. A bottomhole pressure from each zone and a calculated adjustment to a common datum.
5. Gas analyses from each zone.
6. An allocation formula for commingled production.
7. A copy of the notification letter sent to all offset operators and the Bureau of Land Management.

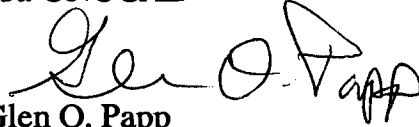
The Blanco Mesaverde formation is currently marginally economic. Commingling will allow for better lift of liquids production and benefits from compression.

Both zones produce essentially dry gas. Therefore, the respective formation fluids are compatible. Also, no crossflow will occur between the commingled zones.

If you have any questions, please contact Dana Delventhal at (505)326-7600. Thank you for your consideration in this matter.

Sincerely,

Union Oil Company of California  
dba UNOCAL

A handwritten signature in black ink, appearing to read "Glen O. Papp". The signature is written in a cursive style with a large initial "G" and "P".

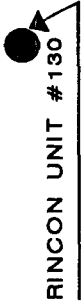
Glen O. Papp  
Field Superintendent

Attachments

GOP/DLD/df

# OFFSET LEASE OWNERSHIP

R 6 W

30	29	28
31	32 RINCON UNIT #130 	CAULKINS 3547 33
6	CAULKINS SF079186 CAULKINS 3551 5	CAULKINS 3551 4

T 27 N

T 26 N

Submit 2 copies to Appropriate District Office.  
 DISTRICT I  
 P.O. Box 1980, Hobbs, NM 88240  
 DISTRICT II  
 P.O. Drawer DD, Artesia, NM 88210  
 DISTRICT III  
 1000 Rio Brazos Rd., Aztec, NM 87410

State of New Mexico  
 Energy, Minerals and Natural Resources Department  
**OIL CONSERVATION DIVISION**  
 P.O. Box 2088  
 Santa Fe, New Mexico 87504-2088

Form C-1116  
 Revised 1/1/89

**GAS - OIL RATIO TEST**

Operator		Pool		County										
Union Oil Company of California		Blanco Mesaverde/Basin Dakota		Rio Arriba										
Address			TYPE OF TEST - (X)		Completion									
3300 North Butler, Suite 200, Farmington, New Mexico 87401			Scheduled <input type="checkbox"/>		Special <input type="checkbox"/>									
LEASE NAME	WELL NO.	LOCATION			DATE OF TEST	CHOKE SIZE	TBG. PRESS.	DAILY ALLOWABLE	LENGTH OF TEST HOURS	PROD. DURING TEST			GAS - OIL RATIO CU FT/BBL.	
		U	S	T						R	WATER BBL.	GRAV. OIL		OIL BBL.
Rincon Unit	130	A	32	27N	6W									
Blanco Mesaverde						F 64/64"	298		24	-0-	0.4	34	85,000	
Basin Dakota						F 64/64"	292		24	-0-	5	450	90,000	

**INSTRUCTIONS:**

During gas-oil ratio test, each well shall be produced at a rate not exceeding the top unit allowable for the pool in which well is located by more than 25 percent. Operator is encouraged to take advantage of this 25 percent tolerance in order that well can be assigned increased allowables when authorized by the Division.  
 Gas volumes must be reported in MCF measured at a pressure base of 15.025 psia and a temperature of 60° F.  
 Specific gravity base will be 0.60.  
 Report casing pressure in lieu of tubing pressure for any well producing through casing.

I hereby certify that the above information is true and complete to the best of my knowledge and belief.

Signature  
 Glen O. Papp  
 Field Superintendent

Printed name and title  
 December 30, 1993  
 Date  
 (505)326-7600  
 Telephone No.

(See Rule 301, Rule 1116 & appropriate pool rules.)

# RINCON UNIT #130

990' FNL, 990' FEL  
SEC. 32, T27N, R6W

13 3/8", 48#, H-40 CSA 327'

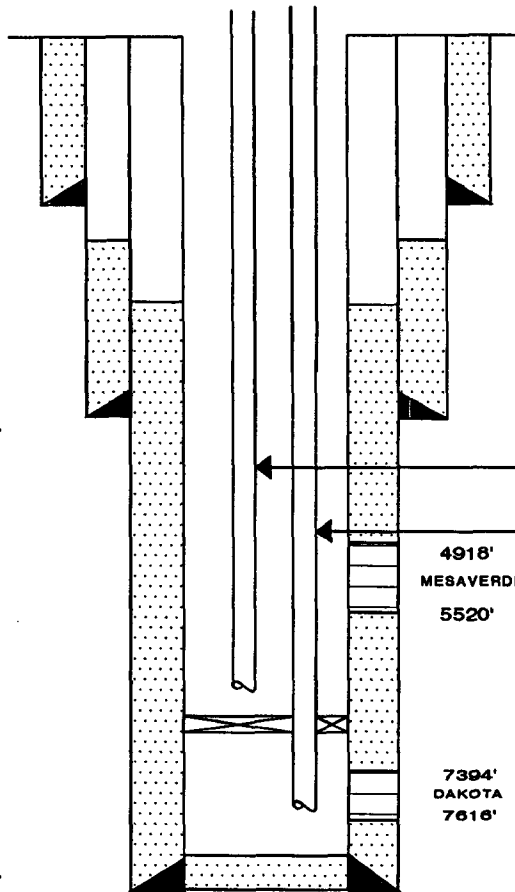
CMT W/ 244 SX  
TOC AT SURFACE.

9 5/8", 36#, J-55  
CASING SET AT 3328'

CMT W/ 170 SX  
TOC AT 2465' BY TEMP SURV.

BAKER 'D' PKR AT 6669'

7", 23# N-80 AND J-55  
CASING SET AT 7701'  
CMT W/ 964 SX  
TOC AT 3157' BY TEMP SURV.



1 1/4" TBG AT 5517'

2 3/8" TBG AT 7584'

4918'  
MESAVERDE  
5520'

7394'  
DAKOTA  
7616'

PBD 7636'

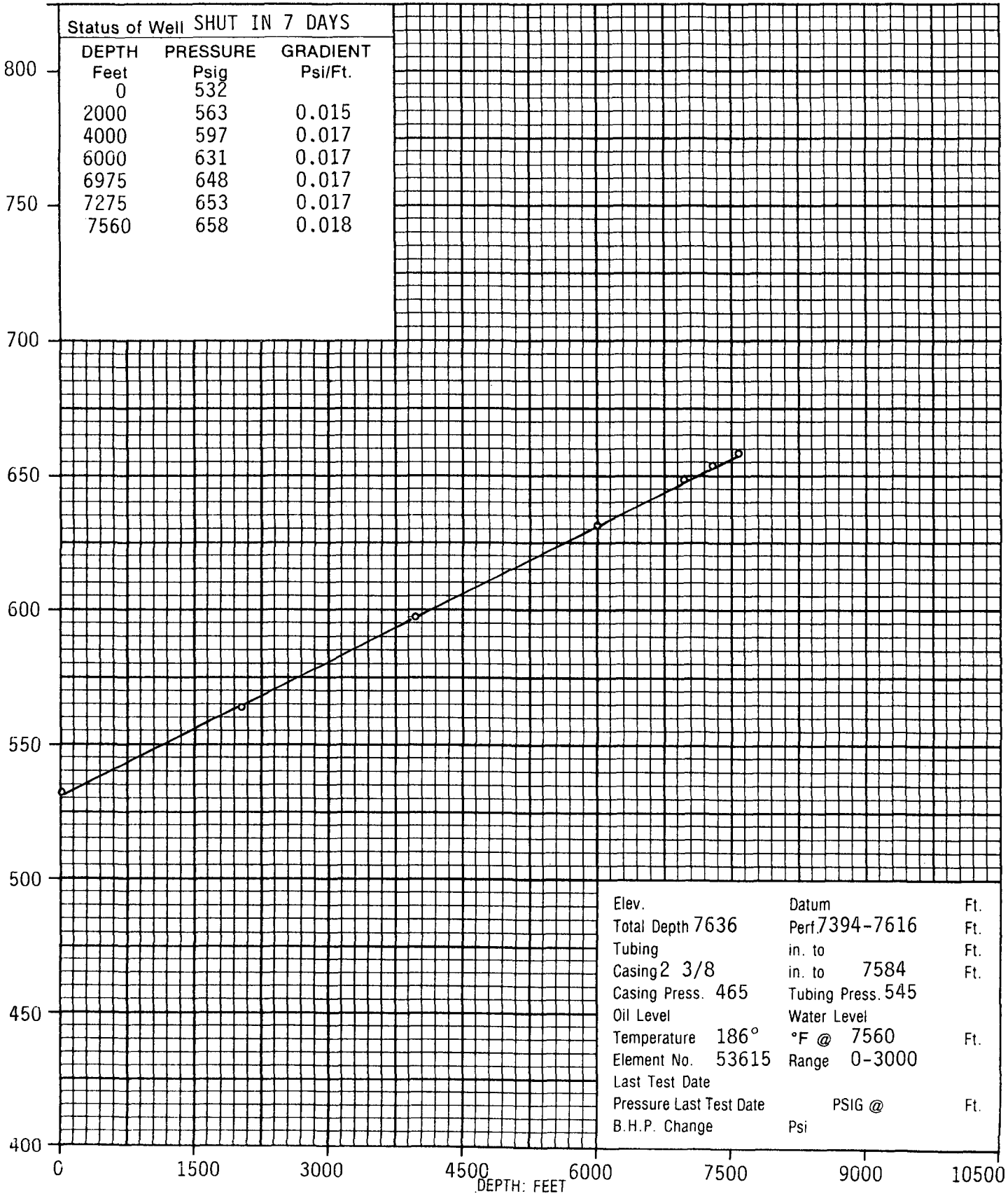


Company UNOCAL Lease RINCON UNIT Well No. 130  
 Field SAN JUAN BASIN County RIO ARRIBA State N.M.  
 Formation DAKOTA- MESA VERDE Test Date 9-21-93

Status of Well SHUT IN 7 DAYS

DEPTH	PRESSURE	GRADIENT
Feet	Psig	Psi/Ft.
0	532	
2000	563	0.015
4000	597	0.017
6000	631	0.017
6975	648	0.017
7275	653	0.017
7560	658	0.018

PRESSURE POUNDS PER SQUARE INCH GAUGE



Elev.	Datum	Ft.
Total Depth 7636	Perf. 7394-7616	Ft.
Tubing	in. to	Ft.
Casing 2 3/8	in. to 7584	Ft.
Casing Press. 465	Tubing Press. 545	
Oil Level	Water Level	
Temperature 186°	°F @ 7560	Ft.
Element No. 53615	Range 0-3000	
Last Test Date		
Pressure Last Test Date	PSIG @	Ft.
B.H.P. Change	Psi	



Page 14 of 19

File 2-25399-FL&P

COMPANY UNOCAL LEASE RINCON UNIT WELL NO. 130  
 FIELD \_\_\_\_\_ COUNTY RIO ARRIBA STATE NEW MEXICO  
 FORMATION MESA VERDE TEST DATE \_\_\_\_\_ TIME \_\_\_\_\_

FLUID LEVEL REPORT

WELL DATA

Elevation \_\_\_\_\_ feet Datum \_\_\_\_\_ feet subsea Total Depth \_\_\_\_\_ feet  
 Perforations 5368-5520 feet Test Depth 5444(MP) feet Packer 6669 feet  
 Tubing Size 1 1/4 in. to 5517 feet Tubing Pressure 460 psig  
 Casing Size \_\_\_\_\_ in. to \_\_\_\_\_ feet Casing Pressure 465 psig  
 Oil Level \_\_\_\_\_ feet Water Level \_\_\_\_\_ feet Average Tubing Joint 31.5 feet  
 Well Makes 0 % Oil, 100 % Water Atmospheric Temperature \_\_\_\_\_ °F  
 Status of Well Shut in 7 days Operator JR-SB Unit No. P-204

PRESSURE DATA

	Feet	Gradient Psig/Ft.	Psi
Casing Pressure			465
GAS			
Average Tubing Joints <u>31.5</u> ft. Joints to Fluid <u>169</u> Feet to Fluid.	5324	0.013	69
OIL			
Fluid Column Length _____ ft. % Oil _____ Oil Column Length.			
WATER			
Fluid Column Length <u>120</u> Ft. % Water <u>0.430</u> Water Column Length.	120	0.430	52

PRESSURE AT TEST DEPTH

5444 586

Calculated subsurface pressure at datum depth of 5444 feet subsea is 586 psig  
 Last Test Date \_\_\_\_\_ Pressure Last Test \_\_\_\_\_ psig BHP Change \_\_\_\_\_ psi  
 Remarks: \_\_\_\_\_

RINCON UNIT NO. 130

After a 7 day SI period:

$$\text{Mesaverde BHP} = 586 \text{ psi @ } 5444'$$

$$\text{Dakota BHP} = 658 \text{ psi @ } 7560'$$

$$\text{Gas Gradient} = 0.017 \text{ psi/ft}$$

Adjusting to a common datum of 5444':

$$\text{Mesaverde BHP} = 586 \text{ psi}$$

$$\text{Dakota BHP} = 658 - [(0.017)(7560 - 5444)] = 622 \text{ psi}$$

Therefore the reservoir pressures fall within the 50% requirement.



EL PASO NATURAL GAS COMPANY  
 VOLUME ACCOUNTING DEPARTMENT  
 MEASUREMENT DIVISION  
 POST OFFICE BOX 1492  
 EL PASO, TEXAS 79978  
 PHONE:(915) 541-5267

DATE 6/08/93 CHROMATOGRAPHIC GAS ANALYSIS REPORT

MAILEE  
 94100 UNION OIL COMPANY OF CALIFORNIA  
 ATTN: SHARON L. MILLER  
 P.O. BOX 671  
 MIDLAND, TX 79702-0671

METER NUMBER 72573 - RINCON UNIT NP #130 MV  
 OPERATOR 9165 - UNION OIL CO OF CALIF

ANALYSIS DATE 4/07/93 TYPE CODE 2 - ACTUAL  
 SAMPLE DATE 4/01/93 H2S GRAINS 0  
 EFFECTIVE DATE 5/01/93 LOCATION D - DANIELS FM  
 EFFECTIVE FOR 6 MONTHS

COMPONENTS	NORMALIZED MOL %	GPM
CO2	1.32	.000
H2S	.00	.000
N2	.42	.000
METHANE	84.28	.000
ETHANE	8.54	2.284
PROPANE	3.02	.832
ISO-BUTANE	.67	.219
NORM-BUTANE	.78	.246
ISO-PENTANE	.35	.128
NORM-PENTANE	.20	.072
HEXANE PLUS	.42	.183
	100.00	3.964

SPECIFIC GRAVITY .684

MIXTURE HEATING VALUE  
 (BTU @ 14.73 DRY) 1175

RATIO OF SPECIFIC HEATS .000

NO TEST SECURED FOR H2S CONTENT

EL PASO NATURAL GAS COMPANY  
 VOLUME ACCOUNTING DEPARTMENT  
 MEASUREMENT DIVISION  
 POST OFFICE BOX 1492  
 EL PASO, TEXAS 79978  
 PHONE: (915) 541-5287

CHROMATOGRAPHIC GAS ANALYSIS REPORT

DATE 7/08/92

MAILEE  
 94100

UNION OIL CO. OF CALIFORNIA  
 ATTN: MIDLAND PRODUCTION DEPT.  
 P.O. BOX 871  
 MIDLAND, TEXAS 79702

METER NUMBER 72574 - RINCON UNIT #130 DK  
 OPERATOR 9165 - UNION OIL CO OF CALIF

ANALYSIS DATE 6/14/92 TYPE CODE 2 - ACTUAL  
 SAMPLE DATE 6/12/92 H2S GRAINS 0  
 EFFECTIVE DATE 7/01/92 LOCATION F - FARMINGTON  
 EFFECTIVE FOR 3 MONTHS

COMPONENTS	NORMALIZED MOL. %	GPM
CO2	1.31	.000
H2S	.00	.000
N2	.45	.000
METHANE	85.88	.000
ETHANE	7.42	1.985
PROPANE	2.95	.813
ISO-BUTANE	.54	.177
NORM-BUTANE	.77	.243
ISO-PENTANE	.30	.110
NORM-PENTANE	.18	.068
HEXANE PLUS	<u>.19</u>	<u>.083</u>
	100.00	3.480

RINCON UNIT NO. 130  
ALLOCATION FORMULA

<u>GAS PRODUCTION:</u>	Mesaverde Rate	34 MCFD
	Dakota Rate	<u>450</u> MCFD
	Total Rate	<u>484</u> MCFD

Therefore,	Mesaverde	7%
	Dakota	93%

<u>OIL PRODUCTION:</u>	Mesaverde Rate	0.4 BOPD
	Dakota Rate	<u>5.0</u> BOPD
	Total Rate	<u>5.4</u> BOPD

Therefore,	Mesaverde	7%
	Dakota	93%

Unocal Oil & Gas Division  
Unocal Corporation  
3300 North Butler Avenue  
Suite 200  
Farmington, New Mexico 87401  
Telephone (505) 326-7600  
Fax: (505) 326-6145

**UNOCAL** 

December 30, 1993

Farmington District

United States Department of the Interior  
Bureau of Land Management  
1235 La Plata Highway  
Farmington, New Mexico 87401

Dear Sirs:

Union Oil Company of California (UNOCAL) has requested permission from the New Mexico Oil Conservation Division to downhole commingle production from the Blanco Mesaverde and Basin Dakota formations in the following well:

Rincon Unit No. 130  
990' FNL, 990' FEL  
Section 32, T27N, R6W  
Rio Arriba County, New Mexico

If you have any objections to this proposal, please notify the NMOCD within twenty (20) days. If you have any questions about this application, please contact Dana Delventhal at (505)326-7600.

Sincerely,

Union Oil Company of California  
dba UNOCAL



Glen O. Papp  
Field Superintendent

GOP/DLD/df

Unocal Oil & Gas Division  
Unocal Corporation  
3300 North Butler Avenue  
Suite 200  
Farmington, New Mexico 87401  
Telephone (505) 326-7600  
Fax: (505) 326-6145



December 30, 1993

Farmington District

Caulkins Oil Company  
310 North First  
Bloomfield, New Mexico 87413

Dear Sirs:

Union Oil Company of California (UNOCAL) has requested permission from the New Mexico Oil Conservation Division to downhole commingle production from the Blanco Mesaverde and Basin Dakota formations in the following well:

Rincon Unit No. 130  
990' FNL, 990' FEL  
Section 32, T27N, R6W  
Rio Arriba County, New Mexico

If you have any objections to this proposal, please notify the NMOCD within twenty (20) days. If you have any questions about this application, please contact Dana Delventhal at (505)326-7600.

Sincerely,

Union Oil Company of California  
dba UNOCAL

Glen O. Papp  
Field Superintendent

GOP/DLD/df



STATE OF NEW MEXICO

ENERGY, MINERALS and NATURAL RESOURCES DEPARTMENT

CONSERVATION DIVISION  
RECEIVED

OIL CONSERVATION DIVISION  
AZTEC DISTRICT OFFICE

1000 RIO BRAZOS ROAD  
AZTEC, NEW MEXICO 87410  
(505) 334-6178

94 JAN 27 AM 10 03

Date: 1-26-94

*attn: Ben Stone*

Oil Conservation Division  
P.O. Box 2088  
Santa Fe, NM 87504-2088

RE: Proposed MC \_\_\_\_\_  
Proposed NSL \_\_\_\_\_  
Proposed WFX \_\_\_\_\_  
Proposed NSP \_\_\_\_\_

Proposed DHC X \_\_\_\_\_  
Proposed SWD \_\_\_\_\_  
Proposed PMX \_\_\_\_\_  
Proposed DD \_\_\_\_\_

Gentlemen:

I have examined the application received on 1-4-94

for the UNOCAL OPERATOR Pincon Unit #130 LEASE & WELL NO.

A-32-27N-06W and my recommendations are as follows:  
UL-S-T-R

Approve  
\_\_\_\_\_  
\_\_\_\_\_  
\_\_\_\_\_  
\_\_\_\_\_  
\_\_\_\_\_

Yours truly,

Eric Bush

*DHC-961*