

2.1.95

**SAMEDAN OIL CORPORATION**

12600 NORTHBOROUGH, #250  
HOUSTON, TEXAS 77067  
(713) 876-6150 FAX (713) 876-6106

OIL CONSERVATION DIVISION  
RECEIVED

95 JAN 13 AM 8 52

January 6, 1995

Oil Conservation Division  
PO Box 2088  
Santa Fe, New Mexico 87504-2088

Atten: William LeMay:

**RE: Down Hole Commingling  
Branex Federal Well #1  
Unit L, Sec. 12, T-23S, R-37E  
Cline Tubb (Assoc)  
Cline Lower Paddock/Blindbry**

Samedan Oil Corporation requests administrative approval for the down hole commingling of the above mentioned pools.

We have enclosed the following:

1. Area Plat showing ownership of offsetting leases.
2. Plat showing acreage dedicated to the well.
3. Names and addresses of offsetting operators and a copy of the letter to notify them and the United States Bureau of Land Management of our intention.
4. Division Form C-116 showing 24-hr productivity test from each zone.
5. Well History and Prognostication of future production.
6. Estimated BHP for each artificially lifted zone.
7. Fluid description of each zone.
8. Valves of production.
9. Recommended formula for allocation of production.

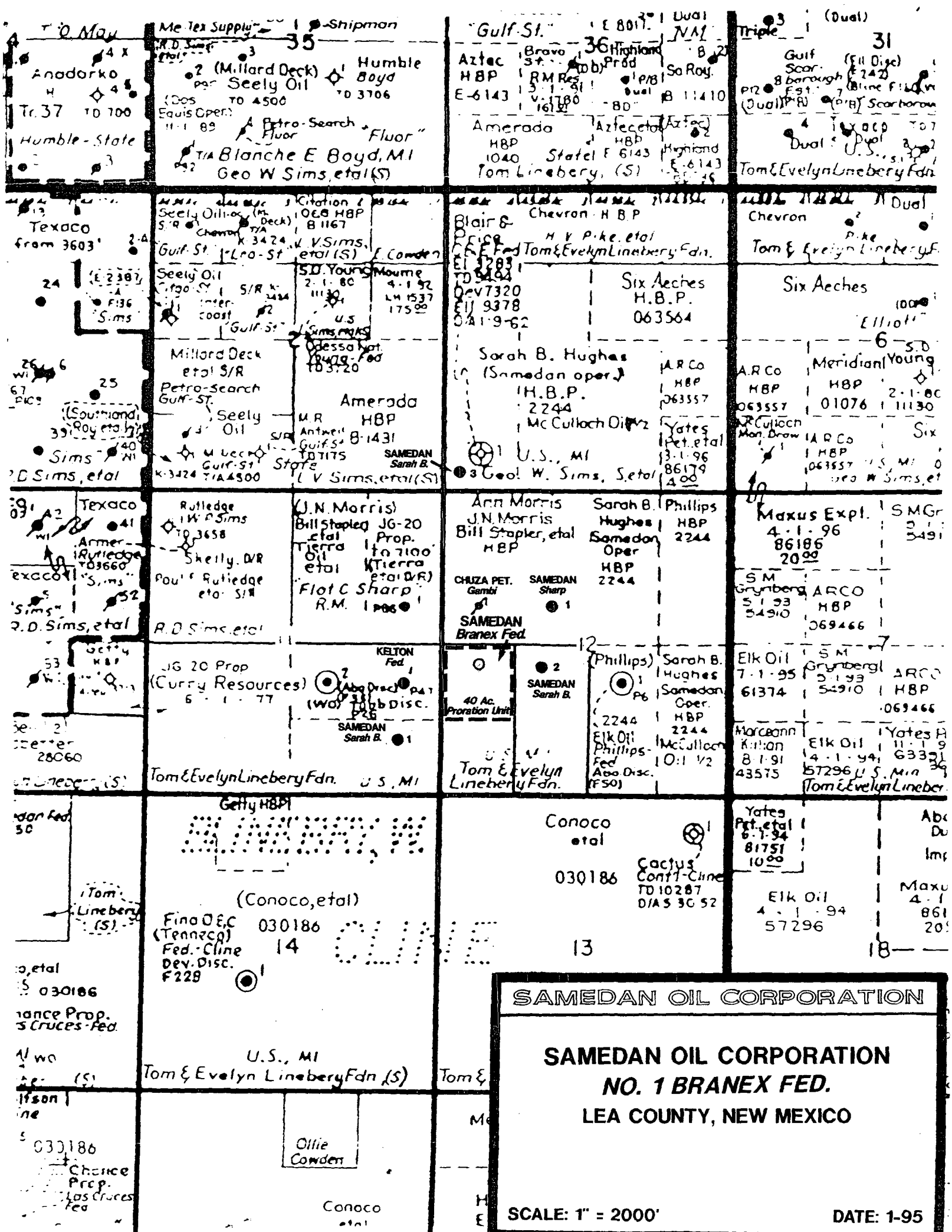
We appreciate your consideration in this matter. If you have any questions please call.

Thank you,

  
Judy Throneberry

attachments

xc: OCC - Hobbs District



**DISTRICT I**  
P. O. Box 1980  
Hobbs, NM 88240

**DISTRICT II**  
P. O. Drawer DD  
Artesia, NM 88210

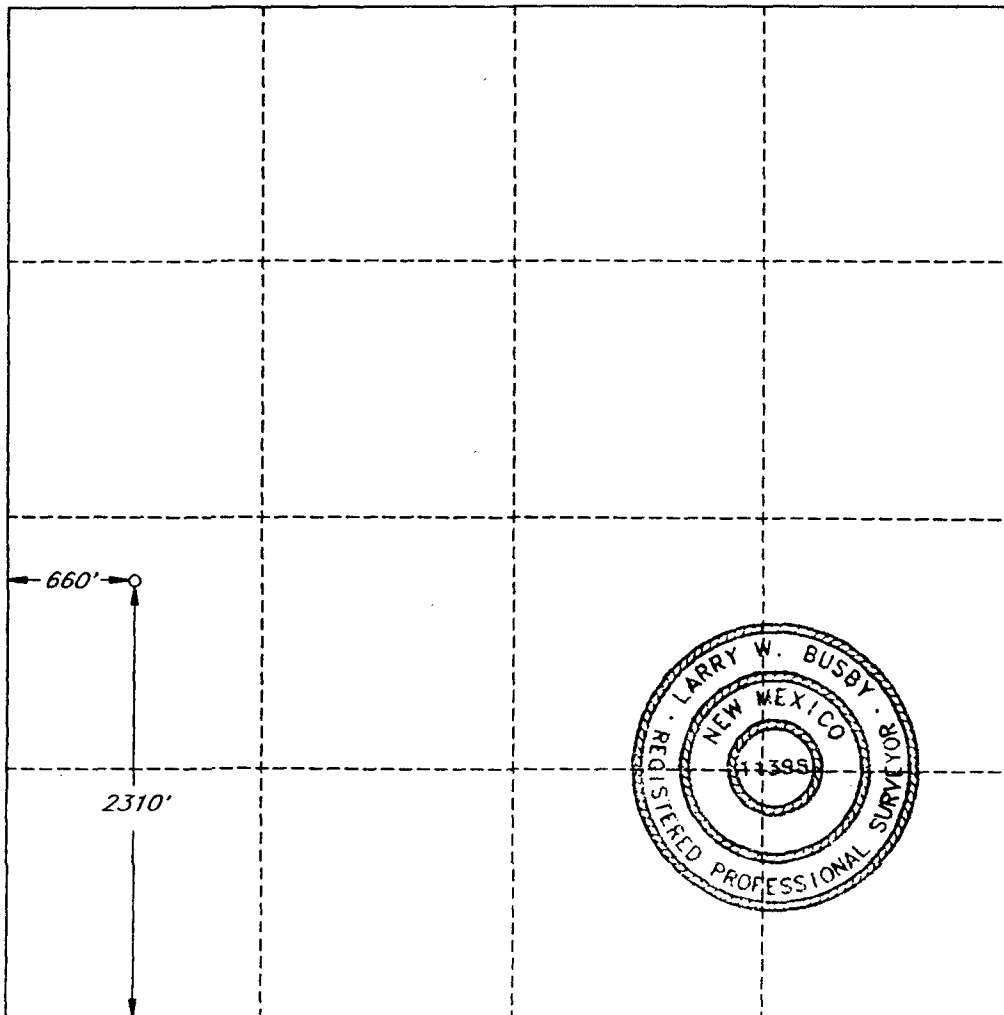
**DISTRICT III**  
1000 Rio Brazos Rd  
Aztec, NM 87410

**OIL CONSERVATION DIVISION**  
P. O. Box 2088  
Santa Fe, New Mexico 87504-2088

**WELL LOCATION AND ACREAGE DEDICATION PLAT**  
All distances must be from the outer boundaries of the section.

Operator <b>SAMEDAN OIL CORPORATION</b>			Lease <b>BRANEX FED.</b>		Well No. <b>1</b>
Unit Letter <b>L</b>	Section <b>12</b>	Township <b>23 SOUTH</b>	Range <b>37 EAST, N.M.P.M.</b>	County <b>LEA</b>	
Actual Footage Location of Well <b>2310</b> feet from the <b>SOUTH</b> line and <b>660</b> feet from the <b>WEST</b> line					
Ground Level Elev. <b>3281'</b>	Producing Formation <b>Cline Lower Padk/Blby</b>		Pool <b>Lower Paddock/Blinebry</b>		<b>40</b> Acres

1. Outline the acreage dedicated to the subject well by colored pencil or hatchure marks on the plat below.
2. If more than one lease is dedicated to the well, outline each and identify the ownership thereof (both as to working interest and royalty).
3. If more than one lease of different ownership is dedicated to the well, have the interest of all the owners been consolidated by communitization, unitization, forced-pooling, etc.?  
☐ Yes ☐ No. If answer is "yes", type of consolidation \_\_\_\_\_  
If the answer is "no", list the owners and tract descriptions which have actually been consolidated. (Use the reverse side of this form if necessary.) \_\_\_\_\_  
No allowable will be assigned to the well until all interests have been consolidated (by communitization, unitization, forced-pooling, or otherwise) or until a non-standard unit, eliminating such interest, has been approved by the division.



**OPERATOR CERTIFICATION**

I hereby certify that the information herein is true and complete to the best of my knowledge and belief.

Signature  
*Judy Thronberry*  
Printed Name  
**Judy Thronberry**  
Position  
**Div Production Clerk**  
Company  
**Samedan Oil Corporation**  
Date  
**01/06/95**

**SURVEYOR CERTIFICATION**

I hereby certify that the well location shown on this plat was plotted from field notes of actual surveys made by me or under my supervision, and that the same is true and correct to the best of my knowledge and belief.

Date Surveyed  
**SEPTEMBER 28, 1993**

Signature and Seal of  
Professional Surveyor

*[Signature]*

Certificate No.  
**LARRY W. BUSBY R.P.S. #11398**  
**LWB / 99302-1 / 45SE**

**DISTRICT I**

P. O. Box 1980  
Hobbs, NM 88240

**DISTRICT II**

P. O. Drawer DD  
Artesia, NM 88210

**DISTRICT III**

1000 Rio Brazos Rd  
Aztec, NM 87410

**OIL CONSERVATION DIVISION**

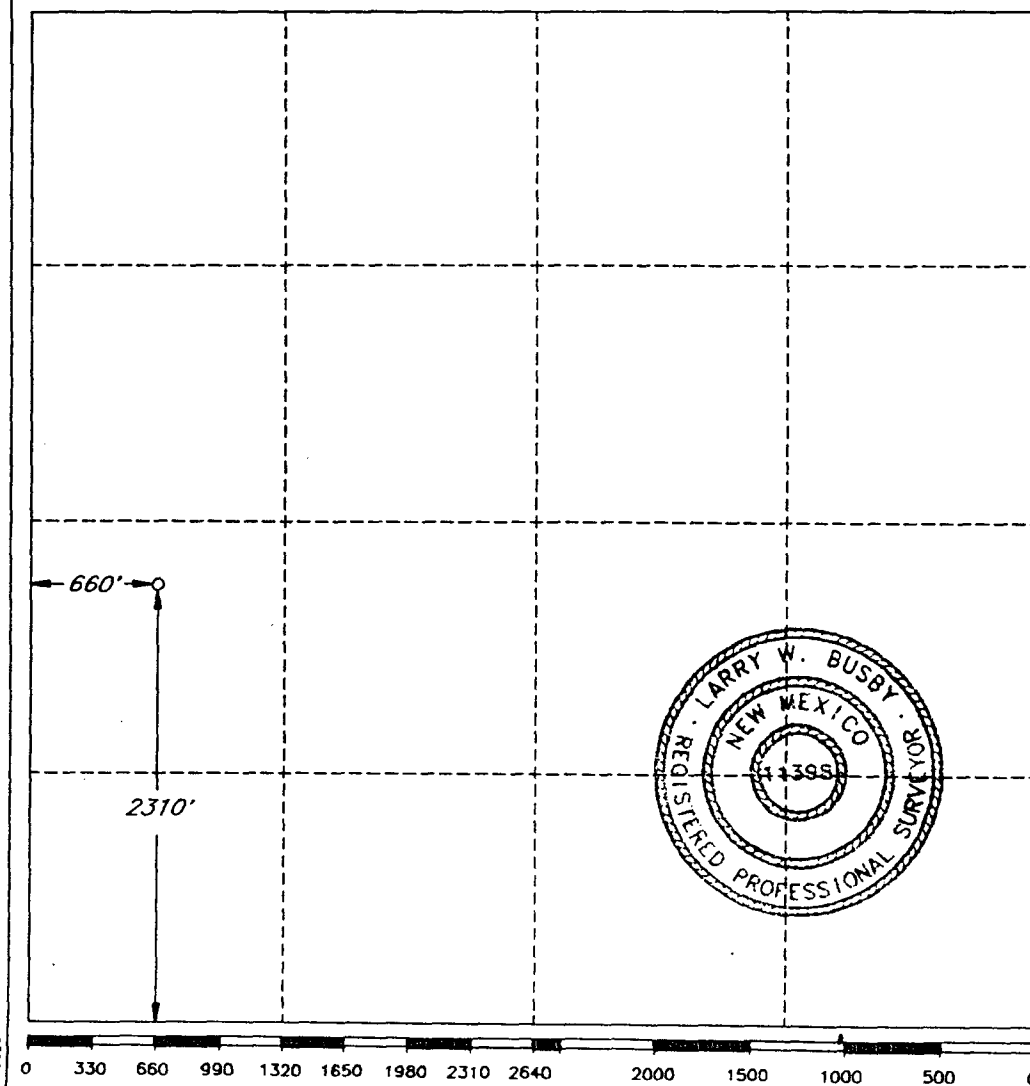
P. O. Box 2088  
Santa Fe, New Mexico 87504-2088

**WELL LOCATION AND ACREAGE DEDICATION PLAT**

All distances must be from the outer boundaries of the section.

Operator <b>SAMEDAN OIL CORPORATION</b>			Lease <b>BRANEX FED.</b>		Well No. <b>1</b>
Unit Letter <b>L</b>	Section <b>12</b>	Township <b>23 SOUTH</b>	Range <b>37 EAST, N.M.P.M.</b>	County <b>LEA</b>	
Actual Footage Location of Well					
2310 feet from the		<b>SOUTH</b>	line and	660 feet from the	<b>WEST</b> line
Ground Level Elev. <b>3281'</b>	Producing Formation <b>Cline Tubb (Assoc)</b>		Pool <b>Tubb (Assoc)</b>		40 Acres

1. Outline the acreage dedicated to the subject well by colored pencil or hatchure marks on the plat below.
2. If more than one lease is dedicated to the well, outline each and identify the ownership thereof (both as to working interest and royalty).
3. If more than one lease of different ownership is dedicated to the well, have the interest of all the owners been consolidated by communitization, unitization, forced-pooling, etc.?  
☐ Yes ☐ No. If answer is "yes", type of consolidation \_\_\_\_\_  
If the answer is "no", list the owners and tract descriptions which have actually been consolidated. (Use the reverse side of this form if necessary.) \_\_\_\_\_  
No allowable will be assigned to the well until all interests have been consolidated (by communitization, unitization, forced-pooling, or otherwise) or until a non-standard unit, eliminating such interest, has been approved by the division.



**OPERATOR CERTIFICATION**

I hereby certify that the information herein is true and complete to the best of my knowledge and belief.

Signature *Judy Throneberry*  
Printed Name **Judy Throneberry**  
Position **Div Production Clerk**  
Company **Samedan Oil Corporation**  
Date **01/06/95**

**SURVEYOR CERTIFICATION**

I hereby certify that the well location shown on this plat was plotted from field notes of actual surveys made by me or under my supervision, and that the same is true and correct to the best of my knowledge and belief.

Date Surveyed  
**SEPTEMBER 28, 1993**

Signature and Seal of  
Professional Surveyor

*[Signature]*  
Certificate No.  
**LARRY W. BUSBY R.P.S. #11398**  
**LWB / 99302-1 / 45SE**

**OFFSET OPERATORS AND WELLS**

CHUZA OPERATING  
PO BOX 953  
MIDLAND, TEXAS 79702  
(915) 686-8985

KELTON OPERATING  
PO BOX 276  
ANDREWS, TEXAS 79714  
(915) 523-6535

**NOTIFICATION:**

BUREAU OF LAND MANAGEMENT  
PO BOX 1778  
CARLSBAD, NEW MEXICO 88221-1778

**SAMEDAN OIL CORPORATION**

**12600 NORTHBOROUGH, #250  
HOUSTON, TEXAS 77067  
(713) 876-6150 FAX (713) 876-6106**

**January 6, 1995**

**Chuza Operating  
PO Box 953  
Midland, Texas 79702**

**RE Down Hole Commingling  
Branex Federal #1  
Unit L, Sec 12, T-23S, R-37E, Lea County  
Cline Tubb (Assoc) Zone  
Cline Lower Paddock/Blinebry Zone**

**This is to notify you as an offset operator of the Branex Federal #1, that we are applying for administrative approval for down hole commingling of Tubb (Assoc) and Lower Paddock/Blinebry production in the above mentioned well.**

**If you have any questions please contact Gary Hendricks at (713) 876-6150. If you have no objections please sign and return the enclosed letter to the New Mexico Oil Conservation Commission in the self-addressed stamped envelope as soon as possible to expedite matters. Any objections must be filed with the Commission within 20 days of the date of this letter.**

**Thank you for your time and consideration in this matter.**

**Sincerely**



**Judy Throneberry  
Division Production Clerk**

**attachments**

**xc: Oil Conservation Division  
Santa Fe, NM**

**SAMEDAN OIL CORPORATION**

**12600 NORTHBOROUGH, #250  
HOUSTON, TEXAS 77067  
(713) 876-6150 FAX (713) 876-6106**

**January 6, 1995**

**Kelton Operating Company  
PO Box 276  
Andrews, Texas 79714**

**RE           Down Hole Commingling  
              Branex Federal #1  
              Unit L, Sec 12, T-23S, R-37E, Lea County  
              Cline Tubb (Assoc) Zone  
              Cline Lower Paddock/Blinbry Zone**

**This is to notify you as an offset operator of the Branex Federal #1, that we are applying for administrative approval for down hole commingling of Tubb (Assoc) and Lower Paddock/Blinbry production in the above mentioned well.**

**If you have any questions please contact Gary Hendricks at (713) 876-6150. If you have no objections please sign and return the enclosed letter to the New Mexico Oil Conservation Commission in the self-addressed stamped envelope as soon as possible to expedite matters. Any objections must be filed with the Commission within 20 days of the date of this letter.**

**Thank you for your time and consideration in this matter.**

**Sincerely**



**Judy Throneberry  
Division Production Clerk**

**attachments**

**xc: Oil Conservation Division  
Santa Fe, NM**

**SAMEDAN OIL CORPORATION**

**12600 NORTHBOROUGH, #250  
HOUSTON, TEXAS 77067  
(713) 876-6150 FAX (713) 876-6106**

**January 6, 1995**

**Bureau of Land Management  
PO Box 1778  
Carlsbad, NM 88221-1778**

**Gentlemen:**

**RE:   *Down Hole Commingling  
Branex Federal Well #1  
Unit L, Sec 12, T-23S, R-37E, Lea County, NM  
Cline Tubb (Assoc) Zone  
Cline Lower Paddock/Blindbry Zone***

**This is to notify you of our application for administrative approval for down hole commingling of production in the above mentioned zones for the Branex Federal Well #1. I have attached a copy of the application.**

**If you have any questions please contact Gary Hendricks at (713) 876-6150.**

**Thank you,**



**Judy Throneberry  
Division Production Clerk**

**attachments**

**xc: Oil Conservation Division  
Santa Fe, NM**



Submit 2 copies to Appropriate District Office.

DISTRICT I  
P.O. Box 1980, Hobbs, NM 88240  
DISTRICT II  
P.O. Drawer DD, Artesia, NM 88210  
DISTRICT III  
1000 Rio Brazos Rd., Aztec, NM 87410

State of New Mexico  
Energy, Minerals and Natural Resources Department

Form C-116  
Revised 1/1/89

## OIL CONSERVATION DIVISION

P.O. Box 2088  
Santa Fe, New Mexico 87504-2088

### GAS - OIL RATIO TEST

Operator 020153 Samedan Oil Corporation		Pool 12411 Cline Lower Paddock/Blinebry		County Lea											
Address 12600 Northborough, #250, Houston, Texas 77067		TYPE OF TEST - (X)		Completion <input type="checkbox"/> Special <input checked="" type="checkbox"/>											
LEASE NAME	WELL NO.	LOCATION U S T R		DATE OF TEST	CHOKE SIZE	TBQ. PRESS.	DAILY ALLOW-ABLE	LENGTH OF TEST HOURS	PROD. DURING TEST WATER GRAV. OIL GAS BBL.S. BBL.S. M.C.F.		GAS - OIL RATIO CU.FT/BBL.				
013307 Branex Federal	1	L	12	23S	37E	01/05/95	F	24/64	185	24	4	40.2	8	194	24250

#### Instructions:

During gas-oil ratio test, each well shall be produced at a rate not exceeding the top unit allowable for the pool in which well is located by more than 25 percent. Operator is encouraged to take advantage of this 25 percent tolerance in order that well can be assigned increased allowables when authorized by the Division.

Gas volumes must be reported in MCF measured at a pressure base of 15.025 psia and a temperature of 60° F. Specific gravity base will be 0.60.

Report casing pressure in lieu of tubing pressure for any well producing through casing.

(See Rule 301, Rule 1116 & appropriate pool rules.)

I hereby certify that the above information is true and complete to the best of my knowledge and belief.

Signature Judy Throneberry

Printed name and title  
Judy Throneberry, Div Production Clerk

Date  
01/06/95 713-876-6150

Telephone No.

Submit 2 copies to Appropriate District Office.

DISTRICT I  
P.O. Box 1980, Hobbs, NM 88240  
DISTRICT II  
P.O. Drawer DD, Artesia, NM 88210  
DISTRICT III  
1000 Rio Brazos Rd., Aztec, NM 87410

State of New Mexico  
Energy, Minerals and Natural Resources Department

Form C-116  
Revised 1/1/89

OIL CONSERVATION DIVISION

P.O. Box 2088  
Santa Fe, New Mexico 87504-2088

GAS - OIL RATIO TEST

Operator 020153 - Samedan Oil Corporation		Pool 12440 Cline Tubb (Assoc)		County Lea											
Address 12600 Northborough, #250, Houston, Texas 77067		TYPE OF TEST (X)		Completion <input type="checkbox"/> Special <input checked="" type="checkbox"/>											
LEASE NAME	WELL NO.	LOCATION U S T R		DATE OF TEST	TYPE OF TEST (X)	CHOKE SIZE	TBQ. PRESS.	DAILY ALLOW-ABLE	LENGTH OF TEST HOURS	PROD. DURING TEST WATER BBL. GRAV. OIL BBL.		GAS M.C.F.	GAS - OIL RATIO CU. FT./BBL.		
013307 Branex Federal	1	L	12	23S	37E	05/04/94	F	16/64	200	24	30	39.6	5	170	34000
The Cline Tubb (Assoc) zone has been TA since 7/94.															

Instructions:

During gas-oil ratio test, each well shall be produced at a rate not exceeding the top unit allowable for the pool in which well is located by more than 25 percent. Operator is encouraged to take advantage of this 25 percent tolerance in order that well can be assigned increased allowables when authorized by the Division.

Gas volumes must be reported in MCF measured at a pressure base of 15.025 psia and a temperature of 60° F. Specific gravity base will be 0.60.  
Report casing pressure in lieu of tubing pressure for any well producing through casing.

(See Rule 301, Rule 1116 & appropriate pool rules.)

I hereby certify that the above information is true and complete to the best of my knowledge and belief.

Signature Judy Throneberry

Printed name and title  
Judy Throneberry, Div Production Clerk

Date  
01/06/95 713-876-6150

Telephone No.

**Application to Downhole Commingle**  
**Samedan Oil Corporation**  
**Branex Federal #1**  
**Unit letter L, Section 12, T-23-S, R-37-E. Lea County, New Mexico**

5. WELL HISTORY  
See Well Configuration Sketches.

**PROGNOSTICATION OF FUTURE PRODUCTION**

Production decline rates for both zones Tubb and Lower Paddock/Blinebry can be assumed to be similar. Estimated monthly production for 1995 is submitted below based on latest production rates declined 50% annually. These declines were derived from other Samedan operated producing wells in the Cline Pools.

**1995 ESTIMATE PRODUCTION**

	<b>TUBB</b>			<b>LOWER PADDOCK/BLINEBRY</b>		
	<b>OIL</b>	<b>WATER</b>	<b>GAS</b>	<b>OIL</b>	<b>WATER</b>	<b>GAS</b>
Jan	150	150	5100	300	150	6000
Feb	142	150	4814	283	150	5663
Mar	134	150	4543	267	150	5345
Apr	126	150	4289	252	150	5045
May	119	150	4048	238	150	4762
Jun	113	150	3821	225	150	4495
Jul	106	150	3606	212	150	4243
Aug	100	150	3404	200	150	4005
Sep	95	150	3213	189	150	3780
Oct	89	150	3033	178	150	3567
Nov	84	150	2862	168	150	3367
Dec	80	150	2702	159	150	3178

**ESTIMATED COMBINED PRODUCTION**

	<b>OIL</b>	<b>WATER</b>	<b>GAS</b>
Jan	450	30	11100
Feb	425	30	10477
Mar	401	30	9888
Apr	378	30	9334
May	357	30	8810
Jun	338	30	8581
Jul	318	30	7849
Aug	300	30	7409
Sep	284	30	6993
Oct	267	30	6600
Nov	252	30	6229
Dec	239	30	5880

**Application to Downhole Commingle**  
**Samedan Oil Corporation**  
**Branex Federal #1**  
**Unit letter L, Section 12, T-23-S, R-37-E. Lea County, New Mexico**

6. ESTIMATED BHP FOR EACH ARTIFICIALLY LIFTED ZONE

The wellbore will produce from the Tubb and Lower Paddock/Blinebry zones. Both producing zones will be artificially lifted. Measured BHP data for this well is not available. However, based on production rates and the fact that both zones will require artificial lift, it is estimated that each zone will be relatively close to the same BHP. Cross flow will not occur due to the fact that production will be artificially lifted and no differential pressure will exist.

7. FLUID DESCRIPTION OF EACH ZONE

Tubb Zone: Crude Oil, 33.8° API @ 60° F.  
Produced water: SG = 1.055 @ 80°F, TDS - 10106 PPM  
Total hardness = 19810 PPM

Lower Paddock/Blinebry zone: Crude Oil, 40° API @ 60°F.  
Produced water: SG = 1.102 @ 60°F, TDS = 122744 PPM  
Total Hardness = 24545 PPM

Permission to surface commingle production from the Cline Tubb and Cline Lower Paddock/Blinebry Zones has been previously approved by the NMOCD for the Sharp Well #1 in the Cline Pool under order PC-887. No adverse affects have occurred due to surface commingling. It is anticipated that fluid characteristics will not significantly change at the BHP or temperatures and no adverse conditions would be created by down hole commingling.

8. FOR VALUES OF PRODUCTION

Samedan owns and operates 100% of the Branex Federal Lease. We plan to surface commingle the production from the Tubb and Lower Paddock/Blinebry Pools. The commingled gravity at 60° on the offset Sharp lease is 38.7°. No reduction in valve has been realized by downhole commingling the Sharp lease and no reduction is anticipated for the Branex Federal #1.

9. FORMULA FOR ALLOCATION OF PRODUCTION

Production was allocated based on the projected production for the two reservoirs, since no history has been obtained from the Tubb Pool.

	<u>OIL</u>	<u>GAS</u>	<u>WTR</u>
Lower Paddock/Blinebry	66.7%	54.1%	50%
Tubb	33.3%	45.9%	50%

### Configuration After Commingling

Well Name

County, State

2310' FSL and 660' FWL

Section 12, T-23-S, R-37-E

### Location

3281 GL

Elevation

Apr-94

**Perforate the Tubb as follows:**

6102-05 (4 holes), 6108-15 (8 holes), 6132-36 (5 holes), 6141, 6143, 6146-48 (3 holes), 6154-60 (7 holes) 6165-68 (4 holes) Total 33 holes
---

Acidize with 1500 gals 15% NEFE  
HCL and 60 balls at 3000 psi at 4  
BPM. No ball action

Frac down the casing with 28000  
gals Spectra-Frac G-3000 with  
84000# 20/40 Ottawa sand and  
16000# 20/40 CRS sand as follows:

Pump 10000 gallons pad
Pump 3000 gals with 2 ppg
Pump 4000 gals with 4 ppg
Pump 5000 gals with 6 ppg
Pump 4000 gals with 8 ppg
Pump 2000 gals with 8 ppg CRS
Average rate 20 BPM at 2000 psi.

Flow test Tubb zone for one week  
Potential test dated 5-1-94 flowing  
2 BOPD, 23 BWPD and 170 MCFPD  
at 180 psi on a 16/64" choke.

Set plug in top of Lokset packer at 5995'.

May-94

**Perforate the Paddock as follows:**

5601-04 (4 holes), 5606-08 (3 holes), 5612-14 (3 holes), 5617-19 (3 holes)
5622-32 (11 holes), 5640, 5641
Total 26 holes

Acidize with 1500 gallons 15% NEFE  
HCL with 40 balls at 4 BPM and  
2300 psi. No ball action.

Well will produce commingled from the Blinberry and Tubb reservoirs utilizing rod pumping artificial lift.

5 1/2" 15.5# J-55 casing at 6300'. Cemented with 1150 sacks Class C with 16% gel, 5# salt, 1/4# flocele and 0.4% CFR3. Pump 450 sacks Class C Light with 5#/sk salt, 1/4# flocele and 0.4% Halad 9. Tail in with 250 sacks Class H 50/50 Poz with 3#/sk KCL and 0.4% Halad 9. Circ 95 sacks to the pit.

5601 Frac with 22000 gallons 30# Borate  
gel containing 76000# 20/40 Ottawa  
sand and 16000# CRS sand as  
follows:

5641	Pump 8000 gallons gelled pad
	Pump 1000 gals with 2 ppg
	Pump 2000 gals with 4 ppg
	Pump 3000 gals with 6 ppg

5995 Pump 6000 gals with 8 ppg  
Pump 2000 gals with 8 ppg CRS

6102 Average rate 15 BPM at 900 psi.

6168	Well kicked off flowing and potentialed on 5-10-94 flowing 30 BOPD, 110 BWPD and 706 MCFPD.
------	--

Samedan Oil Corporation  
Current Configuration

Branex Federal #1		2310' FSL and 660' FWL	
Well Name		Section 12, T-23-S, R-37-E	
		Location	
Lea, New Mexico		3281 GL	
County, State		Elevation	
		Apr-94	
		Perforate the Tubb as follows:	
13 3/8" 48# H-40 casing at 892'.		6102-05 (4 holes), 6108-15 (8 holes),	
Cemented with 400 sacks Class C		6132-36 (5 holes), 6141, 6143,	
with 4% gel and 2% CaCl2. Tail in		6146-48 (3 holes), 6154-60 (7 holes)	
with 200 sacks Class C with 2%		6165-68 (4 holes) Total 33 holes	
CaCl2. Circ 45 sacks to pit			
		Acidize with 1500 gals 15% NEFE	
		HCL and 60 balls at 3000 psi at 4	
		BPM. No ball action	
		Frac down the casing with 28000	
		gals Spectra-Frac G-3000 with	
Note: 11" hole drilled from surface		84000# 20/40 Ottawa sand and	
casing to 3300'. 7 7/8" hole drilled		16000# 20/40 CRS sand as follows:	
from 3300' to TD.		Pump 10000 gallons pad	
		Pump 3000 gals with 2 ppg	
		Pump 4000 gals with 4 ppg	
		Pump 5000 gals with 6 ppg	
		Pump 4000 gals with 8 ppg	
		Pump 2000 gals with 8 ppg CRS	
		Average rate 20 BPM at 2000 psi.	
		Flow test Tubb zone for one week	
		Potential test dated 5-1-94 flowing	
		2 BOPD, 23 BWPD and 170 MCFPD	
		at 180 psi on a 16/64" choke.	
		Set plug in top of Lokset packer at	
		5995'.	
		May-94	
		Perforate the Paddock as follows:	
		5601-04 (4 holes), 5606-08 (3 holes),	
		5612-14 (3 holes), 5617-19 (3 holes)	
		5622-32 (11 holes), 5640, 5641	
		Total 26 holes	
		Acidize with 1500 gallons 15% NEFE	
		HCL with 40 balls at 4 BPM and	
		2300 psi. No ball action.	
Well flowing up 2 3/8" tubing with		5601 Frac with 22000 gallons 30# Borate	
no packer in the hole.		gel containing 76000# 20/40 Ottawa	
		sand and 16000# CRS sand as	
		follows:	
Baker Lokset at 5995' with 1.50		5641 Pump 8000 gallons gelled pad	
plug in profile in top of the packer.		Pump 1000 gals with 2 ppg	
		Pump 2000 gals with 4 ppg	
		Pump 3000 gals with 6 ppg	
		5995 Pump 6000 gals with 8 ppg	
		Pump 2000 gals with 8 ppg CRS	
		6102 Average rate 15 BPM at 900 psi.	
5 1/2" 15.5# J-55 casing at 6300'.		Well kicked off flowing and	
Cemented with 1150 sacks Class C		potentialed on 5-10-94 flowing	
with 16% gel, 5# salt, 1/4# flocele		30 BOPD, 110 BWPD and 706	
and 0.4% CFR3. Pump 450 sacks		MCFPD.	
Class C Light with 5#/sk salt, 1/4#			
flocele and 0.4% Halad 9. Tail in			
with 250 sacks Class H 50/50 Poz			
with 3#/sk KCL and 0.4% Halad 9.			
Circ 95 sacks to the pit.			

**Samedan Oil Corporation  
Branex Federal #1  
Summary of Production**

<b>Branex Fed #1</b>			
<b>Blinbry</b>			
<b>Month/Yr</b>	<b>BOPM</b>	<b>MCFPM</b>	<b>BWPM</b>
May-94	95	2360	615
Jun-94	526	6146	253
Jul-94	788	12299	296
Aug-94	551	10928	193
Sep-94	426	8758	145
Oct-94	393	7800	166
<b>Totals</b>	<b>2779</b>	<b>48291</b>	<b>1668</b>

OIL CONSERVATION DIVISION  
RECEIVED

'95 JAN 17 AM 8 52

DHC 1089

January 6, 1995

New Mexico Oil Conservation Commission  
PO Box 2088  
Santa Fe, New Mexico 87504

ATTENTION; MR. BILL LEMAY

RE: DOWN HOLE COMMINGLING PERMIT

This is to advise that we have been notified of Samedan Oil Corporation's application to down hole commingle the following described well in accordance with Commission Regulations:

**Unit L, Sec 12, T-23S, R-37E, Lea County, NM**  
**Branex Federal Well #1**  
**Cline Tubb (Assoc)**  
**Cline Lower Paddock/Blinebry**

We,, as an off-set operator, have no objection to the proposed down hole commingling of the Tubb (Assoc) and Lower Paddock/Blinebry zones.

Very truly yours,

KELTON OPERATING COMPANY  
PO BOX 276  
ANDREWS, TEXAS 79714

BY



NAME C. DALE KELTON, PRESIDENT

DATE JANUARY 10, 1995





STATE OF NEW MEXICO  
ENERGY, MINERALS AND NATURAL RESOURCES DEPARTMENT  
OIL CONSERVATION DIVISION  
RECEIVED OIL CONSERVATION DIVISION  
HOBBS DISTRICT OFFICE

'95 JAN 13 AM 8 52 - 12-95

BRUCE KING  
GOVERNOR

POST OFFICE BOX 1980  
HOBBS, NEW MEXICO 88241-1980  
(505) 393-6161

OIL CONSERVATION DIVISION  
P. O. BOX 2088  
SANTA FE, NEW MEXICO 87501

RE: Proposed:

MC \_\_\_\_\_  
DHC X \_\_\_\_\_  
NSL \_\_\_\_\_  
NSP \_\_\_\_\_  
SWD \_\_\_\_\_  
WFX \_\_\_\_\_  
PMX \_\_\_\_\_

DHC-1089

Gentlemen:

I have examined the application for the:

Samedan Oil Corp Branex Fed #1-L 12-23-37  
Operator Lease & Well No. Unit S-T-R

and my recommendations are as follows:

OK

Yours very truly,

Jerry Sexton  
Jerry Sexton  
Supervisor, District 1

/ed