



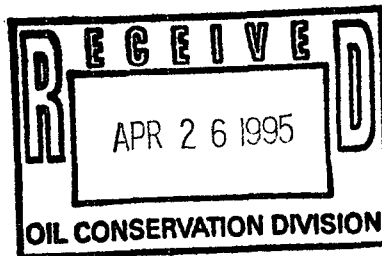
Texaco E & P

PO Box 730  
Hobbs NM 88241-0730  
505 393 7191

5-15-95

April 24, 1995

New Mexico Oil Conservation Division  
2040 South Pacheco  
P.O. Box 6429  
Santa Fe, New Mexico 87505



Attention: Mr. David R. Catanach

Re: Exception to NMOCD Rule 303 (A), Order No. R-10033 :  
Addition of Six Wells to Previous Division Order  
Jalmat and Langlie Mattix Pools  
Cooper Jal Unit  
Well Numbers 408, 410, 411, 412, 413, and 415  
T-24-S, R-36 & 37-E  
Lea County, New Mexico

Gentlemen:

Texaco Exploration and Production Inc. respectfully requests administrative approval to add the six above captioned wells to the previous Division Order for downhole commingling of production from the Jalmat and Langlie Mattix Pools in the Cooper Jal Unit. The six said wells are located within the unit boundaries of the Cooper Jal Unit, Lea County, New Mexico. All of the said wells are proposed to be drilled to the base of the Langlie Mattix Pool and simultaneously completed in the Langlie Mattix and Jalmat Pools as downhole commingled producers.

During 1993, the New Mexico Oil Conservation Division approved a Texaco E & P Inc. proposal for certification of Enhanced Oil Recovery on the Cooper Jal Unit. In this proposal Texaco indicated that, to complete the enhanced oil recovery project, future locations would need to be drilled as downhole commingled wells. The six subject wells presented in this application are part of that project. Within the Cooper Jal Unit, the Jalmat and Langlie Mattix Pools have been concurrently waterflooded since October 1970. All produced fluids have entered a common production and injection facility since that time with no fluid compatibility problems.

The proposed downhole commingling will provide a more economical means of production. It will allow complete development of the productive capacity within the unit by allowing the two intervals to be waterflooded on concurrent 40-acre five spot patterns. This will extend the productive life of both intervals, thereby preventing waste. It is therefore requested by Texaco Exploration and Production Inc., to administratively downhole commingle the Jalmat and Langlie Mattix Pools within the said six wellbores. The commingling of additional wells in the Cooper Jal Unit was provided for in Division Order R-5590. Texaco requests that this action be performed by adding the six wells to the previously signed downhole commingling order, No. R-10033, dated December 10, 1993.

The subject wells meet all requirements set forth by Rule 303 (C) except Rule 303 (C) 1. a. (1), where the total volumes of water produced are above the set state wide limits. This issue was addressed and resolved during a NMOCD Hearing, Case No. 10879, on December 2, 1993. The ownership of both

zones are common (including working and royalty interests). The Jalmat and Langlie Mattix pools have been successfully commingled within the Cooper Jal Unit area with no incompatibility of reservoir fluids.

The following information is submitted as support for this request :

1. Location plat (Form C-102)
2. Well Data Sheets
3. Computation of Value for commingled production
4. Individual Well Casing Programs (Form C-101)
5. Average Production plots for the five 1994 infield producers.
6. Statement of notification to offset operators and USGS.

It is requested that the allocation of production for each zone be deferred until each well is placed on production. At such time, it is proposed to isolate the Jalmat interval in each well, to determine its productive rate prior to commingling. Production will then be allocated to the Langlie Mattix by subtracting the Jalmat production rate from the total stabilized production rate after downhole commingling the well.

Texaco Exploration and Production, Inc. believes that the administrative approval for downhole commingling and use of artificial lift on said wells will improve secondary recovery efforts and prolong the productive life of both zones, therefore preventing waste. If you have any questions concerning this application, please contact Darrell Carriger at (505) 397-0426.

Yours very truly,



Darrell J. Carriger  
Engineer Assistant

attachments  
Chrono

cc: Jerry Sexton/NMOCD/Hobbs, Offset Operators

# **ATTACHMENTS**

**LOCATION PLATS**  
**(Form C-102)**

DISTRICT I  
P. O. Box 1980, Hobbs, NM 88240

DISTRICT II  
P. O. Drawer DD, Artesia, NM 88210

DISTRICT III  
1000 Rio Brazos Rd., Aztec, NM 87410

DISTRICT IV  
P. O. Box 2088, Santa Fe, NM 87504-2088

State of New Mexico  
Energy, Minerals and Natural Resources Department

Form C-102  
Revised February 10, 1994

Instructions on back

Submit to Appropriate District Office

State Lease-4 copies  
Fee Lease-3 copies

☐ AMENDED REPORT

OIL CONSERVATION DIVISION

PO Box 2088  
Santa Fe, NM 87504-2088

NOTICE OF LOCATION

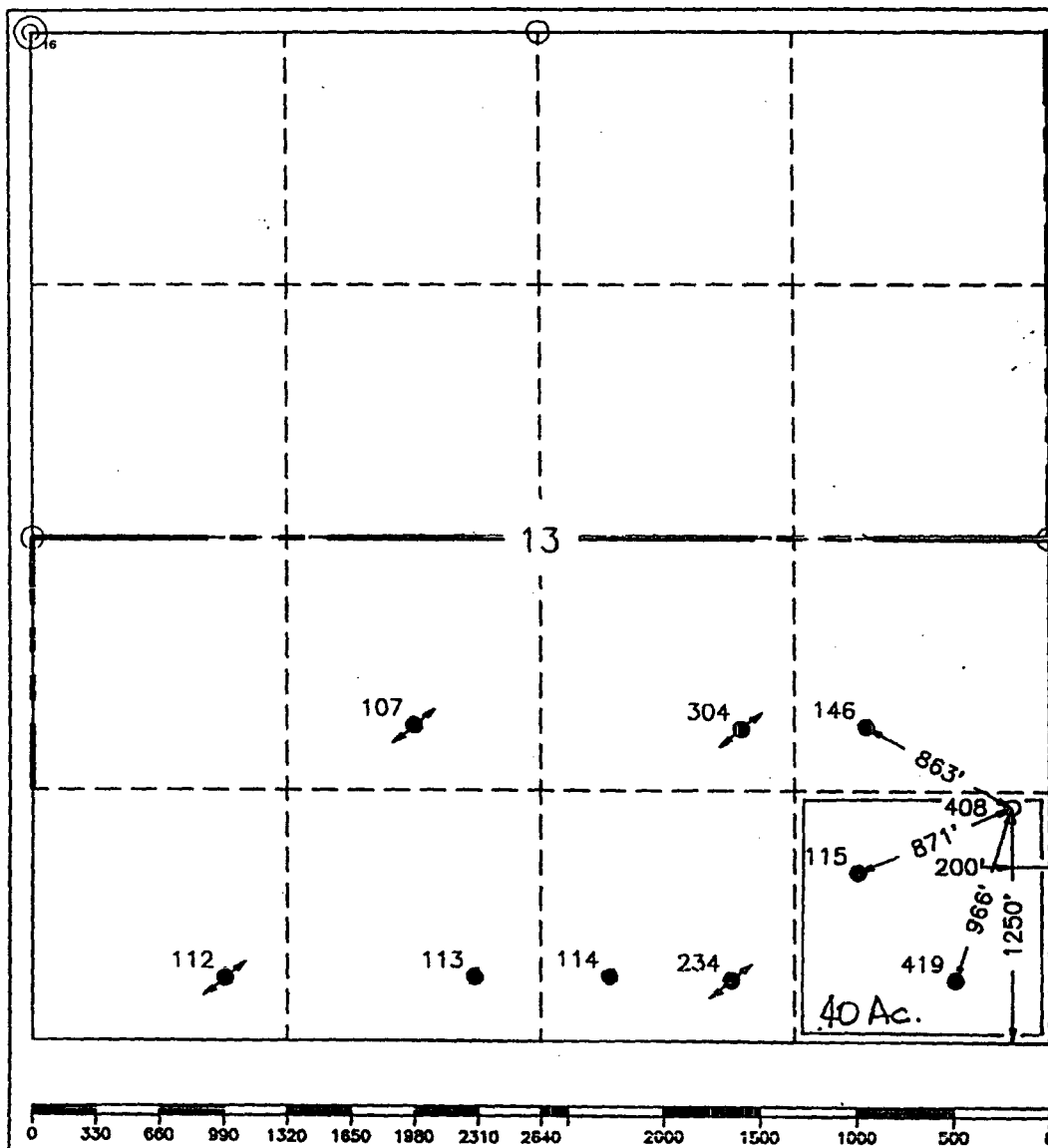
WELL LOCATION AND ACREAGE DEDICATION PLAT

|                          |  |  |  |                                       |                      |
|--------------------------|--|--|--|---------------------------------------|----------------------|
| 1 API Number             |  | 2 Pool Code<br>37240 ; 33820                             |  | 3 Pool Name<br>Jalmat; Langlie Mattix |                      |
| 4 Property Code<br>10917 |  | 5 Property Name<br>COOPER JAL UNIT                       |  |                                       | 6 Well Number<br>408 |
| 7 UCRID No.<br>22351     |  | 8 Operator Name<br>TEXACO EXPLORATION & PRODUCTION, INC. |  |                                       | 9 Elevation<br>3316  |

|                     |         |          |       |         |               |                  |               |                |        |
|---------------------|---------|----------|-------|---------|---------------|------------------|---------------|----------------|--------|
| 10 Surface Location |         |          |       |         |               |                  |               |                |        |
| 11 or 12 no.        | Section | Township | Range | 1st 4th | Feet from the | North/South line | Feet from the | East/West line | County |
| P                   | 13      | 24-S     | 36-E  |         | 1250'         | South            | 200'          | East           | Lea    |

|   |         |                    |       |                       |               |                  |               |                |        |
|---|---------|--------------------|-------|-----------------------|---------------|------------------|---------------|----------------|--------|
| 11 Bottom Hole Location If Different From Surface |         |                    |       |                       |               |                  |               |                |        |
| 11 or 12 no.                                      | Section | Township           | Range | 1st 4th               | Feet from the | North/South line | Feet from the | East/West line | County |
|   |         |                    |       |                       |               |                  |               |                |        |
| 13 Dedicated Acres<br>40                          |         | 14 Joint or Infill |       | 15 Consolidation Code |               | 16 Order No.     |               |                |        |

NO ALLOWABLE WILL BE ASSIGNED TO THIS COMPLETION UNTIL ALL INTERESTS HAVE BEEN CONSOLIDATED  
OR A NON-STANDARD UNIT HAS BEEN APPROVED BY THE DIVISION.



DISTRICT I  
P. O. Box 1980, Hobbs, NM 88240

DISTRICT II  
P. O. Drawer DD, Artesia, NM 88210

DISTRICT III  
1000 Rio Brazos Rd., Aztec, NM 87410

DISTRICT IV  
P. O. Box 2088, Santa Fe, NM 87504-2088

State of New Mexico  
Energy, Minerals and Natural Resources Department

Form C-102  
Revised February 10, 1991

Instructions on back

Submit to Appropriate District Office

State Lease-4 copies  
Fee Lease-3 copies

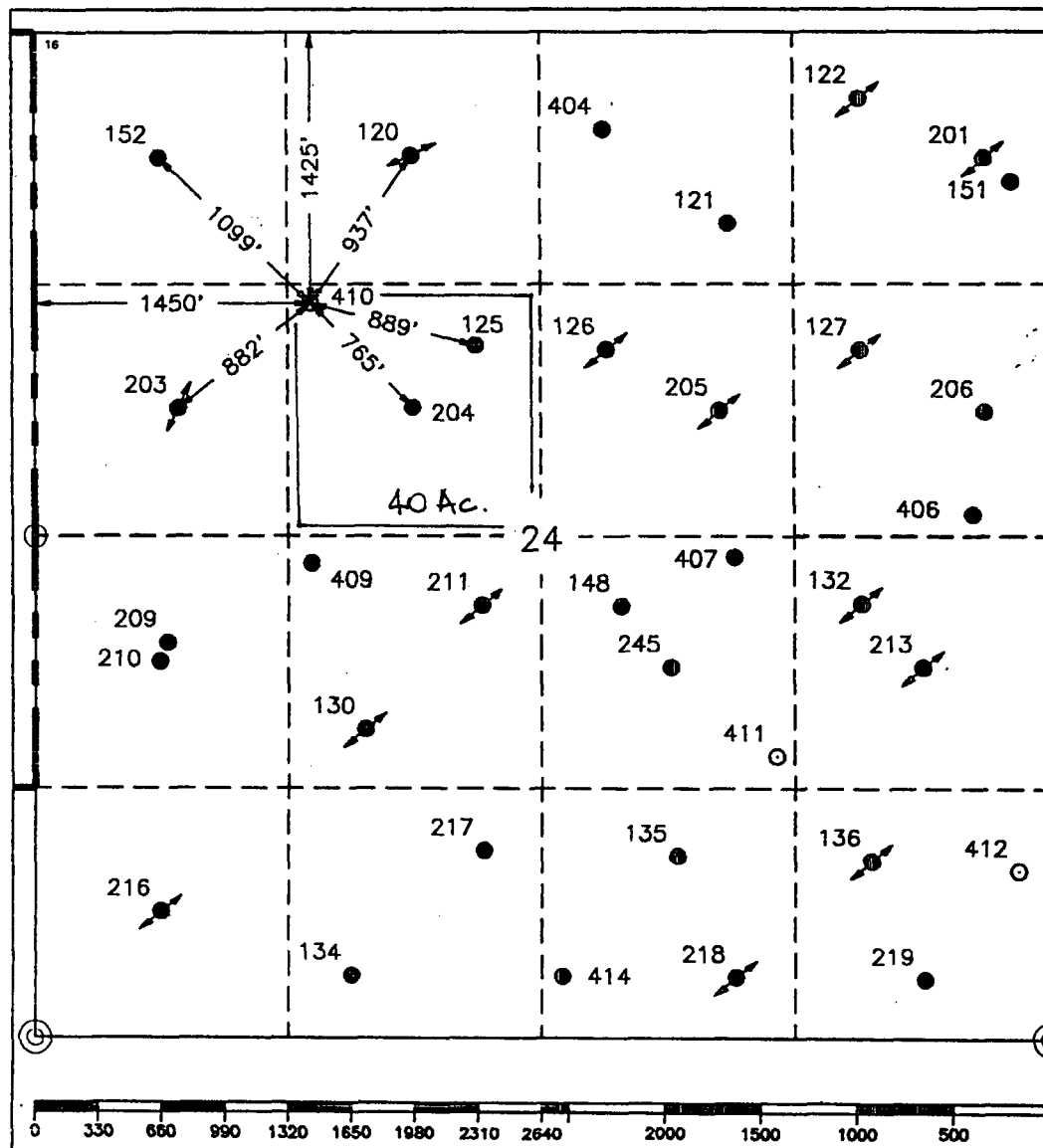
☐ AMENDED REPORT

NOTICE OF LOCATION  
OIL CONSERVATION DIVISION  
PO Box 2088  
Santa Fe, NM 87504-2088

WELL LOCATION AND ACREAGE DEDICATION PLAT

|  |         |                                       |       |                                  |                          |                         |               |                |                     |
|--|---------|---------------------------------------|-------|----------------------------------|--------------------------|-------------------------|---------------|----------------|---------------------|
| <sup>1</sup> API Number                                      |         | <sup>2</sup> Pool Code                |       | <sup>3</sup> Pool Name           |                          |                         |               |                |                     |
| 37240 ; 33820  |         | Jalmit; Langlie Mattix                |       |                                  |                          |                         |               |                |                     |
| <sup>4</sup> Property Code                                   |         | <sup>5</sup> Property Name            |       |                                  | <sup>6</sup> Well Number |                         |               |                |                     |
| 10917  |         | COOPER JAL UNIT                       |       |                                  | 410                      |                         |               |                |                     |
| <sup>7</sup> OGRID No.                                       |         | <sup>8</sup> Operator Name            |       |                                  | <sup>9</sup> Elevation   |                         |               |                |                     |
| 22351  |         | TEXACO EXPLORATION & PRODUCTION, INC. |       |                                  | 3324                     |                         |               |                |                     |
| <sup>10</sup> Surface Location                               |         |                                       |       |                                  |                          |                         |               |                |                     |
| UL or lot no.  | Section | Township                              | Range | Lot Idn                          | Feet from the            | North/South line        | Feet from the | East/West line | <sup>7</sup> County |
| F  | 24      | 24-S                                  | 36-E  |                                  | 1425'                    | North                   | 1450'         | West           | Lea                 |
| <sup>11</sup> Bottom Hole Location If Different From Surface |         |                                       |       |                                  |                          |                         |               |                |                     |
| UL or lot no.  | Section | Township                              | Range | Lot Idn                          | Feet from the            | North/South line        | Feet from the | East/West line | <sup>7</sup> County |
|  |         |                                       |       |                                  |                          |                         |               |                |                     |
| <sup>12</sup> Dedicated Acres                                |         | <sup>13</sup> Joint or Infill         |       | <sup>14</sup> Consolidation Code |                          | <sup>15</sup> Order No. |               |                |                     |
| 40   |         |                                       |       |                                  |                          |                         |               |                |                     |

NO ALLOWABLE WILL BE ASSIGNED TO THIS COMPLETION UNTIL ALL INTERESTS HAVE BEEN CONSOLIDATED  
OR A NON-STANDARD UNIT HAS BEEN APPROVED BY THE DIVISION.



<sup>16</sup> OPERATOR CERTIFICATION

I hereby certify that the information contained herein is true and complete to the best of my knowledge and belief.

Signature

*C. Wade Howard*

Printed Name

C. Wade Howard

Position

Engineer Technician

Company

Texaco Expl. & Prod. Inc.

Date

January 30, 1995

<sup>17</sup> SURVEYOR CERTIFICATION

I hereby certify that the well location shown on this plat was plotted from field notes of actual surveys made by me or under my supervision, and that the same is true and correct to the best of my knowledge and belief.

Date Surveyed

January 29, 1995

Signature & Seal of Professional Surveyor

Certificate No.

7254 John S. Piper

Sheet

○ = Staked Location ● = Producing Well ↗ = Injection Well ↖ = Water Supply Well ✖ = Plugged & Abandon Well  
⊙ = Found Section Corner, 2 or 3" Iron Pipe & GLO B.C. ○ = Found 1/4 Section Corner, 1" Iron Pipe & GLO B.C.

DISTRICT I  
P. O. Box 1980, Hobbs, NM 88240

DISTRICT II  
P. O. Drawer DD, Artesia, NM 88210

DISTRICT III  
1000 Rio Brazos Rd., Aztec, NM 87410

DISTRICT IV  
P. O. Box 2088, Santa Fe, NM 87504-2088

**NOTICE OF LOCATION**  
State of New Mexico  
Energy, Minerals and Natural Resources Department

**OIL CONSERVATION DIVISION**  
PO Box 2088  
Santa Fe, NM 87504-2088

Form C-102  
Revised February 10, 1994

Instructions on back

Submit to Appropriate District Office

State Lease-4 copies  
Fee Lease-3 copies

☐ AMENDED REPORT

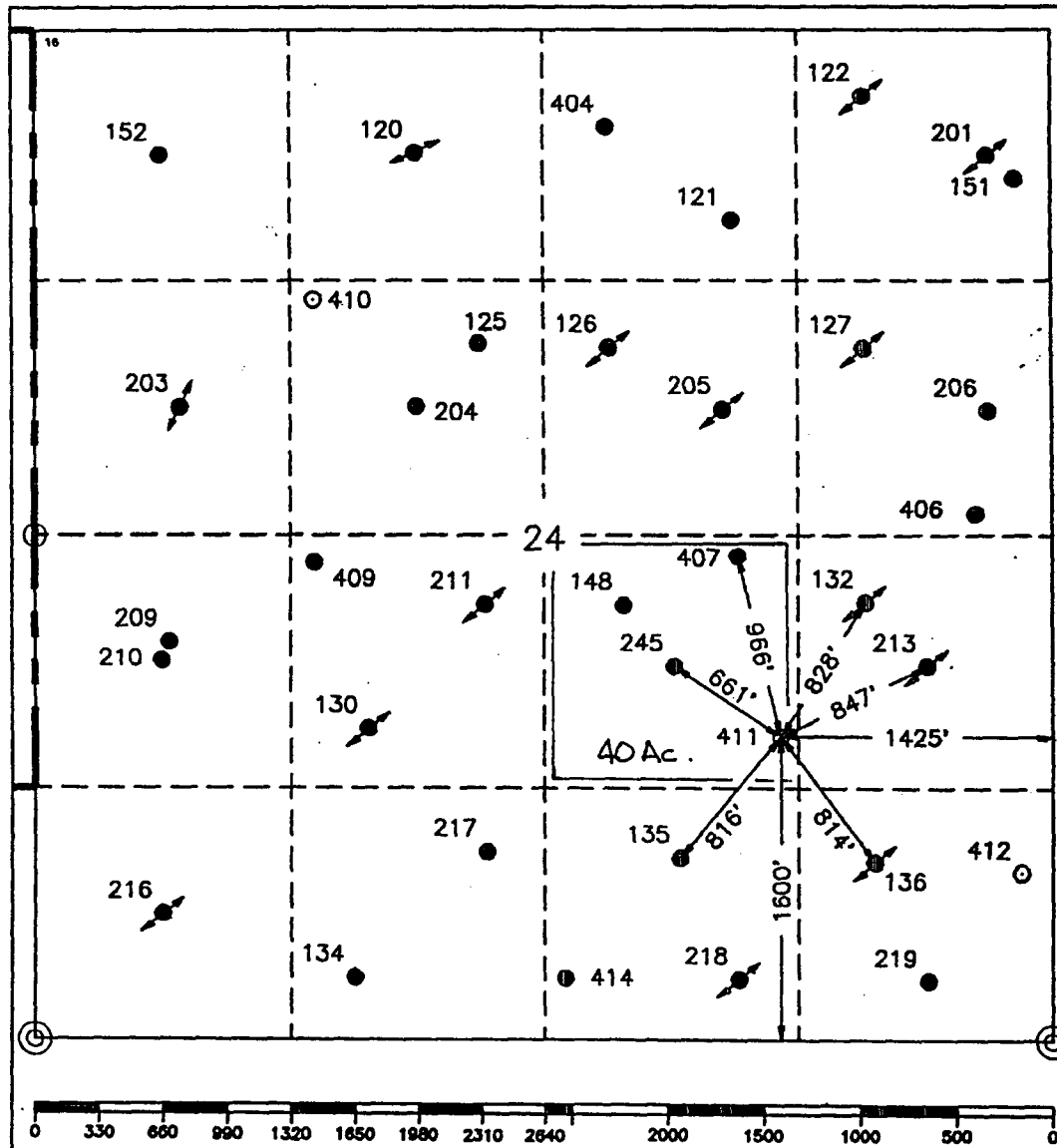
**WELL LOCATION AND ACREAGE DEDICATION PLAT**

|                                     |  |   |  |  |  |                                 |  |
|-------------------------------------|--|---|--|--|--|---------------------------------|--|
| <sup>1</sup> API Number             |  | <sup>2</sup> Pool Code<br>37240 ; 33820                             |  | <sup>3</sup> Pool Name<br>Jalmit; Langlie Mattix |  |                                 |  |
| <sup>4</sup> Property Code<br>10917 |  | <sup>5</sup> Property Name<br>COOPER JAL UNIT                       |  |  |  | <sup>6</sup> Well Number<br>411 |  |
| <sup>7</sup> GRID No.<br>22351      |  | <sup>8</sup> Operator Name<br>TEXACO EXPLORATION & PRODUCTION, INC. |  |  |  | <sup>9</sup> Elevation<br>3314  |  |

| <sup>10</sup> Surface Location |               |                  |               |         |                        |                           |                        |                        |                            |
|--------------------------------|---------------|------------------|---------------|---------|------------------------|---------------------------|------------------------|------------------------|----------------------------|
| UL or lot no.<br>J             | Section<br>24 | Township<br>24-S | Range<br>36-E | Lot Idn | Feet from the<br>1600' | North/South line<br>South | Feet from the<br>1425' | East/West line<br>East | <sup>7</sup> County<br>Lea |

| <sup>11</sup> Bottom Hole Location If Different From Surface |         |                               |       |                                  |               |                         |               |                |                     |
|--|---------|-------------------------------|-------|----------------------------------|---------------|-------------------------|---------------|----------------|---------------------|
| UL or lot no.  | Section | Township                      | Range | Lot Idn                          | Feet from the | North/South line        | Feet from the | East/West line | <sup>7</sup> County |
| <sup>12</sup> Dedicated Acres<br>40                          |         | <sup>13</sup> Joint or infill |       | <sup>14</sup> Consolidation Code |               | <sup>15</sup> Order No. |               |                |                     |

NO ALLOWABLE WILL BE ASSIGNED TO THIS COMPLETION UNTIL ALL INTERESTS HAVE BEEN CONSOLIDATED  
OR A NON-STANDARD UNIT HAS BEEN APPROVED BY THE DIVISION.



**<sup>16</sup> OPERATOR CERTIFICATION**

I hereby certify that the information contained herein is true and complete to the best of my knowledge and belief.

Signature

Printed Name

C. Wade Howard

Position

Engineer Technician

Company

Texaco Expl. & Prod. Inc.

Date

January 30, 1995

**<sup>17</sup> SURVEYOR CERTIFICATION**

I hereby certify that the well location shown on this plat was plotted from field notes of actual surveys made by me or under my supervision, and that the same is true and correct to the best of my knowledge and belief.

Date Surveyed

January 19, 1995

Signature & Seal of Professional Surveyor

Certificate No.

7254 John S. Piper

Sheet

○ = Staked Location ● = Producing Well ↗ = Injection Well ◇ = Water Supply Well ✕ = Plugged & Abandon Well  
⊙ = Found Section Corner, 2 or 3" Iron Pipe & GLO B.C. ○ = Found 1/4 Section Corner, 1" Iron Pipe & GLO B.C.

DISTRICT I  
P. O. Box 1980, Hobbs, NM 88240

DISTRICT II  
P. O. Drawer DD, Artesia, NM 88210

DISTRICT III  
1000 Rio Brazos Rd., Aztec, NM 87410

DISTRICT IV  
P. O. Box 2088, Santa Fe, NM 87504-2088

State of New Mexico  
Energy, Minerals and Natural Resources Department

Form C-102  
Revised February 10, 1997

Instructions on back

Submit to Appropriate District Office

State Lease-4 copies

Fee Lease-3 copies

☐ AMENDED REPORT

NOTICE OF LOCATION

OIL CONSERVATION DIVISION

PO Box 2088  
Santa Fe, NM 87504-2088

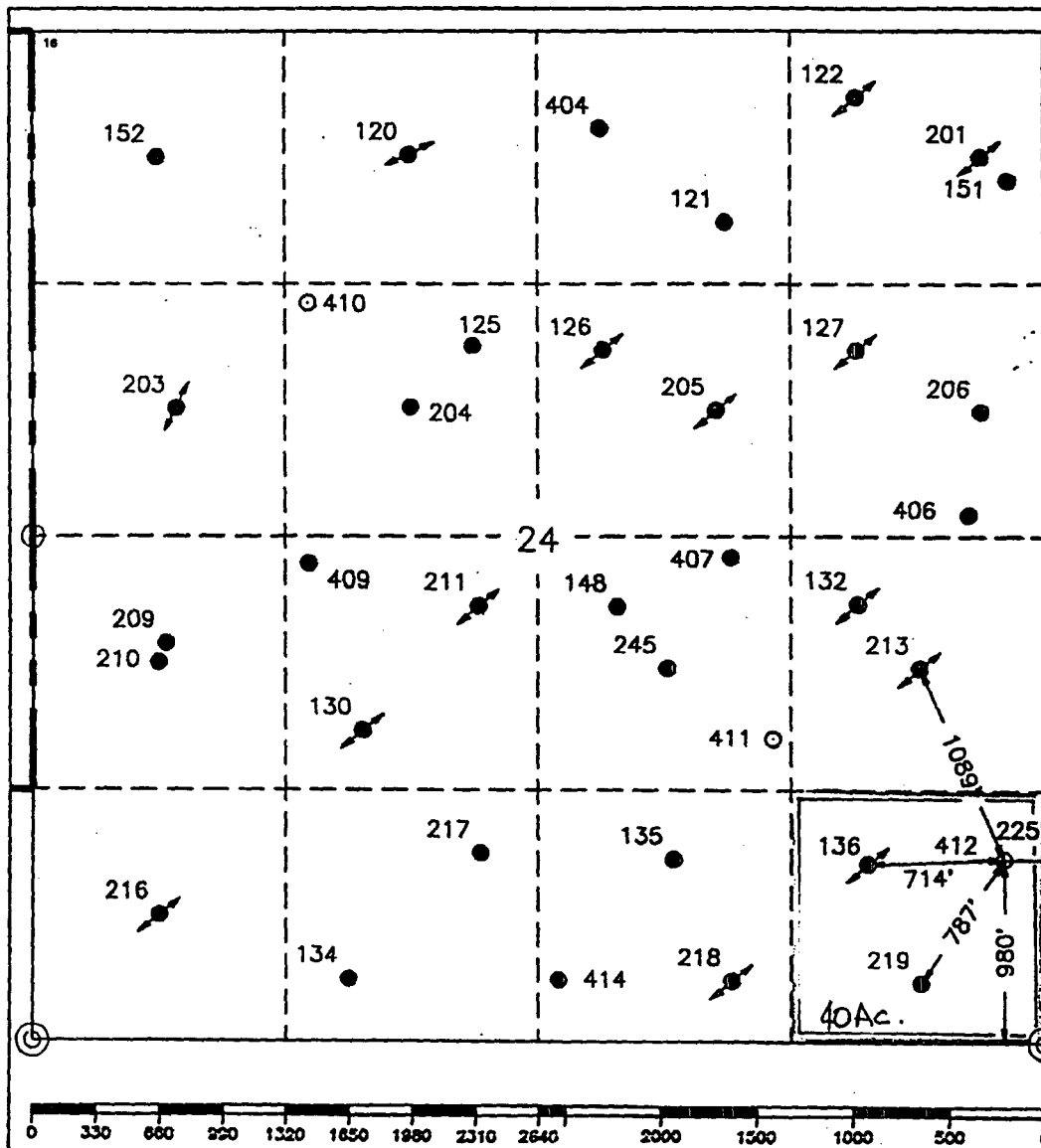
WELL LOCATION AND ACREAGE DEDICATION PLAT

|                 |  |                                       |  |                        |  |
|-----------------|--|---------------------------------------|--|------------------------|--|
| 1 API Number    |  | 2 Pool Code                           |  | 3 Pool Name            |  |
|                 |  | 37240; 33820                          |  | Jalmat; Langlie Mattix |  |
| 4 Property Code |  | 5 Property Name                       |  |                        |  |
| 10917           |  | COOPER JAL UNIT                       |  |                        |  |
| 6 Well Number   |  | 412                                   |  |                        |  |
| 7 OGRID No.     |  | 8 Operator Name                       |  |                        |  |
| 22351           |  | TEXACO EXPLORATION & PRODUCTION, INC. |  |                        |  |
| 9 Elevation     |  | 3295                                  |  |                        |  |

|                     |         |          |       |         |               |                  |               |                |        |
|---------------------|---------|----------|-------|---------|---------------|------------------|---------------|----------------|--------|
| 10 Surface Location |         |          |       |         |               |                  |               |                |        |
| UL or lot no.       | Section | Township | Range | Lot Idn | Feet from the | North/South line | Feet from the | East/West line | County |
| P                   | 24      | 24-S     | 36-E  |         | 980'          | South            | 225'          | East           | Lea    |

|   |         |                    |       |                       |               |                  |               |                |        |
|---|---------|--------------------|-------|-----------------------|---------------|------------------|---------------|----------------|--------|
| 11 Bottom Hole Location If Different From Surface |         |                    |       |                       |               |                  |               |                |        |
| UL or lot no.                                     | Section | Township           | Range | Lot Idn               | Feet from the | North/South line | Feet from the | East/West line | County |
|   |         |                    |       |                       |               |                  |               |                |        |
| 12 Dedicated Acres                                |         | 13 Joint or Infill |       | 14 Consolidation Code |               | 15 Order No.     |               |                |        |
| 40  |         |                    |       |                       |               |                  |               |                |        |

NO ALLOWABLE WILL BE ASSIGNED TO THIS COMPLETION UNTIL ALL INTERESTS HAVE BEEN CONSOLIDATED  
OR A NON-STANDARD UNIT HAS BEEN APPROVED BY THE DIVISION.



16 OPERATOR CERTIFICATION

I hereby certify that the information contained herein is true and complete to the best of my knowledge and belief.

Signature

*C. Wade Howard*

Printed Name

C. Wade Howard

Position

Engineer Technician

Company

Texaco Expl. & Prod. Inc.

Date

January 30, 1995

17 SURVEYOR CERTIFICATION

I hereby certify that the well location shown on this plat was plotted from field notes of actual surveys made by me or under my supervision and that the same is true and correct to the best of my knowledge and belief.

Date Surveyed

January 19, 1995

Signature & Seal of Professional Surveyor

Certificate No.

7254 John S. Piper

Sheet 8 of 8

DISTRICT I  
P. O. Box 1980, Hobbs, NM 88240

DISTRICT II  
P. O. Drawer 00, Artesia, NM 88210

DISTRICT III  
1000 Rio Brazos Rd., Aztec, NM 87410

DISTRICT IV  
P. O. Box 2088, Santa Fe, NM 87504-2088

OFFICE OF LOCATION

State of New Mexico  
Energy, Minerals and Natural Resources Department

Form C-1C  
Revised February 10, 1991

Instructions on back

Submit to Appropriate District Office

State Lease-4 copies

Fee Lease-3 copies

# OIL CONSERVATION DIVISION

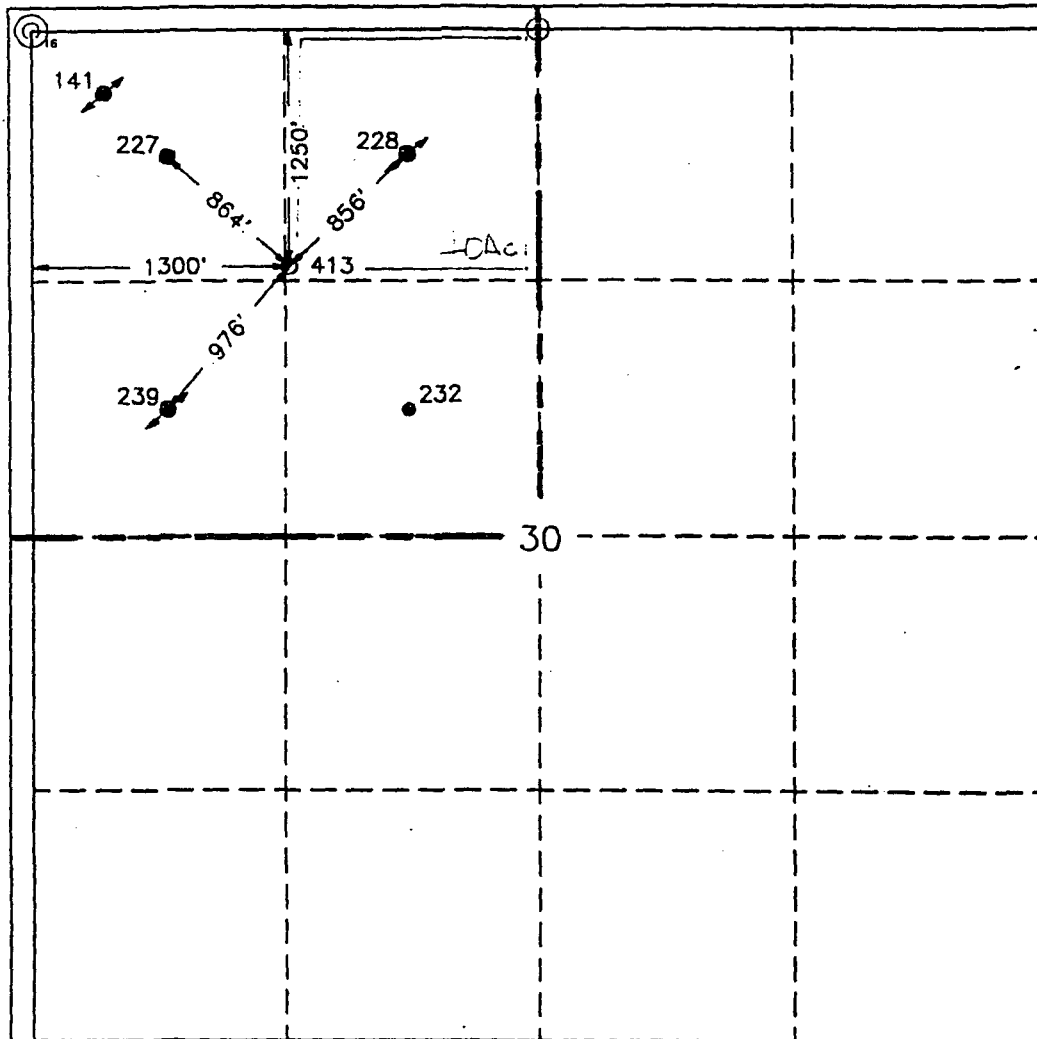
PO Box 2088  
Santa Fe, NM 87504-2088

☐ AMENDED REPORT

## WELL LOCATION AND ACREAGE DEDICATION PLAT

|  |                       |                                       |                     |                                  |                             |                                |                             |                              |                      |
|--|-----------------------|---------------------------------------|---------------------|----------------------------------|-----------------------------|--------------------------------|-----------------------------|------------------------------|----------------------|
| <sup>1</sup> API Number                                      |                       | <sup>2</sup> Pool Code                |                     | <sup>3</sup> Pool Name           |                             |                                |                             |                              |                      |
|  |                       | 37240 ; 33820                         |                     | Jalmit; Langlie Mattix           |                             |                                |                             |                              |                      |
| <sup>4</sup> Property Code                                   |                       | <sup>5</sup> Property Name            |                     |                                  |                             | <sup>6</sup> Well Number       |                             |                              |                      |
| 10917  |                       | COOPER JAL UNIT                       |                     |                                  |                             | 413                            |                             |                              |                      |
| <sup>7</sup> OGRID No.                                       |                       | <sup>8</sup> Operator Name            |                     |                                  |                             | <sup>9</sup> Elevation         |                             |                              |                      |
| 22351  |                       | TEXACO EXPLORATION & PRODUCTION, INC. |                     |                                  |                             | 3267                           |                             |                              |                      |
| <sup>10</sup> Surface Location                               |                       |                                       |                     |                                  |                             |                                |                             |                              |                      |
| <sup>11</sup> UL or lot no.                                  | <sup>12</sup> Section | <sup>13</sup> Township                | <sup>14</sup> Range | <sup>15</sup> Lot Idn            | <sup>16</sup> Feet from the | <sup>17</sup> North/South line | <sup>18</sup> Feet from the | <sup>19</sup> East/West line | <sup>20</sup> County |
| C  | 30                    | 24-S                                  | 37-E                |                                  | 1250'                       | North                          | 1300'                       | West                         | Lea                  |
| <sup>21</sup> Bottom Hole Location If Different From Surface |                       |                                       |                     |                                  |                             |                                |                             |                              |                      |
| <sup>22</sup> UL or lot no.                                  | <sup>23</sup> Section | <sup>24</sup> Township                | <sup>25</sup> Range | <sup>26</sup> Lot Idn            | <sup>27</sup> Feet from the | <sup>28</sup> North/South line | <sup>29</sup> Feet from the | <sup>30</sup> East/West line | <sup>31</sup> County |
|  |                       |                                       |                     |                                  |                             |                                |                             |                              |                      |
| <sup>32</sup> Dedicated Acres                                |                       | <sup>33</sup> Joint or Infill         |                     | <sup>34</sup> Consolidation Code |                             | <sup>35</sup> Order No.        |                             |                              |                      |
| 40   |                       |                                       |                     |                                  |                             |                                |                             |                              |                      |

NO ALLOWABLE WILL BE ASSIGNED TO THIS COMPLETION UNTIL ALL INTERESTS HAVE BEEN CONSOLIDATED  
OR A NON-STANDARD UNIT HAS BEEN APPROVED BY THE DIVISION.



### <sup>10</sup> OPERATOR CERTIFICATION

I hereby certify that the information contained herein is true and complete to the best of my knowledge and belief.

Signature

C. Wade Howard

Printed Name

C. Wade Howard

Position

Engineer Technician

Company

Texaco Expl. & Prod. Inc.

Date

January 30, 1995

### <sup>10</sup> SURVEYOR CERTIFICATION

I hereby certify that the well location shown on this plat was plotted from field notes of actual surveys made by me or under my supervision, and that the same is true and correct to the best of my knowledge and belief.

Date Surveyed

January 19, 1995

Signature & Seal of  
Professional Surveyor

Certificate No.

7254 John S. Piper

Sheet Sheet 8 of 8

○ = Staked Location ● = Producing Well ↗ = Injection Well ◇ = Water Supply Well ✖ = Plugged & Abandon Well  
⊙ = Found Section Corner, 2 or 3" Iron Pipe & GLO B.C. ○ = Found 1/4 Section Corner 1" Iron Pipe & GLO B.C.

DISTRICT I  
P. O. Box 1980, Hobbs, NM 88240

DISTRICT II  
P. O. Drawer DD, Artesia, NM 88210

DISTRICT III  
1000 Rio Brazos Rd., Aztec, NM 87410

DISTRICT IV  
P. O. Box 2088, Santa Fe, NM 87504-2088

State of New Mexico  
Energy, Minerals and Natural Resources Department

OIL CONSERVATION DIVISION

PO Box 2088  
Santa Fe, NM 87504-2088

Form C-102  
Revised February 10, 1994

Instructions on back

Submit to Appropriate District Office

State Lease-4 copies

Fee Lease-3 copies

☐ AMENDED REPORT

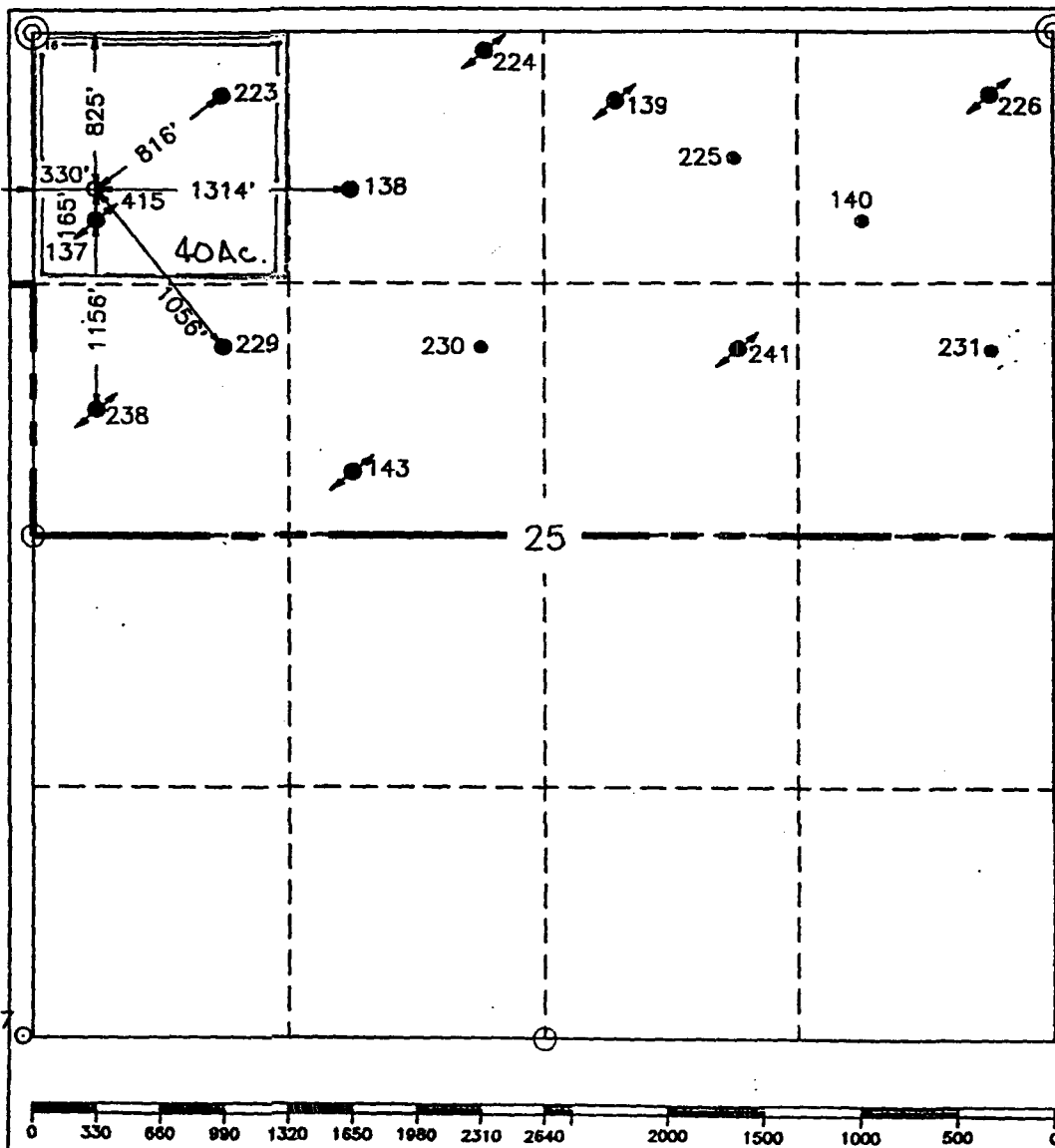
WELL LOCATION AND ACREAGE DEDICATION PLAT

|   |  |   |  |  |                                 |
|---|--|---|--|--|---------------------------------|
| <sup>1</sup> API Number<br>38-025-32855 |  | <sup>2</sup> Pool Code<br>37240 ; 33820                             |  | <sup>3</sup> Pool Name<br>Jalmat; Langlie Mattix |                                 |
| <sup>4</sup> Property Code<br>10917     |  | <sup>5</sup> Property Name<br>COOPER JAL UNIT                       |  |  | <sup>6</sup> Well Number<br>415 |
| <sup>7</sup> OGRID No.<br>22351         |  | <sup>8</sup> Operator Name<br>TEXACO EXPLORATION & PRODUCTION, INC. |  |  | <sup>9</sup> Elevation<br>3307  |

| <sup>10</sup> Surface Location |               |                  |               |         |                       |                           |                       |                        |                            |
|--------------------------------|---------------|------------------|---------------|---------|-----------------------|---------------------------|-----------------------|------------------------|----------------------------|
| UL or lot no.<br>D             | Section<br>25 | Township<br>24-S | Range<br>36-E | Lot Idn | Feet from the<br>825' | North/South line<br>North | Feet from the<br>330' | East/West line<br>West | <sup>7</sup> County<br>Lea |

| <sup>11</sup> Bottom Hole Location If Different From Surface |         |                               |       |                                  |               |                         |               |                |                     |
|--|---------|-------------------------------|-------|----------------------------------|---------------|-------------------------|---------------|----------------|---------------------|
| UL or lot no.  | Section | Township                      | Range | Lot Idn                          | Feet from the | North/South line        | Feet from the | East/West line | <sup>7</sup> County |
| <sup>12</sup> Dedicated Acres<br>40                          |         | <sup>13</sup> Joint or Infill |       | <sup>14</sup> Consolidation Code |               | <sup>15</sup> Order No. |               |                |                     |

NO ALLOWABLE WILL BE ASSIGNED TO THIS COMPLETION UNTIL ALL INTERESTS HAVE BEEN CONSOLIDATED  
OR A NON-STANDARD UNIT HAS BEEN APPROVED BY THE DIVISION.



<sup>16</sup> OPERATOR CERTIFICATION

I hereby certify that the information contained herein is true and complete to the best of my knowledge and belief.

Signature

*C. Wade Howard*

Printed Name

C. Wade Howard

Position

Engineer Technician

Company

Texaco Expl. & Prod. Inc.

Date

January 30, 1995

<sup>17</sup> SURVEYOR CERTIFICATION

I hereby certify that the well location shown on this plat is true and correct from field notes of actual surveys made by me or under my supervision and that the same is true and correct to the best of my knowledge and belief.

FEB 1994

Received

January 30, 1995

Signature & Seal of Professional Surveyor

*John S. Piper*

Certificate No.

7254 John S. Piper

Sheet

○ = Staked Location ● = Producing Well ⊕ = Injection Well ⊕ = Water Supply Well ⊕ = Plugged & Abandon Well

⊙ = Found Section Corner, 2 or 3" Iron Pipe & GLO B.C. ○ = Found 1/4 Section Corner

# **INDIVIDUAL WELL DATA SHEETS**

### DATA SHEET FOR DOWNHOLE COMMINGLING

Operator : Texaco USA, Inc.  
Address : P.O. Box 730 , Hobbs, New Mexico 88240  
Lease and Well No.: **Cooper Jal Unit No. 408**  
Proposed Location : Unit Letter P, 1250' FSL, 200' FEL of  
Section 13, T-24-S, R-36-E  
Lea County, New Mexico

#### WELL DATA

|                        | <u>Upper Pool</u>                        | <u>Lower Pool</u>                      |
|------------------------|--|--|
| Name of Pool           | Jalmat Oil & Gas                         | Langlie Mattix Oil                     |
| BHP                    | 312 psia<br>(Pres from # 208 PBU)        | 540 psia<br>(Est. from #403 SI-FL)     |
| Completed Interval:    | 3000'-3250' (250')<br>(Proposed Comp.)   | 3400'-3650' (250')<br>(Proposed Comp.) |
| Proposed Prod. Method: | Rod Pumped                               | Rod Pumped                             |
| Current Test Date :    | - NA -                                   | - NA -                                 |
| Oil                    | - NA -                                   | - NA -                                 |
| Gas                    | - NA -                                   | - NA -                                 |
| Water                  | - NA -                                   | - NA -                                 |
| GOR                    | - NA -                                   | - NA -                                 |
| GOR Limit              | - NA -                                   | - NA -                                 |
| Gas Gravity            | 0.8467                                   | 0.8467                                 |
|                        | (Both Commingled at Common Unit Battery) |  |

NOTE : It is proposed to drill to Langlie Mattix, cement casing, perforate and fracture stimulate each zone independently, test the Jalmat Zone, obtain a stabilized production test, then commingle both zones and allocate production at that time.

### DATA SHEET FOR DOWNHOLE COMMINGLING

Operator : Texaco USA, Inc.  
Address : P.O. Box 730 , Hobbs, New Mexico 88240  
Lease and Well No.: Cooper Jal Unit No. 410  
Proposed Location : Unit Letter F, 1425' FNL, 1450' FWL of  
Section 24, T-24-S, R-36-E  
Lea County, New Mexico

### WELL DATA

|                        | <u>Upper Pool</u>                                  | <u>Lower Pool</u>                      |
|------------------------|--|--|
| Name of Pool           | Jalmat Oil & Gas                                   | Langlie Mattix Oil                     |
| BHP                    | 360 psia<br>(Est. from #148 SI-FL)                 | 425 psia<br>(Est. from #402 SI-FL)     |
| Completed Interval:    | 3000'-3250'(250')<br>(Proposed Comp.)              | 3400'-3650' (250')<br>(Proposed Comp.) |
| Proposed Prod. Method: | Rod Pumped   | Rod Pumped                             |
| Current Test Date :    | - NA -   | - NA -                                 |
| Oil                    | - NA -   | - NA -                                 |
| Gas                    | - NA -   | - NA -                                 |
| Water                  | - NA -   | - NA -                                 |
| GOR                    | - NA -   | - NA -                                 |
| GOR Limit              | - NA -   | - NA -                                 |
| Gas Gravity            | 0.8467<br>(Both Commingled at Common Unit Battery) | 0.8467                                 |

NOTE : It is proposed to drill to Langlie Mattix, cement casing, perforate and fracture stimulate each zone independently, test the Jalmat Zone, obtain a stabilized production test, then commingle both zones and allocate production at that time.

### DATA SHEET FOR DOWNHOLE COMMINGLING

Operator : Texaco USA, Inc.  
Address : P.O. Box 730 , Hobbs, New Mexico 88240  
Lease and Well No.: Cooper Jal Unit No. 411  
Proposed Location : Unit Letter J, 1600' FSL, 1425' FEL of  
Section 24, T-24-S, R-36-E  
Lea County, New Mexico

### WELL DATA

|                        | <u>Upper Pool</u>                                  | <u>Lower Pool</u>                      |
|------------------------|--|--|
| Name of Pool           | Jalmat Oil & Gas                                   | Langlie Mattix Oil                     |
| BHP                    | 520 psia<br>(Est. from #130 SI-FL)                 | 425 psia<br>(Est. from #402 SI-FL)     |
| Completed Interval:    | 3000'-3250'(250')<br>(Proposed Comp.)              | 3400'-3650' (250')<br>(Proposed Comp.) |
| Proposed Prod. Method: | Rod Pumped   | Rod Pumped                             |
| Current Test Date :    | - NA -   | - NA -                                 |
| Oil                    | - NA -   | - NA -                                 |
| Gas                    | - NA -   | - NA -                                 |
| Water                  | - NA -   | - NA -                                 |
| GOR                    | - NA -   | - NA -                                 |
| GOR Limit              | - NA -   | - NA -                                 |
| Gas Gravity            | 0.8467<br>(Both Commingled at Common Unit Battery) | 0.8467                                 |

NOTE : It is proposed to drill to Langlie Mattix, cement casing, perforate and fracture stimulate each zone independently, test the Jalmat Zone, obtain a stabilized production test, then commingle both zones and allocate production at that time.

### DATA SHEET FOR DOWNHOLE COMMINGLING

Operator : Texaco USA, Inc.  
Address : P.O. Box 730 , Hobbs, New Mexico 88240  
Lease and Well No.: **Cooper Jal Unit No. 412**  
Proposed Location : Unit Letter P, 980' FSL, 225' FEL of  
Section 24, T-24-S, R-36-E  
Lea County, New Mexico

### WELL DATA

|                        | <u>Upper Pool</u>                                  | <u>Lower Pool</u>                      |
|------------------------|--|--|
| Name of Pool           | Jalmat Oil & Gas                                   | Langlie Mattix Oil                     |
| BHP                    | 786 psia<br>(Pres from # 230 PBU)                  | 339 psia<br>(Pres from #154 PBU)       |
| Completed Interval:    | 3000'-3250'(250')<br>(Proposed Comp.)              | 3400'-3650' (250')<br>(Proposed Comp.) |
| Proposed Prod. Method: | Rod Pumped   | Rod Pumped                             |
| Current Test Date :    | - NA -   | - NA -                                 |
| Oil                    | - NA -   | - NA -                                 |
| Gas                    | - NA -   | - NA -                                 |
| Water                  | - NA -   | - NA -                                 |
| GOR                    | - NA -   | - NA -                                 |
| GOR Limit              | - NA -   | - NA -                                 |
| Gas Gravity            | 0.8467<br>(Both Commingled at Common Unit Battery) | 0.8467                                 |

NOTE : It is proposed to drill to Langlie Mattix, cement casing, perforate and fracture stimulate each zone independently, test the Jalmat Zone, obtain a stabilized production test, then commingle both zones and allocate production at that time.

### DATA SHEET FOR DOWNHOLE COMMINGLING

Operator : Texaco USA, Inc.  
Address : P.O. Box 730 , Hobbs, New Mexico 88240  
Lease and Well No.: **Cooper Jal Unit No. 413**  
Proposed Location : Unit Letter C, 1250' FNL, 1300' FWL of  
Section 30, T-24-S, R-37-E  
Lea County, New Mexico

### WELL DATA

|                        | <u>Upper Pool</u>                                  | <u>Lower Pool</u>                      |
|------------------------|--|--|
| Name of Pool           | Jalmat Oil & Gas                                   | Langlie Mattix Oil                     |
| BHP                    | 312 psia<br>(Pres from #208 PBU)                   | 540 psia<br>(Est. from #403 SI-FL)     |
| Completed Interval:    | 3000'-3250'(250')<br>(Proposed Comp.)              | 3400'-3650' (250')<br>(Proposed Comp.) |
| Proposed Prod. Method: | Rod Pumped   | Rod Pumped                             |
| Current Test Date :    | - NA -   | - NA -                                 |
| Oil                    | - NA -   | - NA -                                 |
| Gas                    | - NA -   | - NA -                                 |
| Water                  | - NA -   | - NA -                                 |
| GOR                    | - NA -   | - NA -                                 |
| GOR Limit              | - NA -   | - NA -                                 |
| Gas Gravity            | 0.8467<br>(Both Commingled at Common Unit Battery) | 0.8467                                 |

NOTE : It is proposed to drill to Langlie Mattix, cement casing, perforate and fracture stimulate each zone independently, test the Jalmat Zone, obtain a stabilized production test, then commingle both zones and allocate production at that time.

**DATA SHEET FOR DOWNHOLE COMMINGLING**

Operator : Texaco USA, Inc.  
Address : P.O. Box 730 , Hobbs, New Mexico 88240  
Lease and Well No.: **Cooper Jal Unit No. 415**  
Proposed Location : Unit Letter D, 825' FNL, 330' FWL of  
Section 25, T-24-S, R-36-E  
Lea County, New Mexico

**WELL DATA**

|                        | <u>Upper Pool</u>                                  | <u>Lower Pool</u>                      |
|------------------------|--|--|
| Name of Pool           | Jalmat Oil & Gas                                   | Langlie Mattix Oil                     |
| BHP                    | 312 psia<br>(Pres from #208 PBU)                   | 339 psia<br>(Pres. from 154 PBU)       |
| Completed Interval:    | 3000'-3250'(250')<br>(Proposed Comp.)              | 3400'-3650' (250')<br>(Proposed Comp.) |
| Proposed Prod. Method: | Rod Pumped   | Rod Pumped                             |
| Current Test Date :    | - NA -   | - NA -                                 |
| Oil                    | - NA -   | - NA -                                 |
| Gas                    | - NA -   | - NA -                                 |
| Water                  | - NA -   | - NA -                                 |
| GOR                    | - NA -   | - NA -                                 |
| GOR Limit              | - NA -   | - NA -                                 |
| Gas Gravity            | 0.8467<br>(Both Commingled at Common Unit Battery) | 0.8467                                 |

**NOTE :** It is proposed to drill to Langlie Mattix, cement casing, perforate and fracture stimulate each zone independently, test the Jalmat Zone, obtain a stabilized production test, then commingle both zones and allocate production at that time.

**COMPUTED VALUE OF DHC**  
**PRODUCTION**

**AVERAGE ESTIMATED PRODUCTION BEFORE DHC**  
**(DETERMINED FROM NORMALIZED 1994 NEW WELL PRODUCTION)**

|   | <u>JALMAT</u> | <u>AVERAGE PRICE</u> | <u>INCOME</u>   |
|---|---------------|----------------------|-----------------|
| Oil                                     | 40 BOPD       | \$14.44/BO           | \$577.60        |
| Gas                                     | 25 MCFPD      | \$ 2.04/MCF          | \$ 51.00        |
| <b>TOTAL SINGLE COMPLETION REVENUES</b> |               |                      | <b>\$629.00</b> |

**AVERAGE ESTIMATED PRODUCTION AFTER DHC**  
**(DETERMINED FROM NORMALIZED 1994 NEW WELL PRODUCTION)**

|       | <u>JALMAT</u> | <u>LANGLIE MATTIX</u> | <u>COMMINGLED</u> |
|-------|---------------|-----------------------|-------------------|
| Oil   | 40 BOPD       | 6 BOPD                | <b>46 BOPD</b>    |
| Gas   | 25 MCFPD      | 12 MCFPD              | <b>37 MCFPD</b>   |
| Water | 200 BWPD      | 95 BWPD               | <b>295 BWPD</b>   |

**ESTIMATE OF VALUE OF DHC PRODUCED HYDROCARBONS**

|                                       | <u>COMMINGLED</u> | <u>PRODUCT PRICE</u> | <u>REVENUE</u>  |
|---------------------------------------|-------------------|----------------------|-----------------|
| Oil                                   | 46 BOPD           | \$14.44/BBL          | \$ 664.00       |
| Gas                                   | 37 MCFPD          | \$2.04/MCF           | <u>\$ 75.00</u> |
| <b>TOTAL ESTIMATED DAILY REVENUES</b> |                   |                      | <b>\$740.00</b> |

**NET DIFFERENCE FROM DOWNHOLE COMMINGLING = \$ 111/DAY/WELL**

NOTE : All produced volumes are currently commingled at the surface from both the Langlie Mattix and Jalmat Pools. Both pools oil gravities are 38 degree API Crudes and are classified as sour.

## **FORMULA FOR DETERMINING ALLOCATION OF PRODUCTION**

### **OIL**

J = JALMAT STABILIZED OIL PRODUCTION RATE, BOPD  
T = TOTAL COMMINGLED OIL PRODUCTION RATE, BOPD

LANGLIE MATTIX PROD. =  $M = (T - J)$ , BOPD

### **GAS**

J = JALMAT STABILIZED GAS PRODUCTION RATE, MCFPD  
T = TOTAL COMMINGLED GAS PRODUCTION RATE, MCFPD

LANGLIE MATTIX PROD. =  $M = (T - J)$ , MCFPD

**CASING PROGRAMS**  
**(C-101s)**

8119

P.O. Box 1980, Hobbs, NM 88241-1980

**DISTRICT II**

P.O. Box Drawer DD, Artesia, NM 88211-0719

**DISTRICT III**

1000 Rio Brazos Rd., Aztec, NM 87410

**DISTRICT IV**

P.O. Box 2088, Santa Fe, NM 87504-2088

State of New Mexico  
Energy, Minerals and Natural Resources Department

**OIL CONSERVATION DIVISION**

P.O. Box 2088  
Santa Fe, New Mexico 87504-2088

Form C-1

Revised February 10, 1995

Instructions on back

Submit to Appropriate District Office

State Lease - 6 Copies

Fee Lease - 5 Copies

☐ AMENDED REPORT

**APPLICATION FOR PERMIT TO DRILL, RE-ENTER, DEEPEN, PLUGBACK, OR ADD A ZONE**

|  |   |  |
|--|---|--|
| <sup>1</sup> Operator Name and Address<br>TEXACO EXPLORATION & PRODUCTION INC.<br>P.O. Box 3109, Midland Texas 79702 |   | <sup>2</sup> OGRID Number<br>022351    |
| <sup>4</sup> Property Code<br>10917  | <sup>5</sup> Property Name<br>COOPER JAL UNIT | <sup>3</sup> API Number<br>30-025-3285 |
|  |   | <sup>6</sup> Well No.<br>410           |

**7 Surface Location**

| UI or lot no. | Section | Township | Range | Lot.Idn | Feet From The | North/South Line | Feet From The | East/West Line | County |
|---------------|---------|----------|-------|---------|---------------|------------------|---------------|----------------|--------|
| F             | 24      | 24-S     | 36-E  |         | 1425          | NORTH            | 1450          | WEST           | LEA    |

**8 Proposed Bottom Hole Location If Different From Surface**

| UI or lot no. | Section | Township | Range | Lot.Idn | Feet From The | North/South Line | Feet From The | East/West Line | County |
|---------------|---------|----------|-------|---------|---------------|------------------|---------------|----------------|--------|
|               |         |          |       |         |               |                  |               |                |        |

<sup>9</sup> Proposed Pool 1  
JALMAT - 37240-3382D

<sup>10</sup> Proposed Pool 2  
LANGUE MATTIX - 33820-3724D

|                                   |                                       |   |                                    |   |
|-----------------------------------|---------------------------------------|---|------------------------------------|---|
| <sup>11</sup> Work Type Code<br>N | <sup>12</sup> Well Type Code<br>O     | <sup>13</sup> Rotary or C.T.<br>ROTARY      | <sup>14</sup> Lease Type Code<br>P | <sup>15</sup> Ground Level Elevation<br>3324' |
| <sup>16</sup> Multiple<br>No      | <sup>17</sup> Proposed Depth<br>3800' | <sup>18</sup> Formation<br>TNSL-YTS-TRV-QUN | <sup>19</sup> Contractor           | <sup>20</sup> Spud Date<br>4/1/95             |

**21 Proposed Casing and Cement Program**

| SIZE OF HOLE | SIZE OF CASING | WEIGHT PER FOOT | SETTING DEPTH | SACKS OF CEMENT | EST. TOP |
|--------------|----------------|-----------------|---------------|-----------------|----------|
| 12 1/4       | 8 5/8          | 24#             | 400'          | 250 SACKS       | SURFACE  |
| 7 7/8        | 5 1/2          | 15.5#           | 3800'         | 850 SACKS       | SURFACE  |
|              |                |                 |               |                 |          |
|              |                |                 |               |                 |          |
|              |                |                 |               |                 |          |

22 Describe the proposed program. If this application is to DEEPEN or PLUG BACK give the data on the present productive zone and proposed new productive zone. Describe the blowout prevention program, if any. Use additional sheets if necessary.

**CEMENTING PROGRAM:**

SURFACE CASING - 250 SACKS CLASS C w/ 2% CACL<sub>2</sub> (14.8 PPG, 1.34 CF/S, 6.31 GW/S).

PRODUCTION CASING - 500 SACKS 35/65 POZ H w/ 6% GEL, 5% SALT, 1/4# FLOCELE (12.8 PPG, 1.94 CF/S, 10.4 GW/S). F/B 350 SACKS CLASS H (15.6 PPG, 1.18 CF/S, 5.2 GW/S).

THERE ARE NO OTHER OPERATORS IN THIS QUARTER QUARTER SECTION.

REQUEST TO DOWN-HOLE COMMINGLE THE JALMAT AND LANGUE MATTIX WILL BE FILED.

UNORTHODOX LOCATION: EXCEPTION HAS BEEN APPLIED FOR. (SEE ATTACHED LETTER.)

|  |  |   |  |
|--|--|---|--|
| <sup>23</sup> I hereby certify that the rules and regulations of the Oil Conservation Division have been complied with and that the information given above is true and complete to the best of my knowledge and belief. |  | <b>OIL CONSERVATION DIVISION</b>                          |  |
| Signature <i>C. Wade Howard</i>  |  | Approved By: <b>JERRY SEXTON</b>                          |  |
| Printed Name C. Wade Howard  |  | DISTRICT I SUPERVISOR                                     |  |
| Title Eng. Assistant   |  | Title: <b>Received</b>                                    |  |
| Date 2/10/95   |  | Approval Date <b>FEB 15 1995</b>                          |  |
| Telephone 688-4606   |  | Conditions of Approval: Attached <input type="checkbox"/> |  |

DISTRICT I  
P.O. Box 1980, Hobbs, NM 88241-1980  
DISTRICT II  
P.O. Box Drawer DD, Artesia, NM 88211-0719  
DISTRICT III  
1000 Rio Brazos Rd., Aztec, NM 87410  
DISTRICT IV  
P.O. Box 2088, Santa Fe, NM 87504-2088

State of New Mexico  
Energy, Minerals and Natural Resources Department

Revised February 10, 19

Instructions on be  
Submit to Appropriate District Off  
State Lease - 6 Copi  
Fee Lease - 5 Copi

## OIL CONSERVATION DIVISION

P.O. Box 2088  
Santa Fe, New Mexico 87504-2088

☐ AMENDED REPORT

### APPLICATION FOR PERMIT TO DRILL, RE-ENTER, DEEPEN, PLUGBACK, OR ADD A ZONE

|  |   |  |
|--|---|--|
| <sup>1</sup> Operator Name and Address<br>TEXACO EXPLORATION & PRODUCTION INC.<br>P.O. Box 3109, Midland Texas 79702 |   | <sup>2</sup> OGRID Number<br>022351                                    |
| <sup>4</sup> Property Code<br>10917  | <sup>5</sup> Property Name<br>COOPER JAL UNIT | <sup>3</sup> API Number<br>3D-D25-3285<br><sup>6</sup> Well No.<br>411 |

### <sup>7</sup> Surface Location

| UI or lot no. | Section | Township | Range | Lot Idn | Feet From The | North/South Line | Feet From The | East/West Line | County |
|---------------|---------|----------|-------|---------|---------------|------------------|---------------|----------------|--------|
| J             | 24      | 24-S     | 36-E  |         | 1600          | SOUTH            | 1425          | EAST           | LEA    |

### <sup>8</sup> Proposed Bottom Hole Location If Different From Surface

| UI or lot no. | Section | Township | Range | Lot Idn | Feet From The | North/South Line | Feet From The | East/West Line | County |
|---------------|---------|----------|-------|---------|---------------|------------------|---------------|----------------|--------|
|               |         |          |       |         |               |                  |               |                |        |

|  |   |
|--|---|
| <sup>9</sup> Proposed Pool 1<br>JALMAT - 37240 3382D | <sup>10</sup> Proposed Pool 2<br>LANGLIE MATTIX - 33820 3724D |
|--|---|

|                                   |                                       |   |                                    |   |
|-----------------------------------|---------------------------------------|---|------------------------------------|---|
| <sup>11</sup> Work Type Code<br>N | <sup>12</sup> Well Type Code<br>O     | <sup>13</sup> Rotary or C.T.<br>ROTARY      | <sup>14</sup> Lease Type Code<br>P | <sup>15</sup> Ground Level Elevation<br>3314' |
| <sup>16</sup> Multiple<br>No      | <sup>17</sup> Proposed Depth<br>3800' | <sup>18</sup> Formation<br>TNSL-YTS-TRV-QUN | <sup>19</sup> Contractor           | <sup>20</sup> Spud Date<br>4/1/95             |

### <sup>21</sup> Proposed Casing and Cement Program

| SIZE OF HOLE | SIZE OF CASING | WEIGHT PER FOOT | SETTING DEPTH | SACKS OF CEMENT | EST. TOP |
|--------------|----------------|-----------------|---------------|-----------------|----------|
| 12 1/4       | 8 5/8          | 24#             | 400'          | 250 SACKS       | SURFACE  |
| 7 7/8        | 5 1/2          | 15.5#           | 3800'         | 850 SACKS       | SURFACE  |
|              |                |                 |               |                 |          |
|              |                |                 |               |                 |          |
|              |                |                 |               |                 |          |

<sup>22</sup> Describe the proposed program. If this application is to DEEPEN or PLUG BACK give the data on the present productive zone and proposed new productive zone. Describe the blowout prevention program, if any. Use additional sheets if necessary.

#### CEMENTING PROGRAM:

SURFACE CASING - 250 SACKS CLASS C w/ 2% CACL<sub>2</sub> (14.8 PPG, 1.34 CF/S, 6.31 GW/S).

PRODUCTION CASING - 500 SACKS 35/65 POZ H w/ 6% GEL, 5% SALT, 1/4# FLOCELE (12.8 PPG, 1.94 CF/S, 10.4 GW/S). F/B 350 SACKS CLASS I (15.6 PPG, 1.18 CF/S, 5.2 GW/S).

THERE ARE NO OTHER OPERATORS IN THIS QUARTER QUARTER SECTION.

REQUEST TO DOWN-HOLE COMMINGLE THE JALMAT AND LANGLIE MATTIX WILL BE FILED.

UNORTHODOX LOCATION: EXCEPTION HAS BEEN APPLIED FOR. (SEE ATTACHED LETTER.)

NSL-3480

|  |                                |   |  |
|--|--------------------------------|---|--|
| <sup>23</sup> I hereby certify that the rules and regulations of the Oil Conservation Division have been complied with and that the information given above is true and complete to the best of my knowledge and belief. |                                | <b>OIL CONSERVATION DIVISION</b>  |  |
| Signature<br><i>C. Wade Howard</i>   | Printed Name<br>C. Wade Howard | Approved By<br>ORIGINAL SIGNED BY JERRY SEITON<br>DISTRICT I SUPERVISOR<br>MAR 1995 | Title:<br>Approval Date: FEB 15 1995<br>Conditions of Approval:<br>Attached <input type="checkbox"/> |
| Date<br>2/10/95  | Telephone<br>688-4606          | Received<br>Exp. Date<br>Hobbs Area   |  |

Form 3100-3  
(December 1990)

SUBMIT IN TRIPLICATE

UNIT  
DEPARTMENT  
BUREAU OF

OPER. OGRID NO. 2235 COMMISSION  
PROPERTY NO. 10917  
POOL CODE 37240  
EFF. DATE 3/20/95  
API NO. 30-025-32892

FORM APPROVED  
Budget Bureau No. 1004-0138  
Expires: December 31, 1991

### APPLICATION FOR PERMIT TO DRILL OR DEEPEN

1a. Type of Work DRILL ☒ DEEPEN ☐

1b. Type of Well

OIL WELL ☒ GAS WELL ☐ OTHER

SINGLE ZONE ☐

MULTIPLE ZONE ☒

2. Name of Operator

TEXACO EXPLORATION & PRODUCTION INC.

3. Address and Telephone No.

P.O. Box 3100, Midland Texas 79702

688-4606

4. Location of Well (Report location clearly and in accordance with any State requirements.)

At Surface UNORTHODOX LOCATION:

Unit Letter P : 980 Feet From The SOUTH Line and 225 Feet From The EAST Line  
At proposed prod. zone

SAME

14. Distance in Miles and Direction from Nearest Town or Post Office\*

7 MILES NW OF JAL, NM

15. Distance From Proposed\* Location to Nearest Property or Lease Line, PL (also to nearest drig. unit line, if any)

278'

16. No. of Acres in Lease

2581

18. Distance From Proposed Location\* to Nearest Well, Drilling, Completed or Applied For, On This Lease, PL

714'

19. Proposed Depth

3800'

5. Lease Designation and Serial No.

LC 063065

6. If Indian, Alottee or Tribe Name

7. If Unit or CA, Agreement Designation

8. Well Name and Number

COOPER JAL UNIT

412

9. API Well No.

10. Field and Pool, Exploratory Area

JALMAT/LANGLIE MATTX

11. SEC., T., R., M., or BLK. and Survey or Area

Sec. 24, Township 24-S, Range 36-E

12. County or Parish

LEA

13. State

NM

17. No. of Acres Assigned To This Well

40

20. Rotary or Cable Tools

ROTARY

21. Elevations (Show whether DF, RT, GR, etc.)

GR-3295'

Capitan Controlled Water Basin

22. Approx. Date Work Will Start\*

4/1/95

23.

### PROPOSED CASING AND CEMENT PROGRAM

| SIZE OF HOLE | GRADE, SIZE OF CASING | WEIGHT PER FOOT | SETTING DEPTH | QUANTITY OF CEMENT    |
|--------------|-----------------------|-----------------|---------------|-----------------------|
| 12 1/4       | WC50, 8 5/8           | 24#             | 400'          | 250 SACKS - CIRCULATE |
| 7 7/8        | WC-50, 5 1/2          | 15.80           | 3800'         | 850 SACKS - CIRCULATE |

### CEMENTING PROGRAM:

SURFACE CASING - 250 SACKS CLASS C w/ 2% CACL2 (14.8 PPG, 1.34 CF/S, 6.31 GW/S).

PRODUCTION CASING - 500 SACKS 35/65 POZ H w/ 6% GEL, 5% SALT, 1/4# FLOCELE (12.8 PPG, 1.94 CF/S, 10.4 GW/S), RB 350 SACKS CLASS H (15.6 PPG, 1.18 CF/S, 5.2 GW/S).

THERE ARE NO OTHER OPERATORS IN THIS QUARTER QUARTER SECTION.

REQUEST TO DOWN-HOLE COMMINGLE THE JALMAT AND LANGLIE MATTX WILL BE FILED.

UNORTHODOX LOCATION: EXCEPTION HAS BEEN APPLIED FOR. (SEE ATTACHED LETTER.)

Approval Subject to  
General Requirements and  
Special Stipulations  
Attached

In Above Space Describe Proposed Program: If proposal is to deepen, give data on present productive zone and proposed new productive zone. If proposal is to drill or deepen directionally, give pertinent data on subsurface locations and measured true vertical depths. Give blowout preventer program, if any.

24. I hereby certify that the foregoing is true and correct

SIGNATURE

C. Wade Howard

TITLE Eng. Assistant

DATE

2/7/95

TYPE OR PRINT NAME

C. Wade Howard

(This space for Federal or State office use)

PERMIT NO.

APPROVAL DATE

Application approval does not warrant or certify that the applicant holds legal or equitable title to those rights in the subject lease which would entitle the applicant to conduct operations thereon.

APPROVED BY Timothy P. O'Brien

TITLE Acting AREA MANAGER

DATE 3-13-95

CONDITIONS OF APPROVAL, IF ANY:

Title 18 U.S.C. Section 1001, makes it a crime for any person knowingly and willfully to make to any department or agency of the United States any false, fictitious or fraudulent statements or representations as to any matter within its jurisdiction.

Form 3180-3  
(December 1990)UNITED STATES  
DEPARTMENT OF THE INTERIOR  
BUREAU OF LAND MANAGEMENT

SUBMIT IN TRIPLICATE

FORM APPROVED  
Budget Bureau No. 1004-0136  
Expires: December 31, 1991

## APPLICATION FOR PERMIT TO DRILL OR DEEPEN

|  |  |   |  |   |  |
|--|--|---|--|---|--|
| 1a. Type of Work<br>DRILL <input checked="" type="checkbox"/> DEEPEN <input type="checkbox"/>  |  | 1b. Type of Well<br>OIL WELL <input checked="" type="checkbox"/> GAS WELL <input type="checkbox"/> OTHER <input type="checkbox"/> |  | SINGLE ZONE <input type="checkbox"/><br>MULTIPLE ZONE <input checked="" type="checkbox"/> |  |
| 2. Name of Operator<br>TEXACO EXPLORATION & PRODUCTION INC.  |  |   |  |   |  |
| 3. Address and Telephone No.<br>P.O. Box 3109, Midland Texas 79702 688-4806  |  |   |  |   |  |
| 4. Location of Well (Report location clearly and in accordance with any State requirements.)<br>At Surface<br>Unit Letter C : 1250 Feet From The NORTH Line and 1300 Feet From The WEST Line<br>At proposed prod. zone<br>SAME |  |   |  |   |  |
| 14. Distance in Miles and Direction from Nearest Town or Post Office<br>3 MILES NW OF JAL, NM  |  |   |  |   |  |
| 15. Distance From Proposed* Location to Nearest Property or Lease Line, Ft. (also to nearest drg. unit line, if any)   |  |   |  | 16. No. of Acres in Lease   |  |
| 1260'  |  |   |  | 2261  |  |
| 18. Distance From Proposed Location* to Nearest Well, Drilling, Completed or Applied For, On This Lease, Ft.   |  |   |  | 19. Proposed Depth  |  |
| 855'   |  |   |  | 3775'   |  |
| 21. Elevations (Show whether DF, RT, GR, etc.)<br>GR-3267  |  |   |  |   | 22. Approx. Date Work Will Start<br>4/1/95 |

| 23. PROPOSED CASING AND CEMENT PROGRAM |                       |                 |               |                       |
|--|-----------------------|-----------------|---------------|-----------------------|
| SIZE OF HOLE                           | GRADE, SIZE OF CASING | WEIGHT PER FOOT | SETTING DEPTH | QUANTITY OF CEMENT    |
| 12 1/4                                 | WC60, 8 5/8           | 246             | 400'          | 260 SACKS - CIRCULATE |
| 7 7/8                                  | WC50, 5 1/2           | 15.50           | 3775'         | 850 SACKS - CIRCULATE |

## CEMENTING PROGRAM:

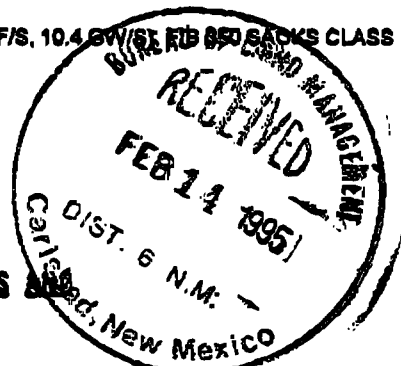
SURFACE CASING - 250 SACKS CLASS C w/ 2% CACL<sub>2</sub> (14.8 PPG, 1.34 CF/S, 6.31 GW/S).

PRODUCTION CASING - 500 SACKS 35/65 POZ H w/ 6% GEL, 5% SALT, 1/4# FLOCELE (12.8 PPG, 1.94 CF/S, 10.4 GW/S) 850 SACKS CLASS H (15.6 PPG, 1.18 CF/S, 5.2 GW/S).

THERE ARE NO OTHER OPERATORS IN THIS QUARTER QUARTER SECTION.

REQUEST TO DOWN-HOLE COMMINGLE THE JALMAT AND LANGLEIE MATTIX WILL BE FILED.

UNORTHODOX LOCATION: EXCEPTION HAS BEEN APPLIED FOR. (SEE ATTACHED LETTER.)

APPROVAL SUBJECT TO  
GENERAL REQUIREMENTS AND  
SPECIAL STIPULATIONS  
ATTACHED

In Above Space Describe Proposed Program: If proposal is to deepen, give data on present productive zone and proposed new productive zone. If proposal is to drill or deepen directionally, give pertinent data on subsurface locations and measured true vertical depths. Give blowout prevention program, if any.

24. I hereby certify that the foregoing is true and correct

SIGNATURE C. Wade Howard TITLE Eng. Assistant DATE 2/10/95  
TYPE OR PRINT NAME C. Wade Howard

(This space for Federal or State office use)

PERMIT NO. \_\_\_\_\_ APPROVAL DATE \_\_\_\_\_  
Application approval does not warrant or certify that the applicant holds legal or equitable title to those rights in the subject lease which would entitle the applicant to conduct operations thereon.  
APPROVED BY [Signature] TITLE AREA MANAGER DATE 4/20/95  
CONDITIONS OF APPROVAL, IF ANY: [Signature]

Title 18 U.S.C. Section 1001, makes it a crime for any person knowingly and willfully to make to any department or agency of the United States any false, fictitious or fraudulent statements or representations as to any matter within its jurisdiction.

*Norma Monte*  
DISTRICT I  
P.O. Box 1980, Hobbs, NM 88241-1980  
DISTRICT II  
P.O. Box Drawer DD, Artesia, NM 88211-0719  
DISTRICT III  
1000 Rio Brazos Rd., Aztec, NM 87410  
DISTRICT IV  
P.O. Box 2088, Santa Fe, NM 87504-2088

State of New Mexico  
Energy, Minerals and Natural Resources Department

OIL CONSERVATION DIVISION

P.O. Box 2088  
Santa Fe, New Mexico 87504-2088

Form C-101  
Revised February 10, 1994  
Instructions on back  
Submit to Appropriate District Office  
State Lease - 6 Copies  
Fee Lease - 5 Copies

☐ AMENDED REPORT

APPLICATION FOR PERMIT TO DRILL, RE-ENTER, DEEPEN, PLUGBACK, OR ADD A ZONE

|  |   |   |
|--|---|---|
| <sup>1</sup> Operator Name and Address<br>TEXACO EXPLORATION & PRODUCTION INC.<br>P.O. Box 3109, Midland Texas 79702 |   | <sup>2</sup> OGRID Number<br>022351     |
|  |   | <sup>3</sup> API Number<br>30-025-32855 |
| <sup>4</sup> Property Code<br>10917  | <sup>5</sup> Property Name<br>COOPER JAL UNIT | <sup>6</sup> Well No.<br>415            |

<sup>7</sup> Surface Location

| UI or lot no. | Section | Township | Range | Lot.Idn | Feet From The | North/South Line | Feet From The | East/West Line | County |
|---------------|---------|----------|-------|---------|---------------|------------------|---------------|----------------|--------|
| D             | 25      | 24-S     | 36-E  |         | 825           | NORTH            | 330           | WEST           | LEA    |

<sup>8</sup> Proposed Bottom Hole Location If Different From Surface

| UI or lot no.                                  | Section | Township | Range | Lot.Idn | Feet From The   | North/South Line | Feet From The | East/West Line | County |
|--|---------|----------|-------|---------|---|------------------|---------------|----------------|--------|
| <sup>9</sup> Proposed Pool 1<br>JALMAT - 37240 |         |          |       |         | <sup>10</sup> Proposed Pool 2<br>LANGLIE MATTIX - 33820 |                  |               |                |        |

|                                   |                                       |   |                                    |  |
|-----------------------------------|---------------------------------------|---|------------------------------------|--|
| <sup>11</sup> Work Type Code<br>N | <sup>12</sup> WellType Code<br>O      | <sup>13</sup> Rotary or C.T.<br>ROTARY      | <sup>14</sup> Lease Type Code<br>P | <sup>15</sup> Ground Level Elevation<br>3307 |
| <sup>16</sup> Multiple<br>No      | <sup>17</sup> Proposed Depth<br>3800' | <sup>18</sup> Formation<br>TNSL-YTS-7RV-QUN | <sup>19</sup> Contractor           | <sup>20</sup> Spud Date<br>4/1/95            |

<sup>21</sup> Proposed Casing and Cement Program

| SIZE OF HOLE | SIZE OF CASING | WEIGHT PER FOOT | SETTING DEPTH | SACKS OF CEMENT | EST. TOP |
|--------------|----------------|-----------------|---------------|-----------------|----------|
| 12 1/4       | 8 5/8          | 24#             | 400'          | 250 SACKS       | SURFACE  |
| 7 7/8        | 5 1/2          | 15.5#           | 3800'         | 850 SACKS       | SURFACE  |
|              |                |                 |               |                 |          |
|              |                |                 |               |                 |          |
|              |                |                 |               |                 |          |

<sup>22</sup> Describe the proposed program. If this application is to DEEPEN or PLUG BACK give the data on the present productive zone and proposed new productive zone. Describe the blowout prevention program, if any. Use additional sheets if necessary.

CEMENTING PROGRAM:

SURFACE CASING - 250 SACKS CLASS C w/ 2% CACL<sub>2</sub> (14.8 PPG, 1.34 CF/S, 6.31 GW/S).

PRODUCTION CASING - 500 SACKS 35/65 POZ H w/ 6% GEL, 5% SALT, 1/4# FLOCELE (12.8 PPG, 1.94 CF/S, 10.4 GW/S). F/B 350 SACKS CLASS H (15.6 PPG, 1.18 CF/S, 5.2 GW/S).

THERE ARE NO OTHER OPERATORS IN THIS QUARTER QUARTER SECTION.

REQUEST TO DOWN-HOLE COMMINGLE THE JALMAT AND LANGLIE MATTIX WILL BE FILED.

<sup>23</sup> I hereby certify that the rules and regulations of the Oil Conservation Division have been complied with and that the information given above is true and complete to the best of my knowledge and belief.

Signature

*C. Wade Howard*

Printed Name

C. Wade Howard

Title Eng. Assistant

Date 2/10/95

Telephone 688-4606

OIL CONSERVATION DIVISION

Approved By:

*Charles A. Noyes, Jr.*

Title:

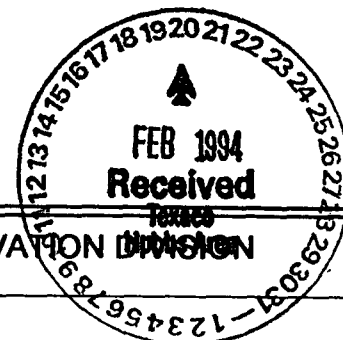
DISTRICT I SUPERVISOR

Approval Date: FEB 14 1995

Expiration Date:

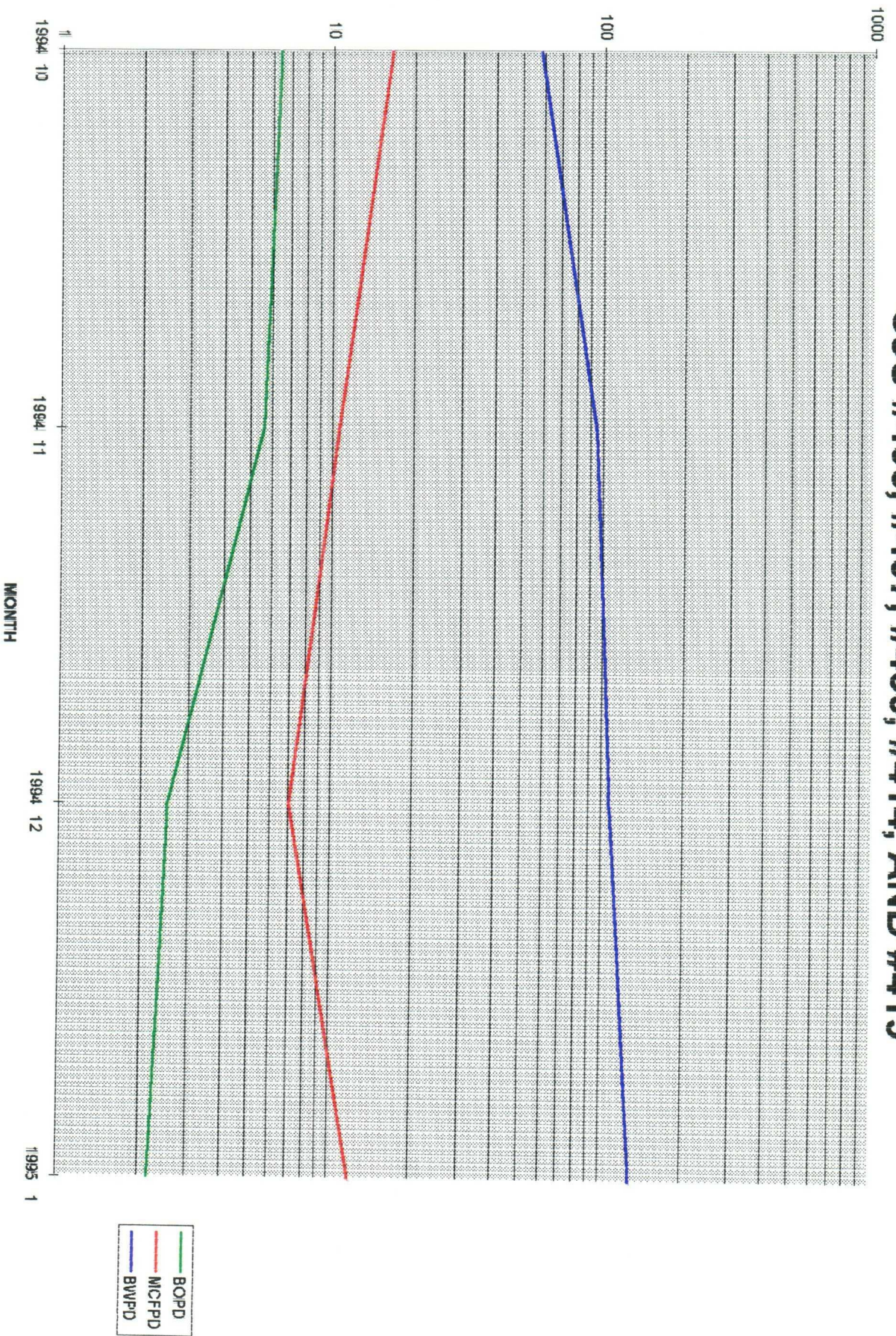
Conditions of Approval:

Attached ☐

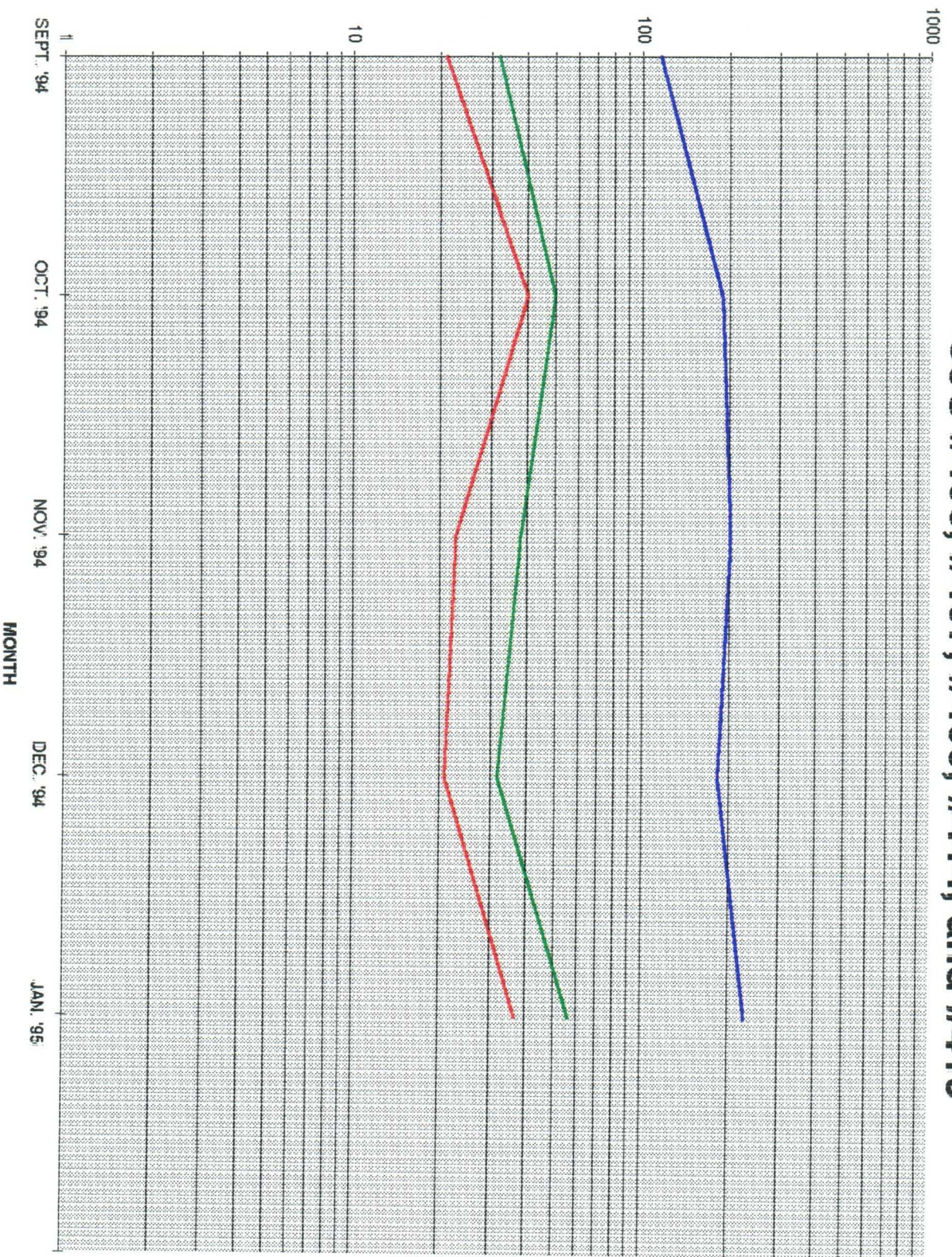


# **NORMALIZED PRODUCTION** **PLOTS**

# 1994 NORMALIZED LANGLEIE MATTIX INFIELD PRODUCERS CJU #406, #407, #409, #414, AND #419



# 1994 NORMALIZED JALMAT INFIELD PRODUCERS CJU #406, #407, #409, #414, and #419



BOPD  
MCFPD  
BWPD

# **STATEMENT OF NOTIFICATION**

**LIST OF 40-ACRE OFFSET OPERATORS TO PROPOSED WELLS**

**OPERATORS OTHER THAN TEXACO E & P :**

408 : NONE

410 : NONE

411 : NONE

412 : NONE

413 : Conoco Inc., Oxy USA Inc.

415: Amoco Production Co., Meridian Oil Inc.

Z 106 b11 724



# **Receipt for Certified Mail**

No Insurance Coverage Provided  
Do not use for International Mail  
(See Reverse)

PS Form 3800, March 1993

|  |    |
|--|----|
| Sent to<br><b>OKT USA INC</b>                                    |    |
| Street and No.<br><b>PO BOX 50250</b>                            |    |
| P.O., State and ZIP Code<br><b>MIDLAND, TX 79702</b>             |    |
| Postage  | \$ |
| Certified Fee  |    |
| Special Delivery Fee   |    |
| Restricted Delivery Fee  |    |
| Return Receipt Showing<br>to Whom & Date Delivered               |    |
| Return Receipt Showing to Whom,<br>Date, and Addressee's Address |    |
| TOTAL Postage<br>& Fees  | \$ |
| Postmark or Date   |    |

Z 106 b11 727



# **Receipt for Certified Mail**

No Insurance Coverage Provided  
Do not use for International Mail  
(See Reverse)

PS Form 3800, March 1993

|  |    |
|--|----|
| Sent to<br><b>ARMCO PROD. CO</b>                                 |    |
| Street and No.<br><b>BOX 68</b>                                  |    |
| P.O., State and ZIP Code<br><b>HOUSTON, TX 77240</b>             |    |
| Postage  | \$ |
| Certified Fee  |    |
| Special Delivery Fee   |    |
| Restricted Delivery Fee  |    |
| Return Receipt Showing<br>to Whom & Date Delivered               |    |
| Return Receipt Showing to Whom,<br>Date, and Addressee's Address |    |
| TOTAL Postage<br>& Fees  | \$ |
| Postmark or Date   |    |

Z 106 b11 725



# **Receipt for Certified Mail**

No Insurance Coverage Provided  
Do not use for International Mail  
(See Reverse)

Z 106 b11 726



# **Receipt for Certified Mail**

No Insurance Coverage Provided  
Do not use for International Mail  
(See Reverse)

rm 3800, March 1993

|  |    |
|--|----|
| Sent to<br><b>ARMCO INC</b>                                      |    |
| Street and No.<br><b>10 BEST DR STE 1004</b>                     |    |
| P.O., State and ZIP Code<br><b>MIDLAND, TX 79705</b>             |    |
| Postage  | \$ |
| Certified Fee  |    |
| Special Delivery Fee   |    |
| Restricted Delivery Fee  |    |
| Return Receipt Showing<br>to Whom & Date Delivered               |    |
| Return Receipt Showing to Whom,<br>Date, and Addressee's Address |    |
| TOTAL Postage<br>& Fees  | \$ |
| Postmark or Date   |    |

rm 3800, March 1993

|  |    |
|--|----|
| Sent to<br><b>ARMCO PROD. CO</b>                                 |    |
| Street and No.<br><b>PO BOX 57810</b>                            |    |
| P.O., State and ZIP Code<br><b>MIDLAND, TX 79710-1810</b>        |    |
| Postage  | \$ |
| Certified Fee  |    |
| Special Delivery Fee   |    |
| Restricted Delivery Fee  |    |
| Return Receipt Showing<br>to Whom & Date Delivered               |    |
| Return Receipt Showing to Whom,<br>Date, and Addressee's Address |    |
| TOTAL Postage<br>& Fees  | \$ |
| Postmark or Date   |    |

Offset Operators:

Please indicate your approval for our request as detailed in the attached package by signing the waiver form below. Please return the signed waiver in the enclosed self-addressed envelope.

Thank you for your cooperation in this matter.

## **WAIVER TO OBJECTION**

### **TEXACO EXPLORATION AND PRODUCTION**

**Application for  
Exception to Rule 303-A  
Downhole Commingle  
Cooper Jal Unit #408, #410, #411, #412, #413, and #415  
Jalmat and Langlie Mattix pools  
Township 24S, Range 36E and 37E  
Lea County, New Mexico**

I/We do hereby waive any objection to Texaco Exploration and Production Inc.'s request for NMOCD administrative approval to commingle the Jalmat and Langlie Mattix zones for the above captioned wells.

Signed: \_\_\_\_\_

Title: \_\_\_\_\_

Company: \_\_\_\_\_

Date: \_\_\_\_\_

BEFORE THE OIL CONSERVATION COMMISSION  
OF THE STATE OF NEW MEXICO

IN THE MATTER OF THE HEARING  
CALLED BY THE OIL CONSERVATION  
COMMISSION OF NEW MEXICO FOR  
THE PURPOSE OF CONSIDERING:

CASE NO. 6085  
Order No. R-5590

APPLICATION OF RESERVE OIL, INC.  
FOR DOWNHOLE COMMINGLING OR POOL  
CONTRACTION AND EXTENSION, LEA  
COUNTY, NEW MEXICO.

ORDER OF THE COMMISSION

BY THE COMMISSION:

This cause came on for hearing at 9 a.m. on November 16, 1977, at Santa Fe, New Mexico, before Examiner Richard L. Stamets,

NOW, on this 22nd day of November, 1977, the Commission, a quorum being present, having considered the testimony, the record, and the recommendations of the Examiner, and being fully advised in the premises,

FINDS:

(1) That due public notice having been given as required by law, the Commission has jurisdiction of this cause and the subject matter thereof.

(2) That the applicant, Reserve Oil, Inc., seeks approval for the downhole commingling of Jalmat and Langlie-Mattix production in the wellbore of its Cooper Jal Unit Wells No. 115 in Unit P of Section 13 and Nos. 121, 134, and 209 in Units B, N, and L of Section 24, Township 24 South, Range 36 East, and No. 117 in Unit N of Section 18, and Nos. 150 and 221 in Units L and N of Section 19, Township 24 South, Range 37 East, Lea County, New Mexico, and an administrative procedure for such approval for future wells.

(3) That, in the alternative, applicant seeks the contraction of the vertical limits of the Jalmat Gas Pool underlying said Cooper Jal Unit Area by the deletion of the Yates and Seven Rivers formations therefrom and the extension of the vertical limits of the Langlie-Mattix Pool to include said formations.

(4) That the applicant has been conducting separate secondary recovery operations in the Jalmat and Langlie-Mattix Pools within said Cooper Jal Unit Area.

(5) That the proposed commingling will permit the applicant to achieve improved drainage in each of said projects which may result in the recovery of additional hydrocarbons from each of the subject pools, thereby preventing waste, and will not violate correlative rights.

(6) That the reservoir characteristics of each of the subject zones are such that underground waste would not be caused by the proposed commingling provided that any such commingled well is not shut-in for an extended period.

(7) That to afford the Commission the opportunity to assess the potential for waste and to expeditiously order appropriate remedial action, the operator should notify the Hobbs district office of the Commission any time any well downhole commingled under provisions of this order is shut-in for 7 consecutive days.

(8) That said Cooper Jal Unit secondary recovery projects have been in operation approximately 6 years and that separate production statistics have been maintained on each of said projects for this same period.

(9) That approval of the alternative application, in this case, would result in the loss of identity of production from the individual projects during their mid-life and should therefore be denied.

(10) That an administrative procedure should be established whereby additional Cooper Jal Unit Wells may be recompleted in such a manner as to permit the downhole commingling of Jalmat and Langlie-Mattix oil production therein.

(11) That in order to allocate the commingled production to each of the commingled zones in the wells, applicant should consult with the supervisor of the Hobbs District Office of the Commission and determine an allocation formula for each of the production zones.

IT IS THEREFORE ORDERED:

(1) That the applicant, Reserve Oil, Inc., is hereby authorized to commingle Jalmat oil and Langlie-Mattix oil production within the wellbore of its Cooper Jal Unit Wells No. 115 in Unit P of Section 13 and Nos. 121, 134, and 209 in Units B, N, and L of Section 24, Township 24 South, Range 36 East, and No. 117 in Unit N of Section 18, and Nos. 150 and 221 in Units L and N of Section 19, Township 24 South, Range 37 East, Lea County, New Mexico.

(2) That the supervisor of the Commission's district office at Hobbs is hereby authorized to grant approval for the downhole commingling of Jalmat oil and Langlie-Mattix oil production within the wellbore of additional wells within said Cooper Jal Unit.

(3) That the applicant shall consult with the supervisor of the Commission's district office at Hobbs and determine a formula for the allocation of production to each zone of any well downhole commingled under provisions of this order,

(4) That the downhole commingling authority granted by this order shall terminate upon abandonment of secondary recovery operations in the Jalmat and Langlie-Mattix Pools within said Cooper Jal Unit.

(5) That the application of Reserve Oil, Inc., for contraction of the vertical limits of the Jalmat Gas underlying said Cooper Jal Unit Area by the deletion of the Yates and Seven Rivers formations therefrom and the extension of the Langlie-Mattix Pool to include said formations is hereby denied.

(6) That to afford the Commission the opportunity to assess the potential for waste and to expeditiously order appropriate remedial action, the operator should notify the Hobbs district office of the Commission any time any well commingled under authority granted by this order is shut-in for 7 consecutive days,

(7) That jurisdiction of this cause is retained for the entry of such further orders as the Commission may deem necessary.

DONE at Santa Fe, New Mexico, on the day and year hereinabove designated.

STATE OF NEW MEXICO  
OIL CONSERVATION COMMISSION

PHIL R. LUCERO, Chairman

  
EMERY C. ARNOLD, Member

  
JOE D. RAMEY, Member & Secretary

S E A L

jr/

STATE OF NEW MEXICO  
ENERGY, MINERALS AND NATURAL RESOURCES DEPARTMENT  
OIL CONSERVATION DIVISION

IN THE MATTER OF THE HEARING  
CALLED BY THE OIL CONSERVATION  
DIVISION FOR THE PURPOSE OF  
CONSIDERING;

CASE NO. 10879  
Order No. R-10033

APPLICATION OF TEXACO EXPLORATION AND  
PRODUCTION INC. FOR AN EXCEPTION TO  
DIVISION GENERAL RULE 303-A TO PERMIT  
DOWNHOLE COMMINGLING, LEA COUNTY,  
NEW MEXICO.

ORDER OF THE DIVISION

BY THE DIVISION:

This cause came on for hearing at 8:15 a.m. on December 2, 1993, at Santa Fe, New Mexico, before Examiner Jim Morrow.

NOW, on this 10th day of December, 1993, the Division Director, having considered the testimony, the record, and the recommendations of the Examiner and being fully advised in the premises,

FINDS THAT:

(1) Due public notice having been given as required by law, the Division has jurisdiction of this cause and the subject matter thereof.

(2) The applicant, Texaco Exploration and Production, Inc. (Texaco), seeks approval to downhole commingle Jalmat and Langlie Mattix oil production within seven certain wells (two existing and five to be drilled) in its Cooper Jal Unit located in Sections 13 and 24, Township

to downhole commingle Jalmat and Langlie Mattix oil production within seven certain wells (two existing and five to be drilled) in its Cooper Jal Unit located in Sections 13 and 24, Township 24 South, Range 36 East and Section 19, Township 24 South, Range 37 East, NMPM, Lea County, New Mexico. Locations for the seven wells are shown in Exhibit "A" attached.

(3) Offset operators were notified of Texaco's application as required by Division General Rules.

(4) Waterflood operations have been conducted on the Cooper Jal Unit since the early 1970's. Applicant recently received Division approval to redevelop the flood and apply for Enhanced Oil Recovery Act tax credit (Division Order R-9983).

(5) Ownership (both working interest and royalty interest) of the Jalmat and Langlie Mattix zones is common throughout the Cooper Jal Unit.

(6) The Jalmat Pool produces from the Tansill and Yates formations and the upper portion of the Seven Rivers. The Langlie Mattix produces from the lower portion of the Seven Rivers formation and the Queen.

(7) Waterflood operations for the Jalmat and Langlie Mattix intervals utilize common surface production and injection facilities. Both zones are commingled and open to injection in several injection wells. Texaco plans to equip the remaining injection wells in this manner as they redevelop the project.

(8) Fifteen producing wells in the flood are currently producing with downhole commingling of the Jalmat and Langlie Mattix intervals.

(9) Bottomhole pressure information submitted by the applicant indicates that pressure is approximately 450 psia in the lower formation (Langlie Mattix) and approximately 380 psia in the upper (Jalmat).

(10) No cross flow between formations is expected to occur due to the nearly equal bottomhole pressures and applicant's intent to keep all producing wells pumped down.

(11) No compatibility problems have been encountered and none are expected from mixing waters from the two producing intervals.

(12) Texaco proposes to allocate production in each well as follows:

- (a) Obtain a stabilized Jalmat test prior to commingling.
- (b) Obtain a stabilized test of both zones after commingling.
- (c) Calculate an allocation percentage for oil and a separate allocation percentage for gas for each well based on the above tests.

(13) Texaco's witness testified that they cannot economically justify the drilling of the five wells proposed in this application if downhole commingling is not authorized. The wells are needed to improve ultimate recovery of the project.

(14) No interested party appeared at the hearing and objected to the application.

(15) Approval of this application for downhole commingling will prevent waste and will not harm correlative rights.

**IT IS THEREFORE ORDERED THAT:**

(1) The applicant, Texaco, is hereby authorized to downhole commingle Jalmat and Langlie Mattix oil and gas production within seven wells in its Cooper Jal Unit located in Sections 13 and 24, Township 24 South, Range 36 East and Section 19, Township 24 South, Range 37 East, NMPM, Lea County, New Mexico. Locations for the seven wells are shown in Exhibit "A" attached.

(2) Allocation of commingled production for each well shall be determined using the method set out in Finding Paragraph (12) of this order.

(3) The applicant shall notify the Supervisor of the Hobbs district office prior to conducting the tests to be used in calculating allocation percentages. Complete results of all such tests shall be submitted to both the Hobbs district office and the Division office in Santa Fe.

(4) Jurisdiction of this cause is retained for the entry of such further orders as the Division may deem necessary.

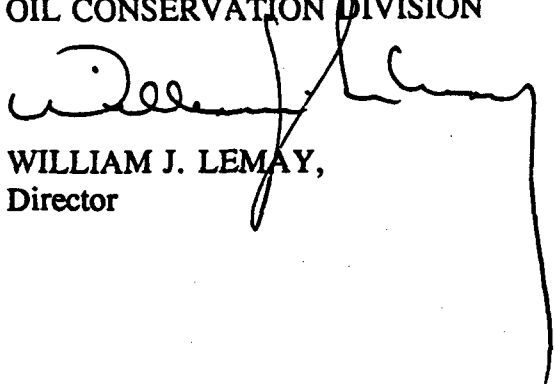
-4-

Case No. 10879

Order No. R-10033

DONE at Santa Fe, New Mexico, on the day and year hereinabove designated.

STATE OF NEW MEXICO  
OIL CONSERVATION DIVISION



WILLIAM J. LEMAY,  
Director

S E A L

dr/

TEXACO  
COOPER JAL UNIT  
LEA COUNTY, NEW MEXICO

PROPOSED DOWNHOLE COMMINGLING WELL LOCATIONS

| <u>EXISTING WELLS</u>     | <u>LOCATION</u>                              |
|---------------------------|--|
| No. 113                   | 330' FSL and 2310' FWL (Unit M) of Sec. 13   |
| No. 208                   | 2310' FNL and 1650' FWL (Unit F) of Sec. 19  |
| <br><u>PROPOSED WELLS</u> |  |
| No. 401                   | 2400' FSL and 1130' FWL (Unit L) of Sec. 19, |
| No. 402                   | 2150' FSL and 50' FWL (Unit L) of Sec. 19,   |
| No. 403                   | 150' FNL and 100' FWL (Unit D) of Sec. 19,   |
| No. 404                   | 510' FNL and 2310' FEL (Unit B) of Sec. 24,  |
| No. 405                   | 1055' FSL and 1385' FWL (Unit N) of Sec. 19. |

EXHIBIT "A"  
Case No. 10879  
Order No. R-10033

DHC-1131



OIL CONSERVATION DIVISION  
RECEIVED

STATE OF NEW MEXICO

ENERGY, MINERALS AND NATURAL RESOURCES DEPARTMENT

'95 NOV 27 AM 8 52

OIL CONSERVATION DIVISION  
HOBBS DISTRICT OFFICE

11/20/95

GOVERNOR

POST OFFICE BOX 1980  
HOBBS, NEW MEXICO 88241-1980  
(505) 393-6161

OIL CONSERVATION DIVISION  
P. O. BOX 2088  
SANTA FE, NEW MEXICO 87501

RE: Proposed:

MC \_\_\_\_\_  
DHC X \_\_\_\_\_  
NSL \_\_\_\_\_  
NSP \_\_\_\_\_  
SWD \_\_\_\_\_  
WFX \_\_\_\_\_  
PMX \_\_\_\_\_

Gentlemen:

I have examined the application for the:

Texaco E&P Inc Cooper Jal Unit #128-E 19-24s-37e  
Operator Lease & Well No. Unit S-T-R

and my recommendations are as follows:

OK  
\_\_\_\_\_  
\_\_\_\_\_  
\_\_\_\_\_

Yours very truly,

Jerry Sexton  
Jerry Sexton  
Supervisor, District 1

/ed