

BURLINGTON
RESOURCES
San Juan Division

Susp: 8-15-2005

P-MESO- 523434481

Sent Federal Express

July 21, 2005

Mr. Michael Stogner
New Mexico Oil Conservation Division
1220 South St. Francis Drive
Santa Fe, New Mexico 87504

30-045-33151

2005 JUL 25 AM 9 42

Re: Randleman #1R
735' FNL, 2365' FWL, (surface hole) Section 13, T-31-N, R-11-W,
745' FNL, 2364' FWL, (bottom hole) Section 13, T-31-N, R-11-W,
San Juan County, NM API #30-045-33151

Dear Mr. Stogner:

Burlington Resources is applying for administrative approval for a new NSL order for an unorthodox gas well location for the subject well for the Blanco Mesaverde and Basin Dakota formation. Due to down hole problems with casing while drilling through the upper Dakota in our Randleman #1B well, which caused Burlington to abandon this well before reaching the targeted bottom hole location, we are proposing to re-drill the #1B well by utilizing the proposed #1R well bore which will be landing at a close proximity to the same intended bottom hole location for the #1B well. Burlington will utilize directional tools to insure that we do not contact the old bore hole of the Randleman # 1B well while drilling the # 1R well.

Administrative order # NSL-4988 was previously approved on the Randleman #1B (see attached), located ten surface feet away from the proposed #1R location

The preliminary well plan calls for a mud-drilled intermediate TD in the Lower Mancos to a point above the Dakota interval. A downhole motor will be used to steer the borehole to the vicinity of the original well. Casing (7") will be set to protect the Mancos, and the Dakota/lower Dakota will be drilled with air to final TD below the Morrison top. The Randleman #1B was "completed" in the uppermost Dakota reservoir, leaving over 300 feet to final TD. The Randleman #1R will expose at least three additional reservoir units. Burlington presently has plans to temporarily abandon the Mesaverde/Dakota formations on the Randleman #1B, with future plans to attempt to complete the Fruitland Coal (possibly Fruitland Sands), at such time we would apply for another NSL for those formations.

The Randleman # 1B well was staked at this location due to terrain, geology and utilities. The terrain slopes steeply to the west into the wash, as shown on the attached aerial photography and topographic maps. The location needs to stay in the eastern portion of the W/2 in order to properly drain these formations and to not encroach on the current drainage patterns of the Mesaverde formation, as shown on the attached drainage map. A majority of the area within the legal spacing window for the Mesaverde and Dakota formation is encompassed by a large arroyo, steep cliffs, underground and above ground utilities and irrigated farm land. Burlington would not want to disturb the irrigation system in place. Consequently, the Randleman #1B location was staked non-standard for the Mesaverde and Dakota formation, in order to best fit the existing geology and terrain. We are requesting to use the same surface pad area for the Randleman # 1R well.

Re: Randleman #1R
735' FNL, 2365' FWL, (surface hole) Section 13, T-31-N, R-11-W,
745' FNL, 2364' FWL, (bottom hole) Section 13, T-31-N, R-11-W,
San Juan County, NM API #30-045-33151

I hereby certify that the following offset owners/operators have been notified by certified mail of our application for administrative approval for non-standard well location of the above well.

BP America`
Attn: Bryan Anderson
San Juan B U
Westlake 1, Room 19-114
501 Westlake Park Blvd.
Houston, TX 77079

Re: Randleman #1R
735' FNL, 2365' FWL, (surface hole) Section 13, T-31-N, R-11-W,
745' FNL, 2364' FWL, (bottom hole) Section 13, T-31-N, R-11-W,
San Juan County, NM API #30-045-33151

The following attachments are for your review:

- Approved application for Permit to Drill and C-102 at referenced location
- Offset operators / owners plat
- 9 Section plat
- Topographic map of Section 13
- Aerial Photography Map
- Geologic Summary
- Drainage Map
- Approved NSL Order – 4988 on Randleman 1B

Three copies of this application are being submitted to offset operator / owner by certified mail. Please let me know if you have any questions about this application.

Sincerely,

A handwritten signature in cursive script that reads "Joni Clark". The signature is written in black ink and is positioned above the printed name and title.

Joni Clark
Regulatory Specialist



NEW MEXICO ENERGY, MINERALS and NATURAL RESOURCES DEPARTMENT

BILL RICHARDSON

Governor

Joanna Prukop
Cabinet Secretary

January 29, 2004

Lori Wrotenbery

Director

Oil Conservation Division

BURLINGTON RESOURCES

Burlington Resources Oil & Gas Company, L.P.
P. O. Box 4289
Farmington, New Mexico 87499-4289

FEB 2 2004

FARMINGTON, NEW MEXICO
REGULATORY

Attention: Joni Clark
Regulatory Specialist

Administrative Order NSL-4988

Dear Ms. Clark:

Reference is made to the following: (i) your application submitted to the New Mexico Oil Conservation Division ("Division") on January 9, 2004 (*administrative application reference No. pMES0-401467814*); and (ii) the records of the Division in Aztec and Santa Fe: all concerning Burlington Resources Oil & Gas Company's ("Burlington") request for exceptions to the well location requirements provided within both the:

(A) "Special Rules for the Blanco-Mesaverde Pool," as promulgated by Division Order No. R-10987-A, issued in Case No. 12069 and dated February 1, 1999, as amended by Division Order No. R-10987-A (1), dated December 2, 2002; and

(B) "Special Rules for the Basin-Dakota Pool," as promulgated by Division Order No. R-10987-B, issued in Case No. 12290 and dated June 30, 2000, as amended by Division Orders No. R-10987-B (1), dated August 10, 2000, and R-10987-B (2), dated January 29, 2002:

Burlington proposes to drill its Randleman Well No. 1-B (API No. 30-045-31932) at an unorthodox gas well location in both the Blanco-Mesaverde (72319) and Basin-Dakota (71599) Pools 725 feet from the North line and 2390 feet from the West line (Unit C) of Section 13, Township 31 North, Range 11 West, NMPM, San Juan County, New Mexico.

Gas production from the Blanco-Mesaverde Pool is to be included within an existing standard 320-acre stand-up gas spacing and proration unit ("GPU") comprising the W/2 of Section 13, which is currently dedicated to Burlington's two: (i) Randleman Well No. 1 (API No. 30-045-10698), located at a standard gas well location 1750 feet from the South line and 1650 feet from the West line (Unit K) of Section 13; and (ii) Randleman Well No. 1-A (API No. 30-045-22104), located at a standard gas well location 1635 feet from the North line and 1150 feet from the West line (Unit E) of Section 13.

The proposed Randleman Well No. 1-B is to be an initial Dakota gas well within this same 320-acre stand-up GPU.

This application has been duly filed under the provisions of Division Rules 104.F and 605.B and the applicable rules governing both pools.

By the authority granted me under the provisions of Division Rule 104.F (2), the above-described unorthodox Basin-Dakota/Blanco-Mesaverde gas well location for the above-described Randleman Well No. 1-B is hereby approved. All of the aforementioned wells and both spacing units will be subject to all existing rules, regulations, policies, and procedures applicable to prorated gas pools in Northwest, New Mexico.

Sincerely,

A handwritten signature in black ink, appearing to read "Lori Wrotenbery", followed by a stylized flourish or set of initials.

Lori Wrotenbery
Director

LW/mes

cc: New Mexico Oil Conservation Division – Aztec

District I

1625 N. French Dr., Hobbs, NM 88240

District II

1301 W. Grand Ave., Artesia, NM 88210

District III

1000 Rio Brazos Rd., Aztec, NM 87410

District IV1220 S. St Francis Dr., Santa Fe, NM
87505

State of New Mexico
Energy, Minerals and Natural Resources
Oil Conservation Division
1220 S. St Francis Dr.
Santa Fe, NM 87505

Form C-101

Permit 11246

APPLICATION FOR PERMIT TO DRILL

Operator Name and Address BURLINGTON RESOURCES OIL & GAS COMPANY LP PO Box 4289 Farmington, NM 87499		OGRID Number 14538
		API Number 30-045-33151
Property Code 7412	Property Name RANDLEMAN	Well No. 001R

Surface Location

UL or Lot	Section	Township	Range	Lot Idn	Feet From	N/S Line	Feet From	E/W Line	County
C	13	31N	11W	C	735	N	2365	W	San Juan

Bottom Holes**Pool: BASIN DAKOTA (PRORATED GAS) 71599**

UL or Lot	Section	Township	Range	Lot Idn	Feet From	N/S Line	Feet From	E/W Line	County
C	13	31N	11W	C	745	N	2364	W	San Juan

Pool: BLANCO-MESAVERDE (PRORATED GAS) 72319

UL or Lot	Section	Township	Range	Lot Idn	Feet From	N/S Line	Feet From	E/W Line	County
C	13	31N	11W	C	745	N	2364	W	San Juan

Work Type New Well	Well Type GAS	Cable/Rotary	Lease Type Private	Ground Level Elevation 5866
Multiple Y	Proposed Depth 7124	Formation Dakota Formation	Contractor	Spud Date

Proposed Casing and Cement Program

Type	Hole Size	Casing Size	Casing Weight/ft	Setting Depth	Sacks of Cement	Estimated TOC
Surf	12.25	9.625	32.3	120	88	0
Int1	8.75	7	20	2753	320	0
Prod	6.25	4.5	10.5	7259	300	2653

Casing/Cement Program: Additional Comments

If the 9 5/8 surface casing is pre-set drilled (Mote) will cement 12sxs Type I, II cement w/20% flyash mixed (1.61cu/sx). Will bring cement to surface. Wait on cement for 24hrs for pre-set holes before pressure testing or drilling out. This a down hole commingle Mesaverde/Dakota well. Will submit DHC before commingling.

Proposed Blowout Prevention Program

Type	Working Pressure	Test Pressure	Manufacturer
Annular	2000	2000	

I hereby certify that the information given above is true and complete to the best of my knowledge and belief.

Electronically Signed By: Joni Clark

Title: Specialist

Date: 06/08/2005

Phone: 505-326-9701

OIL CONSERVATION DIVISION

Electronically Approved By: Steve Hayden

Title: Geologist

Approval Date: 06/17/2005

Expiration Date: 06/17/2006

Conditions of Approval:

There are conditions. See Attached.

DISTRICT I
1625 N. French Dr., Hobbs, N.M. 88240

State of New Mexico
Energy, Minerals & Natural Resources Department

Form C-102
Revised August 15, 2000

DISTRICT II
811 South First, Artesia, N.M. 88210

DISTRICT III
1000 Rio Brazos Rd., Aztec, N.M. 87410

DISTRICT IV
2040 South Pacheco, Santa Fe, NM 87505

OIL CONSERVATION DIVISION
2040 South Pacheco
Santa Fe, NM 87505

Submit to Appropriate District Office
State Lease - 4 Copies
Fee Lease - 3 Copies

☐ AMENDED REPORT

WELL LOCATION AND ACREAGE DEDICATION PLAT

¹ API Number 30--045-33151	² Pool Code 72319/71599	³ Pool Name Blanco Mesaverde/Basin Dakota
⁴ Property Code 7412	⁵ Property Name RANDLEMAN	⁶ Well Number 1R
⁷ GRID No. 14538	⁸ Operator Name BURLINGTON RESOURCES OIL AND GAS COMPANY LP	⁹ Elevation 5866'

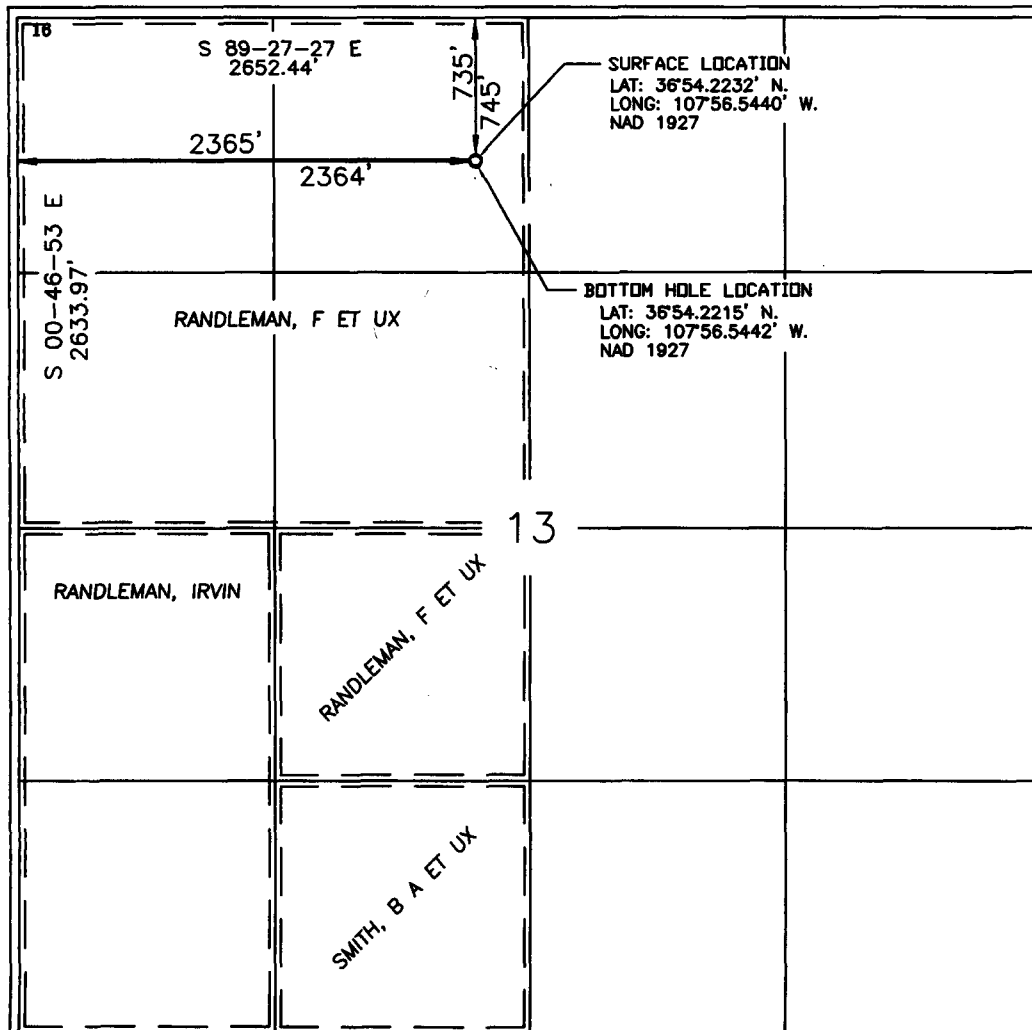
¹⁰ Surface Location

UL or lot no.	Section	Township	Range	Lot Idn	Feet from the	North/South line	Feet from the	East/West line	County
C	13	31-N	11-W		735'	NORTH	2365'	WEST	SAN JUAN

¹¹ Bottom Hole Location If Different From Surface

UL or lot no.	Section	Township	Range	Lot Idn	Feet from the	North/South line	Feet from the	East/West line	County
C	13	31-N	11-W		745'	NORTH	2364'	WEST	SAN JUAN
¹² Dedicated Acres W/2 320 acres			¹³ Joint or Infill		¹⁴ Consolidation Code		¹⁵ Order No.		

NO ALLOWABLE WILL BE ASSIGNED TO THIS COMPLETION UNTIL ALL INTERESTS HAVE BEEN CONSOLIDATED
OR A NON-STANDARD UNIT HAS BEEN APPROVED BY THE DIVISION



¹⁷ OPERATOR CERTIFICATION

I hereby certify that the information contained herein is true and complete to the best of my knowledge and belief

Joni Clark
Signature
Joni Clark
Printed Name
Sr. Regulatory Specialist
Title
6-21-05
Date

¹⁸ SURVEYOR CERTIFICATION

I hereby certify that the well location shown on this plat was plotted from field notes of actual surveys made by me or under my supervision, and that the same is true and correct to the best of my belief.

4-11-05
Date of Survey
Signature and Seal of Professional Surveyor
15703
Certificate Number

BURLINGTON RESOURCES OIL & GAS COMPANY LP

RANDLEMAN #1R

735' FNL 2365' FWL

SEC 13, T31N, R11W N.M.P.M.

SAN JUAN COUNTY, NEW MEXICO

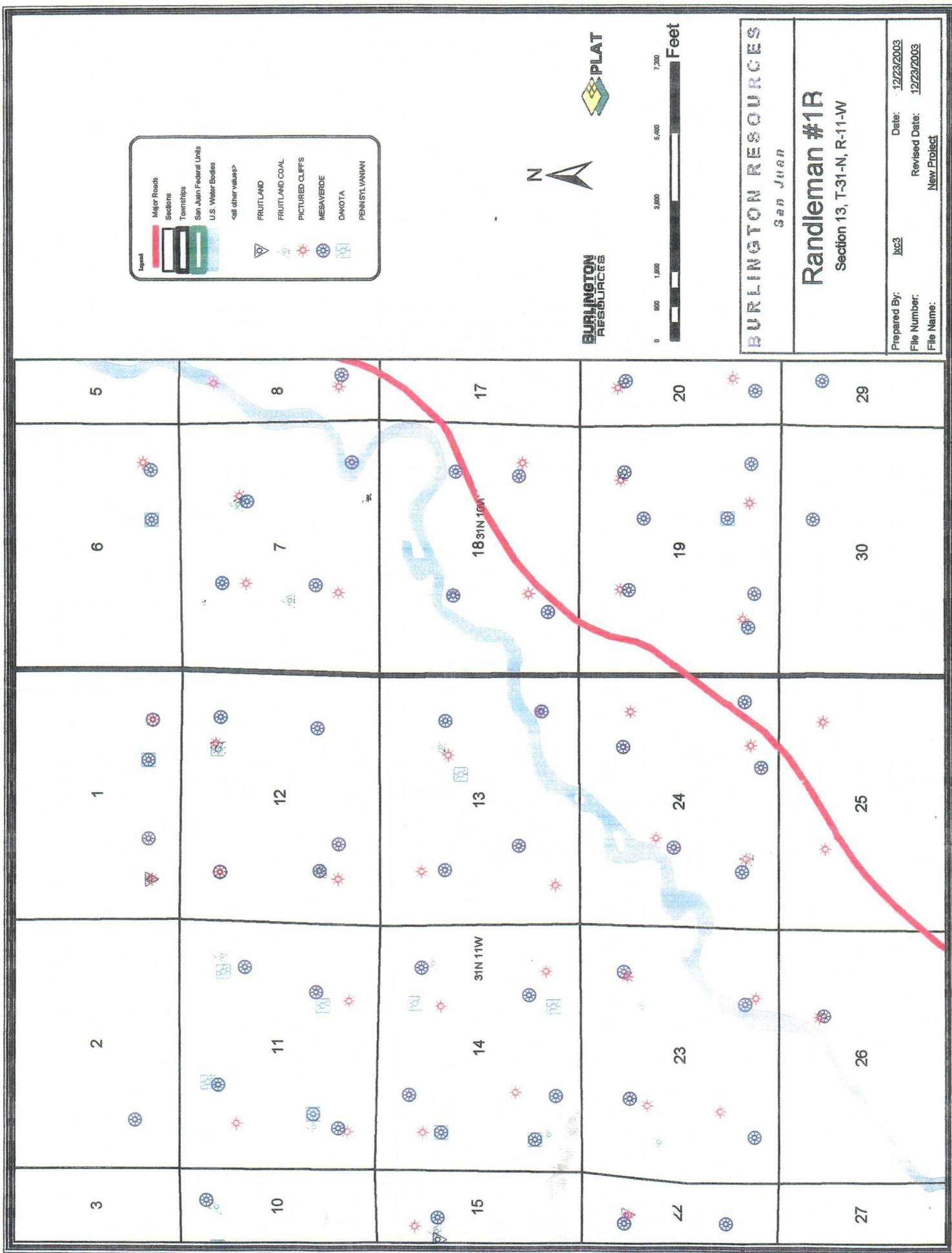
APD MAP #1

NO NEW FEE ACCESS

LEGAL SPACING WINDOW FOR THE
MESAVERDE & DAKOTA FORMATION

0 1000 FEET 0 500 1000 METERS

Printed from TOPOI ©2001 National Geographic Holdings (www.topo.com)

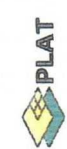


Legend

- Major Roads
- Sections
- Townships
- San Juan Federal Units
- U.S. Water Bodies
- <all other values>
- FRUITLAND
- FRUITLAND COAL
- PICTURED CLIFFS
- MESAVERDE
- DAKOTA
- PENNSYLVANIAN



BURLINGTON RESOURCES



BURLINGTON RESOURCES
San Juan

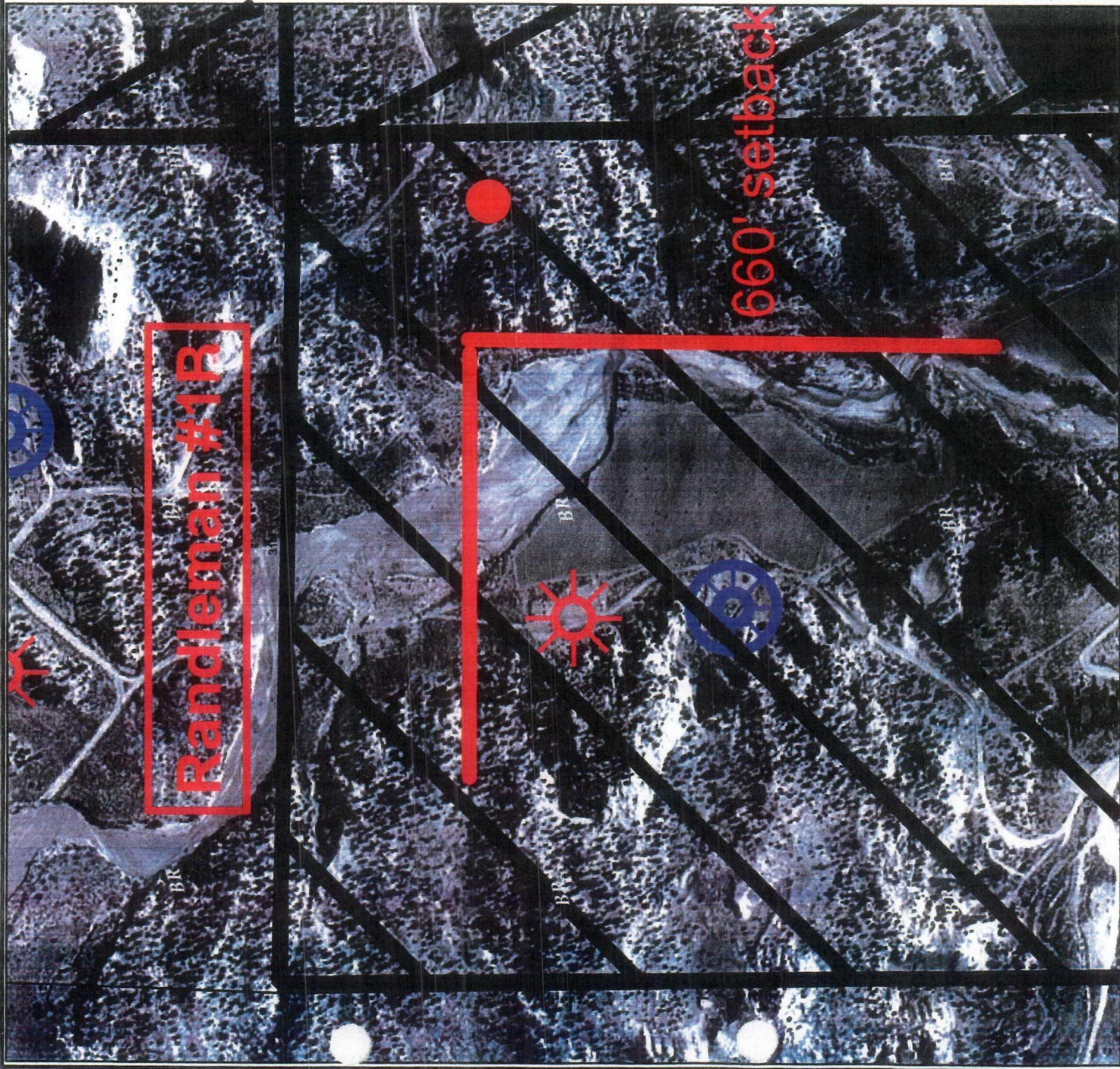
Randleman #1B
Section 13, T-31-N, R-11-W

Prepared By: **JXC3** Date: **12/23/2003**
 File Number: **12/23/2003**
 File Name: **New Project**

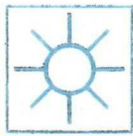
Childers



Drainage Area
(based on EUR for well)



MESAVERDE



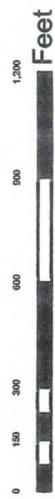
DAKOTA



PENNSYLVANIAN

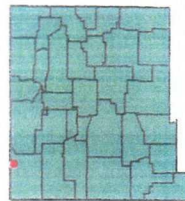


BURLINGTON
RESOURCES



1:71,167,736 - 1" equals 5,930,645'

GCS North American 1927



BURLINGTON RESOURCES

San Juan

Randleman # 1B Well

Sec. 13, T31N, R11W
San Juan Co. NM

Prepared By: Alan Alexander

Date: 1/5/2004

File Number:

Revised Date: 1/5/2004

File Name: c:\plat\Public\Projects\Randleman #1B\Randleman #1B.mxd