

ABOVE THIS LINE FOR DIVISION USE ONLY

NEW MEXICO OIL CONSERVATION DIVISION
- Engineering Bureau -
1220 South St. Francis Drive, Santa Fe, NM 87505



ADMINISTRATIVE APPLICATION CHECKLIST

THIS CHECKLIST IS MANDATORY FOR ALL ADMINISTRATIVE APPLICATIONS FOR EXCEPTIONS TO DIVISION RULES AND REGULATIONS WHICH REQUIRE PROCESSING AT THE DIVISION LEVEL IN SANTA FE

Application Acronyms:

[NSL-Non-Standard Location] [NSP-Non-Standard Proration Unit] [SD-Simultaneous Dedication]
[DHC-Downhole Commingling] [CTB-Lease Commingling] [PLC-Pool/Lease Commingling]
[PC-Pool Commingling] [OLS - Off-Lease Storage] [OLM-Off-Lease Measurement]
[WFX-Waterflood Expansion] [PMX-Pressure Maintenance Expansion]
[SWD-Salt Water Disposal] [IPI-Injection Pressure Increase]
[EOR-Qualified Enhanced Oil Recovery Certification] [PPR-Positive Production Response]

[1] **TYPE OF APPLICATION** - Check Those Which Apply for [A]

[A] Location - Spacing Unit - Simultaneous Dedication
☐ NSL ☐ NSP ☐ SD

Check One Only for [B] or [C]

[B] Commingling - Storage - Measurement
☐ DHC ☐ CTB ☐ PLC ☐ PC ☐ OLS ☐ OLM

[C] Injection - Disposal - Pressure Increase - Enhanced Oil Recovery
☐ WFX ☐ PMX ☐ SWD ☐ IPI ☐ EOR ☐ PPR

[D] Other: Specify _____

[2] **NOTIFICATION REQUIRED TO:** - Check Those Which Apply, or ☐ Does Not Apply

[A] ☐ Working, Royalty or Overriding Royalty Interest Owners

[B] ☐ Offset Operators, Leaseholders or Surface Owner

[C] ☐ Application is One Which Requires Published Legal Notice

[D] ☐ Notification and/or Concurrent Approval by BLM or SLO
U.S. Bureau of Land Management - Commissioner of Public Lands, State Land Office

[E] ☐ For all of the above, Proof of Notification or Publication is Attached, and/or,

[F] ☐ Waivers are Attached

[3] **SUBMIT ACCURATE AND COMPLETE INFORMATION REQUIRED TO PROCESS THE TYPE OF APPLICATION INDICATED ABOVE.**

[4] **CERTIFICATION:** I hereby certify that the information submitted with this application for administrative approval is accurate and complete to the best of my knowledge. I also understand that no action will be taken on this application until the required information and notifications are submitted to the Division.

Note: Statement must be completed by an individual with managerial and/or supervisory capacity.

Print or Type Name

Signature

Title

Date

e-mail Address

devon

Devon Energy Corporation
20 North Broadway
Oklahoma City, Oklahoma 73102-8260

FAX

To: MIKE STOGNER

From: KEN GRAY

Fax: 505-476-3462

Date: 8/17/05

Phone:

Pages: (including cover page)

Re: CDU #68

CC:

☐ Urgent

☐ For Review

☐ Please Comment

☐ Please Reply

☐ Please Recycle

• Comments:



Devon Energy Corporation
20 North Broadway
Oklahoma City, Oklahoma 73102-8260
Fax 405-552-8113

August 17, 2005

New Mexico Oil Conservation Division
1220 South St. Francis Drive
Santa Fe, NM 87505
Attn: Michael Stogner

RE: Cotton Draw Unit #68
2310' FNL & 1980' FWL
Section 12-T25S-R31E
Eddy County, New Mexico

Gentlemen:

Devon Energy Production Company, L.P. ("Devon"), as Operator, has recompleted this well in the Atoka formation. This well was originally drilled to a total depth of 16,868' in June 1970. The well was plugged back and completed in the Morrow formation, was subsequently recompleted to the Wolfcamp formation in May 1977 and has been in a TA'd status since at least October 1994 prior to Devon's recompletion in the Atoka interval.

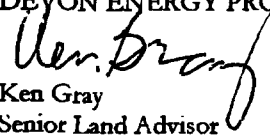
Inasmuch as the recompleted Atoka is located at an unorthodox location from that permitted by the current Statewide Pool Rules, Devon respectfully requests that the Commission administratively approve this application for an unorthodox location in accordance with Division Rule 104(F)(3). This unorthodox location affects the owners in the E/2 Section 12-T25S-R31E, being XTO Energy, Inc. and Devon. Devon and XTO Energy, Inc. are equal owners in this well and of all the affected offset acreage in this portion of the Cotton Draw Unit Area. Therefore, XTO Energy, Inc. has been given notice of this administrative application.

Attached for your review you will find a land plat reflecting Devon and XTO Energy, Inc as the only affected parties, porosity and resistivity logs reflecting the Atoka interval of interest, a State of New Mexico form C-102 for each of the previous recompletions

Feel free to contact the undersigned at (405) 552-4633 if there are any concerns or questions regarding this application.

Yours very truly,

DEVON ENERGY PRODUCTION COMPANY, L.P.


Ken Gray
Senior Land Advisor
KG\CDU 68 UL
Enclosure

[illegible]

NEW MEXICO OIL CONSERVATION COMMISSION
WELL LOCATION AND ACREAGE DEDICATION PLAT

Form C-102
Supersedes C-120
Effective 1-4-85

All distances must be from the outer boundaries of the Section.

Owner Devon Energy Production Company, LP		Lease Cotton Draw Unit		Well No. 68
Unit Letter F	Section 12	Township 25 South	Range 31 East	County Eddy
Actual Footage Location of Well:				
2310 feet from the North line and		1980 feet from the West line		Sec. 12
Ground Level Elev. 3434'	Producing Formation ATOKA	Pool ATOKA	Dedicated Acreage: 320 Acres	
<p>1. Outline the acreage dedicated to the subject well by colored pencil or hachure marks on the plat below.</p> <p>2. If more than one lease is dedicated to the well, outline each and identify the ownership thereof (both as to working interest and royalty).</p> <p>3. If more than one lease of different ownership is dedicated to the well, have the interests of all owners been consolidated by communitization, unitization, force-pooling, etc?</p> <p><input checked="" type="checkbox"/> Yes <input type="checkbox"/> No If answer is "yes," type of consolidation <u>Unitization & Development Agreement</u></p> <p>If answer is "no," list the owners and tract descriptions which have actually been consolidated. (Use reverse side of this form if necessary.) _____</p> <p>No allowable will be assigned to the well until all interests have been consolidated (by communitization, unitization, forced-pooling, or otherwise) or until a non-standard unit, eliminating such interests, has been approved by the Commission.</p>				
				<p>CERTIFICATION</p> <p>I hereby certify that the information contained herein is true and complete to the best of my knowledge and belief.</p> <p><i>Ronnie Slack</i></p> <p>Name Ronnie Slack</p> <p>Position Engineering Technician</p> <p>Company Devon Energy Production Co</p> <p>Date 8/4/05</p> <p>I hereby certify that the well location shown on this plat was plotted from field notes of actual surveys made by me or under my supervision, and that the same is true and correct to the best of my knowledge and belief.</p> <p>Date Surveyed 12/2/69</p> <p>Registered Professional Engineer and/or Land Surveyor <i>B. L. Eiland</i> B. L. Eiland</p> <p>Certificate No. 4386</p>

Section 12
Standard 640 acres

NEW MEXICO OIL CONSERVATION COMMISSION
WELL LOCATION AND ACREAGE DEDICATION PLAT

Form C-102
 Supersedes C-128
 Effective 1-1-65

All distances must be from the outer boundaries of the Section.

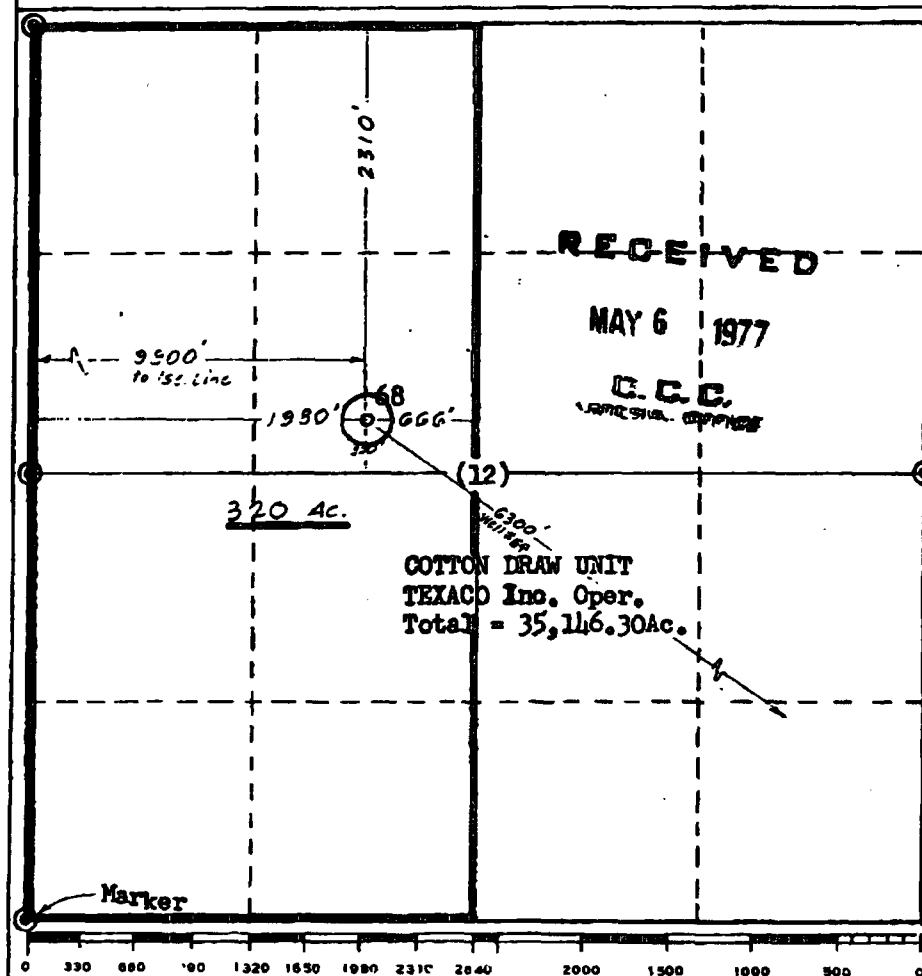
Operator TEXACO Inc.			Lease Cotton Draw Unit		Well No. 68
Unit Letter F	Section 12	Township 25 South	Range 31 East	County Eddy	
Actual Footage Location of Well: 2310 feet from the North line and 1980 feet from the West line Sec. 12					
Ground Level Elev. 3434'	Producing Formation Wolfcamp (Gas)	Pool Badina Wolfcamp (Gas)	Dedicated Acreage: 320 Acres		

1. Outline the acreage dedicated to the subject well by colored pencil or hatchure marks on the plat below.
2. If more than one lease is dedicated to the well, outline each and identify the ownership thereof (both as to working interest and royalty).
3. If more than one lease of different ownership is dedicated to the well, have the interests of all owners been consolidated by communitization, unitization, force-pooling, etc?

☒ Yes ☐ No If answer is "yes," type of consolidation **Unitization & Development Agreement**

If answer is "no," list the owners and tract descriptions which have actually been consolidated. (Use reverse side of this form if necessary.)

No allowable will be assigned to the well until all interests have been consolidated (by communitization, unitization, forced-pooling, or otherwise) or until a non-standard unit, eliminating such interests, has been approved by the Commission.



CERTIFICATION

I hereby certify that the information contained herein is true and complete to the best of my knowledge and belief.

B. L. Eiland
 Name **B. L. Eiland**

Position **Division Surveyor**

Company **Texaco Inc.**

Date **March 18, 1977**

I hereby certify that the well location shown on this plat was plotted from field notes of actual surveys made by me or under my supervision, and that the same is true and correct to the best of my knowledge and belief.

Date Surveyed

12/2/69

Registered Professional Engineer and/or Land Surveyor

B. L. Eiland
B. L. Eiland

Certificate No.

4386

NEW MEXICO OIL CONSERVATION COMMISSION
WELL LOCATION AND ACREAGE DEDICATION, AT

Form 1-1
Superseded 1-128
Effective 1-1-65

All distances must be from the outer boundaries of the Section.

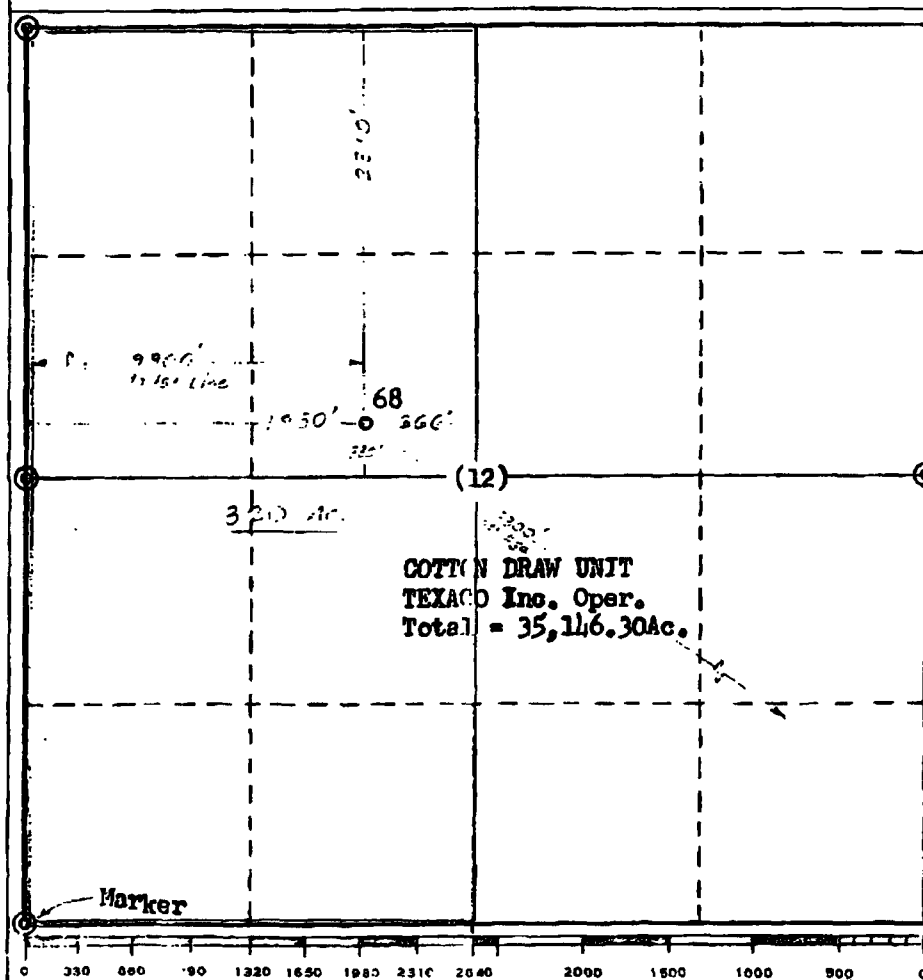
Operator TEXACO Inc.			Lease Cotton Draw Unit		Well No. 68
Unit Letter F	Section 12	Township 25 South	Range 31 East	County Eddy	
Actual Footage Location of Well:					
2310 feet from the North line and		1980 feet from the West line		Hwy. Sec. 12	
Ground Level Elev. 3434'	Producing Formation Stiluro - Devonian	Pool Paduca - Devonian Gas	Dedicated Acreage 320		

1. Outline the acreage dedicated to the subject well by colored pencil or hatchure marks on the plat below.
2. If more than one lease is dedicated to the well, outline each and identify the ownership thereof (both as to working interest and royalty).
3. If more than one lease of different ownership is dedicated to the well, have the interests of all owners been consolidated by communitization, unitization, force-pooling, etc?

☒ Yes ☐ No If answer is "yes," type of consolidation Unitization & Development Agreement

If answer is "no," list the owners and tract descriptions which have actually been consolidated. (Use reverse side of this form if necessary.)

No allowable will be assigned to the well until all interests have been consolidated (by communitization, unitization, forced-pooling, or otherwise) or until a non-standard unit, eliminating such interests, has been approved by the Commission.



CERTIFICATION

I hereby certify that the information contained herein is true and complete to the best of my knowledge and belief.

Name
J. J. Velten

Position
Division Civil Engineer

Company
TEXACO Inc.

Date
12/3/69

I hereby certify that the well location shown on this plat was plotted from field notes of actual surveys made by me or under my supervision, and that the same is true and correct to the best of my knowledge and belief.

Date Surveyed

12/2/69

Registered Professional Engineer
in Oil and Gas Surveying

J. J. Velten

Certificate No.
8174

TRANSACTION REPORT

P.01

AUG-17-2005 WED 03:17 PM

FOR:

RECEIVE

DATE	START	SENDER	RX TIME	PAGES	TYPE	NOTE	M#	DP
AUG-17	03:15 PM		1'47"	7	RECEIVE	OK		



2005 AUG 22 PM 1 07

Devon Energy Corporation
20 North Broadway
Oklahoma City, Oklahoma 73102-8260
Fax 405-552-8113

August 17, 2005

New Mexico Oil Conservation Division
1220 South St. Francis Drive
Santa Fe, NM 87505
Attn: Michael Stogner

30-015-20272

RE: Cotton Draw Unit #68
2310' FNL & 1980' FWL
Section 12-T25S-R31E
Eddy County, New Mexico

Gentlemen:

Devon Energy Production Company, L.P. ("Devon"), as Operator, has recompleted this well in the Atoka formation. This well was originally drilled to a total depth of 16,868' in June 1970. The well was plugged back and completed in the Morrow formation, was subsequently recompleted to the Wolfcamp formation in May 1977 and has been in a TA'd status since at least October 1994 prior to Devon's recompletion in the Atoka interval.

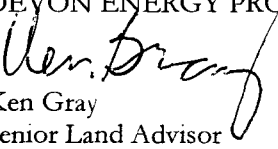
Inasmuch as the recompleted Atoka is located at an unorthodox location from that permitted by the current Statewide Pool Rules, Devon respectfully requests that the Commission administratively approve this application for an unorthodox location in accordance with Division Rule 104(F)(3). This unorthodox location affects the owners in the E/2 Section 12-T25S-R31E, being XTO Energy, Inc. and Devon. Devon and XTO Energy, Inc. are equal owners in this well and of all the affected offset acreage in this portion of the Cotton Draw Unit Area. Therefore, XTO Energy, Inc. has been given notice of this administrative application.

Attached for your review you will find a land plat reflecting Devon and XTO Energy, Inc as the only affected parties, porosity and resistivity logs reflecting the Atoka interval of interest, a State of New Mexico form C-102 for each of the previous recompletions

Feel free to contact the undersigned at (405) 552-4633 if there are any concerns or questions regarding this application.

Yours very truly,

DEVON ENERGY PRODUCTION COMPANY, L.P.


Ken Gray
Senior Land Advisor
KG\CDU 68 UL
Enclosure

NEW MEXICO OIL CONSERVATION COMMISSION
WELL LOCATION AND ACREAGE DEDICATION PLAT

Form C-102
Supersedes C-128
Effective 1-1-65

All distances must be from the outer boundaries of the Section.

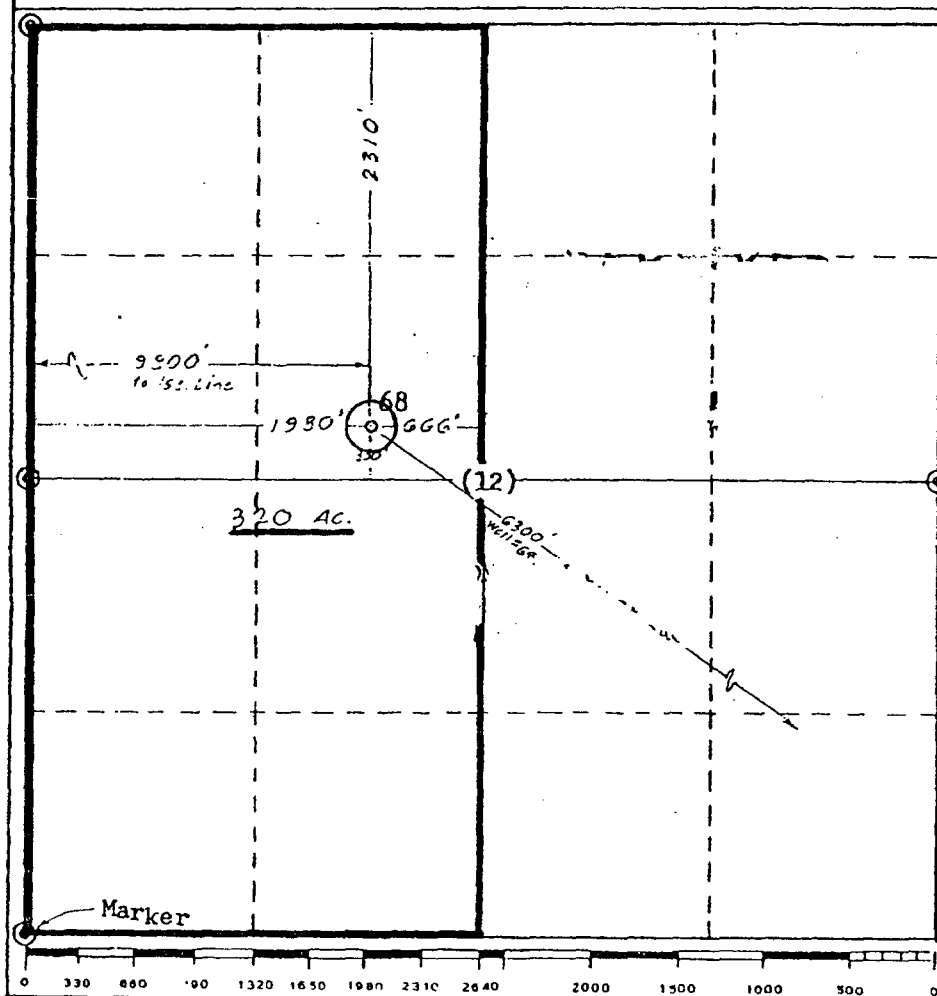
Devon Energy Production Company, LP			Lease Cotton Draw Unit		Well No. 68
Unit Letter F	Section 12	Township 25 South	Range 31 East	County Eddy	
Actual Footage Location of Well:					
2310 feet from the North line and		1980 feet from the West line		Sec. 12	
Ground Level Elev. 3434'	Producing Formation ATOKA	Pool ATOKA	Dedicated Acreage: 320 Acres		

1. Outline the acreage dedicated to the subject well by colored pencil or hachure marks on the plat below.
2. If more than one lease is dedicated to the well, outline each and identify the ownership thereof (both as to working interest and royalty).
3. If more than one lease of different ownership is dedicated to the well, have the interests of all owners been consolidated by communitization, unitization, force-pooling, etc?

☒ Yes ☐ No If answer is "yes," type of consolidation Unitization & Development Agreement

If answer is "no," list the owners and tract descriptions which have actually been consolidated. (Use reverse side of this form if necessary.)

No allowable will be assigned to the well until all interests have been consolidated (by communitization, unitization, forced-pooling, or otherwise) or until a non-standard unit, eliminating such interests, has been approved by the Commission.



CERTIFICATION

I hereby certify that the information contained herein is true and complete to the best of my knowledge and belief.

Ronnie Slack

Name

Ronnie Slack

Position

Engineering Technician

Company

Devon Energy Production Co

Date

8/4/05

I hereby certify that the well location shown on this plat was plotted from field notes of actual surveys made by me, or under my supervision, and that the same is true and correct to the best of my knowledge and belief.

Date Surveyed

12/2/69

Registered Professional Engineer and/or Land Surveyor

B. L. Eiland
B. L. Eiland

Certificate No.

4386

NEW MEXICO OIL CONSERVATION COMMISSION
WELL LOCATION AND ACREAGE DEDICATION PLAT

Form C-102
Supersedes C-128
Effective 1-1-65

All distances must be from the outer boundaries of the Section.

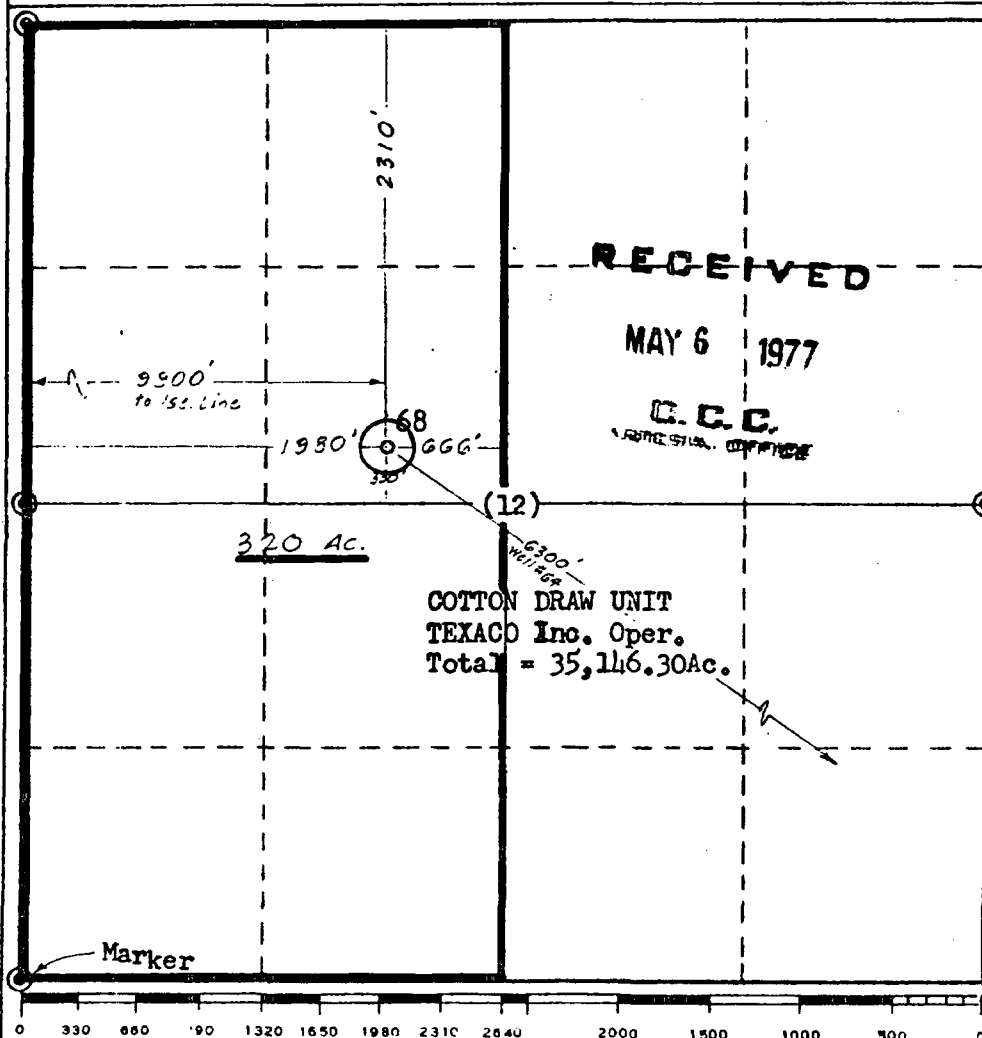
Operator TEXACO Inc.		Lease Cotton Draw Unit		Well No. 68
Unit Letter F	Section 12	Township 25 South	Range 31 East	County Eddy
Actual Footage Location of Well: 2310 feet from the North line and 1980 feet from the West line Sec. 12				
Ground Level Elev. 3434'	Producing Formation Wolfcamp (Gas)	Pool Wolfcamp (Gas)	Dedicated Acreage: 320 Acres	

1. Outline the acreage dedicated to the subject well by colored pencil or hatchure marks on the plat below.
2. If more than one lease is dedicated to the well, outline each and identify the ownership thereof (both as to working interest and royalty).
3. If more than one lease of different ownership is dedicated to the well, have the interests of all owners been consolidated by communitization, unitization, force-pooling, etc?

☒ Yes ☐ No If answer is "yes," type of consolidation Unitization & Development Agreement

If answer is "no," list the owners and tract descriptions which have actually been consolidated. (Use reverse side of this form if necessary.) _____

No allowable will be assigned to the well until all interests have been consolidated (by communitization, unitization, forced-pooling, or otherwise) or until a non-standard unit, eliminating such interests, has been approved by the Commission.



CERTIFICATION

I hereby certify that the information contained herein is true and complete to the best of my knowledge and belief.

B. L. Eiland
Name **B. L. Eiland**

Position **Division Surveyor**

Company **Texaco Inc.**

Date **March 18, 1977**

I hereby certify that the well location shown on this plat was plotted from field notes of actual surveys made by me or under my supervision, and that the same is true and correct to the best of my knowledge and belief.

Date Surveyed

12/2/69

Registered Professional Engineer and/or Land Surveyor

B. L. Eiland
B. L. Eiland

Certificate No.
4386

NEW MEXICO OIL CONSERVATION COMMISSION
WELL LOCATION AND ACREAGE DEDICATION, AT

Form 1-1
Supersedes C-128
Effective 1-1-65

All distances must be from the outer boundaries of the Section.

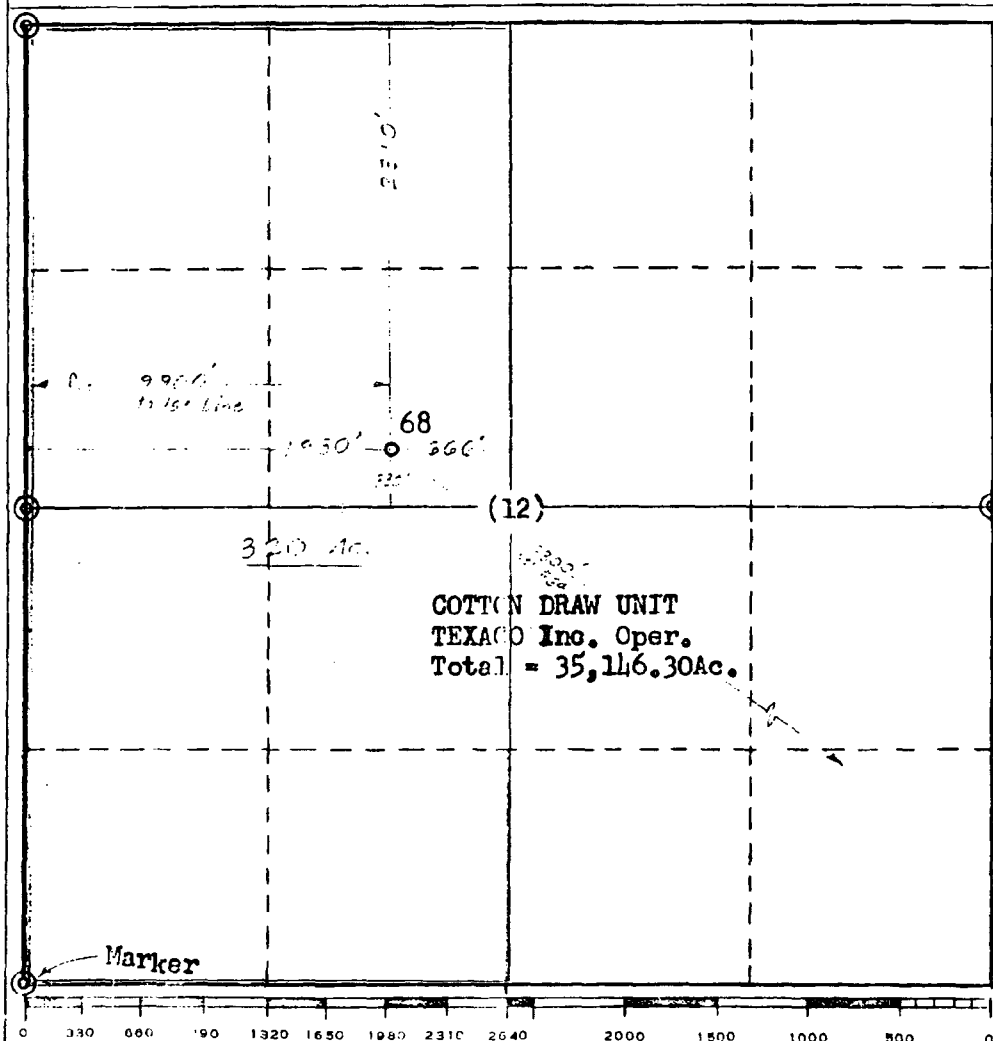
Operator TEXACO Inc.			Lease Cotton Draw Unit		Well No. 68
Unit Letter F	Section 12	Township 25 South	Range 31 East	County Eddy	
Actual Footage Location of Well:					
2310 feet from the North line and		1980 feet from the West line		Sec. 12	
Ground Level Elev. 3434'	Producing Formation <i>monow</i> Siluro - Devonian	Pool <i>monow</i> Paduca - Devonian Gas	Dedicated Acreage: 320		

1. Outline the acreage dedicated to the subject well by colored pencil or hachure marks on the plat below.
2. If more than one lease is dedicated to the well, outline each and identify the ownership thereof (both as to working interest and royalty).
3. If more than one lease of different ownership is dedicated to the well, have the interests of all owners been consolidated by communitization, unitization, force-pooling, etc?

☒ Yes ☐ No If answer is "yes," type of consolidation Unitization & Development Agreement

If answer is "no," list the owners and tract descriptions which have actually been consolidated. (Use reverse side of this form if necessary.)

No allowable will be assigned to the well until all interests have been consolidated (by communitization, unitization, forced-pooling, or otherwise) or until a non-standard unit, eliminating such interests, has been approved by the Commission.



CERTIFICATION

I hereby certify that the information contained herein is true and complete to the best of my knowledge and belief.

Name
J. J. Velten
Position
Division Civil Engineer
Company
TEXACO Inc.

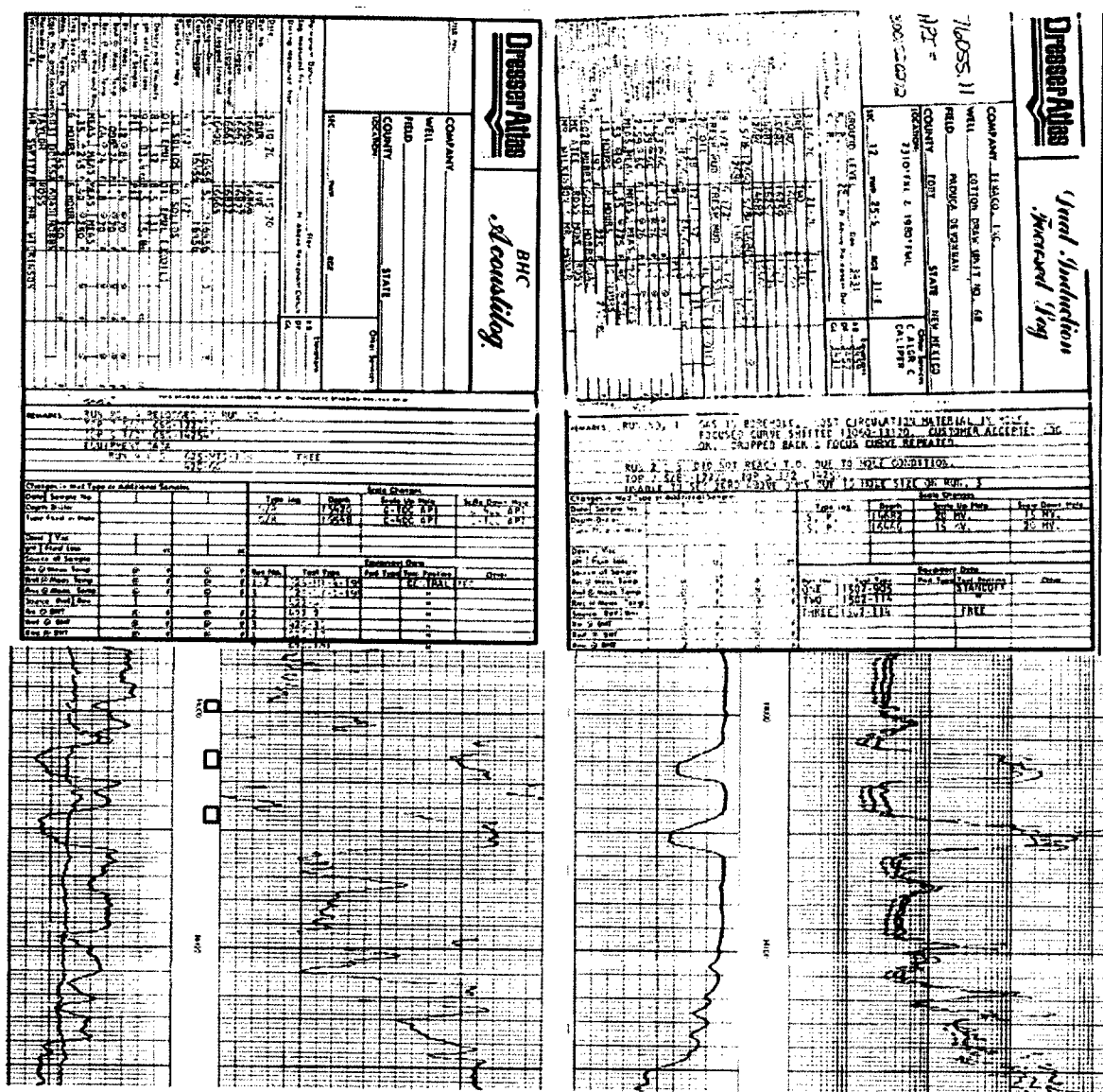
Date
12/3/69

I hereby certify that the well location shown on this plat was plotted from field notes of actual surveys made by me or under my supervision, and that the same is true and correct to the best of my knowledge and belief.

Date Surveyed
12/2/69

Registered Professional Engineer
in Oil and Land Surveying
J. J. Velten

Certificate No.
8174



devon

Eddy County New Mexico sec 12 T25S R31E
Logs from Cotton Draw Unit 68 over
Recent completion
Gross perf interval 13996-14047

Author:
DE O'Bright

Date:
17 August, 2005

Scale:
<Scale>