

ABOVE THIS LINE FOR DIVISION USE ONLY

**NEW MEXICO OIL CONSERVATION DIVISION**  
 - Engineering Bureau -  
 1220 South St. Francis Drive, Santa Fe, NM 87505



30-039-31181  
 NCRA State #7A  
 Logs Operating

**ADMINISTRATIVE APPLICATION CHECKLIST**

THIS CHECKLIST IS MANDATORY FOR ALL ADMINISTRATIVE APPLICATIONS FOR EXCEPTIONS TO DIVISION RULES AND REGULATIONS WHICH REQUIRE PROCESSING AT THE DIVISION LEVEL IN SANTA FE

**Application Acronyms:**

**[NSL-Non-Standard Location] [NSP-Non-Standard Proration Unit] [SD-Simultaneous Dedication]**  
**[DHC-Downhole Commingling] [CTB-Lease Commingling] [PLC-Pool/Lease Commingling]**  
**[PC-Pool Commingling] [OLS - Off-Lease Storage] [OLM-Off-Lease Measurement]**  
**[WFX-Waterflood Expansion] [PMX-Pressure Maintenance Expansion]**  
**[SWD-Salt Water Disposal] [IPI-Injection Pressure Increase]**  
**[EOR-Qualified Enhanced Oil Recovery Certification] [PPR-Positive Production Response]**

6786

- [1] **TYPE OF APPLICATION** - Check Those Which Apply for [A]  
 [A] Location - Spacing Unit - Simultaneous Dedication  
☒ NSL ☐ NSP ☐ SD
- Check One Only for [B] or [C]  
 [B] Commingling - Storage - Measurement  
☐ DHC ☐ CTB ☐ PLC ☐ PC ☐ OLS ☐ OLM
- [C] Injection - Disposal - Pressure Increase - Enhanced Oil Recovery  
☐ WFX ☐ PMX ☐ SWD ☐ IPI ☐ EOR ☐ PPR
- [D] Other: Specify \_\_\_\_\_
- [2] **NOTIFICATION REQUIRED TO:** - Check Those Which Apply, or ☐ Does Not Apply  
 [A] ☐ Working, Royalty or Overriding Royalty Interest Owners  
 [B] ☒ Offset Operators, Leaseholders or Surface Owner  
 [C] ☐ Application is One Which Requires Published Legal Notice  
 [D] ☐ Notification and/or Concurrent Approval by BLM or SLO  
U.S. Bureau of Land Management - Commissioner of Public Lands, State Land Office  
 [E] ☒ For all of the above, Proof of Notification or Publication is Attached, and/or,  
 [F] ☐ Waivers are Attached

- [3] **SUBMIT ACCURATE AND COMPLETE INFORMATION REQUIRED TO PROCESS THE TYPE OF APPLICATION INDICATED ABOVE.**

[4] **CERTIFICATION:** I hereby certify that the information submitted with this application for administrative approval is **accurate** and **complete** to the best of my knowledge. I also understand that **no action** will be taken on this application until the required information and notifications are submitted to the Division.

Note: Statement must be completed by an individual with managerial and/or supervisory capacity.

Austin Akers

Print or Type Name

Signature

Title

Date

VP of Land 2/22/2013  
 aakers@logosresourcesllc.com  
 e-mail Address



4001 N. Butler Blvd. Bldg 7101  
Farmington, NM 87401  
Phone: (832) 794-1355  
Fax: (303) 974-1767

RECEIVED OGD

2013 FEB 26 A 11: 03

Ms. Jami Bailey, Director  
New Mexico Oil Conservation Division  
1220 S. St. Francis Dr.  
Santa Fe, NM 87505

Sent Via Priority Mail 2/22/2013

**Re: Logos Operating, LLC  
Request for Administrative Approval  
Unorthodox Well Location  
Devils Fork Gallup Pool – 17610 (oil)  
Devil's Fork Mesa Verde Pool- 17620 (oil)  
NCRA #7A  
API No. – 30-039-31181  
1181' FNL and 666' FEL (vertical)  
NE/4NE/4 Section 16, T24N, R6W  
Rio Arriba County, New Mexico**

Dear Ms. Bailey:

On behalf of Logos Operating, LLC ("Logos") and pursuant to Division Rule 19.15.15.13 and the special pool rules governing the well location requirements for the Devils Fork Gallup Pool (17610- oil) and the standard rules governing the Devil's Fork Mesa Verde Pool- 17620 (oil), we request administrative approval an unorthodox well location for the NCRA #7A to be located 1181' FNL and 666' FEL of Section 16, T24N, R6W NMPM in Rio Arriba County. The NE/4 of Section 16 will be dedicated to the well.

The special pool rules for the Devils Fork Gallup Pool (oil) provide that wells shall be drilled not closer than 790' to any quarter section boundary and not closer than 330' to any interior quarter or quarter-quarter section line or subdivision inner boundary. The location proposed for this well is consequently unorthodox by approximately 124' to the West toward your spacing unit in the W/2 of Section 15, T24N, R6W, NMPM. The C-102 plat showing the proposed location for the well is attached hereto. The location is also unorthodox by approximetley 191' to the qtr-qtr section line dividing the NE/4NE/4 and SE/4SE/4 of Section 16.

Furthermore, the standard 40 acre oil spacing for the Devil's Fork Mesa Verde Pool- 17620 require a 330' setback from the outer qtr-qtr section boundaries that make up the spacing unit. The location proposed for this well is consequently unorthodox by approximetley 191' to the qtr-qtr section line dividing the NE/4NE/4 and SE/4SE/4 of Section 16.

Logos seeks an exception from the applicable well location rules for the following reasons: The surface of the lands in the immediate vicinity is predominated by mesas and arroyos. These circumstances are demonstrated by the attached, USGS topographic map (Exhibit C).

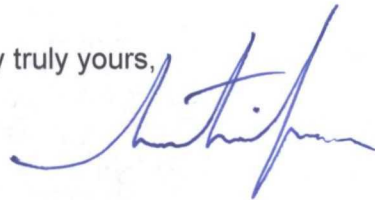
Pursuant to Order No. R-1641-A, a list of the operators in Section 16 as well as the affected parties to the east in Section 15 is attached hereto along with certification that all operators within the section and all offset operators have been notified. Furthermore, please

note that Logos Resources LLC operates the Devil's Fork Gallup and Mesa Verde spacing unit in the entirety of Section 16.

The Division's Administrative Application Checklist is enclosed.

Thank you for your consideration of this request. Should more information be required, please do not hesitate to contact me at 303-550-1877.

Very truly yours,

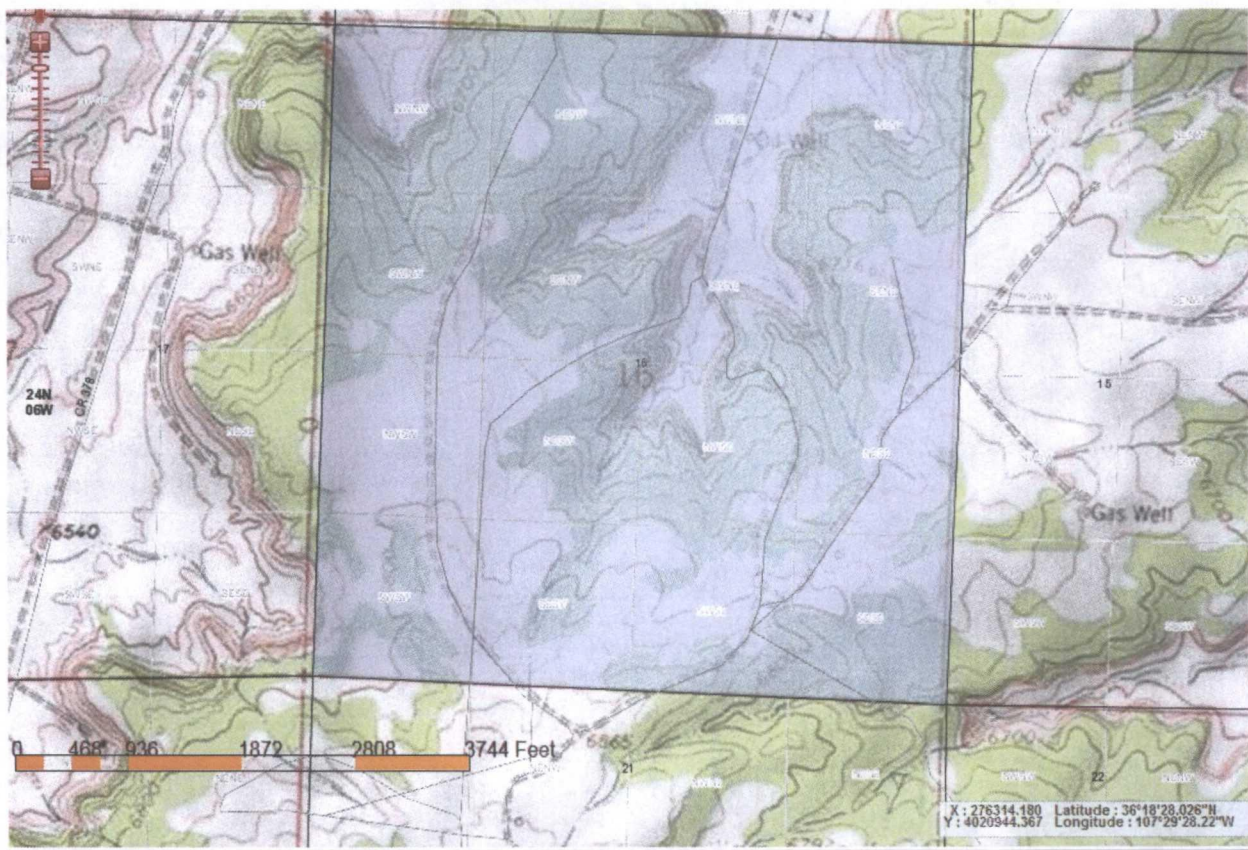


John Austin Akers

Vice President of Land

Enclosures:

USGS Topographical Map  
List of Operators in the Section  
Exhibit A - APD  
Exhibit B - C-102  
Administrative Application Checklist



List of Operators encroached upon (offset) or within the same section (S16 and NW/4 Section 15-T24N, R6W)- NCRA 7A

BENSON-MONTIN-GREER DRILLING CORP – Notice mailed 2/21/2013  
4900 College Blvd.  
Farmington, NM 87402

BURLINGTON RESOURCES OIL & GAS COMPANY LP - Notice mailed 2/21/2013  
3401 E. 30TH STREET  
FARMINGTON, NM 87402

HUNTINGTON ENERGY, LLC- Notice mailed 2/21/2013  
908 NW 71ST  
OKLAHOMA CITY, OK 73116

*End*

**District I**

1625 N. French Dr., Hobbs, NM 88240  
Phone:(575) 393-6161 Fax:(575) 393-0720

**District II**

811 S. First St., Artesia, NM 88210  
Phone:(575) 748-1283 Fax:(575) 748-9720

**District III**

1000 Rio Brazos Rd., Aztec, NM 87410  
Phone:(505) 334-6178 Fax:(505) 334-6170

**District IV**

1220 S. St Francis Dr., Santa Fe, NM 87505  
Phone:(505) 476-3470 Fax:(505) 476-3462

**State of New Mexico****Energy, Minerals and Natural Resources****Oil Conservation Division****1220 S. St Francis Dr.****Santa Fe, NM 87505**

Form C-101  
August 1, 2011

Permit 162913

**APPLICATION FOR PERMIT TO DRILL, RE-ENTER, DEEPEN, PLUGBACK, OR ADD A ZONE**

|   |                                |                               |
|---|--------------------------------|-------------------------------|
| 1. Operator Name and Address<br>LOGOS OPERATING, LLC<br>4001 N. Butler, Bldg 7101<br>Farmington, NM 87401 |                                | 2. OGRID Number<br>289408     |
|   |                                | 3. API Number<br>30-039-31181 |
| 4. Property Code<br>310176  | 5. Property Name<br>NCRA STATE | 6. Well No.<br>007A           |

**7. Surface Location**

| UL - Lot | Section | Township | Range | Lot Idn | Feet From | N/S Line | Feet From | E/W Line | County     |
|----------|---------|----------|-------|---------|-----------|----------|-----------|----------|------------|
|          | 16      | 24N      | 06W   | A       | 1181      | N        | 666       | E        | RIO ARRIBA |

**8. Proposed Bottom Hole Location**

| UL - Lot | Section | Township | Range | Lot Idn | Feet From | N/S Line | Feet From | E/W Line | County |
|----------|---------|----------|-------|---------|-----------|----------|-----------|----------|--------|
|          | 0       |          |       |         | 0         |          | 0         |          |        |

**9. Pool Information**

|                                 |       |
|---------------------------------|-------|
| DEVILS FORK MESAVERDE           | 17620 |
| DEVILS FORK GALLUP (ASSOCIATED) | 17610 |

**Additional Well Information**

|                           |                            |  |                         |                                    |
|---------------------------|----------------------------|--|-------------------------|------------------------------------|
| 11. Work Type<br>New Well | 12. Well Type<br>OIL       | 13. Cable/Rotary                       | 14. Lease Type<br>State | 15. Ground Level Elevation<br>6697 |
| 16. Multiple<br>Y         | 17. Proposed Depth<br>6396 | 18. Formation<br>Gallup Formation      | 19. Contractor          | 20. Spud Date<br>4/1/2013          |
| Depth to Ground water     |                            | Distance from nearest fresh water well |                         | Distance to nearest surface water  |

**21. Proposed Casing and Cement Program**

| Type | Hole Size | Casing Type | Casing Weight/ft | Setting Depth | Sacks of Cement | Estimated TOC |
|------|-----------|-------------|------------------|---------------|-----------------|---------------|
| Surf | 12.25     | 8.625       | 32               | 320           | 225             | 0             |
| Prod | 7.875     | 5.5         | 15.5             | 6396          | 1060            | 0             |

**Casing/Cement Program: Additional Comments**

Note: Cement volumes will be adjusted based on actual conditions. Surface casing: 8-5/8" - Use 225 sx (266 cu. ft.) of Type V with 2% CaCl<sub>2</sub> and ¼ #/sk celloflake (Yield = 1.18 cu. ft./sk; slurry weight = 15.6 PPG). 100% excess to circulate cement to surface. WOC 12 hours. Pressure test surface casing to 1500 psi. Production Casing: 5-1/2" - Before cementing circulate hole with at least 1-1/2 hole volumes of mud. Precede cement with 30 bbls of fresh water. 1st Stage: Lead with 260 sx (458 cu.ft.) of CI "B" 65/35 poz with 6% gel, 1% CaCl<sub>2</sub>, 4% phenoseal, and ¼ #/sx celloflake (Yield = 1.76 cu. ft./sk; slurry weight = 12.8 PPG). Tail with 100 sx (146 cu.ft.) of CI "B" 50/50 poz with 0.15% dispersant, 1% CaCl<sub>2</sub> and ¼ #/sk. celloflake. (Yield = 1.46 cu. ft./sk; slurry weight = 13.0 PPG). 2nd Stage: Precede cement with 20 bbls of water. Lead with 600 sx (1056 cu.ft) CI "B" 65/35 poz with 6% gel, 1% CaCl<sub>2</sub>, and ¼ #/sx celloflake (Yield = 1.76 cu. ft./sk; slurry weight = 12.8 PPG.) T

**22. Proposed Blowout Prevention Program**

| Type      | Working Pressure | Test Pressure | Manufacturer |
|-----------|------------------|---------------|--------------|
| DoubleRam | 2000             | 1500          |              |

|  |        |                           |                  |
|--|--------|---------------------------|------------------|
| 23. I hereby certify that the information given above is true and complete to the best of my knowledge and belief.<br>I further certify I have complied with 19.15.14.9 (A) NMAC <input type="checkbox"/> and/or 19.15.14.9 (B) NMAC <input type="checkbox"/> if applicable. |        | OIL CONSERVATION DIVISION |                  |
| Signature:   |        | Approved By:              |                  |
| Printed Name:  |        | Title:                    |                  |
| Title:   |        | Approved Date:            | Expiration Date: |
| Email Address:   |        |                           |                  |
| Date:  | Phone: |                           |                  |

**District I**

1625 N. French Dr., Hobbs, NM 88240  
Phone:(575) 393-6161 Fax:(575) 393-0720

**District II**

811 S. First St., Artesia, NM 88210  
Phone:(575) 748-1283 Fax:(575) 748-9720

**District III**

1000 Rio Brazos Rd., Aztec, NM 87410  
Phone:(505) 334-6178 Fax:(505) 334-6170

**District IV**

1220 S. St Francis Dr., Santa Fe, NM 87505  
Phone:(505) 476-3470 Fax:(505) 476-3462

**State of New Mexico****Energy, Minerals and Natural Resources****Oil Conservation Division****1220 S. St Francis Dr.****Santa Fe, NM 87505**

Form C-102

August 1, 2011

Permit 162913

B

**WELL LOCATION AND ACREAGE DEDICATION PLAT**

|                            |  |                                       |
|----------------------------|--|---------------------------------------|
| 1. API Number              | 2. Pool Code<br>17620                    | 3. Pool Name<br>DEVILS FORK MESAVERDE |
| 4. Property Code<br>310176 | 5. Property Name<br>NCRA STATE           | 6. Well No. ,<br>007A                 |
| 7. OGRID No.<br>289408     | 8. Operator Name<br>LOGOS OPERATING, LLC | 9. Elevation<br>6697                  |

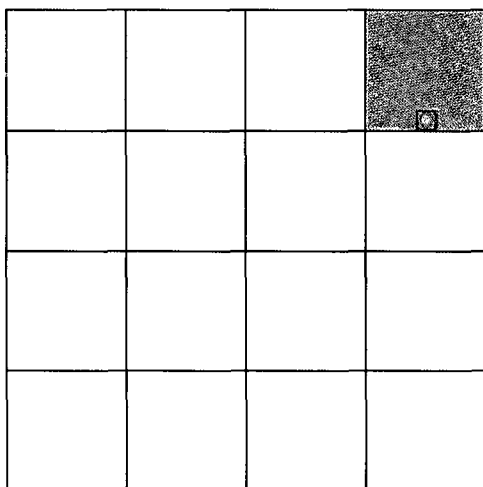
**10. Surface Location**

| UL - Lot | Section | Township | Range | Lot Idn | Feet From | N/S Line | Feet From | E/W Line | County     |
|----------|---------|----------|-------|---------|-----------|----------|-----------|----------|------------|
| A        | 16      | 24N      | 06W   | A       | 1181      | N        | 666       | E        | RIO ARRIBA |

**11. Bottom Hole Location If Different From Surface**

| UL - Lot                     | Section | Township            | Range | Lot Idn                | Feet From | N/S Line      | Feet From | E/W Line | County     |
|------------------------------|---------|---------------------|-------|------------------------|-----------|---------------|-----------|----------|------------|
| A                            | 16      | 24N                 | 06W   | a                      | 1181      | N             | 666       | E        | RIO ARRIBA |
| 12. Dedicated Acres<br>40.00 |         | 13. Joint or Infill |       | 14. Consolidation Code |           | 15. Order No. |           |          |            |

**NO ALLOWABLE WILL BE ASSIGNED TO THIS COMPLETION UNTIL ALL INTERESTS HAVE BEEN CONSOLIDATED OR A NON-STANDARD UNIT HAS BEEN APPROVED BY THE DIVISION**

**OPERATOR CERTIFICATION**

*I hereby certify that the information contained herein is true and complete to the best of my knowledge and belief, and that this organization either owns a working interest or unleased mineral interest in the land including the proposed bottom hole location(s) or has a right to drill this well at this location pursuant to a contract with an owner of such a mineral or working interest, or to a voluntary pooling agreement or a compulsory pooling order heretofore entered by the division.*

E-Signed By:

Title:

Date:

**SURVEYOR CERTIFICATION**

*I hereby certify that the well location shown on this plat was plotted from field notes of actual surveys made by me or under my supervision, and that the same is true and correct to the best of my belief.*

Surveyed By: David Russell

Date of Survey: 12/11/2012

Certificate Number: 10201

**District I**

1625 N. French Dr., Hobbs, NM 88240  
Phone:(575) 393-6161 Fax:(575) 393-0720

**District II**

811 S. First St., Artesia, NM 88210  
Phone:(575) 748-1283 Fax:(575) 748-9720

**District III**

1000 Rio Brazos Rd., Aztec, NM 87410  
Phone:(505) 334-6178 Fax:(505) 334-6170

**District IV**

1220 S. St Francis Dr., Santa Fe, NM 87505  
Phone:(505) 476-3470 Fax:(505) 476-3462

**State of New Mexico****Energy, Minerals and Natural Resources****Oil Conservation Division****1220 S. St Francis Dr.****Santa Fe, NM 87505**

Form C-102  
August 1, 2011

Permit 162913

**WELL LOCATION AND ACREAGE DEDICATION PLAT**

|                            |  |   |
|----------------------------|--|---|
| 1. API Number              | 2. Pool Code<br>17610                    | 3. Pool Name<br>DEVILS FORK GALLUP (ASSOCIATED) |
| 4. Property Code<br>310176 | 5. Property Name<br>NCRA STATE           | 6. Well No.<br>007A                             |
| 7. OGRID No.<br>289408     | 8. Operator Name<br>LOGOS OPERATING, LLC | 9. Elevation<br>6697                            |

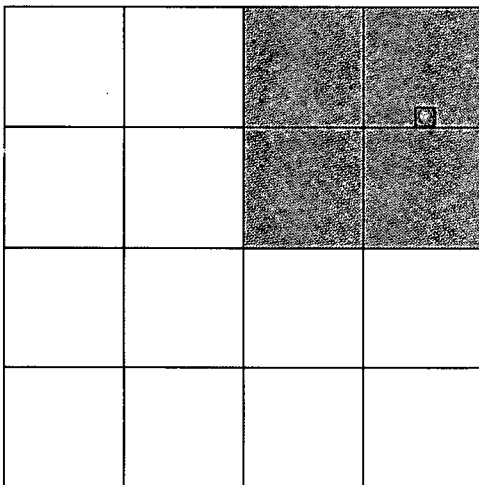
**10. Surface Location**

|               |               |                 |              |              |                   |               |                  |               |                      |
|---------------|---------------|-----------------|--------------|--------------|-------------------|---------------|------------------|---------------|----------------------|
| UL - Lot<br>A | Section<br>16 | Township<br>24N | Range<br>06W | Lot Idn<br>A | Feet From<br>1181 | N/S Line<br>N | Feet From<br>666 | E/W Line<br>E | County<br>RIO ARRIBA |
|---------------|---------------|-----------------|--------------|--------------|-------------------|---------------|------------------|---------------|----------------------|

**11. Bottom Hole Location If Different From Surface**

|                               |               |                     |              |                        |                   |               |                  |               |                      |
|-------------------------------|---------------|---------------------|--------------|------------------------|-------------------|---------------|------------------|---------------|----------------------|
| UL - Lot<br>A                 | Section<br>16 | Township<br>24N     | Range<br>06W | Lot Idn<br>A           | Feet From<br>1181 | N/S Line<br>N | Feet From<br>666 | E/W Line<br>E | County<br>RIO ARRIBA |
| 12. Dedicated Acres<br>160.00 |               | 13. Joint or Infill |              | 14. Consolidation Code |                   | 15. Order No. |                  |               |                      |

**NO ALLOWABLE WILL BE ASSIGNED TO THIS COMPLETION UNTIL ALL INTERESTS HAVE BEEN CONSOLIDATED OR A NON-STANDARD UNIT HAS BEEN APPROVED BY THE DIVISION**

**OPERATOR CERTIFICATION**

*I hereby certify that the information contained herein is true and complete to the best of my knowledge and belief, and that this organization either owns a working interest or unleased mineral interest in the land including the proposed bottom hole location(s) or has a right to drill this well at this location pursuant to a contract with an owner of such a mineral or working interest, or to a voluntary pooling agreement or a compulsory pooling order heretofore entered by the division.*

E-Signed By:

Title:

Date:

**SURVEYOR CERTIFICATION**

*I hereby certify that the well location shown on this plat was plotted from field notes of actual surveys made by me or under my supervision, and that the same is true and correct to the best of my belief.*

Surveyed By: David Russell

Date of Survey: 12/11/2012

Certificate Number: 10201



## Permit Comments

**Operator:** LOGOS OPERATING, LLC , 289408

**Well:** NCRA STATE #007A

**API:**

**There are no comments for this permit**

**Brooks, David K., EMNRD**

---

**From:** Brooks, David K., EMNRD  
**Sent:** Monday, March 04, 2013 11:11 AM  
**To:** aakers@logosresourcesllc.com  
**Subject:** NCRA State #7A; NSL Application

Dear Mr. Akers

We are in receipt of the referenced application.

However, in order to process this application, we need a statement as described in Rule 19.15.15.13.D NMAC indicating that the notice given to the offsetting operator complied with the requirements of that rule. A copy of your letter of notification will suffice if the letter indicates that you have complied with the requirements of 19.15.15.13.D and it contains the required admonition that any objection must be filed with OCD within 20 days after the date that OCD received the application.

If you have not complied with 19.15.15.13.D, a new notice will be required, and the 20-day time will run from the date the new notice is sent. Alternatively, a waiver signed by the noticed party would suffice.

Sincerely

David K. Brooks  
Legal Examiner  
505-476-3450

**Brooks, David K., EMNRD**

---

**From:** John Austin Akers <aakers@logosresourcesllc.com>  
**Sent:** Monday, March 04, 2013 10:03 AM  
**To:** Brooks, David K., EMNRD  
**Subject:** NCRA State #7A; NSL Application  
**Attachments:** Logos03042013\_00001.pdf; NCRA 7A NSL Letter logos 8.docx

Good morning David,

In anticipation of a similar requirement for proof of notice on the Logos NCRA 7a NSL application as received for the NCRA 6 this morning, I have attached the notification letter sent for the Logos NCRA No. 7a. This letter was sent via U.S. certified mail (all stubs attached) and were delivered on or before February 25, 2013. Please let me know if you require any additional information on this.

Thank you

John "Austin" Akers  
Vice President of Land  
Logos Resources, LLC  
Phone: 303-550-1877

---

**From:** Brooks, David K., EMNRD [<mailto:david.brooks@state.nm.us>]  
**Sent:** Monday, March 04, 2013 10:42 AM  
**To:** John Austin Akers  
**Subject:** NCRA State #5; NSL Application

Dear Mr. Akers

We are in receipt of the referenced application.

However, in order to process this application, we need a statement as described in Rule 19.15.15.13.D NMAC indicating that the notice given to the offsetting operator complied with the requirements of that rule. A copy of your letter of notification will suffice if the letter indicates that you have complied with the requirements of 19.15.15.13.D and it contains the required admonition that any objection must be filed with OCD within 20 days after the date that OCD received the application.

If you have not complied with 19.15.15.13.D, a new notice will be required, and the 20-day time will run from the date the new notice is sent. Alternatively, a waiver signed by the noticed party would suffice.

Sincerely

David K. Brooks  
Legal Examiner  
505-476-3450

The information contained in this email and any attachments is confidential and may be subject to copyright or other intellectual property protection. If you are not the intended recipient, you are not authorized to use or disclose this information, and we request that you notify us by reply mail or telephone and delete the original message from your mail system.

## SENDER: COMPLETE THIS SECTION

- Complete Items 1, 2, and 3. Also complete item 4 if Restricted Delivery is desired.
- Print your name and address on the reverse so that we can return the card to you.
- Attach this card to the back of the mailpiece, or on the front if space permits.

1. Article Addressed to:

BMG Corp  
4900 College Blvd  
Farmington, NM 87402

NCRA 6 NSL

2. Article Number

(Transfer from service label)

7012 2210 0000 2038 7337

PS Form 3811, August 2001

## COMPLETE THIS SECTION ON DELIVERY

A. Signature

X *Jasmine Wiggins*☐ Agent☐ Addressee

B. Received by (Printed Name)

Jasmine Wiggins

C. Date of Delivery

2-25-13

D. Is delivery address different from item 1?

☐ Yes

If YES, enter delivery address below:

☐ No

3. Service Type

☒ Certified Mail☐ Express Mail☐ Registered☐ Return Receipt for Merchandise☐ Insured Mail☐ C.O.D.

4. Restricted Delivery? (Extra Fee)

☐ Yes

## SENDER: COMPLETE THIS SECTION

- Complete Items 1, 2, and 3. Also complete item 4 if Restricted Delivery is desired.
- Print your name and address on the reverse so that we can return the card to you.
- Attach this card to the back of the mailpiece, or on the front if space permits.

1. Article Addressed to:

Burlington Resources  
3401 30th St  
Farmington, NM 87402

NCRA 7A NSL

2. Article Number

(Transfer from service label)

7012 2210 0000 2038 7344

PS Form 3811, August 2001

Domestic Return Receipt

2ACPRI-03-Z-0985

## COMPLETE THIS SECTION ON DELIVERY

A. Signature

X *Greg Goss*☐ Agent☐ Addressee

B. Received by (Printed Name)

Greg Goss

C. Date of Delivery

2/25/13

D. Is delivery address different from item 1?

☐ Yes

If YES, enter delivery address below:

☐ No

3. Service Type

☒ Certified Mail☐ Express Mail☐ Registered☐ Return Receipt for Merchandise☐ Insured Mail☐ C.O.D.

4. Restricted Delivery? (Extra Fee)

☐ Yes

## SENDER: COMPLETE THIS SECTION

- Complete items 1, 2, and 3. Also complete item 4 if Restricted Delivery is desired.
- Print your name and address on the reverse so that we can return the card to you.
- Attach this card to the back of the mailpiece, or on the front if space permits.

1. Article Addressed to:

Huntington Energy  
408 NW 71st St.  
Oklahoma City, OK  
73116

NCRA 7A

2. Article Number

(Transfer from service label)

7012 2210 0000 2038 7351

PS Form 3811, August 2001

Domestic Return Receipt

2ACPRI-03-Z-0985

## COMPLETE THIS SECTION ON DELIVERY

A. Signature

X *Paula Gibson*☐ Agent☐ Addressee

B. Received by (Printed Name)

Paula Gibson

C. Date of Delivery

D. Is delivery address different from item 1?

☐ Yes

If YES, enter delivery address below:

☐ No

3. Service Type

☒ Certified Mail☐ Express Mail☐ Registered☐ Return Receipt for Merchandise☐ Insured Mail☐ C.O.D.

4. Restricted Delivery? (Extra Fee)

☐ Yes



4001 N. Butler Blvd. Bldg 7101  
Farmington, NM 87401  
Phone: (832) 794-1355  
Fax: (303) 974-1767

February 20, 2013

BURLINGTON RESOURCES OIL &  
GAS COMPANY LP  
3401 E. 30TH STREET  
FARMINGTON, NM 87402

**Sent Via Certified Mail**

HUNTINGTON ENERGY, LLC  
908 NW 71ST  
OKLAHOMA CITY, OK 73116

BENSON-MONTIN-GREER DRILLING  
CORP  
4900 COLLEGE BLVD.  
FARMINGTON, NM 87402

**Re: Logos Operating, LLC  
Request for Administrative Approval  
Unorthodox Well Location  
Devils Fork Gallup Pool – 17610 (oil)  
NCRA #7A  
API No. – Not yet issued  
1181' FNL and 666' FEL (vertical)  
NE/4NE/4 Section 16, T24N, R6W  
Rio Arriba County, New Mexico**

To whom it may concern:

On behalf of Logos Operating, LLC ("Logos") and pursuant to Division Rule 19.15.15.13 and the special pool rules governing the well location requirements for the Devils Fork Gallup Pool (17610- oil), we hereby notify you of our intent to drill the NCRA #7A well on unorthodox well location for the NCRA #7A to be located 1181' FNL and 666' FEL of Section 16, T24N, R6W NMPM in Rio Arriba County. The NE/4 of Section 16 will be dedicated to the well.

The special pool rules for the Devils Fork Gallup Pool (oil) provide that wells shall be drilled not closer than 790' to any quarter section boundary and not closer than 330' to any interior quarter or quarter-quarter section line or subdivision inner boundary. The location proposed for this well is consequently unorthodox by approximately 124' to the West toward your spacing unit in the W/2 of Section 15, T24N, R6W, NMPM. The C-102 plat showing the proposed location for the well is attached hereto. The location is also

{00436106-2}



unorthodox by approximately 191' to the qtr-qtr section line dividing the NE/4NE/4 and SE/4SE/4 of Section 16.

Logos seeks an exception from the applicable well location rules for the following reasons: The surface of the lands in the immediate vicinity is predominated by mesas and arroyos. These circumstances are demonstrated by the attached, USGS topographic map.

Should you have any objections to this application, you must file an objection in writing to the Santa Fe NMOCD office within 20 days of your receipt of this letter. We request that prior to filing any objection, you contact us so that we may explain the benefits of this project and answer any questions you may have.

Very truly yours,

John Austin Akers  
Vice President of Land

Enclosures:

USGS Topographical Map  
C-102

