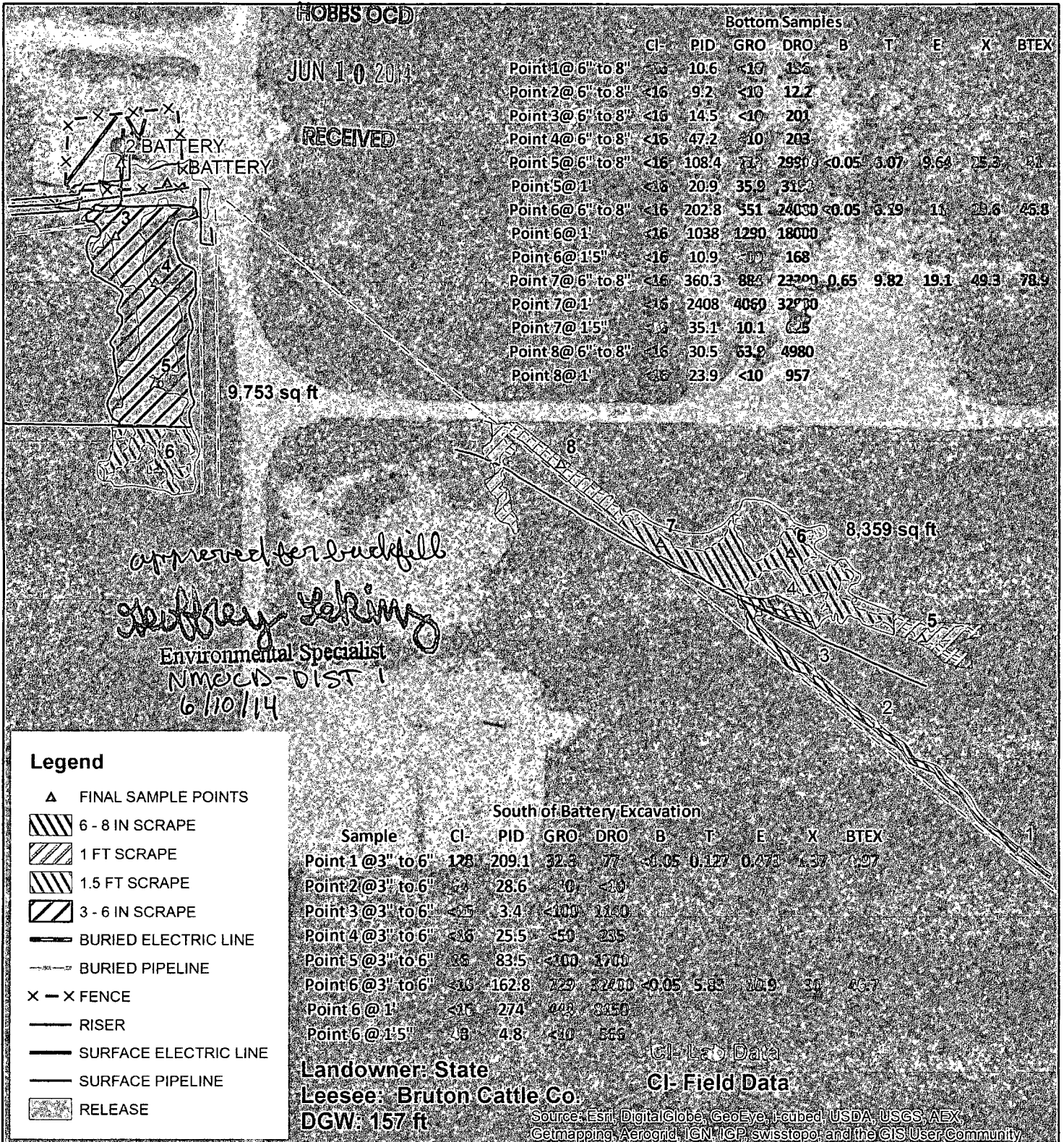


Excavation Data

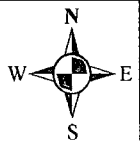
6/10



RECS
RICE ENVIRONMENTAL
CONSULTING & SAFETY

CONOCOPHILLIPS HARRY LEONARD STATION 6

Legals: UL/J sec. 22
T-21-S R-36-E
LEA COUNTY, NM



0 70 140
Feet

GPS date: 3/5/14 CF, KS 3/12/14
Drawing date: 5/30/14
Drafted by: L. Weinheimer

JUN 10 2014