

Basin Environmental Service Technologies, LLC

3100 Plains Highway
P. O. Box 301
Lovington, New Mexico 88260
jwlowry@basinenv.com

Office: (575) 396-2378 Fax: (575) 396-1429



REMEDIATION SUMMARY AND SITE CLOSURE REQUEST

BOPCO, LP
JAMES RANCH UNIT #21 SWD AQUILA 8 DIESEL RELEASE
Eddy County, New Mexico
Unit Letter "G" (SW/NE), Section 21, Township 22 South, Range 30 East
Latitude 32.381464° North, Longitude 103.883210° West
NMOCD Reference #2RP-2285

Prepared For:

BOPCO, LP
522 W. Mermod, Suite 704
Carlsbad, New Mexico 88220

Prepared By:

Basin Environmental Service Technologies, LLC
3100 Plains Highway
Lovington, New Mexico 88260

June 2014

NM OIL CONSERVATION
ARTESIA DISTRICT

JUL 01 2014

RECEIVED

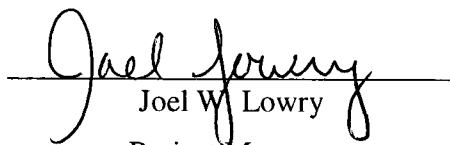

Joel W. Lowry
Project Manager

TABLE OF CONTENTS

| | |
|---|---|
| 1.0 INTRODUCTION & BACKGROUND INFORMATION..... | 1 |
| 2.0 NMOCD SITE CLASSIFICATION..... | 1 |
| 3.0 SUMMARY OF SOIL REMEDIATION ACTIVITIES..... | 2 |
| 4.0 QA/QC PROCEDURES..... | 3 |
| 4.1 Soil Sampling..... | 3 |
| 4.2 Decontamination of Equipment..... | 3 |
| 4.3 Laboratory Protocol..... | 3 |
| 5.0 SITE CLOSURE REQUEST..... | 3 |
| 6.0 LIMITATIONS..... | 4 |
| 7.0 DISTRIBUTION..... | 5 |

FIGURES

Figure 1 – Site Location Map

Figure 2 – Site & Sample Location Map

TABLES

Table 1 – Concentrations of Benzene, BTEX & TPH in Soil

Table 2 – Waste Characterization Data

APPENDICES

Appendix A – Release Notification and Corrective Action (Form C-141)

Appendix B – Photographs

Appendix C – Laboratory Analytical Reports

1.0 INTRODUCTION & BACKGROUND INFORMATION

Basin Environmental Service Technologies, LLC (Basin), on behalf of BOPCO, LP (BOPCO), has prepared this *Remediation Summary and Site Closure Request* for the release site known as James Ranch Unit #21 SWD Aquila 8 Diesel Release (JRU #21 SWD Diesel Release). The legal description of the release site is Unit Letter "G" (SW/NE), Section 21, Township 22 South, Range 30 East, in Eddy County, New Mexico. The geographic coordinates of the release site are 32.381464° North latitude and 103.883210° West longitude. The property affected by the release is owned by the United States Department of the Interior - Bureau of Land Management (BLM). A "Site Location Map" is provided as Figure 1.

On January 13, 2014, BOPCO discovered a release had occurred on the JRU #21 SWD Well Pad. A one-inch (1") transfer hose from the diesel bulk storage tank was laid on the ground unattended and while the valve was left open, resulting in the release of approximately one thousand (1,000) gallons of diesel fuel. The New Mexico Oil Conservation Division (NMOCD)-Artesia District Office, New Mexico Environment Department (NMED) and BLM were notified of the incident immediately. The "Release Notification and Corrective Action" (Form C-141) indicated the release affected an area on the well pad measuring approximately fifty feet (50') by fifty feet (50') and collected in approximately one hundred and eighty-five linear feet (185') of containment ditch that had been dug around the tanks and generators. During initial response activities, the valve was closed and approximately four hundred (400) gallons of diesel were recovered. The Form C-141 is provided as Appendix A. General photographs of the release site are provided as Appendix B.

On April 20, 2014, the drilling rig and associated tanks and generators were moved off location. Beginning April 29, 2014, heavily impacted material was scraped up and stockpiled on-site atop an impermeable liner, pending final disposition.

On May 2, 2014, a five-point composite waste characterization sample (Composite 1) was collected from the stockpiled material and submitted to the laboratory for analysis of benzene, toluene, ethylbenzene, and xylenes (BTEX), and arsenic, silver, barium, cadmium, chromium, lead, mercury and selenium (RCRA 8 Metals) using toxicity characteristic leaching procedure (TCLP). Laboratory analytical results indicated all RCRA 8 Metal concentrations were less than the appropriate laboratory method detection limit (MDL), with the exception of barium, which exhibited a concentration of 0.518 ppm. In addition, soil sample Composite 1 was also analyzed for Reactivity, Corrosivity and Ignitability (RCI), which indicated the reactive sulfide concentrations was 0.0100 ppm, the reactive cyanide concentration was less than the appropriate laboratory MDL, the pH was 7.41 and ignitability was greater than 140 degrees Fahrenheit. Soil sample Composite 1 was also analyzed for concentrations of TPH, which were determined to be 9,088 ppm. A summary of "Waste Characterization Data" is provided as Table 2.

2.0 NMOCD SITE CLASSIFICATION

A search of the New Mexico Water Rights Reporting System (NMWRRS) database maintained by the New Mexico Office of the State Engineer (NMOSE) indicated information was unavailable for Section 21, Township 22 South, Range 30 East. A depth to groundwater reference map utilized by the NMOCD indicates groundwater should be encountered at approximately ninety (90) to one hundred feet (100') below ground surface (bgs). Based on the NMOCD ranking system, ten (10) points will be assigned to the site as a result of this criterion.

A search of the NMWRRS database indicated there are no water wells within 1,000 feet of the release. Based on the NMOCD ranking system, zero (0) points will be assigned to the site as a result of this criterion.

There are no surface water bodies within 1,000 feet of the release. Based on the NMOCD ranking system, zero (0) points will be assigned to the site as a result of this criterion.

NMOCD guidelines indicate the JRU #21 SWD Diesel Release site has an initial ranking score of ten (10) points. The soil remediation levels for a site with a ranking score of ten (10) points are as follows:

- Benzene – 10 mg/Kg (ppm)
- BTEX – 50 mg/Kg (ppm)
- TPH – 1,000 mg/Kg (ppm)

3.0 SUMMARY OF SOIL REMEDIATION ACTIVITIES

On May 5, 2014, Basin began excavating impacted soil at the release site. The floor and sidewalls of the excavation were advanced until field tests suggested concentrations of BTEX and TPH were below NMOCD regulatory standards. Excavated soil was stockpiled on-site atop an impermeable liner, pending final disposition.

On May 6, 2014, twelve (12) confirmation soil samples (SSW #1, SSW #2, SESW, NESW, Floor #1, Floor #2, Floor #3, Floor #4, Floor #5, PA-SSW, PA-ESW and PA-WSW) were collected from the excavation floor and sidewalls and submitted to the laboratory for analysis of TPH concentrations. Laboratory analytical results indicated TPH concentrations were less than the laboratory MDL in each of the submitted soil samples, with the exception of soil samples Floor #1, Floor #2 and Floor #1, which exhibited TPH concentrations of 556 ppm, 335 ppm and 127 ppm, respectively. Soil sample Floor #1 was also analyzed for concentrations of BTEX, which were determined to be 0.432 ppm. A summary of “Concentrations of Benzene, BTEX and TPH in Soil” is provided in Table 1. A “Site & Sample Location Map” is provided as Figure 2. Laboratory analytical reports are provided as Appendix C.

On March 8, 2014, four (4) confirmation soil samples (NSW, WSW, PA-NSW and PA-Floor @ 10') were from the excavation floor and sidewalls and submitted to the laboratory for analysis of TPH concentrations. Laboratory analytical results indicated TPH concentrations were less than the laboratory MDL in each of the submitted soil samples, with the exception of soil sample NSW, which exhibited a TPH concentration of 793 ppm. Soil sample NSW was also analyzed for BTEX concentrations, which were determined to be less than the appropriate laboratory MDL.

Between May 20 and 21, 2014, approximately three hundred and forty cubic yards (340 yd³) of impacted material was transported to Lea Land, Inc. (NMOCD Permit #WM-01-035), for disposal. The final dimensions of the excavation were approximately ten (10) to fifty feet (50') in width, seventy-five feet (75') in length and one (1) to ten feet (10') in depth. Upon receiving laboratory analytical data from confirmation soil samples, the excavated area was backfilled with locally purchased, non-impacted caliche and contoured to meet the needs of the well pad.

4.0 QA/QC PROCEDURES

4.1 Soil Sampling

Soil samples were delivered to Cardinal Laboratories, Inc., in Hobbs, New Mexico, for BTEX and/or TPH analyses using the methods described below:

- BTEX concentrations in accordance with EPA Method SW-846 8021b
- TPH concentrations in accordance with EPA Method SW-846 8015M

4.2 Decontamination of Equipment

Cleaning of the sampling equipment was the responsibility of the environmental technician. Prior to use, and between each sample, the sampling equipment was cleaned with Liqui-Nox® detergent and rinsed with distilled water.

4.3 Laboratory Protocol

The laboratory was responsible for proper QA/QC procedures after signing the chain-of-custody form(s). These procedures were either transmitted with the laboratory reports or are on file at the laboratory.

5.0 SITE CLOSURE REQUEST

Confirmation soil samples collected from the floor and sidewalls of the JRU #21 SWD Diesel Release excavation were analyzed by an NMOCD-approved laboratory, which determined concentrations of BTEX and TPH were less than NMOCD regulatory standards in each of the submitted soil samples. Based on these laboratory analytical results, Basin recommends BOPCO provide the NMOCD-Artesia District Office and the BLM a copy of this *Remediation Summary and Site Closure Request* and request the NMOCD grant site closure to the JRU #21 SWD Diesel Release site.

6.0 LIMITATIONS

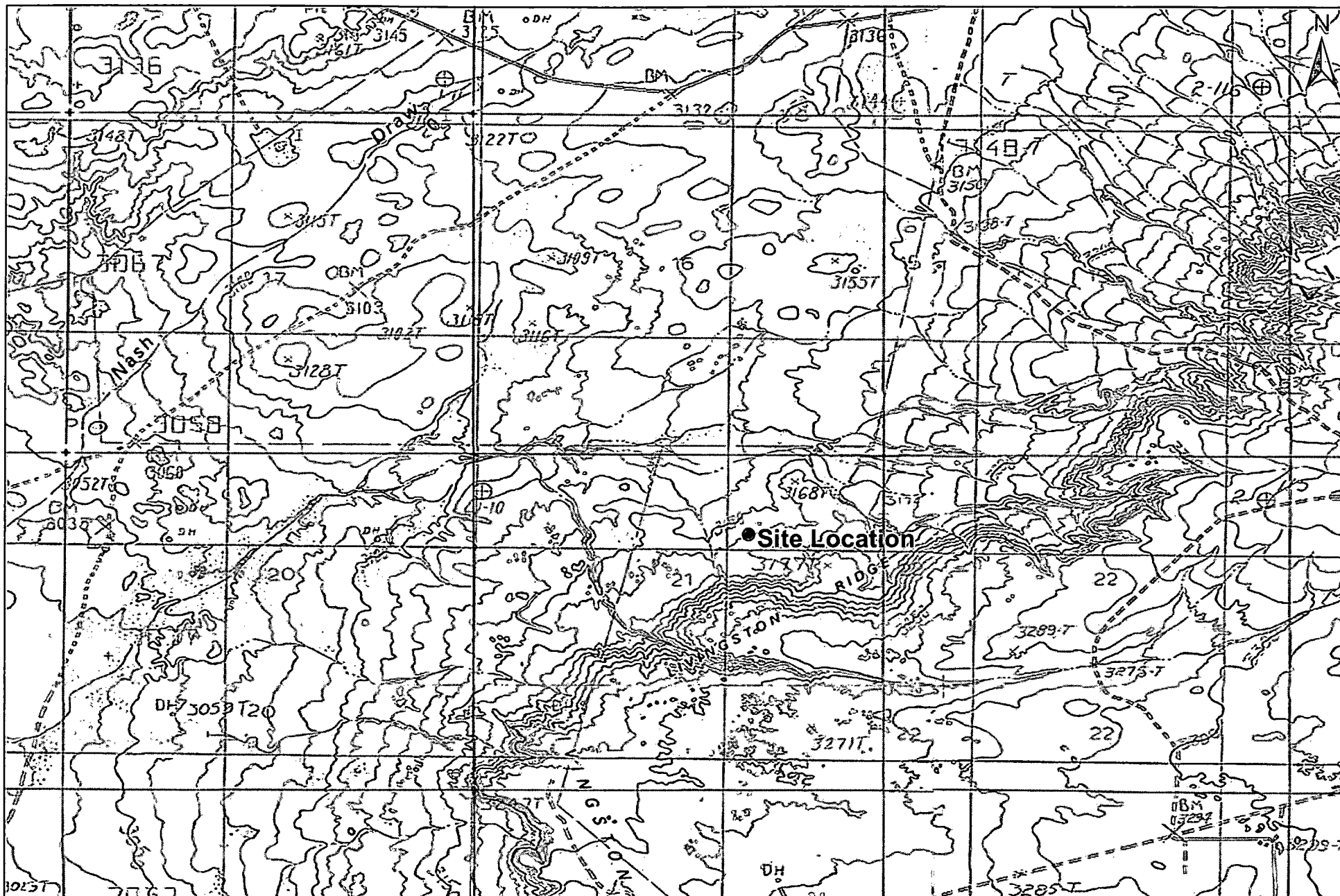
Basin Environmental Service Technologies, LLC, has prepared this *Remediation Summary and Site Closure Request* to the best of its ability. No other warranty, expressed or implied, is made or intended. Basin has examined and relied upon documents referenced in the report and on oral statements made by certain individuals. Basin has not conducted an independent examination of the facts contained in referenced materials and statements. Basin has presumed the genuineness of these documents and statements and that the information provided therein is true and accurate. Basin has prepared this report in a professional manner, using the degree of skill and care exercised by similar environmental consultants. Basin notes that the facts and conditions referenced in this report may change over time, and the conclusions and recommendations set forth herein are applicable only to the facts and conditions as described at the time of this report.

This report has been prepared for the benefit of BOPCO, LP. The information contained in this report, including all exhibits and attachments, may not be used by any other party without the express consent of Basin Environmental Service Technologies, LLC, and/or BOPCO, LP.

7.0 DISTRIBUTION:

- Copy 1: Mike Bratcher
New Mexico Energy, Minerals and Natural Resources Department
Oil Conservation Division (District 2)
1301 E. Grand Avenue
Artesia, NM 88210
- Copy 2: James Amos
Bureau of Land Management
602 E. Greene Street
Carlsbad, New Mexico 88220
- Copy 3: Tony Savoie
BOPCO, LP
522 W. Mermod, Suite 704
Carlsbad, NM 88220
- Copy 4: Basin Environmental Service Technologies, LLC
P.O. Box 301
Lovington, NM 88260

FIGURES



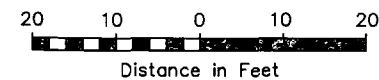
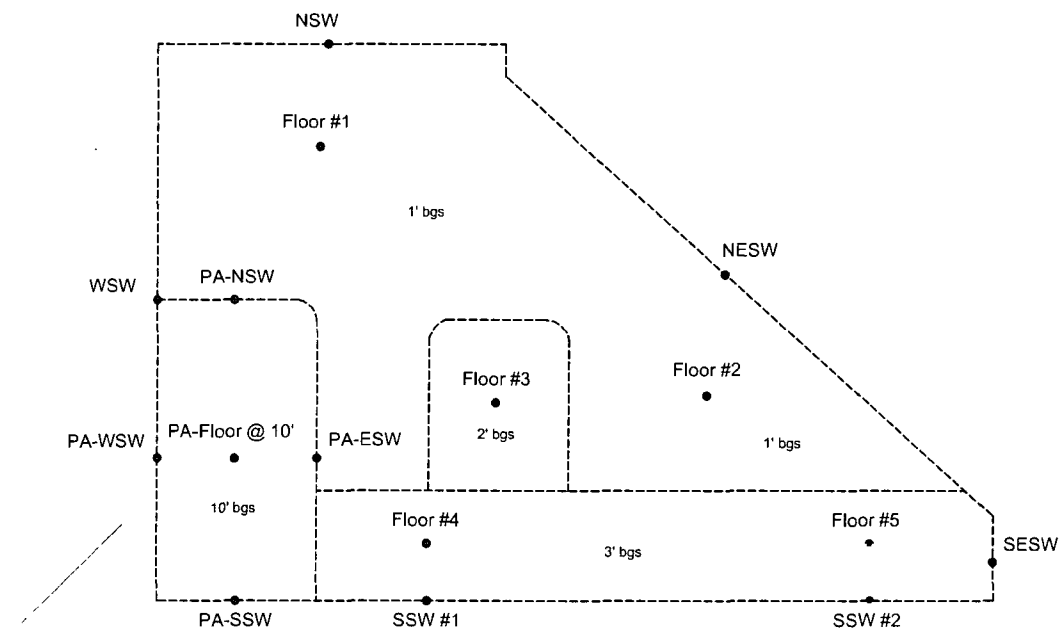
1,000 500 0 1,000 2,000
Distance in Feet

Figure 1
Site Location Map
BOPCO, LP
JRU #21 SWD Aquila 8 Diesel Release
Eddy County, New Mexico
NMOCD Reference #: 2RP-2285



Basin Environmental Service Technologies, LLC
3100 Plains Hwy.
Lovington, NM 88260

| | |
|---------------|-------------------|
| Drawn By: BJA | Checked By: BRB |
| May 29, 2014 | Scale: 1" = 2000' |



Legend:

- Excavation Extent
- Sample Location
- 2' bgs Grade

Figure 2
Site & Sample Location Map
BOPCO, L.P.
JRU #21 SWD Aquila 8 Diesel Spill
Eddy County, New Mexico
NMOCD Ref# 2RP-2285

Basin Environmental Services

Prep By: JWL

Checked By: BJA

May 7, 2014

Scale 1"=20'

TABLES

TABLE 1
CONCENTRATIONS OF BENZENE, BTEX & TPH IN SOIL

BOPCO, LP
JRU #21 SWD AQUILA 8 DIESEL RELEASE
EDDY COUNTY, NEW MEXICO

| SAMPLE LOCATION | SAMPLE DEPTH (BGS) | SAMPLE DATE | SOIL STATUS | METHOD: EPA SW 846-8021B, 5030 | | | | | METHOD: 8015M | | | TOTAL TPH C ₆ -C ₃₅ (mg/Kg) |
|------------------------|--------------------|-------------|-------------|--------------------------------|--------------------|------------------------------|-----------------------------|--------------------------|---|--|--|---|
| | | | | BENZENE (mg/Kg) | TOLUENE (mg/Kg) | ETHYL- BENZENE (mg/Kg) | TOTAL XYLENES (mg/Kg) | TOTAL BTEX (mg/Kg) | GRO C ₆ -C ₁₂ (mg/Kg) | DRO C ₁₂ -C ₂₈ (mg/Kg) | ORO C ₂₈ -C ₃₅ (mg/Kg) | |
| SSW #1 | 2' | 5/6/2014 | In-Situ | - | - | - | - | - | <10.0 | <10.0 | <10.0 | <10.0 |
| SSW #2 | 2' | 5/6/2014 | In-Situ | - | - | - | - | - | <10.0 | <10.0 | <10.0 | <10.0 |
| SESW | 2' | 5/6/2014 | In-Situ | - | - | - | - | - | <10.0 | <10.0 | <10.0 | <10.0 |
| NESW | 10" | 5/6/2014 | In-Situ | - | - | - | - | - | <10.0 | <10.0 | <10.0 | <10.0 |
| Floor #1 | 1' | 5/6/2014 | In-Situ | <0.050 | 0.118 | 0.080 | 0.234 | 0.432 | <10.0 | 556 | <10.0 | 556 |
| Floor #2 | 1' | 5/6/2014 | In-Situ | - | - | - | - | - | <10.0 | 323 | 12.3 | 335 |
| Floor #3 | 2' | 5/6/2014 | In-Situ | - | - | - | - | - | <10.0 | 127 | <10.0 | 127 |
| Floor #4 | 3' | 5/6/2014 | In-Situ | - | - | - | - | - | <10.0 | <10.0 | <10.0 | <10.0 |
| Floor #5 | 3' | 5/6/2014 | In-Situ | - | - | - | - | - | <10.0 | <10.0 | <10.0 | <10.0 |
| PA-SSW | 7' | 5/6/2014 | In-Situ | - | - | - | - | - | <10.0 | <10.0 | <10.0 | <10.0 |
| PA-ESW | 7' | 5/6/2014 | In-Situ | - | - | - | - | - | <10.0 | <10.0 | <10.0 | <10.0 |
| PA-WSW | 7' | 5/6/2014 | In-Situ | - | - | - | - | - | <10.0 | <10.0 | <10.0 | <10.0 |
| | | | | | | | | | | | | |
| NSW | 10" | 5/7/2014 | In-Situ | <0.050 | <0.050 | <0.050 | <0.150 | <0.300 | <10.0 | 764 | 29.7 | 794 |
| WSW | 3' | 5/7/2014 | In-Situ | - | - | - | - | - | <10.0 | <10.0 | <10.0 | <10.0 |
| PA-NSW | 7' | 5/7/2014 | In-Situ | - | - | - | - | - | <10.0 | <10.0 | <10.0 | <10.0 |
| PA-Floor @ 10' | 10' | 5/7/2014 | In-Situ | - | - | - | - | - | <10.0 | <10.0 | <10.0 | <10.0 |
| | | | | | | | | | | | | |
| NMOCDC Criteria | | | | 10 | | | | 50 | | | | 1,000 |

- = Not analyzed.

**TABLE 2
WASTE CHARACTERIZATION DATA**

BOPCO, LP
JRU #21 SWD AQUILA 8 DIESEL RELEASE
EDDY COUNTY, NEW MEXICO

| SAMPLE LOCATION | SAMPLE DATE | SW846 8260B | | | | | SW846 8015B | | | |
|-----------------|-------------|---------------------|---------------------|---------------------------|---------------------------|------------------------|---|--|--|---|
| | | TCLP BENZENE (mg/L) | TCLP TOLUENE (mg/L) | TCLP ETHYL-BENZENE (mg/L) | TCLP TOTAL XYLENES (mg/L) | TCLP TOTAL BTEX (mg/L) | GRO C ₆ -C ₁₀ (mg/Kg) | DRO C ₁₀ -C ₂₈ (mg/Kg) | ORO C ₂₈ -C ₃₅ (mg/Kg) | TOTAL TPH C ₆ -C ₃₅ (mg/Kg) |
| Composite 1 | 05/02/14 | <0.050 | <0.050 | <0.050 | <0.150 | <0.300 | 236 | 8,730 | 122 | 9,088 |

| SAMPLE LOCATION | SAMPLE DATE | SW846 7470A | SW846 6010B | | | | | | | ASTM D 93-80 | SW846 9010 | SW846 9030 | SW846 9045 |
|-----------------|-------------|---------------------|------------------|---------------------|----------------------|--------------------|----------------------|--------------------|---------------------|---------------------|--------------------------|--------------------------|------------|
| | | TCLP MERCURY (mg/L) | TCLP LEAD (mg/L) | TCLP ARSENIC (mg/L) | TCLP CHROMIUM (mg/L) | TCLP SILVER (mg/L) | TCLP SELENIUM (mg/L) | TCLP BARIUM (mg/L) | TCLP CADMIUM (mg/L) | FLASH POINT (Deg F) | REACTIVE CYANIDE (mg/Kg) | REACTIVE SULFIDE (mg/Kg) | pH |
| Composite 1 | 05/02/14 | <0.0002 | <0.100 | <0.100 | <0.050 | <0.050 | <0.200 | 0.518 | <0.050 | >140 | <0.100 | 0.01 | 7.41 |

APPENDICES

Appendix A
Release Notification and Corrective Action
(Form C-141)

District I
1625 N. French Dr., Hobbs, NM 88240
District II
811 S. First St., Artesia, NM 88210
District III
1000 Rio Brazos Road, Aztec, NM 87410
District IV
1220 S. St. Francis Dr., Santa Fe, NM 87505

State of New Mexico
Energy Minerals and Natural Resources

Oil Conservation Division
1220 South St. Francis Dr.
Santa Fe, NM 87505

Form C-141
Revised August 8, 2011

Submit 1 Copy to appropriate District Office in
accordance with 19.15.29 NMAC.

Release Notification and Corrective Action

n HMP1412240947

| | | | |
|--|--|---|---------------------------------------|
| OPERATOR | | <input checked="" type="checkbox"/> Initial Report | <input type="checkbox"/> Final Report |
| Name of Company: Aquila Drilling-BOPCO, L.P. <i>260737</i> | | Contact: Tony Savoie BOPCO, Clay Gordy Aquila | |
| Address: 522 W. Mermod, Suite 704 Carlsbad, N.M. 88220 | | Telephone No. BOPCO 575-887-7329, Aquila 940-761-3153 | |
| Facility Name: JRU-21 SWD-I | | Facility Type: Drilling Rig | |
| Surface Owner: Federal | | Mineral Owner: Federal | |
| | | API No. 30-015-41074 | |

LOCATION OF RELEASE

| Unit Letter | Section | Township | Range | Feet from the | North/South Line | Feet from the | East/West Line | County |
|-------------|---------|----------|-------|---------------|------------------|---------------|----------------|--------|
| G | 21 | 22S | 30E | 1508 | North | 1926 | East | Eddy |

Latitude N 32.381464 Longitude W 103.883210

NATURE OF RELEASE

| | | |
|--|--|---|
| Type of Release: Diesel | Volume of Release: 1000 gallons | Volume Recovered: 400 gallons |
| Source of Release: Bulk Storage 1" hose | Date and Hour of Occurrence: 1/13/14 approximately 5:00 a.m. | Date and Hour of Discovery: 1/13/14 at approximately 5:00 a.m. |
| Was Immediate Notice Given? <input checked="" type="checkbox"/> Yes <input type="checkbox"/> No <input type="checkbox"/> Not Required | If YES, To Whom? Mike Bratcher NMOCD, Jim Amos BLM, John Wells NMED | |
| By Whom? Tony Savoie | Date and Hour: NMOCD 1/13/14 at 10:33 a.m., BLM at 10:57a.m., NMED at 11:00 a.m. | |
| Was a Watercourse Reached? <input type="checkbox"/> Yes <input checked="" type="checkbox"/> No | If YES, Volume Impacting the Watercourse. | |
| If a Watercourse was Impacted, Describe Fully.* | | |
| <div style="text-align: right;">RECEIVED APR 29 2014 NMOCD ARTESIA</div> | | |

Describe Cause of Problem and Remedial Action Taken.*

Fuel was being transferred via a 1" hose, the hose was laid on the ground un-attended and the valve was left open. The valve was closed upon discovery.

Describe Area Affected and Cleanup Action Taken.*

The spill impacted and area approximately 50 ft. X 50 ft. around the diesel storage tanks and approximately 185 ft. of containment ditch that had been dug around the tanks and generators. Approximately 400 gallons of diesel was recovered, remediation will take place after the rig, tanks and generators have been removed. The rig moved off location on 4/20/14. DFSI, will begin remediation activities on 4/29/14. The waste generated by the spill will be tested to determine the complete waste characteristics before moving off-site

The spill area will be cleaned up in accordance to the NMOCD, BLM and NMED remediation guidelines.

I hereby certify that the information given above is true and complete to the best of my knowledge and understand that pursuant to NMOCD rules and regulations all operators are required to report and/or file certain release notifications and perform corrective actions for releases which may endanger public health or the environment. The acceptance of a C-141 report by the NMOCD marked as "Final Report" does not relieve the operator of liability should their operations have failed to adequately investigate and remediate contamination that pose a threat to ground water, surface water, human health or the environment. In addition, NMOCD acceptance of a C-141 report does not relieve the operator of responsibility for compliance with any other federal, state, or local laws and/or regulations.

OIL CONSERVATION DIVISION

| | | |
|--|--|----------------------------|
| Signature: <i>Tony Savoie</i> | Approved by Environmental Specialist: <i>[Signature]</i> | |
| Printed Name: Tony Savoie Printed Name: Clay Gordy Operations Mgr. for Aquila | | |
| Title: Waste Management and Remediation Specialist | Approval Date: <i>5/2/14</i> | Expiration Date: <i>NA</i> |
| E-mail Address: <i>tasavoie@basspet.com</i> | Conditions of Approval: Remediation per OCD Rule & Guidelines, & like approval by BLM. SUBMIT REMEDIATION | |
| Date: <i>4/24/14</i> <i>4/29/14</i> Phone: 432-556-8731 | Attached <input type="checkbox"/> | |

* Attach Additional Sheets If Necessary

PROPOSAL NO LATER THAN:

6/2/14

2RP-2285

District I
1625 N. French Dr., Hobbs, NM 88240
District II
811 S. First St., Artesia, NM 88210
District III
1000 Rio Brazos Road, Aztec, NM 87410
District IV
1220 S. St. Francis Dr., Santa Fe, NM 87505

State of New Mexico
Energy Minerals and Natural Resources

Form C-141
Revised August 8, 2011

Oil Conservation Division
1220 South St. Francis Dr.
Santa Fe, NM 87505

Submit 1 Copy to appropriate District Office in
accordance with 19.15.29 NMAC.

Release Notification and Corrective Action

22P-2285

OPERATOR

☐ Initial Report ☒ Final Report

| | | |
|---|--|----------------------|
| Name of Company: Aquila Drilling -BOPCO, LP | Contact: Tony Savoie BOPCO. Clay Gordy Aquila | |
| Address: 522 W. Mermod, Suite 704, Carlsbad, NM 88220 | Telephone No. BOPCO (575)887-7329, Aquila 940-761-3153 | |
| Facility Name: JRU-21 SWD-1 | Facility Type: Drilling Rig | |
| Surface Owner: Federal | Mineral Owner: Federal | API No. 30-015-41074 |

LOCATION OF RELEASE

| Unit Letter | Section | Township | Range | Feet from the | North/South Line | Feet from the | East/West Line | County |
|-------------|---------|----------|-------|---------------|------------------|---------------|----------------|--------|
| G | 21 | 22S | 30E | 1508 | North | 1926 | West | Eddy |

Latitude N 32.381464 Longitude W 103.883210

NATURE OF RELEASE

| | | |
|--|--|---|
| Type of Release Diesel | Volume of Release 1000 gallons | Volume Recovered 400 gallons |
| Source of Release Bulk Storage 1" hose | Date and Hour of Occurrence 1/13/14 approximately 5:00 a.m. | Date and Hour of Discovery 1/13/14 approximately 5:00 a.m. |
| Was Immediate Notice Given? <input checked="" type="checkbox"/> Yes <input type="checkbox"/> No <input type="checkbox"/> Not Required | If YES, To Whom? Mike Bratcher NMOCD, Jim Amos BLM, John Wells NMED | |
| By Whom? Tony Savoie | Date and Hour NMOCD 1/13/14 at 10:33 a.m., BLM at 10:57 a.m., NMED at 11:00 a.m. | |
| Was a Watercourse Reached? <input type="checkbox"/> Yes <input checked="" type="checkbox"/> No | If YES, Volume Impacting the Watercourse. | |

NM OIL CONSERVATION

If a Watercourse was Impacted, Describe Fully.*

ARTESIA DISTRICT

JUL 01 2014

Describe Cause of Problem and Remedial Action Taken.*

Fuel was being transferred via a 1" hose, the hose was laid on the ground unattended and the valve was left open. The valve was closed upon discovery.

RECEIVED

Describe Area Affected and Cleanup Action Taken.*

The spill impacted an area approximately 50 ft. x 50 ft. around the diesel storage tanks and approximately 185 ft. of containment ditch that had been dug around the tanks and generators. Approximately 400 gallons of diesel was recovered, remediation will take place after the rig, tanks and generators have been removed. The rig moved off location on 4/20/14. DFSI, will be begin remediation activities on 4/29/14. The waste generated by the spill will be tested to determine the complete waste characteristics before moving off-site.

Approximately 340 cu. yds of impacted soil was excavated from an area measuring approximately 10' to 50' in width, 75' in length, and 1' to 10' in depth. Impacted soil was hauled to an NMOCD-approved disposal facility. The excavation was backfilled with locally purchased, non-impacted material. **Please reference the attached Remediation Summary and Site Closure Request for detail of Remediation Activities.**

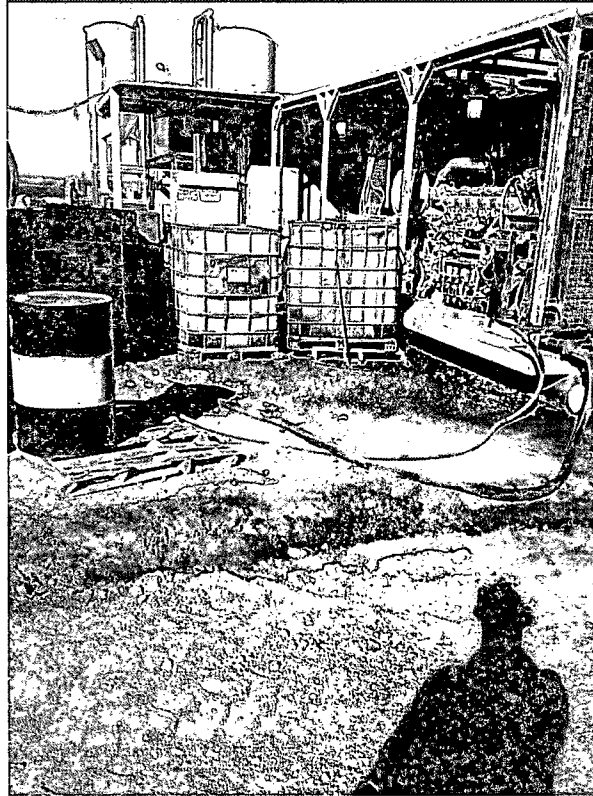
I hereby certify that the information given above is true and complete to the best of my knowledge and understand that pursuant to NMOCD rules and regulations all operators are required to report and/or file certain release notifications and perform corrective actions for releases which may endanger public health or the environment. The acceptance of a C-141 report by the NMOCD marked as "Final Report" does not relieve the operator of liability should their operations have failed to adequately investigate and remediate contamination that pose a threat to ground water, surface water, human health or the environment. In addition, NMOCD acceptance of a C-141 report does not relieve the operator of responsibility for compliance with any other federal, state, or local laws and/or regulations.

| | | | |
|--|--|---------------------------------------|------------------|
| Signature: <i>Tony Savoie</i> | | OIL CONSERVATION DIVISION | |
| Printed Name: Tony Savoie | | Approved by Environmental Specialist: | |
| Title: Waste Management and Remediation Specialist | | Approval Date: | Expiration Date: |
| E-mail Address: tasavoie@basspet.com | | Conditions of Approval: | |
| Date: 7/1/14 Phone: 432-556-8730 | | Attached <input type="checkbox"/> | |

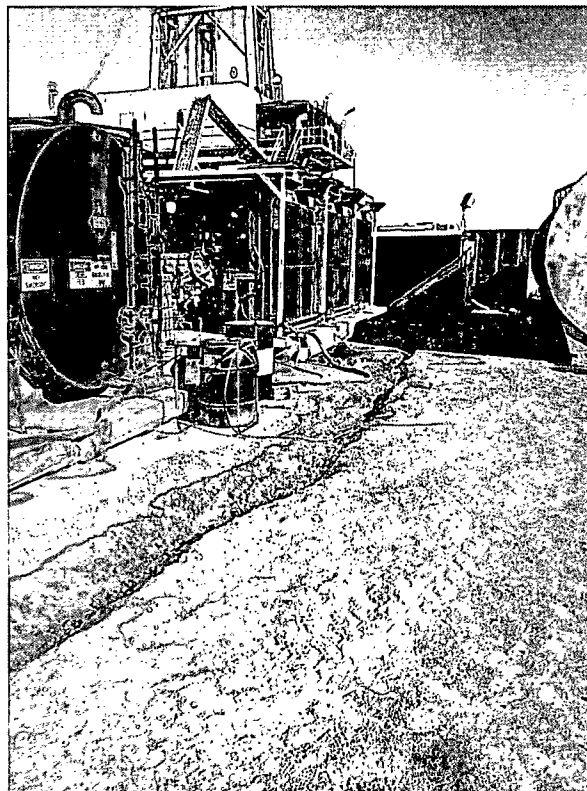
* Attach Additional Sheets If Necessary

Appendix B

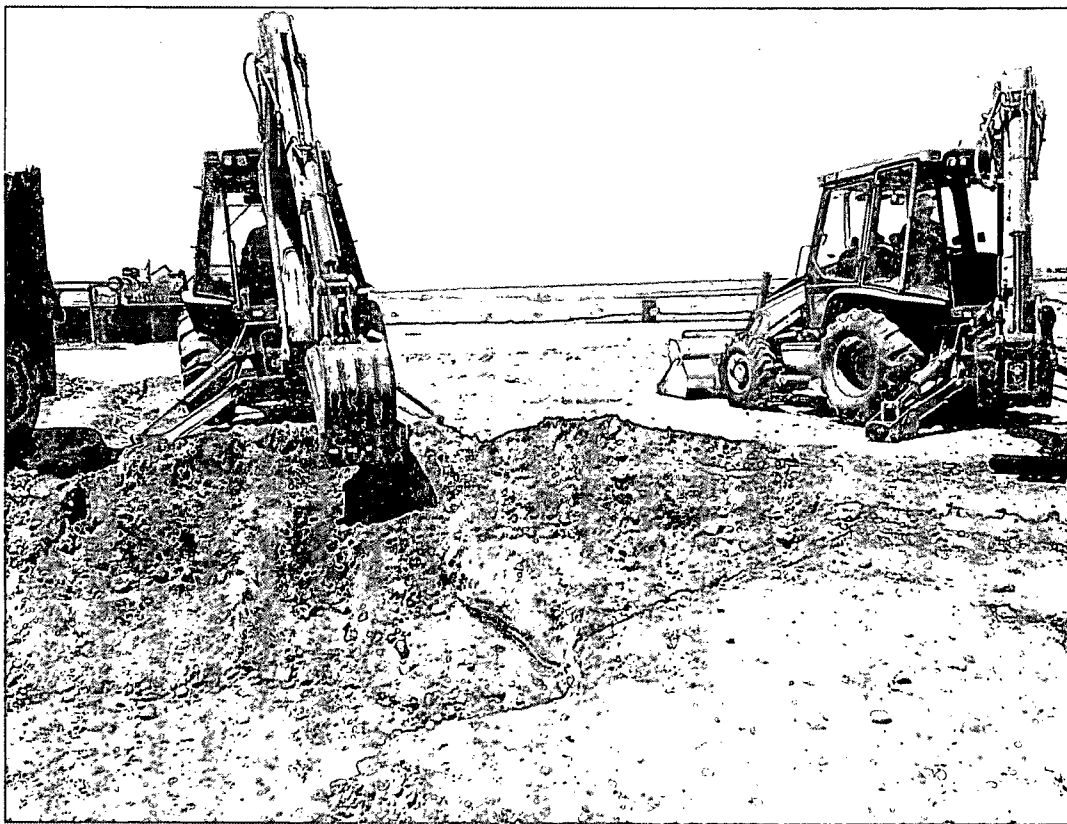
Photographs



Photograph of the initial release at the JRU #21 SWD Aquila 8 Diesel Release site.



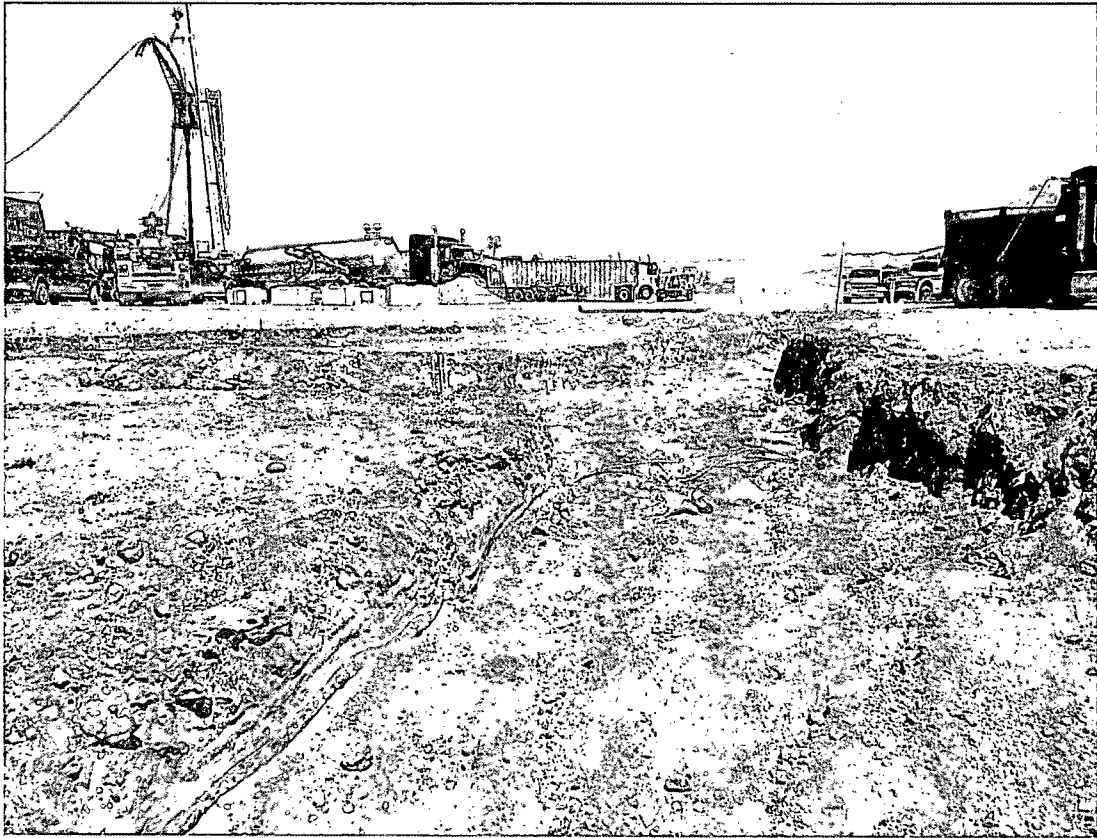
Photograph of the initial release at the JRU #21 SWD Aquila 8 Diesel Release site.



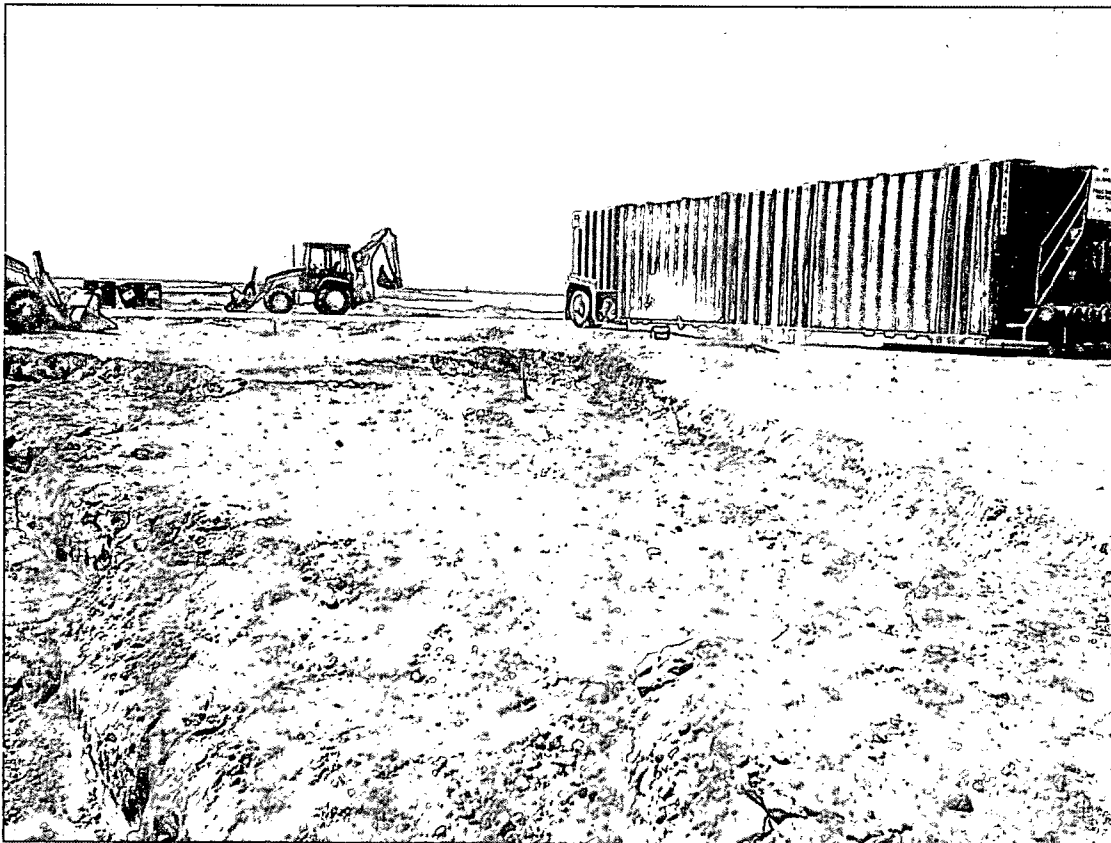
Photograph of excavation activities at the JRU #21 SWD Aquila 8 Diesel Release site.



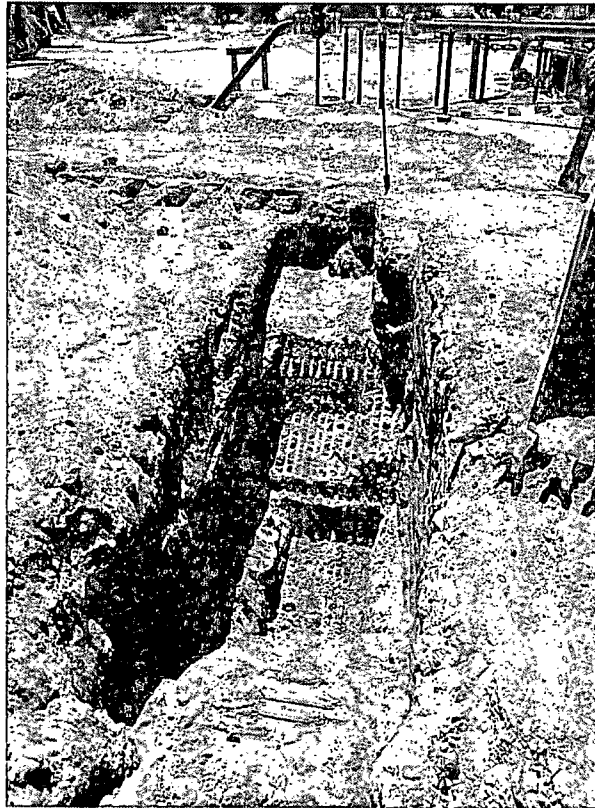
Photograph of excavation activities at the JRU #21 SWD Aquila 8 Diesel Release site.



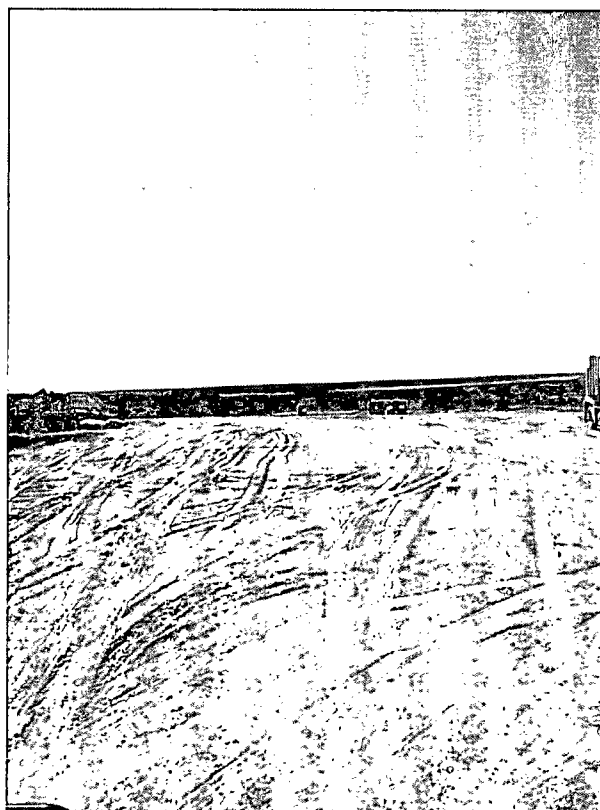
Photograph of the excavated area at the JRU #21 SWD Aquila 8 Diesel Release site.



Photograph of the excavated area at the JRU #21 SWD Aquila 8 Diesel Release site.



Photograph of the excavated pooling area at the JRU #21 SWD Aquila 8 Diesel Release site.



Photograph of the JRU #21 SWD Aquila 8 Diesel Release site after remediation activities.

Appendix C

Laboratory Analytical Reports



PHONE (575) 393-2326 • 101 E. MARLAND • HOBBS, NM 88240

May 15, 2014

JOEL LOWRY

Basin Environmental Service

P.O. Box 301

Lovington, NM 88260

RE: JRU-21 SWD AQUILLA #8 DIESEL SPILL

Enclosed are the results of analyses for samples received by the laboratory on 05/07/14 12:10.

Cardinal Laboratories is accredited through Texas NELAP under certificate number T104704398-13-5. Accreditation applies to drinking water, non-potable water and solid and chemical materials. All accredited analytes are denoted by an asterisk (*). For a complete list of accredited analytes and matrices visit the TCEQ website at www.tceq.texas.gov/field/qa/lab_accred_certif.html.

Cardinal Laboratories is accredited through the State of Colorado Department of Public Health and Environment for:

| | |
|------------------|------------------------------|
| Method EPA 552.2 | Haloacetic Acids (HAA-5) |
| Method EPA 524.2 | Total Trihalomethanes (TTHM) |
| Method EPA 524.4 | Regulated VOCs (V1, V2, V3) |

Accreditation applies to public drinking water matrices.

This report meets NELAP requirements and is made up of a cover page, analytical results, and a copy of the original chain-of-custody. If you have any questions concerning this report, please feel free to contact me.

Sincerely,

Celey D. Keene

Lab Director/Quality Manager

Analytical Results For:

Basin Environmental Service
JOEL LOWRY
P.O. Box 301
Lovington NM, 88260
Fax To: (575) 396-1429

| | | | |
|-------------------|------------------------------------|---------------------|---------------|
| Received: | 05/07/2014 | Sampling Date: | 05/06/2014 |
| Reported: | 05/15/2014 | Sampling Type: | Soil |
| Project Name: | JRU-21 SWD AQUILLA #8 DIESEL SPILL | Sampling Condition: | Cool & Intact |
| Project Number: | NONE GIVEN | Sample Received By: | Jodi Henson |
| Project Location: | EDDY COUNTY, NM | | |

Sample ID: SSW #1 (H401387-01)

| TPH 8015M | mg/kg | | Analyzed By: MS | | | | | | |
|-------------------------------|--------|-----------------|-----------------|--------------|-----|------------|---------------|------|-----------|
| Analyte | Result | Reporting Limit | Analyzed | Method Blank | BS | % Recovery | True Value QC | RPD | Qualifier |
| GRO C6-C10 | <10.0 | 10.0 | 05/10/2014 | ND | 216 | 108 | 200 | 7.58 | |
| DRO >C10-C28 | <10.0 | 10.0 | 05/10/2014 | ND | 237 | 118 | 200 | 7.16 | |
| EXT DRO >C28-C35 | <10.0 | 10.0 | 05/10/2014 | ND | | | | | |
| <hr/> | | | | | | | | | |
| Surrogate: 1-Chlorooctane | 107 % | 65.2-140 | | | | | | | |
| Surrogate: 1-Chlorooctadecane | 111 % | 63.6-154 | | | | | | | |

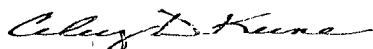
Sample ID: SSW #2 (H401387-02)

| TPH 8015M | mg/kg | | Analyzed By: MS | | | | | | |
|-------------------------------|--------|-----------------|-----------------|--------------|-----|------------|---------------|------|-----------|
| Analyte | Result | Reporting Limit | Analyzed | Method Blank | BS | % Recovery | True Value QC | RPD | Qualifier |
| GRO C6-C10 | <10.0 | 10.0 | 05/10/2014 | ND | 216 | 108 | 200 | 7.58 | |
| DRO >C10-C28 | <10.0 | 10.0 | 05/10/2014 | ND | 237 | 118 | 200 | 7.16 | |
| EXT DRO >C28-C35 | <10.0 | 10.0 | 05/10/2014 | ND | | | | | |
| <hr/> | | | | | | | | | |
| Surrogate: 1-Chlorooctane | 109 % | 65.2-140 | | | | | | | |
| Surrogate: 1-Chlorooctadecane | 108 % | 63.6-154 | | | | | | | |

Cardinal Laboratories

*=Accredited Analyte

PLEASE NOTE: Liability and Damages. Cardinal's liability and client's exclusive remedy for any claim arising, whether based in contract or tort, shall be limited to the amount paid by client for analyses. All claims, including those for negligence and any other cause whatsoever shall be deemed waived unless made in writing and received by Cardinal within thirty (30) days after completion of the applicable service. In no event shall Cardinal be liable for incidental or consequential damages, including, without limitation, business interruptions, loss of use, or loss of profits incurred by client, its subsidiaries, affiliates or successors arising out of or related to the performance of the services hereunder by Cardinal, regardless of whether such claim is based upon any of the above stated reasons or otherwise. Results relate only to the samples identified above. This report shall not be reproduced except in full with written approval of Cardinal Laboratories.



Celey D. Keene, Lab Director/Quality Manager

Analytical Results For:

Basin Environmental Service
JOEL LOWRY
P.O. Box 301
Lovington NM, 88260
Fax To: (575) 396-1429

| | | | |
|-------------------|------------------------------------|---------------------|---------------|
| Received: | 05/07/2014 | Sampling Date: | 05/06/2014 |
| Reported: | 05/15/2014 | Sampling Type: | Soil |
| Project Name: | JRU-21 SWD AQUILLA #8 DIESEL SPILL | Sampling Condition: | Cool & Intact |
| Project Number: | NONE GIVEN | Sample Received By: | Jodi Henson |
| Project Location: | EDDY COUNTY, NM | | |

Sample ID: SESW (H401387-03)

| TPH 8015M | | mg/kg | | Analyzed By: MS | | | | | |
|-------------------------------|--------|-----------------|------------|-----------------|-----|------------|---------------|------|-----------|
| Analyte | Result | Reporting Limit | Analyzed | Method Blank | BS | % Recovery | True Value QC | RPD | Qualifier |
| GRO C6-C10 | <10.0 | 10.0 | 05/10/2014 | ND | 216 | 108 | 200 | 7.58 | |
| DRO >C10-C28 | <10.0 | 10.0 | 05/10/2014 | ND | 237 | 118 | 200 | 7.16 | |
| EXT DRO >C28-C35 | <10.0 | 10.0 | 05/10/2014 | ND | | | | | |
| | | | | | | | | | |
| Surrogate: 1-Chlorooctane | 124 % | 65.2-140 | | | | | | | |
| Surrogate: 1-Chlorooctadecane | 122 % | 63.6-154 | | | | | | | |

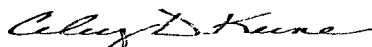
Sample ID: NESW (H401387-04)

| TPH 8015M | | mg/kg | | Analyzed By: MS | | | | | |
|-------------------------------|--------|-----------------|------------|-----------------|-----|------------|---------------|------|-----------|
| Analyte | Result | Reporting Limit | Analyzed | Method Blank | BS | % Recovery | True Value QC | RPD | Qualifier |
| GRO C6-C10 | <10.0 | 10.0 | 05/10/2014 | ND | 216 | 108 | 200 | 7.58 | |
| DRO >C10-C28 | <10.0 | 10.0 | 05/10/2014 | ND | 237 | 118 | 200 | 7.16 | |
| EXT DRO >C28-C35 | <10.0 | 10.0 | 05/10/2014 | ND | | | | | |
| | | | | | | | | | |
| Surrogate: 1-Chlorooctane | 112 % | 65.2-140 | | | | | | | |
| Surrogate: 1-Chlorooctadecane | 116 % | 63.6-154 | | | | | | | |

Cardinal Laboratories

*=Accredited Analyte

PLEASE NOTE: Liability and Damages. Cardinal's liability and client's exclusive remedy for any claim arising, whether based in contract or tort, shall be limited to the amount paid by client for analyses. All claims, including those for negligence and any other cause whatsoever shall be deemed waived unless made in writing and received by Cardinal within thirty (30) days after completion of the applicable service. In no event shall Cardinal be liable for incidental or consequential damages, including, without limitation, business interruptions, loss of use, or loss of profits incurred by client, its subsidiaries, affiliates or successors arising out of or related to the performance of the services hereunder by Cardinal, regardless of whether such claim is based upon any of the above stated reasons or otherwise. Results relate only to the samples identified above. This report shall not be reproduced except in full with written approval of Cardinal Laboratories.



Celey D. Keene, Lab Director/Quality Manager

Analytical Results For:

Basin Environmental Service
JOEL LOWRY
P.O. Box 301
Lovington NM, 88260
Fax To: (575) 396-1429

| | | | |
|-------------------|------------------------------------|---------------------|---------------|
| Received: | 05/07/2014 | Sampling Date: | 05/06/2014 |
| Reported: | 05/15/2014 | Sampling Type: | Soil |
| Project Name: | JRU-21 SWD AQUILLA #8 DIESEL SPILL | Sampling Condition: | Cool & Intact |
| Project Number: | NONE GIVEN | Sample Received By: | Jodi Henson |
| Project Location: | EDDY COUNTY, NM | | |

Sample ID: FLOOR #1 (H401387-05)

| BTEX 8260B | | mg/kg | | Analyzed By: ms | | | | | |
|----------------|--------------|-----------------|------------|-----------------|------|------------|---------------|-------|-----------|
| Analyte | Result | Reporting Limit | Analyzed | Method Blank | BS | % Recovery | True Value QC | RPD | Qualifier |
| Benzene* | <0.050 | 0.050 | 05/14/2014 | ND | 2.57 | 128 | 2.00 | 1.88 | |
| Toluene* | 0.118 | 0.050 | 05/14/2014 | ND | 2.46 | 123 | 2.00 | 0.702 | |
| Ethylbenzene* | 0.080 | 0.050 | 05/14/2014 | ND | 2.31 | 115 | 2.00 | 1.10 | |
| Total Xylenes* | 0.234 | 0.150 | 05/14/2014 | ND | 7.02 | 117 | 6.00 | 0.363 | |
| Total BTEX | 0.432 | 0.300 | 05/14/2014 | ND | | | | | |

Surrogate: Dibromofluoromethane 96.6 % 61.3-142

Surrogate: Toluene-d8 103 % 71.3-129

Surrogate: 4-Bromofluorobenzene 109 % 65.7-141

| TPH 8015M | | mg/kg | | Analyzed By: MS | | | | | |
|------------------|------------|-----------------|------------|-----------------|-----|------------|---------------|------|-----------|
| Analyte | Result | Reporting Limit | Analyzed | Method Blank | BS | % Recovery | True Value QC | RPD | Qualifier |
| GRO C6-C10 | <10.0 | 10.0 | 05/10/2014 | ND | 216 | 108 | 200 | 7.58 | |
| DRO >C10-C28 | 556 | 10.0 | 05/10/2014 | ND | 237 | 118 | 200 | 7.16 | |
| EXT DRO >C28-C35 | <10.0 | 10.0 | 05/10/2014 | ND | | | | | |

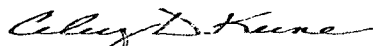
Surrogate: 1-Chlorooctane 97.7 % 65.2-140

Surrogate: 1-Chlorooctadecane 88.7 % 63.6-154

Cardinal Laboratories

*=Accredited Analyte

PLEASE NOTE: Liability and Damages. Cardinal's liability and client's exclusive remedy for any claim arising, whether based in contract or tort, shall be limited to the amount paid by client for analyses. All claims, including those for negligence and any other cause whatsoever shall be deemed waived unless made in writing and received by Cardinal within thirty (30) days after completion of the applicable service. In no event shall Cardinal be liable for incidental or consequential damages, including, without limitation, business interruptions, loss of use, or loss of profits incurred by client, its subsidiaries, affiliates or successors arising out of or related to the performance of the services hereunder by Cardinal, regardless of whether such claim is based upon any of the above stated reasons or otherwise. Results relate only to the samples identified above. This report shall not be reproduced except in full with written approval of Cardinal Laboratories.



Celey D. Keene, Lab Director/Quality Manager

Analytical Results For:

 Basin Environmental Service
 JOEL LOWRY
 P.O. Box 301
 Lovington NM, 88260
 Fax To: (575) 396-1429

| | | | |
|-------------------|------------------------------------|---------------------|---------------|
| Received: | 05/07/2014 | Sampling Date: | 05/06/2014 |
| Reported: | 05/15/2014 | Sampling Type: | Soil |
| Project Name: | JRU-21 SWD AQUILLA #8 DIESEL SPILL | Sampling Condition: | Cool & Intact |
| Project Number: | NONE GIVEN | Sample Received By: | Jodi Henson |
| Project Location: | EDDY COUNTY, NM | | |

Sample ID: FLOOR #2 (H401387-06)

| TPH 8015M | mg/kg | | Analyzed By: MS | | | | | | |
|-------------------------------|-------------|-----------------|-----------------|--------------|-----|------------|---------------|------|-----------|
| Analyte | Result | Reporting Limit | Analyzed | Method Blank | BS | % Recovery | True Value QC | RPD | Qualifier |
| GRO C6-C10 | <10.0 | 10.0 | 05/10/2014 | ND | 216 | 108 | 200 | 7.58 | |
| DRO >C10-C28 | 323 | 10.0 | 05/10/2014 | ND | 237 | 118 | 200 | 7.16 | |
| EXT DRO >C28-C35 | 12.3 | 10.0 | 05/10/2014 | ND | | | | | |
| <hr/> | | | | | | | | | |
| Surrogate: 1-Chlorooctane | 106 % | 65.2-140 | | | | | | | |
| Surrogate: 1-Chlorooctadecane | 108 % | 63.6-154 | | | | | | | |

Sample ID: FLOOR #3 (H401387-07)

| TPH 8015M | mg/kg | | Analyzed By: MS | | | | | | |
|-------------------------------|-----------------|-----------------|-----------------|--------------|-----|------------|---------------|------|-----------|
| Analyte | Result | Reporting Limit | Analyzed | Method Blank | BS | % Recovery | True Value QC | RPD | Qualifier |
| GRO C6-C10 | <10.0 | 10.0 | 05/10/2014 | ND | 216 | 108 | 200 | 7.58 | |
| DRO >C10-C28 | 127 | 10.0 | 05/10/2014 | ND | 237 | 118 | 200 | 7.16 | |
| EXT DRO >C28-C35 | <10.0 | 10.0 | 05/10/2014 | ND | | | | | |
| <hr/> | | | | | | | | | |
| Surrogate: 1-Chlorooctane | 117 % | 65.2-140 | | | | | | | |
| Surrogate: 1-Chlorooctadecane | 122 % | 63.6-154 | | | | | | | |

Cardinal Laboratories

* = Accredited Analyte

PLEASE NOTE: Liability and Damages. Cardinal's liability and client's exclusive remedy for any claim arising, whether based in contract or tort, shall be limited to the amount paid by client for analyses. All claims, including those for negligence and any other cause whatsoever shall be deemed waived unless made in writing and received by Cardinal within thirty (30) days after completion of the applicable service. In no event shall Cardinal be liable for incidental or consequential damages, including, without limitation, business interruptions, loss of use, or loss of profits incurred by client, its subsidiaries, affiliates or successors arising out of or related to the performance of the services hereunder by Cardinal, regardless of whether such claim is based upon any of the above stated reasons or otherwise. Results relate only to the samples identified above. This report shall not be reproduced except in full with written approval of Cardinal Laboratories.



Celey D. Keene, Lab Director/Quality Manager

Analytical Results For:

 Basin Environmental Service
 JOEL LOWRY
 P.O. Box 301
 Lovington NM, 88260
 Fax To: (575) 396-1429

| | | | |
|-------------------|------------------------------------|---------------------|---------------|
| Received: | 05/07/2014 | Sampling Date: | 05/06/2014 |
| Reported: | 05/15/2014 | Sampling Type: | Soil |
| Project Name: | JRU-21 SWD AQUILLA #8 DIESEL SPILL | Sampling Condition: | Cool & Intact |
| Project Number: | NONE GIVEN | Sample Received By: | Jodi Henson |
| Project Location: | EDDY COUNTY, NM | | |

Sample ID: FLOOR #4 (H401387-08)

| TPH 8015M | mg/kg | Analyzed By: MS | | | | | | | |
|-------------------------------|--------|-----------------|------------|--------------|-----|------------|---------------|------|-----------|
| Analyte | Result | Reporting Limit | Analyzed | Method Blank | BS | % Recovery | True Value QC | RPD | Qualifier |
| GRO C6-C10 | <10.0 | 10.0 | 05/10/2014 | ND | 216 | 108 | 200 | 7.58 | |
| DRO >C10-C28 | <10.0 | 10.0 | 05/10/2014 | ND | 237 | 118 | 200 | 7.16 | |
| EXT DRO >C28-C35 | <10.0 | 10.0 | 05/10/2014 | ND | | | | | |
| <hr/> | | | | | | | | | |
| Surrogate: 1-Chlorooctane | 108 % | 65.2-140 | | | | | | | |
| Surrogate: 1-Chlorooctadecane | 111 % | 63.6-154 | | | | | | | |

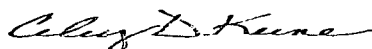
Sample ID: FLOOR #5 (H401387-09)

| TPH 8015M | mg/kg | Analyzed By: MS | | | | | | | |
|-------------------------------|--------|-----------------|------------|--------------|-----|------------|---------------|------|-----------|
| Analyte | Result | Reporting Limit | Analyzed | Method Blank | BS | % Recovery | True Value QC | RPD | Qualifier |
| GRO C6-C10 | <10.0 | 10.0 | 05/10/2014 | ND | 216 | 108 | 200 | 7.58 | |
| DRO >C10-C28 | <10.0 | 10.0 | 05/10/2014 | ND | 237 | 118 | 200 | 7.16 | |
| EXT DRO >C28-C35 | <10.0 | 10.0 | 05/10/2014 | ND | | | | | |
| <hr/> | | | | | | | | | |
| Surrogate: 1-Chlorooctane | 105 % | 65.2-140 | | | | | | | |
| Surrogate: 1-Chlorooctadecane | 105 % | 63.6-154 | | | | | | | |

Cardinal Laboratories

*=Accredited Analyte

PLEASE NOTE: Liability and Damages. Cardinal's liability and client's exclusive remedy for any claim arising, whether based in contract or tort, shall be limited to the amount paid by client for analyses. All claims, including those for negligence and any other cause whatsoever shall be deemed waived unless made in writing and received by Cardinal within thirty (30) days after completion of the applicable service. In no event shall Cardinal be liable for incidental or consequential damages, including, without limitation, business interruptions, loss of use, or loss of profits incurred by client, its subsidiaries, affiliates or successors arising out of or related to the performance of the services hereunder by Cardinal, regardless of whether such claim is based upon any of the above stated reasons or otherwise. Results relate only to the samples identified above. This report shall not be reproduced except in full with written approval of Cardinal Laboratories.



Celey D. Keene, Lab Director/Quality Manager

Analytical Results For:

Basin Environmental Service
JOEL LOWRY
P.O. Box 301
Lovington NM, 88260
Fax To: (575) 396-1429

| | | | |
|-------------------|------------------------------------|---------------------|---------------|
| Received: | 05/07/2014 | Sampling Date: | 05/06/2014 |
| Reported: | 05/15/2014 | Sampling Type: | Soil |
| Project Name: | JRU-21 SWD AQUILLA #8 DIESEL SPILL | Sampling Condition: | Cool & Intact |
| Project Number: | NONE GIVEN | Sample Received By: | Jodi Henson |
| Project Location: | EDDY COUNTY, NM | | |

Sample ID: PA-SSW (H401387-10)

| TPH 8015M | mg/kg | | Analyzed By: MS | | | | | | |
|-------------------------------|--------|-----------------|-----------------|--------------|-----|------------|---------------|------|-----------|
| Analyte | Result | Reporting Limit | Analyzed | Method Blank | BS | % Recovery | True Value QC | RPD | Qualifier |
| GRO C6-C10 | <10.0 | 10.0 | 05/10/2014 | ND | 216 | 108 | 200 | 7.58 | |
| DRO >C10-C28 | <10.0 | 10.0 | 05/10/2014 | ND | 237 | 118 | 200 | 7.16 | |
| EXT DRO >C28-C35 | <10.0 | 10.0 | 05/10/2014 | ND | | | | | |
| <hr/> | | | | | | | | | |
| Surrogate: 1-Chlorooctane | 111 % | 65.2-140 | | | | | | | |
| Surrogate: 1-Chlorooctadecane | 111 % | 63.6-154 | | | | | | | |

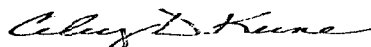
Sample ID: PA-ESW (H401387-11)

| TPH 8015M | mg/kg | | Analyzed By: MS | | | | | | |
|-------------------------------|--------|-----------------|-----------------|--------------|-----|------------|---------------|------|-----------|
| Analyte | Result | Reporting Limit | Analyzed | Method Blank | BS | % Recovery | True Value QC | RPD | Qualifier |
| GRO C6-C10 | <10.0 | 10.0 | 05/10/2014 | ND | 216 | 108 | 200 | 7.58 | |
| DRO >C10-C28 | <10.0 | 10.0 | 05/10/2014 | ND | 237 | 118 | 200 | 7.16 | |
| EXT DRO >C28-C35 | <10.0 | 10.0 | 05/10/2014 | ND | | | | | |
| <hr/> | | | | | | | | | |
| Surrogate: 1-Chlorooctane | 109 % | 65.2-140 | | | | | | | |
| Surrogate: 1-Chlorooctadecane | 109 % | 63.6-154 | | | | | | | |

Cardinal Laboratories

*=Accredited Analyte

PLEASE NOTE: Liability and Damages. Cardinal's liability and client's exclusive remedy for any claim arising, whether based in contract or tort, shall be limited to the amount paid by client for analyses. All claims, including those for negligence and any other cause whatsoever shall be deemed waived unless made in writing and received by Cardinal within thirty (30) days after completion of the applicable service. In no event shall Cardinal be liable for incidental or consequential damages, including, without limitation, business interruptions, loss of use, or loss of profits incurred by client, its subsidiaries, affiliates or successors arising out of or related to the performance of the services hereunder by Cardinal, regardless of whether such claim is based upon any of the above stated reasons or otherwise. Results relate only to the samples identified above. This report shall not be reproduced except in full with written approval of Cardinal Laboratories.



Celey D. Keene, Lab Director/Quality Manager

Analytical Results For:

Basin Environmental Service
JOEL LOWRY
P.O. Box 301
Lovington NM, 88260
Fax To: (575) 396-1429

| | | | |
|-------------------|------------------------------------|---------------------|---------------|
| Received: | 05/07/2014 | Sampling Date: | 05/06/2014 |
| Reported: | 05/15/2014 | Sampling Type: | Soil |
| Project Name: | JRU-21 SWD AQUILLA #8 DIESEL SPILL | Sampling Condition: | Cool & Intact |
| Project Number: | NONE GIVEN | Sample Received By: | Jodi Henson |
| Project Location: | EDDY COUNTY, NM | | |

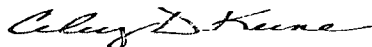
Sample ID: PA-WSW (H401387-12)

| TPH 8015M | mg/kg | | Analyzed By: MS | | | | | | |
|-------------------------------|--------|-----------------|-----------------|--------------|-----|------------|---------------|------|-----------|
| Analyte | Result | Reporting Limit | Analyzed | Method Blank | BS | % Recovery | True Value QC | RPD | Qualifier |
| GRO C6-C10 | <10.0 | 10.0 | 05/10/2014 | ND | 216 | 108 | 200 | 7.58 | |
| DRO >C10-C28 | <10.0 | 10.0 | 05/10/2014 | ND | 237 | 118 | 200 | 7.16 | |
| EXT DRO >C28-C35 | <10.0 | 10.0 | 05/10/2014 | ND | | | | | |
| <hr/> | | | | | | | | | |
| Surrogate: 1-Chlorooctane | 119 % | 65.2-140 | | | | | | | |
| Surrogate: 1-Chlorooctadecane | 121 % | 63.6-154 | | | | | | | |

Cardinal Laboratories

*=Accredited Analyte

PLEASE NOTE: Liability and Damages. Cardinal's liability and client's exclusive remedy for any claim arising, whether based in contract or tort, shall be limited to the amount paid by client for analyses. All claims, including those for negligence and any other cause whatsoever shall be deemed waived unless made in writing and received by Cardinal within thirty (30) days after completion of the applicable service. In no event shall Cardinal be liable for incidental or consequential damages, including, without limitation, business interruptions, loss of use, or loss of profits incurred by client, its subsidiaries, affiliates or successors arising out of or related to the performance of the services hereunder by Cardinal, regardless of whether such claim is based upon any of the above stated reasons or otherwise. Results relate only to the samples identified above. This report shall not be reproduced except in full with written approval of Cardinal Laboratories.



Celey D. Keene, Lab Director/Quality Manager

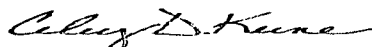
Notes and Definitions

| | |
|-------|--|
| QM-4X | The spike recovery was outside of QC acceptance limits for the MS and/or MSD due to analyte concentration at 4 times or greater the spike concentration. The QC batch was accepted based on LCS and/or LCSD recoveries within the acceptance limits. |
| ND | Analyte NOT DETECTED at or above the reporting limit |
| RPD | Relative Percent Difference |
| ** | Samples not received at proper temperature of 6°C or below. |
| *** | Insufficient time to reach temperature. |
| - | Chloride by SM4500Cl-B does not require samples be received at or below 6°C Samples reported on an as received basis (wet) unless otherwise noted on report |

Cardinal Laboratories

*=Accredited Analyte

PLEASE NOTE: Liability and Damages. Cardinal's liability and client's exclusive remedy for any claim arising, whether based in contract or tort, shall be limited to the amount paid by client for analyses. All claims, including those for negligence and any other cause whatsoever shall be deemed waived unless made in writing and received by Cardinal within thirty (30) days after completion of the applicable service. In no event shall Cardinal be liable for incidental or consequential damages, including, without limitation, business interruptions, loss of use, or loss of profits incurred by client, its subsidiaries, affiliates or successors arising out of or related to the performance of the services hereunder by Cardinal, regardless of whether such claim is based upon any of the above stated reasons or otherwise. Results relate only to the samples identified above. This report shall not be reproduced except in full with written approval of Cardinal Laboratories.



Celest D. Keene, Lab Director/Quality Manager



(575) 393-2326 FAX (575) 393-2476

Page 10 of 10

† Cardinal cannot accept verbal changes. Please fax written changes to 575-393-2476

May 15, 2014

JOEL LOWRY

Basin Environmental Service

P.O. Box 301

Lovington, NM 88260

RE: JRU-21 SWD AQUILLA #8 DIESEL SPILL

Enclosed are the results of analyses for samples received by the laboratory on 05/08/14 10:04.

Cardinal Laboratories is accredited through Texas NELAP under certificate number T104704398-13-5. Accreditation applies to drinking water, non-potable water and solid and chemical materials. All accredited analytes are denoted by an asterisk (*). For a complete list of accredited analytes and matrices visit the TCEQ website at www.tceq.texas.gov/field/ga/lab_accred_certif.html.

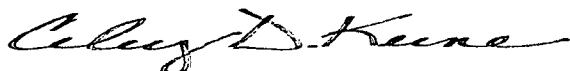
Cardinal Laboratories is accredited through the State of Colorado Department of Public Health and Environment for:

| | |
|------------------|------------------------------|
| Method EPA 552.2 | Haloacetic Acids (HAA-5) |
| Method EPA 524.2 | Total Trihalomethanes (TTHM) |
| Method EPA 524.4 | Regulated VOCs (V1, V2, V3) |

Accreditation applies to public drinking water matrices.

This report meets NELAP requirements and is made up of a cover page, analytical results, and a copy of the original chain-of-custody. If you have any questions concerning this report, please feel free to contact me.

Sincerely,



Celey D. Keene

Lab Director/Quality Manager

Analytical Results For:

 Basin Environmental Service
 JOEL LOWRY
 P.O. Box 301
 Lovington NM, 88260
 Fax To: (575) 396-1429

| | | | |
|-------------------|------------------------------------|---------------------|---------------|
| Received: | 05/08/2014 | Sampling Date: | 05/07/2014 |
| Reported: | 05/15/2014 | Sampling Type: | Soil |
| Project Name: | JRU-21 SWD AQUILLA #8 DIESEL SPILL | Sampling Condition: | Cool & Intact |
| Project Number: | NONE GIVEN | Sample Received By: | Jodi Henson |
| Project Location: | EDDY COUNTY, NM | | |

Sample ID: NSW (H401397-01)

| BTX 8260B | | mg/kg | | Analyzed By: ms | | | | | |
|----------------|--------|-----------------|------------|-----------------|------|------------|---------------|-------|-----------|
| Analyte | Result | Reporting Limit | Analyzed | Method Blank | BS | % Recovery | True Value QC | RPD | Qualifier |
| Benzene* | <0.050 | 0.050 | 05/14/2014 | ND | 2.57 | 128 | 2.00 | 1.88 | |
| Toluene* | <0.050 | 0.050 | 05/14/2014 | ND | 2.46 | 123 | 2.00 | 0.702 | |
| Ethylbenzene* | <0.050 | 0.050 | 05/14/2014 | ND | 2.31 | 115 | 2.00 | 1.10 | |
| Total Xylenes* | <0.150 | 0.150 | 05/14/2014 | ND | 7.02 | 117 | 6.00 | 0.363 | |
| Total BTX | <0.300 | 0.300 | 05/14/2014 | ND | | | | | |

Surrogate: Dibromofluoromethane 96.0 % 61.3-142

Surrogate: Toluene-d8 101 % 71.3-129

Surrogate: 4-Bromofluorobenzene 115 % 65.7-141

| TPH 8015M | | mg/kg | | Analyzed By: MS | | | | | |
|------------------|--------|-----------------|------------|-----------------|-----|------------|---------------|-------|-----------|
| Analyte | Result | Reporting Limit | Analyzed | Method Blank | BS | % Recovery | True Value QC | RPD | Qualifier |
| GRO C6-C10 | <10.0 | 10.0 | 05/12/2014 | ND | 195 | 97.3 | 200 | 0.174 | |
| DRO >C10-C28 | 764 | 10.0 | 05/12/2014 | ND | 205 | 102 | 200 | 0.686 | |
| EXT DRO >C28-C35 | 29.7 | 10.0 | 05/12/2014 | ND | | | | | |

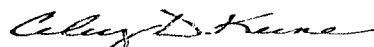
Surrogate: 1-Chlorooctane 110 % 65.2-140

Surrogate: 1-Chlorooctadecane 129 % 63.6-154

Cardinal Laboratories

*=Accredited Analyte

PLEASE NOTE: Liability and Damages. Cardinal's liability and client's exclusive remedy for any claim arising, whether based in contract or tort, shall be limited to the amount paid by client for analyses. All claims, including those for negligence and any other cause whatsoever shall be deemed waived unless made in writing and received by Cardinal within thirty (30) days after completion of the applicable service. In no event shall Cardinal be liable for incidental or consequential damages, including, without limitation, business interruptions, loss of use, or loss of profits incurred by client, its subsidiaries, affiliates or successors arising out of or related to the performance of the services hereunder by Cardinal, regardless of whether such claim is based upon any of the above stated reasons or otherwise. Results relate only to the samples identified above. This report shall not be reproduced except in full with written approval of Cardinal Laboratories.



Celey D. Keene, Lab Director/Quality Manager

Analytical Results For:

Basin Environmental Service
JOEL LOWRY
P.O. Box 301
Lovington NM, 88260
Fax To: (575) 396-1429

| | | | |
|-------------------|------------------------------------|---------------------|---------------|
| Received: | 05/08/2014 | Sampling Date: | 05/07/2014 |
| Reported: | 05/15/2014 | Sampling Type: | Soil |
| Project Name: | JRU-21 SWD AQUILLA #8 DIESEL SPILL | Sampling Condition: | Cool & Intact |
| Project Number: | NONE GIVEN | Sample Received By: | Jodi Henson |
| Project Location: | EDDY COUNTY, NM | | |

Sample ID: WSW (H401397-02)

| TPH 8015M | mg/kg | | Analyzed By: MS | | | | | | |
|-------------------------------|--------|-----------------|-----------------|--------------|-----|------------|---------------|-------|-----------|
| Analyte | Result | Reporting Limit | Analyzed | Method Blank | BS | % Recovery | True Value QC | RPD | Qualifier |
| GRO C6-C10 | <10.0 | 10.0 | 05/12/2014 | ND | 195 | 97.3 | 200 | 0.174 | |
| DRO >C10-C28 | <10.0 | 10.0 | 05/12/2014 | ND | 205 | 102 | 200 | 0.686 | |
| EXT DRO >C28-C35 | <10.0 | 10.0 | 05/12/2014 | ND | | | | | |
| <hr/> | | | | | | | | | |
| Surrogate: 1-Chlorooctane | 120 % | 65.2-140 | | | | | | | |
| Surrogate: 1-Chlorooctadecane | 120 % | 63.6-154 | | | | | | | |

Sample ID: PA-NSW (H401397-03)

| TPH 8015M | mg/kg | | Analyzed By: MS | | | | | | |
|-------------------------------|--------|-----------------|-----------------|--------------|-----|------------|---------------|-------|-----------|
| Analyte | Result | Reporting Limit | Analyzed | Method Blank | BS | % Recovery | True Value QC | RPD | Qualifier |
| GRO C6-C10 | <10.0 | 10.0 | 05/12/2014 | ND | 195 | 97.3 | 200 | 0.174 | |
| DRO >C10-C28 | <10.0 | 10.0 | 05/12/2014 | ND | 205 | 102 | 200 | 0.686 | |
| EXT DRO >C28-C35 | <10.0 | 10.0 | 05/12/2014 | ND | | | | | |
| <hr/> | | | | | | | | | |
| Surrogate: 1-Chlorooctane | 98.2 % | 65.2-140 | | | | | | | |
| Surrogate: 1-Chlorooctadecane | 95.2 % | 63.6-154 | | | | | | | |

Cardinal Laboratories

*=Accredited Analyte

PLEASE NOTE: Liability and Damages. Cardinal's liability and client's exclusive remedy for any claim arising, whether based in contract or tort, shall be limited to the amount paid by client for analyses. All claims, including those for negligence and any other cause whatsoever shall be deemed waived unless made in writing and received by Cardinal within thirty (30) days after completion of the applicable service. In no event shall Cardinal be liable for incidental or consequential damages, including, without limitation, business interruptions, loss of use, or loss of profits incurred by client, its subsidiaries, affiliates or successors arising out of or related to the performance of the services hereunder by Cardinal, regardless of whether such claim is based upon any of the above stated reasons or otherwise. Results relate only to the samples identified above. This report shall not be reproduced except in full with written approval of Cardinal Laboratories.



Celey D. Keene, Lab Director/Quality Manager

Analytical Results For:

Basin Environmental Service
JOEL LOWRY
P.O. Box 301
Lovington NM, 88260
Fax To: (575) 396-1429

Received: 05/08/2014
Reported: 05/15/2014
Project Name: JRU-21 SWD AQUILLA #8 DIESEL SPILL
Project Number: NONE GIVEN
Project Location: EDDY COUNTY, NM

Sampling Date: 05/07/2014
Sampling Type: Soil
Sampling Condition: Cool & Intact
Sample Received By: Jodi Henson

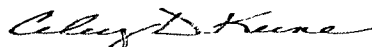
Sample ID: PA-FLOOR @ 10' (H401397-04)

| TPH 8015M | | mg/kg | | Analyzed By: MS | | | | | | |
|-------------------------------|--------|-----------------|------------|-----------------|-----|------------|---------------|-------|-----------|--|
| Analyte | Result | Reporting Limit | Analyzed | Method Blank | BS | % Recovery | True Value QC | RPD | Qualifier | |
| GRO C6-C10 | <10.0 | 10.0 | 05/12/2014 | ND | 195 | 97.3 | 200 | 0.174 | | |
| DRO >C10-C28 | <10.0 | 10.0 | 05/12/2014 | ND | 205 | 102 | 200 | 0.686 | | |
| EXT DRO >C28-C35 | <10.0 | 10.0 | 05/12/2014 | ND | | | | | | |
| <hr/> | | | | | | | | | | |
| Surrogate: 1-Chlorooctane | 120 % | 65.2-140 | | | | | | | | |
| Surrogate: 1-Chlorooctadecane | 121 % | 63.6-154 | | | | | | | | |

Cardinal Laboratories

*=Accredited Analyte

PLEASE NOTE: Liability and Damages. Cardinal's liability and client's exclusive remedy for any claim arising, whether based in contract or tort, shall be limited to the amount paid by client for analyses. All claims, including those for negligence and any other cause whatsoever shall be deemed waived unless made in writing and received by Cardinal within thirty (30) days after completion of the applicable service. In no event shall Cardinal be liable for incidental or consequential damages, including, without limitation, business interruptions, loss of use, or loss of profits incurred by client, its subsidiaries, affiliates or successors arising out of or related to the performance of the services hereunder by Cardinal, regardless of whether such claim is based upon any of the above stated reasons or otherwise. Results relate only to the samples identified above. This report shall not be reproduced except in full with written approval of Cardinal Laboratories.



Celey D. Keene, Lab Director/Quality Manager

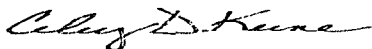
Notes and Definitions

| | |
|-----|--|
| ND | Analyte NOT DETECTED at or above the reporting limit |
| RPD | Relative Percent Difference |
| ** | Samples not received at proper temperature of 6°C or below. |
| *** | Insufficient time to reach temperature. |
| - | Chloride by SM4500Cl-B does not require samples be received at or below 6°C Samples reported on an as received basis (wet) unless otherwise noted on report |

Cardinal Laboratories

*=Accredited Analyte

PLEASE NOTE: Liability and Damages. Cardinal's liability and client's exclusive remedy for any claim arising, whether based in contract or tort, shall be limited to the amount paid by client for analyses. All claims, including those for negligence and any other cause whatsoever shall be deemed waived unless made in writing and received by Cardinal within thirty (30) days after completion of the applicable service. In no event shall Cardinal be liable for incidental or consequential damages, including, without limitation, business interruptions, loss of use, or loss of profits incurred by client, its subsidiaries, affiliates or successors arising out of or related to the performance of the services hereunder by Cardinal, regardless of whether such claim is based upon any of the above stated reasons or otherwise. Results relate only to the samples identified above. This report shall not be reproduced except in full with written approval of Cardinal Laboratories.



Celey D. Keene, Lab Director/Quality Manager

**CARDINAL LABORATORIES**

101 East Marland, Hobbs, NM 88240

(575) 393-2326 FAX (575) 393-2476

CHAIN-OF-CUSTODY AND ANALYSIS REQUEST

Page 6 of 6

| | | | | | | | | | | | | | | | | | | | | | | | | | | | | | |
|---|--|----------------------|--|-------------------------|--|-------------------|--|--|--|--|--|------------|--|----------|--|------|--|--|--|--|--|--|--|--|--|--|--|--|--|
| Company Name: Basin Environmental Service Technologies, LLC | | | | BILL TO | | | | ANALYSIS REQUEST | | | | | | | | | | | | | | | | | | | | | |
| Project Manager: Joel Lowry | | | | P.O. #: | | | | <div style="display: flex; flex-direction: column; align-items: center;"> <div>Chloride</div> <div>TPH (8015M)</div> <div>BTEX (8021B) added 5/7/14</div> <div>HOLD FOR TPH</div> </div> | | | | | | | | | | | | | | | | | | | | | |
| Address: P.O. Box 301 | | | | Company: BOPCO, LP | | | | | | | | | | | | | | | | | | | | | | | | | |
| City: Lovington | | State: NM | | Zip: 88260 | | Attn: Tony Savoie | | | | | | | | | | | | | | | | | | | | | | | |
| Phone #: (575)396-2378 | | Fax #: (575)396-1429 | | Address: 522 W. Marland | | City: Carlsbad | | | | | | | | | | | | | | | | | | | | | | | |
| Project #: | | Project Owner: | | State: NM | | Zip: 88220 | | | | | | | | | | | | | | | | | | | | | | | |
| Project Name: JRU-21 SWD Aquila #8 Diesel Spill | | | | Phone #: (432)556-8730 | | Fax #: | | | | | | | | | | | | | | | | | | | | | | | |
| Project Location: Eddy Co., NM | | | | | | | | | | | | | | | | | | | | | | | | | | | | | |
| Sampler Name: JOEL LOWRY | | | | | | | | | | | | | | | | | | | | | | | | | | | | | |
| FOR LAB USE ONLY | | | | | | | | | | | | | | | | | | | | | | | | | | | | | |
| Lab I.D. | | Sample I.D. | | G/RAB OR (C)OMP. | | # CONTAINERS | | MATRIX | | | | PRESERV. | | SAMPLING | | | | | | | | | | | | | | | |
| | | | | | | | | GROUNDWATER | | | | ACID/BASE: | | DATE | | TIME | | | | | | | | | | | | | |
| | | | | | | | | WASTEWATER | | | | ICE / COOL | | | | | | | | | | | | | | | | | |
| | | | | | | | | SOIL | | | | OTHER: | | | | | | | | | | | | | | | | | |
| | | | | | | | | OIL | | | | | | | | | | | | | | | | | | | | | |
| | | | | | | | | SLUDGE | | | | | | | | | | | | | | | | | | | | | |
| | | | | | | | | OTHER: | | | | | | | | | | | | | | | | | | | | | |
| | | | | | | | | | | | | | | | | | | | | | | | | | | | | | |
| H401397 | | | | | | | | | | | | | | | | | | | | | | | | | | | | | |
| 1 | | NSW | | C | | 1 | | | | | | C | | 5/7/14 | | 1115 | | | | | | | | | | | | | |
| 2 | | WSW | | C | | 1 | | | | | | C | | 5/7/14 | | 1130 | | | | | | | | | | | | | |
| 3 | | PA-NSW | | C | | 1 | | | | | | C | | 5/7/14 | | 1145 | | | | | | | | | | | | | |
| 4 | | PA-Floor @ 10' | | C | | 1 | | | | | | C | | 5/7/14 | | 1200 | | | | | | | | | | | | | |

PLEASE NOTE: Liability and Damages. Cardinal's liability and client's exclusive remedy for any claim arising whether based in contract or tort, shall be limited to the amount paid by the client for the analyses. All claims including those for negligence and any other cause whatsoever shall be deemed waived unless made in writing and received by Cardinal within 30 days after completion of the applicable service. In no event shall Cardinal be liable for incidental or consequential damages, including without limitation, business interruptions, loss of use, or loss of profits incurred by client, its subsidiaries, affiliates or successors arising out of or related to the performance of services hereunder by Cardinal, regardless of whether such claim is based upon any of the above stated reasons or otherwise.

| | | | | | | | | | |
|------------------------------------|--|--------------|--|--|--|---|--|----------------|--|
| Relinquished By: <i>Joel Lowry</i> | | Date: 5/6/14 | | Received By: <i>B. Blahnik</i> | | Phone Result: <input type="checkbox"/> Yes <input type="checkbox"/> No | | Add'l Phone #: | |
| Time: 7:23 | | Time: 5-8-14 | | Time: 10:04 | | Fax Result: <input type="checkbox"/> Yes <input type="checkbox"/> No | | Add'l Fax #: | |
| Relinquished By: <i>B. Blahnik</i> | | Date: 5-8-14 | | Received By: <i>Jodi Benson</i> | | REMARKS: HOLD FOR TPH-BTEX Please email results to pm@basinenv.com, TASavoie@BassPet.com & SJWalters@BassPet.com | | | |
| Delivered By: (Circle One) | | Time: 10:04 | | Time: 10:04 | | | | | |
| Sampler - UPS - Bus - Other: | | 5.60 | | Sample Condition | | | | | |
| | | | | Cool Intact | | CHECKED BY: <i>[Signature]</i> | | | |
| | | | | <input type="checkbox"/> Yes <input type="checkbox"/> No | | | | | |
| | | | | <input type="checkbox"/> Yes <input type="checkbox"/> No | | | | | |

FORM-006
Revision 1.0

† Cardinal cannot accept verbal changes. Please fax written changes to 575-393-2476

#54

May 16, 2014

TONY SAVOIE

Bass Enterprises

522 W. Mermod #709

Carlsbad, NM 88220

RE: JRU-21 SWD #1

Enclosed are the results of analyses for samples received by the laboratory on 05/02/14 13:34.

Cardinal Laboratories is accredited through Texas NELAP under certificate number T104704398-13-5. Accreditation applies to drinking water, non-potable water and solid and chemical materials. All accredited analytes are denoted by an asterisk (*). For a complete list of accredited analytes and matrices visit the TCEQ website at www.tceq.texas.gov/field/qa/lab_accred_certif.html.

Cardinal Laboratories is accredited through the State of Colorado Department of Public Health and Environment for:

| | |
|------------------|--------------------------------|
| Method EPA 552.2 | Total Haloacetic Acids (HAA-5) |
| Method EPA 524.2 | Total Trihalomethanes (TTHM) |
| Method EPA 524.4 | Regulated VOCs (V1, V2, V3) |

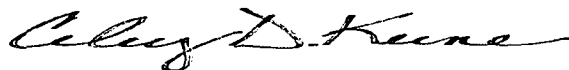
Cardinal Laboratories is accredited through the State of New Mexico Environment Department for:

| | |
|------------------|---|
| Method SM 9223-B | Total Coliform and E. coli (Colilert MMO-MUG) |
| Method EPA 524.2 | Regulated VOCs and Total Trihalomethanes (TTHM) |
| Method EPA 552.2 | Total Haloacetic Acids (HAA-5) |

Accreditation applies to public drinking water matrices for State of Colorado and New Mexico.

This report meets NELAP requirements and is made up of a cover page, analytical results, and a copy of the original chain-of-custody. If you have any questions concerning this report, please feel free to contact me.

Sincerely,



Celey D. Keene
Lab Director/Quality Manager

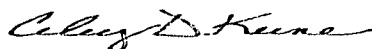
Analytical Results For:Bass Enterprises
522 W. Mermod #709
Carlsbad NM, 88220Project: JRU-21 SWD #1
Project Number: NONE GIVEN
Project Manager: TONY SAVOIE
Fax To: (505) 887-7473Reported:
16-May-14 16:20

| Sample ID | Laboratory ID | Matrix | Date Sampled | Date Received |
|-------------|---------------|--------|-----------------|-----------------|
| COMPOSITE 1 | H401347-01 | Soil | 02-May-14 09:00 | 02-May-14 13:34 |

Cardinal Laboratories

*=Accredited Analyte

PLEASE NOTE: Liability and Damages. Cardinal's liability and client's exclusive remedy for any claim arising, whether based in contract or tort, shall be limited to the amount paid by client for analyses. All claims, including those for negligence and any other cause whatsoever shall be deemed waived unless made in writing and received by Cardinal within thirty (30) days after completion of the applicable service. In no event shall Cardinal be liable for incidental or consequential damages, including, without limitation, business interruptions, loss of use, or loss of profits incurred by client, its subsidiaries, affiliates or successors arising out of or related to the performance of the services hereunder by Cardinal, regardless of whether such claim is based upon any of the above stated reasons or otherwise. Results relate only to the samples identified above. This report shall not be reproduced except in full with written approval of Cardinal Laboratories.



Celest D. Keene, Lab Director/Quality Manager

Analytical Results For:

 Bass Enterprises
 522 W. Mermod #709
 Carlsbad NM, 88220

 Project: JRU-21 SWD #1
 Project Number: NONE GIVEN
 Project Manager: TONY SAVOIE
 Fax To: (505) 887-7473

 Reported:
 16-May-14 16:20

COMPOSITE 1
H401347-01 (Soil)

| Analyte | Result | MDL | Reporting Limit | Units | Dilution | Batch | Analyst | Analyzed | Method | Notes |
|---------|--------|-----|-----------------|-------|----------|-------|---------|----------|--------|-------|
|---------|--------|-----|-----------------|-------|----------|-------|---------|----------|--------|-------|

Cardinal Laboratories
Inorganic Compounds

| | | | | | | | | | | |
|------------------|--------|--|--------|----------|---|---------|----|-----------|--------------|--|
| Ignitability | > 140 | | | °F | I | 4031305 | AP | 13-May-14 | ASTM D 93-80 | |
| pH* | 7.41 | | 0.100 | pH Units | I | 4050910 | AP | 09-May-14 | 9045 | |
| Reactive Cyanide | ND | | 0.100 | mg/kg | I | 4051611 | AP | 16-May-14 | 9010 | |
| Reactive Sulfide | 0.0100 | | 0.0100 | mg/kg | I | 4051611 | AP | 16-May-14 | 9030 | |

TCLP Volatile Organic Compounds by GCMS

| | | | | | | | | | | |
|---------------------------------|----|--|--------|----------|-----|---------|----|-----------|------------|--|
| Benzene* | ND | | 0.050 | mg/L | 100 | 4050608 | ms | 07-May-14 | 1311/8260B | |
| Toluene* | ND | | 0.050 | mg/L | 100 | 4050608 | ms | 07-May-14 | 1311/8260B | |
| Ethylbenzene* | ND | | 0.050 | mg/L | 100 | 4050608 | ms | 07-May-14 | 1311/8260B | |
| m+p - Xylene | ND | | 0.100 | mg/L | 100 | 4050608 | ms | 07-May-14 | 1311/8260B | |
| Total Xylenes* | ND | | 0.150 | mg/L | 100 | 4050608 | ms | 07-May-14 | 1311/8260B | |
| o-Xylene | ND | | 0.050 | mg/L | 100 | 4050608 | ms | 07-May-14 | 1311/8260B | |
| Surrogate: Dibromofluoromethane | | | 98.9 % | 87.3-113 | | 4050608 | ms | 07-May-14 | 1311/8260B | |
| Surrogate: Toluene-d8 | | | 106 % | 89.6-110 | | 4050608 | ms | 07-May-14 | 1311/8260B | |
| Surrogate: 4-Bromofluorobenzene | | | 109 % | 82.3-119 | | 4050608 | ms | 07-May-14 | 1311/8260B | |

Petroleum Hydrocarbons by GC FID
S-04

| | | | | | | | | | | |
|-------------------------------|------|--|-------|----------|---|---------|----|-----------|-------|--|
| GRO C6-C10 | 236 | | 10.0 | mg/kg | I | 4051301 | MS | 13-May-14 | 8015B | |
| DRO >C10-C28 | 8730 | | 10.0 | mg/kg | I | 4051301 | MS | 13-May-14 | 8015B | |
| EXT DRO >C28-C35 | 122 | | 10.0 | mg/kg | I | 4051301 | MS | 13-May-14 | 8015B | |
| Surrogate: 1-Chlorooctane | | | 269 % | 65.2-140 | | 4051301 | MS | 13-May-14 | 8015B | |
| Surrogate: 1-Chlorooctadecane | | | 277 % | 63.6-154 | | 4051301 | MS | 13-May-14 | 8015B | |

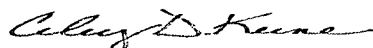
Green Analytical Laboratories
TCLP Metals by ICP

| | | | | | | | | | | |
|---------|----|--|-------|------|---|---------|-----|-----------|---------------------|--|
| Arsenic | ND | | 0.100 | mg/L | I | B405110 | JGS | 14-May-14 | EPA200.7/60 10 B | |
|---------|----|--|-------|------|---|---------|-----|-----------|---------------------|--|

Cardinal Laboratories

* = Accredited Analyte

PLEASE NOTE: Liability and Damages. Cardinal's liability and client's exclusive remedy for any claim arising, whether based in contract or tort, shall be limited to the amount paid by client for analyses. All claims, including those for negligence and any other cause whatsoever shall be deemed waived unless made in writing and received by Cardinal within thirty (30) days after completion of the applicable service. In no event shall Cardinal be liable for incidental or consequential damages, including, without limitation, business interruptions, loss of use, or loss of profits incurred by client, its subsidiaries, affiliates or successors arising out of or related to the performance of the services hereunder by Cardinal, regardless of whether such claim is based upon any of the above stated reasons or otherwise. Results relate only to the samples identified above. This report shall not be reproduced except in full with written approval of Cardinal Laboratories.



Celey D. Keene, Lab Director/Quality Manager

Analytical Results For:

Bass Enterprises
522 W. Mermod #709
Carlsbad NM, 88220

Project: JRU-21 SWD #1
Project Number: NONE GIVEN
Project Manager: TONY SAVOIE
Fax To: (505) 887-7473

Reported:
16-May-14 16:20

COMPOSITE 1
H401347-01 (Soil)

| Analyte | Result | MDL | Reporting Limit | Units | Dilution | Batch | Analyst | Analyzed | Method | Notes |
|---------|--------|-----|--------------------|-------|----------|-------|---------|----------|--------|-------|
|---------|--------|-----|--------------------|-------|----------|-------|---------|----------|--------|-------|

Green Analytical Laboratories
TCLP Metals by ICP

| | | | | | | | | | | |
|----------|-------|--|-------|------|---|---------|-----|-----------|---------------------|--|
| Barium | 0.518 | | 0.040 | mg/L | 1 | B405110 | JGS | 14-May-14 | EPA200.7/60 10 B | |
| Cadmium | ND | | 0.050 | mg/L | 1 | B405110 | JGS | 14-May-14 | EPA200.7/60 10 B | |
| Chromium | ND | | 0.050 | mg/L | 1 | B405110 | JGS | 14-May-14 | EPA200.7/60 10 B | |
| Lead | ND | | 0.100 | mg/L | 1 | B405110 | JGS | 14-May-14 | EPA200.7/60 10 B | |
| Selenium | ND | | 0.200 | mg/L | 1 | B405110 | JGS | 14-May-14 | EPA200.7/60 10 B | |
| Silver | ND | | 0.050 | mg/L | 1 | B405110 | JGS | 14-May-14 | EPA200.7/60 10 B | |

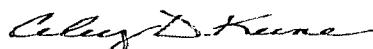
TCLP Mercury by CVAA

| | | | | | | | | | | |
|---------|----|--|--------|------|---|---------|-----|-----------|-------|--|
| Mercury | ND | | 0.0002 | mg/L | 1 | B405133 | JGS | 15-May-14 | 245.1 | |
|---------|----|--|--------|------|---|---------|-----|-----------|-------|--|

Cardinal Laboratories

*=Accredited Analyte

PLEASE NOTE: Liability and Damages. Cardinal's liability and client's exclusive remedy for any claim arising, whether based in contract or tort, shall be limited to the amount paid by client for analyses. All claims, including those for negligence and any other cause whatsoever shall be deemed waived unless made in writing and received by Cardinal within thirty (30) days after completion of the applicable service. In no event shall Cardinal be liable for incidental or consequential damages, including, without limitation, business interruptions, loss of use, or loss of profits incurred by client, its subsidiaries, affiliates or successors arising out of or related to the performance of the services hereunder by Cardinal, regardless of whether such claim is based upon any of the above stated reasons or otherwise. Results relate only to the samples identified above. This report shall not be reproduced except in full with written approval of Cardinal Laboratories.



Celey D. Keene, Lab Director/Quality Manager

Analytical Results For:

Bass Enterprises
522 W. Mermod #709
Carlsbad NM, 88220

Project: JRU-21 SWD #1
Project Number: NONE GIVEN
Project Manager: TONY SAVOIE
Fax To: (505) 887-7473

Reported:
16-May-14 16:20

Inorganic Compounds - Quality Control

Cardinal Laboratories

| Analyte | Result | Reporting Limit | Units | Spike Level | Source Result | %REC | %REC Limits | RPD | RPD Limit | Notes |
|---------|--------|-----------------|-------|-------------|---------------|------|-------------|-----|-----------|-------|
|---------|--------|-----------------|-------|-------------|---------------|------|-------------|-----|-----------|-------|

Batch 4031305 - NO PREP

LCS (4031305-BS1)

Prepared & Analyzed: 13-Mar-14

| | | | | | | |
|--------------|------|--|----|------|-----|----------|
| Ignitability | 80.0 | | °F | 77.0 | 104 | 97.5-105 |
|--------------|------|--|----|------|-----|----------|

Duplicate (4031305-DUP1)

Source: H400611-01

Prepared: 13-Mar-14 Analyzed: 19-Mar-14

| | | | | | | |
|--------------|-------|--|----|------|--|----|
| Ignitability | > 140 | | °F | 0.00 | | 20 |
|--------------|-------|--|----|------|--|----|

Batch 4050910 - NO PREP

LCS (4050910-BS1)

Prepared & Analyzed: 09-May-14

| | | | | | | |
|----|------|--|----------|------|-----|--------|
| pH | 7.00 | | pH Units | 7.00 | 100 | 90-110 |
|----|------|--|----------|------|-----|--------|

Duplicate (4050910-DUP1)

Source: H401324-03

Prepared & Analyzed: 09-May-14

| | | | | | | |
|----|------|-------|----------|------|-------|----|
| pH | 7.92 | 0.100 | pH Units | 7.86 | 0.760 | 20 |
|----|------|-------|----------|------|-------|----|

Batch 4051611 - General Prep - Wet Chem

Blank (4051611-BLK1)

Prepared & Analyzed: 16-May-14

| | | | |
|------------------|----|--------|-------|
| Reactive Cyanide | ND | 0.100 | mg/kg |
| Reactive Sulfide | ND | 0.0100 | mg/kg |

Duplicate (4051611-DUP1)

Source: H401347-01

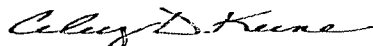
Prepared & Analyzed: 16-May-14

| | | | | | | |
|------------------|--------|--------|-------|--------|------|----|
| Reactive Sulfide | 0.0200 | 0.0100 | mg/kg | 0.0100 | 66.7 | 20 |
| Reactive Cyanide | ND | 0.100 | mg/kg | 0.00 | | 20 |

Cardinal Laboratories

*=Accredited Analyte

PLEASE NOTE: Liability and Damages. Cardinal's liability and client's exclusive remedy for any claim arising, whether based in contract or tort, shall be limited to the amount paid by client for analyses. All claims, including those for negligence and any other cause whatsoever shall be deemed waived unless made in writing and received by Cardinal within thirty (30) days after completion of the applicable service. In no event shall Cardinal be liable for incidental or consequential damages, including, without limitation, business interruptions, loss of use, or loss of profits incurred by client, its subsidiaries, affiliates or successors arising out of or related to the performance of the services hereunder by Cardinal, regardless of whether such claim is based upon any of the above stated reasons or otherwise. Results relate only to the samples identified above. This report shall not be reproduced except in full with written approval of Cardinal Laboratories.



Celest D. Keene, Lab Director/Quality Manager

Analytical Results For:

 Bass Enterprises
 522 W. Mermod #709
 Carlsbad NM, 88220

 Project: JRU-21 SWD #1
 Project Number: NONE GIVEN
 Project Manager: TONY SAVOIE
 Fax To: (505) 887-7473

 Reported:
 16-May-14 16:20

TCLP Volatile Organic Compounds by GCMS - Quality Control
Cardinal Laboratories

| Analyte | Result | Reporting Limit | Units | Spike Level | Source Result | %REC | %REC Limits | RPD | RPD Limit | Notes |
|---------|--------|-----------------|-------|-------------|---------------|------|-------------|-----|-----------|-------|
|---------|--------|-----------------|-------|-------------|---------------|------|-------------|-----|-----------|-------|

Batch 4050608 - Volatiles
Blank (4050608-BLK1)

Prepared & Analyzed: 06-May-14

| | | | | | | | | | | |
|---------------------------------|---------|--------|------|--------|--|------|----------|--|--|--|
| Benzene | ND | 0.0005 | mg/L | | | | | | | |
| Toluene | ND | 0.0005 | mg/L | | | | | | | |
| Ethylbenzene | ND | 0.0005 | mg/L | | | | | | | |
| m+p - Xylene | ND | 0.001 | mg/L | | | | | | | |
| o-Xylene | ND | 0.0005 | mg/L | | | | | | | |
| Total Xylenes | ND | 0.002 | mg/L | | | | | | | |
| Surrogate: Dibromofluoromethane | 0.00979 | | mg/L | 0.0100 | | 97.9 | 87.3-113 | | | |
| Surrogate: Toluene-d8 | 0.0103 | | mg/L | 0.0100 | | 103 | 89.6-110 | | | |
| Surrogate: 4-Bromofluorobenzene | 0.00969 | | mg/L | 0.0100 | | 96.9 | 82.3-119 | | | |

LCS (4050608-BS1)

Prepared & Analyzed: 06-May-14

| | | | | | | | | | | |
|---------------------------------|--------|--------|------|--------|--|-----|----------|--|--|--|
| Benzene | 0.023 | 0.0005 | mg/L | 0.0200 | | 114 | 86-119 | | | |
| Toluene | 0.023 | 0.0005 | mg/L | 0.0200 | | 114 | 84-118 | | | |
| Ethylbenzene | 0.022 | 0.0005 | mg/L | 0.0200 | | 112 | 83-119 | | | |
| m+p - Xylene | 0.046 | 0.001 | mg/L | 0.0400 | | 115 | 82-122 | | | |
| Total Xylenes | 0.068 | 0.002 | mg/L | 0.0600 | | 114 | 82-122 | | | |
| o-Xylene | 0.023 | 0.0005 | mg/L | 0.0200 | | 113 | 82-121 | | | |
| Surrogate: Dibromofluoromethane | 0.0100 | | mg/L | 0.0100 | | 100 | 87.3-113 | | | |
| Surrogate: Toluene-d8 | 0.0104 | | mg/L | 0.0100 | | 104 | 89.6-110 | | | |
| Surrogate: 4-Bromofluorobenzene | 0.0102 | | mg/L | 0.0100 | | 102 | 82.3-119 | | | |

LCS Dup (4050608-BS1)

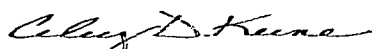
Prepared & Analyzed: 06-May-14

| | | | | | | | | | | |
|---------------------------------|--------|--------|------|--------|--|-----|----------|------|----|--|
| Benzene | 0.022 | 0.0005 | mg/L | 0.0200 | | 110 | 86-119 | 3.67 | 24 | |
| Toluene | 0.022 | 0.0005 | mg/L | 0.0200 | | 109 | 84-118 | 4.36 | 24 | |
| Ethylbenzene | 0.021 | 0.0005 | mg/L | 0.0200 | | 107 | 83-119 | 4.97 | 25 | |
| m+p - Xylene | 0.044 | 0.001 | mg/L | 0.0400 | | 110 | 82-122 | 4.07 | 25 | |
| o-Xylene | 0.021 | 0.0005 | mg/L | 0.0200 | | 107 | 82-121 | 5.45 | 25 | |
| Total Xylenes | 0.065 | 0.002 | mg/L | 0.0600 | | 109 | 82-122 | 4.53 | 25 | |
| Surrogate: Dibromofluoromethane | 0.0102 | | mg/L | 0.0100 | | 102 | 87.3-113 | | | |
| Surrogate: Toluene-d8 | 0.0103 | | mg/L | 0.0100 | | 103 | 89.6-110 | | | |
| Surrogate: 4-Bromofluorobenzene | 0.0102 | | mg/L | 0.0100 | | 102 | 82.3-119 | | | |

Cardinal Laboratories

*=Accredited Analyte

PLEASE NOTE: Liability and Damages. Cardinal's liability and client's exclusive remedy for any claim arising, whether based in contract or tort, shall be limited to the amount paid by client for analyses. All claims, including those for negligence and any other cause whatsoever shall be deemed waived unless made in writing and received by Cardinal within thirty (30) days after completion of the applicable service. In no event shall Cardinal be liable for incidental or consequential damages, including, without limitation, business interruptions, loss of use, or loss of profits incurred by client, its subsidiaries, affiliates or successors arising out of or related to the performance of the services hereunder by Cardinal, regardless of whether such claim is based upon any of the above stated reasons or otherwise. Results relate only to the samples identified above. This report shall not be reproduced except in full with written approval of Cardinal Laboratories.



Celey D. Keene, Lab Director/Quality Manager

Analytical Results For:

Bass Enterprises
522 W. Mermod #709
Carlsbad NM, 88220

Project: JRU-21 SWD #1
Project Number: NONE GIVEN
Project Manager: TONY SAVOIE
Fax To: (505) 887-7473

Reported:
16-May-14 16:20

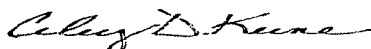
Petroleum Hydrocarbons by GC FID - Quality Control
Cardinal Laboratories

| Analyte | Result | Reporting Limit | Units | Spike Level | Source Result | %REC | %REC Limits | RPD | RPD Limit | Notes |
|--|--------|-----------------|-------|--------------------------------|---------------|------|-------------|------|-----------|-------|
| Batch 4051301 - General Prep - Organics | | | | | | | | | | |
| Blank (4051301-BLK1) | | | | Prepared & Analyzed: 13-May-14 | | | | | | |
| GRO C6-C10 | ND | 10.0 | mg/kg | | | | | | | |
| DRO >C10-C28 | ND | 10.0 | mg/kg | | | | | | | |
| EXT DRO >C28-C35 | ND | 10.0 | mg/kg | | | | | | | |
| Total TPH C6-C28 | ND | 10.0 | mg/kg | | | | | | | |
| Surrogate: 1-Chlorooctane | 61.3 | | mg/kg | 50.0 | | 123 | 65.2-140 | | | |
| Surrogate: 1-Chlorooctadecane | 62.6 | | mg/kg | 50.0 | | 125 | 63.6-154 | | | |
| LCS (4051301-BS1) | | | | Prepared & Analyzed: 13-May-14 | | | | | | |
| GRO C6-C10 | 189 | 10.0 | mg/kg | 200 | | 94.6 | 66.4-124 | | | |
| DRO >C10-C28 | 205 | 10.0 | mg/kg | 200 | | 103 | 61.6-132 | | | |
| Total TPH C6-C28 | 395 | 10.0 | mg/kg | 400 | | 98.6 | 69.7-122 | | | |
| Surrogate: 1-Chlorooctane | 60.7 | | mg/kg | 50.0 | | 121 | 65.2-140 | | | |
| Surrogate: 1-Chlorooctadecane | 64.6 | | mg/kg | 50.0 | | 129 | 63.6-154 | | | |
| LCS Dup (4051301-BS1) | | | | Prepared & Analyzed: 13-May-14 | | | | | | |
| GRO C6-C10 | 196 | 10.0 | mg/kg | 200 | | 98.0 | 66.4-124 | 3.60 | 23.4 | |
| DRO >C10-C28 | 213 | 10.0 | mg/kg | 200 | | 107 | 61.6-132 | 3.63 | 23.1 | |
| Total TPH C6-C28 | 409 | 10.0 | mg/kg | 400 | | 102 | 69.7-122 | 3.61 | 20.6 | |
| Surrogate: 1-Chlorooctane | 63.2 | | mg/kg | 50.0 | | 126 | 65.2-140 | | | |
| Surrogate: 1-Chlorooctadecane | 66.6 | | mg/kg | 50.0 | | 133 | 63.6-154 | | | |

Cardinal Laboratories

*=Accredited Analyte

PLEASE NOTE: Liability and Damages. Cardinal's liability and client's exclusive remedy for any claim arising, whether based in contract or tort, shall be limited to the amount paid by client for analyses. All claims, including those for negligence and any other cause whatsoever shall be deemed waived unless made in writing and received by Cardinal within thirty (30) days after completion of the applicable service. In no event shall Cardinal be liable for incidental or consequential damages, including, without limitation, business interruptions, loss of use, or loss of profits incurred by client, its subsidiaries, affiliates or successors arising out of or related to the performance of the services hereunder by Cardinal, regardless of whether such claim is based upon any of the above stated reasons or otherwise. Results relate only to the samples identified above. This report shall not be reproduced except in full with written approval of Cardinal Laboratories.



Celey D. Keene, Lab Director/Quality Manager

Analytical Results For:

Bass Enterprises
522 W. Mermod #709
Carlsbad NM, 88220

Project: JRU-21 SWD #1
Project Number: NONE GIVEN
Project Manager: TONY SAVOIE
Fax To: (505) 887-7473

Reported:
16-May-14 16:20

TCLP Metals by ICP - Quality Control
Green Analytical Laboratories

| Analyte | Result | Reporting Limit | Units | Spike Level | Source Result | %REC | %REC Limits | RPD | RPD Limit | Notes |
|---------|--------|-----------------|-------|-------------|---------------|------|-------------|-----|-----------|-------|
|---------|--------|-----------------|-------|-------------|---------------|------|-------------|-----|-----------|-------|

Batch B405110 - EPA 3005
Blank (B405110-BLK2)

Prepared: 13-May-14 Analyzed: 14-May-14

| | | | | | | | | | | |
|----------|-------|-------|------|--|--|--|--|--|--|----|
| Chromium | ND | 0.050 | mg/L | | | | | | | |
| Barium | 0.035 | 0.010 | mg/L | | | | | | | B3 |
| Selenium | ND | 0.200 | mg/L | | | | | | | |
| Silver | ND | 0.050 | mg/L | | | | | | | |
| Lead | ND | 0.100 | mg/L | | | | | | | |
| Cadmium | ND | 0.050 | mg/L | | | | | | | |
| Arsenic | ND | 0.100 | mg/L | | | | | | | |

LCS (B405110-BS1)

Prepared: 13-May-14 Analyzed: 14-May-14

| | | | | | | | | | | |
|----------|-------|-------|------|-------|--|------|--------|--|--|--|
| Selenium | 7.97 | 0.200 | mg/L | 8.00 | | 99.6 | 85-115 | | | |
| Silver | 0.090 | 0.050 | mg/L | 0.100 | | 89.8 | 85-115 | | | |
| Lead | 2.02 | 0.100 | mg/L | 2.00 | | 101 | 85-115 | | | |
| Chromium | 2.00 | 0.050 | mg/L | 2.00 | | 100 | 85-115 | | | |
| Arsenic | 3.97 | 0.100 | mg/L | 4.00 | | 99.2 | 85-115 | | | |
| Cadmium | 1.93 | 0.050 | mg/L | 2.00 | | 96.3 | 85-115 | | | |
| Barium | 1.93 | 0.010 | mg/L | 2.00 | | 96.4 | 85-115 | | | |

LCS Dup (B405110-BSD1)

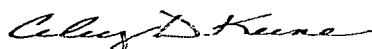
Prepared: 13-May-14 Analyzed: 14-May-14

| | | | | | | | | | | |
|----------|-------|-------|------|-------|--|------|--------|------|----|--|
| Cadmium | 1.96 | 0.050 | mg/L | 2.00 | | 97.9 | 85-115 | 1.65 | 20 | |
| Lead | 1.96 | 0.100 | mg/L | 2.00 | | 97.9 | 85-115 | 3.04 | 20 | |
| Selenium | 7.78 | 0.200 | mg/L | 8.00 | | 97.3 | 85-115 | 2.39 | 20 | |
| Silver | 0.088 | 0.050 | mg/L | 0.100 | | 88.2 | 85-115 | 1.80 | 20 | |
| Barium | 1.88 | 0.010 | mg/L | 2.00 | | 93.8 | 85-115 | 2.74 | 20 | |
| Arsenic | 3.84 | 0.100 | mg/L | 4.00 | | 96.0 | 85-115 | 3.30 | 20 | |
| Chromium | 1.94 | 0.050 | mg/L | 2.00 | | 97.2 | 85-115 | 3.12 | 20 | |

Cardinal Laboratories

*=Accredited Analyte

PLEASE NOTE: Liability and Damages. Cardinal's liability and client's exclusive remedy for any claim arising, whether based in contract or tort, shall be limited to the amount paid by client for analyses. All claims, including those for negligence and any other cause whatsoever shall be deemed waived unless made in writing and received by Cardinal within thirty (30) days after completion of the applicable service. In no event shall Cardinal be liable for incidental or consequential damages, including, without limitation, business interruptions, loss of use, or loss of profits incurred by client, its subsidiaries, affiliates or successors arising out of or related to the performance of the services hereunder by Cardinal, regardless of whether such claim is based upon any of the above stated reasons or otherwise. Results relate only to the samples identified above. This report shall not be reproduced except in full with written approval of Cardinal Laboratories.



Celey D. Keene, Lab Director/Quality Manager

Analytical Results For:

Bass Enterprises
522 W. Mermod #709
Carlsbad NM, 88220

Project: JRU-21 SWD #1
Project Number: NONE GIVEN
Project Manager: TONY SAVOIE
Fax To: (505) 887-7473

Reported:
16-May-14 16:20

TCLP Mercury by CVAA - Quality Control**Green Analytical Laboratories**

| Analyte | Result | Reporting Limit | Units | Spike Level | Source Result | %REC | %REC Limits | RPD | RPD Limit | Notes |
|---------|--------|--------------------|-------|----------------|------------------|------|----------------|-----|--------------|-------|
|---------|--------|--------------------|-------|----------------|------------------|------|----------------|-----|--------------|-------|

Batch B405133 - EPA 245.1/7470**LCS (B405133-BS1)**

Prepared & Analyzed: 15-May-14

| | | | | | | |
|---------|--------|--------|------|---------|-----|--------|
| Mercury | 0.0021 | 0.0002 | mg/L | 0.00200 | 106 | 85-115 |
|---------|--------|--------|------|---------|-----|--------|

LCS Dup (B405133-BSD1)

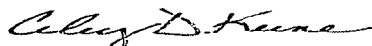
Prepared & Analyzed: 15-May-14

| | | | | | | | | |
|---------|--------|--------|------|---------|-----|--------|------|----|
| Mercury | 0.0021 | 0.0002 | mg/L | 0.00200 | 105 | 85-115 | 1.09 | 20 |
|---------|--------|--------|------|---------|-----|--------|------|----|

Cardinal Laboratories

*=Accredited Analyte

PLEASE NOTE: Liability and Damages. Cardinal's liability and client's exclusive remedy for any claim arising, whether based in contract or tort, shall be limited to the amount paid by client for analyses. All claims, including those for negligence and any other cause whatsoever shall be deemed waived unless made in writing and received by Cardinal within thirty (30) days after completion of the applicable service. In no event shall Cardinal be liable for incidental or consequential damages, including, without limitation, business interruptions, loss of use, or loss of profits incurred by client, its subsidiaries, affiliates or successors arising out of or related to the performance of the services hereunder by Cardinal, regardless of whether such claim is based upon any of the above stated reasons or otherwise. Results relate only to the samples identified above. This report shall not be reproduced except in full with written approval of Cardinal Laboratories.



Celey D. Keene, Lab Director/Quality Manager

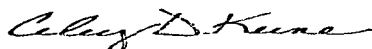
Notes and Definitions

| | |
|------|--|
| Z-01 | > 140 |
| S-04 | The surrogate recovery for this sample is outside of established control limits due to a sample matrix effect. |
| B3 | Target analyte detected in method blank or continuing calibration blank. Reporting limit elevated to account for blank result. |
| ND | Analyte NOT DETECTED at or above the reporting limit |
| RPD | Relative Percent Difference |
| ** | Samples not received at proper temperature of 6°C or below. |
| *** | Insufficient time to reach temperature. |
| - | Chloride by SM4500Cl-B does not require samples be received at or below 6°C Samples reported on an as received basis (wet) unless otherwise noted on report |

Cardinal Laboratories

*=Accredited Analyte

PLEASE NOTE: Liability and Damages. Cardinal's liability and client's exclusive remedy for any claim arising, whether based in contract or tort, shall be limited to the amount paid by client for analyses. All claims, including those for negligence and any other cause whatsoever shall be deemed waived unless made in writing and received by Cardinal within thirty (30) days after completion of the applicable service. In no event shall Cardinal be liable for incidental or consequential damages, including, without limitation, business interruptions, loss of use, or loss of profits incurred by client, its subsidiaries, affiliates or successors arising out of or related to the performance of the services hereunder by Cardinal, regardless of whether such claim is based upon any of the above stated reasons or otherwise. Results relate only to the samples identified above. This report shall not be reproduced except in full with written approval of Cardinal Laboratories.



Celey D. Keene, Lab Director/Quality Manager



Page 11 of 11

[illegible]

† Cardinal cannot accept verbal changes. Please fax written changes to (575) 393-2326