

Bratcher, Mike, EMNRD

From: Bratcher, Mike, EMNRD
Sent: Thursday, October 10, 2013 10:37 AM
To: 'Lara Weinheimer'; Warren, JeanMarie, EMNRD
Cc: 'Hack Conder'; 'Baker, Larry'; 'Jacob Kamplain'
Subject: RE: Apache Red Lake 29-I State #1 Battery (2RP-1875)

Lara,

As discussed in our meeting yesterday, 10/9/13, RECS is approved to commence backfill operations at this site.

Mike Bratcher
NMOCD District 2
811 S. First Street
Artesia, NM 88210
O: 575-748-1283 X108
C: 575-626-0857
F: 575-748-9720

From: Lara Weinheimer [<mailto:lweinheimer@rice-ecs.com>]
Sent: Wednesday, September 25, 2013 2:18 PM
To: Bratcher, Mike, EMNRD; Warren, JeanMarie, EMNRD
Cc: 'Hack Conder'; 'Baker, Larry'; 'Jacob Kamplain'
Subject: Apache Red Lake 29-I State #1 Battery (2RP-1875)

Mike attached is the sampling data for the 6-9 inch scrape and overspray area for the above-referenced site. The bottom samples are from the 6-9 inch scrape on the release. The overspray samples are from the surface and at a depth of 6 inches. Based on the data, Apache would like your permission to backfill the site with clean, imported soil. If you have any questions or concerns, please let us know. Otherwise, we await your approval.

Thanks!

Lara Weinheimer
Rice Environmental Consulting & Safety
Project Scientist
419 West Cain
Hobbs, NM 88240
(575) 441-0431

Bratcher, Mike, EMNRD

From: Baker, Larry <Larry.Baker@apachecorp.com>
Sent: Thursday, October 10, 2013 10:48 AM
To: Bratcher, Mike, EMNRD
Subject: RE: Apache Red Lake 29-I State #1 Battery (2RP-1875)

Thanks

From: Bratcher, Mike, EMNRD [<mailto:mike.bratcher@state.nm.us>]
Sent: Thursday, October 10, 2013 11:37 AM
To: Lara Weinheimer; Warren, JeanMarie, EMNRD
Cc: 'Hack Conder'; Baker, Larry; 'Jacob Kamplain'
Subject: RE: Apache Red Lake 29-I State #1 Battery (2RP-1875)

Lara,

As discussed in our meeting yesterday, 10/9/13, RECS is approved to commence backfill operations at this site.

Mike Bratcher
NMOCD District 2
811 S. First Street
Artesia, NM 88210
O: 575-748-1283 X108
C: 575-626-0857
F: 575-748-9720

From: Lara Weinheimer [<mailto:lweinheimer@rice-ecs.com>]
Sent: Wednesday, September 25, 2013 2:18 PM
To: Bratcher, Mike, EMNRD; Warren, JeanMarie, EMNRD
Cc: 'Hack Conder'; 'Baker, Larry'; 'Jacob Kamplain'
Subject: Apache Red Lake 29-I State #1 Battery (2RP-1875)

Mike attached is the sampling data for the 6-9 inch scrape and overspray area for the above-referenced site. The bottom samples are from the 6-9 inch scrape on the release. The overspray samples are from the surface and at a depth of 6 inches. Based on the data, Apache would like your permission to backfill the site with clean, imported soil. If you have any questions or concerns, please let us know. Otherwise, we await your approval.

Thanks!

Lara Weinheimer
Rice Environmental Consulting & Safety
Project Scientist
419 West Cain
Hobbs, NM 88240
(575) 441-0431

Warren, JeanMarie, EMNRD

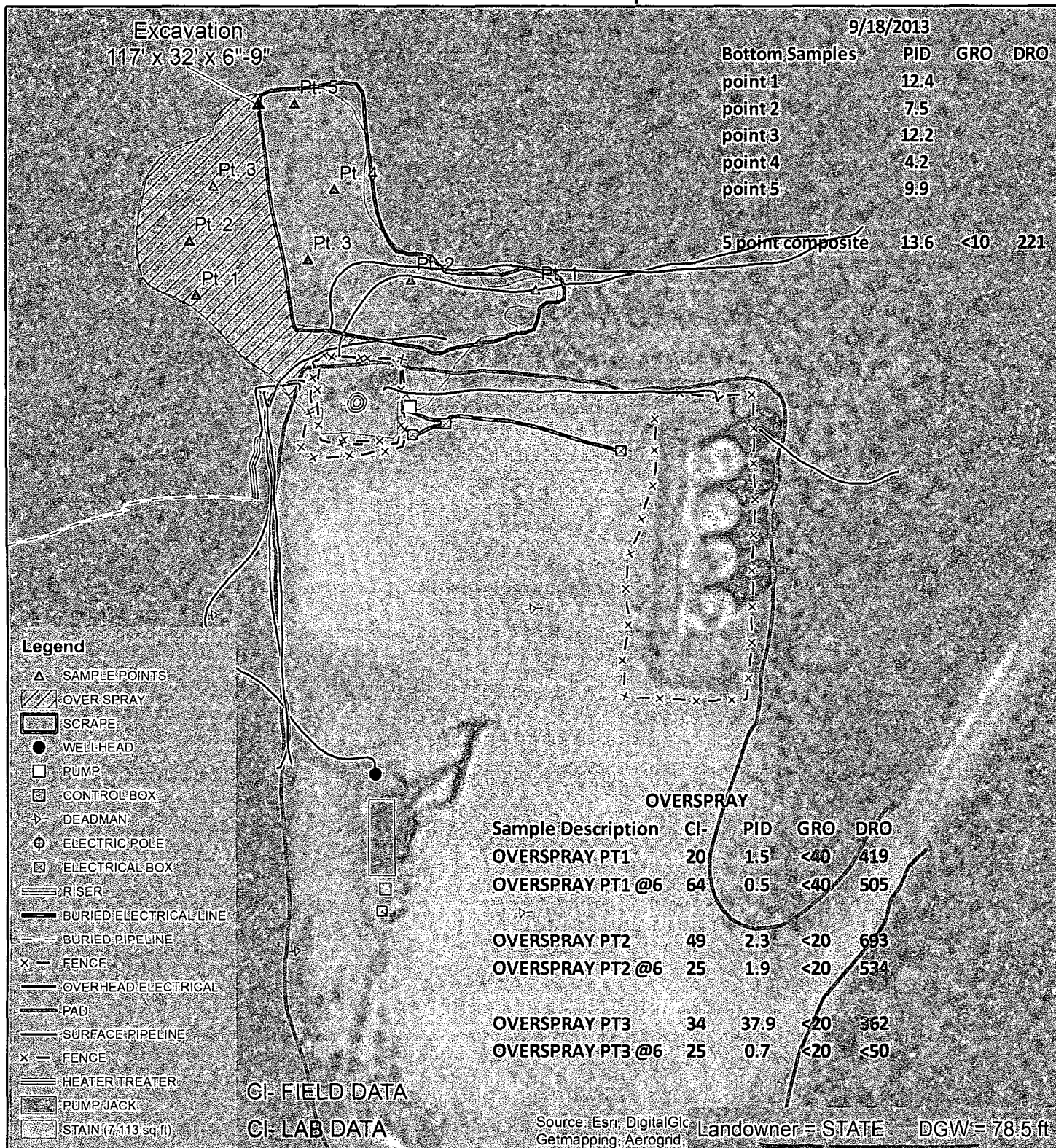
From: Lara Weinheimer <lweinheimer@rice-ecs.com>
Sent: Wednesday, September 25, 2013 2:18 PM
To: Bratcher, Mike, EMNRD; Warren, JeanMarie, EMNRD
Cc: 'Hack Conder'; 'Baker, Larry'; 'Jacob Kamplain'
Subject: Apache Red Lake 29-I State #1 Battery (2RP-1875)
Attachments: APACHE RED LAKE 29 I Excavation Map 9.18.13.jpg

Mike attached is the sampling data for the 6-9 inch scrape and overspray area for the above-referenced site. The bottom samples are from the 6-9 inch scrape on the release. The overspray samples are from the surface and at a depth of 6 inches. Based on the data, Apache would like your permission to backfill the site with clean, imported soil. If you have any questions or concerns, please let us know. Otherwise, we await your approval.

Thanks!

Lara Weinheimer
Rice Environmental Consulting & Safety
Project Scientist
419 West Cain
Hobbs, NM 88240
(575) 441-0431

Excavation Map



APACHE RED LAKE
29 I STATE #1
(2RP-1875)

**LEGALS: UL/I Sec.29
T17S - R28E
EDDY COUNTY, NM**

RECEIVED

SEP 25 2013

NMOCD ARTESIA



Item	Feet
Pineapple	30
Banana	45
Apple	60

GPS date: 9/8/13 KS
Drawing date: 9/25/13
Drafted by: L. Weinheimer