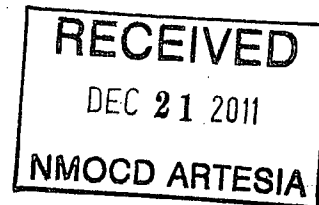


Basin Environmental Service Technologies, LLC

3100 Plains Highway
P. O. Box 301
Lovington, New Mexico 88260
bjarguijo@basinenv.com
Office: (575) 396-2378 Fax: (575) 396-1429



REMEDIATION SUMMARY AND SITE CLOSURE REQUEST

**BOPCO, LP
POKER LAKE UNIT #261
Eddy County, New Mexico
Unit Letter "J" (NWSE), Section 21, Township 24 South, Range 30 East
Latitude 32.201420° North, Longitude 103.883103° West
NMOCD Reference # 2RP-399**

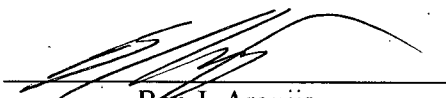
Prepared For:

**BOPCO, LP
522 W. Mermod
Suite 704
Carlsbad, New Mexico 88220**

Prepared By:

**Basin Environmental Service Technologies, LLC
3100 Plains Highway
Lovington, New Mexico 88260**

April 2011



Ben J. Arguijo
Project Manager

TABLE OF CONTENTS

1.0 INTRODUCTION.....	1
2.0 NMOCD SITE CLASSIFICATION.....	1
3.0 SUMMARY OF SOIL REMEDIATION ACTIVITIES.....	2
4.0 QA/QC PROCEDURES.....	3
4.1 Soil Sampling.....	3
4.2 Decontamination of Equipment.....	3
4.3 Laboratory Protocol.....	3
5.0 SITE CLOSURE REQUEST.....	3
6.0 LIMITATIONS.....	3
7.0 DISTRIBUTION.....	4

FIGURES

Figure 1 – Site Location Map

Figure 2 – Site & Sample Location Map

TABLES

Table 1 – Concentrations of Benzene, BTEX, TPH & Chlorides in Soil

APPENDICES

Appendix A – Release Notification and Corrective Action (Form C-141)

Appendix B – Photographs

Appendix C – Laboratory Analytical Reports

INTRODUCTION AND BACKGROUND INFORMATION

Basin Environmental Service Technologies, LLC (Basin), on behalf of BOPCO, LP (BOPCO), has prepared this *Remediation Summary and Site Closure Request* for the release site known as Poker Lake Unit #261 (PLU #261). The legal description of the release site is Unit Letter "J" (NWSE), Section 21, Township 24 South, Range 30 East, in Eddy County, New Mexico. The geographic coordinates of the release site are 32.201420° North latitude and 103.883103° West longitude. The property affected by the release is owned by The United States Department of the Interior, Bureau of Land Management (BLM). A "Site Location Map" is provided as Figure 1.

On March 9, 2010, BOPCO discovered a release had occurred at the PLU #261 Tank Battery. A quarter-inch (1/4") fitting on a water transfer pump failed, resulting in a release of produced water and crude oil. The release was reported to the New Mexico Oil Conservation Division (NMOCD) Artesia District Office on March 10, 2010. The "Release Notification and Corrective Action" (Form C-141) indicated approximately three hundred and ten (310) barrels of produced water and approximately ten (10) barrels of crude oil were released, and approximately three hundred (300) barrels were recovered. The release occurred inside the tank battery, which has Falcon BBL poly-lined containment, and the majority of the release was confined inside the containment area. A heavy mist impacted the areas to the east and northeast of the facility. The heavily misted area was back-dragged, and a Micro-Blaze® solution was applied to the affected area. The "Release Notification and Corrective Action" is provided as Appendix A. General photographs of the release site are provided as Appendix B.

NMOCD SITE CLASSIFICATION

A search of the New Mexico Water Rights Reporting System (NMWRRS) database maintained by the New Mexico Office of the State Engineer (NMOSE) indicated information was unavailable for Section 21, Township 24 South, Range 30 East. A depth to groundwater reference map utilized by the NMOCD indicates groundwater should be encountered at approximately three hundred (300) to three hundred and twenty-five (325) feet below ground surface (bgs). Based on the NMOCD ranking system, zero (0) points will be assigned to the site as a result of this criterion.

A search of the NMWRRS database indicated there are no water wells within 1,000 feet of the release. Based on the NMOCD ranking system, zero (0) points will be assigned to the site as a result of this criterion.

There are no surface water bodies within 1,000 feet of the release. Based on the NMOCD ranking system, zero (0) points will be assigned to the site as a result of this criterion.

NMOCD guidelines indicate the PLU #261 release site has an initial ranking score of zero (0) points. The soil remediation levels for a site with a ranking score of zero (0) points are as follows:

- Benzene – 10 mg/Kg (ppm)
- BTEX – 50 mg/Kg (ppm)
- TPH – 5,000 mg/Kg (ppm)

The New Mexico Administrative Code (NMAC) does not currently specify a remediation level for chloride concentrations in soil. Chloride remediation levels are set by the NMOCD on a site-specific basis.

SUMMARY OF SOIL REMEDIATION ACTIVITIES

On July 20, 2010, Basin collected seventeen (17) soil samples (Background, Sample 1 @ 6", Sample 2 @ 6", Sample 2 @ 2', Sample 2 @ 4', Sample 2 @ 6', Sample 2 @ 7', Sample 2 @ 8', Sample 3 @ 6", Sample 4 @ 6", Sample 5 @ 6", Sample 6 @ 6", Sample 6 @ 2', Sample 6 @ 4', Sample 7 @ 6", Sample 8 @ 6", and Sample 9 @ 6") to delineate the vertical and horizontal impact at the site. The soil samples were submitted to Cardinal Laboratories in Hobbs, New Mexico, for analysis of chloride concentrations using EPA Method 4500 Cl-B. Selected soil samples (Sample 1 @ 6", Sample 2 @ 6", Sample 5 @ 6", Sample 6 @ 6", and Sample 6 @ 2') were also analyzed for total petroleum hydrocarbon (TPH) concentrations using EPA SW-846 8015M. Table 1 summarizes the "Concentrations of Benzene, BTEX, TPH & Chlorides in Soil". A "Site & Sample Location Map" is provided as Figure 2. Laboratory analytical reports are provided as Appendix C.

Laboratory analytical results indicated chloride concentrations ranged from less than the appropriate laboratory method detection limit (MDL) for soil samples Background, Sample 3 @ 6", Sample 5 @ 6", Sample 7 @ 6", and Sample 8 @ 6" to 9,000 mg/Kg for soil sample Sample 1 @ 6". TPH concentrations ranged from less than the appropriate laboratory MDL for soil samples Sample 5 @ 6", Sample 6 @ 6", and Sample 6 @ 2' to 738 mg/Kg for soil sample Sample 2 @ 6". TPH concentrations were less than the NMOCD regulatory standard for each of the submitted soil samples.

On March 11, 2011, excavation of impacted soil commenced at the site. From March 11 through March 14, 2011, approximately one hundred and fifty-four (154) cubic yards (cy) of impacted soil was excavated, blended with non-impacted soil, and stockpiled on-site, pending final disposition.

On March 14, 2011, six (6) soil samples (North Wall, South Wall, East Wall, West Wall, Floor, and Stock Pile) were collected from the floor and sidewalls of the excavation and submitted to Cardinal Laboratories for analysis of TPH and chloride concentrations. Selected soil samples (East Wall and Stock Pile) were also analyzed for concentrations of benzene, toluene, ethylbenzene, and xylenes (BTEX) using EPA Method SW-846 8021b.

Laboratory analytical results indicated benzene and BTEX concentrations were less than the appropriate laboratory MDL for all soil samples analyzed. TPH concentrations ranged from less than the laboratory MDL for soil samples North Wall, South Wall, East Wall, West Wall, and Floor to 11.2 mg/Kg for soil sample Stock Pile. Chloride concentrations ranged from less than the laboratory MDL for soil samples North Wall, South Wall, and Floor to 112 mg/Kg for soil sample Stock Pile.

Based on laboratory analytical results, on March 15 and 16, 2011, the excavation was backfilled in eighteen (18)-inch lifts, compacted, and contoured to fit the surrounding topography. Prior to backfilling, final dimensions of the excavation were approximately sixty-five (65) feet in length, approximately thirty-two (32) feet in width, and approximately two (2) feet in depth.

4.0 QA/QC PROCEDURES

4.1 Soil Sampling

Soil samples were delivered to Cardinal Laboratories, Inc., of Hobbs, New Mexico, for BTEX, TPH, and/or chloride analyses using the methods described below:

- BTEX concentrations in accordance with EPA Method SW-846 8021b
- TPH concentrations in accordance with modified EPA Method SW-846 8015M
- Chloride concentrations in accordance with EPA Method SM 4500 Cl-B

4.2 Decontamination of Equipment

Cleaning of the sampling equipment was the responsibility of the environmental technician. Prior to use, and between each sample, the sampling equipment was cleaned with Liqui-Nox® detergent and rinsed with distilled water.

4.3 Laboratory Protocol

The laboratory was responsible for proper QA/QC procedures after signing the chain-of-custody form(s). These procedures were either transmitted with the laboratory reports or are on file at the laboratory.

5.0 SITE CLOSURE REQUEST

Soil samples collected from the floors and sidewalls of the PLU #261 excavation were analyzed by an NMOCD-approved laboratory, and concentrations of Benzene, BTEX, TPH, and chloride were below the remediation action levels established for the site. Based on these analytical results, Basin recommends BOPCO provide the NMOCD Artesia District Office and the BLM a copy of this *Remediation Summary and Site Closure Request* and request the NMOCD grant site closure to the PLU #261 release site.

6.0 LIMITATIONS

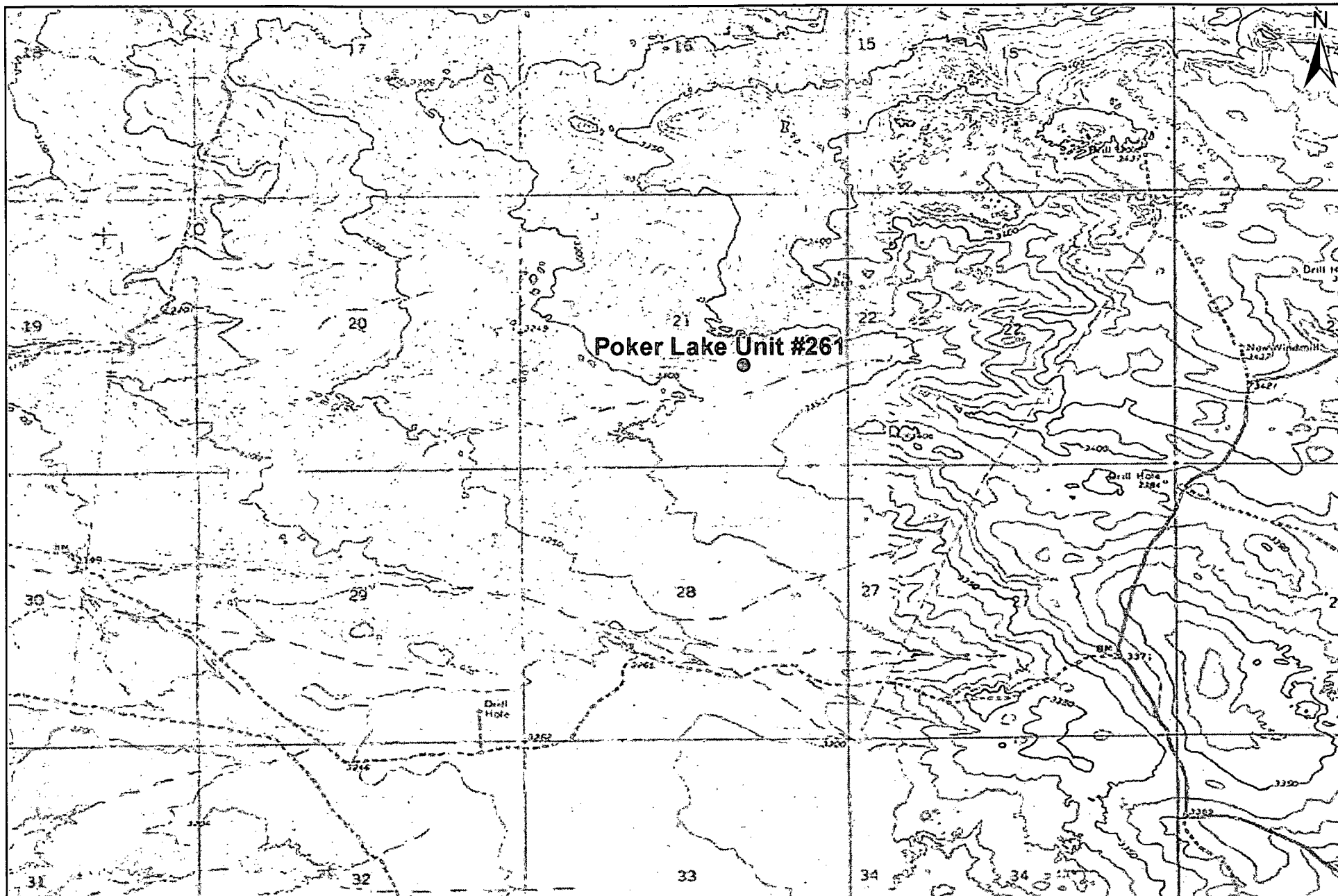
Basin Environmental Service Technologies, LLC, has prepared this *Remediation Summary and Site Closure Request* to the best of its ability. No other warranty, expressed or implied, is made or intended. Basin has examined and relied upon documents referenced in the report and on oral statements made by certain individuals. Basin has not conducted an independent examination of the facts contained in referenced materials and statements. Basin has presumed the genuineness of these documents and statements and that the information provided therein is true and accurate. Basin has prepared this report in a professional manner, using the degree of skill and care exercised by similar environmental consultants. Basin notes that the facts and conditions referenced in this report may change over time, and the conclusions and recommendations set forth herein are applicable only to the facts and conditions as described at the time of this report.

This report has been prepared for the benefit of BOPCO, LP. The information contained in this report, including all exhibits and attachments, may not be used by any other party without the express consent of Basin Environmental Service Technologies, LLC, and/or BOPCO, LP.

DISTRIBUTION:

- Copy 1: Mike Bratcher
New Mexico Energy, Minerals and Natural Resources Department
Oil Conservation Division (District 2)
1301 E. Grand Avenue
Artesia, New Mexico 88210
- Copy 2: James Amos
Bureau of Land Management
602 E. Greene Street
Carlsbad, New Mexico 88220
- Copy 3: Tony Savoie
BOPCO, LP
522 W. Mermod, Ste. 704
Carlsbad, New Mexico 88220
- Copy 4: Basin Environmental Service Technologies, LLC
P.O. Box 301
Lovington, New Mexico 88260

Figures

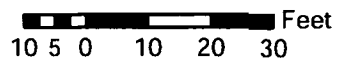
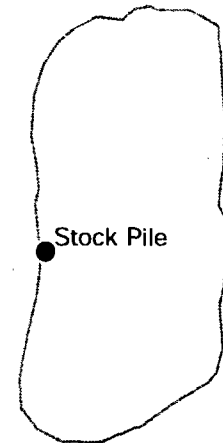
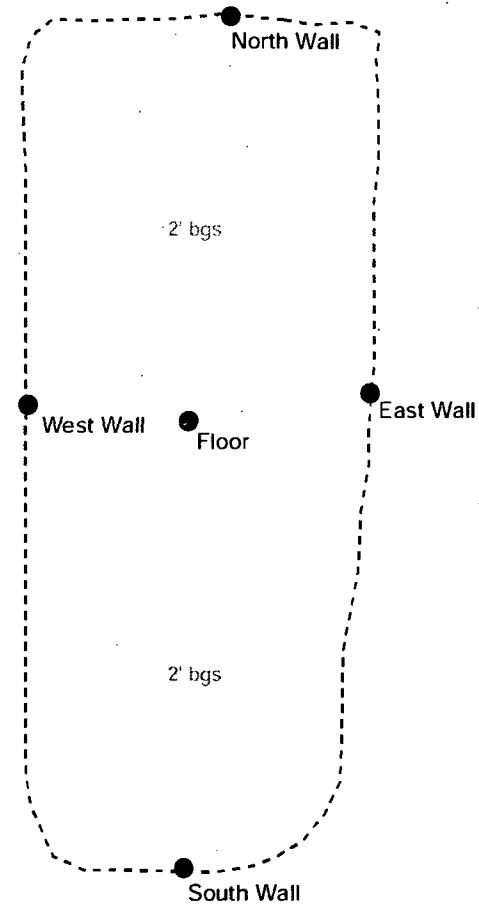
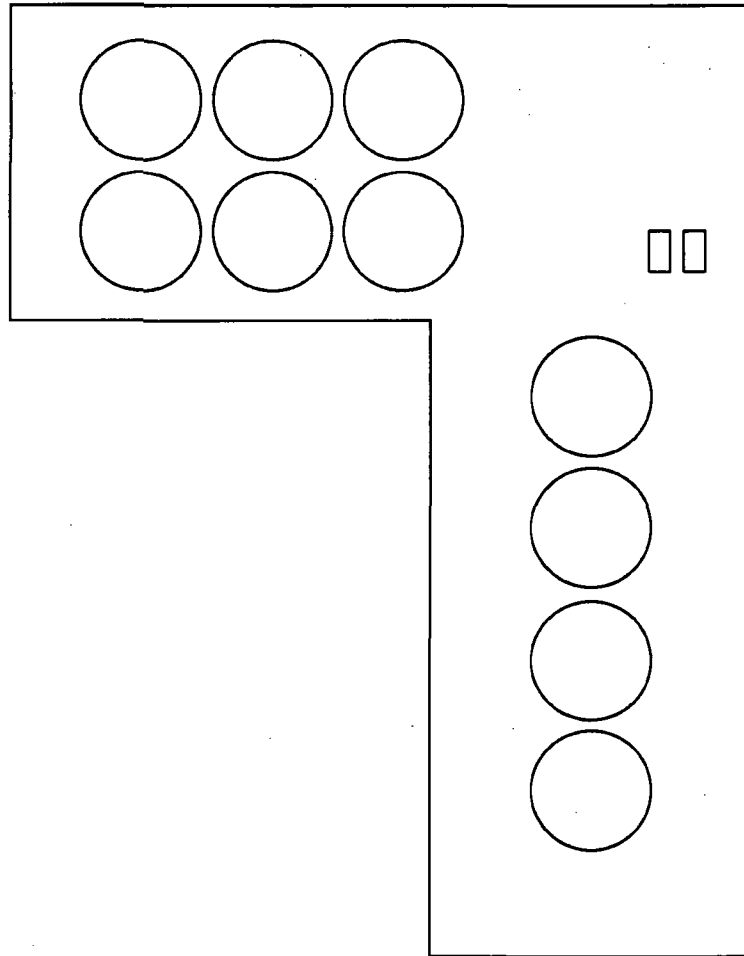


1,250 625 0 1,250 2,500
 Distance in Feet

Figure 1
 Site Location Map
 BOPCO, LP
 Poker Lake Unit #261
 Eddy County, New Mexico
 2RP-399

Basin Environmental Service Technologies, LLC

Drawn By: BJA	Checked By: BRB
April 5, 2011	Scale: 1" = 2,500'



Legend:

- - - - - Excavation Extent
- Caliche Pad
- Stockpile
- Storage Tank
- Sample Location

Figure 2
Site & Sample Location Map
BOPCO, LP
Poker Lake Unit #261
Eddy County, New Mexico
2RP-399

Basin Environmental Service Technologies, LLC

Drawn By: BJA

Checked By: BRB

April 5, 2011

Tables

TABLE 1

CONCENTRATIONS OF BENZENE, BTEX, TPH & CHLORIDES IN SOIL

BOPCO, LP
POKER LAKE UNIT #261
EDDY COUNTY, NEW MEXICO
NMOCD REFERENCE #: 2RP-399

SAMPLE LOCATION	SAMPLE DEPTH (BGS)	SAMPLE DATE	SOIL STATUS	METHOD: EPA SW-846 8021B					METHOD: SW-846 8015M			TOTAL TPH C ₆ -C ₃₅ (mg/Kg)	SM 4500 Cl-B CHLORIDE (mg/Kg)
				BENZENE (mg/Kg)	TOLUENE (mg/Kg)	ETHYL- BENZENE (mg/Kg)	TOTAL XYLENES (mg/Kg)	TOTAL BTEX (mg/Kg)	GRO C ₆ -C ₁₂ (mg/Kg)	DRO C ₁₂ -C ₂₈ (mg/Kg)	ORO C ₂₈ -C ₃₅ (mg/Kg)		
Background	Surface	7/20/2010	In-Situ	-	-	-	-	-	-	-	-	-	<16.0
Sample 1 @ 6"	6"	7/20/2010	In-Situ	-	-	-	-	-	<10.0	32.5	<10.0	32.5	9,000
Sample 2 @ 6"	6"	7/20/2010	In-Situ	-	-	-	-	-	<10.0	738	<10.0	738	1,600
Sample 2 @ 2'	2'	7/20/2010	In-Situ	-	-	-	-	-	-	-	-	-	992
Sample 2 @ 4'	4'	7/20/2010	In-Situ	-	-	-	-	-	-	-	-	-	64.0
Sample 2 @ 6'	6'	7/20/2010	In-Situ	-	-	-	-	-	-	-	-	-	224
Sample 2 @ 7'	7'	7/20/2010	In-Situ	-	-	-	-	-	-	-	-	-	384
Sample 2 @ 8'	8'	7/20/2010	In-Situ	-	-	-	-	-	-	-	-	-	272
Sample 3 @ 6"	6"	7/20/2010	In-Situ	-	-	-	-	-	-	-	-	-	<16.0
Sample 4 @ 6"	6"	7/20/2010	In-Situ	-	-	-	-	-	-	-	-	-	64.0
Sample 5 @ 6"	6"	7/20/2010	In-Situ	-	-	-	-	-	<10.0	<10.0	<10.0	<10.0	<16.0
Sample 6 @ 6"	6"	7/20/2010	In-Situ	-	-	-	-	-	<10.0	<10.0	<10.0	<10.0	224
Sample 6 @ 2'	2'	7/20/2010	In-Situ	-	-	-	-	-	<10.0	<10.0	<10.0	<10.0	1,880
Sample 6 @ 4'	4'	7/20/2010	In-Situ	-	-	-	-	-	-	-	-	-	2,960
Sample 7 @ 6"	6"	7/20/2010	In-Situ	-	-	-	-	-	-	-	-	-	<16.0
Sample 8 @ 6"	6"	7/20/2010	In-Situ	-	-	-	-	-	-	-	-	-	<16.0
Sample 9 @ 6"	6"	7/20/2010	In-Situ	-	-	-	-	-	-	-	-	-	80.0
North Wall	2'	3/14/2011	In-situ	-	-	-	-	-	<10.0	<10.0	<10.0	<10.0	<16.0
South Wall	2'	3/14/2011	In-situ	-	-	-	-	-	<10.0	<10.0	<10.0	<10.0	<16.0
East Wall	2'	3/14/2011	In-situ	<0.050	<0.050	<0.050	<0.150	<0.150	<10.0	<10.0	<10.0	<10.0	16.0
West Wall	2'	3/14/2011	In-situ	-	-	-	-	-	<10.0	<10.0	<10.0	<10.0	16.0
Floor	2'	3/14/2011	In-situ	-	-	-	-	-	<10.0	<10.0	<10.0	<10.0	<16.0
Stock Pile	N/A	3/14/2011	N/A	<0.050	<0.050	<0.050	<0.150	<0.150	<10.0	11.2	<10.0	11.2	112
NMOCD Criteria				10				50				5,000	1,000

- = Not analyzed.

Appendices

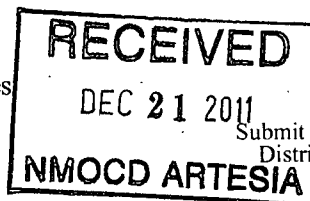
Appendix A

Release Notification &

Corrective Action (Form C-141)

District I
1625 N. French Dr., Hobbs, NM 88240
District II
1301 W. Grand Avenue, Artesia, NM 88210
District III
1000 Rio Brazos Road, Aztec, NM 87410
District IV
1220 S. St. Francis Dr., Santa Fe, NM 87505

State of New Mexico
Energy Minerals and Natural Resources
Oil Conservation Division
1220 South St. Francis Dr.
Santa Fe, NM 87505



Form C-141
Revised October 10, 2003
Submit 2 Copies to appropriate
District Office in accordance
with Rule 116 on back
side of form

Release Notification and Corrective Action

OPERATOR

Initial Report

X Final Report

Name of Company	BOPCO, LP	Contact	Tony Savoie
Address	522 W. Mermod, Suite 704, Carlsbad, NM 88220	Telephone No.	(432)556-8730
Facility Name	Poker Lake Unit #261	Facility Type	E&P
Surface Owner	Federal	Mineral Owner	Federal
		Lease No.	30-015-39877

LOCATION OF RELEASE

Unit Letter	Section	Township	Range	Feet from the	North/South Line	Feet from the	East/West Line	County
J	21	24S	30E	1980	South	1880	East	Eddy

Latitude 32.201420° North

Longitude 103.883103° West

NATURE OF RELEASE

Type of Release	Produced water and crude oil	Volume of Release	310 bbls of produced water and <10 bbls of crude oil	Volume Recovered	300 bbls
Source of Release	Pipe fitting failure on a water transfer pump	Date and Hour of Occurrence	3/9/10, approximately 14:00	Date and Hour of Discovery	3/9/2010, 16:00
Was Immediate Notice Given?	X Yes No Not Required	If YES, To Whom?	Sherry Bonham		
By Whom?	Tony Savoie	Date and Hour	3/10/10, 0700 Left mssg. Returned call later.		
Was a Watercourse Reached?	<input type="checkbox"/> Yes X No	If YES, Volume Impacting the Watercourse.			

If a Watercourse was Impacted, Describe Fully.*

Describe Cause of Problem and Remedial Action Taken:

A 1/4" fitting on a water transfer pump broke off, causing mostly produced water to be released.

Describe Area Affected and Cleanup Action Taken.

The facility has a Falcon BBL poly-lined containment, which contained most of the product released. A vacuum truck was dispatched to the location the same day, and all of the free-standing fluid was removed. An area measuring approximately 2,000 sq ft east of the site was heavily misted by the release, and this area was backdragged. Another 30,000 sq ft of pasture land was affected by the mist of the produced water release. This area was washed down with a nutrient and microblaze solution the following day. Following initial response activities, the release was remediated as per NMOCD approval. Please reference the attached *Remediation Summary and Site Closure Request* for remediation details.

I hereby certify that the information given above is true and complete to the best of my knowledge and understand that pursuant to NMOCD rules and regulations all operators are required to report and/or file certain release notifications and perform corrective actions for releases, which may endanger public health or the environment. The acceptance of a C-141 report by the NMOCD marked as "Final Report" does not relieve the operator of liability should their operations have failed to adequately investigate and remediate contamination that pose a threat to ground water, surface water, human health or the environment. In addition, NMOCD acceptance of a C-141 report does not relieve the operator of responsibility for compliance with any other federal, state, or local laws and/or regulations.

OIL CONSERVATION DIVISION

Signature:

Printed Name: Tony Savoie

Approved by District Supervisor:

Title: Waste Mgmt. & Remediation Specialist

Approval Date:

Expiration Date:

E-mail Address: TASavoie@BassPet.com

Conditions of Approval:

Date: 12/6/2011

Phone: (432)556-8730

District I
1625 N. French Dr., Hobbs, NM 88240
District II
1301 W. Grand Avenue, Artesia, NM 88210
District III
1000 Rio Brazos Road, Aztec, NM 87410
District IV
1220 S. St. Francis Dr., Santa Fe, NM 87505

State of New Mexico
Energy Minerals and Natural Resources
Oil Conservation Division
1220 South St. Francis Dr.
Santa Fe, NM 87505

RECEIVED

MAR 16 2010

NMOCD ARTESIA

Form C-141
Revised October 10, 2003

Submit 2 Copies to appropriate
District Office in accordance
with Rule 116 on back
side of form

Release Notification and Corrective Action

OPERATOR

☒ Initial Report ☐ Final Report

Name of Company BOPCO, L.P. *260737*
Address 522 W. Mermad, Suite 704 Carlsbad, N.M. 88220
Facility Name Poker Lake Unit #261
Contact Tony Savoie
Telephone No. 432-556-8730
Facility Type E&P

Surface Owner Federal Mineral Owner Federal Lease No.

3001534877

LOCATION OF RELEASE

Unit Letter	Section	Township	Range	Feet from the	North/South Line	Feet from the	East/West Line	County
J	21	24S	30E	1980		1980		Eddy

Latitude N 32.201420 Longitude W 103.883103

NATURE OF RELEASE

Type of Release: Produced water and crude oil	Volume of Release: 310 Bbls of Produced water and Less than 10 Bbls of crude oil	Volume Recovered: 300 Bbls
Source of Release: Pipe fitting failure on a water transfer pump	Date and Hour of Occurrence: 3/9/10 Approximately 2:00 p.m.	Date and Hour of Discovery: 3/9/10 4:00 p.m.
Was Immediate Notice Given? <input checked="" type="checkbox"/> Yes <input type="checkbox"/> No <input type="checkbox"/> Not Required	If YES, To Whom? Sherry Bonham	
By Whom? Tony Savoie	Date and Hour 3/10/10 7:00 a.m. Left Msg. Returned call later	
Was a Watercourse Reached? <input type="checkbox"/> Yes <input checked="" type="checkbox"/> No	If YES, Volume Impacting the Watercourse.	

If a Watercourse was Impacted, Describe Fully.*

Describe Cause of Problem and Remedial Action Taken.* A 1/2" fitting on a water transfer pump broke off causing mostly produced water to be released. The pump was shut down and the damaged fitting was repaired.

Describe Area Affected and Cleanup Action Taken.* The facility has a Falcon RBL poly lined containment which contained most of the product released. A vacuum truck was dispatched to the location the same day and all of the free standing fluid was removed. An area measuring approximately 2,000 sq. ft. east of the site was heavily misted by the release. This area was backdraged. Another 30,000 Sq. ft. of pasture land was affected by the mist of the produced water release. This area was washed down with a nutrient and microblaze solution the following day.

The Site remediation for the produced water and crude oil spill will follow the NMOCD guidelines for leaks and spills.

I hereby certify that the information given above is true and complete to the best of my knowledge and understand that pursuant to NMOCD rules and regulations all operators are required to report and/or file certain release notifications and perform corrective actions for releases which may endanger public health or the environment. The acceptance of a C-141 report by the NMOCD marked as "Final Report" does not relieve the operator of liability should their operations have failed to adequately investigate and remediate contamination that pose a threat to ground water, surface water, human health or the environment. In addition, NMOCD acceptance of a C-141 report does not relieve the operator of responsibility for compliance with any other federal, state, or local laws and/or regulations.

OIL CONSERVATION DIVISION

Signature: *Tony Savoie*

Approved by District Supervisor: *[Signature]*

Remediation Action to be taken after Final C-141 submitted with notification and/or documentation on or before the Expiration Date.

Printed Name: Tony Savoie

Title: Waste Mgmt & Remediation Specialist

Approval Date: 4-8-10

Expiration Date: 6-8-10

E-mail Address: TAsavoie@BassPet.com

Conditions of Approval:

Attached ☐

Date: 3/15/10

Phone: 432-556-8730

Notify OCD 48 hours prior to obtaining samples where analyses are to be presented to OCD

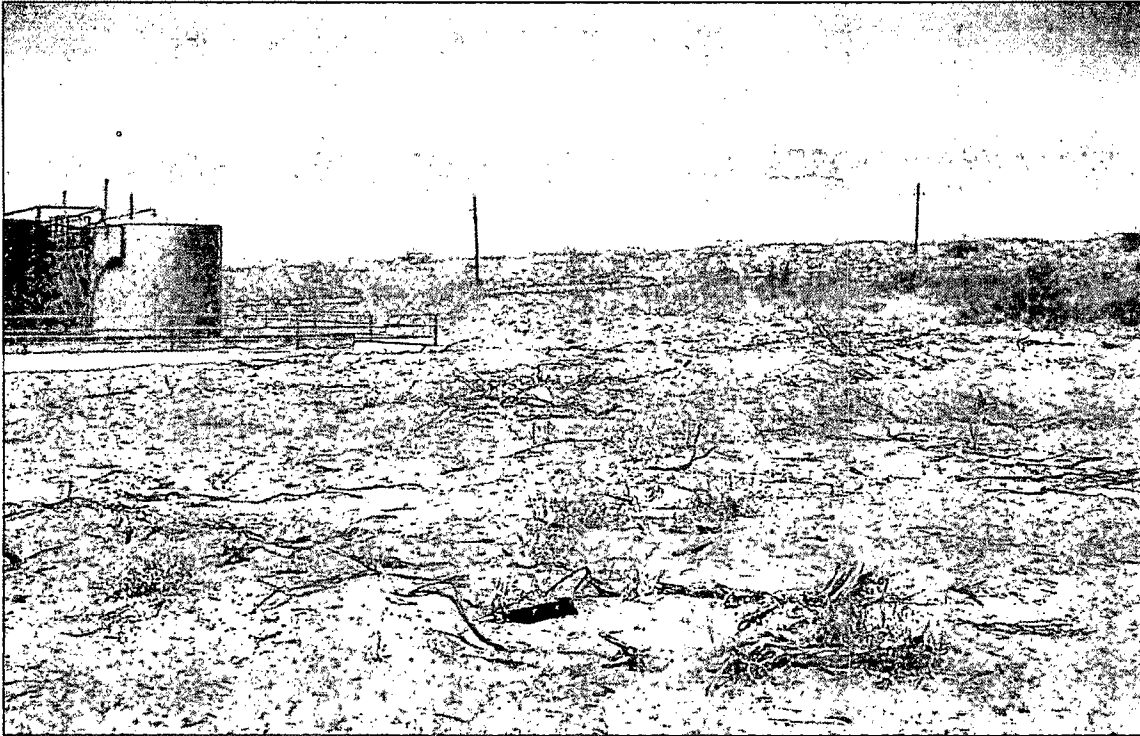
260-399

Attach Additional Sheets If Necessary

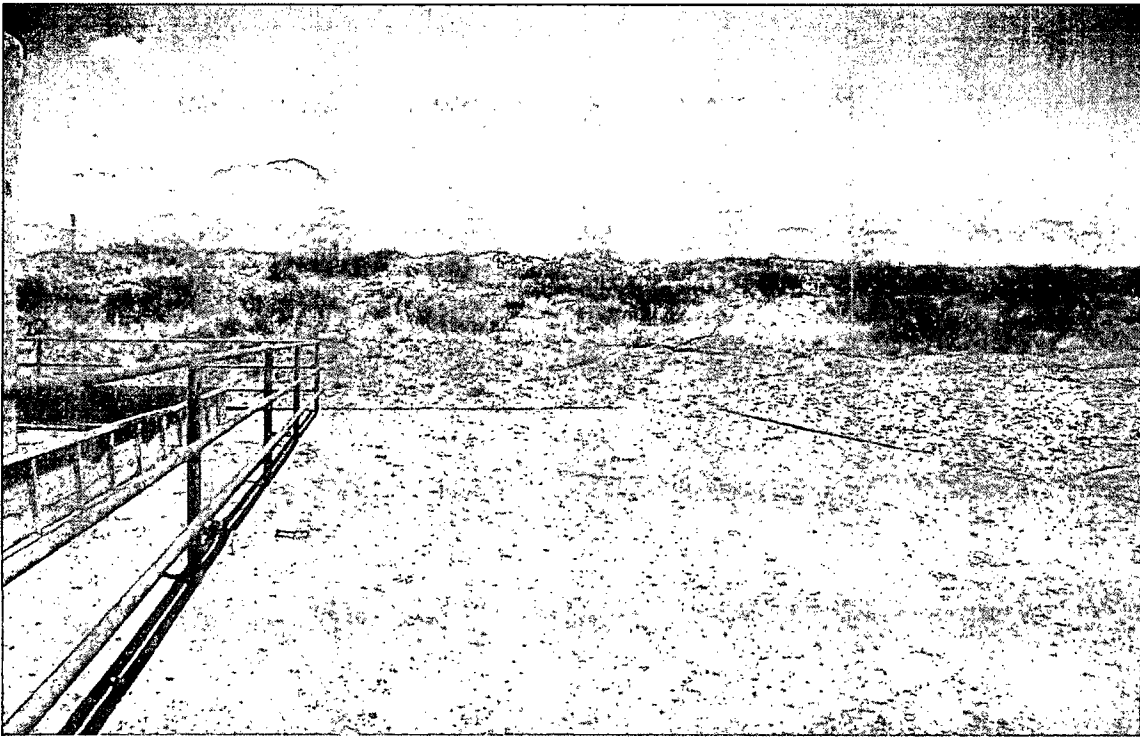
260-399

Appendix B

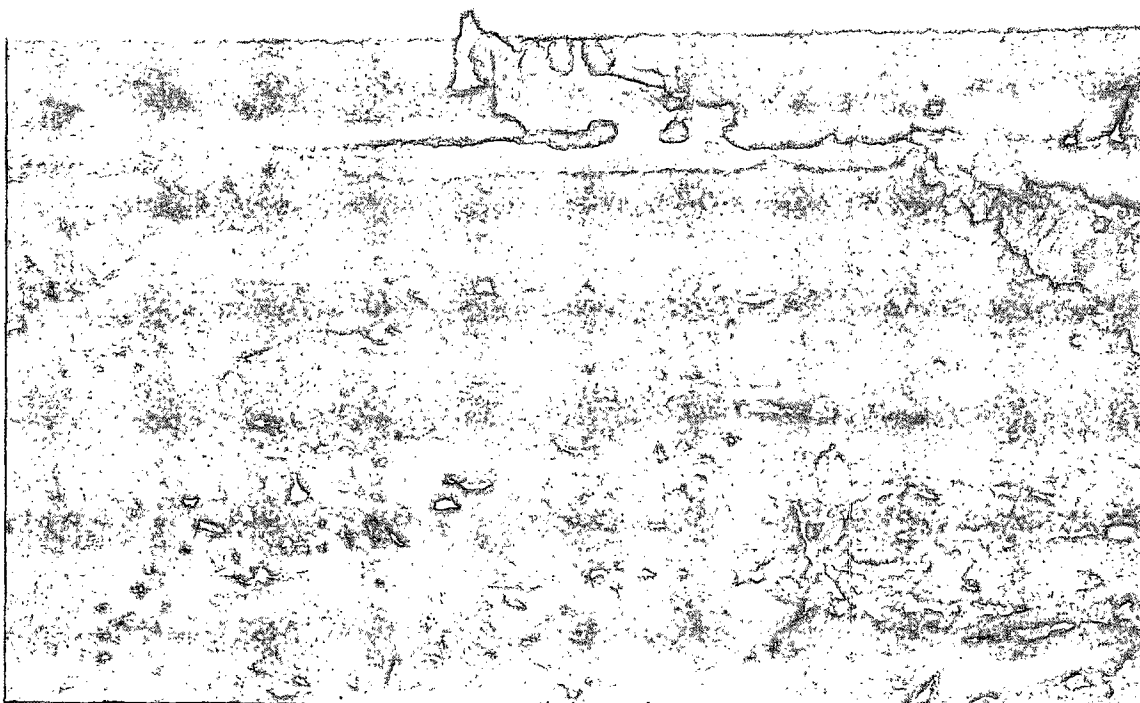
Photographs



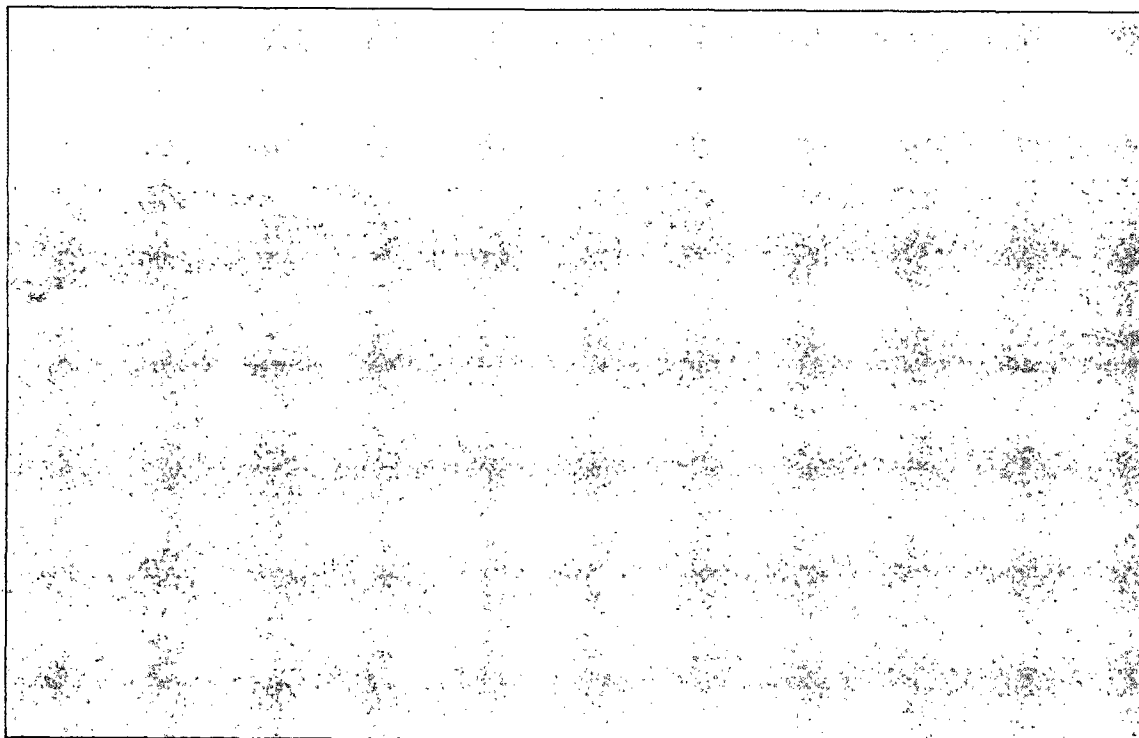
Poker Lake Unit #261 Release (looking Northwest)



Poker Lake Unit #261 Release (looking North)



Poker Lake Unit #261 - Excavation (sample points flagged)



Poker Lake Unit #261 (looking North, following backfill)

Appendix C

Laboratory Analytical Reports



ARDINAL LABORATORIES

PHONE (575) 393-2326 • 101 E. MARLAND • HOBBS, NM 88240

August 2, 2010

Camille Bryant
Basin Environmental Consulting, LLC.
P.O. Box 381
Lovington, NM 88260

Re: PLU 261 (BOPCO)

Enclosed are the results of analyses for sample number H20425, received by the laboratory on 07/27/10 at 10:20 am.

Cardinal Laboratories is accredited through Texas NELAP for:

Method SW-846 8021	Benzene, Toluene, Ethyl Benzene, and Total Xylenes
Method SW-846 8260	Benzene, Toluene, Ethyl Benzene, and Total Xylenes
Method TX 1005	Total Petroleum Hydrocarbons

Certificate number T104704398-08-TX. Accreditation applies to solid and chemical materials and non-potable water matrices.

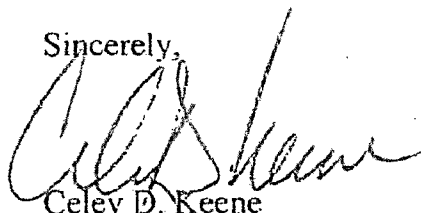
Cardinal Laboratories is accredited through the State of Colorado Department of Public Health and Environment for:

Method EPA 552.2	Haloacetic Acids (HAA-5)
Method EPA 524.2	Total Trihalomethanes (TTHM)
Method EPA 524.2	Regulated VOCs (V2, V3)

Accreditation applies to public drinking water matrices.

Total Number of Pages of Report: 5 (includes Chain of Custody)

Sincerely,



Celey D. Keene
Laboratory Director



PHONE (575) 393-2326 • 101 E. MARLAND • HOBBS, NM 88240

ANALYTICAL RESULTS FOR
BASIN ENVIRONMENTAL CONSULTING, LLC
ATTN: CAMILLE BRYANT
P.O. BOX 381
LOVINGTON, NM 88260
FAX TO: (575) 396-1429

Receiving Date: 07/27/10
Reporting Date: 07/29/10
Project Owner: BOPCO
Project Name: PLU 261
Project Location: EDDY CO., NM

Analysis Date: 07/29/10
Sampling Date: 07/20/10
Sample Type: SOIL
Sample Condition: COOL & INTACT @ 6°C
Sample Received By: JH
Analyzed By: HM

LAB NO.	SAMPLE ID	Cl ⁻ (mg/kg)
H20425-1	BACKGROUND	< 16
H20425-2	SAMPLE 1 @ 6"	9,000
H20425-3	SAMPLE 2 @ 6"	1,600
H20425-4	SAMPLE 2 @ 2'	992
H20425-5	SAMPLE 3 @ 6"	< 16
H20425-6	SAMPLE 4 @ 6"	64
H20425-7	SAMPLE 5 @ 6"	< 16
H20425-8	SAMPLE 6 @ 6"	224
H20425-9	SAMPLE 6 @ 2'	1,880
H20425-10	SAMPLE 6 @ 4'	2,960
H20425-11	SAMPLE 7 @ 6"	< 16
H20425-12	SAMPLE 8 @ 6"	< 16
H20425-13	SAMPLE 9 @ 6"	80
Quality Control		520
True Value QC		500
% Recovery		104
Relative Percent Difference		< 0.1

METHOD: Standard Methods

4500-Cl/B

Note: Analyses performed on 1:4 w:v aqueous extracts.

Not accredited for Chloride.

Chemist

Date

H20425 Basin Environmental

PLEASE NOTE: Liability and Damages. Cardinal's liability and client's exclusive remedy for any claim arising, whether based in contract or tort, shall be limited to the amount paid by client for analyses. All claims, including those for negligence and any other cause whatsoever shall be deemed waived unless made in writing and received by Cardinal within thirty (30) days after completion of the applicable service. In no event shall Cardinal be liable for incidental or consequential damages, including, without limitation, business interruptions, loss of use, or loss of profits incurred by client, its subsidiaries, affiliates or successors arising out of or related to the performance of services hereunder by Cardinal, regardless of whether such claim is based upon any of the above-stated reasons or otherwise. Results relate only to the samples identified above. This report shall not be reproduced except in full with written approval of Cardinal Laboratories.

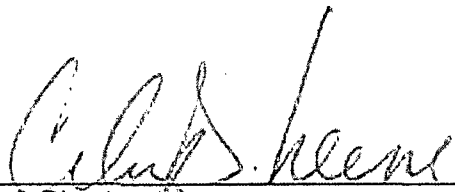
ANALYTICAL RESULTS FOR
 BASIN ENVIRONMENTAL CONSULTING
 ATTN: CAMILLE BRYANT
 P.O. BOX 381
 LOVINGTON, NM 88260
 FAX TO: (575) 396-1429


Receiving Date: 07/27/10
 Reporting Date: 08/02/10
 Project Owner: BOPCO
 Project Name: PLU 261
 Project Location: EDDY COUNTY, NM

Sampling Date: 07/20/10
 Sample Type: SOIL
 Sample Condition: COOL & INTACT @ 6°C
 Sample Received By: JH
 Analyzed By: AB

LAB NUMBER	SAMPLE ID	GRO (C ₆ -C ₁₀) (mg/kg)	DRO (>C ₁₀ -C ₂₈) (mg/kg)	DRO ext. (>C ₂₈ -C ₃₅) (mg/kg)
		07/30/10	07/30/10	07/30/10
H20425-2	SAMPLE 1 @ 6"	<10.0	32.5	<10.0
H20425-3	SAMPLE 2 @ 6"	<10.0	738	<10.0
H20425-7	SAMPLE 5 @ 6"	<10.0	<10.0	<10.0
H20425-8	SAMPLE 6 @ 6"	<10.0	<10.0	<10.0
H20425-9	SAMPLE 6 @ 2'	<10.0	<10.0	<10.0
Quality Control		459	447	-
True Value QC		500	500	-
% Recovery		91.8	89.4	-
Relative Percent Difference		0.6	1.1	-

METHODS: TPH GRO & DRO: EPA SW-846 8015 M extended
 Reported on wet weight. Not accredited for GRO/DRO/DRO Ext.


 Lab Director


 Date

H20425 TPHEXT BASIN

CHAIN-OF-CUSTODY AND ANALYSIS REQUEST

CARDINAL LABORATORIES

101 East Marland, Hobbs, NM 88240

(505) 393-2326 FAX (505) 393-2476

1672

Company Name: <u>DASIN Consulting</u>				BILL TO				ANALYSIS REQUEST																
Project Manager: <u>Camille Bryant</u>				P.O. #:				<div style="writing-mode: vertical-rl; transform: rotate(180deg);"> Chlorides 4500 TPH 8015M extended </div>																
Address: <u>2800 Plains Blvd</u>				Company: <u>BOPCO</u>																				
City: <u>Lorington</u> State: <u>DM</u> Zip: <u>88260</u>				Attn: <u>TONY SAVAR</u>																				
Phone #: <u>575-605-7210</u> Fax #: <u>575-396-1429</u>				Address:																				
Project #: _____ Project Owner: <u>BOPCO</u>				City:																				
Project Name: <u>PLU 261</u>				State: _____ Zip: _____																				
Project Location: <u>Eddy Co, NM</u>				Phone #:																				
Sampler Name: <u>[Signature]</u>				Fax #:																				
FOR LAB USE ONLY				MATRIX		PRESERV		SAMPLING																
Lab I.D.	Sample I.D.	(G)RAB OR (C)OMP	# CONTAINERS	GROUNDWATER	WASTEWATER	SOIL	OIL	SLUDGE	OTHER	ACID/BASE	ICE/COOL	OTHER	DATE	TIME										
H20425-1	Background	G				X				X			7/20	1300	X									
2	Sample 1 c 6"													1310	X	X								
3	Sample 2 c 6"													1320	X	X								
4	Sample 2 c 2'													1330	X									
5	Sample 3 c 6"													1345	X									
6	Sample 4 c 6"													1400	X									
7	Sample 5 c 6"													1415	X	X								
8	Sample 6 c 6"													1440	X	X								
9	Sample 6 c 2'													1455	X	X								
10	Sample 6 c 4'													1510	X									

PLEASE NOTE: Liability and Damages. Cardinal's liability and client's exclusive remedy for any claim arising under or related to contract or tort shall be limited to the amount paid by the client for the analysis. All claims including those for negligence and any other cause whatsoever shall be deemed waived unless made in writing and received by Cardinal within 30 days after completion of the applicable services. In no event shall Cardinal be liable for incidental or consequential damages, including without limitation, business interruptions, loss of use, or loss of profits incurred by client, its subsidiaries, affiliates or successors arising out of or related to the performance of services hereunder by Cardinal, regardless of whether such claim is based upon any of the above stated contract or otherwise.

Relinquished By: <u>[Signature]</u>	Date: <u>7-27-06</u>	Received By: <u>[Signature]</u>	Phone Result: <input type="checkbox"/> Yes <input type="checkbox"/> No	Add'l Phone #:
Time: <u>10:20</u>			Fax Result: <input type="checkbox"/> Yes <input type="checkbox"/> No	Add'l Fax #:
Relinquished By: <u>[Signature]</u>	Date: _____	Received By: <u>Jodi Benson</u>	REMARKS:	
Time: _____				
Delivered By: (Circle One)	Sample Condition	CHECKED BY:		
Sampler - UPS - Bus - Other:	Cool Intact	(Initials)		
	<input checked="" type="checkbox"/> Yes <input type="checkbox"/> No	<u>[Signature]</u>		

† Cardinal cannot accept verbal changes. Please fax written changes to 505-393-2476

26

CHAIN-OF-CUSTODY AND ANALYSIS REQUEST

CARDINAL LABORATORIES

101 East Marland, Hobbs, NM 88240

(505) 393-2326 FAX (505) 393-2476

Company Name: <u>BASIN CONSULTING</u>				BILL TO				ANALYSIS REQUEST																		
Project Manager: <u>Camille Bryant</u>				P.O. #:				<div style="display: flex; align-items: center;"> <div style="writing-mode: vertical-rl; transform: rotate(180deg);">Chloride 4500</div> <div style="writing-mode: vertical-rl; transform: rotate(180deg);">TPH 8015 m extended</div> </div>																		
Address: <u>2800 Plains Blvd</u>				Company: <u>BOPCO</u>																						
City: <u>Lovington</u> State: <u>NM</u> Zip: <u>88260</u>				Attn: <u>Tony Sarcie</u>																						
Phone #: <u>575-605-7411</u> Fax #: <u>575-396-1429</u>				Address: <u>J</u>																						
Project #: _____ Project Owner: <u>BOPCO</u>				City: _____																						
Project Name: <u>PLU 261</u>				State: _____ Zip: _____																						
Project Location: <u>Eddy Co</u>				Phone #: _____																						
Sampler Name: <u>[Signature]</u>				Fax #: _____																						
FOR LAB USE ONLY		GRAB OR (COMP. # CONTAINERS)	MATRIX						PRESERV		SAMPLING															
Lab I.D.	Sample I.D.		GROUNDWATER	WASTEWATER	SOIL	OIL	SLUDGE	OTHER	ACID/BASE	ICE/COOL	OTHER	DATE	TIME													
A20425-11	Sample 7 @ 6"	1			X					X		7/20	1530	X												
12	Sample 8 @ 6"	1											1550	X												
13	Sample 9 @ 6"	1											1610	X												

PLEASE NOTE: Liability and Damages: Cardinal's liability and client's exclusive remedy for any claim arising whether based in contract or tort, shall be limited to the amount paid by the client for the analyses. All claims, including those for negligence and any other cause whatsoever shall be deemed waived unless made in writing and received by Cardinal within 20 days after completion of the applicable service. In no event shall Cardinal be liable for incidental or consequential damages, including without limitation, business interruptions, loss of use, or loss of profits incurred by client, its subsidiaries, affiliates or customers, arising out of or related to the performance of services hereunder by Cardinal, regardless of whether such claim is based upon any of the above stated reasons or otherwise.

Relinquished By: <u>[Signature]</u>	Date: <u>7-27-10</u>	Received By: <u>[Signature]</u>	Phone Result: <input type="checkbox"/> Yes <input type="checkbox"/> No	Add'l Phone #:
	Time: <u>10:20</u>		Fax Result: <input type="checkbox"/> Yes <input type="checkbox"/> No	Add'l Fax #:
Relinquished By: <u>[Signature]</u>	Date: _____	Received By: <u>Gadi Benson</u>	REMARKS:	
	Time: _____			
Delivered By: (Circle One)		Sample Condition	CHECKED BY: <u>[Signature]</u>	
Sampler - UPS - Bus - Other:		Cool <input checked="" type="checkbox"/> Intact <input checked="" type="checkbox"/>		
		Yes <input type="checkbox"/> No <input type="checkbox"/>		

† Cardinal cannot accept verbal changes. Please fax written changes to 505-393-2476

#26

August 12, 2010

CAMILLE BRYANT

BASIN ENVIRONMENTAL CONSULTING

P. O. BOX 381

LOVINGTON, NM 88260

RE: PLU 261

Enclosed are the results of analyses for samples received by the laboratory on 08/10/10 8:40.

Cardinal Laboratories is accredited through Texas NELAP for:

Method SW-846 8021	Benzene, Toluene, Ethyl Benzene, and Total Xylenes
Method SW-846 8260	Benzene, Toluene, Ethyl Benzene, and Total Xylenes
Method TX 1005	Total Petroleum Hydrocarbons

Certificate number T104704398-08-TX. Accreditation applies to solid and chemical materials and non-potable water matrices.

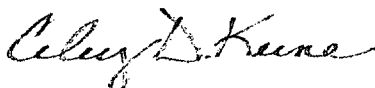
Cardinal Laboratories is accredited through the State of Colorado Department of Public Health and Environment for:

Method EPA 552.2	Haloacetic Acids (HAA-5)
Method EPA 524.2	Total Trihalomethanes (TTHM)
Method EPA 524.4	Regulated VOCs (V2, V3)

Accreditation applies to public drinking water matrices.

This report meets NELAP requirements and is made up of a cover page, analytical results, and a copy of the original chain-of-custody. If you have any questions concerning this report, please feel free to contact me.

Sincerely,



Celey D. Keene
Lab Director/Quality Manager

Analytical Results For:

BASIN ENVIRONMENTAL CONSULTING
CAMILLE BRYANT
P. O. BOX 381
LOVINGTON NM, 88260
Fax To: (575) 396-1429

Received: 08/10/2010
Reported: 08/12/2010
Project Name: PLU 261
Project Number: NOT GIVEN
Project Location: EDDY COUNTY, NM

Sampling Date: 07/20/2010
Sampling Type: Soil
Sampling Condition: Cool & Intact
Sample Received By: Jodi Henson

Sample ID: SAMPLE 2 @ 4' (H020591-01)

Chloride, SM4500Cl-B		mg/kg		Analyzed By: HM					
Analyte	Result	Reporting Limit	Analyzed	Method Blank	BS	% Recovery	True Value QC	RPD	Qualifier
Chloride	64.0	16.0	08/11/2010	ND	432	108	400	0.00	

Sample ID: SAMPLE 2 @ 6' (H020591-02)

Chloride, SM4500Cl-B		mg/kg		Analyzed By: HM					
Analyte	Result	Reporting Limit	Analyzed	Method Blank	BS	% Recovery	True Value QC	RPD	Qualifier
Chloride	224	16.0	08/11/2010	ND	432	108	400	0.00	

Sample ID: SAMPLE 2 @ 7' (H020591-03)

Chloride, SM4500Cl-B		mg/kg		Analyzed By: HM					
Analyte	Result	Reporting Limit	Analyzed	Method Blank	BS	% Recovery	True Value QC	RPD	Qualifier
Chloride	384	16.0	08/11/2010	ND	432	108	400	0.00	

Sample ID: SAMPLE 2 @ 8' (H020591-04)

Chloride, SM4500Cl-B		mg/kg		Analyzed By: HM					
Analyte	Result	Reporting Limit	Analyzed	Method Blank	BS	% Recovery	True Value QC	RPD	Qualifier
Chloride	272	16.0	08/11/2010	ND	432	108	400	0.00	

Cardinal Laboratories

*=Accredited Analyte

PLEASE NOTE: Liability and Damages. Cardinal's liability and client's exclusive remedy for any claim arising, whether based in contract or tort, shall be limited to the amount paid by client for analyses. All claims, including those for negligence and any other cause whatsoever shall be deemed waived unless made in writing and received by Cardinal within thirty (30) days after completion of the applicable service. In no event shall Cardinal be liable for incidental or consequential damages, including, without limitation, business interruptions, loss of use, or loss of profits incurred by client, its subsidiaries, affiliates or successors arising out of or related to the performance of the services hereunder by Cardinal, regardless of whether such claim is based upon any of the above stated reasons or otherwise. Results relate only to the samples identified above. This report shall not be reproduced except in full with written approval of Cardinal Laboratories.



Celey D. Keene, Lab Director/Quality Manager

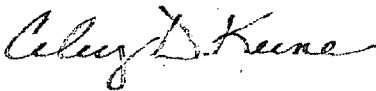
Notes and Definitions

ND	Analyte NOT DETECTED at or above the reporting limit
RPD	Relative Percent Difference
**	Samples not received at proper temperature of 6°C or below.
***	Insufficient time to reach temperature.
-	Chloride by SM4500Cl-B does not require samples be received at or below 6°C
	Samples reported on an as received basis (wet) unless otherwise noted on report

Cardinal Laboratories

*=Accredited Analyte

PLEASE NOTE: Liability and Damages. Cardinal's liability and client's exclusive remedy for any claim arising, whether based in contract or tort, shall be limited to the amount paid by client for analyses. All claims, including those for negligence and any other cause whatsoever shall be deemed waived unless made in writing and received by Cardinal within thirty (30) days after completion of the applicable service. In no event shall Cardinal be liable for incidental or consequential damages, including, without limitation, business interruptions, loss of use, or loss of profits incurred by client, its subsidiaries, affiliates or successors arising out of or related to the performance of the services hereunder by Cardinal, regardless of whether such claim is based upon any of the above stated reasons or otherwise. Results relate only to the samples identified above. This report shall not be reproduced except in full with written approval of Cardinal Laboratories.



Celey D. Keene, Lab Director/Quality Manager



Page 4 of 4

March 19, 2011

BEN J. ARGUIJO

Basin Environmental Service

P.O. Box 301

Lovington, NM 88260

RE: POKER LAKE 261

Enclosed are the results of analyses for samples received by the laboratory on 03/15/11 16:39.

Cardinal Laboratories is accredited through Texas NELAP for:

Method SW-846 8021	Benzene, Toluene, Ethyl Benzene, and Total Xylenes
Method SW-846 8260	Benzene, Toluene, Ethyl Benzene, and Total Xylenes
Method TX 1005	Total Petroleum Hydrocarbons

Certificate number T104704398-08-TX. Accreditation applies to solid and chemical materials and non-potable water matrices.

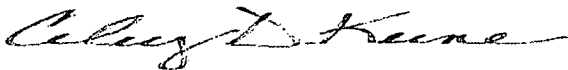
Cardinal Laboratories is accredited through the State of Colorado Department of Public Health and Environment for:

Method EPA 552.2	Haloacetic Acids (HAA-5)
Method EPA 524.2	Total Trihalomethanes (TTHM)
Method EPA 524.4	Regulated VOCs (V2, V3)

Accreditation applies to public drinking water matrices.

This report meets NELAP requirements and is made up of a cover page, analytical results, and a copy of the original chain-of-custody. If you have any questions concerning this report, please feel free to contact me.

Sincerely,



Celey D. Keene

Lab Director/Quality Manager

Analytical Results For:

Basin Environmental Service
BEN J. ARGUIJO
P.O. Box 301
Lovington NM, 88260
Fax To: (575) 396-1429

Received: 03/15/2011
Reported: 03/19/2011
Project Name: POKER LAKE 261
Project Number: NONE GIVEN
Project Location: EDDY COUNTY, NM

Sampling Date: 03/14/2011
Sampling Type: Soil
Sampling Condition: Cool & Intact
Sample Received By: Jodi Henson

Sample ID: NORTH WALL 2' BGS (H100504-01)

Chloride, SM4500Cl-B		mg/kg	Analyzed By: HM						
Analyte	Result	Reporting Limit	Analyzed	Method Blank	BS	% Recovery	True Value QC	RPD	Qualifier
Chloride	<16.0	16.0	03/16/2011	ND	400	100	400	0.00	
TPH 8015M		mg/kg	Analyzed By: CK/						
Analyte	Result	Reporting Limit	Analyzed	Method Blank	BS	% Recovery	True Value QC	RPD	Qualifier
GRO C6-C10	<10.0	10.0	03/17/2011	ND	217	109	200	6.43	
DRO >C10-C28	<10.0	10.0	03/17/2011	ND	192	96.2	200	5.24	
EXT DRO >C28-C35	<10.0	10.0	03/17/2011	ND					
<i>Surrogate: 1-Chlorooctane</i>									
	109 %	70-130							
<i>Surrogate: 1-Chlorooctadecane</i>									
	109 %	70-130							

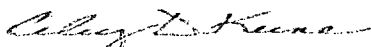
Sample ID: WEST WALL 2' BGS (H100504-02)

Chloride, SM4500Cl-B		mg/kg	Analyzed By: HM						
Analyte	Result	Reporting Limit	Analyzed	Method Blank	BS	% Recovery	True Value QC	RPD	Qualifier
Chloride	16.0	16.0	03/16/2011	ND	400	100	400	0.00	
TPH 8015M		mg/kg	Analyzed By: CK/						
Analyte	Result	Reporting Limit	Analyzed	Method Blank	BS	% Recovery	True Value QC	RPD	Qualifier
GRO C6-C10	<10.0	10.0	03/17/2011	ND	217	109	200	6.43	
DRO >C10-C28	<10.0	10.0	03/17/2011	ND	192	96.2	200	5.24	
EXT DRO >C28-C35	<10.0	10.0	03/17/2011	ND					
<i>Surrogate: 1-Chlorooctane</i>									
	111 %	70-130							
<i>Surrogate: 1-Chlorooctadecane</i>									
	115 %	70-130							

Cardinal Laboratories

*=Accredited Analyte

PLEASE NOTE: Liability and Damages. Cardinal's liability and client's exclusive remedy for any claim arising, whether based in contract or tort, shall be limited to the amount paid by client for analyses. All claims, including those for negligence and any other cause whatsoever shall be deemed waived unless made in writing and received by Cardinal within thirty (30) days after completion of the applicable service. In no event shall Cardinal be liable for incidental or consequential damages, including, without limitation, business interruptions, loss of use, or loss of profits incurred by client, its subsidiaries, affiliates or successors arising out of or related to the performance of the services hereunder by Cardinal, regardless of whether such claim is based upon any of the above stated reasons or otherwise. Results relate only to the samples identified above. This report shall not be reproduced except in full with written approval of Cardinal Laboratories.



Celey D. Keene, Lab Director/Quality Manager

Analytical Results For:

Basin Environmental Service
BEN J. ARGUIJO
P.O. Box 301
Lovington NM, 88260
Fax To: (575) 396-1429

Received: 03/15/2011
Reported: 03/19/2011
Project Name: POKER LAKE 261
Project Number: NONE GIVEN
Project Location: EDDY COUNTY, NM

Sampling Date: 03/14/2011
Sampling Type: Soil
Sampling Condition: Cool & Intact
Sample Received By: Jodi Henson

Sample ID: EAST WALL 2' BGS (H100504-03)

Chloride, SM4500Cl-B		mg/kg	Analyzed By: HM						
Analyte	Result	Reporting Limit	Analyzed	Method Blank	BS	% Recovery	True Value QC	RPD	Qualifier
Chloride	16.0	16.0	03/16/2011	ND	400	100	400	0.00	
TPH 8015M		mg/kg	Analyzed By: CK/						
Analyte	Result	Reporting Limit	Analyzed	Method Blank	BS	% Recovery	True Value QC	RPD	Qualifier
GRO C6-C10	<10.0	10.0	03/17/2011	ND	217	109	200	6.43	
DRO >C10-C28	<10.0	10.0	03/17/2011	ND	192	96.2	200	5.24	
EXT DRO >C28-C35	<10.0	10.0	03/17/2011	ND					
Surrogate: 1-Chlorooctane 109 % 70-130									
Surrogate: 1-Chlorooctadecane 111 % 70-130									


Sample ID: FLOOR 2' BGS (H100504-04)

Chloride, SM4500Cl-B		mg/kg	Analyzed By: HM						
Analyte	Result	Reporting Limit	Analyzed	Method Blank	BS	% Recovery	True Value QC	RPD	Qualifier
Chloride	<16.0	16.0	03/16/2011	ND	400	100	400	0.00	
TPH 8015M		mg/kg	Analyzed By: CK/						
Analyte	Result	Reporting Limit	Analyzed	Method Blank	BS	% Recovery	True Value QC	RPD	Qualifier
GRO C6-C10	<10.0	10.0	03/17/2011	ND	217	109	200	6.43	
DRO >C10-C28	<10.0	10.0	03/17/2011	ND	192	96.2	200	5.24	
EXT DRO >C28-C35	<10.0	10.0	03/17/2011	ND					
Surrogate: 1-Chlorooctane 108 % 70-130									
Surrogate: 1-Chlorooctadecane 107 % 70-130									

Cardinal Laboratories

*=Accredited Analyte

PLEASE NOTE: Liability and Damages. Cardinal's liability and client's exclusive remedy for any claim arising, whether based in contract or tort, shall be limited to the amount paid by client for analyses. All claims, including those for negligence and any other cause whatsoever shall be deemed waived unless made in writing and received by Cardinal within thirty (30) days after completion of the applicable service. In no event shall Cardinal be liable for incidental or consequential damages, including, without limitation, business interruptions, loss of use, or loss of profits incurred by client, its subsidiaries, affiliates or successors arising out of or related to the performance of the services hereunder by Cardinal, regardless of whether such claim is based upon any of the above stated reasons or otherwise. Results relate only to the samples identified above. This report shall not be reproduced except in full with written approval of Cardinal Laboratories.



Celey D. Keene, Lab Director/Quality Manager

Analytical Results For:

Basin Environmental Service
BEN J. ARGUIJO
P.O. Box 301
Lovington NM, 88260
Fax To: (575) 396-1429

Received: 03/15/2011
Reported: 03/19/2011
Project Name: POKER LAKE 261
Project Number: NONE GIVEN
Project Location: EDDY COUNTY, NM

Sampling Date: 03/14/2011
Sampling Type: Soil
Sampling Condition: Cool & Intact
Sample Received By: Jodi Henson

Sample ID: SOUTH WALL 2' BGS (H100504-05)
Chloride, SM4500Cl-B
mg/kg
Analyzed By: HM

Analyte	Result	Reporting Limit	Analyzed	Method Blank	BS	% Recovery	True Value QC	RPD	Qualifier
Chloride	<16.0	16.0	03/16/2011	ND	400	100	400	0.00	

TPH 8015M
mg/kg
Analyzed By: CK/

Analyte	Result	Reporting Limit	Analyzed	Method Blank	BS	% Recovery	True Value QC	RPD	Qualifier
GRO C6-C10	<10.0	10.0	03/17/2011	ND	217	109	200	6.43	
DRO >C10-C28	<10.0	10.0	03/17/2011	ND	192	96.2	200	5.24	
EXT DRO >C28-C35	<10.0	10.0	03/17/2011	ND					

Surrogate: 1-Chlorooctane 120 % 70-130

Surrogate: 1-Chlorooctadecane 123 % 70-130

Sample ID: STOCK PILE (H100504-06)
Chloride, SM4500Cl-B
mg/kg
Analyzed By: HM

Analyte	Result	Reporting Limit	Analyzed	Method Blank	BS	% Recovery	True Value QC	RPD	Qualifier
Chloride	112	16.0	03/16/2011	ND	400	100	400	0.00	

TPH 8015M
mg/kg
Analyzed By: CK/

Analyte	Result	Reporting Limit	Analyzed	Method Blank	BS	% Recovery	True Value QC	RPD	Qualifier
GRO C6-C10	<10.0	10.0	03/17/2011	ND	217	109	200	6.43	
DRO >C10-C28	11.2	10.0	03/17/2011	ND	192	96.2	200	5.24	
EXT DRO >C28-C35	<10.0	10.0	03/17/2011	ND					

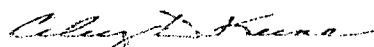
Surrogate: 1-Chlorooctane 116 % 70-130

Surrogate: 1-Chlorooctadecane 113 % 70-130

Cardinal Laboratories

*=Accredited Analyte

PLEASE NOTE: Liability and Damages. Cardinal's liability and client's exclusive remedy for any claim arising, whether based in contract or tort, shall be limited to the amount paid by client for analyses. All claims, including those for negligence and any other cause whatsoever shall be deemed waived unless made in writing and received by Cardinal within thirty (30) days after completion of the applicable service. In no event shall Cardinal be liable for incidental or consequential damages, including, without limitation, business interruptions, loss of use, or loss of profits incurred by client, its subsidiaries, affiliates or successors arising out of or related to the performance of the services hereunder by Cardinal, regardless of whether such claim is based upon any of the above stated reasons or otherwise. Results relate only to the samples identified above. This report shall not be reproduced except in full with written approval of Cardinal Laboratories.



Celey D. Keene, Lab Director/Quality Manager

Notes and Definitions

ND Analyte NOT DETECTED at or above the reporting limit

RPD Relative Percent Difference

** Samples not received at proper temperature of 6°C or below.

*** Insufficient time to reach temperature.

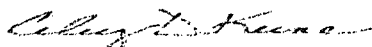
- Chloride by SM4500Cl-B does not require samples be received at or below 6°C

Samples reported on an as received basis (wet) unless otherwise noted on report

Cardinal Laboratories

* = Accredited Analyte

PLEASE NOTE: Liability and Damages. Cardinal's liability and client's exclusive remedy for any claim arising, whether based in contract or tort, shall be limited to the amount paid by client for analyses. All claims, including those for negligence and any other cause whatsoever shall be deemed waived unless made in writing and received by Cardinal within thirty (30) days after completion of the applicable service. In no event shall Cardinal be liable for incidental or consequential damages, including, without limitation, business interruptions, loss of use, or loss of profits incurred by client, its subsidiaries, affiliates or successors arising out of or related to the performance of the services hereunder by Cardinal, regardless of whether such claim is based upon any of the above stated reasons or otherwise. Results relate only to the samples identified above. This report shall not be reproduced except in full with written approval of Cardinal Laboratories.



Celey D. Keene, Lab Director/Quality Manager



CHAIN-OF-CUSTODY AND ANALYSIS REQUEST

101 East Marland, Hobbs, NM 88240
(575) 393-2326 FAX (575) 393-2476

Company Name: Basin Environmental Service Technologies, LLC				BILL TO				ANALYSIS REQUEST																		
Project Manager: Ben J. Arguilo				P.O. #:																						
Address: P.O. Box 301				Company: BOPCO, LP																						
City: Lovington		State: NM Zip: 88260		Attn: Tony Savoie																						
Phone #: (575) 396-2378		Fax #: (575) 396-1429		Address: 522 W. Mermod																						
Project #:		Project Owner: BOPCO, LP		City: Carlsbad																						
Project Name: Poker Lake 261				State: NM Zip: 88220																						
Project Location: EDDY NM				Phone #: (432) 556-8730																						
Sampler Name: Jody Walkers				Fax #:																						
FOR LAB USE ONLY																										
Lab I.D.	Sample I.D.	(C)RAB OR (C)OUP	# CONTAINERS	MATRIX					PRESERV.		SAMPLING		BODISM	Chlorides												
				GROUNDWATER	WASTEWATER	SOIL	OIL	SLUDGE	OTHER	ACID/BASE	ICE / COOL	OTHER			DATE	TIME										
H100504-1	North wall 2' BGS	6	1			X				X					3-14-11	8:50AM	X	X								
2	West wall 2' BGS	6	1			X				X					3-14-11	9:20AM	X	X								
3	EAST wall 2' BGS	6	1			X				X					3-14-11	9:10AM	X	X								
4	Floor 2' BGS	6	1			X				X					3-14-11	9:20AM	X	X								
5	South wall 2' BGS	6	1			X				X					3-14-11	9:30AM	X	X								
6	Stock Pile	6	1			X				X					3-14-11	9:40AM	X	X								

PLEASE NOTE: Liability and Damages. Cardinal's liability and client's exclusive remedy for any claim arising whether based in contract or tort, shall be limited to the amount paid by the client for the analyses. All claims, including those for negligence and any other cause whatsoever shall be deemed waived unless made in writing and received by Cardinal within 30 days after completion of the applicable service. In no event shall Cardinal be liable for incidental or consequential damages, including without limitation, business interruptions, loss of use, or loss of profits incurred by client, its subsidiaries, affiliates or successors arising out of or related to the performance of services hereunder by Cardinal, regardless of whether such claim is based upon any of the above stated reasons or otherwise.

Relinquished By:	Date: 3/15/11 Time: 4:39	Received By: Jodi Johnson	Phone Result: <input type="checkbox"/> Yes <input type="checkbox"/> No	Add'l Phone #:
Relinquished By:	Date:	Received By:	Fax Result: <input type="checkbox"/> Yes <input type="checkbox"/> No	Add'l Fax #:
Delivered By: (Circle One) Sampler - UPS - Bus - Other: 3°C			REMARKS:	
Sample Condition Cool Intact <input checked="" type="checkbox"/> Yes <input type="checkbox"/> No		CHECKED BY:	Please email results to pm@basinenv.com & TSavoie@BassPet.com	

† Cardinal cannot accept verbal changes. Please fax written changes to 505-393-2476