

Basin Environmental Service Technologies, LLC

3100 Plains Highway
P. O. Box 301
Lovington, New Mexico 88260

jwlowry@basinenv.com

Office: (575) 396-2378

Fax: (575) 396-1429



REMEDIATION SUMMARY AND RISKED-BASED SITE CLOSURE REQUEST

**BOPCO, LP
POKER LAKE UNIT WELL #205 AT PLU #158 BATTERY
Eddy County, New Mexico
Unit Letter "A" (NE/NE), Section 7, Township 24 South, Range 30 East
Latitude 32.237400° North, Longitude 103.914150° West
NMOCD Reference #s 2RP-_____**

Prepared For:

BOPCO, LP
522 W. Mermod, Suite 704
Carlsbad, New Mexico 88220

Prepared By:

Basin Environmental Service Technologies, LLC
3100 Plains Highway
Lovington, New Mexico 88260

September 2012

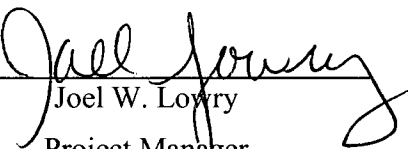

Joel W. Lowry
Project Manager

TABLE OF CONTENTS

1.0	INTRODUCTION AND BACKGROUND INFORMATION.....	1
2.0	NMOCD SITE CLASSIFICATION.....	2
3.0	SUMMARY OF SOIL REMEDIATION ACTIVITIES	2
4.0	QA/QC PROCEDURES.....	5
4.1	Soil Sampling.....	5
4.2	Decontamination of Equipment.....	6
4.3	Laboratory.....	6
5.0	REPORTING	6
6.0	LIMITATIONS.....	6
7.0	DISTRIBUTION.....	7

FIGURES

Figure 1 – Site Location Map

Figure 2 – Site & Sample Location Map

TABLES

Table 1 – Concentrations of Benzene, BTEX, TPH & Chloride in Soil

APPENDICES

Appendix A – Release Notification and Corrective Action (Form C-141)

Appendix B – Photographs

Appendix C – Laboratory Analytical Reports

1.0 INTRODUCTION AND BACKGROUND INFORMATION

Basin Environmental Service Technologies, LLC (Basin), on behalf of BOPCO, LP (BOPCO), has prepared this *Remediation Summary and Site Closure Request* for the release site known as Poker Lake Unit Well #205 at PLU #158 Battery. The legal description of the release site is Unit Letter "A" (NE/NE), Section 7, Township 24 South, Range 30 East, in Eddy County, New Mexico. The geographic coordinates of the release site are 32.237400° North latitude and 103.914150° West longitude. The property affected by the release is owned by The United States Department of the Interior - Bureau of Land Management (BLM). Please reference Figure 1 for a "Site Location Map" and Figure 2 for "Site & Sample Location Map".

On September 22, 2011, BOPCO discovered a release had occurred on the Poker Lake Unit #205 Flowline north of the Poker Lake Unit #158 Battery. The release was attributed to the failure of a two and three eighths inch (2 3/8") flowline from the PLU-205 pumping well. The release was reported to the New Mexico Oil Conservation Division (NMOCD) Artesia District Office on September 22, 2011. The "Release Notification and Corrective Action" (Form C-141) indicated approximately thirty (30) barrels of crude oil was released, with approximately twenty-five (25) barrels of crude oil being recovered. During initial response activities a repair clamp was installed on the line and a vacuum truck was utilized to recover free-standing fluids. The release affected approximately three hundred square feet (300 ft²) of pasture land on the north side of the battery pad. A Form C-141, dated is provided as Appendix A. General Photographs of the release site are provided as Appendix B.

2.0 NMOCD SITE CLASSIFICATION

A search of the New Mexico Water Rights Reporting System (NMWRRS) database maintained by the New Mexico Office of the State Engineer (NMOSE) indicated information was unavailable for Section 7, Township 24 South, Range 30 East. A depth to groundwater reference map utilized by the NMOCD indicates groundwater should be encountered at approximately one hundred fifty feet (150') to one hundred seventy-five feet (175') below ground surface (bgs). Based on the NMOCD ranking system, zero (0) points will be assigned to the site as a result of this criterion.

A search of the NMWRRS database indicated there are no water wells within 1,000 feet of the release. Based on the NMOCD ranking system, zero (0) points will be assigned to the site as a result of this criterion.

There are no surface water bodies within 1,000 feet of the release. Based on the NMOCD ranking system, zero (0) points will be assigned to the site as a result of this criterion.

NMOCD guidelines indicate the Poker Lake Unit Well #205 at Battery PLU-158 release site has an initial ranking score of zero (0) points. The soil remediation levels for a site with a ranking score of zero (0) points are as follows:

- Benzene – 10 mg/Kg (ppm)
- BTEX – 50 mg/Kg (ppm)

- TPH – 5,000 mg/Kg (ppm)

The New Mexico Administrative Code (NMAC) does not currently specify a remediation level for chloride concentrations in soil. Chloride remediation levels are set by the NMOCD on a site-specific basis.

3.0 SUMMARY OF SOIL REMEDIATION ACTIVITIES

On July 25, 2012, following initial response activities, excavation of impacted soil commenced at the release site. A Photo-Ionization Detector (PID) and chloride field kit were used to field screen the horizontal and vertical extent of impacted soil and to guide the excavation. Soil samples were collected and submitted to Cardinal Laboratories in Hobbs, New Mexico, for analysis of benzene, ethylbenzene, toluene, and xylene (BTEX) using EPA SW-846-8021b, total petroleum hydrocarbon (TPH) using EPA SW-846 8015M, and/or chloride concentrations using EPA method 4500 Cl-B. The excavated soil was stockpiled on-site pending final disposition.

On July 27, 2012, five (5) soil samples (North S.W., South S.W., East S.W., West S.W. and Floor @ 4') were collected from the excavation floor and sidewalls and submitted to the laboratory for analysis of TPH and chloride concentrations. Laboratory analytical results indicated TPH concentrations ranged from 63.5 mg/Kg for soil sample South S.W. to 21,380 mg/Kg for soil sample West S.W. Laboratory analytical results indicated chloride concentrations ranged from 128 mg/Kg for soil sample South S.W. to 4,080 mg/Kg for soil sample West S.W. Soil sample Floor @ 4' was also analyzed for constituent concentrations of BTEX, which were determined to be less than the appropriate laboratory method detection limit (MDL) for each constituent. The excavation was advanced in the areas represented by soil samples North S.W., South S.W., East S.W. and West S.W.

On August 29, 2012, six (6) soil samples (Bottom Hole, North Wall, South Wall, East Wall, West Wall, and Bottom Hole 24") were collected from the excavation floor and sidewalls and submitted to the laboratory for analysis of TPH and chloride concentrations. Laboratory analytical results indicated TPH concentrations ranged from less than the appropriate laboratory MDL for soil samples North Wall, South Wall, East Wall, West Wall, and Bottom Hole 24" to 15.9 mg/Kg for soil sample Bottom Hole. Laboratory analytical results indicated chloride concentrations ranged from 48.0 mg/Kg for soil sample West Wall to 4,160 mg/Kg for soil sample Bottom Hole.

On September 7, 2012, a 20-mil polyurethane liner was installed in the floor of the excavation at approximately two feet (2') bgs. This engineer control was designed to inhibit the vertical migration of contaminants left in-situ. On installing the approved liner, the excavation was backfilled with locally purchased, non-impacted material.

Between September 7, 2012, and September 11, 2012, approximately two hundred forty cubic yards (240 yd³) of impacted material was transported to Lea Land (WM-01-035), for disposal. Prior to backfilling, the final dimensions of the excavation were approximately twenty-five (25') in width, forty-five feet (45') in length and two feet (2') in depth.

4.0 QA/QC PROCEDURES

4.1 Soil Sampling

Soil samples were delivered to Cardinal Laboratories, Inc., in Hobbs, New Mexico, for BTEX, TPH and/or chloride analyses using the methods described below:

- BTEX concentrations in accordance with EPA Method SW-846 8021b
- TPH concentrations in accordance with EPA Method SW-846 8015M
- Chloride concentrations in accordance with EPA Method 4500 Cl-B

4.2 Decontamination of Equipment

Cleaning of the sampling equipment was the responsibility of the environmental technician. Prior to use, and between each sample, the sampling equipment was cleaned with Liqui-Nox® detergent and rinsed with distilled water.

4.3 Laboratory Protocol

The laboratory was responsible for proper QA/QC procedures after signing the chain-of-custody form(s). These procedures were either transmitted with the laboratory reports or are on file at the laboratory.

5.0 SITE CLOSURE REQUEST

Remediation activities conducted at the Poker Lake Unit Well #205 at PLU #158 Battery met the objectives set forth during the September 6, 2012, meeting between BOPCO and NMOCD Representatives. Soil samples collected from the floor and sidewalls of the excavation were analyzed by an NMOCD-approved laboratory. Based on these analytical results and the installation of an approved polyurethane liner, Basin recommends BOPCO provide the NMOCD Artesia District Office a copy of this *Remediation Summary & Risk-Based Site Closure Request* and request the NMOCD grant closure to the Poker Lake Unit Well #205 at PLU #158 Battery release site.

6.0 LIMITATIONS

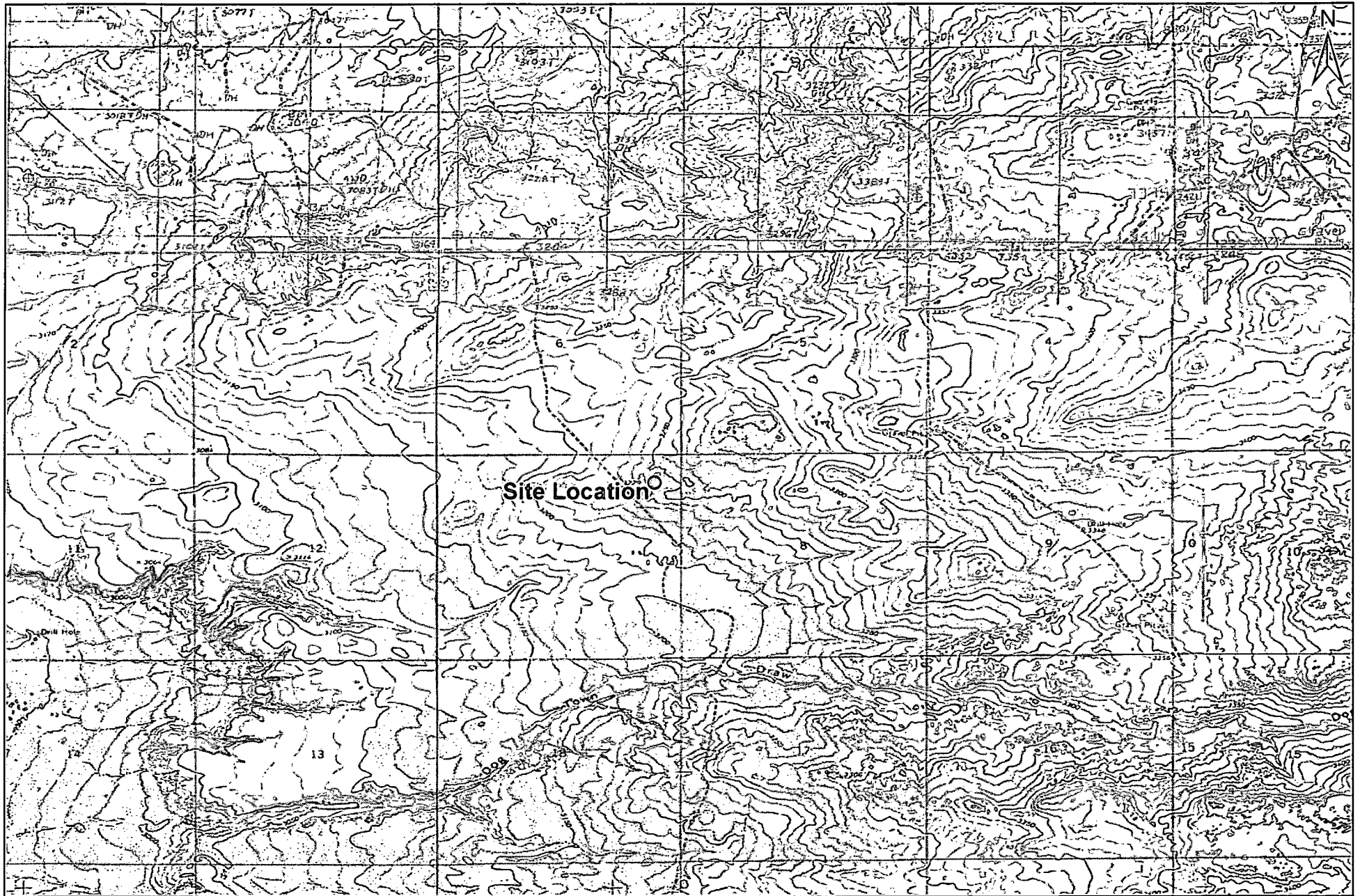
Basin Environmental Service Technologies, LLC, has prepared this *Remediation Summary & Site Closure Request* to the best of its ability. No other warranty, expressed or implied, is made or intended. Basin has examined and relied upon documents referenced in the report and on oral statements made by certain individuals. Basin has not conducted an independent examination of the facts contained in referenced materials and statements. Basin has presumed the genuineness of these documents and statements and that the information provided therein is true and accurate. Basin has prepared this report in a professional manner, using the degree of skill and care exercised by similar environmental consultants. Basin notes that the facts and conditions referenced in this report may change over time, and the conclusions and recommendations set forth herein are applicable only to the facts and conditions as described at the time of this report.

This report has been prepared for the benefit of BOPCO, LP. The information contained in this report, including all exhibits and attachments, may not be used by any other party without the express consent of Basin Environmental Service Technologies, LLC, and/or BOPCO, LP.

7.0 DISTRIBUTION:

- Copy 1: Mike Bratcher
New Mexico Energy, Minerals and Natural Resources Department
Oil Conservation Division (District 2)
1301 E. Grand Avenue
Artesia, NM 88210
- Copy 2: James Amos
Bureau of Land Management
602 E. Greene Street
Carlsbad, NM 88220
- Copy 3: Tony Savoie
BOPCO, LP
522 W. Mermod, Suite 704
Carlsbad, NM 88220
- Copy 4: Basin Environmental Service Technologies, LLC
P.O. Box 301
Lovington, NM 88260

FIGURES



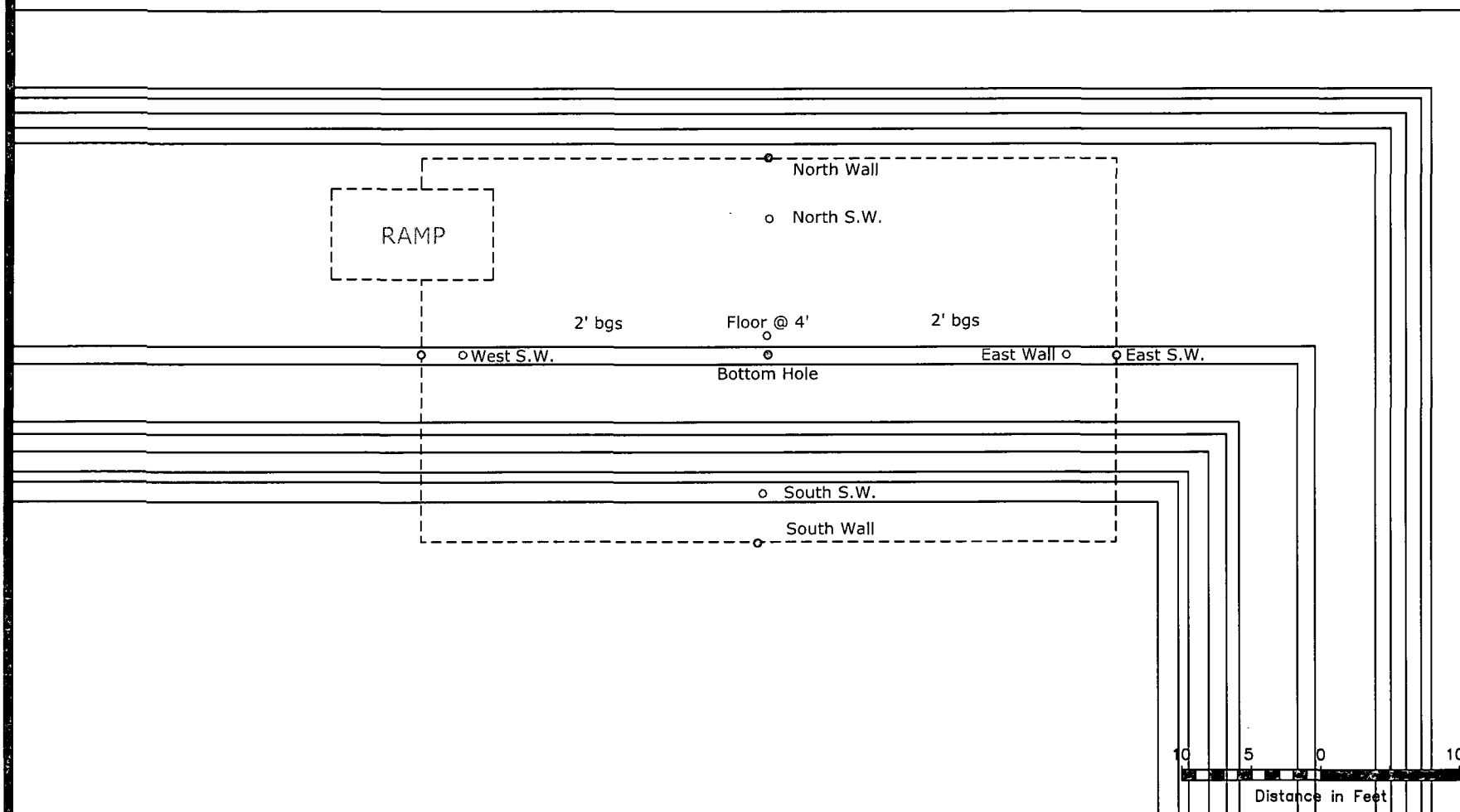
1,600 800 0 1,600 3,200
 Distance in Feet

Figure 1
Site Location Map
BOPCO, LP
Poker Lake Unit #205 at PLU #158 Battery
Eddy County, New Mexico



Basin Environmental Service Technologies, LLC
 3100 Plains Hwy.
 Lovington, NM 88260

Drawn By: BJA	Checked By: BRB
January 11, 2013	Scale: 1" = 2000'



Legend:

- Excavation Extent
- Pipeline
- Sample Location

Figure 2
Site & Sample Location Map
BOPCO, L.P.
PLU #205 at PLU #158 Battery
Eddy County, New Mexico

Basin Environmental Services

Prep By: JWL

Checked By: BJA

January 11, 2013

Scale 1"=10'

TABLES

TABLE 1

CONCENTRATIONS OF BENZENE, BTEX, TPH & CHLORIDE IN SOIL

BOPCO, LP
POKER LAKE UNIT WELL #205 at PLU #158 BATTERY
EDDY COUNTY, NEW MEXICO

SAMPLE LOCATION	SAMPLE DEPTH (BGS)	SAMPLE DATE	SOIL STATUS	METHOD: EPA SW 846-8021B, 5030					METHOD: 8015M			TOTAL TPH C ₆ -C ₃₅ (mg/Kg)	4500 CL-B CHLORIDE (mg/Kg)
				BENZENE (mg/Kg)	TOLUENE (mg/Kg)	ETHYL-BENZENE (mg/Kg)	TOTAL XYLENES (mg/Kg)	TOTAL BTEX (mg/Kg)	GRO C ₆ -C ₁₂ (mg/Kg)	DRO C ₁₂ -C ₂₈ (mg/Kg)	ORO C ₂₈ -C ₃₅ (mg/Kg)		
North S.W.	2'	7/27/2012	Excavated	-	-	-	-	-	<10.0	62.0	169	231	1,390
South S.W.	2'	7/27/2012	Excavated	-	-	-	-	-	<10.0	16.7	46.8	63.5	128
East S.W.	2'	7/27/2012	Excavated	-	-	-	-	-	<10.0	248	75.5	123.5	2,560
West S.W.	2'	7/27/2012	Excavated	-	-	-	-	-	2,980	15,900	2,500	21,380	4,080
Floor @ 4'	4'	7/27/2012	In-Situ	<0.050	<0.050	<0.050	<0.150	<0.150	<10.0	24.9	59.4	84.3	2,720
Bottom Hole	N/A	8/29/2012	In-Situ	-	-	-	-	-	<10.0	<10.0	15.9	15.9	4,160
North Wall	N/A	8/29/2012	In-Situ	-	-	-	-	-	<10.0	<10.0	<10.0	<10.0	2,240
South Wall	N/A	8/29/2012	In-Situ	-	-	-	-	-	<10.0	<10.0	<10.0	<10.0	1,390
East Wall	N/A	8/29/2012	In-Situ	-	-	-	-	-	<10.0	<10.0	<10.0	<10.0	2,160
West Wall	N/A	8/29/2012	In-Situ	-	-	-	-	-	<10.0	<10.0	<10.0	<10.0	48.0
Bottom Hole 24"	24"	8/29/2012	In-Situ	-	-	-	-	-	<10.0	<10.0	<10.0	<10.0	3,840
NMOC D Criteria				10				50				5,000	

- = Not analyzed.

APPENDICES

Appendix A

Release Notification and Corrective Action
(Form C-141)

District I
1625 N. French Dr., Hobbs, NM 88240
District II
1301 W. Grand Avenue, Artesia, NM 88210
District III
1000 Rio Brazos Road, Aztec, NM 87410
District IV
1220 S. St. Francis Dr., Santa Fe, NM 87505

State of New Mexico
Energy Minerals and Natural Resources

Oil Conservation Division
1220 South St. Francis Dr.
Santa Fe, NM 87505

Form C-141
Revised October 10, 2003

Submit 2 Copies to appropriate
District Office in accordance
with Rule 116 on back
side of form

Release Notification and Corrective Action

OPERATOR

☒ Initial Report ☐ Final Report

Name of Company BOPCO, L.P.	Contact Tony Savoie
Address 522 W. Mermod, Suite 704 Carlsbad, N.M. 88220	Telephone No. 432-556-8730
Facility Name Poker Lake Unit Well #205 at Battery PLU-158	Facility Type E&P

Surface Owner Federal	Mineral Owner Federal	Lease No
-----------------------	-----------------------	----------

LOCATION OF RELEASE

Unit Letter A	Section 7	Township 24S	Range 30E	Feet from the	North/South Line	Feet from the	East/West Line	County Eddy
------------------	--------------	-----------------	--------------	---------------	------------------	---------------	----------------	----------------

Latitude N 32.237400 Longitude W 103.914150

NATURE OF RELEASE

Type of Release: Crude Oil	Volume of Release: 30 bbls of crude oil.	Volume Recovered: 25 bbls
Source of Release: 2 7/8" flow line	Date and Hour of Occurrence 8/22/11, Hour unknown	Date and Hour of Discovery 8/22/11 8:54 a.m.
Was Immediate Notice Given? <input checked="" type="checkbox"/> Yes <input type="checkbox"/> No <input type="checkbox"/> Not Required	If YES, To Whom? Tim NMOCD	
By Whom? Tony Savoie	Date and Hour 8/22/11 1:00 p.m.	
Was a Watercourse Reached? <input type="checkbox"/> Yes <input checked="" type="checkbox"/> No	If YES, Volume Impacting the Watercourse.	

If a Watercourse was Impacted, Describe Fully.*

Describe Cause of Problem and Remedial Action Taken.* A flow line from the PLU-205 pumping well developed a leak at the PLU-158 Battery, a repair clamp was installed on the line.

Describe Area Affected and Cleanup Action Taken.* Approximately 300 sq. ft. of pasture land on the north side of the battery pad, all of the free oil was picked up with a vacuum truck. A remediation plan will be developed in accordance with the NMOCD and BLM remediation guidelines.

I hereby certify that the information given above is true and complete to the best of my knowledge and understand that pursuant to NMOCD rules and regulations all operators are required to report and/or file certain release notifications and perform corrective actions for releases which may endanger public health or the environment. The acceptance of a C-141 report by the NMOCD marked as "Final Report" does not relieve the operator of liability should their operations have failed to adequately investigate and remediate contamination that pose a threat to ground water, surface water, human health or the environment. In addition, NMOCD acceptance of a C-141 report does not relieve the operator of responsibility for compliance with any other federal, state, or local laws and/or regulations.

Signature: <u>Tony Savoie</u>		OIL CONSERVATION DIVISION	
Printed Name: Tony Savoie		Approved by District Supervisor:	
Title: Waste Mgmt. & Remediation Specialist	Approval Date:	Expiration Date:	
E-mail Address: TASavoie@BassPet.com	Conditions of Approval:	Attached <input type="checkbox"/>	
Date: 9/11/11	Phone: 432-556-8730		

* Attach Additional Sheets If Necessary

BLM 13.30
9/13/11

District I
1625 N. French Dr., Hobbs, NM 88240
District II
1301 W. Grand Avenue, Artesia, NM 88210
District III
1000 Rio Brazos Road, Aztec, NM 87410
District IV
1220 S. St. Francis Dr., Santa Fe, NM 87505

State of New Mexico
Energy Minerals and Natural Resources

Oil Conservation Division
1220 South St. Francis Dr.
Santa Fe, NM 87505

RECEIVED

JAN 31 2013

NMOCD ARTESIA

Form C-141
Revised October 10, 2003

Submit 2 Copies to appropriate
District Office in accordance
with Rule 116 on back
side of form

Release Notification and Corrective Action

OPERATOR

Initial Report

☒ Final Report

Name of Company	BOPCO, L.P.	Contact	Tony Savoie
Address	522 W. Mernod, Suite 704 Carlsbad, N.M. 88220	Telephone No.	432-556-8730
Facility Name:	Poker Lake Unit Well #205 at Battery PLU-158	Facility Type	E&P

Surface Owner:	Federal	Mineral Owner:	Federal	Lease No.	
----------------	---------	----------------	---------	-----------	--

LOCATION OF RELEASE

Unit Letter	Section	Township	Range	Feet from the	North/South Line	Feet from the	East/West Line	County
A	7	24S	30E					Eddy

Latitude N32.237400 Longitude W103.914150

NATURE OF RELEASE

Type of Release:	Crude Oil	Volume of Release	30 bbls of Crude oil	Volume Recovered	25 bbls
Source of Release:	2 7/8" flow line	Date and Hour of Occurrence	8/22/11, Hour Unknown	Date and Hour of Discovery	8/22/11 8:54 a.m.
Was Immediate Notice Given?	<input checked="" type="checkbox"/> Yes <input type="checkbox"/> No <input type="checkbox"/> Not Required	If YES, To Whom?			
By Whom?	Tony Savoie	Date and Hour: 8/22/11 1:00 p.m.			
Was a Watercourse Reached?	<input type="checkbox"/> Yes <input checked="" type="checkbox"/> No	If YES, Volume Impacting the Watercourse.			

If a Watercourse was Impacted, Describe Fully.*

Describe Cause of Problem and Remedial Action Taken: A flow line from the PLU-205 pumping well developed a leak at the PLU-158 Battery, a repair clamp was installed on the line.

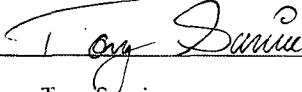
Describe Area Affected and Cleanup Action Taken.* Approximately 300 sq. ft. of pasture land on the north side of the battery pad, all of the free oil was picked up with a vacuum truck. A remediation plan will be developed in accordance with the NMOCD and BLM remediation guidelines.

Remediation activities conducted at the Poker Lake Unit Well #205 at the PLU #158 Battery met the objectives set forth during the September 6, 2012, meeting between BOPCO and NMOCD Representatives. Soil samples collected from the floor and sidewalls of the excavation were analyzed by an NMOCD-approved laboratory. On September 7, 2012, an NMOCD-approved polyurethane liner was installed in the floor of the excavation. Between September 7 and September 11, 2012, approximately 240 cy of impacted soil was excavated and transported to an NMOCD-approved disposal facility. Prior to backfilling, the final dimensions of the excavation were approximately 25' in width, 45' in length and 2' in depth.

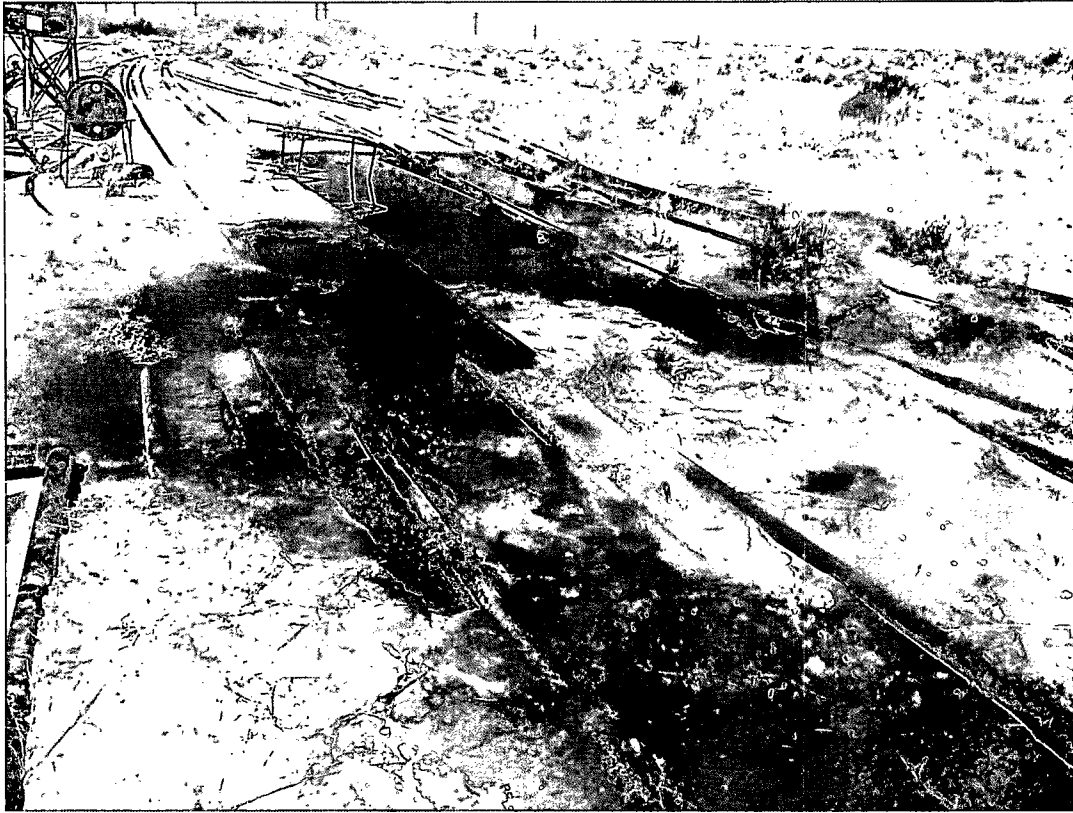
Please reference the attached Basin Environmental Services Technologies Remediation Summary and Risk-Based Site Closure Request for details of remediation activities.

I hereby certify that the information given above is true and complete to the best of my knowledge and understand that pursuant to NMOCD rules and regulations all operators are required to report and/or file certain release notifications and perform corrective actions for releases, which may endanger public health or the environment. The acceptance of a C-141 report by the NMOCD marked as "Final Report" does not relieve the operator of liability should their operations have failed to adequately investigate and remediate contamination that pose a threat to ground water, surface water, human health or the environment. In addition, NMOCD acceptance of a C-141 report does not relieve the operator of responsibility for compliance with any other federal, state, or local laws and/or regulations.

OIL CONSERVATION DIVISION

Signature: 	Approved by District Supervisor:		
Printed Name: Tony Savoie			
Title: Waste Mgmt. & Remediation Specialist	Approval Date:	Expiration Date:	
E-mail Address: TASavoie@BassPet.com	Conditions of Approval:		
Date:	Phone: 432-556-8730		

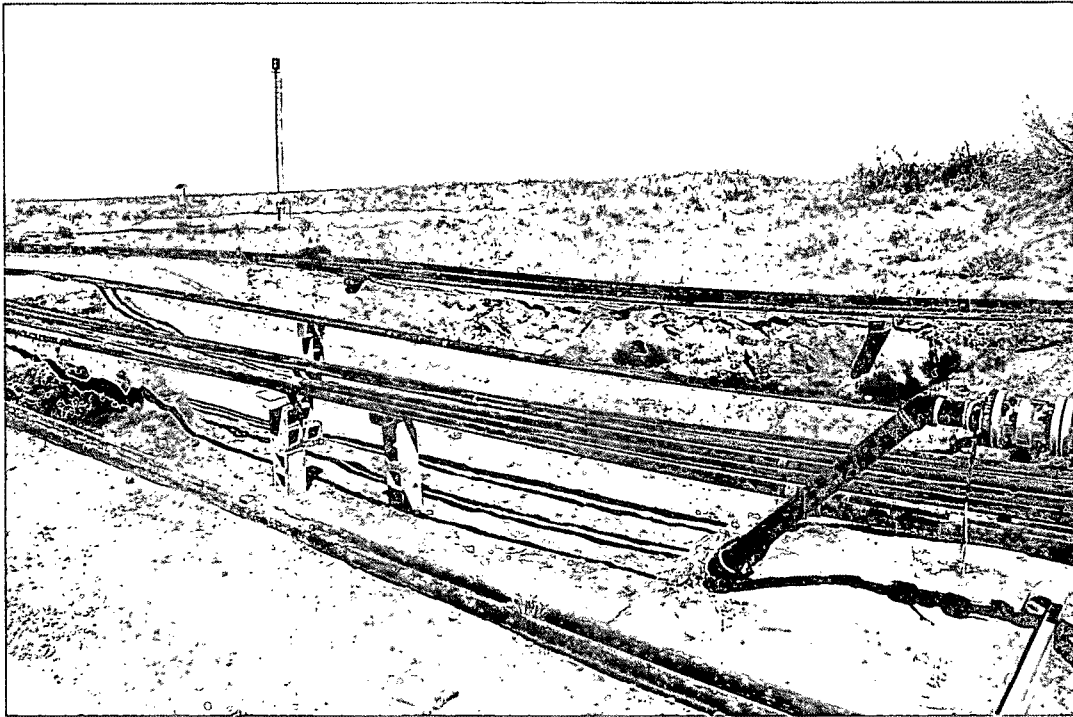
Appendix B
Photographs



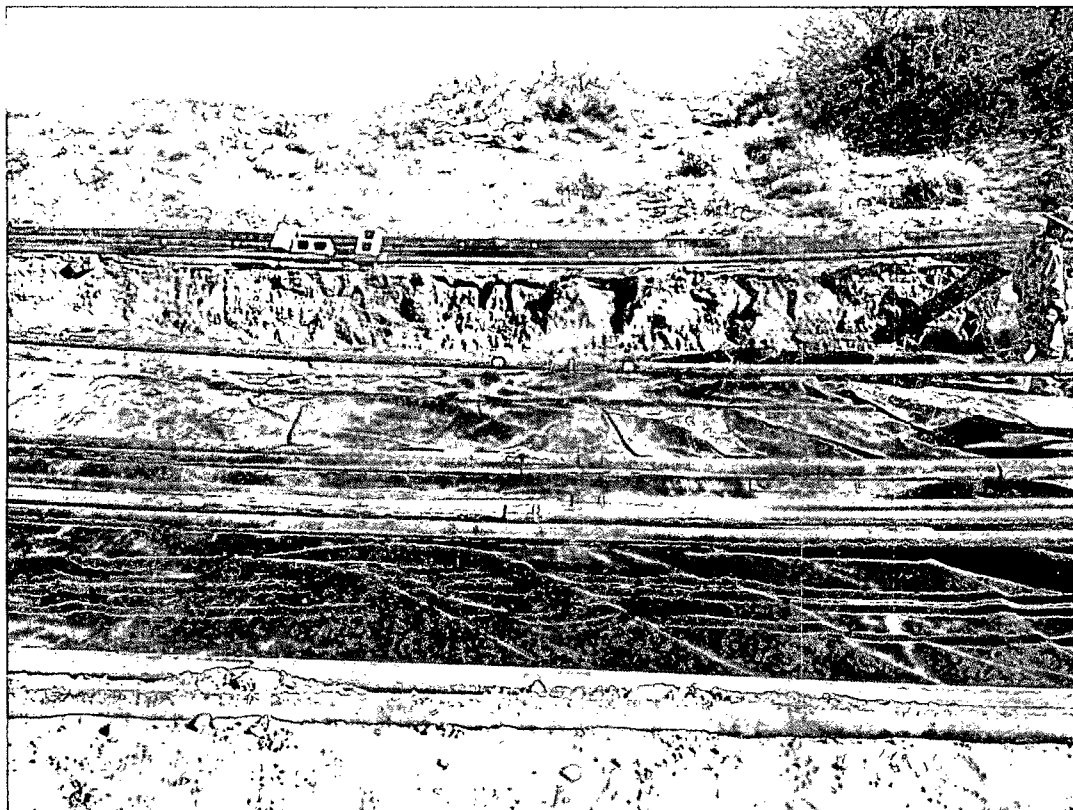
Photograph of the initial release at the Poker Lake Unit Well #205 at PLU #158 Battery.



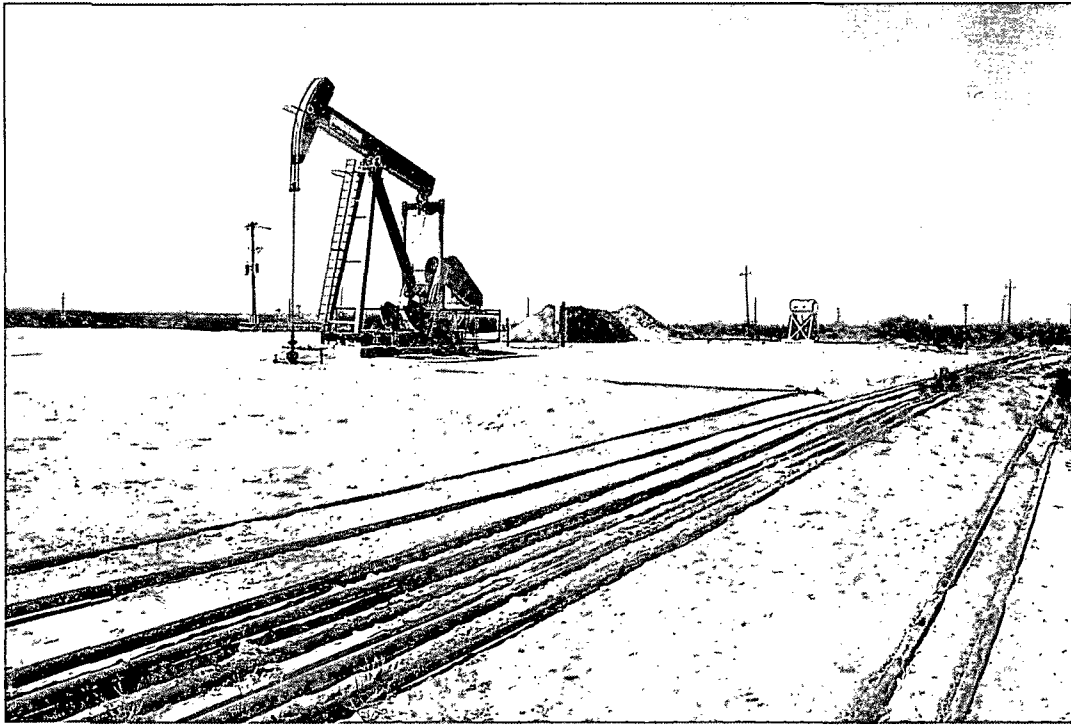
Photograph of the initial release at the Poker Lake Unit Well #205 at PLU #158 Battery.



Photograph of the Excavation at the Poker Lake Unit Well #205 at PLU #158 Battery.



Photograph of the Liner installation at the Poker Lake Unit Well #205 at PLU #158 Battery.



Photograph of the Poker Lake Unit Well #205 at PLU #158 Battery Remediation Site after being backfilled.



Photograph of the Poker Lake Unit Well #205 at PLU #158 Battery Remediation Site after being backfilled.

Appendix C

Laboratory Analytical Reports

August 06, 2012

BEN J. ARGUIJO

Basin Environmental Service

P.O. Box 301

Lovington, NM 88260

RE: PLU WELL #205 AT BATTERY PLU-158

Enclosed are the results of analyses for samples received by the laboratory on 07/30/12 15:25.

Cardinal Laboratories is accredited through Texas NELAP under certificate number T104704398-11-3. Accreditation applies to drinking water, non-potable water and solid and chemical materials. All accredited analytes are denoted by an asterisk (*). For a complete list of accredited analytes and matrices visit the TCEQ website at www.tceq.texas.gov/field/qa/lab_accred_certif.html.

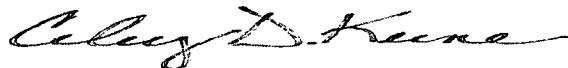
Cardinal Laboratories is accredited through the State of Colorado Department of Public Health and Environment for:

Method EPA 552.2	Haloacetic Acids (HAA-5)
Method EPA 524.2	Total Trihalomethanes (TTHM)
Method EPA 524.4	Regulated VOCs (V1, V2, V3)

Accreditation applies to public drinking water matrices.

This report meets NELAP requirements and is made up of a cover page, analytical results, and a copy of the original chain-of-custody. If you have any questions concerning this report, please feel free to contact me.

Sincerely,



Celey D. Keene

Lab Director/Quality Manager

Analytical Results For:

 Basin Environmental Service
 BEN J. ARGUIJO
 P.O. Box 301
 Lovington NM, 88260
 Fax To: (575) 396-1429

 Received: 07/30/2012
 Reported: 08/06/2012
 Project Name: PLU WELL #205 AT BATTERY PLU-158
 Project Number: NONE GIVEN
 Project Location: EDDY COUNTY, NM

 Sampling Date: 07/27/2012
 Sampling Type: Soil
 Sampling Condition: Cool & Intact
 Sample Received By: Jodi Henson

Sample ID: NORTH S. W. (H201762-01)

Chloride, SM4500Cl-B		mg/kg		Analyzed By: AP					
Analyte	Result	Reporting Limit	Analyzed	Method Blank	BS	% Recovery	True Value QC	RPD	Qualifier
Chloride	1390	16.0	08/01/2012	ND	384	96.0	400	4.08	
TPH 8015M		mg/kg		Analyzed By: MS					
Analyte	Result	Reporting Limit	Analyzed	Method Blank	BS	% Recovery	True Value QC	RPD	Qualifier
GRO C6-C10	<10.0	10.0	08/01/2012	ND	189	94.6	200	2.42	
DRO >C10-C28	62.0	10.0	08/01/2012	ND	192	95.9	200	5.37	
EXT DRO >C28-C35	169	10.0	08/01/2012	ND					

Surrogate: 1-Chlorooctane 99.3 % 65.2-140

Surrogate: 1-Chlorooctadecane 106 % 63.6-154

Sample ID: SOUTH S. W. (H201762-02)

Chloride, SM4500Cl-B		mg/kg		Analyzed By: AP					
Analyte	Result	Reporting Limit	Analyzed	Method Blank	BS	% Recovery	True Value QC	RPD	Qualifier
Chloride	128	16.0	08/01/2012	ND	384	96.0	400	4.08	
TPH 8015M		mg/kg		Analyzed By: MS					
Analyte	Result	Reporting Limit	Analyzed	Method Blank	BS	% Recovery	True Value QC	RPD	Qualifier
GRO C6-C10	<10.0	10.0	08/01/2012	ND	189	94.6	200	2.42	
DRO >C10-C28	16.7	10.0	08/01/2012	ND	192	95.9	200	5.37	
EXT DRO >C28-C35	46.8	10.0	08/01/2012	ND					

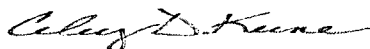
Surrogate: 1-Chlorooctane 102 % 65.2-140

Surrogate: 1-Chlorooctadecane 107 % 63.6-154

Cardinal Laboratories

*=Accredited Analyte

PLEASE NOTE: Liability and Damages. Cardinal's liability and client's exclusive remedy for any claim arising, whether based in contract or tort, shall be limited to the amount paid by client for analyses. All claims, including those for negligence and any other cause whatsoever shall be deemed waived unless made in writing and received by Cardinal within thirty (30) days after completion of the applicable service. In no event shall Cardinal be liable for incidental or consequential damages, including, without limitation, business interruptions, loss of use, or loss of profits incurred by client, its subsidiaries, affiliates or successors arising out of or related to the performance of the services hereunder by Cardinal, regardless of whether such claim is based upon any of the above stated reasons or otherwise. Results relate only to the samples identified above. This report shall not be reproduced except in full with written approval of Cardinal Laboratories.



Celey D. Keene, Lab Director/Quality Manager

Analytical Results For:

 Basin Environmental Service
 BEN J. ARGUIJO
 P.O. Box 301
 Lovington NM, 88260
 Fax To: (575) 396-1429

Received:	07/30/2012	Sampling Date:	07/27/2012
Reported:	08/06/2012	Sampling Type:	Soil
Project Name:	PLU WELL #205 AT BATTERY PLU-158	Sampling Condition:	Cool & Intact
Project Number:	NONE GIVEN	Sample Received By:	Jodi Henson
Project Location:	EDDY COUNTY, NM		

Sample ID: EAST S. W. (H201762-03)

Chloride, SM4500Cl-B		mg/kg	Analyzed By: AP						
Analyte	Result	Reporting Limit	Analyzed	Method Blank	BS	% Recovery	True Value QC	RPD	Qualifier
Chloride	2560	16.0	08/01/2012	ND	384	96.0	400	4.08	
TPH 8015M		mg/kg	Analyzed By: MS						
Analyte	Result	Reporting Limit	Analyzed	Method Blank	BS	% Recovery	True Value QC	RPD	Qualifier
GRO C6-C10	<10.0	10.0	08/01/2012	ND	189	94.6	200	2.42	
DRO >C10-C28	248	10.0	08/01/2012	ND	192	95.9	200	5.37	
EXT DRO >C28-C35	75.5	10.0	08/01/2012	ND					
<hr/>									
Surrogate: 1-Chlorooctane	94.3 %	65.2-140							
Surrogate: 1-Chlorooctadecane	96.2 %	63.6-154							

Sample ID: WEST S. W. (H201762-04)

Chloride, SM4500Cl-B		mg/kg	Analyzed By: AP						
Analyte	Result	Reporting Limit	Analyzed	Method Blank	BS	% Recovery	True Value QC	RPD	Qualifier
Chloride	4080	16.0	08/01/2012	ND	384	96.0	400	4.08	
TPH 8015M		mg/kg	Analyzed By: MS						
Analyte	Result	Reporting Limit	Analyzed	Method Blank	BS	% Recovery	True Value QC	RPD	Qualifier
GRO C6-C10	2980	50.0	08/01/2012	ND	189	94.6	200	2.42	
DRO >C10-C28	15900	50.0	08/01/2012	ND	192	95.9	200	5.37	
EXT DRO >C28-C35	2500	50.0	08/01/2012	ND					
<hr/>									
Surrogate: 1-Chlorooctane	145 %	65.2-140							
Surrogate: 1-Chlorooctadecane	76.2 %	63.6-154							

Cardinal Laboratories

*=Accredited Analyte

PLEASE NOTE: Liability and Damages. Cardinal's liability and client's exclusive remedy for any claim arising, whether based in contract or tort, shall be limited to the amount paid by client for analyses. All claims, including those for negligence and any other cause whatsoever shall be deemed waived unless made in writing and received by Cardinal within thirty (30) days after completion of the applicable service. In no event shall Cardinal be liable for incidental or consequential damages, including, without limitation, business interruptions, loss of use, or loss of profits incurred by client, its subsidiaries, affiliates or successors arising out of or related to the performance of the services hereunder by Cardinal, regardless of whether such claim is based upon any of the above stated reasons or otherwise. Results relate only to the samples identified above. This report shall not be reproduced except in full with written approval of Cardinal Laboratories.



Celey D. Keene, Lab Director/Quality Manager

Analytical Results For:

 Basin Environmental Service
 BEN J. ARGUIJO
 P.O. Box 301
 Lovington NM, 88260
 Fax To: (575) 396-1429

Received:	07/30/2012	Sampling Date:	07/27/2012
Reported:	08/06/2012	Sampling Type:	Soil
Project Name:	PLU WELL #205 AT BATTERY PLU-158	Sampling Condition:	Cool & Intact
Project Number:	NONE GIVEN	Sample Received By:	Jodi Henson
Project Location:	EDDY COUNTY, NM		

Sample ID: FLOOR @ 4' (H201762-05)

BTEX 8021B		mg/kg		Analyzed By: AP					
Analyte	Result	Reporting Limit	Analyzed	Method Blank	BS	% Recovery	True Value QC	RPD	Qualifier
Benzene*	<0.050	0.050	08/06/2012	ND	1.71	85.7	2.00	7.69	
Toluene*	<0.050	0.050	08/06/2012	ND	1.82	91.0	2.00	6.67	
Ethylbenzene*	<0.050	0.050	08/06/2012	ND	1.85	92.6	2.00	6.57	
Total Xylenes*	<0.150	0.150	08/06/2012	ND	5.58	93.0	6.00	5.76	

Surrogate: 4-Bromofluorobenzene (PIC) 100 % 89.4-126

Chloride, SM4500Cl-B		mg/kg		Analyzed By: AP					
Analyte	Result	Reporting Limit	Analyzed	Method Blank	BS	% Recovery	True Value QC	RPD	Qualifier
Chloride	2720	16.0	08/01/2012	ND	384	96.0	400	4.08	

TPH 8015M		mg/kg		Analyzed By: MS					
Analyte	Result	Reporting Limit	Analyzed	Method Blank	BS	% Recovery	True Value QC	RPD	Qualifier
GRO C6-C10	<10.0	10.0	08/01/2012	ND	189	94.6	200	2.42	
DRO >C10-C28	24.9	10.0	08/01/2012	ND	192	95.9	200	5.37	
EXT DRO >C28-C35	59.4	10.0	08/01/2012	ND					

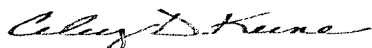
Surrogate: 1-Chlorooctane 102 % 65.2-140

Surrogate: 1-Chlorooctadecane 106 % 63.6-154

Cardinal Laboratories

*=Accredited Analyte

PLEASE NOTE: Liability and Damages. Cardinal's liability and client's exclusive remedy for any claim arising, whether based in contract or tort, shall be limited to the amount paid by client for analyses. All claims, including those for negligence and any other cause whatsoever shall be deemed waived unless made in writing and received by Cardinal within thirty (30) days after completion of the applicable service. In no event shall Cardinal be liable for incidental or consequential damages, including, without limitation, business interruptions, loss of use, or loss of profits incurred by client, its subsidiaries, affiliates or successors arising out of or related to the performance of the services hereunder by Cardinal, regardless of whether such claim is based upon any of the above stated reasons or otherwise. Results relate only to the samples identified above. This report shall not be reproduced except in full with written approval of Cardinal Laboratories.



Celey D. Keene, Lab Director/Quality Manager


Notes and Definitions

S-06	The recovery of this surrogate is outside control limits due to sample dilution required from high analyte concentration and/or matrix interference's.
ND	Analyte NOT DETECTED at or above the reporting limit
RPD	Relative Percent Difference
**	Samples not received at proper temperature of 6°C or below.
***	Insufficient time to reach temperature.
-	Chloride by SM4500Cl-B does not require samples be received at or below 6°C Samples reported on an as received basis (wet) unless otherwise noted on report

Cardinal Laboratories

* = Accredited Analyte

PLEASE NOTE: Liability and Damages. Cardinal's liability and client's exclusive remedy for any claim arising, whether based in contract or tort, shall be limited to the amount paid by client for analyses. All claims, including those for negligence and any other cause whatsoever shall be deemed waived unless made in writing and received by Cardinal within thirty (30) days after completion of the applicable service. In no event shall Cardinal be liable for incidental or consequential damages, including, without limitation, business interruptions, loss of use, or loss of profits incurred by client, its subsidiaries, affiliates or successors arising out of or related to the performance of the services hereunder by Cardinal, regardless of whether such claim is based upon any of the above stated reasons or otherwise. Results relate only to the samples identified above. This report shall not be reproduced except in full with written approval of Cardinal Laboratories.



Celey D. Keene, Lab Director/Quality Manager

CHAIN OF CUSTODY RECORD AND ANALYSIS REQUEST

101 East Marland
Hobbs, New Mexico 88240

Phone: 505-393-2326
Fax: 505-393-2476

Page 6 of 6

Project Manager: Joel Lowry PAGE 01 OF 01

Project Name: PLU Well #205 at Battery PLU-158

Company Name Basin Environmental Service Technologies, LLC

Project #:

Company Address: P. O. Box 301

Project Loc: Eddy County, NM

City/State/Zip: Lovington, NM 88260

PO #: DIRECT BILL BOPCO L.P.

Telephone No: (505) 441-2124

Fax No: (505) 396-1429

Report Format: ☒ Standard ☐ TRRP ☐ NPDES

Sampler Signature: *[Signature]*

e-mail: pm@basinenv.com

(lab use only)

ORDER #: H201762

[illegible]

Special Instructions:

EMAIL RESULTS: pm@basinenv.com ****If TPH is under 5,000 for soil sample Floor @ 4', run it for BTEX**

Laboratory Comments:

Sample Containers Intact?

VOCs Free of Headspace?

Labels on container(s)

Custody seals on container

✓ Custody seals on cooler

Sample Hand Delivered
by Samples/Client Rep. 2

by Courier? ☐ UPS ☐ DHL ☒ FedEx ☐ Lone Star

by Courier? O/S

50 °C

#76

August 31, 2012

TONY SAVOIE

Bass Enterprises

522 W. Mermod #709

Carlsbad, NM 88220

RE: PLU - 205 FLOWLINE

Enclosed are the results of analyses for samples received by the laboratory on 08/29/12 15:33.

Cardinal Laboratories is accredited through Texas NELAP under certificate number T104704398-11-3. Accreditation applies to drinking water, non-potable water and solid and chemical materials. All accredited analytes are denoted by an asterisk (*). For a complete list of accredited analytes and matrices visit the TCEQ website at www.tceq.texas.gov/field/qa/lab_accred_certif.html.

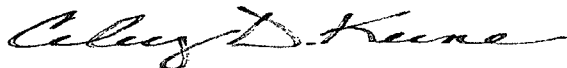
Cardinal Laboratories is accredited through the State of Colorado Department of Public Health and Environment for:

Method EPA 552.2	Haloacetic Acids (HAA-5)
Method EPA 524.2	Total Trihalomethanes (TTHM)
Method EPA 524.4	Regulated VOCs (V1, V2, V3)

Accreditation applies to public drinking water matrices.

This report meets NELAP requirements and is made up of a cover page, analytical results, and a copy of the original chain-of-custody. If you have any questions concerning this report, please feel free to contact me.

Sincerely,



Celey D. Keene

Lab Director/Quality Manager

Analytical Results For:

Bass Enterprises
TONY SAVOIE
522 W. Mermod #709
Carlsbad NM, 88220
Fax To: (505) 887-7473

Received: 08/29/2012
Reported: 08/31/2012
Project Name: PLU - 205 FLOWLINE
Project Number: NONE GIVEN
Project Location: NASH DRAW, SE CARLSBAD, NM

Sampling Date: 08/29/2012
Sampling Type: Soil
Sampling Condition: Cool & Intact
Sample Received By: Jodi Henson

Sample ID: BOTTOM HOLE (H202087-01)

Chloride, SM4500Cl-B		mg/kg	Analyzed By: HM						
Analyte	Result	Reporting Limit	Analyzed	Method Blank	BS	% Recovery	True Value QC	RPD	Qualifier
Chloride	4160	16.0	08/31/2012	ND	400	100	400	3.92	
TPH 8015M		mg/kg	Analyzed By: MS						
Analyte	Result	Reporting Limit	Analyzed	Method Blank	BS	% Recovery	True Value QC	RPD	Qualifier
GRO C6-C10	<10.0	10.0	08/30/2012	ND	199	99.6	200	2.83	
DRO >C10-C28	<10.0	10.0	08/30/2012	ND	198	98.9	200	3.32	
EXT DRO >C28-C35	15.9	10.0	08/30/2012	ND					
<hr/>									
Surrogate: 1-Chlorooctane	86.7 %	65.2-140							
Surrogate: 1-Chlorooctadecane	99.5 %	63.6-154							

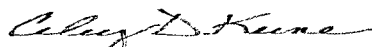
Sample ID: NORTH WALL (H202087-02)

Chloride, SM4500Cl-B		mg/kg	Analyzed By: HM						
Analyte	Result	Reporting Limit	Analyzed	Method Blank	BS	% Recovery	True Value QC	RPD	Qualifier
Chloride	2240	16.0	08/31/2012	ND	400	100	400	3.92	
TPH 8015M		mg/kg	Analyzed By: MS						
Analyte	Result	Reporting Limit	Analyzed	Method Blank	BS	% Recovery	True Value QC	RPD	Qualifier
GRO C6-C10	<10.0	10.0	08/30/2012	ND	199	99.6	200	2.83	
DRO >C10-C28	<10.0	10.0	08/30/2012	ND	198	98.9	200	3.32	
EXT DRO >C28-C35	<10.0	10.0	08/30/2012	ND					
<hr/>									
Surrogate: 1-Chlorooctane	81.1 %	65.2-140							
Surrogate: 1-Chlorooctadecane	98.1 %	63.6-154							

Cardinal Laboratories

*=Accredited Analyte

PLEASE NOTE: Liability and Damages. Cardinal's liability and client's exclusive remedy for any claim arising, whether based in contract or tort, shall be limited to the amount paid by client for analyses. All claims, including those for negligence and any other cause whatsoever shall be deemed waived unless made in writing and received by Cardinal within thirty (30) days after completion of the applicable service. In no event shall Cardinal be liable for incidental or consequential damages, including, without limitation, business interruptions, loss of use, or loss of profits incurred by client, its subsidiaries, affiliates or successors arising out of or related to the performance of the services hereunder by Cardinal, regardless of whether such claim is based upon any of the above stated reasons or otherwise. Results relate only to the samples identified above. This report shall not be reproduced except in full with written approval of Cardinal Laboratories.



Celey D. Keene, Lab Director/Quality Manager

Analytical Results For:

 Bass Enterprises
 TONY SAVOIE
 522 W. Mermod #709
 Carlsbad NM, 88220
 Fax To: (505) 887-7473

Received:	08/29/2012	Sampling Date:	08/29/2012
Reported:	08/31/2012	Sampling Type:	Soil
Project Name:	PLU - 205 FLOWLINE	Sampling Condition:	Cool & Intact
Project Number:	NONE GIVEN	Sample Received By:	Jodi Henson
Project Location:	NASH DRAW, SE CARLSBAD, NM		

Sample ID: SOUTH WALL (H202087-03)

Chloride, SM4500Cl-B			mg/kg		Analyzed By: HM				
Analyte	Result	Reporting Limit	Analyzed	Method Blank	BS	% Recovery	True Value QC	RPD	Qualifier
Chloride	1390	16.0	08/31/2012	ND	400	100	400	3.92	
TPH 8015M			mg/kg		Analyzed By: MS				
Analyte	Result	Reporting Limit	Analyzed	Method Blank	BS	% Recovery	True Value QC	RPD	Qualifier
GRO C6-C10	<10.0	10.0	08/30/2012	ND	199	99.6	200	2.83	
DRO >C10-C28	<10.0	10.0	08/30/2012	ND	198	98.9	200	3.32	
EXT DRO >C28-C35	<10.0	10.0	08/30/2012	ND					
<i>Surrogate: 1-Chlorooctane</i>									
	74.4 %	65.2-140							
<i>Surrogate: 1-Chlorooctadecane</i>									
	90.0 %	63.6-154							

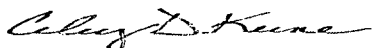
Sample ID: EAST WALL (H202087-04)

Chloride, SM4500Cl-B			mg/kg		Analyzed By: HM				
Analyte	Result	Reporting Limit	Analyzed	Method Blank	BS	% Recovery	True Value QC	RPD	Qualifier
Chloride	2160	16.0	08/31/2012	ND	400	100	400	3.92	
TPH 8015M			mg/kg		Analyzed By: MS				
Analyte	Result	Reporting Limit	Analyzed	Method Blank	BS	% Recovery	True Value QC	RPD	Qualifier
GRO C6-C10	<10.0	10.0	08/30/2012	ND	199	99.6	200	2.83	
DRO >C10-C28	<10.0	10.0	08/30/2012	ND	198	98.9	200	3.32	
EXT DRO >C28-C35	<10.0	10.0	08/30/2012	ND					
<i>Surrogate: 1-Chlorooctane</i>									
	74.4 %	65.2-140							
<i>Surrogate: 1-Chlorooctadecane</i>									
	90.1 %	63.6-154							

Cardinal Laboratories

* = Accredited Analyte

PLEASE NOTE: Liability and Damages. Cardinal's liability and client's exclusive remedy for any claim arising, whether based in contract or tort, shall be limited to the amount paid by client for analyses. All claims, including those for negligence and any other cause whatsoever shall be deemed waived unless made in writing and received by Cardinal within thirty (30) days after completion of the applicable service. In no event shall Cardinal be liable for incidental or consequential damages, including, without limitation, business interruptions, loss of use, or loss of profits incurred by client, its subsidiaries, affiliates or successors arising out of or related to the performance of the services hereunder by Cardinal, regardless of whether such claim is based upon any of the above stated reasons or otherwise. Results relate only to the samples identified above. This report shall not be reproduced except in full with written approval of Cardinal Laboratories.



Celey D. Keene, Lab Director/Quality Manager

Analytical Results For:

 Bass Enterprises
 TONY SAVOIE
 522 W. Mermod #709
 Carlsbad NM, 88220
 Fax To: (505) 887-7473

Received:	08/29/2012	Sampling Date:	08/29/2012
Reported:	08/31/2012	Sampling Type:	Soil
Project Name:	PLU - 205 FLOWLINE	Sampling Condition:	Cool & Intact
Project Number:	NONE GIVEN	Sample Received By:	Jodi Henson
Project Location:	NASH DRAW, SE CARLSBAD, NM		

Sample ID: WEST WALL (H202087-05)

Chloride, SM4500Cl-B			mg/kg		Analyzed By: HM				
Analyte	Result	Reporting Limit	Analyzed	Method Blank	BS	% Recovery	True Value QC	RPD	Qualifier
Chloride	48.0	16.0	08/31/2012	ND	400	100	400	3.92	
TPH 8015M			mg/kg		Analyzed By: MS				
Analyte	Result	Reporting Limit	Analyzed	Method Blank	BS	% Recovery	True Value QC	RPD	Qualifier
GRO C6-C10	<10.0	10.0	08/30/2012	ND	199	99.6	200	2.83	
DRO >C10-C28	<10.0	10.0	08/30/2012	ND	198	98.9	200	3.32	
EXT DRO >C28-C35	<10.0	10.0	08/30/2012	ND					
<i>Surrogate: 1-Chlorooctane</i>									
	76.3 %	65.2-140							
<i>Surrogate: 1-Chlorooctadecane</i>									
	91.7 %	63.6-154							

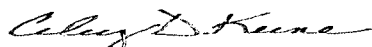
Sample ID: BOTTOM HOLE 24" (H202087-06)

Chloride, SM4500Cl-B			mg/kg		Analyzed By: HM				
Analyte	Result	Reporting Limit	Analyzed	Method Blank	BS	% Recovery	True Value QC	RPD	Qualifier
Chloride	3840	16.0	08/31/2012	ND	400	100	400	3.92	
TPH 8015M			mg/kg		Analyzed By: MS				
Analyte	Result	Reporting Limit	Analyzed	Method Blank	BS	% Recovery	True Value QC	RPD	Qualifier
GRO C6-C10	<10.0	10.0	08/30/2012	ND	199	99.6	200	2.83	
DRO >C10-C28	<10.0	10.0	08/30/2012	ND	198	98.9	200	3.32	
EXT DRO >C28-C35	<10.0	10.0	08/30/2012	ND					
<i>Surrogate: 1-Chlorooctane</i>									
	78.3 %	65.2-140							
<i>Surrogate: 1-Chlorooctadecane</i>									
	92.0 %	63.6-154							

Cardinal Laboratories

* = Accredited Analyte

PLEASE NOTE: Liability and Damages. Cardinal's liability and client's exclusive remedy for any claim arising, whether based in contract or tort, shall be limited to the amount paid by client for analyses. All claims, including those for negligence and any other cause whatsoever shall be deemed waived unless made in writing and received by Cardinal within thirty (30) days after completion of the applicable service. In no event shall Cardinal be liable for incidental or consequential damages, including, without limitation, business interruptions, loss of use, or loss of profits incurred by client, its subsidiaries, affiliates or successors arising out of or related to the performance of the services hereunder by Cardinal, regardless of whether such claim is based upon any of the above stated reasons or otherwise. Results relate only to the samples identified above. This report shall not be reproduced except in full with written approval of Cardinal Laboratories.



Celey D. Keene, Lab Director/Quality Manager

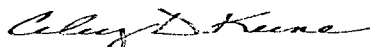
Notes and Definitions

ND	Analyte NOT DETECTED at or above the reporting limit
RPD	Relative Percent Difference
**	Samples not received at proper temperature of 6°C or below.
***	Insufficient time to reach temperature.
-	Chloride by SM4500Cl-B does not require samples be received at or below 6°C Samples reported on an as received basis (wet) unless otherwise noted on report

Cardinal Laboratories

* = Accredited Analyte

PLEASE NOTE: Liability and Damages. Cardinal's liability and client's exclusive remedy for any claim arising, whether based in contract or tort, shall be limited to the amount paid by client for analyses. All claims, including those for negligence and any other cause whatsoever shall be deemed waived unless made in writing and received by Cardinal within thirty (30) days after completion of the applicable service. In no event shall Cardinal be liable for incidental or consequential damages, including, without limitation, business interruptions, loss of use, or loss of profits incurred by client, its subsidiaries, affiliates or successors arising out of or related to the performance of the services hereunder by Cardinal, regardless of whether such claim is based upon any of the above stated reasons or otherwise. Results relate only to the samples identified above. This report shall not be reproduced except in full with written approval of Cardinal Laboratories.



Celey D. Keene, Lab Director/Quality Manager



CHAIN-OF-CUSTODY AND ANALYSIS REQUEST

101 East Mariland, Hobbs, NM 88240
(575) 393-2326 FAX (575) 393-2476

Company Name: <u>BUPCO LP</u> Project Manager: <u>Tony Savio</u> Address: <u>522 W. Mermod Suite 704</u> City: <u>CARLSBAD</u> State: <u>NM</u> Zip: <u>88220</u> Phone #: <u>432-556-8730</u> Fax #: <u>---</u> Project #: <u>---</u> Project Owner: <u>BUPCO</u> Project Name: <u>PLU-205 Flow Line</u> Project Location: <u>SE. CARLSBAD NASH DRAW.</u> Sampler Name: <u>CLAY COX</u>				BILL TO				ANALYSIS REQUEST											
				P.O. #:				<div style="display: flex; justify-content: space-around;"> <div style="writing-mode: vertical-rl; transform: rotate(180deg);">TPH</div> <div style="writing-mode: vertical-rl; transform: rotate(180deg);">Chlorides</div> </div>											
				Company:															
				Attn: <u>SHANE</u>															
				Address:															
				City:															
				State: Zip:															
				Phone #: Fax #:															

FOR LAB USE ONLY		(G)RAB OR (C)OMP. # CONTAINERS	GROUNDWATER	WASTEWATER	MATRIX					PRESERV.	SAMPLING		DATE	TIME	
Lab I.D.	Sample I.D.				SOIL	OIL	SLUDGE	OTHER:	ACID/BASE:		ICE / COOL	OTHER:			
H202087															
1	BOTTOM hole	6			✓					✓			8-29-12		✓
2	NORTH WALL	6			✓					✓			8-29-12		✓
3	SOUTH WALL	6			✓					✓			8-29-12		✓
4	EAST WALL	6			✓					✓			8-29-12		✓
5	WEST WALL	6			✓					✓			8-29-12		✓
6	BOTTOM hole 24"	6			✓					✓			8-29-12		✓

PLEASE NOTE: Liability and Damages. Cardinal's liability and client's exclusive remedy for any claim arising whether based in contract or tort, shall be limited to the amount paid by the client for the analyses. All claims, including those for negligence and any other cause whatsoever shall be deemed waived unless made in writing and received by Cardinal within 30 days after completion of the applicable service. In no event shall Cardinal be liable for incidental or consequential damages, including without limitation, business interruptions, loss of use, or loss of profits incurred by client, its subsidiaries, affiliates or successors arising out of or related to the performance of services hereunder by Cardinal, regardless of whether such claim is based upon any of the above stated reasons or otherwise.

Relinquished By: <u>Clay Cox</u>	Date: <u>8/29/12</u> Time: <u>3:33</u>	Received By: <u>Jodi Jensen</u>	Phone Result: <input type="checkbox"/> Yes <input type="checkbox"/> No Fax Result: <input type="checkbox"/> Yes <input type="checkbox"/> No Add'l Phone #: _____ Add'l Fax #: _____ REMARKS:
Relinquished By:	Date: _____ Time: _____	Received By:	
Delivered By: (Circle One) Sampler - UPS - Bus - Other:	Sample Condition Cool Intact <input checked="" type="checkbox"/> Yes <input type="checkbox"/> No	CHECKED BY: (Initials) <u>JK</u>	

† Cardinal cannot accept verbal changes. Please fax written changes to 505-393-2476