

C-144

**Permanent
Pit**

**Closure Plan
Approval**

District I
1625 N. French Dr., Hobbs, NM 88240
District II
1301 W. Grand Avenue, Artesia, NM 88210
District III
1000 Rio Brazos Road, Aztec, NM 87410
District IV
1220 S. St. Francis Dr., Santa Fe, NM 87505

State of New Mexico
Energy Minerals and Natural Resources
Department
Oil Conservation Division
1220 South St. Francis Dr.
Santa Fe, NM 87505

Form C-144
July 21, 2008

For temporary pits, closed-loop systems, and below-grade tanks, submit to the appropriate NMOCD District Office.
For permanent pits and exceptions submit to the Santa Fe Environmental Bureau office and provide a copy to the appropriate NMOCD District Office.

**Pit, Closed-Loop System, Below-Grade Tank, or
Proposed Alternative Method Permit or Closure Plan Application**

Type of action: ☐ Permit of a pit, closed-loop system, below-grade tank, or proposed alternative method
☐ Closure of a pit, closed-loop system, below-grade tank, or proposed alternative method
☐ Modification to an existing permit
☒ Closure plan only submitted for an existing permitted or non-permitted pit, closed-loop system, below-grade tank, or proposed alternative method

Instructions: Please submit one application (Form C-144) per individual pit, closed-loop system, below-grade tank or alternative request

Please be advised that approval of this request does not relieve the operator of liability should operations result in pollution of surface water, ground water or the environment. Nor does approval relieve the operator of its responsibility to comply with any other applicable governmental authority's rules, regulations or ordinances.

1. Operator: Jay Management Co., LLC OGRID #: 247692
Address: 4801 Woodway Suite 100E Houston, TX 77056
Facility or well name: Satellite 5
API Number: _____ OCD Permit Number: _____
U/L or Qtr/Qtr _____ Section 3 Township 11S Range 33E County: Lea
Center of Proposed Design: Latitude 33.34970N Longitude 103.60605W NAD: X 1927 ☐ 1983
Surface Owner: ☐ Federal ☒ State ☐ Private ☐ Tribal Trust or Indian Allotment

2. ☒ **Pit:** Subsection F or G of 19.15.17.11 NMAC
Temporary: ☐ Drilling ☐ Workover
X Permanent ☐ Emergency ☐ Cavitation ☐ P&A
X Lined ☐ Unlined Liner type: Thickness 40 mil ☐ LLDPE ☒ HDPE ☐ PVC ☐ Other _____
☐ String-Reinforced
Liner Seams: X Welded ☐ Factory ☐ Other _____ Volume: 396 bbl Dimensions: L 120' x W 100' x D 5'

3. ☐ **Closed-loop System:** Subsection H of 19.15.17.11 NMAC
Type of Operation: ☐ P&A ☐ Drilling a new well ☐ Workover or Drilling (Applies to activities which require prior approval of a permit or notice of intent)
☐ Drying Pad ☐ Above Ground Steel Tanks ☐ Haul-off Bins ☐ Other _____
☐ Lined ☐ Unlined Liner type: Thickness _____ mil ☐ LLDPE ☐ HDPE ☐ PVC ☐ Other _____
Liner Seams: ☐ Welded ☐ Factory ☐ Other _____

4. ☐ **Below-grade tank:** Subsection I of 19.15.17.11 NMAC
Volume: _____ bbl Type of fluid: _____
Tank Construction material: _____
☐ Secondary containment with leak detection ☐ Visible sidewalls, liner, 6-inch lift and automatic overflow shut-off
☐ Visible sidewalls and liner ☐ Visible sidewalls only ☐ Other _____
Liner type: Thickness _____ mil ☐ HDPE ☐ PVC ☐ Other _____

5. ☐ **Alternative Method:**
Submittal of an exception request is required. Exceptions must be submitted to the Santa Fe Environmental Bureau office for consideration of approval.

6.

Fencing: Subsection D of 19.15.17.11 NMAC (*Applies to permanent pits, temporary pits, and below-grade tanks*)

☐ Chain link, six feet in height, two strands of barbed wire at top (*Required if located within 1000 feet of a permanent residence, school, hospital, institution or church*)

☒ Four foot height, four strands of barbed wire evenly spaced between one and four feet

☐ Alternate. Please specify _____

7.

Netting: Subsection E of 19.15.17.11 NMAC (*Applies to permanent pits and permanent open top tanks*)

☐ Screen ☒ Netting ☐ Other _____

☐ Monthly inspections (If netting or screening is not physically feasible)

8.

Signs: Subsection C of 19.15.17.11 NMAC

☒ 12"x 24", 2" lettering, providing Operator's name, site location, and emergency telephone numbers

☐ Signed in compliance with 19.15.3.103 NMAC

9.

Administrative Approvals and Exceptions:

Justifications and/or demonstrations of equivalency are required. Please refer to 19.15.17 NMAC for guidance.

Please check a box if one or more of the following is requested, if not leave blank:

☐ Administrative approval(s): Requests must be submitted to the appropriate division district or the Santa Fe Environmental Bureau office for consideration of approval.

☐ Exception(s): Requests must be submitted to the Santa Fe Environmental Bureau office for consideration of approval.

10.

Siting Criteria (regarding permitting): 19.15.17.10 NMAC

Instructions: The applicant must demonstrate compliance for each siting criteria below in the application. Recommendations of acceptable source material are provided below. Requests regarding changes to certain siting criteria may require administrative approval from the appropriate district office or may be considered an exception which must be submitted to the Santa Fe Environmental Bureau office for consideration of approval. Applicant must attach justification for request. Please refer to 19.15.17.10 NMAC for guidance. Siting criteria does not apply to drying pads or above-grade tanks associated with a closed-loop system.

Ground water is less than 50 feet below the bottom of the temporary pit, permanent pit, or below-grade tank.

- NM Office of the State Engineer - iWATERS database search; USGS; Data obtained from nearby wells

☐ Yes ☒ No

Within 300 feet of a continuously flowing watercourse, or 200 feet of any other significant watercourse or lakebed, sinkhole, or playa lake (measured from the ordinary high-water mark).

- Topographic map; Visual inspection (certification) of the proposed site

☐ Yes ☒ No

Within 300 feet from a permanent residence, school, hospital, institution, or church in existence at the time of initial application. (*Applies to temporary, emergency, or cavitation pits and below-grade tanks*)

- Visual inspection (certification) of the proposed site; Aerial photo; Satellite image

☐ Yes ☒ No

☐ NA

Within 1000 feet from a permanent residence, school, hospital, institution, or church in existence at the time of initial application. (*Applies to permanent pits*)

- Visual inspection (certification) of the proposed site; Aerial photo; Satellite image

☐ Yes ☒ No

☐ NA

Within 500 horizontal feet of a private, domestic fresh water well or spring that less than five households use for domestic or stock watering purposes, or within 1000 horizontal feet of any other fresh water well or spring, in existence at the time of initial application.

- NM Office of the State Engineer - iWATERS database search; Visual inspection (certification) of the proposed site

☐ Yes ☒ No

Within incorporated municipal boundaries or within a defined municipal fresh water well field covered under a municipal ordinance adopted pursuant to NMSA 1978, Section 3-27-3, as amended.

- Written confirmation or verification from the municipality; Written approval obtained from the municipality

☐ Yes ☐ No

Within 500 feet of a wetland.

- US Fish and Wildlife Wetland Identification map; Topographic map; Visual inspection (certification) of the proposed site

☐ Yes ☒ No

Within the area overlying a subsurface mine.

- Written confirmation or verification or map from the NM EMNRD-Mining and Mineral Division

☐ Yes ☒ No

Within an unstable area.

- Engineering measures incorporated into the design; NM Bureau of Geology & Mineral Resources; USGS; NM Geological Society; Topographic map

☐ Yes ☒ No

Within a 100-year floodplain.

- FEMA map

☐ Yes ☒ No

11.

Temporary Pits, Emergency Pits, and Below-grade Tanks Permit Application Attachment Checklist: Subsection B of 19.15.17.9 NMAC**Instructions:** Each of the following items must be attached to the application. Please indicate, by a check mark in the box, that the documents are attached.

- ☐ Hydrogeologic Report (Below-grade Tanks) - based upon the requirements of Paragraph (4) of Subsection B of 19.15.17.9 NMAC
☐ Hydrogeologic Data (Temporary and Emergency Pits) - based upon the requirements of Paragraph (2) of Subsection B of 19.15.17.9 NMAC
☐ Siting Criteria Compliance Demonstrations - based upon the appropriate requirements of 19.15.17.10 NMAC
☐ Design Plan - based upon the appropriate requirements of 19.15.17.11 NMAC
☐ Operating and Maintenance Plan - based upon the appropriate requirements of 19.15.17.12 NMAC
☐ Closure Plan (Please complete Boxes 14 through 18, if applicable) - based upon the appropriate requirements of Subsection C of 19.15.17.9 NMAC and 19.15.17.13 NMAC
☐ Previously Approved Design (attach copy of design) API Number: _____ or Permit Number: _____

12.

Closed-loop Systems Permit Application Attachment Checklist: Subsection B of 19.15.17.9 NMAC**Instructions:** Each of the following items must be attached to the application. Please indicate, by a check mark in the box, that the documents are attached.

- ☐ Geologic and Hydrogeologic Data (only for on-site closure) - based upon the requirements of Paragraph (3) of Subsection B of 19.15.17.9
☐ Siting Criteria Compliance Demonstrations (only for on-site closure) - based upon the appropriate requirements of 19.15.17.10 NMAC
☐ Design Plan - based upon the appropriate requirements of 19.15.17.11 NMAC
☐ Operating and Maintenance Plan - based upon the appropriate requirements of 19.15.17.12 NMAC
☐ Closure Plan (Please complete Boxes 14 through 18, if applicable) - based upon the appropriate requirements of Subsection C of 19.15.17.9 NMAC and 19.15.17.13 NMAC
☐ Previously Approved Design (attach copy of design) API Number: _____
☐ Previously Approved Operating and Maintenance Plan API Number: _____ (Applies only to closed-loop system that use above ground steel tanks or haul-off bins and propose to implement waste removal for closure)

13.

Permanent Pits Permit Application Checklist: Subsection B of 19.15.17.9 NMAC**Instructions:** Each of the following items must be attached to the application. Please indicate, by a check mark in the box, that the documents are attached.

- ☐ Hydrogeologic Report - based upon the requirements of Paragraph (1) of Subsection B of 19.15.17.9 NMAC
☐ Siting Criteria Compliance Demonstrations - based upon the appropriate requirements of 19.15.17.10 NMAC
☐ Climatological Factors Assessment
☐ Certified Engineering Design Plans - based upon the appropriate requirements of 19.15.17.11 NMAC
☐ Dike Protection and Structural Integrity Design - based upon the appropriate requirements of 19.15.17.11 NMAC
☐ Leak Detection Design - based upon the appropriate requirements of 19.15.17.11 NMAC
☐ Liner Specifications and Compatibility Assessment - based upon the appropriate requirements of 19.15.17.11 NMAC
☐ Quality Control/Quality Assurance Construction and Installation Plan
☐ Operating and Maintenance Plan - based upon the appropriate requirements of 19.15.17.12 NMAC
☐ Freeboard and Overtopping Prevention Plan - based upon the appropriate requirements of 19.15.17.11 NMAC
☐ Nuisance or Hazardous Odors, including H₂S, Prevention Plan
☐ Emergency Response Plan
☐ Oil Field Waste Stream Characterization
☐ Monitoring and Inspection Plan
☐ Erosion Control Plan
☐ Closure Plan - based upon the appropriate requirements of Subsection C of 19.15.17.9 NMAC and 19.15.17.13 NMAC

14.

Proposed Closure: 19.15.17.13 NMAC**Instructions:** Please complete the applicable boxes, Boxes 14 through 18, in regards to the proposed closure plan.

- Type: ☐ Drilling ☐ Workover ☐ Emergency ☐ Cavitation ☐ P&A ☒ Permanent Pit ☐ Below-grade Tank ☐ Closed-loop System
☐ Alternative
 Proposed Closure Method: ☒ Waste Excavation and Removal
☐ Waste Removal (Closed-loop systems only)
☐ On-site Closure Method (Only for temporary pits and closed-loop systems)
☐ In-place Burial ☐ On-site Trench Burial
☐ Alternative Closure Method (Exceptions must be submitted to the Santa Fe Environmental Bureau for consideration)

15.

Waste Excavation and Removal Closure Plan Checklist: (19.15.17.13 NMAC) **Instructions:** Each of the following items must be attached to the closure plan. Please indicate, by a check mark in the box, that the documents are attached.

- ☒ Protocols and Procedures - based upon the appropriate requirements of 19.15.17.13 NMAC
☒ Confirmation Sampling Plan (if applicable) - based upon the appropriate requirements of Subsection F of 19.15.17.13 NMAC
☐ Disposal Facility Name and Permit Number (for liquids, drilling fluids and drill cuttings)
☒ Soil Backfill and Cover Design Specifications - based upon the appropriate requirements of Subsection H of 19.15.17.13 NMAC
☒ Re-vegetation Plan - based upon the appropriate requirements of Subsection I of 19.15.17.13 NMAC
☒ Site Reclamation Plan - based upon the appropriate requirements of Subsection G of 19.15.17.13 NMAC

46.

Waste Removal Closure For Closed-loop Systems That Utilize Above Ground Steel Tanks or Haul-off Bins Only: (19.15.17.13.D NMAC)**Instructions: Please identify the facility or facilities for the disposal of liquids, drilling fluids and drill cuttings. Use attachment if more than two facilities are required.**

Disposal Facility Name: _____ Disposal Facility Permit Number: _____

Disposal Facility Name: _____ Disposal Facility Permit Number: _____

Will any of the proposed closed-loop system operations and associated activities occur on or in areas that *will not* be used for future service and operations?☐ Yes (If yes, please provide the information below) ☐ No*Required for impacted areas which will not be used for future service and operations:*☐ Soil Backfill and Cover Design Specifications - based upon the appropriate requirements of Subsection H of 19.15.17.13 NMAC☐ Re-vegetation Plan - based upon the appropriate requirements of Subsection I of 19.15.17.13 NMAC☐ Site Reclamation Plan - based upon the appropriate requirements of Subsection G of 19.15.17.13 NMAC

17.

Siting Criteria (regarding on-site closure methods only): 19.15.17.10 NMAC**Instructions: Each siting criteria requires a demonstration of compliance in the closure plan. Recommendations of acceptable source material are provided below. Requests regarding changes to certain siting criteria may require administrative approval from the appropriate district office or may be considered an exception which must be submitted to the Santa Fe Environmental Bureau office for consideration of approval. Justifications and/or demonstrations of equivalency are required. Please refer to 19.15.17.10 NMAC for guidance.**

Ground water is less than 50 feet below the bottom of the buried waste.

- NM Office of the State Engineer - iWATERS database search; USGS; Data obtained from nearby wells

☐ Yes ☐ No
☐ NA

Ground water is between 50 and 100 feet below the bottom of the buried waste

- NM Office of the State Engineer - iWATERS database search; USGS; Data obtained from nearby wells

☐ Yes ☐ No
☐ NA

Ground water is more than 100 feet below the bottom of the buried waste.

- NM Office of the State Engineer - iWATERS database search; USGS; Data obtained from nearby wells

☐ Yes ☐ No
☐ NA

Within 300 feet of a continuously flowing watercourse, or 200 feet of any other significant watercourse or lakebed, sinkhole, or playa lake (measured from the ordinary high-water mark).

- Topographic map; Visual inspection (certification) of the proposed site

☐ Yes ☐ No

Within 300 feet from a permanent residence, school, hospital, institution, or church in existence at the time of initial application.

- Visual inspection (certification) of the proposed site; Aerial photo; Satellite image

☐ Yes ☐ No

Within 500 horizontal feet of a private, domestic fresh water well or spring that less than five households use for domestic or stock watering purposes, or within 1000 horizontal feet of any other fresh water well or spring, in existence at the time of initial application.

- NM Office of the State Engineer - iWATERS database; Visual inspection (certification) of the proposed site

☐ Yes ☐ No

Within incorporated municipal boundaries or within a defined municipal fresh water well field covered under a municipal ordinance adopted pursuant to NMSA 1978, Section 3-27-3, as amended.

- Written confirmation or verification from the municipality; Written approval obtained from the municipality

☐ Yes ☐ No

Within 500 feet of a wetland.

- US Fish and Wildlife Wetland Identification map; Topographic map; Visual inspection (certification) of the proposed site

☐ Yes ☐ No

Within the area overlying a subsurface mine.

- Written confirmation or verification or map from the NM EMNRD-Mining and Mineral Division

☐ Yes ☐ No

Within an unstable area.

- Engineering measures incorporated into the design; NM Bureau of Geology & Mineral Resources; USGS; NM Geological Society; Topographic map

☐ Yes ☐ No

Within a 100-year floodplain.

- FEMA map

☐ Yes ☐ No

18.

On-Site Closure Plan Checklist: (19.15.17.13 NMAC) Instructions: Each of the following items must be attached to the closure plan. Please indicate, by a check mark in the box, that the documents are attached.☐ Siting Criteria Compliance Demonstrations - based upon the appropriate requirements of 19.15.17.10 NMAC☐ Proof of Surface Owner Notice - based upon the appropriate requirements of Subsection F of 19.15.17.13 NMAC☐ Construction/Design Plan of Burial Trench (if applicable) based upon the appropriate requirements of 19.15.17.11 NMAC☐ Construction/Design Plan of Temporary Pit (for in-place burial of a drying pad) - based upon the appropriate requirements of 19.15.17.11 NMAC☐ Protocols and Procedures - based upon the appropriate requirements of 19.15.17.13 NMAC☐ Confirmation Sampling Plan (if applicable) - based upon the appropriate requirements of Subsection F of 19.15.17.13 NMAC☐ Waste Material Sampling Plan - based upon the appropriate requirements of Subsection F of 19.15.17.13 NMAC☐ Disposal Facility Name and Permit Number (for liquids, drilling fluids and drill cuttings or in case on-site closure standards cannot be achieved)☐ Soil Cover Design - based upon the appropriate requirements of Subsection H of 19.15.17.13 NMAC☐ Re-vegetation Plan - based upon the appropriate requirements of Subsection I of 19.15.17.13 NMAC☐ Site Reclamation Plan - based upon the appropriate requirements of Subsection G of 19.15.17.13 NMAC

Operator Application Certification:

I hereby certify that the information submitted with this application is true, accurate and complete to the best of my knowledge and belief.

Name (Print): KIRK BROUSSARD Title: OPERATIONS ENGINEER
 Signature: [Signature] Date: 9-28-09
 e-mail address: KIRKB@ISRAMCO-JAY.COM Telephone: 28-456-7892 Ext 302

OCD Approval: ☐ Permit Application (including closure plan) ☒ Closure Plan (only) ☐ OCD Conditions (see attachment)

OCD Representative Signature: [Signature] Approval Date: 10/28/09

Title: Environmental Engineer OCD Permit Number: _____

Closure Report (required within 60 days of closure completion): Subsection K of 19.15.17.13 NMAC

Instructions: Operators are required to obtain an approved closure plan prior to implementing any closure activities and submitting the closure report. The closure report is required to be submitted to the division within 60 days of the completion of the closure activities. Please do not complete this section of the form until an approved closure plan has been obtained and the closure activities have been completed.

☐ Closure Completion Date: _____

Closure Method:

☐ Waste Excavation and Removal ☐ On-Site Closure Method ☐ Alternative Closure Method ☐ Waste Removal (Closed-loop systems only)
☐ If different from approved plan, please explain.

Closure Report Regarding Waste Removal Closure For Closed-loop Systems That Utilize Above Ground Steel Tanks or Haul-off Bins Only:

Instructions: Please identify the facility or facilities for where the liquids, drilling fluids and drill cuttings were disposed. Use attachment if more than two facilities were utilized.

Disposal Facility Name: _____ Disposal Facility Permit Number: _____

Disposal Facility Name: _____ Disposal Facility Permit Number: _____

Were the closed-loop system operations and associated activities performed on or in areas that *will not* be used for future service and operations?

☐ Yes (If yes, please demonstrate compliance to the items below) ☐ No

Required for impacted areas which will not be used for future service and operations:

- ☐ Site Reclamation (Photo Documentation)
☐ Soil Backfilling and Cover Installation
☐ Re-vegetation Application Rates and Seeding Technique

Closure Report Attachment Checklist: *Instructions: Each of the following items must be attached to the closure report. Please indicate, by a check mark in the box, that the documents are attached.*

- ☐ Proof of Closure Notice (surface owner and division)
☐ Proof of Deed Notice (required for on-site closure)
☐ Plot Plan (for on-site closures and temporary pits)
☐ Confirmation Sampling Analytical Results (if applicable)
☐ Waste Material Sampling Analytical Results (required for on-site closure)
☐ Disposal Facility Name and Permit Number
☐ Soil Backfilling and Cover Installation
☐ Re-vegetation Application Rates and Seeding Technique
☐ Site Reclamation (Photo Documentation)

On-site Closure Location: Latitude _____ Longitude _____ NAD: ☐ 1927 ☐ 1983

Operator Closure Certification:

I hereby certify that the information and attachments submitted with this closure report is true, accurate and complete to the best of my knowledge and belief. I also certify that the closure complies with all applicable closure requirements and conditions specified in the approved closure plan.

Name (Print): _____ Title: _____

Signature: _____ Date: _____

e-mail address: _____ Telephone: _____



**Pit Closure Protocol
Jay Management Company
Satellite 5**

1.0 Purpose

This protocol is to provide a detailed outline of the steps to be employed in the closure of an emergency brine disposal pit near Tatum, New Mexico.

2.0 Scope

This protocol is site specific for the Satellite 5 Closure Project. The site is presently protected by an intact 40 mil HDPE liner and does not appear to pose an imminent danger to fresh water, public health or the environment.

3.0 Schedule

Final closure of the site must be completed by December 31, 2009 in accordance with ASO-010-A.

4.0 Safety

4.1 Prior to work on the site, Jay Management shall obtain the location and phone numbers of the nearest emergency medical treatment facility. Jay Management will review all safety related issues with the appropriate personnel, sub-contractors and exchange phone numbers.

4.2 A tailgate safety meeting shall be held and documented each day. All sub-contractors must attend and sign the daily log-in sheet.

4.3 Anyone allowed on to location must be wearing sleeved shirts, steel toed boots, and long pants. Each vehicle must be equipped with two way communication capabilities.

4.4 Prior to any excavation, the area shall be surveyed with a line finder. If lines are discovered within the area to be excavated they shall be marked with pin flags on either side of the line at maximum five foot intervals.

5.0 Closure Procedure

- 5.1 Jay Management will notify the surface owner by certified mail, return receipt requested, that they plan to close the permanent pit. Evidence of the mailing of the notice to the surface owner shown in the county tax records shall be sufficient to demonstrate compliance with this requirement.
- 5.2 Jay Management shall additionally notify the NMOCD Environmental Bureau in the division's Santa Fe Office at least sixty days in advance of the proposed schedule for closure. The notification will include a proposed schedule of activities.
- 5.3 There are presently no fluids within the impoundment. Any fluids within the permanent pit will be at the time of closure will be rain water which will be pumped into the adjacent storage tank for processing through the existing system consisting of separators and a licensed saltwater disposal well.
- 5.4 The plastic liner and all solid contaminants contained within will be tested for the presence of NORM (naturally occurring radioactive materials) in accordance with 20 NMAC 3.1, subpart 14. If acceptable concentrations are found, the liner and soils shall be excavated and transported to the Gandy-Marley landfill (permit no. NM 1-0019) located near Caprock, New Mexico.
- 5.5 Netting, fencing, pipes or other ancillary equipment will be removed and used at other locations.
- 5.6 Jay Management will test the soils beneath the permanent pit to determine whether a release has occurred. Jay management will collect, at a minimum, a five point, composite sample; collect individual grab samples from any area that is wet, discolored or showing other evidence of a release; and analyze for BTEX, TPH and chlorides to demonstrate that the benzene concentration, as determined by EPA SW-846 methods 8021B or 8260B or other EPA method that the division approves, does not exceed 0.2 mg/kg; total BTEX concentration, as determined by EPA SW-846 methods 8021B or 8260B or other EPA method that the division approves, does not exceed 50 mg/kg; the TPH concentration, as determined by EPA method 418.1 or other EPA method that the division approves, does not exceed 100 mg/kg; and the chloride concentration, as determined by EPA method 300.1 or other EPA method that the division approves, does not exceed 250 mg/kg, or the background concentration, whichever is greater. Jay Management shall notify the division of its results on form C-141. Jay

Management recognize that the division may require additional delineation upon review of the results.

- 5.7 If Jay Management or the division determines that a release has occurred, Jay Management will comply with 19.15.29 NMAC and 19.15.30 NMAC, as appropriate.
- 5.8 If the sampling program demonstrates that a release has not occurred or that any release does not exceed the concentrations specified in paragraph 5.6 of this procedure, Jay Management will backfill the excavation with compacted, non-waste containing, earthen material, construct a division-prescribed soil cover; re-contour the location to match existing elevations and re-vegetate the site in accordance with paragraph 5.9 of this procedure.
- 5.9 Jay Management will substantially restore the impacted surface area to the condition that existed prior to oil and gas operations by placement of the soil cover as provided in Subsection H of 19.15.17.13 NMAC, re-contour the location and associated areas to a contour that approximates the original contour and blends with the surrounding topography and re-vegetate according to Subsection I of 19.15.17.13 NMAC.
- 5.10 The soil cover for closures shall consist of the background thickness of topsoil or one foot of suitable material to establish vegetation at the site, whichever is greater. Jay Management will construct the soil cover to the site's existing grade and prevent ponding of water and erosion of the cover material.
- 5.11 Jay Management will seed by drilling on the contour whenever practical or by other division-approved methods. Jay Management will obtain vegetative cover that equals 70% of the native perennial vegetative cover (un-impacted by overgrazing, fire or other intrusion damaging to native vegetation) consisting of at least three native plant species, including at least one grass, but not including noxious weeds, and maintain that cover through two successive growing seasons. During the two growing seasons that prove viability, there shall be no artificial irrigation of the vegetation.

Jay Management will repeat seeding or planting until it successfully achieves the required vegetative cover. If conditions are not favorable for the establishment of vegetation, such as periods of drought, the division may allow Jay Management to delay seeding or planting until soil moisture conditions become favorable or may require Jay Management to use additional cultural techniques such as mulching, fertilizing, irrigating,

fencing or other practices. The request must be made by Jay Management and approved by the NMOCD Environmental Bureau.

Jay Management will notify the division when it has seeded or planted and when it successfully achieves re-vegetation.

6.0 Closure Report

At the conclusion of the project, Jay Management shall submit a closure report within 60 days of closure which contains the following minimum information:

- Photographs of the location prior to closure
- Photographs of the excavation at maximum size
- Photographs of the location at time of final closure
- NORM survey report
- Confirmation sampling analytical results
- Manifests of all materials sent to commercial disposal to include permit number
- Soil backfilling and cover installation
- Re-vegetation application rates and seeding techniques
- Proof of closure notice to the division and surface owner



New Mexico Office of the State Engineer

Water Column/Average Depth to Water

(quarters are 1=NW 2=NE 3=SW 4=SE)

(quarters are smallest to largest) (NAD83 UTM in meters)

(In feet)

POD Number	Sub basin	Use	County	Q 64	Q 16	Q 4	Sec	Tws	Rng	X	Y	Depth Well	Depth Water	Water Column	
L 03470		PRO	LE	1	4	1	10	11S	33E	629731	3694624*	116	54	62	
L 03470 APPRO		PRO	LE	1	4	1	10	11S	33E	629731	3694624*	116	54	62	
L 03483		DOM	LE	1	4	1	10	11S	33E	629731	3694624*	140	80	60	
L 03483 APPRO		DOM	LE	1	4	1	10	11S	33E	629731	3694624*	140	80	60	
L 05393		PRO	LE		2	4	09	11S	33E	629032	3694113*	105	70	35	
L 05493		PRO	LE		2	2	09	11S	33E	629020	3694918*	160	45	115	
L 06139		PRO	LE			3	09	11S	33E	628031	3693899*	80	40	40	
L 06235		PRO	LE		3	3	09	11S	33E	627830	3693698*	90	50	40	
L 06242		PRO	LE		3	3	3	09	11S	33E	627729	3693597*	100	60	40
L 06860		STK	LE		2	2	4	09	11S	33E	629131	3694212*	85	49	36
L 10225		PRO	LE		3	1	3	09	11S	33E	627723	3693999*	115	45	70

Average Depth to Water: **57 feet**

Minimum Depth: **40 feet**

Maximum Depth: **80 feet**

Record Count: 11

Basin/County Search:

Basin: Lea County

County: Lea

PLSS Search:

Section(s): 2, 3, 4, 9, 10, 11 Township: 11S

Range: 33E

*UTM location was derived from PLSS - see Help

The data is furnished by the NMOSE/ISC and is accepted by the recipient with the expressed understanding that the OSE/ISC make no warranties, expressed or implied, concerning the accuracy, completeness, reliability, usability, or suitability for any particular purpose of the data.

New Mexico Office of the State Engineer
POD Reports and Downloads

Township: Range: Sections: NAD27 X: Y: Zone: Search Radius: County: Basin: Number: Suffix: Owner Name: (First) (Last) ☐ Non-Domestic ☐ Domestic ☒ All

WATER COLUMN REPORT 04/11/2009

(quarters are 1=NW 2=NE 3=SW 4=SE)
(quarters are biggest to smallest)

POD Number	Tws	Rng	Sec	q	q	q	Zone	X	Y	Depth Well	Depth Water	Water (in feet) Column
------------	-----	-----	-----	---	---	---	------	---	---	---------------	----------------	---------------------------

No Records found, try again



New Mexico Office of the State Engineer **Water Column/Average Depth to Water**

No records found.

Basin/County Search:

Basin: Lea County ✓

County: Lea

PLSS Search:

Section(s): 31, 32,

Township: 10S

Range: 33E

The data is furnished by the NMOSE/ISC and is accepted by the recipient with the expressed understanding that the OSE/ISC make no warranties, expressed or implied, concerning the accuracy, completeness, reliability, usability, or suitability for any particular purpose of the data.



New Mexico Office of the State Engineer **Water Column/Average Depth to Water**

No records found.

Basin/County Search:

Basin: Lea County

County: Lea

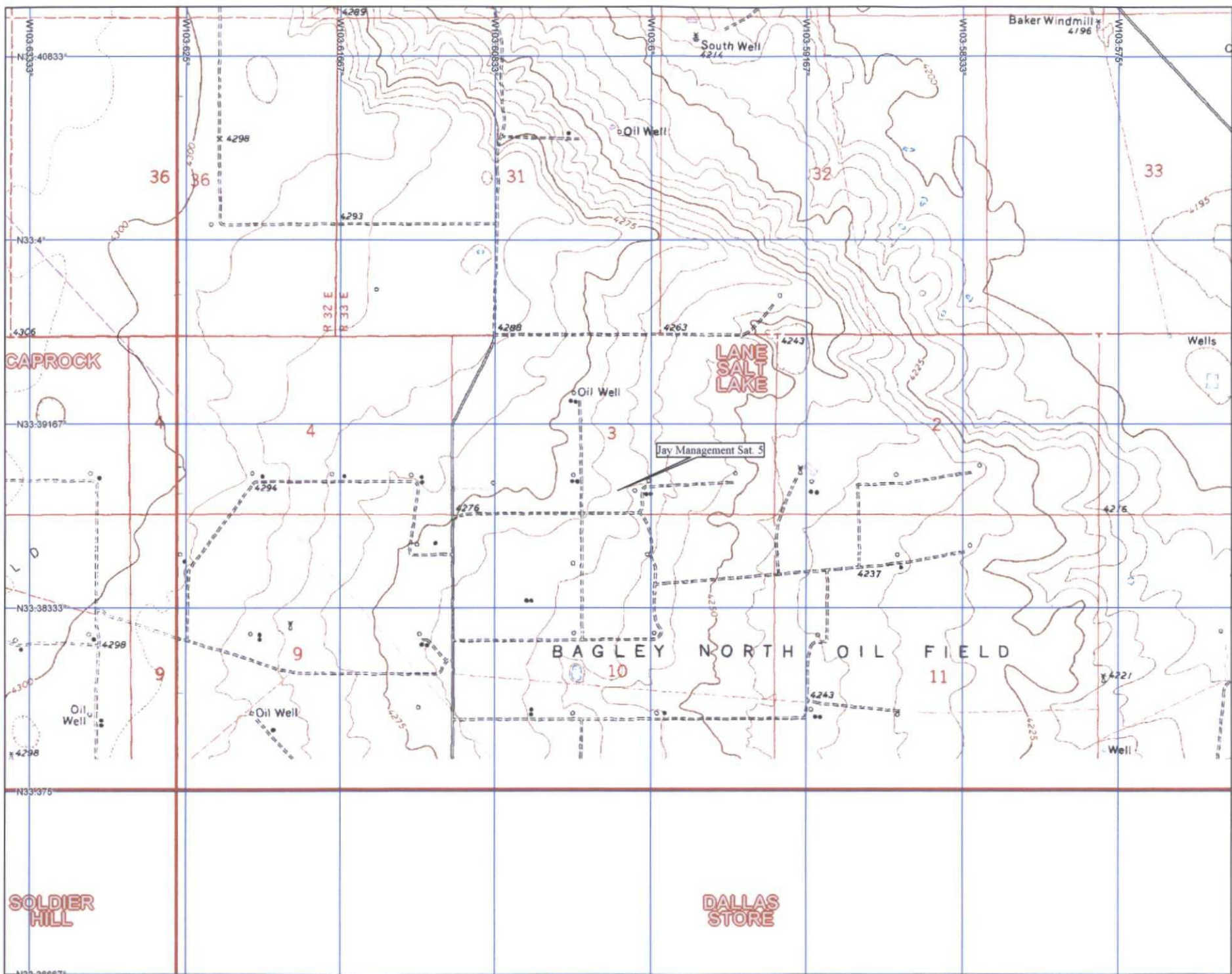
PLSS Search:

Section(s): 36

Township: 10S

Range: 32E

The data is furnished by the NMOSE/ISC and is accepted by the recipient with the expressed understanding that the OSE/ISC make no warranties, expressed or implied, concerning the accuracy, completeness, reliability, usability, or suitability for any particular purpose of the data.



Isramco Sat. 5

©2009 Google

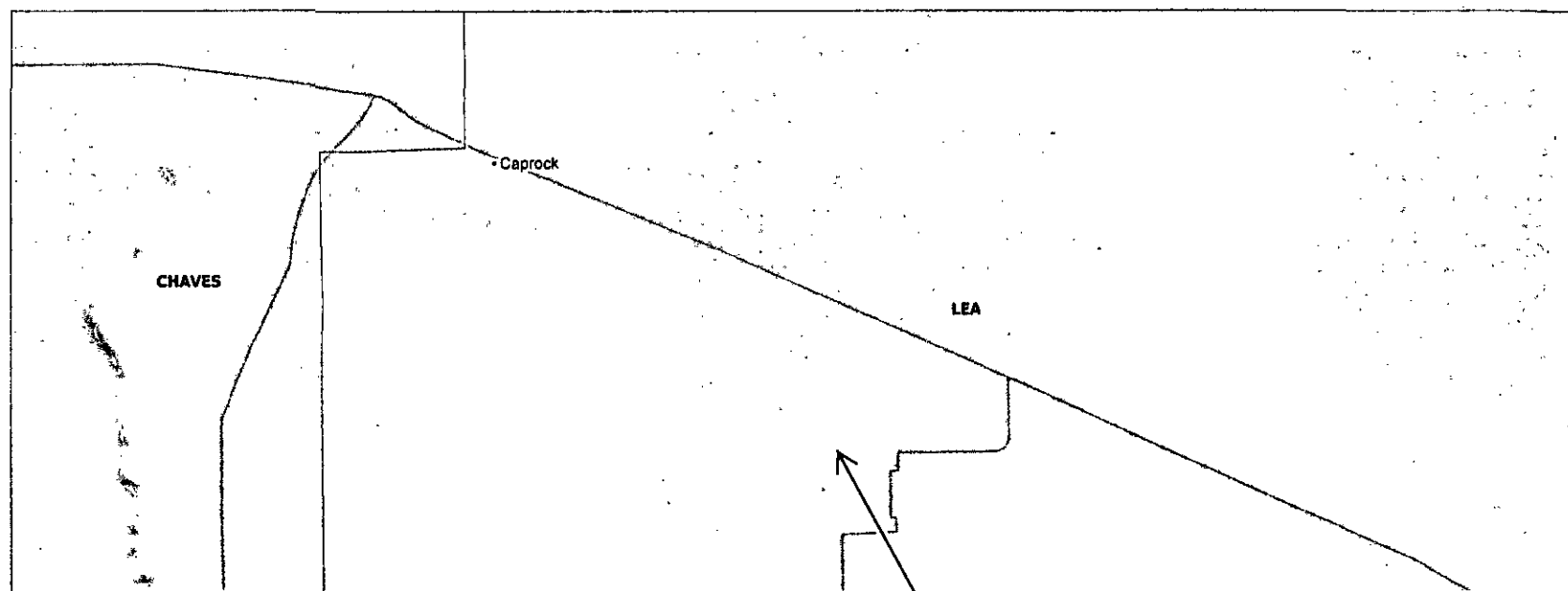
947 ft
Imagery Dates: Jun 25, 2005 - Dec 3, 2005

© 2009 Tele Atlas
Image © 2009 DigitalGlobe
lat 33.388590° lon -103.601770° elev 4269 ft

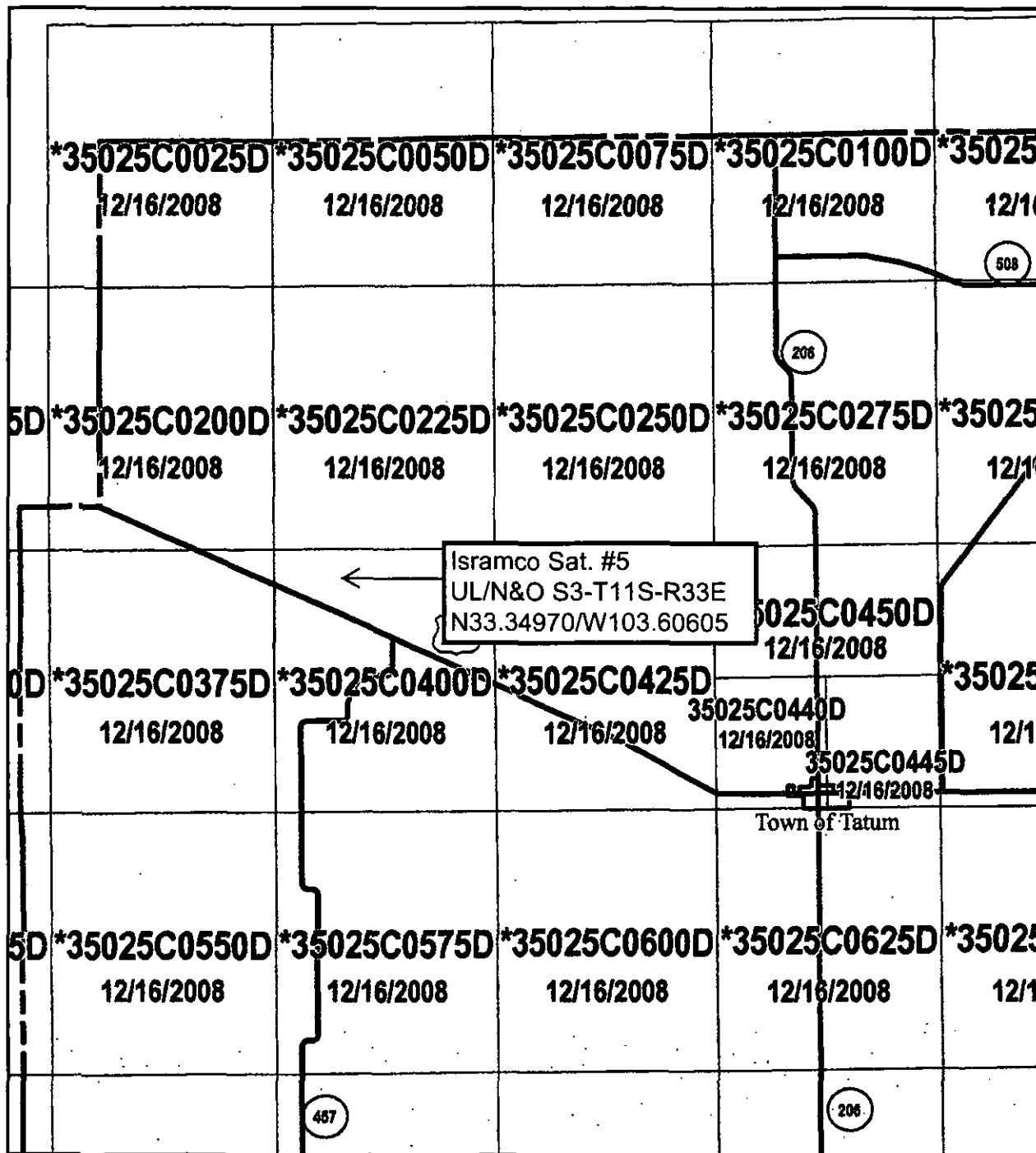
Eye alt 7550 ft



MMQonline Public Version



ISRAMCO
BURRO P/L SAT#5
UL/N&O S3-T11S-R33E
N33.34970/W103.60605



NFIP
NATIONAL FLOOD INSURANCE PROGRAM

MAP INDEX

FIRM

FLOOD INSURANCE RATE MAP

LEA COUNTY,
NEW MEXICO

AND INCORPORATED AREAS

MAP INDEX

PANELS PRINTED: 440, 445, 955,
965, 1165, 1170, 1200, 1335, 1345, 1355,
1365, 1670, 2102



MAP NUMBER
35025CIND0A

EFFECTIVE DATE
DECEMBER 16, 2008

Federal Emergency Management Agency

This is an official copy of a portion of the above referenced flood map. It was extracted using F-MIT On-Line. This map does not reflect changes or amendments which may have been made subsequent to the date on the title block. For the latest product information about National Flood Insurance Program flood maps check the FEMA Flood Map Store at www.msc.fema.gov



Whole Earth Environmental, Inc.

2103 Arbor Cove
Katy, Tx. 77494
281.394.2050
whearth@msn.com

RECEIVED OCD
2009 SEP 29 A 11:21

September 28, 2009

NMOCD
1220 South St. Francis Dr.
Santa Fe, NM 87505

Ref: ASO-010-A

Attn: Brad Jones

Dear Mr. Jones:

This is to serve as notification of our intent to close four permanent pits in Lea County in behalf of Jay Management Co., LLC in accordance with protocols PR-119 through PR-122 (attached).

Jay Management plans to schedule the excavation and removal of all pit contents as soon as we receive approval from the NMOCD and NMSLO. Hopefully, Whole Earth Environmental will receive such approval by October 2nd. If such approval is received, we plan to conduct the remediation activities in accordance with the attached schedule.

Whole Earth will communicate with the Hobbs district office advising them at least forty-eight hours in advance of the beginning of any field activity and will similarly provide a forty-eight hour notification of any testing being conducted at the sites.

Warmest personal regards,

Mike Griffin
President
Whole Earth Environmental, Inc.

October 2009

October 2009						
Su	Mo	Tu	We	Th	Fr	Sa
4	5	6	7	8	9	10
11	12	13	14	15	16	17
18	19	20	21	22	23	24
25	26	27	28	29	30	31

November 2009						
Su	Mo	Tu	We	Th	Fr	Sa
1	2	3	4	5	6	7
8	9	10	11	12	13	14
15	16	17	18	19	20	21
22	23	24	25	26	27	28
29	30					

	Sunday	Monday	Tuesday	Wednesday	Thursday	Friday	Saturday
Sep 27 - Oct 3	Sep 27	28	29	30	Oct 1	2	3
Oct 4 - 10	4	5	6	7	8	9	10
Oct 11 - 17	11	12	13	14	15	16	17
		Excavation of Satellites 2 & 3					
Oct 18 - 24	18	19	20	21	22	23	24
		Soil Testing of Satellites 2 & 3 / Begin excavation of Satellite 1					
Oct 25 - 31	25	26	27	28	29	30	31
		Begin Excavation of Satellite 5 / Soil Testing of Satellite 1					

November 2009

November 2009						
Su	Mo	Tu	We	Th	Fr	Sa
1	2	3	4	5	6	7
8	9	10	11	12	13	14
15	16	17	18	19	20	21
22	23	24	25	26	27	28
29	30					

December 2009						
Su	Mo	Tu	We	Th	Fr	Sa
		1	2	3	4	5
6	7	8	9	10	11	12
13	14	15	16	17	18	19
20	21	22	23	24	25	26
27	28	29	30	31		

	Sunday	Monday	Tuesday	Wednesday	Thursday	Friday	Saturday
Nov 1 - 7	Nov 1	2	3	4	5	6	7
		Soil Testing of Satellite 5 / Begin final contouring of Sats. 1, 2 & 3					
Nov 8 - 14	8	9	10	11	12	13	14
		Final Contouring of Satellite 5					
Nov 15 - 21	15	16	17	18	19	20	21
Nov 22 - 28	22	23	24	25	26	27	28
Nov 29 - Dec 5	29	30	Dec 1	2	3	4	5

Jones, Brad A., EMNRD

From: Mike Griffin [Mikeg@vadose.us]
Sent: Wednesday, September 30, 2009 9:28 AM
To: Jones, Brad A., EMNRD
Cc: Roy Rascon ; Elliot Werner; Chris Griffin
Subject: Jay Management / Isramco Clarifications

Good Morning, Brad:

All four facilities, (Satellites 1, 2, 3 and 5) are classified as transfer stations leading to a single disposal well named the State OG-SWD 002, API No. 30-025-31381 situated at Unit L, Section 9, Township 11S, Range 33E. Jay Management's OGRD number is 247692.

I will have the specific water depths from the individual wells from the State Engineer's office for Satellites 2, 3 and 5 early this afternoon.

Thank you again for your assistance in getting the pit remediation protocols through the system.

Mike Griffin

President
Whole Earth Environmental
Office: (281) 394-2050
Cell : (713) 376-2790
Fax: (281) 393-2051

This inbound email has been scanned for malicious software and transmitted safely to you using Webroot Email Security.
