

ABOVE THIS LINE FOR DIVISION USE ONLY

NEW MEXICO OIL CONSERVATION DIVISION
- Engineering Bureau -
 1220 South St. Francis Drive, Santa Fe, NM 87505



ADMINISTRATIVE APPLICATION CHECKLIST

THIS CHECKLIST IS MANDATORY FOR ALL ADMINISTRATIVE APPLICATIONS FOR EXCEPTIONS TO DIVISION RULES AND REGULATIONS WHICH REQUIRE PROCESSING AT THE DIVISION LEVEL IN SANTA FE

Application Acronyms:

[NSL-Non-Standard Location] [NSP-Non-Standard Proration Unit] [SD-Simultaneous Dedication]
 [DHC-Downhole Commingling] [CTB-Lease Commingling] [PLC-Pool/Lease Commingling]
 [PC-Pool Commingling] [OLS - Off-Lease Storage] [OLM-Off-Lease Measurement]
 [WFX-Waterflood Expansion] [PMX-Pressure Maintenance Expansion]
 [SWD-Salt Water Disposal] [IPI-Injection Pressure Increase]
 [EOR-Qualified Enhanced Oil Recovery Certification] [PPR-Positive Production Response]

- [1] **TYPE OF APPLICATION** - Check Those Which Apply for [A]
 [A] Location - Spacing Unit - Simultaneous Dedication
☐ NSL ☐ NSP ☐ SD
 Check One Only for [B] or [C]
 [B] Commingling - Storage - Measurement
☒ DHC ☐ CTB ☐ PLC ☐ PC ☐ OLS ☐ OLM
 [C] Injection - Disposal - Pressure Increase - Enhanced Oil Recovery
☐ WFX ☐ PMX ☐ SWD ☐ IPI ☐ EOR ☐ PPR
 [D] Other: Specify _____

-DHC 4726
 - BOPC OSLP
 260737
 W 211
 - James Ranch Unit
 145H
 30-015-42324

- [2] **NOTIFICATION REQUIRED TO:** - Check Those Which Apply, or ☐ Does Not Apply
 [A] ☐ Working, Royalty or Overriding Royalty Interest Owners
 [B] ☐ Offset Operators, Leaseholders or Surface Owner
 [C] ☐ Application is One Which Requires Published Legal Notice
 [D] ☒ Notification and/or Concurrent Approval by **BLM** or **SLO**
U.S. Bureau of Land Management - Commissioner of Public Lands, State Land Office
 [E] ☒ For all of the above, Proof of Notification or Publication is Attached, and/or,
 [F] ☐ Waivers are Attached

RECEIVED OGD
 2014 DEC - 2 P 3:03

Pool
 - Los Medanos;
 Bone Springs;
 40295
 - LOS Medanos,
 WOLF Camps
 96336

- [3] **SUBMIT ACCURATE AND COMPLETE INFORMATION REQUIRED TO PROCESS THE TYPE OF APPLICATION INDICATED ABOVE.**

- [4] **CERTIFICATION:** I hereby certify that the information submitted with this application for administrative approval is **accurate** and **complete** to the best of my knowledge. I also understand that **no action** will be taken on this application until the required information and notifications are submitted to the Division.

Note: Statement must be completed by an individual with managerial and/or supervisory capacity.

Tracie J Cherry
 Print or Type Name

Signature

Sr. Regulatory Analyst
 Title

11/25/14
 Date

tjcherry@basspet.com
 e-mail Address

BOPCO, L.P.

P.O. Box 2760
Midland, Tx 79702
(432) 683-2277
(432) 687-0329 (fax)

RECEIVED OCD

2014 DEC -2 P 3: 03

November 30, 2012

Richard Ezeanyim
New Mexico Oil Conservation Division
1220 S. St. Francis Dr.
Santa Fe, NM 87505

Re: James Ranch Unit, Well #195H
C107A – Los Medanos; Bone Spring & Los Medanos; Wolfcamp, S.
30-015-42324
Eddy County, NM

Mr. Ezeanyim:

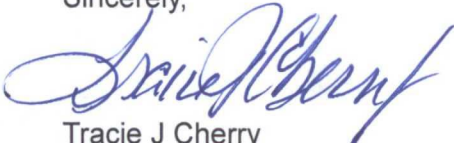
Enclosed is an original Form C107A (Application for Downhole Commingling) for the referenced well. This well was recently drilled and both zones completed; the zones were not tested individually. Data to support the production allocation for each zone is included in this application.

These pools are included in Order R-10558 allowing commingling on an area-wide basis. The surface location and the top of the producing interval for both zones are in Section 36. Downhole commingling of the referenced pools has previously been approved by NMOCD and BLM in James Ranch Unit Wells with no objection or reservoir damage.

BOPCO has applied to the Bureau of Land Management (BLM) for like approval as this well is in a Federal Unit and includes Federal acreage. Form 3160-5 (Sundry Notice and Reports on Wells) has been submitted to the BLM via their Electronic Well Information System on this date. A copy of this application is also being submitted to the New Mexico State Land Office via certified mail.

If you have any questions or need additional information, please call me at 432/683-2277.

Sincerely,



Tracie J Cherry
Sr. Regulatory Analyst

Enclosures

District I
1625 N. French Drive, Hobbs, NM 88240

District II
811 S. First St., Artesia, NM 88210

District III
1000 Rio Brazos Road, Aztec, NM 87410

District IV
1220 S. St. Francis Dr., Santa Fe, NM 87505

State of New Mexico
Energy, Minerals and Natural Resources Department

Oil Conservation Division
1220 South St. Francis Dr.
Santa Fe, New Mexico 87505

Form C-107A
Revised August 1, 2011

APPLICATION TYPE
☒ Single Well
☐ Establish Pre-Approved Pools
EXISTING WELLBORE
☒ Yes ☐ No

APPLICATION FOR DOWNHOLE COMMINGLING

BOPCO, LP PO Box 2760, Midland, TX 79702
Operator Address
James Ranch Unit 195H SHL: UL P Sec 36 T22S-R30E Eddy, NM
Lease Well No. Unit Letter-Section-Township-Range County
OGRID No. 260737 Property Code API No. 30-015-42324 Lease Type: ☒ Federal ☒ State ☐ Fee

DATA ELEMENT	UPPER ZONE	INTERMEDIATE ZONE	LOWER ZONE
Pool Name	Los Medanos; Bone Spring		Los Medanos; Wolfcamp, S.
Pool Code	40295		96336
Top and Bottom of Pay Section (Perforated or Open-Hole Interval)	Top: 10,903 MD Bottom: 11,131 MD		Top: 11,131 MD Bottom: 11,140 MD
Method of Production (Flowing or Artificial Lift)	ESP		ESP
Bottomhole Pressure (Note: Pressure data will not be required if the bottom perforation in the lower zone is within 150% of the depth of the top perforation in the upper zone)	4706		4798
Oil Gravity or Gas BTU (Degree API or Gas BTU)	Gravity: 45.8* BTU: 1303		Gravity: 46.2* BTU: 1390
Producing, Shut-In or New Zone	Producing		Producing
Date and Oil/Gas/Water Rates of Last Production. (Note: For new zones with no production history, applicant shall be required to attach production estimates and supporting data.)	Date: Rates:	Date: Rates:	Zones were not tested separately. This is a combined rate Date: 11/23/2014 Rates: 332 BOPD 826 MCFD 233 BWPD
Fixed Allocation Percentage (Note: If allocation is based upon something other than current or past production, supporting data or explanation will be required.)	Oil Gas 5.4 % 5.4 %	Oil Gas % %	Oil Gas 94.6 % 94.6 %

*Gravity/BTU are taken from offset well samples

ADDITIONAL DATA

Are all working, royalty and overriding royalty interests identical in all commingled zones? Yes ☐ No ☒
If not, have all working, royalty and overriding royalty interest owners been notified by certified mail? Yes ☒ No ☐
Are all produced fluids from all commingled zones compatible with each other? Yes ☒ No ☐
Will commingling decrease the value of production? Yes ☐ No ☒
If this well is on, or communitized with, state or federal lands, has either the Commissioner of Public Lands
or the United States Bureau of Land Management been notified in writing of this application? Yes ☒ No ☐
NMOCD Reference Case No. applicable to this well: R-10558

Attachments:

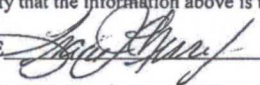
C-102 for each zone to be commingled showing its spacing unit and acreage dedication.
Production curve for each zone for at least one year. (If not available, attach explanation.)
For zones with no production history, estimated production rates and supporting data.
Data to support allocation method or formula.
Notification list of working, royalty and overriding royalty interests for uncommon interest cases.
Any additional statements, data or documents required to support commingling.

PRE-APPROVED POOLS

If application is to establish Pre-Approved Pools, the following additional information will be required:

List of other orders approving downhole commingling within the proposed Pre-Approved Pools
List of all operators within the proposed Pre-Approved Pools
Proof that all operators within the proposed Pre-Approved Pools were provided notice of this application.
Bottomhole pressure data.

I hereby certify that the information above is true and complete to the best of my knowledge and belief.

SIGNATURE  TITLE Sr. Regulatory Analyst DATE 11/20/14
TYPE OR PRINT NAME Tracie J Cherry TELEPHONE NO. (432) 683-2277
E-MAIL ADDRESS tjcherry@basspet.com

BOPCO, LP
James Ranch Unit, Well 195H
30-015-42324
SHL: 36-T22S-R30E
BHL: 35 T22S-R30E
Eddy County, NM

Allocation to be based on chemical tracers placed during hydraulic fracturing.

Unique chemical tracers in were placed in each stage to assess the contribution of those stages along the horizontal wellbore. Results are available through 10/24/14 and include data prior to and after putting the well on submersible pump. The well is currently stabilized and is on submersible pump.

Proposed allocation percentages:

<u>Stage</u>	<u>Zone</u>	<u>%</u>
1-12	Wolfcamp	94.6
13-14	Bone Spring	5.4

Background:

The BOPCO, L.P. JRU 195H was drilled to a measured depth of 18,401' (11,104' TVD). The well was completed in July 2014 and fracture stimulation was conducted by plug and perf method through perforations from 10,228'-18,330'. The majority of the lateral is completed in the Wolfcamp formation. Four clusters of perforations from 10,228' - 11,130' (stages 13 and 14) are placed in the Bone Spring formation (Exhibit 1).

Chemical fluid tracers ¹ were used in the fracture stimulation to evaluate frac stage contribution and effectiveness. Every frac stage was traced with a water tracer but only 12 of the 14 stages were traced with an oil tracer (there were only 12 oil tracers available when this well was fraced). Sampling of the flow back fluids and lab analyses has been on-going since the well started producing on 7/18/2014.

The proposed allocation formula is based on time weighted average recoveries in parts per billion (ppb) of the oil tracers from each stage using the water tracers to indicate if a stage is producing or not. Where an oil tracer was not used in a stage, an estimate of the recovery is used by taking an average of the stages on either side of the stage not tagged. This is true for stage 11. Stage 13 is assumed to not be producing since no water tracer has been detected to date. Further, the ppb of the water tracer in stage 14 has fallen below detectable levels at this time simply because the majority of the frac fluid load has been recovered. The stage,

¹ Chemical tracers are supplied by ProTechnics (a division of Core Laboratories) and are a proprietary product. The water tracer (CFT) is water soluble and is placed in the frac water. The oil tracer (OFT) is oil soluble and placed in the pad portion of the frac stage. It adheres to oil in the formation. Flow back samples are taken, both oil and water, and analyzed in the lab for the chemical.

however, continues to show detectable levels for the oil tracer. Stages 13 and 14 are the stages perforated in the Bone Spring interval. Exhibits 2 and 3 show the allocation method and calculations by using the chemical tracers.

The well was put on artificial lift on 10/2/2014 and there was not a noticeable change in the trend for recoveries from the Bone Spring section.

1)

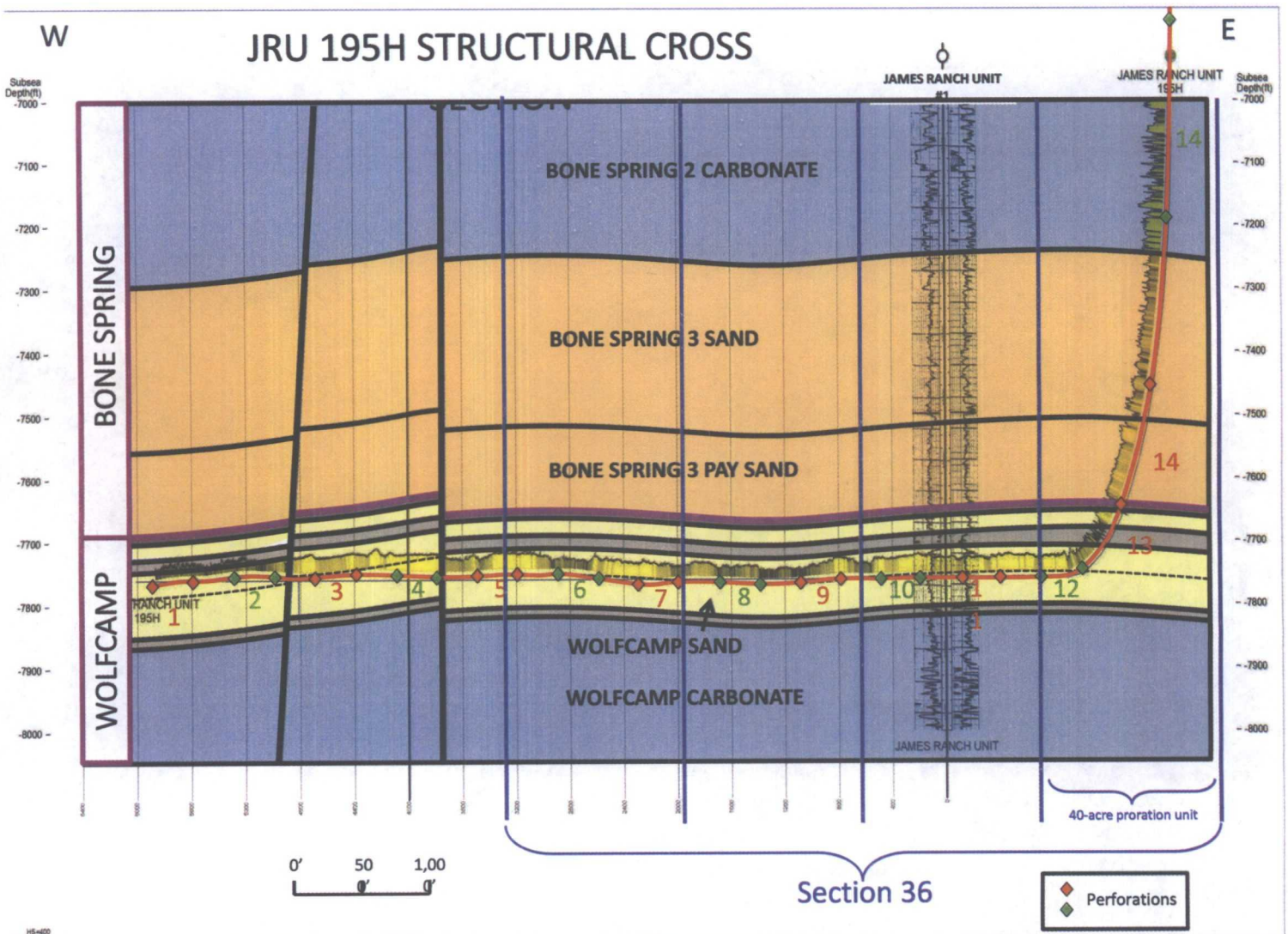


Exhibit 1

JRU 195H Water Tracer Results – All Stages traced

Bone Spring

Wolfcamp

BOPCO, Inc. James Ranch Unit 195H Chemical Tracer Results

Chemical Frac Tracer Concentration, ppb

			712																	
			Traced Segment	14	13	12	11	10	9	8	7	6	5	4	3	2	1			
			Stim Date	7/11/14	7/11/14	7/7/14	7/7/14	7/7/14	7/7/14	7/7/14	7/7/14	7/7/14	7/7/14	7/7/14	7/7/14	7/7/14	7/7/14	7/7/14	7/7/14	Totals
			Traced Fluid vol (Gal)	198,478	245,028	247,128	284,340	250,656	233,814	235,578	235,746	237,804	236,040	236,040	236,964	255,696	238,350	3,371,662		
			CFT Injected (g)	663	710	734	876	758	710	687	710	710	710	710	710	710	758	710	10,156	
			% Injected	6.5%	7.0%	7.2%	8.6%	7.5%	7.0%	6.8%	7.0%	7.0%	7.0%	7.0%	7.0%	7.5%	7.0%			
Key	Cum Vol*	Sample Date	Sample Type	CFT 3000	CFT 2500	CFT 2400	CFT 1500	CFT 2100	CFT 1600	CFT 2200	CFT 1900	CFT 2000	CFT 1700	CFT 1300	CFT 1200	CFT 1100	CFT 1000	CFT Total ppb		
>200	1	2907	7/18/14 7:00	Water (Produced)	2.0	0.0	5.2	5.1	4.6	13.4	7.6	21.9	7.4	24.8	27.3	20.1	36.9	14.7	190.9	
150 to 200	2	4852	7/19/14 7:00	Water (Produced)	1.9	0.0	9.8	8.8	6.9	18.8	9.8	28.1	9.3	23.6	32.8	24.9	37.8	13.3	225.9	
100 to 150	3	6565	7/20/14 7:00	Water (Produced)	1.7	0.0	12.1	8.8	6.8	19.9	9.8	31.9	8.5	19.6	28.8	23.1	31.4	9.4	211.8	
70 to 100	4	8170	7/21/14 7:00	Water (Produced)	1.4	0.0	13.2	8.8	7.7	22.2	12.6	26.5	8.4	18.9	30.4	22.7	29.6	9.2	211.7	
50 to 70	5	8913	7/22/14 7:00	Water (Produced)	0.8	0.0	4.7	5.3	5.9	28.8	10.7	29.7	10.0	22.7	26.3	18.2	25.1	9.3	202.5	
35 to 50	6	11293	7/23/14 7:00	Water (Produced)	0.7	0.0	15.7	11.0	7.6	17.4	7.1	22.2	5.5	13.6	26.3	13.2	20.5	4.5	165.1	
25 to 35	7	13125	7/24/14 7:00	Water (Produced)	1.2	0.0	19.8	15.3	6.8	23.1	10.1	16.7	7.4	21.2	24.8	17.7	26.8	10.0	201.2	
17 to 25	8	16116	7/26/14 7:00	Water (Produced)	1.3	0.0	16.3	10.9	6.9	21.6	10.5	15.5	7.7	22.5	24.2	17.6	23.6	9.0	187.6	
12 to 17	9	18303	7/28/14 7:00	Water (Produced)	1.1	0.0	16.0	10.2	6.6	19.3	10.0	14.4	7.4	22.7	23.3	17.0	21.5	8.3	177.7	
8 to 12	10	20169	7/30/14 7:00	Water (Produced)	1.1	0.0	15.8	9.5	6.1	17.6	10.1	18.9	7.3	20.8	22.4	15.6	20.5	8.2	168.6	
5 to 8	11	22107	8/1/14 7:00	Water (Produced)	0.9	0.0	14.7	8.3	5.5	15.7	9.5	13.0	6.9	15.6	20.9	14.4	19.1	7.2	151.7	
3 to 5	12	23805	8/3/14 7:00	Water (Produced)	0.8	0.0	15.1	7.7	5.6	16.3	10.4	13.1	7.4	16.0	20.1	13.4	16.6	5.9	148.4	
2 to 3	13	25156	8/5/14 7:00	Water (Produced)	0.9	0.0	14.2	7.4	5.3	15.9	10.0	12.8	7.3	15.1	19.0	13.2	16.1	4.8	141.8	
1 to 2	14	26935	8/7/14 7:00	Water (Produced)	0.8	0.0	12.1	6.2	5.1	14.2	9.0	11.5	6.3	11.7	19.1	12.6	14.2	4.7	127.2	
0.5 to 1	15	29638	8/9/14 7:00	Water (Produced)	0.7	0.0	11.0	5.7	4.5	13.2	8.6	10.9	5.5	11.8	18.3	11.9	12.6	4.0	118.8	
	16	32097	8/11/14 7:00	Water (Produced)	0.5	0.0	10.0	5.5	4.3	13.7	8.4	10.0	5.1	11.5	17.4	10.8	11.2	4.0	112.4	
	17	34111	8/13/14 7:00	Water (Produced)	0.5	0.0	9.5	5.3	3.9	13.2	8.1	9.8	4.9	10.5	15.1	10.1	10.4	3.7	104.9	
	18	39469	8/20/14 7:00	Water (Produced)	0.3	0.0	5.7	3.8	2.3	7.0	4.3	6.3	3.1	6.1	7.6	5.4	6.8	2.2	60.9	
	19	43632	8/27/14 7:00	Water (Produced)	0.3	0.0	4.9	3.4	2.0	6.0	3.7	5.5	2.7	4.7	6.3	4.5	5.5	1.8	51.2	
	20	47202	9/3/14 7:00	Water (Produced)	0.3	0.0	5.0	3.5	2.0	6.2	3.4	5.4	2.7	4.8	6.2	4.5	5.4	1.8	51.0	
	21	50348	9/10/14 7:00	Water (Produced)	0.0	0.0	4.2	2.9	1.6	5.1	3.0	4.6	2.1	3.8	5.1	3.4	4.2	1.5	41.4	
	22	53185	9/17/14 7:00	Water (Produced)	0.0	0.0	3.9	2.8	1.5	4.7	2.9	4.3	2.1	3.6	4.5	3.2	3.9	1.4	38.7	
	23	55799	9/24/14 7:00	Water (Produced)	0.0	0.0	3.4	2.3	1.4	4.1	2.4	3.7	1.7	2.9	3.8	2.5	3.2	1.2	32.6	
	24	59171	10/4/14 7:00	Water (Produced)	0.0	0.0	3.3	2.6	1.8	4.5	2.8	3.8	1.7	3.2	5.5	3.5	3.9	1.5	37.9	
	25	62511	10/8/14 7:00	Water (Produced)	0.0	0.0	3.3	2.5	1.7	4.2	2.6	3.6	1.7	3.1	4.5	3.0	3.5	1.4	34.9	
	26	64755	10/12/14 7:00	Water (Produced)	0.0	0.0	3.7	2.8	1.5	4.3	2.8	4.3	1.8	3.2	4.7	2.8	3.3	1.2	36.3	
	27	69882	10/24/14 7:00	Water (Produced)	0.0	0.0	3.7	2.4	1.5	4.4	2.3	3.7	1.6	2.9	3.7	2.2	2.9	1.1	32.4	
	712		Time Weighted Avg, ppb	0.32	0.00	6.53	4.25	2.78	8.31	4.75	7.44	3.38	7.32	9.63	6.56	8.28	2.90	72.44		
	Avg BPD		% total ppb from Stage	0.4%	0.0%	9.0%	5.9%	3.8%	11.5%	6.6%	10.3%	4.7%	10.1%	13.3%	9.1%	11.4%	4.0%	100.0%		
			% total ppb @ last sample	0.0%	0.0%	11.3%	7.3%	4.7%	13.6%	7.1%	11.5%	4.9%	9.0%	11.5%	6.8%	9.0%	3.3%			
			Mass Balance Recov'd (g)	6.6	0.0	93.2	61.5	41.7	123.3	68.4	119.0	50.4	119.5	156.1	107.8	144.2	50.5	1,142.1		
			% of Total Recovery	0.6%	0.0%	8.2%	5.4%	3.6%	10.8%	6.0%	10.4%	4.4%	10.5%	13.7%	9.4%	12.6%	4.4%	100.0%		

Stage 13 shows 0 ppb water tracer
Assume no oil contribution

JRU 195H Oil Tracer Results – Stage 13 and 11 not traced – (only 12 tracers available at time of frac)

% oil contribution from Bone Spring – $2.1^{(1)}/38.6^{(2)} = 5.4\%$

Bone Spring

Wolfcamp

BOPCO, Inc. James Ranch Unit 195H Oil Tracer Results

				Oil Frac Tracer Concentration, ppb													
				Traced Segment	14	12	10	9	8	7	6	5	4	3	2	1	
				Stim Date	7/11/14	7/7/14	7/7/14	7/7/14	7/7/14	7/7/14	7/7/14	7/7/14	7/7/14	7/7/14	7/7/14	7/7/14	Totals
				OFT Injected (gr)	250	250	250	250	250	250	250	250	250	250	250	250	3000
				% Injected	8.3%	8.3%	8.3%	8.3%	8.3%	8.3%	8.3%	8.3%	8.3%	8.3%	8.3%	8.3%	
Key	Cum Vol*	Sample Date	Sample Type	OFT 5800	OFT 5300	OFT 5200	OFT 5000	OFT 5100	OFT 5500	OFT 5400	OFT 5900	OFT 5700	OFT 5600	OFT 15010	OFT 15000	OFT Tot ppb	
>1200	1	not given 7/23/14 19:00	Oil (Produced)	0.0	0.0	4.8	3.8	7.8	7.3	5.0	3.5	1.8	3.6	11.0	104.5	153	
1000 to 1200	2	not given 7/24/14 7:00	Oil (Produced)	0.0	3.3	4.8	3.6	6.4	9.4	6.2	3.8	1.8	3.9	14.3	53.3	111	
800 to 1000	3	not given 7/25/14 7:00	Oil (Produced)	5.6	5.5	4.4	3.3	5.4	7.1	6.0	3.1	1.6	4.3	14.2	40.5	101	
600 to 800	4	not given 7/26/14 7:00	Oil (Produced)	3.7	3.7	2.7	2.2	3.4	3.6	3.7	1.9	1.2	3.3	13.2	28.1	71	
500 to 600	5	not given 7/27/14 7:00	Oil (Produced)	3.5	3.5	2.6	2.2	3.1	3.0	3.4	2.3	1.7	3.1	13.3	23.4	65	
400 to 500	6	not given 7/28/14 7:00	Oil (Produced)	3.1	2.9	2.4	2.1	2.8	2.5	2.9	1.7	1.7	3.0	11.8	17.9	55	
300 to 400	7	not given 7/30/14 7:00	Oil (Produced)	2.5	2.2	1.9	1.8	2.1	1.9	2.2	1.7	1.4	2.9	8.9	14.4	44	
200 to 300	8	not given 8/1/14 7:00	Oil (Produced)	2.9	2.7	2.4	2.2	2.6	2.5	3.0	2.2	1.9	3.1	8.5	15.0	49	
150 to 200	9	6226 8/3/14 7:00	Oil (Produced)	1.5	2.3	2.3	1.5	2.1	2.0	2.4	2.4	1.2	2.3	22.0	26.7	69	
100 to 150	10	7475 8/5/14 7:00	Oil (Produced)	1.4	2.1	2.3	1.5	2.1	2.0	2.3	2.3	1.6	4.2	20.4	25.1	68	
60 to 100	11	9060 8/7/14 7:00	Oil (Produced)	1.3	2.2	2.3	1.6	2.1	2.1	2.3	2.5	1.5	2.0	26.2	25.9	72	
40 to 60	12	11362 8/9/14 7:00	Oil (Produced)	1.2	2.0	2.0	1.2	1.8	2.3	2.0	1.5	1.1	1.7	17.6	22.4	57	
20 to 40	13	13803 8/11/14 7:00	Oil (Produced)	1.5	2.6	2.4	1.5	2.0	2.2	2.2	2.4	1.4	2.4	17.7	19.0	57	
10 to 20	14	16007 8/13/14 7:00	Oil (Produced)	1.2	1.9	1.9	1.2	1.5	1.5	1.7	1.7	1.5	2.9	17.6	16.4	51	
	15	not given 8/20/14 7:00	Oil (Produced)	2.9	2.7	2.9	2.0	2.5	2.3	2.4	2.8	2.3	1.9	4.8	8.1	38	
	16	not given 8/27/14 7:00	Oil (Produced)	2.2	2.2	2.1	1.7	2.2	2.0	2.1	2.5	1.9	2.5	4.3	9.4	35	
	17	not given 9/3/14 7:00	Oil (Produced)	2.2	2.3	2.3	1.8	2.2	2.0	2.1	2.4	2.0	2.8	4.3	9.4	36	
	18	not given 9/10/14 7:00	Oil (Produced)	2.1	2.3	2.3	1.9	2.3	1.9	2.0	2.6	2.1	1.5	5.2	9.0	35	
	19	not given 9/17/14 7:00	Oil (Produced)	2.0	2.2	2.0	1.7	2.2	1.7	1.8	2.5	1.6	3.1	4.5	10.7	36	
	20	not given 9/24/14 7:00	Oil (Produced)	1.9	2.0	1.8	1.6	2.1	1.7	1.9	2.2	2.1	2.0	2.9	7.9	30	
	21	not given 10/4/14 7:00	Oil (Produced)	2.9	3.6	2.8	1.5	2.1	2.4	2.2	0.9	1.2	2.6	0.9	3.6	27	
	22	not given 10/8/14 7:00	Oil (Produced)	2.2	3.6	2.5	1.5	2.1	1.9	2.0	1.0	1.0	1.6	0.7	2.7	23	
	23	not given 10/12/14 7:00	Oil (Produced)	1.2	1.9	1.5	1.2	1.3	1.2	1.3	0.6	0.9	1.3	0.5	1.5	14	
	24	not given 10/24/14 7:00	Oil (Produced)	1.1	1.6	1.1	0.9	1.1	1.1	3.7	1.7	0.3	0.7	0.6	2.1	16	
			Time Weighted Avg, ppb	2.1	2.4	2.2	1.6	2.1	2.0	2.4	2.0	1.5	2.2	5.8	10.1	36.3	
	BPD		% total ppb from Stage	5.7%	6.7%	6.0%	4.4%	5.7%	5.5%	6.6%	5.5%	4.1%	6.0%	16.1%	27.7%	100.0%	
			% total ppb @ last sample	6.9%	10.2%	7.1%	5.7%	6.9%	6.6%	22.9%	10.6%	2.1%	4.4%	3.6%	13.0%		

Assume Stage 13 to be 0 ppb
Based on no indication of
production from water tracer

Estimate Stage 11 to be 2.3 ppb
(Average if Stages 12 and 10)

- 1) Total ppb - $36.3 + 2.3 = 38.6$
- 2) Total ppb Bone Spring = 2.1

DISTRICT I1625 N. French Dr., NM 88240
Phone:(505)393-6161 Fax:(505)393-0720**DISTRICT II**811 S. First St., Artesia, NM 88210
Phone:(505)748-1283 Fax:(505)748-9720**DISTRICT III**1000 Rio Brazos, Aztec, NM 87410
Phone:(505)334-6176 Fax:(505)334-6170**DISTRICT IV**1220 S. St. Francis Dr., Santa Fe, NM 87505
Phone:(505)470-3400 Fax:(505)470-3402State of New Mexico
Energy, Minerals and Natural Resources Department**OIL CONSERVATION DIVISION**1220 South St. Francis Dr.
Santa Fe, New Mexico 87505

Form C-102

Revised August 1, 2011

Submit one copy to appropriate
District Office**WELL LOCATION AND ACREAGE DEDICATION PLAT**☒ AMENDED REPORT
As Drilled

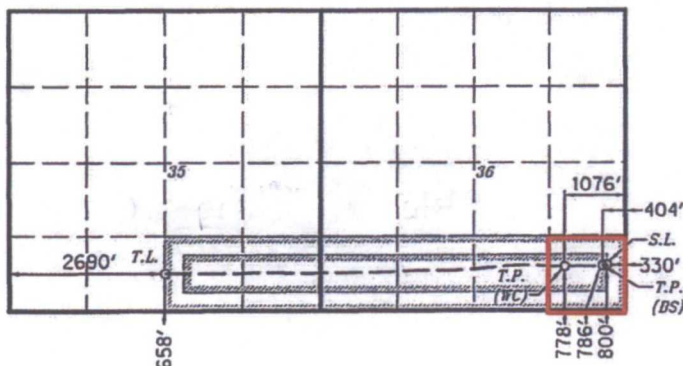
API Number 30-015-42324	Pool Code 40295	Pool Name Los Medanos, Bone Spring
Property Code	Property Name JAMES RANCH UNIT	Well Number 195H
GRID No. 260737	Operator Name BOPCO, L.P.	Elevation 3310'

Surface Location

UL or lot No.	Section	Township	Range	Lot Idn	Feet from the	North/South line	Feet from the	East/West line	County
P	36	22 S	30 E		800'	SOUTH	330'	EAST	EDDY

Bottom Hole if Different From Surface

UL or lot No.	Section	Township	Range	Lot Idn	Feet from the	North/South line	Feet from the	East/West line	County
0	35	22 S	30 E		658'	SOUTH	2690'	WEST	EDDY
Dedicated Acres 40	Joint or Infill	Consolidation Code	Order No.						

NO ALLOWABLE WILL BE ASSIGNED TO THIS COMPLETION UNTIL ALL INTERESTS HAVE BEEN CONSOLIDATED
OR A NON-STANDARD UNIT HAS BEEN APPROVED BY THE DIVISION**TERMINUS LOCATION**Lat - N 32°20'34.96"
Long - W 103°51'03.91"
NMSPC- N 488850.2
E 648935.2
Depth - 18378'
(NAD-27)**TOP PERFORATION
WOLF CAMP (WC)**Lat - N 32°20'35.98"
Long - W 103°49'42.99"
NMSPC- N 488985.8
E 655877.3
Depth - 11428'
(NAD-27)**TOP PERFORATION
BONE SPRING (BS)**Lat - N 32°20'36.05"
Long - W 103°49'35.15"
NMSPC- N 488995.5
E 656549.4
Depth - 10288'
(NAD-27)**SURFACE LOCATION**Lat - N 32°20'36.18"
Long - W 103°49'34.29"
NMSPC- N 489009.4
E 656623.7
(NAD-27)

SCALE 1"=3000'

OPERATOR CERTIFICATIONI hereby certify that the information
contained herein is true and complete to
the best of my knowledge and belief, and that
this organization either owns a working
interest or unleased mineral interest in the
land including the proposed bottom hole
location pursuant to a contract with an
owner of such a mineral or working interest,
or to a voluntary pooling agreement or a
compulsory pooling order heretofore entered
by the division.*Tracie J. Cherry*
Signature Date

Tracie J. Cherry

Printed Name
TJCherry@basspet.com

Email Address

SURVEYOR CERTIFICATIONI hereby certify that the well location shown
on this plat was plotted from field notes of
actual surveys made by me or under my
supervision and that the same is true and
correct to the best of my belief.

OCTOBER 8, 2014

Date Surveyed

Signature & seal of
Professional SurveyorTIM C. PAPPAS
Certificate No. 21209

HALFF ASSOC., INC

29714-W011

DISTRICT I1025 N. French Dr. NM 88240
Phone:(575)393-6161 Fax:(575)393-0720**DISTRICT II**811 S. First St., Artesia, NM 88210
Phone:(575)748-1283 Fax:(575)748-9720**DISTRICT III**1000 Rio Brazos, Aztec, NM 87410
Phone:(505)334-6176 Fax:(505)331-6170**DISTRICT IV**1220 S. St. Francis Dr., Santa Fe, NM 87505
Phone:(505)476-3460 Fax:(505)476-3462State of New Mexico
Energy, Minerals and Natural Resources Department**OIL CONSERVATION DIVISION**1220 South St. Francis Dr.
Santa Fe, New Mexico 87505

Form C-102

Revised August 1, 2011

Submit one copy to appropriate
District Office**WELL LOCATION AND ACREAGE DEDICATION PLAT**X AMENDED REPORT
"As Drilled"

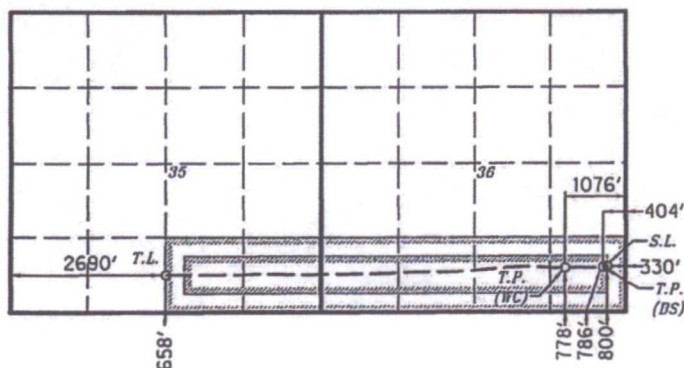
API Number 30-015-42324	Pool Code 96336	Pool Name Los Medanos, Wolfcamp, S.
Property Code	Property Name JAMES RANCH UNIT	Well Number 195H
GRID No. 260737	Operator Name BOPCO, L.P.	Elevation 3310'

Surface Location

UL or lot No.	Section	Township	Range	Lot Idn	Feet from the	North/South line	Feet from the	East/West line	County
P	36	22 S	30 E		800'	SOUTH	330'	EAST	EDDY

Bottom Hole if Different From Surface

UL or lot No.	Section	Township	Range	Lot Idn	Feet from the	North/South line	Feet from the	East/West line	County
0	35	22 S	30 E		658'	SOUTH	2690'	WEST	EDDY
Dedicated Acres 320	Joint or Infill	Consolidation Code	Order No.						

NO ALLOWABLE WILL BE ASSIGNED TO THIS COMPLETION UNTIL ALL INTERESTS HAVE BEEN CONSOLIDATED
OR A NON-STANDARD UNIT HAS BEEN APPROVED BY THE DIVISION**TERMINUS LOCATION**Lat - N 32°20'34.96"
Long - W 103°51'03.91"
NMSPC- N 488850.2
E 648935.2
Depth - 18378'
(NAD-27)**TOP PERFORATION
WOLF CAMP (WC)**Lat - N 32°20'35.98"
Long - W 103°49'42.99"
NMSPC- N 488985.8
E 655877.3
Depth - 11428'
(NAD-27)**TOP PERFORATION
BONE SPRING (BS)**Lat - N 32°20'36.05"
Long - W 103°49'35.15"
NMSPC- N 488935.5
E 656549.4
Depth - 10288'
(NAD-27)**SURFACE LOCATION**Lat - N 32°20'36.18"
Long - W 103°49'34.29"
NMSPC- N 489009.4
E 656623.7
(NAD-27)

SCALE 1"=3000'

OPERATOR CERTIFICATION

I hereby certify that the information contained herein is true and complete to the best of my knowledge and belief, and that this organization either owns a working interest or unleased mineral interest in the land including the proposed bottom hole location pursuant to a contract with an owner of such a mineral or working interest, or to a voluntary pooling agreement or a compulsory pooling order heretofore entered by the division.

Signature *Tracie J. Cherry* Date *10/14/14*Printed Name
Tracie J. Cherry

TJCherry@basspet.com

Email Address

SURVEYOR CERTIFICATION

I hereby certify that the well location shown on this plat was plotted from field notes of actual surveys made by me or under my supervision and that the same is true and correct to the best of my belief.

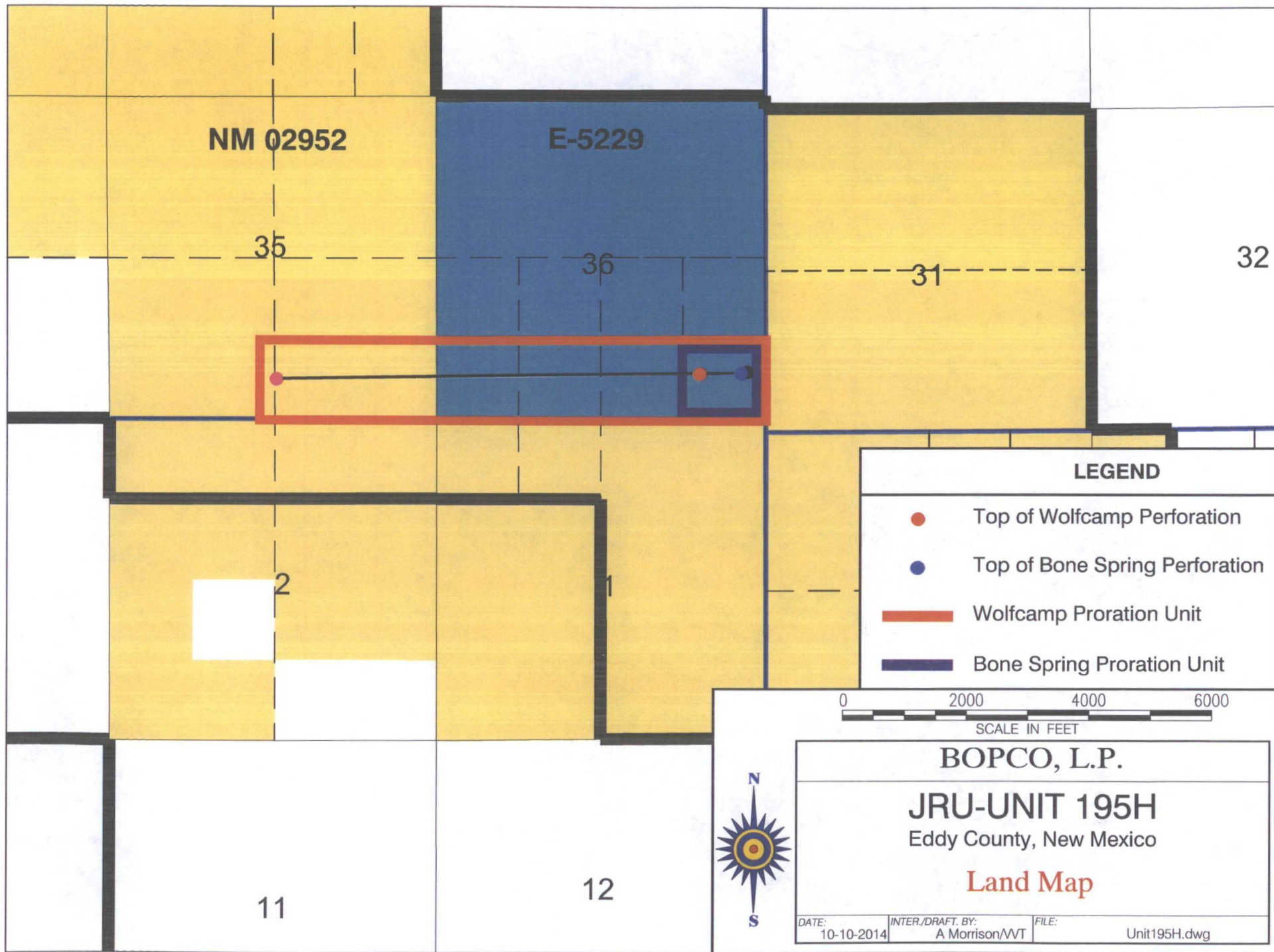
OCTOBER 8, 2014

Date Surveyed

Signature & seal of
Professional SurveyorTIM C. PAPPAS
Certificate No. 21209

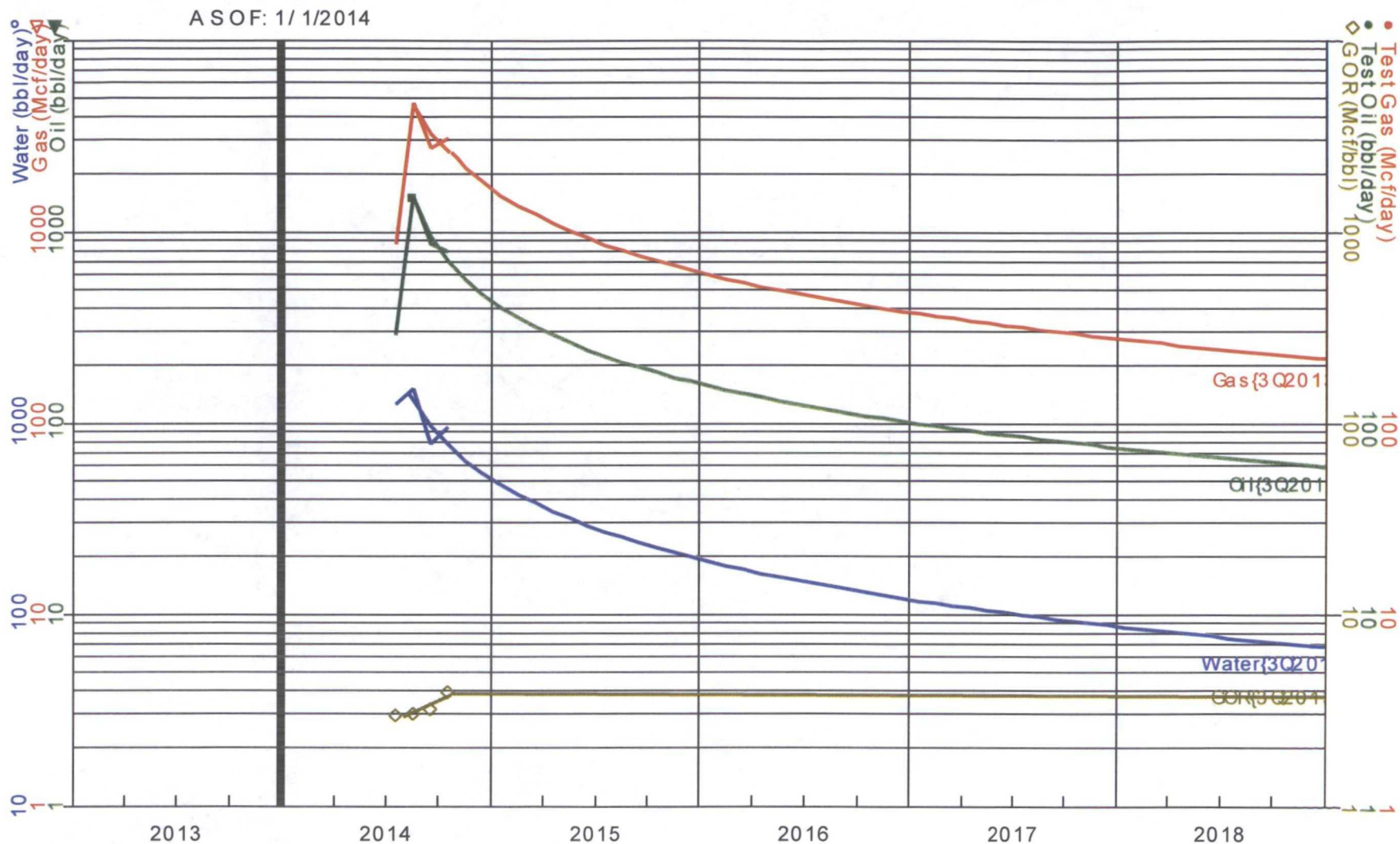
HALFF ASSOC., INC

29714-1011



Case Name: JAMES RANCH UNIT 195H
 Field: James Ranch Unit
 Reservoir: Wolfbone

County, State: Eddy, NM
 Location: SE/4 SE/4 36-22S-30E

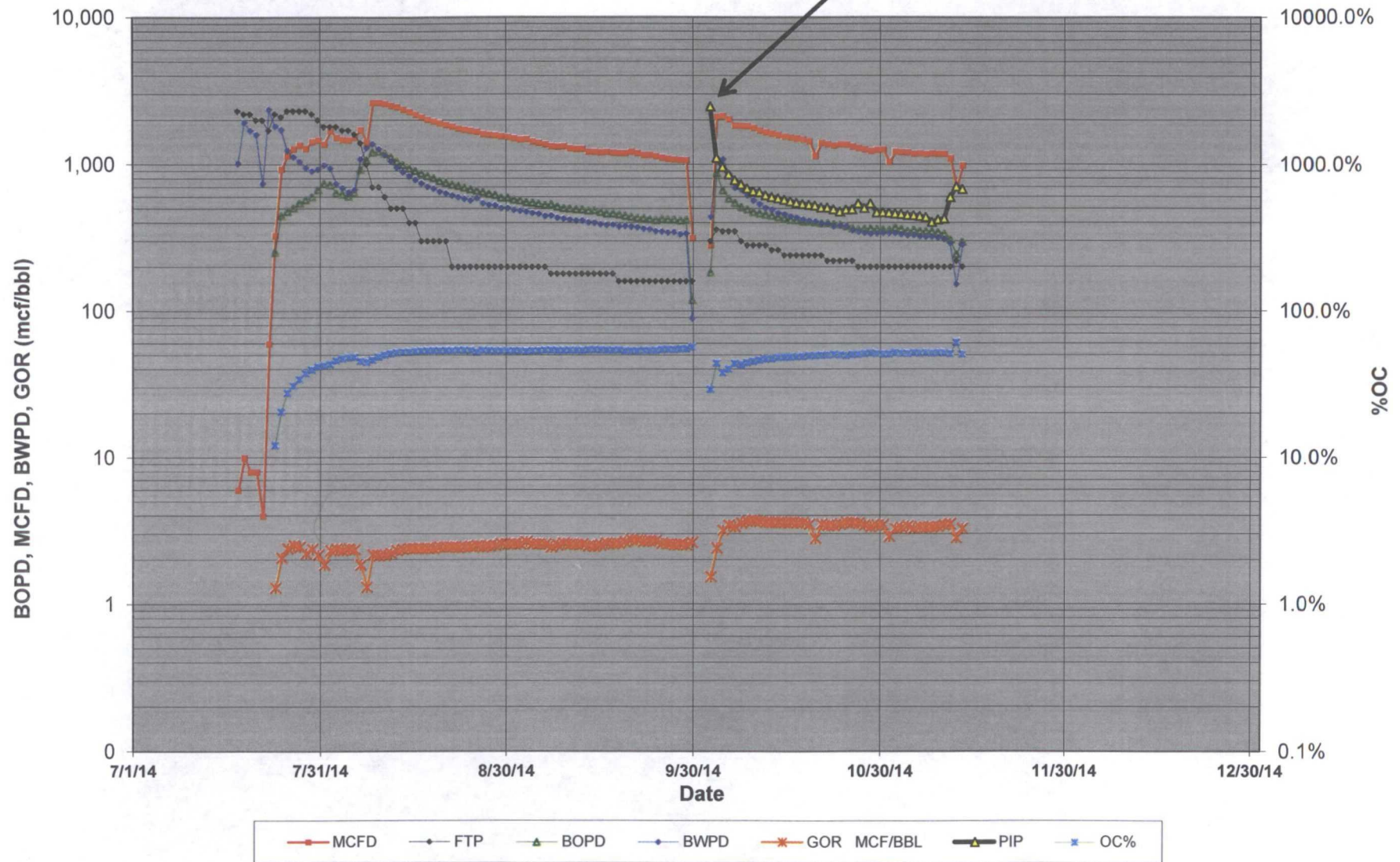


Hist Oil Cum: 0.00 Mbbl
 Oil Rem: 571.83 Mbbl
 Oil EUR: 571.83 Mbbl

Hist Gas Cum: 0.00 MMcf
 Gas Rem: 1,966.69 MMcf
 Gas EUR: 1,966.69 MMcf

JRU 195H Wolfcamp A Sand
API: 30-015-42324

Put on ESPS - 10/3/2014





Downhole Profile - Vertical Wells

Well Name: JAMES RANCH UNIT #195H

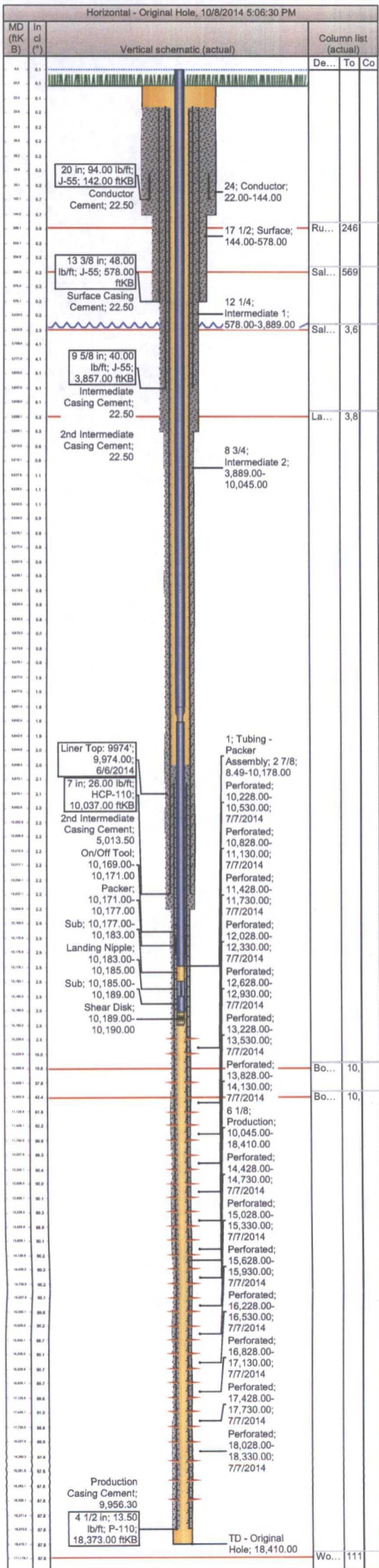
Field: Los Medanos (Bone Spring)

BOPCO, L.P. - West Texas

Well ID: 30-015-42324

Sect: 36 Town: 22S Rng: 30E County: Eddy State: New Mexico

Surface Location: 800' FSL & 330' FEL, Sec 36, T22S-R30E



Well Information							
Orig KB Elev (ft)	Gr Elev (ft)	KB-Grd (ft)	Spud Date	On Production Date	PBTD (All) (ftKB)		
3,332.00	3,310.00	22.00	5/3/2014	7/18/2014			
Wellbores							
Wellbore Name: Original Hole				Kick Off Depth (ftKB):			
Size (in)		Act Top (ftKB)		Act Btm (ftKB)			
24		22.0		144.0			
17 1/2		144.0		578.0			
12 1/4		578.0		3,889.0			
8 3/4		3,889.0		10,045.0			
6 1/8		10,045.0		18,410.0			
Schematic Annotations							
Type	Depth (ftKB)		Annotation				
Casing Strings							
Csg Des	Wellbore	OD (in)	Wt (lb/ft)	Grade	Top Thread	Set @ (ftKB)	Top (ftKB)
Conductor	Original Hole	20	94.00	J-55		142.00	30.0
Surface	Original Hole	13 3/8	48.00	J-55	ST&C	578.00	22.5
Intermediate 1	Original Hole	9 5/8	40.00	J-55	LT&C	3,857.00	22.5
Intermediate 2	Original Hole	7	26.00	HCP-110	BT&C	10,037.00	22.5
Liner	Original Hole	4 1/2	13.50	P-110	BT&C	18,373.00	9,973.3
Perforations							
Perf Date	Top (ftKB)	Btm (ftKB)	Zone		Current Status		
7/7/2014	10,228.0	10,530.0	Upper Wolfcamp, Original Hole		Active (10,528.0 - 10,530.0)		
7/7/2014	10,828.0	11,130.0	Upper Wolfcamp, Original Hole		Active (10,828.0 - 10,830.0)		
7/7/2014	11,428.0	11,730.0	Upper Wolfcamp, Original Hole		Active (11,428.0 - 11,430.0)		
7/7/2014	12,028.0	12,330.0	Upper Wolfcamp, Original Hole		Active (12,028.0 - 12,030.0)		
7/7/2014	12,628.0	12,930.0	Upper Wolfcamp, Original Hole		Active (12,928.0 - 12,930.0)		
7/7/2014	13,228.0	13,530.0	Upper Wolfcamp, Original Hole		Active (13,528.0 - 13,530.0)		
7/7/2014	13,828.0	14,130.0	Upper Wolfcamp, Original Hole		Active (14,128.0 - 14,130.0)		
7/7/2014	14,428.0	14,730.0	Upper Wolfcamp, Original Hole		Active (14,728.0 - 14,730.0)		
7/7/2014	15,028.0	15,330.0	Upper Wolfcamp, Original Hole		Active (15,328.0 - 15,330.0)		
7/7/2014	15,628.0	15,930.0	Upper Wolfcamp, Original Hole		Active (15,628.0 - 15,630.0)		
7/7/2014	16,228.0	16,530.0	Upper Wolfcamp, Original Hole		Active (16,228.0 - 16,230.0)		
7/7/2014	16,828.0	17,130.0	Upper Wolfcamp, Original Hole		Active (17,128.0 - 17,130.0)		
7/7/2014	17,428.0	17,730.0	Upper Wolfcamp, Original Hole		Active (17,428.0 - 17,430.0)		
7/7/2014	18,028.0	18,330.0	Upper Wolfcamp, Original Hole		Active (18,328.0 - 18,330.0)		
Tubing Strings							
Tubing Description		Run Date	String Length (ft)		Set Depth (ftKB)		
Tubing - Packer Assembly		7/16/2014	10,169.51		10,178.00		
No.	Item Des		Jts	OD (in)	Wt (lb/ft)	Grade	Top (ftKB)
1-1	2-7/8" 7.9 ppf L-80 8RD Tubing		322	2 7/8	7.90	L-80	8.5
1-2	Cross Over		1	2 7/8	7.90	L-80	9,891.4
1-3	2-3/8" 4.7 ppf L-80 8RD Tubing		9	2 3/8	4.70	L-80	9,892.4
Other Downhole Equipment							
Run Date	Des		OD (in)	Top (ftKB)		Btm (ftKB)	
7/16/2014	On/Off Tool		3 3/4	10,169.00		10,171.00	
7/16/2014	Packer		3 3/4	10,171.00		10,177.00	
7/16/2014	Sub		2 3/8	10,177.00		10,183.00	
7/16/2014	Landing Nipple		2 3/8	10,183.00		10,185.00	
7/16/2014	Sub		2 3/8	10,185.00		10,189.00	
7/16/2014	Shear Disk		2 3/8	10,189.00		10,190.00	
Cement							
Conductor Cement , 4/30/2014							
String: Conductor, 142.00ftKB				Cement Evaluation Results:			
Stage Number	Stage Top (ftKB)	Stage Bottom (ftKB)	Vol Cement Ret (bbl)	Top Measurement Method			
1	22.5	142.0		Circulated			
Surface Casing Cement , 5/5/2014							
String: Surface, 578.00ftKB				Cement Evaluation Results: Circulated 80 bbls (340 sacks) to surface.			
Stage Number	Stage Top (ftKB)	Stage Bottom (ftKB)	Vol Cement Ret (bbl)	Top Measurement Method			
1	22.5	578.0	80.0	Circulated			
Fluid		Amount (sacks)	Class	Dens (lb/gal)		Yield (ft³/sack)	
Lead		580	Halcom C	14.80		1.33	
Intermediate Casing Cement , 5/9/2014							
String: Intermediate 1, 3,857.00ftKB				Cement Evaluation Results: Circulated 168 Bbls (511 sacks) to surface			
Stage Number	Stage Top (ftKB)	Stage Bottom (ftKB)	Vol Cement Ret (bbl)	Top Measurement Method			
1	22.5	3,859.0	168.0	Circulated			
Fluid		Amount (sacks)	Class	Dens (lb/gal)		Yield (ft³/sack)	
Lead		1,200	C	12.90		1.85	
Tail		290	C	14.80		1.33	
Intermediate Casing Cement , 5/16/2014							
String: Intermediate 2, 10,037.00ftKB				Cement Evaluation Results: Lost circulation while mixing cement on second stage, 228 bbls away.			
Stage Number	Stage Top (ftKB)	Stage Bottom (ftKB)	Vol Cement Ret (bbl)	Top Measurement Method			
1	5,013.5	10,045.0	0.0				
Fluid		Amount (sacks)	Class	Dens (lb/gal)		Yield (ft³/sack)	
Lead		550	H	12.00		2.14	
Stage Number	Stage Top (ftKB)	Stage Bottom (ftKB)	Vol Cement Ret (bbl)	Top Measurement Method			
2	22.5	5,013.5	0.0				
Fluid		Amount (sacks)	Class	Dens (lb/gal)		Yield (ft³/sack)	
Lead		790	C	11.00		2.35	
Liner Cement , 6/7/2014							
String: Liner, 18,373.00ftKB				Cement Evaluation Results: Circulated 40 Bbls (145 sacks) to surface			
Stage Number	Stage Top (ftKB)	Stage Bottom (ftKB)	Vol Cement Ret (bbl)	Top Measurement Method			
1	9,956.3	18,373.0	30.0	Circulated			
Fluid		Amount (sacks)	Class	Dens (lb/gal)		Yield (ft³/sack)	
Lead		900	H	14.50		1.21	

GENERAL OFFICES - FORT WORTH, TEXAS

BOPCO, L.P.

P.O. Box 2760
Midland, Tx 79702
(432) 683-2277
(432) 687-0329 (fax)



Certified Mail 7160 3901 9846 4322 4249

December 05, 2014

Reagan Houston Legg, Jr.
342 Catlin Circle
Highland Village, TX 75077

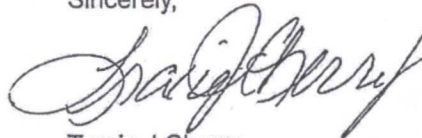
RE: Application for Downhole Commingling
Los Medanos; Bone Spring &
Los Medanos; Wolfcamp, S. Pools
James Ranch Unit #195H
Eddy County, New Mexico

Dear Ms. Jackson:

This letter is to notify you, as interest owner in the above referenced well, that BOPCO, L.P. is petitioning the Bureau of Land Management and New Mexico Oil Conservation Division (NMOCD) for permission to commingle production from two formations in the wellbore of the reference well. Enclosed is a copy of NMOCD the form C-107A submitted and a map showing the location of the referenced well.

If you should have any questions or require additional information concerning this application please feel free to contact me. Any objections or requests for hearing must be filed with the Oil Conservation Division, 1220 South St Frances Dr., Santa Fe, New Mexico 87505 within 20 days of this letter's date.

Sincerely,



Tracie J Cherry
Sr Regulatory Analyst

Enclosures

2. Article Number

7160 3901 9846 4322 4201

3. Service Type **CERTIFIED MAIL**

4. Restricted Delivery? (Extra Fee) ☐ Yes

1. Article Addressed to:

LINE 1

Oscura Resources, Inc.
PO Box 2292
Roswell, NM 88202-2292

PS Form 3811, January 2005

JRH 1957

COMPLETE THIS SECTION ON DELIVERY

A. Received by (Please Print Clearly)

B. Date of Delivery

C. Signature

X

☐ Agent
☐ Addressee

D. Is delivery address different from item 1?
If YES, enter delivery address below:

☐ Yes
☐ No

Thank you for using Return Receipt Service

↑ FOLD AND TEAR HERE ↓

Domestic Return Receipt

QUALITY PARK
9 x 12



7160 3901 9846 4322 4249

3. Service Type **CERTIFIED MAIL**

4. Restricted Delivery? (Extra Fee) ☐ Yes

1. Article Addressed to:

LINE 1•

Reagan Houston Legg, Jr.
342 Catlin Circle
Highland Village, TX 75077

PS Form 3811, January 2005

JRH 1/5H

COMPLETE THIS SECTION ON DELIVERY

A. Received by (Please Print Clearly)

B. Date of Delivery

C. Signature

X

☐ Agent
☐ Addressee

D. Is delivery address different from item 1?
If YES, enter delivery address below:

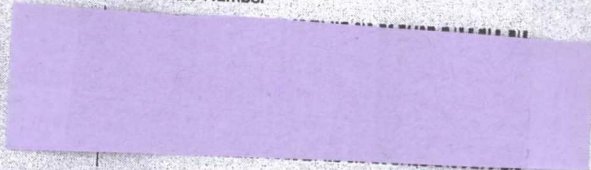
☐ Yes
☐ No

Thank you for using Return Receipt Service

FOLD AND TEAR HERE

Domestic Return Receipt

2. Article Number



7160 3901 9846 4322 4225

3. Service Type **CERTIFIED MAIL**

4. Restricted Delivery? (Extra Fee) ☐ Yes

1. Article Addressed to:

LINE 1

Ellen Legg Jackson
5921 Preston Road
Dallas, TX 75205

COMPLETE THIS SECTION ON DELIVERY

A. Received by (Please Print Clearly)

B. Date of Delivery

C. Signature

X

☐ Agent
☐ Addressee

D. Is delivery address different from Item 1?
If YES, enter delivery address below:

☐ Yes
☐ No

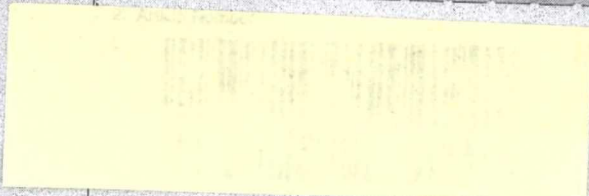
PS Form 3811, January 2005

JRU 195H

Domestic Return Receipt

Thank you for using Return Receipt Service

↑ FOLD AND TEAR HERE ↓



7160 3901 9846 4322 4232

3. Service Type **CERTIFIED MAIL**

4. Restricted Delivery? (Extra Fee) ☐ Yes

1. Article Addressed to:

LINE 1:

John Michael Legg
1105 Noble Way
Flower Mound, TX 75022

PS Form 3811, January 2005

JRN 195H

COMPLETE THIS SECTION ON DELIVERY

A. Received by (Please Print Clearly)

B. Date of Delivery

C. Signature

X

☐ Agent
☐ Addressee

D. Is delivery address different from item 1?
If YES, enter delivery address below:

☐ Yes
☐ No

Thank you for using Return Receipt Service

↓ FOLD AND TEAR HERE ↓

Domestic Return Receipt

2. Article Number



7160 3901 9846 4322 4218

3. Service Type **CERTIFIED MAIL**

4. Restricted Delivery? (Extra Fee) ☐ Yes

1. Article Addressed to:

LINE 1•

Emily Legg Anderson
5604 Lobello
Dallas, TX 75229

COMPLETE THIS SECTION ON DELIVERY

A. Received by (Please Print Clearly)

B. Date of Delivery

C. Signature

X

☐ Agent
☐ Addressee

D. Is delivery address different from item 1?
If YES, enter delivery address below:

☐ Yes
☐ No

PS Form 3811, January 2005

Domestic Return Receipt

JRU 195H

Thank you for using Return Receipt Service

↓ FOLD AND TEAR HERE ↓

QUALITY PARK

GENERAL OFFICES - FORT WORTH, TEXAS

BOPCO, L.P.

P.O. Box 2760
Midland, Tx 79702
(432) 683-2277
(432) 687-0329 (fax)

Certified Mail 7160 3901 9846 4322 4140

November 25, 2014

Mr. Ed Martin, Oil & Gas Manager
State of New Mexico
Commissioner of Public Lands
310 Old Santa Fe Trail
Santa Fe NM 87505

Re: James Ranch Unit, Well #195H
Application for Downhole Commingle
Los Medanos; Bone Spring & Los Medanos; Wolfcamp, S.
Eddy County, NM

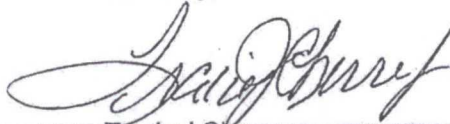
Mr. Martinez:

BOPCO, L.P. is submitting the attached application for approval to downhole commingle the referenced pools in the James Ranch Unit, Well 195H.

Copies of this application and request for approval have also been sent to the Bureau of Land Management and the NMOCD Santa Fe.

If you have any questions or need additional information, please call me at 432/683-2277.

Sincerely,



Tracie J. Cherry
Sr. Regulatory Analyst

Enclosures

CC: Terry Warnell

[English](#)[Customer Service](#)[USPS Mobile](#)[Register / Sign In](#)

USPS Tracking™

[Customer Service](#)
Have questions? We're here to help.

Tracking Number: 71603901984643224140

Updated Delivery Day: Tuesday, December 2, 2014

Product & Tracking Information

Postal Product:

Features:
Certified Mail™

Available Actions

[Text Updates](#)[Email Updates](#)[Return Receipt After Mailing](#)

DATE & TIME	STATUS OF ITEM	LOCATION
December 2, 2014 , 7:49 am	Delivered	SANTA FE, NM 87504
Your item was delivered at 7:49 am on December 2, 2014 in SANTA FE, NM 87504.		
December 2, 2014 , 7:49 am	Arrived at Unit	SANTA FE, NM 87594
November 28, 2014 , 2:30 am	Departed USPS Facility	ALBUQUERQUE, NM 87101
November 27, 2014 , 4:45 pm	Arrived at USPS Facility	ALBUQUERQUE, NM 87101
November 26, 2014 , 9:35 pm	Arrived at USPS Facility	MIDLAND, TX 79711

Track Another Package

Tracking (or receipt) number

[Track It](#)

HELPFUL LINKS

[Contact Us](#)[Site Index](#)[FAQs](#)

ON ABOUT.USPS.COM

[About USPS Home](#)[Newsroom](#)[USPS Service Updates](#)[Forms & Publications](#)[Government Services](#)[Careers](#)

OTHER USPS SITES

[Business Customer Gateway](#)[Postal Inspectors](#)[Inspector General](#)[Postal Explorer](#)[National Postal Museum](#)[Resources for Developers](#)

LEGAL INFORMATION

[Privacy Policy](#)[Terms of Use](#)[FOIA](#)[No FEAR Act EEO Data](#)

Copyright © 2014 USPS. All Rights Reserved.

7160 3901 9846 4322 4140

US Postal Service

**Certified
Mail
Receipt**

*Domestic Mail Only
No Insurance
Coverage Provided*

Postage

Certified Fee

Return Receipt Fee
(Endorsement Required)

Restricted Delivery Fee
(Endorsement Required)

Total Postage & Fees

\$

\$

Postmark
Here

Sent To:

*State of New Mexico
Commissioner of Public Lands
310 Old Santa Fe Trail
Santa Fe NM 87505*

PS Form 3800, January 2005

US Postal Service

Certified Mail Receipt

2