

Mr. Joel Martin
Operations Manager
NADEL AND GUSSMAN PERMIAN, LLC
601 N. Marienfeld
Suite 508
Midland, TX 79701

NM OIL CONSERVATION

ARTESIA DISTRICT

December 22, 2014

JAN 20 2015

Mr. Mike Bratcher
NEW MEXICO OIL CONSERVATION DIVISION
District 2
811 South First Street
Artesia, New Mexico 88210

RECEIVED

Re: Carrington State No. 7 Corrective Action Plan and Final Remediation Report

API No.: 30-015-39250

U/L K Sec 12 T17S R28E 1650' FSL and 2310' FWL of Eddy County, New Mexico

Dear Mr. Bratcher:

Please find enclosed Nadel & Gussman Permian's (NGP) Corrective Action Plan (CAP) and Final Remediation Report (FRR) which is being submitted as a single document due to the timing of regulatory compliance measures. Also, submitted is the updated and final report information for the Final C-141.

On October 8, 2014, Nadel and Gussman Permian, LLC (NGP) received an email from the New Mexico Oil Conservation Division (NMOCD) notifying them that the January 17, 2012 discharge on the Carrington State No. 7 required additional remediation and paperwork to satisfy the NMOCD requirements. Based on this request, NGP returned to the site to do additional cleanup.

The target area was delineated through sampling which resulted in approximately 15 yards of material being excavated and removed to disposal. This area was then resampled to verify compliance with the NMOCD requirements. These sample analyticals are attached.

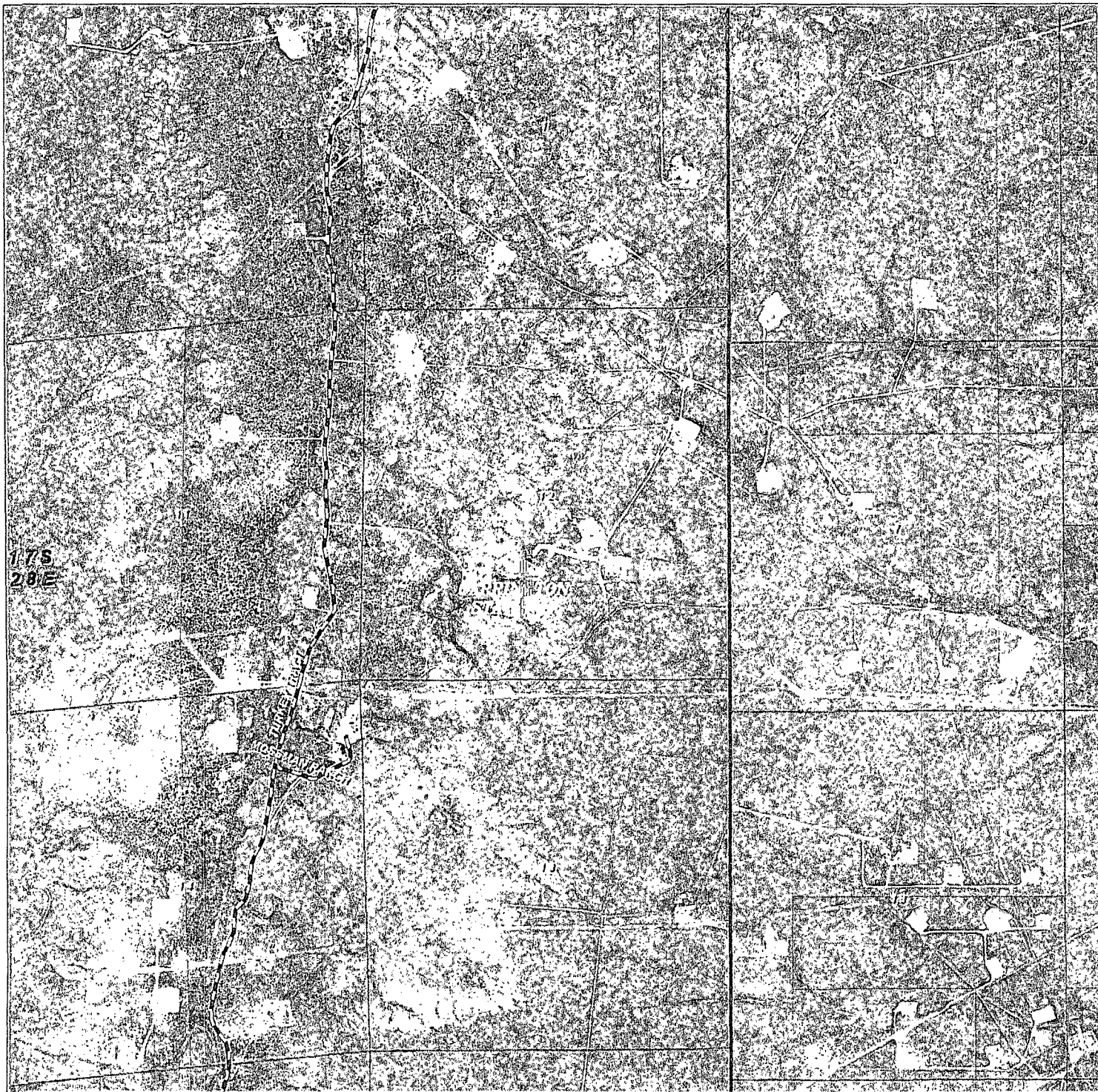
Following notification to the NMOCD, this area was then backfilled with caliche remaining commensurate with the topographic relief of the drilling pad. Supporting photos and the accompanying sampling results will show that compliance has been met for these areas.

Should you have questions, please call (432-425-7386).

Sincerely,

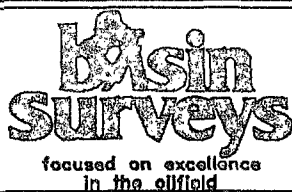

Joel Martin
Operations Manager

Enclosures: Photos, Map, Laboratory Analytical results



CARRINGTON STATE #7

Located 1650' FSL and 2310' FWL
Section 12, Township 17 South, Range 28 East,
N.M.P.M., Eddy County, New Mexico.



P.O. Box 1786
1120 N. West County Rd.
Hobbs, New Mexico 88241
(575) 393-7318 - Office
(575) 392-2206 - Fax
basinsurveys.com

W.O. Number: JMS 24830

Scale: 1" = 2000'

YELLOW TINT - USA LAND
BLUE TINT - STATE LAND
NATURAL COLOR - FEE LAND

NADEL &
GUSSMAN
PERMIAN

Seed Mixture for LPC Sand/Shinnery Sites

The holder shall seed all disturbed areas with the seed mixture listed below. The seed mixture shall be planted in the amounts specified in pounds of pure live seed (PLS)* per acre. There shall be no primary or secondary noxious weeds in the seed mixture. Seed will be tested and the viability testing of seed will be done in accordance with State law(s) and within nine (9) months prior to purchase. Commercial seed will be either certified or registered seed. The seed container will be tagged in accordance with State law(s) and available for inspection by the authorized officer.

Seed will be planted using a drill equipped with a depth regulator to ensure proper depth of planting where drilling is possible. The seed mixture will be evenly and uniformly planted over the disturbed area (smaller/heavier seeds have a tendency to drop the bottom of the drill and are planted first). The holder shall take appropriate measures to ensure this does not occur. Where drilling is not possible, seed will be broadcast and the area shall be raked or chained to cover the seed. When broadcasting the seed, the pounds per acre are to be doubled. The seeding will be repeated until a satisfactory stand is established as determined by the authorized officer. Evaluation of growth will not be made before completion of at least one full growing season after seeding.

Species to be planted in pounds of pure live seed* per acre:

<u>Species</u>	<u>lb/acre</u>
Plains Bristlegrass	5lbs/A
Sand Bluestem	5lbs/A
Little Bluestem	3lbs/A
Big Bluestem	6lbs/A
Plains Coreopsis	2lbs/A
Sand Dropseed	1lbs/A

**Four-winged Saltbush 5lbs/A

* This can be used around well pads and other areas where caliche cannot be removed.

*Pounds of pure live seed:

Pounds of seed x percent purity x percent germination = pounds pure live seed