

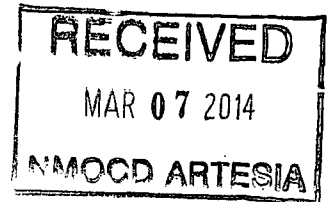
Basin Environmental Service Technologies, LLC

3100 Plains Highway
P. O. Box 301
Lovington, New Mexico 88260
jwlowry@basinenv.com

Office: (575) 396-2378 Fax: (575) 396-1429



REMEDIATION SUMMARY AND SITE CLOSURE REQUEST



**BOPCO, LP
POKER LAKE UNIT #341H
Eddy County, New Mexico
Unit Letter "D" (NW/NW), Section 23, Township 24 South, Range 30 East
Latitude 32.208112° North, Longitude 103.856698° West
NMOCD Reference #s 2RP-1926**

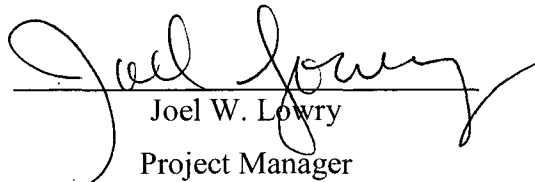
Prepared For:

**BOPCO, LP
522 W. Mermod, Suite 704
Carlsbad, New Mexico 88220**

Prepared By:

**Basin Environmental Service Technologies, LLC
3100 Plains Highway
Lovington, New Mexico 88260**

February 2014


Joel W. Lowry
Project Manager

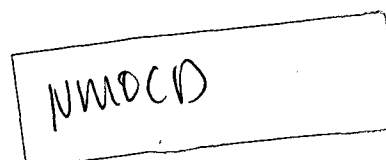


TABLE OF CONTENTS

1.0 INTRODUCTION & BACKGROUND INFORMATION.....	1
2.0 NMOCD SITE CLASSIFICATION.....	1
3.0 SUMMARY OF SOIL REMEDIATION ACTIVITIES.....	2
4.0 QA/QC PROCEDURES.....	4
4.1 Soil Sampling.....	4
4.2 Decontamination of Equipment.....	5
4.3 Laboratory Protocol.....	5
5.0 SITE CLOSURE REQUEST.....	5
6.0 LIMITATIONS.....	6
7.0 DISTRIBUTION.....	7

FIGURES

Figure 1 – Site Location Map

Figure 2 – Site & Sample Location Map (Pasture)

Figure 3 – Site & Sample Location Map (Well Pad)

TABLES

Table 1 – Concentrations of Benzene, BTEX, TPH & Chloride in Soil

APPENDICES

Appendix A – Release Notification and Corrective Action (Form C-141)

Appendix B – Photographs

Appendix C – Laboratory Analytical Reports

1.0 INTRODUCTION & BACKGROUND INFORMATION

Basin Environmental Service Technologies, LLC (Basin), on behalf of BOPCO, LP (BOPCO), has prepared this *Remediation Summary and Site Closure Request* for the release site known as Poker Lake Unit (PLU) #341H. The legal description of the release site is Unit Letter "D" (NW/NW), Section 23, Township 24 South, Range 30 East, in Eddy County, New Mexico. The geographic coordinates of the release site are 32.208112° North latitude and 103.856698° West longitude. The property affected by the release is owned by the United States Department of the Interior and administered by the Bureau of Land Management (BLM) A "Site Location Map" is provided as Figure 1.

On September 6, 2013, Quality Transport (QT) discovered a release had occurred at the PLU #341H Well Pad. A produced water treatment process they were overseeing on the PLU #341H well pad for a "frac" job on the PLU Big Sinks 15-24-30 USA #1H, overflowed undetected and breached the plastic-lined containment on the back side of the "frac tanks". BOPCO reported the release to the New Mexico Oil Conservation Division (NMOCD) Artesia District Office on September 10, 2013, immediately upon being informed of the release. The "Release Notification and Corrective Action" (Form C-141) indicated greater than fifty barrels (>50 bbls) of produced water was released, with no recovery. The initial Form C-141 indicated the release affected approximately nineteen thousand, four hundred square feet (19,400 ft²) of well pad and eighteen thousand, two hundred and fifty square feet (18,250 ft²) of pasture. The Form C-141 is provided as Appendix A. General photographs of the release site are provided as Appendix B.

Prior to beginning excavation activities, Boone Archaeological Services of New Mexico (Boone) conducted a cultural survey of the affected area. Boone noted that remediation activities could affect registered Archaeological Site LA 147531.

On September 23, 2013, BLM representatives gave permission to begin remediation activities. Flagging was positioned to prevent entrance into the protected area. No excavation activities were permitted beyond this point without on-site observation.

2.0 NMOCD SITE CLASSIFICATION

A search of the New Mexico Water Rights Reporting System (NMWRRS) database maintained by the New Mexico Office of the State Engineer (NMOSE) indicated the average depth to groundwater for Section 23, Township 24 South, Range 30 East is approximately four hundred feet (400') below ground surface (bgs). Based on the NMOCD ranking system, zero (0) points will be assigned to the site as a result of this criterion.

A search of the NMWRRS database indicated there are no water wells within one thousand feet (1,000') of the release. Based on the NMOCD ranking system, zero (0) points will be assigned to the site as a result of this criterion.

There are no surface water bodies within one thousand feet (1,000') of the release. Based on the NMOCD ranking system, zero (0) points will be assigned to the site as a result of this criterion.

NMOCD guidelines indicate the PLU #341H release site has an initial ranking score of zero (0) points. The soil remediation levels for a site with a ranking score of zero (0) points are as follows:

- Benzene – 10 mg/Kg (ppm)
- Benzene, ethylbenzene, toluene and xylene (BTEX) – 50 mg/Kg (ppm)
- Total petroleum hydrocarbon (TPH) – 5,000 mg/Kg (ppm)

The New Mexico Administrative Code (NMAC) does not currently specify a remediation level for chloride concentrations in soil. Chloride remediation levels are set by the NMOCD on a site-specific basis.

3.0 SUMMARY OF SOIL REMEDIATION ACTIVITIES

On September 23, 2013, QT began excavation activities at the release site. Visibly impacted material was excavated from the affected pasture and stockpiled on-site, pending final disposition. Please reference Figure 2, “Site & Sample Location Map (Pasture)”.

On November 21, 2013, Basin assumed remediation responsibilities at the PLU #341H release site. Twenty-seven (27) soil samples (SP #1 through SP #27) were collected from the floor and sidewalls of the existing excavation and submitted to Cardinal Laboratories, of Hobbs, New Mexico, for analysis of chloride concentrations by EPA Method 4500 Cl-B. Laboratory analytical results indicate chloride concentrations ranged from less than the laboratory method detection limit (MDL) for soil samples SP #2-SP#8, SP#11, SP #12, SP #14-SP #16 and SP #19 to 10,300 ppm for soil sample SP #23. Soil samples collected from the excavation floor (SP #3, SP #6, SP #9, SP #10, SP #13, SP #14, SP #17, SP #18, SP #20, SP #22 and SP #25) were also analyzed for concentrations of BTEX using EPA Method SW-846-8021b and TPH using EPA Method SW-846 8015M. Laboratory analytical results indicated BTEX and TPH concentrations were less than the appropriate laboratory MDL in each of the submitted soil samples. A summary of “Concentrations of Benzene, BTEX, TPH and Chloride in Soil” is provided in Table 1. Laboratory analytical reports are provided as Appendix C.

On December 2, 2013, Basin began excavation activities at the release site. The floor and sidewalls of the existing excavation were advanced until field tests suggested concentrations of BTEX, TPH and chloride were less than NMOCD Regulatory Standards. Excavated material was stockpiled on-site, pending final disposition.

On December 3, 2013, seven (7) confirmation soil samples (SP #10b, SP #13b, SP #22b, SP #24b, SP #25b, SP #26b and SP #27b) were collected from the floor and sidewalls of the excavation and submitted to the laboratory for analysis of chloride concentrations. Laboratory analytical results indicated chloride concentrations ranged from less than the laboratory MDL for soil samples SP #10b and SP #13b to 528 ppm for soil sample SP #25b. Soil sample #13b was also analyzed for concentrations of TPH, which was determined to be less than the laboratory MDL.

On December 4, 2013, one (1) confirmation soil sample (SP #17b) was collected from the floor of the excavation and submitted to the laboratory for analysis of chloride concentrations.

Laboratory analytical results indicated the chloride concentration was 608 ppm. Chloride concentrations were below NMOCD Regulatory Standards in soil sample SP #17b.

Upon receiving laboratory analytical results from confirmation soil samples, the excavated area in the pasture was backfilled with locally purchased, non-impacted material. Following backfilling, the site was contoured to match the surrounding topography.

On December 16, 2013, Basin began excavation activities on the impacted well pad. The floor and sidewalls of the excavation were advanced until field tests suggested concentrations of BTEX, TPH and chloride were less than NMOCD Regulatory Standards. Excavated material was stockpiled on-site, pending final disposition. Please reference Figure 3, "Site & Sample Location Map (Well Pad)".

On December 17, 2013, eleven (11) confirmation soil samples (N SW #1 through N SW #3, N SW #4, S SW #2, Pad Floor @ 1', Pad SE SW, Floor #1 @ 3.5', Floor #3 @ 1', Floor #4 @ 1' and ESW #1) were collected from the floor and sidewalls of the excavation and submitted to the laboratory for analysis of chloride concentrations. Laboratory analytical results indicated chloride concentrations ranged from 32.0 ppm for soil sample NSW #4 to 832 ppm for soil sample S SW #2. Soil samples Pad Floor @ 1', Floor #1 @ 3.5' and Floor #3 @ 1' were also analyzed for concentrations of BTEX and TPH, which were determined to be less than the appropriate laboratory MDL in each of the submitted soil samples. Chloride, BTEX and TPH concentrations were below NMOCD Regulatory Standards in each of the submitted soil samples. The excavation was advanced toward the south and the west.

On December 19, 2013, three (3) confirmation soil samples (Sect. #1 WSW, Sect. #1 SSW and ESW #2) were collected from sidewalls of the excavation and submitted to the laboratory for analysis of chloride concentrations. Laboratory analytical results indicated chloride concentrations ranged from 80.0 ppm for soil sample Sect. #1 WSW to 272 ppm for soil sample ESW #2. Chloride concentrations were below NMOCD Regulatory Standards in each of the submitted soil samples. The excavation was advanced toward the west.

On December 23, 2013, two (2) confirmation soil samples (West Floor and South East Floor) were collected from floor of the excavation and submitted to the laboratory for analysis of chloride and TPH concentrations. Laboratory analytical results indicated chloride concentrations ranged from 192 ppm for soil sample South East Floor to 432 ppm for soil sample West Floor. Analytical results indicated TPH concentrations were less than the laboratory MDL in each of the submitted soil samples. Chloride and TPH concentrations were below NMOCD Regulatory Standards in each of the submitted soil samples. The excavation was advanced toward the west.

On December 30, 2013, three (3) confirmation soil samples (Sec. 8 WSW #1 through Sec. 8 WSW #3) were collected from sidewalls of the excavation and submitted to the laboratory for analysis of chloride concentrations. Laboratory analytical results indicated chloride concentrations ranged from 320 ppm for soil samples Sec. 8 WSW #1 and Sec. 8 WSW #3 to 480 ppm for soil sample Sec. 8 WSW #2. Chloride concentrations were below NMOCD Regulatory Standards in each of the submitted soil samples.

On January 3, 2014, four (4) confirmation soil samples (Sec. 8 NSW, Sec. 8 SSW, Sec. 7 NSW and Sec. 7 SSW) were collected from sidewalls of the excavation and submitted to the laboratory

for analysis of chloride concentrations. Laboratory analytical results indicated chloride concentrations ranged from 16.0 ppm for soil sample Sec. 8 NSW to 528 ppm for soil sample Sec. 7 SSW. Chloride concentrations were below NMOCD Regulatory Standards in each of the submitted soil samples.

On January 7, 2014, six (6) confirmation soil samples (Sec. 7 Floor A through Sec. 7 Floor C, Sec. 8 Floor A through Sec. 8 Floor C) were collected from the floor of the excavation and submitted to the laboratory for analysis of chloride concentrations. Laboratory analytical results indicated chloride concentrations ranged from 352 ppm for soil sample Sec. 8 Floor B to 960 ppm for soil sample Sec. 8 Floor A. Soil samples Sec. 7 Floor B and Sec. 8 Floor B were also analyzed for concentrations of BTEX and TPH, which were determined to be less than the appropriate laboratory MDL. Chloride, BTEX and TPH concentrations were below NMOCD Regulatory Standards in each of the submitted soil samples. The excavation was advanced toward the east.

On January 10, 2014, six (6) confirmation soil samples (Sec. 6 NSW, Sec. 6 Floor B, Sec. 6 SSW, Sec. 5 NSW, Sec. 5 Floor A and Sec. 5 SSW) were collected from the floor and sidewalls of the excavation and submitted to the laboratory for analysis of chloride concentrations. Laboratory analytical results indicated chloride concentrations ranged from 48.0 ppm for soil samples Sec. 5 NSW and Sec. 5 SSW to 944 ppm for soil sample Sec. 6 Floor B. Chloride concentrations were below NMOCD Regulatory Standards in each of the submitted soil samples.

Between November 27, 2013 and January 14, 2014, approximately six thousand, and forty cubic yards (6,040 yd³) of impacted material was transported to Lea Land, LLC (NMOCD Permit #WM-01-035) for disposal. The final dimensions of the excavated area within the pasture were approximately fifteen (15) to eighty feet (80') in width, three hundred and fifty feet (350') in length and one (1) to two feet (2') in depth. The final dimensions of the excavated area on the PLU #341H well pad were approximately sixty (60) to one hundred feet (100') in width, three hundred and eighty feet (380') in length and one (1) to seven feet (7') in depth.

On January 14, 2014, upon receiving laboratory analytical data from confirmation soil samples, the excavated areas were backfilled with locally purchased, non-impacted material. Following backfilling, the caliche well pad was repaired, and areas affected by the remediation activities were contoured to fit the surrounding topography.

4.0 QA/QC PROCEDURES

4.1 Soil Sampling

Soil samples were delivered to Cardinal Laboratories, Inc., in Hobbs, New Mexico, for BTEX, TPH and/or chloride analyses using the methods described below:

- BTEX concentrations in accordance with EPA Method SW-846 8021b
- TPH concentrations in accordance with EPA Method SW-846 8015M
- Chloride concentrations in accordance with EPA Method 4500 Cl-B

4.2 Decontamination of Equipment

Cleaning of the sampling equipment was the responsibility of the environmental technician. Prior to use, and between each sample, the sampling equipment was cleaned with Liqui-Nox® detergent and rinsed with distilled water.

4.3 Laboratory Protocol

The laboratory was responsible for proper QA/QC procedures after signing the chain-of-custody form(s). These procedures were either transmitted with the laboratory reports or are on file at the laboratory.

5.0 SITE CLOSURE REQUEST

Soil samples collected from the floors and sidewalls of the PLU #341H excavations were analyzed by an NMOCD-approved laboratory. Laboratory analytical results indicated concentrations of BTEX, TPH and chloride were below NMOCD Regulatory Remediation Action Levels established for the site. Based on these laboratory analytical results, Basin recommends BOPCO provide the NMOCD Artesia District Office and the BLM a copy of this *Remediation Summary and Site Closure Request* and request the NMOCD grant site closure to the PLU #341H release site.

6.0 LIMITATIONS

Basin Environmental Service Technologies, LLC, has prepared this *Remediation Summary and Site Closure Request* to the best of its ability. No other warranty, expressed or implied, is made or intended. Basin has examined and relied upon documents referenced in the report and on oral statements made by certain individuals. Basin has not conducted an independent examination of the facts contained in referenced materials and statements. Basin has presumed the genuineness of these documents and statements and that the information provided therein is true and accurate. Basin has prepared this report in a professional manner, using the degree of skill and care exercised by similar environmental consultants. Basin notes that the facts and conditions referenced in this report may change over time, and the conclusions and recommendations set forth herein are applicable only to the facts and conditions as described at the time of this report.

This report has been prepared for the benefit of BOPCO, LP. The information contained in this report, including all exhibits and attachments, may not be used by any other party without the express consent of Basin Environmental Service Technologies, LLC, and/or BOPCO, LP.

7.0 DISTRIBUTION:

- Copy 1: Mike Bratcher
New Mexico Energy, Minerals and Natural Resources Department
Oil Conservation Division (District 2)
1301 E. Grand Avenue
Artesia, NM 88210
- Copy 2: James Amos
Bureau of Land Management
602 E. Greene Street
Carlsbad, New Mexico 88220
- Copy 3: Tony Savoie
BOPCO, LP
522 W. Mermod, Suite 704
Carlsbad, NM 88220
- Copy 4: Basin Environmental Service Technologies, LLC
P.O. Box 301
Lovington, NM 88260

FIGURES

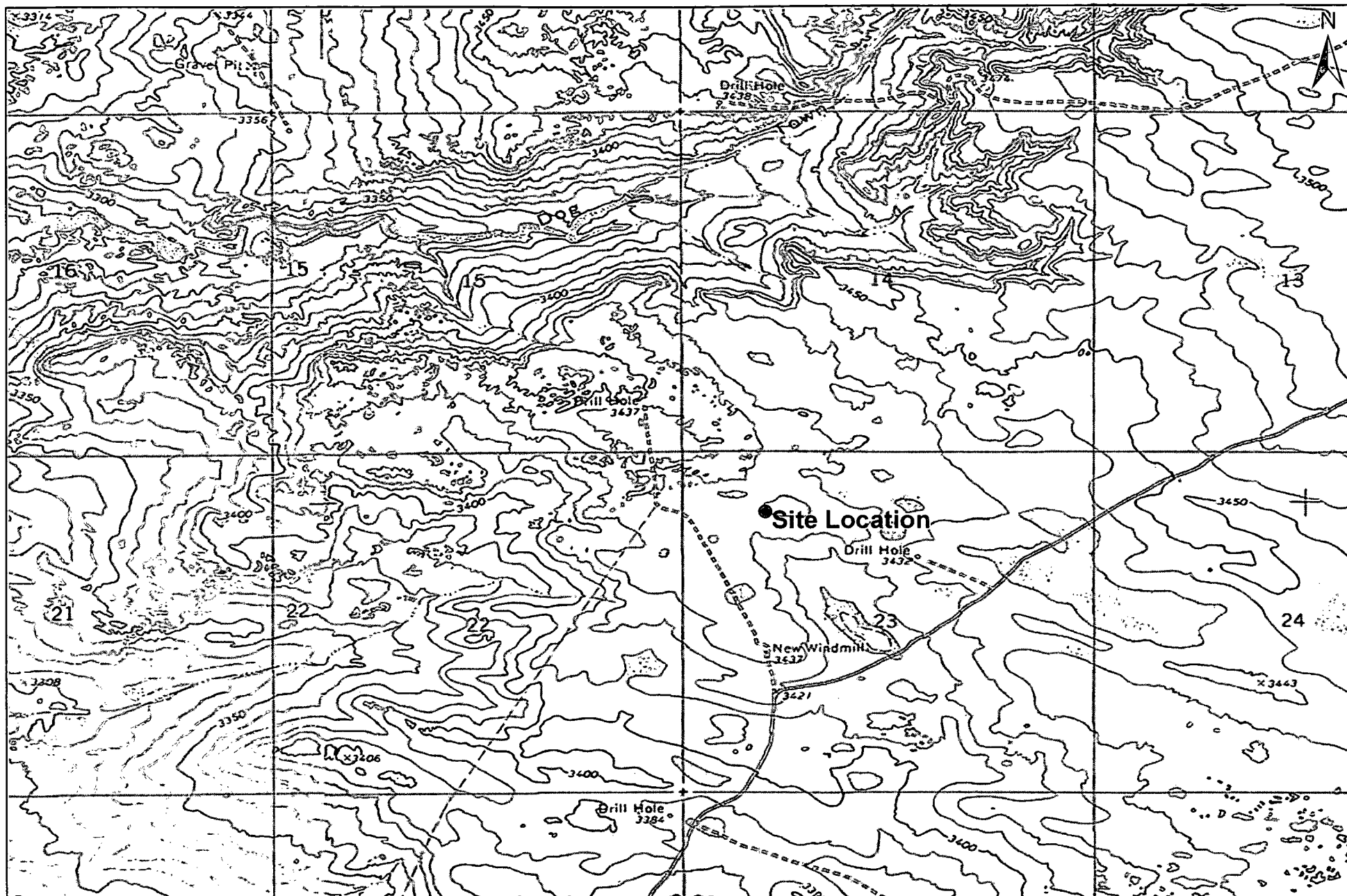
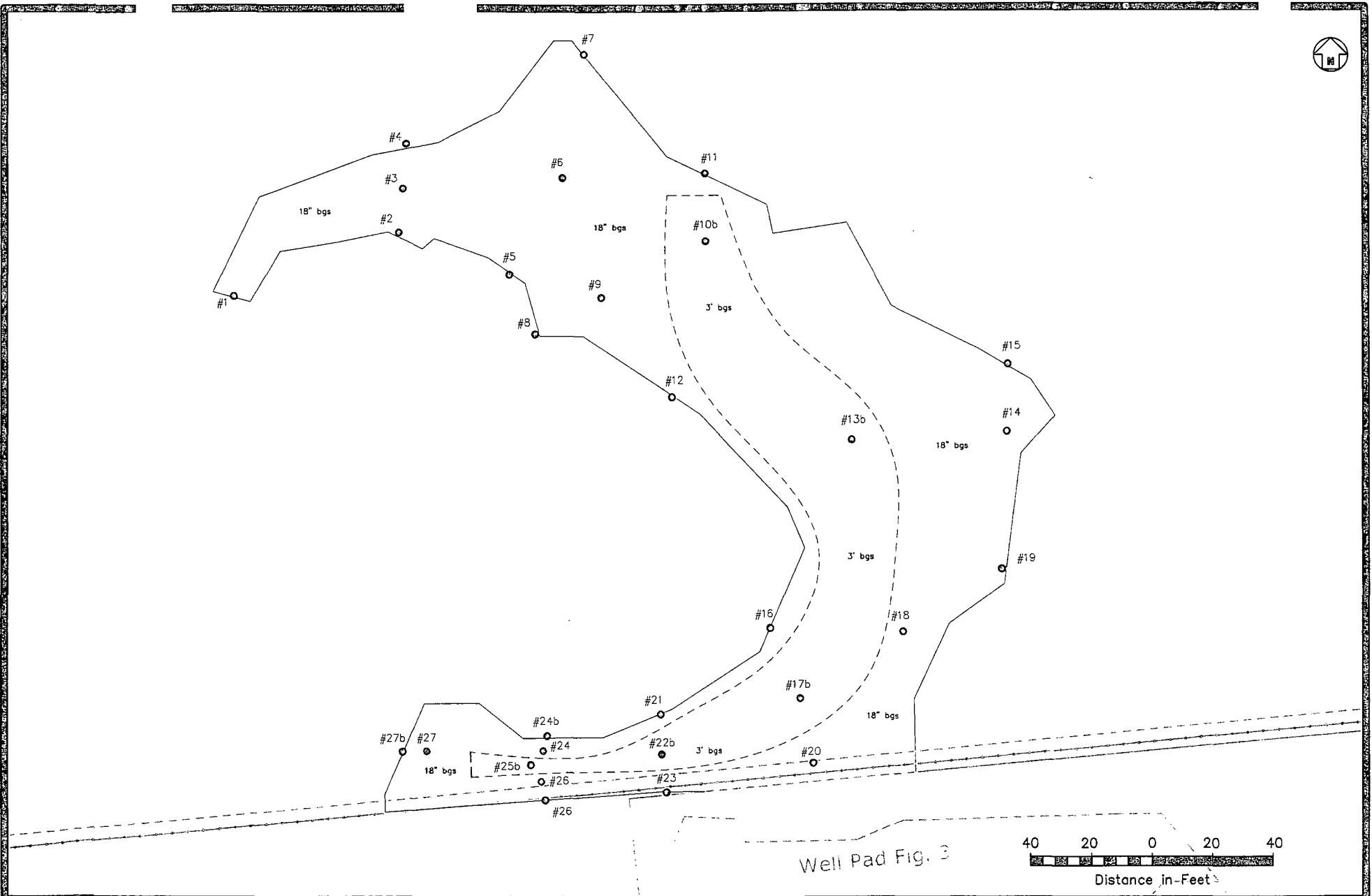


Figure 2
Site Location Map
BOPCO, LP
Poker Lake Unit 341H
Eddy County, New Mexico
NMOCD Reference #: 2RP-1926



Basin Environmental Service Technologies, LLC
 3100 Plains Hwy.
 Lovington, NM 88260

Drawn By: BJA	Checked By: BRB
January 17, 2014	Scale: 1" = 2,000'



Legend:

- Excavation Extent
- Fence Line
- Pipeline
- Sample Location

Figure 2

Site & Sample Location Map (Pasture)
BOPCO, L.P.
PLU #341H Frac Pad
Eddy County, New Mexico

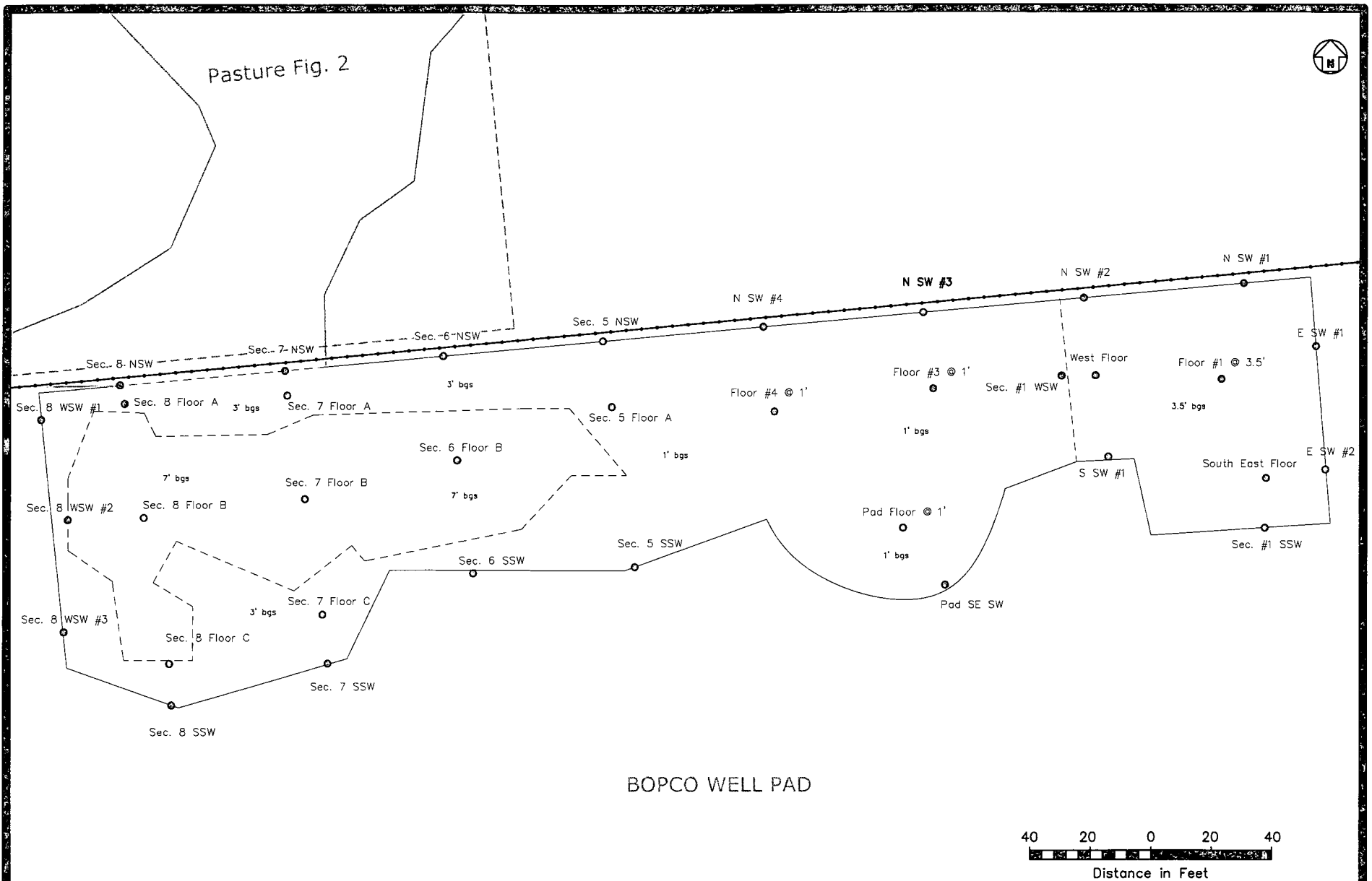
Basin Environmental Services

Prep By: JWL

Checked By: BJA

January 11, 2013

Scale 1"=40'



Legend:

- Excavation Extent
- Fence Line
- Pipeline
- Sample Location

Figure 3
 Site & Sample Location Map (Well Pad)
 BOPCO, L.P.
 PLU #341H Frac Pad
 Eddy County, New Mexico

Basin Environmental Services

Prep By: JWL	Checked By: BJA
January 11, 2013	Scale 1"=40'

TABLES

TABLE 1

CONCENTRATIONS OF BENZENE, BTEX, TPH & CHLORIDES IN SOIL

BOPCO, LP
 PLU #341 H FRAC PAD
 EDDY COUNTY, NEW MEXICO

SAMPLE LOCATION	SAMPLE DEPTH (BGS)	SAMPLE DATE	SOIL STATUS	METHOD: EPA SW 846-8021B, 5030					METHOD: 8015M			TOTAL TPH C ₈ -C ₃₅ (mg/Kg)	4500 Cl-B CHLORIDE (mg/Kg)
				BENZENE (mg/Kg)	TOLUENE (mg/Kg)	ETHYL-BENZENE (mg/Kg)	TOTAL XYLENES (mg/Kg)	TOTAL BTEX (mg/Kg)	GRO C ₆ -C ₁₂ (mg/Kg)	DRO C ₁₂ -C ₂₈ (mg/Kg)	ORO C ₂₈ -C ₃₅ (mg/Kg)		
SP #1	1'	11/21/2013	In-Situ	-	-	-	-	-	-	-	-	-	96.0
SP #2	1'	11/21/2013	In-Situ	-	-	-	-	-	-	-	-	-	<16.0
SP #3	18"	11/21/2013	In-Situ	<0.050	<0.050	<0.050	<0.150	<0.300	<10.0	<10.0	<10.0	<10.0	<16.0
SP #4	1'	11/21/2013	In-Situ	-	-	-	-	-	-	-	-	-	<16.0
SP #5	1'	11/21/2013	In-Situ	-	-	-	-	-	-	-	-	-	<16.0
SP #6	18"	11/21/2013	In-Situ	<0.050	<0.050	<0.050	<0.150	<0.300	<10.0	<10.0	<10.0	<10.0	<16.0
SP #7	1'	11/21/2013	In-Situ	-	-	-	-	-	-	-	-	-	<16.0
SP #8	1'	11/21/2013	In-Situ	-	-	-	-	-	-	-	-	-	<16.0
SP #9	18"	11/21/2013	In-Situ	<0.050	<0.050	<0.050	<0.150	<0.300	<10.0	<10.0	<10.0	<10.0	304
SP #10	18"	11/21/2013	In-Situ	<0.050	<0.050	<0.050	<0.150	<0.300	<10.0	<10.0	<10.0	<10.0	1,790
SP #11	1'	11/21/2013	In-Situ	-	-	-	-	-	-	-	-	-	<16.0
SP #12	1'	11/21/2013	In-Situ	-	-	-	-	-	-	-	-	-	<16.0
SP #13	18"	11/21/2013	In-Situ	<0.050	<0.050	<0.050	<0.150	<0.300	<10.0	<10.0	<10.0	<10.0	6,080
SP #14	18"	11/21/2013	In-Situ	<0.050	<0.050	<0.050	<0.150	<0.300	<10.0	<10.0	<10.0	<10.0	<16.0
SP #15	1'	11/21/2013	In-Situ	-	-	-	-	-	-	-	-	-	<16.0
SP #16	1'	11/21/2013	In-Situ	-	-	-	-	-	-	-	-	-	<16.0
SP #17	18"	11/21/2013	In-Situ	<0.050	<0.050	<0.050	<0.150	<0.300	<10.0	<10.0	<10.0	<10.0	9,200
SP #18	18"	11/21/2013	In-Situ	<0.050	<0.050	<0.050	<0.150	<0.300	<10.0	<10.0	<10.0	<10.0	80.0
SP #19	1'	11/21/2013	In-Situ	-	-	-	-	-	-	-	-	-	<16.0
SP #20	18"	11/21/2013	In-Situ	<0.050	<0.050	<0.050	<0.150	<0.300	<10.0	<10.0	<10.0	<10.0	768
SP #21	1'	11/21/2013	In-Situ	-	-	-	-	-	-	-	-	-	176
SP #22	18"	11/21/2013	In-Situ	<0.050	<0.050	<0.050	<0.150	<0.300	<10.0	<10.0	<10.0	<10.0	3,400
SP #23	1'	11/21/2013	In-Situ	-	-	-	-	-	-	-	-	-	10,300
SP #24	1'	11/21/2013	In-Situ	-	-	-	-	-	-	-	-	-	5,360
SP #25	18"	11/21/2013	In-Situ	<0.050	<0.050	<0.050	<0.150	<0.300	<10.0	<10.0	<10.0	<10.0	2,640
SP #26	1'	11/21/2013	In-Situ	-	-	-	-	-	-	-	-	-	1,920
SP #27	1'	11/21/2013	In-Situ	-	-	-	-	-	-	-	-	-	8,930
SP #10b	2'	12/3/2013	In-Situ	-	-	-	-	-	-	-	-	-	<16.0
SP #13b	2'	12/3/2013	In-Situ	<0.050	<0.050	<0.050	<0.150	<0.300	<10.0	<10.0	<10.0	<10.0	<16.0
SP #22b	2'	12/3/2013	In-Situ	-	-	-	-	-	-	-	-	-	368
SP #24b	1'	12/3/2013	In-Situ	-	-	-	-	-	-	-	-	-	416
SP #25b	2'	12/3/2013	In-Situ	-	-	-	-	-	-	-	-	-	528
SP #26b	1'	12/3/2013	In-Situ	-	-	-	-	-	-	-	-	-	32
SP #27b	1'	12/3/2013	In-Situ	-	-	-	-	-	-	-	-	-	48
SP #17b	2'	12/4/2013	In-Situ	-	-	-	-	-	-	-	-	-	608
N SW #1	1'	12/17/2013	In-Situ	-	-	-	-	-	-	-	-	-	176
N SW #2	1'	12/17/2013	In-Situ	-	-	-	-	-	-	-	-	-	352
N SW #3	1'	12/17/2013	In-Situ	-	-	-	-	-	-	-	-	-	48.0
N SW #4	1'	12/17/2013	In-Situ	-	-	-	-	-	-	-	-	-	32.0
S SW #2	1'	12/17/2013	In-Situ	-	-	-	-	-	-	-	-	-	832
Pad Floor @ 1'	1'	12/17/2013	In-Situ	<0.050	<0.050	<0.050	<0.150	<0.300	<10.0	<10.0	<10.0	<10.0	768
Pad SE SW	6"	12/17/2013	In-Situ	-	-	-	-	-	-	-	-	-	544
Floor #1 @ 3.5	3.5'	12/17/2013	In-Situ	<0.050	<0.050	<0.050	<0.150	<0.300	<10.0	<10.0	<10.0	<10.0	256
Floor #3 @ 1'	1'	12/17/2013	In-Situ	<0.050	<0.050	<0.050	<0.150	<0.300	<10.0	<10.0	<10.0	<10.0	352
Floor #4 @ 1'	1'	12/17/2013	In-Situ	-	-	-	-	-	-	-	-	-	592
ESW #1	1'	12/17/2013	In-Situ	-	-	-	-	-	-	-	-	-	208
Sect. #1 WSW	1'	12/19/2013	In-Situ	-	-	-	-	-	-	-	-	-	80.0
Sect. #1 SSW	1'	12/19/2013	In-Situ	-	-	-	-	-	-	-	-	-	96.0
ESW #2	1'	12/19/2013	In-Situ	-	-	-	-	-	-	-	-	-	272
West Floor	3.5'	12/23/2013	In-Situ	-	-	-	-	-	<10.0	<10.0	<10.0	<10.0	432
South East Floor	3.5'	12/23/2013	In-Situ	-	-	-	-	-	<10.0	<10.0	<10.0	<10.0	192
Sect. 8 WSW #1	2'	12/30/2013	In-Situ	-	-	-	-	-	-	-	-	-	320
Sect. 8 WSW #2	5'	12/30/2013	In-Situ	-	-	-	-	-	-	-	-	-	480
Sect. 8 WSW #3	2'	12/30/2013	In-Situ	-	-	-	-	-	-	-	-	-	320
Sect. 8 NSW	2'	1/3/2014	In-Situ	-	-	-	-	-	-	-	-	-	16.0
Sect. 8 SSW	2'	1/3/2014	In-Situ	-	-	-	-	-	-	-	-	-	192
Sect. 7 NSW	2'	1/3/2014	In-Situ	-	-	-	-	-	-	-	-	-	80.0
Sect. 7 SSW	2'	1/3/2014	In-Situ	-	-	-	-	-	-	-	-	-	528
Sect. 7 Floor A	3'	1/7/2014	In-Situ	-	-	-	-	-	-	-	-	-	608
Sect. 7 Floor B	7'	1/7/2014	In-Situ	<0.050	<0.050	<0.050	<0.150	<0.300	<10.0	<10.0	<10.0	<10.0	640
Sect. 7 Floor C	3'	1/7/2014	In-Situ	-	-	-	-	-	-	-	-	-	944
Sect. 8 Floor A	3'	1/7/2014	In-Situ	-	-	-	-	-	-	-	-	-	960
Sect. 8 Floor B	7'	1/7/2014	In-Situ	<0.050	<0.050	<0.050	<0.150	<0.300	<10.0	<10.0	<10.0	<10.0	352
Sect. 8 Floor C	3'	1/7/2014	In-Situ	-	-	-	-	-	-	-	-	-	464
Sect. 6 NSW	2'	1/10/2014	In-Situ	-	-	-	-	-	-	-	-	-	400
Sect. 6 Floor B	7'	1/10/2014	In-Situ	-	-	-	-	-	-	-	-	-	944
Sect. 6 SSW	2'	1/10/2014	In-Situ	-	-	-	-	-	-	-	-	-	192
Sect. 5 NSW	2'	1/10/2014	In-Situ	-	-	-	-	-	-	-	-	-	48.0
Sect. 5 Floor A	3'	1/10/2014	In-Situ	-	-	-	-	-	-	-	-	-	64.0
Sect. 5 SSW	2'	1/10/2014	In-Situ	-	-	-	-	-	-	-	-	-	48.0
NMOC Criteria				10				50				5,000	1,000

APPENDICES

Appendix A
Release Notification and Corrective Action
(Form C-141)

District I
1625 N. French Dr., Hobbs, NM 88240
District II
811 S. First St., Artesia, NM 88210
District III
1000 Rio Brazos Road, Aztec, NM 87410
District IV
1220 S. St. Francis Dr., Santa Fe, NM 87505

State of New Mexico
Energy Minerals and Natural Resources

Oil Conservation Division
1220 South St. Francis Dr.
Santa Fe, NM 87505

Form C-141
Revised August 8, 2011

Submit 1 Copy to appropriate District Office in
accordance with 19.15.29 NMAC.

Release Notification and Corrective Action

nJMW 1326653 626 OPERATOR ☒ Initial Report ☐ Final Report

Name of Company: BOPCO, L.P. <i>260737</i>	Contact: Tony Savoie
Address: 522 W. Mermod, Suite 704 Carlsbad, N.M. 88220	Telephone No. 575-887-7329
Facility Name: Poker Lake Unit 341H	Facility Type: Exploration and Production

Surface Owner: Federal	Mineral Owner: Federal	API No. 30-015-39486
------------------------	------------------------	----------------------

LOCATION OF RELEASE

Unit Letter D	Section 23	Township 24S	Range 30E	Feet from the 925	North/South Line North	Feet from the 1110	East/West Line West	County Eddy
------------------	---------------	-----------------	--------------	----------------------	---------------------------	-----------------------	------------------------	----------------

Latitude N 32.208112 Longitude W 103.856698

NATURE OF RELEASE

Type of Release: Produced water	Volume of Release: >50 bbls	Volume Recovered: none
Source of Release: Frac tanks	Date and Hour of Occurrence 8/24/31 approximately 5:00 a.m.	Date and Hour of Discovery: By Q.T. 9/6/13 time unknown
Was Immediate Notice Given? <input type="checkbox"/> Yes <input checked="" type="checkbox"/> No <input type="checkbox"/> Not Required	If YES, To Whom? BOPCO notified the NMOCD and BLM immediately upon their discovery of the spill on 9/10/13.	
By Whom? Tony Savoie	Date and Hour 9/11/13 10:00 a.m.	
Was a Watercourse Reached? <input type="checkbox"/> Yes <input checked="" type="checkbox"/> No	If YES, Volume Impacting the Watercourse.	

RECEIVED
SEP 20 2013
NMOCD ARTESIA

If a Watercourse was Impacted, Describe Fully.*

Describe Cause of Problem and Remedial Action Taken.*

A produced water treatment process was set up on the PLU-341 pad for the frac job on PLU-Big Sinks 15-24-30 USA #1H. The frac tanks were placed on plastic lined containment. The tanks overflowed undetected and breached the containment on the back side of the frac tanks, the produced water traveled out onto the well pad and pasture. The cause of the overflow was corrected when it was discovered.

Describe Area Affected and Cleanup Action Taken.*

The spill affected approximately 19,400 sq. ft of well pad and approximately 18,250 sq.ft. of pasture. Soil samples were collected on 9/11/13 to determine the impact area on the pad and pasture area and the vertical extent in the pasture. Quality Trucking will be performing the dirt work, BOPCO and a project manager will be overseeing the remediation activities. The remediation will be done in accordance to the NMOCD and BLM guidelines for the remediation of leaks and spills.

I hereby certify that the information given above is true and complete to the best of my knowledge and understand that pursuant to NMOCD rules and regulations all operators are required to report and/or file certain release notifications and perform corrective actions for releases which may endanger public health or the environment. The acceptance of a C-141 report by the NMOCD marked as "Final Report" does not relieve the operator of liability should their operations have failed to adequately investigate and remediate contamination that pose a threat to ground water, surface water, human health or the environment. In addition, NMOCD acceptance of a C-141 report does not relieve the operator of responsibility for compliance with any other federal, state, or local laws and/or regulations.

OIL CONSERVATION DIVISION

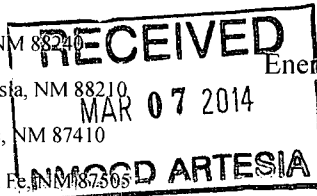
Signature: <i>Tony Savoie</i>	Approved by Environmental Specialist: <i>Mike Brannon</i>	
Printed Name: Tony Savoie	Signed By	
Title: Waste Management and Remediation Specialist	Approval Date: SEP 23 2013	Expiration Date:
E-mail Address: tasavoie@basspet.com	Conditions of Approval: Remediation per OCD Rule & Guidelines, & like approval by BLM. SUBMIT REMEDIATION	Attached <input type="checkbox"/>
Date: 9/20/13	Phone: 432-556-8730	

* Attach Additional Sheets If Necessary

PROPOSAL NO LATER THAN:
October 23, 2013

2RP-1926

District I
1625 N. French Dr., Hobbs, NM 88240
District II
1301 W. Grand Avenue, Artesia, NM 88210
District III
1000 Rio Brazos Road, Aztec, NM 87410
District IV
1220 S. St. Francis Dr., Santa Fe, NM 87505



State of New Mexico
Energy Minerals and Natural Resources

Oil Conservation Division
1220 South St. Francis Dr.
Santa Fe, NM 87505

Form C-141
Revised October 10, 2003

Submit 2 Copies to appropriate
District Office in accordance
with Rule 116 on back
side of form

Release Notification and Corrective Action

OPERATOR

☐ Initial Report

☒ Final Report

Name of Company	BOPCO, LP	Contact	Tony Savoie
Address	522 W. Mermod, Suite 704, Carlsbad, NM 88220	Telephone No.	432-556-8730
Facility Name	Poker Lake Unit 341H 28P-1926	Facility Type	Exploration and Production
Surface Owner	Federal	Mineral Owner	Federal
		Lease No.	30-015-39486

LOCATION OF RELEASE

Unit Letter	Section	Township	Range	Feet from the	North/South Line	Feet from the	East/West Line	County
D	23	24S	30E	925	North	1110	West	Eddy

Latitude 32.208112° North

Longitude 103.856698° West

NATURE OF RELEASE

Type of Release	Produced water	Volume of Release	>50 bbls	Volume Recovered:	none
Source of Release	Frac tanks	Date and Hour of Occurrence	8/24/13 approximately 5:00 a.m.	Date and Hour of Discovery:	By Q.T. 9/6/13
Was Immediate Notice Given?	<input type="checkbox"/> Yes <input checked="" type="checkbox"/> No <input type="checkbox"/> Not Required	If YES, To Whom? BOPCO notified the NMOCD and BLM immediately upon their discovery of the spill on 9/10/13.			
By Whom?	Tony Savoie	Date and Hour	9/11/13 10:00 a.m.		
Was a Watercourse Reached?	<input type="checkbox"/> Yes <input checked="" type="checkbox"/> No	If YES, Volume Impacting the Watercourse.			

If a Watercourse was Impacted, Describe Fully.*

Describe Cause of Problem and Remedial Action Taken.*

A produced water treatment process was set up on the PLU-341 pad for the frac job on the PLU-Big Sinks 15-24-30 USA #1H, The frac tanks were placed on plastic lined containment. The tanks overflowed undetected and breached the containment on the back side of the frac tanks, the produced water traveled out onto the well pad and pasture. The cause of the overflow was corrected when it was discovered.

Describe Area Affected and Cleanup Action Taken.*

The spill affected approximately 19,400 sq. ft. of well pad and approximately 18,250 sq. ft. of pasture. Soil samples were collected on 9/11/13 to determine the impact area on the pad and pasture area and the vertical extent in the pasture. Quality Trucking will be performing the dirt work, BOPCO and a project manager will be overseeing the remediation activities. The remediation will be done in accordance to the NMOCD and BLM guidelines for the remediation of leaks and spills.

Remediation activities conducted at the PLU #341H Remediation Site met the objectives set forth by the NMOCD and BLM. Soil samples collected from the floor and sidewalls of the excavation were analyzed by an NMOCD-approved laboratory which determined concentrations of BTEX, TPH and Chloride were less than NMOCD Regulatory Standards. Between September 23, 2013, and January 14, 2014, approximately 6,040 cy of impacted soil was excavated and transported to an NMOCD-approved disposal facility. **Please reference the attached Basin Environmental Services Technologies Remediation Summary and Site Closure Request for details of remediation activities.**

I hereby certify that the information given above is true and complete to the best of my knowledge and understand that pursuant to NMOCD rules and regulations all operators are required to report and/or file certain release notifications and perform corrective actions for releases, which may endanger public health or the environment. The acceptance of a C-141 report by the NMOCD marked as "Final Report" does not relieve the operator of liability should their operations have failed to adequately investigate and remediate contamination that pose a threat to ground water, surface water, human health or the environment. In addition, NMOCD acceptance of a C-141 report does not relieve the operator of responsibility for compliance with any other federal, state, or local laws and/or regulations.

Signature:	OIL CONSERVATION DIVISION		
Printed Name: Tony Savoie	Approved by District Supervisor:		
Title: Waste Mgmt. & Remediation Specialist	Approval Date:	Expiration Date:	
E-mail Address: TASavoie@BassPet.com	Conditions of Approval:		
Date: 12/6/2011	Phone: (432)556-8730		

Appendix B

Photographs



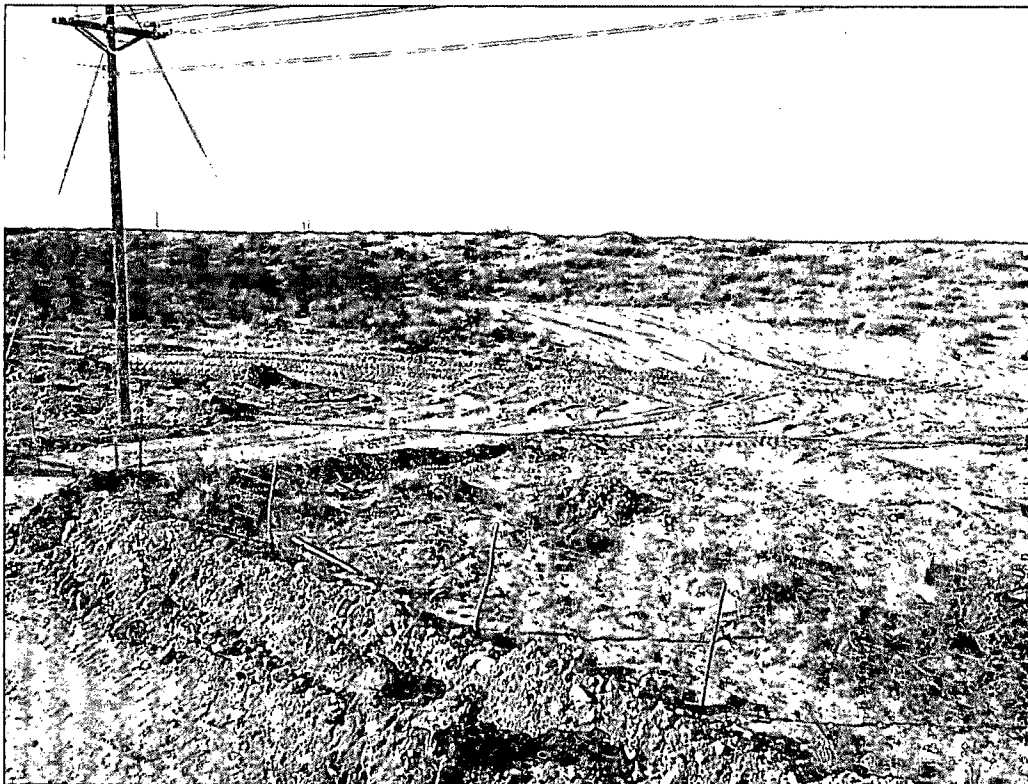
Photograph of surface staining from the initial release at the PLU #341H Release Site.



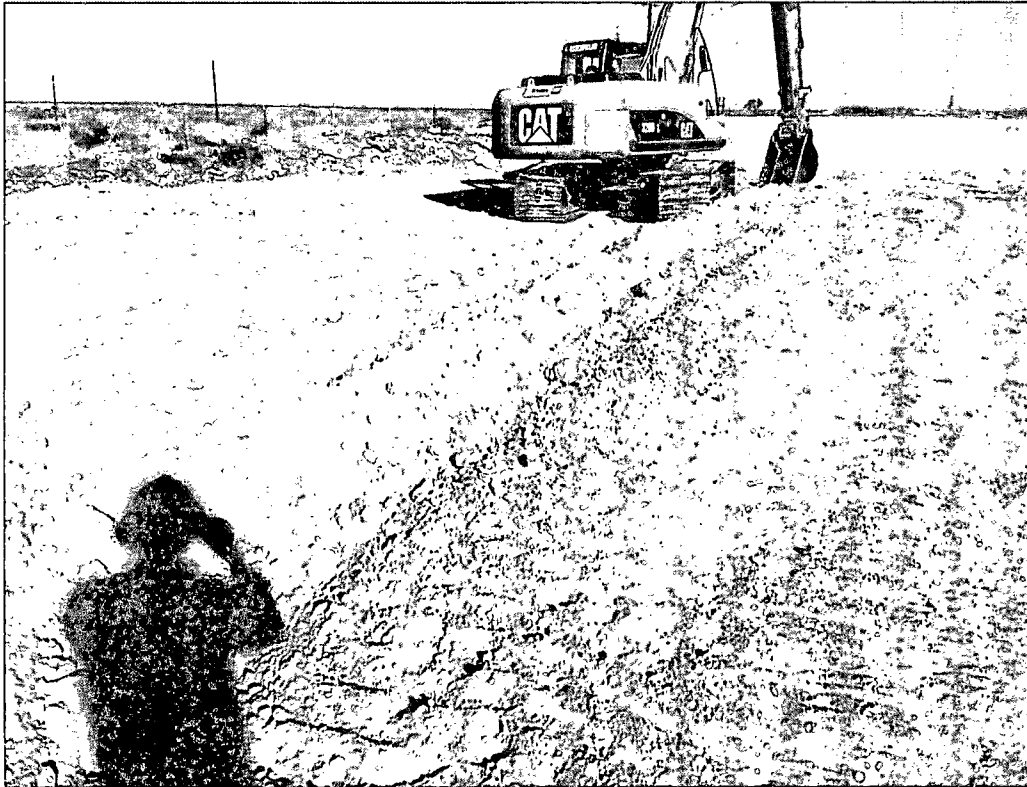
Photograph of surface staining and the impacted pasture area at the PLU #341H Release Site.



Photograph of excavation activities within the impacted pasture area at the PLU #342H Release Site.



Photograph of the pasture area after backfilling activities at the PLU #341H Release Site.



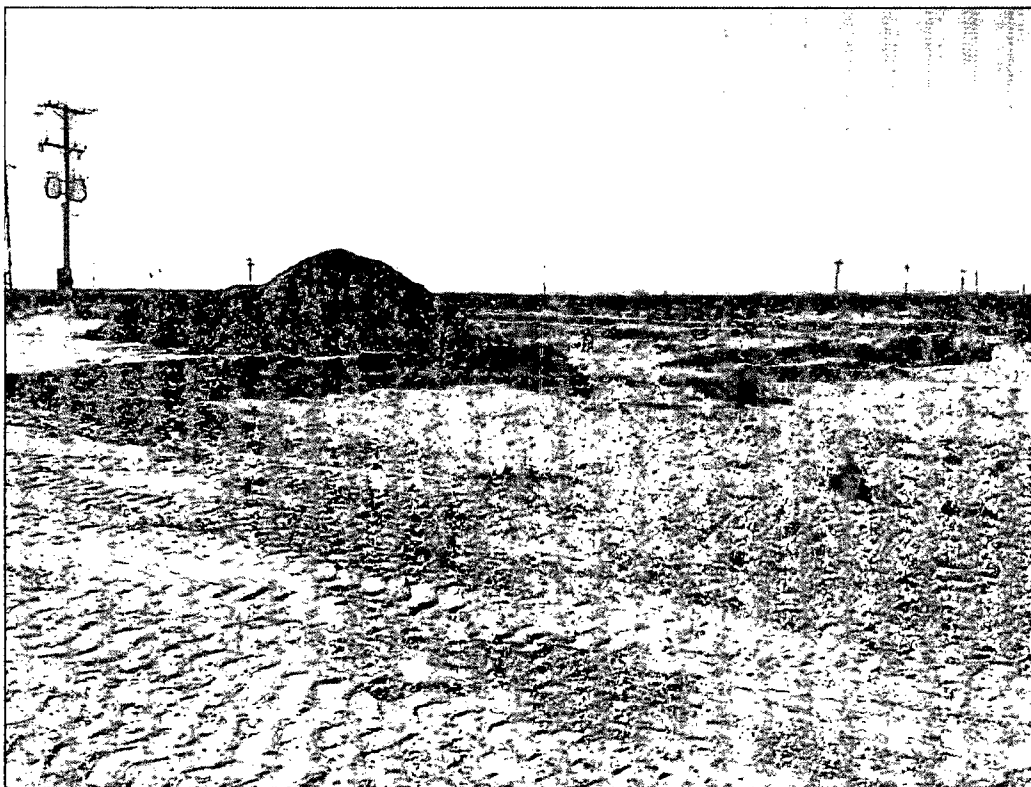
Photograph of excavation activities on the impacted well pad at the PLU #341H Release Site.



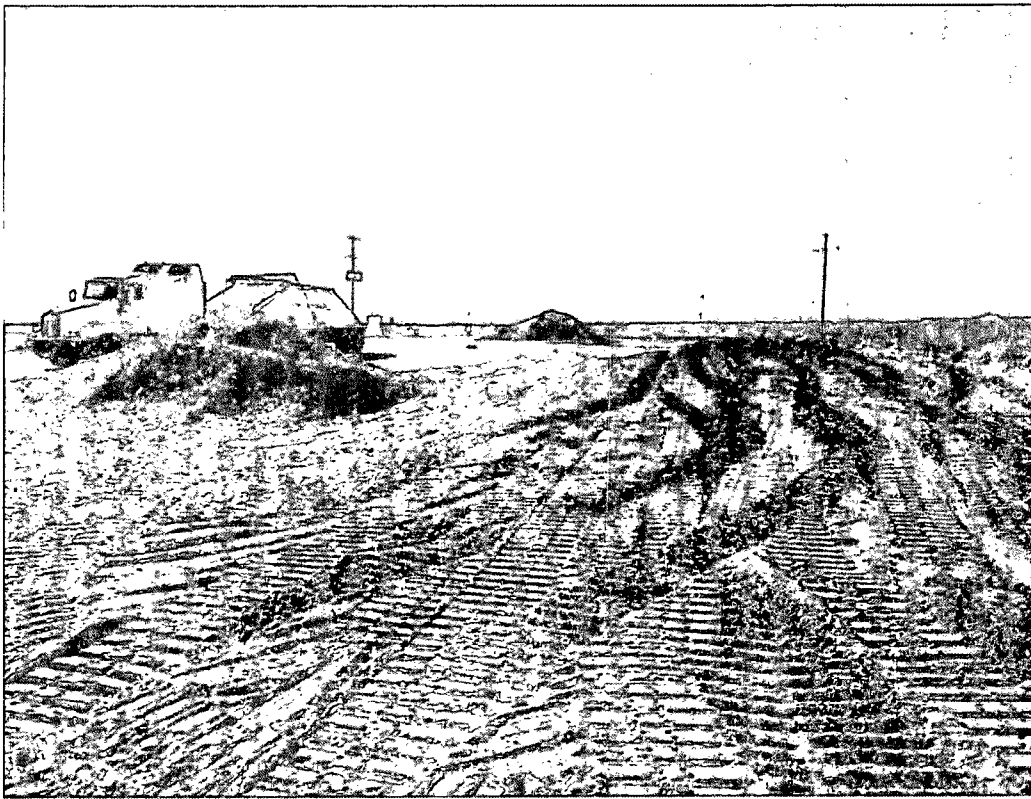
Photograph of the excavated area on the well pad at the PLU #341H Release Site.



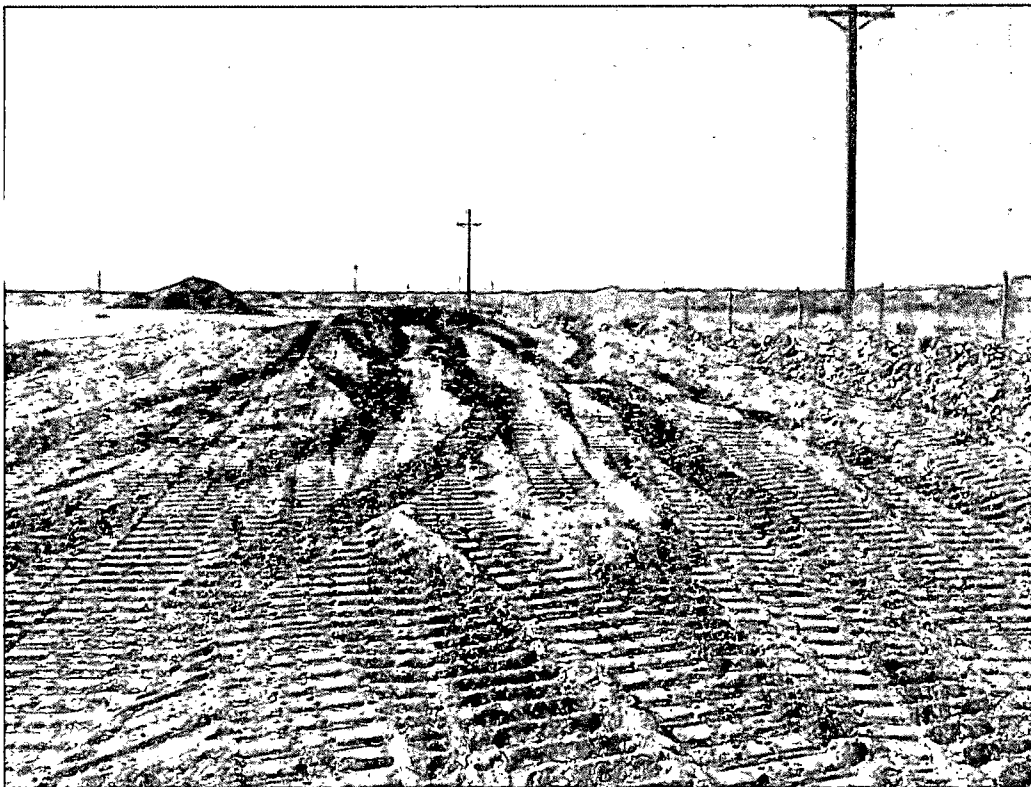
Photograph of the excavated area on the well pad at the PLU #341H Release Site.



Photograph of backfilling activities at the PLU #341H Release Site.



Photograph of backfilling activities at the PLU #341H Release Site.



Photograph of the PLU #341H Release Site after remediation activities.

Appendix C
Laboratory Analytical Reports

November 26, 2013

BEN J. ARGUIJO

Basin Environmental Service

P.O. Box 301

Lovington, NM 88260

RE: 341 H FRAC PAD

Enclosed are the results of analyses for samples received by the laboratory on 11/21/13 17:45.

Cardinal Laboratories is accredited through Texas NELAP under certificate number T104704398-13-5. Accreditation applies to drinking water, non-potable water and solid and chemical materials. All accredited analytes are denoted by an asterisk (*). For a complete list of accredited analytes and matrices visit the TCEQ website at www.tceq.texas.gov/field/qa/lab_accred_certif.html.

Cardinal Laboratories is accredited through the State of Colorado Department of Public Health and Environment for:

Method EPA 552.2	Haloacetic Acids (HAA-5)
Method EPA 524.2	Total Trihalomethanes (TTHM)
Method EPA 524.4	Regulated VOCs (V1, V2, V3)

Accreditation applies to public drinking water matrices.

This report meets NELAP requirements and is made up of a cover page, analytical results, and a copy of the original chain-of-custody. If you have any questions concerning this report, please feel free to contact me.

Sincerely,



Mike Snyder

Organic Supervisor

Analytical Results For:

 Basin Environmental Service
 BEN J. ARGUJO
 P.O. Box 301
 Lovington NM, 88260
 Fax To: (575) 396-1429

 Received: 11/21/2013
 Reported: 11/26/2013
 Project Name: 341 H FRAC PAD
 Project Number: NONE GIVEN
 Project Location: NOT GIVEN

 Sampling Date: 11/21/2013
 Sampling Type: Soil
 Sampling Condition: Cool & Intact
 Sample Received By: Jodi Henson

Sample ID: SP #1 (H302869-01)

Chloride, SM4500Cl-B		mg/kg		Analyzed By: AP					
Analyte	Result	Reporting Limit	Analyzed	Method Blank	BS	% Recovery	True Value QC	RPD	Qualifier
Chloride	96.0	16.0	11/26/2013	ND	416	104	400	0.00	

Sample ID: SP #2 (H302869-02)

Chloride, SM4500Cl-B		mg/kg		Analyzed By: AP					
Analyte	Result	Reporting Limit	Analyzed	Method Blank	BS	% Recovery	True Value QC	RPD	Qualifier
Chloride	<16.0	16.0	11/26/2013	ND	416	104	400	0.00	

Sample ID: SP #3 (H302869-03)

BTEX 8021B		mg/kg		Analyzed By: MS					
Analyte	Result	Reporting Limit	Analyzed	Method Blank	BS	% Recovery	True Value QC	RPD	Qualifier
Benzene*	<0.050	0.050	11/25/2013	ND	2.14	107	2.00	0.779	
Toluene*	<0.050	0.050	11/25/2013	ND	2.10	105	2.00	0.448	
Ethylbenzene*	<0.050	0.050	11/25/2013	ND	2.05	103	2.00	0.544	
Total Xylenes*	<0.150	0.150	11/25/2013	ND	6.00	99.9	6.00	0.513	
Total BTEX	<0.300	0.300	11/25/2013	ND					

Surrogate: 4-Bromofluorobenzene (PIE) 112 % 89.4-126

Chloride, SM4500Cl-B		mg/kg		Analyzed By: AP					
Analyte	Result	Reporting Limit	Analyzed	Method Blank	BS	% Recovery	True Value QC	RPD	Qualifier
Chloride	<16.0	16.0	11/26/2013	ND	416	104	400	0.00	

TPH 8015M		mg/kg		Analyzed By: MS					
Analyte	Result	Reporting Limit	Analyzed	Method Blank	BS	% Recovery	True Value QC	RPD	Qualifier

Cardinal Laboratories

*=Accredited Analyte

PLEASE NOTE: Liability and Damages. Cardinal's liability and client's exclusive remedy for any claim arising, whether based in contract or tort, shall be limited to the amount paid by client for analyses. All claims, including those for negligence and any other cause whatsoever shall be deemed waived unless made in writing and received by Cardinal within thirty (30) days after completion of the applicable service. In no event shall Cardinal be liable for incidental or consequential damages, including, without limitation, business interruptions, loss of use, or loss of profits incurred by client, its subsidiaries, affiliates or successors arising out of or related to the performance of the services hereunder by Cardinal, regardless of whether such claim is based upon any of the above stated reasons or otherwise. Results relate only to the samples identified above. This report shall not be reproduced except in full with written approval of Cardinal Laboratories.



Mike Snyder, Organic Supervisor

Analytical Results For:

Basin Environmental Service
BEN J. ARGUIJO
P.O. Box 301
Lovington NM, 88260
Fax To: (575) 396-1429

Received: 11/21/2013
Reported: 11/26/2013
Project Name: 341 H FRAC PAD
Project Number: NONE GIVEN
Project Location: NOT GIVEN

Sampling Date: 11/21/2013
Sampling Type: Soil
Sampling Condition: Cool & Intact
Sample Received By: Jodi Henson

Sample ID: SP #3 (H302869-03)

TPH 8015M		mg/kg		Analyzed By: MS					
Analyte	Result	Reporting Limit	Analyzed	Method Blank	BS	% Recovery	True Value QC	RPD	Qualifier
GRO C6-C10	<10.0	10.0	11/25/2013	ND	213	107	200	2.70	
DRO >C10-C28	<10.0	10.0	11/25/2013	ND	217	108	200	1.78	
EXT DRO >C28-C35	<10.0	10.0	11/25/2013	ND					
<i>Surrogate: 1-Chlorooctane</i>									
	111 %	65.2-140							
<i>Surrogate: 1-Chlorooctadecane</i>									
	109 %	63.6-154							

Sample ID: SP #4 (H302869-04)

Chloride, SM4500Cl-B		mg/kg		Analyzed By: AP					
Analyte	Result	Reporting Limit	Analyzed	Method Blank	BS	% Recovery	True Value QC	RPD	Qualifier
Chloride	<16.0	16.0	11/26/2013	ND	416	104	400	0.00	

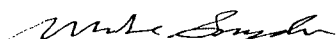
Sample ID: SP #5 (H302869-05)

Chloride, SM4500Cl-B		mg/kg		Analyzed By: AP					
Analyte	Result	Reporting Limit	Analyzed	Method Blank	BS	% Recovery	True Value QC	RPD	Qualifier
Chloride	<16.0	16.0	11/26/2013	ND	416	104	400	0.00	

Cardinal Laboratories

*=Accredited Analyte

PLEASE NOTE: Liability and Damages. Cardinal's liability and client's exclusive remedy for any claim arising, whether based in contract or tort, shall be limited to the amount paid by client for analyses. All claims, including those for negligence and any other cause whatsoever shall be deemed waived unless made in writing and received by Cardinal within thirty (30) days after completion of the applicable service. In no event shall Cardinal be liable for incidental or consequential damages, including, without limitation, business interruptions, loss of use, or loss of profits incurred by client, its subsidiaries, affiliates or successors arising out of or related to the performance of the services hereunder by Cardinal, regardless of whether such claim is based upon any of the above stated reasons or otherwise. Results relate only to the samples identified above. This report shall not be reproduced except in full with written approval of Cardinal Laboratories.



Mike Snyder, Organic Supervisor

Analytical Results For:

 Basin Environmental Service
 BEN J. ARGUIJO
 P.O. Box 301
 Lovington NM, 88260
 Fax To: (575) 396-1429

 Received: 11/21/2013
 Reported: 11/26/2013
 Project Name: 341 H FRAC PAD
 Project Number: NONE GIVEN
 Project Location: NOT GIVEN

 Sampling Date: 11/21/2013
 Sampling Type: Soil
 Sampling Condition: Cool & Intact
 Sample Received By: Jodi Henson

Sample ID: SP #6 (H302869-06)

BTEX 8021B		mg/kg		Analyzed By: MS					
Analyte	Result	Reporting Limit	Analyzed	Method Blank	BS	% Recovery	True Value QC	RPD	Qualifier
Benzene*	<0.050	0.050	11/25/2013	ND	2.14	107	2.00	0.779	
Toluene*	<0.050	0.050	11/25/2013	ND	2.10	105	2.00	0.448	
Ethylbenzene*	<0.050	0.050	11/25/2013	ND	2.05	103	2.00	0.544	
Total Xylenes*	<0.150	0.150	11/25/2013	ND	6.00	99.9	6.00	0.513	
Total BTEX	<0.300	0.300	11/25/2013	ND					

Surrogate: 4-Bromofluorobenzene (PIE) 113 % 89.4-126

Chloride, SM4500Cl-B		mg/kg		Analyzed By: AP					
Analyte	Result	Reporting Limit	Analyzed	Method Blank	BS	% Recovery	True Value QC	RPD	Qualifier
Chloride	<16.0	16.0	11/26/2013	ND	416	104	400	0.00	

TPH 8015M		mg/kg		Analyzed By: MS					
Analyte	Result	Reporting Limit	Analyzed	Method Blank	BS	% Recovery	True Value QC	RPD	Qualifier
GRO C6-C10	<10.0	10.0	11/25/2013	ND	213	107	200	2.70	
DRO >C10-C28	<10.0	10.0	11/25/2013	ND	217	108	200	1.78	
EXT DRO >C28-C35	<10.0	10.0	11/25/2013	ND					

Surrogate: 1-Chlorooctane 104 % 65.2-140

Surrogate: 1-Chlorooctadecane 101 % 63.6-154

Cardinal Laboratories

*=Accredited Analyte

PLEASE NOTE: Liability and Damages. Cardinal's liability and client's exclusive remedy for any claim arising, whether based in contract or tort, shall be limited to the amount paid by client for analyses. All claims, including those for negligence and any other cause whatsoever shall be deemed waived unless made in writing and received by Cardinal within thirty (30) days after completion of the applicable service. In no event shall Cardinal be liable for incidental or consequential damages, including, without limitation, business interruptions, loss of use, or loss of profits incurred by client, its subsidiaries, affiliates or successors arising out of or related to the performance of the services hereunder by Cardinal, regardless of whether such claim is based upon any of the above stated reasons or otherwise. Results relate only to the samples identified above. This report shall not be reproduced except in full with written approval of Cardinal Laboratories.



Mike Snyder, Organic Supervisor

Analytical Results For:

Basin Environmental Service
BEN J. ARGUIJO
P.O. Box 301
Lovington NM, 88260
Fax To: (575) 396-1429

Received:	11/21/2013	Sampling Date:	11/21/2013
Reported:	11/26/2013	Sampling Type:	Soil
Project Name:	341 H FRAC PAD	Sampling Condition:	Cool & Intact
Project Number:	NONE GIVEN	Sample Received By:	Jodi Henson
Project Location:	NOT GIVEN		

Sample ID: SP #7 (H302869-07)

Chloride, SM4500CI-B		mg/kg		Analyzed By: AP					
Analyte	Result	Reporting Limit	Analyzed	Method Blank	BS	% Recovery	True Value QC	RPD	Qualifier
Chloride	<16.0	16.0	11/26/2013	ND	416	104	400	0.00	

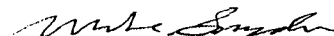
Sample ID: SP #8 (H302869-08)

Chloride, SM4500CI-B		mg/kg		Analyzed By: AP					
Analyte	Result	Reporting Limit	Analyzed	Method Blank	BS	% Recovery	True Value QC	RPD	Qualifier
Chloride	<16.0	16.0	11/26/2013	ND	416	104	400	0.00	

Cardinal Laboratories

* = Accredited Analyte

PLEASE NOTE: Liability and Damages. Cardinal's liability and client's exclusive remedy for any claim arising, whether based in contract or tort, shall be limited to the amount paid by client for analyses. All claims, including those for negligence and any other cause whatsoever shall be deemed waived unless made in writing and received by Cardinal within thirty (30) days after completion of the applicable service. In no event shall Cardinal be liable for incidental or consequential damages, including, without limitation, business interruptions, loss of use, or loss of profits incurred by client, its subsidiaries, affiliates or successors arising out of or related to the performance of the services hereunder by Cardinal, regardless of whether such claim is based upon any of the above stated reasons or otherwise. Results relate only to the samples identified above. This report shall not be reproduced except in full with written approval of Cardinal Laboratories.



Mike Snyder, Organic Supervisor

Analytical Results For:

Basin Environmental Service
BEN J. ARGUIJO
P.O. Box 301
Lovington NM, 88260
Fax To: (575) 396-1429

Received: 11/21/2013
Reported: 11/26/2013
Project Name: 341 H FRAC PAD
Project Number: NONE GIVEN
Project Location: NOT GIVEN

Sampling Date: 11/21/2013
Sampling Type: Soil
Sampling Condition: Cool & Intact
Sample Received By: Jodi Henson

Sample ID: SP #9 (H302869-09)

BTEX 8021B		mg/kg		Analyzed By: MS					
Analyte	Result	Reporting Limit	Analyzed	Method Blank	BS	% Recovery	True Value QC	RPD	Qualifier
Benzene*	<0.050	0.050	11/25/2013	ND	2.14	107	2.00	0.779	
Toluene*	<0.050	0.050	11/25/2013	ND	2.10	105	2.00	0.448	
Ethylbenzene*	<0.050	0.050	11/25/2013	ND	2.05	103	2.00	0.544	
Total Xylenes*	<0.150	0.150	11/25/2013	ND	6.00	99.9	6.00	0.513	
Total BTEX	<0.300	0.300	11/25/2013	ND					

Surrogate: 4-Bromofluorobenzene (PIE) 112 % 89.4-126

Chloride, SM4500Cl-B		mg/kg		Analyzed By: AP					
Analyte	Result	Reporting Limit	Analyzed	Method Blank	BS	% Recovery	True Value QC	RPD	Qualifier
Chloride	304	16.0	11/26/2013	ND	416	104	400	0.00	

TPH 8015M		mg/kg		Analyzed By: MS					
Analyte	Result	Reporting Limit	Analyzed	Method Blank	BS	% Recovery	True Value QC	RPD	Qualifier
GRO C6-C10	<10.0	10.0	11/25/2013	ND	213	107	200	2.70	
DRO >C10-C28	<10.0	10.0	11/25/2013	ND	217	108	200	1.78	
EXT DRO >C28-C35	<10.0	10.0	11/25/2013	ND					


Surrogate: 1-Chlorooctane 103 % 65.2-140

Surrogate: 1-Chlorooctadecane 96.9 % 63.6-154

Cardinal Laboratories

*=Accredited Analyte

PLEASE NOTE: Liability and Damages. Cardinal's liability and client's exclusive remedy for any claim arising, whether based in contract or tort, shall be limited to the amount paid by client for analyses. All claims, including those for negligence and any other cause whatsoever shall be deemed waived unless made in writing and received by Cardinal within thirty (30) days after completion of the applicable service. In no event shall Cardinal be liable for incidental or consequential damages, including, without limitation, business interruptions, loss of use, or loss of profits incurred by client, its subsidiaries, affiliates or successors arising out of or related to the performance of the services hereunder by Cardinal, regardless of whether such claim is based upon any of the above stated reasons or otherwise. Results relate only to the samples identified above. This report shall not be reproduced except in full with written approval of Cardinal Laboratories.



Mike Snyder, Organic Supervisor

Analytical Results For:

 Basin Environmental Service
 BEN J. ARGUIJO
 P.O. Box 301
 Lovington NM, 88260
 Fax To: (575) 396-1429

 Received: 11/21/2013
 Reported: 11/26/2013
 Project Name: 341 H FRAC PAD
 Project Number: NONE GIVEN
 Project Location: NOT GIVEN

 Sampling Date: 11/21/2013
 Sampling Type: Soil
 Sampling Condition: Cool & Intact
 Sample Received By: Jodi Henson

Sample ID: SP #10 (H302869-10)

BTEX 8021B			mg/kg		Analyzed By: MS				
Analyte	Result	Reporting Limit	Analyzed	Method Blank	BS	% Recovery	True Value QC	RPD	Qualifier
Benzene*	<0.050	0.050	11/26/2013	ND	2.14	107	2.00	0.779	
Toluene*	<0.050	0.050	11/26/2013	ND	2.10	105	2.00	0.448	
Ethylbenzene*	<0.050	0.050	11/26/2013	ND	2.05	103	2.00	0.544	
Total Xylenes*	<0.150	0.150	11/26/2013	ND	6.00	99.9	6.00	0.513	
Total BTEX	<0.300	0.300	11/26/2013	ND					

Surrogate: 4-Bromofluorobenzene (PIL) 112 % 89.4-126

Chloride, SM4500Cl-B			mg/kg		Analyzed By: AP				
Analyte	Result	Reporting Limit	Analyzed	Method Blank	BS	% Recovery	True Value QC	RPD	Qualifier
Chloride	1790	16.0	11/26/2013	ND	416	104	400	0.00	

TPH 8015M			mg/kg		Analyzed By: MS				
Analyte	Result	Reporting Limit	Analyzed	Method Blank	BS	% Recovery	True Value QC	RPD	Qualifier
GRO C6-C10	<10.0	10.0	11/25/2013	ND	213	107	200	2.70	
DRO >C10-C28	<10.0	10.0	11/25/2013	ND	217	108	200	1.78	
EXT DRO >C28-C35	<10.0	10.0	11/25/2013	ND					

Surrogate: 1-Chlorooctane 105 % 65.2-140

Surrogate: 1-Chlorooctadecane 103 % 63.6-154

Cardinal Laboratories

* = Accredited Analyte

PLEASE NOTE: Liability and Damages. Cardinal's liability and client's exclusive remedy for any claim arising, whether based in contract or tort, shall be limited to the amount paid by client for analyses. All claims, including those for negligence and any other cause whatsoever shall be deemed waived unless made in writing and received by Cardinal within thirty (30) days after completion of the applicable service. In no event shall Cardinal be liable for incidental or consequential damages, including, without limitation, business interruptions, loss of use, or loss of profits incurred by client, its subsidiaries, affiliates or successors arising out of or related to the performance of the services hereunder by Cardinal, regardless of whether such claim is based upon any of the above stated reasons or otherwise. Results relate only to the samples identified above. This report shall not be reproduced except in full with written approval of Cardinal Laboratories.



Mike Snyder, Organic Supervisor

Analytical Results For:

Basin Environmental Service
BEN J. ARGUIJO
P.O. Box 301
Lovington NM, 88260
Fax To: (575) 396-1429

Received: 11/21/2013
Reported: 11/26/2013
Project Name: 341 H FRAC PAD
Project Number: NONE GIVEN
Project Location: NOT GIVEN

Sampling Date: 11/21/2013
Sampling Type: Soil
Sampling Condition: Cool & Intact
Sample Received By: Jodi Henson

Sample ID: SP #11 (H302869-11)

Chloride, SM4500Cl-B		mg/kg		Analyzed By: AP					
Analyte	Result	Reporting Limit	Analyzed	Method Blank	BS	% Recovery	True Value QC	RPD	Qualifier
Chloride	<16.0	16.0	11/26/2013	ND	416	104	400	0.00	


Sample ID: SP #12 (H302869-12)

Chloride, SM4500Cl-B		mg/kg		Analyzed By: AP					
Analyte	Result	Reporting Limit	Analyzed	Method Blank	BS	% Recovery	True Value QC	RPD	Qualifier
Chloride	<16.0	16.0	11/26/2013	ND	416	104	400	0.00	

Cardinal Laboratories

*=Accredited Analyte

PLEASE NOTE: Liability and Damages. Cardinal's liability and client's exclusive remedy for any claim arising, whether based in contract or tort, shall be limited to the amount paid by client for analyses. All claims, including those for negligence and any other cause whatsoever shall be deemed waived unless made in writing and received by Cardinal within thirty (30) days after completion of the applicable service. In no event shall Cardinal be liable for incidental or consequential damages, including, without limitation, business interruptions, loss of use, or loss of profits incurred by client, its subsidiaries, affiliates or successors arising out of or related to the performance of the services hereunder by Cardinal, regardless of whether such claim is based upon any of the above stated reasons or otherwise. Results relate only to the samples identified above. This report shall not be reproduced except in full with written approval of Cardinal Laboratories.



Mike Snyder, Organic Supervisor

Analytical Results For:

Basin Environmental Service
BEN J. ARGUIJO
P.O. Box 301
Lovington NM, 88260
Fax To: (575) 396-1429

Received: 11/21/2013
Reported: 11/26/2013
Project Name: 341 H FRAC PAD
Project Number: NONE GIVEN
Project Location: NOT GIVEN

Sampling Date: 11/21/2013
Sampling Type: Soil
Sampling Condition: Cool & Intact
Sample Received By: Jodi Henson

Sample ID: SP #13 (H302869-13)

BTEx 8021B			mg/kg		Analyzed By: MS					
Analyte	Result	Reporting Limit	Analyzed	Method Blank	BS	% Recovery	True Value QC	RPD	Qualifier	
Benzene*	<0.050	0.050	11/26/2013	ND	2.14	107	2.00	0.779		
Toluene*	<0.050	0.050	11/26/2013	ND	2.10	105	2.00	0.448		
Ethylbenzene*	<0.050	0.050	11/26/2013	ND	2.05	103	2.00	0.544		
Total Xylenes*	<0.150	0.150	11/26/2013	ND	6.00	99.9	6.00	0.513		
Total BTEx	<0.300	0.300	11/26/2013	ND						

Surrogate: 4-Bromofluorobenzene (PIL) 114 % 89.4-126

Chloride, SM4500Cl-B		mg/kg		Analyzed By: AP						
Analyte	Result	Reporting Limit	Analyzed	Method Blank	BS	% Recovery	True Value QC	RPD	Qualifier	
Chloride	6080	16.0	11/26/2013	ND	416	104	400	3.92		

TPH 8015M		mg/kg		Analyzed By: MS					
Analyte	Result	Reporting Limit	Analyzed	Method Blank	BS	% Recovery	True Value QC	RPD	Qualifier
GRO C6-C10	<10.0	10.0	11/25/2013	ND	213	107	200	2.70	
DRO >C10-C28	<10.0	10.0	11/25/2013	ND	217	108	200	1.78	
EXT DRO >C28-C35	<10.0	10.0	11/25/2013	ND					

Surrogate: 1-Chlorooctane 99.9 % 65.2-140

Surrogate: 1-Chlorooctadecane 94.7 % 63.6-154

Cardinal Laboratories

*=Accredited Analyte

PLEASE NOTE: Liability and Damages. Cardinal's liability and client's exclusive remedy for any claim arising, whether based in contract or tort, shall be limited to the amount paid by client for analyses. All claims, including those for negligence and any other cause whatsoever shall be deemed waived unless made in writing and received by Cardinal within thirty (30) days after completion of the applicable service. In no event shall Cardinal be liable for incidental or consequential damages, including, without limitation, business interruptions, loss of use, or loss of profits incurred by client, its subsidiaries, affiliates or successors arising out of or related to the performance of the services hereunder by Cardinal, regardless of whether such claim is based upon any of the above stated reasons or otherwise. Results relate only to the samples identified above. This report shall not be reproduced except in full with written approval of Cardinal Laboratories.



Mike Snyder, Organic Supervisor

Analytical Results For:

 Basin Environmental Service
 BEN J. ARGUIJO
 P.O. Box 301
 Lovington NM, 88260
 Fax To: (575) 396-1429

 Received: 11/21/2013
 Reported: 11/26/2013
 Project Name: 341 H FRAC PAD
 Project Number: NONE GIVEN
 Project Location: NOT GIVEN

 Sampling Date: 11/21/2013
 Sampling Type: Soil
 Sampling Condition: Cool & Intact
 Sample Received By: Jodi Henson

Sample ID: SP #14 (H302869-14)

BTEX 8021B		mg/kg		Analyzed By: MS					
Analyte	Result	Reporting Limit	Analyzed	Method Blank	BS	% Recovery	True Value QC	RPD	Qualifier
Benzene*	<0.050	0.050	11/26/2013	ND	2.14	107	2.00	0.779	
Toluene*	<0.050	0.050	11/26/2013	ND	2.10	105	2.00	0.448	
Ethylbenzene*	<0.050	0.050	11/26/2013	ND	2.05	103	2.00	0.544	
Total Xylenes*	<0.150	0.150	11/26/2013	ND	6.00	99.9	6.00	0.513	
Total BTEX	<0.300	0.300	11/26/2013	ND					

Surrogate: 4-Bromofluorobenzene (PIE) 112 % 89.4-126

Chloride, SM4500Cl-B		mg/kg		Analyzed By: AP					
Analyte	Result	Reporting Limit	Analyzed	Method Blank	BS	% Recovery	True Value QC	RPD	Qualifier
Chloride	<16.0	16.0	11/26/2013	ND	416	104	400	3.92	

TPH 8015M		mg/kg		Analyzed By: MS					
Analyte	Result	Reporting Limit	Analyzed	Method Blank	BS	% Recovery	True Value QC	RPD	Qualifier
GRO C6-C10	<10.0	10.0	11/25/2013	ND	213	107	200	2.70	
DRO >C10-C28	<10.0	10.0	11/25/2013	ND	217	108	200	1.78	
EXT DRO >C28-C35	<10.0	10.0	11/25/2013	ND					

Surrogate: 1-Chlorooctane 109 % 65.2-140

Surrogate: 1-Chlorooctadecane 104 % 63.6-154

Cardinal Laboratories

* = Accredited Analyte

PLEASE NOTE: Liability and Damages. Cardinal's liability and client's exclusive remedy for any claim arising, whether based in contract or tort, shall be limited to the amount paid by client for analyses. All claims, including those for negligence and any other cause whatsoever shall be deemed waived unless made in writing and received by Cardinal within thirty (30) days after completion of the applicable service. In no event shall Cardinal be liable for incidental or consequential damages, including, without limitation, business interruptions, loss of use, or loss of profits incurred by client, its subsidiaries, affiliates or successors arising out of or related to the performance of the services hereunder by Cardinal, regardless of whether such claim is based upon any of the above stated reasons or otherwise. Results relate only to the samples identified above. This report shall not be reproduced except in full with written approval of Cardinal Laboratories.



Mike Snyder, Organic Supervisor

Analytical Results For:

Basin Environmental Service
BEN J. ARGUIJO
P.O. Box 301
Lovington NM, 88260
Fax To: (575) 396-1429

Received: 11/21/2013
Reported: 11/26/2013
Project Name: 341 H FRAC PAD
Project Number: NONE GIVEN
Project Location: NOT GIVEN

Sampling Date: 11/21/2013
Sampling Type: Soil
Sampling Condition: Cool & Intact
Sample Received By: Jodi Henson

Sample ID: SP #15 (H302869-15)

Chloride, SM4500Cl-B		mg/kg		Analyzed By: AP					
Analyte	Result	Reporting Limit	Analyzed	Method Blank	BS	% Recovery	True Value QC	RPD	Qualifier
Chloride	<16.0	16.0	11/26/2013	ND	416	104	400	3.92	


Sample ID: SP #16 (H302869-16)

Chloride, SM4500Cl-B		mg/kg		Analyzed By: AP					
Analyte	Result	Reporting Limit	Analyzed	Method Blank	BS	% Recovery	True Value QC	RPD	Qualifier
Chloride	<16.0	16.0	11/26/2013	ND	416	104	400	3.92	

Cardinal Laboratories

*=Accredited Analyte

PLEASE NOTE: Liability and Damages. Cardinal's liability and client's exclusive remedy for any claim arising, whether based in contract or tort, shall be limited to the amount paid by client for analyses. All claims, including those for negligence and any other cause whatsoever shall be deemed waived unless made in writing and received by Cardinal within thirty (30) days after completion of the applicable service. In no event shall Cardinal be liable for incidental or consequential damages, including, without limitation, business interruptions, loss of use, or loss of profits incurred by client, its subsidiaries, affiliates or successors arising out of or related to the performance of the services hereunder by Cardinal, regardless of whether such claim is based upon any of the above stated reasons or otherwise. Results relate only to the samples identified above. This report shall not be reproduced except in full with written approval of Cardinal Laboratories.



Mike Snyder, Organic Supervisor

Analytical Results For:

 Basin Environmental Service
 BEN J. ARGUIJO
 P.O. Box 301
 Lovington NM, 88260
 Fax To: (575) 396-1429

 Received: 11/21/2013
 Reported: 11/26/2013
 Project Name: 341 H FRAC PAD
 Project Number: NONE GIVEN
 Project Location: NOT GIVEN

 Sampling Date: 11/21/2013
 Sampling Type: Soil
 Sampling Condition: Cool & Intact
 Sample Received By: Jodi Henson

Sample ID: SP #17 (H302869-17)

BTEX 8021B		mg/kg		Analyzed By: MS					
Analyte	Result	Reporting Limit	Analyzed	Method Blank	BS	% Recovery	True Value QC	RPD	Qualifier
Benzene*	<0.050	0.050	11/26/2013	ND	2.14	107	2.00	0.779	
Toluene*	<0.050	0.050	11/26/2013	ND	2.10	105	2.00	0.448	
Ethylbenzene*	<0.050	0.050	11/26/2013	ND	2.05	103	2.00	0.544	
Total Xylenes*	<0.150	0.150	11/26/2013	ND	6.00	99.9	6.00	0.513	
Total BTEX	<0.300	0.300	11/26/2013	ND					

Surrogate: 4-Bromofluorobenzene (PIE) 114 % 89.4-126

Chloride, SM4500Cl-B		mg/kg		Analyzed By: AP					
Analyte	Result	Reporting Limit	Analyzed	Method Blank	BS	% Recovery	True Value QC	RPD	Qualifier
Chloride	9200	16.0	11/26/2013	ND	416	104	400	3.92	

TPH 8015M		mg/kg		Analyzed By: MS					
Analyte	Result	Reporting Limit	Analyzed	Method Blank	BS	% Recovery	True Value QC	RPD	Qualifier
GRO C6-C10	<10.0	10.0	11/25/2013	ND	213	107	200	2.70	
DRO >C10-C28	<10.0	10.0	11/25/2013	ND	217	108	200	1.78	
EXT DRO >C28-C35	<10.0	10.0	11/25/2013	ND					

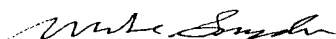
Surrogate: 1-Chlorooctane 102 % 65.2-140

Surrogate: 1-Chlorooctadecane 97.1 % 63.6-154

Cardinal Laboratories

* = Accredited Analyte

PLEASE NOTE: Liability and Damages. Cardinal's liability and client's exclusive remedy for any claim arising, whether based in contract or tort, shall be limited to the amount paid by client for analyses. All claims, including those for negligence and any other cause whatsoever shall be deemed waived unless made in writing and received by Cardinal within thirty (30) days after completion of the applicable service. In no event shall Cardinal be liable for incidental or consequential damages, including, without limitation, business interruptions, loss of use, or loss of profits incurred by client, its subsidiaries, affiliates or successors arising out of or related to the performance of the services hereunder by Cardinal, regardless of whether such claim is based upon any of the above stated reasons or otherwise. Results relate only to the samples identified above. This report shall not be reproduced except in full with written approval of Cardinal Laboratories.



Mike Snyder, Organic Supervisor

Analytical Results For:

 Basin Environmental Service
 BEN J. ARGUIJO
 P.O. Box 301
 Lovington NM, 88260
 Fax To: (575) 396-1429

 Received: 11/21/2013
 Reported: 11/26/2013
 Project Name: 341 H FRAC PAD
 Project Number: NONE GIVEN
 Project Location: NOT GIVEN

 Sampling Date: 11/21/2013
 Sampling Type: Soil
 Sampling Condition: Cool & Intact
 Sample Received By: Jodi Henson

Sample ID: SP #18 (H302869-18)

BTEX 8021B		mg/kg		Analyzed By: MS					
Analyte	Result	Reporting Limit	Analyzed	Method Blank	BS	% Recovery	True Value QC	RPD	Qualifier
Benzene*	<0.050	0.050	11/26/2013	ND	2.14	107	2.00	0.779	
Toluene*	<0.050	0.050	11/26/2013	ND	2.10	105	2.00	0.448	
Ethylbenzene*	<0.050	0.050	11/26/2013	ND	2.05	103	2.00	0.544	
Total Xylenes*	<0.150	0.150	11/26/2013	ND	6.00	99.9	6.00	0.513	
Total BTEX	<0.300	0.300	11/26/2013	ND					

Surrogate: 4-Bromofluorobenzene (PID) 112 % 89.4-126

Chloride, SM4500Cl-B		mg/kg		Analyzed By: AP					
Analyte	Result	Reporting Limit	Analyzed	Method Blank	BS	% Recovery	True Value QC	RPD	Qualifier
Chloride	80.0	16.0	11/26/2013	ND	416	104	400	3.92	

TPH 8015M		mg/kg		Analyzed By: MS					
Analyte	Result	Reporting Limit	Analyzed	Method Blank	BS	% Recovery	True Value QC	RPD	Qualifier
GRO C6-C10	<10.0	10.0	11/25/2013	ND	213	107	200	2.70	
DRO >C10-C28	<10.0	10.0	11/25/2013	ND	217	108	200	1.78	
EXT DRO >C28-C35	<10.0	10.0	11/25/2013	ND					

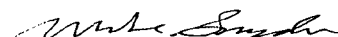
Surrogate: 1-Chlorooctane 106 % 65.2-140

Surrogate: 1-Chlorooctadecane 102 % 63.6-154

Cardinal Laboratories

* = Accredited Analyte

PLEASE NOTE: Liability and Damages. Cardinal's liability and client's exclusive remedy for any claim arising, whether based in contract or tort, shall be limited to the amount paid by client for analyses. All claims, including those for negligence and any other cause whatsoever shall be deemed waived unless made in writing and received by Cardinal within thirty (30) days after completion of the applicable service. In no event shall Cardinal be liable for incidental or consequential damages, including, without limitation, business interruptions, loss of use, or loss of profits incurred by client, its subsidiaries, affiliates or successors arising out of or related to the performance of the services hereunder by Cardinal, regardless of whether such claim is based upon any of the above stated reasons or otherwise. Results relate only to the samples identified above. This report shall not be reproduced except in full with written approval of Cardinal Laboratories.



Mike Snyder, Organic Supervisor

Analytical Results For:

Basin Environmental Service
BEN J. ARGUIJO
P.O. Box 301
Lovington NM, 88260
Fax To: (575) 396-1429

Received: 11/21/2013
Reported: 11/26/2013
Project Name: 341 H FRAC PAD
Project Number: NONE GIVEN
Project Location: NOT GIVEN

Sampling Date: 11/21/2013
Sampling Type: Soil
Sampling Condition: Cool & Intact
Sample Received By: Jodi Henson

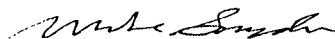
Sample ID: SP #19 (H302869-19)

Chloride, SM4500Cl-B		mg/kg		Analyzed By: AP					
Analyte	Result	Reporting Limit	Analyzed	Method Blank	BS	% Recovery	True Value QC	RPD	Qualifier
Chloride	<16.0	16.0	11/26/2013	ND	416	104	400	3.92	

Cardinal Laboratories

*=Accredited Analyte

PLEASE NOTE: Liability and Damages. Cardinal's liability and client's exclusive remedy for any claim arising, whether based in contract or tort, shall be limited to the amount paid by client for analyses. All claims, including those for negligence and any other cause whatsoever shall be deemed waived unless made in writing and received by Cardinal within thirty (30) days after completion of the applicable service. In no event shall Cardinal be liable for incidental or consequential damages, including, without limitation, business interruptions, loss of use, or loss of profits incurred by client, its subsidiaries, affiliates or successors arising out of or related to the performance of the services hereunder by Cardinal, regardless of whether such claim is based upon any of the above stated reasons or otherwise. Results relate only to the samples identified above. This report shall not be reproduced except in full with written approval of Cardinal Laboratories.



Mike Snyder, Organic Supervisor

Analytical Results For:

Basin Environmental Service
BEN J. ARGUIJO
P.O. Box 301
Lovington NM, 88260
Fax To: (575) 396-1429

Received: 11/21/2013
Reported: 11/26/2013
Project Name: 341 H FRAC PAD
Project Number: NONE GIVEN
Project Location: NOT GIVEN

Sampling Date: 11/21/2013
Sampling Type: Soil
Sampling Condition: Cool & Intact
Sample Received By: Jodi Henson

Sample ID: SP #20 (H302869-20)

BTEX 8021B		mg/kg		Analyzed By: MS					
Analyte	Result	Reporting Limit	Analyzed	Method Blank	BS	% Recovery	True Value QC	RPD	Qualifier
Benzene*	<0.050	0.050	11/26/2013	ND	2.14	107	2.00	0.779	
Toluene*	<0.050	0.050	11/26/2013	ND	2.10	105	2.00	0.448	
Ethylbenzene*	<0.050	0.050	11/26/2013	ND	2.05	103	2.00	0.544	
Total Xylenes*	<0.150	0.150	11/26/2013	ND	6.00	99.9	6.00	0.513	
Total BTEX	<0.300	0.300	11/26/2013	ND					

Surrogate: 4-Bromofluorobenzene (PIL) 113 % 89.4-126

Chloride, SM4500Cl-B		mg/kg		Analyzed By: AP					
Analyte	Result	Reporting Limit	Analyzed	Method Blank	BS	% Recovery	True Value QC	RPD	Qualifier
Chloride	768	16.0	11/26/2013	ND	416	104	400	3.92	

TPH 8015M		mg/kg		Analyzed By: MS					
Analyte	Result	Reporting Limit	Analyzed	Method Blank	BS	% Recovery	True Value QC	RPD	Qualifier
GRO C6-C10	<10.0	10.0	11/25/2013	ND	213	107	200	2.70	
DRO >C10-C28	<10.0	10.0	11/25/2013	ND	217	108	200	1.78	
EXT DRO >C28-C35	<10.0	10.0	11/25/2013	ND					

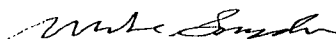
Surrogate: 1-Chlorooctane 99.1 % 65.2-140

Surrogate: 1-Chlorooctadecane 93.4 % 63.6-154

Cardinal Laboratories

*=Accredited Analyte

PLEASE NOTE: Liability and Damages. Cardinal's liability and client's exclusive remedy for any claim arising, whether based in contract or tort, shall be limited to the amount paid by client for analyses. All claims, including those for negligence and any other cause whatsoever shall be deemed waived unless made in writing and received by Cardinal within thirty (30) days after completion of the applicable service. In no event shall Cardinal be liable for incidental or consequential damages, including, without limitation, business interruptions, loss of use, or loss of profits incurred by client, its subsidiaries, affiliates or successors arising out of or related to the performance of the services hereunder by Cardinal, regardless of whether such claim is based upon any of the above stated reasons or otherwise. Results relate only to the samples identified above. This report shall not be reproduced except in full with written approval of Cardinal Laboratories.



Mike Snyder, Organic Supervisor



PHONE (575) 393-2326 ° 101 E. MARLAND ° HOBBS, NM 88240

Analytical Results For:

Basin Environmental Service
BEN J. ARGUIJO
P.O. Box 301
Lovington NM, 88260
Fax To: (575) 396-1429

Received:	11/21/2013	Sampling Date:	11/21/2013
Reported:	11/26/2013	Sampling Type:	Soil
Project Name:	341 H FRAC PAD	Sampling Condition:	Cool & Intact
Project Number:	NONE GIVEN	Sample Received By:	Jodi Henson
Project Location:	NOT GIVEN		

Sample ID: SP #21 (H302869-21)

Chloride, SM4500Cl-B		mg/kg		Analyzed By: AP					
Analyte	Result	Reporting Limit	Analyzed	Method Blank	BS	% Recovery	True Value QC	RPD	Qualifier
Chloride	176	16.0	11/26/2013	ND	416	104	400	3.92	

Cardinal Laboratories

*=Accredited Analyte

PLEASE NOTE: Liability and Damages. Cardinal's liability and client's exclusive remedy for any claim arising, whether based in contract or tort, shall be limited to the amount paid by client for analyses. All claims, including those for negligence and any other cause whatsoever shall be deemed waived unless made in writing and received by Cardinal within thirty (30) days after completion of the applicable service. In no event shall Cardinal be liable for incidental or consequential damages, including, without limitation, business interruptions, loss of use, or loss of profits incurred by client, its subsidiaries, affiliates or successors arising out of or related to the performance of the services hereunder by Cardinal, regardless of whether such claim is based upon any of the above stated reasons or otherwise. Results relate only to the samples identified above. This report shall not be reproduced except in full with written approval of Cardinal Laboratories.

Mike Snyder, Organic Supervisor

Analytical Results For:

Basin Environmental Service
BEN J. ARGUIJO
P.O. Box 301
Lovington NM, 88260
Fax To: (575) 396-1429

Received: 11/21/2013
Reported: 11/26/2013
Project Name: 341 H FRAC PAD
Project Number: NONE GIVEN
Project Location: NOT GIVEN

Sampling Date: 11/21/2013
Sampling Type: Soil
Sampling Condition: Cool & Intact
Sample Received By: Jodi Henson

Sample ID: SP #22 (H302869-22)

BTX 8021B			mg/kg		Analyzed By: MS				
Analyte	Result	Reporting Limit	Analyzed	Method Blank	BS	% Recovery	True Value QC	RPD	Qualifier
Benzene*	<0.050	0.050	11/26/2013	ND	2.14	107	2.00	0.779	
Toluene*	<0.050	0.050	11/26/2013	ND	2.10	105	2.00	0.448	
Ethylbenzene*	<0.050	0.050	11/26/2013	ND	2.05	103	2.00	0.544	
Total Xylenes*	<0.150	0.150	11/26/2013	ND	6.00	99.9	6.00	0.513	
Total BTX	<0.300	0.300	11/26/2013	ND					

Surrogate: 4-Bromofluorobenzene (PIC) 113 % 89.4-126

Chloride, SM4500Cl-B			mg/kg		Analyzed By: AP				
Analyte	Result	Reporting Limit	Analyzed	Method Blank	BS	% Recovery	True Value QC	RPD	Qualifier
Chloride	3400	16.0	11/26/2013	ND	416	104	400	3.92	

TPH 8015M			mg/kg		Analyzed By: MS				
Analyte	Result	Reporting Limit	Analyzed	Method Blank	BS	% Recovery	True Value QC	RPD	Qualifier
GRO C6-C10	<10.0	10.0	11/25/2013	ND	213	107	200	2.70	
DRO >C10-C28	<10.0	10.0	11/25/2013	ND	217	108	200	1.78	
EXT DRO >C28-C35	<10.0	10.0	11/25/2013	ND					

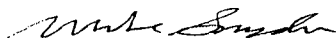
Surrogate: 1-Chlorooctane 97.9 % 65.2-140

Surrogate: 1-Chlorooctadecane 94.6 % 63.6-154

Cardinal Laboratories

*=Accredited Analyte

PLEASE NOTE: Liability and Damages. Cardinal's liability and client's exclusive remedy for any claim arising, whether based in contract or tort, shall be limited to the amount paid by client for analyses. All claims, including those for negligence and any other cause whatsoever shall be deemed waived unless made in writing and received by Cardinal within thirty (30) days after completion of the applicable service. In no event shall Cardinal be liable for incidental or consequential damages, including, without limitation, business interruptions, loss of use, or loss of profits incurred by client, its subsidiaries, affiliates or successors arising out of or related to the performance of the services hereunder by Cardinal, regardless of whether such claim is based upon any of the above stated reasons or otherwise. Results relate only to the samples identified above. This report shall not be reproduced except in full with written approval of Cardinal Laboratories.



Mike Snyder, Organic Supervisor

Analytical Results For:

Basin Environmental Service
BEN J. ARGUIJO
P.O. Box 301
Lovington NM, 88260
Fax To: (575) 396-1429

Received: 11/21/2013
Reported: 11/26/2013
Project Name: 341 H FRAC PAD
Project Number: NONE GIVEN
Project Location: NOT GIVEN

Sampling Date: 11/21/2013
Sampling Type: Soil
Sampling Condition: Cool & Intact
Sample Received By: Jodi Henson

Sample ID: SP #23 (H302869-23)

Chloride, SM4500Cl-B		mg/kg		Analyzed By: AP					
Analyte	Result	Reporting Limit	Analyzed	Method Blank	BS	% Recovery	True Value QC	RPD	Qualifier
Chloride	10300	16.0	11/26/2013	ND	416	104	400	3.92	

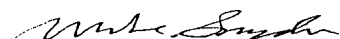
Sample ID: SP #24 (H302869-24)

Chloride, SM4500Cl-B		mg/kg		Analyzed By: AP					
Analyte	Result	Reporting Limit	Analyzed	Method Blank	BS	% Recovery	True Value QC	RPD	Qualifier
Chloride	5360	16.0	11/26/2013	ND	416	104	400	3.92	

Cardinal Laboratories

* = Accredited Analyte

PLEASE NOTE: Liability and Damages. Cardinal's liability and client's exclusive remedy for any claim arising, whether based in contract or tort, shall be limited to the amount paid by client for analyses. All claims, including those for negligence and any other cause whatsoever shall be deemed waived unless made in writing and received by Cardinal within thirty (30) days after completion of the applicable service. In no event shall Cardinal be liable for incidental or consequential damages, including, without limitation, business interruptions, loss of use, or loss of profits incurred by client, its subsidiaries, affiliates or successors arising out of or related to the performance of the services hereunder by Cardinal, regardless of whether such claim is based upon any of the above stated reasons or otherwise. Results relate only to the samples identified above. This report shall not be reproduced except in full with written approval of Cardinal Laboratories.



Mike Snyder, Organic Supervisor

Analytical Results For:

 Basin Environmental Service
 BEN J. ARGUIJO
 P.O. Box 301
 Lovington NM, 88260
 Fax To: (575) 396-1429

 Received: 11/21/2013
 Reported: 11/26/2013
 Project Name: 341 H FRAC PAD
 Project Number: NONE GIVEN
 Project Location: NOT GIVEN

 Sampling Date: 11/21/2013
 Sampling Type: Soil
 Sampling Condition: Cool & Intact
 Sample Received By: Jodi Henson

Sample ID: SP #25 (H302869-25)

BTEX 8021B		mg/kg		Analyzed By: MS					
Analyte	Result	Reporting Limit	Analyzed	Method Blank	BS	% Recovery	True Value QC	RPD	Qualifier
Benzene*	<0.050	0.050	11/26/2013	ND	2.14	107	2.00	0.779	
Toluene*	<0.050	0.050	11/26/2013	ND	2.10	105	2.00	0.448	
Ethylbenzene*	<0.050	0.050	11/26/2013	ND	2.05	103	2.00	0.544	
Total Xylenes*	<0.150	0.150	11/26/2013	ND	6.00	99.9	6.00	0.513	
Total BTEX	<0.300	0.300	11/26/2013	ND					

Surrogate: 4-Bromofluorobenzene (PIE) 113 % 89.4-126

Chloride, SM4500Cl-B		mg/kg		Analyzed By: AP					
Analyte	Result	Reporting Limit	Analyzed	Method Blank	BS	% Recovery	True Value QC	RPD	Qualifier
Chloride	2640	16.0	11/26/2013	ND	416	104	400	3.92	

TPH 8015M		mg/kg		Analyzed By: MS					
Analyte	Result	Reporting Limit	Analyzed	Method Blank	BS	% Recovery	True Value QC	RPD	Qualifier
GRO C6-C10	<10.0	10.0	11/25/2013	ND	213	107	200	2.70	
DRO >C10-C28	<10.0	10.0	11/25/2013	ND	217	108	200	1.78	
EXT DRO >C28-C35	<10.0	10.0	11/25/2013	ND					

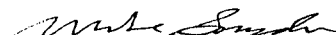
Surrogate: 1-Chlorooctane 108 % 65.2-140

Surrogate: 1-Chlorooctadecane 100 % 63.6-154

Cardinal Laboratories

*=Accredited Analyte

PLEASE NOTE: Liability and Damages. Cardinal's liability and client's exclusive remedy for any claim arising, whether based in contract or tort, shall be limited to the amount paid by client for analyses. All claims, including those for negligence and any other cause whatsoever shall be deemed waived unless made in writing and received by Cardinal within thirty (30) days after completion of the applicable service. In no event shall Cardinal be liable for incidental or consequential damages, including, without limitation, business interruptions, loss of use, or loss of profits incurred by client, its subsidiaries, affiliates or successors arising out of or related to the performance of the services hereunder by Cardinal, regardless of whether such claim is based upon any of the above stated reasons or otherwise. Results relate only to the samples identified above. This report shall not be reproduced except in full with written approval of Cardinal Laboratories.



Mike Snyder, Organic Supervisor

Analytical Results For:

Basin Environmental Service
BEN J. ARGUIJO
P.O. Box 301
Lovington NM, 88260
Fax To: (575) 396-1429

Received: 11/21/2013
Reported: 11/26/2013
Project Name: 341 H FRAC PAD
Project Number: NONE GIVEN
Project Location: NOT GIVEN

Sampling Date: 11/21/2013
Sampling Type: Soil
Sampling Condition: Cool & Intact
Sample Received By: Jodi Henson

Sample ID: SP #26 (H302869-26)

Chloride, SM4500Cl-B		mg/kg		Analyzed By: AP					
Analyte	Result	Reporting Limit	Analyzed	Method Blank	BS	% Recovery	True Value QC	RPD	Qualifier
Chloride	1920	16.0	11/26/2013	ND	416	104	400	3.92	

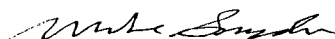
Sample ID: SP #27 (H302869-27)

Chloride, SM4500Cl-B		mg/kg		Analyzed By: AP					
Analyte	Result	Reporting Limit	Analyzed	Method Blank	BS	% Recovery	True Value QC	RPD	Qualifier
Chloride	8930	16.0	11/26/2013	ND	416	104	400	3.92	

Cardinal Laboratories

* = Accredited Analyte

PLEASE NOTE: Liability and Damages. Cardinal's liability and client's exclusive remedy for any claim arising, whether based in contract or tort, shall be limited to the amount paid by client for analyses. All claims, including those for negligence and any other cause whatsoever shall be deemed waived unless made in writing and received by Cardinal within thirty (30) days after completion of the applicable service. In no event shall Cardinal be liable for incidental or consequential damages, including, without limitation, business interruptions, loss of use, or loss of profits incurred by client, its subsidiaries, affiliates or successors arising out of or related to the performance of the services hereunder by Cardinal, regardless of whether such claim is based upon any of the above stated reasons or otherwise. Results relate only to the samples identified above. This report shall not be reproduced except in full with written approval of Cardinal Laboratories.



Mike Snyder, Organic Supervisor

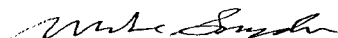
Notes and Definitions

ND	Analyte NOT DETECTED at or above the reporting limit
RPD	Relative Percent Difference
**	Samples not received at proper temperature of 6°C or below.
***	Insufficient time to reach temperature.
-	Chloride by SM4500Cl-B does not require samples be received at or below 6°C Samples reported on an as received basis (wet) unless otherwise noted on report

Cardinal Laboratories

*=Accredited Analyte

PLEASE NOTE: Liability and Damages. Cardinal's liability and client's exclusive remedy for any claim arising, whether based in contract or tort, shall be limited to the amount paid by client for analyses. All claims, including those for negligence and any other cause whatsoever shall be deemed waived unless made in writing and received by Cardinal within thirty (30) days after completion of the applicable service. In no event shall Cardinal be liable for incidental or consequential damages, including, without limitation, business interruptions, loss of use, or loss of profits incurred by client, its subsidiaries, affiliates or successors arising out of or related to the performance of the services hereunder by Cardinal, regardless of whether such claim is based upon any of the above stated reasons or otherwise. Results relate only to the samples identified above. This report shall not be reproduced except in full with written approval of Cardinal Laboratories.



Mike Snyder, Organic Supervisor



Page 22 of 24

CHAIN-OF-CUSTODY AND ANALYSIS REQUEST

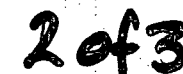
101 East Marland, Hobbs, NM 88240
(575) 393-2326 FAX (575) 393-2476

PLEASE NOTE: Liability and Damages. Cardinal's liability and client's exclusive remedy for any claim arising whether based in contract or tort, shall be limited to the amount paid by the client for the analyses. All claims, including those for negligence and any other cause whatsoever shall be deemed waived unless made in writing and received by Cardinal within 30 days after completion of the applicable service. In no event shall Cardinal be liable for incidental or consequential damages, including without limitation, business interruptions, loss of use, or loss of profits incurred by client, its subsidiaries, affiliates or successors arising out of or related to the performance of services hereunder by Cardinal, regardless of whether such claim is based upon any of the above stated reasons or otherwise.

Relinquished By: <i>Juel Sany</i>		Date: <i>11/21/13</i>	Received By: <i>[Signature]</i>	Phone Result: <input type="checkbox"/> Yes <input type="checkbox"/> No	Add'l Phone #:
Time: <i>4:00</i>				Fax Result: <input type="checkbox"/> Yes <input type="checkbox"/> No	Add'l Fax #:
Relinquished By: <i>[Signature]</i>		Date: <i>11/21/13</i>	Received By: <i>[Signature]</i>	REMARKS:	
Time: <i>5:45</i>					
Delivered By: (Circle One)		Sample Condition:	CHECKED BY: (Initials)	Please email results to pm@basinenv.com	
Sampler - UPS - Bus - Other:		Cool <input checked="" type="checkbox"/> Intact <input type="checkbox"/>		& TAsavoie@BassPet.com + <i>Jody</i>	
		Yes <input checked="" type="checkbox"/> No <input type="checkbox"/>	Yes <input type="checkbox"/> No <input checked="" type="checkbox"/>		
		<i>4.70c</i>	<i>[Signature]</i>		

† Cardinal cannot accept verbal changes. Please fax written changes to 505-393-2476

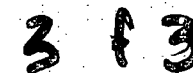
#54



101 East Marland, Hobbs, NM 88240
(575) 393-2326 FAX (575) 393-2476

† Cardinal cannot accept verbal changes. Please fax written changes to 505-393-2476.

Please email results to pm@basinenv.com
& TAsavoie@BassPet.com



Company Name: Basin Environmental Service Technologies, LLC				BILL TO				ANALYSIS REQUEST															
Project Manager: Ben J. Arguijo				P.O. #:																			
Address: P.O. Box 301				Company: BOPCO, LP																			
City: Lovington		State: NM		Zip: 88260		Attn: Tony Savoie																	
Phone #: (575) 396-2378		Fax #: (575) 396-1429		Address: 522 W. Mermod		City: Carlsbad																	
Project #:		Project Owner: BOPCO, LP		State: NM		Zip: 88220																	
Project Name:		Phone #: (432) 556-8730		Fax #:																			
Project Location: 341 H. Frac Pad																							
Sampler Name: JOE LOWRY																							
FOR LAB USE ONLY																							
Lab I.D.		Sample I.D.		GRAB OR (COMP. # CONTAINERS		MATRIX		PRESERV		SAMPLING													
						GROUNDWATER																	
						WASTEWATER																	
						SOIL																	
						OIL																	
						SLUDGE																	
						OTHER:																	
						ACID/BASE:																	
						ICE/COOL																	
						OTHER:																	
						DATE		TIME															
H302869				G 1																			
21		SP#21		G 1		X		1		11/21/13 3:40		X											
22		SP#22		G 1		X		1		3:45		X X 1											
23		SP#23		G 1		X		1		3:50		X											
24		SP#24		G 1		X		1		3:55		X											
25		SP#25		G 1		X		1		4:00		X X 1											
26		SP#26		G 1		X		1		4:05		X											
27		SP#27		G 1		X		1		4:10		X											

Relinquished By: <i>Joel Jany</i>	Date: <i>11/24/13</i> Time: <i>4:00</i>	Received By: <i>Joel Jany</i>	Phone Result: <input type="checkbox"/> Yes <input type="checkbox"/> No Fax Result: <input type="checkbox"/> Yes <input type="checkbox"/> No REMARKS:
Relinquished By: <i>Joel Jany</i>	Date: <i>11/24/13</i> Time:	Received By: <i>Jodi Henson</i>	Please email results to pm@basinenv.com & TAsavoie@BassPet.com
Delivered By: (Circle One) Sampler - UPS - Bus - Other:		Sample Condition Cool Intact <input checked="" type="checkbox"/> Yes <input type="checkbox"/> No <i>4.7°C</i>	



PHONE (575) 393-2326 ° 101 E. MARLAND ° HOBBS, NM 88240

December 09, 2013

JOEL LOWRY

Basin Environmental Service

P.O. Box 301

Lovington, NM 88260

RE: PLU #341 H FRAC PAD

Enclosed are the results of analyses for samples received by the laboratory on 12/04/13 10:20.

Cardinal Laboratories is accredited through Texas NELAP under certificate number T104704398-13-5. Accreditation applies to drinking water, non-potable water and solid and chemical materials. All accredited analytes are denoted by an asterisk (*). For a complete list of accredited analytes and matrices visit the TCEQ website at www.tceq.texas.gov/field/qa/lab_accred_certif.html.

Cardinal Laboratories is accredited through the State of Colorado Department of Public Health and Environment for:

Method EPA 552.2	Haloacetic Acids (HAA-5)
Method EPA 524.2	Total Trihalomethanes (TTHM)
Method EPA 524.4	Regulated VOCs (V1, V2, V3)

Accreditation applies to public drinking water matrices.

This report meets NELAP requirements and is made up of a cover page, analytical results, and a copy of the original chain-of-custody. If you have any questions concerning this report, please feel free to contact me.

Sincerely,

A handwritten signature in black ink that reads "Celey D. Keene". The signature is written in a cursive, flowing style.

Celey D. Keene

Lab Director/Quality Manager

Analytical Results For:

 Basin Environmental Service
 JOEL LOWRY
 P.O. Box 301
 Lovington NM, 88260
 Fax To: (575) 396-1429

 Received: 12/04/2013
 Reported: 12/09/2013
 Project Name: PLU #341 H FRAC PAD
 Project Number: NONE GIVEN
 Project Location: EDDY COUNTY, NM

 Sampling Date: 12/02/2013
 Sampling Type: Soil
 Sampling Condition: Cool & Intact
 Sample Received By: Jodi Henson

Sample ID: SP #10 B (H302934-01)

Chloride, SM4500CI-B		mg/kg		Analyzed By: AP					
Analyte	Result	Reporting Limit	Analyzed	Method Blank	BS	% Recovery	True Value QC	RPD	Qualifier
Chloride	<16.0	16.0	12/09/2013	ND	416	104	400	3.77	

Sample ID: SP #13 B (H302934-02)

BTEX 8021B		mg/kg		Analyzed By: CK					
Analyte	Result	Reporting Limit	Analyzed	Method Blank	BS	% Recovery	True Value QC	RPD	Qualifier
Benzene*	<0.050	0.050	12/04/2013	ND	2.11	105	2.00	0.576	
Toluene*	<0.050	0.050	12/04/2013	ND	2.11	106	2.00	1.07	
Ethylbenzene*	<0.050	0.050	12/04/2013	ND	2.09	105	2.00	1.21	
Total Xylenes*	<0.150	0.150	12/04/2013	ND	6.21	104	6.00	0.415	
Total BTEX	<0.300	0.300	12/04/2013	ND					

Surrogate: 4-Bromofluorobenzene (PIE) 122 % 89.4-126

Chloride, SM4500CI-B		mg/kg		Analyzed By: AP					
Analyte	Result	Reporting Limit	Analyzed	Method Blank	BS	% Recovery	True Value QC	RPD	Qualifier
Chloride	<16.0	16.0	12/09/2013	ND	416	104	400	3.77	

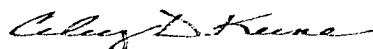
TPH 8015M		mg/kg		Analyzed By: ck					
Analyte	Result	Reporting Limit	Analyzed	Method Blank	BS	% Recovery	True Value QC	RPD	Qualifier
GRO C6-C10	<10.0	10.0	12/04/2013	ND	193	96.6	200	3.60	
DRO >C10-C28	<10.0	10.0	12/04/2013	ND	190	95.0	200	6.49	
EXT DRO >C28-C35	<10.0	10.0	12/04/2013	ND					

Surrogate: 1-Chlorooctane 92.7 % 65.2-140

Cardinal Laboratories

*=Accredited Analyte

PLEASE NOTE: Liability and Damages. Cardinal's liability and client's exclusive remedy for any claim arising, whether based in contract or tort, shall be limited to the amount paid by client for analyses. All claims, including those for negligence and any other cause whatsoever shall be deemed waived unless made in writing and received by Cardinal within thirty (30) days after completion of the applicable service. In no event shall Cardinal be liable for incidental or consequential damages, including, without limitation, business interruptions, loss of use, or loss of profits incurred by client, its subsidiaries, affiliates or successors arising out of or related to the performance of the services hereunder by Cardinal, regardless of whether such claim is based upon any of the above stated reasons or otherwise. Results relate only to the samples identified above. This report shall not be reproduced except in full with written approval of Cardinal Laboratories.



Celest D. Keene, Lab Director/Quality Manager

Analytical Results For:

 Basin Environmental Service
 JOEL LOWRY
 P.O. Box 301
 Lovington NM, 88260
 Fax To: (575) 396-1429

 Received: 12/04/2013
 Reported: 12/09/2013
 Project Name: PLU #341 H FRAC PAD
 Project Number: NONE GIVEN
 Project Location: EDDY COUNTY, NM

 Sampling Date: 12/02/2013
 Sampling Type: Soil
 Sampling Condition: Cool & Intact
 Sample Received By: Jodi Henson

Sample ID: SP #13 B (H302934-02)

TPH 8015M		mg/kg	Analyzed By: ck						
Analyte	Result	Reporting Limit	Analyzed	Method Blank	BS	% Recovery	True Value QC	RPD	Qualifier
Surrogate: 1-Chlorooctadecane	93.1 %	63.6-154							

Sample ID: SP #22 B (H302934-03)

Chloride, SM4500CI-B		mg/kg	Analyzed By: AP						
Analyte	Result	Reporting Limit	Analyzed	Method Blank	BS	% Recovery	True Value QC	RPD	Qualifier
Chloride	368	16.0	12/09/2013	ND	416	104	400	3.77	

Sample ID: SP #24 B (H302934-04)

Chloride, SM4500CI-B		mg/kg	Analyzed By: AP						
Analyte	Result	Reporting Limit	Analyzed	Method Blank	BS	% Recovery	True Value QC	RPD	Qualifier
Chloride	416	16.0	12/09/2013	ND	416	104	400	3.77	

Sample ID: SP #25 B (H302934-05)

Chloride, SM4500CI-B		mg/kg	Analyzed By: AP						
Analyte	Result	Reporting Limit	Analyzed	Method Blank	BS	% Recovery	True Value QC	RPD	Qualifier
Chloride	528	16.0	12/09/2013	ND	416	104	400	3.77	

Cardinal Laboratories

*=Accredited Analyte

PLEASE NOTE: Liability and Damages. Cardinal's liability and client's exclusive remedy for any claim arising, whether based in contract or tort, shall be limited to the amount paid by client for analyses. All claims, including those for negligence and any other cause whatsoever shall be deemed waived unless made in writing and received by Cardinal within thirty (30) days after completion of the applicable service. In no event shall Cardinal be liable for incidental or consequential damages, including, without limitation, business interruptions, loss of use, or loss of profits incurred by client, its subsidiaries, affiliates or successors arising out of or related to the performance of the services hereunder by Cardinal, regardless of whether such claim is based upon any of the above stated reasons or otherwise. Results relate only to the samples identified above. This report shall not be reproduced except in full with written approval of Cardinal Laboratories.



Celey D. Keene, Lab Director/Quality Manager



PHONE (575) 393-2326 ° 101 E. MARLAND ° HOBBS, NM 88240

Analytical Results For:

Basin Environmental Service
JOEL LOWRY
P.O. Box 301
Lovington NM, 88260
Fax To: (575) 396-1429

Received:	12/04/2013	Sampling Date:	12/03/2013
Reported:	12/09/2013	Sampling Type:	Soil
Project Name:	PLU #341 H FRAC PAD	Sampling Condition:	Cool & Intact
Project Number:	NONE GIVEN	Sample Received By:	Jodi Henson
Project Location:	EDDY COUNTY, NM		

Sample ID: SP #26 B (H302934-06)

Chloride, SM4500Cl-B		mg/kg		Analyzed By: AP					
Analyte	Result	Reporting Limit	Analyzed	Method Blank	BS	% Recovery	True Value QC	RPD	Qualifier
Chloride	32.0	16.0	12/09/2013	ND	416	104	400	3.77	

Sample ID: SP #27 B (H302934-07)

Chloride, SM4500Cl-B		mg/kg		Analyzed By: AP					
Analyte	Result	Reporting Limit	Analyzed	Method Blank	BS	% Recovery	True Value QC	RPD	Qualifier
Chloride	48.0	16.0	12/09/2013	ND	416	104	400	3.77	

Cardinal Laboratories

*=Accredited Analyte

PLEASE NOTE: Liability and Damages. Cardinal's liability and client's exclusive remedy for any claim arising, whether based in contract or tort, shall be limited to the amount paid by client for analyses. All claims, including those for negligence and any other cause whatsoever shall be deemed waived unless made in writing and received by Cardinal within thirty (30) days after completion of the applicable service. In no event shall Cardinal be liable for incidental or consequential damages, including, without limitation, business interruptions, loss of use, or loss of profits incurred by client, its subsidiaries, affiliates or successors arising out of or related to the performance of the services hereunder by Cardinal, regardless of whether such claim is based upon any of the above stated reasons or otherwise. Results relate only to the samples identified above. This report shall not be reproduced except in full with written approval of Cardinal Laboratories.

Celey D. Keene, Lab Director/Quality Manager

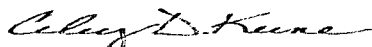
Notes and Definitions

ND	Analyte NOT DETECTED at or above the reporting limit
RPD	Relative Percent Difference
**	Samples not received at proper temperature of 6°C or below.
***	Insufficient time to reach temperature.
-	Chloride by SM4500Cl-B does not require samples be received at or below 6°C Samples reported on an as received basis (wet) unless otherwise noted on report

Cardinal Laboratories

*=Accredited Analyte

PLEASE NOTE: Liability and Damages. Cardinal's liability and client's exclusive remedy for any claim arising, whether based in contract or tort, shall be limited to the amount paid by client for analyses. All claims, including those for negligence and any other cause whatsoever shall be deemed waived unless made in writing and received by Cardinal within thirty (30) days after completion of the applicable service. In no event shall Cardinal be liable for incidental or consequential damages, including, without limitation, business interruptions, loss of use, or loss of profits incurred by client, its subsidiaries, affiliates or successors arising out of or related to the performance of the services hereunder by Cardinal, regardless of whether such claim is based upon any of the above stated reasons or otherwise. Results relate only to the samples identified above. This report shall not be reproduced except in full with written approval of Cardinal Laboratories.



Celest D. Keene, Lab Director/Quality Manager



(575) 393-2326 FAX (575) 393-2476

Page 6 of 6

PLEASE NOTE: Liability and Damages. Cardinal's liability and client's exclusive remedy for any claim arising whether based in contract or tort, shall be limited to the amount paid by the client for the analyses. All claims including those for negligence and any other cause whatsoever shall be deemed waived unless made in writing and received by Cardinal within 30 days after completion of the applicable service. In no event shall Cardinal be liable for incidental or consequential damages, including without limitation, business interruptions, loss of use, or loss of profits incurred by client, its subsidiaries, affiliates or successors arising out of or related to the performance of services hereunder by Cardinal, regardless of whether such claim is based upon any of the above stated reasons or otherwise.

Revision 1.0

† Cardinal cannot accept verbal changes. Please fax written changes to 575-393-2476

54



PHONE (575) 393-2326 • 101 E. MARLAND • HOBBS, NM 88240

December 10, 2013

JOEL LOWRY

Basin Environmental Service

P.O. Box 301

Lovington, NM 88260

RE: PLU #341 H FRAC PAD

Enclosed are the results of analyses for samples received by the laboratory on 12/05/13 8:45.

Cardinal Laboratories is accredited through Texas NELAP under certificate number T104704398-13-5. Accreditation applies to drinking water, non-potable water and solid and chemical materials. All accredited analytes are denoted by an asterisk (*). For a complete list of accredited analytes and matrices visit the TCEQ website at www.tceq.texas.gov/field/qa/lab_accred_certif.html.

Cardinal Laboratories is accredited through the State of Colorado Department of Public Health and Environment for:

Method EPA 552.2	Haloacetic Acids (HAA-5)
Method EPA 524.2	Total Trihalomethanes (TTHM)
Method EPA 524.4	Regulated VOCs (V1, V2, V3)

Accreditation applies to public drinking water matrices.

This report meets NELAP requirements and is made up of a cover page, analytical results, and a copy of the original chain-of-custody. If you have any questions concerning this report, please feel free to contact me.

Sincerely,

Celey D. Keene

Lab Director/Quality Manager



PHONE (575) 393-2326 ° 101 E. MARLAND ° HOBBS, NM 88240

Analytical Results For:

Basin Environmental Service
JOEL LOWRY
P.O. Box 301
Lovington NM, 88260
Fax To: (575) 396-1429

Received:	12/05/2013	Sampling Date:	12/04/2013
Reported:	12/10/2013	Sampling Type:	Soil
Project Name:	PLU #341 H FRAC PAD	Sampling Condition:	Cool & Intact
Project Number:	NONE GIVEN	Sample Received By:	Jodi Henson
Project Location:	EDDY COUNTY, NM		

Sample ID: SP #17B (H302948-01)

Chloride, SM4500Cl-B		mg/kg		Analyzed By: AP					
Analyte	Result	Reporting Limit	Analyzed	Method Blank	BS	% Recovery	True Value QC	RPD	Qualifier
Chloride	608	16.0	12/09/2013	ND	432	108	400	3.64	

Cardinal Laboratories

*=Accredited Analyte

PLEASE NOTE: Liability and Damages. Cardinal's liability and client's exclusive remedy for any claim arising, whether based in contract or tort, shall be limited to the amount paid by client for analyses. All claims, including those for negligence and any other cause whatsoever shall be deemed waived unless made in writing and received by Cardinal within thirty (30) days after completion of the applicable service. In no event shall Cardinal be liable for incidental or consequential damages, including, without limitation, business interruptions, loss of use, or loss of profits incurred by client, its subsidiaries, affiliates or successors arising out of or related to the performance of the services hereunder by Cardinal, regardless of whether such claim is based upon any of the above stated reasons or otherwise. Results relate only to the samples identified above. This report shall not be reproduced except in full with written approval of Cardinal Laboratories.

Celest D. Keene, Lab Director/Quality Manager

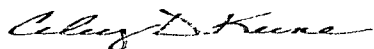
Notes and Definitions

ND	Analyte NOT DETECTED at or above the reporting limit
RPD	Relative Percent Difference
**	Samples not received at proper temperature of 6°C or below.
***	Insufficient time to reach temperature.
-	Chloride by SM4500Cl-B does not require samples be received at or below 6°C Samples reported on an as received basis (wet) unless otherwise noted on report

Cardinal Laboratories

*=Accredited Analyte

PLEASE NOTE: Liability and Damages. Cardinal's liability and client's exclusive remedy for any claim arising, whether based in contract or tort, shall be limited to the amount paid by client for analyses. All claims, including those for negligence and any other cause whatsoever shall be deemed waived unless made in writing and received by Cardinal within thirty (30) days after completion of the applicable service. In no event shall Cardinal be liable for incidental or consequential damages, including, without limitation, business interruptions, loss of use, or loss of profits incurred by client, its subsidiaries, affiliates or successors arising out of or related to the performance of the services hereunder by Cardinal, regardless of whether such claim is based upon any of the above stated reasons or otherwise. Results relate only to the samples identified above. This report shall not be reproduced except in full with written approval of Cardinal Laboratories.



Celey D. Keene, Lab Director/Quality Manager



Page 4 of 4

#54



PHONE (575) 393-2326 • 101 E. MARLAND • HOBBS, NM 88240

December 27, 2013

JOEL LOWRY

Basin Environmental Service

P.O. Box 301

Lovington, NM 88260

RE: PLU #341 H FRAC PAD

Enclosed are the results of analyses for samples received by the laboratory on 12/18/13 8:15.

Cardinal Laboratories is accredited through Texas NELAP under certificate number T104704398-13-5. Accreditation applies to drinking water, non-potable water and solid and chemical materials. All accredited analytes are denoted by an asterisk (*). For a complete list of accredited analytes and matrices visit the TCEQ website at www.tceq.texas.gov/field/qa/lab_accred_certif.html.

Cardinal Laboratories is accredited through the State of Colorado Department of Public Health and Environment for:

Method EPA 552.2	Haloacetic Acids (HAA-5)
Method EPA 524.2	Total Trihalomethanes (TTHM)
Method EPA 524.4	Regulated VOCs (V1, V2, V3)

Accreditation applies to public drinking water matrices.

This report meets NELAP requirements and is made up of a cover page, analytical results, and a copy of the original chain-of-custody. If you have any questions concerning this report, please feel free to contact me.

Sincerely,

Celey D. Keene

Lab Director/Quality Manager

Analytical Results For:

Basin Environmental Service
JOEL LOWRY
P.O. Box 301
Lovington NM, 88260
Fax To: (575) 396-1429

Received: 12/18/2013
Reported: 12/27/2013
Project Name: PLU #341 H FRAC PAD
Project Number: NONE GIVEN
Project Location: EDDY COUNTY, NM

Sampling Date: 12/17/2013
Sampling Type: Soil
Sampling Condition: Cool & Intact
Sample Received By: Celey D. Keene

Sample ID: N SW #1 (H303060-01)

Chloride, SM4500Cl-B		mg/kg		Analyzed By: CK					
Analyte	Result	Reporting Limit	Analyzed	Method Blank	BS	% Recovery	True Value QC	RPD	Qualifier
Chloride	176	16.0	12/23/2013	ND	400	100	400	3.92	

Sample ID: N SW #2 (H303060-02)

Chloride, SM4500Cl-B		mg/kg		Analyzed By: CK					
Analyte	Result	Reporting Limit	Analyzed	Method Blank	BS	% Recovery	True Value QC	RPD	Qualifier
Chloride	352	16.0	12/23/2013	ND	400	100	400	3.92	

Sample ID: N SW #3 (H303060-03)

Chloride, SM4500Cl-B		mg/kg		Analyzed By: CK					
Analyte	Result	Reporting Limit	Analyzed	Method Blank	BS	% Recovery	True Value QC	RPD	Qualifier
Chloride	48.0	16.0	12/23/2013	ND	400	100	400	3.92	

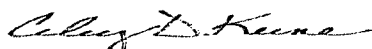
Sample ID: N SW #4 (H303060-04)

Chloride, SM4500Cl-B		mg/kg		Analyzed By: CK					
Analyte	Result	Reporting Limit	Analyzed	Method Blank	BS	% Recovery	True Value QC	RPD	Qualifier
Chloride	32.0	16.0	12/23/2013	ND	400	100	400	3.92	

Cardinal Laboratories

* = Accredited Analyte

PLEASE NOTE: Liability and Damages. Cardinal's liability and client's exclusive remedy for any claim arising, whether based in contract or tort, shall be limited to the amount paid by client for analyses. All claims, including those for negligence and any other cause whatsoever shall be deemed waived unless made in writing and received by Cardinal within thirty (30) days after completion of the applicable service. In no event shall Cardinal be liable for incidental or consequential damages, including, without limitation, business interruptions, loss of use, or loss of profits incurred by client, its subsidiaries, affiliates or successors arising out of or related to the performance of the services hereunder by Cardinal, regardless of whether such claim is based upon any of the above stated reasons or otherwise. Results relate only to the samples identified above. This report shall not be reproduced except in full with written approval of Cardinal Laboratories.



Celey D. Keene, Lab Director/Quality Manager

Analytical Results For:

Basin Environmental Service
JOEL LOWRY
P.O. Box 301
Lovington NM, 88260
Fax To: (575) 396-1429

Received:	12/18/2013	Sampling Date:	12/17/2013
Reported:	12/27/2013	Sampling Type:	Soil
Project Name:	PLU #341 H FRAC PAD	Sampling Condition:	Cool & Intact
Project Number:	NONE GIVEN	Sample Received By:	Celey D. Keene
Project Location:	EDDY COUNTY, NM		


Sample ID: S SW #2 (H303060-05)

Chloride, SM4500Cl-B		mg/kg		Analyzed By: CK					
Analyte	Result	Reporting Limit	Analyzed	Method Blank	BS	% Recovery	True Value QC	RPD	Qualifier
Chloride	832	16.0	12/23/2013	ND	432	108	400	3.77	

Cardinal Laboratories

*=Accredited Analyte

PLEASE NOTE: Liability and Damages. Cardinal's liability and client's exclusive remedy for any claim arising, whether based in contract or tort, shall be limited to the amount paid by client for analyses. All claims, including those for negligence and any other cause whatsoever shall be deemed waived unless made in writing and received by Cardinal within thirty (30) days after completion of the applicable service. In no event shall Cardinal be liable for incidental or consequential damages, including, without limitation, business interruptions, loss of use, or loss of profits incurred by client, its subsidiaries, affiliates or successors arising out of or related to the performance of the services hereunder by Cardinal, regardless of whether such claim is based upon any of the above stated reasons or otherwise. Results relate only to the samples identified above. This report shall not be reproduced except in full with written approval of Cardinal Laboratories.



Celey D. Keene, Lab Director/Quality Manager

Analytical Results For:

Basin Environmental Service
JOEL LOWRY
P.O. Box 301
Lovington NM, 88260
Fax To: (575) 396-1429

Received:	12/18/2013	Sampling Date:	12/17/2013
Reported:	12/27/2013	Sampling Type:	Soil
Project Name:	PLU #341 H FRAC PAD	Sampling Condition:	Cool & Intact
Project Number:	NONE GIVEN	Sample Received By:	Celey D. Keene
Project Location:	EDDY COUNTY, NM		

Sample ID: PAD FLOOR @ 1' (H303060-06)

BTX 8021B		mg/kg		Analyzed By: MS					
Analyte	Result	Reporting Limit	Analyzed	Method Blank	BS	% Recovery	True Value QC	RPD	Qualifier
Benzene*	<0.050	0.050	12/26/2013	ND	1.70	84.9	2.00	1.99	
Toluene*	<0.050	0.050	12/26/2013	ND	1.69	84.6	2.00	1.61	
Ethylbenzene*	<0.050	0.050	12/26/2013	ND	1.67	83.6	2.00	0.763	
Total Xylenes*	<0.150	0.150	12/26/2013	ND	4.87	81.1	6.00	0.841	
Total BTX	<0.300	0.300	12/26/2013	ND					

Surrogate: 4-Bromofluorobenzene (PIC) 104 % 89.4-126

Chloride, SM4500CI-B		mg/kg		Analyzed By: CK					
Analyte	Result	Reporting Limit	Analyzed	Method Blank	BS	% Recovery	True Value QC	RPD	Qualifier
Chloride	768	16.0	12/23/2013	ND	432	108	400	3.77	

TPH 8015M		mg/kg		Analyzed By: ms					
Analyte	Result	Reporting Limit	Analyzed	Method Blank	BS	% Recovery	True Value QC	RPD	Qualifier
GRO C6-C10	<10.0	10.0	12/23/2013	ND	191	95.3	200	5.17	
DRO >C10-C28	<10.0	10.0	12/23/2013	ND	191	95.6	200	8.25	
EXT DRO >C28-C35	<10.0	10.0	12/23/2013	ND					

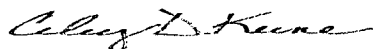
Surrogate: 1-Chlorooctane 98.8 % 65.2-140

Surrogate: 1-Chlorooctadecane 93.6 % 63.6-154

Cardinal Laboratories

*=Accredited Analyte

PLEASE NOTE: Liability and Damages. Cardinal's liability and client's exclusive remedy for any claim arising, whether based in contract or tort, shall be limited to the amount paid by client for analyses. All claims, including those for negligence and any other cause whatsoever shall be deemed waived unless made in writing and received by Cardinal within thirty (30) days after completion of the applicable service. In no event shall Cardinal be liable for incidental or consequential damages, including, without limitation, business interruptions, loss of use, or loss of profits incurred by client, its subsidiaries, affiliates or successors arising out of or related to the performance of the services hereunder by Cardinal, regardless of whether such claim is based upon any of the above stated reasons or otherwise. Results relate only to the samples identified above. This report shall not be reproduced except in full with written approval of Cardinal Laboratories.



Celey D. Keene, Lab Director/Quality Manager

Analytical Results For:

Basin Environmental Service
JOEL LOWRY
P.O. Box 301
Lovington NM, 88260
Fax To: (575) 396-1429

Received: 12/18/2013
Reported: 12/27/2013
Project Name: PLU #341 H FRAC PAD
Project Number: NONE GIVEN
Project Location: EDDY COUNTY, NM

Sampling Date: 12/17/2013
Sampling Type: Soil
Sampling Condition: Cool & Intact
Sample Received By: Celey D. Keene

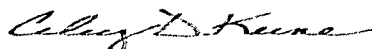
Sample ID: PAD SE SW (H303060-07)

Chloride, SM4500Cl-B		mg/kg		Analyzed By: CK					
Analyte	Result	Reporting Limit	Analyzed	Method Blank	BS	% Recovery	True Value QC	RPD	Qualifier
Chloride	544	16.0	12/23/2013	ND	432	108	400	3.77	

Cardinal Laboratories

*=Accredited Analyte

PLEASE NOTE: Liability and Damages. Cardinal's liability and client's exclusive remedy for any claim arising, whether based in contract or tort, shall be limited to the amount paid by client for analyses. All claims, including those for negligence and any other cause whatsoever shall be deemed waived unless made in writing and received by Cardinal within thirty (30) days after completion of the applicable service. In no event shall Cardinal be liable for incidental or consequential damages, including, without limitation, business interruptions, loss of use, or loss of profits incurred by client, its subsidiaries, affiliates or successors arising out of or related to the performance of the services hereunder by Cardinal, regardless of whether such claim is based upon any of the above stated reasons or otherwise. Results relate only to the samples identified above. This report shall not be reproduced except in full with written approval of Cardinal Laboratories.



Celey D. Keene, Lab Director/Quality Manager

Analytical Results For:

Basin Environmental Service
JOEL LOWRY
P.O. Box 301
Lovington NM, 88260
Fax To: (575) 396-1429

Received: 12/18/2013
Reported: 12/27/2013
Project Name: PLU #341 H FRAC PAD
Project Number: NONE GIVEN
Project Location: EDDY COUNTY, NM

Sampling Date: 12/17/2013
Sampling Type: Soil
Sampling Condition: Cool & Intact
Sample Received By: Celey D. Keene

Sample ID: FLOOR #1 @ 3.5' (H303060-08)

BTEX 8021B		mg/kg		Analyzed By: MS					
Analyte	Result	Reporting Limit	Analyzed	Method Blank	BS	% Recovery	True Value QC	RPD	Qualifier
Benzene*	<0.050	0.050	12/26/2013	ND	2.16	108	2.00	1.36	
Toluene*	<0.050	0.050	12/26/2013	ND	2.16	108	2.00	1.36	
Ethylbenzene*	<0.050	0.050	12/26/2013	ND	2.15	107	2.00	1.82	
Total Xylenes*	<0.150	0.150	12/26/2013	ND	6.27	104	6.00	2.42	
Total BTEX	<0.300	0.300	12/26/2013	ND					

Surrogate: 4-Bromofluorobenzene (PIL) 100 % 89.4-126

Chloride, SM4500Cl-B		mg/kg		Analyzed By: CK					
Analyte	Result	Reporting Limit	Analyzed	Method Blank	BS	% Recovery	True Value QC	RPD	Qualifier
Chloride	256	16.0	12/23/2013	ND	432	108	400	3.77	

TPH 8015M		mg/kg		Analyzed By: ms					
Analyte	Result	Reporting Limit	Analyzed	Method Blank	BS	% Recovery	True Value QC	RPD	Qualifier
GRO C6-C10	<10.0	10.0	12/23/2013	ND	191	95.3	200	5.17	
DRO >C10-C28	<10.0	10.0	12/23/2013	ND	191	95.6	200	8.25	
EXT DRO >C28-C35	<10.0	10.0	12/23/2013	ND					

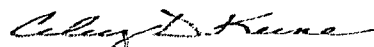
Surrogate: 1-Chlorooctane 99.1 % 65.2-140

Surrogate: 1-Chlorooctadecane 97.0 % 63.6-154

Cardinal Laboratories

*=Accredited Analyte

PLEASE NOTE: Liability and Damages. Cardinal's liability and client's exclusive remedy for any claim arising, whether based in contract or tort, shall be limited to the amount paid by client for analyses. All claims, including those for negligence and any other cause whatsoever shall be deemed waived unless made in writing and received by Cardinal within thirty (30) days after completion of the applicable service. In no event shall Cardinal be liable for incidental or consequential damages, including, without limitation, business interruptions, loss of use, or loss of profits incurred by client, its subsidiaries, affiliates or successors arising out of or related to the performance of the services hereunder by Cardinal, regardless of whether such claim is based upon any of the above stated reasons or otherwise. Results relate only to the samples identified above. This report shall not be reproduced except in full with written approval of Cardinal Laboratories.



Celey D. Keene, Lab Director/Quality Manager

Analytical Results For:

 Basin Environmental Service
 JOEL LOWRY
 P.O. Box 301
 Lovington NM, 88260
 Fax To: (575) 396-1429

 Received: 12/18/2013
 Reported: 12/27/2013
 Project Name: PLU #341 H FRAC PAD
 Project Number: NONE GIVEN
 Project Location: EDDY COUNTY, NM

 Sampling Date: 12/17/2013
 Sampling Type: Soil
 Sampling Condition: Cool & Intact
 Sample Received By: Celey D. Keene

Sample ID: FLOOR #3 @ 1' (H303060-09)

BTEX 8021B		mg/kg		Analyzed By: MS					
Analyte	Result	Reporting Limit	Analyzed	Method Blank	BS	% Recovery	True Value QC	RPD	Qualifier
Benzene*	<0.050	0.050	12/26/2013	ND	2.16	108	2.00	1.36	
Toluene*	<0.050	0.050	12/26/2013	ND	2.16	108	2.00	1.36	
Ethylbenzene*	<0.050	0.050	12/26/2013	ND	2.15	107	2.00	1.82	
Total Xylenes*	<0.150	0.150	12/26/2013	ND	6.27	104	6.00	2.42	
Total BTEX	<0.300	0.300	12/26/2013	ND					

Surrogate: 4-Bromofluorobenzene (PIL) 101 % 89.4-126

Chloride, SM4500Cl-B		mg/kg		Analyzed By: CK					
Analyte	Result	Reporting Limit	Analyzed	Method Blank	BS	% Recovery	True Value QC	RPD	Qualifier
Chloride	352	16.0	12/23/2013	ND	432	108	400	3.77	

TPH 8015M		mg/kg		Analyzed By: ms					
Analyte	Result	Reporting Limit	Analyzed	Method Blank	BS	% Recovery	True Value QC	RPD	Qualifier
GRO C6-C10	<10.0	10.0	12/23/2013	ND	191	95.3	200	5.17	
DRO >C10-C28	<10.0	10.0	12/23/2013	ND	191	95.6	200	8.25	
EXT DRO >C28-C35	<10.0	10.0	12/23/2013	ND					

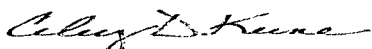
Surrogate: 1-Chlorooctane 99.7 % 65.2-140

Surrogate: 1-Chlorooctadecane 94.6 % 63.6-154

Cardinal Laboratories

* = Accredited Analyte

PLEASE NOTE: Liability and Damages. Cardinal's liability and client's exclusive remedy for any claim arising, whether based in contract or tort, shall be limited to the amount paid by client for analyses. All claims, including those for negligence and any other cause whatsoever shall be deemed waived unless made in writing and received by Cardinal within thirty (30) days after completion of the applicable service. In no event shall Cardinal be liable for incidental or consequential damages, including, without limitation, business interruptions, loss of use, or loss of profits incurred by client, its subsidiaries, affiliates or successors arising out of or related to the performance of the services hereunder by Cardinal, regardless of whether such claim is based upon any of the above stated reasons or otherwise. Results relate only to the samples identified above. This report shall not be reproduced except in full with written approval of Cardinal Laboratories.



Celey D. Keene, Lab Director/Quality Manager

Analytical Results For:

Basin Environmental Service
JOEL LOWRY
P.O. Box 301
Lovington NM, 88260
Fax To: (575) 396-1429

Received: 12/18/2013
Reported: 12/27/2013
Project Name: PLU #341 H FRAC PAD
Project Number: NONE GIVEN
Project Location: EDDY COUNTY, NM

Sampling Date: 12/17/2013
Sampling Type: Soil
Sampling Condition: Cool & Intact
Sample Received By: Celey D. Keene

Sample ID: FLOOR #4 @ 1' (H303060-10)

Chloride, SM4500Cl-B			mg/kg							Analyzed By: CK	
Analyte	Result	Reporting Limit	Analyzed	Method Blank	BS	% Recovery	True Value QC	RPD	Qualifier		
Chloride	592	16.0	12/23/2013	ND	432	108	400	3.77			

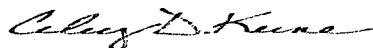
Sample ID: ESW #1 (H303060-11)

Chloride, SM4500Cl-B			mg/kg							Analyzed By: CK	
Analyte	Result	Reporting Limit	Analyzed	Method Blank	BS	% Recovery	True Value QC	RPD	Qualifier		
Chloride	208	16.0	12/23/2013	ND	432	108	400	3.77			

Cardinal Laboratories

* = Accredited Analyte

PLEASE NOTE: Liability and Damages. Cardinal's liability and client's exclusive remedy for any claim arising, whether based in contract or tort, shall be limited to the amount paid by client for analyses. All claims, including those for negligence and any other cause whatsoever shall be deemed waived unless made in writing and received by Cardinal within thirty (30) days after completion of the applicable service. In no event shall Cardinal be liable for incidental or consequential damages, including, without limitation, business interruptions, loss of use, or loss of profits incurred by client, its subsidiaries, affiliates or successors arising out of or related to the performance of the services hereunder by Cardinal, regardless of whether such claim is based upon any of the above stated reasons or otherwise. Results relate only to the samples identified above. This report shall not be reproduced except in full with written approval of Cardinal Laboratories.



Celey D. Keene, Lab Director/Quality Manager

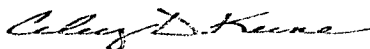
Notes and Definitions

ND	Analyte NOT DETECTED at or above the reporting limit
RPD	Relative Percent Difference
**	Samples not received at proper temperature of 6°C or below.
***	Insufficient time to reach temperature.
-	Chloride by SM4500Cl-B does not require samples be received at or below 6°C
	Samples reported on an as received basis (wet) unless otherwise noted on report

Cardinal Laboratories

*=Accredited Analyte

PLEASE NOTE: Liability and Damages. Cardinal's liability and client's exclusive remedy for any claim arising, whether based in contract or tort, shall be limited to the amount paid by client for analyses. All claims, including those for negligence and any other cause whatsoever shall be deemed waived unless made in writing and received by Cardinal within thirty (30) days after completion of the applicable service. In no event shall Cardinal be liable for incidental or consequential damages, including, without limitation, business interruptions, loss of use, or loss of profits incurred by client, its subsidiaries, affiliates or successors arising out of or related to the performance of the services hereunder by Cardinal, regardless of whether such claim is based upon any of the above stated reasons or otherwise. Results relate only to the samples identified above. This report shall not be reproduced except in full with written approval of Cardinal Laboratories.



Celey D. Keene, Lab Director/Quality Manager



CARDINAL LABORATORIES

101 East Marland, Hobbs, NM 88240

(575) 393-2326 FAX (575) 393-2476

CHAIN-OF-CUSTODY AND ANALYSIS REQUEST

Page 10 of 11

Company Name: Basin Environmental Service Technologies, LLC				BILL TO				ANALYSIS REQUEST																													
Project Manager: Joel Lowry				P.O. #:				<div style="display: flex; justify-content: space-around;"> <div>Chloride</div> <div>TPH (8015M)</div> <div>BTEX (8021B)</div> </div>																													
Address: P.O. Box 301				Company: BOPCO, LP																																	
City: Lovington		State: NM		Zip: 88260		Attn: Tony Savoie																															
Phone #: (575)396-2378		Fax #: (575)396-1429		Address: 522 W. Marland		City: Carlsbad																															
Project #:		Project Owner:		State: NM		Zip: 88220																															
Project Name: PLU #341H Frac Pad		Phone #: (432)556-8730		Fax #:																																	
Project Location: Eddy Co., NM																																					
Sampler Name: <i>Joel Lowry</i>																																					
FOR LAB USE ONLY																																					
Lab I.D.		Sample I.D.		G/RAB OR (C)OMP.		# CONTAINERS		MATRIX		PRESERV.		SAMPLING																									
				GROUNDWATER		WASTEWATER		SOIL		OIL		SLUDGE		OTHER :		ACID/BASE:		ICE / COOL		OTHER :		DATE		TIME													
H303060-																																					
01 N. SW #1				6		1																12/17		9:35													
02 N. SW #2				6		1																12/17		9:40													
03 N. SW #3				6		1																12/17		9:45													
04 N. SW #4				6		1																12/17		9:50													
05 S. SW #2				6		1																12/17		9:55													
06 Pad Floor @1'				6		1																12/17		10:00													
07 Pad SE. SW				6		1																12/17		10:05													
08 Floor #1 @3.5'				6		1																12/17		10:10													
09 Floor #3 @1'				6		1																12/17		10:15													
10 Floor #4 @1'				6		1																12/17		10:20													

PLEASE NOTE: Liability and Damages. Cardinal's liability and client's exclusive remedy for any claim arising whether based in contract or tort, shall be limited to the amount paid by the client for the analyses. All claims including those for negligence and any other cause whatsoever shall be deemed waived unless made in writing and received by Cardinal within 30 days after completion of the applicable service. In no event shall Cardinal be liable for incidental or consequential damages, including without limitation, business interruptions, loss of use, or loss of profits incurred by client, its subsidiaries, affiliates or successors arising out of or related to the performance of services hereunder by Cardinal, regardless of whether such claim is based upon any of the above stated reasons or otherwise.

Relinquished By: <i>Joel Lowry</i>		Date: 12/18/17		Received By: <i>Chris P. Savie</i>		Phone Result: <input type="checkbox"/> Yes <input type="checkbox"/> No		Add'l Phone #:	
Time: 7:25						Fax Result: <input type="checkbox"/> Yes <input type="checkbox"/> No		Add'l Fax #:	
Relinquished By: <i>Chris P. Savie</i>		Date: 12/18/17		Received By: <i>Chris P. Savie</i>		REMARKS: Please email results to pm@basinenv.com, TASavoie@BassPet.com & SJWalters@BassPet.com			
Time: 8:15									
Delivered By: (Circle One)									
Sampler - UPS - Bus - Other:		FORM-006		4.8L		Sample Condition		CHECKED BY:	
						Cool / Intact		(Initials)	
						<input checked="" type="checkbox"/> Yes <input type="checkbox"/> No		<i>CSH</i>	
						<input type="checkbox"/> Yes <input checked="" type="checkbox"/> No			

Revision 1.0

† Cardinal cannot accept verbal changes. Please fax written changes to 575-393-2476

#54



(575) 393-2326 FAX (575) 393-2476

CHAIN-OF-CUSTODY AND ANALYSIS REQUEST

Page 11 of 11

PLEASE NOTE: Liability and Damages. Cardinal's liability and client's exclusive remedy for any claim arising whether based in contract or tort, shall be limited to the amount paid by the client for the analyses. All claims, including those for negligence and any other cause whatsoever shall be deemed waived unless made in writing and received by Cardinal within 30 days after completion of the applicable service. In no event shall Cardinal be liable for incidental or consequential damages, including without limitation, business interruptions, loss of use, or loss of profits incurred by client, its subsidiaries, affiliates or successors arising out of or related to the performance of services rendered by Cardinal, regardless of whether such claim is based upon any of the above stated reasons or otherwise.

Relinquished By: <i>Paul Jones</i>		Date: <i>12/18/13</i>	Received By: <i>John Leggin</i>	Phone Result: <input type="checkbox"/> Yes <input type="checkbox"/> No	Add'l Phone #: _____
Time: <i>7:25</i>				Fax Result: <input type="checkbox"/> Yes <input type="checkbox"/> No	Add'l Fax #: _____
Relinquished By: <i>John Leggin</i>		Date: <i>12/15/13</i>	Received By: <i>Ally Heene</i>	REMARKS:	
Time: <i>8:15</i>				Please email results to pm@basinenv.com , TASavoie@BassPet.com & SJWalters@BassPet.com	
Delivered By: (Circle One)		Sample Condition	CHECKED BY:		
Sampler - UPS - Bus - Other:		Cool Intact	(Initials)		
FORM-006		<input checked="" type="checkbox"/> Yes <input type="checkbox"/> No	<i>cdh</i>		
		<i>4.3°C</i>			

Revision 1.0

† Cardinal cannot accept verbal changes. Please fax written changes to 575-393-2476

#54



PHONE (575) 393-2326 • 101 E. MARLAND • HOBBS, NM 88240

December 26, 2013

JOEL LOWRY

Basin Environmental Service

P.O. Box 301

Lovington, NM 88260

RE: PLU #341 H FRAC PAD

Enclosed are the results of analyses for samples received by the laboratory on 12/20/13 8:30.

Cardinal Laboratories is accredited through Texas NELAP under certificate number T104704398-13-5. Accreditation applies to drinking water, non-potable water and solid and chemical materials. All accredited analytes are denoted by an asterisk (*). For a complete list of accredited analytes and matrices visit the TCEQ website at www.tceq.texas.gov/field/ga/lab_accred_certif.html.

Cardinal Laboratories is accredited through the State of Colorado Department of Public Health and Environment for:

Method EPA 552.2	Haloacetic Acids (HAA-5)
Method EPA 524.2	Total Trihalomethanes (TTHM)
Method EPA 524.4	Regulated VOCs (V1, V2, V3)

Accreditation applies to public drinking water matrices.

This report meets NELAP requirements and is made up of a cover page, analytical results, and a copy of the original chain-of-custody. If you have any questions concerning this report, please feel free to contact me.

Sincerely,

A handwritten signature in black ink that reads "Celey D. Keene". The signature is written in a cursive style with a large, stylized 'C' and 'K'.

Celey D. Keene

Lab Director/Quality Manager

Analytical Results For:

 Basin Environmental Service
 JOEL LOWRY
 P.O. Box 301
 Lovington NM, 88260
 Fax To: (575) 396-1429

 Received: 12/20/2013
 Reported: 12/26/2013
 Project Name: PLU #341 H FRAC PAD
 Project Number: NONE GIVEN
 Project Location: EDDY COUNTY, NM

 Sampling Date: 12/19/2013
 Sampling Type: Soil
 Sampling Condition: Cool & Intact
 Sample Received By: Jodi Henson

Sample ID: SECT #1 WSW (H303094-01)

Chloride, SM4500CI-B		mg/kg		Analyzed By: CK					
Analyte	Result	Reporting Limit	Analyzed	Method Blank	BS	% Recovery	True Value QC	RPD	Qualifier
Chloride	80.0	16.0	12/26/2013	ND	400	100	400	7.69	

Sample ID: SECT #1 SSW (H303094-02)

Chloride, SM4500CI-B		mg/kg		Analyzed By: CK					
Analyte	Result	Reporting Limit	Analyzed	Method Blank	BS	% Recovery	True Value QC	RPD	Qualifier
Chloride	96.0	16.0	12/26/2013	ND	400	100	400	7.69	

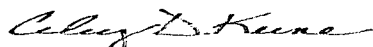
Sample ID: ESW #2 (H303094-03)

Chloride, SM4500CI-B		mg/kg		Analyzed By: CK					
Analyte	Result	Reporting Limit	Analyzed	Method Blank	BS	% Recovery	True Value QC	RPD	Qualifier
Chloride	272	16.0	12/26/2013	ND	400	100	400	7.69	

Cardinal Laboratories

*=Accredited Analyte

PLEASE NOTE: Liability and Damages. Cardinal's liability and client's exclusive remedy for any claim arising, whether based in contract or tort, shall be limited to the amount paid by client for analyses. All claims, including those for negligence and any other cause whatsoever shall be deemed waived unless made in writing and received by Cardinal within thirty (30) days after completion of the applicable service. In no event shall Cardinal be liable for incidental or consequential damages, including, without limitation, business interruptions, loss of use, or loss of profits incurred by client, its subsidiaries, affiliates or successors arising out of or related to the performance of the services hereunder by Cardinal, regardless of whether such claim is based upon any of the above stated reasons or otherwise. Results relate only to the samples identified above. This report shall not be reproduced except in full with written approval of Cardinal Laboratories.



Celey D. Keene, Lab Director/Quality Manager

Notes and Definitions

ND	Analyte NOT DETECTED at or above the reporting limit
RPD	Relative Percent Difference
**	Samples not received at proper temperature of 6°C or below.
***	Insufficient time to reach temperature.
-	Chloride by SM4500Cl-B does not require samples be received at or below 6°C Samples reported on an as received basis (wet) unless otherwise noted on report

Cardinal Laboratories

* = Accredited Analyte

PLEASE NOTE: Liability and Damages. Cardinal's liability and client's exclusive remedy for any claim arising, whether based in contract or tort, shall be limited to the amount paid by client for analyses. All claims, including those for negligence and any other cause whatsoever shall be deemed waived unless made in writing and received by Cardinal within thirty (30) days after completion of the applicable service. In no event shall Cardinal be liable for incidental or consequential damages, including, without limitation, business interruptions, loss of use, or loss of profits incurred by client, its subsidiaries, affiliates or successors arising out of or related to the performance of the services hereunder by Cardinal, regardless of whether such claim is based upon any of the above stated reasons or otherwise. Results relate only to the samples identified above. This report shall not be reproduced except in full with written approval of Cardinal Laboratories.



Celestine D. Keene, Lab Director/Quality Manager

CARDINAL LABORATORIES

101 East Marland, Hobbs, NM 88240

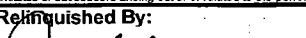




(575) 393-2326 FAX (575) 393-2476

CHAIN-OF-CUSTODY AND ANALYSIS REQUEST

Page 4 of 4

[illegible]

PLEASE NOTE: Liability and Damages. Cardinal's liability and client's exclusive remedy for any claim arising whether based in contract or tort, shall be limited to the amount paid by the client for the analyses. All claims including those for negligence and any other cause whatsoever shall be deemed waived unless made in writing and received by Cardinal within 30 days after completion of the applicable service. In no event shall Cardinal be liable for incidental or consequential damages, including without limitation, business interruptions, loss of use, or loss of profits incurred by client, its subsidiaries, affiliates or successors arising out of or related to the performance of services hereunder by Cardinal, regardless of whether such claim is based upon any of the above stated reasons or otherwise.

Relinquished By: 		Date: 12/20/13	Received By: 	Phone Result: <input type="checkbox"/> Yes <input type="checkbox"/> No	Add'l Phone #:
Time: 7:00				Fax Result: <input type="checkbox"/> Yes <input type="checkbox"/> No	Add'l Fax #:
Relinquished By: 		Date: 12/20/13	Received By: 	REMARKS:	
Time: 8:30					
Delivered By: (Circle One)		Sample Condition	CHECKED BY:	Please email results to Tony Savoie, Jody Walters and PM@basinenv.com	
Sampler - UPS - Bus - Other:		Cool <input checked="" type="checkbox"/> Intact <input checked="" type="checkbox"/>	(Initials)		
FORM-006		<input type="checkbox"/> Yes <input type="checkbox"/> No			
		<input type="checkbox"/> Yes <input type="checkbox"/> No			

Revision 1.0

† Cardinal cannot accept verbal changes. Please fax written changes to 575-393-2476

54

January 03, 2014

JOEL LOWRY

Basin Environmental Service

P.O. Box 301

Lovington, NM 88260

RE: PLU #341 H FRAC PAD

Enclosed are the results of analyses for samples received by the laboratory on 12/27/13 9:46.

Cardinal Laboratories is accredited through Texas NELAP under certificate number T104704398-13-5. Accreditation applies to drinking water, non-potable water and solid and chemical materials. All accredited analytes are denoted by an asterisk (*). For a complete list of accredited analytes and matrices visit the TCEQ website at www.tceq.texas.gov/field/qa/lab_accred_certif.html.

Cardinal Laboratories is accredited through the State of Colorado Department of Public Health and Environment for:

Method EPA 552.2	Haloacetic Acids (HAA-5)
Method EPA 524.2	Total Trihalomethanes (TTHM)
Method EPA 524.4	Regulated VOCs (V1, V2, V3)

Accreditation applies to public drinking water matrices.

This report meets NELAP requirements and is made up of a cover page, analytical results, and a copy of the original chain-of-custody. If you have any questions concerning this report, please feel free to contact me.

Sincerely,



Celey D. Keene

Lab Director/Quality Manager

Analytical Results For:

 Basin Environmental Service
 JOEL LOWRY
 P.O. Box 301
 Lovington NM, 88260
 Fax To: (575) 396-1429

 Received: 12/27/2013
 Reported: 01/03/2014
 Project Name: PLU #341 H FRAC PAD
 Project Number: NONE GIVEN
 Project Location: EDDY COUNTY, NM

 Sampling Date: 12/23/2013
 Sampling Type: Soil
 Sampling Condition: Cool & Intact
 Sample Received By: Celey D. Keene

Sample ID: WEST FLOOR (H303135-01)

Chloride, SM4500Cl-B		mg/kg	Analyzed By: AP						
Analyte	Result	Reporting Limit	Analyzed	Method Blank	BS	% Recovery	True Value QC	RPD	Qualifier
Chloride	432	16.0	01/02/2014	ND	416	104	400	0.00	
TPH 8015M		mg/kg	Analyzed By: ms						
Analyte	Result	Reporting Limit	Analyzed	Method Blank	BS	% Recovery	True Value QC	RPD	Qualifier
GRO C6-C10	<10.0	10.0	12/27/2013	ND	189	94.6	200	5.41	
DRO >C10-C28	<10.0	10.0	12/27/2013	ND	184	91.9	200	10.3	
EXT DRO >C28-C35	<10.0	10.0	12/27/2013	ND					
<hr/>									
Surrogate: 1-Chlorooctane	112 %	65.2-140							
Surrogate: 1-Chlorooctadecane	108 %	63.6-154							

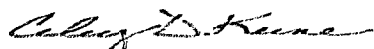
Sample ID: SOUTH EAST FLOOR (H303135-02)

Chloride, SM4500Cl-B		mg/kg	Analyzed By: AP						
Analyte	Result	Reporting Limit	Analyzed	Method Blank	BS	% Recovery	True Value QC	RPD	Qualifier
Chloride	192	16.0	01/02/2014	ND	416	104	400	0.00	
TPH 8015M		mg/kg	Analyzed By: ms						
Analyte	Result	Reporting Limit	Analyzed	Method Blank	BS	% Recovery	True Value QC	RPD	Qualifier
GRO C6-C10	<10.0	10.0	12/28/2013	ND	189	94.6	200	5.41	
DRO >C10-C28	<10.0	10.0	12/28/2013	ND	184	91.9	200	10.3	
EXT DRO >C28-C35	<10.0	10.0	12/28/2013	ND					
<hr/>									
Surrogate: 1-Chlorooctane	88.6 %	65.2-140							
Surrogate: 1-Chlorooctadecane	75.2 %	63.6-154							

Cardinal Laboratories

* = Accredited Analyte

PLEASE NOTE: Liability and Damages. Cardinal's liability and client's exclusive remedy for any claim arising, whether based in contract or tort, shall be limited to the amount paid by client for analyses. All claims, including those for negligence and any other cause whatsoever shall be deemed waived unless made in writing and received by Cardinal within thirty (30) days after completion of the applicable service. In no event shall Cardinal be liable for incidental or consequential damages, including, without limitation, business interruptions, loss of use, or loss of profits incurred by client, its subsidiaries, affiliates or successors arising out of or related to the performance of the services hereunder by Cardinal, regardless of whether such claim is based upon any of the above stated reasons or otherwise. Results relate only to the samples identified above. This report shall not be reproduced except in full with written approval of Cardinal Laboratories.



Celey D. Keene, Lab Director/Quality Manager

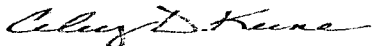
Notes and Definitions

ND	Analyte NOT DETECTED at or above the reporting limit
RPD	Relative Percent Difference
**	Samples not received at proper temperature of 6°C or below.
***	Insufficient time to reach temperature.
-	Chloride by SM4500Cl-B does not require samples be received at or below 6°C Samples reported on an as received basis (wet) unless otherwise noted on report

Cardinal Laboratories

* = Accredited Analyte

PLEASE NOTE: Liability and Damages. Cardinal's liability and client's exclusive remedy for any claim arising, whether based in contract or tort, shall be limited to the amount paid by client for analyses. All claims, including those for negligence and any other cause whatsoever shall be deemed waived unless made in writing and received by Cardinal within thirty (30) days after completion of the applicable service. In no event shall Cardinal be liable for incidental or consequential damages, including, without limitation, business interruptions, loss of use, or loss of profits incurred by client, its subsidiaries, affiliates or successors arising out of or related to the performance of the services hereunder by Cardinal, regardless of whether such claim is based upon any of the above stated reasons or otherwise. Results relate only to the samples identified above. This report shall not be reproduced except in full with written approval of Cardinal Laboratories.



Celey D. Keene, Lab Director/Quality Manager

**CARDINAL LABORATORIES**

101 East Marland, Hobbs, NM 88240

(575) 393-2326 FAX (575) 393-2476

CHAIN-OF-CUSTODY AND ANALYSIS REQUEST

Company Name: Basin Environmental Service Technologies, LLC				BILL TO				ANALYSIS REQUEST																		
Project Manager: Joel Lowry				P.O. #:				<div style="display: flex; justify-content: space-around;"> <div>Chloride</div> <div>TPH (8015M)</div> <div>BTEX (8021B)</div> </div>																		
Address: P.O. Box 301				Company: BOPCO, LP																						
City: Lovington State: NM Zip: 88260				Attn: Tony Savoie																						
Phone #: (575)396-2378 Fax #: (575)396-1429				Address: 522 W. Marland																						
Project #: Project Owner:				City: Carlsbad																						
Project Name: <u>PLU 3414 Frac Pad</u>				State: NM Zip: 88220																						
Project Location: Eddy Co., NM				Phone #: (432)556-8730																						
Sampler Name: Joel Lowry				Fax #:																						
FOR LAB USE ONLY						MATRIX		PRESERV.		SAMPLING																
Lab I.D.	Sample I.D.	GRAB OR (COMP.	# CONTAINERS	GROUNDWATER	WASTEWATER	SOIL	OIL	SLUDGE	OTHER:	ACID/BASE:	ICE / COOL	OTHER:	DATE	TIME												
H303135																										
1 West Floor		6	1										12/23/13	12:30	X	X										
2 South East Floor		6	1										12/23/13	9:15	X	X										

PLEASE NOTE: Liability and Damages. Cardinal's liability and client's exclusive remedy for any claim arising whether based in contract or tort, shall be limited to the amount paid by the client for the analyses. All claims, including those for negligence and any other cause whatsoever shall be deemed waived unless made in writing and received by Cardinal within 30 days after completion of the applicable service. In no event shall Cardinal be liable for incidental or consequential damages, including without limitation, business interruptions, loss of use, or loss of profits incurred by client, its subsidiaries, affiliates or successors arising out of or related to the performance of services hereunder by Cardinal, regardless of whether such claim is based upon any of the above stated reasons or otherwise.

Relinquished By: <u>Joel Lowry</u>	Date: 12/23/13 Time: 9:46	Received By: <u>C. Cheene</u>	Phone Result: <input type="checkbox"/> Yes <input type="checkbox"/> No Add'l Phone #:
Relinquished By:	Date:	Received By:	Fax Result: <input type="checkbox"/> Yes <input type="checkbox"/> No Add'l Fax #:
Time:			REMARKS: <u>Revised COC</u>
Delivered By: (Circle One)	Sample Condition	CHECKED BY: (Initials)	Please email results to pm@basinenv.com, TASavoie@BassPet.com & SJWalters@BassPet.com
Sampler: UPS - Bus - Other: FORM-006	Cool Intact <input checked="" type="checkbox"/> Yes <input type="checkbox"/> No <input type="checkbox"/> No <input type="checkbox"/> No	<u>C. Che</u>	

Revision 1.0

† Cardinal cannot accept verbal changes. Please fax written changes to 575-393-2476

#59



101 East Marland, Hobbs, NM 88240

(575) 393-2326 FAX (575) 393-2476

CHAIN-OF-CUSTODY AND ANALYSIS REQUEST

Page 5 of 5

PLEASE NOTE: Liability and Damages. Cardinal's liability and client's exclusive remedy for any claim arising whether based in contract or tort, shall be limited to the amount paid by the client for the analyses. All claims including those for negligence and any other cause whatsoever shall be deemed waived unless made in writing and received by Cardinal within 30 days after completion of the applicable service. In no event shall Cardinal be liable for incidental or consequential damages, including without limitation, business interruptions, loss of use, or loss of profits incurred by client, its subsidiaries, affiliates or successors arising out of or related to the performance of services hereunder by Cardinal, regardless of whether such claim is based upon any of the above stated reasons or otherwise.

Relinquished By: <i>Mark Taylor</i> Date: <i>12/23/13</i> Time: <i>4:03</i>		Received By: <i>Jodi Benson</i> Date: _____ Time: _____		Phone Result: <input type="checkbox"/> Yes <input type="checkbox"/> No Add'l Phone #: _____ Fax Result: <input type="checkbox"/> Yes <input type="checkbox"/> No Add'l Fax #: _____ REMARKS: <i>Original COC</i> Please email results to pm@basinenv.com , TASavoie@BassPet.com & SJWalters@BassPet.com	
Relinquished By: _____ Date: _____ Time: _____		Received By: _____ Date: _____ Time: _____			
Delivered By: (Circle One) Sampler - UPS - Bus - Other: _____ FORM-006		Sample Condition Cool <input checked="" type="checkbox"/> Intact <input type="checkbox"/> Yes <input checked="" type="checkbox"/> Yes <input type="checkbox"/> No <input type="checkbox"/> No <input type="checkbox"/>		CHECKED BY: (Initials) <i>[Signature]</i>	

Revision 1.0

† Cardinal cannot accept verbal changes. Please fax written changes to 575-393-2476

#54



PHONE (575) 393-2326 ° 101 E. MARLAND ° HOBBS, NM 88240

January 09, 2014

JOEL LOWRY

Basin Environmental Service

P.O. Box 301

Lovington, NM 88260

RE: PLU #341 H FRAC PAD

Enclosed are the results of analyses for samples received by the laboratory on 01/06/14 8:10.

Cardinal Laboratories is accredited through Texas NELAP under certificate number T104704398-13-5. Accreditation applies to drinking water, non-potable water and solid and chemical materials. All accredited analytes are denoted by an asterisk (*). For a complete list of accredited analytes and matrices visit the TCEQ website at www.tceq.texas.gov/field/ga/lab_accred_certif.html.

Cardinal Laboratories is accredited through the State of Colorado Department of Public Health and Environment for:

Method EPA 552.2	Haloacetic Acids (HAA-5)
Method EPA 524.2	Total Trihalomethanes (TTHM)
Method EPA 524.4	Regulated VOCs (V1, V2, V3)

Accreditation applies to public drinking water matrices.

This report meets NELAP requirements and is made up of a cover page, analytical results, and a copy of the original chain-of-custody. If you have any questions concerning this report, please feel free to contact me.

Sincerely,

A handwritten signature in black ink that reads "Celey D. Keene". The signature is written in a cursive style with a large, stylized 'C' and 'K'.

Celey D. Keene

Lab Director/Quality Manager



PHONE (575) 393-2326 • 101 E. MARLAND • HOBBS, NM 88240

Analytical Results For:

Basin Environmental Service
JOEL LOWRY
P.O. Box 301
Lovington NM, 88260
Fax To: (575) 396-1429

Received: 01/06/2014
Reported: 01/09/2014
Project Name: PLU #341 H FRAC PAD
Project Number: NONE GIVEN
Project Location: EDDY COUNTY, NM

Sampling Date: 12/30/2013
Sampling Type: Soil
Sampling Condition: Cool & Intact
Sample Received By: Jodi Henson

Sample ID: SEC. 8 WSW #1 (H400023-01)

Chloride, SM4500CI-B		mg/kg		Analyzed By: AP					
Analyte	Result	Reporting Limit	Analyzed	Method Blank	BS	% Recovery	True Value QC	RPD	Qualifier
Chloride	320	16.0	01/08/2014	ND	416	104	400	3.77	

Sample ID: SEC. 8 WSW #2 (H400023-02)

Chloride, SM4500CI-B		mg/kg		Analyzed By: AP					
Analyte	Result	Reporting Limit	Analyzed	Method Blank	BS	% Recovery	True Value QC	RPD	Qualifier
Chloride	480	16.0	01/08/2014	ND	416	104	400	3.77	

Sample ID: SEC. 8 WSW #3 (H400023-03)

Chloride, SM4500CI-B		mg/kg		Analyzed By: AP					
Analyte	Result	Reporting Limit	Analyzed	Method Blank	BS	% Recovery	True Value QC	RPD	Qualifier
Chloride	320	16.0	01/08/2014	ND	416	104	400	3.77	

Sample ID: SEC. 8 NWS (H400023-04)

Chloride, SM4500CI-B		mg/kg		Analyzed By: AP					
Analyte	Result	Reporting Limit	Analyzed	Method Blank	BS	% Recovery	True Value QC	RPD	Qualifier
Chloride	16.0	16.0	01/07/2014	ND	416	104	400	3.77	

Cardinal Laboratories

*=Accredited Analyte

PLEASE NOTE: Liability and Damages. Cardinal's liability and client's exclusive remedy for any claim arising, whether based in contract or tort, shall be limited to the amount paid by client for analyses. All claims, including those for negligence and any other cause whatsoever shall be deemed waived unless made in writing and received by Cardinal within thirty (30) days after completion of the applicable service. In no event shall Cardinal be liable for incidental or consequential damages, including, without limitation, business interruptions, loss of use, or loss of profits incurred by client, its subsidiaries, affiliates or successors arising out of or related to the performance of the services hereunder by Cardinal, regardless of whether such claim is based upon any of the above stated reasons or otherwise. Results relate only to the samples identified above. This report shall not be reproduced except in full with written approval of Cardinal Laboratories.

Celestine D. Keene

Celestine D. Keene, Lab Director/Quality Manager



PHONE (575) 393-2326 • 101 E. MARLAND • HOBBS, NM 88240

Analytical Results For:

Basin Environmental Service
JOEL LOWRY
P.O. Box 301
Lovington NM, 88260
Fax To: (575) 396-1429

Received:	01/06/2014	Sampling Date:	01/03/2014
Reported:	01/09/2014	Sampling Type:	Soil
Project Name:	PLU #341 H FRAC PAD	Sampling Condition:	Cool & Intact
Project Number:	NONE GIVEN	Sample Received By:	Jodi Henson
Project Location:	EDDY COUNTY, NM		

Sample ID: SEC. 8 SSW (H400023-05)

Chloride, SM4500Cl-B		mg/kg		Analyzed By: AP					
Analyte	Result	Reporting Limit	Analyzed	Method Blank	BS	% Recovery	True Value QC	RPD	Qualifier
Chloride	192	16.0	01/07/2014	ND	416	104	400	3.77	

Sample ID: SEC. 7 NSW (H400023-06)

Chloride, SM4500Cl-B		mg/kg		Analyzed By: AP					
Analyte	Result	Reporting Limit	Analyzed	Method Blank	BS	% Recovery	True Value QC	RPD	Qualifier
Chloride	80.0	16.0	01/07/2014	ND	416	104	400	3.77	

Sample ID: SEC. 7 SSW (H400023-07)

Chloride, SM4500Cl-B		mg/kg		Analyzed By: AP					
Analyte	Result	Reporting Limit	Analyzed	Method Blank	BS	% Recovery	True Value QC	RPD	Qualifier
Chloride	528	16.0	01/07/2014	ND	416	104	400	3.77	

Cardinal Laboratories

*=Accredited Analyte

PLEASE NOTE: Liability and Damages. Cardinal's liability and client's exclusive remedy for any claim arising, whether based in contract or tort, shall be limited to the amount paid by client for analyses. All claims, including those for negligence and any other cause whatsoever shall be deemed waived unless made in writing and received by Cardinal within thirty (30) days after completion of the applicable service. In no event shall Cardinal be liable for incidental or consequential damages, including, without limitation, business interruptions, loss of use, or loss of profits incurred by client, its subsidiaries, affiliates or successors arising out of or related to the performance of the services hereunder by Cardinal, regardless of whether such claim is based upon any of the above stated reasons or otherwise. Results relate only to the samples identified above. This report shall not be reproduced except in full with written approval of Cardinal Laboratories.

Celey D. Keene, Lab Director/Quality Manager

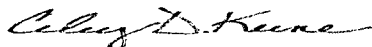
Notes and Definitions

ND	Analyte NOT DETECTED at or above the reporting limit
RPD	Relative Percent Difference
**	Samples not received at proper temperature of 6°C or below.
***	Insufficient time to reach temperature.
-	Chloride by SM4500Cl-B does not require samples be received at or below 6°C Samples reported on an as received basis (wet) unless otherwise noted on report

Cardinal Laboratories

*=Accredited Analyte

PLEASE NOTE: Liability and Damages. Cardinal's liability and client's exclusive remedy for any claim arising, whether based in contract or tort, shall be limited to the amount paid by client for analyses. All claims, including those for negligence and any other cause whatsoever shall be deemed waived unless made in writing and received by Cardinal within thirty (30) days after completion of the applicable service. In no event shall Cardinal be liable for incidental or consequential damages, including, without limitation, business interruptions, loss of use, or loss of profits incurred by client, its subsidiaries, affiliates or successors arising out of or related to the performance of the services hereunder by Cardinal, regardless of whether such claim is based upon any of the above stated reasons or otherwise. Results relate only to the samples identified above. This report shall not be reproduced except in full with written approval of Cardinal Laboratories.



Celest D. Keene, Lab Director/Quality Manager



(575) 393-2326 FAX (575) 393-2476

Page 5 of 5

PLEASE NOTE: Liability and Damages. Cardinal's liability and client's exclusive remedy for any claim arising whether based in contract or tort, shall be limited to the amount paid by the client for the analyses. All claims including those for negligence and any other cause whatsoever shall be deemed waived unless made in writing and received by Cardinal within 30 days after completion of the applicable service. In no event shall Cardinal be liable for incidental or consequential damages, including without limitation, business interruptions, loss of use, or loss of profits incurred by client, its subsidiaries, affiliates or successors arising out of or related to the performance of services hereunder by Cardinal, regardless of whether such claim is based upon any of the above stated reasons or otherwise.

Revision 1.0

† Cardinal cannot accept verbal changes. Please fax written changes to 575-393-2476

#54

January 15, 2014

JOEL LOWRY

Basin Environmental Service

P.O. Box 301

Lovington, NM 88260

RE: PLU #341 H FRAC PAD

Enclosed are the results of analyses for samples received by the laboratory on 01/09/14 8:30.

Cardinal Laboratories is accredited through Texas NELAP under certificate number T104704398-13-5. Accreditation applies to drinking water, non-potable water and solid and chemical materials. All accredited analytes are denoted by an asterisk (*). For a complete list of accredited analytes and matrices visit the TCEQ website at www.tceq.texas.gov/field/ga/lab_accred_certif.html.

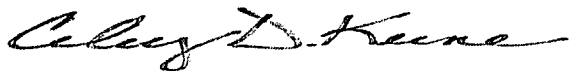
Cardinal Laboratories is accredited through the State of Colorado Department of Public Health and Environment for:

Method EPA 552.2	Haloacetic Acids (HAA-5)
Method EPA 524.2	Total Trihalomethanes (TTHM)
Method EPA 524.4	Regulated VOCs (V1, V2, V3)

Accreditation applies to public drinking water matrices.

This report meets NELAP requirements and is made up of a cover page, analytical results, and a copy of the original chain-of-custody. If you have any questions concerning this report, please feel free to contact me.

Sincerely,



Celey D. Keene

Lab Director/Quality Manager

Analytical Results For:

 Basin Environmental Service
 JOEL LOWRY
 P.O. Box 301
 Lovington NM, 88260
 Fax To: (575) 396-1429

 Received: 01/09/2014
 Reported: 01/15/2014
 Project Name: PLU #341 H FRAC PAD
 Project Number: NONE GIVEN
 Project Location: EDDY COUNTY, NM

 Sampling Date: 01/07/2014
 Sampling Type: Soil
 Sampling Condition: Cool & Intact
 Sample Received By: Jodi Henson

Sample ID: SEC. 7 FLOOR A (H400076-01)

Chloride, SM4500Cl-B		mg/kg		Analyzed By: AP					
Analyte	Result	Reporting Limit	Analyzed	Method Blank	BS	% Recovery	True Value QC	RPD	Qualifier
Chloride	608	16.0	01/13/2014	ND	416	104	400	0.00	

Sample ID: SEC. 7 FLOOR B (H400076-02)

BTX 8021B		mg/kg		Analyzed By: MS					
Analyte	Result	Reporting Limit	Analyzed	Method Blank	BS	% Recovery	True Value QC	RPD	Qualifier
Benzene*	<0.050	0.050	01/14/2014	ND	1.97	98.7	2.00	5.22	
Toluene*	<0.050	0.050	01/14/2014	ND	1.91	95.6	2.00	6.25	
Ethylbenzene*	<0.050	0.050	01/14/2014	ND	1.95	97.7	2.00	5.02	
Total Xylenes*	<0.150	0.150	01/14/2014	ND	5.73	95.4	6.00	4.47	
Total BTX	<0.300	0.300	01/14/2014	ND					

Surrogate: 4-Bromofluorobenzene (PIL) 106 % 89.4-126

Chloride, SM4500Cl-B		mg/kg		Analyzed By: AP					
Analyte	Result	Reporting Limit	Analyzed	Method Blank	BS	% Recovery	True Value QC	RPD	Qualifier
Chloride	640	16.0	01/13/2014	ND	416	104	400	0.00	

TPH 8015M		mg/kg		Analyzed By: ms					
Analyte	Result	Reporting Limit	Analyzed	Method Blank	BS	% Recovery	True Value QC	RPD	Qualifier
GRO C6-C10	<10.0	10.0	01/12/2014	ND	170	84.8	200	9.62	
DRO >C10-C28	<10.0	10.0	01/12/2014	ND	170	84.8	200	13.1	
EXT DRO >C28-C35	<10.0	10.0	01/12/2014	ND					

Surrogate: 1-Chlorooctane 100 % 65.2-140

Cardinal Laboratories

*=Accredited Analyte

PLEASE NOTE: Liability and Damages. Cardinal's liability and client's exclusive remedy for any claim arising, whether based in contract or tort, shall be limited to the amount paid by client for analyses. All claims, including those for negligence and any other cause whatsoever shall be deemed waived unless made in writing and received by Cardinal within thirty (30) days after completion of the applicable service. In no event shall Cardinal be liable for incidental or consequential damages, including, without limitation, business interruptions, loss of use, or loss of profits incurred by client, its subsidiaries, affiliates or successors arising out of or related to the performance of the services hereunder by Cardinal, regardless of whether such claim is based upon any of the above stated reasons or otherwise. Results relate only to the samples identified above. This report shall not be reproduced except in full with written approval of Cardinal Laboratories.



Celey D. Keene, Lab Director/Quality Manager

Analytical Results For:

 Basin Environmental Service
 JOEL LOWRY
 P.O. Box 301
 Lovington NM, 88260
 Fax To: (575) 396-1429

Received:	01/09/2014	Sampling Date:	01/07/2014
Reported:	01/15/2014	Sampling Type:	Soil
Project Name:	PLU #341 H FRAC PAD	Sampling Condition:	Cool & Intact
Project Number:	NONE GIVEN	Sample Received By:	Jodi Henson
Project Location:	EDDY COUNTY, NM		

Sample ID: SEC. 7 FLOOR B (H400076-02)

TPH 8015M		mg/kg		Analyzed By: ms					
Analyte	Result	Reporting Limit	Analyzed	Method Blank	BS	% Recovery	True Value QC	RPD	Qualifier
Surrogate: 1-Chlorooctadecane	110 %	63.6-154							

Sample ID: SEC. 7 FLOOR C (H400076-03)

Chloride, SM4500Cl-B		mg/kg		Analyzed By: AP					
Analyte	Result	Reporting Limit	Analyzed	Method Blank	BS	% Recovery	True Value QC	RPD	Qualifier
Chloride	944	16.0	01/13/2014	ND	416	104	400	0.00	


Sample ID: SEC. 8 FLOOR A (H400076-04)

Chloride, SM4500Cl-B		mg/kg		Analyzed By: AP					
Analyte	Result	Reporting Limit	Analyzed	Method Blank	BS	% Recovery	True Value QC	RPD	Qualifier
Chloride	960	16.0	01/13/2014	ND	416	104	400	0.00	

Cardinal Laboratories

* = Accredited Analyte

PLEASE NOTE: Liability and Damages. Cardinal's liability and client's exclusive remedy for any claim arising, whether based in contract or tort, shall be limited to the amount paid by client for analyses. All claims, including those for negligence and any other cause whatsoever shall be deemed waived unless made in writing and received by Cardinal within thirty (30) days after completion of the applicable service. In no event shall Cardinal be liable for incidental or consequential damages, including, without limitation, business interruptions, loss of use, or loss of profits incurred by client, its subsidiaries, affiliates or successors arising out of or related to the performance of the services hereunder by Cardinal, regardless of whether such claim is based upon any of the above stated reasons or otherwise. Results relate only to the samples identified above. This report shall not be reproduced except in full with written approval of Cardinal Laboratories.



Celey D. Keene, Lab Director/Quality Manager

Analytical Results For:

Basin Environmental Service
JOEL LOWRY
P.O. Box 301
Lovington NM, 88260
Fax To: (575) 396-1429

Received: 01/09/2014
Reported: 01/15/2014
Project Name: PLU #341 H FRAC PAD
Project Number: NONE GIVEN
Project Location: EDDY COUNTY, NM

Sampling Date: 01/07/2014
Sampling Type: Soil
Sampling Condition: Cool & Intact
Sample Received By: Jodi Henson

Sample ID: SEC. 8 FLOOR B (H400076-05)

BTX 8021B		mg/kg		Analyzed By: MS					
Analyte	Result	Reporting Limit	Analyzed	Method Blank	BS	% Recovery	True Value QC	RPD	Qualifier
Benzene*	<0.050	0.050	01/14/2014	ND	1.97	98.7	2.00	5.22	
Toluene*	<0.050	0.050	01/14/2014	ND	1.91	95.6	2.00	6.25	
Ethylbenzene*	<0.050	0.050	01/14/2014	ND	1.95	97.7	2.00	5.02	
Total Xylenes*	<0.150	0.150	01/14/2014	ND	5.73	95.4	6.00	4.47	
Total BTX	<0.300	0.300	01/14/2014	ND					

Surrogate: 4-Bromofluorobenzene (PID) 105 % 89.4-126

Chloride, SM4500CI-B		mg/kg		Analyzed By: AP					
Analyte	Result	Reporting Limit	Analyzed	Method Blank	BS	% Recovery	True Value QC	RPD	Qualifier
Chloride	352	16.0	01/13/2014	ND	416	104	400	0.00	

TPH 8015M		mg/kg		Analyzed By: ms					
Analyte	Result	Reporting Limit	Analyzed	Method Blank	BS	% Recovery	True Value QC	RPD	Qualifier
GRO C6-C10	<10.0	10.0	01/12/2014	ND	170	84.8	200	9.62	
DRO >C10-C28	<10.0	10.0	01/12/2014	ND	170	84.8	200	13.1	
EXT DRO >C28-C35	<10.0	10.0	01/12/2014	ND					

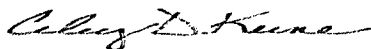
Surrogate: 1-Chlorooctane 111 % 65.2-140

Surrogate: 1-Chlorooctadecane 110 % 63.6-154

Cardinal Laboratories

*=Accredited Analyte

PLEASE NOTE: Liability and Damages. Cardinal's liability and client's exclusive remedy for any claim arising, whether based in contract or tort, shall be limited to the amount paid by client for analyses. All claims, including those for negligence and any other cause whatsoever shall be deemed waived unless made in writing and received by Cardinal within thirty (30) days after completion of the applicable service. In no event shall Cardinal be liable for incidental or consequential damages, including, without limitation, business interruptions, loss of use, or loss of profits incurred by client, its subsidiaries, affiliates or successors arising out of or related to the performance of the services hereunder by Cardinal, regardless of whether such claim is based upon any of the above stated reasons or otherwise. Results relate only to the samples identified above. This report shall not be reproduced except in full with written approval of Cardinal Laboratories.



Celey D. Keene, Lab Director/Quality Manager



PHONE (575) 393-2326 ° 101 E. MARLAND ° HOBBS, NM 88240

Analytical Results For:

Basin Environmental Service
JOEL LOWRY
P.O. Box 301
Lovington NM, 88260
Fax To: (575) 396-1429

Received:	01/09/2014	Sampling Date:	01/07/2014
Reported:	01/15/2014	Sampling Type:	Soil
Project Name:	PLU #341 H FRAC PAD	Sampling Condition:	Cool & Intact
Project Number:	NONE GIVEN	Sample Received By:	Jodi Henson
Project Location:	EDDY COUNTY, NM		

Sample ID: SEC. 8 FLOOR C (H400076-06)

Chloride, SM4500Cl-B		mg/kg		Analyzed By: AP					
Analyte	Result	Reporting Limit	Analyzed	Method Blank	BS	% Recovery	True Value QC	RPD	Qualifier
Chloride	464	16.0	01/13/2014	ND	416	104	400	0.00	

Cardinal Laboratories

*=Accredited Analyte

PLEASE NOTE: Liability and Damages. Cardinal's liability and client's exclusive remedy for any claim arising, whether based in contract or tort, shall be limited to the amount paid by client for analyses. All claims, including those for negligence and any other cause whatsoever shall be deemed waived unless made in writing and received by Cardinal within thirty (30) days after completion of the applicable service. In no event shall Cardinal be liable for incidental or consequential damages, including, without limitation, business interruptions, loss of use, or loss of profits incurred by client, its subsidiaries, affiliates or successors arising out of or related to the performance of the services hereunder by Cardinal, regardless of whether such claim is based upon any of the above stated reasons or otherwise. Results relate only to the samples identified above. This report shall not be reproduced except in full with written approval of Cardinal Laboratories.

Celey D. Keene, Lab Director/Quality Manager

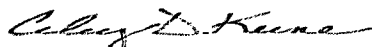
Notes and Definitions

ND	Analyte NOT DETECTED at or above the reporting limit
RPD	Relative Percent Difference
**	Samples not received at proper temperature of 6°C or below.
***	Insufficient time to reach temperature.
-	Chloride by SM4500Cl-B does not require samples be received at or below 6°C Samples reported on an as received basis (wet) unless otherwise noted on report

Cardinal Laboratories

*=Accredited Analyte

PLEASE NOTE: Liability and Damages. Cardinal's liability and client's exclusive remedy for any claim arising, whether based in contract or tort, shall be limited to the amount paid by client for analyses. All claims, including those for negligence and any other cause whatsoever shall be deemed waived unless made in writing and received by Cardinal within thirty (30) days after completion of the applicable service. In no event shall Cardinal be liable for incidental or consequential damages, including, without limitation, business interruptions, loss of use, or loss of profits incurred by client, its subsidiaries, affiliates or successors arising out of or related to the performance of the services hereunder by Cardinal, regardless of whether such claim is based upon any of the above stated reasons or otherwise. Results relate only to the samples identified above. This report shall not be reproduced except in full with written approval of Cardinal Laboratories.



Celest D. Keene, Lab Director/Quality Manager



ARDINAL LABORATORIES

101 East Marland, Hobbs, NM 88240

(575) 393-2326 FAX (575) 393-2476

CHAIN-OF-CUSTODY AND ANALYSIS REQUEST

Page 7 of 7

Company Name: Basin Environmental Service Technologies, LLC				BILL TO				ANALYSIS REQUEST																																					
Project Manager: Joel Lowry				P.O. #:				<div style="display: flex; justify-content: space-around;"> <div>Chloride</div> <div>TPH (8015M)</div> <div>BTEX (8021B)</div> </div>																																					
Address: P.O. Box 301				Company: BOPCO, LP																																									
City: Lovington State: NM Zip: 88260				Attn: Tony Savoie																																									
Phone #: (575)396-2378 Fax #: (575)396-1429				Address: 522 W. Marland																																									
Project #: Project Owner:				City: Carlsbad																																									
Project Name: PLU 341 H Frac Pad				State: NM Zip: 88220																																									
Project Location: Eddy Co., NM				Phone #: (432)556-8730																																									
Sampler Name: Matt Taylor				Fax #:																																									
FOR LAB USE ONLY						MATRIX		PRESERV.		SAMPLING																																			
Lab I.D.		Sample I.D.		(GRAB OR (C)OMP. # CONTAINERS		GROUNDWATER		WASTEWATER		SOIL		OIL		SLUDGE		OTHER :		ACID/BASE:		ICE / COOL		OTHER :		DATE		TIME																			
H400076																																													
1		Sec. 7 Floor A		G 1				X										X						1/7/14		215		x		x															
2		Sec. 7 Floor B		G 1				X										X						1/7/14		220		x		x		x													
3		Sec. 7 Floor C		G 1				X										X						1/7/14		225		x		x															
4		Sec. 8 Floor A		G 1				X										X						1/7/14		230		x		x															
5		Sec. 8 Floor B		G 1				X										X						1/7/14		235		x		x		x													
6		Sec. 8 Floor C		G 1				X										X						1/7/14		240		x		x															

PLEASE NOTE: Liability and damages. Cardinal's liability and client's exclusive remedy for any claim arising whether based in contract or tort, shall be limited to the amount paid by the client for the analyses. All claims including those for negligence and any other cause whatsoever shall be deemed waived unless made in writing and received by Cardinal within 30 days after completion of the applicable service. In no event shall Cardinal be liable for incidental or consequential damages, including without limitation, business interruptions, loss of use, or loss of profits incurred by client, its subsidiaries, affiliates or successors arising out of or related to the performance of services hereunder by Cardinal, regardless of whether such claim is based upon any of the above stated reasons or otherwise.

Relinquished By: <i>Matt Taylor</i>		Date: 1-9-14		Received By: <i>[Signature]</i>		Phone Result: <input type="checkbox"/> Yes <input type="checkbox"/> No		Add'l Phone #:	
		Time: 7:30				Fax Result: <input type="checkbox"/> Yes <input type="checkbox"/> No		Add'l Fax #:	
Relinquished By: <i>[Signature]</i>		Date: 1-9-14		Received By: <i>Jodi Benson</i>		REMARKS: Please email results to pm@basinenv.com, TASavoie@BassPet.com & SJWalters@BassPet.com			
		Time: 8:30							
Delivered By: (Circle One)									
Sampler - UPS - Bus - Other:		5.6°C		Sample Condition		CHECKED BY: <i>[Signature]</i>			
FORM-006				Cool Intact					
				<input checked="" type="checkbox"/> Yes <input type="checkbox"/> No					
				<input type="checkbox"/> No <input type="checkbox"/> No					

Revision 1.0

† Cardinal cannot accept verbal changes. Please fax written changes to 575-393-2476



PHONE (575) 393-2326 ° 101 E. MARLAND ° HOBBS, NM 88240

January 21, 2014

JOEL LOWRY

Basin Environmental Service

P.O. Box 301

Lovington, NM 88260

RE: PLU #341 H FRAC PAD

Enclosed are the results of analyses for samples received by the laboratory on 01/13/14 11:35.

Cardinal Laboratories is accredited through Texas NELAP under certificate number T104704398-13-5. Accreditation applies to drinking water, non-potable water and solid and chemical materials. All accredited analytes are denoted by an asterisk (*). For a complete list of accredited analytes and matrices visit the TCEQ website at www.tceq.texas.gov/field/qa/lab_accred_certif.html.

Cardinal Laboratories is accredited through the State of Colorado Department of Public Health and Environment for:

Method EPA 552.2	Haloacetic Acids (HAA-5)
Method EPA 524.2	Total Trihalomethanes (TTHM)
Method EPA 524.4	Regulated VOCs (V1, V2, V3)

Accreditation applies to public drinking water matrices.

This report meets NELAP requirements and is made up of a cover page, analytical results, and a copy of the original chain-of-custody. If you have any questions concerning this report, please feel free to contact me.

Sincerely,

Celey D. Keene

Lab Director/Quality Manager

Analytical Results For:

Basin Environmental Service
JOEL LOWRY
P.O. Box 301
Lovington NM, 88260
Fax To: (575) 396-1429

Received: 01/13/2014
Reported: 01/21/2014
Project Name: PLU #341 H FRAC PAD
Project Number: NONE GIVEN
Project Location: EDDY COUNTY, NM

Sampling Date: 01/10/2014
Sampling Type: Soil
Sampling Condition: Cool & Intact
Sample Received By: Jodi Henson

Sample ID: SEC. 6 NSW (H400101-01)

Chloride, SM4500CI-B		mg/kg		Analyzed By: AP					
Analyte	Result	Reporting Limit	Analyzed	Method Blank	BS	% Recovery	True Value QC	RPD	Qualifier
Chloride	400	16.0	01/17/2014	ND	400	100	400	3.92	

Sample ID: SEC. 6 FLOOR B (H400101-02)

Chloride, SM4500CI-B		mg/kg		Analyzed By: AP						
Analyte	Result	Reporting Limit	Analyzed	Method Blank	BS	% Recovery	True Value QC	RPD	Qualifier	
Chloride	944	16.0	01/17/2014	ND	400	100	400	3.92		

Sample ID: SEC. 6 SSW (H400101-03)

Chloride, SM4500Cl-B		mg/kg		Analyzed By: AP					
Analyte	Result	Reporting Limit	Analyzed	Method Blank	BS	% Recovery	True Value QC	RPD	Qualifier
Chloride	192	16.0	01/17/2014	ND	400	100	400	3.92	


Sample ID: SEC. 5 NSW (H400101-04)

Chloride, SM4500CI-B		mg/kg		Analyzed By: AP					
Analyte	Result	Reporting Limit	Analyzed	Method Blank	BS	% Recovery	True Value QC	RPD	Qualifier
Chloride	48.0	16.0	01/17/2014	ND	400	100	400	3.92	

Cardinal Laboratories

*=Accredited Analyte

PLEASE NOTE: Liability and Damages. Cardinal's liability and client's exclusive remedy for any claim arising, whether based in contract or tort, shall be limited to the amount paid by client for analyses. All claims, including those for negligence and any other cause whatsoever shall be deemed waived unless made in writing and received by Cardinal within thirty (30) days after completion of the applicable service. In no event shall Cardinal be liable for incidental or consequential damages, including, without limitation, business interruptions, loss of use, or loss of profits incurred by client, its subsidiaries, affiliates or successors arising out of or related to the performance of the services hereunder by Cardinal, regardless of whether such claim is based upon any of the above stated reasons or otherwise. Results relate only to the samples identified above. This report shall not be reproduced except in full with written approval of Cardinal Laboratories.



Celey D. Keene, Lab Director/Quality Manager



PHONE (575) 393-2326 ° 101 E. MARLAND ° HOBBS, NM 88240

Analytical Results For:

Basin Environmental Service
JOEL LOWRY
P.O. Box 301
Lovington NM, 88260
Fax To: (575) 396-1429

Received:	01/13/2014	Sampling Date:	01/10/2014
Reported:	01/21/2014	Sampling Type:	Soil
Project Name:	PLU #341 H FRAC PAD	Sampling Condition:	Cool & Intact
Project Number:	NONE GIVEN	Sample Received By:	Jodi Henson
Project Location:	EDDY COUNTY, NM		

Sample ID: SEC. 5 FLOOR A (H400101-05)

Chloride, SM4500CI-B		mg/kg		Analyzed By: AP					
Analyte	Result	Reporting Limit	Analyzed	Method Blank	BS	% Recovery	True Value QC	RPD	Qualifier
Chloride	64.0	16.0	01/17/2014	ND	400	100	400	3.92	

Sample ID: SEC. 5 SSW (H400101-06)

Chloride, SM4500CI-B		mg/kg		Analyzed By: AP					
Analyte	Result	Reporting Limit	Analyzed	Method Blank	BS	% Recovery	True Value QC	RPD	Qualifier
Chloride	48.0	16.0	01/17/2014	ND	400	100	400	3.92	

Cardinal Laboratories

*=Accredited Analyte

PLEASE NOTE: Liability and Damages. Cardinal's liability and client's exclusive remedy for any claim arising, whether based in contract or tort, shall be limited to the amount paid by client for analyses. All claims, including those for negligence and any other cause whatsoever shall be deemed waived unless made in writing and received by Cardinal within thirty (30) days after completion of the applicable service. In no event shall Cardinal be liable for incidental or consequential damages, including, without limitation, business interruptions, loss of use, or loss of profits incurred by client, its subsidiaries, affiliates or successors arising out of or related to the performance of the services hereunder by Cardinal, regardless of whether such claim is based upon any of the above stated reasons or otherwise. Results relate only to the samples identified above. This report shall not be reproduced except in full with written approval of Cardinal Laboratories.

Celest D. Keene, Lab Director/Quality Manager

Notes and Definitions

ND	Analyte NOT DETECTED at or above the reporting limit
RPD	Relative Percent Difference
**	Samples not received at proper temperature of 6°C or below.
***	Insufficient time to reach temperature.
-	Chloride by SM4500Cl-B does not require samples be received at or below 6°C Samples reported on an as received basis (wet) unless otherwise noted on report

Cardinal Laboratories

*=Accredited Analyte

PLEASE NOTE: Liability and Damages. Cardinal's liability and client's exclusive remedy for any claim arising, whether based in contract or tort, shall be limited to the amount paid by client for analyses. All claims, including those for negligence and any other cause whatsoever shall be deemed waived unless made in writing and received by Cardinal within thirty (30) days after completion of the applicable service. In no event shall Cardinal be liable for incidental or consequential damages, including, without limitation, business interruptions, loss of use, or loss of profits incurred by client, its subsidiaries, affiliates or successors arising out of or related to the performance of the services hereunder by Cardinal, regardless of whether such claim is based upon any of the above stated reasons or otherwise. Results relate only to the samples identified above. This report shall not be reproduced except in full with written approval of Cardinal Laboratories.



Celey D. Keene, Lab Director/Quality Manager

