

10-12-05 DATE IN	11-1-05 SUSPENSE	Stagner ENGINEER	10-12-05 LOGGED IN	SD TYPE	DSMD528552481 APP NO.
---------------------	---------------------	---------------------	-----------------------	------------	--------------------------

ABOVE THIS LINE FOR DIVISION USE ONLY

**NEW MEXICO OIL CONSERVATION DIVISION**  
**- Engineering Bureau -**  
 1220 South St. Francis Drive, Santa Fe, NM 87505



11-225-36E  
Jalmar

**ADMINISTRATIVE APPLICATION CHECKLIST**

THIS CHECKLIST IS MANDATORY FOR ALL ADMINISTRATIVE APPLICATIONS FOR EXCEPTIONS TO DIVISION RULES AND REGULATION WHICH REQUIRE PROCESSING AT THE DIVISION LEVEL IN SANTA FE

**Application Acronyms:**

**[NSL-Non-Standard Location] [NSP-Non-Standard Proration Unit] [SD-Simultaneous Dedication]**  
**[DHC-Downhole Commingling] [CTB-Lease Commingling] [PLC-Pool/Lease Commingling]**  
**[PC-Pool Commingling] [OLS - Off-Lease Storage] [OLM-Off-Lease Measurement]**  
**[WFX-Waterflood Expansion] [PMX-Pressure Maintenance Expansion]**  
**[SWD-Salt Water Disposal] [IPI-Injection Pressure Increase]**  
**[EOR-Qualified Enhanced Oil Recovery Certification] [PPR-Positive Production Response]**

- [1] **TYPE OF APPLICATION** - Check Those Which Apply for [A]  
 [A] Location - Spacing Unit - Simultaneous Dedication  
☐ NSL ☐ NSP ☒ SD

Check One Only for [B] or [C]

- [B] Commingling - Storage - Measurement  
☐ DHC ☐ CTB ☐ PLC ☐ PC ☐ OLS ☐ OLM

- [C] Injection - Disposal - Pressure Increase - Enhanced Oil Recovery  
☐ WFX ☐ PMX ☐ SWD ☐ IPI ☐ EOR ☐ PPR

- [D] Other: Specify \_\_\_\_\_

- [2] **NOTIFICATION REQUIRED TO:** - Check Those Which Apply, or ☐ Does Not Apply

- [A] ☐ Working, Royalty or Overriding Royalty Interest Owners  
 [B] ☒ Offset Operators, Leaseholders or Surface Owner  
 [C] ☐ Application is One Which Requires Published Legal Notice  
 [D] ☐ Notification and/or Concurrent Approval by BLM or SLO  
U.S. Bureau of Land Management - Commissioner of Public Lands, State Land Office  
 [E] ☐ For all of the above, Proof of Notification or Publication is Attached, and/or,  
 [F] ☐ Waivers are Attached

- [3] **SUBMIT ACCURATE AND COMPLETE INFORMATION REQUIRED TO PROCESS THE TYPE OF APPLICATION INDICATED ABOVE.**

- [4] **CERTIFICATION:** I hereby certify that the information submitted with this application for administrative approval is **accurate** and **complete** to the best of my knowledge. I also understand that **no action** will be taken on this application until the required information and notifications are submitted to the Division.

Note: Statement must be completed by an individual with managerial and/or supervisory capacity.

Ocean Munds-Dry      Ocean Munds-Dry      Attorney      10-11-05  
 Print or Type Name      Signature      Title      Date  
 omundsdry@hollandhart.com  
 e-mail Address

2005 OCT 12 PM 2 07

October 11, 2005

**HAND DELIVERED**

Mark E. Fesmire, P.E.  
Director  
Oil Conservation Division  
New Mexico Department of Energy,  
Minerals and Natural Resources  
1220 South Saint Francis Drive  
Santa Fe, New Mexico 87505

Re: Application of Mission Resources Corporation for administrative approval of infill gas wells and simultaneous dedication of State A A/C 2 Well No. 85, 710' FNL and 785' FEL, State A A/C 2 Well No. 86, 1980' FNL and 1980' FEL, State A A/C 2 Well No. 87, 1980' FNL and 860' FEL, State A A/C 2 Well No. 88, 1980' FSL and 860' FEL, S11-T22S-R36E, Jalmat Gas Pool, Lea County, New Mexico.

Dear Mr. Fesmire:

Pursuant to the provisions of Rule 4(B) of the Special Pool Rules for the Jalmat Gas Pool, as promulgated by Division Order No. R-8170-P dated December 14, 2001, Mission Resources Corporation ("Mission") hereby seeks an administrative exception to the gas well density provisions of Rule 3(C) and authorization to simultaneously dedicate said wells to the 640-acre spacing and proration unit originally approved by Order No. R-6483, dated October 20, 1980.

Mission seeks approval of the following wells in Section 11, Township 22 South, Range 36 East, NMPM, Lea County, New Mexico:

The State A A/C 2 Well No. 85 to be drilled at a standard location 710 feet from the North line and 785 feet from the East line (Unit A);

The State A A/C 2 Well No. 86 to be drilled 1980 feet from the North line and 1980 feet from the East line (Unit G);

The State A A/C 2 Well No. 87 to be drilled 1980 feet from the North Line and 860 feet from the East line (Unit H); and

The State A A/C 2 Well No. 88 to be drilled 1980 feet from the South line and 860 feet from the East line (Unit I).

The proposed wells would be drilled within an existing 640-acre gas spacing unit comprised of Section 11. Therefore, Mission also seeks approval to simultaneously dedicate these wells to this spacing unit.

Order No. R-6483, dated October 20, 1980 authorized the simultaneous dedication of the following four wells to a standard 640-acre gas spacing and proration unit for the Jalmat Gas Pool: State A A/C 2 Well No. 14 (API No. 30-025-08873) located 660 feet from the North line and 1980 feet from the East line (Unit B); State A A/C 2 Well No. 36 (API No. 30-025-08878) located 660 feet from the South and West lines (Unit M); State A A/C 2 Well No. 42 (API No. 30-025-08879) located 1980 feet from the North line and 660 feet from the West line (Unit E); and State A A/C 2 Well No. 62 (API No. 30-025-25542) located 1980 feet from the South line and 2310 feet from the West line (Unit K). Order No. R-8575, dated January 4, 1988, authorized the State A A/C 2 Well No. 73 (API No. 30-025-30035) located 990 feet from the South line and 660 feet from the East line (Unit P) to be dedicated to the spacing unit. The State A A/C 2 Well No. 15 (API No. 30-025-08874) located 660 feet from the North line and 1980 feet from the West line (Unit C) was authorized to be dedicated to the spacing unit by Order NSL-3089, dated January 17, 1992. The State A A/C 2 Well No. 75 located 2040 feet from the South line and 660 feet from the West line (Unit L) was authorized to be dedicated to the spacing unit by Order NSL-3089-A (SD), dated September 16, 1999.

The proposed wells are necessary to facilitate the recovery of Jalmat gas reserves. Based on the geological discontinuity in the Jalmat the tighter spacing is anticipated to recover reserves, which cannot be recovered from existing wells. The wells will be completed with modern completion and fracture stimulation techniques which will insure optimal recovery from the discontinuous Yates/Seven Rivers sands. **Exhibit 1** is a Top of Structure Map which shows the proposed well locations in Section 11.

**Exhibit 2** shows recovery of incremental reserves by these infill wells has been confirmed by results of work in the field over the last six years. **Exhibit 3** is an economic analysis that shows the proposed wells will be economic. The work of Raptor Resources, Inc. ("Raptor") and Mission was reviewed from August of 1999. Detailed information for the 20 Raptor and 12 Mission completions are listed on **Exhibit 2**. **Exhibit 4** shows the locations for this work. The average incremental recovery for these projects is 1055 MMCF. The monthly production data for each of these completions was normalized. The data was then averaged to produced a normalized production curve as shown on **Exhibit 5**. A best fit of the production data from the normalized curve, culling out the less reliable data when the well count drops dramatically results in a EUR of 1005 MMCF. Thus, both methods of reserve analysis results in an average well recovery of a little over 1 BCF.



**Exhibits 6, 7, and 8** are cross-sections showing the Yates and Seven Rivers sands vary substantially from well to well in thickness and reservoir quality. Given the variability of the sands, net pay isopach maps have not proven to be useful and are not included. Detailed correlations with newer generation Density-Neutron logs in the Yates and Seven Rivers interval reveal the sands “come and go” and are not blanket reservoirs. Sands that have not adequately produced in the area are expected in each new well bore.

Jalmat producers have been down-spaced on the Mission acreage from 160 acres to 80 acres to 40-acre spacing in several phases since 1989. New gas production and reserves have always been encountered from these efforts, as shown on **Exhibit 9**.

**Exhibits 10, 11, 12 and 13** are the completion data and estimated EUR for the 40-acre locations around the proposed wells. Mission has recently drilled 3 wells in this section in 2005: the State A A/C 2 No. 82 Well, the State A A/C 2 Well No. 83, and the State A A/C 2 Well No. 84. These wells have EUR's of 1120, 516 and 701 MMCF respectively. Well A A/C 2 No. 83 is a direct offset to a Jalmat producer that has accumulated over 11 BCF.

Many of the older wells had only small or no frac treatment and were not perforated or treated in a way to adequately contact every gas-bearing sand. In many cases, the Seven Rivers gas zones were not perforated at all. **Exhibits 10 through 13** show that, aside from the three new Mission wells in Section 11, only two older wells in Section 11 had fracture treatments exceeding 200K#. Mission is using a combination of limited entry perforating and pumping much large frac jobs (300K#) to insure that the entire Jalmat interval is stimulated. The designed fracture half length is approximately 300 feet. Mission believes it is economically better to drill a new well wherever the old casing integrity is questionable, so that a modern frac job can be done. Careful engineering of the frac job can then assure all potential sands are effectively drained.

Approval of this application will result in the efficient recovery of hydrocarbons, prevent waste and will not violate correlative rights.

**Exhibit 14** is OCD Form C-102 depicting the proposed surface locations of the referenced wells.

**Exhibit 15** lists the parties affected by this application. **Exhibit 16** is a base map displaying the offset operators. All proposed locations are at least 660 feet from any lease line. **Exhibit 17** is an affidavit confirming that notice of this application has been provided in accordance with the provisions of Rule 1207(C) [Rule 4(D)] by providing a copy of this application, including all attachments, to the affected parties by certified mail-return receipt requested in accordance with Rule 1207 (B) advising them that if they have an objection to this application it must be filed in writing with the Division's



Santa Fe office within twenty days after filing of this application and proof of notice with the Division.

Also enclosed is a proposed administrative order of the Division.

Sincerely,

A handwritten signature in cursive script that reads "Ocean Munds-Dry".

Ocean Munds-Dry  
Attorney for Mission Resources Corporation

Enclosures



October 11, 2005

**CERTIFIED MAIL**  
**RETURN RECEIPT REQUESTED**

Re: Application of Mission Resources Corporation for administrative approval of infill gas wells and simultaneous dedication of State A A/C 2 Well No. 85, 710' FNL and 785' FEL, State A A/C 2 Well No. 86, 1980 FNL and 1980 FEL, State A A/C 2 Well No. 87, 1980 FNL and 860 FEL, State A A/C 2 Well No. 88, 1980 FSL and 860 FEL, S11-T22S-R36E, Jalmat Gas Pool, Lea County, New Mexico.

Dear Ladies and Gentlemen:

Enclosed is a copy of the above-referenced application which was filed with the New Mexico Oil Conservation Division on this date by Mission Resources Corporation for administrative approval of infill gas wells and simultaneous dedication for its proposed State A A/C 2 Well No. 85 to be drilled at a standard location 710 feet from the North line and 785 feet from the East line (Unit A), the State A A/C 2 Well No. 86 to be drilled 1980 feet from the North line and 1980 feet from the East line (Unit G), the State A A/C 2 Well No. 87, to be drilled 1980 feet from the North Line and 860 feet from the East line (Unit H), and the State A A/C 2 Well No. 88, to be drilled 1980 feet from the South line and 860 feet from the East line (Unit I) in Section 11, Township 22 South, Range 36 East, NMPM, Lea County, New Mexico. Mission seeks to dedicate these wells to an existing 640-acre gas spacing unit comprising Section 11 which is currently dedicated to the State A A/C 2 Well No. 14 (Unit B); State A A/C 2 Well No. (Unit M); State A A/C 2 Well No. 42 (Unit E); State A A/C 2 Well No. 62 (Unit K); the State A A/C 2 Well No. 73 (Unit P); the State A A/C 2 Well No. 15 (Unit C); and the State A A/C 2 Well No. 75 (Unit L).

As an owner of an interest that may be affected by these proposed wells, you may object to this application. Objections must be filed in writing within twenty days from this date at the Division's Santa Fe office that is located at 1220 South Saint Francis Drive, Santa Fe, New Mexico 87505. If no objection is received within this twenty-day period, this application for an unorthodox well location may be approved.

Sincerely,  
  
Ocean Munds-Dry  
Attorney for Mission Resources Corp.

Enclosures

Attention: Ms. Nancy Gatti

*Administrative Order - \_\_\_\_\_*

Dear Ms. Gatti:

Reference is made to your application dated October 3, 2005 for infill gas wells and simultaneous dedication for its proposed State A A/C 2 Well No. 85 to be drilled at a standard location 710 feet from the North line and 785 feet from the East line (Unit A), the State A A/C 2 Well No. 86 to be drilled 1980 feet from the North line and 1980 feet from the East line (Unit G), the State A A/C 2 Well No. 87, to be drilled 1980 feet from the North Line and 860 feet from the East line (Unit H), and the State A A/C 2 Well No. 88, to be drilled 1980 feet from the South line and 860 feet from the East line (Unit I) in Section 11, Township 22 South, Range 36 East, NMPM, Lea County, New Mexico.

The proposed wells will be simultaneously dedicated to an existing 640-acre gas spacing unit comprising Section 11 which is currently dedicated to the State A A/C 2 Well No. 14 (Unit B); State A A/C 2 Well No. (Unit M); State A A/C 2 Well No. 42 (Unit E); State A A/C 2 Well No. 62 (Unit K); the State A A/C 2 Well No. 73 (Unit P); the State A A/C 2 Well No. 15 (Unit C); and the State A A/C 2 Well No. 75 (Unit L).

This application has been duly filed under the provisions of the "Special Pool Rules for the Jalmat Gas Pool," as promulgated by Division Order No. R-8170-P, issued in Case No. 12563 on December 14, 2001.

By authority granted me under the provisions of Rules 4(A), (B), and (D) of the special rules governing the Jalmat Gas Pool, the following described wells within this 640-acre spacing unit is hereby approved:

The State A A/C 2 Well No. 85 to be drilled at a standard location 710 feet from the North line and 785 feet from the East line (Unit A);

The State A A/C 2 Well No. 86 to be drilled 1980 feet from the North line and 1980 feet from the East line (Unit G);

The State A A/C 2 Well No. 87 to be drilled 1980 feet from the North Line and 860 feet from the East line (Unit H); and

The State A A/C 2 Well No. 88 to be drilled 1980 feet from the South line and 860 feet from the East line (Unit I).

Further, Mission is hereby authorized to simultaneously dedicate Jalmat gas production from the above-described wells.

Sincerely,

Mark E. Fesmire, P.E.  
Director

cc: Oil Conservation Division - Hobbs/Artesia



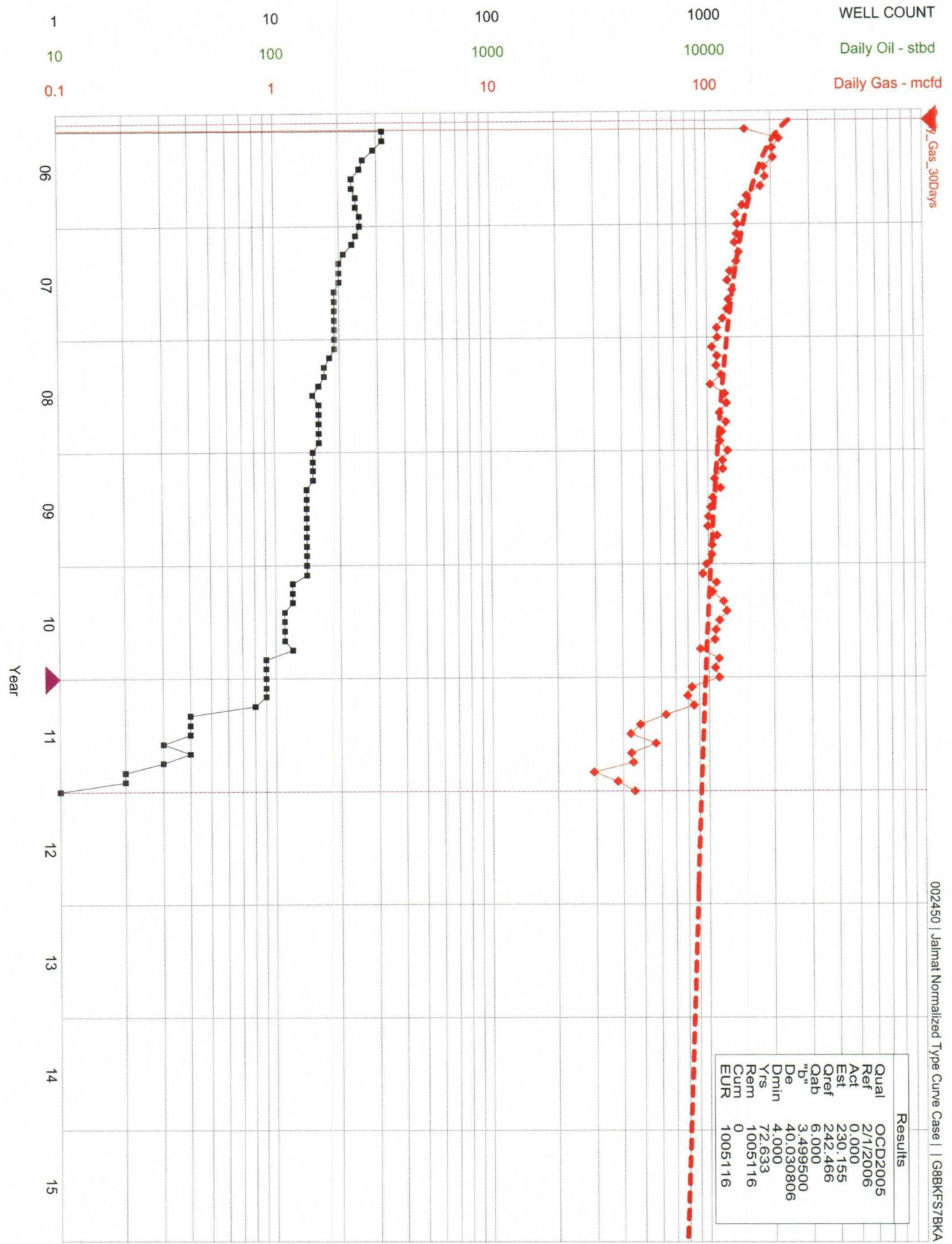
# Jalmat - New Drill - Economics Summary Table

## Input:

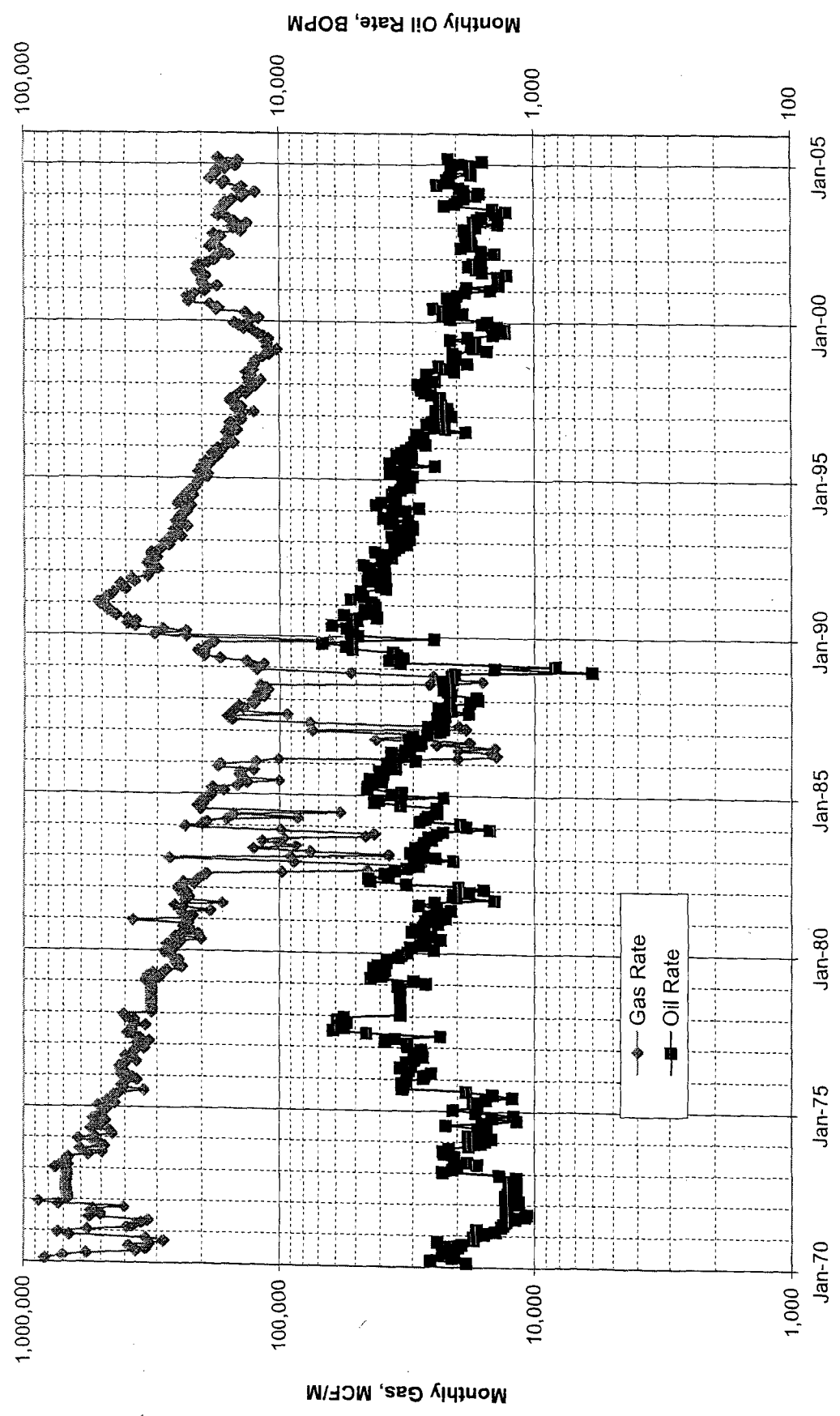
WI = 100 %	RI = 82.5%
Assumed Prod Start Date = 2-1-06	
Initial Rate = 242 mcf/d + 0 bopd	
di = 40%	
n = 3.5	
NGL Yield = 138 bbls/mcf	(from normalized type curve)
1-Gas Shrinkage = 59%	(from normalized type curve)
Plant Takes = 13% of residue gas & ngl's	(from normalized type curve)
Gas Price = \$7.40/mcf flat	(from plant statements)
Oil Price = \$55/stb flat	(from plant statements)
NGL Price = \$39.05/stb flat	(contract with plant)
OP Cost = \$1207/well/mth	(adj for differentials from NYMEX (-\$.60/mcf) )
Assumed Drill Date = 1-1-06	(no oil in economics)
CWC = 607 M\$	(71% of Oil)
	(actuals from los statement)
	(latest AFE est)

## Results:

8/8ths Reserves = 1005 mmcf/g
NPV @ 10% = 1455 M\$
ROR = 66%
Payout = 21 mths
ROI = 9.1



Mission Leases  
Jalmat Field  
Lea County, New Mexico



OFFSET JALMAT WELLS FOR PROPOSED NEW WELL AAC 2 #85 (REDRILL OF AC 2 #13/AGU 189)									
SECTION: 11			SPOT: A		T22S R36E				
JALMAT FIELD, LEA CO, NM									
Well #	Sec/spot	Comp date	Zones	Pay interval	Treatment	Cum MMCF	Cur rate MCFD	Status	EUR
40-acre offsets, Sec 11:									
XTO AGU 189	11A	Feb-39	GRBG	To be redrilled				WIW	
XTO AGU 190	11B	Dec-92	GRBG					P&A 10/98	
AAC2 #14	11B	Mar-64	Y-7R-Q	2839-3601	275K# SD				
		Oct-68	Y-7R	2839-3360	NONE				
		Nov-92	T-Y	2819-2931	274K# SD	1362	2	GAS	1362
AAC2 #18	11G	Sep-53	Y	2810-3870	NITRO	0	0	P&A 10/53	0
				To be redrilled					
XTO AGU 193	11H	Jul-39	GRBG	To be redrilled				P&A 9/02	
40-acre offsets, Sec 1, 2 and 12, operated by XTO:									
XTO AGU 177	1M	May-39	GRBG					WIW	
XTO AGU 175	2O	May-39	GRBG					WIW	
XTO AGU 176	2P	Apr-39	GRBG					WIW	
Mattern E 3	12D	May-97	EUMT (Y)	2754-3109	300K# SD	233	15	GAS	254
AGU 188	12D	Nov-92	GRBG					OIL	
Mattern E 15	12E	Oct-91	EUMT (Queen)	3528-3643				OIL	
AGU 194	12E	Sep-91	GRBG					WIW	
Legend:									
T= Tansil									
Y= Yates									
7R=Seven Rivers									
SE=South Eunice (Queen) Pool									
EUMT=Eumont Pool (Y,7R, & Queen)									
GRBG=Grayburg									



OFFSET JALMAT WELLS FOR PROPOSED NEW WELL AAC 2 #86 (REDRILL OF AC 2 #18)									
SECTION: 11		SPOT:G		T22S R36E					
JALMAT FIELD, LEA CO, NM									
Well #	Sec/spot	Comp date	Zones	Pay interval	Treatment	Cum MMCF	Cur rate MCFD	Status	EUR
40-acre offsets, Sec 11:									
XTO AGU 189	11A	Feb-39	GRBG	To be redrilled				WIW	
XTO AGU 190	11B	Dec-92	GRBG					P&A 10/98	
AAC2 #14	11B	Mar-64	Y-7R-Q	2839-3601	275K# SD				
		Oct-68	Y-7R	2839-3360	NONE				
		Nov-92	T-Y	2819-2931	274K# SD	1362	2	GAS	1362
AAC2 #15	11C	Sep-70	7R-Q	3355-3649	40K# SD				
		Dec-91	Y	2979-3126	172K# SD	676	22	GAS	735
AAC2 #80	11F	Aug-01	Y-7R	2957-3537	50K# SD	0	0	TA 6/03	0
AAC2 #18	11G	Sep-53	Y	2810-3870	NITRO	0	0	P&A 10/53	0
XTO AGU 193	11H	Jul-39	GRBG	To be redrilled				P&A 9/02	
XTO AGU 207	11I	Jun-39	GRBG	To be redrilled				P&A 9/96	
AAC2 #82	11J	May-05	Y-7R	2827-3501	300K# SD	5	140	GAS	1120
AAC2 #62	11K	Jun-77	Y-7R	3034-3577	92K# SD	2938	12	GAS	3139
Legend:									
T= Tansil									
Y= Yates									
7R= Seven Rivers									
SE= South Eunice (Queen) Pool									
EUMT=Eumont Pool (Y,7R, & Queen)									
GRBG=Grayburg									

OFFSET JALMAT WELLS FOR PROPOSED NEW WELL AAC 2 #87(REDRILL OF AC 2 #17/AGU193)									
SECTION: 11		SPOT:H		T22S R36E					
JALMAT FIELD, LEA CO, NM									
Well #	Sec/spot	Comp date	Zones	Pay interval	Treatment	Cum MMCF	Cur rate MCFD	Status	EUR
40-acre offsets, Sec 11:									
XTO AGU 189	11A	Feb-39	GRBG	To be redrilled				WIW	
XTO AGU 190	11B	Dec-92	GRBG					P&A 10/98	
AAC2 #14	11B	Mar-64	Y-7R-Q	2839-3601	275K# SD				
		Oct-68	Y-7R	2839-3360	NONE				
		Nov-92	T-Y	2819-2931	274K# SD	1362	2	GAS	1362
AAC2 #18	11G	Sep-53	Y	2810-3870	NITRO	0	0	P&A 10/53	0
				To be redrilled					
XTO AGU 193	11H	Jul-39	GRBG	To be redrilled				P&A 9/02	
XTO AGU 207	11I	Jun-39	GRBG	To be redrilled				P&A 9/96	
AAC2 #82	11J	May-05	Y-7R	2827-3501	300K# SD	5	140	GAS	1120
40-acre offsets, Sec 12, operated by XTO:									
Mattern E 3	12D	May-97	EUMT (Y)	2754-3109	300K# SD	233	15	GAS	254
AGU 188	12D	Nov-92	GRBG					OIL	
Mattern E 15	12E	Oct-91	EUMT (Queen)	3528-3643				OIL	
AGU 194	12E	Sep-91	GRBG					WIW	
AGU 206	12L	Dec-39	GRBG					OIL	
Legend:									
T= Tansil									
Y=Yates									
7R=Seven Rivers									
SE=South Eunice (Queen) Pool									
EUMT=Eumont Pool (Y, 7R, & Queen)									
GRBG=Grayburg									



OFFSET JALMAT WELLS FOR PROPOSED NEW WELL AAC 2 #88 (REDRILL OF ACC 2 #16/AGU207)									
SECTION: 11			SPOT:I		T22S R36E				
JALMAT FIELD, LEA CO, NM									
Well #	Sec/spot	Comp date	Zones	Pay interval	Treatment	Cum MMCF	Cur rate MCFD	Status	EUR
40-acre offsets, Sec 11:									
AAC2 #18	11G	Sep-53	Y	2810-3870	NITRO	0	0	P&A 10/53	0
XTO AGU 193	11H	Jul-39	GRBG	To be redrilled				P&A 9/02	
XTO AGU 207	11I	Jun-39	GRBG	To be redrilled				P&A 9/96	
AAC2 #82	11J	May-05	Y-7R	2827-3501	300K# SD	5	140	GAS	1120
AAC2 #84	11O	Mar-05	T-Y-7R	2833-3562	300K# SD	7	76	GAS	701
AAC2 #73	11P	Dec-87	Y	2882-3063	87K# SD	41	4	GAS	52
40-acre offsets, Sec 12:									
XTO Mattern E 15	12E	Oct-91	EUMT (Queen)	3528-3643				OIL	
XTO AGU 194	12E	Sep-91	GRBG					WIW	0
XTO AGU 206	12L	Dec-39	GRBG					OIL	0
BP America St. 157 D #15	12M	Mar-93	Y-7R	2787-3397	221K# SD	441	48	GAS	688
Legend:									
T= Tansil									
Y=Yates									
7R=Seven Rivers									
SE=South Eunice (Queen) Pool									
EUMT=Eumont Pool (Y,7R, & Queen)									
GRBG=Grayburg									

DISTRICT I  
1625 N. French Dr., Hobbs, NM 88240

State of New Mexico  
Energy, Minerals & Natural Resources Department

Form C-102  
Revised August 15, 2000  
Submit to Appropriate District Office  
State Lease - 4 Copies  
Fee Lease - 3 Copies

DISTRICT II  
P.O. Drawer DD, Artesia, NM 88211-0719

DISTRICT III  
1000 Rio Brazos Rd., Aztec, NM 87410

OIL CONSERVATION DIVISION  
2040 South Pacheco  
Santa Fe, NM 87505

DISTRICT IV  
2040 South Pacheco, Santa Fe, NM 87505

☐ AMENDED REPORT

WELL LOCATION AND ACREAGE DEDICATION PLAT

API Number	Pool Code	Pool Name
Property Code	Property Name STATE A A/C 2	Well Number 86
OGRID No.	Operator Name MISSION RESOURCES CORPORATION	Elevation 3525'

Surface Location

UL or lot No.	Section	Township	Range	Lot Idn	Feet from the	North/South line	Feet from the	East/West line	County
G	11	22 S	36 E		1980	NORTH	1980	EAST	LEA

Bottom Hole Location If Different From Surface

UL or lot No.	Section	Township	Range	Lot Idn	Feet from the	North/South line	Feet from the	East/West line	County
Dedicated Acres	Joint or Infill	Consolidation Code	Order No.						

NO ALLOWABLE WILL BE ASSIGNED TO THIS COMPLETION UNTIL ALL INTERESTS HAVE BEEN CONSOLIDATED OR A NON-STANDARD UNIT HAS BEEN APPROVED BY THE DIVISION

	<p>OPERATOR CERTIFICATION</p> <p>I hereby certify the the information contained herein is true and complete to the best of my knowledge and belief.</p> <p><i>Nancy K. Gatti</i> Signature Nancy K. Gatti Printed Name Regulatory Manager Title 7-14-05 Date</p> <p>SURVEYOR CERTIFICATION</p> <p>I hereby certify that the well location shown on this plat was plotted from field notes of actual surveys made by me or under my supervision and that the same is true and correct to the best of my belief.</p> <p>June 8, 2005 Date Surveyed Signature &amp; Seal of Professional Surveyor LVA W.O. Num. 2005-0474 Certificate No. MACON McDONALD 12185</p>
--	---

WELL LOCATIONS SHOWN HEREON WITH DIMENSIONS IN PARENTHESIS WERE PROVIDED BY MISSION RESOURCES CORPORATION AND ARE NOT FIELD SURVEYED.



DISTRICT I  
1625 N. French Dr., Hobbs, NM 88240

State of New Mexico  
Energy, Minerals & Natural Resources Department

Form C-102  
Revised August 15, 2000  
Submit to Appropriate District Office  
State Lease - 4 Copies  
Fee Lease - 3 Copies

DISTRICT II  
P.O. Drawer DD, Artesia, NM 88211-0719

DISTRICT III  
1000 Rio Brazos Rd., Aztec, NM 87410

OIL CONSERVATION DIVISION  
2040 South Pacheco  
Santa Fe, NM 87505

DISTRICT IV  
2040 South Pacheco, Santa Fe, NM 87505

☐ AMENDED REPORT

WELL LOCATION AND ACREAGE DEDICATION PLAT

API Number	Pool Code	Pool Name
Property Code	Property Name STATE A A/C 2	Well Number 87
OGRID No.	Operator Name MISSION RESOURCES CORPORATION	Elevation 3513'

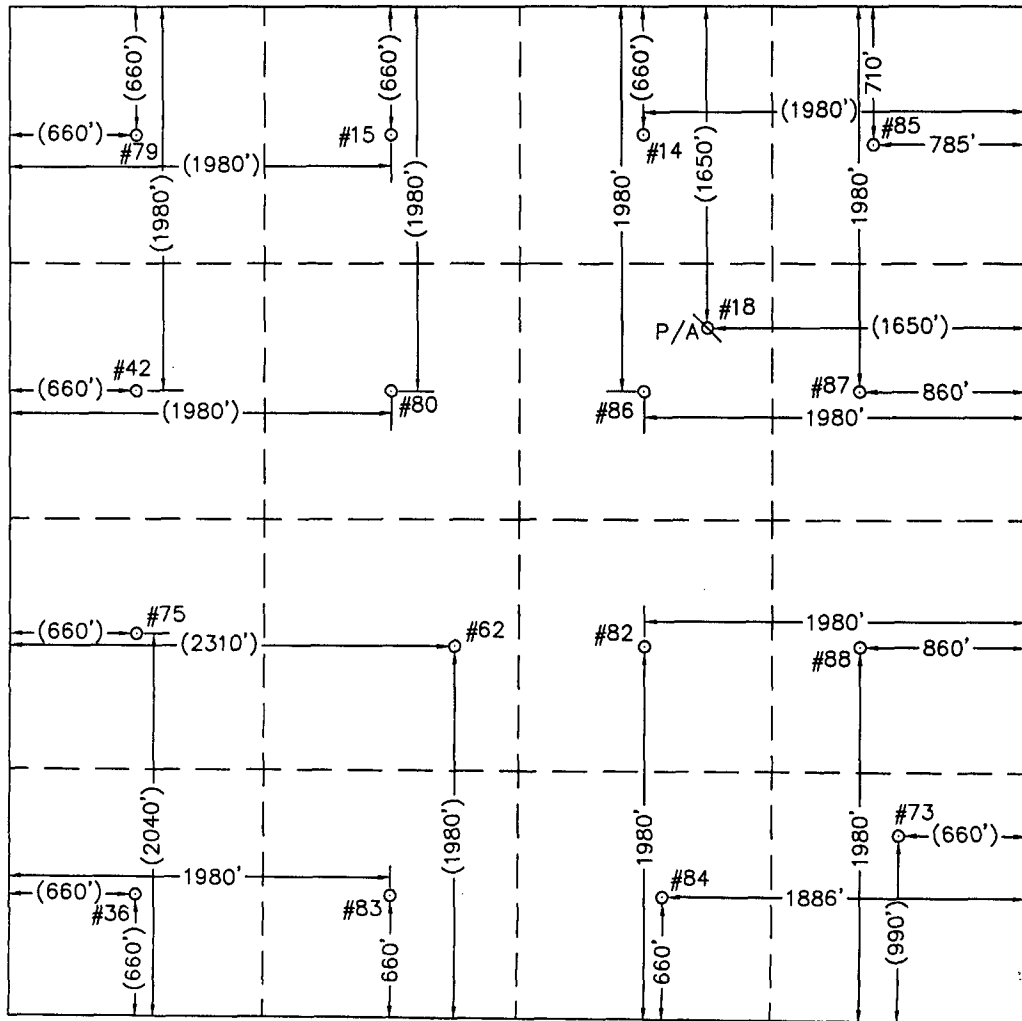
Surface Location

UL or lot No.	Section	Township	Range	Lot Idn	Feet from the	North/South line	Feet from the	East/West line	County
H	11	22 S	36 E		1980	NORTH	860	EAST	LEA

Bottom Hole Location If Different From Surface

UL or lot No.	Section	Township	Range	Lot Idn	Feet from the	North/South line	Feet from the	East/West line	County
Dedicated Acres	Joint or Infill	Consolidation Code	Order No.						

NO ALLOWABLE WILL BE ASSIGNED TO THIS COMPLETION UNTIL ALL INTERESTS HAVE BEEN CONSOLIDATED OR A NON-STANDARD UNIT HAS BEEN APPROVED BY THE DIVISION

	<p>OPERATOR CERTIFICATION</p> <p>I hereby certify the the information contained herein is true and complete to the best of my knowledge and belief.</p> <p><i>Nancy K. Gatti</i> Signature Nancy K. Gatti Printed Name Regulatory Manager Title 7-15-05 Date</p> <p>SURVEYOR CERTIFICATION</p> <p>I hereby certify that the well location shown on this plat was plotted from field notes of actual surveys made by me or under my supervision and that the same is true and correct to the best of my belief.</p> <p>June 8, 2005 Date Surveyed Signature &amp; Seal of Professional Surveyor LVA W.O. Num. 2005-0475 Certificate No. MACON, McDONALD 12185</p>
---	--

WELL LOCATIONS SHOWN HEREON WITH DIMENSIONS IN PARENTHESIS WERE PROVIDED BY MISSION RESOURCES CORPORATION AND ARE NOT FIELD SURVEYED.

DISTRICT I  
1625 N. French Dr., Hobbs, NM 88240

DISTRICT II  
P.O. Drawer DD, Artesia, NM 88211-0719

DISTRICT III  
1000 Rio Brazos Rd., Aztec, NM 87410

DISTRICT IV  
2040 South Pacheco, Santa Fe, NM 87505

State of New Mexico  
Energy, Minerals & Natural Resources Department

Form C-102  
Revised August 15, 2000  
Submit to Appropriate District Office  
State Lease - 4 Copies  
Fee Lease - 3 Copies

OIL CONSERVATION DIVISION  
2040 South Pacheco  
Santa Fe, NM 87505

☐ AMENDED REPORT

WELL LOCATION AND ACREAGE DEDICATION PLAT

API Number	Pool Code	Pool Name
Property Code	Property Name STATE A A/C 2	Well Number 88
OGRID No.	Operator Name MISSION RESOURCES CORPORATION	Elevation 3520'

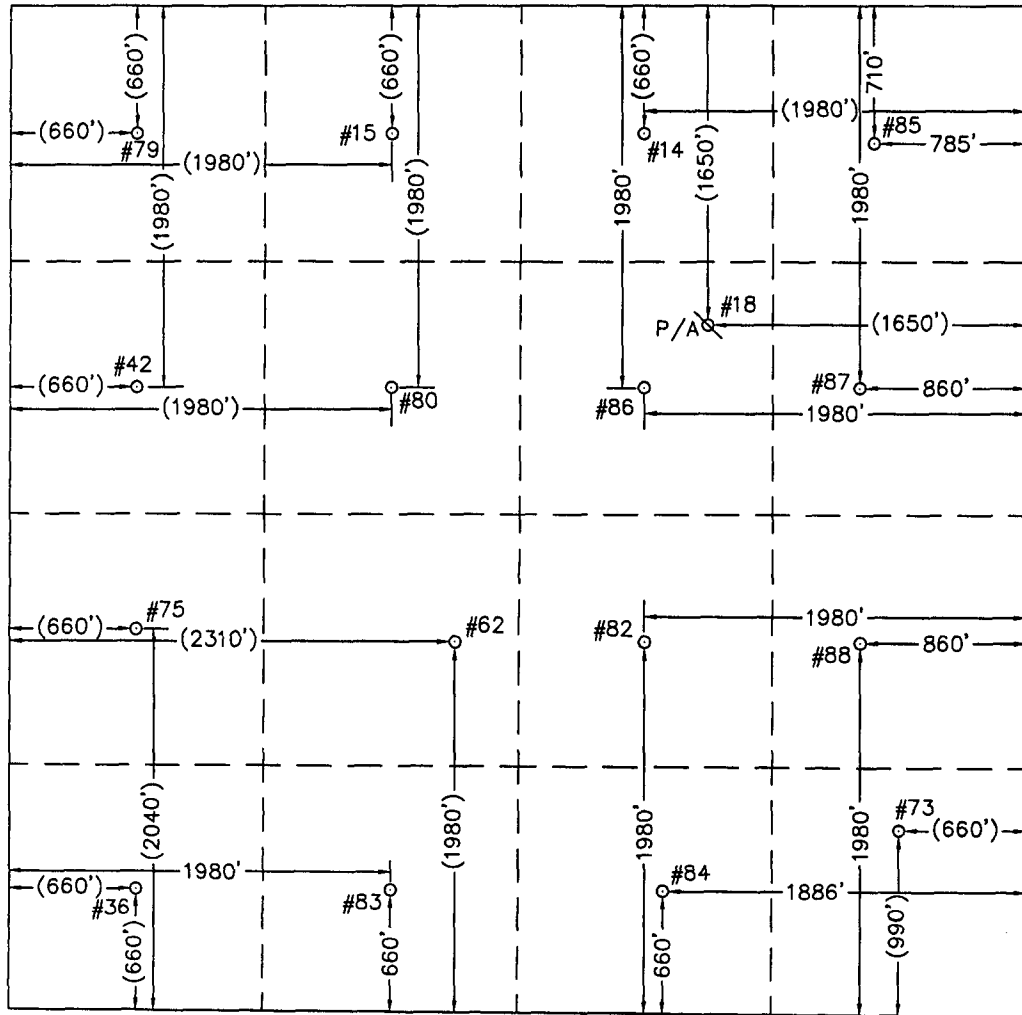
Surface Location

UL or lot No.	Section	Township	Range	Lot Idn	Feet from the	North/South line	Feet from the	East/West line	County
I	11	22 S	36 E		1980	SOUTH	860	EAST	LEA

Bottom Hole Location If Different From Surface

UL or lot No.	Section	Township	Range	Lot Idn	Feet from the	North/South line	Feet from the	East/West line	County
Dedicated Acres	Joint or Infill	Consolidation Code	Order No.						

NO ALLOWABLE WILL BE ASSIGNED TO THIS COMPLETION UNTIL ALL INTERESTS HAVE BEEN CONSOLIDATED OR A NON-STANDARD UNIT HAS BEEN APPROVED BY THE DIVISION

	<p><b>OPERATOR CERTIFICATION</b></p> <p>I hereby certify the the information contained herein is true and complete to the best of my knowledge and belief.</p> <p><i>Nancy K. Gatti</i> Signature Nancy K. Gatti Printed Name Regulatory Manager Title 7-14-05 Date</p> <p><b>SURVEYOR CERTIFICATION</b></p> <p>I hereby certify that the well location shown on this plat was plotted from field notes of actual surveys made by me or under my upervision and that the same is true and orrect to the best of my belief.</p> <p>June 8, 2005 Date Surveyed Signature &amp; Seal of Professional Surveyor W.O. Num. 2005-0476 Certificate No. MACON, McDONALD 12185</p>
--	--

WELL LOCATIONS SHOWN HEREON WITH DIMENSIONS IN PARENTHESIS WERE PROVIDED BY MISSION RESOURCES CORPORATION AND ARE NOT FIELD SURVEYED.

DISTRICT II  
P.O. Drawer DD, Artesia, NM 88211-0719

DISTRICT III  
1000 Rio Brazos Rd., Aztec, NM 87410

DISTRICT IV  
2040 South Pacheco, Santa Fe, NM 87505

OIL CONSERVATION DIVISION  
2040 South Pacheco  
Santa Fe, NM 87505

## EXHIBIT 14

☐ AMENDED REPORT

# WELL LOCATION AND ACREAGE DEDICATION PLAT

API Number	Pool Code	Pool Name
Property Code	Property Name STATE A A/C 2	Well Number 85
OGRID No.	Operator Name MISSION RESOURCES CORPORATION	Elevation 3513'

### Surface Location

UL or lot No.	Section	Township	Range	Lot Idn	Feet from the	North/South line	Feet from the	East/West line	County
A	11	22 S	36 E		710	NORTH	785	EAST	LEA

## Bottom Hole Location If Different From Surface

UL or lot No.	Section	Township	Range	Lot Idn	Feet from the	North/South line	Feet from the	East/West line	County
Dedicated Acres	Joint or Infill	Consolidation Code	Order No.						

NO ALLOWABLE WILL BE ASSIGNED TO THIS COMPLETION UNTIL ALL INTERESTS HAVE BEEN CONSOLIDATED OR A NON-STANDARD UNIT HAS BEEN APPROVED BY THE DIVISION

OPERATOR CERTIFICATION

I hereby certify the the information contained herein is true and complete to the best of my knowledge and belief.

*Nancy K. Gatti*  
Signature  
Nancy K. Gatti  
Printed Name  
Regulatory Manager  
Title  
7-14-05  
Date

SURVEYOR CERTIFICATION

I hereby certify that the well location shown on this plat was plotted from field notes of actual surveys made by me or under my supervision and that the same is true and correct to the best of my belief.

June 10, 2005  
Date Surveyed  
Signature & Seal of Professional Surveyor  
LVA  
W.O. Num. 2005-0473  
Certificate No. MAON McDONALD 12185

WELL LOCATIONS SHOWN HEREON WITH DIMENSIONS IN PARENTHESIS WERE PROVIDED BY MISSION RESOURCES CORPORATION AND ARE NOT FIELD SURVEYED.

**EXHIBIT 15**

**Affected Parties**

**State A A/C 2 Well No. 85  
Section 11, Township 22 South, Range 36 East, NMPM  
Lea County, New Mexico.**

XTO Energy, Inc.  
810 Houston Street #2000  
Fort Worth, TX 76102-6298

OXY USA, Inc.  
P. O. Box 4294  
Houston, TX 77210-4294

Conoco Phillips  
Post Office Box 2197  
Houston, TX 77079

Marathon Oil Co.  
5555 San Felipe Road  
Houston, Texas 77056-2725

Gruy Petroleum Management Co.  
600 E. Colinas Blvd. #1100  
Irving, Texas 75039

BP America Production Co.  
501 Westlake Park Boulevard  
Houston, TX 77079

**EXHIBIT 17**

**BEFORE THE  
OIL CONSERVATION DIVISION  
NEW MEXICO ENERGY, MINERALS AND  
NATURAL RESOURCES DEPARTMENT**

**IN THE MATTER OF THE APPLICATION OF MISSION RESOURCES CORPORATION FOR ADMINISTRATIVE APPROVAL OF INFILL GAS WELLS AND SIMULTANEOUS DEDICATION OF STATE A A/C 2 WELL NO. 85, 710' FNL AND 785' FEL, STATE A A/C 2 WELL NO. 86, 1980' FNL AND 1980' FEL, STATE A A/C 2 WELL NO. 87, 1980' FNL AND 860' FEL, STATE A/C 2 WELL NO. 88, 1980' FSL AND 860' FEL, S11-T22S-R36E, JALMAT GAS POOL, LEA COUNTY, NEW MEXICO.**

**AFFIDAVIT**

STATE OF NEW MEXICO       )  
  ) ss.  
COUNTY OF SANTA FE       )

Ocean Munds-Dry, attorney in fact and authorized representative of Mission Resources Corporation, the Applicant herein, being first duly sworn, upon oath, states that notice of the above-referenced Application was mailed to the addresses shown on Exhibit "15" attached hereto.

Ocean Munds-Dry  
Ocean Munds-Dry

SUBSCRIBED AND SWORN to before this 11<sup>th</sup> day of October 2005 by Ocean Munds-Dry.

Barbara Ann Hard  
Notary Public

My Commission Expires: 3/28/08