

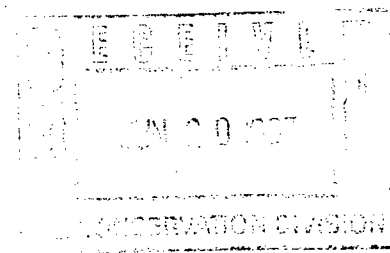
DHC-1566



United States Department of the Interior

BUREAU OF LAND MANAGEMENT

Farmington District Office
1235 La Plata Highway, Suite A
Farmington, New Mexico 87401



IN REPLY REFER TO:

San Juan 32-9 Unit (PC PA)
3162.7-3 (07400)

June 3, 1997

Ms. Peggy Bradfield
Regulatory/Compliance Administrator
Burlington Resources
P.O. Box 4289
Farmington, NM 87499-4289

RE: Downhole Commingling
San Juan 32-9 Unit
San Juan County, New Mexico

Dear Ms. Bradfield:

We have received your correspondences requesting approval for downhole commingling of the Blanco Pictured Cliffs and the Blanco Mesaverde in the wells listed below. After review, we hereby approve your application for downhole commingling for the wells listed. Approval is conditional on submittal of allocation factors for each well.

WELL	LOCATION	LEASE
No. 23A	1600' FNL & 1490' FWL, Section 5, T. 31 N., R. 9 W.	SF-078509
No. 47	1090' FSL & 890' FWL, Section 4, T. 31 N., R. 9 W.	Fee
No. 24	990' FNL & 990' FEL, Section 5, T. 31 N., R. 9 W.	Fee
No. 24A	1695' FSL & 830' FEL, Section 5, T. 31 N., R. 9 W.	Fee

If you have further questions regarding this matter, please contact Brian W. Davis at (505) 599-6367 or 599-8900.

Sincerely,

/s/ Duane W. Spencer

Duane W. Spencer
Team Leader, Petroleum Management

bcc:

NMOCD, Santa Fe

DOMR

Suspense (Brian & Afmss Data Entry)

Well File (No. 23A SJ 32-9 Unit, 1600' FNL & 1490' FWL, Section 5, T. 31 N., R. 9 W, SF-078509.

MV PA

PC PA

07400:BWDavis:06/03/97:x6367:BurlingtonSanJuan329DHC.ltr