

|                 |             |                                      |              |          |                       |
|-----------------|-------------|--------------------------------------|--------------|----------|-----------------------|
| DATE IN 6/30/03 | SUSPENSE NA | ENGINEER <del>ME</del> <sup>ME</sup> | LOGGED IN LR | TYPE NSP | APP NO. PLR0318227460 |
|-----------------|-------------|--------------------------------------|--------------|----------|-----------------------|

ABOVE THIS LINE FOR DIVISION USE ONLY

**NEW MEXICO OIL CONSERVATION DIVISION**  
 - Engineering Bureau -  
 1220 South St. Francis Drive, Santa Fe, NM 87505



**RECEIVED**  
 JUN 30 2003  
**OIL CONSERVATION DIVISION**

**ADMINISTRATIVE APPLICATION CHECKLIST**

THIS CHECKLIST IS MANDATORY FOR ALL ADMINISTRATIVE APPLICATIONS FOR EXCEPTIONS TO DIVISION RULES AND REGULATIONS WHICH REQUIRE PROCESSING AT THE DIVISION LEVEL IN SANTA FE

**Application Acronyms:**

[NSL-Non-Standard Location] [NSP-Non-Standard Proration Unit] [SD-Simultaneous Dedication]  
 [DHC-Downhole Commingling] [CTB-Lease Commingling] [PLC-Pool/Lease Commingling]  
 [PC-Pool Commingling] [OLS - Off-Lease Storage] [OLM-Off-Lease Measurement]  
 [WFX-Waterflood Expansion] [PMX-Pressure Maintenance Expansion]  
 [SWD-Salt Water Disposal] [IPI-Injection Pressure Increase]  
 [EOR-Qualified Enhanced Oil Recovery Certification] [PPR-Positive Production Response]

- [1] **TYPE OF APPLICATION** - Check Those Which Apply for [A]  
 [A] Location - Spacing Unit - Simultaneous Dedication  
☐ NSL ☒ NSP ☐ SD
- Check One Only for [B] or [C]  
 [B] Commingling - Storage - Measurement  
☐ DHC ☐ CTB ☐ PLC ☐ PC ☐ OLS ☐ OLM
- [C] Injection - Disposal - Pressure Increase - Enhanced Oil Recovery  
☐ WFX ☐ PMX ☐ SWD ☐ IPI ☐ EOR ☐ PPR
- [D] Other: Specify \_\_\_\_\_
- [2] **NOTIFICATION REQUIRED TO:** - Check Those Which Apply, or Does Not Apply  
 [A] ☐ Working, Royalty or Overriding Royalty Interest Owners  
 [B] ☐ Offset Operators, Leaseholders or Surface Owner  
 [C] ☐ Application is One Which Requires Published Legal Notice  
 [D] ☐ Notification and/or Concurrent Approval by BLM or SLO  
U.S. Bureau of Land Management - Commissioner of Public Lands, State Land Office  
 [E] ☐ For all of the above, Proof of Notification or Publication is Attached, and/or,  
 [F] ☐ Waivers are Attached

[3] **SUBMIT ACCURATE AND COMPLETE INFORMATION REQUIRED TO PROCESS THE TYPE OF APPLICATION INDICATED ABOVE.**

[4] **CERTIFICATION:** I hereby certify that the information submitted with this application for administrative approval is **accurate** and **complete** to the best of my knowledge. I also understand that **no action** will be taken on this application until the required information and notifications are submitted to the Division.

**Note:** Statement must be completed by an individual with managerial and/or supervisory capacity.

Denise Pinkerton Denise Pinkerton Regulatory Specialist 6-25-03  
 Print or Type Name Signature Title Date  
 LeakeJD@Chesapeake.com  
 e-mail Address

June 25, 2003

New Mexico Oil Conservation Division  
1220 South St. Francis Dr.  
Santa Fe, NM 87505

Attention: Michael Stogner

RE: NON-STANDARD PRORATION REQUEST

Dear Sirs,

*Chevron U.S.A. Inc. respectfully requests approval for a non-standard proration unit of 120 acres for the Eunice King #13, located in UL A, 554' FNL, & 554' FEL, Sec 28, T-21-S, & R-37-E, and Eunice King #14, located in UL G, 1874' FNL, & 2086' FEL, Lea County, New Mexico. These wells are gas wells. The NSP unit will consist of Unit Letters A, B, & G. Unit Letter H belongs to well number 8 which was just recompleted as an oil well, and should be a standard 40 acre oil unit.*

*Attached, are plats showing the 3 wells.*

*Thanks for your consideration in this matter. Any questions should be directed to J. Denise Pinkerton at (432) 687-7375, or Mike Howell at (432) 687-7516.*

Sincerely,



J. Denise Pinkerton  
Regulatory Specialist  
ChevronTexaco

Cc: NMOCD in Hobbs, NM

06844

**DISTRICT I**

P.O. Box 1980, Hobbs, NM 88241-1980

**DISTRICT II**

P.O. Box Drawer DD, Artesia, NM 88211-0719

**DISTRICT III**

1000 Rio Brazos Rd., Aztec, NM 87410

**DISTRICT IV**

P.O. Box 2088, Santa Fe, NM 87504-2088

**State of New Mexico****Energy, Minerals and Natural Resources Department****OIL CONSERVATION DIVISION**

P.O. Box 2088

Santa Fe, New Mexico 87504-2088

Form C-102

Revised February 10, 1999

Instructions on back

Submit to Appropriate District Office

State Lease - 4 Copies

Fee Lease - 3 Copies

☐ AMENDED REPORT**WELL LOCATION AND ACREAGE DEDICATION PLAT**

|   |   |  |
|---|---|--|
| <sup>1</sup> API Number<br>30-025-06849 | <sup>2</sup> Pool Code<br>86440               | <sup>3</sup> Pool Name<br>TUBB OIL & GAS (PRO GAS) |
| <sup>4</sup> Property Code              | <sup>5</sup> Property Name<br>EUNICE KING     | <sup>6</sup> Well No.<br>13                        |
| <sup>7</sup> OGRID Number<br>4323       | <sup>8</sup> Operator Name<br>CHEVRON USA INC | <sup>9</sup> Elevation<br>3435' GL                 |

<sup>10</sup> Surface Location

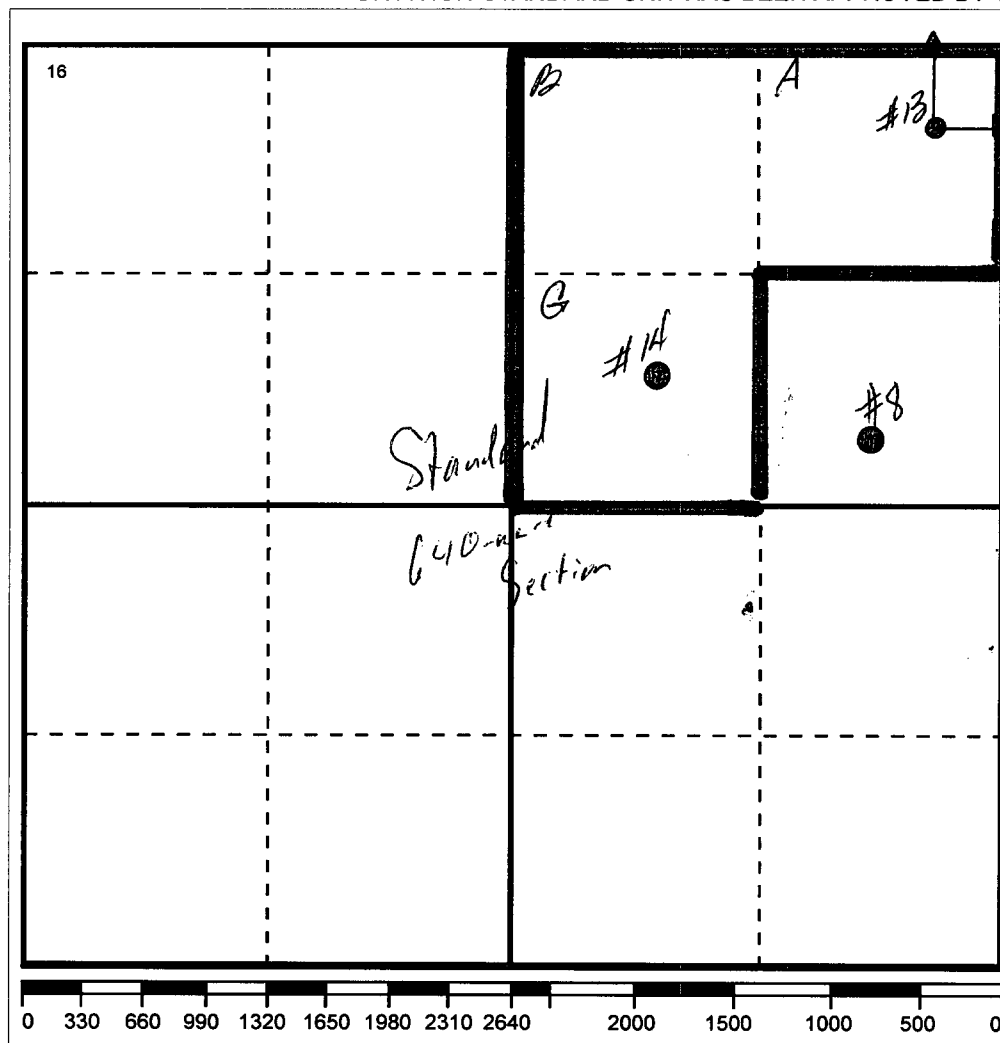
| UI or lot no | Section | Township | Range | Lot.Idn | Feet From The | North/South Line | Feet From The | East/West Line | County |
|--------------|---------|----------|-------|---------|---------------|------------------|---------------|----------------|--------|
| A            | 28      | 21-S     | 37-E  |         | 554'          | NORTH            | 554'          | EAST           | LEA    |

<sup>11</sup> Bottom Hole Location If Different From Surface

| UI or lot no. | Section | Township | Range | Lot.Idn | Feet From The | North/South Line | Feet From The | East/West Line | County |
|---------------|---------|----------|-------|---------|---------------|------------------|---------------|----------------|--------|
|               |         |          |       |         |               |                  |               |                |        |

|                                     |                                     |                                  |                         |
|-------------------------------------|-------------------------------------|----------------------------------|-------------------------|
| <sup>12</sup> Dedicated Acre<br>120 | <sup>13</sup> Joint or Infill<br>No | <sup>14</sup> Consolidation Code | <sup>15</sup> Order No. |
|-------------------------------------|-------------------------------------|----------------------------------|-------------------------|

NO ALLOWABLE WILL BE ASSIGNED TO THIS COMPLETION UNTIL ALL INTERESTS HAVE BEEN CONSOLIDATED  
OR A NON-STANDARD UNIT HAS BEEN APPROVED BY THE DIVISION

**17 OPERATOR CERTIFICATION**

I hereby certify that the information contained herein is true and complete to the best of my knowledge and belief

Signature

Printed Name

Denise Leake

Position

Regulatory Specialist

Date

6/25/2003

**18 SURVEYOR CERTIFICATION**

I hereby certify that the well location shown on this plat was plotted from field notes of actual surveys made by me or under my supervision, and that the same is true and correct to the best of my knowledge and belief.

Date Surveyed

Signature & Seal of  
Professional Surveyor

Certificate No.

**DISTRICT I**

P.O. Box 1980, Hobbs, NM 88241-1980

**DISTRICT II**

P.O. Box Drawer DD, Artesia, NM 88211-0719

**DISTRICT III**

1000 Rio Brazos Rd., Aztec, NM 87410

**DISTRICT IV**

P.O. Box 2088, Santa Fe, NM 87504-2088

**State of New Mexico****Energy, Minerals and Natural Resources Department****OIL CONSERVATION DIVISION**

P.O. Box 2088

Santa Fe, New Mexico 87504-2088

Form C-102

Revised February 10, 1999

Instructions on back

Submit to Appropriate District Office

State Lease - 4 Copies

Fee Lease - 3 Copies

☐ AMENDED REPORT**WELL LOCATION AND ACREAGE DEDICATION PLAT**

|   |   |  |
|---|---|--|
| <sup>1</sup> API Number<br>30-025-06851 | <sup>2</sup> Pool Code<br>86440               | <sup>3</sup> Pool Name<br>TUBB OIL & GAS (PRO GAS) |
| <sup>4</sup> Property Code              | <sup>5</sup> Property Name<br>EUNICE KING     | <sup>6</sup> Well No.<br>14                        |
| <sup>7</sup> OGRID Number<br>4323       | <sup>8</sup> Operator Name<br>CHEVRON USA INC | <sup>9</sup> Elevation<br>3435' GL                 |

<sup>10</sup> Surface Location

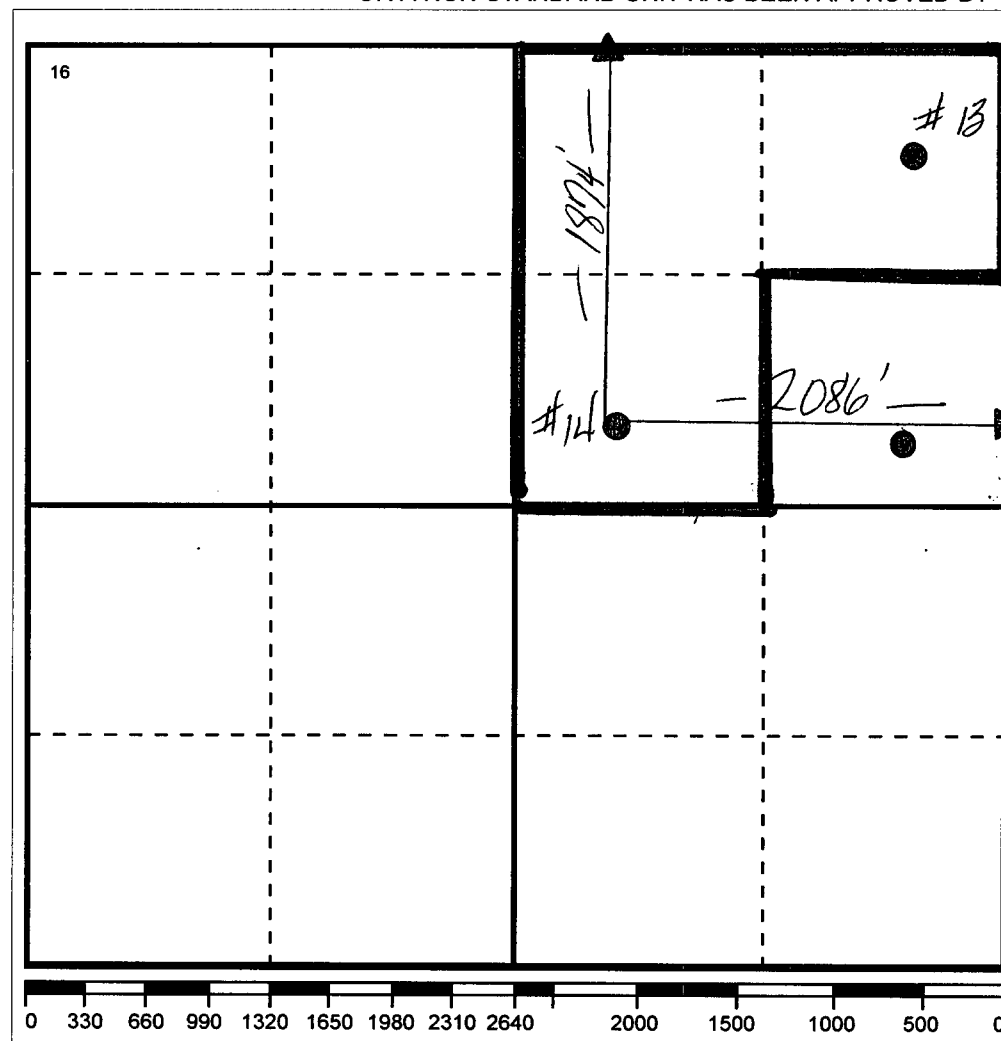
| UI or lot no | Section | Township | Range | Lot.Idn | Feet From The | North/South Line | Feet From The | East/West Line | County |
|--------------|---------|----------|-------|---------|---------------|------------------|---------------|----------------|--------|
| G            | 28      | 21-S     | 37-E  |         | 1874'         | NORTH            | 2086'         | EAST           | LEA    |

<sup>11</sup> Bottom Hole Location If Different From Surface

| UI or lot no. | Section | Township | Range | Lot.Idn | Feet From The | North/South Line | Feet From The | East/West Line | County |
|---------------|---------|----------|-------|---------|---------------|------------------|---------------|----------------|--------|
|               |         |          |       |         |               |                  |               |                |        |

|                                     |                                     |                                  |                         |
|-------------------------------------|-------------------------------------|----------------------------------|-------------------------|
| <sup>12</sup> Dedicated Acre<br>120 | <sup>13</sup> Joint or Infill<br>No | <sup>14</sup> Consolidation Code | <sup>15</sup> Order No. |
|-------------------------------------|-------------------------------------|----------------------------------|-------------------------|

NO ALLOWABLE WILL BE ASSIGNED TO THIS COMPLETION UNTIL ALL INTERESTS HAVE BEEN CONSOLIDATED  
OR A NON-STANDARD UNIT HAS BEEN APPROVED BY THE DIVISION

**17 OPERATOR CERTIFICATION**

I hereby certify that the information contained herein is true and complete to the best of my knowledge and belief

Signature

Printed Name

Denise Leake

Positio

Regulatory Specialist

Date

6/25/2003

**18 SURVEYOR CERTIFICATION**

I hereby certify that the well location shown on this plat was plotted from field notes of actual surveys made by me or under my supervision, and that the same is true and correct to the best of my knowledge and belief.

Date Surveyed

Signature & Seal of  
Professional Surveyor

Certificate No.

**DISTRICT I**

P.O. Box 1980, Hobbs, NM 88241-1980

**DISTRICT II**

P.O. Box Drawer DD, Artesia, NM 88211-0719

**DISTRICT III**

1000 Rio Brazos Rd., Aztec, NM 87410

**DISTRICT IV**

P.O. Box 2088, Santa Fe, NM 87504-2088

**State of New Mexico**

Energy, Minerals and Natural Resources Department

**OIL CONSERVATION DIVISION**

P.O. Box 2088

Santa Fe, New Mexico 87504-2088

Form C-102

Revised February 10, 1999

Instructions on bac

Submit to Appropriate District Office

State Lease - 4 Copie

Fee Lease - 3 Copie

☐ AMENDED REPORT**WELL LOCATION AND ACREAGE DEDICATION PLAT**

|   |   |  |
|---|---|--|
| <sup>1</sup> API Number<br>30-025-06844 | <sup>2</sup> Pool Code<br>60240               | <sup>3</sup> Pool Name<br>TUBB OIL & GAS (OIL) |
| <sup>4</sup> Property Code              | <sup>5</sup> Property Name<br>EUNICE KING     | <sup>6</sup> Well No.<br>8                     |
| <sup>7</sup> OGRID Number<br>4323       | <sup>8</sup> Operator Name<br>CHEVRON USA INC | <sup>9</sup> Elevation<br>3435' GL             |

<sup>10</sup> Surface Location

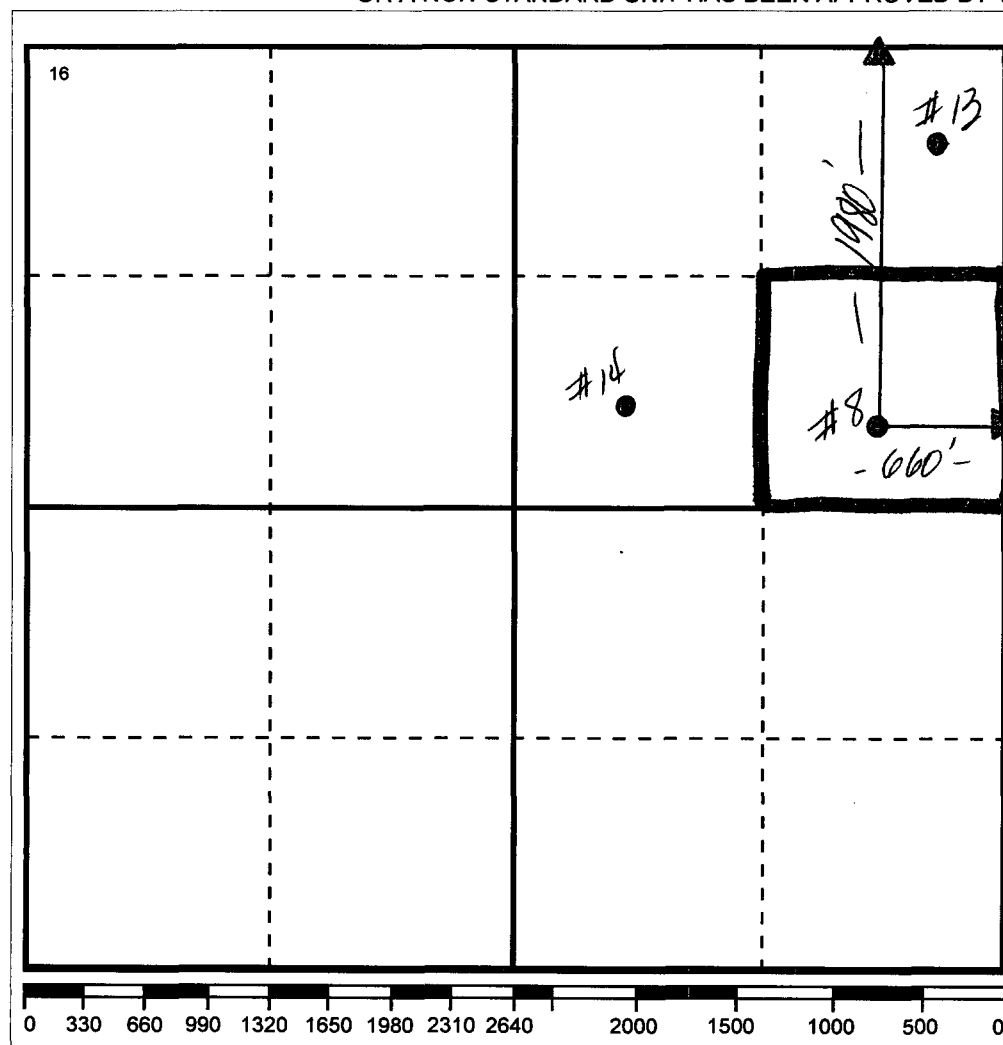
| UI or lot no | Section | Township | Range | Lot.Idn | Feet From The | North/South Line | Feet From The | East/West Line | County |
|--------------|---------|----------|-------|---------|---------------|------------------|---------------|----------------|--------|
| H            | 28      | 21-S     | 37-E  |         | 1980'         | NORTH            | 660'          | EAST           | LEA    |

<sup>11</sup> Bottom Hole Location If Different From Surface

| UI or lot no. | Section | Township | Range | Lot.Idn | Feet From The | North/South Line | Feet From The | East/West Line | County |
|---------------|---------|----------|-------|---------|---------------|------------------|---------------|----------------|--------|
|---------------|---------|----------|-------|---------|---------------|------------------|---------------|----------------|--------|

|                                    |                                     |                                  |                         |
|------------------------------------|-------------------------------------|----------------------------------|-------------------------|
| <sup>12</sup> Dedicated Acre<br>40 | <sup>13</sup> Joint or Infill<br>No | <sup>14</sup> Consolidation Code | <sup>15</sup> Order No. |
|------------------------------------|-------------------------------------|----------------------------------|-------------------------|

NO ALLOWABLE WILL BE ASSIGNED TO THIS COMPLETION UNTIL ALL INTERESTS HAVE BEEN CONSOLIDATED  
OR A NON-STANDARD UNIT HAS BEEN APPROVED BY THE DIVISION

**17 OPERATOR CERTIFICATION**

I hereby certify that the information contained herein is true and complete to the best of my knowledge and belief

Signature

Printed Name

Denise Leake

Positio

Regulatory Specialist

Date

6/25/2003

**18 SURVEYOR CERTIFICATION**

I hereby certify that the well location shown on this plat was plotted from field notes of actual surveys made by me or under my supervision, and that the same is true and correct to the best of my knowledge and belief.

Date Surveyed

Signature & Seal of  
Professional Surveyor

Certificate No.



# NEW MEXICO ENERGY, MINERALS and NATURAL RESOURCES DEPARTMENT

**GARY E. JOHNSON**  
Governor  
**Jennifer A. Salisbury**  
Cabinet Secretary

December 12, 2000

**Lori Wrotenbery**  
Director  
Oil Conservation Division

**Chevron U.S.A., Inc.**  
**P. O. Box 1150**  
**Midland, Texas 79702**  
**Attention: A. M. Howell, Sr. Petroleum Engineer**

**RE: NMOCD Correspondence Reference No. SD-00-05:** *Tubb Oil and Gas Pool development within an existing standard 160-acre gas spacing and proration unit ("GPU") comprising the NE/4 of Section 28, Township 21 South, Range 37 East, NMPM, Lea County, New Mexico.*

Dear Mr. Howell:

Reference is made to your letter dated November 8, 2000 notifying the New Mexico Oil Conservation Division's ("Division") Santa Fe office of Chevron U.S.A., Inc.'s plans for further Tubb gas development within the existing 160-acre standard gas spacing and proration unit ("GPU") comprising the NE/4 of Section 28, Township 21 South, Range 37 East, NMPM, Lea County, New Mexico.

The rules currently governing spacing, well locations, and allowables for the Tubb Oil and Gas Pool include, but not necessarily limited to:

- (a) *"Special Rules and Regulations for the Tubb Oil and Gas Pool"*, as promulgated by Division Order No. R-8170, dated March 28, 1986, as amended by Division Orders No. R-8170-H, dated December 10, 1990, and R-10987, dated May 7, 1998; and
- (b) Division Rules 104 and 605.

It is our understanding that gas production attributed to the Tubb Oil and Gas Pool within this 160-acre GPU will to be simultaneously dedicated to the following three wells:

- Eunice King Well No. 13 (API No. 30-025-06849), located at an unorthodox gas well location 554 feet from the North and East lines (Unit A) of Section 28 [this location was "grandfathered" in as a standard Tubb gas well location for the subject 160-acre GPU pursuant to Rule 2 of the *"Special Rules and Regulations for the Tubb Gas Pool"*, as promulgated by Division Order No. R-586, issued in Case No. 728 and dated April 11, 1955];

SD-00-05

Chevron U.S.A., Inc.

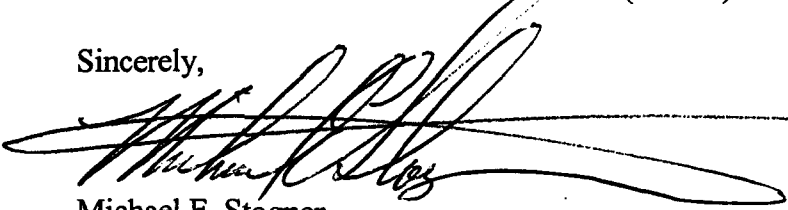
December 12, 2000

Page 2

---

- Eunice King Well No. 14 (**API No. 30-025-06851**), located at an unorthodox gas well location [approved by Division Administrative Order NSL-4234 (SD)] 1874 feet from the North line and 2086 feet from the East line (Unit G) of Section 28; and
- Eunice King Well No. 8 (**API No. 30-025-06844**), located at a standard infill gas well location 1980 feet from the North line and 660 feet from the East line (Unit H) of Section 28.

Sincerely,

A large, stylized handwritten signature in black ink, appearing to read 'Michael E. Stogner', is written over a horizontal line.

Michael E. Stogner  
Chief Hearing Officer/Engineer

LW/mes

cc: New Mexico Oil Conservation Division - Hobbs  
File: NSL-4234(SD)



NEW MEXICO ENERGY, MINERALS  
& NATURAL RESOURCES DEPARTMENT

OIL CONSERVATION DIVISION  
2040 South Pacheco Street  
Santa Fe, New Mexico 87505  
(505) 827-7131

March 17, 1999

Chevron U.S.A. Inc.  
P. O. Box 1150  
Midland, Texas 79702-1150  
Attention: Alan W. Bohling

*Administrative Order NSL-4234(SD)*

Dear Mr. Bohling:

Reference is made to your application dated February 18, 1999, which was received by the New Mexico Oil Conservation Division ("Division") in Santa Fe on February 25, 1999, for an unorthodox Tubb gas well location within an existing standard 160-acre gas spacing and proration unit ("GPU") for the Tubb Oil and Gas Pool comprising the NE/4 of Section 28, Township 21 South, Range 37 East, NMPM, Lea County, New Mexico. This GPU is currently dedicated to Chevron U.S.A. Inc.'s Eunice King Well No. 13 (API No. 30-025-06849) located at an unorthodox gas well location 554 feet from the North and East lines (Unit A) of Section 28, which was "grandfathered" in as a standard Tubb gas well location for the subject 160-acre GPU pursuant to Rule 2 of the *"Special Rules and Regulations for the Tubb Gas Pool,"* as promulgated by Division Order No. R-586, issued in Case No. 728 dated April 11, 1955.

It is our understanding that the subject well in this application, the Eunice King Well No. 14 (API No. 30-025-06851), was originally drilled by Gulf Oil Corporation in 1949 to a total depth of 7,665 feet and completed in the Hare-Simpson Pool at a standard oil well location 1874 feet from the North line and 2086 feet from the East line (Unit G) of Section 28. In 1990 Chevron recompleted this well as an oil well into the Blinebry Oil and Gas Pool. It is further understood that Chevron now intends to recomplete this well up-hole into the Tubb Oil and Gas Pool.

Pursuant to Rule 2(b)1 of the *"General Rules for the Prorated Gas Pools of New Mexico/Special Rules and Regulations for the Tubb Oil and Gas Pool,"* as promulgated by Division Order No. R-8170, as amended, the location of the Eunice King Well No. 14 is considered to be unorthodox.

By authority granted me under the provisions of Rule 2(d) of the special rules for the Tubb Oil and Gas Pool, the unorthodox location of the Eunice King Well No. 14 is hereby approved.

Also, you are hereby authorized to simultaneously dedicate Tubb gas production from the Eunice King Well No. 14 with the Eunice King Well No. 13. Furthermore, you are hereby



Administrative Order NSL-4234(SD)

Chevron U.S.A. Inc.

March 17, 1999

Page 2

---

permitted to produce the allowable assigned the subject 160-acre GPU from both wells in any proportion.

Sincerely,

A handwritten signature in cursive script, appearing to read "Lori Wrotenbery / Liz MES". The signature is written in dark ink and is somewhat stylized.

Lori Wrotenbery  
Director

LW/MES/kv

cc: New Mexico Oil Conservation Division - Hobbs



STATE OF NEW MEXICO  
ENERGY, MINERALS AND NATURAL RESOURCES DEPARTMENT  
OIL CONSERVATION DIVISION



BRUCE KING  
GOVERNOR

ANITA LOCKWOOD  
CABINET SECRETARY

February 16, 1993

POST OFFICE BOX 2088  
STATE LAND OFFICE BUILDING  
SANTA FE, NEW MEXICO 87504  
(505) 827-5800

Chevron USA Producing Company  
Attention: Lloyd V. Trautman, Sr. Petroleum Engineer  
P.O. Box 1150  
Midland, TX 79702

*Administrative Order NSP-1621-A(L)*

Dear Mr. Trautman:

By Division Administrative Order NSP-1621(L), dated January 30, 1991, Chevron USA, Inc. was authorized an 80-acre non-standard gas spacing and proration unit in the Blinebry Oil and Gas Pool comprising the E/2 NE/4 of Section 28, Township 21 South, Range 37 East, NMPM, Lea County, New Mexico, in which was dedicated the Eunice King Well No. 13 located at an unorthodox gas well location 554 feet from the North and East lines (Unit A) of said Section 28.

Reference is now made to your application dated January 7, 1993 to reduce said 80-acre unit by deleting the SE/4 NE/4 (Unit H) of said Section 28, which is to be utilized as a 40-acre oil spacing and proration unit for the Blinebry Oil and Gas Pool for Chevron's recently recompleted Eunice King Well No. 8 located 1980 feet from the North line and 660 feet from the East line of said Section 28.

By the authority granted me under the provisions of Rule 2(a)4 of the Special Rules and Regulations for the Blinebry Oil and Gas Pool, as promulgated by Division Order No. R-8170, as amended, a 40-acre non-standard gas spacing and proration unit in said pool comprising the NE/4 NE/4 of said Section 28 is hereby approved. Said unit to be dedicated to the above-described Eunice King Well No. 13, which is now considered to be at a standard gas well location for this size of gas spacing unit (Rule 2(b)2).

Division Administrative Order NSP-1621(L) is hereby placed in abeyance until further notice.

Sincerely,

William J. LeMay  
Director

WJL/MES/amg

cc: Oil Conservation Division - Hobbs  
File: NSP-1621(L)



STATE OF NEW MEXICO  
ENERGY, MINERALS AND NATURAL RESOURCES DEPARTMENT  
OIL CONSERVATION DIVISION

BRUCE KING  
GOVERNOR

January 30, 1991

POST OFFICE BOX 2088  
STATE LAND OFFICE BUILDING  
SANTA FE, NEW MEXICO 87504  
(505) 827-5800

Chevron USA, Inc.  
P.O. Box 1150  
Midland, TX 79702

Attention: A. W. Bohling

*Administrative Order NSP-1621(NSL)*

Dear Mr. Bohling:

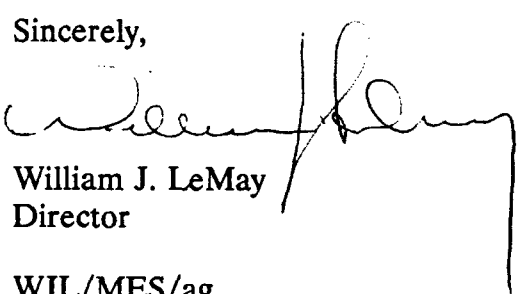
Reference is made to your application dated January 8, 1991 for an 80-acre non-standard gas proration unit consisting of the following acreage in the Blinebry Oil and Gas Pool:

LEA COUNTY, NEW MEXICO  
TOWNSHIP 21 SOUTH, RANGE 37 EAST, NMPM  
Section 28: E/2 NE/4

It is my understanding that this unit is to be dedicated to your existing Eunice King Well No. 13 located at an unorthodox gas well location 554 feet from the North and East lines (Unit A) of said Section 28.

By authority granted me under the provisions of Rules 2(a)4, 2(c) and 4(b) of the Special Rules and Regulations for the Blinebry Oil and Gas Pool, as promulgated by Division Order No. R-8170, as amended, the above non-standard gas proration unit and unorthodox gas well location is hereby approved.

Sincerely,

  
William J. LeMay  
Director

WJL/MES/ag

cc: Oil Conservation Division - Hobbs