

3R-451

**Release
Assessment Report**

**Date:
9/26/2012**

District Copy
For Scanning Only
Has NOT been processed.



Animas Environmental Services, LLC

www.animasenvironmental.com

September 26, 2012

Aaron Dailey
Enterprise Products Company
614 Reilly Avenue
Farmington, New Mexico 87401

624 E. Comanche
Farmington, NM 87401
505-564-2281

Durango, Colorado
970-403-3274

**RE: Release Report
Lateral K-7 September 2012 Release
Rio Arriba County, New Mexico**

RCVD OCT 9 '12
OIL CONS. DIV.
DIST. 3

Dear Mr. Dailey:

On September 4, 2012, Animas Environmental Services, LLC (AES) completed an assessment associated with a release of natural gas condensate from the Enterprise Products Company (Enterprise) Lateral K-7 pipeline. Figures 1 and 2 are topographic and aerial site maps, respectively, illustrating the release location, which is further described as follows:

Location - NE¼ NW¼, Section 27, T26N, R7W, Rio Arriba County, New Mexico
Latitude/Longitude - N36.46422 and W107.56505, respectively
Surface Owner – Bureau of Land Management (BLM)

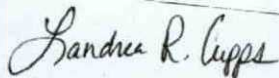
Ross Kennemer of AES collected five discrete soil samples (S-1 through S-5) from the walls and center of the excavated area for field screening of volatile organic compounds (VOCs). Additionally, a total of eight discrete samples were collected for field screening of VOCs from a total of four test holes (TH-1 through TH-4) installed outside of the excavated area. All samples were field screened for VOC vapors with a photo-ionization detector (PID) organic vapor meter (OVM).

Soil field screening results showed that VOC concentrations exceeded the New Mexico Oil Conservation Division (NMOCD) action level of 100 ppm in each sample. VOC concentrations ranged from 103 ppm in TH-3 at 7.5 feet below ground surface (bgs) up to 8,304 ppm in S-4 (the western wall of the excavation). Soil sample locations and tabulated results are included on Figure 3.

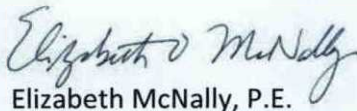
Based on field screening values for VOCs, AES recommends conducting a site assessment utilizing a Geoprobe to determine the vertical and horizontal extents of the release.

If you have any questions about this report or site conditions, please do not hesitate to contact Tami Ross or Ross Kennemer at (505) 564-2281.

Sincerely,



Landrea Cupps
Environmental Scientist

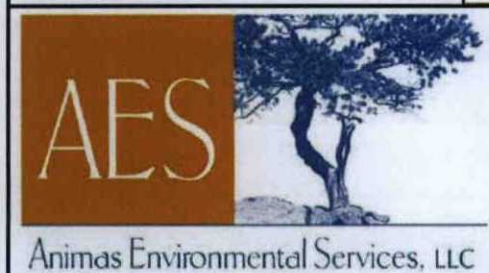
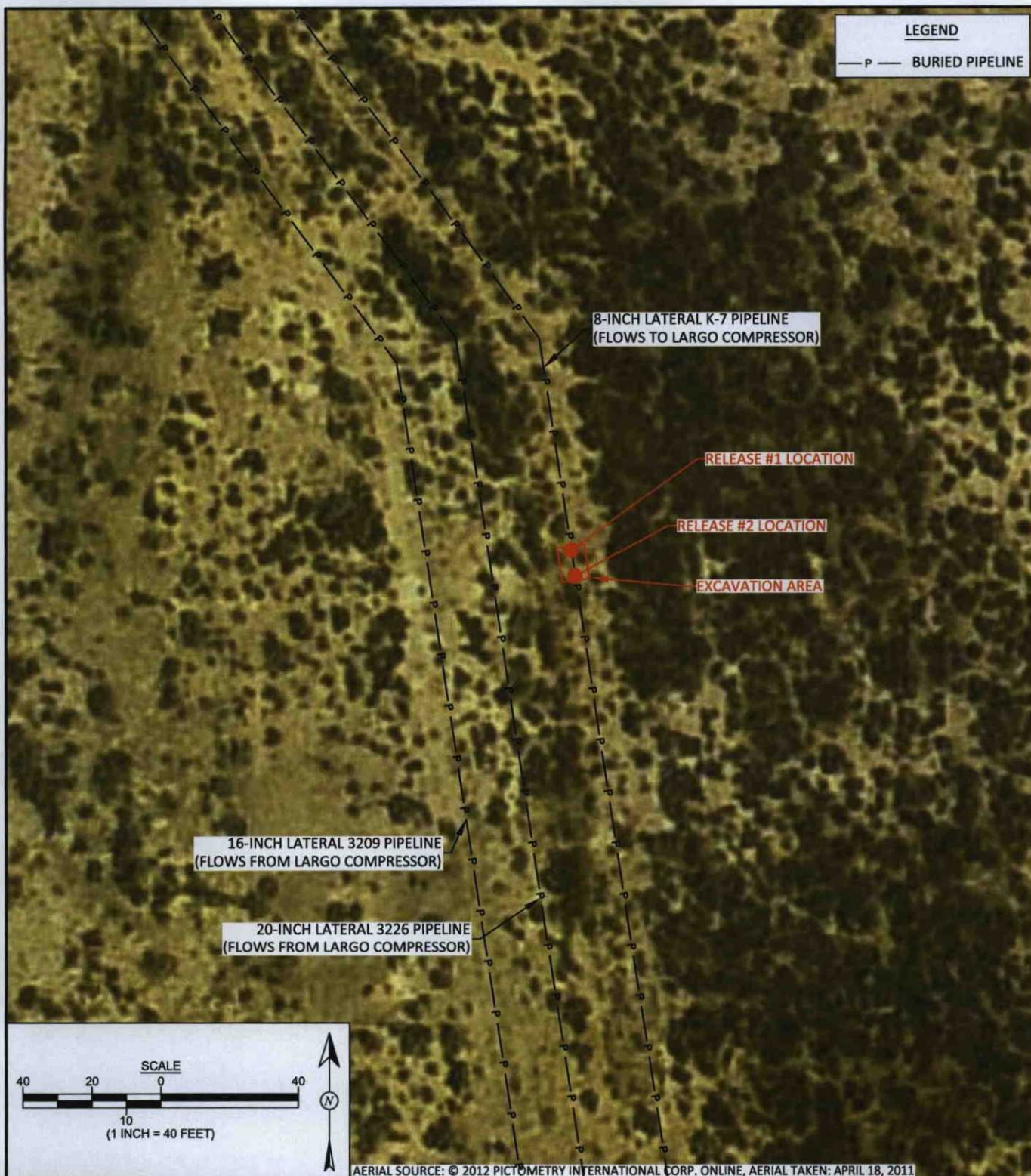


Elizabeth McNally, P.E.

Attachments:

- Figure 1. Topographic Site Location Map
- Figure 2. Aerial Site Map
- Figure 3. Sample Locations and Results, September 2012

R:\Animas 2000\2012 Projects\Enterprise\Lateral K-7\September 2012 Release\Lateral K-7 Release
Report 092612.docx



DRAWN BY: C. Lameman	DATE DRAWN: September 11, 2012
REVISIONS BY: C. Lameman	DATE REVISED: September 11, 2012
CHECKED BY: T. Ross	DATE CHECKED: September 11, 2012
APPROVED BY: E. McNally	DATE APPROVED: September 11, 2012

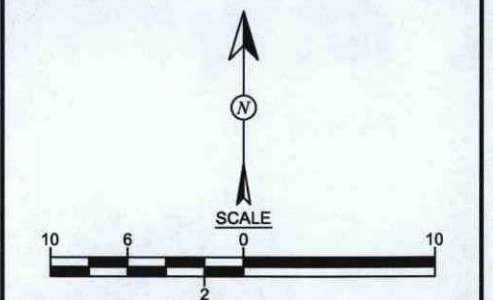
FIGURE 2
AERIAL SITE MAP ENTERPRISE PRODUCTS COMPANY LATERAL K-7 SEPTEMBER 2012 PIPELINE RELEASE RIO ARriba COUNTY, NEW MEXICO NE¼ NW¼, SECTION 27, T26N, R7W N36.46422, W107.56505

FIGURE 3
SAMPLE LOCATIONS AND RESULTS
SEPTEMBER 2012
 ENTERPRISE PRODUCTS COMPANY
 LATERAL K-7 SEPTEMBER 2012
 PIPELINE RELEASE
 RIO ARriba COUNTY, NEW MEXICO
 NE¼ NW¼, SECTION 27, T26N, R7W
 N36.46422, W107.56505



DRAWN BY: C. Lameman	DATE DRAWN: September 11, 2012
REVISIONS BY: C. Lameman	DATE REVISED: September 11, 2012
CHECKED BY: T. Ross	DATE CHECKED: September 11, 2012
APPROVED BY: E. McNally	DATE APPROVED: September 11, 2012

LEGEND	
●	SAMPLE LOCATIONS
— P —	BURIED PIPELINE



Field Screening Results			
Sample ID	Date	Depth (ft)	OVM-PID (ppm)
NMOCD ACTION LEVEL			100
S-1	9/4/12	4.5	4,776
S-2	9/4/12	4.5	1,517
S-3	9/4/12	2.25	1,882
S-4	9/4/12	2.25	8,304
S-5	9/4/12	4.5	5,004
TH-1	9/4/12	4.5	3,193
		8	4,607
TH-2	9/4/12	5	193
		8	5,908
TH-3	9/4/12	4.5	407
		7.5	103
TH-4	9/4/12	5	576
		7.5	201

