

PKJ/600745580
4090

**Stephens & Johnson Operating Company
South of 82
Section 1, Township 15 South, Range 37 East
Lea County, New Mexico**

Work Plan

July 28, 2009



Prepared for:

**Stephens & Johnson Operating Company
811 Sixth Street, Suite 300
Wichita Falls, Texas 76301-2509**

By:

***Safety & Environmental Solutions, Inc.
703 East Clinton
Hobbs, New Mexico 88240
(575) 397-0510***

I. Background

Safety & Environmental Solutions, Inc. (SESI) was engaged by Stephens & Johnson Operating Company to perform a site assessment located in Section 1, Township 15 South, and Range 37 East in Lea County, New Mexico. The subject area was impacted by the spillage of an undetermined amount of produced water from an injection line associated with production in the area. The remediation for this site was initiated in September 2003, however this site has been dormant for several years.

II. Surface and Ground Water

The nearest groundwater of record with the New Mexico State Engineer's Office is in Section 2 of 15 South, 37 East. According to measurements taken February 18, 1966, the depth to water in this well is 42.09 feet.

III. Soils

The soils in the area are predominantly sand and sandy loam.

IV. Work Performed

On May 12, 2009 Safety & Environmental Solutions, Inc was onsite to retrieve samples. Samples were retrieved 0 to 6 inches in depth throughout the bottom and sides of the excavation. All samples were transported under Chain of Custody to Ana-Lab of Kilgore, Texas for analysis. The samples were analyzed for Chlorides (EPA Method 300.00). The results of the analysis are as follows:

DATE	ID	Cl ⁻ (mg/kg)
5/12/09	#1	20.1
5/12/09	#2	45.2
5/12/09	#3	42.9
5/12/09	WW	1880
5/12/09	NW #1	151
5/12/09	NW #2	15600
5/12/09	NW #3	1550
5/12/09	EW	750
5/12/09	SW #1	108
5/12/09	SW #2	44.8
5/12/09	SW #3	867
5/12/09	MW #1	1430
5/12/09	MW #2	128
5/12/09	Surface 1	5770
5/12/09	Surface 2	7180
5/12/09	Surface 3	5960
5/12/09	Surface 4	7930

V. Action Plan

Closure

It is recommended that the existing excavation at this site be excavated horizontally until the chloride concentrations are no greater than 250 ppm and backfilled with clean soil.

The pooling area to the south will be excavated to approximately three (3) feet in depth. All excavated soil will be taken to a New Mexico Oil Conservation Division (NMOCD) approved disposal facility. The bottom and sides of the excavation will be sampled at the final excavation depths. The samples collected will be preserved on ice and delivered along with Chain of Custody to Cardinal Laboratories, of Hobbs, New Mexico, for testing. Laboratory samples will be analyzed for Chlorides (EPA method 300.00). The analytical results will document the level of Chlorides left in place.

After the excavation is complete, a 40 mil plastic liner will be installed in the bottom of the excavation to prevent surface waters or future spills from coming into contact with the chloride left in place under the liner. Clean soil will be used to backfill the excavation and the site returned to natural grade. The location will be reseeded to the landowner's requirements.

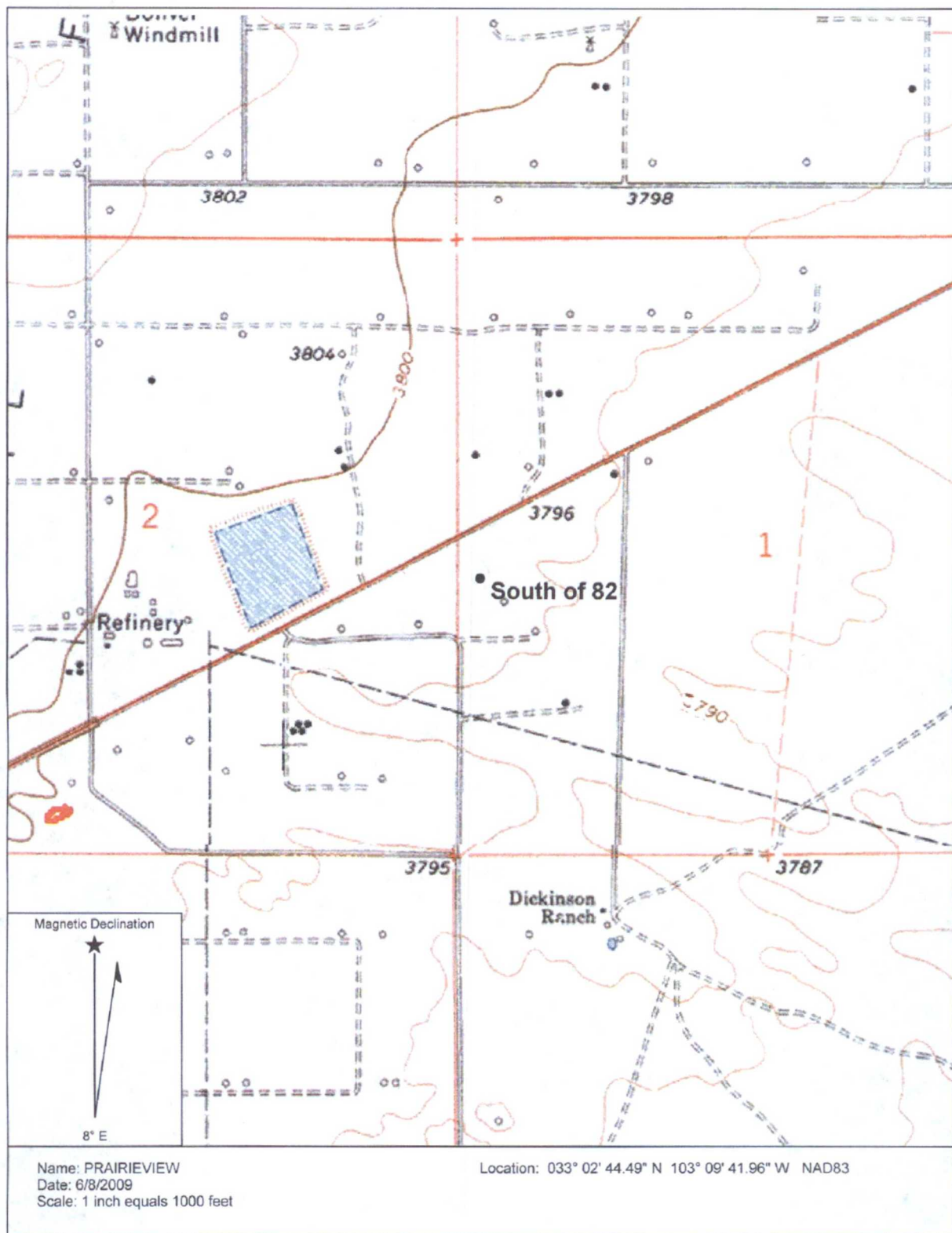
After completion of the delineation, a report of the findings and an appropriate work plan will be filed with the New Mexico Oil Conservation Division (NMOCD).

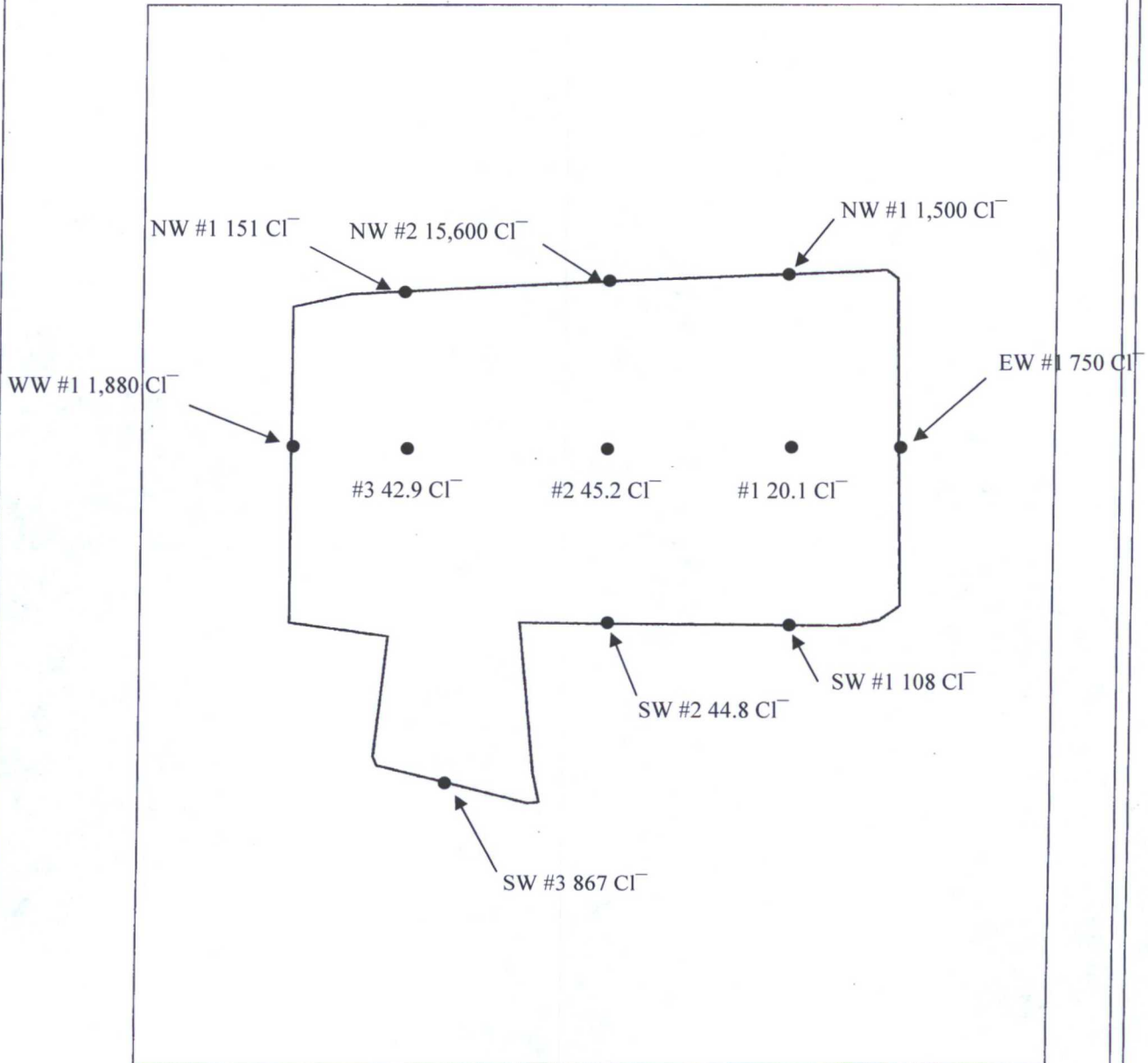
VI. Figures & Appendices

Figure 1 - Vicinity Map

Figure 2 - Site Plan

Appendix A – Analytical Results





South of 82

Lat/Long
WGS 1984



Scale 1:200
0 0.004
Miles

STE-03-002.SSF
6/10/2009

GPS Pathfinder® Office





Ana-Lab Corp. P.O. Box 9000 Kilgore, TX 75663

Phone 903/984-0551 FAX 903/984-5914 e-Mail corp@ana-lab.com

LELAP-accredited #02008

Printed 05/22/2009 Page 1 of 1

Analytical Results

Report Table of Contents

Report To

Brian Cuellar
Safety & Environmental Solutio
703 E. Clinton
Hobbs, NM 88240

Account

SESF

Project

442484

Stevens & Johnson S of 82

This report consists of this Table of Contents and the following pages:

<u>Report Name</u>	<u>Description</u>	<u>Pages</u>
442484_r03_03_ProjectResults	Ana-Lab Project P:442484 C:SESF Project Results	7
442484_r10_05_PROJQCG	Ana-Lab Project P:442484 C:SESF Project Quality Control Groups	3
442484_r99_09_CoC_SESF_1_of_1	Ana-Lab CoC SESF 442484_1_of_1	3
Total Pages:		13

Corporate Shipping: 2600 Dudley Rd. Kilgore, TX 75662



17025 # 0637-01

Client v1.0.1.252



NELAP-accredited #T104704201-08-TX



2008 Seal of Excellence

Form rptTOC Created 10/06/2004 v1.1



Ana-Lab Corp. P.O. Box 9000 Kilgore, TX 75663

Phone 903/984-0551 FAX 903/984-5914 e-Mail corp@ana-lab.com

LELAP-accredited #02008

Results

Printed:

05/22/2009

Page 1 of 7

Report To

Brian Cuellar
Safety & Environmental Solutio
703 E. Clinton
Hobbs, NM 88240

Account

SESF-P

Project

442484

Stevens & Johnson S of 82

Results

Accredited	Parameter	Results	Units	RL	Flags	CAS	Bottle
101325	#1	Received: 05/14/2009					
Soil		Collected by: I Kincaid	Affiliation:	Safety & Environment	05/12/2009	13:02	
SW-846 9056		Analyzed: GDG	05/15/2009	2338	QCgroup	318119	
AN	Chloride (water extractable)	20.1	mg/kg	9.00		02	
101326	#2	Received: 05/14/2009					
Soil		Collected by: I Kincaid	Affiliation:	Safety & Environment	05/12/2009	13:04	
SW-846 9056		Analyzed: GDG	05/15/2009	2355	QCgroup	318119	
AN	Chloride (water extractable)	45.2	mg/kg	12.0		02	
101327	#3	Received: 05/14/2009					
Soil		Collected by: I Kincaid	Affiliation:	Safety & Environment	05/12/2009	13:06	
SW-846 9056		Analyzed: GDG	05/16/2009	1213	QCgroup	318119	
AN	Chloride (water extractable)	42.9	mg/kg	15.0		02	
101328	WW	Received: 05/14/2009					
Soil		Collected by: I Kincaid	Affiliation:	Safety & Environment	05/12/2009	13:08	
SW-846 9056		Analyzed: GDG	05/16/2009	1230	QCgroup	318119	
AN	Chloride (water extractable)	1880	mg/kg	150		02	
101329	NW#1	Received: 05/14/2009					
Soil		Collected by: I Kincaid	Affiliation:	Safety & Environment	05/12/2009	13:10	
SW-846 9056		Analyzed: LCY	05/16/2009	1257	QCgroup	318122	
AN	Chloride (water extractable)	151	mg/kg	15.0		02	
101330	NW#2	Received: 05/14/2009					
Soil		Collected by: I Kincaid	Affiliation:	Safety & Environment	05/12/2009	13:12	
SW-846 9056		Analyzed: LCY	05/16/2009	1315	QCgroup	318122	
AN	Chloride (water extractable)	15600	mg/kg	3000		02	

Corporate Shipping: 2600 Dudley Rd. Kilgore, TX 75662

Panhandle Region: 4515 S. Georgia Suite 129 Amarillo TX 79110



NELAP-accredited #T104704201-08-TX



2008 Seal of Excellence

O-17025 # 0637-01

SClient v1.0.1.252

www.ana-lab.com

Form rptPROJRES Created 10/13/2004 v1.2



Ana-Lab Corp. P.O. Box 9000 Kilgore, TX 75663

Phone 903/984-0551 FAX 903/984-5914 e-Mail corp@ana-lab.com

LELAP-accredited #02008

Results

Printed:

05/22/2009

Page 2 of 7

Report To

Brian Cuellar
Safety & Environmental Solutio
703 E. Clinton
Hobbs, NM 88240

Account
SESF-P

Project
442484

Stevens & Johnson S of 82

Results

Accredited	Parameter	Results	Units	RL	Flags	CAS	Bottle
101331	NW#3	Received: 05/14/2009					
Soil		Collected by: I Kincaid	Affiliation:	Safety & Environment	05/12/2009	13:14	
SW-846 9056		Analyzed: LCY	05/16/2009	1333	QCgroup	318122	
AN	Chloride (water extractable)	1550	mg/kg	300		02	
101332	EW	Received: 05/14/2009					
Soil		Collected by: I Kincaid	Affiliation:	Safety & Environment	05/12/2009	13:16	
SW-846 9056		Analyzed: LCY	05/16/2009	1350	QCgroup	318122	
AN	Chloride (water extractable)	750	mg/kg	150		02	
101333	SW#1	Received: 05/14/2009					
Soil		Collected by: I Kincaid	Affiliation:	Safety & Environment	05/12/2009	13:20	
SW-846 9056		Analyzed: LCY	05/16/2009	1408	QCgroup	318122	
AN	Chloride (water extractable)	108	mg/kg	60.0		02	
101334	SW#2	Received: 05/14/2009					
Soil		Collected by: I Kincaid	Affiliation:	Safety & Environment	05/12/2009	13:22	
SW-846 9056		Analyzed: LCY	05/18/2009	0935	QCgroup	318122	
AN	Chloride (water extractable)	44.8	mg/kg	3.00		02	
101335	SW#3	Received: 05/14/2009					
Soil		Collected by: I Kincaid	Affiliation:	Safety & Environment	05/12/2009	13:24	
SW-846 9056		Analyzed: LCY	05/16/2009	1443	QCgroup	318122	
AN	Chloride (water extractable)	867	mg/kg	300		02	
101336	MW#1	Received: 05/14/2009					
Liquid Aqueous		Collected by: I Kincaid	Affiliation:	Safety & Environment	05/12/2009	13:55	
SW-846 9056		Analyzed: GDG	05/15/2009	0932	QCgroup	318101	
Chloride		1430	mg/L	300		01	

Corporate Shipping: 2600 Dudley Rd. Kilgore, TX 75662

Panhandle Region: 4515 S. Georgia Suite 129 Amarillo TX 79110



17025 # 0637-01

NELAP-accredited #T104704201-08-TX

2008 Seal of Excellence

Client v1.0.1.252

www.ana-lab.com

Form rptPROJRES Created 10/13/2004 v1.2



Results

Printed:
05/22/2009 Page 3 of 7

Report To

Brian Cuellar
Safety & Environmental Solutio
703 E. Clinton
Hobbs, NM 88240

Account
SESF-P

Project
442484

Stevens & Johnson S of 82

Results

accredited	Parameter	Results	Units	RL	Flags	CAS	Bottle
101337	MW#2	Received: 05/14/2009					
	Liquid Aqueous	Collected by: I Kincaid	Affiliation: Safety & Environment		05/12/2009	14:10	
SW-846 9056		Analyzed: GDG	05/15/2009	0949	QCgroup	318101	
AN	Chloride	128	mg/L	15.0		01	
101338	Surface 1	Received: 05/14/2009					
	Soil	Collected by: I Kincaid	Affiliation: Safety & Environment		05/12/2009	14:12	
SW-846 9056		Analyzed: LCY	05/16/2009	1501	QCgroup	318122	
AN	Chloride (water extractable)	5770	mg/kg	300		02	
101339	Surface 2	Received: 05/14/2009					
	Soil	Collected by: I Kincaid	Affiliation: Safety & Environment		05/12/2009	14:14	
SW-846 9056		Analyzed: LCY	05/16/2009	1518	QCgroup	318122	
AN	Chloride (water extractable)	7180	mg/kg	750		02	
101340	Surface 3	Received: 05/14/2009					
	Soil	Collected by: I Kincaid	Affiliation: Safety & Environment		05/12/2009	14:16	
SW-846 9056		Analyzed: LCY	05/16/2009	1536	QCgroup	318122	
AN	Chloride (water extractable)	5960	mg/kg	300		02	
101341	Surface 4	Received: 05/14/2009					
	Soil	Collected by: I Kincaid	Affiliation: Safety & Environment		05/12/2009	14:18	
SW-846 9056		Analyzed: LCY	05/16/2009	1611	QCgroup	318122	
AN	Chloride (water extractable)	7930	mg/kg	600		02	

Sample Preparation

101325 #1 Received: 05/14/2009

Corporate Shipping: 2600 Dudley Rd. Kilgore, TX 75662

Panhandle Region: 4515 S. Georgia Suite 129 Amarillo TX 79110



NELAP-accredited #T104704201-08-TX



2008 Seal of Excellence

17025 # 0637-01

Client v1.0.1.252

www.ana-lab.com

Form rptPROJRES Created 10/13/2004 v1.2



Results

Printed:
05/22/2009 Page 4 of 7

Report To

Brian Cuellar
Safety & Environmental Solutio
703 E. Clinton
Hobbs, NM 88240

Account
SESF-P

Project
442484

Stevens & Johnson S of 82

Sample Preparation

101325 #1

Received: 05/14/2009

SW-846 9056

Analyzed: GDG 05/15/2009 1430 QCgroup 318001

AN Water Extract-Ion Chromatography 40/4 grams 01

101326 #2

Received: 05/14/2009

SW-846 9056

Analyzed: GDG 05/15/2009 1430 QCgroup 318001

AN Water Extract-Ion Chromatography 40/4 grams 01

101327 #3

Received: 05/14/2009

SW-846 9056

Analyzed: GDG 05/15/2009 1430 QCgroup 318001

AN Water Extract-Ion Chromatography 40/4 grams 01

101328 WW

Received: 05/14/2009

SW-846 9056

Analyzed: GDG 05/15/2009 1430 QCgroup 318001

AN Water Extract-Ion Chromatography 40/4 grams 01

101329 NW#1

Received: 05/14/2009

SW-846 9056

Analyzed: LCY 05/16/2009 0900 QCgroup 318046

AN Water Extract-Ion Chromatography 40/4 grams 01

101330 NW#2

Received: 05/14/2009

SW-846 9056

Analyzed: LCY 05/16/2009 0900 QCgroup 318046

Water Extract-Ion Chromatography 40/4 grams 01

Corporate Shipping: 2600 Dudley Rd. Kilgore, TX 75662

Panhandle Region: 4515 S. Georgia Suite 129 Amarillo TX 79110





Ana-Lab Corp. P.O. Box 9000 Kilgore, TX 75663

Phone 903/984-0551 FAX 903/984-5914 e-Mail corp@ana-lab.com

LELAP-accredited #02008

Results

Printed:

05/22/2009

Page 5 of 7

Report To

Brian Cuellar
Safety & Environmental Solutio
703 E. Clinton
Hobbs, NM 88240

Account
SESF-P

Project
442484

Stevens & Johnson S of 82

Sample Preparation

101331 NW#3

Received: 05/14/2009

SW-846 9056

Analyzed: LCY 05/16/2009 0900 QCgroup 318046

AN Water Extract-Ion Chromatography 40/4 grams 01

101332 EW

Received: 05/14/2009

SW-846 9056

Analyzed: LCY 05/16/2009 0900 QCgroup 318046

AN Water Extract-Ion Chromatography 40/4 grams 01

101333 SW#1

Received: 05/14/2009

SW-846 9056

Analyzed: LCY 05/16/2009 0900 QCgroup 318046

AN Water Extract-Ion Chromatography 40/4 grams 01

101334 SW#2

Received: 05/14/2009

SW-846 9056

Analyzed: LCY 05/16/2009 0900 QCgroup 318046

AN Water Extract-Ion Chromatography 40/4 grams 01

101335 SW#3

Received: 05/14/2009

SW-846 9056

Analyzed: LCY 05/16/2009 0900 QCgroup 318046

AN Water Extract-Ion Chromatography 40/4 grams 01

101338 Surface 1

Received: 05/14/2009

SW-846 9056

Analyzed: LCY 05/16/2009 0900 QCgroup 318046

Water Extract-Ion Chromatography 40/4 grams 01

Corporate Shipping: 2600 Dudley Rd. Kilgore, TX 75662

Panhandle Region: 4515 S. Georgia Suite 129 Amarillo TX 79110



10-17025 # 0637-01

NELAP-accredited #T104704201-08-TX

2008 Seal of Excellence

Client v1.0.1.252

www.ana-lab.com

Form rptPROJRES Created 10/13/2004 v1.2



Ana-Lab Corp. P.O. Box 9000 Kilgore, TX 75663

Phone 903/984-0551 FAX 903/984-5914 e-Mail corp@ana-lab.com

LELAP-accredited #02008

Results

Printed:

05/22/2009

Page 6 of 7

Report To

Brian Cuellar
Safety & Environmental Solutio
703 E. Clinton
Hobbs, NM 88240

Account

SESF-P

Project

442484

Stevens & Johnson S of 82

Sample Preparation

101339 Surface 2

Received: 05/14/2009

SW-846 9056

Analyzed: LCY 05/16/2009 0900 QCgroup 318046

AN Water Extract-Ion Chromatography 40/4 grams 01

101340 Surface 3

Received: 05/14/2009

SW-846 9056

Analyzed: LCY 05/16/2009 0900 QCgroup 318046

AN Water Extract-Ion Chromatography 40/4 grams 01

101341 Surface 4

Received: 05/14/2009

SW-846 9056

Analyzed: LCY 05/16/2009 0900 QCgroup 318046

AN Water Extract-Ion Chromatography 40/4 grams 01

Corporate Shipping: 2600 Dudley Rd. Kilgore, TX 75662

Panhandle Region: 4515 S. Georgia Suite 129 Amarillo TX 79110



ACCREDITED IN ACCORDANCE WITH
nelap
NELAP-accredited #T104704201-08-TX



2008 Seal of Excellence

D-17025 # 0637-01

Client v1.0.1.252

www.ana-lab.com

Form rptPROJRES Created 10/13/2004 v1.2



Ana-Lab Corp. P.O. Box 9000 Kilgore, TX 75663

Phone 903/984-0551 FAX 903/984-5914 e-Mail corp@ana-lab.com

LELAP-accredited #02008

Results

Printed:

05/22/2009

Page 7 of 7

Report To

Brian Cuellar
Safety & Environmental Solutio
703 E. Clinton
Hobbs, NM 88240

Account

SESF-P

Project

442484

Stevens & Johnson S of 82

Qualifiers:

We report results on an 'As Received' or wet basis unless marked 'Dry Weight'. Unless otherwise noted, testing was performed at Ana-lab's corporate laboratory that holds the following Federal and State certificates: Texas Department of Health Lead Firm Certificate 2110076, EPA National Lead Laboratory Accreditation Program #637.01, US Consumer Product Safety Commission #1095, US Department of Agriculture Soil Import Permit S-37592, Texas Commission on Environmental Quality Drinking Water Laboratory Certificate TX219, Texas Commission on Environmental Quality NELAP T104704201-06-TX, Oklahoma Department of Environmental Quality Drinking Water Certification Lab ID# D9913, EPA Lab Number TX00063, USEPA Approved Perchlorate Testing Lab, USEPA UCMR2 Approved Lab, Oklahoma Department of Environmental Quality Laboratory Certificate 8125, Arkansas Department of Environmental Quality Certification #03-070-0, Louisiana Department of Environmental Quality Laboratory Certification (NELAP, LELAP) #02008, Louisiana Department of Health and Hospitals Drinking Water (NELAP) # LA030020, US Department of Energy Approved, State of Kansas Department of Health and Environment Waste Water and Solid/Hazardous Waste Cert. E-10365, Alabama Department of Environmental Management Drinking Water #41540. Ana-Lab is also accredited to the international ISO-17025 standard by the American Association for Laboratory Accreditation (A2LA Certificate # 0637-01). The Accredited column designates accreditation by U -- UCMR2 (EPA), A -- A2LA, N -- NELAC, or z -- not covered under one of these scopes of accreditation.

These analytical results relate to the sample tested. This report may NOT be reproduced EXCEPT in FULL without written approval of Ana-Lab Corp. Unless otherwise specified, these test results meet the requirements of NELAC.

RL is the Reporting Limit (sample specific quantitation limit) and is at or above the Method Detection Limit (MDL). CAS is Chemical Abstract Service number.

C. H. Whiteside

C. H. Whiteside, Ph.D., President



Corporate Shipping: 2600 Dudley Rd. Kilgore, TX 75662

Panhandle Region: 4515 S. Georgia Suite 129 Amarillo TX 79110



ISO-17025 # 0637-01



NELAP-accredited #T104704201-08-TX



2008 Seal of Excellence



Quality Control

Printed 05/22/2009 Page 1 of 3

Report To

Brian Cuellar
Safety & Environmental Solutio
703 E. Clinton
Hobbs, NM 88240

Project

442484

318101 I Liquid Aqueous SW-846 9056

Blank

Parameter	PrepSet	Reading	MDL	MDL	Units	Out	File
Bromide	318101	ND	0.00222	0.0200	mg/L		0000840546
Chloride	318101	ND	0.00767	0.300	mg/L		0000840546
Iodide	318101	ND	0.00213	0.100	mg/L		0000840546
Nitrate-Nitrite Nitrogen	318101	ND	0.000732	0.0200	mg/L		0000840546
Nitrate-Nitrogen Total	318101	ND	0.000593	0.0100	mg/L		0000840546
Nitrite-Nitrogen, Total	318101	ND	0.000262	0.0100	mg/L		0000840546
Ortho-phosphate as P	318101	ND	0.00133	0.0100	mg/L		0000840546
Sulfate	318101	ND	0.159	0.300	mg/L		0000840546

CCV

Parameter	Reading	Known	Units	Recover%	Limits%	Out	File
Bromide	10.5	10.0	mg/L	105	90.0 - 110		0000840570
Bromide	10.6	10.0	mg/L	106	90.0 - 110		0000840543
Bromide	10.7	10.0	mg/L	107	90.0 - 110		0000840559
Chloride	10.1	10.0	mg/L	101	90.0 - 110		0000840570
Chloride	10.2	10.0	mg/L	102	90.0 - 110		0000840543
Chloride	10.3	10.0	mg/L	103	90.0 - 110		0000840559
Iodide	10.4	10.0	mg/L	104	90.0 - 110		0000840543
Iodide	10.4	10.0	mg/L	104	90.0 - 110		0000840570
Iodide	10.6	10.0	mg/L	106	90.0 - 110		0000840559
Nitrate-Nitrite Nitrogen	5.29	5.30	mg/L	99.8	90.0 - 110		0000840543
Nitrate-Nitrite Nitrogen	5.30	5.30	mg/L	100	90.0 - 110		0000840570
Nitrate-Nitrite Nitrogen	5.31	5.30	mg/L	100	90.0 - 110		0000840559
Nitrate-Nitrogen Total	2.24	2.26	mg/L	99.1	90.0 - 110		0000840543
Nitrate-Nitrogen Total	2.25	2.26	mg/L	99.6	90.0 - 110		0000840570
Nitrate-Nitrogen Total	2.26	2.26	mg/L	100	90.0 - 110		0000840559
Nitrite-Nitrogen, Total	3.05	3.04	mg/L	100	90.0 - 110		0000840543
Nitrite-Nitrogen, Total	3.05	3.04	mg/L	100	90.0 - 110		0000840559
Nitrite-Nitrogen, Total	3.05	3.04	mg/L	100	90.0 - 110		0000840570
Ortho-phosphate as P	3.50	3.26	mg/L	107	90.0 - 110		0000840543
Ortho-phosphate as P	3.52	3.26	mg/L	108	90.0 - 110		0000840570
Ortho-phosphate as P	3.54	3.26	mg/L	109	90.0 - 110		0000840559
Sulfate	10.3	10.0	mg/L	103	90.0 - 110		0000840570
Sulfate	10.4	10.0	mg/L	104	90.0 - 110		0000840543
Sulfate	10.5	10.0	mg/L	105	90.0 - 110		0000840559

Corporate Shipping: 2600 Dudley Rd. Kilgore, TX 75662

Panhandle Region: 4515 S. Georgia Suite 129 Amarillo TX 79110



D-17025 # 0637-01

NELAP-accredited #T104704201-08-TX

2008 Seal of Excellence

Client v1.0.1.252

www.ana-lab.com

Form rptPROJQCGrpt Created 01/27/2005 v1.0



Quality Control

Printed 05/22/2009 Page 2 of 3

Report No.

Brian Cuellar
Safety & Environmental Solutio
703 E. Clinton
Hobbs, NM 88240

Project

442484

318101 I Liquid Aqueous SW-846 9056

LCS

Parameter	PrepSet	Reading	Known	Units	Recover%	Limits	File	Out
Bromide	318101	1.08	1.00	mg/L	108	90.0 - 110	0000840544	
Chloride	318101	0.969	1.00	mg/L	96.9	90.0 - 110	0000840544	
Iodide	318101	0.997	1.00	mg/L	99.7	90.0 - 110	0000840544	
Nitrate-Nitrite Nitrogen	318101	0.517	0.530	mg/L	97.5	90.0 - 110	0000840544	
Nitrate-Nitrogen Total	318101	0.214	0.226	mg/L	94.7	90.0 - 110	0000840544	
Nitrite-Nitrogen, Total	318101	0.303	0.304	mg/L	99.7	90.0 - 110	0000840544	
Ortho-phosphate as P	318101	0.303	0.326	mg/L	92.9	90.0 - 110	0000840544	
Sulfate	318101	0.943	1.00	mg/L	94.3	90.0 - 110	0000840544	

LCS Dup

Parameter	PrepSet	LCS	LCSD	Known	Limits%	LCS%	LCSD%	Units	RPD	Limit%
Bromide	318101	1.08	1.07	1.00	90.0 - 110	108	107	mg/L	0.930	20.0
Chloride	318101	0.969	0.968	1.00	90.0 - 110	96.9	96.8	mg/L	0.103	20.0
Iodide	318101	0.997	1.03	1.00	90.0 - 110	99.7	103	mg/L	3.26	20.0
Nitrate-Nitrite Nitrogen	318101	0.517	0.517	0.530	90.0 - 110	97.5	97.5	mg/L	0	20.0
Nitrate-Nitrogen Total	318101	0.214	0.217	0.226	90.0 - 110	94.7	96.0	mg/L	1.36	20.0
Nitrite-Nitrogen, Total	318101	0.303	0.300	0.304	90.0 - 110	99.7	98.7	mg/L	1.01	20.0
Ortho-phosphate as P	318101	0.303	0.317	0.326	90.0 - 110	92.9	97.2	mg/L	4.52	20.0
Sulfate	318101	0.943	0.954	1.00	90.0 - 110	94.3	95.4	mg/L	1.16	20.0

MS

Parameter	Sample	MS	MSD	UNK	Known	Limits	MS%	MSD%	Units	RPD	Limit%
Bromide	100958	104	103	ND	100	90.0 - 110	104	103	mg/L	0.966	30.0
Chloride	100958	253	248	145	100	90.0 - 110	108	103	mg/L	4.74	30.0
Iodide	100958	102	98.7	ND	100	90.0 - 110	102	98.7	mg/L	3.29	30.0
Nitrate-Nitrite Nitrogen	100958	55.8	54.4	4.97	53.0	90.0 - 110	95.9	93.3	mg/L	2.75	30.0
Nitrate-Nitrogen Total	100958	24.9	24.7	3.86	22.6	90.0 - 110	93.1	92.2	mg/L	0.971	30.0
Nitrite-Nitrogen, Total	100958	30.9	29.7	1.11	30.4	90.0 - 110	98.0	94.0	mg/L	4.17	30.0
Ortho-phosphate as P	100958	42.9	42.8	10.7	32.6	90.0 - 110	98.8	98.5	mg/L	0.304	30.0
Sulfate	100958	177	174	78.2	100	90.0 - 110	98.8	95.8	mg/L	3.08	30.0

318119 I Soil SW-846 9056

Blank

Parameter	PrepSet	Reading	MDL	MDL	Units	Out	File
Chloride (water extractable)	318001	ND	0.0534	0.300	mg/kg		0000840797

CCV

Parameter	Reading	Known	Units	Recover%	Limits%	Out	File
-----------	---------	-------	-------	----------	---------	-----	------

Corporate Shipping: 2600 Dudley Rd. Kilgore, TX 75662

Panhandle Region: 4515 S. Georgia Suite 129 Amarillo TX 79110



0-17025 # 0637-01

NELAP-accredited #T104704201-08-TX

2008 Seal of Excellence

Client v1.0.1.252

www.ana-lab.com

Form rpt PROJQCGrpt Created 01/27/2005 v1.0



Ana-Lab Corp. P.O. Box 9000 Kilgore, TX 75663

Phone 903/984-0551 FAX 903/984-5914 e-Mail corp@ana-lab.com

LELAP-accredited #02008

Quality Control

Printed 05/22/2009 Page 3 of 3

Report To:

Brian Cuellar
Safety & Environmental Solutio
703 E. Clinton
Hobbs, NM 88240

Project

442484

8119 I Soil SW-846 9056

CCV

Parameter	Reading	Known	Units	Recover%	Limits%	Out	File
Chloride (water extractable)	10.1	10.0	mg/kg	101	90.0 - 110		0000840799
Chloride (water extractable)	10.2	10.0	mg/kg	102	90.0 - 110		0000840796
Chloride (water extractable)	10.2	10.0	mg/kg	102	90.0 - 110		0000840798
Chloride (water extractable)	10.2	10.0	mg/kg	102	90.0 - 110		0000840812
Chloride (water extractable)	10.2	10.0	mg/kg	102	90.0 - 110		0000840822
Chloride (water extractable)	10.2	10.0	mg/kg	102	90.0 - 110		0000840825
Chloride (water extractable)	10.3	10.0	mg/kg	103	90.0 - 110		0000840823

LCS

Parameter	PrepSet	Reading	Known	Units	Recover%	Limits	File	Out
Chloride (water extractable)	318001	0.948	1.00	mg/kg	94.8	90.0 - 110	0000840800	

LCS Dup

Parameter	PrepSet	LCS	LCSD	Known	Limits%	LCS%	LCSD%	Units	RPD	Limit%
Chloride (water extractable)	318001	0.948	1.09	1.00	90.0 - 110	94.8	109	mg/kg	13.9	20.0

8122 I Soil SW-846 9056

Blank

Parameter	PrepSet	Reading	MDL	MDL	Units	Out	File
Chloride (water extractable)	318046	ND	0.0534	0.300	mg/kg		0000840894

CCV

Parameter	Reading	Known	Units	Recover%	Limits%	Out	File
Chloride (water extractable)	10.1	10.0	mg/kg	101	90.0 - 110		0000840893
Chloride (water extractable)	10.1	10.0	mg/kg	101	90.0 - 110		0000840906
Chloride (water extractable)	10.1	10.0	mg/kg	101	90.0 - 110		0000840916
Chloride (water extractable)	10.3	10.0	mg/kg	103	90.0 - 110		0000840917
Chloride (water extractable)	10.3	10.0	mg/kg	103	90.0 - 110		0000840920

LCS

Parameter	PrepSet	Reading	Known	Units	Recover%	Limits	File	Out
Chloride (water extractable)	318046	0.982	1.00	mg/kg	98.2	90.0 - 110	0000840895	

LCS Dup

Parameter	PrepSet	LCS	LCSD	Known	Limits%	LCS%	LCSD%	Units	RPD	Limit%
Chloride (water extractable)	318046	0.982	0.962	1.00	90.0 - 110	98.2	96.2	mg/kg	2.06	20.0

RPD is Relative Percent Difference: $\text{abs}(r1-r2) / \text{mean}(r1,r2) * 100\%$

Recover% is Recovery Percent: $\text{result} / \text{known} * 100\%$

Corporate Shipping: 2600 Dudley Rd. Kilgore, TX 75662

Panhandle Region: 4515 S. Georgia Suite 129 Amarillo TX 79110



17025 # 0637-01

NELAP-accredited #T104704201-08-TX

2008 Seal of Excellence

Client v1.0.1.252

www.ana-lab.com

Form rptPROJQCGrpt Created 01/27/2005 v1.0



Panhandle Oklahoma North-TX Central-TX
 806.355.3556 405.292.6630 817.261.6404 512.821.0045
 Rio Grand Valley Ark-La-Miss Gulf Coast Alabama
 956.831.6437 318.219.9300 281.333.9414 256.830.0788

2600 Dudley Rd
 PO Box 9000
 Kilgore, TX 75662
 903.984.0551
 (fx) 903.984.5914
 e-mail: corp@ana-lab.com



Report to:

Company Name: SESE		Project - Name / Location: Stevens & Johnson S. at 82		Analysis Requested	
Address: 203 E Clinton		Billing (if different)			
City: Halles	State: NM	City: SESE	State: SESE		
Phone: 505-392-0550	Fax: 505-392-0550	Phone: 505-392-0550	Fax: 505-392-0550		
Sampler Signature: <i>[Signature]</i>		Printed Name: Isaac Kinard		PG Number: STE-03-002	
Lab Number	Field Identification	Date	Time	Matrix	Containers
10320	#1	5/12/19	1302	Soil	1
10321	#2	1304			
10322	#3	1306			
10323	WW	1308			
10324	NW #1	1310			
10325	NW #2	1312			
10326	NW #3	1314			
10327	EW	1316			
10328	SW #1	1320			
10329	SW #2	1322			
Relinquished by: Isaac Kinard		Signature: <i>[Signature]</i>		Affiliation: SESE	
Date: 5/13/19 1500		Is Hazardous for: <input type="checkbox"/> HF <input type="checkbox"/> CN <input type="checkbox"/> S = <input type="checkbox"/>		Received by: Christi Parker	
Printed Name: Isaac Kinard		Signature: <i>[Signature]</i>		Affiliation: SESE	
Date: 5/14/19 0940		Signature: <i>[Signature]</i>		Affiliation: ANA-Lab	
Relinquished by: Isaac Kinard		Signature: <i>[Signature]</i>		Affiliation: SESE	
Date: 5/14/19 0940		Is Hazardous for: <input type="checkbox"/> HF <input type="checkbox"/> CN <input type="checkbox"/> S = <input type="checkbox"/>		Received by: Christi Parker	
Printed Name: Isaac Kinard		Signature: <i>[Signature]</i>		Affiliation: SESE	
Date: 5/14/19 0940		Is Hazardous for: <input type="checkbox"/> HF <input type="checkbox"/> CN <input type="checkbox"/> S = <input type="checkbox"/>		Received by: Christi Parker	
Printed Name: Isaac Kinard		Signature: <i>[Signature]</i>		Affiliation: SESE	

Samples Received on Ice? ☐ Yes ☒ No
 Cooler/Sample Secure? ☒ Yes ☐ No
 Requested TAT: **4 day**
 Method of Shipment: ☐ Bus ☒ FedEx
 Tracking or Shipping Number: **9709210782**
 Hand delivered ☐ DHL ☐ other ☐ UPS ☐ Lone Star ☐

003689
 003233
 003532
 003688

250



Panhandle Oklahoma North-TX Central-TX
806.355.3556 405.292.6630 817.261.6404 512.821.0045
Rio Grand Valley Ark-La-Miss Gulf Coast Alabama
956.831.6437 318.219.9300 281.333.9414 256.830.0788

2600 Dudley Rd
PO Box 9000
Kilgore, TX 75662
903.984.0551
(fx) 903.984.5914
e-mail: corp@ana-lab.com



Report to:

Company name: SESEAddress: 703 E ClintonCity: HebbysState: TXPhone: 882240Fax: 882240E-mail: SESESampler Signature: [Signature]Lab Number: 5139Do Not Use: 5139Field Identification: SW #3Date: 5/12/94Time: 1324Matrix: SoilContainers: 1Comments: Comp/GrabAffiliation: SESEPO Number: 51E-03-002Printed Name: Isaac KinardSignature: [Signature]Affiliation: SESEIs Hazardous for: ☐ HF ☐ CN ☐ S ☐Relinquished by: Isaac KinardPrinted Name: Isaac KinardSignature: [Signature]Affiliation: SESEDate: 5/13/94Time: 1500Signature: [Signature]Printed Name: Isaac KinardSignature: [Signature]Affiliation: SESEIs Hazardous for: ☐ HF ☐ CN ☐ S ☐Relinquished by: Isaac KinardPrinted Name: Isaac KinardSignature: [Signature]Affiliation: SESEDate: 5/14/94Time: 1500Signature: [Signature]Printed Name: Isaac KinardSignature: [Signature]Affiliation: SESEIs Hazardous for: ☐ HF ☐ CN ☐ S ☐Relinquished by: Isaac KinardPrinted Name: Isaac KinardSignature: [Signature]Affiliation: SESESamples Received on Ice? ☐ Yes ☒ NoCooler/Sample Secure? ☐ Yes ☒ NoRequested TAT: 4 dayMethod of Shipment: ☐ Bus ☒ FedExTracking or Shipping Number: 7039210482Lone Star: ☐ UPS ☐ Hand deliveredDHL: ☐ other: ☐#comments: 003689#comments: 003233#comments: 003532#comments: 003688Project- Name / Location: SESEBilling (if different): Stevens & Johnson S482City: HebbysState: TXZip: 75662Phone: 882240Fax: 882240E-mail: SESESampler Signature: [Signature]Lab Number: 5139Do Not Use: 5139Field Identification: SW #3Date: 5/12/94Time: 1324Matrix: SoilContainers: 1Comments: Comp/GrabAffiliation: SESEPO Number: 51E-03-002Printed Name: Isaac KinardSignature: [Signature]Affiliation: SESEIs Hazardous for: ☐ HF ☐ CN ☐ S ☐Relinquished by: Isaac KinardPrinted Name: Isaac KinardSignature: [Signature]Affiliation: SESEDate: 5/13/94Time: 1500Signature: [Signature]Printed Name: Isaac KinardSignature: [Signature]Affiliation: SESEIs Hazardous for: ☐ HF ☐ CN ☐ S ☐Relinquished by: Isaac KinardPrinted Name: Isaac KinardSignature: [Signature]Affiliation: SESEDate: 5/14/94Time: 1500Signature: [Signature]Printed Name: Isaac KinardSignature: [Signature]Affiliation: SESEIs Hazardous for: ☐ HF ☐ CN ☐ S ☐Relinquished by: Isaac KinardPrinted Name: Isaac KinardSignature: [Signature]Affiliation: SESEDate: 5/14/94Time: 1500

Analysis Requested

Analysis Requested

Analysis Requested

Analysis Requested

Analysis Requested

Analysis Requested

Analysis Requested

Analysis Requested

Analysis Requested

Analysis Requested

Analysis Requested

Analysis Requested

Analysis Requested

Analysis Requested

Analysis Requested

Analysis Requested

Analysis Requested

Analysis Requested

Analysis Requested

Analysis Requested

Analysis Requested

Analysis Requested

Analysis Requested

Analysis Requested

Analysis Requested

Analysis Requested

Analysis Requested

Analysis Requested

Analysis Requested

Analysis Requested

Analysis Requested

Analysis Requested

Analysis Requested

Analysis Requested

Analysis Requested

Analysis Requested

Analysis Requested

Analysis Requested

Analysis Requested

Analysis Requested

Analysis Requested

Analysis Requested

Analysis Requested

Analysis Requested

Analysis Requested

Analysis Requested

Analysis Requested

Analysis Requested

Analysis Requested

Analysis Requested

Analysis Requested