

ABOVE THIS LINE FOR DIVISION USE ONLY

NEW MEXICO OIL CONSERVATION DIVISION  
 - Engineering Bureau -  
 1220 South St. Francis Drive, Santa Fe, NM 87505



**ADMINISTRATIVE APPLICATION CHECKLIST**

THIS CHECKLIST IS MANDATORY FOR ALL ADMINISTRATIVE APPLICATIONS FOR EXCEPTIONS TO DIVISION RULES AND REGULATIONS WHICH REQUIRE PROCESSING AT THE DIVISION LEVEL IN SANTA FE

**Application Acronyms:**

- [NSL-Non-Standard Location] [NSP-Non-Standard Proration Unit] [SD-Simultaneous Dedication]
- [DHC-Downhole Commingling] [CTB-Lease Commingling] [PLC-Pool/Lease Commingling]
- [PC-Pool Commingling] [OLS - Off-Lease Storage] [OLM-Off-Lease Measurement]
- [WFX-Waterflood Expansion] [PMX-Pressure Maintenance Expansion]
- [SWD-Salt Water Disposal] [IPI-Injection Pressure Increase]
- [EOR-Qualified Enhanced Oil Recovery Certification] [PPR-Positive Production Response]

- [1] TYPE OF APPLICATION - Check Those Which Apply for [A]
- [A]  Location - Spacing Unit - Simultaneous Dedication  
 NSL  NSP  SD
- Check One Only for [B] or [C]
- [B] Commingling - Storage - Measurement  
 DHC  CTB  PLC  PC  OLS  OLM
- [C] Injection - Disposal - Pressure Increase - Enhanced Oil Recovery  
 WFX  PMX  SWD  IPI  EOR  PPR
- [D] Other: Specify \_\_\_\_\_
- [2] NOTIFICATION REQUIRED TO: - Check Those Which Apply, or  Does Not Apply
- [A]  Working, Royalty, or Overriding Royalty Interest Owners
- [B]  Offset Operators, Leaseholders or Surface Owner
- [C]  Application is One Which Requires Published Legal Notice
- [D]  Notification and/or Concurrent Approval by BLM or SLO  
U.S. Bureau of Land Management - Commissioner of Public Lands, State Land Office
- [E]  For all of the above, Proof of Notification or Publication is Attached, and/or,
- [F]  Waivers are Attached

*-NSL 7380  
 Kaiser Francis Oil  
 Company  
 12361  
 Well  
 -South BELL LAKE  
 Unit 63 BSS #14  
 30-025-Pending  
 Pool  
 -Antelope Ridge  
 Bone Springs  
 West  
 2209*

[3] SUBMIT ACCURATE AND COMPLETE INFORMATION REQUIRED TO PROCESS THE TYPE OF APPLICATION INDICATED ABOVE.

[4] CERTIFICATION: I hereby certify that the information submitted with this application for administrative approval is accurate and complete to the best of my knowledge. I also understand that no action will be taken on this application until the required information and notifications are submitted to the Division.

Note: Statement must be completed by an individual with managerial and/or supervisory capacity.

James Bruce  
 Print or Type Name

*James Bruce*  
 Signature

*Attorney for Applicant 1/2/16*  
 Title

*1/2/16*  
 Date

*james.bruce@aol.com*  
 e-mail Address

**JAMES BRUCE**  
ATTORNEY AT LAW

POST OFFICE BOX 1056  
SANTA FE, NEW MEXICO 87504

369 MONTEZUMA, NO. 213  
SANTA FE, NEW MEXICO 87501

(505) 982-2043 (Phone)  
(505) 660-6612 (Cell)  
(505) 982-2151 (Fax)

[jamesbruc@aol.com](mailto:jamesbruc@aol.com)

January 12, 2016

Michael McMillan  
Oil Conservation Division  
1220 South St. Francis Drive  
Santa Fe, New Mexico 87505

Dear Mr. McMillan:

Kaiser-Francis Oil Company applies for approval of an unorthodox oil well location for the following well:

<u>Well:</u>	South Bell Lake Unit 6 3BSS Well No. 1H
<u>Surface location:</u>	2215 feet FSL & 375 feet FEL §6-24S-34E
<u>First take point:</u>	2688 feet FSL & 400 feet FWL §5-24S-34E
<u>Last take point:</u>	330 feet FNL & 400 feet FWL §32-23S-34E
<u>Well unit (project area):</u>	W½W½ of Section 32-23S-34E, and Lot 4 (NW¼NW¼) and SW¼NW¼ of Section 5-24S-34E, Lea County, New Mexico, containing 239.80 acres

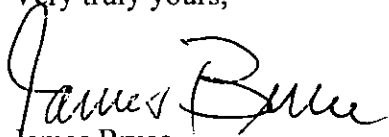
The well will be drilled to a depth sufficient to test the Bone Spring formation (West Antelope Ridge-Bone Spring Pool). The pool is spaced on statewide rules, with 40 acre spacing and wells to be located no closer than 330 feet to a quarter-quarter section line. A Form C-102 is attached as **Exhibit A**.

The unorthodox location is requested to maximize the productive length of the wellbore.

The well unit is wholly within the nine section South Bell Lake Unit. **Exhibit B**. All interest owners in the unit area are committed to the unit, so ownership is common in the well unit and all offsetting acreage. As a result, there is no adversely affected party, and notice has not been given to anyone.

Please contact me if you need any further information on this application.

Very truly yours,

A handwritten signature in cursive script that reads "James Bruce". The signature is written in black ink and is positioned above the printed name.

James Bruce

Attorney for Kaiser-Francis Oil Company

DISTRICT I  
1625 N. French Dr., Hobbs, NM 88240  
Phone: (575) 393-6161 Fax: (575) 393-0720

DISTRICT II  
811 S. First St., Artesia, NM 88210  
Phone: (575) 748-1283 Fax: (575) 748-9720

DISTRICT III  
1000 Rio Hrazos Road, Aztec, NM 87410  
Phone: (505) 374-6178 Fax: (505) 374-6170

DISTRICT IV  
1220 S. St. Francis Dr., Santa Fe, NM 87505  
Phone: (505) 476-3460 Fax: (505) 476-3462

State of New Mexico  
Energy, Minerals & Natural Resources Department  
**OIL CONSERVATION DIVISION**  
1220 South St. Francis Dr.  
Santa Fe, New Mexico 87505

Form C-102  
Revised August 1, 2011  
Submit one copy to appropriate  
District Office

□ AMENDED REPORT

**WELL LOCATION AND ACREAGE DEDICATION PLAT**

API Number	Pool Code	Pool Name
Property Code	Property Name <b>SOUTH BELL LAKE UNIT 6 3BSS</b>	Well Number <b>1H</b>
OGRID No.	Operator Name <b>KAISER-FRANCIS OIL COMPANY</b>	Elevation <b>3601'</b>

Surface Location

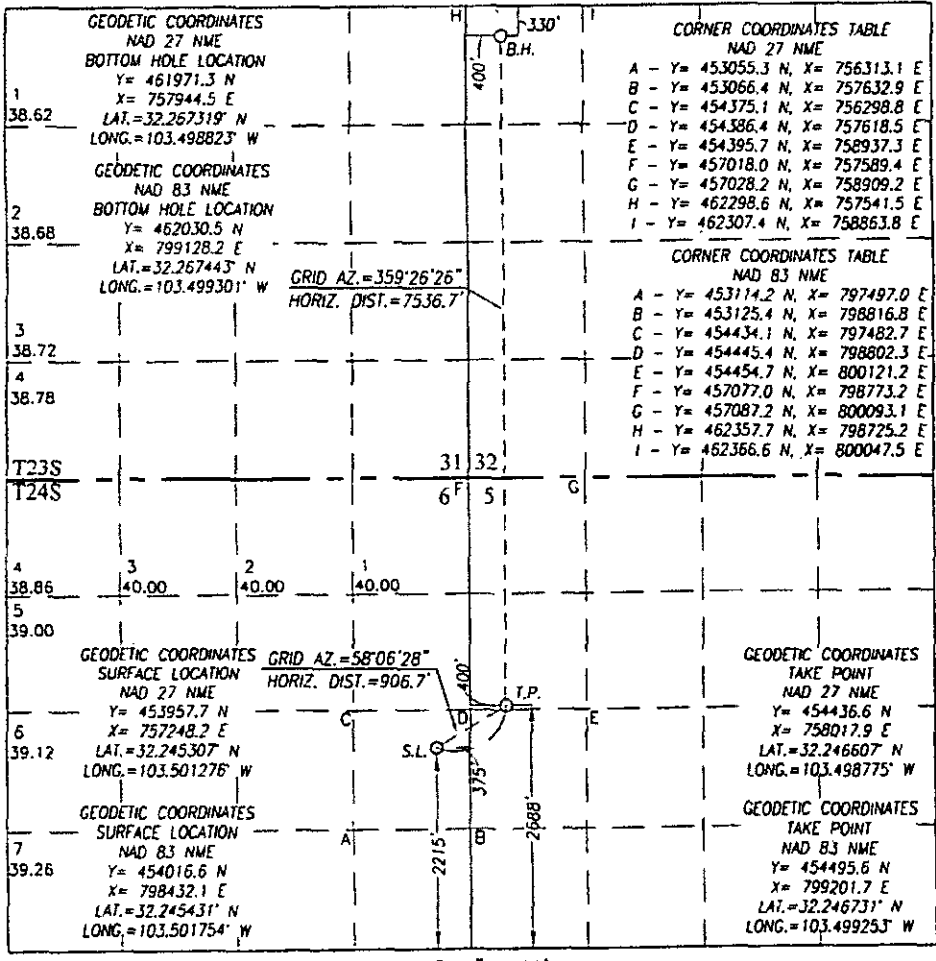
UL or lot No.	Section	Township	Range	Lot Idn	Feet from the	North/South line	Feet from the	East/West line	County
1	6	24-S	34-E		2215	SOUTH	375	EAST	LEA

Bottom Hole Location If Different From Surface

UL or lot No.	Section	Township	Range	Lot Idn	Feet from the	North/South line	Feet from the	East/West line	County
D	32	23-S	34-E		330	NORTH	400	WEST	LEA

Dedicated Acres	Joint or Infill	Consolidation Code	Order No.

NO ALLOWABLE WILL BE ASSIGNED TO THIS COMPLETION UNTIL ALL INTERESTS HAVE BEEN CONSOLIDATED OR A NON-STANDARD UNIT HAS BEEN APPROVED BY THE DIVISION



**OPERATOR CERTIFICATION**

I hereby certify that the information herein is true and complete to the best of my knowledge and belief, and that this organization either owns a working interest or unleased mineral interest in the land including the proposed bottom hole location or has a right to drill this well at this location pursuant to a contract with an owner of such mineral or working interest, or to a voluntary pooling agreement or a compulsory pooling order heretofore entered by the division.

Signature \_\_\_\_\_ Date \_\_\_\_\_

Printed Name \_\_\_\_\_

E-mail Address \_\_\_\_\_

**SURVEYOR CERTIFICATION**

I hereby certify that the well location shown on this plat was plotted from field notes of actual surveys made by me or under my supervision, and that the same is true and correct to the best of my belief.

OCTOBER 23 2015

Date of Survey \_\_\_\_\_  
Signature Ronald J. Eidson  
Professional Surveyor  
NEW MEXICO  
REGISTERED SURVEYOR  
3230

Ronald J. Eidson 11/23/2015  
Certificate Number \_\_\_\_\_  
Ronald J. Eidson 12641  
Ronald J. Eidson 3239

LSL REL. W.O.: 15.11.0935 JWSC W.O.: 15.13.1006

EXHIBIT **A**

# South Bell Lake Leases

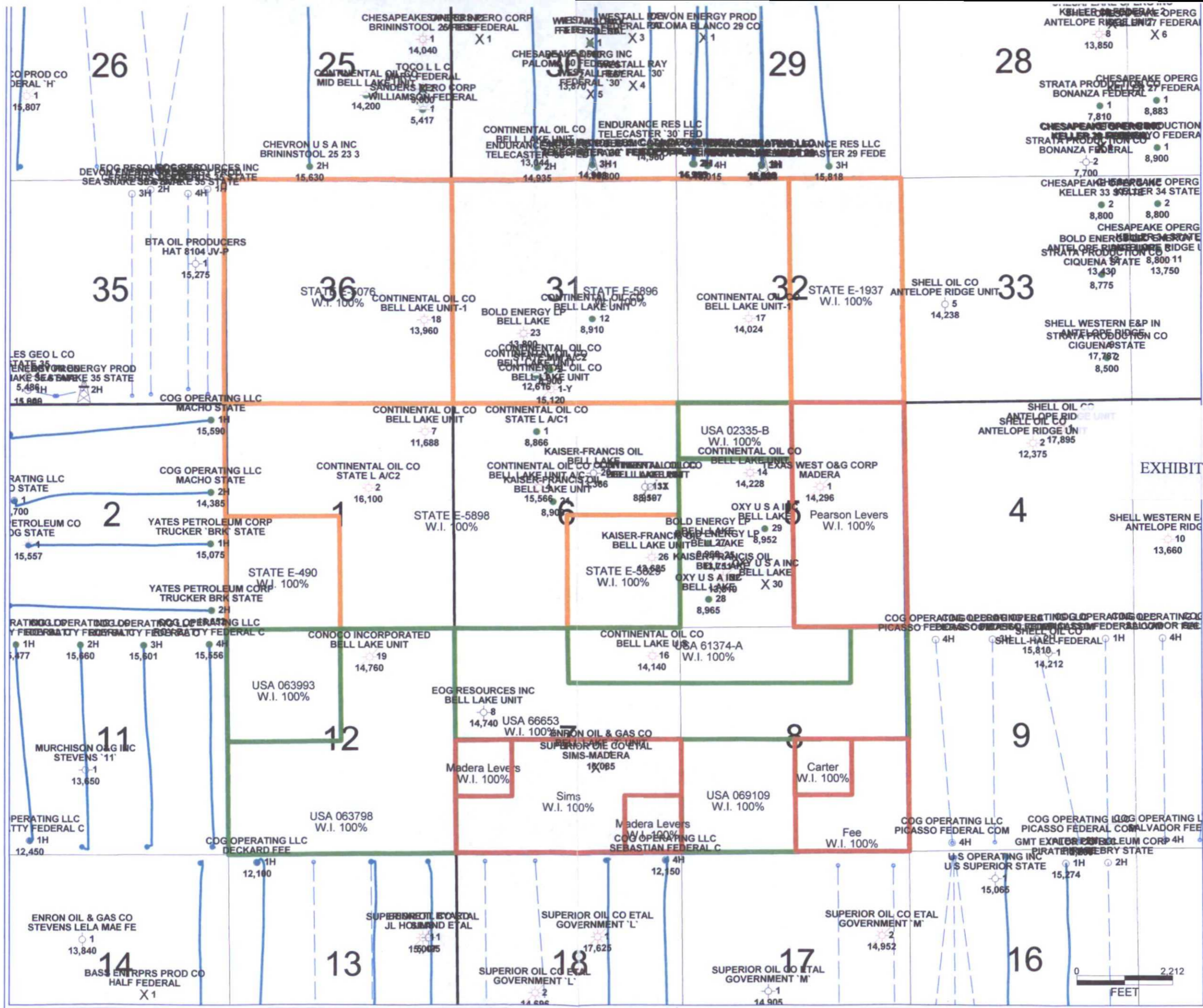


EXHIBIT B

## OCD Permitting

Home Land Searches Land Details

### Section : 05-24S-34E

Type: Normal

Total Acres: 639.68

County: Lea (25)

D (4) Federal <sup>1</sup> Federal <sup>2</sup> (25) 39.98	C (3) Federal <sup>1</sup> Federal <sup>2</sup> (25) 39.94	B (2) Federal <sup>1</sup> Federal <sup>2</sup> (25) 39.9	A (1) Federal <sup>1</sup> Federal <sup>2</sup> (25) 39.86
E (E) Fee <sup>1</sup> Federal <sup>2</sup> (25) 40	F (F) Fee <sup>1</sup> Federal <sup>2</sup> (25) 40	G (G) Fee <sup>1</sup> Fee <sup>2</sup> (25) 40	H (H) Fee <sup>1</sup> Fee <sup>2</sup> (25) 40
L (L) Fee <sup>1</sup> Federal <sup>2</sup> (25) 40	K (K) Fee <sup>1</sup> Federal <sup>2</sup> (25) 40	J (J) Fee <sup>1</sup> Fee <sup>2</sup> (25) 40	I (I) Fee <sup>1</sup> Fee <sup>2</sup> (25) 40
M (M) Fee <sup>1</sup> Federal <sup>2</sup> (25) 40	N (N) Fee <sup>1</sup> Federal <sup>2</sup> (25) 40	O (O) Fee <sup>1</sup> Fee <sup>2</sup> (25) 40	P (P) Fee <sup>1</sup> Fee <sup>2</sup> (25) 40

Note<sup>1</sup> = Surface Owner Rights

Note<sup>2</sup> = Sub-Surface Mineral Rights

#### Land Restrictions

No land restrictions found for this section.

[Return to Search](#)

## OCD Permitting

Home Land Searches Land Details

### Section : 32-23S-34E

Type: Normal

Total Acres: 640

County: Lea (25)

D (D) Fee <sup>1</sup> State <sup>2</sup> (25) 40	C (C) Fee <sup>1</sup> State <sup>2</sup> (25) 40	B (B) Fee <sup>1</sup> State <sup>2</sup> (25) 40	A (A) Fee <sup>1</sup> State <sup>2</sup> (25) 40
E (E) Fee <sup>1</sup> State <sup>2</sup> (25) 40	F (F) Fee <sup>1</sup> State <sup>2</sup> (25) 40	G (G) Fee <sup>1</sup> State <sup>2</sup> (25) 40	H (H) Fee <sup>1</sup> State <sup>2</sup> (25) 40
L (L) Fee <sup>1</sup> State <sup>2</sup> (25) 40	K (K) Fee <sup>1</sup> State <sup>2</sup> (25) 40	J (J) Fee <sup>1</sup> State <sup>2</sup> (25) 40	I (I) Fee <sup>1</sup> State <sup>2</sup> (25) 40
M (M) Fee <sup>1</sup> State <sup>2</sup> (25) 40	N (N) Fee <sup>1</sup> State <sup>2</sup> (25) 40	O (O) Fee <sup>1</sup> State <sup>2</sup> (25) 40	P (P) Fee <sup>1</sup> State <sup>2</sup> (25) 40

Note<sup>1</sup> = Surface Owner Rights

Note<sup>2</sup> = Sub-Surface Mineral Rights

#### Land Restrictions

No land restrictions found for this section.

[Return to Search](#)