

DATE IN 5/05/2016	DURANCE	ENGINEER mAm	LOGGED IN 5/05/2016	TYPE OLM	APP NO DMAm1612642710
----------------------	---------	-----------------	------------------------	-------------	--------------------------

ABOVE THIS LINE FOR DIVISION USE ONLY

## NEW MEXICO OIL CONSERVATION DIVISION

- Engineering Bureau -

1220 South St. Francis Drive, Santa Fe, NM 87505



### ADMINISTRATIVE APPLICATION CHECKLIST

THIS CHECKLIST IS MANDATORY FOR ALL ADMINISTRATIVE APPLICATIONS FOR EXCEPTIONS TO DIVISION RULES AND REGULATIONS WHICH REQUIRE PROCESSING AT THE DIVISION LEVEL IN SANTA FE

#### Application Acronyms:

[NSL-Non-Standard Location] [NSP-Non-Standard Proration Unit] [SD-Simultaneous Dedication]  
[DHC-Downhole Commingling] [CTB-Lease Commingling] [PLC-Pool/Lease Commingling]  
[PC-Pool Commingling] [OLS - Off-Lease Storage] [OLM-Off-Lease Measurement]  
[WFX-Waterflood Expansion] [PMX-Pressure Maintenance Expansion]  
[SWD-Salt Water Disposal] [IPI-Injection Pressure Increase]  
[EOR-Qualified Enhanced Oil Recovery Certification] [PPR-Positive Production Response]

#### [1] TYPE OF APPLICATION - Check Those Which Apply for [A]

- [A] Location - Spacing Unit - Simultaneous Dedication  
☐ NSL ☐ NSP ☐ SD

Check One Only for [B] or [C]

- [B] Commingling - Storage - Measurement  
☐ DHC ☐ CTB ☐ PLC ☐ PC ☐ OLS ☒ OLM

- [C] Injection - Disposal - Pressure Increase - Enhanced Oil Recovery  
☐ WFX ☐ PMX ☐ SWD ☐ IPI ☐ EOR ☐ PPR

- [D] Other: Specify \_\_\_\_\_

#### [2] NOTIFICATION REQUIRED TO: - Check Those Which Apply, or Does Not Apply

- [A] ☒ Working, Royalty or Overriding Royalty Interest Owners  
[B] ☐ Offset Operators, Leaseholders or Surface Owner  
[C] ☐ Application is One Which Requires Published Legal Notice  
[D] ☐ Notification and/or Concurrent Approval by BLM or SLO  
U.S. Bureau of Land Management - Commissioner of Public Lands, State Land Office  
[E] ☐ For all of the above, Proof of Notification or Publication is Attached, and/or,  
[F] ☐ Waivers are Attached

#### [3] SUBMIT ACCURATE AND COMPLETE INFORMATION REQUIRED TO PROCESS THE TYPE OF APPLICATION INDICATED ABOVE.

[4] CERTIFICATION: I hereby certify that the information submitted with this application for administrative approval is accurate and complete to the best of my knowledge. I also understand that no action will be taken on this application until the required information and notifications are submitted to the Division.

Note: Statement must be completed by an individual with managerial and/or supervisory capacity.

Amanda Avery  
Print or Type Name

Amanda Avery  
Signature

Regulatory Tech  
Title

5/4/16  
Date

aavery@concho.com  
e-mail Address

- OLM 105  
- COG operating, LLC  
229137

W41  
- MYOX 5 State 224  
30-015-43706  
Pool

- WC-015-6-06  
S2628050  
4 PM WOLF Camp  
98195

rec'd  
5-05-2016



May 5, 2016

New Mexico Oil Conservation Division  
1220 S St. Francis Drive  
Santa Fe, NM 87505

Dear Mr. McMillan,

COG Operating LLC respectfully requests approval for Off-Lease Measurement of gas only on the following well:

Myox 5 State Com #22H  
Eddy County  
API# 30-015-43706  
SHL 225' FSL & 2280' FEL of Sec 5-T26S- R29E  
BHL 330' FNL & 2310' FEL of Sec 32- T25S- R29E  
Wolfcamp

The Off-Lease Measurement meter will be located at the SRO State Unit #17H ,  
NWNW, Sec 9-T26S- R28E.

COG Operating LLC will keep all production separate.

I have attached proof of notice to our working interest owners, a diagram of our battery facility and a map with lease boundaries showing all well and facility locations.

Sincerely,

A handwritten signature in cursive script that reads "Amanda Avery".

Amanda Avery  
Regulatory Technician

---

CORPORATE ADDRESS

ONE CONCHO CENTER | 600 WEST ILLINOIS AVENUE | MIDLAND, TEXAS 79701  
P 432.683.7443 | F 432.683.7441

ARTESIA WEST OFFICE

2208 MAIN STREET | ARTESIA, NEW MEXICO 88210  
P 575.748.6940 | F 575.748.2096

DISTRICT I  
1825 N. FRANCIS DR., HOOVER, NM 88549  
Phone: (505) 503-0181 Fax: (505) 503-0720

DISTRICT II  
511 S. FIRST ST., ARTESIA, NM 88210  
Phone: (505) 746-1242 Fax: (505) 746-9720

DISTRICT III  
1000 RIO BRAZOS RD., AUSTIN, NM 87110  
Phone: (505) 334-0178 Fax: (505) 334-0170

DISTRICT IV  
1250 S. ST. FRANCIS DR., SANTA FE, NM 87503  
Phone: (505) 476-3400 Fax: (505) 476-3403

State of New Mexico  
Energy, Minerals & Natural Resources Department  
**OIL CONSERVATION DIVISION**  
1220 SOUTH ST. FRANCIS DR.  
Santa Fe, New Mexico 87505

Form C-102  
Revised August 1, 2011  
Submit one copy to appropriate  
District Office

☐ AMENDED REPORT

**WELL LOCATION AND ACREAGE DEDICATION PLAT**

API Number 30-015- <b>43706</b>	Pool Code <b>98195</b>	WC-015G- <b>06</b> <b>52628050;</b>	Pool Name <b>Wildcat; Wolfcamp</b>
Property Code <b>40306</b>	Property Name <b>MYOX 5 STATE</b>		Well Number <b>22H</b>
OCRID No. <b>229137</b>	Operator Name <b>COG OPERATING, LLC</b>		Elevation <b>3054.5'</b>

**Surface Location**

UL or lot No.	Section	Township	Range	Lot Idn	Feet from the	North/South line	Feet from the	East/West line	County
<b>0</b>	<b>5</b>	<b>26-S</b>	<b>28-E</b>		<b>225</b>	<b>SOUTH</b>	<b>2280</b>	<b>EAST</b>	<b>EDDY</b>

**Bottom Hole Location If Different From Surface**

UL or lot No.	Section	Township	Range	Lot Idn	Feet from the	North/South line	Feet from the	East/West line	County
<b>B</b>	<b>32</b>	<b>25-S</b>	<b>28-E</b>		<b>330</b>	<b>NORTH</b>	<b>2310</b>	<b>EAST</b>	<b>EDDY</b>

Dedicated Acres	Joint or Infill	Consolidation Code	Order No.
<b>320.65</b>			

NO ALLOWABLE WILL BE ASSIGNED TO THIS COMPLETION UNTIL ALL INTERESTS HAVE BEEN CONSOLIDATED  
OR A NON-STANDARD UNIT HAS BEEN APPROVED BY THE DIVISION

	<p><b>OPERATOR CERTIFICATION</b></p> <p>I hereby certify that the information herein is true and complete to the best of my knowledge and belief, and that this organization either owns a working interest or unleased mineral interest in the land including the proposed bottom hole location or has a right to drill this well at this location pursuant to a contract with no owner of such mineral or working interest, or to a voluntary pooling agreement or a compulsory pooling order heretofore entered by the division.</p> <p><i>Mayte Reyes</i> <b>4-5-2016</b> Signature Date</p> <p><b>Mayte Reyes</b> Printed Name</p> <p><b>mreyes1@concho.com</b> E-mail Address</p>
	<p><b>SURVEYOR CERTIFICATION</b></p> <p>I hereby certify that the well location shown on this plat was plotted from field notes of actual surveys made by me or under my supervision, and that the same is true and correct to the best of my belief.</p> <p><b>FEBRUARY 2, 2016</b> Date of Survey</p> <p>Signature &amp; Seal of Professional Surveyor</p> <p></p> <p><i>Chad L. Marcron</i> <b>2/8/16</b> Certificate No. CHAD MARCRON 17777 W.O. #16-66 DRAWN BY: AF</p>



May 5, 2016

COG Operating LLC  
2208 W Main Street  
Artesia, NM 88210

Dear Interest Owner,

This letter will serve as notice, under Rule 19.15.N.1207.A, that COG Operating LLC has requested administrative approval from the Oil and Gas Division in Santa Fe, NM for Off-Lease Measurement of gas only for the following well:

Myox 5 State #22H  
Eddy County, NM  
API# 30-015-43706  
SHL: 225' FSL & 2280' FEL of Sec 5- T26S R28E  
BHL: 330' FNL & 2310' FEL of Sec 32- T25S R28E  
Wolfcamp

The Off-Lease Measurement facility will be located at the SRO State Unit #17H  
990 'FNL & 330' FWL of Sec 9-T26S R28E.

Should you or your company have an objection, it must be filed in writing within twenty (20) days from the date of this notice. The Division Director may approve the Off-Lease Measurement Facility if no objection has been made within the twenty (20) days after the application has been received.

Sincerely,

A handwritten signature in cursive script that reads "Amanda Avery".

Amanda Avery  
Regulatory Tech

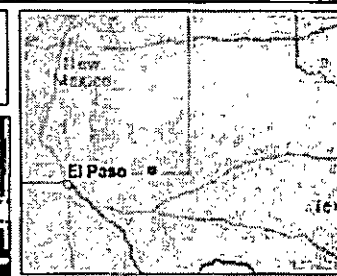
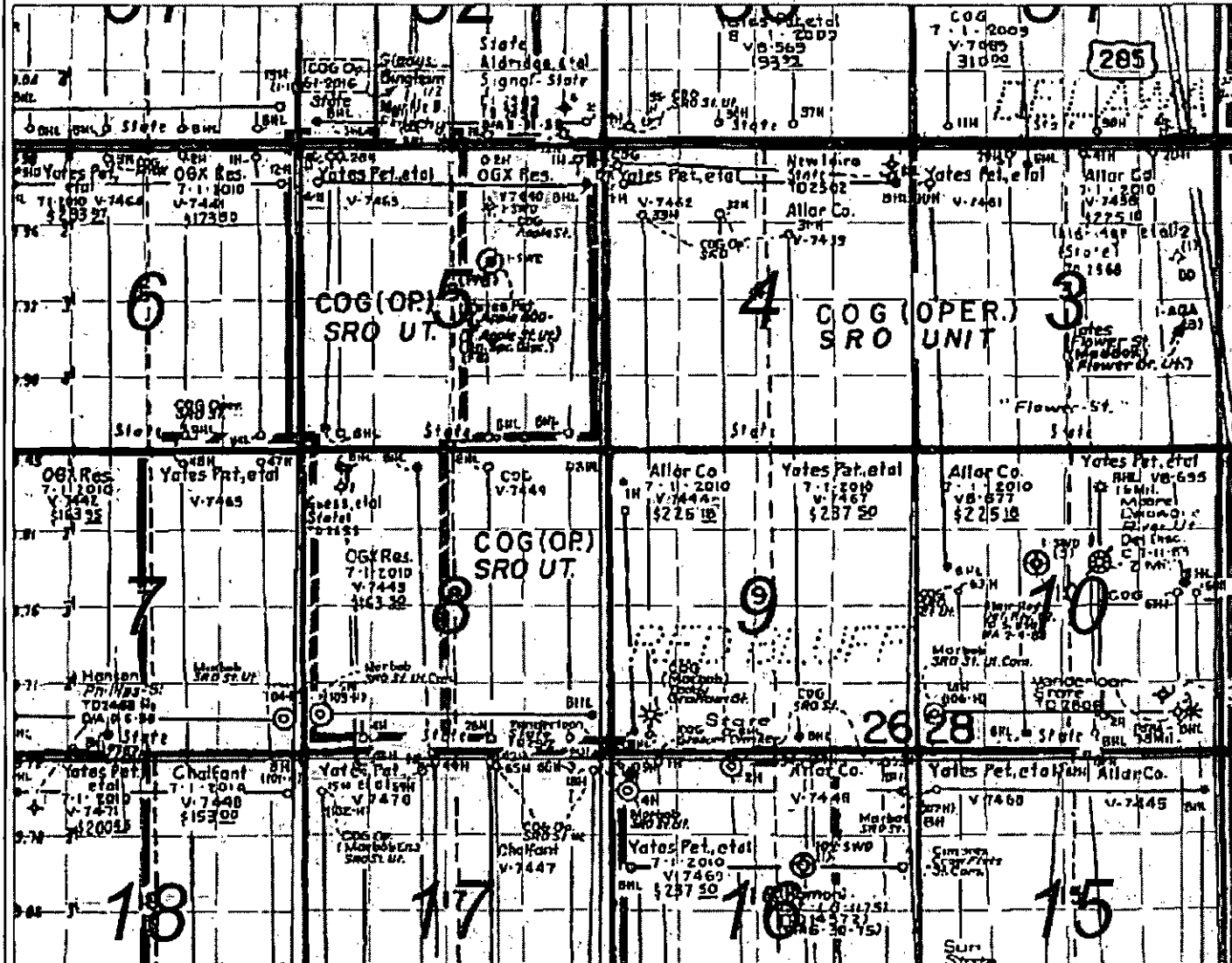
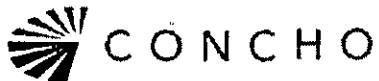
CORPORATE ADDRESS

ONE CONCHO CENTER | 600 WEST ILLINOIS AVENUE | MIDLAND, TEXAS 79701  
P 432.683.7443 | F 432.683.7441

ARTESIA WEST OFFICE

2208 MAIN STREET | ARTESIA, NEW MEXICO 88210  
P 575.746.6940 | F 575.746.2096

<i>Date Sent</i>	<i>Initials</i>	<i>Document Type</i>	<i>Well Name</i>	<i>Sent Certified Return Receipt to:</i>	<i>Receipt No.</i>
5/5/2016	AA	Off Lease Measurement	Myox 5 Com #22H	Abo Petrokem 105 S 4th St. Artesia, NM 88210	7013 3020 0000 8750 0170
5/5/2016	AA	Off Lease Measurement	Myox 5 Com #22H	Devon Energy 333 W Sheridan Ave OKC OK 73102	7013 3020 0000 8750 0163
5/5/2016	AA	Off Lease Measurement	Myox 5 Com #22H	Myco Industries PO Box 840 Artesia, NM 88210	7013 3020 0000 8750 0156
5/5/2016	AA	Off Lease Measurement	Myox 5 Com #22H	Nestegg Energy Corp 2308 Sierra Vista Rd Artesia, NM 88210	7013 3020 0000 8750 0149
5/5/2016	AA	Off Lease Measurement	Myox 5 Com #22H	OZY Y-1 Company PO Box 27570 Houston, TX 77046	7013 3020 0000 8750 0132
5/5/2016	AA	Off Lease Measurement	Myox 5 Com #22H	Yates Petroleum Corp 105 S 4th St Artesia, NM 88210	7013 3020 0000 8750 0125
5/5/2016	AA	Off Lease Measurement	Myox 5 Com #22H	Commissioner of Public Lands PO Box 1148 Santa Fe 87504	7013 3020 0000 8750 0200

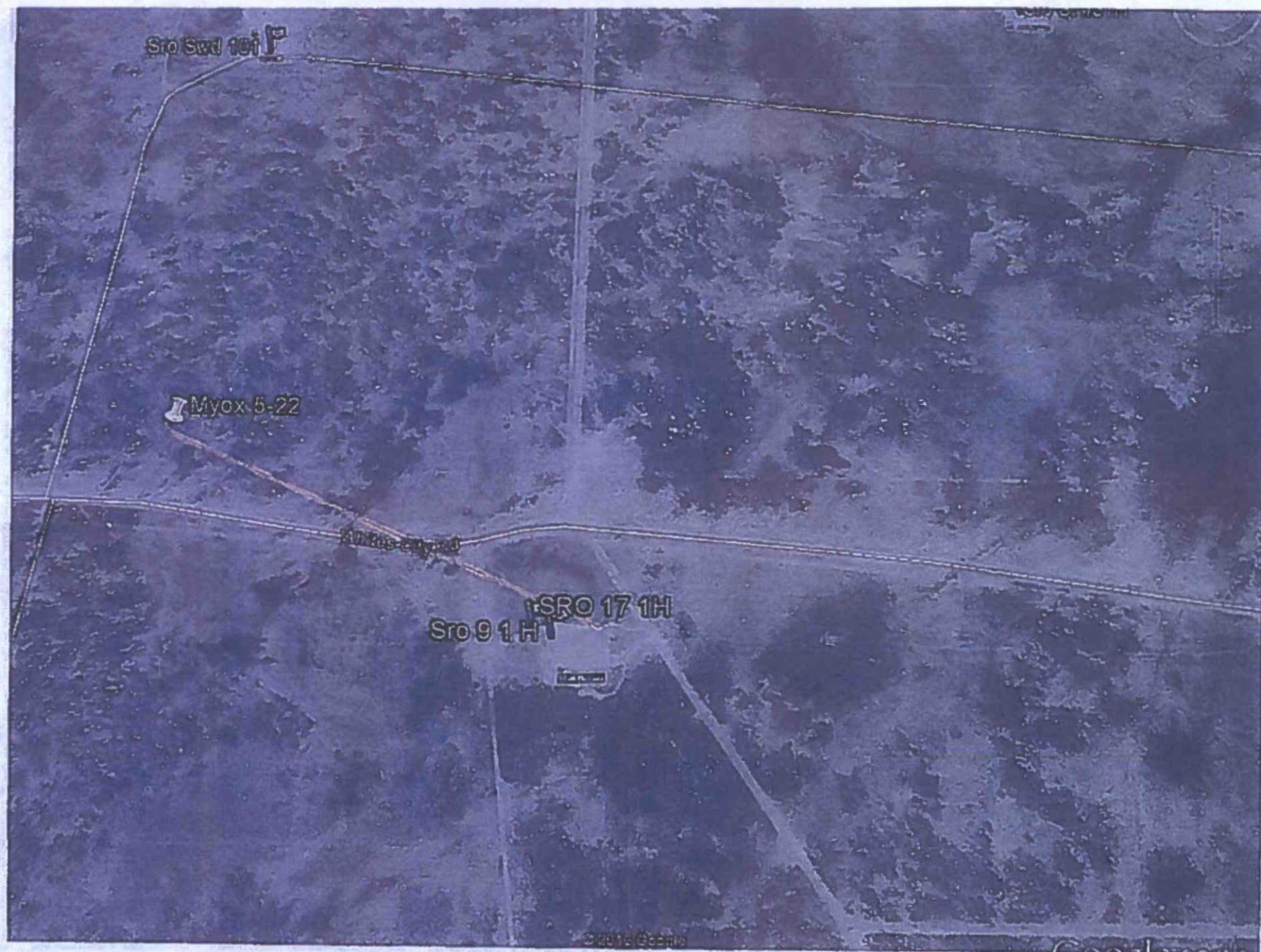


Legend

Map Scale 1:36,111

WGS\_1984\_Web\_Mercator\_Auxiliary\_Sphere



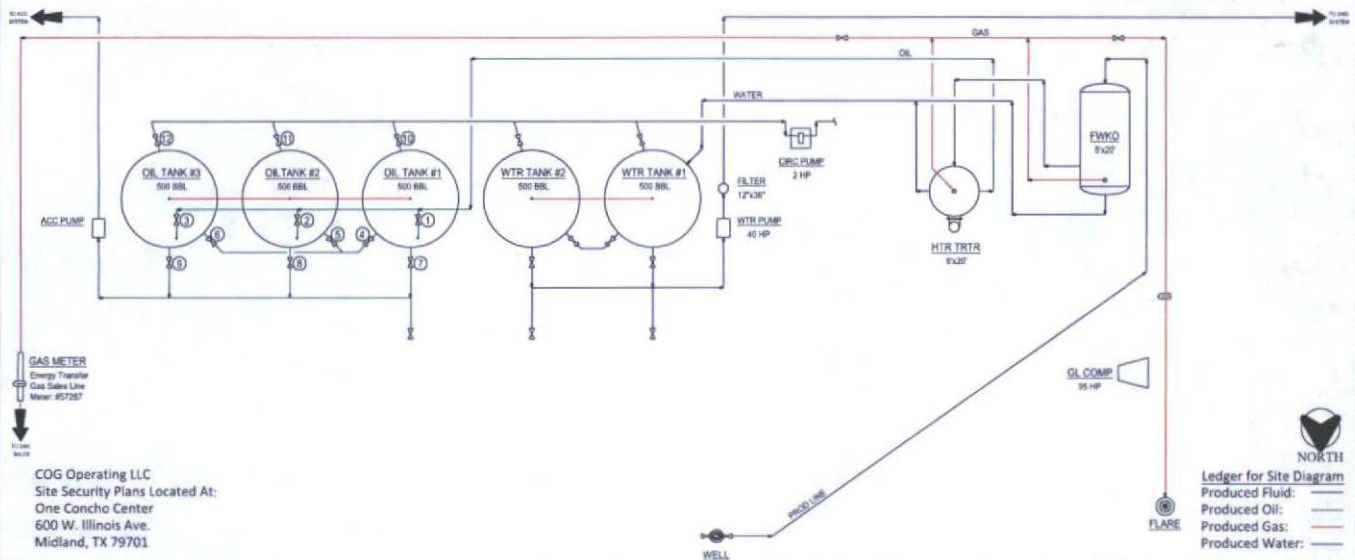


**SRO STATE COM 17H BATTERY**  
NWNW SECTION 9, T26S, R28E, UNIT D  
EDDY COUNTY, NM

**WELLS:**  
SRO STATE COM #017H: 30-015-38257

**Production Phase - Oil Tank #1**  
- Valve 1 open  
- Valves 2 and 3 closed  
- Valves 4, 5, and 6 open  
- Valves 7, 8, and 9 closed  
- Valve 10 open  
- Valves 11 and 12 closed

**Sales Phase - Oil Tank #1**  
- Valve 1 closed  
- Valves 2 or 3 open  
- Valve 4 closed  
- Valves 5 and 6 open  
- Valve 7 open  
- Valves 8 and 9 closed  
- Valve 10 closed  
- Valves 11 or 12 open



COG Operating LLC  
Site Security Plans Located At:  
One Concho Center  
600 W. Illinois Ave.  
Midland, TX 79701



**Ledger for Site Diagram**  
Produced Fluid:  
Produced Oil: —  
Produced Gas: —  
Produced Water: —

NOTES		CONFIDENTIALITY NOTICE		REVISIONS		PRODUCTION RECORD	
Type of Lease: State State Lease #: V074440000 Property Code: 40112 OGRID #: 229137		This document is the property of COG Operating LLC and is loaned to the user. It is to be used for the purpose of the lease only. It is not to be reproduced, distributed, or used for any other purpose without the written consent of COG Operating LLC. If it is reproduced, it must be clearly identified as a copy of the original. If it is used for any other purpose, it may result in legal action against the user.		NO.	DATE	DESCRIPTION	BY
				1	08/01/13	REVISION FOR NEW PRODUCTION	COG
				2	08/01/13	REVISION FOR NEW STATE COM 17H BATTERY	COG
				3	08/01/13	REVISION FOR NEW STATE COM 17H BATTERY	COG
		COG OPERATING LLC 800 WEST KILBOUR AVENUE MIDLAND, TEXAS 79701		NO.	DATE	DESCRIPTION	BY
				1	08/01/13	REVISION FOR NEW PRODUCTION	COG
				2	08/01/13	REVISION FOR NEW STATE COM 17H BATTERY	COG
				3	08/01/13	REVISION FOR NEW STATE COM 17H BATTERY	COG
				4	08/01/13	REVISION FOR NEW STATE COM 17H BATTERY	COG
				5	08/01/13	REVISION FOR NEW STATE COM 17H BATTERY	COG
				6	08/01/13	REVISION FOR NEW STATE COM 17H BATTERY	COG
				7	08/01/13	REVISION FOR NEW STATE COM 17H BATTERY	COG
				8	08/01/13	REVISION FOR NEW STATE COM 17H BATTERY	COG
				9	08/01/13	REVISION FOR NEW STATE COM 17H BATTERY	COG
				10	08/01/13	REVISION FOR NEW STATE COM 17H BATTERY	COG
				11	08/01/13	REVISION FOR NEW STATE COM 17H BATTERY	COG
				12	08/01/13	REVISION FOR NEW STATE COM 17H BATTERY	COG
				13	08/01/13	REVISION FOR NEW STATE COM 17H BATTERY	COG
				14	08/01/13	REVISION FOR NEW STATE COM 17H BATTERY	COG
				15	08/01/13	REVISION FOR NEW STATE COM 17H BATTERY	COG
				16	08/01/13	REVISION FOR NEW STATE COM 17H BATTERY	COG
				17	08/01/13	REVISION FOR NEW STATE COM 17H BATTERY	COG
				18	08/01/13	REVISION FOR NEW STATE COM 17H BATTERY	COG
				19	08/01/13	REVISION FOR NEW STATE COM 17H BATTERY	COG
				20	08/01/13	REVISION FOR NEW STATE COM 17H BATTERY	COG
				21	08/01/13	REVISION FOR NEW STATE COM 17H BATTERY	COG
				22	08/01/13	REVISION FOR NEW STATE COM 17H BATTERY	COG
				23	08/01/13	REVISION FOR NEW STATE COM 17H BATTERY	COG
				24	08/01/13	REVISION FOR NEW STATE COM 17H BATTERY	COG
				25	08/01/13	REVISION FOR NEW STATE COM 17H BATTERY	COG
				26	08/01/13	REVISION FOR NEW STATE COM 17H BATTERY	COG
				27	08/01/13	REVISION FOR NEW STATE COM 17H BATTERY	COG
				28	08/01/13	REVISION FOR NEW STATE COM 17H BATTERY	COG
				29	08/01/13	REVISION FOR NEW STATE COM 17H BATTERY	COG
				30	08/01/13	REVISION FOR NEW STATE COM 17H BATTERY	COG
				31	08/01/13	REVISION FOR NEW STATE COM 17H BATTERY	COG
				32	08/01/13	REVISION FOR NEW STATE COM 17H BATTERY	COG
				33	08/01/13	REVISION FOR NEW STATE COM 17H BATTERY	COG
				34	08/01/13	REVISION FOR NEW STATE COM 17H BATTERY	COG
				35	08/01/13	REVISION FOR NEW STATE COM 17H BATTERY	COG
				36	08/01/13	REVISION FOR NEW STATE COM 17H BATTERY	COG
				37	08/01/13	REVISION FOR NEW STATE COM 17H BATTERY	COG
				38	08/01/13	REVISION FOR NEW STATE COM 17H BATTERY	COG
				39	08/01/13	REVISION FOR NEW STATE COM 17H BATTERY	COG
				40	08/01/13	REVISION FOR NEW STATE COM 17H BATTERY	COG
				41	08/01/13	REVISION FOR NEW STATE COM 17H BATTERY	COG
				42	08/01/13	REVISION FOR NEW STATE COM 17H BATTERY	COG
				43	08/01/13	REVISION FOR NEW STATE COM 17H BATTERY	COG
				44	08/01/13	REVISION FOR NEW STATE COM 17H BATTERY	COG
				45	08/01/13	REVISION FOR NEW STATE COM 17H BATTERY	COG
				46	08/01/13	REVISION FOR NEW STATE COM 17H BATTERY	COG
				47	08/01/13	REVISION FOR NEW STATE COM 17H BATTERY	COG
				48	08/01/13	REVISION FOR NEW STATE COM 17H BATTERY	COG
				49	08/01/13	REVISION FOR NEW STATE COM 17H BATTERY	COG
				50	08/01/13	REVISION FOR NEW STATE COM 17H BATTERY	COG
				51	08/01/13	REVISION FOR NEW STATE COM 17H BATTERY	COG
				52	08/01/13	REVISION FOR NEW STATE COM 17H BATTERY	COG
				53	08/01/13	REVISION FOR NEW STATE COM 17H BATTERY	COG
				54	08/01/13	REVISION FOR NEW STATE COM 17H BATTERY	COG
				55	08/01/13	REVISION FOR NEW STATE COM 17H BATTERY	COG
				56	08/01/13	REVISION FOR NEW STATE COM 17H BATTERY	COG
				57	08/01/13	REVISION FOR NEW STATE COM 17H BATTERY	COG
				58	08/01/13	REVISION FOR NEW STATE COM 17H BATTERY	COG
				59	08/01/13	REVISION FOR NEW STATE COM 17H BATTERY	COG
				60	08/01/13	REVISION FOR NEW STATE COM 17H BATTERY	COG
				61	08/01/13	REVISION FOR NEW STATE COM 17H BATTERY	COG
				62	08/01/13	REVISION FOR NEW STATE COM 17H BATTERY	COG
				63	08/01/13	REVISION FOR NEW STATE COM 17H BATTERY	COG
				64	08/01/13	REVISION FOR NEW STATE COM 17H BATTERY	COG
				65	08/01/13	REVISION FOR NEW STATE COM 17H BATTERY	COG
				66	08/01/13	REVISION FOR NEW STATE COM 17H BATTERY	COG
				67	08/01/13	REVISION FOR NEW STATE COM 17H BATTERY	COG
				68	08/01/13	REVISION FOR NEW STATE COM 17H BATTERY	COG
				69	08/01/13	REVISION FOR NEW STATE COM 17H BATTERY	COG
				70	08/01/13	REVISION FOR NEW STATE COM 17H BATTERY	COG
				71	08/01/13	REVISION FOR NEW STATE COM 17H BATTERY	COG
				72	08/01/13	REVISION FOR NEW STATE COM 17H BATTERY	COG
				73	08/01/13	REVISION FOR NEW STATE COM 17H BATTERY	COG
				74	08/01/13	REVISION FOR NEW STATE COM 17H BATTERY	COG
				75	08/01/13	REVISION FOR NEW STATE COM 17H BATTERY	COG
				76	08/01/13	REVISION FOR NEW STATE COM 17H BATTERY	COG
				77	08/01/13	REVISION FOR NEW STATE COM 17H BATTERY	COG
				78	08/01/13	REVISION FOR NEW STATE COM 17H BATTERY	COG
				79	08/01/13	REVISION FOR NEW STATE COM 17H BATTERY	COG
				80	08/01/13	REVISION FOR NEW STATE COM 17H BATTERY	COG
				81	08/01/13	REVISION FOR NEW STATE COM 17H BATTERY	COG
				82	08/01/13	REVISION FOR NEW STATE COM 17H BATTERY	COG
				83	08/01/13	REVISION FOR NEW STATE COM 17H BATTERY	COG
				84	08/01/13	REVISION FOR NEW STATE COM 17H BATTERY	COG
				85	08/01/13	REVISION FOR NEW STATE COM 17H BATTERY	COG
				86	08/01/13	REVISION FOR NEW STATE COM 17H BATTERY	COG
				87	08/01/13	REVISION FOR NEW STATE COM 17H BATTERY	COG
				88	08/01/13	REVISION FOR NEW STATE COM 17H BATTERY	COG
				89	08/01/13	REVISION FOR NEW STATE COM 17H BATTERY	COG
				90	08/01/13	REVISION FOR NEW STATE COM 17H BATTERY	COG
				91	08/01/13	REVISION FOR NEW STATE COM 17H BATTERY	COG
				92	08/01/13	REVISION FOR NEW STATE COM 17H BATTERY	COG
				93	08/01/13	REVISION FOR NEW STATE COM 17H BATTERY	COG
				94	08/01/13	REVISION FOR NEW STATE COM 17H BATTERY	COG
				95	08/01/13	REVISION FOR NEW STATE COM 17H BATTERY	COG
				96	08/01/13	REVISION FOR NEW STATE COM 17H BATTERY	COG
				97	08/01/13	REVISION FOR NEW STATE COM 17H BATTERY	COG
				98	08/01/13	REVISION FOR NEW STATE COM 17H BATTERY	COG
				99	08/01/13	REVISION FOR NEW STATE COM 17H BATTERY	COG
				100	08/01/13	REVISION FOR NEW STATE COM 17H BATTERY	COG

**CONCHO**  
NEW MEXICO BASIN ASSET  
PRODUCTION FACILITIES  
SITE FACILITY DIAGRAM  
SRO STATE COM 17H BATTERY  
EDDY COUNTY, NM  
D-1700-81-005