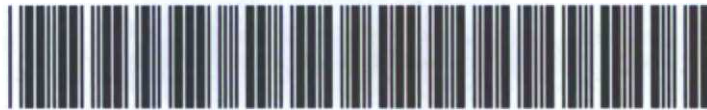




AE Order Number Banner

Report Description

This report shows an AE Order Number in Barcode format for purposes of scanning. The Barcode format is Code 39.



App Number: pPAC0724829906

1RP - 1540

SOUTHERN UNION GAS COMPANY

Basin Environmental Service Technologies, LLC

3100 Plains Highway
Lovington, New Mexico 88260
jwlowry@basinenv.com
Office: (575) 396-2378

Fax: (575) 396-1429



REMEDIATION SUMMARY AND PROPOSED SOIL AND GROUNDWATER INVESTIGATION STRATEGY

**SOUTHERN UNION GAS SERVICES
A-7 Bettis
Lea County, New Mexico
UNIT "L" (NW/SW), Section 14, Township 21 South, Range 37 East NMPM
Latitude 32° 28.522' North, Longitude 103° 08.529' West
NMOCD Reference #1RP 1540
NMOCD Reference #1RP 09-5-2186**

Prepared For:

Southern Union Gas Services, Ltd
801 Loop 464
Monahans, Texas 79756

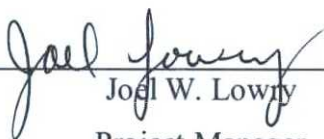
HOBBS OCD

AUG 15 2012

RECEIVED

Prepared By:
Basin Environmental Service Technologies, LLC
2800 Plains Highway
Lovington, New Mexico 88260

July 2012


Joel W. Lowry
Project Manager

Approved
Staff Signing
Env. Specialist
NMOCD - DIST 1
8/15/12
- WILL FIELD VISIT TO
WITNESS LOCATING
OF BORINGS

TABLE OF CONTENTS

INTRODUCTION AND BACKGROUND INFORMATION.....	1
NMOCD SITE CLASSIFICATION.....	1
SUMMARY OF SOIL REMEDIATION ACTIVITIES	2
PROPOSED SOIL AND GROUNDWATER INVESTIGATION STRATEGY.....	3
REPORTING	4
LIMITATIONS.....	4
DISTRIBUTION.....	6

FIGURES

Figure 1 – Site Location Map

Figure 2 – Site, Sample and Photo Location Map

TABLES

Table 1 – Concentrations of Benzene, BTEX, TPH and Chloride in Soil

APPENDICES

Appendix A - Photographs

Appendix B - Laboratory Analytical Reports

Appendix C - Release Notification and Corrective Action (Form C-141)

INTRODUCTION AND BACKGROUND INFORMATION

Basin Environmental Service Technologies, LLC (Basin) on behalf of Southern Union Gas Services (Southern Union) has prepared this "Remediation Summary and Proposed Soil and Groundwater Investigation Strategy" for the release site known as A-7 Bettis (SUGS Project #2009-010). The legal description of the release site is Unit Letter "L" (NW/SW), Section 14, Township 21 South, Range 37 East, NMPM, in Lea County, New Mexico. The property affected by the release is owned by Mr. Charlie Bettis of Eunice, New Mexico. The release site GPS coordinates are 32° 28.522' North and 103° 08.529' West. Please reference Figure 1 for a Site Location Map and Figure 2 for a Site, Sample and Photo Location Map. Photographs are provided as Appendix A.

On August 22, 2007, Southern Union discovered a release had occurred on the A-7 pipeline. The failure of the ten inch (10") low pressure natural gas pipeline resulted in a release of a mixture of crude oil, produced water and natural gas. A recent rain shower had added an unknown volume of water to the release. The release was verbally reported to the New Mexico Oil Conservation Division (NMOCD) on August 22, 2007. The "Release Notification and Corrective Action" (Form C-141) indicated approximately two hundred (200) barrels of fluid was released, and approximately one hundred thirty (130) barrels of fluid were recovered using a vacuum truck. Approximately eighty-one (81) MCF of natural gas was released to the atmosphere as a result of the release. Following the discovery of the release a temporary pipeline clamp was employed to mitigate the release. The release affected approximately 26,250 square feet of pasture land.

The initial Form C-141 (1RP 1540) was submitted and approved by the NMOCD Hobbs District Office on August 31, 2007. On March 24, 2009, the initial Form C-141 was resubmitted and approved by the NMOCD Hobbs District Office. The March 24, 2009, submittal was assigned the NMOCD reference #1RP 09-5-2186. Please reference Appendix C for copies of each of the submitted "Release Notification and Corrective Action" forms.

This "Remediation Summary and Proposed Soil and Groundwater Investigation Strategy" was prepared from notes and analytical results received from a previous environmental contractor.

NMOCD SITE CLASSIFICATION

A depth-to-groundwater reference map utilized by the NMOCD indicates groundwater should be encountered at less than fifty feet (50') below ground surface (bgs). Based on the NMOCD ranking system, twenty (20) points will be assigned to the site as a result of this criterion.

A search of the New Mexico Water Rights Reporting System (NMWRRS) database indicated there were no water wells within 1,000 feet of the release. Based on the NMOCD ranking system, zero (0) points will be assigned to the site as a result of this criterion.

There are no surface water bodies within 1,000 feet of release. Based on the NMOCD ranking system, zero (0) points were assigned to the site as a result of the criterion.

The NMOCD guidelines indicate the A-7 Bettis release site has a ranking score of twenty (20) points. The soil remediation levels for a site with a ranking score of twenty (20) points are as follows:

- Benzene – 10 mg/Kg (ppm)
- BTEX – 50 mg/Kg (ppm)
- TPH – 100 mg/Kg (ppm)

The New Mexico Administrative Code (NMAC) does not currently specify a remediation level for chloride concentrations in soil. Chloride remediation levels are set by the NMOCD on a site-specific basis

SUMMARY OF SOIL REMEDIATION ACTIVITIES

On February 26, 2009, horizontal delineation of the impacted area began; ten (10) surface soil samples (1A, 1B, 2A, 2B, 3A, 3B, 4A, 4B, 5A and 5B) were collected and submitted to the laboratory. Each of the soil samples were analyzed for concentrations of total petroleum hydrocarbon (TPH) using EPA Method SW846-8015B and chloride using EPA Method 4500-Cl-B. Analytical results indicated TPH concentrations ranged from less than the laboratory method detection limit (MDL) of 10 mg/Kg in soil samples 1A, 1B, 2A, 2B, 4A, 4B and 5B to 11,000 mg/Kg in soil sample 5A. Chloride concentrations ranged from less than the laboratory MDL of 16.0 mg/Kg in soil sample 4B to 2,120 mg/Kg in soil sample 2A. Soil sample 5B was analyzed for concentrations of benzene, toluene, ethylbenzene and xylene (BTEX) using EPA Method SW846-8021b. The analytical results indicated BTEX constituent concentrations were less than the appropriate laboratory MDL. Table 1 summarizes the “Concentrations of Benzene, BTEX, TPH and Chlorides in Soil. Laboratory analytical reports are provided as Appendix B.

On March 12, 2009, excavation of the affected soil began. Impacted soil was stockpiled adjacent to the excavation, pending final disposition. On March 13, 2009, a composite soil sample (Chlorides Soil Pile) was collected from the stockpile and analyzed for concentrations of chloride. The analytical results indicated the chloride concentration was less than the laboratory MDL of 16 mg/Kg.

Beginning on March 16, 2009, stockpiled soil was transported to the Southern Union Landfarm (Permit # NM-02-0019) north of Jal, New Mexico.

On March 17, 2009, two composite soil samples (Soil Pile #1 South and Soil Pile #2 North) were collected to evaluate the hydrocarbon impact within the stockpile. Analytical results indicated the TPH concentrations in Soil Pile #1 South and Soil Pile #2 North was 2,140 mg/Kg and 1,705 mg/Kg, respectively. In addition, four (4) excavation floor soil samples (Bottom Start, RP 13', RP 16' and RP 18') were collected and submitted to the laboratory for TPH analysis. The analytical results indicated TPH concentrations ranged from 8,770 mg/Kg in soil sample RP 16' to 16,000 mg/Kg in soil sample Bottom Start.

On March 18, 2009, two (2) sidewall soil samples (#1 Sample and #1 Sample West Bank) were collected from the excavation and analyzed for concentrations BTEX, TPH and chloride. Analytical results indicated the benzene and BTEX concentration were less than the laboratory MDL of 0.050 mg/Kg and 0.300 mg/Kg, respectively, for each of the samples submitted. The TPH concentration was 25.3 mg/Kg for each of the submitted soil samples, and the chloride concentration for soil samples #1 Sample and #1 Sample West Bank were 144 mg/Kg and 176 mg/Kg, respectively.

On March 19, 2009, an excavation floor sample (Bottom Hole 28') was collected from the floor of the excavation and analyzed for concentrations of BTEX and TPH. The analytical results indicated the

benzene concentration was 1.52 mg/Kg, the BTEX concentration was 77.22 mg/Kg and the TPH concentration was 6,250 mg/Kg.

On March 24, 2009, two (2) excavation floor soil samples (Bottom Hole 37' and Bottom Hole 39') were collected and submitted to the laboratory. Soil sample Bottom Hole 37' was analyzed for concentrations of TPH. The analytical results indicated the TPH concentration was 6,120 mg/Kg. Soil sample Bottom Hole 39' was analyzed for concentrations of TPH and BTEX. Analytical results indicated the TPH concentration was 5,630 mg/Kg, the benzene concentration was 1.04 mg/Kg and the BTEX concentration was 113.34 mg/Kg.

On March 31, 2009, one (1) excavation floor soil sample (Bottom) and four (4) sidewall soil samples (West Bank N, West Bank S, East Bank S and North Bank) were collected and analyzed for concentrations of BTEX and TPH. Analytical results indicated benzene concentrations ranged from 0.25 mg/Kg in soil sample West Bank S to 39.6 mg/Kg in soil sample East Bank S. BTEX concentrations ranged from 20.261 mg/Kg in soil sample West Bank S to 77.321 mg/Kg in soil sample North Bank. TPH concentrations ranged from 2,872 mg/Kg in soil sample West Bank S to 5,930 mg/Kg in soil sample North Bank.

On July 9, 2010, one (1) excavation floor soil sample (Bottom Hole #4 40 ft.) was collected and submitted to the laboratory and analyzed for concentrations of BTEX and TPH. Analytical results indicated the benzene concentration was 0.453 mg/Kg, the BTEX concentration was 29.223 mg/Kg and the TPH concentration was 5,930 mg/Kg.

On July 10, 2010, one (1) excavation floor soil sample (Last Sample 44 ft.) was collected and submitted to the laboratory and analyzed for concentrations of BTEX and TPH. The analytical results indicated the benzene concentration was 0.814 mg/Kg, the BTEX concentration was 46.594 mg/Kg and the TPH concentration was 5,100 mg/Kg.

The excavation of the release site is currently at a depth of approximately forty-four (44) feet below ground surface. Approximately 2,550 cubic yards (cy) of impacted soil was transported to the Southern Union Landfarm for treatment.

On October 21, 2010, representatives of Southern Union Gas Services and a representative of the NMOCD – Hobbs District Office met to discuss a path forward for closure of the release site. The NMOCD representative requested a minimum of five (5) soil borings be advanced around the perimeter of the excavation to demonstrate vertical and horizontal delineation at the release site. Based on the inferred depth to groundwater (less than 50 feet bgs) and the depth of impact (greater than 44 feet bgs), select soil borings will likely be converted to groundwater monitor wells.

PROPOSED SOIL AND GROUNDWATER INVESTIGATION STRATEGY

Based on the existing soil analytical data, field observations and at the request of the NMOCD – Hobbs District Office, Southern Union Gas Services proposes to advance a minimum of five (5) soil borings (SB-1 through SB-5) around the perimeter of the existing A-7 Bettis excavation. The soil borings will be advanced to the groundwater interface (approximately 50 feet bgs). Should olfactory and visual observations indicate groundwater has been impacted; the affected soil boring will be converted to a two (2) inch diameter monitor well.

- The proposed soil borings will offset the existing excavation approximately thirty (30) feet to provide a safe working environment for drilling personnel and to minimize the potential for drilling air to infiltrate the sidewalls of the existing excavation. The infiltration of drilling air to the sidewalls of the excavation could result in a catastrophic failure of the excavation sidewalls, potentially harming personnel and the integrity of the A-7 pipeline.
- During the installation of the soil borings, soil samples will be collected at five (5) foot drilling intervals and field screened using a Photo Ionization Detector (PID) and chloride field test kit. Selected soil samples will be submitted to the laboratory for determination of concentrations of BTEX, TPH and chloride. Soil boring and/or monitor well logs and laboratory analytical reports will be provided to the NMOCD-Hobbs District Office in the *Soil and Groundwater Investigation Summary*. Driller's logs will be provided to the New Mexico Office of the State Engineer (NMOSE) - Roswell District Office.
- If monitor wells are warranted, groundwater monitor wells will be developed, gauged and sampled using EPA Standard Methods. Groundwater samples will be submitted to Xenco Laboratories, Inc., of Odessa, Texas, for determination of concentrations of chloride in accordance with EPA Method 300.0, BTEX in accordance with EPA Method SW846-8021b, and/or total dissolved solids (TDS) in accordance with SM2540C. Results from groundwater sampling events will be submitted to the NMOCD-Hobbs District Office in a *Soil and Groundwater Investigation Summary*. Based on the analytical results of the initial groundwater investigation, additional monitor wells may be required to adequately delineate any impact to groundwater at the site.
- Following the advancement of soil borings and/or the installation of the monitor wells, Southern Union Gas Services will request NMOCD approval to partially backfill the existing excavation to a depth of fifteen (15) feet bgs. Southern Union will partially backfill the excavation with non-impacted soil purchased from the landowner. Southern Union maintains the current depth of the excavation (approximately 44 feet bgs) constitutes a threat to public safety, the safety of our contractors and the integrity of the Southern Union A-7 pipeline.
- Southern Union will pursue a risk-based closure strategy for soil closure at the A-7 Bettis release site, employing a twenty (20) mil polyurethane liner set at approximately fifteen (15) feet bgs.

REPORTING

On review and approval of this proposal by the NMOCD and review by the NMOSE, Southern Union is prepared to begin the activities summarized in the *Proposed Soil and Groundwater Investigation Strategy* section of this report. On completion of the proposed field activities, Southern Union will submit a *Soil and Groundwater Investigation Summary* to the NMOCD - Hobbs District Office, documenting field activities and the laboratory analytical results of initial groundwater sampling.

LIMITATIONS

Basin Environmental Service Technologies, LLC, has prepared this "Remediation Summary and Proposed Soil and Groundwater Investigation Strategy" report to the best of its ability. No other warranty, expressed or implied, is made or intended.

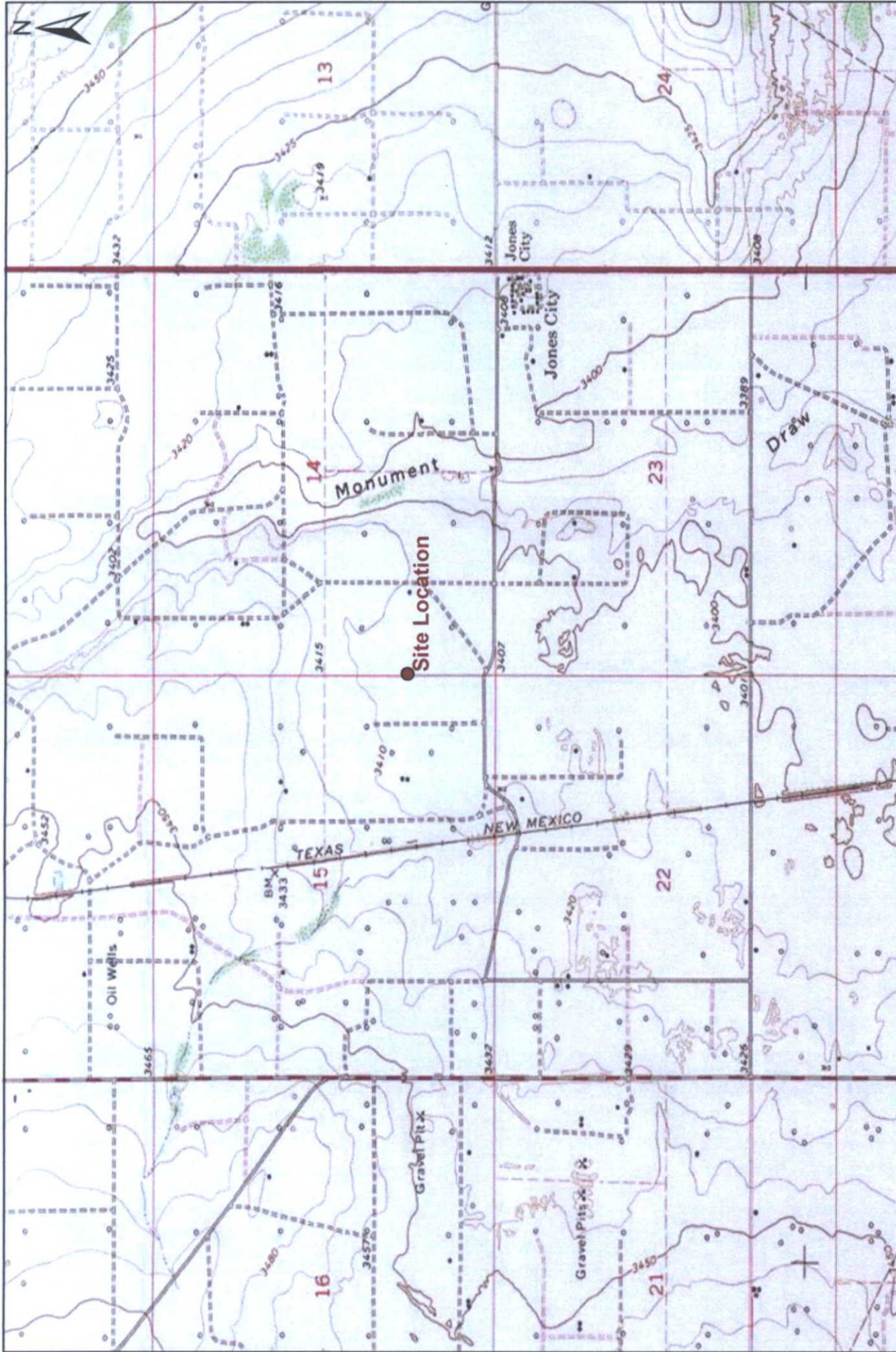
Basin Environmental Service Technologies, LLC, has examined and relied upon documents referenced in the report and has relied on oral statements made by certain individuals. Basin Environmental Service Technologies, LLC, has not conducted an independent examination of the facts contained in referenced materials and statements. Basin has presumed the genuineness of the documents and that the information provided in documents or statements is true and accurate. Basin Environmental Service Technologies, LLC, has prepared this report, in a professional manner, using the degree of skill and care exercised by similar environmental consultants. Basin Environmental Service Technologies, LLC, also notes that the facts and conditions referenced in this report may change over time and the conclusions and recommendations set forth herein are applicable only to the facts and conditions as described at the time of this report.

This report has been prepared for the benefit of Southern Union Gas Services. The information contained in this report, including all exhibits and attachments, may not be used by any other party without the express consent of Basin Environmental Service Technologies, LLC, and/or Southern Union Gas Services.

DISTRIBUTION:

- Copy 1: Geoffrey Leking
New Mexico Oil Conservation Division
District 1
1625 French Drive
Hobbs, New Mexico 88240
geoffreyr.leking@state.nm.us
- Copy 2: Margaret Wolf
New Mexico Office of the State Engineer
1900 West Second Street
Roswell, New Mexico 88201
margaret.wolf@state.nm.us
- Copy 3: Rose Slade
Southern Union Gas Services, Ltd
801 S. Loop 464
Monahans, Texas 79756
rose.slade@sug.com
- Copy 4: Basin Environmental Services Technologies, LLC
3100 Plains Highway
Lovington, New Mexico 88260

Figures



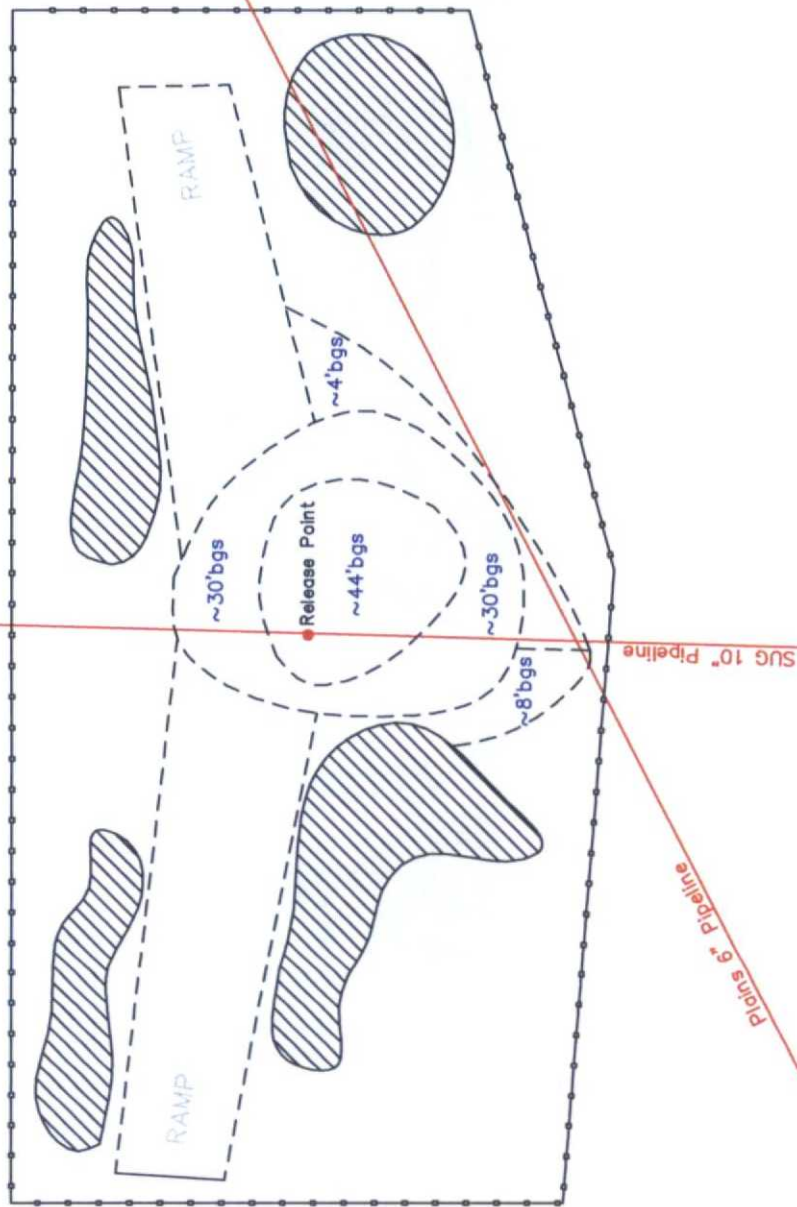
Basin Environmental Service Technologies, LLC
 3100 Plains Hwy.
 Lovington, NM 88260



Figure 1
Site Location Map
Southern Union Gas Services
A-7 Bettis
Lea County, New Mexico



Drawn By: BJA	Checked By: BRB
July 13, 2012	Scale: 1" = 2000'



Legend

- Release Point
- Excavation Extent
- Stockpiled Soil
- Road
- Pipeline
- Fence

Figure 2
Site & Sample Location Map
Southern Union Gas Services
A-7 North Site/Bettis
NMOCD Ref 1RP # 09.5.2186
Lea County, New Mexico

Basin Environmental Services

Prep By: JWL
July 5, 2012
Checked By: BJA
Scale 1"=20'

Tables

TABLE 1

SOUTHERN UNION GAS SERVICES
A-7 NORTH SITE / BETTIS
NMOCD REF # 1RP 09-5-2186
LEA COUNTY, NEW MEXICO

SAMPLE LOCATION	SAMPLE DEPTH (BGS)	SAMPLE DATE	METHOD: EPA SW 846-8021B, 5030					METHOD: 8015B				METHOD: 4500-CL-B
			BENZENE (mg/Kg)	TOLUENE (mg/Kg)	ETHYL-BENZENE (mg/Kg)	TOTAL XYLENES (mg/Kg)	TOTAL BTX (mg/Kg)	GRO C ₆ -C ₁₀ (mg/Kg)	DRO C ₁₀ -C ₂₈ (mg/Kg)	TOTAL TPH C ₆ -C ₂₈ (mg/Kg)	CHLORIDE (mg/Kg)	
1A	-	02/26/09	-	-	-	-	-	<10.0	<10.0	<10.0	256	
1B	-	02/26/09	-	-	-	-	-	<10.0	<10.0	<10.0	16	
2A	-	02/26/09	-	-	-	-	-	<10.0	<10.0	<10.0	2,120	
2B	-	02/26/09	-	-	-	-	-	<10.0	<10.0	<10.0	208	
3A	-	02/26/09	-	-	-	-	-	<10.0	51.4	51.4	32	
3B	-	02/26/09	-	-	-	-	-	<10.0	10.8	10.8	64	
4A	-	02/26/09	-	-	-	-	-	<10.0	<10.0	<10.0	32	
4B	-	02/26/09	-	-	-	-	-	<10.0	<10.0	<10.0	<16	
5A	-	02/26/09	-	-	-	-	-	<50.0	11,000	11,000	672	
5B	-	02/26/09	<0.050	<0.050	<0.050	<0.300	<0.300	<10.0	<10.0	<10.0	336	
Chlorides Soil Pile	-	03/13/09	-	-	-	-	-	-	-	-	<16	
Soil Pile #1 South	-	03/17/09	-	-	-	-	-	<10	2,140	2,140	-	
Soil Pile #2 North	-	03/17/09	-	-	-	-	-	215	1,490	1,705	-	
Bottom Start	-	03/17/09	-	-	-	-	-	-	-	-	-	
RP 13'	13 feet	03/17/09	-	-	-	-	-	3,900	12,100	16,000	-	
RP 16'	16 feet	03/17/09	-	-	-	-	-	3,970	9,360	13,330	-	
RP 18'	18 feet	03/17/09	-	-	-	-	-	2,270	6,500	8,770	-	
#1 Sample	-	03/18/09	<0.050	<0.050	<0.050	<0.300	<0.300	<10.0	25.3	25.3	144	
#1 Sample West Bank	-	03/18/09	<0.050	<0.050	<0.050	<0.300	<0.300	<10.0	25.3	25.3	176	
Bottom Hole @ 28"	28 feet	03/19/09	1.52	14.4	15.8	45.5	77.22	1,790	4,460	6,250	-	
Bottom Hole @ 28"	28 feet	03/19/09	-	-	-	-	-	*4.78	*3.19	-	-	
Bottom Hole 37 ft	37 feet	03/24/09	-	-	-	-	-	1,670	4,450	6,120	-	
Bottom Hole 39 ft	39 feet	03/24/09	1.04	23.2	23.3	65.8	113.34	1,790	3,840	5,630	-	
Bottom Hole 39 ft	39 feet	03/24/09	-	-	-	-	-	*3.96	*3.98	-	-	
Bottom	-	03/31/09	0.962	9.56	16.0	45.6	72.122	1,790	3,450	5,240	-	
West Bank N	-	03/31/09	0.585	9.98	14.0	43	67.565	1,920	2,980	4,900	-	
West Bank S	-	03/31/09	0.25	0.071	6.74	13.2	20.261	762	2,110	2,872	-	
East Bank S	-	03/31/09	39.6	<0.050	<0.050	<0.300	39.6	1,790	3,450	5,240	-	
North Bank	-	03/31/09	0.421	10.6	16.4	49.9	77.321	1,680	4,250	5,930	-	
Bottom Hole #4 40 ft	40 feet	07/09/10	0.453	5.95	5.22	17.6	29.223	1,680	4,250	5,930	-	
Last Sample 44 ft	44 feet	07/10/09	0.814	9.76	7.52	28.5	46.594	1,620	3,480	5,100	-	
NMOCD Cleanup Criteria	-	-	10	-	-	-	50	-	-	100	-	

* Indicates TCLP analysis

Appendices

Appendix A
Photographs



A-7 Bettis – Surface Staining from Initial Release



A-7 Bettis – Surface Staining from Initial Release



A-7 Bettis – Initial Excavation Activities and Pipeline Replacement (Looking South)



A-7 Bettis – Initial Excavation Activities and Pipeline Replacement (Looking North)



A-7 Bettis – Current Excavation (Looking Northeast)



A-7 Bettis – Current Excavation (Looking Southeast)



A-7 Bettis – Current Excavation (Looking East)



A-7 Bettis – Extent of Current Excavation

Appendix B
Laboratory Analytical Reports



PHONE (575) 393-2326 • 101 E. MARLAND • HOBBS, NM 88240

ANALYTICAL RESULTS FOR
SOUTHERN UNION GAS SERVICES
ATTN: TONY SAVOIE
P.O. BOX 1226
JAL, NM 88252

Receiving Date: 02/26/09
Reporting Date: 03/03/09
Project Number: 2009-010
Project Name: A-7 NORTH SITE / BETTIS
Project Location: NORTH OF EUNICE

Sampling Date: 02/26/09
Sample Type: SOIL
Sample Condition: COOL & INTACT
Sample Received By: ML
Analyzed By: CK/AB/HM

LAB NUMBER	SAMPLE ID	GRO (C ₆ -C ₁₀) (mg/kg)	DRO (C ₁₀ -C ₂₈) (mg/kg)	CI* (mg/kg)
		02/27/09	02/27/09	02/26/09
H16976-1	1A	<10.0	<10.0	256
H16976-2	1B	<10.0	<10.0	16
H16976-3	2A	<10.0	<10.0	2,120
H16976-4	2B	<10.0	<10.0	208
H16976-5	3A	<10.0	51.4	32
H16976-6	3B	<10.0	10.8	64
H16976-7	4A	<10.0	<10.0	32
Quality Control		549	553	500
True Value QC		500	500	500
% Recovery		110	111	100
Relative Percent Difference		0.6	11.4	< 0.1

METHODS: TPH GRO & DRO: EPA SW-846 8015 M; CI: Std. Methods 4500-CI'B

*Analyses performed on 1:4 w:v aqueous extracts.


Chemist


Date

H16976 TCL SUGS

PLEASE NOTE: Liability and Damages. Cardinal's liability and client's exclusive remedy for any claim arising, whether based in contract or tort, shall be limited to the amount paid by client for analyses. All claims, including those for negligence and any other cause whatsoever shall be deemed waived unless made in writing and received by Cardinal within thirty (30) days after completion of the applicable service. In no event shall Cardinal be liable for incidental or consequential damages, including, without limitation, business interruptions, loss of use, or loss of profits incurred by client, its subsidiaries, affiliates or successors arising out of or related to the performance of services hereunder by Cardinal, regardless of whether such claim is based upon any of the above-stated reasons or otherwise. Results relate only to the samples identified above. This report shall not be reproduced except in full with written approval of Cardinal Laboratories.



PHONE (575) 393-2326 • 101 E. MARLAND • HOBBS, NM 88240

ANALYTICAL RESULTS FOR
SOUTHERN UNION GAS SERVICES
ATTN: TONY SAVOIE
P.O. BOX 1226
JAL, NM 88252

Receiving Date: 02/26/09
Reporting Date: 03/03/09
Project Number: 2009-010
Project Name: A-7 NORTH SITE / BETTIS
Project Location: NORTH OF EUNICE

Sampling Date: 02/26/09
Sample Type: SOIL
Sample Condition: COOL & INTACT
Sample Received By: ML
Analyzed By: CK/AB/HM

LAB NUMBER	SAMPLE ID	GRO (C ₆ -C ₁₀) (mg/kg)	DRO (>C ₁₀ -C ₂₈) (mg/kg)	CI* (mg/kg)
		03/02/09	03/02/09	02/26/09
H16976-8	4B	<10.0	<10.0	< 16
H16976-9	5A	<50.0	11,000	672
H16976-10	5B	<10.0	<10.0	336
Quality Control		476	546	500
True Value QC		500	500	500
% Recovery		95.2	109	100
Relative Percent Difference		0.6	6.6	< 0.1

METHODS: TPH GRO & DRO: EPA SW-846 8015 M; CI: Std. Methods 4500-CI'B

*Analyses performed on 1:4 w:v aqueous extracts.


Chemist


Date

H16976 TCL SUGS

PLEASE NOTE: **Liability and Damages.** Cardinal's liability and client's exclusive remedy for any claim arising, whether based in contract or tort, shall be limited to the amount paid by client for analyses. All claims, including those for negligence and any other cause whatsoever shall be deemed waived unless made in writing and received by Cardinal within thirty (30) days after completion of the applicable service. In no event shall Cardinal be liable for incidental or consequential damages, including, without limitation, business interruptions, loss of use, or loss of profits incurred by client, its subsidiaries, affiliates or successors arising out of or related to the performance of services hereunder by Cardinal, regardless of whether such claim is based upon any of the above-stated reasons or otherwise. Results relate only to the samples identified above. This report shall not be reproduced except in full with written approval of Cardinal Laboratories.



ARDINAL LABORATORIES

PHONE (575) 393-2326 • 101 E. MARLAND • HOBBS, NM 88240

ANALYTICAL RESULTS FOR
SOUTHERN UNION GAS SERVICES
ATTN: TONY SAVOIE
P.O. BOX 1226
JAL, NM 88252

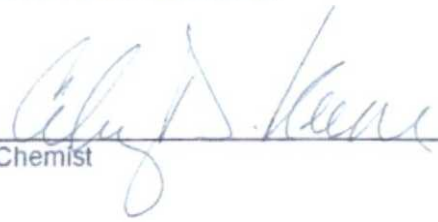
Receiving Date: 02/26/09
Reporting Date: 02/27/09
Project Number: 2009-010
Project Name: A-7 NORTH SITE / BETTIS
Project Location: NORTH OF EUNICE

Sampling Date: 02/26/09
Sample Type: SOIL
Sample Condition: COOL & INTACT
Sample Received By: ML
Analyzed By: ZL

LAB NUMBER	SAMPLE ID	BENZENE (mg/kg)	TOLUENE (mg/kg)	ETHYL BENZENE (mg/kg)	TOTAL XYLENES (mg/kg)
ANALYSIS DATE		02/26/09	02/26/09	02/26/09	02/26/09
H16976-10	5B	<0.050	<0.050	<0.050	<0.300
Quality Control		0.050	0.051	0.051	0.154
True Value QC		0.050	0.050	0.050	0.150
% Recovery		100	102	102	103
Relative Percent Difference		2.0	1.9	<1.0	1.3

METHOD: EPA SW-846 8021B

TEXAS NELAP CERTIFICATION T104704398-08-TX FOR BENZENE, TOLUENE, ETHYL BENZENE,
AND TOTAL XYLENES.


Chemist


Date

PLEASE NOTE: **Liability and Damages.** Cardinal's liability and client's exclusive remedy for any claim arising, whether based in contract or tort, shall be limited to the amount paid by client for analyses. All claims, damages, losses, and any other cause whatsoever shall be deemed waived unless made in writing and received by Cardinal within thirty (30) days after completion of the applicable service. In no event shall Cardinal be liable for incidental or consequential damages, including, without limitation, business interruptions, loss of use, or loss of profits incurred by client, its subsidiaries, affiliates or successors arising out of or related to the performance of services hereunder by Cardinal, regardless of whether such claim is based upon any of the above-stated reasons or otherwise. Results relate only to the samples identified above. This report shall not be reproduced except in full with written approval of Cardinal Laboratories.

**CARDINAL LABORATORIES**

101 East Marland, Hobbs, NM 88240

(505) 393-2326 FAX (505) 393-2476

CHAIN-OF-CUSTODY AND ANALYSIS REQUEST

Company Name: <u>Southern Union Gas Services</u>				BILL TO		ANALYSIS REQUEST															
Project Manager: <u>Tony Savoie</u>				P.O. #:		<div style="display: flex; justify-content: space-between; padding: 5px;"> <div style="writing-mode: vertical-rl; transform: rotate(180deg);">8015 m</div> <div style="writing-mode: vertical-rl; transform: rotate(180deg);">BTEX 8021 B</div> <div style="writing-mode: vertical-rl; transform: rotate(180deg);">chlorides 4500-CLB</div> </div>															
Address: <u>P.O. Box 1226</u>				Company:																	
City: <u>JAL</u>		State: <u>NM</u> Zip: <u>88252</u>		Attn:																	
Phone #: <u>575-631-9376</u>		Fax #:		Address:																	
Project #: <u>2009-010</u>		Project Owner:		City:																	
Project Name: <u>A-7 North Site / Betis</u>				State: Zip:																	
Project Location: <u>North of Eunice</u>				Phone #:																	
Sampler Name: <u>Gary Coy</u>				Fax #:																	
FOR LAB USE ONLY																					
Lab I.D.	Sample I.D.	(G)RAB OR (C)OMP.	# CONTAINERS	MATRIX	PRESERV.											SAMPLING					
				GROUNDWATER																	
				WASTEWATER																	
				SOIL																	
				OIL																	
				SLUDGE																	
				OTHER :																	
				ACID/BASE:																	
				ICE / COOL																	
				OTHER :																	
						DATE	TIME														
<u>H16976-1</u>	<u>1 A</u>	<u>6</u>	<u>1</u>			<u>2/26/09</u>	<u>0800</u>	<input checked="" type="checkbox"/>													
<u>-2</u>	<u>1 B</u>	<u>11</u>	<u>1</u>			<u>4</u>	<u>0809</u>	<input checked="" type="checkbox"/>													
<u>-3</u>	<u>2 A</u>	<u>11</u>	<u>1</u>			<u>"</u>	<u>0902</u>	<input checked="" type="checkbox"/>													
<u>-4</u>	<u>2 B</u>	<u>11</u>	<u>1</u>			<u>"</u>	<u>0910</u>	<input checked="" type="checkbox"/>													
<u>-5</u>	<u>3 A</u>	<u>11</u>	<u>1</u>			<u>"</u>	<u>0920</u>	<input checked="" type="checkbox"/>													
<u>-6</u>	<u>3 B</u>	<u>11</u>	<u>1</u>			<u>"</u>	<u>0930</u>	<input checked="" type="checkbox"/>													
<u>-7</u>	<u>4 A</u>	<u>11</u>	<u>1</u>			<u>"</u>	<u>01015</u>	<input checked="" type="checkbox"/>													
<u>-8</u>	<u>4 B</u>	<u>11</u>	<u>1</u>			<u>"</u>	<u>01030</u>	<input checked="" type="checkbox"/>													
<u>-9</u>	<u>5 A</u>	<u>11</u>	<u>1</u>			<u>"</u>	<u>0813</u>	<input checked="" type="checkbox"/>													
<u>-10</u>	<u>5 B</u>	<u>11</u>	<u>1</u>			<u>11</u>	<u>0914</u>	<input checked="" type="checkbox"/>	<input checked="" type="checkbox"/>	<input checked="" type="checkbox"/>											

PLEASE NOTE: Liability and Damages. Cardinal's liability and client's exclusive remedy for any claim arising whether based in contract or tort, shall be limited to the amount paid by the client for the analyses. All claims, including those for negligence and any other cause whatsoever shall be deemed waived unless made in writing and received by Cardinal within 30 days after completion of the applicable service. In no event shall Cardinal be liable for incidental or consequential damages, including without limitation, business interruptions, loss of use, or loss of profits incurred by client, its subsidiaries, affiliates or successors arising out of or related to the performance of services hereunder by Cardinal, regardless of whether such claim is based upon any of the above stated reasons or otherwise.

Relinquished By: <u>Gary Coy</u>	Date: <u>2-26-09</u>	Received By: <u>Misty LeBart</u>	Phone Result: <input type="checkbox"/> Yes <input type="checkbox"/> No	Add'l Phone #:
	Time: <u>1110</u>		Fax Result: <input type="checkbox"/> Yes <input type="checkbox"/> No	Add'l Fax #:
Relinquished By:	Date:	Received By:	REMARKS:	
	Time:			
Delivered By: (Circle One)		Sample Condition	CHECKED BY:	
Sampler - UPS - Bus - Other:		Cool Intact <input type="checkbox"/> Yes <input type="checkbox"/> No <input type="checkbox"/> Yes <input type="checkbox"/> No	(Initials) <u>UCXB</u>	

† Cardinal cannot accept verbal changes. Please fax written changes to 505-393-2476



PHONE (575) 393-2326 • 101 E. MARLAND • HOBBS, NM 88240

ANALYTICAL RESULTS FOR
SOUTHERN UNION GAS SERVICES
ATTN: TONY SAVOIE
P.O. BOX 1226
JAL, NM 88252


Receiving Date: 03/13/09
Reporting Date: 03/13/09
Project Number: NOT GIVEN
Project Name: A-7
Project Location: NOT GIVEN


Analysis Date: 03/13/09
Sampling Date: 03/13/09
Sample Type: SOIL
Sample Condition: INTACT
Sample Received By: CK
Analyzed By: TR

LAB NO	SAMPLE ID	Cl ⁻ (mg/kg)
H17055-1	CHLORIDES SOIL PILE	< 16
Quality Control		500
True Value QC		500
% Recovery		100
Relative Percent Difference		< 0.1

METHOD: Standard Methods 4500-Cl B

Note: Analysis performed on a 1:4 w:v aqueous extract.


Chemist


Date

H17055 SUGS

PLEASE NOTE: **Liability and Damages.** Cardinal's liability and client's exclusive remedy for any claim arising, whether based in contract or tort, shall be limited to the amount paid by client for analyses. All claims, including those for negligence and any other cause whatsoever shall be deemed waived unless made in writing and received by Cardinal within thirty (30) days after completion of the applicable service. In no event shall Cardinal be liable for incidental or consequential damages, including, without limitation, business interruptions, loss of use, or loss of profits incurred by client, its subsidiaries, affiliates or successors arising out of or related to the performance of services hereunder by Cardinal, regardless of whether such claim is based upon any of the above-stated reasons or otherwise. Results relate only to the samples identified above. This report shall not be reproduced except in full with written approval of Cardinal Laboratories.



101 East Marland, Hobbs, NM 88240

(505) 393-2326, FAX (505) 393-2476

CHAIN-OF-CUSTODY AND ANALYSIS REQUEST

PLEASE NOTE: Liability and Damages. Cardinal's liability and client's exclusive remedy for any claim arising whether based in contract or tort, shall be limited to the amount paid by the client for the analyses. All claims, including those for negligence and any other cause whatsoever shall be deemed waived unless made in writing and received by Cardinal within 30 days after completion of the applicable service. In no event shall Cardinal be liable for incidental or consequential damages, including without limitation, business interruptions, loss of use, or loss of profits incurred by client, its subsidiaries, affiliates or successors arising out of or related to the performance of services hereunder by Cardinal, regardless of whether such claim is based upon any of the above stated reasons or otherwise.

Relinquished By:		Date:	Received By:	Phone Result: <input type="checkbox"/> Yes <input type="checkbox"/> No	Add'l Phone #:
Time:				Fax Result: <input type="checkbox"/> Yes <input type="checkbox"/> No	Add'l Fax #:
Relinquished By: <i>Gary Coy</i>		Date: <i>3/13/09</i>	Received By: <i>Chris Moore</i>	REMARKS: <i>e-mail results</i>	
Time: <i>8:35</i>					
Delivered By: (Circle One)			Sample Condition	CHECKED BY:	
Sampler - UPS - Bus - Other:			Cool Intact	(Initials)	
			<input type="checkbox"/> Yes <input type="checkbox"/> No	<i>cm</i>	

† Cardinal cannot accept verbal changes. Please fax written changes to 505-393-2476



101 East Marland, Hobbs, NM 88240

(505) 393-2326 FAX (505) 393-2476

BILL TO

ANALYSIS REQUEST

H17067
-2

PLEASE NOTE: Liability and Damages. Cardinal's liability and client's exclusive remedy for any claim arising whether based in contract or tort, shall be limited to the amount paid by the client for the analyses. All claims, including those for negligence and any other cause whatsoever shall be deemed waived unless made in writing and received by Cardinal within 30 days after completion of the applicable service. In no event shall Cardinal be liable for incidental or consequential damages, including without limitation, business interruptions, loss of use, or loss of profits incurred by client, its subsidiaries, affiliates or successors arising out of or related to the performance of services hereunder by Cardinal, regardless of whether such claim is based upon any of the above stated reasons or otherwise.

Relinquished By: <u>Gary Coy</u> Relinquished By: <u>Gary Coy</u> Delivered By: (Circle One) Sampler - UPS - Bus - Other:		Date: <u>3-17-09</u> Time: <u>0900</u> Date: <u> </u> Time: <u> </u>		Received By: <u>Misty LeBout</u> Received By: <u> </u> Sample Condition Cool Intact <input type="checkbox"/> Yes <input checked="" type="checkbox"/> No <input type="checkbox"/> Yes <input checked="" type="checkbox"/> No CHECKED BY: (Initials) <u>MLB</u>		Phone Result: <input type="checkbox"/> Yes <input type="checkbox"/> No Add'l Phone #: Fax Result: <input type="checkbox"/> Yes <input type="checkbox"/> No Add'l Fax #: REMARKS: <u>Email Results to Tony</u> <u>call Gary w/results 575-605-1748</u>	
------------------------------------------------------------------------------------------------------------------------------------	--	-------------------------------------------------------------------------------------------------	--	---------------------------------------------------------------------------------------------------------------------------------------------------------------------------------------------------------------------------------------------------------------------------------------	--	-------------------------------------------------------------------------------------------------------------------------------------------------------------------------------------------------------------------------------------------------------------------	--

† Cardinal cannot accept verbal changes. Please fax written changes to 505-393-2476



ARDINAL LABORATORIES

PHONE (575) 393-2326 • 101 E. MARLAND • HOBBS, NM 88240

ANALYTICAL RESULTS FOR
SOUTHERN UNION GAS SERVICES
ATTN: TONY SAVOIE
P.O. BOX 1226
JAL, NM 88252

Receiving Date: 03/17/09
Reporting Date: 03/19/09
Project Number: NOT GIVEN
Project Name: NOT GIVEN
Project Location: NOT GIVEN

Sampling Date: 03/17/09
Sample Type: SOIL
Sample Condition: INTACT
Sample Received By: CK
Analyzed By: AB

LAB NUMBER	SAMPLE ID	GRO (C ₆ -C ₁₀) (mg/kg)	DRO (>C ₁₀ -C ₂₈) (mg/kg)
		03/18/09	03/18/09
H17072-1	BOTTOM START	3,900	12,100
H17072-2	RP 13 ^o	3,970	9,360
H17072-3	RP 16 ^o	2,270	6,500
H17072-4	RP 18 ^o	3,290	7,670
Quality Control		505	561
True Value QC		500	500
% Recovery		101	112
Relative Percent Difference		0.6	0.1

METHODS: TPH GRO & DRO: EPA SW-846 8015 M


Chemist


Date

H17072 T SUGS

PLEASE NOTE: **Liability and Damages.** Cardinal's liability and client's exclusive remedy for any claim arising, whether based in contract or tort, shall be limited to the amount paid by client for analyses. All claims, including those for negligence and any other cause whatsoever shall be deemed waived unless made in writing and received by Cardinal within thirty (30) days after completion of the applicable service. In no event shall Cardinal be liable for incidental or consequential damages, including, without limitation, business interruptions, loss of use, or loss of profits incurred by client, its subsidiaries, affiliates or successors arising out of or related to the performance of services hereunder by Cardinal, regardless of whether such claim is based upon any of the above-stated reasons or otherwise. Results relate only to the samples identified above. This report shall not be reproduced except in full with written approval of Cardinal Laboratories.



† Cardinal cannot accept verbal changes. Please fax written changes to 505-393-2476



ANALYTICAL RESULTS FOR
SOUTHERN UNION GAS SERVICES
ATTN: TONY SAVOIE
P.O. BOX 1226
JAL. NM 88252

Sampling Date: 03/18/09
Sample Type: SOIL
Sample Condition: INTACT
Sample Received By: ML
Analyzed By: AB/ZL/HM

*Analyses performed on 1:4 w:v aqueous extracts.

03/24/09
Date

PLEASE NOTE: Liability and Damages. Cardinal's liability and client's exclusive remedy for any claim arising, whether based in contract or tort, shall be limited to the amount paid by client for analyses. All claims, including those for negligence and any other cause whatsoever shall be deemed waived unless made in writing and received by Cardinal within thirty (30) days after completion of the applicable service. In no event shall Cardinal be liable for incidental or consequential damages, including, without limitation, business interruptions, loss of use, or loss of profits incurred by client, its subsidiaries, affiliates or successors arising out of or related to the performance of services hereunder by Cardinal, regardless of whether such claim is based upon any of the above-stated reasons or otherwise. Results relate only to the samples identified above. This report shall not be reproduced except in full with written approval of Cardinal Laboratories.

**CARDINAL LABORATORIES**

101 East Marland, Hobbs, NM 88240

(505) 393-2326 FAX (505) 393-2476

CHAIN-OF-CUSTODY AND ANALYSIS REQUEST

Company Name: <u>Southern Union</u>				BILL TO				ANALYSIS REQUEST														
Project Manager: <u>Tony SAVOIE</u>				P.O. #:																		
Address:				Company:																		
City: <u>Eunice</u> State: <u>NM</u> Zip: <u>88231</u>				Attn:																		
Phone #:				Address:																		
Project #:				City:																		
Project Name: <u>2009-010</u>				State: Zip:																		
Project Location: <u>A-7</u>				Phone #:																		
Sampler Name: <u>G. Coy</u>				Fax #:																		
FOR LAB USE ONLY				MATRIX		PRESERV.		SAMPLING														
Lab I.D.	Sample I.D.	(G)RAB OR (C)OMP.	# CONTAINERS	GROUNDWATER	WASTEWATER	SOIL	OIL	SLUDGE	OTHER:	ACID/BASE:	ICE / COOL	OTHER:	DATE	TIME								
141707A-1	RP #1 #1 Sample					✓							3-18-09	0800	✓	✓	✓					
-2	RP #1 #1 Sample West Bank					✓							3-18-09	0815	✓	✓	✓					

PLEASE NOTE: Liability and Damages: Cardinal's liability and client's exclusive remedy for any claim arising whether based in contract or tort, shall be limited to the amount paid by the client for the analyses. All claims, including those for negligence and any other cause whatsoever, shall be deemed waived unless made in writing and received by Cardinal within 30 days after completion of the applicable service. In no event shall Cardinal be liable for incidental or consequential damages, including without limitation, business interruptions, loss of use, or loss of profits incurred by client, its subsidiaries, affiliates or successors arising out of or related to the performance of services hereunder by Cardinal, regardless of whether such claim is based upon any of the above stated reasons or otherwise.

Relinquished By:	Date:	Received By:	Phone Result:	<input type="checkbox"/> Yes	<input type="checkbox"/> No	Add'l Phone #:
<u>Gary Coy</u>	<u>3-18-09</u>	<u>[Signature]</u>	Fax Result:	<input type="checkbox"/> Yes	<input type="checkbox"/> No	Add'l Fax #:
Relinquished By:	Date:	Received By:	REMARKS:			
	Time:		<u>EMAIL Results</u>			
Delivered By: (Circle One)		Sample Condition	CHECKED BY:			
Sampler - UPS - Bus - Other:		Cool Intact	(Initials)			
		<input type="checkbox"/> Yes <input type="checkbox"/> No	<u>UCAB</u>			

† Cardinal cannot accept verbal changes. Please fax written changes to 505-393-2476



PHONE (575) 393-2326 • 101 E. MARLAND • HOBBS, NM 88240

ANALYTICAL RESULTS FOR
SOUTHERN UNION GAS SERVICES
ATTN: TONY SAVOIE
P.O. BOX 1226
JAL, NM 88252

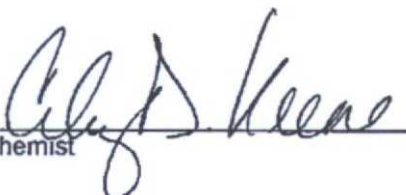
Receiving Date: 03/19/09
Reporting Date: 03/23/09
Project Number: 2009-010
Project Name: A-7
Project Location: BETTIS

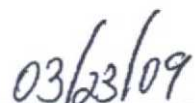
Sampling Date: 03/19/09
Sample Type: SOIL
Sample Condition: INTACT
Sample Received By: ML
Analyzed By: AB

LAB NUMBER	SAMPLE ID	GRO (C ₆ -C ₁₀) (mg/kg)	DRO (C ₁₀ -C ₂₈) (mg/kg)
------------	-----------	------------------------------------------------------	-------------------------------------------------------

ANALYSIS DATE	03/20/09	03/20/09
H17089-1 BOTTOM HOLE 28'	1,790	4,460
Quality Control	494	556
True Value QC	500	500
% Recovery	98.8	111
Relative Percent Difference	0.6	5.6

METHODS: TPH GRO & DRO: EPA SW-846 8015 M


Chemist


Date

H17089 T SUGS

PLEASE NOTE: Liability and Damages. Cardinal's liability and client's exclusive remedy for any claim arising, whether based in contract or tort, shall be limited to the amount paid by client for analyses. All claims, including those for negligence and any other cause whatsoever shall be deemed waived unless made in writing and received by Cardinal within thirty (30) days after completion of the applicable service. In no event shall Cardinal be liable for incidental or consequential damages, including, without limitation, business interruptions, loss of use, or loss of profits incurred by client, its subsidiaries, affiliates or successors arising out of or related to the performance of services hereunder by Cardinal, regardless of whether such claim is based upon any of the above-stated reasons or otherwise. Results relate only to the samples identified above. This report shall not be reproduced except in full with written approval of Cardinal Laboratories.



PHONE (575) 393-2326 • 101 E. MARLAND • HOBBS, NM 88240

ANALYTICAL RESULTS FOR
SOUTHERN UNION GAS SERVICES
ATTN: TONY SAVOIE
P.O. BOX 1226
JAL, NM 88252

Receiving Date: 03/19/09
Reporting Date: 03/23/09
Project Number: 2009-010
Project Name: A-7
Project Location: BETTIS

Sampling Date: 03/19/09
Sample Type: SOIL
Sample Condition: INTACT
Sample Received By: ML
Analyzed By: AB

TCLP

LAB NUMBER	SAMPLE ID	GRO	DRO
		(C ₆ -C ₁₀) (mg/L)	(>C ₁₀ -C ₂₈) (mg/L)

ANALYSIS DATE	03/20/09	03/20/09
H17089-1 BOTTOM HOLE 28'	4.78	3.19
Quality Control	494	556
True Value QC	500	500
% Recovery	98.8	111
Relative Percent Difference	0.2	0.8

METHODS: TPH GRO & DRO: EPA SW-846 1311/8015 M

Chemist

Date

H17089 TCLP T SUGS

PLEASE NOTE: Liability and Damages. Cardinal's liability and client's exclusive remedy for any claim arising, whether based in contract or tort, shall be limited to the amount paid by client for analyses. All claims, including those for negligence and any other cause whatsoever shall be deemed waived unless made in writing and received by Cardinal within thirty (30) days after completion of the applicable service. In no event shall Cardinal be liable for incidental or consequential damages, including, without limitation, business interruptions, loss of use, or loss of profits incurred by client, its subsidiaries, affiliates or successors arising out of or related to the performance of services hereunder by Cardinal, regardless of whether such claim is based upon any of the above-stated reasons or otherwise. Results relate only to the samples identified above. This report shall not be reproduced except in full with written approval of Cardinal Laboratories.



PHONE (575) 393-2326 • 101 E. MARLAND • HOBBS, NM 88240

ANALYTICAL RESULTS FOR
SOUTHERN UNION GAS SERVICES
ATTN: TONY SAVOIE
P.O. BOX 1226
JAL, NM 88252

Receiving Date: 03/19/09
Reporting Date: 03/23/09
Project Number: 2009-010
Project Name: A-7
Project Location: BETTIS

Sampling Date: 03/19/09
Sample Type: SOIL
Sample Condition: INTACT
Sample Received By: ML
Analyzed By: AB

LAB NUMBI SAMPLE ID	BENZENE		ETHYL TOTAL	
	(mg/kg)	(mg/kg)	BENZENE	XYLENES
ANALYSIS DATE	03/20/09	03/20/09	03/20/09	03/20/09
H17089-1 BOTTOM HOLE 28'	1.52	14.4	15.8	45.5
Quality Control	0.049	0.050	0.049	0.149
True Value QC	0.050	0.050	0.050	0.150
% Recovery	98.0	100	98.0	99.3
Relative Percent Difference	1.8	3.4	3.4	4.6

METHOD: EPA SW-846 8021B

TEXAS NELAP CERTIFICATION T104704398-08-TX FOR BENZENE, TOLUENE, ETHYL BENZENE,
AND TOTAL XYLENES.

Chemist

Date

PLEASE NOTE: Liability and Damages. Cardinal's liability and client's exclusive remedy for any claim arising, whether based in contract or tort, shall be limited to the amount paid by client for analyses. All claims, including consequential damages and any other cause whatsoever shall be deemed waived unless made in writing and received by Cardinal within thirty (30) days after completion of the applicable service. In no event shall Cardinal be liable for incidental or consequential damages, including, without limitation, business interruptions, loss of use, or loss of profits incurred by client, its subsidiaries, affiliates or successors arising out of or related to the performance of services hereunder by Cardinal, regardless of whether such claim is based upon any of the above-stated reasons or otherwise. Results relate only to the samples identified above. This report shall not be reproduced except in full with written approval of Cardinal Laboratories.



(505) 393-2326 FAX (505) 393-2476

[illegible]

PLEASE NOTE: Liability and Damages. Cardinal's liability and client's exclusive remedy for any claim arising whether based in contract or tort, shall be limited to the amount paid by the client for the analyses. All claims, including those for negligence and any other cause whatsoever shall be deemed waived unless made in writing and received by Cardinal within 30 days after completion of the applicable service. In no event shall Cardinal be liable for incidental or consequential damages, including without limitation, business interruption, loss of use, or loss of profits incurred by client, its subsidiaries, affiliates or successors arising out of or related to the performance of services hereunder by Cardinal, regardless of whether such claim is based upon any of the above stated reasons or otherwise.

Relinquished By: <u>Gary Cay</u>		Date: <u>0900</u>		Received By:		Phone Result: <input type="checkbox"/> Yes <input type="checkbox"/> No		Add'l Phone #:	
Relinquished By:		Date: <u>3-14-09</u>		Received By: <u>Misty LeBart</u>		Fax Result: <input type="checkbox"/> Yes <input type="checkbox"/> No		Add'l Fax #:	
Delivered By: (Circle One) Sampler - UPS - Bus - Other:		Sample Condition Cool <input type="checkbox"/> Yes <input type="checkbox"/> No Intact <input type="checkbox"/> Yes <input type="checkbox"/> No		CHECKED BY: (Initials) <u>[Signature]</u>		REMARKS: <u>E MAIL Results</u> <u>RUSH!!</u>			

† Cardinal cannot accept verbal changes. Please fax written changes to 505-393-2476



ANALYTICAL RESULTS FOR
SOUTHERN UNION GAS SERVICES
ATTN: TONY SAVOIE
P.O. BOX 1226
JAL, NM 88252

Sampling Date: 03/24/09
Sample Type: SOIL
Sample Condition: INTACT
Sample Received By: ML
Analyzed By: AB

ANALYSIS DATE		03/25/09	03/25/09
H17110-1	BOTTOM HOLE 37FT	1,670	4,450
H17110-2	BOTTOM HOLE 39FT	1,790	3,840
Quality Control		402	440
True Value QC		500	500
% Recovery		80.4	88.0
Relative Percent Difference		3.2	18.2

Chemist

03/26/09
Date

PLEASE NOTE: Liability and Damages. Cardinal's liability and client's exclusive remedy for any claim arising, whether based in contract or tort, shall be limited to the amount paid by client for analyses. All claims, including those for negligence and any other cause whatsoever shall be deemed waived unless made in writing and received by Cardinal within thirty (30) days after completion of the applicable service. In no event shall Cardinal be liable for incidental or consequential damages, including, without limitation, business interruptions, loss of use, or loss of profits incurred by client, its subsidiaries, affiliates or successors arising out of or related to the performance of services hereunder by Cardinal, regardless of whether such claim is based upon any of the above-stated reasons or otherwise. Results relate only to the samples identified above. This report shall not be reproduced except in full with written approval of Cardinal Laboratories.



PHONE (575) 393-2326 • 101 E. MARLAND • HOBBS, NM 88240

ANALYTICAL RESULTS FOR
SOUTHERN UNION GAS SERVICES
ATTN: TONY SAVOIE
P.O. BOX 1226
JAL, NM 88252

Receiving Date: 03/24/09
Reporting Date: 03/26/09
Project Number: 2009-010
Project Name: A-7 10" NORTH SIDE
Project Location: NORTH OF EUNICE, NM

Sampling Date: 03/24/09
Sample Type: SOIL
Sample Condition: INTACT
Sample Received By: ML
Analyzed By: ZL

LAB NUMBI SAMPLE ID	BENZENE (mg/kg)	TOLUENE (mg/kg)	ETHYL BENZENE (mg/kg)	TOTAL XYLENES (mg/kg)
ANALYSIS DATE	03/25/09	03/25/09	03/25/09	03/25/09
H17110-2 BOTTOM HOLE 39FT	1.04	23.2	23.3	65.8
Quality Control	0.049	0.050	0.048	0.147
True Value QC	0.050	0.050	0.050	0.150
% Recovery	98.0	100	96.0	98.0
Relative Percent Difference	<1.0	1.4	1.5	3.4

METHOD: EPA SW-846 8021B

TEXAS NELAP ACCREDITATION T104704398-08-TX FOR BENZENE, TOLUENE, ETHYL BENZENE,
AND TOTAL XYLENES.


Chemist


Date

PLEASE NOTE: Liability and Damages. Cardinal's liability and client's exclusive remedy for any claim arising, whether based in contract or tort, shall be limited to the amount paid by client for analyses. All claims, whether in contract or tort, shall be deemed waived unless made in writing and received by Cardinal within thirty (30) days after completion of the applicable service. In no event shall Cardinal be liable for incidental or consequential damages, including, without limitation, business interruptions, loss of use, or loss of profits incurred by client, its subsidiaries, affiliates or successors arising out of or related to the performance of services hereunder by Cardinal, regardless of whether such claim is based upon any of the above-stated reasons or otherwise. Results relate only to the samples identified above. This report shall not be reproduced except in full with written approval of Cardinal Laboratories.



(505) 393-2326 FAX (505) 393-2476

CHAIN-OF-CUSTODY AND ANALYSIS REQUEST

1417110-1
.2

PLEASE NOTE: Liability and Damages. Cardinal's liability and client's exclusive remedy for any claim arising whether based in contract or tort, shall be limited to the amount paid by the client for the analyses. All claims, including those for negligence and any other cause whatsoever shall be deemed waived unless made in writing and received by Cardinal within 30 days after completion of the applicable service. In no event shall Cardinal be liable for incidental or consequential damages, including without limitation, business interruptions, loss of use, or loss of profits incurred by client, its subsidiaries, affiliates or successors arising out of or related to the performance of services hereunder by Cardinal, regardless of whether such claim is based upon any of the above stated reasons or otherwise.

Relinquished By: <i>Gary Coy</i> Date: <i>3-24-09</i> Time: <i>0230</i>		Received By: <i>Must. LaBont</i> Date: _____ Time: _____		Phone Result: <input type="checkbox"/> Yes <input type="checkbox"/> No Fax Result: <input type="checkbox"/> Yes <input type="checkbox"/> No Add'l Phone #: _____ Add'l Fax #: _____ REMARKS: <i>E MAIL Results</i>	
Relinquished By: _____ Date: _____ Time: _____		Received By: _____ Date: _____ Time: _____			
Delivered By: (Circle One) Sampler - UPS - Bus - Other: _____		Sample Condition Cool Intact <input type="checkbox"/> Yes <input checked="" type="checkbox"/> No <input checked="" type="checkbox"/> Yes <input type="checkbox"/> No		CHECKED BY: (Initials) <i>MSB</i>	

† Cardinal cannot accept verbal changes. Please fax written changes to 505-393-2476



PHONE (575) 393-2326 • 101 E. MARLAND • HOBBS, NM 88240

ANALYTICAL RESULTS FOR
SOUTHERN UNION GAS SERVICES
ATTN: TONY SAVOIE
P.O. BOX 1226
JAL, NM 88252

Receiving Date: 03/24/09
Reporting Date: 03/30/09
Project Number: 2009-010
Project Name: A-7 10" NORTH SIDE
Project Location: NORTH OF EUNICE, NM

Sampling Date: 03/24/09
Sample Type: SOIL
Sample Condition: INTACT
Sample Received By: ML
Analyzed By: AB

LAB NUMBER	SAMPLE ID	TCLP	
		GRO (C ₆ -C ₁₀) (mg/L)	DRO (>C ₁₀ -C ₂₈) (mg/L)

ANALYSIS DATE	03/28/09	03/28/09
H17110-2 BOTTOM HOLE 39 FT	3.96	3.98
Quality Control	439	462
True Value QC	500	500
% Recovery	87.8	92.4
Relative Percent Difference	1.9	8.6

METHODS: TPH GRO & DRO: EPA SW-846 1311/8015 M


Chemist


Date

H17110 TCLP T SUGS

PLEASE NOTE: Liability and Damages. Cardinal's liability and client's exclusive remedy for any claim arising, whether based in contract or tort, shall be limited to the amount paid by client for analyses. All claims, including those for negligence and any other cause whatsoever shall be deemed waived unless made in writing and received by Cardinal within thirty (30) days after completion of the applicable service. In no event shall Cardinal be liable for incidental or consequential damages, including, without limitation, business interruptions, loss of use, or loss of profits incurred by client, its subsidiaries, affiliates or successors arising out of or related to the performance of services hereunder by Cardinal, regardless of whether such claim is based upon any of the above-stated reasons or otherwise. Results relate only to the samples identified above. This report shall not be reproduced except in full with written approval of Cardinal Laboratories.



ARDINAL LABORATORIES

PHONE (575) 393-2326 • 101 E. MARLAND • HOBBS, NM 88240

ANALYTICAL RESULTS FOR
SOUTHERN UNION GAS SERVICES
ATTN: TONY SAVOIE
P.O. BOX 1226
JAL, NM 88252

Receiving Date: 03/24/09
Reporting Date: 03/26/09
Project Number: 2009-010
Project Name: A-7 10" NORTH SIDE
Project Location: NORTH OF EUNICE, NM

Sampling Date: 03/24/09
Sample Type: SOIL
Sample Condition: INTACT
Sample Received By: ML
Analyzed By: AB

LAB NUMBER	SAMPLE ID	GRO	DRO
		(C ₆ -C ₁₀) (mg/kg)	(>C ₁₀ -C ₂₈) (mg/kg)

ANALYSIS DATE		03/25/09	03/25/09
H17110-1	BOTTOM HOLE 37FT	1,670	4,450
H17110-2	BOTTOM HOLE 39FT	1,790	3,840
Quality Control		402	440
True Value QC		500	500
% Recovery		80.4	88.0
Relative Percent Difference		3.2	18.2

METHODS: TPH GRO & DRO: EPA SW-846 8015 M

Cathy S. Kene
Chemist

03/26/09
Date

H17110 T SUGS

PLEASE NOTE: Liability and Damages. Cardinal's liability and client's exclusive remedy for any claim arising, whether based in contract or tort, shall be limited to the amount paid by client for analyses. All claims, including those for negligence and any other cause whatsoever shall be deemed waived unless made in writing and received by Cardinal within thirty (30) days after completion of the applicable service. In no event shall Cardinal be liable for incidental or consequential damages, including, without limitation, business interruptions, loss of use, or loss of profits incurred by client, its subsidiaries, affiliates or successors arising out of or related to the performance of services hereunder by Cardinal, regardless of whether such claim is based upon any of the above-stated reasons or otherwise. Results relate only to the samples identified above. This report shall not be reproduced except in full with written approval of Cardinal Laboratories.



PHONE (575) 393-2326 • 101 E. MARLAND • HOBBS, NM 88240

ANALYTICAL RESULTS FOR
SOUTHERN UNION GAS SERVICES
ATTN: TONY SAVOIE
P.O. BOX 1226
JAL, NM 88252

Receiving Date: 03/24/09
Reporting Date: 03/26/09
Project Number: 2009-010
Project Name: A-7 10" NORTH SIDE
Project Location: NORTH OF EUNICE, NM

Sampling Date: 03/24/09
Sample Type: SOIL
Sample Condition: INTACT
Sample Received By: ML
Analyzed By: ZL

LAB NUMBI SAMPLE ID	BENZENE		ETHYL	TOTAL
	(mg/kg)	TOLUENE (mg/kg)	BENZENE (mg/kg)	XYLENES (mg/kg)
ANALYSIS DATE	03/25/09	03/25/09	03/25/09	03/25/09
H17110-2 BOTTOM HOLE 39FT	1.04	23.2	23.3	65.8
Quality Control	0.049	0.050	0.048	0.147
True Value QC	0.050	0.050	0.050	0.150
% Recovery	98.0	100	96.0	98.0
Relative Percent Difference	<1.0	1.4	1.5	3.4

METHOD: EPA SW-846 8021B

TEXAS NELAP ACCREDITATION T104704398-08-TX FOR BENZENE, TOLUENE, ETHYL BENZENE,
AND TOTAL XYLENES.


Chemist


Date

PLEASE NOTE: Liability and Damages. Cardinal's liability and client's exclusive remedy for any claim arising, whether based in contract or tort, shall be limited to the amount paid by client for analyses. All claims, including those for negligence and any other cause whatsoever shall be deemed waived unless made in writing and received by Cardinal within thirty (30) days after completion of the applicable service. In no event shall Cardinal be liable for incidental or consequential damages, including, without limitation, business interruptions, loss of use, or loss of profits incurred by client, its subsidiaries, affiliates or successors arising out of or related to the performance of services hereunder by Cardinal, regardless of whether such claim is based upon any of the above-stated reasons or otherwise. Results relate only to the samples identified above. This report shall not be reproduced except in full with written approval of Cardinal Laboratories.



3/26/09



PHONE (575) 393-2326 • 101 E. MARLAND • HOBBS, NM 88240

ANALYTICAL RESULTS FOR
SOUTHERN UNION GAS SERVICES
ATTN: TONY SAVOIE
P.O. BOX 1226
JAL, NM 88252

Receiving Date: 03/31/09
Reporting Date: 04/01/09
Project Number: 2009-010
Project Name: A-7 10" NORTH SITE
Project Location: NORTH OF EUNICE, NM

Sampling Date: 03/31/09
Sample Type: SOIL
Sample Condition: INTACT
Sample Received By: ML
Analyzed By: AB/ZL

LAB NO.	SAMPLE ID	GRO (C ₆ -C ₁₀) (mg/kg)	DRO (>C ₁₀ -C ₂₈) (mg/kg)	BENZENE (mg/kg)	TOLUENE (mg/kg)	ETHYL BENZENE (mg/kg)	TOTAL XYLENES (mg/kg)
---------	-----------	------------------------------------------------------	--------------------------------------------------------	--------------------	--------------------	--------------------------	-----------------------------

ANALYSIS DATE:	03/31/09	03/31/09	04/01/09	04/01/09	04/01/09	04/01/09
H17156-1 BOTTOM	1,790	3,450	0.962	9.56	16.0	45.6
H17156-2 WEST BANK N	1,920	2,980	0.585	9.98	14.0	43.0
H17156-3 WEST BANK S	762	2,110	0.250	0.071	6.74	13.2
H17156-4 EAST BANK S	<10.0	39.6	<0.050	<0.050	<0.050	<0.300
H17156-5 NORTH BANK	1,680	4,250	0.421	10.6	16.4	49.9
Quality Control	543	564	0.052	0.052	0.05	0.150
True Value QC	500	500	0.050	0.050	0.050	0.150
% Recovery	109	113	104	104	100	100
Relative Percent Difference	12.4	8.9	1.6	1.4	2.0	2.0

METHODS: TPH GRO & DRO - EPA SW-846 8015 M; BTEX - SW-846 8021B.

TEXAS NELAP ACCREDITATION T104704398-08-TX FOR BENZENE, TOLUENE, ETHYL BENZENE,
AND TOTAL XYLENES.


Lab Director


Date

H17156 BTEX8015 SUGS

PLEASE NOTE: Liability and Damages. Cardinal's liability and client's exclusive remedy for any claim arising, whether based in contract or tort, shall be limited to the amount paid by client for analyses. All claims, including those for negligence and any other cause whatsoever shall be deemed waived unless made in writing and received by Cardinal within thirty (30) days after completion of the applicable service. In no event shall Cardinal be liable for incidental or consequential damages, including, without limitation, business interruptions, loss of use, or loss of profits incurred by client, its subsidiaries, affiliates or successors arising out of or related to the performance of services hereunder by Cardinal, regardless of whether such claim is based upon any of the above-stated reasons or otherwise. Results relate only to the samples identified above. This report shall not be reproduced except in full with written approval of Cardinal Laboratories.



ARDINAL LABORATORIES

101 East Marland, Hobbs, NM 88240

(575) 393-2326 Fax (575) 393-2476

Page ____ of ____

Company Name: Southern Union Project Manager: Tony SAVIOE Address: City: EUNICE State: NM Zip: 88231 Phone #: Fax #: Project #: 2009-010 Project Owner: Project Name: A-7 10" North Site Project Location: North of Eunice Sampler Name: Gary Coy				BILL TO P.O. #: Company: Attn: Address: City: State: Zip: Phone #: Fax #:				ANALYSIS REQUEST																		
FOR LAB USE ONLY						MATRIX		PRESERV.		SAMPLING																
Lab I.D.	Sample I.D.	(G)RAB OR (C)OMP.	# CONTAINERS	GROUNDWATER	WASTEWATER	SOIL	OIL	SLUDGE	OTHER:	ACID/BASE	ICE / COOL	OTHER:	DATE	TIME												
Bottom	H17156-1					✓							3-31-09	0830	B.Tex 8015 m											
West Bank N	-2					✓							✓	✓	✓											
West Banks	-3					✓							✓	✓	✓											
EAST BANK S	-4					✓							✓	✓	✓											
North Bank	-5					✓							✓	✓	✓											

PLEASE NOTE: Liability and Damages. Cardinal's liability and client's exclusive remedy for any claim arising whether based in contract or tort, shall be limited to the amount paid by the client for the analyses. All claims including those for negligence and any other cause whatsoever shall be deemed waived unless made in writing and received by Cardinal within 30 days after completion of the applicable service. In no event shall Cardinal be liable for incidental or consequential damages, including without limitation, business interruptions, loss of use, or loss of profits incurred by client, its subsidiaries, affiliates or successors arising out of or related to the performance of services hereunder by Cardinal, regardless of whether such claim is based upon any of the above stated reasons or otherwise.

Sampler Relinquished: Relinquished By: Gary Coy Date: 3-31-09 Time: 0830 Date: Time:		Received By: Mark E. Burt Received By:		Phone Result: <input type="checkbox"/> No Add'l Phone #: Fax Result: <input type="checkbox"/> No Add'l Fax #: REMARKS: E MAIL Results	
Delivered By: (Circle One) Sampler - UPS - Bus - Other:		Temp. Sample Condition Cool Intact <input type="checkbox"/> Yes <input type="checkbox"/> No		CHECKED BY: (Initials) MCB	

† Cardinal cannot accept verbal changes. Please fax written changes to 575-393-2476.



ARDINAL LABORATORIES

PHONE (575) 393-2326 • 101 E. MARLAND • HOBBS, NM 88240

July 16, 2009

Tony Savoie
Southern Union Gas Services
P.O. Box 1226
Jal, NM 88252

Re: A-7 10" North Site

Enclosed are the results of analyses for sample number H17777, received by the laboratory on 07/10/09 at 10:00 am.

Cardinal Laboratories is accredited through Texas NELAP for:

Method SW-846 8021	Benzene, Toluene, Ethyl Benzene, and Total Xylenes
Method SW-846 8260	Benzene, Toluene, Ethyl Benzene, and Total Xylenes
Method TX 1005	Total Petroleum Hydrocarbons

Certificate number T104704398-08-TX. Accreditation applies to solid and chemical materials and non-potable water matrices.

Total Number of Pages of Report: 4 (includes Chain of Custody)

Sincerely,

Celey D. Keene
Laboratory Director



ARDINAL LABORATORIES

PHONE (575) 393-2326 • 101 E. MARLAND • HOBBS, NM 88240

ANALYTICAL RESULTS FOR
SOUTHERN UNION GAS SERVICES
ATTN: TONY SAVOIE
P.O. BOX 1226
JAL, NM 88252

Receiving Date: 07/10/09
Reporting Date: 07/13/09
Project Number: 2009-010
Project Name: A-7 10" NORTH SITE
Project Location: NORTH OF EUNICE, NM

Sampling Date: 07/09/09 & 07/10/09
Sample Type: SOIL
Sample Condition: COOL & INTACT @ 5°C
Sample Received By: ML
Analyzed By: AB

LAB NUMBER	SAMPLE ID	GRO	DRO
		(C ₆ -C ₁₀) (mg/kg)	(>C ₁₀ -C ₂₈) (mg/kg)
ANALYSIS DATE		07/10/09	07/10/09
H17777-1	BOTTOM HOLE #4 40FT	5,170	9,220
H17777-2	LAST SAMPLE 44FT*	1,620	3,480
Quality Control		598	598
True Value QC		500	500
% Recovery		120	120
Relative Percent Difference		19.6	18.3

METHODS: TPH GRO & DRO: EPA SW-846 8015 M. Reported on wet weight.
Not accredited for GRO/DRO.

*Surrogates outside historical limits due to sample matrix interference.


Chemist


Date

H17777 T SUGS

PLEASE NOTE: **Liability and Damages.** Cardinal's liability and client's exclusive remedy for any claim arising, whether based in contract or tort, shall be limited to the amount paid by client for analyses. All claims, including those for negligence and any other cause whatsoever shall be deemed waived unless made in writing and received by Cardinal within thirty (30) days after completion of the applicable service. In no event shall Cardinal be liable for incidental or consequential damages, including, without limitation, business interruptions, loss of use, or loss of profits incurred by client, its subsidiaries, affiliates or successors arising out of or related to the performance of services hereunder by Cardinal, regardless of whether such claim is based upon any of the above-stated reasons or otherwise. Results relate only to the samples identified above. This report shall not be reproduced except in full with written approval of Cardinal Laboratories.



PHONE (575) 393-2326 • 101 E. MARLAND • HOBBS, NM 88240

ANALYTICAL RESULTS FOR
SOUTHERN UNION GAS SERVICES
ATTN: TONY SAVOIE
P.O. BOX 1226
JAL, NM 88252

Receiving Date: 07/10/09
Reporting Date: 07/15/09
Project Number: 2009-010
Project Name: A-7 10" NORTH SITE
Project Location: NORTH OF EUNICE, NM

Sampling Date: 07/09/09 & 07/10/09
Sample Type: SOIL
Sample Condition: COOL & INTACT @ 5°C
Sample Received By: ML
Analyzed By: ZL

LAB NO.	SAMPLE ID	BENZENE (mg/kg)	TOLUENE (mg/kg)	ETHYL BENZENE (mg/kg)	TOTAL XYLENES (mg/kg)
ANALYSIS DATE:		07/15/09	07/15/09	07/15/09	07/15/09
H17777-1	BOTTOM HOLE #4 40FT	0.453	5.95	5.22	17.6
H17777-2	LAST SAMPLE 44FT*	0.814	9.76	7.52	28.5
Quality Control		0.054	0.052	0.051	0.161
True Value QC		0.050	0.050	0.050	0.150
% Recovery		108	104	102	107
Relative Percent Difference		10.7	7.8	7.0	8.2

METHODS: EPA SW-846 8021B.

TEXAS NELAP ACCREDITATION T104704398-08-TX FOR BENZENE, TOLUENE, ETHYL BENZENE,
AND TOTAL XYLENES.

Reported on wet weight.

*Surrogate outside historical limits due to sample matrix interference.


Lab Director


Date

H17777 BTEX SUGS

PLEASE NOTE: **Liability and Damages.** Cardinal's liability and client's exclusive remedy for any claim arising, whether based in contract or tort, shall be limited to the amount paid by client for analysis. All claims, including those for negligence and any other cause whatsoever shall be deemed waived unless made in writing and received by Cardinal within thirty (30) days after completion of the applicable service. In no event shall Cardinal be liable for incidental or consequential damages, including, without limitation, business interruptions, loss of use, or loss of profits incurred by client, its subsidiaries, affiliates or successors arising out of or related to the performance of services hereunder by Cardinal, regardless of whether such claim is based upon any of the above-stated reasons or otherwise. Results relate only to the samples identified above. This report shall not be reproduced except in full with written approval of Cardinal Laboratories.



CARDINAL LABORATORIES

101 East Mariand, Hobbs, NM 88240

(575) 393-2326 Fax (575) 393-2476

Page ____ of ____

Company Name: Southern Union Project Manager: TONY SAVIOE Address: City: Eunice State: NM Zip: 88231 Phone #: Project #: 2009-010 Project Owner: Project Name: A-7 10" North Site Project Location: North of Eunice Sampler Name: Gary Coy				BILL TO P.O. #: Company: Attn: Address: City: State: Zip: Phone #: Fax #:				ANALYSIS REQUEST																
FOR LAB USE ONLY		Lab I.D.		Sample I.D.		(G)RAB OR (C)OMP # CONTAINERS GROUNDWATER WASTEWATER SOIL SLUDGE OTHER:	MATRIX ACID/BASE ICE / COOL OTHER:	PRESERV. DATE TIME	SAMPLING DATE TIME	B-Tex 8015 M														
Bottom Hole #4		40 FT		H17721																				
Last Sample		44 FT		-2																				

PLEASE NOTE: Liability and Damages. Cardinal's liability and client's exclusive remedy for any claim arising whether based in contract or tort, shall be limited to the amount paid by the client for the analyses. All claims including those for negligence and any other cause whatsoever shall be deemed waived unless made in writing and received by Cardinal within 30 days after completion of the applicable service. In no event shall Cardinal be liable for incidental or consequential damages, including without limitation, business interruptions, loss of use, or loss of profits incurred by client, its subsidiaries, affiliates or successors arising out of or related to the performance of services hereunder by Cardinal, regardless of whether such claim is based upon any of the above stated reasons or otherwise.

Sampler Relinquished: Relinquished By: Gary Coy Date: 7-10-09 Time: 10:00 A	Received By: [Signature] Date: Time:	Phone Result: <input type="checkbox"/> No Add'l Phone #: Fax Result: <input type="checkbox"/> No Add'l Fax #: REMARKS: E-MAIL Results to Tony
Delivered By: (Circle One) Sampler - UPS - Bus - Other:	Temp. 59 Sample Condition Cool Intact <input type="checkbox"/> Yes <input type="checkbox"/> Yes <input type="checkbox"/> No <input type="checkbox"/> No	CHECKED BY: (Initials) [Signature]

† Cardinal cannot accept verbal changes. Please fax written changes to 575-393-2476.

#26

Appendix C
Release Notification &
Corrective Action (Form C-141)

District I
1625 N French Dr., Hobbs, NM 88240
District II
1301 W. Grand Avenue, Artesia, NM 88210
District III
1000 Rio Brazos Road, Aztec, NM 87410
District IV
1220 S. St Francis Dr., Santa Fe, NM 87505

State of New Mexico
Energy Minerals and Natural Resources

Oil Conservation Division
1220 South St. Francis Dr.

Santa Fe, NM 87505 2009-010

Form C-141
Revised October 10, 2003

Submit 2 Copies to appropriate
District Office in accordance
with Rule 116 on back
side of form

Release Notification and Corrective Action

OPERATOR

☒ Initial Report ☐ Final Report

Name of Company	Southern Union Gas Services, Ltd.	Contact	Tony Savoie
Address	P.O. Box 1226 Jal, N.M. 88252	Telephone No.	505-395-2116
Facility Name	Lea County Field Dept.	Facility Type	Natural Gas Gathering

Surface Owner: Charlie Bettis	Mineral Owner: Fee	Lease No.
-------------------------------	--------------------	-----------

LOCATION OF RELEASE

Unit Letter	Section	Township	Range	Feet from the	North/South Line	Feet from the	East/West Line	County
L	14	21S	37E					Lea

Latitude N32 28.522 Longitude W103 8.529

NATURE OF RELEASE

Type of Release : Crude Oil, Produced water, and Natural Gas	Volume of Release: 200 Bbls Fluid and 81 MCF Nat. Gas	Volume Recovered : 130 Bbls
Source of Release : 10" Natural Gas Pipeline	Date and Hour of Occurrence not known	Date and Hour of Discovery 8/22/07 Time: 2:00 p.m.
Was Immediate Notice Given? <input checked="" type="checkbox"/> Yes <input type="checkbox"/> No <input type="checkbox"/> Not Required	If YES, To Whom? Gary Wink On-call NMOCD	
By Whom? Tony Savoie	Date and Hour: 8/22/07 2:56 p.m.	
Was a Watercourse Reached? <input type="checkbox"/> Yes <input checked="" type="checkbox"/> No	If YES, Volume Impacting the Watercourse.	

If a Watercourse was Impacted, Describe Fully.*

Describe Cause of Problem and Remedial Action Taken.*

A 10" Natural Gas gathering line operating at approximately 30 p.s.i. developed a leak. Repair crews arrived at the leak site with a vacuum truck and started picking up fluid "mostly rain and produced water." The leak area was excavated and the 10" natural gas line was temporarily repaired with a leak clamp. The landowner was notified and questioned about livestock in the area.

Describe Area Affected and Cleanup Action Taken. Approximately 26,250 sq.ft. of pasture land was affected by the leak and temporary repair. Final remediation will follow the NMOCD recommended guidelines for leaks and spills. Due to recent heavy rains in the area it was estimated that most of the water picked up was rain water with a slight oily sheen. Approximately 130 Bbls of fluid was removed from the depression in order to remove all of the oily sheen.

I hereby certify that the information given above is true and complete to the best of my knowledge and understand that pursuant to NMOCD rules and regulations all operators are required to report and/or file certain release notifications and perform corrective actions for releases which may endanger public health or the environment. The acceptance of a C-141 report by the NMOCD marked as "Final Report" does not relieve the operator of liability should their operations have failed to adequately investigate and remediate contamination that pose a threat to ground water, surface water, human health or the environment. In addition, NMOCD acceptance of a C-141 report does not relieve the operator of responsibility for compliance with any other federal, state, or local laws and/or regulations.

Signature: <u>Tony Savoie</u>	OIL CONSERVATION DIVISION	
Printed Name: John A. Savoie	Approved by District Supervisor <u>Johnson</u>	
Title: Remediation Supervisor	ENVIRONMENTAL ENGINEER	
E-mail Address: tony.savoie@sug.com	Approval Date: 3.24.09	Expiration Date: 5.24.09
Date: 8/28/07 Phone: 505-395-2116	Conditions of Approval:	Attached <input type="checkbox"/> 1804.5.2186

* Attach Additional Sheets If Necessary

FGRL0914237975

District I
1625 N. French Dr., Hobbs, NM 88240
District II
1301 W. Grand Avenue, Artesia, NM 88210
District III
1000 Rio Brazos Road, Aztec, NM 87410
District IV
1220 S. St. Francis Dr., Santa Fe, NM 87505

State of New Mexico
Energy Minerals and Natural Resources

Oil Conservation Division
1220 South St. Francis Dr.
Santa Fe, NM 87505

Form C-141
Revised October 10, 2003

Submit 2 Copies to appropriate
District Office in accordance
with Rule 116 on back
side of form

Release Notification and Corrective Action

OPERATOR

☒ Initial Report ☐ Final Report

Name of Company	Southern Union Gas Services, Ltd.	Contact	Tony Savoie
Address	P.O. Box 1226 Jal, N.M. 88252	Telephone No.	505-395-2116
Facility Name	Lea County Field Dept.	Facility Type	Natural Gas Gathering

Surface Owner: Charlie Bettis	Mineral Owner: Fee	Lease No.
-------------------------------	--------------------	-----------

LOCATION OF RELEASE

Unit Letter L	Section 14	Township 21S	Range 37E	Feet from the	North/South Line	Feet from the	East/West Line	County Lea
------------------	---------------	-----------------	--------------	---------------	------------------	---------------	----------------	---------------

Latitude N32 28.522 Longitude W103 8.529

NATURE OF RELEASE

Type of Release : Crude Oil, Produced water, and Natural Gas	Volume of Release: 200 Bbls Fluid and 81 MCF Nat. Gas	Volume Recovered 130 Bbls
Source of Release : 10" Natural Gas Pipeline	Date and Hour of Occurrence not known	Date and Hour of Discovery 8/22/07 Time: 2:00 p.m.
Was Immediate Notice Given? <input checked="" type="checkbox"/> Yes <input type="checkbox"/> No <input type="checkbox"/> Not Required	If YES, To Whom? Gary Wink On-call NMOCD	
By Whom? Tony Savoie	Date and Hour: 8/22/07 2:56 p.m.	
Was a Watercourse Reached? <input type="checkbox"/> Yes <input checked="" type="checkbox"/> No	If YES, Volume Impacting the Watercourse	

If a Watercourse was Impacted, Describe Fully.*

Describe Cause of Problem and Remedial Action Taken.*

A 10" Natural Gas gathering line operating at approximately 30 p.s.i. developed a leak. Repair crews arrived at the leak site with a vacuum truck and started picking up fluid "mostly rain and produced water." The leak area was excavated and the 10" natural gas line was temporarily repaired with a leak clamp. The landowner was notified and questioned about livestock in the area.

Describe Area Affected and Cleanup Action Taken. Approximately 26,250 sq.ft. of pasture land was affected by the leak and temporary repair. Final remediation will follow the NMOCD recommended guidelines for leaks and spills. Due to recent heavy rains in the area it was estimated that most of the water picked up was rain water with a slight oily sheen. Approximately 130 Bbls of fluid was removed from the depression in order to remove all of the oily sheen.

I hereby certify that the information given above is true and complete to the best of my knowledge and understand that pursuant to NMOCD rules and regulations all operators are required to report and/or file certain release notifications and perform corrective actions for releases which may endanger public health or the environment. The acceptance of a C-141 report by the NMOCD marked as "Final Report" does not relieve the operator of liability should their operations have failed to adequately investigate and remediate contamination that pose a threat to ground water, surface water, human health or the environment. In addition, NMOCD acceptance of a C-141 report does not relieve the operator of responsibility for compliance with any other federal, state, or local laws and/or regulations.

Signature: <i>Tony Savoie</i>	OIL CONSERVATION DIVISION	
Printed Name: John A. Savoie	Approved by District Supervisor: ENVIRONMENTAL ENGINEER	
Title: Remediation Supervisor	Approval Date: 8.31.07	Expiration Date: 10.1.07
E-mail Address: tony.savoie@sug.com	Conditions of Approval:	Attached <input type="checkbox"/>
Date: 8/28/07 Phone: 505-395-2116	SUBMIT V/H DELINEATION	

* Attach Additional Sheets If Necessary

W/ CLOSURE C-141

RP#1540