

DATE IN 4/13/2017	SUSPENSE	ENGINEER MAM	LOGGED IN 4/13/2017	TYPE CTB	APP NO. RAM 4701358796
----------------------	----------	-----------------	------------------------	-------------	---------------------------

ABOVE THIS LINE FOR DIVISION USE ONLY

NEW MEXICO OIL CONSERVATION DIVISION
- Engineering Bureau -
1220 South St. Francis Drive, Santa Fe, NM 87505



ADMINISTRATIVE APPLICATION CHECKLIST

THIS CHECKLIST IS MANDATORY FOR ALL ADMINISTRATIVE APPLICATIONS FOR EXCEPTIONS TO DIVISION RULES AND REGULATIONS WHICH REQUIRE PROCESSING AT THE DIVISION LEVEL IN SANTA FE

Application Acronyms:

[NSL-Non-Standard Location] [NSP-Non-Standard Proration Unit] [SD-Simultaneous Dedication]
[DHC-Downhole Commingling] [CTB-Lease Commingling] [PLC-Pool/Lease Commingling]
[PC-Pool Commingling] [OLS - Off-Lease Storage] [OLM-Off-Lease Measurement]
[WFX-Waterflood Expansion] [PMX-Pressure Maintenance Expansion]
[SWD-Salt Water Disposal] [IPI-Injection Pressure Increase]
[EOR-Qualified Enhanced Oil Recovery Certification] [PPR-Positive Production Response]

[1] **TYPE OF APPLICATION** - Check Those Which Apply for [A]

[A] Location - Spacing Unit - Simultaneous Dedication
☐ NSL ☐ NSP ☐ SD

Check One Only for [B] or [C]

[B] Commingling - Storage - Measurement
☐ DHC ☒ CTB ☐ PLC ☐ PC ☐ OLS ☐ OLM

[C] Injection - Disposal - Pressure Increase - Enhanced Oil Recovery
☐ WFX ☐ PMX ☐ SWD ☐ IPI ☐ EOR ☐ PPR

[D] Other: Specify _____

[2] **NOTIFICATION REQUIRED TO:** - Check Those Which Apply, or Does Not Apply

[A] ☒ Working, Royalty or Overriding Royalty Interest Owners

[B] ☐ Offset Operators, Leaseholders or Surface Owner

[C] ☐ Application is One Which Requires Published Legal Notice

[D] ☒ Notification and/or Concurrent Approval by BLM or SLO
U.S. Bureau of Land Management - Commissioner of Public Lands, State Land Office

[E] ☒ For all of the above, Proof of Notification or Publication is Attached, and/or,

[F] ☐ Waivers are Attached

[3] **SUBMIT ACCURATE AND COMPLETE INFORMATION REQUIRED TO PROCESS THE TYPE OF APPLICATION INDICATED ABOVE.**

[4] **CERTIFICATION:** I hereby certify that the information submitted with this application for administrative approval is **accurate** and **complete** to the best of my knowledge. I also understand that **no action** will be taken on this application until the required information and notifications are submitted to the Division.

Note: Statement must be completed by an individual with managerial and/or supervisory capacity.

Jordan L. Kessler
Print or Type Name

Jordan L. Kessler
Signature

Title

jlkessler@hollandhart.com

e-mail Address

Date

- CTB 812
- Mator Production Company
22893

Well
- RUSTHER BUCKS
12245275414
30-015-41775
- BUAHoystate.com
132452754224
30-015-43777
Pool
- Purple Sage

WOLFcamp 444
Penn (GAS)
98220
4/13/17

RECEIVED 600
MAY 13 2 30 PM '17



January 13, 2017

VIA HAND DELIVERY

David Catanach
Oil Conservation Division
New Mexico Department of Energy,
Minerals and Natural Resources
1220 South Saint Francis Drive
Santa Fe, New Mexico 87505

Re: Application of Matador Production Company for administrative approval for off-lease measurement and approval to surface commingle (lease commingle) oil and gas production from the spacing units comprised of the S/2 of Section 12 and the N/2 of Section 13, Township 24 South, Range 27 East, NMPM, Eddy County, New Mexico.

Dear Mr. Catanach:

Matador Production Company (OGRID No. 228937) seeks administrative approval for off-lease measurement and approval to surface-lease commingle oil and gas production from the Black River; Wolfcamp, East (Gas) Pool (Pool Code 97442) *from all existing and future wells and existing and future leases* drilled in the following areas of diverse ownership in Township 24 South, Range 27 East, NMPM, in Eddy County, New Mexico:

(a) The 320-acre standard spacing unit comprised of the S/2 of Section 12. This pooled spacing unit is currently dedicated to the Rustler Breaks 12-24-27 No. 1H Well (API No. 30-015-41775). This well produces from the Black River; Wolfcamp, East (Gas) Pool (Pool Code 97442).¹ The spacing unit is subject to Division Order R-13763, which pooled certain uncommitted interest owners for the Rustler Breaks 12-24-27 No. 1H Well.

(b) The 320-acre standard spacing unit comprised of the N/2 of Section 13. This pooled spacing unit is currently dedicated to Brantley State Com 13-24S-27E RB No. 221H Well (API No. 30-015-43774). This well will produce from Black River; Wolfcamp, East (Gas) Pool (Pool Code 97442).² The spacing unit is subject to Division Order R-14229, which pooled certain uncommitted interest owners for the Brantley State Com 13-24S-27E RB No. 221H Well.

¹ Pursuant to Division Order No. R-14262, the pool will change effective February 1, 2017, to the Purple Sage Gas Pool (Pool Code 98220). Spacing and commingling will not be affected.

² Pursuant to Division Order No. R-14262, the pool will change effective February 1, 2017, to the Purple Sage Gas Pool (Pool Code 98220). Spacing and commingling will not be affected.



Pursuant to NMAC 19.15.12.7, approved spacing units with diverse ownership are considered separate leases for surface commingling purposes. Matador seeks authority to surface commingle production according to the provisions of NMAC 19.15.12.10.C *from all existing and future wells* in these separate areas of diverse ownership at a surface facility located in the SE/4 SE/4 (Unit P) of Section 12. Pursuant to 19.15.12.10(C)(4)(g), Matador also seeks authority to commingle production into the DLK Black River South Trunk Line from future leases with notice provided only to interest owners within future leases. Prior to commingling, gas production from each well will be separately metered using individual test separators with calibrated orifice meters that are manufactured to AGA specifications. Oil production from each well will also be separately metered using a turbine meter.

Exhibit 1 is a land plat showing Matador's current development and gathering system in the subject area. The plat identifies the wellbores, the spacing units, and the common surface facility located in the SE/4 SE/4 (Unit P) of Section 12. The acreage is all fee and state lands.

Exhibit 2 is a completed Application for Surface Commingling (Diverse Ownership) and Off-Lease Measurement Form C-107-B. The record ownership and elections are identical in these two leases. However, the wells will be on different payout schedules, necessitating an application with diverse ownership.

Exhibit 3 is an in-depth engineering explanation of Matador's commingling process.

Exhibit 4 is a C-102 for each of the wells, both drilled and planned to be drilled, within the existing spacing units.

Exhibit 5 is a diagram of the surface facilities.

Exhibit 6 is a list of the interests affected by this request for approval to off-lease measure and surface commingle oil and gas production. A copy of this application with all attachments has been sent by certified mail to all affected parties advising them that if they have an objection they must file it in writing with the division within 20 days from the date the division receives Matador's application.

Your attention to this matter is appreciated.

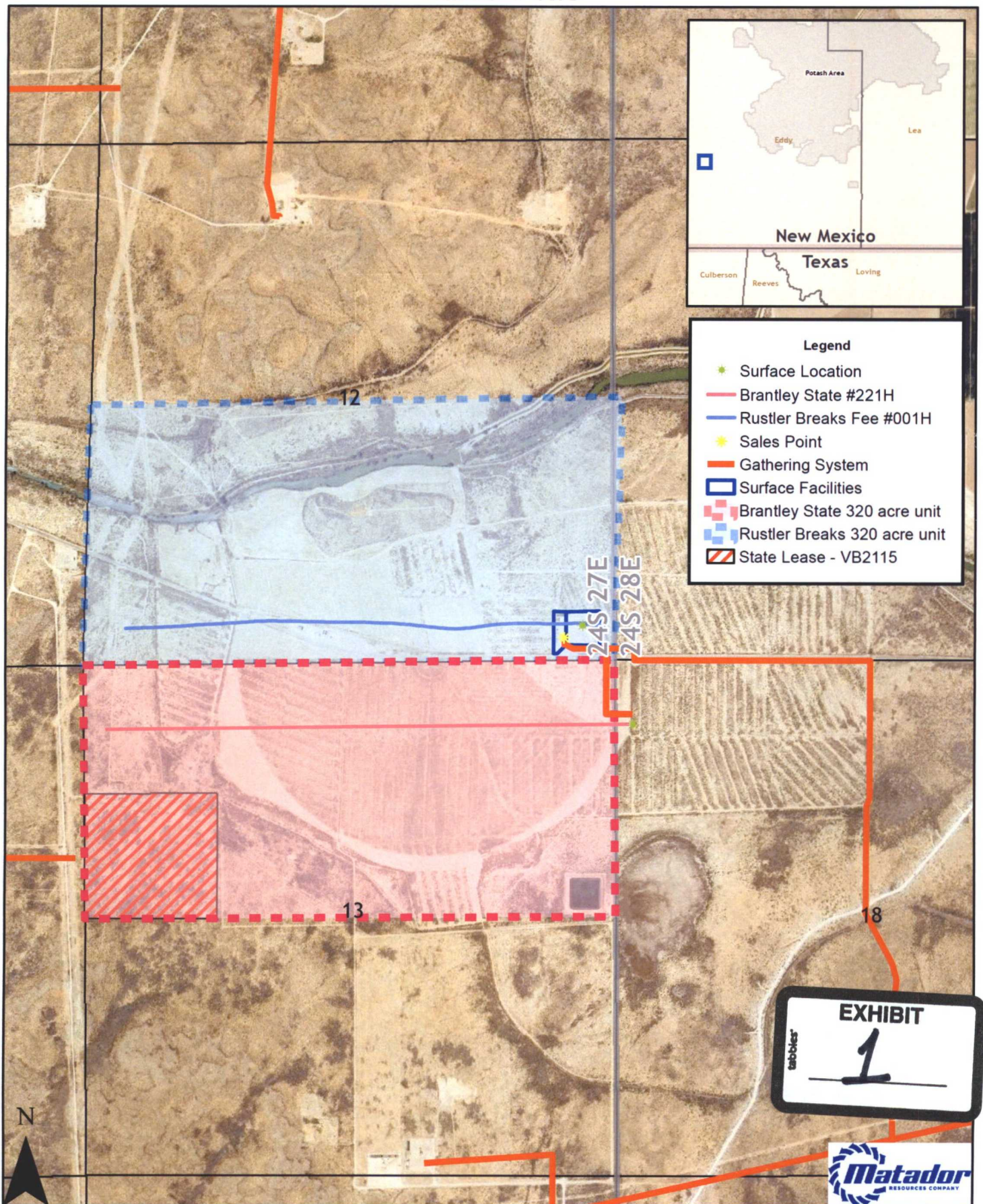
Sincerely,

Jordan L. Kessler

ATTORNEY FOR

MATADOR PRODUCTION COMPANY

Rustler Breaks / Brantley State Land Plat



0 750 1,500 3,000 Feet

Date: January 12, 2017
Filename: BrantleyRustlerBreaks_LandPlat
Projection: NAD27 State Plane New Mexico East FIPS 3001
Sources: IHS; ESRI;

District I
1625 N. French Drive, Hobbs, NM 88240
District II
811 S. First St., Artesia, NM 88210
District III
1000 Rio Brazos Road, Aztec, NM 87410
District IV
1220 S. St Francis Dr, Santa Fe, NM
87505

State of New Mexico
Energy, Minerals and Natural Resources Department

Form C-107-B
Revised August 1, 2011

OIL CONSERVATION DIVISION
1220 S. St Francis Drive
Santa Fe, New Mexico 87505

Submit the original
application to the Santa Fe
office with one copy to the
appropriate District Office.

APPLICATION FOR SURFACE COMMINGLING (DIVERSE OWNERSHIP)

OPERATOR NAME: Matador Production Company

OPERATOR ADDRESS: 5400 LBJ Freeway Tower 1 Suite 1500 Dallas, TX 75240

APPLICATION TYPE:

☐ Pool Commingling ☒ Lease Commingling ☐ Pool and Lease Commingling ☒ Off-Lease Storage and Measurement (Only if not Surface Commingled)

LEASE TYPE: ☒ Fee ☒ State ☐ Federal

Is this an Amendment to existing Order? ☐ Yes ☒ No If "Yes", please include the appropriate Order No. _____

Have the Bureau of Land Management (BLM) and State Land office (SLO) been notified in writing of the proposed commingling
☒ Yes ☐ No

(A) POOL COMMINGLING

Please attach sheets with the following information

(1) Pool Names and Codes	Gravities / BTU of Non-Commingled Production	Calculated Gravities / BTU of Commingled Production		Calculated Value of Commingled Production	Volumes

(2) Are any wells producing at top allowables? ☐ Yes ☐ No

(3) Has all interest owners been notified by certified mail of the proposed commingling? ☐ Yes ☐ No.

(4) Measurement type: ☐ Metering ☐ Other (Specify)

(5) Will commingling decrease the value of production? ☐ Yes ☐ No If "yes", describe why commingling should be approved

(B) LEASE COMMINGLING

Please attach sheets with the following information

(1) Pool Name and Code- Black River Wolfcamp East Code: 97442

(2) Is all production from same source of supply? ☒ Yes ☐ No

(3) Has all interest owners been notified by certified mail of the proposed commingling? ☒ Yes ☐ No

(4) Measurement type: ☒ Metering ☐ Other (Specify)

(C) POOL and LEASE COMMINGLING

Please attach sheets with the following information

(1) Complete Sections A and E.

(D) OFF-LEASE STORAGE and MEASUREMENT

Please attached sheets with the following information

(1) Is all production from same source of supply? ☐ Yes ☐ No

(2) Include proof of notice to all interest owners.

(E) ADDITIONAL INFORMATION (for all application types)

Please attach sheets with the following information

(1) A schematic diagram of facility, including legal location.

(2) A plat with lease boundaries showing all well and facility locations. Include lease numbers if Federal or State lands are involved.

(3) Lease Names, Lease and Well Numbers, and API Numbers.

I hereby certify that the information above is true and complete to the best of my knowledge and belief.

SIGNATURE: 

TITLE: Senior Production Engineer

DATE: 1/12/17

TYPE OR PRINT NAME: John Romano

TELEPHONE NO.: (972) 371-5245

E-MAIL ADDRESS: jromano@matadorresources.com

EXHIBIT

2

Matador Production Company

One Lincoln Centre • 5400 LBJ Freeway • Suite 1500 • Dallas, Texas 75240

Voice 972.371.5245 • Fax 972.371.5201

jromano@matadorresources.com

John L. Romano
Senior Production Engineer

January 4, 2017

New Mexico Oil Conservation Division
1220 South St. Francis Drive
Santa Fe, NM 87505

Re: Application of Matador Production Company for administrative approval for off-lease measurement and approval to surface commingle (lease commingle) gas and oil production from the spacing units comprised of the S/2 of Section 12, the N/2 of Section 13, Township 24 South, Range 27 East, NMPM, Eddy County, New Mexico (the "Lands")

To Whom This May Concern,

Matador Production Company ("Matador"), OGRID: 228937, requests to commingle current oil and gas production from two (2) distinct wells located on the Lands and future production from the Lands as described herein.. Both wells will be metered through a test separator with an oil turbine meter and gas orifice meter. The gas commingling will occur after individual measurement at each well. Gas exiting each well test flows into one gathering lines, as depicted on **Exhibit A**, the DLK Black River South Trunk Line. Each well on the Lands will have its own test separator with an orifice meter manufactured and assembled in accordance with American Gas Association (AGA) specifications. All primary and secondary Electronic Flow Measurement (EFM) equipment is tested and calibrated by a reputable third party measurement company in accordance with industry specifications.

The orifice meter is the preferred measurement device utilized by midstream and E&P companies in the natural gas business. The gas samples are obtained at the time of the meter testing/calibration and the composition and heating value are determined by a laboratory in accordance with American Petroleum Institute (API) specifications to ensure accurate volume and Energy (MMBTU) determinations. See example from Mitchell Analytical Laboratory attached as **Exhibit B** hereto.

The flow stream from each wellhead is demonstrated in the Process Flow Diagram (PFD) attached as **Exhibit A** hereto. The PFD shows that the water, oil, and gas leave the wellbore and flow into a wellhead test separator which separates the oil, gas, and water. The oil is measured via turbine meter which is calibrated periodically by a third party measurement company for accuracy. The gas is measured on a volume and MMBTU basis by an orifice meter and supporting EFM equipment in accordance with American Petroleum Association (API) Chapter 21.1. The gas is then sent into a gathering line where it is commingled with each of the other wells' metered gas.

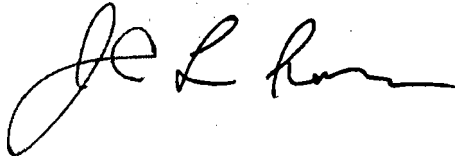


The gathering line gas is then metered by another orifice meter at the tank battery check to show the total volume of gas leaving the Tank Battery. This meter is tested and calibrated in accordance with industry specifications and volume and energy are determined on an hourly, daily, and monthly basis. Once the gas exits this final tank battery sales check it travels directly into a third party sales connect meter. Longwood has its own orifice meter that measures the gas for custody transfer. These meters are also calibrated periodically to ensure the measurement accuracy.

In conclusion, all the oil and gas produced on the Lands is and will be metered at each wellhead and allocated correctly using the same measurement equipment as the pipeline sales measurement specifications accepted by API as industry standard.

Very truly yours,

MATADOR PRODUCTION COMPANY

A handwritten signature in black ink, appearing to read 'J L Romano', written in a cursive style.

John L. Romano
Production Engineer

District I
1625 N. French Dr., Hobbs, NM 88240
Phone: (575) 393-6161 Fax: (575) 393-0720
District II
811 S. First St., Artesia, NM 88210
Phone: (575) 748-1283 Fax: (575) 748-9720
District III
1000 Rio Brazos Road, Aztec, NM 87410
Phone: (505) 334-6178 Fax: (505) 334-6170
District IV
1220 S. St. Francis Dr., Santa Fe, NM 87505
Phone: (505) 476-3460 Fax: (505) 476-3462

State of New Mexico
Energy, Minerals & Natural Resources
Department
OIL CONSERVATION DIVISION
1220 South St. Francis Dr.
Sante Fe, NM 87505

FORM C-102
Revised August 1, 2011
Submit one copy to appropriate
District Office

☐ AMENDED REPORT

WELL LOCATION AND ACREAGE DEDICATION PLAT

¹ API Number 30-015-41775	² Pool Code 977442	³ Pool Name Black River; Wolfcamp E45r (G)
⁴ Property Code 40203	⁵ Property Name RUSTLER BREAKS 12-24-27	⁶ Well Number #1H
⁷ GRID No. 228937	⁸ Operator Name MATADOR PRODUCTION COMPANY	⁹ Elevation 3090'

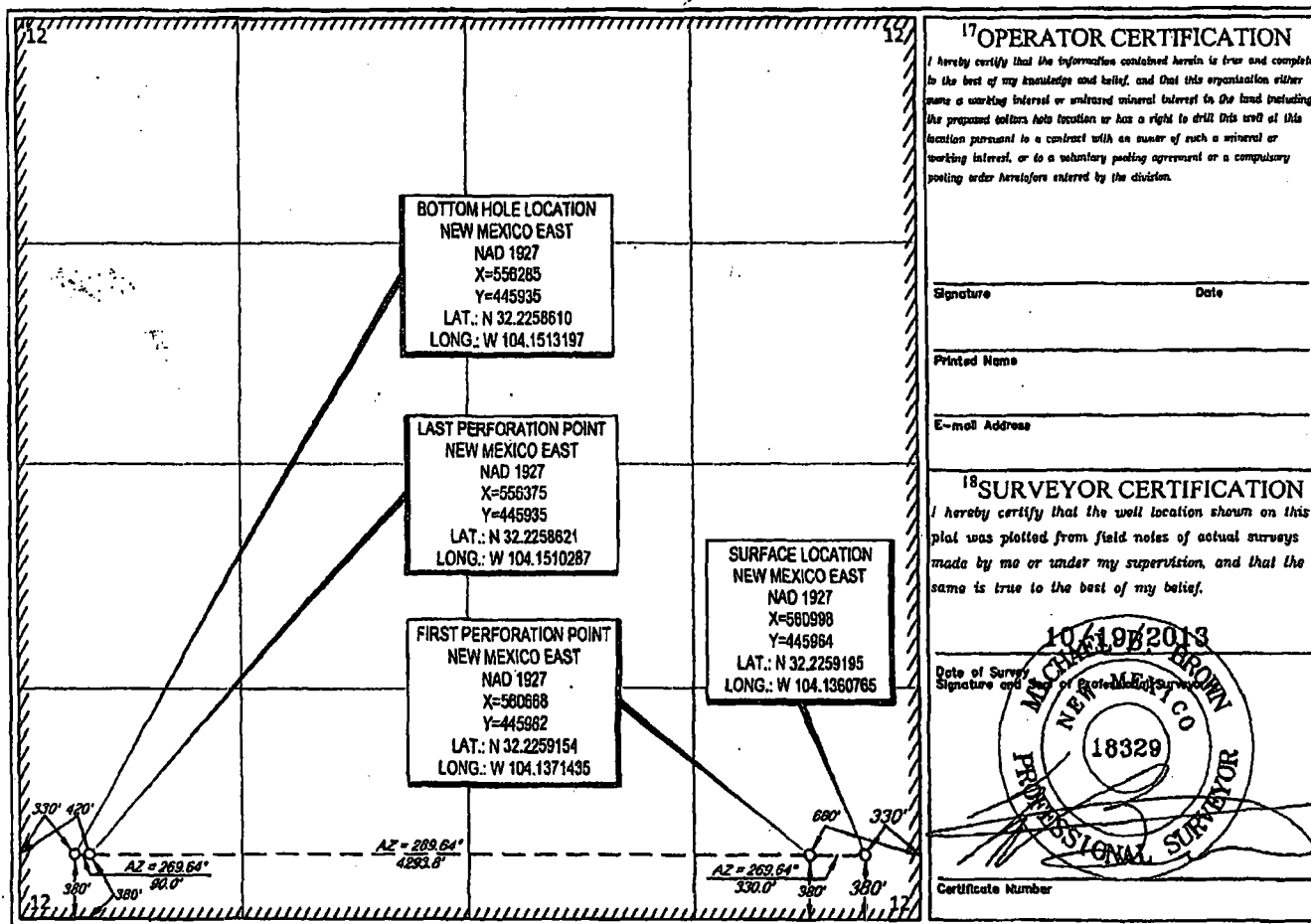
¹⁰Surface Location

UL or lot no.	Section	Township	Range	Lot Idn	Feet from the	North/South line	Feet from the	East/West line	County
P	12	24-S	27-E	-	380'	SOUTH	330'	EAST	EDDY

UL or lot no.	Section	Township	Range	Lot Idn	Feet from the	North/South line	Feet from the	East/West line	County
M	12	24-S	27-E	-	380'	SOUTH	330'	WEST	EDDY

¹¹ Dedicated Acres	¹² Joint or Infill	¹³ Consolidation Code	¹⁴ Order No.
-------------------------------	-------------------------------	----------------------------------	-------------------------

No allowable will be assigned to this completion until all interests have been consolidated or a non-standard unit has been approved by the division.



District I
1625 N. French Dr., Hobbs, NM 88240
Phone: (575) 393-6161 Fax: (575) 393-0720
District II
811 S. First St., Artesia, NM 88210
Phone: (575) 748-1283 Fax: (575) 748-9720
District III
1000 Rio Brazos Road, Aztec, NM 87410
Phone: (505) 334-6178 Fax: (505) 334-6170
District IV
1220 S. St. Francis Dr., Santa Fe, NM 87505
Phone: (505) 476-3460 Fax: (505) 476-3462

State of New Mexico
Energy, Minerals & Natural Resources
Department
OIL CONSERVATION DIVISION
1220 South St. Francis Dr.
Santa Fe, NM 87505

FORM C-102
Revised August 1, 2011
Submit one copy to appropriate
District Office

☐ AMENDED REPORT

WELL LOCATION AND ACREAGE DEDICATION PLAT

API Number 30-015-43774		Pool Code 97442		Pool Name Black River; Wolfcamp, East (G)	
Property Code		Property Name BRANTLEY STATE COM 13-24S-27E RB		Well Number #221H	
OGRID No. 228937		Operator Name MATADOR PRODUCTION COMPANY		Elevation 3089'	
10 Surface Location					
UL or lot no. D	Section 18	Township 24-S	Range 28-E	Lot Idn -	Feet from the 631'
		North/South line NORTH		Feet from the 187'	
		East/West line WEST		County EDDY	
UL or lot no. D	Section 13	Township 24-S	Range 27-E	Lot Idn -	Feet from the 330'
		North/South line NORTH		Feet from the 240'	
		East/West line WEST		County EDDY	
Dedicated Acres 320		Joint or Infill		Consolidation Code	
				Order No.	

No allowable will be assigned to this completion until all interests have been consolidated or a non-standard unit has been approved by the division.

				<p>17 OPERATOR CERTIFICATION</p> <p>I hereby certify that the information contained herein is true and complete to the best of my knowledge and belief, and that this organization either owns a working interest or undivided mineral interest in the land underlying the proposed bottom hole location or has a right to drill this well at this location pursuant to a contract with an owner of such a mineral or working interest, or to a voluntary pooling agreement or a compulsory pooling order heretofore entered by the division.</p> <p>Signature: <i>Trey Goodwin</i> Date: 11/9/2016</p> <p>Printed Name: <i>Trey Goodwin</i></p> <p>E-mail Address: <i>tgoodwin@matadorresources.com</i></p>
<p>18 SURVEYOR CERTIFICATION</p> <p>I hereby certify that the well location shown on this plat was plotted from field notes of actual surveys made by me or under my supervision, and that the same is true to the best of my belief.</p> <p>03/18/2016</p> <p>Date of Survey Signature and Seal of Professional Surveyor <i>Michael R. Brown</i> NEW MEXICO 18329 PROFESSIONAL SURVEYOR Certificate Number</p>				
<p>BOTTOM HOLE LOCATION NEW MEXICO EAST NAD 1927 X=556197 Y=445224 LAT.: N 32.2239081 LONG.: W 104.1516078 NAD 1983 X=597380 Y=445282 LAT.: N 32.2240285 LONG.: W 104.1521034</p>	<p>LAST PERFORATION POINT NEW MEXICO EAST NAD 1927 X=556287 Y=445225 LAT.: N 32.2239092 LONG.: W 104.1513168 NAD 1983 X=597470 Y=445283 LAT.: N 32.2240296 LONG.: W 104.1518123</p>	<p>FIRST PERFORATION POINT NEW MEXICO EAST NAD 1927 X=561000 Y=445254 LAT.: N 32.2239676 LONG.: W 104.1360759 NAD 1983 X=602183 Y=445312 LAT.: N 32.2240882 LONG.: W 104.1365708</p>	<p>SURFACE LOCATION NEW MEXICO EAST NAD 1927 X=581517 Y=444957 LAT.: N 32.2231472 LONG.: W 104.1344050 NAD 1983 X=602700 Y=445015 LAT.: N 32.2232678 LONG.: W 104.1348998</p>	

EXHIBIT 6

Application of Matador Production Company for administrative approval for off-lease measurement and approval to surface commingle (lease commingle) oil and gas production from the spacing units comprised of the S/2 of Section 12 and the N/2 of Section 13, Township 24 South, Range 27 East, NMPM, Eddy County, New Mexico.

AFFECTED PARTIES:

Alec G. McGonagill
1612 Westridge Rd.
Carlsbad, NM 88220
7015 1520 0002 0439 2359

Michael Davison Baskett
8 Melvin St #1023
Gaithersburg, MD 20877
7015 1520 0002 0439 2328

Childs & Bishop Law Offices, Inc.
310 North Lincoln
Odessa, TX 79761
7015 1520 0002 0439 2298

Commissioner of Public Lands
State of New Mexico
PO Box 1148
Santa Fe, NM 87504-1148
7015 1520 0002 0439 2267

Francis F Beeman and Bettye J Beeman
1405 W Ural Drive
Carlsbad, NM 88220-4064
7015 1520 0002 0439 2236

George H Brantley and Nancy H Brantley
1304 West Riverside Drive
Carlsbad, NM 88220
7015 1520 0002 0439 2212

Joe Beeman
7010 Ironton Ave., Apt. 511
Lubbock, TX 79424
7015 1520 0002 0439 2175

John E. Osborn
c/o Geneva Osborn
P.O. Box 486
Frederick, OK 73542
7015 1520 0002 0438 6167

B & G Royalties
P.O. Box 376
Artesia, NM 88211-0376
7015 1520 0002 0439 2342

Brandy Michelle Beeman
1006 Dogwood Lane
Carlsbad, NM 88220
7015 1520 0002 0439 2311

Clarence W. Ervin and Mary L.
Ervin, husband and wife
4016 Jones St.
Carlsbad, NM 88220
7015 1520 0002 0439 2281

Compound Properties, LLC
P.O. Box 2990
Ruidoso, NM 88355-2990
7015 1520 0002 0439 2250

George O. Stribling
61 Avenida Del Sol
Cedar Crest, NM 87008
7015 1520 0002 0439 2229

Hayhurst-Rook Family Educational Trust
under Trust Agreement dated June 6, 2006
518 E. Orchard
Carlsbad, NM 88220
7015 1520 0002 0439 2199

John D. Stribling
520 Ranchitos N.W.
Albuquerque, NM 87114
7015 1520 0002 0439 2168

Kirby, Ratliff, Manning & Greak, Inc.
c/o Louis M. Ratliff, Jr.
8 Firewood Ct.
The Hills, TX 78738
7015 1520 0002 0438 6150

Bettye J Beeman
1405 W Ural Drive
Carlsbad, NM 88220-4064
7015 1520 0002 0439 2335

Carmex, Inc.
P.O. Box 1718
Carlsbad, NM 88221
7015 1520 0002 0439 2304

Carmex, Inc
PO Box 1718
Carlsbad, NM 88220-1718
7015 1520 0002 0439 2274

Douglas Helm Baskett
P. O. Box 83
Montezuma, NM 87731-0083
7015 1520 0002 0439 2243

George O. Stribling, Trustee for
Margaret Stribling, Robert Cain, and
Salem Stribling
6818 Academy Parkway West NE
Albuquerque, NM 87114
7015 1520 0002 0439 2212

James C Wyman, Jr & Pauline E Wyman,
Tres of James C Wyman & Pauline E Wymar
Tr dtd 2/16/96
6142 Purple Aster Lane NE
Albuquerque, NM 87111-8083
7015 1520 0002 0439 2182

John E. Hall III
4709 State Hwy 121, Suite 132
The Colony, TX 75056
7015 1520 0002 0439 2151

Klipstine & Hanratty
P.O. Box 1507
Carlsbad, NM 88221
7015 1520 0002 0438 6143

EXHIBIT 6

Application of Matador Production Company for administrative approval for off-lease measurement and approval to surface commingle (lease commingle) oil and gas production from the spacing units comprised of the S/2 of Section 12 and the N/2 of Section 13, Township 24 South, Range 27 East, NMPM, Eddy County, New Mexico.

AFFECTED PARTIES:

Klipstine & Hanratty
c/o James W. Klipstine, Jr.
917 E. Green Acres Dr.
Hobbs, NM 88240
7015 1520 0002 0438 6136

Margaret Stribling
520 Ranchitos N.W.
Albuquerque, NM 87114
7015 1520 0002 0438 6105

Mark Allen Beeman
P.O. Box 8255
Roswell, NM 88202
7015 1520 0002 0438 6075

McAlister Royalties LLC
P. O. Box 1488
Midland, TX 79702-1488
7015 1520 0002 0438 6044

Patricia Ann Beeman Allen Trust
807 Alamosa Street
Carlsbad, NM 88220-9490
7015 1520 0002 0438 6013

Robert B Beeman
1520 N Guadalupe Street
Carlsbad, NM 88220
7015 1520 0002 0438 5986

Realeza Del Spear, LP
P.O. Box 1684
Midland, TX 79702
7015 1520 0002 0438 5955

Sara Marie Baskett
6043 44th Avenue, NE
Seattle, WA 98115-7513
7015 1520 0002 0438 5924

M44th LLC
52 Circle Dr N.W.
Albuquerque, NM 87122
7015 1520 0002 0438 6129

Martha Joy Stribling
918 Parkland Cir. SE
Albuquerque, NM 87108
7015 1520 0002 0438 6099

Mary Jo Ann Wyman
18011 Whispering Gables Lane
Dallas, TX 75287-6653
7015 1520 0002 0438 6068

Muriel M Diescher, Trustee of the William L
and Muriel M Diescher Trust
8 Suwannee CV
Mauumelle AR 72113-6521
7015 1520 0002 0438 6037

Peter A. Panagopoulos
1805 Sandy Lane
Carlsbad, NM 88220
7015 1520 0002 0438 6006

Roberta Patterson Parker
205 Creekside East Drive
Wilmington, NC 28411-6873
7015 1520 0002 0438 5979

Rolla R Hinkle III
P. O. Box 2292
Roswell, NM 88202-2292
7015 1520 0002 0438 5948

Seminole Hospital d/b/a
Memorial Hospital
209 NW 8th
Seminole, TX 79360
7015 1520 0002 0438 5917

Madison M Hinkle
P. O. Box 2292
Roswell, NM 88202-2292
7015 1520 0002 0438 6112

Mary Jo Beeman a/k/a Mary Jo Beeman a/k/a
Mary Jo Dickerson, a single woman
708 Popular
Loving, NM 88256
7015 1520 0002 0438 6082

Martin Scott Baskett
2647 Jefferson Street
Eugene, OR 97405
7015 1520 0002 0438 6051

Norma Beeman
1006 Dogwood Lane
Carlsbad, NM 88220
7015 1520 0002 0438 6020

Pecos Bend Royalties, LLLP
415 W. Wall Street, Suite 2207
Midland, TX 79701-4476
7015 1520 0002 0438 5993

R. C. Beveridge
P. O. Box 993
Midland, TX 79702
7015 1520 0002 0438 5962

Ross Duncan Properties LLC
P. O. Box 647
Artesia, NM 88211-0647
7015 1520 0002 0438 5931

Steven Stribling
5670 Iris Rd NE
Albuquerque, NM 87144
7015 1520 0002 0438 5900

EXHIBIT 6

Application of Matador Production Company for administrative approval for off-lease measurement and approval to surface commingle (lease commingle) oil and gas production from the spacing units comprised of the S/2 of Section 12 and the N/2 of Section 13, Township 24 South, Range 27 East, NMPM, Eddy County, New Mexico.

AFFECTED PARTIES:

Successor Trustee of Martha G.
Stribling, Trustee u/t/a dated September
24, 1996
75 Circle Drive NE
Albuquerque, NM 87122
7015 1520 0002 0438 5894

Tom Stribling, Trustee of the
LTS Trust
75 Circle Drive NE
Albuquerque, NM 87122
7015 1520 0002 0438 5863

The Beveridge Company
4305 N Garfield Suite 235
Midland, TX 79707-5533
7015 1520 0002 0438 5832

William L and Muriel M Diescher
Irrevocable Trust
John Diescher Succ Trustee
3946 Route 11 South
Cortland, NY 13045
7015 1520 0002 0438 5801

Mulder Living Trust dated November 14,
1995, Antonius Emil Mulder and Eleanor B
Mulder Trustees
1010 W 20th Avenue
Eugene, OR 97405-2105
7015 1520 0002 0438 5771

Thomas B. Stribling, Trustee of the
Thomas Luke Stribling Trust
75 Circle Drive NE
Albuquerque, NM 87122
7015 1520 0002 0438 5887

Thomas B. Stribling and wife,
Martha Stribling
520 Ranchitos Rd. NE
Albuquerque, NM 87114
7015 1520 0002 0438 5856

Virginia Patterson Skinner
4620 Wieuca Rd NE, #16
Atlanta, GA 30342
7015 1520 0002 0438 5825

Wilke LTD Co.
P.O. Box 1653
Artesia, NM 88211-1653
7015 1520 0002 0438 5795

Bertha Lorene Osborn
Unknown

Thomas Jack Gregory and Bonnie R.
Gregory, husband and wife
404 W. Texas
Carlsbad, NM 88220
7015 1520 0002 0438 5870

T L Rees
P. O. Box 1007
Colorado City, TX 79512
7015 1520 0002 0438 5849

William F Beeman
405 Juanita Street
Carlsbad, NM 88220-6230
7015 1520 0002 0438 5818

Word B Wilson Investments LP
110 W Louisiana, Ste 200
Midland, TX 79701
7015 1520 0002 0438 5788

HOLLAND & HART LLP



Jordan L. Kessler
Associate

Phone (505) 988-4421

Fax (505) 983-6043

jlkessler@hollandhart.com

January 13, 2017

CERTIFIED MAIL
RETURN RECEIPT REQUESTED

TO: ALL AFFECTED PARTIES

Re: Application of Matador Production Company for administrative approval for off-lease measurement and approval to surface commingle (lease commingle) oil and gas production from the spacing units comprised of the S/2 of Section 12 and the N/2 of Section 13, Township 24 South, Range 27 East, NMPM, Eddy County, New Mexico.

Ladies and Gentlemen:

Enclosed is a copy of the above-referenced application which was filed with the New Mexico Oil Conservation Division on this date. Any objection to this application must be filed in writing within twenty days from this date at the Division's Santa Fe office located at 1220 South St. Francis Drive, Santa Fe, New Mexico, 87505. If no objection is received within this twenty-day period, this application may be approved administratively by the Division.

If you have any questions about this application, please contact the following:

Dana Arnold
Matador Production Company
972-371-5284
darnold@matadorresources.com

Sincerely,

Jordan L. Kessler
ATTORNEY FOR
MATADOR PRODUCTION COMPANY

Production Summary Report
API: 30-015-41775
RUSTLER BREAKS 12 24 27 #001H

Production				
Year	Pool	Month	Oil(BBLS)	Gas(MCF)
2016	[98164] WC-015 G-07 S242712P;UPR WOLFCAMP	Mar	2411	23090
2016	[98164] WC-015 G-07 S242712P;UPR WOLFCAMP	Apr	2310	22503
2016	[98164] WC-015 G-07 S242712P;UPR WOLFCAMP	May	2401	27512
2016	[98164] WC-015 G-07 S242712P;UPR WOLFCAMP	Jun	2110	21912
2016	[98164] WC-015 G-07 S242712P;UPR WOLFCAMP	Jul	2081	21698
2016	[98164] WC-015 G-07 S242712P;UPR WOLFCAMP	Aug	2080	21041
CUM			116103	992525

McMillan, Michael, EMNRD

From: Jordan L. Kessler <JLKessler@hollandhart.com>
Sent: Friday, January 13, 2017 4:23 PM
To: McMillan, Michael, EMNRD
Cc: Lisamarie Ortiz
Subject: RE: Matador Rustler 13 24S 27E RB Well No. 221H surface facility
Attachments: RB 001H Production.xlsx

Mike,

Attached is production from the Rustler Breaks well. I don't think there is production from Brantley, but I will get back with you after I talk to Matador.

Happy long weekend!
Jordan

From: McMillan, Michael, EMNRD [mailto:Michael.McMillan@state.nm.us]
Sent: Friday, January 13, 2017 4:20 PM
To: Jordan L. Kessler
Cc: Lisamarie Ortiz
Subject: Matador Rustler 13 24S 27E RB Well No. 221H surface facility

Jordan:
I need the last 6 month's monthly and cum production for both wells
Have a good weekend
Mike

MICHAEL A. MCMILLAN

Engineering Bureau, Oil Conservation Division
1220 south St. Francis Dr., Santa Fe NM 87505
O: 505.476.3448
Michael.McMillan@state.nm.us

MMCMILLAN (PETROLEUM ENGINEER FOR OCD) SIGN OUT HELP

[Wells](#)
[Operator Data](#)
[OCD Review](#)
[OCD Only](#)
[Administration](#)
OCD Permitting
[Home](#)
[Land Searches](#)
[Land Details](#)
Section : 12-24S-27E

Type: Normal

Total Acres: 640

County: Eddy (15)

D (D) State ¹ State ² (15) 40	C (C) State ¹ State ² (15) 40	B (B) State ¹ State ² (15) 40	A (A) State ¹ State ² (15) 40
E (E) State ¹ State ² (15) 40	F (F) State ¹ State ² (15) 40	G (G) Fee ¹ Fee ² (15) 40	H (H) State ¹ State ² (15) 40
L (L) Fee ¹ Fee ² (15) 40	K (K) Fee ¹ Fee ² (15) 40	J (J) Fee ¹ Fee ² (15) 40	I (I) Fee ¹ Fee ² (15) 40
M (M) Fee ¹ Fee ² (15) 40	N (N) Fee ¹ Fee ² (15) 40	O (O) Fee ¹ Fee ² (15) 40	P (P) Fee ¹ Fee ² (15) 40

Note¹ = Surface Owner RightsNote² = Sub-Surface Mineral Rights**Land Restrictions**

No land restrictions found for this section.

[Return to Search](#)

New Mexico Energy, Minerals and Natural Resources Department | Copyright 2012
1220 South St. Francis Drive | Santa Fe, NM 87505 | P: (505) 476-3200 | F: (505) 476-3220

[EMNRD Home](#)
[OCD Main Page](#)
[OCD Rules](#)
[Help](#)

MMCMILLAN (PETROLEUM ENGINEER FOR OCD) SIGN OUT HELP

[Wells](#)
[Operator Data](#)
[OCD Review](#)
[OCD Only](#)
[Administration](#)

OCD Permitting

[Home](#)
[Land Searches](#)
[Land Details](#)

Section : 13-24S-27E

Type: Normal

Total Acres: 640

County: Eddy (15)

D (D) Fee ¹ Fee ² (15) 40	C (C) Fee ¹ Fee ² (15) 40	B (B) Fee ¹ Fee ² (15) 40	A (A) Fee ¹ Fee ² (15) 40
E (E) State ¹ State ² (15) 40	F (F) Fee ¹ Fee ² (15) 40	G (G) Fee ¹ Fee ² (15) 40	H (H) Fee ¹ Fee ² (15) 40
L (L) State ¹ State ² (15) 40	K (K) State ¹ State ² (15) 40	J (J) Fee ¹ Fee ² (15) 40	I (I) Fee ¹ Fee ² (15) 40
M (M) State ¹ State ² (15) 40	N (N) State ¹ State ² (15) 40	O (O) Fee ¹ Fee ² (15) 40	P (P) Fee ¹ Fee ² (15) 40

Note ¹ = Surface Owner RightsNote ² = Sub-Surface Mineral Rights

Land Restrictions

No land restrictions found for this section.

[Return to Search](#)

New Mexico Energy, Minerals and Natural Resources Department | Copyright 2012
 1220 South St. Francis Drive | Santa Fe, NM 87505 | P: (505) 476-3200 | F: (505) 476-3220

[EMNRD Home](#)
[OCD Main Page](#)
[OCD Rules](#)
[Help](#)

Legal Notice

To: Alec G. McGonagill, his heirs and devisees, Francis F Beeman and Bettye J Beeman, their heirs and devisees, B& G Royalties, George O. Stribling, his heirs and devisees, Bettye J Beeman, her heirs and devisees, George O. Strubling, Trustee for Margaret Stribling, Robert Cain, and Salem Stribling, Bertha Lorene Osborn, her heirs and devisees, Brandy Michelle Beeman, her heirs and devisees, George H. Brantley and Nancy H. Brantley, their heirs and devisees, Carmex, Inc., Hayhurst-Rook Family Educational Trust under Trust Agreement dated June 6, 2006, Childs & Bishop Law Offices, Inc., Chance W. Ervin and Mary L. Ervin, their heirs and devisees, James C. Wyman, Jr. and Pauline E. Wyman, Tres of James C. Wyman and Pauline E. Wyman Trust dated 2/16/96, Clarence E. Ervin and Mary L. Ervin, their heirs and devisees, Carmex, Inc., Joe Beeman, his heirs and devisees, John D. Stribling, his heirs and devisees, John E. Hall III, his heirs and devisees, Compound Properties LLC, John E. Osborn, heirs and devisees, Douglass Helm Baskett, his heirs and devisees, Kirby, Ratliff, Manning & Greak, Inc., McAlister Royalties LLC, Klipstine & Hanratty, Michael Davison Baskett, his heirs and devisees, Mulder Living Trust dated November 14, 1995, Antonius Emul Mulder and Eleanor Mulder, Trustees, M44th LLC, Muriel M. Diescher, Trustee of the William L and Muriel M Diescher Trust, Madison M. Hinkle, her heirs and devisees, Norma Beeman, her heirs and devisees, Margaret Stribling, her heirs and devisees, Patricia Ann Beeman Allen Trust, Martha Joy Stribling, her heirs and devisees, Peter A. Panagopoulos, his heirs and devisees, Mary Jo Beeman, her heirs and devisees, Pecos Bend Royalties, LLLP, Mark Allen Beeman, his heirs and devisees, Robert B. Beeman, his heirs and devisees, Mary Jo Ann Wyman, her heirs and devisees, Roberta Patterson Parker, her heirs and devisees, Martin Scott Baskett, his heirs and devisees, R.C. Beveridge, their heirs and devisees, Realeza Del Spear, LP, Tom Stribling, Trustee of the LTS Trust, Rolla R Hinkle III, her heirs and devisees, Thomas B and Martha Stribling, their heirs and devisees, Ross Duncan Properties LLC, TL Rees, his heirs and devisees, Sara Marie Basket, her heirs and devisees, The Beveridge Company, Seminole Hospital, Memorial Hospital, Virginia Patterson Skinner, her heirs and devisees, Steven Stribling, his heirs and devisees, William F Beeman, his heirs and devisees, Successor Trustee of Martha G. Stribling Trustee u/t/a dated September 24, 1996, William L and Muriel M Diescher Irrevocable Trust, Thomas B. Stribling, Trustee of the Thomas Luke Stribling Trust, Wilke LTD Co., Thomas Jack Gregory and Bonnie R. Gregory, their heirs and devisees, Word B Wilson Investments LP, Zia Royalty LLC, and any unknown person who has a mineral interest in the N/2 of Section 13 and the S/2 of Section 12, Township 24 South, Range 28 East, NMPM, Eddy County, New Mexico.

Application of Matador Production Company for administrative approval for off-lease measurement and approval to surface lease commingle oil and gas production from the Black River; Wolfcamp, East (Gas) Pool (Pool Code 97442) *from all existing and future wells and existing and future leases* within the spacing units comprised of the S/2 of Section 12 and the N/2 of Section 13, Township 24 South, Range 27 East, NMPM, Eddy County, New Mexico. Pursuant to 19.15.12.10(C)(4)(g), Matador also seeks

authority to commingle production into the DLK Black River South Trunk Line from future leases with notice provided only to interest owners within future leases. Matador seeks approval to surface commingle oil and gas production at a common tank battery from the Black River; Wolfcamp, East (Gas) Pool (Pool Code 97442) for all existing and future wells at a surface facility located in the SE/4 SE/4 (Unit P) of Section 12. Any objection to this application must be filed in writing within twenty days from date of publication with the applicant and the New Mexico Oil Conservation Division, 1220 South St. Francis Drive, Santa Fe, New Mexico, 87505. If no objection is received within this twenty-day period, this application may be approved administratively by the Division. If you have any questions about this application, please contact Dana R. Arnold, 5400 LBJ Freeway, Suite 1500, Dallas, TX 75240, (972) 371-5284, darnold@matadorresources.com.