

Submit 1 Copy To Appropriate District  
Office  
District I - (575) 393-6161  
1625 N. French Dr., Hobbs, NM 88240  
District II - (575) 748-1283  
811 S. First St., Artesia, NM 88210  
District III - (505) 334-6178  
1000 Rio Brazos Rd., Aztec, NM 87410  
District IV - (505) 476-3460  
1220 S. St. Francis Dr., Santa Fe, NM  
87505

State of New Mexico  
Energy, Minerals and Natural Resources

Form C-103  
Revised July 18, 2013

OIL CONSERVATION DIVISION  
1220 South St. Francis Dr.  
Santa Fe, NM 87505

WELL API NO. 30-015-44163
5. Indicate Type of Lease STATE <input type="checkbox"/> FEE <input checked="" type="checkbox"/>
6. State Oil & Gas Lease No. 313993
7. Lease Name or Unit Agreement Name TIGER 14 24S 28E RB
8. Well Number 221H
9. OGRID Number 228937
10. Pool name or Wildcat PURPLE SAGE;WOLFCAMP (GAS)

SUNDRY NOTICES AND REPORTS ON WELLS (DO NOT USE THIS FORM FOR PROPOSALS TO DRILL OR TO DEEPEN OR PLUG BACK TO A DIFFERENT RESERVOIR. USE "APPLICATION FOR PERMIT" (FORM C-101) FOR SUCH PROPOSALS.)	
1. Type of Well: Oil Well <input type="checkbox"/> Gas Well <input checked="" type="checkbox"/> Other	
2. Name of Operator Matador Production Company	
3. Address of Operator 5400 LBJ Freeway STE 1500 Dallas, TX 75240	
4. Well Location Unit Letter A : 428 feet from the North line and 300 feet from the East line Section 14 Township 24S Range 28E NMPM County EDDY	
11. Elevation (Show whether DR, RKB, RT, GR, etc.) 2977'	

12. Check Appropriate Box to Indicate Nature of Notice, Report or Other Data

NOTICE OF INTENTION TO:  
PERFORM REMEDIAL WORK ☐ PLUG AND ABANDON ☐  
TEMPORARILY ABANDON ☐ CHANGE PLANS ☐  
PULL OR ALTER CASING ☐ MULTIPLE COMPL ☐  
DOWNHOLE COMMINGLE ☐  
CLOSED-LOOP SYSTEM ☐  
OTHER: ☐

SUBSEQUENT REPORT OF:  
REMEDIAL WORK ☐ ALTERING CASING ☐  
COMMENCE DRILLING OPNS. ☐ P AND A ☐  
CASING/CEMENT JOB ☐  
OTHER: CTB-818 ☒

13. Describe proposed or completed operations. (Clearly state all pertinent details, and give pertinent dates, including estimated date of starting any proposed work). SEE RULE 19.15.7.14 NMAC. For Multiple Completions: Attach wellbore diagram of proposed completion or recompletion.

Pursuant to Administrative Order CTB-818,

Matador Production Company as Operator respectfully requests administrative approval to surface commingle separately metered production from the PURPLE SAGE;WOLFCAMP (GAS) for the TIGER 14 24S 28E RB 201H. The tank battery is located in the N/2 of Section 13 and the N/2 of Section 14 of Township 24 South, Range 28 East, Eddy County. All production will be allocated using readings from individual well meters. All interested parties were previously notified as part of Administrative Order CTB-818.

Spud Date:

7/23/2017

Rig Release Date:

I hereby certify that the information above is true and complete to the best of my knowledge and belief.

SIGNATURE

*Sherri Gore*

TITLE Regulatory Tech

DATE

7/9/17

Type or print name Sherri Gore

E-mail address: sgore@matadorresources.com

PHONE: 972-371-5467

For State Use Only

APPROVED BY:

TITLE

DATE

Conditions of Approval (if any):

*Michael McMillan Engineering Bureau*

District I  
1625 N French Dr., Hobbs, NM 88240  
Phone: (575) 393-6161 Fax: (575) 393-0720  
District II  
811 S. First St., Artesia, NM 88210  
Phone: (575) 748-1283 Fax: (575) 748-9720  
District III  
1000 Rio Bonita Road, Aztec, NM 87410  
Phone: (505) 334-6178 Fax: (505) 334-6170  
District IV  
1220 S. St. Francis Dr., Santa Fe, NM 87505  
Phone: (505) 476-3460 Fax: (505) 476-3462

State of New Mexico  
Energy, Minerals & Natural Resources  
Department  
OIL CONSERVATION DIVISION  
1220 South St. Francis Dr.  
Santa Fe, NM 87505

FORM C-102  
Revised August 1, 2011  
Submit one copy to appropriate  
District Office

☐ AMENDED REPORT

WELL LOCATION AND ACREAGE DEDICATION PLAT

<sup>1</sup> API Number <b>30-015-44163</b>	<sup>2</sup> Pool Code <b>98220</b>	<sup>3</sup> Pool Name <b>PURPLE SAGE; WOLFCAMP (GAS)</b>
<sup>4</sup> Property Code <b>313993</b>	<sup>5</sup> Property Name <b>TIGER 14-24S-28E RB</b>	<sup>6</sup> Well Number <b>#221H</b>
<sup>7</sup> OGRID No. <b>228937</b>	<sup>8</sup> Operator Name <b>MATADOR PRODUCTION COMPANY</b>	<sup>9</sup> Elevation <b>2977'</b>

<sup>10</sup>Surface Location

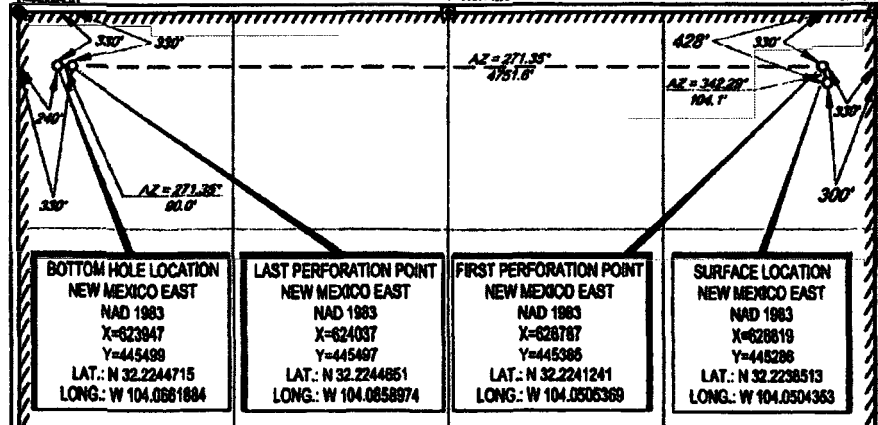
UL or lot no.	Section	Township	Range	Lot Idn	Feet from the	North/South line	Feet from the	East/West line	County
<b>A</b>	<b>14</b>	<b>24-S</b>	<b>28-E</b>	<b>-</b>	<b>428'</b>	<b>NORTH</b>	<b>300'</b>	<b>EAST</b>	<b>EDDY</b>

UL or lot no.	Section	Township	Range	Lot Idn	Feet from the	North/South line	Feet from the	East/West line	County
<b>D</b>	<b>14</b>	<b>24-S</b>	<b>28-E</b>	<b>-</b>	<b>330'</b>	<b>NORTH</b>	<b>240'</b>	<b>WEST</b>	<b>EDDY</b>

<sup>11</sup> Dedicated Acres <b>320</b>	<sup>12</sup> Joint or Infill	<sup>13</sup> Consolidation Code	<sup>14</sup> Order No.
---------------------------------------------	-------------------------------	----------------------------------	-------------------------

No allowable will be assigned to this completion until all interests have been consolidated or a non-standard unit has been approved by the division.

X=623708.01 Y=445834.81 X=628411.17 Y=445771.59 X=628112.15 Y=445707.70



<b>BOTTOM HOLE LOCATION</b> NEW MEXICO EAST NAD 1983 X=623947 Y=445499 LAT.: N 32.2244715 LONG.: W 104.0881884	<b>LAST PERFORATION POINT</b> NEW MEXICO EAST NAD 1983 X=624037 Y=445497 LAT.: N 32.2244851 LONG.: W 104.0858974	<b>FIRST PERFORATION POINT</b> NEW MEXICO EAST NAD 1983 X=628787 Y=445386 LAT.: N 32.2241241 LONG.: W 104.0506369	<b>SURFACE LOCATION</b> NEW MEXICO EAST NAD 1983 X=628619 Y=445286 LAT.: N 32.2238513 LONG.: W 104.0504363
----------------------------------------------------------------------------------------------------------------------------------	------------------------------------------------------------------------------------------------------------------------------------	-------------------------------------------------------------------------------------------------------------------------------------	------------------------------------------------------------------------------------------------------------------------------

<p><b>17 OPERATOR CERTIFICATION</b></p> <p>I hereby certify that the information contained herein is true and complete to the best of my knowledge and belief, and that this organization either owns a working interest or undivided mineral interest in the land including the proposed bottom hole location or has a right to drill this well of this location pursuant to a contract with an owner of such a mineral or working interest, or to a voluntary pooling agreement or a compulsory pooling order heretofore entered by the division.</p> <p><i>Sara Hartsfield</i> 5.4.17 Signature Date</p> <p><b>Sara Hartsfield</b> Printed Name</p> <p>shartsfield@matadorresources.com E-mail Address</p>	<p><b>18 SURVEYOR CERTIFICATION</b></p> <p>I hereby certify that the well location shown on this plat was plotted from field notes of actual surveys made by me or under my supervision, and that the same is true to the best of my belief.</p> <p>04/19/2017 Date of Survey</p> <p><i>[Signature]</i> Signature</p> <p><b>18329</b> Certificate Number</p>
---------------------------------------------------------------------------------------------------------------------------------------------------------------------------------------------------------------------------------------------------------------------------------------------------------------------------------------------------------------------------------------------------------------------------------------------------------------------------------------------------------------------------------------------------------------------------------------------------------------------------------------------------------------------------------------------------------------------------	--------------------------------------------------------------------------------------------------------------------------------------------------------------------------------------------------------------------------------------------------------------------------------------------------------------------------------------------------------------------------

S:\SURVEY\MATADOR\_RESOURCES\TIGER\_14-24S-28E\_RB\_221H\TIGER\_14-24S-28E\_RB\_221H.DWG 12/2/2017 8:02:00 PM cccdon

5-11-17

Submit 1 Copy To Appropriate District Office  
District I - (575) 393-6161  
1625 N. French Dr., Hobbs, NM 88240  
District II - (575) 748-1283  
811 S. First St., Artesia, NM 88210  
District III - (505) 334-6178  
1000 Rio Brazos Rd., Aztec, NM 87410  
District IV - (505) 476-3460  
1220 S. St. Francis Dr., Santa Fe, NM 87505

State of New Mexico  
Energy, Minerals and Natural Resources

Form C-103  
Revised July 18, 2013

OIL CONSERVATION DIVISION  
1220 South St. Francis Dr.  
Santa Fe, NM 87505

WELL API NO. 30-015-44162
5. Indicate Type of Lease STATE <input type="checkbox"/> FEE <input checked="" type="checkbox"/>
6. State Oil & Gas Lease No. 313993
7. Lease Name or Unit Agreement Name TIGER 14 24S 28E RB
8. Well Number 201H
9. OGRID Number 228937
10. Pool name or Wildcat PURPLE SAGE;WOLFCAMP (GAS)

SUNDRY NOTICES AND REPORTS ON WELLS (DO NOT USE THIS FORM FOR PROPOSALS TO DRILL OR TO DEEPEN OR PLUG BACK TO A DIFFERENT RESERVOIR. USE "APPLICATION FOR PERMIT" (FORM C-101) FOR SUCH PROPOSALS.)	
1. Type of Well: Oil Well <input type="checkbox"/> Gas Well <input checked="" type="checkbox"/> Other	
2. Name of Operator Matador Production Company	
3. Address of Operator 5400 LBJ Freeway STE 1500 Dallas, TX 75240	
4. Well Location Unit Letter A : 429 feet from the North line and 330 feet from the East line Section 14 Township 24S Range 28E NMPM County EDDY	
11. Elevation (Show whether DR, RKB, RT, GR, etc.) 2977'	

12. Check Appropriate Box to Indicate Nature of Notice, Report or Other Data

NOTICE OF INTENTION TO:		SUBSEQUENT REPORT OF:	
PERFORM REMEDIAL WORK <input type="checkbox"/>	PLUG AND ABANDON <input type="checkbox"/>	REMEDIAL WORK <input type="checkbox"/>	ALTERING CASING <input type="checkbox"/>
TEMPORARILY ABANDON <input type="checkbox"/>	CHANGE PLANS <input type="checkbox"/>	COMMENCE DRILLING OPNS. <input type="checkbox"/>	P AND A <input type="checkbox"/>
PULL OR ALTER CASING <input type="checkbox"/>	MULTIPLE COMPL <input type="checkbox"/>	CASING/CEMENT JOB <input type="checkbox"/>	
DOWNHOLE COMMINGLE <input type="checkbox"/>			
CLOSED-LOOP SYSTEM <input type="checkbox"/>			
OTHER: <input type="checkbox"/>		OTHER: CTB-818 <input checked="" type="checkbox"/>	

13. Describe proposed or completed operations. (Clearly state all pertinent details, and give pertinent dates, including estimated date of starting any proposed work). SEE RULE 19.15.7.14 NMAC. For Multiple Completions: Attach wellbore diagram of proposed completion or recompletion.

Pursuant to Administrative Order CTB-818,

Matador Production Company as Operator respectfully requests administrative approval to surface commingle separately metered production from the PURPLE SAGE;WOLFCAMP (GAS) for the TIGER 14 24S 28E RB 201H. The tank battery is located in the N/2 of Section 13 and the N/2 of Section 14 of Township 24 South, Range 28 East, Eddy County. All production will be allocated using readings from individual well meters. All interested parties were previously notified as part of Administrative Order CTB-818.

Spud Date:

7/23/2017

Rig Release Date:

I hereby certify that the information above is true and complete to the best of my knowledge and belief.

SIGNATURE

*Sherri Gore*

TITLE Regulatory Tech

DATE

7/9/17

Type or print name Sherri Gore

E-mail address: sgore@matadorresources.com

PHONE: 972-371-5467

For State Use Only

APPROVED BY:

TITLE

DATE

Conditions of Approval (if any):

*Michael McMillan Engineering Bureau*

District I  
1625 N. French Dr., Hobbs, NM 88240  
Phone: (575) 393-6161 Fax: (575) 393-0720  
District II  
611 S First St., Artesia, NM 88210  
Phone: (575) 748-1283 Fax: (575) 748-9720  
District III  
1000 Rio Brazos Road, Aztec, NM 87410  
Phone: (505) 334-6178 Fax: (505) 334-6170  
District IV  
1220 S. St. Francis Dr., Santa Fe, NM 87505  
Phone: (505) 476-3460 Fax: (505) 476-3462

State of New Mexico  
Energy, Minerals & Natural Resources  
Department  
OIL CONSERVATION DIVISION  
1220 South St. Francis Dr.  
Santa Fe, NM 87505

FORM C-102  
Revised August 1, 2011  
Submit one copy to appropriate  
District Office

☐ AMENDED REPORT

WELL LOCATION AND ACREAGE DEDICATION PLAT

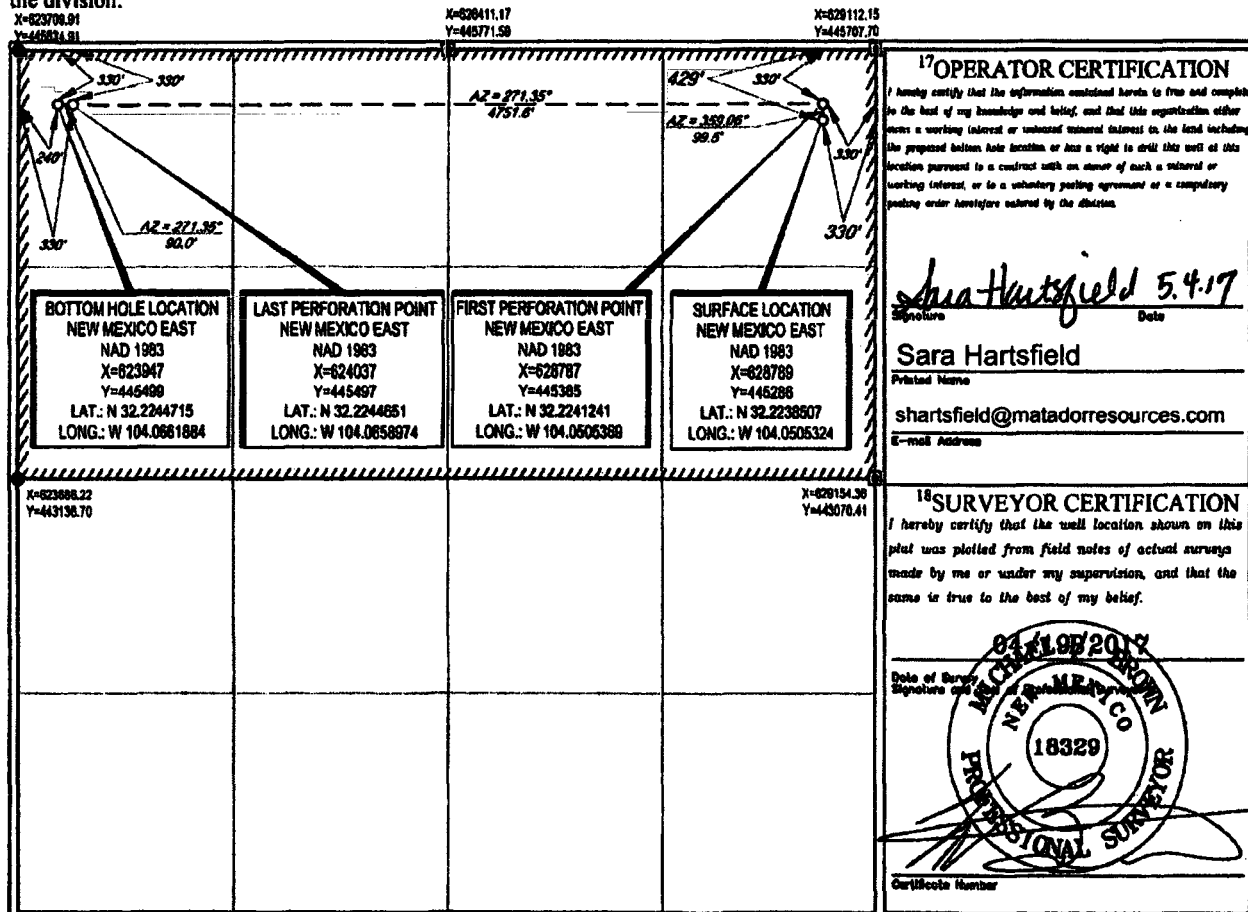
<sup>1</sup> API Number <b>30-015-44162</b>	<sup>2</sup> Pool Code <b>98220</b>	<sup>3</sup> Pool Name <b>PURPLE SAGE; WOLFCAMP (GAS)</b>
<sup>4</sup> Property Code <b>313993</b>	<sup>5</sup> Property Name <b>TIGER 14-24S-28E RB</b>	<sup>6</sup> Well Number <b>#201H</b>
<sup>7</sup> OGRID No. <b>228937</b>	<sup>8</sup> Operator Name <b>MATADOR PRODUCTION COMPANY</b>	<sup>9</sup> Elevation <b>2977'</b>

<sup>10</sup> Surface Location									
UL or lot no.	Section	Township	Range	Lot Idn	Feet from the	North/South line	Feet from the	East/West line	County
<b>A</b>	<b>14</b>	<b>24-S</b>	<b>28-E</b>	<b>-</b>	<b>429'</b>	<b>NORTH</b>	<b>330'</b>	<b>EAST</b>	<b>EDDY</b>

UL or lot no.	Section	Township	Range	Lot Idn	Feet from the	North/South line	Feet from the	East/West line	County
<b>D</b>	<b>14</b>	<b>24-S</b>	<b>28-E</b>	<b>-</b>	<b>330'</b>	<b>NORTH</b>	<b>240'</b>	<b>WEST</b>	<b>EDDY</b>

<sup>11</sup> Dedicated Acre <b>320</b>	<sup>12</sup> Joint or Infill	<sup>13</sup> Consolidation Code	<sup>14</sup> Order No.
--------------------------------------------	-------------------------------	----------------------------------	-------------------------

No allowable will be assigned to this completion until all interests have been consolidated or a non-standard unit has been approved by the division.



S:\SURVEY\MATADOR\_RESOURCES\TIGER\_14-24S-28E\_RB\_201H\FINAL\_PRODUCT\BULO\_TIGER\_14-24S-28E\_RB\_201H.DWG 4/24/2017 8:16:04 PM cccan

5-11-17