



# AE Order Number Banner

## Report Description

This report shows an AE Order Number in Barcode format for purposes of scanning. The Barcode format is Code 39.



**App Number:** pCS1731039100

**144B - 13127**

**WILLIAMS FOUR CORNERS**

11/6/2017

District I  
1625 N. French Dr., Hobbs, NM 88240  
District II  
811 S. First St., Artesia, NM 88210  
District III  
1000 Rio Brazos Road, Aztec, NM 87410  
District IV  
1220 S. St. Francis Dr., Santa Fe, NM 87505

State of New Mexico  
Energy Minerals and Natural Resources  
Department  
Oil Conservation Division  
1220 South St. Francis Dr.  
Santa Fe, NM 87505

Form C-144  
Revised June 6, 2013

For temporary pits, below-grade tanks, and multi-well fluid management pits, submit to the appropriate NMOCD District Office.  
For permanent pits submit to the Santa Fe Environmental Bureau office and provide a copy to the appropriate NMOCD District Office.

Pit, Below-Grade Tank, or  
**13127 Proposed Alternative Method Permit or Closure Plan Application**

- Type of action: ☐ Below grade tank registration  
☐ Permit of a pit or proposed alternative method  
☐ Closure of a pit, below-grade tank, or proposed alternative method  
☐ Modification to an existing permit/or registration  
☒ Closure plan only submitted for an existing permitted or non-permitted pit, below-grade tank, or proposed alternative method

**Instructions: Please submit one application (Form C-144) per individual pit, below-grade tank or alternative request**

Please be advised that approval of this request does not relieve the operator of liability should operations result in pollution of surface water, ground water or the environment. Nor does approval relieve the operator of its responsibility to comply with any other applicable governmental authority's rules, regulations or ordinances.

1.  
Operator: Williams Four Corners LLC OGRID #: \_\_\_\_\_  
Address: 188 County Road 4900, Bloomfield, NM 87413  
Facility or well name: 31-6 CDP  
API Number: \_\_\_\_\_ OCD Permit Number: \_\_\_\_\_  
U/L or Qtr/Qtr SW/4 SW/4 Section 01 Township 30N Range 06W County: San Juan  
Center of Proposed Design: Latitude 36.835452 Longitude -107.420297 NAD: ☐ 1927 ☒ 1983  
Surface Owner: ☒ Federal ☐ State ☐ Private ☐ Tribal Trust or Indian Allotment

2.  
☐ **Pit:** Subsection F, G or J of 19.15.17.11 NMAC  
Temporary: ☐ Drilling ☐ Workover  
☐ Permanent ☐ Emergency ☐ Cavitation ☐ P&A ☐ Multi-Well Fluid Management Low Chloride Drilling Fluid ☐ yes ☐ no  
☐ Lined ☐ Unlined Liner type: Thickness \_\_\_\_\_ mil ☐ LLDPE ☐ HDPE ☐ PVC ☐ Other \_\_\_\_\_  
☐ String-Reinforced  
Liner Seams: ☐ Welded ☐ Factory ☐ Other \_\_\_\_\_ Volume: \_\_\_\_\_ bbl Dimensions: L \_\_\_\_\_ x W \_\_\_\_\_ x D \_\_\_\_\_

3.  
☒ **Below-grade tank:** Subsection I of 19.15.17.11 NMAC  
Volume: 165 bbl Type of fluid: Waste Water  
Tank Construction material: Steel  
☐ Secondary containment with leak detection ☐ Visible sidewalls, liner, 6-inch lift and automatic overflow shut-off  
☐ Visible sidewalls and liner ☒ Visible sidewalls only ☐ Other \_\_\_\_\_  
Liner type: Thickness \_\_\_\_\_ mil ☐ HDPE ☐ PVC ☐ Other \_\_\_\_\_

4.  
☐ **Alternative Method:**  
Submittal of an exception request is required. Exceptions must be submitted to the Santa Fe Environmental Bureau office for consideration of approval.

5.  
**Fencing:** Subsection D of 19.15.17.11 NMAC (*Applies to permanent pits, temporary pits, and below-grade tanks*)  
☐ Chain link, six feet in height, two strands of barbed wire at top (*Required if located within 1000 feet of a permanent residence, school, hospital, institution or church*)  
☐ Four foot height, four strands of barbed wire evenly spaced between one and four feet  
☒ Alternate. Please specify eight foot fence surrounds facility



6.

**Netting:** Subsection E of 19.15.17.11 NMAC (*Applies to permanent pits and permanent open top tanks*)

☐ Screen ☐ Netting ☒ Other covered top

☒ Monthly inspections (If netting or screening is not physically feasible)

7.

**Signs:** Subsection C of 19.15.17.11 NMAC

☒ 12"x 24", 2" lettering, providing Operator's name, site location, and emergency telephone numbers

☐ Signed in compliance with 19.15.16.8 NMAC

8.

**Variances and Exceptions:**

Justifications and/or demonstrations of equivalency are required. Please refer to 19.15.17 NMAC for guidance.

**Please check a box if one or more of the following is requested, if not leave blank:**

☐ Variance(s): Requests must be submitted to the appropriate division district for consideration of approval.

☐ Exception(s): Requests must be submitted to the Santa Fe Environmental Bureau office for consideration of approval.

9.

**Siting Criteria (regarding permitting):** 19.15.17.10 NMAC

**Instructions:** The applicant must demonstrate compliance for each siting criteria below in the application. Recommendations of acceptable source material are provided below. Siting criteria does not apply to drying pads or above-grade tanks.

**General siting**

**Ground water is less than 25 feet below the bottom of a low chloride temporary pit or below-grade tank.**

- ☒ NM Office of the State Engineer - iWATERS database search; ☒ USGS; ☐ Data obtained from nearby wells

☐ Yes ☒ No  
☐ NA

**Ground water is less than 50 feet below the bottom of a Temporary pit, permanent pit, or Multi-Well Fluid Management pit.**

NM Office of the State Engineer - iWATERS database search; USGS; Data obtained from nearby wells

☐ Yes ☐ No  
☐ NA

Within incorporated municipal boundaries or within a defined municipal fresh water well field covered under a municipal ordinance adopted pursuant to NMSA 1978, Section 3-27-3, as amended. **(Does not apply to below grade tanks)**

- Written confirmation or verification from the municipality; Written approval obtained from the municipality

☐ Yes ☐ No

Within the area overlying a subsurface mine. **(Does not apply to below grade tanks)**

- Written confirmation or verification or map from the NM EMNRD-Mining and Mineral Division

☐ Yes ☐ No

Within an unstable area. **(Does not apply to below grade tanks)**

- Engineering measures incorporated into the design; NM Bureau of Geology & Mineral Resources; USGS; NM Geological Society; Topographic map

☐ Yes ☐ No

Within a 100-year floodplain. **(Does not apply to below grade tanks)**

- FEMA map

☐ Yes ☐ No

**Below Grade Tanks**

Within 100 feet of a continuously flowing watercourse, significant watercourse, lake bed, sinkhole, wetland or playa lake (measured from the ordinary high-water mark).

- Topographic map; Visual inspection (certification) of the proposed site

☐ Yes ☒ No

Within 200 horizontal feet of a spring or a fresh water well used for public or livestock consumption;

- NM Office of the State Engineer - iWATERS database search; Visual inspection (certification) of the proposed site

☐ Yes ☒ No

**Temporary Pit using Low Chloride Drilling Fluid** (maximum chloride content 15,000 mg/liter)

Within 100 feet of a continuously flowing watercourse, or any other significant watercourse or within 200 feet of any lakebed, sinkhole, or playa lake (measured from the ordinary high-water mark). (Applies to low chloride temporary pits.)

- Topographic map; Visual inspection (certification) of the proposed site

☐ Yes ☐ No

Within 300 feet from a occupied permanent residence, school, hospital, institution, or church in existence at the time of initial application.

- Visual inspection (certification) of the proposed site; Aerial photo; Satellite image

☐ Yes ☐ No

Within 200 horizontal feet of a spring or a private, domestic fresh water well used by less than five households for domestic or stock watering purposes, or 300feet of any other fresh water well or spring, in existence at the time of the initial application.

NM Office of the State Engineer - iWATERS database search; Visual inspection (certification) of the proposed site

☐ Yes ☐ No



Within 100 feet of a wetland.

- US Fish and Wildlife Wetland Identification map; Topographic map; Visual inspection (certification) of the proposed site

☐ Yes ☐ No

### **Temporary Pit Non-low chloride drilling fluid**

Within 300 feet of a continuously flowing watercourse, or any other significant watercourse, or within 200 feet of any lakebed, sinkhole, or playa lake (measured from the ordinary high-water mark).

- Topographic map; Visual inspection (certification) of the proposed site

☐ Yes ☐ No

Within 300 feet from a permanent residence, school, hospital, institution, or church in existence at the time of initial application.

- Visual inspection (certification) of the proposed site; Aerial photo; Satellite image

☐ Yes ☐ No

Within 500 horizontal feet of a spring or a private, domestic fresh water well used by less than five households for domestic or stock watering purposes, or 1000 feet of any other fresh water well or spring, in the existence at the time of the initial application;

- NM Office of the State Engineer - iWATERS database search; Visual inspection (certification) of the proposed site

☐ Yes ☐ No

Within 300 feet of a wetland.

- US Fish and Wildlife Wetland Identification map; Topographic map; Visual inspection (certification) of the proposed site

☐ Yes ☐ No

### **Permanent Pit or Multi-Well Fluid Management Pit**

Within 300 feet of a continuously flowing watercourse, or 200 feet of any other significant watercourse, or lakebed, sinkhole, or playa lake (measured from the ordinary high-water mark).

- Topographic map; Visual inspection (certification) of the proposed site

☐ Yes ☐ No

Within 1000 feet from a permanent residence, school, hospital, institution, or church in existence at the time of initial application.

- Visual inspection (certification) of the proposed site; Aerial photo; Satellite image

☐ Yes ☐ No

Within 500 horizontal feet of a spring or a fresh water well used for domestic or stock watering purposes, in existence at the time of initial application.

- NM Office of the State Engineer - iWATERS database search; Visual inspection (certification) of the proposed site

☐ Yes ☐ No

Within 500 feet of a wetland.

- US Fish and Wildlife Wetland Identification map; Topographic map; Visual inspection (certification) of the proposed site

☐ Yes ☐ No

10.

#### **Temporary Pits, Emergency Pits, and Below-grade Tanks Permit Application Attachment Checklist:** Subsection B of 19.15.17.9 NMAC

**Instructions:** Each of the following items must be attached to the application. Please indicate, by a check mark in the box, that the documents are attached.

- ☐ Hydrogeologic Report (Below-grade Tanks) - based upon the requirements of Paragraph (4) of Subsection B of 19.15.17.9 NMAC
- ☐ Hydrogeologic Data (Temporary and Emergency Pits) - based upon the requirements of Paragraph (2) of Subsection B of 19.15.17.9 NMAC
- ☐ Siting Criteria Compliance Demonstrations - based upon the appropriate requirements of 19.15.17.10 NMAC
- ☐ Design Plan - based upon the appropriate requirements of 19.15.17.11 NMAC
- ☐ Operating and Maintenance Plan - based upon the appropriate requirements of 19.15.17.12 NMAC
- ☐ Closure Plan (Please complete Boxes 14 through 18, if applicable) - based upon the appropriate requirements of Subsection C of 19.15.17.9 NMAC and 19.15.17.13 NMAC

☐ Previously Approved Design (attach copy of design) API Number: \_\_\_\_\_ or Permit Number: \_\_\_\_\_

11.

#### **Multi-Well Fluid Management Pit Checklist:** Subsection B of 19.15.17.9 NMAC

**Instructions:** Each of the following items must be attached to the application. Please indicate, by a check mark in the box, that the documents are attached.

- ☐ Design Plan - based upon the appropriate requirements of 19.15.17.11 NMAC
- ☐ Operating and Maintenance Plan - based upon the appropriate requirements of 19.15.17.12 NMAC
- ☐ A List of wells with approved application for permit to drill associated with the pit.
- ☐ Closure Plan (Please complete Boxes 14 through 18, if applicable) - based upon the appropriate requirements of Subsection C of 19.15.17.9 NMAC and 19.15.17.13 NMAC
- ☐ Hydrogeologic Data - based upon the requirements of Paragraph (4) of Subsection B of 19.15.17.9 NMAC
- ☐ Siting Criteria Compliance Demonstrations - based upon the appropriate requirements of 19.15.17.10 NMAC

☐ Previously Approved Design (attach copy of design) API Number: \_\_\_\_\_ or Permit Number: \_\_\_\_\_



12. **Permanent Pits Permit Application Checklist:** Subsection B of 19.15.17.9 NMAC

**Instructions:** Each of the following items must be attached to the application. Please indicate, by a check mark in the box, that the documents are attached.

- ☐ Hydrogeologic Report - based upon the requirements of Paragraph (1) of Subsection B of 19.15.17.9 NMAC
- ☐ Siting Criteria Compliance Demonstrations - based upon the appropriate requirements of 19.15.17.10 NMAC
- ☐ Climatological Factors Assessment
- ☐ Certified Engineering Design Plans - based upon the appropriate requirements of 19.15.17.11 NMAC
- ☐ Dike Protection and Structural Integrity Design - based upon the appropriate requirements of 19.15.17.11 NMAC
- ☐ Leak Detection Design - based upon the appropriate requirements of 19.15.17.11 NMAC
- ☐ Liner Specifications and Compatibility Assessment - based upon the appropriate requirements of 19.15.17.11 NMAC
- ☐ Quality Control/Quality Assurance Construction and Installation Plan
- ☐ Operating and Maintenance Plan - based upon the appropriate requirements of 19.15.17.12 NMAC
- ☐ Freeboard and Overtopping Prevention Plan - based upon the appropriate requirements of 19.15.17.11 NMAC
- ☐ Nuisance or Hazardous Odors, including H<sub>2</sub>S, Prevention Plan
- ☐ Emergency Response Plan
- ☐ Oil Field Waste Stream Characterization
- ☐ Monitoring and Inspection Plan
- ☐ Erosion Control Plan
- ☐ Closure Plan - based upon the appropriate requirements of Subsection C of 19.15.17.9 NMAC and 19.15.17.13 NMAC

13. **Proposed Closure:** 19.15.17.13 NMAC

**Instructions:** Please complete the applicable boxes, Boxes 14 through 18, in regards to the proposed closure plan.

- Type: ☐ Drilling ☐ Workover ☐ Emergency ☐ Cavitation ☐ P&A ☐ Permanent Pit ☒ Below-grade Tank ☐ Multi-well Fluid Management Pit  
☐ Alternative
- Proposed Closure Method: ☒ Waste Excavation and Removal  
☐ Waste Removal (Closed-loop systems only)  
☐ On-site Closure Method (Only for temporary pits and closed-loop systems)  
☐ In-place Burial ☐ On-site Trench Burial  
☐ Alternative Closure Method

14. **Waste Excavation and Removal Closure Plan Checklist:** (19.15.17.13 NMAC) **Instructions:** Each of the following items must be attached to the closure plan. Please indicate, by a check mark in the box, that the documents are attached.

- ☒ Protocols and Procedures - based upon the appropriate requirements of 19.15.17.13 NMAC
- ☒ Confirmation Sampling Plan (if applicable) - based upon the appropriate requirements of Subsection C of 19.15.17.13 NMAC
- ☒ Disposal Facility Name and Permit Number (for liquids, drilling fluids and drill cuttings)
- ☒ Soil Backfill and Cover Design Specifications - based upon the appropriate requirements of Subsection H of 19.15.17.13 NMAC
- ☒ Re-vegetation Plan - based upon the appropriate requirements of Subsection H of 19.15.17.13 NMAC
- ☒ Site Reclamation Plan - based upon the appropriate requirements of Subsection H of 19.15.17.13 NMAC

15. **Siting Criteria (regarding on-site closure methods only):** 19.15.17.10 NMAC

**Instructions:** Each siting criteria requires a demonstration of compliance in the closure plan. Recommendations of acceptable source material are provided below. Requests regarding changes to certain siting criteria require justifications and/or demonstrations of equivalency. Please refer to 19.15.17.10 NMAC for guidance.

Ground water is less than 25 feet below the bottom of the buried waste. - NM Office of the State Engineer - iWATERS database search; USGS; Data obtained from nearby wells	<input type="checkbox"/> Yes <input type="checkbox"/> No <input type="checkbox"/> NA
Ground water is between 25-50 feet below the bottom of the buried waste - NM Office of the State Engineer - iWATERS database search; USGS; Data obtained from nearby wells	<input type="checkbox"/> Yes <input type="checkbox"/> No <input type="checkbox"/> NA
Ground water is more than 100 feet below the bottom of the buried waste. - NM Office of the State Engineer - iWATERS database search; USGS; Data obtained from nearby wells	<input type="checkbox"/> Yes <input type="checkbox"/> No <input type="checkbox"/> NA
Within 100 feet of a continuously flowing watercourse, or 200 feet of any other significant watercourse, lakebed, sinkhole, or playa lake (measured from the ordinary high-water mark). - Topographic map; Visual inspection (certification) of the proposed site	<input type="checkbox"/> Yes <input type="checkbox"/> No
Within 300 feet from a permanent residence, school, hospital, institution, or church in existence at the time of initial application. - Visual inspection (certification) of the proposed site; Aerial photo; Satellite image	<input type="checkbox"/> Yes <input type="checkbox"/> No
Within 300 horizontal feet of a private, domestic fresh water well or spring used for domestic or stock watering purposes, in existence at the time of initial application. - NM Office of the State Engineer - iWATERS database; Visual inspection (certification) of the proposed site	<input type="checkbox"/> Yes <input type="checkbox"/> No
Written confirmation or verification from the municipality; Written approval obtained from the municipality	<input type="checkbox"/> Yes <input type="checkbox"/> No
Within 300 feet of a wetland. US Fish and Wildlife Wetland Identification map; Topographic map; Visual inspection (certification) of the proposed site	<input type="checkbox"/> Yes <input type="checkbox"/> No
Within incorporated municipal boundaries or within a defined municipal fresh water well field covered under a municipal ordinance	



adopted pursuant to NMSA 1978, Section 3-27-3, as amended.

- Written confirmation or verification from the municipality; Written approval obtained from the municipality

☐ Yes ☐ No

Within the area overlying a subsurface mine.

- Written confirmation or verification or map from the NM EMNRD-Mining and Mineral Division

☐ Yes ☐ No

Within an unstable area.

- Engineering measures incorporated into the design; NM Bureau of Geology & Mineral Resources; USGS; NM Geological Society; Topographic map

☐ Yes ☐ No

Within a 100-year floodplain.

- FEMA map

☐ Yes ☐ No

16.

**On-Site Closure Plan Checklist:** (19.15.17.13 NMAC) *Instructions: Each of the following items must be attached to the closure plan. Please indicate, by a check mark in the box, that the documents are attached.*

- ☐ Siting Criteria Compliance Demonstrations - based upon the appropriate requirements of 19.15.17.10 NMAC
- ☐ Proof of Surface Owner Notice - based upon the appropriate requirements of Subsection E of 19.15.17.13 NMAC
- ☐ Construction/Design Plan of Burial Trench (if applicable) based upon the appropriate requirements of Subsection K of 19.15.17.11 NMAC
- ☐ Construction/Design Plan of Temporary Pit (for in-place burial of a drying pad) - based upon the appropriate requirements of 19.15.17.11 NMAC
- ☐ Protocols and Procedures - based upon the appropriate requirements of 19.15.17.13 NMAC
- ☐ Confirmation Sampling Plan (if applicable) - based upon the appropriate requirements of 19.15.17.13 NMAC
- ☐ Waste Material Sampling Plan - based upon the appropriate requirements of 19.15.17.13 NMAC
- ☐ Disposal Facility Name and Permit Number (for liquids, drilling fluids and drill cuttings or in case on-site closure standards cannot be achieved)
- ☐ Soil Cover Design - based upon the appropriate requirements of Subsection H of 19.15.17.13 NMAC
- ☐ Re-vegetation Plan - based upon the appropriate requirements of Subsection H of 19.15.17.13 NMAC
- ☐ Site Reclamation Plan - based upon the appropriate requirements of Subsection H of 19.15.17.13 NMAC

17.

**Operator Application Certification:**

I hereby certify that the information submitted with this application is true, accurate and complete to the best of my knowledge and belief.

Name (Print): Kelsey Christiansen

Title: Environmental Specialist

Signature: Kelsey Christiansen

Date: 9/23/2015

e-mail address: kelsey.christiansen@williams.com

Telephone: 505-632-4606

18.

**OCD Approval:** ☐ Permit Application (including closure plan) ☒ Closure Plan (only) ☐ OCD Conditions (see attachment)

OCD Representative Signature: [Signature]

Approval Date: 10/4/15

Title: Environmental Spec

OCD Permit Number: \_\_\_\_\_

19.

**Closure Report (required within 60 days of closure completion):** 19.15.17.13 NMAC

*Instructions: Operators are required to obtain an approved closure plan prior to implementing any closure activities and submitting the closure report. The closure report is required to be submitted to the division within 60 days of the completion of the closure activities. Please do not complete this section of the form until an approved closure plan has been obtained and the closure activities have been completed.*

☐ Closure Completion Date: \_\_\_\_\_

20.

**Closure Method:**

- ☒ Waste Excavation and Removal ☐ On-Site Closure Method ☐ Alternative Closure Method ☐ Waste Removal (Closed-loop systems only)
- ☐ If different from approved plan, please explain.

21.

**Closure Report Attachment Checklist:** *Instructions: Each of the following items must be attached to the closure report. Please indicate, by a check mark in the box, that the documents are attached.*

- ☐ Proof of Closure Notice (surface owner and division)
- ☐ Proof of Deed Notice (required for on-site closure for private land only)
- ☐ Plot Plan (for on-site closures and temporary pits)
- ☐ Confirmation Sampling Analytical Results (if applicable)
- ☐ Waste Material Sampling Analytical Results (required for on-site closure)
- ☐ Disposal Facility Name and Permit Number
- ☐ Soil Backfilling and Cover Installation
- ☐ Re-vegetation Application Rates and Seeding Technique
- ☐ Site Reclamation (Photo Documentation)

On-site Closure Location: Latitude \_\_\_\_\_ Longitude \_\_\_\_\_ NAD: ☐ 1927 ☐ 1983



**Operator Closure Certification:**

I hereby certify that the information and attachments submitted with this closure report is true, accurate and complete to the best of my knowledge and belief. I also certify that the closure complies with all applicable closure requirements and conditions specified in the approved closure plan.

Name (Print): \_\_\_\_\_ Title: \_\_\_\_\_

Signature: \_\_\_\_\_ Date: \_\_\_\_\_

e-mail address: \_\_\_\_\_ Telephone: \_\_\_\_\_

**SITING CRITERIA  
SUMMARY INFORMATION SHEET  
19.15.17.10 NMAC**



**LT Environmental Inc.**  
2243 Main Avenue, Suite 3  
Durango, Colorado 81301  
T 970-385-1096

**GENERAL INFORMATION**

**Site Name:** 31-6 CDP  
**Pit Type:** Below Grade Tank

**Operator:** Williams Four Corners LLC  
**Date:** 9/23/2015  
**Prepared by:** LT Environmental

**GENERAL SITE LOCATION INFORMATION**

**Geologic Formation:** San Jose Formation  
**Soil Type:** Orlie fine sandy loam  
**Annual Precipitation:** Navajo Dam 12.87"

**SEC:** 01 **TWN:** 30N **RNG:** 06W  
**Latitude:** 36.835452 **Longitude:** -107.420294

**GENERAL SITING CRITERIA**

**Is groundwater less than 25 feet below the bottom of below grade tank?** Greater then 100 feet  
See Figure 3 and attached iWaters Data

**BELOW GRADE TANK SITING CRITERIA**

**Within 100 feet of a continuously flowing watercourse?** NO See Figure 1

The La Jara Canyon arm of Navajo Reservoir is located approximately 4 miles west of the tank.

**Within 100 feet of a significant watercourse?** NO See Figure 1 and Figure 3

A 4th order tributary of La Jara Canyon is located approximately 900 feet north of the tank.

**Within 100 feet of a lakebed, playa lake, or sinkhole?** NO See Figure 2

A stock pond is located approximately 0.62 miles northeast of the tank.

**Within 200 horizontal feet of a spring or a freshwater well used for public or livestock consumption?** NO See Figure 3 and attached iWaters data

Water well (SJ 03556) is located approximately 1.65 miles east of the tank.

**ATTACHED DOCUMENTS:**

Hydrogeologic Report	Figure 4: Municipal Boundaries
Figure 1: Topographic Map	Figure 5: Municipal Boundaries
Figure 2: Aerial Photograph	iWaters Data
Figure 3: Mines, Mills, and Quarries Map	BGT Closure Plan

**ADDITIONAL COMMENTS:**





## 31-6 CDP Hydrogeologic Report for Siting Criteria

### General Geology and Hydrology

The San Juan Basin is a typical Rocky Mountain basin with a gently dipping southern flank and a steeply dipping northern flank. Asymmetrically layered Tertiary sandstones and shales, along with Quaternary alluvial deposits, dominate surficial geology. The below-grade tank is located southeast of the San Juan River and northeast of Navajo Dam, New Mexico. The predominant geologic formation is the San Jose Formation of Tertiary age, which underlies surface soils and is often exposed (Dane and Bachman, 1965). Deposits of Quaternary alluvial and aeolian sands occur prominently near the surface of the area, especially near streams and washes.

Cretaceous and Tertiary sandstones, as well as Quaternary alluvial deposits, serve as the primary aquifers in the San Juan Basin. In most of the area, the San Jose Formation lies at the surface and overlies the Nacimiento Formation. Thickness of the San Jose Formation ranges from 200 feet to 2,700 feet, thickening from west to east across the region of interest. Aquifers occur within the coarser and continuous sandstone bodies of the San Jose Formation, and groundwater within these aquifers flows toward the San Juan River. Little specific hydrogeologic data are available for the San Jose Formation system, but numerous wells and springs are used for stock and domestic supplies (Stone et al., 1983).

The prominent soil type at the below-grade tank are Orlie Fine Sandy Loam, which are defined as soils that exhibit little to no profile development ([www.emnrd.state.nm.us](http://www.emnrd.state.nm.us)). Soils are basically unaltered from their parent rock. Miles of arroyos, washes, and intermittent streams exist as part of the drainage network toward the San Juan River. These features often cut into soil and other unconsolidated materials, contributing to sedimentation downstream. The sudden influx of water from storm events easily erodes the soils that cover the area and prohibits effective recharge to the underlying aquifers.

Dry and arid weather further prohibits active recharge. The climate of the region is arid, averaging just over 12.87 inches of rainfall annually. As is typical of the southwestern United States monsoonal weather patterns, most precipitation falls from August through October. The heaviest rainfall occurs in the summer in isolated, intense cloudbursts. November through June is relatively dry. Snow generally falls from December to mid-February and averages less than one-half inch in depth. However, most recharge occurs during the winter months during snowmelt periods from the upper elevations (Western Regional Climate Center [www.wrcc.dri.edu](http://www.wrcc.dri.edu)). The predominant vegetation are sagebrush and grasses with a more restricted pinon-juniper association (Dick-Peddie, 1993).



### Site-Specific Hydrogeology

Depth to groundwater is estimated to be greater than 100 feet at the below-grade tank. This estimation is based on data from Stone and others (1983), the United States Geological Survey (USGS) *Groundwater Atlas of the United States*. Local topography and proximity to surface hydrologic features are taken into consideration. When available, permitted water well logs and cathodic protection well logs are referenced to infer depth to groundwater near the site.

Beds of water-yielding sandstone are present in the San Jose Formation, which are fluvial in origin and are interbedded with mudstone, siltstone, and shale. "Extensive intertonguing" of different members of this formation is reported. Porous sandstones form the principal aquifers, while relatively impermeable shales and mudstones form confining units between the aquifers. Most aquifers exist within the San Jose Formation at depths greater than 100 feet, and thicknesses of the aquifers can be up to several hundred feet (USGS, *Groundwater Atlas of the United States*; Stone et al., 1983).

The below-grade tank is located in a region incised by canyons, washes, gullies, and arroyos, with Navajo Reservoir being the predominant topographic feature. The mesas are composed of cliff-forming sandstone, and systems of dry washes and their tributaries composed of alluvium are evident on the attached aerial image. The below-grade tank is located at an elevation of approximately 6,428 feet, just north of La Fragua Canyon. An elevation difference between the site and the main channel of La Fragua Canyon of 271 feet.

Groundwater data are sparse in this region; the nearest iWaters data point with similar topographical characteristics is well number SJ 03556 which is located approximately 1.55 miles east-northeast of the site at an elevation of 6,411 feet. Depth to groundwater in the permitted water well is listed as 250 feet below ground surface, indicating that groundwater is greater than 100 feet beneath the below-grade tanks on site. Groundwater data available from the New Mexico State Engineer's iWaters database for water well near the below-grade tank is attached.

### References

Dane, C.H. and G.O. Bachman, 1965, *Geologic Map of New Mexico*: U.S. Geological Survey, 1 sheet, scale 1:500,000.

Dick-Peddie, W.A., 1993, *New Mexico Vegetation – Past, Present and Future*: Albuquerque, New Mexico, University of New Mexico Press, 244 p.

Stone, W.J., F.P. Lyford, P.F. Frenzel, N.H. Mizell, and E.T. Padgett, 1983, *Hydrogeology and Water Resources of the San Juan Basin, New Mexico*: HR-6 New Mexico Bureau of Geology and Mineral Resources Hydrology Report 6.





USGS, Groundwater Atlas of the United States: Arizona, Colorado, New Mexico, Utah, HA 730-C: (<http://www.pubs.usgs.gov>).

Western Region Climate Center, 2008, New Mexico climate summaries: Desert Research Institute at <http://www.wrcc.dri.edu/summary/climsmnm.html>.

New Mexico Energy, Minerals and Natural Resources Department, [www.emnrd.state.nm.us](http://www.emnrd.state.nm.us).





# LEGEND



SITE LOCATION

BGT: BELOW GRADE TANK

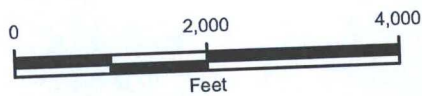


FIGURE 1  
TOPOGRAPHIC MAP  
31-6 CDP BGT #2  
SW/SW SEC 1 T30N R11W

WILLIAMS FOUR CORNERS





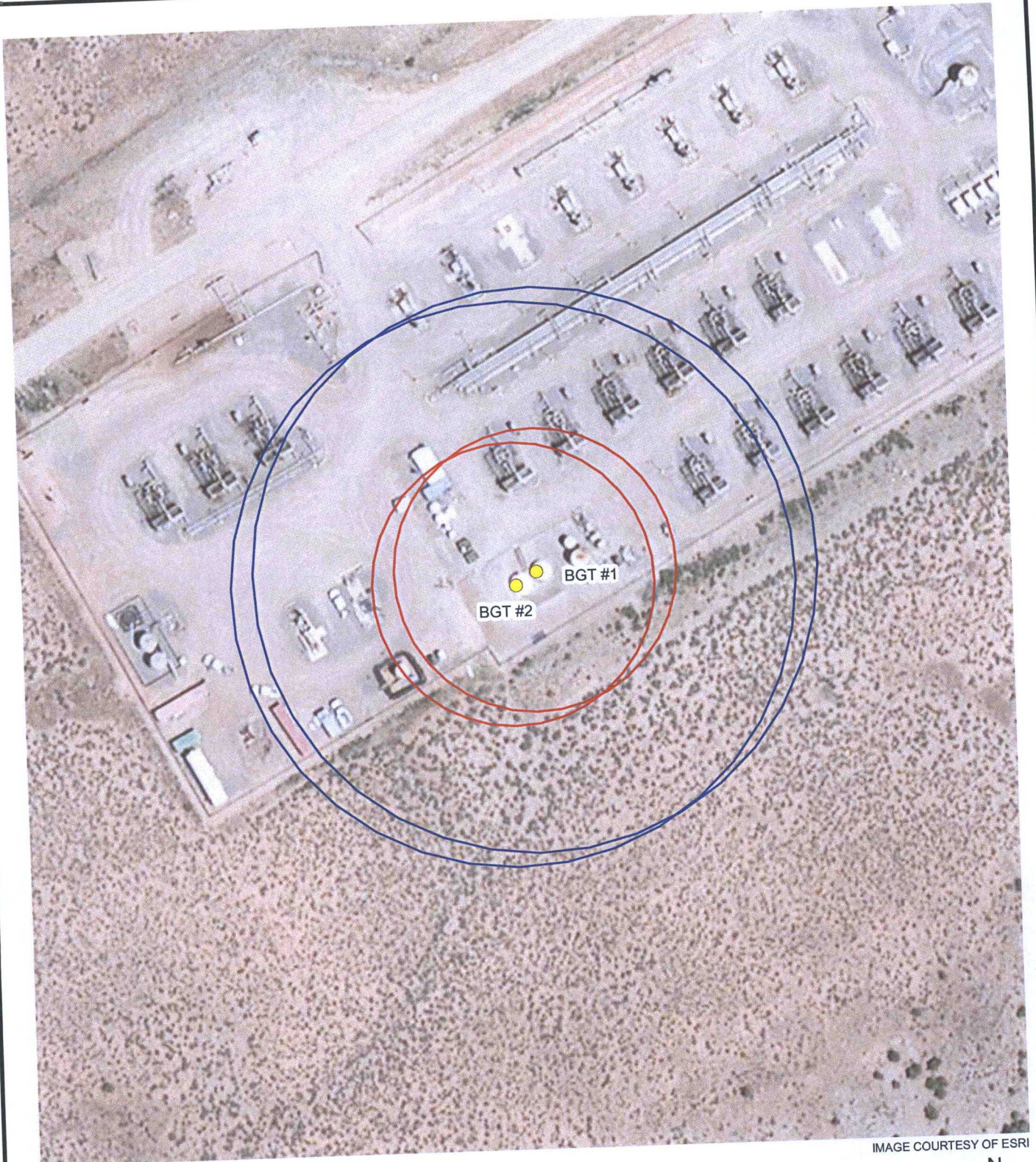
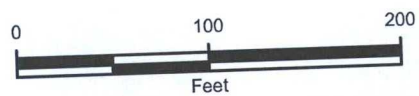


IMAGE COURTESY OF ESRI

# **LEGEND**

- BGT: BELOW GRADE TANK
- 100-FOOT RADIUS
- 200-FOOT RADIUS

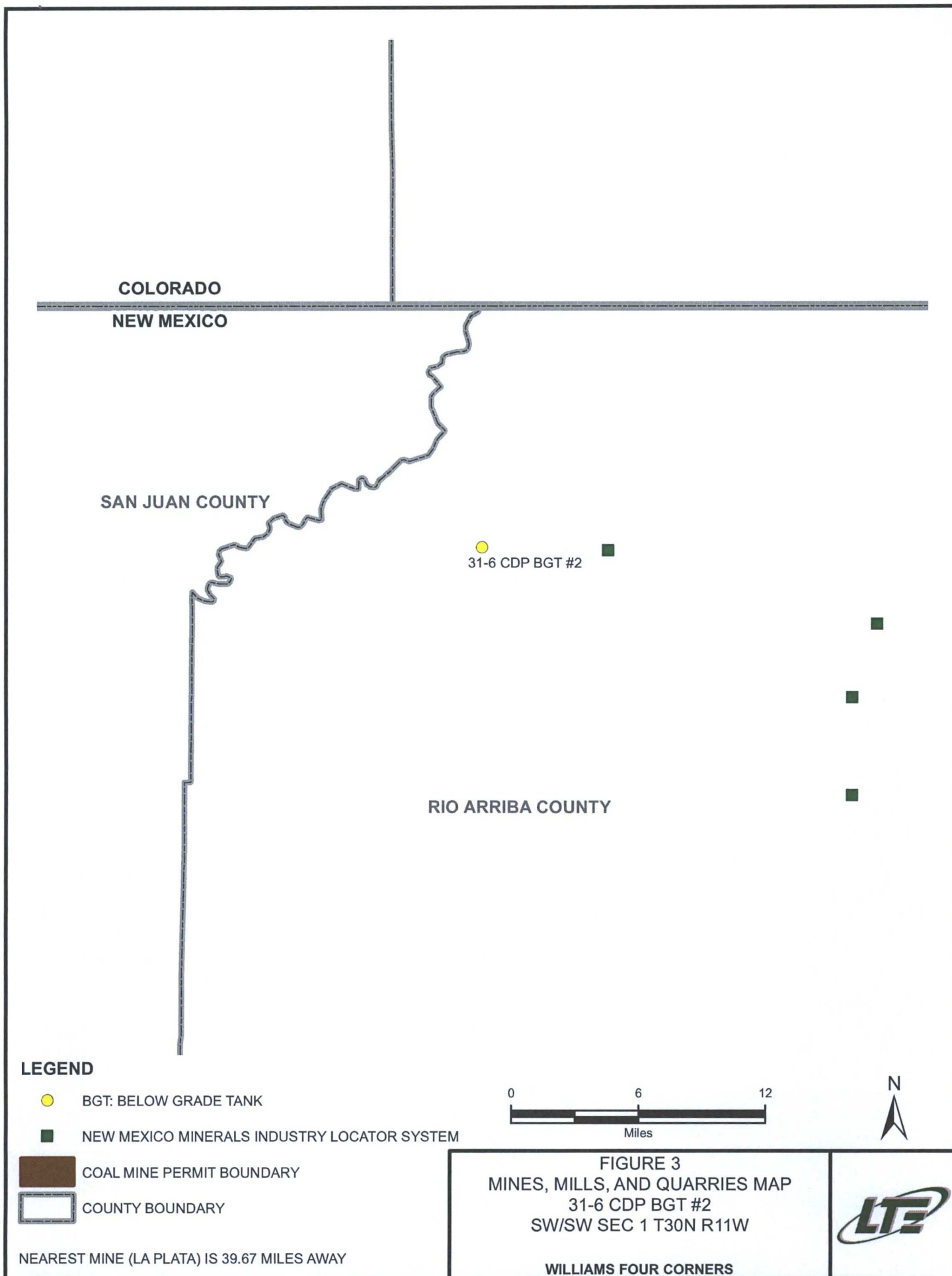


**FIGURE 2**  
**AERIAL PHOTOGRAPHIC MAP**  
 31-6 CDP BGT #2  
 SW/SW SEC 1 T30N R11W

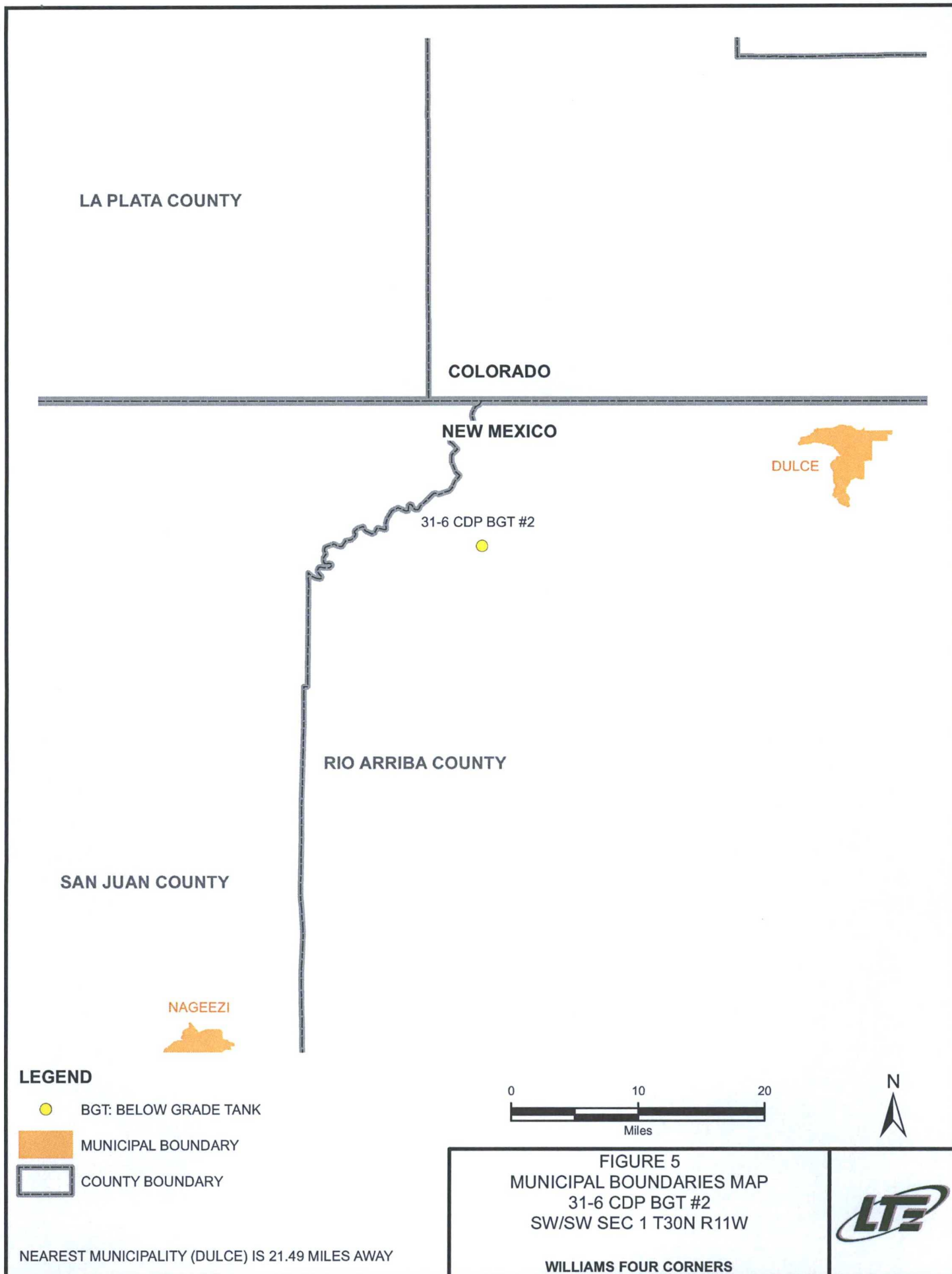
**WILLIAMS FOUR CORNERS**













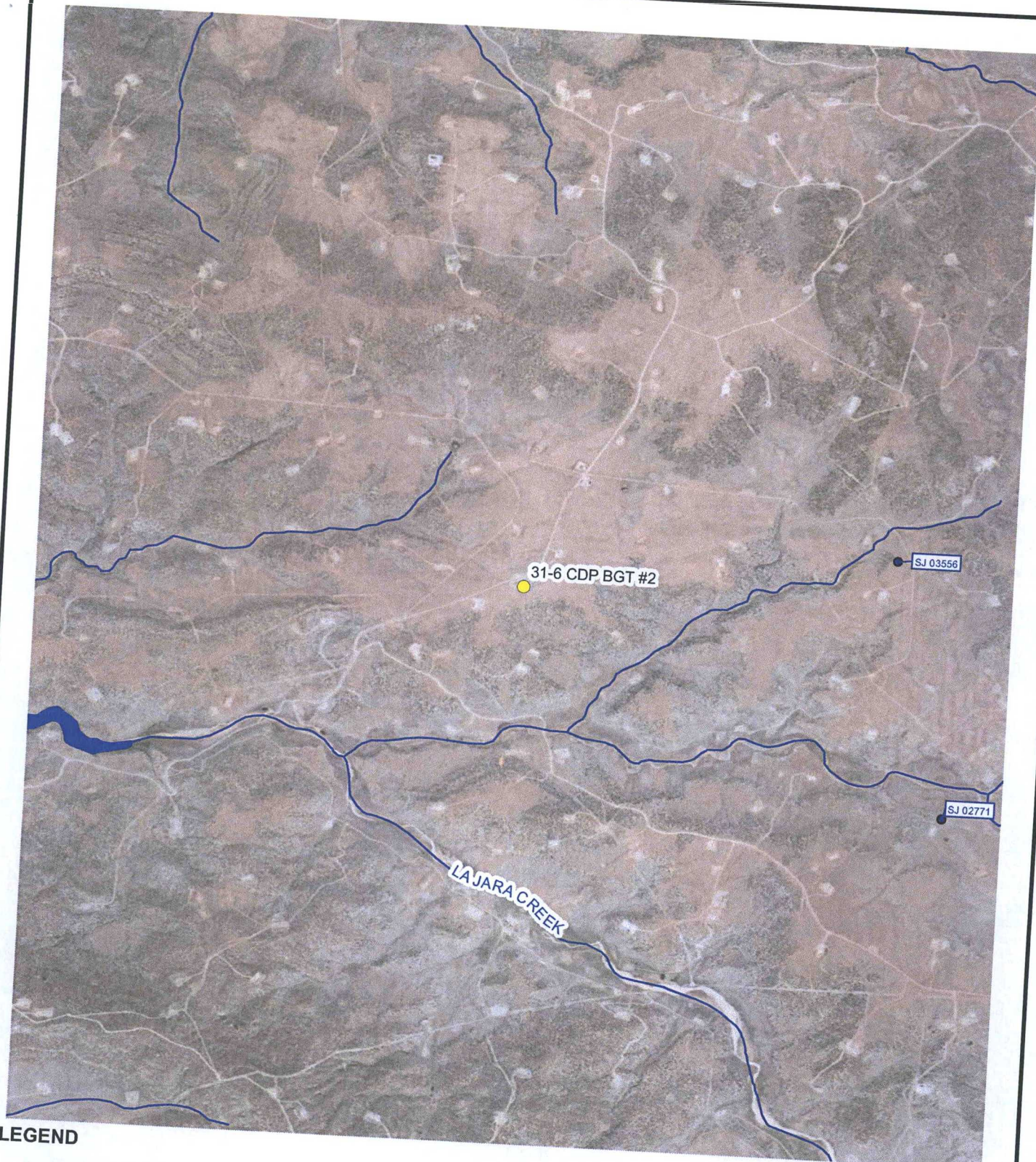
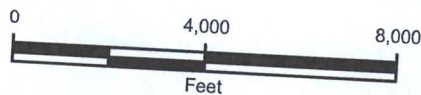


IMAGE COURTESY OF ESRI

**LEGEND**

- WATER WELL
- BGT: BELOW GRADE TANK
- SURFACE WATER



**FIGURE 4**  
**WATER WELL MAP**  
**31-6 CDP BGT #2**  
**SW/SW SEC 1 T30N R11W**

**WILLIAMS FOUR CORNERS**







# New Mexico Office of the State Engineer

## Water Column/Average Depth to Water

(A CLW##### in the  
POD suffix indicates the  
POD has been replaced  
& no longer serves a  
water right file.)

(R=POD has  
been replaced,  
O=orphaned,  
C=the file is

closed) (quarters are 1=NW 2=NE 3=SW 4=SE)  
(quarters are smallest to largest)

(NAD83 UTM in meters)

(In feet)

POD Number	POD Sub-Code	basin	County	Q 64	Q 16	Q 4	Sec	Tws	Rng	X	Y	Depth Well	Depth Water	Water Column
<u>SJ 03556</u>			RA	4	2	4	06	30N	05W	286796	4079673*	450	250	200

Average Depth to Water: **250 feet**

Minimum Depth: **250 feet**

Maximum Depth: **250 feet**

Record Count: 1

PLSS Search:

**Section(s): 6**

**Township: 30N**

**Range: 05W**

\*UTM location was derived from PLSS - see Help

The data is furnished by the NMOSE/ISC and is accepted by the recipient with the expressed understanding that the OSE/ISC make no warranties, expressed or implied, concerning the accuracy, completeness, reliability, usability, or suitability for any particular purpose of the data.



**Williams Four Corners LLC  
Closure Plan - Below Grade Tanks  
San Juan Basin – New Mexico**

**Background**

The following Closure Plan has been developed to satisfy requirements of the "Pit Rule" as defined in Title 19 Chapter 15 Part 17 of the New Mexico Administrative Code (NMAC) and describes the requirements and procedures to be used by Williams Four Corners LLC (Williams) when removing below grade tanks (BGTs). The plan will be used when closing BGT locations owned or operated by Williams.

Certain BGTs targeted under this closure plan were, in some cases, installed subsequent to earthen pit closures and were constructed in conformance with New Mexico Oil Conservation Division (NMOCD) approved criteria. All BGTs have been operating in general compliance with NMOCD regulations developed prior to the new Pit Rule enacted in June 2013.

**Applicability**

This plan shall be implemented when any BGT is closed. The plan shall also be used if any leaking BGT is not retrofitted or modified to comply with applicable design criteria defined in the Pit Rule or when it is determined that continued operation of the BGT represents an imminent danger to fresh water, human health, or the environment. All BGTs with or without completely visible sidewalls, and that do not meet current design standards, shall be closed prior to sale, transfer, or change of Operator or will be retrofitted to meet current design standards.

If there are conditions at a BGT location which prevent or limit adherence to this plan, a separate site specific plan will be developed. Such a plan will be prepared and submitted to the NMOCD for approval and serve as a new, site specific closure plan.

**Description of Work**

Prior to initiating BGT closure work, notification will be made to the appropriate division district office at least 72 hours, but not more than one week, prior to any closure operation. As indicated on the variance page, notifications to NMOCD will be made in writing via email and will include the legal location of the BGT, and the well name / number and American Petroleum Institute (API) number if the BGT is associated with a well. Verbal notifications to the NMOCD will be provided at the request of the division district office.

In addition, the landowner of record (obtained through county tax records) will be notified in advance by certified mail with return receipt at least 72 hours, but not more than one week, prior to any closure operation. Notifications will provide operator identity, and legal location of the BGT, and the well name / number and API number if the BGT is associated with a well. Public entities including the Bureau of Land Management (BLM), State of New Mexico, local government/municipalities, and/or tribal agencies may be



notified via email based on their notification preferences (as indicated on the variance page).

Removal of liquids and sludge from the BGT will commence within 60 days of cessation of operations. The liquids and sludge removed from the BGT will be disposed at a division-approved facility. Removal of the BGT and any equipment associated with the BGT will commence within 6 months of cessation of operations. Williams will remove the BGT and dispose of it in a division-approved facility or recycle, reuse, or reclaim it in a manner that the appropriate division district office approves.

Table 1 provides a summary of waste materials and the facility proposed for disposal or recycling. Williams may utilize other facilities which may be approved by the NMOCD in the future. As such, the selected disposal site will be identified on the closure form (C-144) prepared for each discrete closure action.

**Table 1 - Summary of Waste Materials and Disposal Facilities**

<b>Waste Materials</b>	<b>Disposal Facility</b>
Steel Tank	SJ County Landfill or Steel Recycling
Fiberglass Tank	SJ County or Bondad Landfill * or Re-use
Liner (cleaned – absent soil / sludge)	SJ County or Bondad Landfill
Sludge	Envirotech, IEI, TNT, or Bondad Landfill
Liquids (Water / Hydrocarbons)	Basin Disposal, Key Energy, TNT
Contaminated Soil	Envirotech, IEI, TNT, or Bondad Landfill
Fencing / Miscellaneous	Re-use or scrap

\*The tank must be empty, cut up or shredded and EPA clean

The use of any disposal or recycling facility will be identified on the C-144 form submitted to the NMOCD as part of the closure report. Any and all ancillary equipment related to the tank will also be removed, including any synthetic liner material(s) and fencing. Williams will ensure that liners and liner material will be free of soil and sludge material and disposed of at a NMOCD approved solid waste facility (e.g. San Juan County Landfill or Permitted Colorado Facility).

Steel or fiberglass tanks will be removed and transported to a storage yard where the condition of each tank will be evaluated for recycling, reuse, or disposal. If the tank is not in a condition allowing reuse, it will either be shipped to a permitted recycling facility (for steel tanks) or it will be disposed of at the San Juan County Landfill (NMED Permit SWM-052426) or other NMOCD approved solid waste disposal site. Specific waste acceptance conditions of the landfill could necessitate further actions as appropriate. Such actions include, but may not be limited to, cutting, shredding, or sizing; emptying or cleaning of tanks or liner material, and otherwise those necessary to conform with permit conditions for Subtitle D disposal and conditions identified in 19.15.35.8 NMAC.

After the tank and equipment have been removed, soils beneath the tank will be tested and evaluated to determine if there is hydrocarbon impact or otherwise if a release event has occurred. Specific sampling protocol will follow the description provided in the Pit Rule which calls for a five point composite sample (see Sampling and Lab Analyses section) to include any obvious staining, or when wet or discolored soil exists, or if there is other evidence of contamination will be collected under the liner or BGT. Samples will



be shipped to an off-site environmental testing laboratory for proper analyses. Results will be submitted to the NMOCD on Form C-141. Further sampling may be required if NMOCD determines additional assessment work is necessary.

If there has been no release to underlying soils as demonstrated by soil analyses (i.e. lab results), or if impacts are below closure limits provided in the table below, then the depression (i.e., excavation) will be backfilled with "non-waste containing" fill material. Sampling of the excavated material is detailed in the Sampling and Laboratory Analyses section later in this plan. Depending on site conditions and operating needs, the backfilled area will be reclaimed with prescribed topsoil and reseeded.

Due to the fact that a majority of Williams BGTs are located on active well sites, reclamation efforts may be deferred in order to avoid impact to ongoing lease operations. In this event, the area of the retired BGT will be incorporated into the overall well site reclamation effort with Williams documenting surface owner and lease operator approval of the proposed alternative.

The BGT site will nevertheless be prepared to prevent erosion, and protect fresh water, human health, and the environment. Williams will submit this documentation to the NMOCD for approval.

Reclamation will be performed as early as possible with the goal of matching original conditions or the final land use. Restoration efforts shall incorporate proper contouring as described in the Pit Rule and shall be constructed in a manner to provide dust control, prevent ponding, and minimize erosion, utilizing drainage controls such as water bars and/or silt traps as appropriate. Topsoils and subsoils will be replaced to their original relative positions and contoured so as to achieve erosion control, long-term stability and preservation of surface water flow patterns. Soil cover suitable for vegetative growth will be equivalent to the background thickness of topsoil or a minimum one foot depth (or background thickness whichever is greater). The area will be contoured in a manner blending soil into/with the surrounding grade. Reclamation shall target the location of the BGT along with associated access roads (not used for production operations) and be implemented to ensure a safe and stable condition that blends with the surrounding undisturbed area.

Re-vegetation efforts will conform with NMOCD approved methods and recommendations including seed type and application rates. The reclaimed area will be reseeded in the first favorable growing season following closure of the BGT. Reclamation and revegetation will be considered complete when all ground surface disturbing activities at the site have been completed, and a uniform vegetative cover has been established that reflects a life-form ratio of plus or minus fifty percent (50%) of pre-disturbance levels and a total percent plant cover of at least seventy percent (70%) of pre-disturbance levels, excluding noxious weeds.

Any other obligations imposed by tribal or federal agencies will be adhered to if such obligations provide equal or better protection of fresh water, human health, and the environment. Williams will notify the NMOCD once reclamation and re-vegetation are complete.

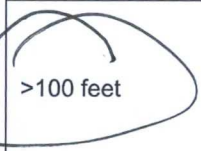


## Sampling and Laboratory Analyses

A minimum five point composite sample shall be collected from the soils beneath the BGT which will include any obvious stained, wet, or discolored soils, or soil showing other evidence of a release. Soil will be placed in clean glass jars and chilled and maintained at 4°C. Samples will be packaged and shipped under United States Environmental Protection Agency (USEPA) Chain-of-Custody protocol to an approved and certified environmental laboratory.

Soil samples collected from the earthen containment (i.e. BGT excavation) will be analyzed by an approved environmental laboratory by the listed test methods or as may be directed by the NMOCD. Table 2 summarizes the constituents of concern (COC), testing methods, and the closure limits defining action levels:

**Table 2 - Summary of COCs, Test Methods, and Closure Limits**

Depth below bottom of pit to groundwater less than 10,000 mg/L TDS	Constituents of Concern	Test Methods	Closure Limits (mg/Kg)**
≤50 feet	Chlorides	EPA 300.0	600
	TPH	EPA SW-846 Method 418.1	100
	GRO + DRO	EPA SW-846 Method 8015M	100
	BTEX	EPA SW-846 Method 8021B or 8260B	50
	Benzene	EPA SW-846 Method 8021B or 8015M	10
51 feet – 100 feet	Chlorides	EPA 300.0	10,000
	TPH	EPA SW-846 Method 418.1	2,500
	GRO + DRO	EPA SW-846 Method 8015M	1,000
	BTEX	EPA SW-846 Method 8021B or 8260B	50
	Benzene	EPA SW-846 Method 8021B or 8015M	10
 >100 feet	Chlorides	EPA 300.0	20,000
	TPH	EPA SW-846 Method 418.1	2,500
	GRO + DRO	EPA SW-846 Method 8015M	1,000
	BTEX	EPA SW-846 Method 8021B or 8260B	50
	Benzene	EPA SW-846 Method 8021B or 8015M	10

\*\* Or background concentration – whichever is greater.

If any contaminant concentration is higher than the parameters listed in Table I of 19.15.17.13 NMAC, the division may require additional delineation upon review of the results and Williams must receive approval before proceeding with closure. If all contaminant concentrations are less than or equal to the parameters listed in Table I of 19.15.17.13 NMAC, then Williams will proceed to backfill the excavation with non-waste containing, uncontaminated, earthen material.

Sampling of any excavated or stockpiled material, if required, shall conform with standard environmental sampling protocol. Samples from excavated materials (excavated to facilitate the BGT removal) will be composite samples comprised of at least five discrete samples from the inside and on the surface of the soil pile. A minimum of one composite will be collected from each 100 cubic yards of soil (i.e. one fraction from each cubic yard). Additional samples may be required at the direction of the

NMOCD. Every effort will be made to collect composite fractions from the inside and outside of the soil pile such that a "representative" sample is analyzed.

Stockpile sampling will be facilitated by utilizing a clean soil probe inserted into the soil pile at least three feet or by turning the soil pile with mechanized equipment to expose new soil. The goal is to collect a sample representative of the "whole". These samples will be handled and packaged as described above and be analyzed by the methods listed in Table 2. Soil with contaminant concentrations at or below the Closure Limits may be returned to the BGT excavation prior to initiating reclamation work.

### **Records and Documentation**

All closure activities will be properly documented and include preparation of Form C-144 which shall be submitted to the NMOCD within 60 days of completing closure tasks. Information to be included in the closure report filing shall include, but not necessarily be limited to, the following:

- Proof of closure notice to NMOCD division and surface owner
- Confirmation sampling and analytical reports (results)
- Disposal facility name and permit information
- Description of capping and reclamation actions (i.e. revegetation rates)
- Photo documentation of site reclamation
- Other information required to complete applicable sections of C-144

As stated above, should conditions at any location necessitate a change to the approach described herein, separate site specific closure details will be provided as an addendum to this plan.