

RECEIVED: 12/04/2017	REVIEWER: M Am	TYPE: CTB	APP NO: PMAM173384230L
-------------------------	-------------------	--------------	---------------------------

ABOVE THIS TABLE FOR OCD DIVISION USE ONLY

NEW MEXICO OIL CONSERVATION DIVISION
 - Geological & Engineering Bureau -
 1220 South St. Francis Drive, Santa Fe, NM 87505

**ADMINISTRATIVE APPLICATION CHECKLIST**

THIS CHECKLIST IS MANDATORY FOR ALL ADMINISTRATIVE APPLICATIONS FOR EXCEPTIONS TO DIVISION RULES AND
 REGULATIONS WHICH REQUIRE PROCESSING AT THE DIVISION LEVEL IN SANTA FE

Applicant: OXY USA INC **OGRID Number:** 16696
Well Name: CORRAL FLY 02-01 STATE #21H **API:** 30-015-44507
Pool: PIERCE CROSSING; BONE SPRING, EAST **Pool Code:** 96473

**SUBMIT ACCURATE AND COMPLETE INFORMATION REQUIRED TO PROCESS THE TYPE OF APPLICATION
 INDICATED BELOW**

1) TYPE OF APPLICATION: Check those which apply for [A]

A. Location - Spacing Unit - Simultaneous Dedication

☐ NSL☐ NSP (PROJECT AREA)☐ NSP (PRORATION UNIT)☐ SD

B. Check one only for [I] or [II]

[I] Commingling - Storage - Measurement

☐ DHC☒ CTB☐ PLC☐ PC☐ OLS☐ OLM

[II] Injection - Disposal - Pressure Increase - Enhanced Oil Recovery

☐ WFX☐ PMX☐ SWD☐ IPI☐ EOR☐ PPR**2) NOTIFICATION REQUIRED TO:** Check those which apply.A. ☐ Offset operators or lease holdersB. ☒ Royalty, overriding royalty owners, revenue ownersC. ☐ Application requires published noticeD. ☒ Notification and/or concurrent approval by SLOE. ☐ Notification and/or concurrent approval by BLMF. ☐ Surface ownerG. ☒ For all of the above, proof of notification or publication is attached, and/or,H. ☐ No notice required**FOR OCD ONLY**

☐ Notice Complete
☐ Application
 Content
 Complete

- 3) CERTIFICATION:** I hereby certify that the information submitted with this application for administrative approval is **accurate** and **complete** to the best of my knowledge. I also understand that **no action** will be taken on this application until the required information and notifications are submitted to the Division.

Note: Statement must be completed by an individual with managerial and/or supervisory capacity.

ROBERT WILSON

Print or Type Name

Signature

12/04/2017

Date

713-985-6991

Phone Number

ROBERT_WILSON@OXY.COM

e-mail Address

APPLICATION FOR LEASE COMMINGLE, OFF-LEASE MEASUREMENT, SALES AND STORAGE

Commingling proposal for Corral Fly 02-01 State Central Tank Battery

OXY USA INC requests approval of a lease commingle at the Corral Fly 02-01 State Central Tank Battery. Off-lease measurement, sales and storage is also requested for the Corral Fly 02-01 State #26H.

The oil production from all of the wells listed below will flow to the Corral Fly 02-01 Central Tank Battery where it will be measured through a LACT (Lat 32.166241, Long -103.957527). Production will then be allocated to each well based on well test data and the number of hours the well was operating in a given month.

Gas production through the Corral Fly 02-01 Central Tank Battery will flow in a similar pattern where total gas production will be measured through an Oxy Check Meter at the CTB site. Production will then be allocated to each well based on well test and the number of hours the well was operating in a given month.

All water will be trucked or pumped to disposal.

The oil and gas meters will be calibrated on a regular basis per API and NMOCD specifications.

WELL NAME	API	Surface Location	Date Online	Oil (BPD)	Gravity	Gas (MSCFD)	BTU/cf	Water (BPD)
POOL: PIERCE CROSSING; BONE SPRING, EAST (96473) - STATE LEASES: VO33611, VA29751, VA29741								
Corral Fly 02-01 State# 21H	30-015-44507	D 4-02-25S-29E	Est. Jan 2018	906	40.4	1821	1240	1753
Corral Fly 02-01 State# 22H	30-015-44508	D 4-02-25S-29E	Est. Feb 2018	872	40.4	2074	1240	3793
Corral Fly 02-01 State# 23H	30-015-44509	D 4-02-25S-29E	Est. Mar 2018	872	40.4	2077	1240	3793
Corral Fly 02-01 State# 24H	30-015-44510	M-02-25S-29E	Est. Feb 2018	872	40.4	2077	1240	3793
Corral Fly 02-01 State# 25H	30-015-44512	M-02-25S-29E	Est. Mar 2018	872	40.4	2080	1240	3793
Corral Fly 02-01 State# 26H	30-015-44513	M-02-25S-29E	Est. Mar 2018	872	40.4	2080	1240	3793

*Production estimates are average of first 6 month volumes

The Corral Fly 02-01 State 21H – 26H production is separated, measured and stored at the Corral Fly 02-01 Central Tank Battery. The battery is equipped with 4 three-phase test separators (6' x 20') and a single main three-phase production separator (10' x 40'). The test separators are equipped with turbine meters for oil and water measurement, and an orifice meter for gas measurement. Oil production is sent from the separators to a heater-treater and vapor recovery tower, then to the oil storage tanks at the central battery before being measured through a LACT Unit and either piped or trucked to sales. Gas production is sent from the three-phase separators through a gas scrubber then to a gas sales meter. Water production is sent from the three-phase separators to water tanks at the central battery, then trucked or pumped to disposal.

The Corral Fly 02-01 State 21H – 26H wells will be tested daily prior to Range 1 of decline, and will be tested at least three times per month during Range 1 of decline. When Range 2 decline is started, the wells will be tested at least twice per month, and will be tested at least once per month during Range 3 of decline, as specified in Hearing Order R-14299.

In addition, the facility can add eight portable, 6' X 20' three-phase test separator kits as needed, for well testing frequency requirements.

Additional Application Components:

The flow of production is shown in detail on the enclosed facility diagrams. Also enclosed is a map detailing the lease boundaries, well and battery locations.

The working interest, royalty interest and overriding royalty interest owners have been notified of this proposal by certified mail (see attached).

Pursuant to Statewide rule 19.15.12.10(C)(4)(g) OXY USA INC requests the option to include additional pools or leases within the defined parameters set forth in the order for future additions.



OXY USA WTP Limited Partnership / OXY USA INC /
OCCIDENTAL PERMIAN LTD
A subsidiary of Occidental Petroleum Corporation

5 Greenway Plaza, Suite 110, Houston, Texas 77046
P.O. Box 4294, Houston, Texas 77210-4294
Direct: 713.366.5106
Sandra_Musallam@oxy.com

RECEIVED OCD

2017 DEC -4 A 1: 27

December 4, 2017

Re: Production of Wells Going to Corral Fly 02-01 State Central Tank Battery

Leases: VO-33611, VA-29751 and VA-29741
Eddy County, New Mexico

Dear Mr. McMillan:

Regarding the submitted commingle application for Corral Fly 02-01 State Central Tank Battery, the production decline of all of the wells going to the battery is in accordance with the production decline presented in Order R-14299.

For questions regarding this application, please contact me at (713) 366-5106.

Respectfully,

OXY USA INC
Sandra Musallam
Regulatory Engineer
Sandra_musallam@oxy.com

District I
1625 N. French Drive, Hobbs, NM 88240
District II
811 S. First St., Artesia, NM 88210
District III
1000 Rio Brazos Road, Aztec, NM 87410
District IV
1220 S. St Francis Dr, Santa Fe, NM
87505

State of New Mexico
Energy, Minerals and Natural Resources Department

Form C-107-B
Revised August 1, 2011

OIL CONSERVATION DIVISION
1220 S. St Francis Drive
Santa Fe, New Mexico 87505

Submit the original
application to the Santa Fe
office with one copy to the
appropriate District Office.

APPLICATION FOR SURFACE COMMINGLING (DIVERSE OWNERSHIP)

OPERATOR NAME: OXY USA INC

OPERATOR ADDRESS: 5 GREENWAY PLAZA SUITE 110, HOUSTON TX 77046

APPLICATION TYPE:

☐ Pool Commingling ☒ Lease Commingling ☐ Pool and Lease Commingling ☐ Off-Lease Storage and Measurement (Only if not Surface Commingled)

LEASE TYPE: ☐ Fee ☒ State ☐ Federal

Is this an Amendment to existing Order? ☐ Yes ☒ No If "Yes", please include the appropriate Order No. _____

Have the Bureau of Land Management (BLM) and State Land office (SLO) been notified in writing of the proposed commingling

☒ Yes ☐ No

(A) POOL COMMINGLING

Please attach sheets with the following information

(1) Pool Names and Codes	Gravities / BTU of Non-Commingled Production	Calculated Gravities / BTU of Commingled Production		Calculated Value of Commingled Production	Volumes

(2) Are any wells producing at top allowables? ☐ Yes ☐ No

(3) Has all interest owners been notified by certified mail of the proposed commingling? ☐ Yes ☐ No.

(4) Measurement type: ☐ Metering ☐ Other (Specify)

(5) Will commingling decrease the value of production? ☐ Yes ☐ No If "yes", describe why commingling should be approved

(B) LEASE COMMINGLING

Please attach sheets with the following information

(1) Pool Name and Code. PIERCE CROSSING;BONE SPRING, EAST (96473)

(2) Is all production from same source of supply? ☒ Yes ☐ No

(3) Has all interest owners been notified by certified mail of the proposed commingling? ☒ Yes ☐ No

(4) Measurement type: ☐ Metering ☒ Other (Specify) WELL TEST

(C) POOL and LEASE COMMINGLING

Please attach sheets with the following information

(1) Complete Sections A and E.

(D) OFF-LEASE STORAGE and MEASUREMENT

Please attach sheets with the following information

(1) Is all production from same source of supply? ☐ Yes ☐ No

(2) Include proof of notice to all interest owners.

(E) ADDITIONAL INFORMATION (for all application types)

Please attach sheets with the following information

(1) A schematic diagram of facility, including legal location.

(2) A plat with lease boundaries showing all well and facility locations. Include lease numbers if Federal or State lands are involved.

(3) Lease Names, Lease and Well Numbers, and API Numbers.

I hereby certify that the information above is true and complete to the best of my knowledge and belief.

SIGNATURE:  TITLE: REGULATORY ENGINEER DATE: 12/04/2017

TYPE OR PRINT NAME: ROBERT WILSON TELEPHONE NO.: 713-985-6991

E-MAIL ADDRESS: ROBERT_WILSON@OXY.COM

APPLICATION FOR LEASE COMMINGLE, OFF-LEASE MEASUREMENT, SALES AND STORAGE

Commingling proposal for Corral Fly 02-01 State Central Tank Battery

OXY USA INC requests approval of a lease commingle at the Corral Fly 02-01 State Central Tank Battery. Off-lease measurement, sales and storage is also requested for the Corral Fly 02-01 State #26H.

The oil production from all of the wells listed below will flow to the Corral Fly 02-01 Central Tank Battery where it will be measured through a LACT (Lat 32.166241, Long -103.957527). Production will then be allocated to each well based on well test data and the number of hours the well was operating in a given month.

Gas production through the Corral Fly 02-01 Central Tank Battery will flow in a similar pattern where total gas production will be measured through an Oxy Check Meter at the CTB site. Production will then be allocated to each well based on well test and the number of hours the well was operating in a given month.

All water will be trucked or pumped to disposal.

The oil and gas meters will be calibrated on a regular basis per API and NMOCD specifications.

WELL NAME	API	Surface Location	Date Online	Oil (BPD)	Gravity	Gas (MSCFD)	BTU/cf	Water (BPD)
POOL: PIERCE CROSSING; BONE SPRING, EAST (96473) - STATE LEASES: VO33611, VA29751, VA29741								
✓ Corral Fly 02-01 State# 21H	30-015-44507	D 4-02-25S-29E	Est. Jan 2018	906	40.4	1821	1240	1753
✓ Corral Fly 02-01 State# 22H	30-015-44508	D 4-02-25S-29E	Est. Feb 2018	872	40.4	2074	1240	3793
✓ Corral Fly 02-01 State# 23H	30-015-44509	D 4-02-25S-29E	Est. Mar 2018	872	40.4	2077	1240	3793
✓ Corral Fly 02-01 State# 24H	30-015-44510	M-02-25S-29E	Est. Feb 2018	872	40.4	2077	1240	3793
✓ Corral Fly 02-01 State# 25H	30-015-44512	M-02-25S-29E	Est. Mar 2018	872	40.4	2080	1240	3793
✓ Corral Fly 02-01 State# 26H	30-015-44513	M-02-25S-29E	Est. Mar 2018	872	40.4	2080	1240	3793

*Production estimates are average of first 6 month volumes

The Corral Fly 02-01 State 21H – 26H production is separated, measured and stored at the Corral Fly 02-01 Central Tank Battery. The battery is equipped with 4 three-phase test separators (6' x 20') and a single main three-phase production separator (10' x 40'). The test separators are equipped with turbine meters for oil and water measurement, and an orifice meter for gas measurement. Oil production is sent from the separators to a heater-treater and vapor recovery tower, then to the oil storage tanks at the central battery before being measured through a LACT Unit and either piped or trucked to sales. Gas production is sent from the three-phase separators through a gas scrubber then to a gas sales meter. Water production is sent from the three-phase separators to water tanks at the central battery, then trucked or pumped to disposal.

The Corral Fly 02-01 State 21H – 26H wells will be tested daily prior to Range 1 of decline, and will be tested at least three times per month during Range 1 of decline. When Range 2 decline is started, the wells will be tested at least twice per month, and will be tested at least once per month during Range 3 of decline, as specified in Hearing Order R-14299.

In addition, the facility can add eight portable, 6' X 20' three-phase test separator kits as needed, for well testing frequency requirements.

Additional Application Components:

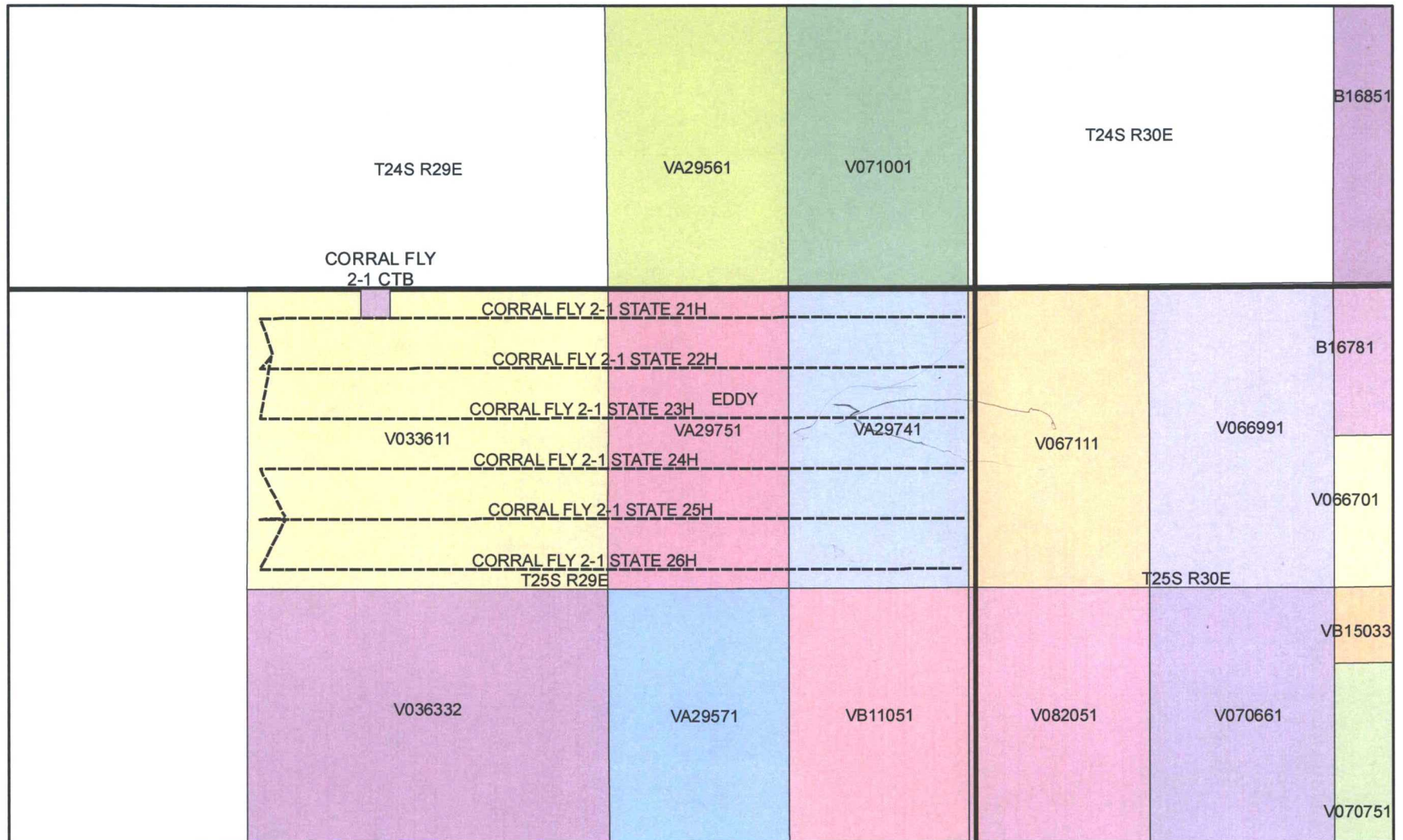
The flow of production is shown in detail on the enclosed facility diagrams. Also enclosed is a map detailing the lease boundaries, well and battery locations.

The working interest, royalty interest and overriding royalty interest owners have been notified of this proposal by certified mail (see attached).

Pursuant to Statewide rule 19.15.12.10(C)(4)(g) OXY USA INC requests the option to include additional pools or leases within the defined parameters set forth in the order for future additions.

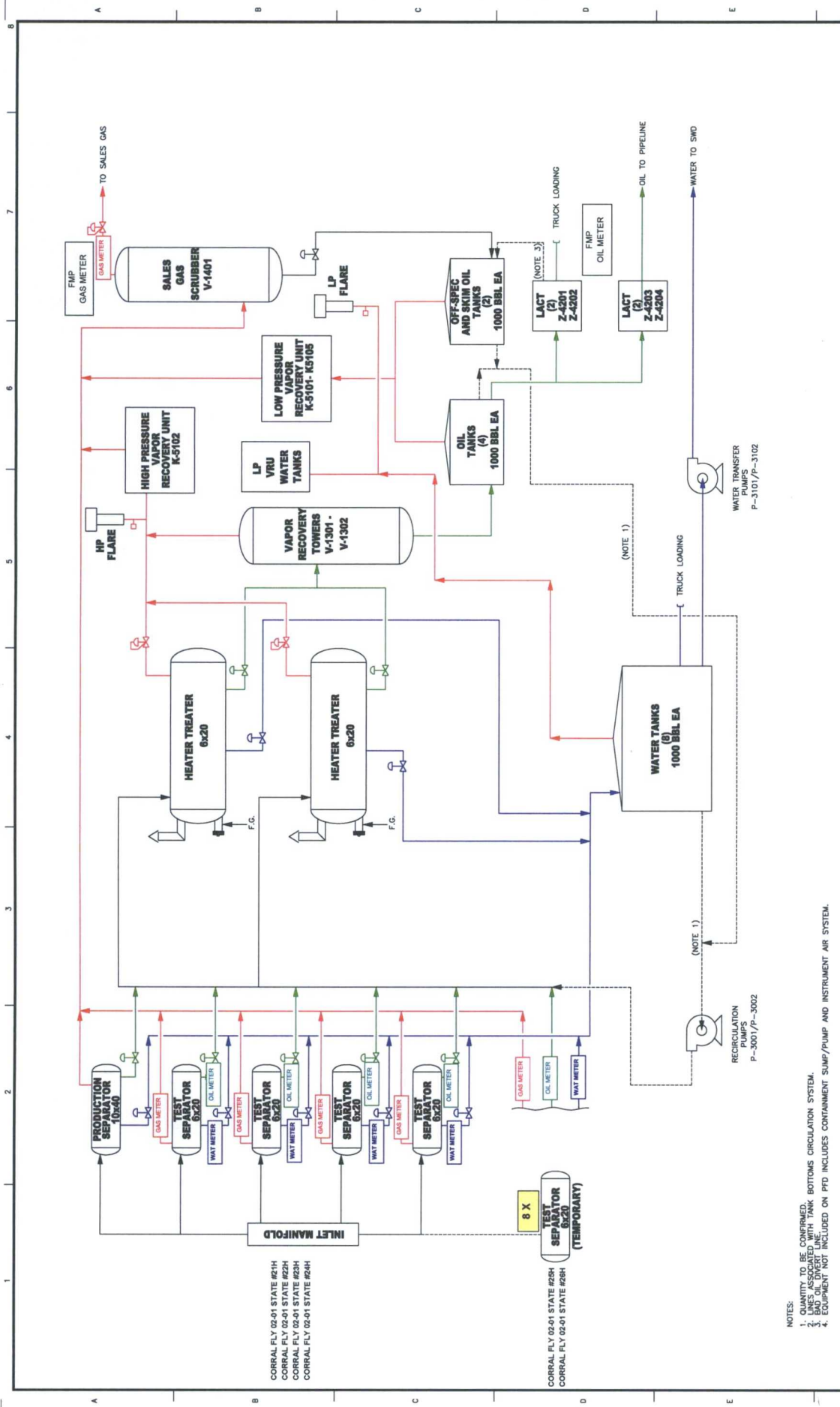
Commingling this production is the most effective means of producing the reserves. OXY USA INC understands the requested approval will not constitute the granting of any right-of-way or construction rights not granted by the lease instrument. These applications will be submitted separately for approval per NMOCD regulations.

CORRAL FLY 2-1 STATE CTB



Legend

- Wells
- Corral Fly 2-1 CTB



NOTES									
IN CASE OF DEVIATIONS A MARKED UP PRINT SHALL BE SENT TO THE PROJECT ENGINEER									
REV	DATE	DRAWN BY	CHECKED BY	DESCRIPTION	DESIGNER PROJECT #	SIGNATURE	DATE	BY	DESCRIPTION
1	11/17/2017	SM	APPROVED						
0	11/17/2017	SM	APPROVED						
PROJECT DRAWING REVISION									
MASTER DRAWING REVISION									
CORRAL FLY 2-1 STATE CTB									
CORRAL FLY 2-1 STATE CTB									
CORRAL FLY 2-1 STATE CTB									
CORRAL FLY 2-1 STATE CTB									
CORRAL FLY 2-1 STATE CTB									
CORRAL FLY 2-1 STATE CTB									
CORRAL FLY 2-1 STATE CTB									
CORRAL FLY 2-1 STATE CTB									
CORRAL FLY 2-1 STATE CTB									
CORRAL FLY 2-1 STATE CTB									
CORRAL FLY 2-1 STATE CTB									
CORRAL FLY 2-1 STATE CTB									
CORRAL FLY 2-1 STATE CTB									
CORRAL FLY 2-1 STATE CTB									
CORRAL FLY 2-1 STATE CTB									
CORRAL FLY 2-1 STATE CTB									
CORRAL FLY 2-1 STATE CTB									
CORRAL FLY 2-1 STATE CTB									
CORRAL FLY 2-1 STATE CTB									
CORRAL FLY 2-1 STATE CTB									
CORRAL FLY 2-1 STATE CTB									
CORRAL FLY 2-1 STATE CTB									
CORRAL FLY 2-1 STATE CTB									
CORRAL FLY 2-1 STATE CTB									
CORRAL FLY 2-1 STATE CTB									
CORRAL FLY 2-1 STATE CTB									
CORRAL FLY 2-1 STATE CTB									
CORRAL FLY 2-1 STATE CTB									
CORRAL FLY 2-1 STATE CTB									
CORRAL FLY 2-1 STATE CTB									
CORRAL FLY 2-1 STATE CTB									
CORRAL FLY 2-1 STATE CTB									
CORRAL FLY 2-1 STATE CTB									
CORRAL FLY 2-1 STATE CTB									
CORRAL FLY 2-1 STATE CTB									
CORRAL FLY 2-1 STATE CTB									
CORRAL FLY 2-1 STATE CTB									
CORRAL FLY 2-1 STATE CTB									
CORRAL FLY 2-1 STATE CTB									
CORRAL FLY 2-1 STATE CTB									
CORRAL FLY 2-1 STATE CTB									
CORRAL FLY 2-1 STATE CTB									
CORRAL FLY 2-1 STATE CTB									
CORRAL FLY 2-1 STATE CTB									
CORRAL FLY 2-1 STATE CTB									
CORRAL FLY 2-1 STATE CTB									
CORRAL FLY 2-1 STATE CTB									
CORRAL FLY 2-1 STATE CTB									
CORRAL FLY 2-1 STATE CTB									
CORRAL FLY 2-1 STATE CTB									
CORRAL FLY 2-1 STATE CTB									
CORRAL FLY 2-1 STATE CTB									
CORRAL FLY 2-1 STATE CTB									
CORRAL FLY 2-1 STATE CTB									
CORRAL FLY 2-1 STATE CTB									
CORRAL FLY 2-1 STATE CTB									
CORRAL FLY 2-1 STATE CTB									
CORRAL FLY 2-1 STATE CTB									
CORRAL FLY 2-1 STATE CTB									
CORRAL FLY 2-1 STATE CTB									
CORRAL FLY 2-1 STATE CTB									
CORRAL FLY 2-1 STATE CTB									
CORRAL FLY 2-1 STATE CTB									
CORRAL FLY 2-1 STATE CTB									
CORRAL FLY 2-1 STATE CTB									
CORRAL FLY 2-1 STATE CTB									
CORRAL FLY 2-1 STATE CTB									
CORRAL FLY 2-1 STATE CTB									
CORRAL FLY 2-1 STATE CTB									
CORRAL FLY 2-1 STATE CTB									
CORRAL FLY 2-1 STATE CTB									
CORRAL FLY 2-1 STATE CTB									
CORRAL FLY 2-1 STATE CTB									
CORRAL FLY 2-1 STATE CTB									
CORRAL FLY 2-1 STATE CTB									
CORRAL FLY 2-1 STATE CTB									
CORRAL FLY 2-1 STATE CTB									
CORRAL FLY 2-1 STATE CTB									
CORRAL FLY 2-1 STATE CTB									
CORRAL FLY 2-1 STATE CTB									
CORRAL FLY 2-1 STATE CTB									
CORRAL FLY 2-1 STATE CTB									
CORRAL FLY 2-1 STATE CTB									
CORRAL FLY 2-1 STATE CTB									
CORRAL FLY 2-1 STATE CTB									
CORRAL FLY 2-1 STATE CTB									
CORRAL FLY 2-1 STATE CTB									
CORRAL FLY 2-1 STATE CTB									
CORRAL FLY 2-1 STATE CTB									
CORRAL FLY 2-1 STATE CTB									
CORRAL FLY 2-1 STATE CTB									
CORRAL FLY 2-1 STATE CTB									
CORRAL FLY 2-1 STATE CTB									
CORRAL FLY 2-1 STATE CTB									
CORRAL FLY 2-1 STATE CTB									
CORRAL FLY 2-1 STATE CTB									
CORRAL FLY 2-1 STATE CTB									
CORRAL FLY 2-1 STATE CTB									
CORRAL FLY 2-1 STATE CTB									
CORRAL FLY 2-1 STATE CTB									
CORRAL FLY 2-1 STATE CTB									
CORRAL FLY 2-1 STATE CTB									
CORRAL FLY 2-1 STATE CTB									
CORRAL FLY 2-1 STATE CTB									
CORRAL FLY 2-1 STATE CTB									
CORRAL FLY 2-1 STATE CTB									
CORRAL FLY 2-1 STATE CTB									
CORRAL FLY 2-1 STATE CTB									
CORRAL FLY 2-1 STATE CTB									
CORRAL FLY 2-1 STATE CTB									
CORRAL FLY 2-1 STATE CTB									
CORRAL FLY 2-1 STATE CTB									
CORRAL FLY 2-1 STATE CTB									
CORRAL FLY 2-1 STATE CTB									
CORRAL FLY 2-1 STATE CTB									
CORRAL FLY 2-1 STATE CTB									
CORRAL FLY 2-1 STATE CTB									
CORRAL FLY 2-1 STATE CTB									
CORRAL FLY 2-1 STATE CTB									
CORRAL FLY 2-1 STATE CTB									
CORRAL FLY 2-1 STATE CTB									
CORRAL FLY 2-1 STATE CTB									
CORRAL FLY 2-1 STATE CTB									
CORRAL FLY 2-1 STATE CTB									
CORRAL FLY 2-1 STATE CTB									
CORRAL FLY 2-1 STATE CTB									
CORRAL FLY 2-1 STATE CTB									
CORRAL FLY 2-1 STATE CTB									
CORRAL FLY 2-1 STATE CTB									
CORRAL FLY 2-1 STATE CTB									
CORRAL FLY 2-1 STATE CTB									
CORRAL FLY 2-1 STATE CTB									
CORRAL FLY 2-1 STATE CTB									
CORRAL FLY 2-1 STATE CTB									
CORRAL FLY 2-1 STATE CTB									
CORRAL FLY 2-1 STATE CTB									
CORRAL FLY 2-1 STATE CTB									
CORRAL FLY 2-1 STATE CTB									
CORRAL FLY 2-1 STATE CTB									
CORRAL FLY 2-1 STATE CTB									
CORRAL FLY 2-1 STATE CTB									
CORRAL FLY 2-1 STATE CTB									
CORRAL FLY 2-1 STATE CTB									
CORRAL FLY 2-1 STATE CTB									
CORRAL FLY 2-1 STATE CTB									
CORRAL FLY 2-1 STATE CTB									
CORRAL FLY 2-1 STATE CTB									
CORRAL FLY 2-1 STATE CTB									
CORRAL FLY 2-1 STATE CTB									
CORRAL FLY 2-1 STATE CTB									
CORRAL FLY 2-1 STATE CTB									
CORRAL FLY 2-1 STATE CTB									
CORRAL FLY 2-1 STATE CTB									
CORRAL FLY 2-1 STATE CTB									
CORRAL FLY 2-1 STATE CTB									
CORRAL FLY 2-1 STATE CTB									
CORRAL FLY 2-1 STATE CTB									
CORRAL FLY 2-1 STATE CTB									
CORRAL FLY 2-1 STATE CTB									
CORRAL FLY 2-1 STATE CTB									
CORRAL FLY 2-1 STATE CTB									
CORRAL FLY 2-1 STATE CTB									
CORRAL FLY 2-1 STATE CTB									
CORRAL FLY 2-1 STATE CTB									
CORRAL FLY 2-1 STATE CTB									
CORRAL FLY 2-1 STATE CTB									
CORRAL FLY 2-1 STATE CTB									
CORRAL FLY 2-1 STATE CTB									
CORRAL FLY 2-1 STATE CTB									
CORRAL FLY 2-1 STATE CTB									
CORRAL FLY 2-1 STATE CTB									
CORRAL FLY 2-1 STATE CTB									
CORRAL FLY 2-1 STATE CTB									
CORRAL FLY 2-1 STATE CTB									
CORRAL FLY 2-1 STATE CTB									
CORRAL FLY 2-1 STATE CTB									
CORRAL FLY 2-1 STATE CTB									
CORRAL FLY 2-1 STATE CTB									
CORRAL FLY 2-1 STATE CTB									
CORRAL FLY 2-1 STATE CTB									
CORRAL FLY 2-1 STATE CTB									
CORRAL FLY 2-1 STATE CTB									
CORRAL FLY 2-1 STATE CTB									
CORRAL FLY 2-1 STATE CTB									
CORRAL FLY 2-1 STATE CTB									
CORRAL FLY 2-1 STATE CTB									
CORRAL FLY 2-1 STATE CTB									
CORRAL FLY 2-1 STATE CTB									
CORRAL FLY 2-1 STATE CTB									
CORRAL FLY 2-1 STATE CTB									
CORRAL FLY 2-1 STATE CTB									
CORRAL FLY 2-1 STATE CTB									
CORRAL FLY 2-1 STATE CTB									
CORRAL FLY 2-1 STATE CTB									
CORRAL FLY 2-1 STATE CTB									
CORRAL FLY 2-1 STATE CTB									
CORRAL FLY 2-1 STATE CTB									
CORRAL FLY 2-1 STATE CTB									
CORRAL FLY 2-1 STATE CTB									
CORRAL FLY 2-1 STATE CTB									
CORRAL FLY 2-1 STATE CTB									
CORRAL FLY 2-1 STATE CTB									
CORRAL FLY 2-1 STATE CTB									
CORRAL FLY 2-1 STATE CTB									
CORRAL FLY 2-1 STATE CTB									
CORRAL FLY 2-1 STATE CTB									
CORRAL FLY 2-1 STATE CTB									
CORRAL FLY 2-1 STATE CTB									
CORRAL FLY 2-1 STATE CTB									
CORRAL FLY 2-1 STATE CTB									
CORRAL FLY 2-1 STATE CTB									

District I
1623 N French Dr., Hobbs, NM 88240
Phone: (575) 393-6161 Fax: (575) 393-6720
District II
611 S. First St., Artesia, NM 88210
Phone: (575) 748-1283 Fax: (575) 748-9720
District III
1000 Rio Arriba Road, Aztec, NM 87410
Phone: (505) 334-6178 Fax: (505) 334-6170
District IV
1220 S. St. Francis Dr., Santa Fe, NM 87505
Phone: (505) 476-3460 Fax: (505) 476-3462

State of New Mexico
Energy, Minerals & Natural Resources Department
OIL CONSERVATION DIVISION
1220 South St. Francis Dr.
Santa Fe, NM 87505

Form C-102
Revised August 1, 2011
Submit one copy to appropriate
District Office

☐ AMENDED REPORT

WELL LOCATION AND ACREAGE DEDICATION PLAT

API Number 30-015-44507		Pool Code 96473	Pool Name Pierce Crossing Bone Spring, East
Property Code 319797	Property Name CORRAL FLY "02-01" STATE		Well Number 21H
OGRID No. 16696	Operator Name OXY USA INC.		Elevation 2996.6'

Surface Location

UL or lot no.	Section	Township	Range	Lot Idn	Feet from the	North/South line	Feet from the	East/West line	County
4	2	25 SOUTH	29 EAST, N.M.P.M.		1230'	NORTH	120'	WEST	EDDY

Bottom Hole Location If Different From Surface

UL or lot no.	Section	Township	Range	Lot Idn	Feet from the	North/South line	Feet from the	East/West line	County
1	1	25 SOUTH	29 EAST, N.M.P.M.		470'	NORTH	180'	EAST	EDDY

Dedicated Acres	Joint or Infill	Consolidation Code	Order No.
318.88	2		

No allowable will be assigned to this completion until all interests have been consolidated or a non-standard unit has been approved by the division.

<p>TOP PERF. NEW MEXICO EAST NAD 1983 Y=424048.45 US FT X=656056.69 US FT LAT.: N 32.1652441° LONG.: W 103.9625919°</p> <p>KICK OFF POINT NEW MEXICO EAST NAD 1983 Y=424046.93 US FT X=655766.69 US FT LAT.: N 32.1652427° LONG.: W 103.9635291°</p> <p>BOTTOM PERF NEW MEXICO EAST NAD 1983 Y=424100.12 US FT X=655969.64 US FT LAT.: N 32.1652883° LONG.: W 103.9305559°</p> <p>BOTTOM HOLE LOCATION NEW MEXICO EAST NAD 1983 Y=424100.95 US FT X=656129.64 US FT LAT.: N 32.1652889° LONG.: W 103.9300388°</p> <p>GRID AZ = 89°42'05" 10363.09' IN ALL</p> <p>GRID AZ = 354°42'53" 762.98'</p> <p>SURFACE LOCATION NEW MEXICO EAST NAD 1983 Y=423287.19 US FT X=655836.97 US FT LAT.: N 32.1631536° LONG.: W 103.9633104°</p>	<p>OPERATOR CERTIFICATION</p> <p>I hereby certify that the information contained herein is true and complete to the best of my knowledge and belief, and that this organization either owns a working interest or undivided mineral interest in the land including the proposed bottom hole location or has a right to drill this well at this location pursuant to a contract with an owner of such a mineral or working interest, or to a voluntary pooling agreement or a compulsory pooling order heretofore entered by the division.</p> <p><i>David Stewart</i> 10/23/17 Signature Date David Stewart Sr. Reg. Ado. Printed Name David_Stewart@oxy.com E-mail Address</p> <p>SURVEYOR CERTIFICATION</p> <p>I hereby certify that the well location shown on this plat was plotted from field notes of actual surveys made by me or under my supervision and that the same is true and correct to the best of my belief.</p> <p>15079 JULY 25, 2017 Date of Survey Signature and Seal of Professional Surveyor Certificate Number 15079 9/20/2017</p> <p>WOF 170725WL-a (NA)</p>
--	---

District I
1625 N. French Dr., Hobbs, NM 88240
Phone: (575) 793-6161 Fax: (575) 793-0720
District II
811 S. First St., Artesia, NM 88210
Phone: (575) 748-1283 Fax: (575) 748-9720
District III
1000 Rio Brazos Road, Aztec, NM 87410
Phone: (505) 334-6178 Fax: (505) 334-6170
District IV
1220 S. St. Francis Dr., Santa Fe, NM 87505
Phone: (505) 476-3460 Fax: (505) 476-3462

State of New Mexico **NM OIL CONSERVATION**
Energy, Minerals & Natural Resources Department
OIL CONSERVATION DIVISION
1220 South St. Francis Dr. OCT 30 2017
Santa Fe, NM 87505

Form C-102
Revised August 1, 2011
Submit one copy to appropriate
District Office

RECEIVED

☐ AMENDED REPORT

WELL LOCATION AND ACREAGE DEDICATION PLAT

API Number 30-015-4450B	Pool Code 96473	Pool Name Pierce Crossing Base Spring, East
Property Code 319797	Property Name CORRAL FLY "02-01" STATE	Well Number 22H
OGRID No. 16696	Operator Name OXY USA INC.	Elevation 2995.7'

Surface Location

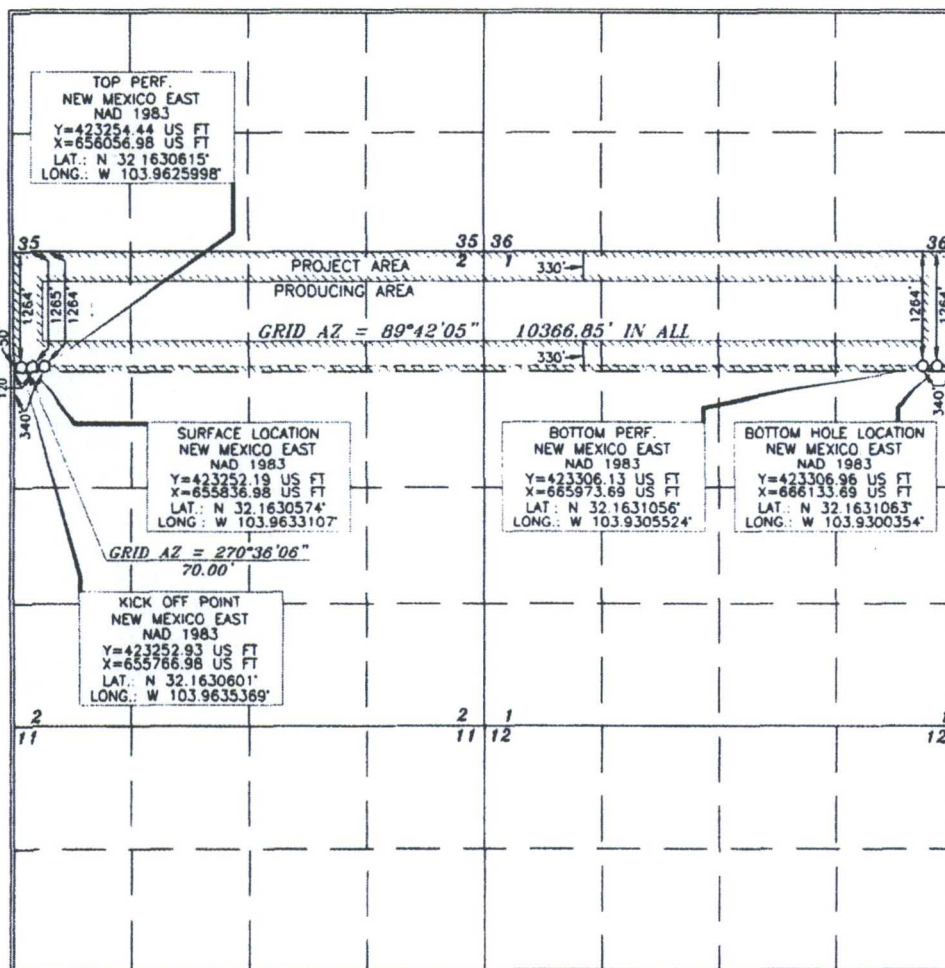
U/L or lot no.	Section	Township	Range	Lot Idn	Feet from the	North/South line	Feet from the	East/West line	County
4	2	25 SOUTH	29 EAST, N.M.P.M.		1265'	NORTH	120'	WEST	EDDY

Bottom Hole Location If Different From Surface

U/L or lot no.	Section	Township	Range	Lot Idn	Feet from the	North/South line	Feet from the	East/West line	County
1	1	25 SOUTH	29 EAST, N.M.P.M.		1264'	NORTH	180'	EAST	EDDY

Dedicated Acres 318.88	Joint or Infill Y	Consolidation Code	Order No. NSL will be filed
----------------------------------	-----------------------------	--------------------	---------------------------------------

No allowable will be assigned to this completion until all interests have been consolidated or a non-standard unit has been approved by the division.



OPERATOR CERTIFICATION

I hereby certify that the information contained herein is true and complete to the best of my knowledge and belief, and that this organization either owns a working interest or undivided mineral interest in the land including the proposed bottom hole location or has a right to drill this well at this location pursuant to a contract with an owner of such a mineral or working interest, or to a voluntary pooling agreement or a compulsory pooling order heretofore entered by the division.

Signature: **David Stewart** Date: **10/23/17**
Printed Name: **David Stewart SR. Reg. Adv.**
E-mail Address: **David_Stewart@oxy.com**

SURVEYOR CERTIFICATION

I hereby certify that the well location shown on this plat was plotted from field notes or actual surveys made by me or under my supervision, and that the same is true and correct to the best of my belief.

Date of Survey: **JULY 25, 2017**
Signature and Seal of Professional Surveyor: **Tracy Alford**
Certificate Number: **15079**

WO# 170725WL-b (KA)

District I
1625 N. French Dr., Hobbs, NM 88240
Phone: (575) 393-6161 Fax: (575) 393-0720
District II
811 S. First St., Artesia, NM 88210
Phone: (575) 748-1283 Fax: (575) 748-9720
District III
1000 Rio Brazos Road, Aztec, NM 87410
Phone: (505) 334-6178 Fax: (505) 334-6170
District IV
1220 S. St. Francis Dr., Santa Fe, NM 87505
Phone: (505) 476-3460 Fax: (505) 476-3462

NM OIL CONSERVATION
State of New Mexico
Energy, Minerals & Natural Resources Department
OIL CONSERVATION DIVISION
1220 South St. Francis Dr.
Santa Fe, NM 87505

ARTESIA DISTRICT

001-180-12017

RECEIVED

Form C-102
Revised August 1, 2011
Submit one copy to appropriate
District Office

☐ AMENDED REPORT

WELL LOCATION AND ACREAGE DEDICATION PLAT

API Number 30-015-44509	Pool Code 96473	Pool Name Piñon Crossing Bone Springs East
Property Code 319797	Property Name CORRAL FLY "02-01" STATE	Well Number 23H
OGRID No. 16696	Operator Name OXY USA INC.	Elevation 2995.5'

Surface Location

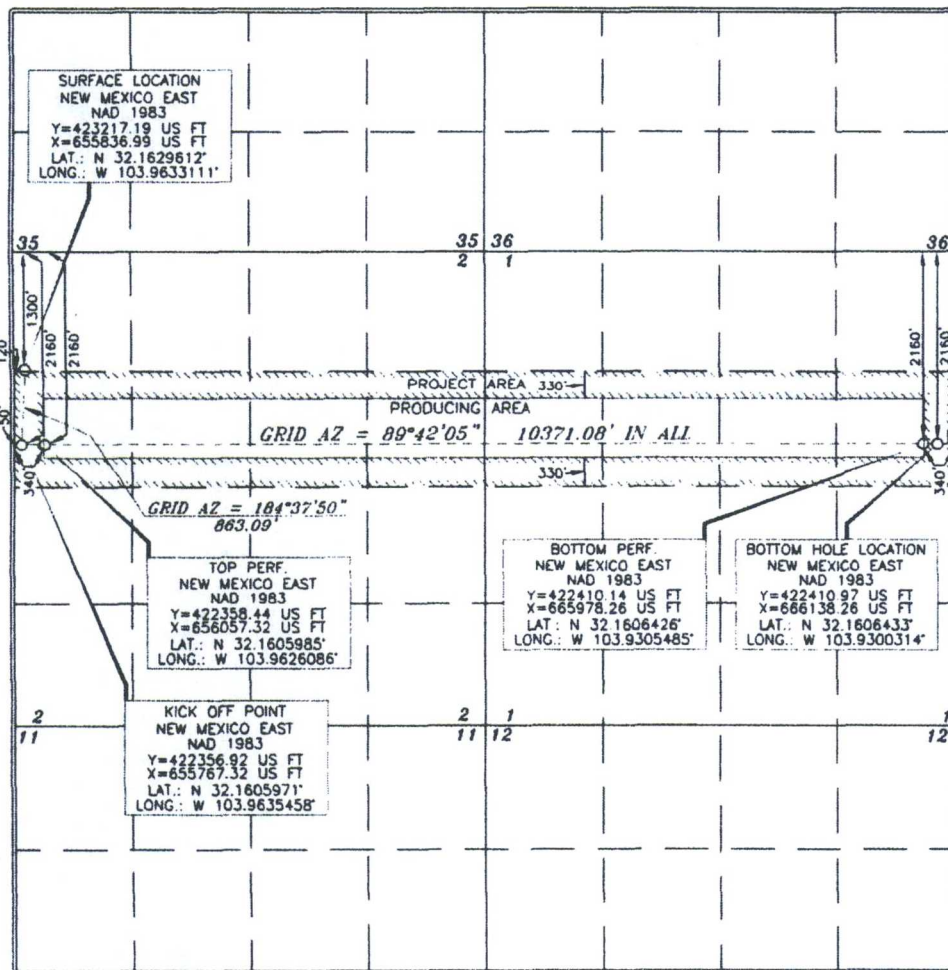
UT. or lot no.	Section	Township	Range	Lot Idn	Feet from the	North/South line	Feet from the	East/West line	County
4	2	25 SOUTH	29 EAST, N.M.P.M.		1300'	NORTH	120'	WEST	EDDY

Bottom Hole Location If Different From Surface

UT. or lot no.	Section	Township	Range	Lot Idn	Feet from the	North/South line	Feet from the	East/West line	County
H	1	25 SOUTH	29 EAST, N.M.P.M.		2160'	NORTH	180'	EAST	EDDY

Dedicated Acres	Joint or Infill	Consolidation Code	Order No.
320	Y		

No allowable will be assigned to this completion until all interests have been consolidated or a non-standard unit has been approved by the division.



OPERATOR CERTIFICATION

I hereby certify that the information contained herein is true and complete to the best of my knowledge and belief, and that this organization either owns a working interest or undivided mineral interest in the land including the proposed bottom hole location or has a right to drill this well at this location pursuant to a contract with an owner of such a mineral or working interest, or to a voluntary pooling agreement or a compulsory pooling order

hereby entered by the division

Signature: *David Stewart* Date: **10/23/17**

Printed Name: **David Stewart Sr. Reg. Asst.**

E-mail Address: **David.Stewart@oxy.com**

SURVEYOR CERTIFICATION

I hereby certify that the well location shown on this plat was plotted from field notes of actual surveys made by me or under my supervision, and that the same is true and correct to the best of my belief.

Date of Survey: **JULY 25, 2017**

Signature and Seal: *Terry J. Asel*
Professional Surveyor

Certificate Number: **15079**

WO# 170725WL-C (KA)

District I
1625 N. French Dr., Hobbs, NM 88240
Phone: (575) 393-6161 Fax: (575) 393-0720
District II
817 S. First St., Artesia, NM 88210
Phone: (575) 748-1383 Fax: (575) 748-9720
District III
1000 Rio Brazos Road, Aztec, NM 87410
Phone: (505) 334-6178 Fax: (505) 334-6170
District IV
1220 S. St. Francis Dr., Santa Fe, NM 87505
Phone: (505) 476-3460 Fax: (505) 476-3462

State of New Mexico
Energy, Minerals & Natural Resources Department
NM OIL CONSERVATION
OIL CONSERVATION DIVISION
1220 South St. Francis Dr. OCT 30 2017
Santa Fe, NM 87505

Form C-102
Revised August 1, 2011
Submit one copy to appropriate
District Office

☐ AMENDED REPORT

RECEIVED

WELL LOCATION AND ACREAGE DEDICATION PLAT

API Number 30-015- 44510	Pool Code 96473	Pool Name Pierce Crossing; Bone Spring, East
Property Code 319797	Property Name CORRAL FLY "02-01" STATE	Well Number 24H
OGRID No. 16696	Operator Name OXY USA INC.	Elevation 3026.4'

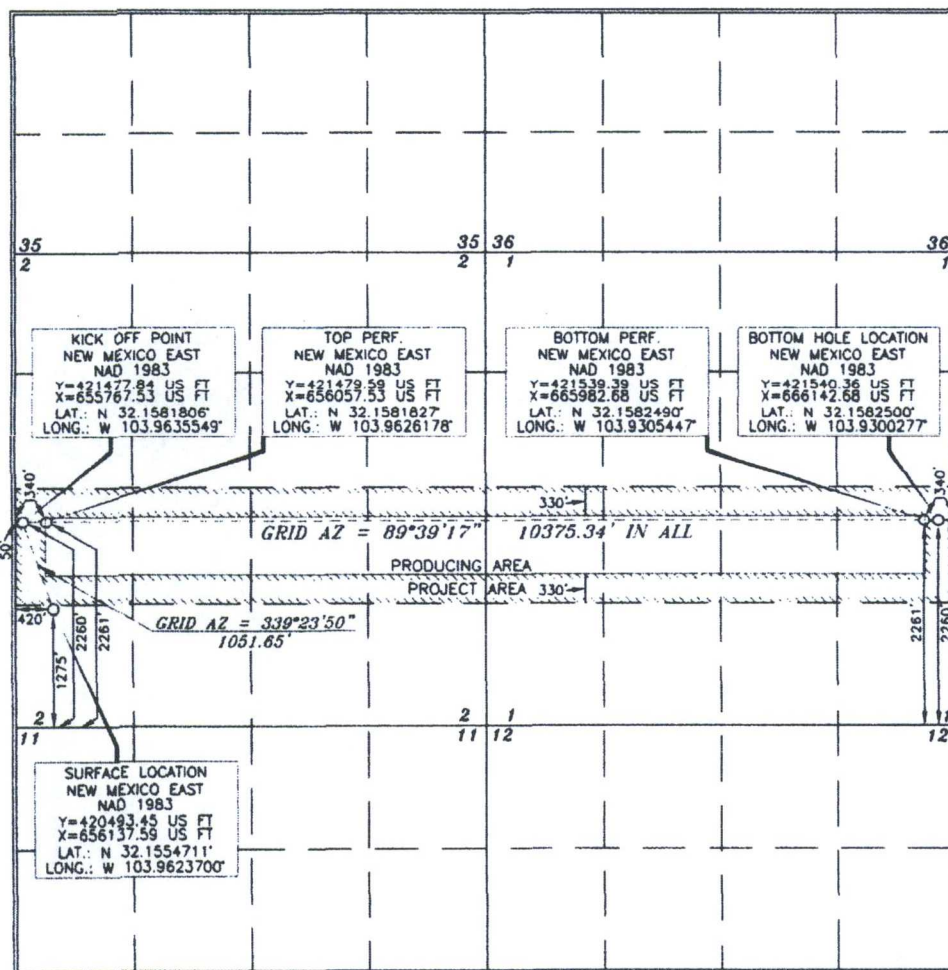
Surface Location

U/L or lot no.	Section	Township	Range	Lot 1dn	Feet from the	North/South line	Feet from the	East/West line	County
M	2	25 SOUTH	29 EAST, N.M.P.M.		1275'	SOUTH	420'	WEST	EDDY

Bottom Hole Location If Different From Surface

U/L or lot no.	Section	Township	Range	Lot 1dn	Feet from the	North/South line	Feet from the	East/West line	County
I	1	25 SOUTH	29 EAST, N.M.P.M.		2260'	SOUTH	180'	EAST	EDDY
Dedicated Acres 320	Joint or Infill Y	Consolidation Code	Order No.						

No allowable will be assigned to this completion until all interests have been consolidated or a non-standard unit has been approved by the division.



OPERATOR CERTIFICATION

I hereby certify that the information contained herein is true and complete to the best of my knowledge and belief, and that this organization either owns a working interest or undivided mineral interest in the land including the proposed bottom hole location or has a right to drill this well at this location pursuant to a contract with an owner of such a mineral or working interest, or to a voluntary pooling agreement or a compulsory pooling order heretofore entered by the division.

Sarah Mitchell 10/16/2017
Signature Date
Sarah Mitchell
Printed Name
sarah_mitchell@oxy.com
E-mail Address

SURVEYOR CERTIFICATION

I hereby certify that the well location shown on this plat was plotted from field notes of actual surveys made by me or under my supervision, and that the same is true and correct to the best of my belief.

15079
AUGUST 18, 2017
Date of Survey
Signature and Seal of Professional Surveyor
Certificate Number 15079

WO# 170818WL-a (KA)

District I
1625 N. French Dr., Hobbs, NM 88240
Phone: (505) 393-6161 Fax: (505) 393-0720
District II
811 S. First St., Artesia, NM 88210
Phone: (505) 748-1281 Fax: (505) 748-9720
District III
1000 Rio Brazos Road, Aztec, NM 87410
Phone: (505) 334-6178 Fax: (505) 334-6170
District IV
1220 S. St. Francis Dr., Santa Fe, NM 87505
Phone: (505) 476-3460 Fax: (505) 476-3462

State of New Mexico
Energy, Minerals & Natural Resources Department
OIL CONSERVATION DIVISION
1220 South St. Francis Dr.
Santa Fe, NM 87505

NM OIL CONSERVATION
ARTESIA DISTRICT

001 30 2017

Form C-102

Revised August 1, 2011

Submit one copy to appropriate

District Office

RECEIVED

☐ AMENDED REPORT

WELL LOCATION AND ACREAGE DEDICATION PLAT

API Number 30-015- 44512	Pool Code 96473	Pool Name Pierce Crossing; Bone Spring, East
Property Code 319797	Property Name CORRAL FLY "02-01" STATE	
OGRID No. 16696	Operator Name OXY USA INC.	
		Well Number 25H
		Elevation 3027.6'

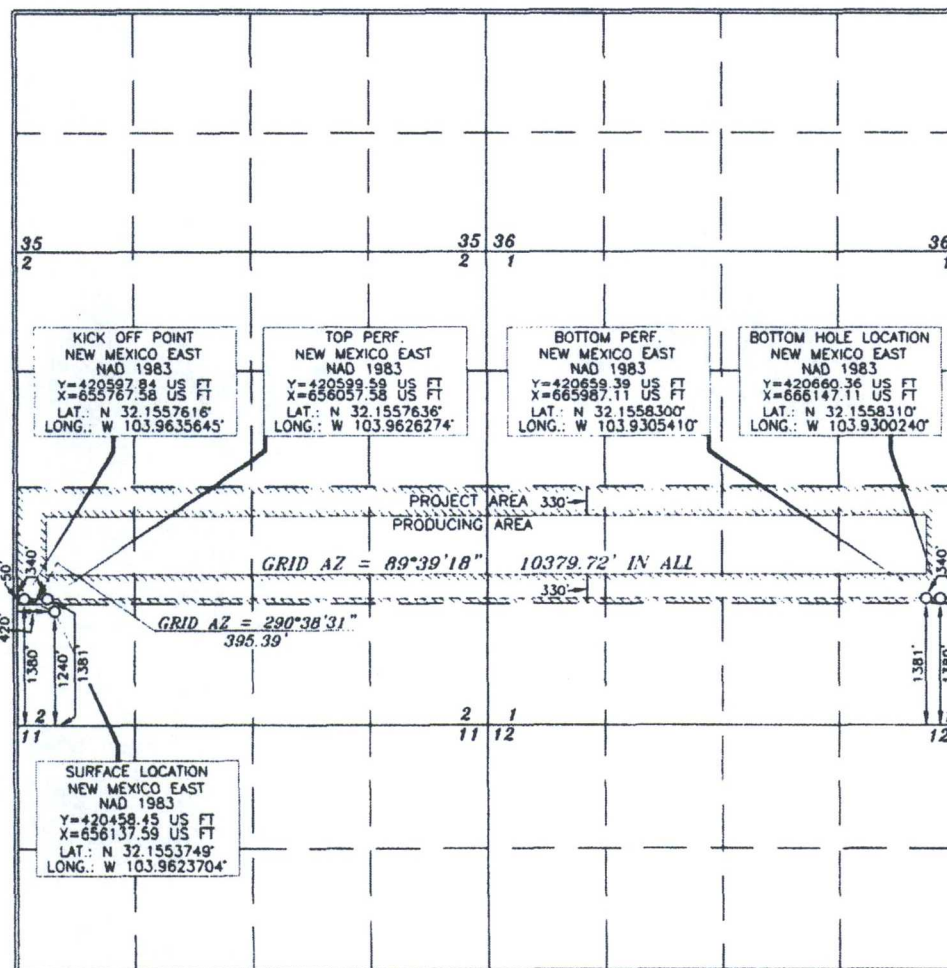
Surface Location

UL or lot no.	Section	Township	Range	Lot Idn	Feet from the	North/South line	Feet from the	East/West line	County
M	2	25 SOUTH	29 EAST, N.M.P.M.		1240'	SOUTH	420'	WEST	EDDY

Bottom Hole Location If Different From Surface

UL or lot no.	Section	Township	Range	Lot Idn	Feet from the	North/South line	Feet from the	East/West line	County
I	1	25 SOUTH	29 EAST, N.M.P.M.		1380'	SOUTH	180'	EAST	EDDY
Dedicated Acres 320		Joint or Infill Y	Consolidation Code	Order No. NSL will be filed.					

No allowable will be assigned to this completion until all interests have been consolidated or a non-standard unit has been approved by the division.



OPERATOR CERTIFICATION

I hereby certify that the information contained herein is true and complete to the best of my knowledge and belief, and that this organization either owns a working interest or unleased mineral interest in the land including the proposed bottom hole location or has a right to drill this well at this location pursuant to a contract with an owner of such a mineral or working interest, or to a voluntary pooling agreement or a compulsory pooling order heretofore entered by the division.

Sarah Mitchell 10/18/2017
Signature Date

Sarah Mitchell
Printed Name
sarah_mitchell@oxy.com
E-mail Address

SURVEYOR CERTIFICATION

I hereby certify that the well location shown on this plat was plotted from field notes of actual surveys made by me or under my supervision, and that the same is true and correct to the best of my belief.

15079
AUGUST 18 2017
Date of Survey
Terry J. As...
Signature and Seal of Professional Surveyor

Terry J. As... 9/2/2017
Certificate Number 15079

WO# 170818WL-b (KA)

District I
1625 N. French Dr., Hobbs, NM 88240
Phone: (575) 393-6161 Fax: (575) 393-0720
District II
811 S. First St., Artesia, NM 88210
Phone: (575) 748-1283 Fax: (575) 748-9720
District III
1000 Rio Brazos Road, Artesia, NM 87410
Phone: (505) 334-6178 Fax: (505) 334-6170
District IV
1220 S. St. Francis Dr., Santa Fe, NM 87505
Phone: (505) 476-3460 Fax: (505) 476-3462

State of New Mexico
Energy, Minerals & Natural Resources Department
NM OIL CONSERVATION
ARTESIA DISTRICT
OIL CONSERVATION DIVISION
1220 South St. Francis Dr. OCT 30 2017
Santa Fe, NM 87505

Form C-102
Revised August 1, 2011
Submit one copy to appropriate
District Office

☐ AMENDED REPORT

RECEIVED

WELL LOCATION AND ACREAGE DEDICATION PLAT

API Number 30-015- 44513	Pool Code 96473	Pool Name Pierce Crossing; Bone Spring, East
Property Code 319797	Property Name CORRAL FLY "02-01" STATE	Well Number 26H
OGRID No. 16696	Operator Name OXY USA INC.	Elevation 3029.4'

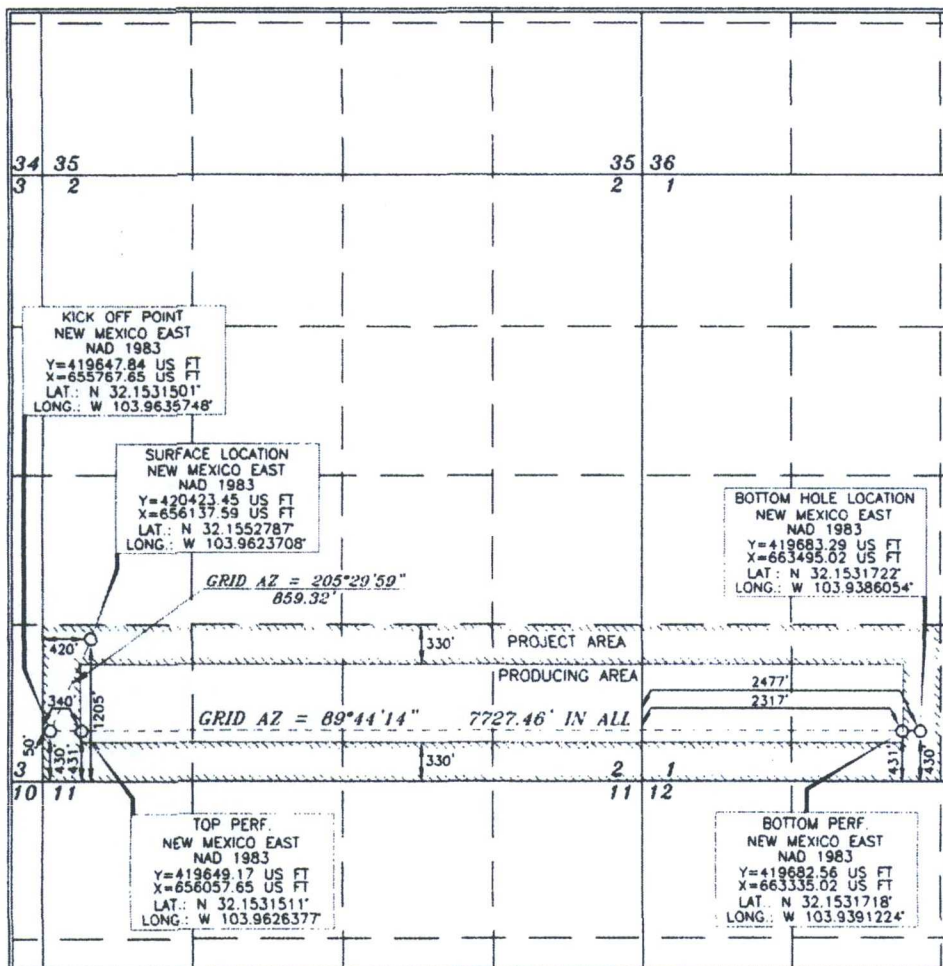
Surface Location

UL or lot no.	Section	Township	Range	Lot Idn	Feet from the	North/South line	Feet from the	East/West line	County
M	2	25 SOUTH	29 EAST, N.M.P.M.		1205'	SOUTH	420'	WEST	EDDY

Bottom Hole Location If Different From Surface

UL or lot no.	Section	Township	Range	Lot Idn	Feet from the	North/South line	Feet from the	East/West line	County
N	1	25 SOUTH	29 EAST, N.M.P.M.		430'	SOUTH	2477'	WEST	EDDY
Dedicated Acres 240	Joint or Infill Y	Consolidation Code	Order No						

No allowable will be assigned to this completion until all interests have been consolidated or a non-standard unit has been approved by the division.



OPERATOR CERTIFICATION

I hereby certify that the information contained herein is true and complete to the best of my knowledge and belief, and that this organization either owns a working interest or undivided mineral interest in the land including the proposed bottom hole location or has a right to drill this well at this location pursuant to a contract with an owner of such a mineral or working interest, or to a voluntary pooling agreement or a compulsory pooling order heretofore entered by the division.

Signature: Sarah Mitchell Date: 10/18/2017

Printed Name: Sarah Mitchell
E-mail Address: sarah_mitchell@oxy.com

SURVEYOR CERTIFICATION

I hereby certify that the well location shown on this plat was plotted from the actual surveys made by me or under my supervision, and that the same is true and correct to the best of my belief.

Date of Survey: AUGUST 18, 2017

Signature and Seal of Professional Surveyor: Terry J. Ash

Certificate Number: 15079

WO# 170818WL-C (KA)



OXY USA WTP Limited Partnership / OXY USA INC /

OCCIDENTAL PERMIAN LTD

A subsidiary of Occidental Petroleum Corporation

5 Greenway Plaza, Suite 110, Houston, Texas 77046

P.O. Box 4294, Houston, Texas 77210-4294

Direct: 713.985.6991

Robert_Wilson@oxy.com

December 4, 2017

CERTIFIED MAIL
RETURN RECEIPT REQUESTED

Re: Application for Lease Commingling and Off-lease Measurement, Sales, & Storage for
the Corral Fly 02-01 State Central Tank Battery
Eddy County, New Mexico

To Whom It May Concern:

This is to advise you that OXY USA INC is filing an application for pool and surface commingling at the Corral Fly 02-01 Central Tank Battery. A copy of the application submitted to the Division is attached.

Any objections or requests for a hearing regarding this application must be submitted to the New Mexico Oil Conservation Division Santa Fe Office within 20 Days from the date of this letter.

Pursuant to Statewide rule 19.15.12.10(C)(4)(g) OXY USA INC requests the option to include additional pools or leases within the defined parameters set forth in the order for future additions.

For questions regarding this application, please contact Robert Wilson at (713) 985-6991.

Respectfully,

OXY USA INC

Robert Wilson

Regulatory Engineer

Robert_Wilson@oxy.com

Owner Name	Address	City	State	Zip	Tracking
Vanguard Operating LLC	5847 San Felipe, Suite 3000	Houston	TX	77057	7017 1450 0002 2915 4048
COG Production LLC	One Concho Center 600 W. Illinois Ave	Midland	TX	79701	7017 1450 0002 2915 4055
EOG A Resources Inc	5509 Champions Drive	Midland	TX	79706	7017 1450 0002 2915 4062
EOG M Resources Inc	5509 Champions Drive	Midland	TX	79706	7017 1450 0002 2915 4079
EOG Y Resources Inc	5509 Champions Drive	Midland	TX	79706	7017 1450 0002 2915 4086
State of New Mexico	PO BOX 1148	Santa Fe	NM	87504-1148	7017 1450 0002 2915 4093
Mewbourne Oil Company	500 West Texas, Suite 1020	Midland	TX	79701	7017 1450 0002 2915 4109