

RECEIVED: 10/12/2018 REVIEWER: MAN TYPE: PLC APP NO: DMAN18285 42223  
 ABOVE THIS TABLE FOR OCD DIVISION USE ONLY

**NEW MEXICO OIL CONSERVATION DIVISION**  
 - Geological & Engineering Bureau -  
 1220 South St. Francis Drive, Santa Fe, NM 87505



**ADMINISTRATIVE APPLICATION CHECKLIST**

THIS CHECKLIST IS MANDATORY FOR ALL ADMINISTRATIVE APPLICATIONS FOR EXCEPTIONS TO DIVISION RULES AND REGULATIONS WHICH REQUIRE PROCESSING AT THE DIVISION LEVEL IN SANTA FE

**Applicant:** Tap Rock Operating, LLC **OGRID Number:** 372043  
**Well Name:** Zeus 24S33E0909 State No. 228H and Zeus 24S33E0909 State No. 204H well **API:** 30-025-44525 & 30-025-44473  
**Pool:** Upper Wolfcamp Pool, Triple X; Bone Spring, West Pool **Pool Code:** 98135 & 96674

**SUBMIT ACCURATE AND COMPLETE INFORMATION REQUIRED TO PROCESS THE TYPE OF APPLICATION INDICATED BELOW**

- 1) **TYPE OF APPLICATION:** Check those which apply for [A]
- A. Location - Spacing Unit - Simultaneous Dedication
- ☐ NSL      ☐ NSP (PROJECT AREA)      ☐ NSP (PRORATION UNIT)      ☐ SD

- B. Check one only for [I] or [II]

[I] Commingling - Storage - Measurement

☐ DHC    ☐ CTB    ☒ PLC    ☐ PC    ☐ OLS    ☐ OLM

[II] Injection - Disposal - Pressure Increase - Enhanced Oil Recovery

☐ WFX    ☐ PMX    ☐ SWD    ☐ IPI    ☐ EOR    ☐ PPR

- 2) **NOTIFICATION REQUIRED TO:** Check those which apply.

- A. ☐ Offset operators or lease holders  
 B. ☒ Royalty, overriding royalty owners, revenue owners  
 C. ☐ Application requires published notice  
 D. ☒ Notification and/or concurrent approval by SLO  
 E. ☐ Notification and/or concurrent approval by BLM  
 F. ☐ Surface owner  
 G. ☒ For all of the above, proof of notification or publication is attached, and/or,  
 H. ☐ No notice required

**FOR OCD ONLY**

- ☐ Notice Complete  
☐ Application Content Complete

- 3) **CERTIFICATION:** I hereby certify that the information submitted with this application for administrative approval is **accurate** and **complete** to the best of my knowledge. I also understand that **no action** will be taken on this application until the required information and notifications are submitted to the Division.

**Note: Statement must be completed by an individual with managerial and/or supervisory capacity.**

Jordan L. Kessler

Print or Type Name

Signature

October 12, 2018

Date

505-988-4421

Phone Number

jlkessler@hollandhart.com

e-mail Address



October 12, 2018

**VIA HAND DELIVERY**

OCT 12 2018 PM 10:57

Heather Riley  
Oil Conservation Division  
New Mexico Department of Energy,  
Minerals and Natural Resources  
1220 South Saint Francis Drive  
Santa Fe, New Mexico 87505

**Re: Application of Tap Rock Operating, LLC for administrative to surface commingle (pool commingle) oil and gas production from the spacing units underlying the E/2 E/2 of Section 9, Township 24 South, Range 33 East, NMPM, Lea County, New Mexico.**

Dear Ms. Riley,

Tap Rock Operating, LLC (OGRID No. 372043) seeks administrative approval to surface commingle (pool commingle) oil and gas production from the WC-025 G-09 S243310P; Upper Wolfcamp Pool (98135) and the Triple X; Bone Spring, West Pool (96674) *from all existing and future wells* drilled in the following spacing units in Lea County:

(a) Wolfcamp formation, E/2 E/2 of Section 9, Township 24 South, Range 33: This spacing unit is dedicated to the Zeus 24S33E0909 State No. 228H (API No. 30-025-44525) and the Zeus 24S33E0909 State No. 204H well (API No. 30-025-44473). These wells are producing from the WC-025 G-09 S243310P; Upper Wolfcamp (Pool Code 98135). *NIP*

(b) Bone Spring formation, E/2 E/2 of Section 9 Township 24 South, Range 33: This spacing unit is dedicated to the Zeus 24S33E0909 State No. 108H (API No. 30-025-44523), the Zeus 24S33E0909 State No. 188H (API No. 30-025-44524), and the Mogi 9 State Com No. 11H (API No. 30-025-41787). These wells are producing from the Triple X; Bone Spring, West (Pool Code 96674). *NIP*

Pursuant to NMAC 19.15.12.7, approved spacing units with are considered separate leases for surface commingling purposes. Tap Rock seeks authority to surface commingle production between the Wolfcamp and Bone Spring pools according to the provisions of NMAC 19.15.12.10.C *from all existing and future wells* in these separate spacing units at a surface facility located in the SE/4 SE/4 (Unit P) of Section 9. Pursuant to 19.15.12.10(C)(4)(g), Tap Rock also seeks authority to commingle production from future wells with notice provided only to interest



owners within future leases. Prior to commingling, gas production from each well will be separately metered using individual test separators with calibrated orifice meters that are manufactured to AGA specifications. Oil production from each well will also be separately metered using a turbine meter.

**Exhibit 1** is a land plat showing Tap Rock's current development and gathering system in the subject area. The plat identifies the wellbores, the spacing units, and the common surface facility located in the SE/4 SE/4 (Unit P) of Section 9. The lands in the E/2 E/2 of Section 9 are state lands.

**Exhibit 2** is a completed Application for Surface Commingling Form C-107-B with attachments.

**Exhibit 3** is a C-102 for each of the wells currently drilled within the existing spacing units.

**Exhibit 4** is a diagram of the surface facilities.

**Exhibit 5** is a list of the interest owners affected by this request for approval to off-lease measure and surface commingle production. A copy of this application with all attachments has been sent by certified mail to all affected parties advising them that if they have an objection they must file it in writing with the division within 20 days from the date the Division receives Tap Rock's application.

Thank you for your attention to this matter and please feel free to call if you have any questions and require additional information.

Sincerely,

Jordan L. Kessler

**ATTORNEY FOR  
TAP ROCK OPERATING, LLC**

cc: New Mexico State Land Office  
P.O. Box 1148  
Santa Fe, NM 87504-1148

**Jordan L. Kessler**  
**Associate**  
**Phone** (505) 988-4421  
**Fax** (505) 983-6043  
jlkessler@hollandhart.com

October 12, 2018

**CERTIFIED MAIL**  
**RETURN RECEIPT REQUESTED**

**TO: ALL AFFECTED PARTIES**

**Re: Application of Tap Rock Operating, LLC for administrative to surface commingle (pool commingle) oil and gas production from the spacing units underlying the E/2 E/2 of Section 9, Township 24 South, Range 33 East, NMPM, Lea County, New Mexico.**

Ladies and Gentlemen:

Enclosed is a copy of the above-referenced amended application, which was filed with the New Mexico Oil Conservation Division on this date. Any objection to this application must be filed in writing within twenty days from this date at the Division's Santa Fe office located at 1220 South St. Francis Drive, Santa Fe, New Mexico 87505. If no objection is received within this twenty-day period, this application may be approved administratively by the Division.

If you have any questions about this application, please contact the following:

Erica Hixson  
Tap Rock Operating, LLC  
(720) 460-3316  
EHixson@taprk.com

Sincerely,



Jordan L. Kessler  
**ATTORNEY FOR**  
**TAP ROCK OPERATING, LLC**

# WELL LOCATION AND ACREAGE DEDICATION PLAT

<sup>1</sup> API Number 025-44423		<sup>2</sup> Pool Code 98135		<sup>3</sup> Pool Name 98135	
<sup>4</sup> Property Code 		<sup>5</sup> Property Name ZEUS UNIT 24S33E0909			<sup>6</sup> Well Number 204H
<sup>7</sup> GRID No.		<sup>8</sup> Operator Name TAP ROCK OPERATING, LLC.			<sup>9</sup> Elevation 3613'

## 10 Surface Location

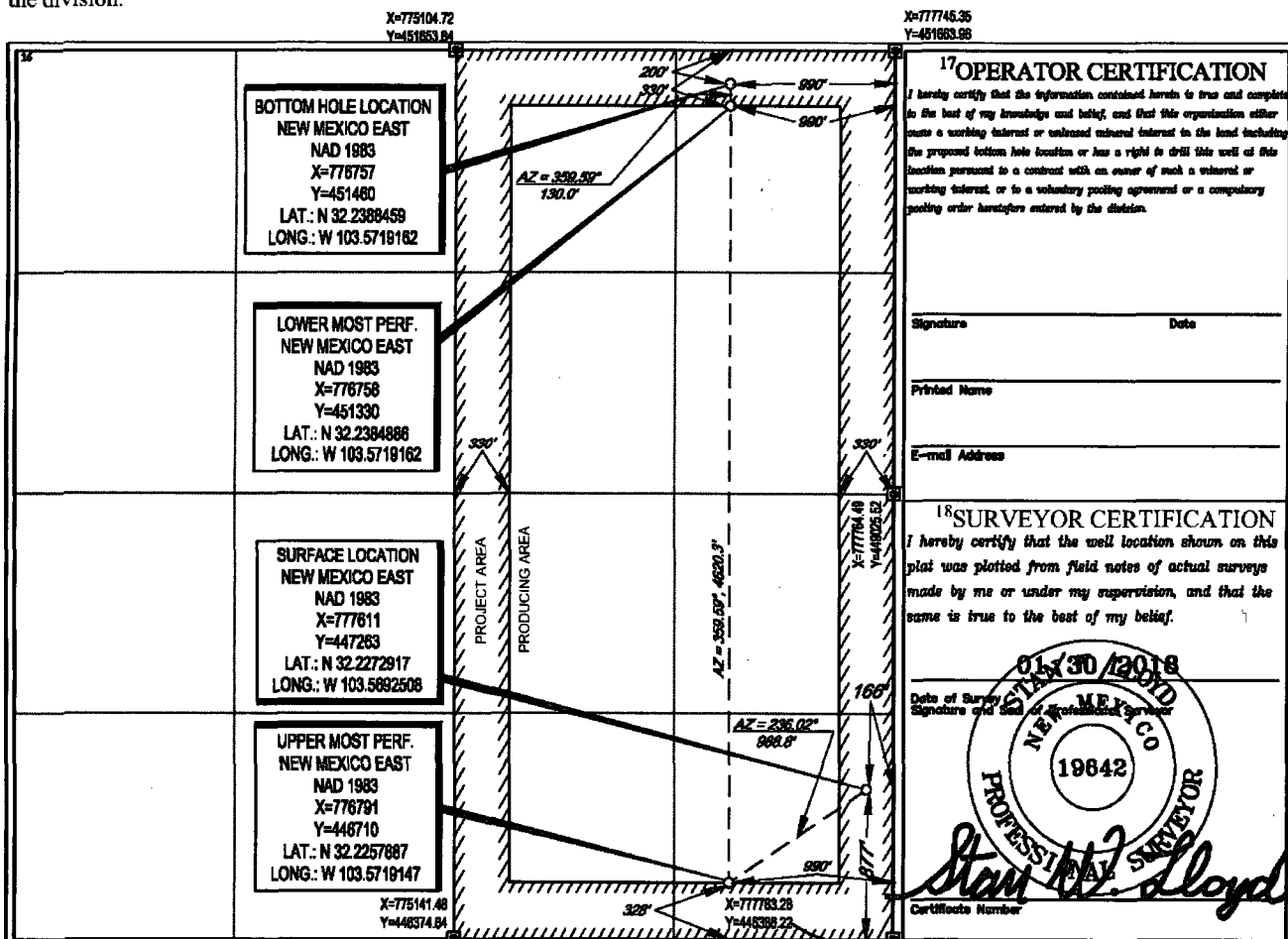
UL or lot no.	Section	Township	Range	Lot Idn	Feet from the	North/South line	Feet from the	East/West line	County
<b>P</b>	<b>9</b>	<b>24-S</b>	<b>33-E</b>	<b>-</b>	<b>877'</b>	<b>SOUTH</b>	<b>166'</b>	<b>EAST</b>	<b>LEA</b>

<sup>11</sup>Bottom Hole Location If Different From Surface

UL. or lot no.	Section	Township	Range	Lot Idn	Feet from the	North/South line	Feet from the	East/West line	County
<b>A</b>	<b>9</b>	<b>24-S</b>	<b>33-E</b>	<b>-</b>	<b>200'</b>	<b>NORTH</b>	<b>990'</b>	<b>EAST</b>	<b>LEA</b>

<sup>11</sup> Dedicated Acres <b>320.07</b>	<sup>13</sup> Joint or Infill	<sup>14</sup> Consolidation Code	<sup>15</sup> Order No.
--	-------------------------------	----------------------------------	-------------------------

No allowable will be assigned to this completion until all interests have been consolidated or a non-standard unit has been approved by the division.



District I  
1625 N. French Dr., Hobbs, NM 88240  
Phone: (575) 393-6161 Fax: (575) 393-0720  
District II  
811 S. First St., Artesia, NM 88210  
Phone: (575) 748-1283 Fax: (575) 748-9720  
District III  
1000 Rio Brazos Road, Artesia, NM 87410  
Phone: (505) 334-6178 Fax: (505) 334-6170  
District IV  
1220 S. St. Francis Dr., Santa Fe, NM 87505  
Phone: (505) 476-3460 Fax: (505) 476-3462

State of New Mexico  
Energy, Minerals & Natural Resources  
Department  
OIL CONSERVATION DIVISION  
1220 South St. Francis Dr.  
Santa Fe, NM 87505

FORM C-102  
Revised August 1, 2011  
Submit one copy to appropriate  
District Office  
☐ AMENDED REPORT

**WELL LOCATION AND ACREAGE DEDICATION PLAT**

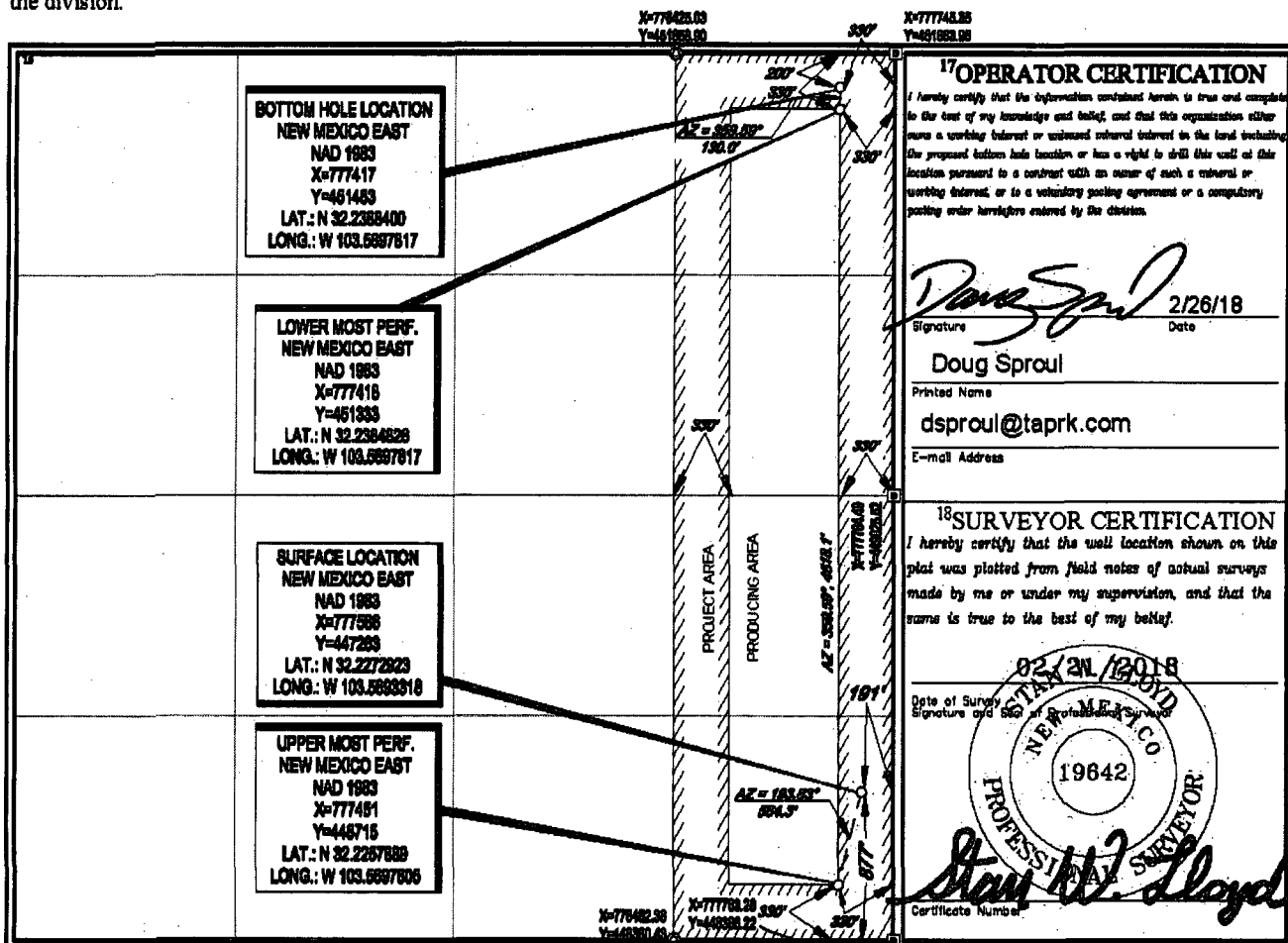
API Number 30-025-44525		Pool Code 98135	Pool Name
Property Code	Property Name ZEUS UNIT 24S33E0909		Well Number 228H
GRID No. 320719	Operator Name TAP ROCK OPERATING, LLC.		Elevation 3614'

10 Surface Location									
UL or lot no.	Section	Township	Range	Lot Idn	Feet from the	North/South line	Feet from the	East/West line	County
P	9	24-S	33-E	-	877'	SOUTH	191'	EAST	LEA

11 Bottom Hole Location If Different From Surface									
UL or lot no.	Section	Township	Range	Lot Idn	Feet from the	North/South line	Feet from the	East/West line	County
A	9	24-S	33-E	-	200'	NORTH	330'	EAST	LEA

Dedicated Acres 160	Joint or Infill	Consolidation Code	Order No.
------------------------	-----------------	--------------------	-----------

No allowable will be assigned to this completion until all interests have been consolidated or a non-standard unit has been approved by the division.



S:\SURVEY\TAPROCK\ZEUS\_UNIT\FINAL\_PRODUCT\BLO\_ZEUS\_UNIT\_24S33E0909\_228H\_REV2.D

EXHIBIT  
3

District I  
1625 N. French Dr., Hobbs, NM 88240  
Phone: (505) 393-6161 Fax: (505) 393-0720  
District II  
811 S. First St., Artesia, NM 88210  
Phone: (505) 748-1283 Fax: (505) 748-9720  
District III  
1000 Rio Brazos Road, Aztec, NM 87410  
Phone: (505) 334-6178 Fax: (505) 334-6170  
District IV  
1220 S. St. Francis Dr., Santa Fe, NM 87505  
Phone: (505) 476-3460 Fax: (505) 476-3462

State of New Mexico  
Energy, Minerals & Natural Resources  
Department  
OIL CONSERVATION DIVISION  
1220 South St. Francis Dr.  
Santa Fe, NM 87505

FORM C-102  
Revised August 1, 2011  
Submit one copy to appropriate  
District Office  
☐ AMENDED REPORT

**WELL LOCATION AND ACREAGE DEDICATION PLAT**

API Number <b>025-44523</b>		Pool Code <b>96674</b>		Pool Name	
Property Code		Property Name <b>ZEUS UNIT 24S33E0909</b>			Well Number <b>108H</b>
GRID No.		Operator Name <b>TAP ROCK OPERATING, LLC.</b>			Elevation <b>3614'</b>

**10 Surface Location**

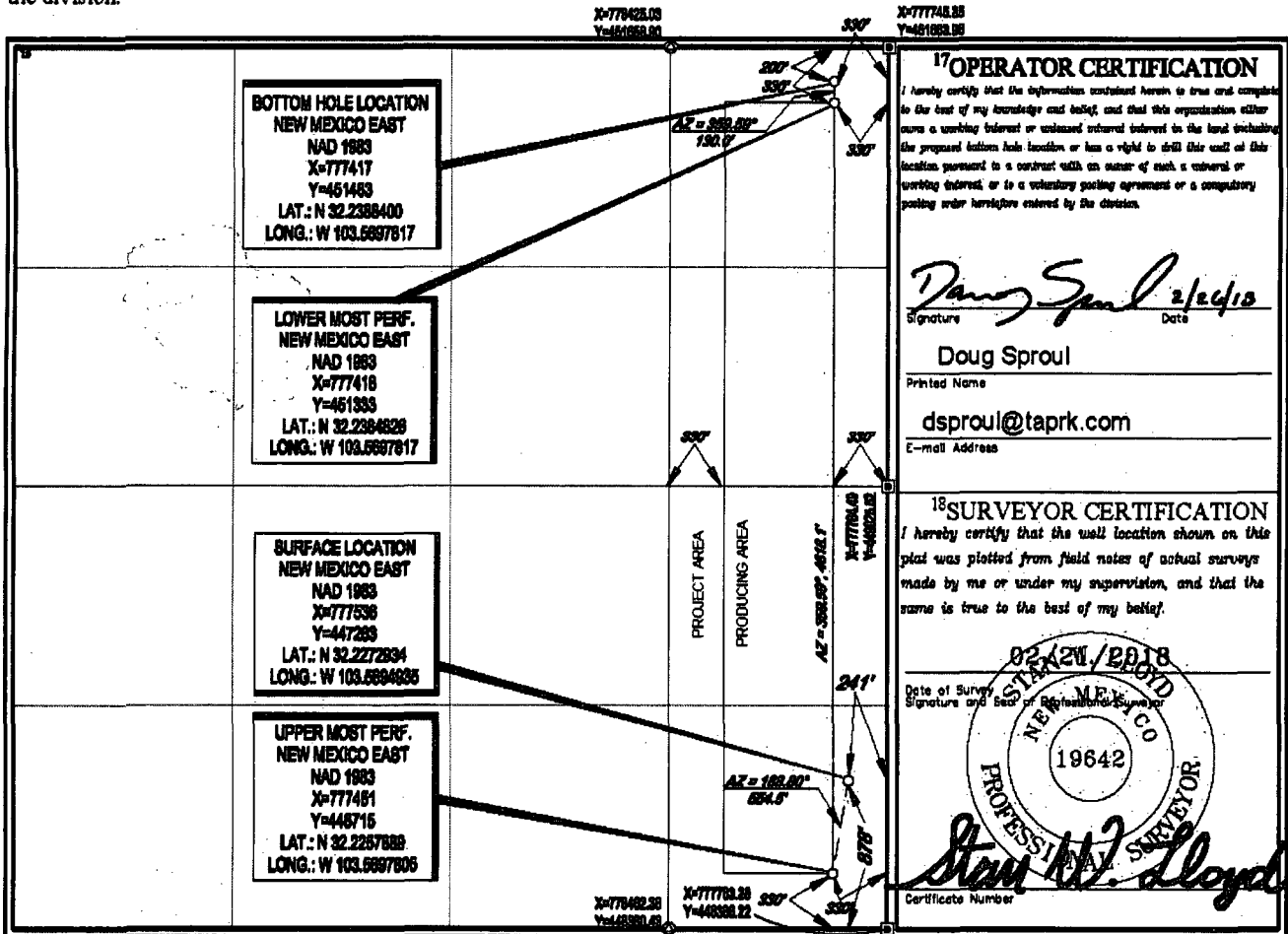
UL or lot no.	Section	Township	Range	Lot Idn	Feet from the	North/South line	Feet from the	East/West line	County
<b>P</b>	<b>9</b>	<b>24-S</b>	<b>33-E</b>	<b>-</b>	<b>878'</b>	<b>SOUTH</b>	<b>241'</b>	<b>EAST</b>	<b>LEA</b>

**11 Bottom Hole Location If Different From Surface**

UL or lot no.	Section	Township	Range	Lot Idn	Feet from the	North/South line	Feet from the	East/West line	County
<b>A</b>	<b>9</b>	<b>24-S</b>	<b>33-E</b>	<b>-</b>	<b>200'</b>	<b>NORTH</b>	<b>330'</b>	<b>EAST</b>	<b>LEA</b>

Dedicated Acres <b>160</b>	Joint or Infill	Consolidation Code	Order No.
-------------------------------	-----------------	--------------------	-----------

No allowable will be assigned to this completion until all interests have been consolidated or a non-standard unit has been approved by the division.



District I  
1625 N. French Dr., Hobbs, NM 88240  
Phone: (575) 393-6161 Fax: (575) 393-0720  
District II  
811 S. First St., Artesia, NM 88210  
Phone: (575) 748-1283 Fax: (575) 748-9720  
District III  
1000 Rio Brazos Road, Aztec, NM 87410  
Phone: (505) 334-6178 Fax: (505) 334-6170  
District IV  
1220 S. St. Francis Dr., Santa Fe, NM 87505  
Phone: (505) 476-3460 Fax: (505) 476-3462

State of New Mexico  
Energy, Minerals & Natural Resources  
Department  
OIL CONSERVATION DIVISION  
1220 South St. Francis Dr.  
Santa Fe, NM 87505

FORM C-102  
Revised August 1, 2011  
Submit one copy to appropriate  
District Office

☐ AMENDED REPORT

**WELL LOCATION AND ACREAGE DEDICATION PLAT**

<sup>1</sup> API Number 025-44524		<sup>2</sup> Pool Code 96674	<sup>3</sup> Pool Name
<sup>4</sup> Property Code	<sup>5</sup> Property Name ZEUS UNIT 24S33E0909		<sup>6</sup> Well Number 188H
<sup>7</sup> GRID No.	<sup>8</sup> Operator Name TAP ROCK OPERATING, LLC.		<sup>9</sup> Elevation 3614'

<sup>10</sup>Surface Location

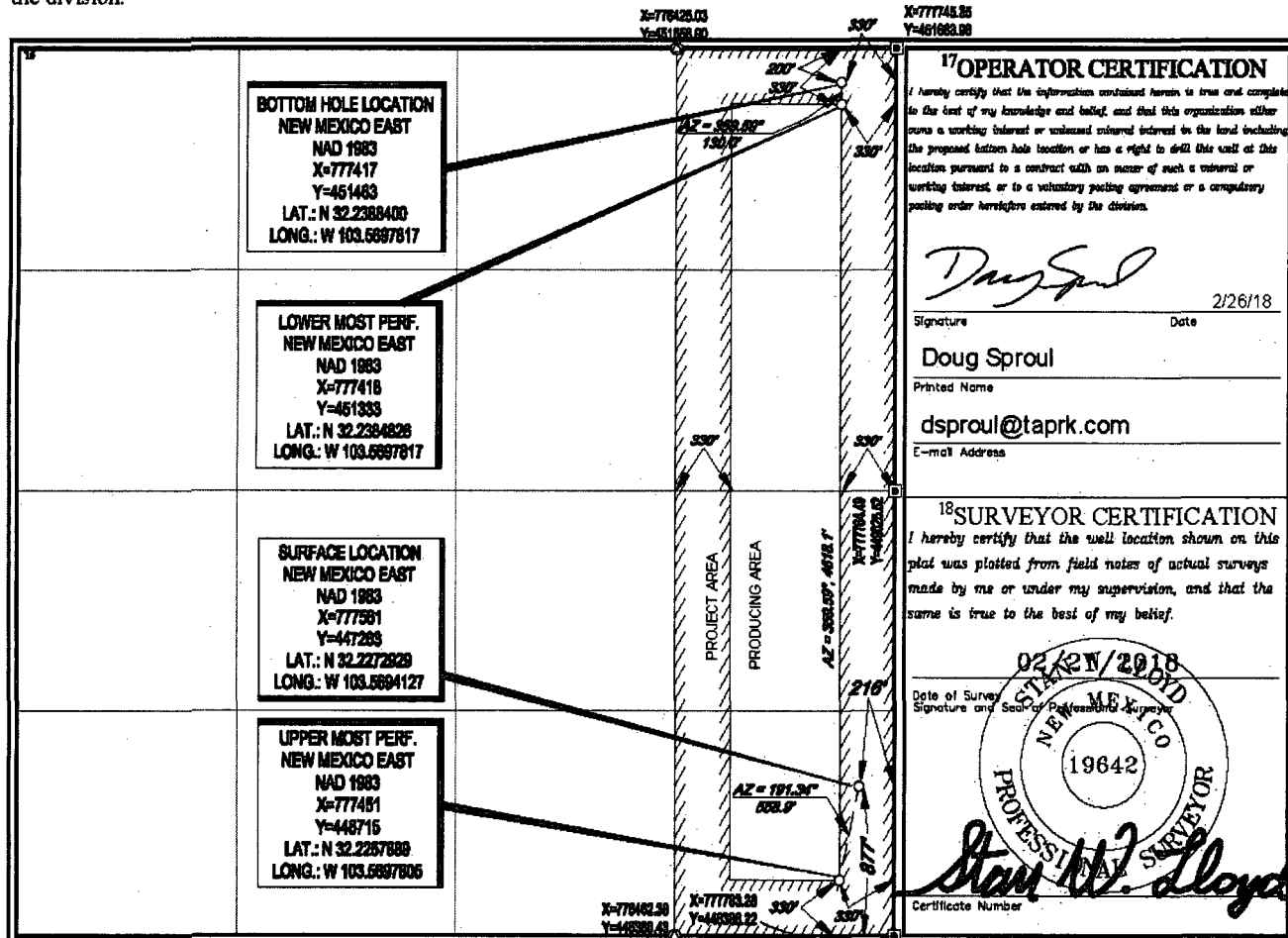
UL or lot no.	Section	Township	Range	Lot Idn	Feet from the	North/South line	Feet from the	East/West line	County
P	9	24-S	33-E	-	877'	SOUTH	216'	EAST	LEA

<sup>11</sup>Bottom Hole Location If Different From Surface

UL or lot no.	Section	Township	Range	Lot Idn	Feet from the	North/South line	Feet from the	East/West line	County
A	9	24-S	33-E	-	200'	NORTH	330'	EAST	LEA

<sup>12</sup> Dedicated Acres 160	<sup>13</sup> Joint or Infill	<sup>14</sup> Consolidation Code	<sup>15</sup> Order No.
--------------------------------------	-------------------------------	----------------------------------	-------------------------

No allowable will be assigned to this completion until all interests have been consolidated or a non-standard unit has been approved by the division.





# Zeus Land Plat

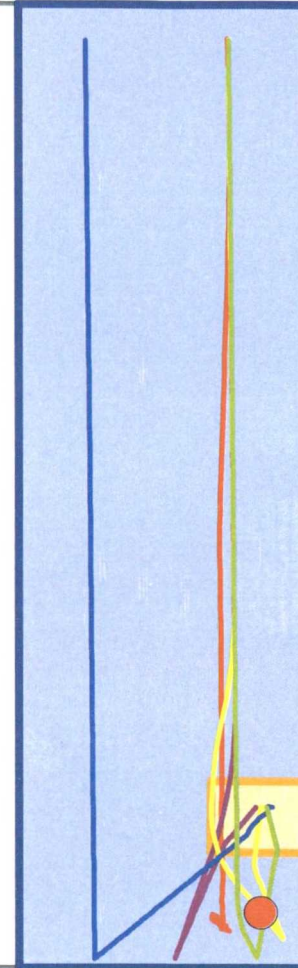


## Legend

- Zeus Sales Point
- MOGI 9 STATE COM 11H
- ZEUS 24S33E0909 STATE 228H
- ZEUS 24S33E0909 STATE 188H
- ZEUS 24S33E0909 STATE 108H
- ZEUS 24S33E0909 STATE 204H
- Drilling Pad
- Zeus ~160 Acre Unit



09



Southeast New Mexico

Date: 5/29/201

District I  
1625 N. French Drive, Hobbs, NM 88240  
District II  
811 S. First St., Artesia, NM 88210  
District III  
1000 Rio Brazos Road, Aztec, NM 87410  
District IV  
1220 S. St Francis Dr, Santa Fe, NM  
87505

State of New Mexico  
Energy, Minerals and Natural Resources Department

Form C-107-B  
Revised August 1, 2011

**OIL CONSERVATION DIVISION**

1220 S. St Francis Drive  
Santa Fe, New Mexico 87505

Submit the original  
application to the Santa Fe  
office with one copy to the  
appropriate District Office.

**APPLICATION FOR SURFACE COMMINGLING (DIVERSE OWNERSHIP)**

OPERATOR NAME: TAP ROCK OPERATING, LLC  
OPERATOR ADDRESS: 602 PARK POINT DR, GOLDEN, CO 80401  
APPLICATION TYPE:

☒ Pool Commingling ☐ Lease Commingling ☐ Pool and Lease Commingling ☐ Off-Lease Storage and Measurement (Only if not Surface Commingled)

LEASE TYPE: ☐ Fee ☒ State ☐ Federal

Is this an Amendment to existing Order? ☐ Yes ☒ No If "Yes", please include the appropriate Order No. \_\_\_\_\_  
Have the Bureau of Land Management (BLM) and State Land office (SLO) been notified in writing of the proposed commingling  
☐ Yes ☒ No

**(A) POOL COMMINGLING**  
Please attach sheets with the following information

(1) Pool Names and Codes	Gravities / BTU of Non-Commingled Production	Calculated Gravities / BTU of Commingled Production		Calculated Value of Commingled Production	Volumes
PURPLE SAGE; WOLFCAMP (GAS) 98135	45/1350	50/1240		No change in value	
	55/1250				
TRIPLE X; BONE SPRING, WEST 96674	55/1150				
	50/1250				
No	44/1200				

- (2) Are any wells producing at top allowables? ☐ Yes ☐ No  
(3) Has all interest owners been notified by certified mail of the proposed commingling? ☒ Yes ☐ No.  
(4) Measurement type: ☒ Metering ☐ Other (Specify)  
(5) Will commingling decrease the value of production? ☐ Yes ☒ No If "yes", describe why commingling should be approved

**(B) LEASE COMMINGLING**  
Please attach sheets with the following information

- (1) Pool Name and Code.  
(2) Is all production from same source of supply? ☐ Yes ☐ No  
(3) Has all interest owners been notified by certified mail of the proposed commingling? ☐ Yes ☐ No  
(4) Measurement type: ☐ Metering ☐ Other (Specify)

**(C) POOL and LEASE COMMINGLING**  
Please attach sheets with the following information

- (1) Complete Sections A and E.

**(D) OFF-LEASE STORAGE and MEASUREMENT**  
Please attached sheets with the following information

- (1) Is all production from same source of supply? ☐ Yes ☐ No  
(2) Include proof of notice to all interest owners.

**(E) ADDITIONAL INFORMATION (for all application types)**  
Please attach sheets with the following information

- (1) A schematic diagram of facility, including legal location.  
(2) A plat with lease boundaries showing all well and facility locations. Include lease numbers if Federal or State lands are involved.  
(3) Lease Names, Lease and Well Numbers, and API Numbers.

I hereby certify that the information above is true and complete to the best of my knowledge and belief.

SIGNATURE: \_\_\_\_\_ TITLE: \_\_\_\_\_ DATE: \_\_\_\_\_  
TYPE OR PRINT NAME Josh Mathews TELEPHONE NO.: 720 460 3318

EXHIBIT

2

BRADLEY MORTON  
SENIOR PRODUCTION ENGINEER  
DIRECT: (720) 460-3518  
BMORTON@TAPRK.COM



October 11, 2018

New Mexico Oil Conservation Division  
1220 South St. Francis Drive  
Santa Fe, NM 87505

**Re: Application of Tap Rock Operating, LLC for administrative approval for approval to surface commingle (pool commingle) oil and gas production from the spacing units comprised of the E/2 E/2 of Section 9, Township 24S, Range 33E Eddy County, New Mexico (the "Lands")**

To Whom This May Concern,

Tap Rock Operating, LLC ("Tap Rock"), OGRID No. 372043, requests to commingle current oil and gas production from five (4) distinct wells located on the Lands and future production from the Lands as described herein. All wells will be metered through individual liquid coriolis flow meters for oil and ultrasonic flow meters for gas. The gas commingling will occur after individual measurement at each well. Gas exiting each well test flows into one gathering line, as depicted on **Exhibit A**, the gas gathering line. Each well on the Lands will have its own test separator with a coriolis flow meter for oil and ultrasonic flow meter for gas manufactured and assembled in accordance with the American Gas Association (AGA) specifications. All primary and secondary Electronic Flow Measurement (EFM) equipment is tested and calibrated by a reputable third-party measurement company in accordance with industry specifications.

Gas samples are obtained at the time of the meter testing and calibration and the composition and heating value are determined by a laboratory in accordance with the American Petroleum Institute (API) specifications to ensure accurate volume and energy (MMBTU) determinations. We have attached a sample gas analysis from the one producing well on the Lands at **Exhibit B**.

The flow stream from each wellhead is demonstrated in the Process Flow Diagram (PFD) attached as **Exhibit A** hereto. The PFD shows that the water, oil and gas leave the wellbore and flow into a wellhead test separator which separates each stream. The oil is measured via the coriolis flow meter on each individual well and is calibrated periodically by a third-party measurement company for accuracy. After the oil is individually metered by coriolis flow meters at each well it can be comingled into a heater treater then into the stock tanks or, each well can be isolated into its own individual tank for testing purposes. The gas is measured on a volume and MMBTU basis by an ultrasonic flow meter on each individual well and supporting EFM equipment in accordance with API Chapter 21.1. The gas is then sent into a gathering line where it is comingled with each of the other well's metered gas. The gathering line is then metered by another ultrasonic flow meter at the tank battery check meter to show the total volume of gas leaving the tank battery. The

tank battery meter is tested and calibrated in accordance with industry specifications and volume and energy and determined on an hourly, daily and monthly basis. Once the gas exits the final tank battery sales check it travels directly into a third-party sales connect meter. The third-party gas gatherer has its own meter that measures the gas for custody transfer and that meter is also calibrated periodically to ensure measurement accuracy.

A

In conclusion, all the oil and gas produced on the Lands is and will be metered separately at each wellhead and allocated using accurate measurement equipment according to API specifications.

Regards,

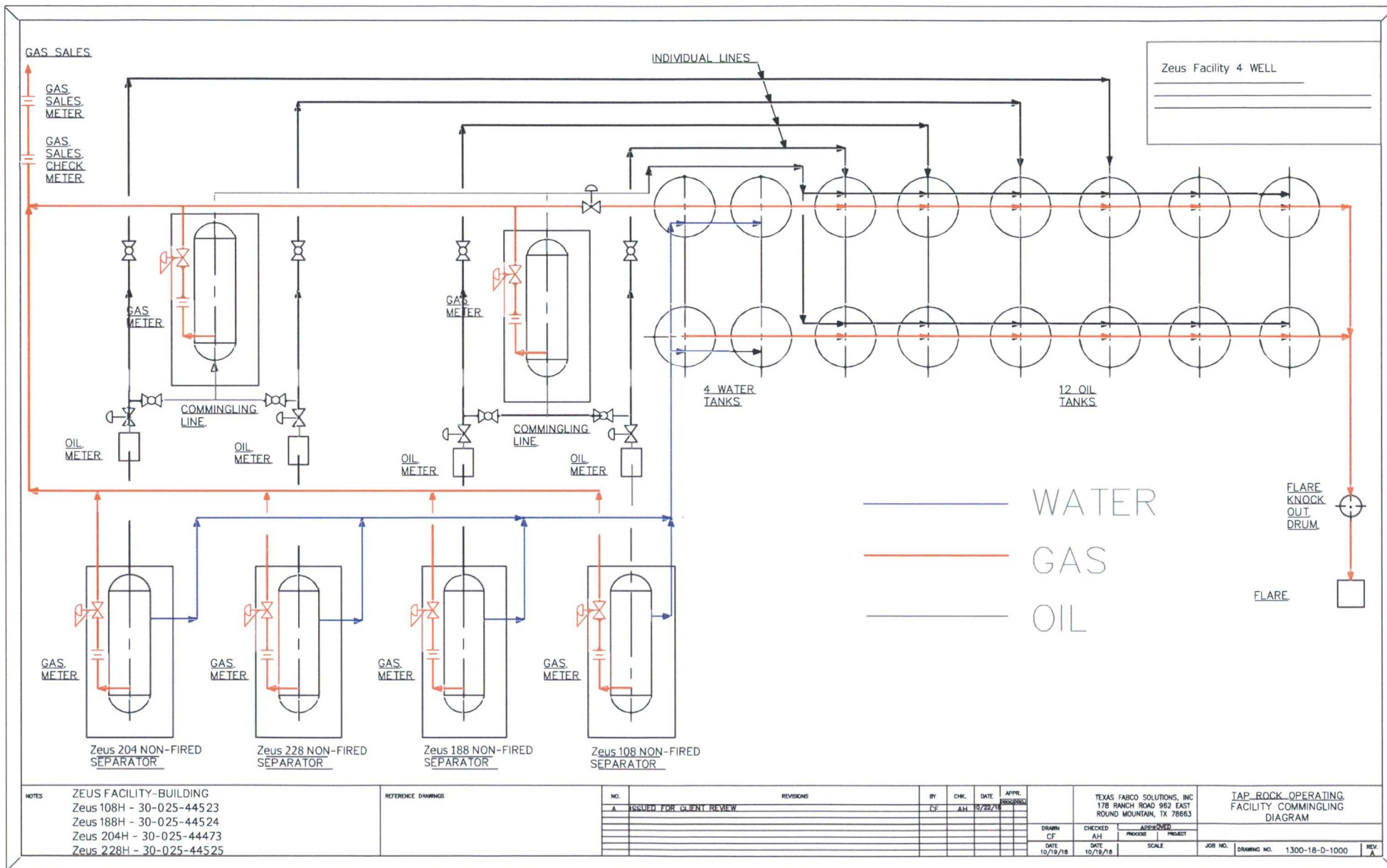
TAP ROCK OPERATING, LLC

Bradley Morton  
Senior Production Engineer

# APPLICATION FOR POOL COMMINGLE, STORAGE AND SALES FOR OIL AND GAS PRODUCTION AT ZEUS CTB

Well Name	API	Surface Location	Pool		Date Online	Oil (MBOD)	Gas (MCFD)	Gravity	BTU/cf
ZEUS 24S33E0909 STATE #108H	30-025-44523	P-09-24S-33E	96674	TRIPLE X; BONE SPRING, WEST	11.2.18	*567	*2750	*48.6	*1328
ZEUS 24S33E0909 STATE #188H	30-025-44524	P-09-24S-33E	96674	TRIPLE X; BONE SPRING, WEST	11.2.18	*873	*1850	*46	*1328
ZEUS 24S33E0909 STATE #204H	30-025-44473	P-09-24S-33E	98135	WC-025 G-09 S243310P; UPPER WOLFCAMP	11.2.18	*955	*1709	*48.6	*1328
ZEUS 24S33E0909 STATE #228H	30-025-44525	P-09-24S-33E	98135	WC-025 G-09 S243310P; UPPER WOLFCAMP	11.2.18	*540	*1013	*48.8	*1328

\* Estimated 6 mo. avg. production & est. oil and gas properties based on off sets



EXHIBIT

4

## Exhibit 5

Devon Production Company, LP  
1500 Mid-America Tower  
20 North Broadway  
Oklahoma City, OK 73102

EOG Resources, Inc.  
5509 Champions Drive  
Midland, TX 79706

Murchison Oil and Gas, Inc.  
7250 Dallas Parkway, Suite 1400  
Plano, TX 75024

Pickens Southwest Energy, LLC  
8117 Preston Road, Suite 260W  
Dallas, TX 75225

MEC Petroleum Corp.  
414 W Texas Ave. #410  
Midland, TX 79701

Mesa Southwest Energy, LLC  
8117 Preston Road, Suite 260W  
Dallas, TX 75225



## Exhibit 5

Devon Production Company, LP  
1500 Mid-America Tower  
20 North Broadway  
Oklahoma City, OK 73102

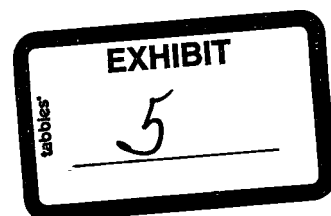
EOG Resources, Inc.  
5509 Champions Drive  
Midland, TX 79706

Murchison Oil and Gas, Inc.  
7250 Dallas Parkway, Suite 1400  
Plano, TX 75024

Pickens Southwest Energy, LLC  
8117 Preston Road, Suite 260W  
Dallas, TX 75225

MEC Petroleum Corp.  
414 W Texas Ave. #410  
Midland, TX 79701

Mesa Southwest Energy, LLC  
8117 Preston Road, Suite 260W  
Dallas, TX 75225







## Shipment Confirmation Acceptance Notice

### A. Mailer Action

**Note to Mailer:** The labels and volume associated to this form online, **must** match the labeled packages being presented to the USPS® employee with this form.

Tap Rock - Zeus Commingle Application  
CM# 93477.0001 20181012  
Interest Owners

Shipment Date: 10/12/2018

Shipped From:

Name: HOLLAND & HART LLP

Address: 110 N GUADALUPE ST # 1

City: SANTA FE

State: NM ZIP+4® 87501

Type of Mail	Volume
Priority Mail Express®	
Priority Mail®	0
First-Class Package Service®	
Returns	
International*	
Other	6
Total	6

\*Start time for products with service guarantees will begin when mail arrives at the local Post Office™ and items receive individual processing and acceptance scans.

### B. USPS Action

Note to RSS Clerk:

1. Home screen > Mailing/Shipping > More
2. Select Shipment Confirm
3. Scan or enter the barcode/label number from PS Form 5630
4. Confirm the volume count message by selecting Yes or No
5. Select Pay and End Visit to complete transaction

USPS EMPLOYEE: Please scan upon pickup or receipt of mail.  
Leave form with customer or in customer's mail receptacle.

USPS SCAN AT ACCEPTANCE



9275 0901 1935 6200 0010 7576 89



## Firm Mailing Book For Accountable Mail

Name and Address of Sender <b>Holland &amp; Hart LLP</b> 110 N Guadalupe St # 1 Santa Fe NM 87501		Check type of mail or service <input type="checkbox"/> Adult Signature Required <input type="checkbox"/> Priority Mail Express <input type="checkbox"/> Adult Signature Restricted Delivery <input type="checkbox"/> Registered Mail <input checked="" type="checkbox"/> Certified Mail <input type="checkbox"/> Return Receipt for Merchandise <input type="checkbox"/> Certified Mail Restricted Delivery <input type="checkbox"/> Signature Confirmation <input type="checkbox"/> Collect on Delivery (COD) <input type="checkbox"/> Signature Confirmation Restricted Delivery <input type="checkbox"/> Insured Mail <input type="checkbox"/> Priority Mail		Affix Stamp Here (if issued as an international certificate of mailing or for additional copies of this receipt). <b>Postmark with Date of Receipt.</b>													
USPS Tracking/Article Number		Addressee (Name, Street, City, State, & ZIP Code™)		Postage	(Extra Service) Fee	Handling Charge	Actual Value if Registered	Insured Value	Due Sender if COD	ASR Fee	ASRD Fee	RD Fee	RR Fee	SC Fee	SCRD Fee	SH Fee	
1.	9214 8901 9403 8373 9049 69	Devon Production Company LP 1500 Mid-america Tower 20 North Broadway Oklahoma City OK 73102		2.05	3.45	Handling Charge - if Registered and over \$50,000 in value							1.50				
2.	9214 8901 9403 8373 9049 76	EOG Resources Inc 5509 Champions Drive Midland TX 79706		2.05	3.45									1.50			
3.	9214 8901 9403 8373 9049 83	Murchison Oil & Gas Inc 7250 Dallas Parkway Suite 1400 Plano TX 75024		2.05	3.45									1.50			
4.	9214 8901 9403 8373 9049 90	Pickens Southwest Energy LLC 8117 Preston Road Suite 260W Dallas TX 75225		2.05	3.45									1.50			
5.	9214 8901 9403 8373 9050 03	MEC Petroleum Corp 414 W Texas Ave #410 Midland TX 79701		2.05	3.45									1.50			
6.	9214 8901 9403 8373 9050 10	Mesa Southwest Energy LLC 8117 Preston Road Suite 260W Dallas TX 75225		2.05	3.45									1.50			
						Handling Charge - if Registered and over \$50,000 in value											
Total Number of Pieces Listed by Sender 6	Total Number of Pieces Received at Post Office	Postmaster, Per (Name of receiving employee)															



## Shipment Confirmation Acceptance Notice

### A. Mailer Action

**Note to Mailer:** The labels and volume associated to this form online, **must** match the labeled packages being presented to the USPS® employee with this form.

Tap Rock - Zeus Commingle Application  
SLO

Shipment Date: 10/12/2018

Shipped From:

Name: HOLLAND & HART LLP

Address: 110 N GUADALUPE ST # 1

City: SANTA FE

State: NM ZIP+4® 87501

Type of Mail	Volume
Priority Mail Express®	
Priority Mail®	0
First-Class Package Service®	
Returns	
International*	
Other	1
Total	1

\*Start time for products with service guarantees will begin when mail arrives at the local Post Office™ and items receive individual processing and acceptance scans.

### B. USPS Action

**Note to RSS Clerk:**

1. Home screen > Mailing/Shipping > More
2. Select Shipment Confirm
3. Scan or enter the barcode/label number from PS Form 5630
4. Confirm the volume count message by selecting Yes or No
5. Select Pay and End Visit to complete transaction

USPS EMPLOYEE: Please scan upon pickup or receipt of mail.  
Leave form with customer or in customer's mail receptacle.

USPS SCAN AT ACCEPTANCE



9275 0901 1935 6200 0010 7659 05



# Shipment Confirmation Acceptance Notice

## A. Mailer Action

**Note to Mailer:** The labels and volume associated to this form online, **must** match the labeled packages being presented to the USPS® employee with this form.

Tap Rock - Zeus Commingle Application  
SLO

Shipment Date: 10/12/2018

Shipped From:

Name: HOLLAND & HART LLP

Address: 110 N GUADALUPE ST # 1

City: SANTA FE

State: NM ZIP+4® 87501

Type of Mail	Volume
Priority Mail Express®	
Priority Mail®	0
First-Class Package Service®	
Returns	
International*	
Other	1
Total	1

\*Start time for products with service guarantees will begin when mail arrives at the local Post Office™ and items receive individual processing and acceptance scans.

## B. USPS Action

Note to RSS Clerk:

1. Home screen > Mailing/Shipping > More
2. Select Shipment Confirm
3. Scan or enter the barcode/label number from PS Form 5630
4. Confirm the volume count message by selecting Yes or No
5. Select Pay and End Visit to complete transaction

USPS EMPLOYEE: Please scan upon pickup or receipt of mail.  
Leave form with customer or in customer's mail receptacle.

USPS SCAN AT ACCEPTANCE



9275 0901 1935 6200 0010 7659 05



## Firm Mailing Book For Accountable Mail

Name and Address of Sender <b>Holland &amp; Hart LLP</b> <b>110 N Guadalupe St # 1</b> <b>Santa Fe NM 87501</b>		Check type of mail or service <input type="checkbox"/> Adult Signature Required <input type="checkbox"/> Priority Mail Express <input type="checkbox"/> Adult Signature Restricted Delivery <input type="checkbox"/> Registered Mail <input checked="" type="checkbox"/> Certified Mail <input type="checkbox"/> Return Receipt for Merchandise <input type="checkbox"/> Certified Mail Restricted Delivery <input type="checkbox"/> Signature Confirmation <input type="checkbox"/> Collect on Delivery (COD) <input type="checkbox"/> Signature Confirmation Restricted Delivery <input type="checkbox"/> Insured Mail <input type="checkbox"/> Priority Mail		Affix Stamp Here <i>(if issued as an international certificate of mailing or for additional copies of this receipt).</i> <b>Postmark with Date of Receipt.</b>													
USPS Tracking/Article Number		Addressee (Name, Street, City, State, & ZIP Code™)		Postage	(Extra Service) Fee	Handling Charge	Actual Value if Registered	Insured Value	Due Sender if COD	ASR Fee	ASRD Fee	RD Fee	RR Fee	SC Fee	SCRD Fee	SH Fee	
1. 9214 8901 9403 8373 9259 02		STATE OF NEW MEXICO LAND OFFICE 310 OLD SANTA FE TRAIL SANTA FE NM 87504		2.05	3.45	Handling Charge - if Registered and over \$50,000 in value							1.50				
Total Number of Pieces Listed by Sender		Total Number of Pieces Received at Post Office		Postmaster, Per (Name of receiving employee)													
1																	

**Production Summary Report**

**API: 30-025-41787**

**MOGI 9 STATE COM #011H**

**Printed On: Monday, October 15 2018**

		Production					
Year	Pool	Month	Oil(BBLS)	Gas(MCF)	Water(BBLS)	Days P/I	Water(BBLS)
2015	[96674] TRIPLE X;BONE SPRING, WEST	Jan	7196	6912	25854	16	0
2015	[96674] TRIPLE X;BONE SPRING, WEST	Feb	8778	9413	15276	28	0
2015	[96674] TRIPLE X;BONE SPRING, WEST	Mar	9031	9205	12845	31	0
2015	[96674] TRIPLE X;BONE SPRING, WEST	Apr	7085	7917	10650	30	0
2015	[96674] TRIPLE X;BONE SPRING, WEST	May	6467	7191	9355	31	0
2015	[96674] TRIPLE X;BONE SPRING, WEST	Jun	5399	6731	7673	30	0
2015	[96674] TRIPLE X;BONE SPRING, WEST	Jul	4819	6088	6369	31	0
2015	[96674] TRIPLE X;BONE SPRING, WEST	Aug	3916	6769	5695	31	0
2015	[96674] TRIPLE X;BONE SPRING, WEST	Sep	3717	5395	5318	30	0
2015	[96674] TRIPLE X;BONE SPRING, WEST	Oct	4356	6202	5957	31	0
2015	[96674] TRIPLE X;BONE SPRING, WEST	Nov	3982	5559	5876	30	0
2015	[96674] TRIPLE X;BONE SPRING, WEST	Dec	3448	4085	4939	29	0
2016	[96674] TRIPLE X;BONE SPRING, WEST	Jan	3465	3880	4868	31	0
2016	[96674] TRIPLE X;BONE SPRING, WEST	Feb	3016	4182	4322	29	0
2016	[96674] TRIPLE X;BONE SPRING, WEST	Mar	2870	4290	4211	31	0
2016	[96674] TRIPLE X;BONE SPRING, WEST	Apr	2940	4684	4294	30	0
2016	[96674] TRIPLE X;BONE SPRING, WEST	May	2899	5084	4350	31	0
2016	[96674] TRIPLE X;BONE SPRING, WEST	Jun	2527	4128	3696	30	0
2016	[96674] TRIPLE X;BONE SPRING, WEST	Jul	2631	4587	3772	31	0
2016	[96674] TRIPLE X;BONE SPRING, WEST	Aug	2511	4539	3692	31	0
2016	[96674] TRIPLE X;BONE SPRING, WEST	Sep	2251	4375	3370	30	0
2016	[96674] TRIPLE X;BONE SPRING, WEST	Oct	2388	4479	3507	31	0
2016	[96674] TRIPLE X;BONE SPRING, WEST	Nov	2134	3811	3205	30	0
2016	[96674] TRIPLE X;BONE SPRING, WEST	Dec	2236	4867	3234	31	0
2017	[96674] TRIPLE X;BONE SPRING, WEST	Jan	2006	2704	3162	31	0
2017	[96674] TRIPLE X;BONE SPRING, WEST	Feb	1458	2139	2995	26	0
2017	[96674] TRIPLE X;BONE SPRING, WEST	Mar	856	3439	6909	13	0
2017	[96674] TRIPLE X;BONE SPRING, WEST	Apr	4131	9854	18070	30	0
2017	[96674] TRIPLE X;BONE SPRING, WEST	May	3449	4351	11467	31	0
2017	[96674] TRIPLE X;BONE SPRING, WEST	Jun	3000	3545	9890	30	0
2017	[96674] TRIPLE X;BONE SPRING, WEST	Jul	2760	3340	8194	31	0
2017	[96674] TRIPLE X;BONE SPRING, WEST	Aug	2672	3322	7538	31	0
2017	[96674] TRIPLE X;BONE SPRING, WEST	Sep	2351	2640	5727	30	0
2017	[96674] TRIPLE X;BONE SPRING, WEST	Oct	2136	4340	5114	31	0
2017	[96674] TRIPLE X;BONE SPRING, WEST	Nov	2056	3225	4781	30	0
2017	[96674] TRIPLE X;BONE SPRING, WEST	Dec	2008	3220	4505	31	0
2018	[96674] TRIPLE X;BONE SPRING, WEST	Jan	1687	2574	4782	31	0
2018	[96674] TRIPLE X;BONE SPRING, WEST	Feb	1022	2588	8038	28	0

2018	[96674] TRIPLE X;BONE SPRING, WEST	Mar	1631	3289	3643	31	0
2018	[96674] TRIPLE X;BONE SPRING, WEST	Apr	1375	3992	3498	30	0
2018	[96674] TRIPLE X;BONE SPRING, WEST	May	1209	4696	2862	31	0
2018	[96674] TRIPLE X;BONE SPRING, WEST	Jun	952	5807	2168	30	0
2018	[96674] TRIPLE X;BONE SPRING, WEST	Jul	857	6011	1624	31	0
2018	[96674] TRIPLE X;BONE SPRING, WEST	Aug	541	4959	2736	28	0

District I  
1625 N. French Dr., Hobbs, NM 88240  
Phone: (575) 393-6161 Fax: (575) 393-0720  
District II  
811 S. First St., Artesia, NM 88210  
Phone: (575) 748-1283 Fax: (575) 748-9720  
District III  
1000 Rio Brazos Road, Aztec, NM 87410  
Phone: (505) 334-6178 Fax: (505) 334-6170  
District IV  
1220 S. St. Francis Dr., Santa Fe, NM 87505  
Phone: (505) 476-3460 Fax: (505) 476-3462

State of New Mexico  
Energy, Minerals & Natural Resources  
Department  
OIL CONSERVATION DIVISION  
1220 South St. Francis Dr.  
Santa Fe, NM 87505

FORM C-102

Revised August 1, 2011

Submit one copy to appropriate

District Office

☐ AMENDED REPORT

OBBS OCD  
FEB 14 2018  
RECEIVED

WELL LOCATION AND ACREAGE DEDICATION PLAT

<sup>1</sup> API Number <b>70-025-44473</b>	<sup>2</sup> Pool Code <b>98135</b>	<sup>3</sup> Pool Name <b>WC-025 E-09 5243310P; W/PER WC</b>
<sup>4</sup> Property Code <b>320719</b>	<sup>5</sup> Property Name <b>ZEUS UNIT 24S33E0909 STATE</b>	
<sup>6</sup> OGRID No. <b>772043</b>	<sup>7</sup> Operator Name <b>TAP ROCK OPERATING, LLC.</b>	<sup>8</sup> Well Number <b>204H</b>
		<sup>9</sup> Elevation <b>3613'</b>

<sup>10</sup>Surface Location

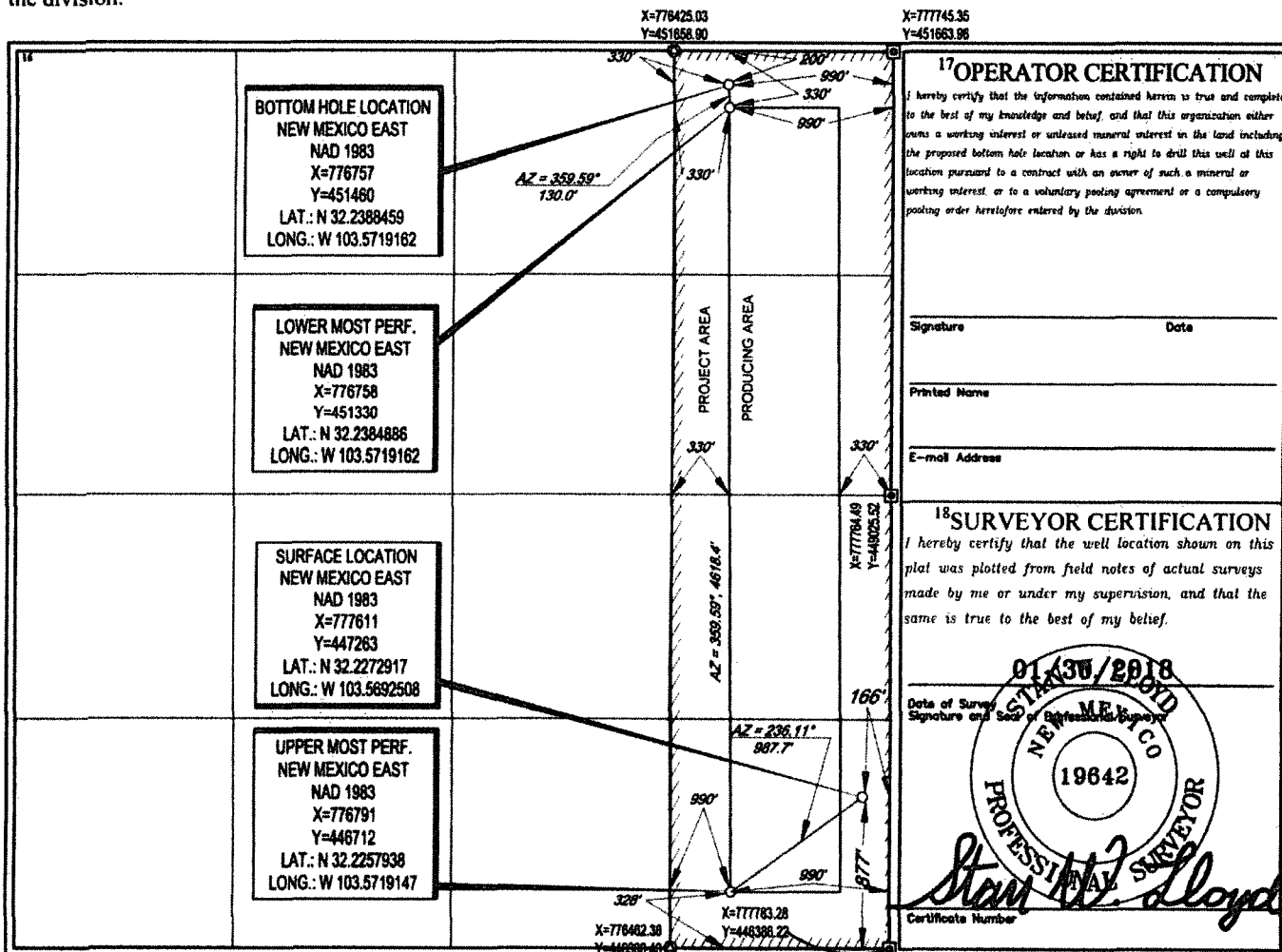
UL or lot no.	Section	Township	Range	Lot Idn	Feet from the	North/South line	Feet from the	East/West line	County
<b>P</b>	<b>9</b>	<b>24-S</b>	<b>33-E</b>	<b>-</b>	<b>877'</b>	<b>SOUTH</b>	<b>166'</b>	<b>EAST</b>	<b>LEA</b>

<sup>11</sup>Bottom Hole Location If Different From Surface

UL or lot no.	Section	Township	Range	Lot Idn	Feet from the	North/South line	Feet from the	East/West line	County
<b>A</b>	<b>9</b>	<b>24-S</b>	<b>33-E</b>	<b>-</b>	<b>200'</b>	<b>NORTH</b>	<b>330'</b>	<b>WEST</b>	<b>LEA</b>

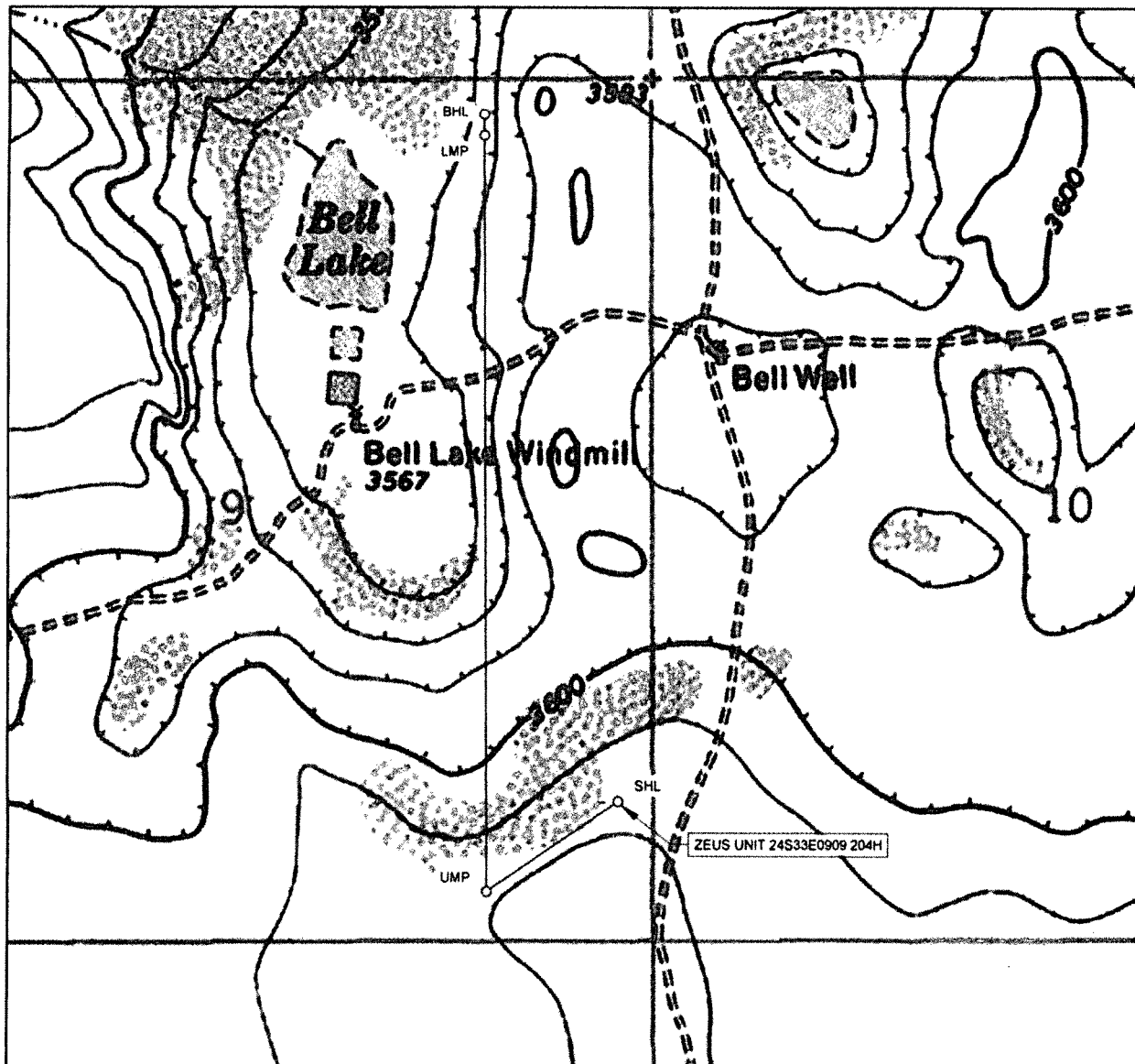
<sup>12</sup> Dedicated Acres <b>160</b>	<sup>13</sup> Joint or Infill	<sup>14</sup> Consolidation Code	<sup>15</sup> Order No.
---	-------------------------------	----------------------------------	-------------------------

No allowable will be assigned to this completion until all interests have been consolidated or a non-standard unit has been approved by the division.





# LOCATION & ELEVATION VERIFICATION MAP



LEASE NAME & WELL NO.: ZEUS UNIT 24S33E0909 204H

SECTION 9 TWP 24-S RGE 33-E SURVEY N.M.P.M.  
 COUNTY LEA STATE NM ELEVATION 3613'  
 DESCRIPTION 877' FSL & 166' FEL

LATITUDE N 32.2272917 LONGITUDE W 103.5692508



SCALE: 1" = 1000'  
 0' 500' 1000'

THIS EASEMENT/SERVITUDE LOCATION SHOWN HEREON HAS BEEN SURVEYED ON THE GROUND UNDER MY SUPERVISION AND PREPARED ACCORDING TO THE EVIDENCE FOUND AT THE TIME OF SURVEY, AND DATA PROVIDED BY TAP ROCK OPERATING, LLC. THIS CERTIFICATION IS MADE AND LIMITED TO THOSE PERSONS OR ENTITIES SHOWN ON THE FACE OF THIS PLAT AND IS NON-TRANSFERABLE. THIS SURVEY IS CERTIFIED FOR THIS TRANSACTION ONLY.

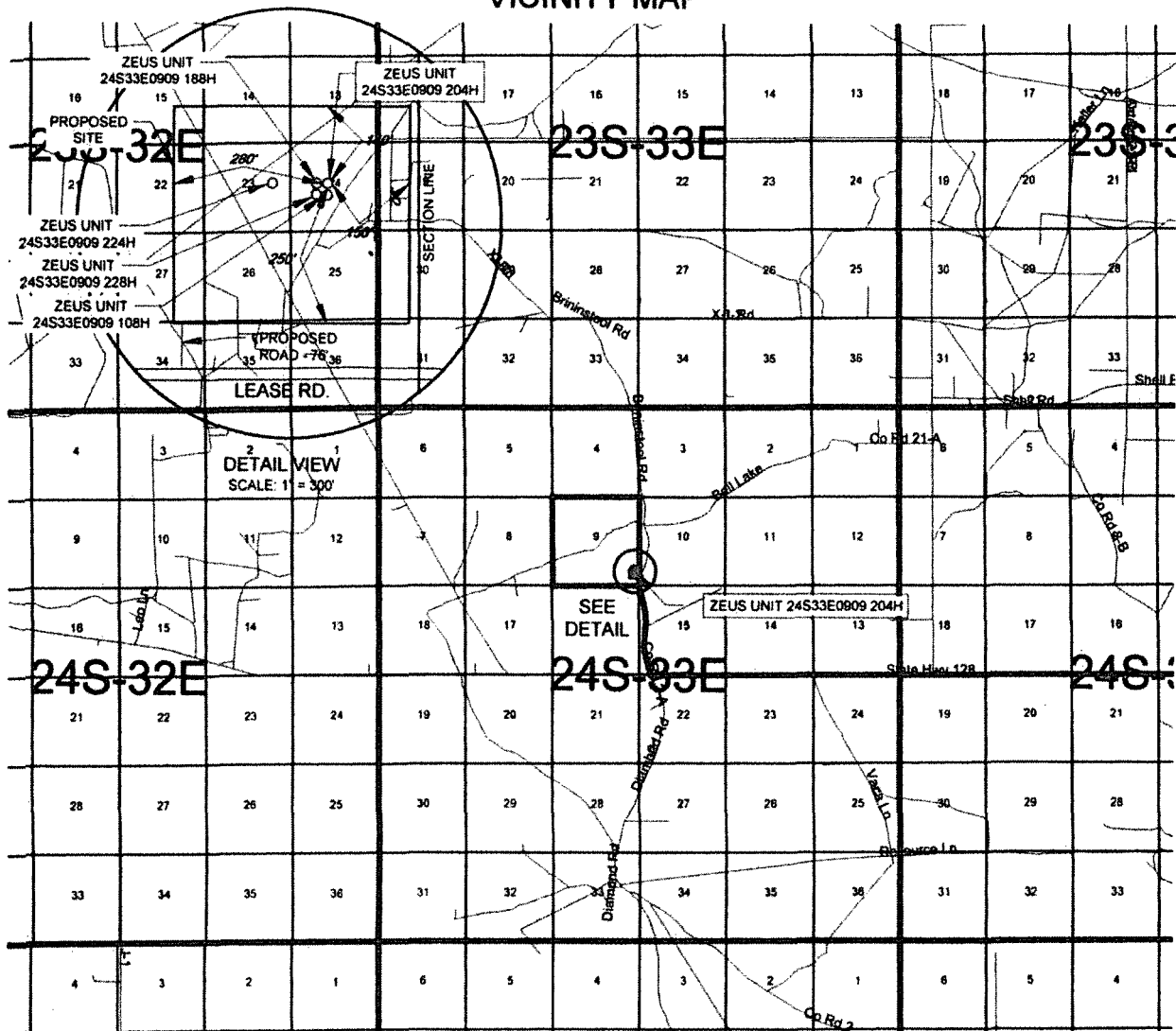
ALL BEARINGS, DISTANCES, AND COORDINATE VALUES CONTAINED HEREON ARE GRID BASED UPON THE NEW MEXICO COORDINATE SYSTEM OF 1983, EAST ZONE, U.S. SURVEY FEET.



**TOPOGRAPHIC**  
 LOYALTY INNOVATION LEGACY

1400 EVERMAN PARKWAY, Ste. 140 • FT. WORTH, TEXAS 76140  
 TELEPHONE: (817) 744-7512 • FAX (817) 744-7554  
 2903 NORTH BIG SPRING • MIDLAND, TEXAS 79705  
 TELEPHONE: (432) 682-1653 OR (800) 787-1653 • FAX (432) 682-1743  
 WWW.TOPOGRAPHIC.COM

# EXHIBIT 2 VICINITY MAP



LEASE NAME & WELL NO.: ZEUS UNIT 24S33E0909 204H

SECTION 9 TWP 24-S RGE 33-E SURVEY N.M.P.M.  
COUNTY LEA STATE NM  
DESCRIPTION 877' FSL & 166' FEL

## DISTANCE & DIRECTION

FROM INT. OF NM-128 W & NM-18S, GO WEST ON NM-128 W  $\pm 23.9$  MILES, THENCE NORTH (RIGHT) ON BRININSTOOL RD.  $\pm 1.1$  MILES, THENCE WEST (LEFT) ON LEASE RD.  $\pm 540$  FEET, THENCE NORTH (RIGHT) ON A PROPOSED RD.  $\pm 90$  FEET TO A POINT  $\pm 364$  FEET SOUTHWEST OF THE LOCATION.



SCALE: 1" = 10000'  
0' 5000' 10000'



**TOPOGRAPHIC**  
LOYALTY INNOVATION LEGACY

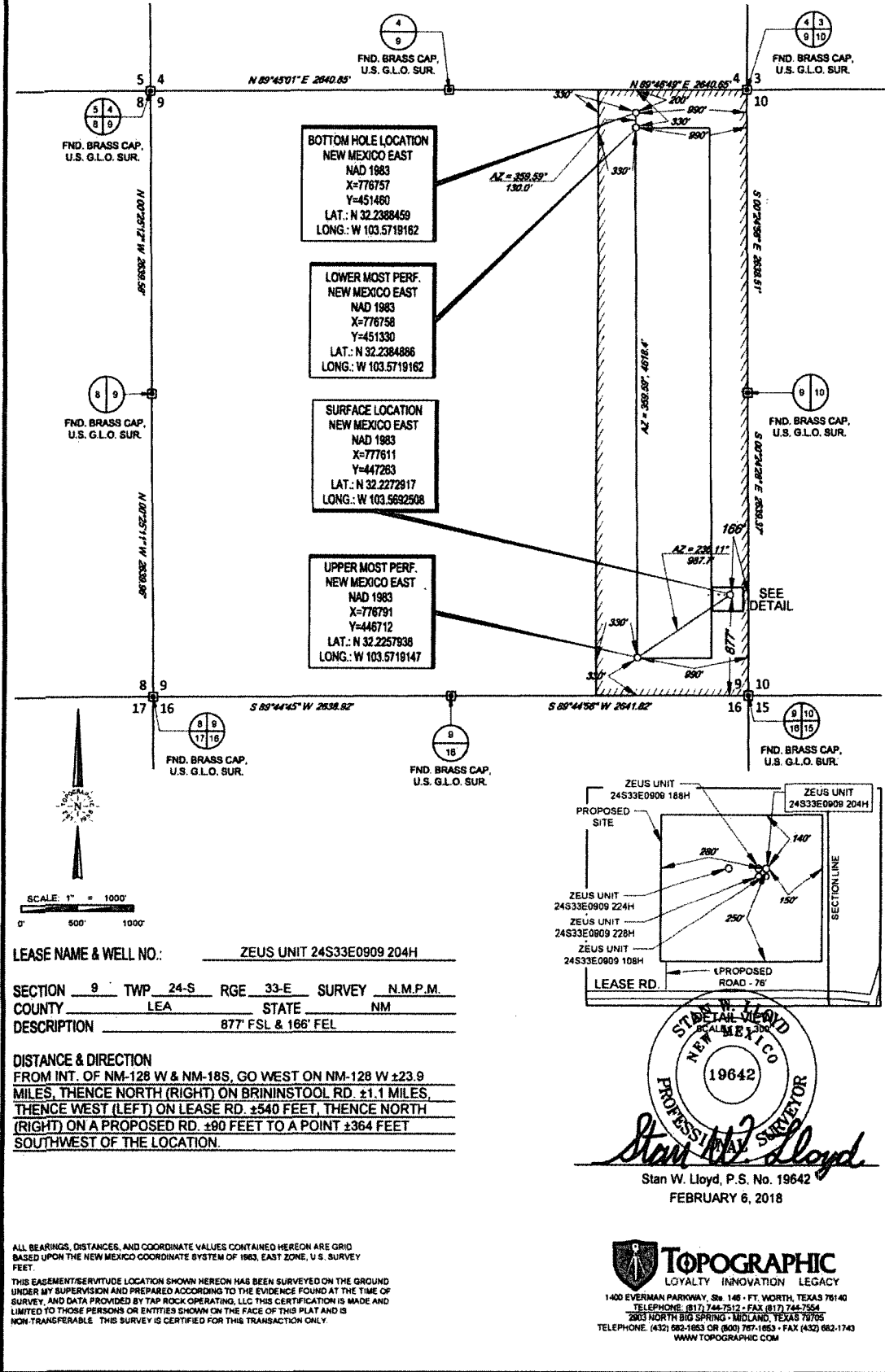
1400 EVERMAN PARKWAY, Ste. 146 • FT. WORTH, TEXAS 76140  
TELEPHONE: (817) 744-7512 • FAX (817) 744-7554  
2903 NORTH BIG SPRING • MIDLAND, TEXAS 79705  
TELEPHONE: (432) 682-1853 OR (800) 767-1853 • FAX (432) 682-1743  
WWW.TOPOGRAPHIC.COM

THIS EASEMENT/SERVITUDE LOCATION SHOWN HEREON HAS BEEN SURVEYED ON THE GROUND UNDER MY SUPERVISION AND PREPARED ACCORDING TO THE EVIDENCE FOUND AT THE TIME OF SURVEY, AND DATA PROVIDED BY TAP ROCK OPERATING, L.L.C. THIS CERTIFICATION IS MADE AND LIMITED TO THOSE PERSONS OR ENTITIES SHOWN ON THE FACE OF THIS PLAT AND IS NON-TRANSFERABLE. THIS SURVEY IS CERTIFIED FOR THIS TRANSACTION ONLY.

ALL BEARINGS, DISTANCES, AND COORDINATE VALUES CONTAINED HEREON ARE GRID BASED UPON THE NEW MEXICO COORDINATE SYSTEM OF 1983, EAST ZONE, U.S. SURVEY FEET

# TAP ROCK EXHIBIT 2A

SECTION 9, TOWNSHIP 24-S, RANGE 33-E, N.M.P.M.  
LEA COUNTY, NEW MEXICO

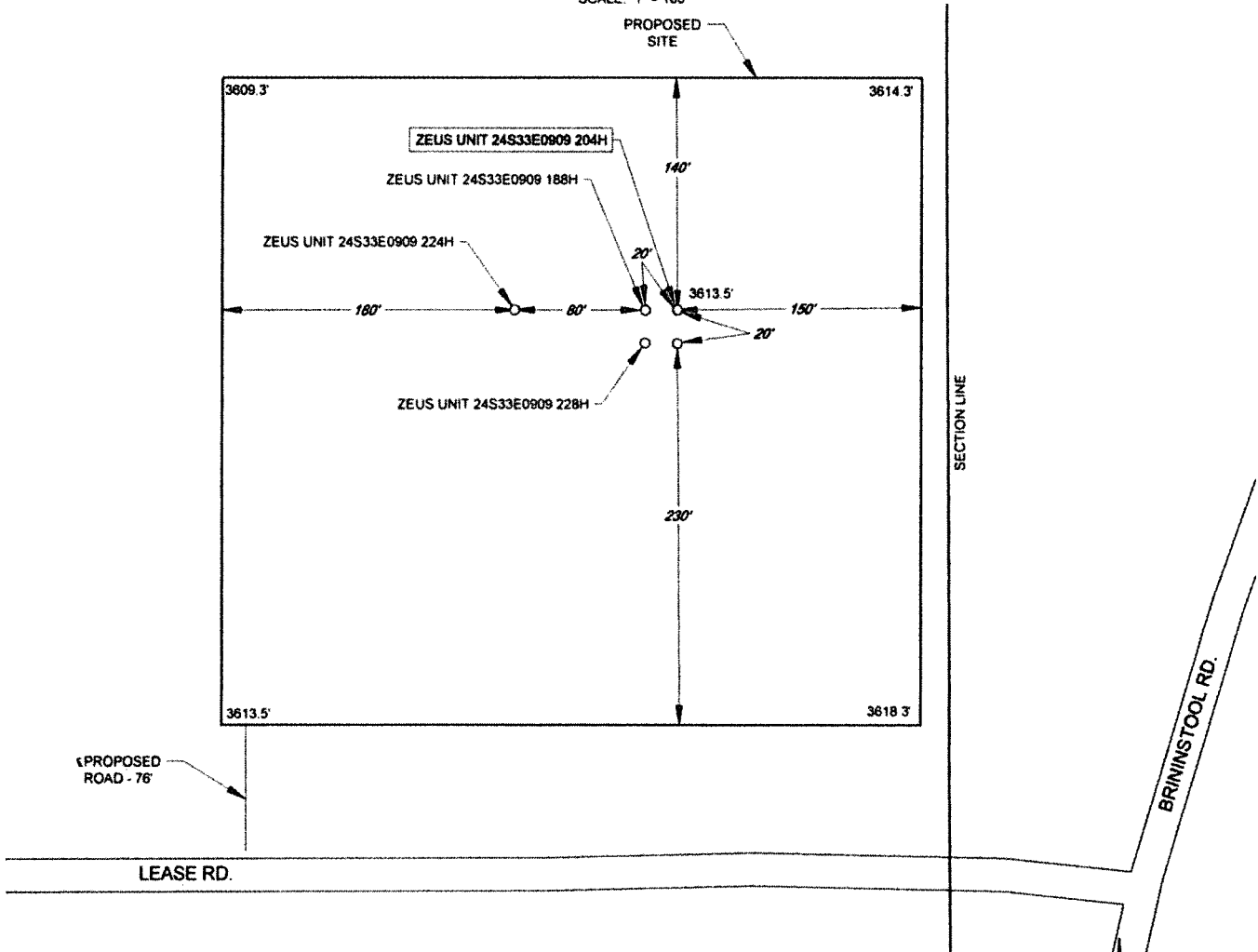


# EXHIBIT 2B

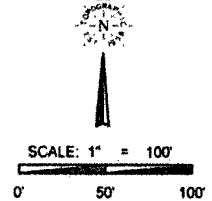


SECTION 9, TOWNSHIP 24-S, RANGE 33-E, N.M.P.M.  
LEA COUNTY, NEW MEXICO

DETAIL VIEW  
SCALE: 1" = 100'



LEASE NAME & WELL NO.: ZEUS UNIT 24S33E0909 204H  
204H LATITUDE N 32.2272917 204H LONGITUDE W 103.5692508



ALL BEARINGS, DISTANCES, AND COORDINATE VALUES CONTAINED HEREON ARE GRID BASED UPON THE NEW MEXICO COORDINATE SYSTEM OF 1983, EAST ZONE, U.S. SURVEY FEET.

THIS PROPOSED PAD SITE LOCATION SHOWN HEREON HAS BEEN SURVEYED ON THE GROUND UNDER MY SUPERVISION AND PREPARED ACCORDING TO THE EVIDENCE FOUND AT THE TIME OF SURVEY, AND DATA PROVIDED BY TAP ROCK OPERATING, LLC. THIS CERTIFICATION IS MADE AND LIMITED TO THOSE PERSONS OR ENTITIES SHOWN ON THE FACE OF THIS PLAT AND IS NON-TRANSFERABLE. THIS SURVEY IS CERTIFIED FOR THIS TRANSACTION ONLY.



**TOPOGRAPHIC**  
LOYALTY INNOVATION LEGACY

1400 EVERMAN PARKWAY, Ste. 148 • FT. WORTH, TEXAS 76140  
TELEPHONE: (817) 744-7512 • FAX: (817) 744-7554  
2903 NORTH BIG SPRING • MIDLAND, TEXAS 79705  
TELEPHONE: (432) 682-1653 OR (800) 787-1653 • FAX: (432) 682-1743  
WWW.TOPOGRAPHIC.COM

ORIGINAL DOCUMENT SIZE: 8.5" X 11"

S:\SURVEY\TAPROCK\ZEUS\_UNIT\FINAL\_PRODUCTS\LO\_ZEUS\_UNIT\_24S33E0909\_204H\_REV1.DWG 2/14/2016 6:15:38 AM bgregory

District I  
1625 N. French Drive, Hobbs, NM 88240  
District II  
811 S. First St., Artesia, NM 88210  
District III  
1000 Rio Brazos Road, Aztec, NM 87410  
District IV  
1220 S. St Francis Dr, Santa Fe, NM  
87505

State of New Mexico  
Energy, Minerals and Natural Resources Department

Form C-107-B  
Revised August 1, 2011

**OIL CONSERVATION DIVISION**  
1220 S. St Francis Drive  
Santa Fe, New Mexico 87505

Submit the original  
application to the Santa Fe  
office with one copy to the  
appropriate District Office.

**APPLICATION FOR SURFACE COMMINGLING (DIVERSE OWNERSHIP)**

OPERATOR NAME: TAP ROCK OPERATING, LLC

OPERATOR ADDRESS: 602 PARK POINT DR, GOLDEN, CO 80401

APPLICATION TYPE:

☒ Pool Commingling ☐ Lease Commingling ☐ Pool and Lease Commingling ☐ Off-Lease Storage and Measurement (Only if not Surface Commingled)

LEASE TYPE: ☐ Fee ☒ State ☐ Federal

Is this an Amendment to existing Order? ☐ Yes ☒ No If "Yes", please include the appropriate Order No. \_\_\_\_\_  
Have the Bureau of Land Management (BLM) and State Land office (SLO) been notified in writing of the proposed commingling  
☒ Yes ☐ No

**(A) POOL COMMINGLING**

Please attach sheets with the following information

(1) Pool Names and Codes	Gravities / BTU of Non-Commingled Production	Calculated Gravities / BTU of Commingled Production		Calculated Value of Commingled Production	Volumes
WC-025 G-09 S243310P; UPPER WOLFCAMP 98135	45/1350	50/1240		No change in value	
WC-025 G-09 S243310P; UPPER WOLFCAMP 98135	55/1250				
TRIPLE X; BONE SPRING, WEST 96674	55/1150				
TRIPLE X; BONE SPRING, WEST 96674	50/1250				
TRIPLE X; BONE SPRING, WEST 96674	44/1200				

- (2) Are any wells producing at top allowables? ☐ Yes ☐ No  
(3) Has all interest owners been notified by certified mail of the proposed commingling? ☒ Yes ☐ No.  
(4) Measurement type: ☒ Metering ☐ Other (Specify)  
(5) Will commingling decrease the value of production? ☐ Yes ☒ No If "yes", describe why commingling should be approved

**(B) LEASE COMMINGLING**

Please attach sheets with the following information

- (1) Pool Name and Code.  
(2) Is all production from same source of supply? ☐ Yes ☐ No  
(3) Has all interest owners been notified by certified mail of the proposed commingling? ☐ Yes ☐ No  
(4) Measurement type: ☐ Metering ☐ Other (Specify)

**(C) POOL and LEASE COMMINGLING**

Please attach sheets with the following information

- (1) Complete Sections A and E.

**(D) OFF-LEASE STORAGE and MEASUREMENT**

Please attached sheets with the following information

- (1) Is all production from same source of supply? ☐ Yes ☐ No  
(2) Include proof of notice to all interest owners.

**(E) ADDITIONAL INFORMATION (for all application types)**

Please attach sheets with the following information

- (1) A schematic diagram of facility, including legal location.  
(2) A plat with lease boundaries showing all well and facility locations. Include lease numbers if Federal or State lands are involved.  
(3) Lease Names, Lease and Well Numbers, and API Numbers.

I hereby certify that the information above is true and complete to the best of my knowledge and belief.

SIGNATURE: Brad Morton TITLE: SE Production Engineer DATE: 10/19/18

TYPE OR PRINT NAME Brad Morton TELEPHONE NO.: 720 460 3518 E-MAIL ADDRESS: bmorton@taprk.com

**Production Summary Report****API: 30-025-41787****MOGI 9 STATE COM #011H**

Month	Pool	Oil(BBLS)	Gas(MCF)	Days P/I
3/1/2018	[96674] TRIPLE X;BONE SPRING, WEST	1631	3289	31
4/1/2018	[96674] TRIPLE X;BONE SPRING, WEST	1375	3992	30
5/1/2018	[96674] TRIPLE X;BONE SPRING, WEST	1209	4696	31
6/1/2018	[96674] TRIPLE X;BONE SPRING, WEST	952	5807	30
7/1/2018	[96674] TRIPLE X;BONE SPRING, WEST	857	6011	31
8/1/2018	[96674] TRIPLE X;BONE SPRING, WEST	541	4959	28
Cum		138219	214408	