

District I
1625 N. French Dr., Hobbs, NM 88240
District II
811 S. First St., Artesia, NM 88210
District III
1000 Rio Brazos Road, Aztec, NM 87410
District IV
1220 S. St. Francis Dr., Santa Fe, NM 87505

State of New Mexico
Energy Minerals and Natural Resources
Department
Oil Conservation Division
1220 South St. Francis Dr.
Santa Fe, NM 87505

Form C-144
Revised April 3, 2017

For temporary pits, below-grade tanks, and multi-well fluid management pits, submit to the appropriate NMOCD District Office.
For permanent pits submit to the Santa Fe Environmental Bureau office and provide a copy to the appropriate NMOCD District Office.

Pit, Below-Grade Tank, or

Proposed Alternative Method Permit or Closure Plan Application

16494
Type of action: ☒ Below grade tank registration
☐ Permit of a pit or proposed alternative method
☐ Closure of a pit, below-grade tank, or proposed alternative method
☐ Modification to an existing permit/or registration
☐ Closure plan only submitted for an existing permitted or non-permitted pit, below-grade tank, or proposed alternative method

PLS 193 42429

Instructions: Please submit one application (Form C-144) per individual pit, below-grade tank or alternative request

Please be advised that approval of this request does not relieve the operator of liability should operations result in pollution of surface water, ground water or the environment. Nor does approval relieve the operator of its responsibility to comply with any other applicable governmental authority's rules, regulations or ordinances.

1.
Operator: Williams Four Corners LLC OGRID #: _____
Address: 1755 Arroyo Drive, Bloomfield, NM, 87413
Facility or well name: San Juan Dakota (BGT 1)
API Number: _____ OCD Permit Number: _____
U/L or Qtr/Qtr SE/NW (F) Section 13 Township 28N Range 11W County: San Juan
Center of Proposed Design: Latitude 36.665597 Longitude -107.956545 NAD83
Surface Owner: ☒ Federal ☐ State ☐ Private ☐ Tribal Trust or Indian Allotment

2.
☐ **Pit:** Subsection F, G or J of 19.15.17.11 NMAC
Temporary: ☐ Drilling ☐ Workover
☐ Permanent ☐ Emergency ☐ Cavitation ☐ P&A ☐ Multi-Well Fluid Management Low Chloride Drilling Fluid ☐ yes ☐ no
☐ Lined ☐ Unlined Liner type: Thickness _____ mil ☐ LLDPE ☐ HDPE ☐ PVC ☐ Other _____
☐ String-Reinforced
Liner Seams: ☐ Welded ☐ Factory ☐ Other _____ Volume: _____ bbl Dimensions: L _____ x W _____ x D _____

Insufficient GW info merit stringent closure.

3.
☒ **Below-grade tank:** Subsection I of 19.15.17.11 NMAC
Volume: 70 bbl Type of fluid: Produced Water
Tank Construction material: Steel
☐ Secondary containment with leak detection ☐ Visible sidewalls, liner, 6-inch lift and automatic overflow shut-off
☒ Visible sidewalls and liner ☐ Visible sidewalls only ☐ Other Tank Installed prior to June 18, 2008
Liner type: Thickness 40 mil ☒ HDPE ☐ PVC ☐ Other _____

4.
☐ **Alternative Method:**
Submittal of an exception request is required. Exceptions must be submitted to the Santa Fe Environmental Bureau office for consideration of approval.

5.
Fencing: Subsection D of 19.15.17.11 NMAC (*Applies to permanent pits, temporary pits, and below-grade tanks*)
☐ Chain link, six feet in height, two strands of barbed wire at top (*Required if located within 1000 feet of a permanent residence, school, hospital, institution or church*)
☐ Four foot height, four strands of barbed wire evenly spaced between one and four feet
☒ Alternate. Please specify Four (4) foot tall hog wire fence with top rail

6.
Netting: Subsection E of 19.15.17.11 NMAC (*Applies to permanent pits and permanent open top tanks*)

- ☐ Screen ☐ Netting ☐ Other _____
☐ Monthly inspections (If netting or screening is not physically feasible)

7.
Signs: Subsection C of 19.15.17.11 NMAC

- ☒ 12"x 24", 2" lettering, providing Operator's name, site location, and emergency telephone numbers
☐ Signed in compliance with 19.15.16.8 NMAC

8.
Variances and Exceptions:

Justifications and/or demonstrations of equivalency are required. Please refer to 19.15.17 NMAC for guidance.

Please check a box if one or more of the following is requested, if not leave blank:

- ☒ Variance(s): Requests must be submitted to the appropriate division district for consideration of approval.
☐ Exception(s): Requests must be submitted to the Santa Fe Environmental Bureau office for consideration of approval.

9.
Siting Criteria (regarding permitting): 19.15.17.10 NMAC

Instructions: The applicant must demonstrate compliance for each siting criteria below in the application. Recommendations of acceptable source material are provided below. Siting criteria does not apply to drying pads or above-grade tanks.

General siting

Ground water is less than 25 feet below the bottom of a low chloride temporary pit or below-grade tank.

- ☒ NM Office of the State Engineer - iWATERS database search; ☐ USGS; ☐ Data obtained from nearby wells

☐ Yes ☒ No
☐ NA

Ground water is less than 50 feet below the bottom of a Temporary pit, permanent pit, or Multi-Well Fluid Management pit.

NM Office of the State Engineer - iWATERS database search; USGS; Data obtained from nearby wells

☐ Yes ☐ No
☒ NA

Within incorporated municipal boundaries or within a defined municipal fresh water well field covered under a municipal ordinance adopted pursuant to NMSA 1978, Section 3-27-3, as amended. (**Does not apply to below grade tanks**)

- Written confirmation or verification from the municipality; Written approval obtained from the municipality

☐ Yes ☐ No

Within the area overlying a subsurface mine. (**Does not apply to below grade tanks**)

- Written confirmation or verification or map from the NM EMNRD-Mining and Mineral Division

☐ Yes ☐ No

Within an unstable area. (**Does not apply to below grade tanks**)

- Engineering measures incorporated into the design; NM Bureau of Geology & Mineral Resources; USGS; NM Geological Society; Topographic map

☐ Yes ☐ No

Within a 100-year floodplain. (**Does not apply to below grade tanks**)

- FEMA map

☐ Yes ☐ No

Below Grade Tanks

Within 100 feet of a continuously flowing watercourse, significant watercourse, lake bed, sinkhole, wetland or playa lake (measured from the ordinary high-water mark).

- Topographic map; Visual inspection (certification) of the proposed site

☐ Yes ☒ No

Within 200 horizontal feet of a spring or a fresh water well used for public or livestock consumption;

- NM Office of the State Engineer - iWATERS database search; Visual inspection (certification) of the proposed site

☐ Yes ☒ No

Temporary Pit using Low Chloride Drilling Fluid (maximum chloride content 15,000 mg/liter)

Within 100 feet of a continuously flowing watercourse, or any other significant watercourse or within 200 feet of any lakebed, sinkhole, or playa lake (measured from the ordinary high-water mark). (Applies to low chloride temporary pits.)

- Topographic map; Visual inspection (certification) of the proposed site

☐ Yes ☐ No

Within 300 feet from a occupied permanent residence, school, hospital, institution, or church in existence at the time of initial application.

- Visual inspection (certification) of the proposed site; Aerial photo; Satellite image

☐ Yes ☐ No

Within 200 horizontal feet of a spring or a private, domestic fresh water well used by less than five households for domestic or stock watering purposes, or 300 feet of any other fresh water well or spring, in existence at the time of the initial application.
NM Office of the State Engineer - iWATERS database search; Visual inspection (certification) of the proposed site

☐ Yes ☐ No

<p>Within 100 feet of a wetland.</p> <ul style="list-style-type: none"> - US Fish and Wildlife Wetland Identification map; Topographic map; Visual inspection (certification) of the proposed site 	<input type="checkbox"/> Yes <input type="checkbox"/> No
<u>Temporary Pit Non-low chloride drilling fluid</u>	
<p>Within 300 feet of a continuously flowing watercourse, or any other significant watercourse, or within 200 feet of any lakebed, sinkhole, or playa lake (measured from the ordinary high-water mark).</p> <ul style="list-style-type: none"> - Topographic map; Visual inspection (certification) of the proposed site 	<input type="checkbox"/> Yes <input type="checkbox"/> No
<p>Within 300 feet from a permanent residence, school, hospital, institution, or church in existence at the time of initial application.</p> <ul style="list-style-type: none"> - Visual inspection (certification) of the proposed site; Aerial photo; Satellite image 	<input type="checkbox"/> Yes <input type="checkbox"/> No
<p>Within 500 horizontal feet of a spring or a private, domestic fresh water well used by less than five households for domestic or stock watering purposes, or 1000 feet of any other fresh water well or spring, in the existence at the time of the initial application;</p> <ul style="list-style-type: none"> - NM Office of the State Engineer - iWATERS database search; Visual inspection (certification) of the proposed site 	<input type="checkbox"/> Yes <input type="checkbox"/> No
<p>Within 300 feet of a wetland.</p> <ul style="list-style-type: none"> - US Fish and Wildlife Wetland Identification map; Topographic map; Visual inspection (certification) of the proposed site 	<input type="checkbox"/> Yes <input type="checkbox"/> No
<u>Permanent Pit or Multi-Well Fluid Management Pit</u>	
<p>Within 300 feet of a continuously flowing watercourse, or 200 feet of any other significant watercourse, or lakebed, sinkhole, or playa lake (measured from the ordinary high-water mark).</p> <ul style="list-style-type: none"> - Topographic map; Visual inspection (certification) of the proposed site 	<input type="checkbox"/> Yes <input type="checkbox"/> No
<p>Within 1000 feet from a permanent residence, school, hospital, institution, or church in existence at the time of initial application.</p> <ul style="list-style-type: none"> - Visual inspection (certification) of the proposed site; Aerial photo; Satellite image 	<input type="checkbox"/> Yes <input type="checkbox"/> No
<p>Within 500 horizontal feet of a spring or a fresh water well used for domestic or stock watering purposes, in existence at the time of initial application.</p> <ul style="list-style-type: none"> - NM Office of the State Engineer - iWATERS database search; Visual inspection (certification) of the proposed site 	<input type="checkbox"/> Yes <input type="checkbox"/> No
<p>Within 500 feet of a wetland.</p> <ul style="list-style-type: none"> - US Fish and Wildlife Wetland Identification map; Topographic map; Visual inspection (certification) of the proposed site 	<input type="checkbox"/> Yes <input type="checkbox"/> No

10.

Temporary Pits, Emergency Pits, and Below-grade Tanks Permit Application Attachment Checklist: Subsection B of 19.15.17.9 NMAC

Instructions: Each of the following items must be attached to the application. Please indicate, by a check mark in the box, that the documents are attached.

- ☒ Hydrogeologic Report (Below-grade Tanks) - based upon the requirements of Paragraph (4) of Subsection B of 19.15.17.9 NMAC
- ☐ Hydrogeologic Data (Temporary and Emergency Pits) - based upon the requirements of Paragraph (2) of Subsection B of 19.15.17.9 NMAC
- ☒ Siting Criteria Compliance Demonstrations - based upon the appropriate requirements of 19.15.17.10 NMAC
- ☒ Design Plan - based upon the appropriate requirements of 19.15.17.11 NMAC
- ☒ Operating and Maintenance Plan - based upon the appropriate requirements of 19.15.17.12 NMAC
- ☒ Closure Plan (Please complete Boxes 14 through 18, if applicable) - based upon the appropriate requirements of Subsection C of 19.15.17.9 NMAC and 19.15.17.13 NMAC

☐ Previously Approved Design (attach copy of design) API Number: _____ or Permit Number: _____

11.

Multi-Well Fluid Management Pit Checklist: Subsection B of 19.15.17.9 NMAC

Instructions: Each of the following items must be attached to the application. Please indicate, by a check mark in the box, that the documents are attached.

- ☐ Design Plan - based upon the appropriate requirements of 19.15.17.11 NMAC
- ☐ Operating and Maintenance Plan - based upon the appropriate requirements of 19.15.17.12 NMAC
- ☐ A List of wells with approved application for permit to drill associated with the pit.
- ☐ Closure Plan (Please complete Boxes 14 through 18, if applicable) - based upon the appropriate requirements of Subsection C of 19.15.17.9 NMAC and 19.15.17.13 NMAC
- ☐ Hydrogeologic Data - based upon the requirements of Paragraph (4) of Subsection B of 19.15.17.9 NMAC
- ☐ Siting Criteria Compliance Demonstrations - based upon the appropriate requirements of 19.15.17.10 NMAC

☐ Previously Approved Design (attach copy of design) API Number: _____ or Permit Number: _____

12.

Permanent Pits Permit Application Checklist: Subsection B of 19.15.17.9 NMAC

Instructions: Each of the following items must be attached to the application. Please indicate, by a check mark in the box, that the documents are attached.

- ☐ Hydrogeologic Report - based upon the requirements of Paragraph (1) of Subsection B of 19.15.17.9 NMAC
☐ Siting Criteria Compliance Demonstrations - based upon the appropriate requirements of 19.15.17.10 NMAC
☐ Climatological Factors Assessment
☐ Certified Engineering Design Plans - based upon the appropriate requirements of 19.15.17.11 NMAC
☐ Dike Protection and Structural Integrity Design - based upon the appropriate requirements of 19.15.17.11 NMAC
☐ Leak Detection Design - based upon the appropriate requirements of 19.15.17.11 NMAC
☐ Liner Specifications and Compatibility Assessment - based upon the appropriate requirements of 19.15.17.11 NMAC
☐ Quality Control/Quality Assurance Construction and Installation Plan
☐ Operating and Maintenance Plan - based upon the appropriate requirements of 19.15.17.12 NMAC
☐ Freeboard and Overtopping Prevention Plan - based upon the appropriate requirements of 19.15.17.11 NMAC
☐ Nuisance or Hazardous Odors, including H₂S, Prevention Plan
☐ Emergency Response Plan
☐ Oil Field Waste Stream Characterization
☐ Monitoring and Inspection Plan
☐ Erosion Control Plan
☐ Closure Plan - based upon the appropriate requirements of Subsection C of 19.15.17.9 NMAC and 19.15.17.13 NMAC

13.

Proposed Closure: 19.15.17.13 NMAC

Instructions: Please complete the applicable boxes, Boxes 14 through 18, in regards to the proposed closure plan.

- Type: ☐ Drilling ☐ Workover ☐ Emergency ☐ Cavitation ☐ P&A ☐ Permanent Pit ☒ Below-grade Tank ☐ Multi-well Fluid Management Pit
☐ Alternative
- Proposed Closure Method: ☒ Waste Excavation and Removal
☐ Waste Removal (Closed-loop systems only)
☐ On-site Closure Method (Only for temporary pits and closed-loop systems)
☐ In-place Burial ☐ On-site Trench Burial
☐ Alternative Closure Method

14.

Waste Excavation and Removal Closure Plan Checklist: (19.15.17.13 NMAC) **Instructions:** Each of the following items must be attached to the closure plan. Please indicate, by a check mark in the box, that the documents are attached.

- ☒ Protocols and Procedures - based upon the appropriate requirements of 19.15.17.13 NMAC
☒ Confirmation Sampling Plan (if applicable) - based upon the appropriate requirements of Subsection C of 19.15.17.13 NMAC
☒ Disposal Facility Name and Permit Number (for liquids, drilling fluids and drill cuttings)
☒ Soil Backfill and Cover Design Specifications - based upon the appropriate requirements of Subsection H of 19.15.17.13 NMAC
☒ Re-vegetation Plan - based upon the appropriate requirements of Subsection H of 19.15.17.13 NMAC
☒ Site Reclamation Plan - based upon the appropriate requirements of Subsection H of 19.15.17.13 NMAC

15.

Siting Criteria (regarding on-site closure methods only): 19.15.17.10 NMAC

Instructions: Each siting criteria requires a demonstration of compliance in the closure plan. Recommendations of acceptable source material are provided below. Requests regarding changes to certain siting criteria require justifications and/or demonstrations of equivalency. Please refer to 19.15.17.10 NMAC for guidance.

Ground water is less than 25 feet below the bottom of the buried waste. - NM Office of the State Engineer - iWATERS database search; USGS; Data obtained from nearby wells	<input type="checkbox"/> Yes <input type="checkbox"/> No <input type="checkbox"/> NA
Ground water is between 25-50 feet below the bottom of the buried waste - NM Office of the State Engineer - iWATERS database search; USGS; Data obtained from nearby wells	<input type="checkbox"/> Yes <input type="checkbox"/> No <input type="checkbox"/> NA
Ground water is more than 100 feet below the bottom of the buried waste. - NM Office of the State Engineer - iWATERS database search; USGS; Data obtained from nearby wells	<input type="checkbox"/> Yes <input type="checkbox"/> No <input type="checkbox"/> NA
Within 100 feet of a continuously flowing watercourse, or 200 feet of any other significant watercourse, lakebed, sinkhole, or playa lake (measured from the ordinary high-water mark). - Topographic map; Visual inspection (certification) of the proposed site	<input type="checkbox"/> Yes <input type="checkbox"/> No
Within 300 feet from a permanent residence, school, hospital, institution, or church in existence at the time of initial application. - Visual inspection (certification) of the proposed site; Aerial photo; Satellite image	<input type="checkbox"/> Yes <input type="checkbox"/> No
Within 300 horizontal feet of a private, domestic fresh water well or spring used for domestic or stock watering purposes, in existence at the time of initial application. - NM Office of the State Engineer - iWATERS database; Visual inspection (certification) of the proposed site	<input type="checkbox"/> Yes <input type="checkbox"/> No
Written confirmation or verification from the municipality; Written approval obtained from the municipality	<input type="checkbox"/> Yes <input type="checkbox"/> No
Within 300 feet of a wetland. US Fish and Wildlife Wetland Identification map; Topographic map; Visual inspection (certification) of the proposed site	<input type="checkbox"/> Yes <input type="checkbox"/> No
Within incorporated municipal boundaries or within a defined municipal fresh water well field covered under a municipal ordinance	

adopted pursuant to NMSA 1978, Section 3-27-3, as amended.

- Written confirmation or verification from the municipality; Written approval obtained from the municipality

☐ Yes ☐ No

Within the area overlying a subsurface mine.

- Written confirmation or verification or map from the NM EMNRD-Mining and Mineral Division

☐ Yes ☐ No

Within an unstable area.

- Engineering measures incorporated into the design; NM Bureau of Geology & Mineral Resources; USGS; NM Geological Society; Topographic map

☐ Yes ☐ No

Within a 100-year floodplain.

- FEMA map

☐ Yes ☐ No

16.
On-Site Closure Plan Checklist: (19.15.17.13 NMAC) *Instructions: Each of the following items must be attached to the closure plan. Please indicate, by a check mark in the box, that the documents are attached.*

- ☐ Siting Criteria Compliance Demonstrations - based upon the appropriate requirements of 19.15.17.10 NMAC
☐ Proof of Surface Owner Notice - based upon the appropriate requirements of Subsection E of 19.15.17.13 NMAC
☐ Construction/Design Plan of Burial Trench (if applicable) based upon the appropriate requirements of Subsection K of 19.15.17.11 NMAC
☐ Construction/Design Plan of Temporary Pit (for in-place burial of a drying pad) - based upon the appropriate requirements of 19.15.17.11 NMAC
☐ Protocols and Procedures - based upon the appropriate requirements of 19.15.17.13 NMAC
☐ Confirmation Sampling Plan (if applicable) - based upon the appropriate requirements of 19.15.17.13 NMAC
☐ Waste Material Sampling Plan - based upon the appropriate requirements of 19.15.17.13 NMAC
☐ Disposal Facility Name and Permit Number (for liquids, drilling fluids and drill cuttings or in case on-site closure standards cannot be achieved)
☐ Soil Cover Design - based upon the appropriate requirements of Subsection H of 19.15.17.13 NMAC
☐ Re-vegetation Plan - based upon the appropriate requirements of Subsection H of 19.15.17.13 NMAC
☐ Site Reclamation Plan - based upon the appropriate requirements of Subsection H of 19.15.17.13 NMAC

17.

Operator Application Certification:

I hereby certify that the information submitted with this application is true, accurate and complete to the best of my knowledge and belief.

Name (Print): Matt Webre

Title: EHS Supervisor

Signature: 

Date: August 21, 2018

e-mail address: matt.webre@williams.com

Telephone: (505) 632-4442

18.
OCD Approval: ☒ Permit Application (including closure plan) ☐ Closure Plan (only) ☒ OCD Conditions (see attachment) *Permit/Plan*

OCD Representative Signature: 

Approval Date: 1/3/19

Title: Environmental Spec

OCD Permit Number: 382 16 494

19.

Closure Report (required within 60 days of closure completion): 19.15.17.13 NMAC

Instructions: Operators are required to obtain an approved closure plan prior to implementing any closure activities and submitting the closure report. The closure report is required to be submitted to the division within 60 days of the completion of the closure activities. Please do not complete this section of the form until an approved closure plan has been obtained and the closure activities have been completed.

☐ Closure Completion Date: _____

20.

Closure Method:

- ☐ Waste Excavation and Removal ☐ On-Site Closure Method ☐ Alternative Closure Method ☐ Waste Removal (Closed-loop systems only)
☐ If different from approved plan, please explain.

21.

Closure Report Attachment Checklist: *Instructions: Each of the following items must be attached to the closure report. Please indicate, by a check mark in the box, that the documents are attached.*

- ☐ Proof of Closure Notice (surface owner and division)
☐ Proof of Deed Notice (required for on-site closure for private land only)
☐ Plot Plan (for on-site closures and temporary pits)
☐ Confirmation Sampling Analytical Results (if applicable)
☐ Waste Material Sampling Analytical Results (required for on-site closure)
☐ Disposal Facility Name and Permit Number
☐ Soil Backfilling and Cover Installation
☐ Re-vegetation Application Rates and Seeding Technique
☐ Site Reclamation (Photo Documentation)

On-site Closure Location: Latitude _____ Longitude _____ NAD: ☐ 1927 ☐ 1983

22.

Operator Closure Certification:

I hereby certify that the information and attachments submitted with this closure report is true, accurate and complete to the best of my knowledge and belief. I also certify that the closure complies with all applicable closure requirements and conditions specified in the approved closure plan.

Name (Print): _____ Title: _____

Signature: _____ Date: _____

e-mail address: _____ Telephone: _____

Variance Request:

Williams requests a variance from Subsection D(3) of 19.15.17.11 New Mexico Administrative Code (NMAC) which states:

The operator shall fence any other pit or below-grade tank to exclude livestock with a four foot fence that has at least four strands of barbed wire evenly spaced in the interval between one foot and four feet above ground level.

Williams proposes to use a four (4) foot tall "hog wire" fence with a top-rail to keep livestock and wildlife away from the below grade tank.

October 20, 2014

Variance Request:

Williams requests a variance request from Subsection E(1) of 19.15.17.13 New Mexico Administrative Code (NMAC) which states:

The operator shall notify the surface owner by certified mail, return receipt requested that the operator plans closure operations at least 72 hours, but not more than one week, prior to any closure operation. Notice shall include well name, API number and location. Evidence of mailing of the notice to the address of the surface owner shown in the county tax records is sufficient to demonstrate compliance with this requirement.

The variance will allow Williams to notify public agencies such as the Bureau of Land Management (BLM), State of New Mexico, local government/municipalities, and/or tribal agencies via email based on their notification preferences

October 20, 2014

**SITING CRITERIA
SUMMARY INFORMATION SHEET
19.15.17.10 NMAC**



LT Environmental, Inc.
846 East 2nd Avenue
Durango, Colorado 81301
T 970.385.1096 / F 303.433.1432

GENERAL INFORMATION

Site Name: Kutz Yard

Pit Identifier: BGT 1

Operator: Williams Four Corners LLC

Date: 4/27/2016

Prepared by: LT Environmental, Inc.

GENERAL SITE LOCATION INFORMATION

Geologic Formation: Nacimiento

SEC: 13 **TWN:** 28N **RNG:** 11W

Soil Type: Doak-Sheppard-Shiprock association **Latitude:** 36.665597 **Longitude:** -107.956545

Annual Precipitation: Bloomfield 8.71"

GENERAL SITING CRITERIA

Is groundwater less than 25 feet below the bottom of below grade tank? - No

See Figure 3 and attached iWaters Data

BELOW GRADE TANK SITING CRITERIA

Within 100 feet of a continuously flowing watercourse? - No
2.67 miles north to the San Juan River

See Figure 1

Within 100 feet of a significant watercourse? - No

See Figure 1 and Figure 3

0.50 miles north to a 3rd order tributary of the San Juan River, 0.55 miles west to a second order tributary of Kutz Wash, 1.27 miles north to a 1st order tributary of the San Juan River.

Within 100 feet of a lakebed, playa lake, or sinkhole? - No

See Figure 2

0.61 miles north to a unnamed stock pond, and 0.45 miles west to an unnamed retention pond.

Within 200 horizontal feet of a spring or a freshwater well used for public or livestock consumption? - No

See Figure 3 and attached iWaters data

The closest water well (SJ02148) Is located 2.27 miles north of the below-grade tank.

ATTACHED DOCUMENTS:

Hydrogeologic Report

Figure 1: Topographic Map

Figure 2: Aerial Photograph

Figure 3: Water Well and Surface Water Features

iWaters Data

ADDITIONAL COMMENTS:



Kutz Yard Hydrogeologic Report for Siting Criteria

General Geology and Hydrology

The San Juan Basin is a typical Rocky Mountain basin with a gently dipping southern flank and a steeply dipping northern flank. Asymmetrically layered Tertiary sandstones and shales, along with Quaternary alluvial deposits, dominate surficial geology (Dane and Bachman, 1965). The below-grade tank is located south of Bloomfield, New Mexico. The Nacimiento Formation of Tertiary age is exposed, along with Quaternary alluvial and aeolian sands within dry washes and arroyos.

Cretaceous and Tertiary sandstones, as well as Quaternary alluvial deposits, serve as the primary aquifers in the San Juan Basin. In most of the area, the Nacimiento Formation lies at the surface. Thickness of the Nacimiento ranges from 418 feet to 2,232 feet, aquifers within the coarser and continuous sandstone bodies are between 0 feet and 1,000 feet deep in this section of the San Juan Basin (Stone et al., 1983). Groundwater within these aquifers flows toward the nearby San Juan River and its tributaries.

The prominent soil type at the below-grade tank is the Doak-Sheppard-Shiprock association. Miles of arroyos, washes, and intermittent streams exist as part of the drainage network toward the San Juan River (www.emnrd.state.nm.us). These features often cut into soil and other unconsolidated materials, contributing to sedimentation downstream. The sudden influx of water from storm events easily erodes soils that cover the area.

Dry and arid weather further prohibit active recharge. The climate of the region is arid, averaging just over 8.71 inches of rainfall annually. As is typical of the southwestern United States monsoonal weather patterns, most precipitation falls from August through October. The heaviest rainfall occurs in the summer in isolated, intense cloudbursts. November through June is relatively dry. Snow generally falls from December to mid-February and averages less than one-half inch in depth. However, most recharge occurs during the winter months during snowmelt periods from the upper elevations (Western Regional Climate Center www.wrcc.dri.edu). The predominant vegetation are sagebrush and grasses with a more restricted pinon-juniper association (Dick-Peddie, 1993).

Site-Specific Hydrogeology

Depth to groundwater is estimated to be greater than 100 feet beneath the bottom of the below-grade tanks. This estimation is based on data from Stone et al. (1983), the United States Geological Survey (USGS) *Groundwater Atlas of the United States*. Additionally, local topography and proximity to surface hydrologic features are taken into consideration. When



available, permitted water well logs and cathodic protection well logs are referenced to infer depth to groundwater near the site.

Local aquifers include sandstones within the Nacimiento Formation, which range from 0 feet to 1,000 feet below ground surface in this area, as well as shallow aquifers within Quaternary alluvial deposits (Stone et al., 1983). The 1,000-foot depth range for Nacimiento aquifers covers an area greater than 20 miles wide in the central San Juan Basin and depth decreases towards the margins of the San Juan Basin.

The proposed site is located in a region dominated by the main channel of the San Juan River, its floodplain, and terrace deposits in the Nacimiento Formation. The below-grade tank site is located on an unnamed mesa near Kutz Canyon at an elevation of approximately 5,830 feet. An elevation difference between the site and the primary channel of Kutz Wash of approximately 300 feet suggests groundwater is greater than 100 feet deep beneath the proposed below-grade tank. Groundwater data available from the New Mexico State Engineer's iWaters database are sparse in this region. No iWaters data points with similar topographical characteristics were located near the below-ground tank.

References

- Dane, C.H. and G. O. Bachman, 1965, *Geologic Map of New Mexico*: U.S. Geological Survey, 1 sheet, scale 1:500,000.
- Dick-Peddie, W.A., 1993, *New Mexico Vegetation – Past, Present and Future*: Albuquerque, New Mexico, University of New Mexico Press, 244 p.
- Stone, W.J., F.P. Lyford, P.F. Frenzel, N.H. Mizell, and E.T. Padgett, 1983, *Hydrogeology and Water Resources of the San Juan Basin, New Mexico*: HR-6 New Mexico Bureau of Geology and Mineral Resources Hydrology Report 6.
- USGS, *Groundwater Atlas of the United States*: Arizona, Colorado, New Mexico, Utah, HA 730-C: (<http://www.pubs.usgs.gov>).
- Western Region Climate Center, 2008, New Mexico climate summaries: Desert Research Institute at <http://www.wrcc.dri.edu/summary/climsmnm.html>.
- New Mexico Energy, Minerals and Natural Resources Department, www.emnrd.state.nm.us.

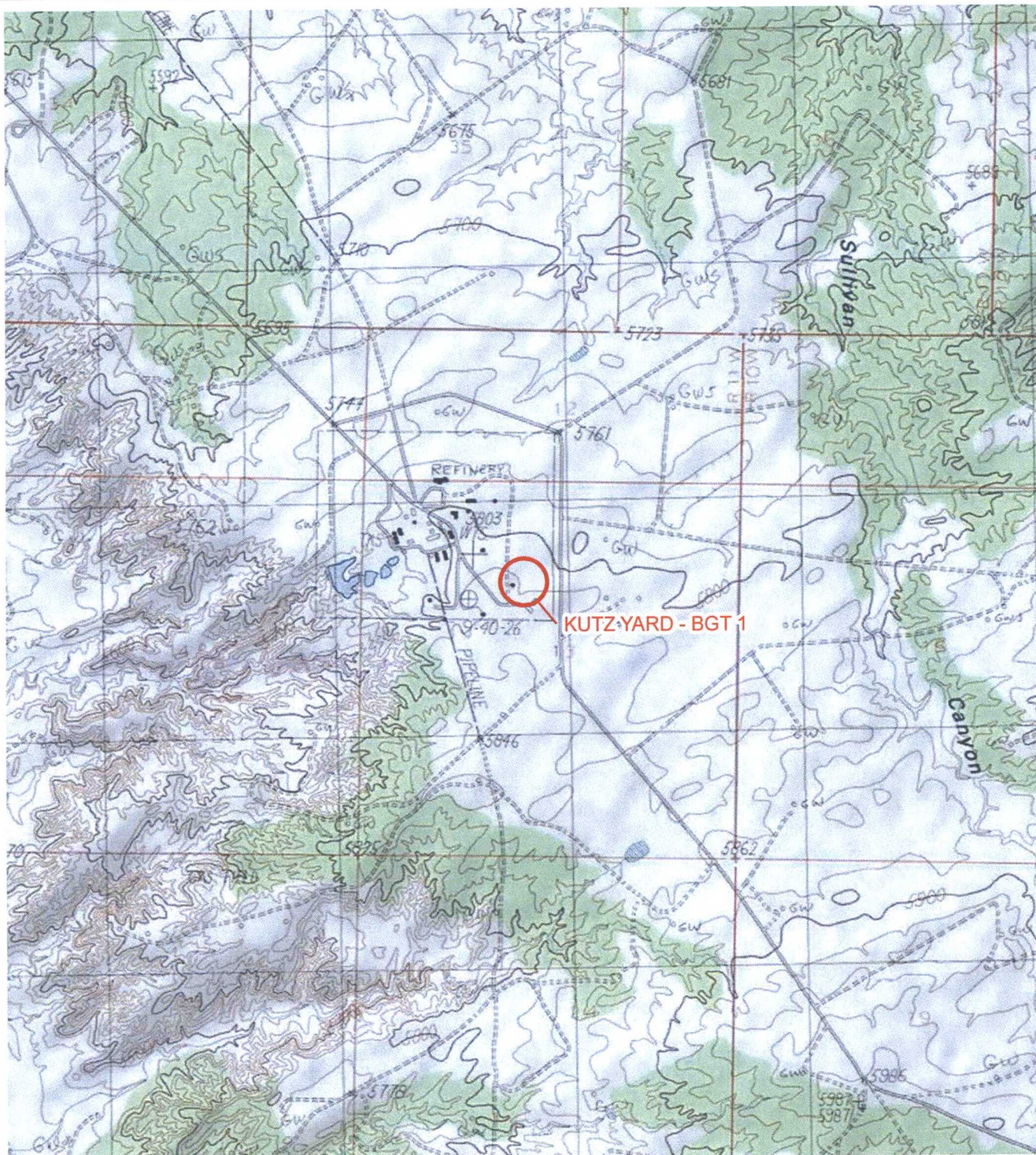


IMAGE COURTESY OF ESRI/USGS

LEGEND



SITE LOCATION

BGT: BELOW GRADE TANK



NEW MEXICO

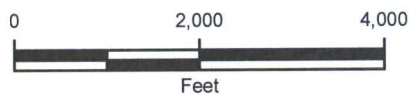





FIGURE 1
TOPOGRAPHIC MAP
KUTZ YARD - BGT 1
SE/NW (F) SEC 13 T28N R11W
SAN JUAN COUNTY, NEW MEXICO
WILLIAMS FOUR CORNERS





IMAGE COURTESY OF ESRI/USGS

LEGEND

-  BGT: BELOW GRADE TANK
-  100-FOOT RADIUS
-  200-FOOT RADIUS

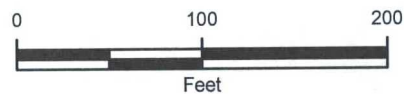


FIGURE 1
AERIAL PHOTOGRAPHIC MAP
KUTZ YARD - BGT 1
SE/NW (F) SEC 13 T28N R11W
SAN JUAN COUNTY, NEW MEXICO
WILLIAMS FOUR CORNERS



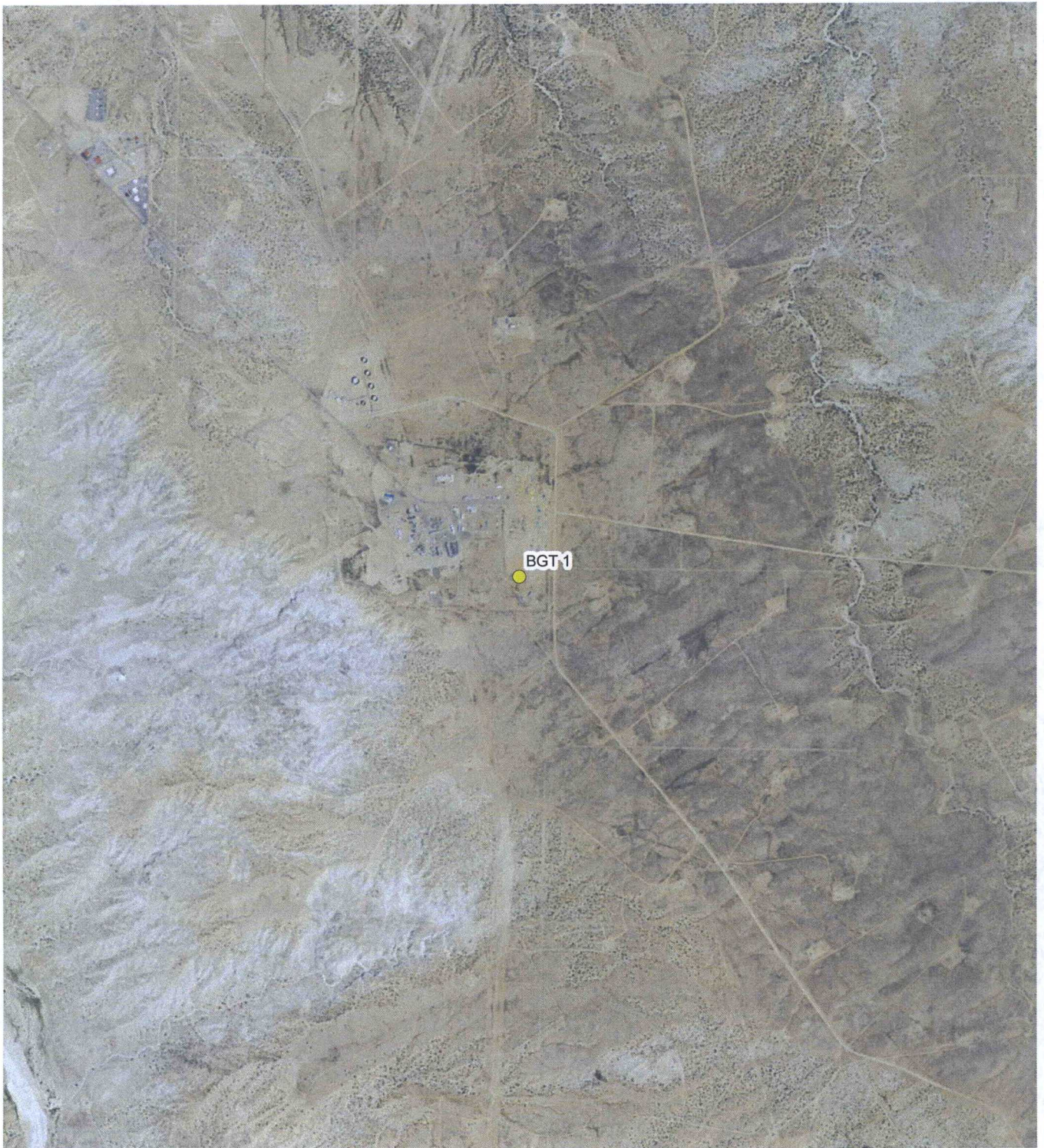


IMAGE COURTESY OF ESRI/USGS

LEGEND

- WATER WELL
- BGT: BELOW GRADE TANK

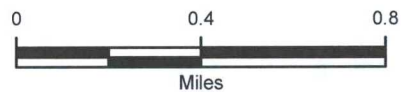


FIGURE 3
WATER WELL MAP
KUTZ YARD - BGT 1
SE/NW (F) SEC 13 T28N R11W
SAN JUAN COUNTY, NEW MEXICO
WILLIAMS FOUR CORNERS





New Mexico Office of the State Engineer Water Column/Average Depth to Water

(A CLW##### in the
POD suffix indicates the
POD has been replaced
& no longer serves a
water right file.)

(R=POD has
been replaced,
O=orphaned,
C=the file is
closed)

(quarters are 1=NW 2=NE 3=SW 4=SE)

(quarters are smallest to largest) (NAD83 UTM in meters)

(In feet)

POD Number	POD Sub- Code basin	County	Q 64	Q 16	Q 4	Sec	Tws	Rng	X	Y	Distance	Depth Well	Depth Water	Water Column
SJ 01808 0-5		SJ	1	1	3	26	29N	11W	234753	4065274*	3570	52	43	9
SJ 02148		SJ		2	4	27	29N	11W	234448	4065184*	3583	305	186	119

Average Depth to Water: **114 feet**

Minimum Depth: **43 feet**

Maximum Depth: **186 feet**

Record Count: 2

UTMNAD83 Radius Search (in meters):

Easting (X): 235756

Northing (Y): 4061847.44

Radius: 3600

***UTM location was derived from PLSS - see Help**

The data is furnished by the NMOSE/ISC and is accepted by the recipient with the expressed understanding that the OSE/ISC make no warranties, expressed or implied, concerning the accuracy, completeness, reliability, usability, or suitability for any particular purpose of the data.

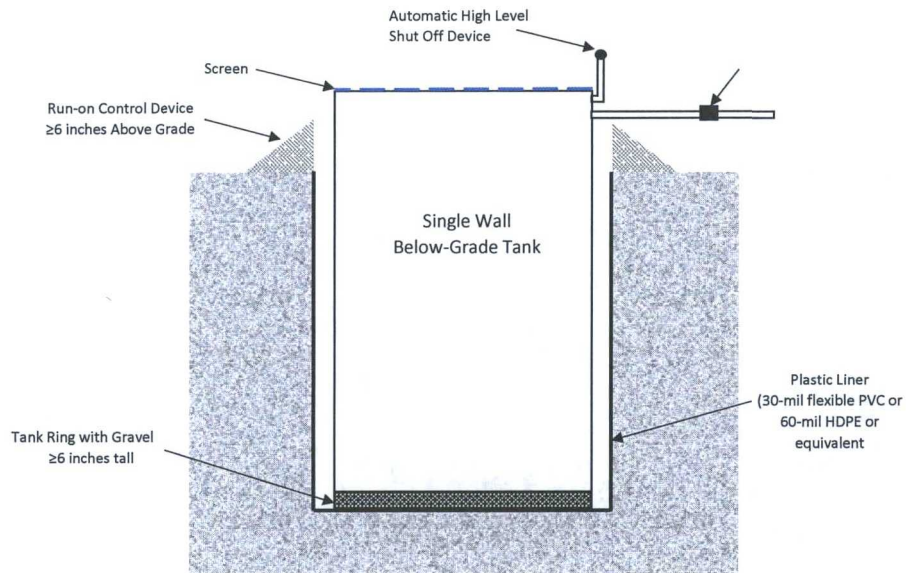
Williams Four Corners LLC
Design and Construction Plan - Below Grade Tanks

In accordance with Rule 19.15.17.11 NMAC of the New Mexico Administrative Code (NMAC), the information within this document describes the design and construction standards to be used by Williams Four Corners LLC (Williams) when installing Below Grade Tanks (BGTs). This is Williams' standard procedure for all BGTs. A separate design and construction plan will be submitted for any BGT which does not conform to this plan.

Pit Rule Citation (NMAC)	Rule Requirement	Operator Requirements
19.15.17.11.A	Design	Williams will design and construct a properly sized and approved BGT to contain liquids and solids, prevent contamination of fresh water and protect public health and environment. A solid riser pipe will be installed to facilitate liquid removal from the tank. The riser shall have a cap or cover and be positioned to prevent standing accumulation of liquids within the riser.
19.15.17.11.C	Construction	Williams will post appropriate signage to include operator name, legal location information, and emergency telephone contact information. The sign will be at least 12-inches x 24-inches with lettering not less than 2-inches in height and be placed on the fence surrounding the BGT.
19.15.17.11.D(1)	Construction	Williams will fence the BGT in a manner that deters unauthorized access and will maintain the fence in good repair. Williams facilities with an exterior perimeter fence will not have a fence installed around the BGT if it is located within the facility exterior perimeter fence.
19.15.17.11.D(3)	Construction	BGT installations will be fenced to protect livestock and wildlife. Fencing will be a minimum of four feet high with four strands of barbed wire spaced in the interval between one foot and four feet above ground. As a variance (if approved with the BGT registration), the fence may be constructed using four 4 foot tall "hog wire" with 1 stand of barbed wire at the top.
19.15.17.11.E	Construction	BGTs will have one-inch (or less) steel mesh (i.e. expanded metal), solid steel covers, or otherwise be constructed to prevent migratory bird contact.
19.15.17.11.I(1)	Design/Construction	Williams will design and construct the BGT to contain liquids associated with the dehydration and compression of natural gas, which will be resistant to the contents of the tank and resistant to damage from ultra violet light.
19.15.17.11.I(2)	Construction	The BGT foundation will be level and free of rocks, debris, sharp edges or irregularities and have a firm compacted bottom and sidewalls that are stable for the soil conditions.
19.15.17.11.I(3)	Construction	BGT installations will include an earthen berm or equivalent alternative at least 6-inches above ground to prevent surface water run-on; and install overflow monitoring device and/or monitor the tank at a frequency to prevent overflow as depicted in Figure 1.
19.15.17.11.I.4(a)	Construction	For BGTs that do not have double walls, Williams will construct the BGT to meet the requirements listed in 19.15.17.11.I.4(a) associated with visual inspection, tank construction, liner, and overflow as depicted in Figure 1. All other BGTs, in which the side walls are not open for visible inspection shall be double walled with leak detection capability as depicted in Figure 2.
19.15.17.11.I.4.(b)	Construction	Buried BGTs will be constructed of steel with double-walls and double-bottom, welded following appropriate API and industry codes, coated with an epoxy based paint. A solid riser pipe will be installed between the space of the double-walls to allow monthly inspection to determine tank integrity.
19.15.17.11.I.4.(c)	Design/Construction	Williams will meet with NMOCD district office before submitting application for an alternative BGT design.
19.15.17.11.I(5)	Construction	A single walled tank (installed prior to June 16, 2008) which has completely open sidewalls for visible inspection and which may or may not have a geomembrane liner, need not meet the above design and construction standards defined in Paragraphs (1) through (4) of Subsection I of 19.15.17.11 NMAC unless the integrity fails. If the integrity fails, the tank will then be closed pursuant to the approved Closure Plan or be retrofitted in accordance with the design drawings (see Figures 1 or 2) or NMOCD approved modification. Retrofitting actions that include changes to the BGT design and construction require an update to the BGT registration.
19.15.17.11.I(6)	Construction	All single walled BGTs must have sidewalls that are completely visible for inspection. Single walled tanks that do not meet this requirement must be retrofitted or closed pursuant to the approved Closure Plan. Retrofitting actions that include changes to the BGT design and construction require an update to the BGT registration.
19.15.17.11.I(7)	Construction	A double walled tank (installed prior to June 16, 2008) need not meet the above design and construction standards defined in Paragraphs (1) through (4) of Subsection I of 19.15.17.11 NMAC unless the integrity fails. If the integrity fails, the tank will then be closed pursuant to the approved Closure Plan or be retrofitted in accordance with the design drawings (see Figures 1 or 2) or NMOCD approved modification. Retrofitting actions that include changes to the BGT design and construction require an update to the BGT registration.

Williams Four Corners LLC
Design and Construction Plan - Below Grade Tanks

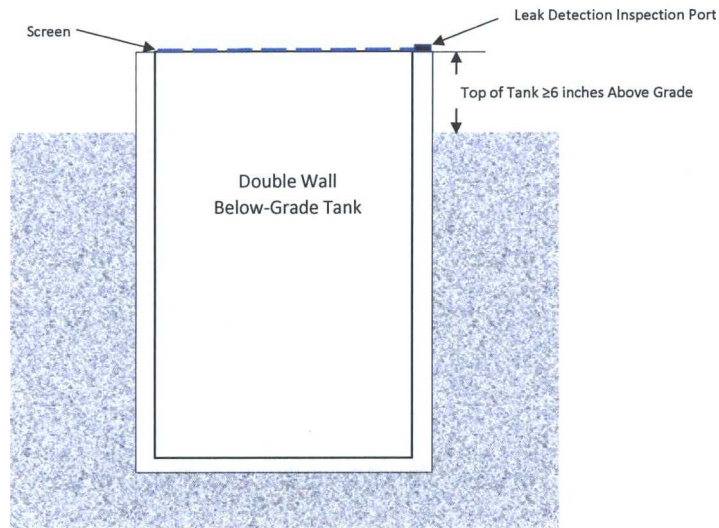
FIGURE 1. BGT DESIGN AND CONSTRUCTION – 19.15.17.11.I.(4)(a) NMAC



1. The BGT's bottom must be elevated a minimum of six inches above the underlying ground surface.
2. The BGT must be underlain with a geomembrane liner to divert leaked liquid to a location that can be visually inspected. Gravel will be contained within a tank ring and not cover the visible portion of the liner.
3. Geomembrane liner shall consist of 30-mil flexible PVC or 60-mil HDPE liner, or an equivalent liner material. The liner must have a hydraulic conductivity no greater than 1×10^{-9} cm/sec, be composed of an impervious, synthetic material that is resistant to petroleum hydrocarbons, salts and acidic and alkaline solutions, and resistant to ultraviolet light. The liner compatibility must comply with USEPA SW-
4. Equipped with a properly operating automatic high-level shut-off control device and manual controls to prevent overflows.

Williams Four Corners LLC
Design and Construction Plan - Below Grade Tanks

FIGURE 2. BGT DESIGN AND CONSTRUCTION – 19.15.17.11.I.(4)(b) NMAC



1. Tank side walls are not open for visible inspection for leaks.
2. Double walled with leak detection capability.

Williams Four Corners LLC
Operations and Maintenance Plan - Below Grade Tanks

In accordance with Rule 19.15.17.12 NMAC of the New Mexico Administrative Code (NMAC), the information within this document describes the operations and maintenance standards to be used by Williams Four Corners LLC (Williams) when operating Below Grade Tanks (BGTs). This is Williams' standard procedure for all BGTs. A separate operations and maintenance plan will be submitted for any BGT which does not conform to this plan.

Pit Rule Citation (NMAC)	Rule Requirement	Operator Requirements
19.15.17.12.A(1)	Integrity	Williams will operate and maintain the BGT to contain liquids and solids and maintain the integrity of the liner, liner systems and secondary containment system to prevent contamination of fresh water and protect public health and environment.
19.15.17.12.A(3)	Waste Management	Williams will not discharge or store any hazardous waste in a BGT. "Hazardous waste" means non-exempt waste that exceeds the minimum standards for waste hazardous by characteristics established in RCRA regulations, 40 CFR 261.21-261.24, or listed hazardous waste as defined in 40 CFR, part 261, subpart D, as amended.
19.15.17.12.A(5)	Release Requirements	If the BGT integrity is compromised: 1. All discharges will be shut off to the BGT. 2. All liquids will be removed as soon as possible but no later than 48 hours after discovery. 3. Williams will notify and report to NMOCD in accordance to 19.15.29 NMAC and all other applicable agencies as require.
19.15.17.12.A(7)	Surface Water Run-on	Williams will maintain a berm or equivalent alternative at least 6-inches above ground to keep surface water run-on from entering the BGT as shown on the Design and Construction Plan.
19.15.17.12.D(1)	Surface Water Run-on and Overflow	Williams will require and maintain an adequate freeboard to prevent overtopping of the BGT.
19.15.17.12.D(2)	Measurable Oil	Any oil or hydrocarbon collecting in the BGT will be removed. Saleable condensate will be returned to the facility or field condensate tank. Slop oil from compression will be removed and transported to an offsite recycle facility.
19.15.17.12.D(3)	Inspection	Williams will inspect the BGT for leakage and damage on a monthly basis. Williams will document the integrity of each tank at least annually and maintain a written record for five years. Inspections may include: 1. Containment berms adequate and no oil present 2. Tank had no visible signs of corrosion 3. Tank valves, flanges, and hatches had no visible leaks 4. No evidence of significant spillage of produced liquids. 5. BGT cover intact and no signs of dead wildlife. 6. Sidewalls are completely visible for single walled BGTs.
19.15.17.12.D(4)	Freeboard	Williams will maintain a 10-inch freeboard to prevent overtopping of the BGT.
19.15.17.12.D(5)	Integrity	If the BGT loses integrity, Williams will repair the damage or close the BGT pursuant to the approved Closure Plan.
19.15.17.12.D(6)	Retrofit or Replacement Requirements	While performing BGT equipment or retrofitting actions, Williams will visually inspect the area beneath the BGT and document any areas that are wet, discolored or showing other evidence of a release on OCD Form C-141. Williams will report the concentration of contaminants to the OCD with respect to the standards set forth in Table I of 19.15.17.13 NMAC. Williams will proceed with the approved Closure Plan if no evidence of impacts are present or concentrations of contaminants are below the OCD standards.

Williams Four Corners LLC
Closure Plan - Below Grade Tanks

In accordance with Rule 19.15.17.13 NMAC of the New Mexico Administrative Code (NMAC), the information within this document describes the closure requirements to be used by Williams Four Corners LLC (Williams) when closing Below Grade Tanks (BGTs). This is Williams' standard procedure for all BGTs. A separate closure plan will be submitted for any BGT closure which does not conform to this plan.

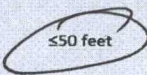
Pit Rule Citation (NMAC)	Rule Requirement	Operator Requirements
19.15.17.13.A	Closure Plan	This plan describes Williams proposed closure methods and the proposed procedures and protocols to implement and complete BGT closure.
19.15.17.13.C(1)		Prior to commencing BGT closure, Williams will obtain a NMOCD approved closure plan before any closure activities start. Williams understands that the NMOCD considers the start of closure for a BGT is when the BGT is being removed from the ground.
19.15.17.13.C(2)		Williams will remove liquids and sludge from a BGT prior to commencing closure actions and will dispose the material in a NMOCD approved facility.
19.15.17.13.C.3(a)		Following removal of the tank and any liner material, Williams will test the soils beneath the BGT in accordance with 19.15.17.13.C.3(a) NMAC. Samples will be collected from beneath the liner and/or BGT for obvious stained or wet soils, or any other evidence of contamination.
19.15.17.13.C.3(b)		If any contaminant concentration is higher than the parameters listed in Table I of 19.15.17.13 NMAC, the NMOCD may require additional delineation upon review of the results and Williams must receive approval before proceeding with closure.
19.15.17.13.C.3(c)		Upon completion of BGT removal, if all contaminant concentrations are less than or equal to the parameters listed in Table I of 19.15.17.13 NMAC, the excavation will be backfilled with non-waste contained, uncontaminated, earthen material.
19.15.17.13.E(1)	Notification	Notice of closure will be given to the surface owner at least 72 hours, but not more than one week, prior to any closure operation via Certified mail. As a variance (if approved with the closure plan), surface owners which are public entities (State, BLM, or Tribal) will be notified by email or phone. The notification of closure will include the following: operators name, well name and API number (if applicable), and location (ULSTR).
19.15.17.13.E(2)		Notice of Closure will be given to the NMOCD office at least 72 hours, but not more than one week, prior to any closure operation via Certified mail. As a variance (if approved with the closure plan), the NMOCD district office will be notified by email or phone. The notification of closure will include the following: operators name, well name and API number (if applicable), and location (ULSTR).
19.15.17.13.F(1)	Reporting	Operator will send the NMOCD a closure report in accordance with 19.15.17.F(1) NMAC within 60 days of closure including the following items: Proof of closure notice, analytical results, backfill information, revegetation, and photo documentation of reclamation. Williams understands that the NMOCD considers the closure date the day in which the BGT is backfilled and re-contoured. Revegetation is still required but, may be addressed in closure report.
19.15.17.13.G.4(a)	Timing	Within 60 days of cessation of operations, Williams will remove liquids and sludge from a BGT prior to implementing a closure method and will dispose of the material in a NMOCD approved facility. Disposal facilities to be used by Williams are listed below based on the listed waste types.
19.15.17.13.G.4(b)		Within 6 months of cessation of operations, Williams will dispose, recycle, reuse, or reclaim the BGT in a NMOCD approved manner. If required, Williams will provide documentation of the disposition of the BGT to the NMOCD. Liner materials will be cleaned to remove soils or contaminated material for disposal as solid waste. Disposal facilities to be used by Williams are listed below based on the listed waste types.
19.15.17.13.H.1(a)	Reclamation	Williams will reclaim the area by substantially restoring the impacted surface area to the condition that existed prior to oil and gas operations by placement of soil cover as described below for 19.15.17.13.H.2 NMAC. The location and associated areas will be recontoured that approximates the original contour and blends with the surrounding topography and revegetate as described below for 19.15.17.13.H.5 NMAC.
19.15.17.13.H.1(b)		Williams will submit an alternative plan to be approved by the NMOCD and written approval from the surface owner before submitting the C-144 application.
19.15.17.13.H.1(c)		If a BGT is removed from an area where production operations will continue, the area will be reclaimed in such a way to minimize dust and erosion to the extent practicable.
19.15.17.13.H.2		Cover will include one foot of suitable material, with chloride concentrations less than 600 mg/kg as analyzed by EPA Method 300.0, to establish vegetation at the site, or the background thickness of topsoil, whichever is greater.
19.15.17.13.H.4		Williams will construct the soil cover to the existing grade to prevent ponding of water and erosion of the cover material.

**Williams Four Corners LLC
Closure Plan - Below Grade Tanks**

Pit Rule Citation (NMAC)	Rule Requirement	Operator Requirements
19.15.17.13.H.5(a) 19.15.17.13.H.5(b) 19.15.17.13.H.5(c) 19.15.17.13.H.5(d) 19.15.17.13.H.5(e)	Reclamation	For those portions of the former BGT area no longer in use with the exception where production operations will continue, the area will be reclaimed as nearly as practicable to their original condition or their final land use. Reclamation will begin as early as practical. The areas will be maintained to minimize dust and topsoils placed and contoured to limit erosion control, maintain stability, and preserve surface-water flow patterns. Williams will seed the disturbed areas the first favorable growing season following closure of the BGT. Williams will comply with obligations imposed by other applicable federal or tribal agencies in which their re-vegetation and reclamation requirements provide equal or better protection of fresh water, human health and the environment. Williams will notify the NMOCD when reclamation and re-vegetation is complete.

Summary of Waste Materials and Disposal Facilities	
Waste Types	Disposal Facility
Steel Tank	San Juan County Landfill; Steel Recycling
Fiberglass Tank	San Juan County Landfill; Bondad Landfill; Re-use
Liner (cleaned – absent soil / sludge)	San Juan County Landfill; Bondad Landfill
Sludge	Envirotech; Industrial Ecosystems Inc.; T-N-T; Bondad Landfill
Liquids (Water / Hydrocarbons)	Basin Disposal; Key Energy; T-N-T
Contaminated Soil	Envirotech; Industrial Ecosystems Inc.; T-N-T; Bondad Landfill
Fencing / Miscellaneous	Re-use or Scrap

Table 1
Closure Criteria for Soils Beneath Below Grade Tanks, Drying Pads Associated with Closed Loop Systems and Pits where contents are Removed

Depth Below Bottom of pit to ground water less than 10,000 mg/l	Constituent	Method	Limit**
 ≤50 feet	Chloride	EPA 300.0	600 mg/kg
	TPH	EPA SW-846 Method 418.1	100 mg/kg
	BTEX	EPA SW-846 8021B or 8260B	50 mg/kg
	Benzene	EPA SW-846 8021B or 8260B	10 mg/kg
51 feet – 100 feet	Chloride	EPA 300.0	10,000 mg/kg
	TPH	EPA SW-846 Method 418.1	2,500 mg/kg
	GRO+DRO	EPA SW-846 Method 8015M	1,000 mg/kg
	BTEX	EPA SW-846 8021B or 8260B	50 mg/kg
	Benzene	EPA SW-846 8021B or 8260B	10 mg/kg
≤100 feet	Chloride	EPA 300.0	20,000 mg/kg
	TPH	EPA SW-846 Method 418.1	2,500 mg/kg
	GRO+DRO	EPA SW-846 Method 8015M	1,000 mg/kg
	BTEX	EPA SW-846 8021B or 8260B	50 mg/kg
	Benzene	EPA SW-846	10 mg/kg