

District I
1625 N. French Dr., Hobbs, NM 88240
District II
811 S. First St., Artesia, NM 88210
District III
1000 Rio Brazos Road, Aztec, NM 87410
District IV
1220 S. St. Francis Dr., Santa Fe, NM 87505

State of New Mexico
Energy Minerals and Natural Resources
Department
Oil Conservation Division
1220 South St. Francis Dr.
Santa Fe, NM 87505

Form C-147
Revised April 3, 2017

Recycling Facility and/or Recycling Containment

Type of Facility: ☒ Recycling Facility ☒ Recycling Containment*

Type of action: ☒ Permit ☒ Registration
☐ Modification ☐ Extension
☐ Closure ☐ Other (explain) PS 1904337267

* At the time C-147 is submitted to the division for a Recycling Containment, a copy shall be provided to the surface owner.

Be advised that approval of this request does not relieve the operator of liability should operations result in pollution of surface water, ground water or the environment. Nor does approval relieve the operator of its responsibility to comply with any other applicable governmental authority's rules, regulations or ordinances.

1.

Operator: Enduring Resources IV, LLC (For multiple operators attach page with information) OGRID #: 372286
Address: 200 Energy Court, Farmington, New Mexico 87401
Facility or well name (include API# if associated with a well): Rodeo Unit 511H API: 30-045-35875 Rodeo Unit 512H API 30-045-35874 Rodeo Unit 513H API 30-045-35873
OCD Permit Number: 3RF-44 (For new facilities the permit number will be assigned by the district office)
U/L or Qtr/Qtr N Section 25 Township 23N Range 9W County: San Juan
Surface Owner: ☒ Federal ☐ State ☐ Private ☐ Tribal Trust or Indian Allotment

2.

☒ **Recycling Facility:**
Location of recycling facility (if applicable): Latitude 36.191179 Longitude 107.744800 NAD83
Proposed Use: ☒ Drilling* ☒ Completion* ☒ Production* ☒ Plugging *
**The re-use of produced water may NOT be used until fresh water zones are cased and cemented*
☐ Other, *requires permit for other uses. Describe use, process, testing, volume of produced water and ensure there will be no adverse impact on groundwater or surface water.*
☒ Fluid Storage
☒ Above ground tanks ☒ Recycling containment ☐ Activity permitted under 19.15.17 NMAC explain type _____
☐ Activity permitted under 19.15.36 NMAC explain type: _____ ☐ Other explain _____
☒ For multiple or additional recycling containments, attach design and location information of each containment
☐ **Closure Report (required within 60 days of closure completion):** ☐ Recycling Facility Closure Completion Date: _____

3.

☒ **Recycling Containment:**
☐ Annual Extension after initial 5 years (attach summary of monthly leak detection inspections for previous year)
Center of Recycling Containment (if applicable): Latitude 36.191179 Longitude 107.744800 NAD83
☒ For multiple or additional recycling containments, attach design and location information of each containment
☒ Lined ☐ Liner type: Thickness 45 mil ☒ LLDPE ☐ HDPE ☐ PVC ☐ Other _____
☒ String-Reinforced
Liner Seams: ☒ Welded ☐ Factory ☐ Other *Per AST Volume: 40,280 bbl Dimensions: Radius 80' x Height 10'
☐ Recycling Containment Closure Completion Date: _____

NM8CD

JAN 23 2019

4.

Bonding:

- ☒ Covered under bonding pursuant to 19.15.8 NMAC per 19.15.34.15(A)(2) NMAC (These containments are limited to only the wells owned or operated by the owners of the containment.)
- ☐ Bonding in accordance with 19.15.34.15(A)(1). Amount of bond \$ _____ (work on these facilities cannot commence until bonding amounts are approved)
- ☐ Attach closure cost estimate and documentation on how the closure cost was calculated.

5.

Fencing:

- ☒ Four foot height, four strands of barbed wire evenly spaced between one and four feet
- ☐ Alternate. Please specify _____

6.

Signs:

- ☒ 12"x 24", 2" lettering, providing Operator's name, site location, and emergency telephone numbers
- ☐ Signed in compliance with 19.15.16.8 NMAC

7.

Variances:

Justifications and/or demonstrations that the proposed variance will afford reasonable protection against contamination of fresh water, human health, and the environment.

Check the below box only if a variance is requested:

- ☐ Variance(s): Requests must be submitted to the appropriate division district for consideration of approval. If a Variance is requested, include the variance information on a separate page and attach it to the C-147 as part of the application.

If a Variance is requested, it must be approved prior to implementation.

8.

Siting Criteria for Recycling Containment

Instructions: The applicant must provide attachments that demonstrate compliance for each siting criteria below as part of the application. Potential examples of the siting attachment source material are provided below under each criteria.

General siting**Ground water is less than 50 feet below the bottom of the Recycling Containment.**

NM Office of the State Engineer - iWATERS database search; USGS; Data obtained from nearby wells

☐ Yes ☒ No
☐ NA

Within incorporated municipal boundaries or within a defined municipal fresh water well field covered under a municipal ordinance adopted pursuant to NMSA 1978, Section 3-27-3, as amended.

☐ Yes ☒ No
☐ NA

- Written confirmation or verification from the municipality; written approval obtained from the municipality

Within the area overlying a subsurface mine.

☐ Yes ☒ No

- Written confirmation or verification or map from the NM EMNRD-Mining and Minerals Division

Within an unstable area.

☐ Yes ☒ No

- Engineering measures incorporated into the design; NM Bureau of Geology & Mineral Resources; USGS; NM Geological Society; topographic map

Within a 100-year floodplain. FEMA map

☐ Yes ☒ No

Within 300 feet of a continuously flowing watercourse, or 200 feet of any other significant watercourse, or lakebed, sinkhole, or playa lake (measured from the ordinary high-water mark).

☐ Yes ☒ No

- Topographic map; visual inspection (certification) of the proposed site

Within 1000 feet from a permanent residence, school, hospital, institution, or church in existence at the time of initial application.

☐ Yes ☒ No

- Visual inspection (certification) of the proposed site; aerial photo; satellite image

Within 500 horizontal feet of a spring or a fresh water well used for domestic or stock watering purposes, in existence at the time of initial application.

☐ Yes ☒ No

- NM Office of the State Engineer - iWATERS database search; visual inspection (certification) of the proposed site

Within 500 feet of a wetland.

☐ Yes ☒ No

- US Fish and Wildlife Wetland Identification map; topographic map; visual inspection (certification) of the proposed site

9.

Recycling Facility and/or Containment Checklist:

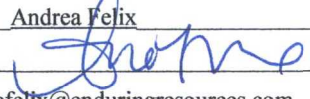
Instructions: Each of the following items must be attached to the application. Indicate, by a check mark in the box, that the documents are attached.

- ☒ Design Plan - based upon the appropriate requirements.
- ☒ Operating and Maintenance Plan - based upon the appropriate requirements.
- ☒ Closure Plan - based upon the appropriate requirements.
- ☒ Site Specific Groundwater Data -
- ☒ Siting Criteria Compliance Demonstrations -
- ☒ Certify that notice of the C-147 (only) has been sent to the surface owner(s)

10.

Operator Application Certification:

I hereby certify that the information and attachments submitted with this application are true, accurate and complete to the best of my knowledge and belief.

Name (Print): Andrea Felix Title: Regulatory Manager
 Signature:  Date: 1-23-2019
 e-mail address: afelix@enduringresources.com Telephone: 505-386-8205

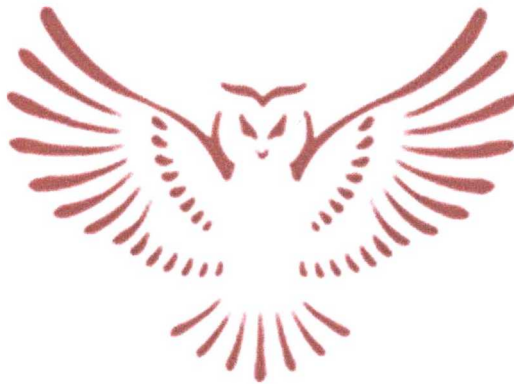
11.

OCD Representative Signature:  Approval Date: 2/12/19

Title: Environmental Spec OCD Permit Number: 3RF-44

- ☐ OCD Conditions
- ☐ Additional OCD Conditions on Attachment

Enduring Resources IV, LLC
200 Energy Court
Farmington, NM 87401



Rodeo Unit 511H
Water Recycle Facility / Containment

Submitted by:
Andrea Felix, Regulatory Manager
January 23rd, 2019

Table of Contents

1. Introduction.....	1
2. Siting Criteria.....	1-2
3. Design and Construction Plan.....	2-4
3.1 Confinement of Produced Water.....	2
3.2 Foundation Construction.....	3
3.3 Liner Construction.....	3
3.4 Leak Detection System.....	3
3.5 Top Soil.....	3
3.6 Signage.....	4
3.7 Fencing.....	4
3.8 Wildlife Protection.....	4
4. Maintenance and Operating Plan.....	4-5
5. Closure Plan.....	5-6
6. Attachment A- Multiple Containment Design Drawing.....	7
7. Attachment B- Location Plat and driving directions.....	8-9
8. Attachment C- MO-TE Drilling Log.....	10
9. Topo Map.....	11
10. Aerial Map.....	12
11. AST Information.....	13-15
12. Migratory Bird Plan.....	16-19

Enduring Resources IV, LLC
Rodeo Unit 511H
Recycling Facility /Containment
Variance Request for 19.15.34 NMAC

NMOCB
FEB 08 2019
DISTRICT III

Enduring Resources IV, LLC is requesting variances to the below listed items as outlined in 19.15.34.16 NMAC. This Recycling Containment / Facility will consist of self-contained free standing structures instead of a lined earthen pit. The variances requested below will provide equal or better protection of fresh water, public health and the environment.

Liner Anchoring: Enduring Resources requests a variance to NMAC 19.15.34.12 (3) which applies to a lined earthen pit. This statute is not applicable to a circular steel AST with liners clamped to the top of the steel shell. We believe this will provide equal or better protection than the requirements listed in 19.15.34.12.E NMAC.

Inside / Outside levee slopes: The containment is an AST and not an in ground pond and therefore will not have inside / outside levee slopes. The AST is a self-contained free standing structure that will provide equal or better protection than the requirements listed in 19.15.34.12 NMAC.

Minimized liner seams: Enduring Resources requests a variance to NMAC 19.15.34.12 (5) which applies to a lined square excavation. This statute is not applicable to a steel AST that has a circular vertical shell without corners. We believe this will provide equal or better protection than the requirements listed in 19.15.34.12.E NMAC.

Netting: Enduring Resources, LLC (Enduring) is proposing to mitigate migratory birds pursuant to the attached *Migratory Bird Mitigation Plan* as required in 19.15.34.12.E. We believe this will provide equal or better protection than the requirements listed in 19.15.34.12.E NMAC.

1. Introduction

Operator	Enduring Resources IV, LLC
OGRID	372286
Facility Name	Rodeo Unit 511H
Facility Type	Recycling Facility & Recycling Containment
Location	Section 25, 23N, R9W San Juan County
Surface Owner	Federal- BLM

In accordance with NMAC 19.15.34, Enduring Resources IV, LLC (Enduring) requests the registration of a recycling containment and permit for a recycling facility. The facility and containments will be used to treat and recycle produced water for re-use in Enduring completion activities.

The surface owner of this location is the BLM and as part of the Rodeo Unit POD (plan of development) BLM has been notified and has approved of the placement of this facility/containment on their lands as Enduring is the operator of the applicable oil and gas mineral rights. A copy of this C-147 application has been provided to the BLM.

2. Siting Criteria

The Rodeo Unit 511H facility / containment is located in accordance with 19.15.34.11 as documented below:

- **Ground water is greater than 50 feet below the bottom of the containment**
A test well was drilled on the Rodeo Unit 511H on 1-16-2019 per the attached Mo-TE drilling Log which indicated a ground water depth greater than 100 feet.
NM Office of the State Engineer - iWATERS database search; USGS; Data obtained from nearby wells is shown on the aerial or topo maps provided.
- **Within incorporated municipal boundaries or within a defined municipal fresh water well field covered under a municipal ordinance adopted pursuant to NMSA 1978, Section 3-27-3, as amended**
The recycling facility / containment is not located within any incorporated municipal boundaries within a defined municipal fresh water well field covered by a municipal ordinance adopted pursuant to Section 3-27-3 NMSA 1978, as amend.
- **Within the area overlying a subsurface mine**
The recycling facility / containment is not located within an area overlaying a subsurface mine according to NM EMNRD Mining and Minerals Divisions database there are no subsurface mines in Section 25, T23N, R9W San Juan County.

- **Within an unstable area**
The recycling facility / containment is not located within an unstable area and is not on the side of a hill.
- **Within a 100-year floodplain. FEMA map**
The recycling facility / containment is not located within a 100-year floodplain as shown on the aerial or topo maps provided.
- **Within 300 feet of a continuously flowing watercourse, or 200 feet of any other significant watercourse, or lakebed, sinkhole, or playa lake (measured from the ordinary high-water mark)**
The recycling facility / containment is not located within 300 feet of a continuously flowing watercourse, or 200 feet of any other significant watercourse, or lakebed, sinkhole, or playa lake as shown on the aerial or top maps provided.
- **Within 1000 feet from a permanent residence, school, hospital, institution, or church in existence at the time of initial application**
The recycling facility / containment is not located within 1000 feet from a permanent residence, school, hospital, institution, or church in existence at the time of initial application as shown on the aerial or topo maps provided.
- **Within 500 horizontal feet of a spring or a fresh water well used for domestic or stock watering purposes, in existence at the time of initial application**
The recycling facility / containment is not located within 500 horizontal feet of a spring or fresh water well used for domestic or stock watering purposes in existence at the time of initial application as shown on the aerial or topo maps provided.
- **Within 500 feet of a wetland**
The recycling facility / containment is not located within 500 feet of a wetland as shown on the aerial or topo maps provided.

3. Design and Construction Plan

In accordance with Rule 19.15.34.12 NMAC the following Design and Construction Plan describes Enduring's Rodeo Unit 511H recycling facility / containment and will assist Enduring personnel to ensure compliance with the minimum design and construction requirements as defined by NMOCD as outlined in 19.15.34.12 NMAC.

3.1 Confinement of Produced Water

The recycling facility / containment has been designed to ensure the confinement of produced water, the prevention of releases, and the prevention of overtopping due to wave action or rainfall.

3.2 Foundation Construction

The recycling facility / containment has been designed, and will be constructed, to have a properly constructed foundation with an unyielding base, free of rocks debris and sharp edges. Geotextile will be placed under the secondary liner in order to reduce stress-strain on it.

3.3 Liner Construction

The recycling facility / containment is designed to have a 45 mil, string reinforced LLDPE liner as the primary liner, and a 40 mil LLDPE liner as the secondary liner. This recycling facility/containment is an above grade tank, and the liner will be secured to the top of the AST using bolted steel clamps. The primary liner will be a 45-mil, LLDPE, string reinforced liner that is composed of material that is resistant to ultraviolet light, petroleum hydrocarbons, salt solutions, acidic solutions and alkaline solutions. Liner compatibility meets the conductivity requirement of 1×10^{-9} cm/sec. The secondary liner will be a 40-mil, LLDPE, string reinforced liner that is composed of material that is resistant to ultraviolet light, petroleum hydrocarbons, salt solutions, acidic solutions and alkaline solutions. Liner compatibility meets the conductivity requirement of 1×10^{-9} cm/sec. Liner material will be factory welded by the manufacturer by qualified personnel. The liner material will overlap a minimum of 4 inches. All welding and testing will be completed by qualified personnel.

External discharge or suction lines will not penetrate the liner. The liner will be protected from excessive hydrostatic force or mechanical damage, and the point of discharge and suction from the containment is specifically designed to eliminate damage from fluid forces.

The recycling facility / containment is above ground and will not be subject to water run-on, Enduring will be constructing an earthen berm around the perimeter of the location to serve as an extra precaution.

3.4 Leak Detection System

The recycling facility / containment has been designed with a leak detection system made up of a conductive geocomposite material, at least 200 mm thick. The pond is comprised of a 40 mil liner base, with a 200 mm geocomposite material for leak detection, and overlaid with an additional 45 mil liner. The bottom of the containment will have a 6" PVC pipe inserted between the liners. The pipe will be checked during the weekly inspection for the presence of water using a water level meter. In the event water is detected in the leak detection sump, the water will be immediately pumped out to determine if the water will return.

3.5 Top Soil

The location is an approved well pad location for the Rodeo Unit 511H well and top soil will be stripped and stored around the perimeter of the location for reclamation purposes.

The top soil being stored is not within 100 feet of a continuously flowing watercourse or significant watercourse; within 200 feet from a lakebed, sinkhole, or playa lake; within 100 feet of a wetland or within a 100-year flood plain as shown on the aerial or topo maps provided.

3.6 Signage

The recycling facility / containment will have a sign no less than 12" by 24" with lettering not less than 2" in height in a conspicuous place near the recycling facility / containment. The sign will contain the operator's name, location of the recycling facility / containment by quarter-quarter or unit letter, Section, Township, Range and emergency phone numbers.

3.7 Fencing

The recycling facility / containment will be surrounded by a fence four feet in height that has at least four strands of barbed wire evenly spaced in the interval between one foot and four feet above the ground and maintained in good repair. All gates associated with the fence will be closed and locked when responsible personnel are not onsite.

3.8 Wildlife Protection

Enduring Resources will install a bird deterrent system pursuant to the attached *Migratory Bird Mitigation Plan*. The recycling facility / containment will be inspected weekly for dead migratory birds, and will be reported.

4. Maintenance and Operating Plan

In accordance with Rule 19.15.34.13 NMAC the following Maintenance and Operating Plan describes Enduring's Rodeo Unit 511H recycling facility / containment and will assist Enduring personnel and contractors to ensure compliance with the requirements as defined by NMOCB as outlined in 19.15.34.13 NMAC

- Enduring will inspect the recycling facility / containment and associated leak detection systems weekly while the containment is holding fluids. An inspection log will be maintained by Enduring, and will be available for review upon request by the division.
- Enduring will remove any visible oil from the surface of the recycling facility / containment upon discovery.
- Enduring will maintain a minimum of three feet of freeboard in the containment at all times.
- The injection and withdrawal of fluids from the containment shall be accomplished through a header, diverter or other hardware that prevents damage to the liner by erosion, fluid jets or impact from installation and removal of hoses or pipes.
- If a leak is discovered in the containments primary liner above the liquid level in the containment, Enduring will repair the primary liner within 48 hours, or request an extension on repair within the 48-hour time limit.
- If a leak is discovered in the containments primary liner below the liquid level in the containment, Enduring will notify the division office of the leak, remove all fluids above the leak level, and repair the primary liner within 48 hours, or request an extension on repair within the 48-hour time limit.
- The recycling facility / containment will be operated in such a way to prevent the collection of surface water.

- An oil absorbent boom or other device will be onsite to contain an unanticipated release.
- The recycling facility / containment will not be used for the storage or discharge of hazardous waste.
- Enduring will consider the recycling containment to have ceased operations if less than 20% of the total fluid volume is used every six (6) months following the first withdrawal of produced water for use. Enduring will report cessation of operations to the appropriate division district office. If additional time is needed for closure, Enduring will request an extension from the appropriate division district office prior to the expiration of the initial six (6) month time period.

5. Closure Plan

In accordance with Rule 19.15.34.14 NMAC the following Closure Plan describes Enduring's Rodeo Unit 511H recycling facility / containment closure requirements.

- Upon cessation of operations Enduring will remove all fluids within 60 days of the official date of cessation.
- Enduring will close the produced water containment within six (6) months from the official date of cessation. If Enduring will require more than 6 months to complete closure activities, an extension request will be filed prior to the six (6) month time limit for closure.
- Within 60 days of final closure completion, Enduring will submit a closure report on form C-147, including required attachments, to document all closure activities including sampling results. The closure report will certify that all information in the report and attachments is correct and that Enduring has complied with all applicable closure requirements and conditions specified in division rules or directives.
- Closure activities will consist of the following:
 - a. Removal of all containment contents
 - b. Removal of liners and associated leak detection equipment for disposal at a division approved facility.
 - c. Removal of all equipment associated with the continued operation of the recycling containment.
 - d. Enduring will test the soils beneath the containment for contamination with a five-point composite sample which includes stained or wet soils, if any, and that sample shall be analyzed for the constituents listed in table I.

- e. If the closure sample collected return results equal to or less than the parameters listed in *Table I* closure will be completed and backfill with begin with non-waste containing, uncontaminated, earthen material.
- f. If the closure sample collected indicates concentration is higher that the values listed in *Table I*, Enduring will report the elevated sample values to the NMOCD, and additional delineation may be required at that time.

Table I Closure Criteria for Recycling Containments			
Depth below bottom of containment to groundwater less than 10,000 mg/l TDS	Constituent	Method*	Limit**
51 feet - 100 feet	Chloride	EPA 300.0	10,000 mg/kg
	TPH (GRO+DRO+MRO)	EPA SW-846 Method 8015M	2,500 mg/kg
	GRO+DRO	EPA SW-846 Method 8015M	1,000 mg/kg
	BTEX	EPA SW-846 Method 8021B or 8260B	50 mg/kg
	Benzene	EPA SW-846 Method 8021B or 8260B	10 mg/kg
> 100 feet	Chloride	EPA 300.0	20,000 mg/kg
	TPH (GRO+DRO+MRO)	EPA SW-846 Method 8015M	2,500 mg/kg
	GRO+DRO	EPA SW-846 Method 8015M	1,000 mg/kg
	BTEX	EPA SW-846 Method 8021B or 8260B	50 mg/kg
	Benzene	EPA SW-846 Method 8021B or 8260B	10 mg/kg

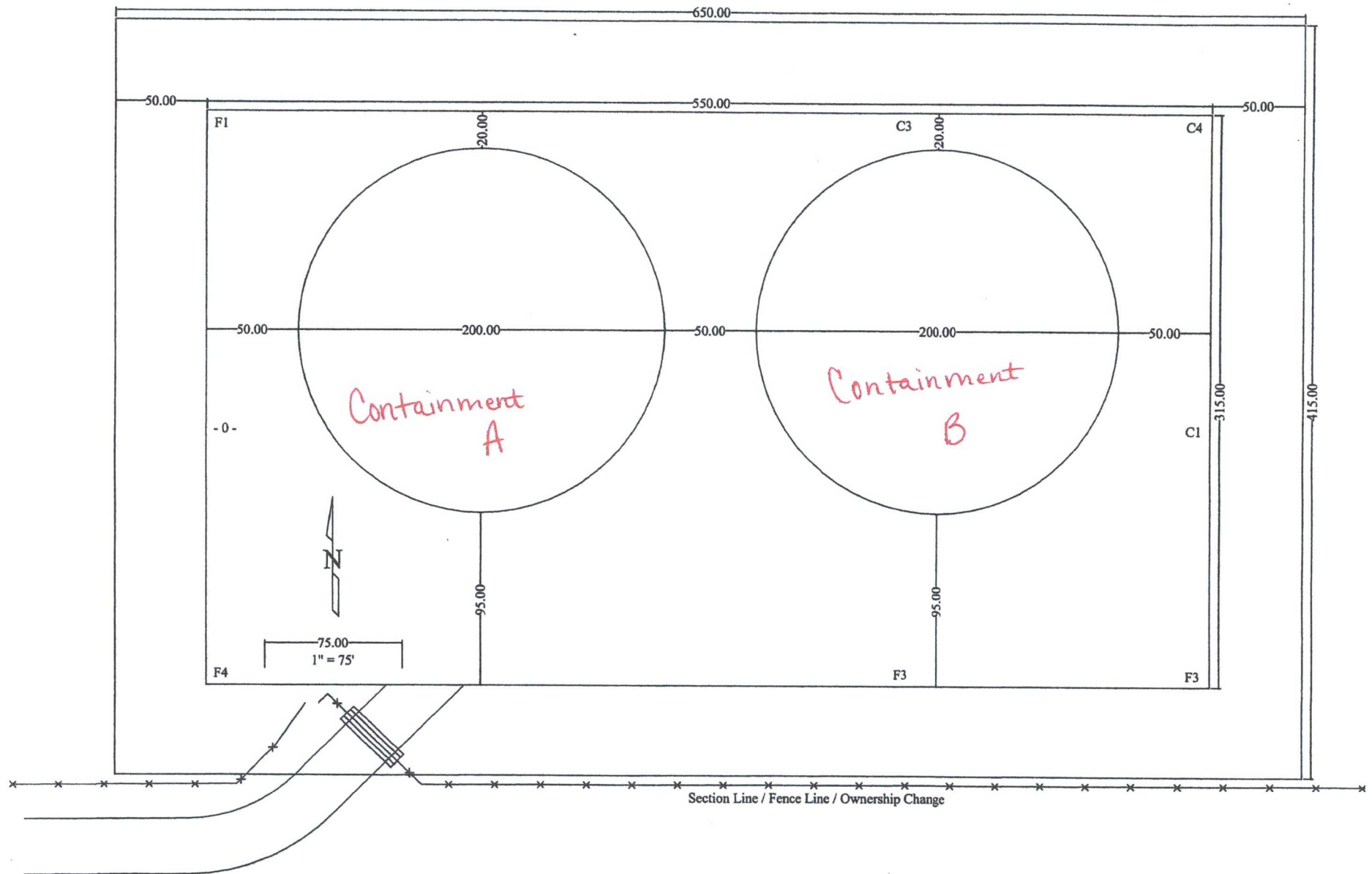
* Or other test methods approved by the division.

** Numerical limits or natural background level, whichever is greater.

[19.15.34.14 NMAC - N, 3/31/15]

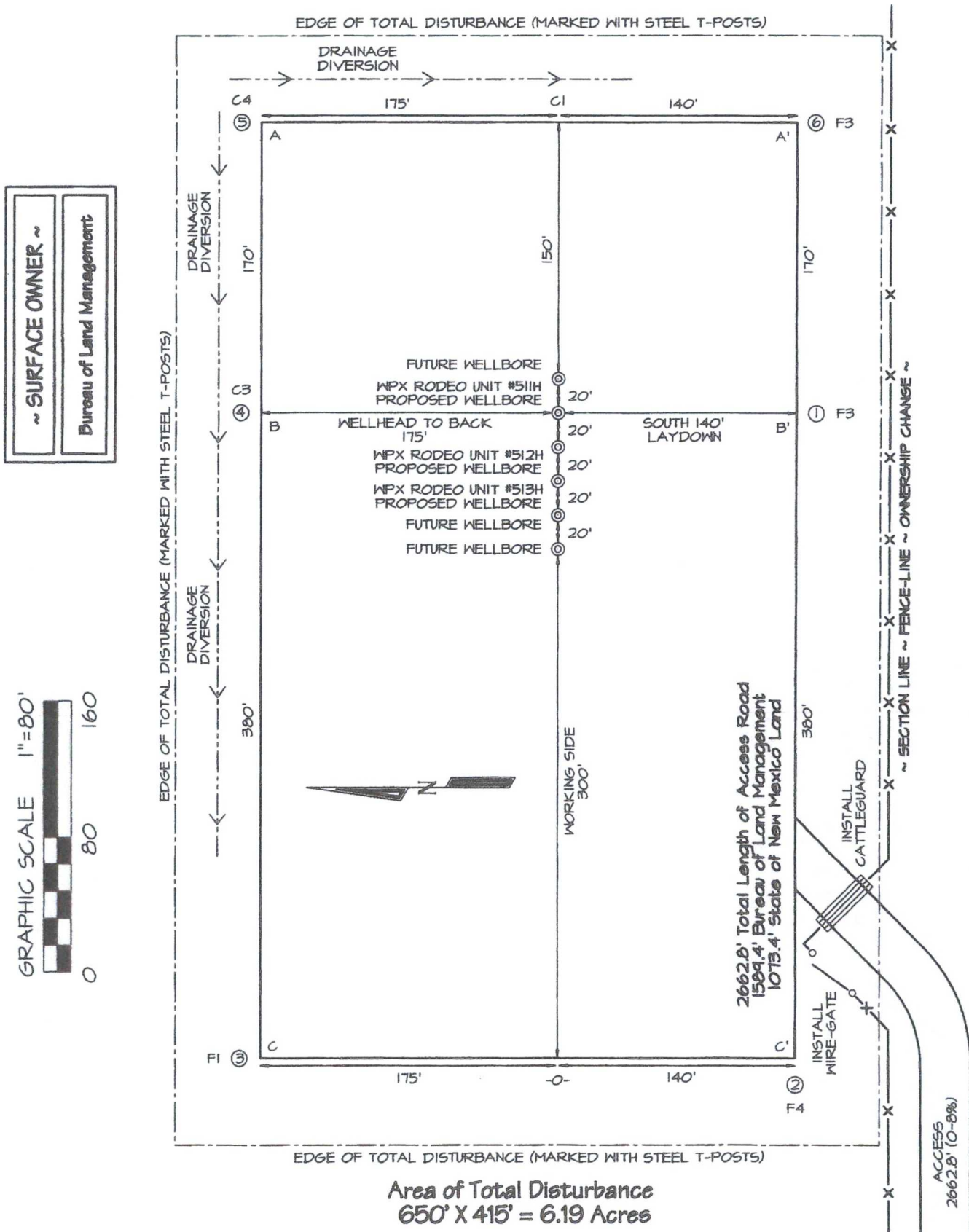
- Enduring will reclaim the containments location to a safe and stable condition that blends the surrounding undisturbed area. Tops soils and subsoils will be replaced to their original relative positions and contoured to achieve erosion control, long term stability and preservation of surface water flow patterns. The disturbed are will then be reseeded in the first favorable growing season following closure. The impacted surface area will be restored to the condition that existed prior to construction.
- Reclamation of all disturbed areas no longer in use shall be considered complete when all ground disturbing activities have been completed, and a uniform vegetative cover has been established that reflects a life-form ratio of plus or minus fifty percent of pre-disturbance levels and total percent plant cover of at least seventy percent of pre-disturbance levels excluding noxious weeds.
- Soil cover and revegetation as required in 19.15.34.14 NMAC will be met in addition to the reclamation requirements by BLM as surface owner which provide for more stringent requirements.

Attachment A



Attachment B

WPX ENERGY PRODUCTION, LLC RODEO UNIT #511H
191' FSL & 1365' FWL, SECTION 25, T23N, R9W, NMPM
SAN JUAN COUNTY, NEW MEXICO ELEVATION: 6798'
LAT: 36°11'28.1940" LONG: 107°44'39.0719" DATUM: NAD1927



Steel T-Posts have been set to define Edge of Disturbance limits which are 50' offset from edge of wellpad.

Directions from the Intersection of US Hwy 550 & US Hwy 64

in Bloomfield, NM to WPX Energy Production, LLC Rodeo Unit #511H

191' FSL & 1365' FWL, Section 25, T23N, R9W, N.M.P.M., San Juan County, NM

Latitude: 36.191179°N Longitude: 107.744800°W Datum: NAD1983

From the intersection of US Hwy 550 & US Hwy 64 in Bloomfield, NM, travel Southerly on US Hwy 550 for 37.8 miles to Mile Marker 113.4;

Go Right (South-westerly) on County Road #7890 for 0.8 miles to fork in roadway;

Go Left (Southerly) remaining on County Road #7890 for 1.3 miles to four-way intersection;

Go Left (South-easterly) remaining on County Road #7890 for 0.6 miles to fork in roadway;

Go Right (South-westerly) remaining on County Road #7890 for 1.5 miles to begin proposed access on left-hand side which continues for 2662.8' to staked WPX Rodeo Unit #511H location.

Attachment C

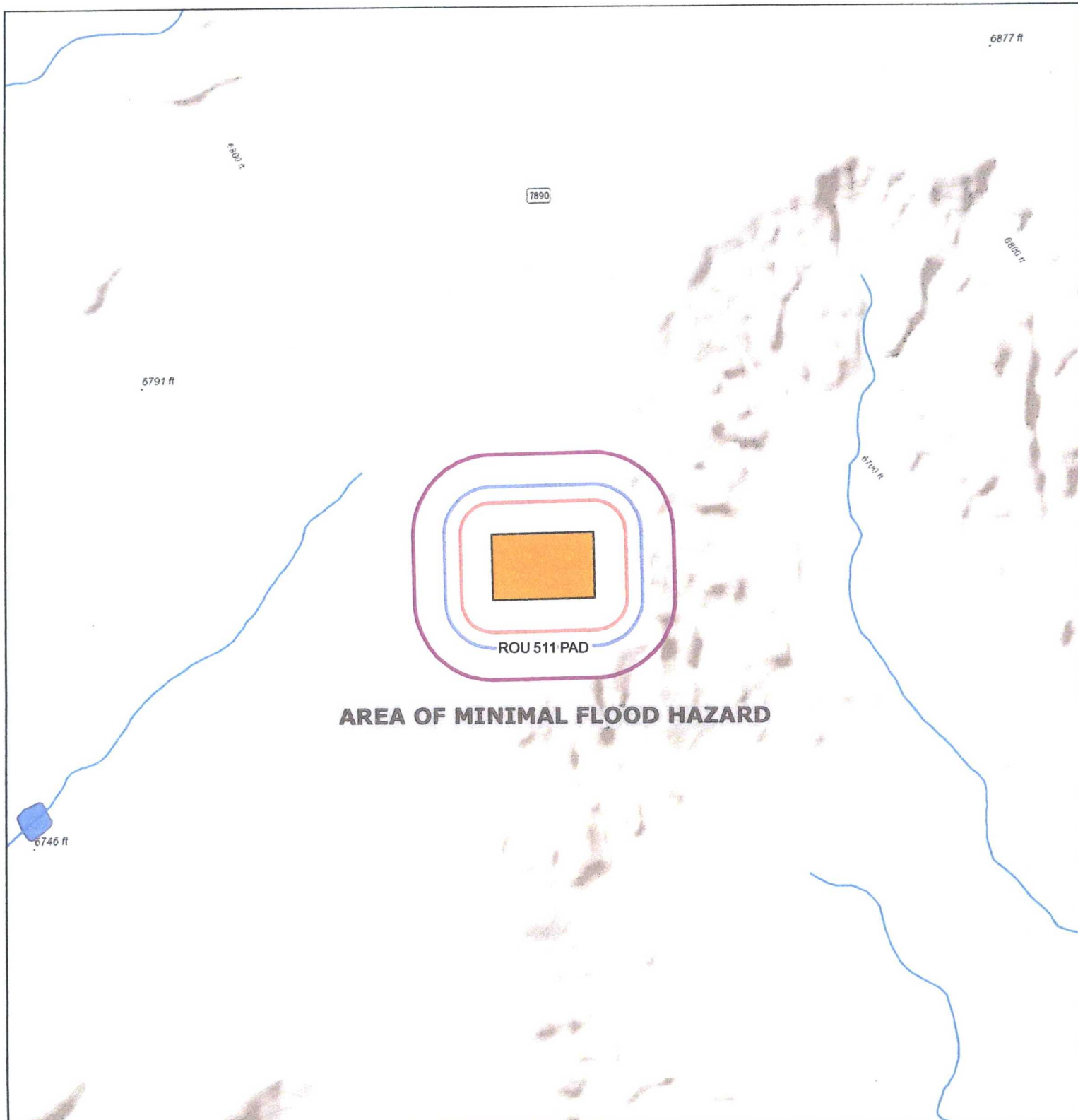
MO-TE DRILLING, INC.

DAY		
DRILLER	JOSH WOOD	LEFT TOWN ARRIVED FIELD
HELPER	Brando H	LEFT FIELD ARRIVED TOWN
HELPER	Casly M	TOTAL FOOTAGE TODAY
RIG NO.	207	DATE 1-16-18 CLIENT Enduring
BEGIN WORK ON HOLE NO.	Rodeo Unit #511H TH	AT FEET
BEGIN WORK ON HOLE NO.		AT FEET

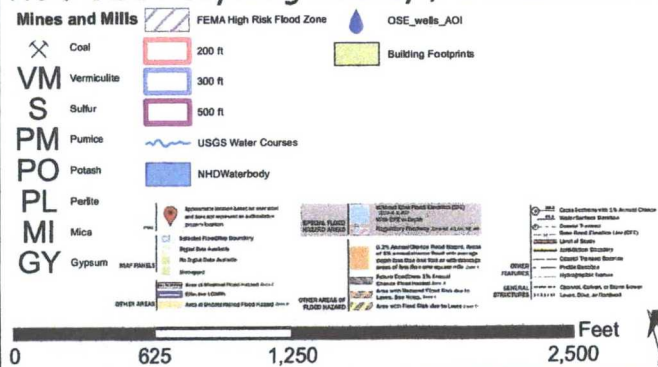
TIME		ACTIVITY
FROM	TO	
7:30	9:00	Drive To location
9:00	9:45	Set up, Rig up, Wait on site
9:45	9:55	Drill 0-50' Trip out wait 1 hour
9:55	10:55	Standby Test for water, No water
10:55	11:15	Drill 50-100' Trip out wait 1 hour
11:15	12:15	Standby Test for water, No water
12:15	12:45	Fill in hole Rig down
12:45	2:00	Drive in.
		6 1/4 Bit
		Section 25, T23N, R9W San Juan County
		LAT: 36.191179 LONG: 107.744800

BIT RECORD		
SIZE & MAKE	SERIAL NO.	FOOTAGE
CIRCULATION MATERIAL		
QUAN.	UNIT	MATERIAL

NO. OF LOADS OF WATER _____ SOURCE _____



ROU 511 Recycling Facility / Containment location



**ENDURING
RESOURCES, LLC**

Data Source Statement:
BLM-FFO, Enduring Resources GIS, ESRI Inc.,
NCE Surveys, USGS

NAD 1983 2011 StatePlane New Mexico West FIPS 3003 Ft US

Author: drogers

Date: 1/21/2019



ROU 511 / Recycling Containment



**ENDURING
RESOURCES, LLC**

Data Source Statement:
BLM-FFO, Enduring Resources GIS, ESRI Inc.,
NCE Surveys, USGS

0 187.5 375 750 Feet



NAD 1983 2011 StatePlane New Mexico West FIPS 3003 Ft US

Author: drogers

Date: 1/21/2019

LakeTank™

B-40

Overview:

Contain more than 5 acre feet (1.7 million gallons) of water with just one tank. The LakeTank™ B-40 reduces traffic and carbon footprint on your jobsite, by replacing 80 traditional 500 BBL frac tanks and minimizes manifolding time.

Features:

- Specially designed panel handling system for safe, rapid deployment
- Two OSHA compliant access/egress ladders
- One stairway observation platform
- Four 4" fill lines, Three 4" circulation lines
- One 12" low suction line for high volume pumping applications
- Heavy duty connecting plates and pins for safe reliable containment
- Six temporary panel supports to ensure safety during installation
- No easy access to the liner from outside the tank
- Standard liner is 40mil LLDPE
- Standard underlayment is 100Z Geotextile Ground Pad
- Reduced transportation costs: Complete tank structure is delivered on three trucks (6 truck trips vs. 98 for conventional 500bbl frac tanks)
- Reduced labor costs during manifolding and operation
- Reduced heating costs
- Reduced site preparation costs (smaller footprint compared to 500bbl frac tanks)

Specs:

Structure Diameter	160 ft.
Working Clearance	220 ft.
Capacity with 8" free board	40,280 BBL
Number of Panels	18
Number of Trucks to transport	3
Size of each Panel	12x28 ft.
Panel Weight (w/o insulation)	6,550 lb.
Liner Diameter	204 ft. Diameter
Liner Weight = 0.19 lb./sq. ft.	5,150 lb.



Accessories:

- FreezeSentry™ Heating equipment
- Tank Sidewall Insulation
- Floating Insulated Covers
- Bird Netting
- Filtration Equipment
- Temperature and Level Indicators/Alarms/Telemetry
- Various Liner Materials & Thicknesses
- Additional Suction or Fill Lines



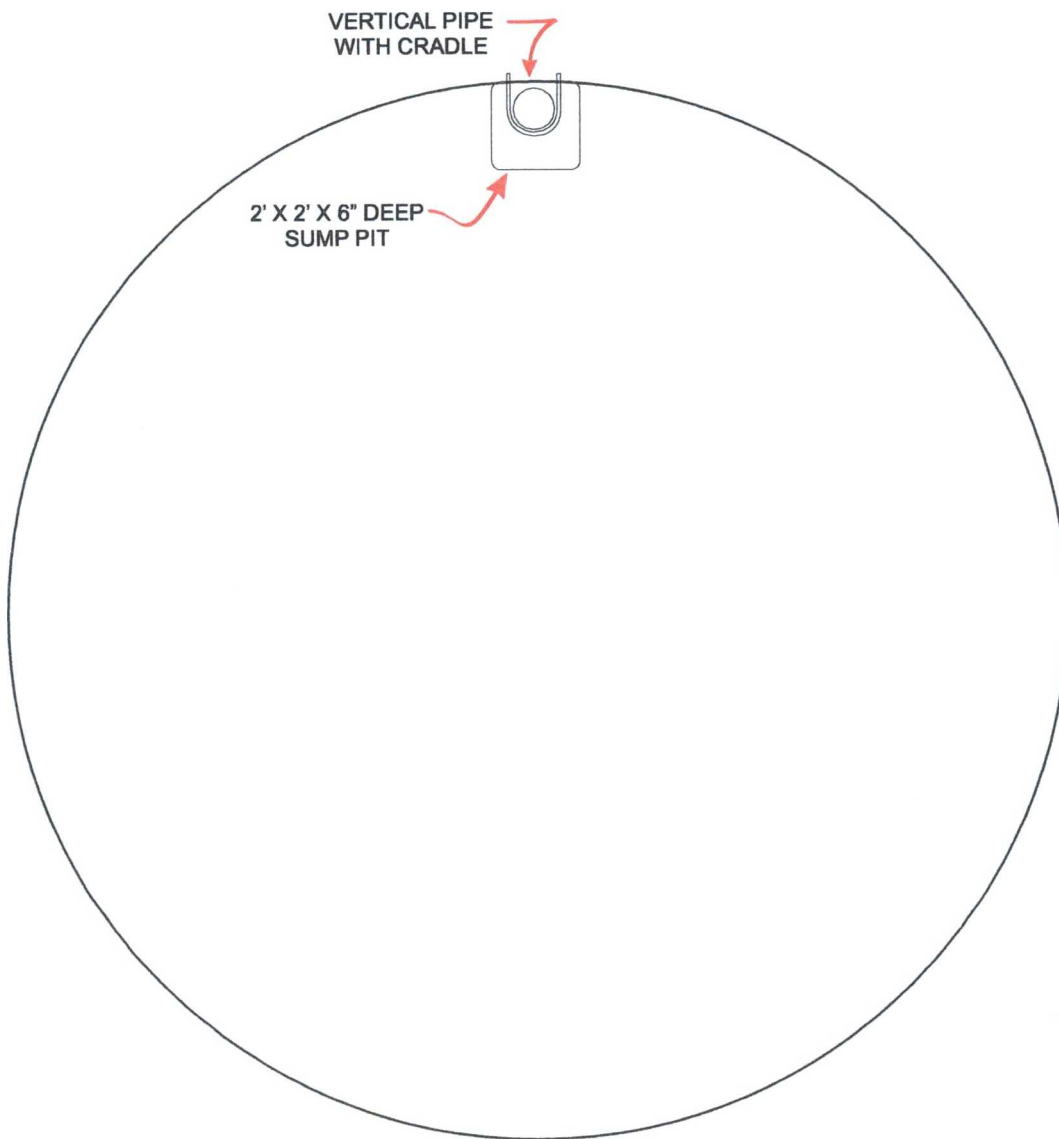
PUMPS • TANKS • FILTRATION • PIPE • SPILLGUARDS

Rain for Rent is a registered trademark of Western Oilfields Supply Company. Features and specifications are subject to change without notice.

Liquid Ingenuity.
800-742-7246
rainforrent.com

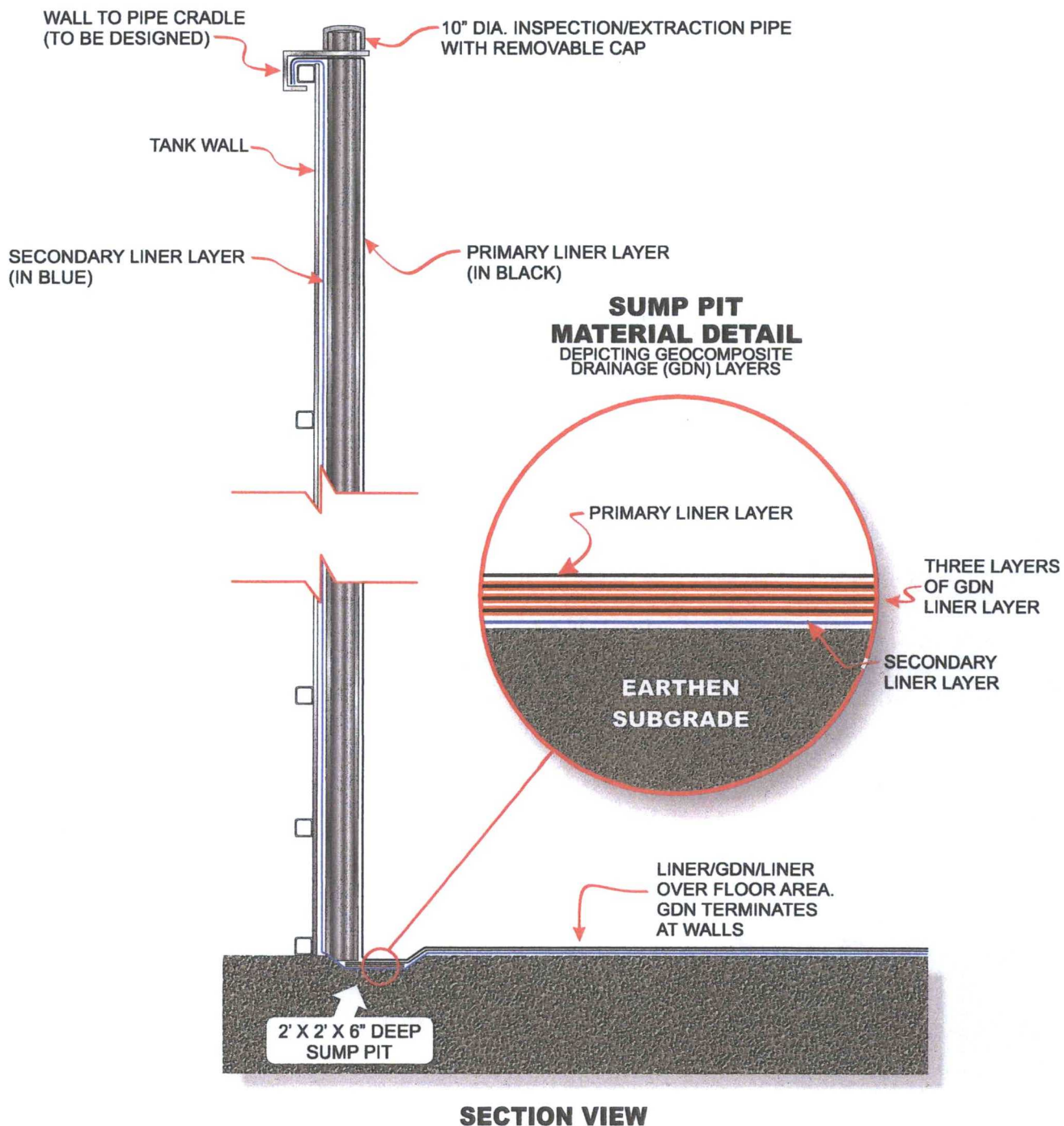


**CONCEPTUAL DETAILS FOR DOUBLE LINED TANK
SYSTEM WITH LEAK DETECTION/LIQUID REMOVAL
PROVISIONS**
(SHEET 1 OF 2 NO SCALE)



PLAN VIEW

CONCEPTUAL DETAILS FOR DOUBLE LINED TANK SYSTEM WITH LEAK DETECTION/LIQUID REMOVAL PROVISIONS (SHEET 1 OF 2 NO SCALE)



Enduring Resources, LLC's Recycling Containment Migratory Bird Mitigation Plan

Enduring Resources, LLC (Enduring) is proposing this Migratory Bird Mitigation Plan (Mitigation Plan) in compliance with the New Mexico Oil Conservation Division (NMOCD) Rule 19.15.34.12.E. Enduring shall ensure that the recycling containment is protective of wildlife by implementing the following proposed Mitigation Plan. Enduring employees will inspect the containment weekly for and, within 30 days of discovery, report the discovery of dead migratory birds or other wildlife to the appropriate wildlife agency and to the division district office in order to facilitate assessment and implementation of measures to prevent incidents from reoccurring. This Mitigation Plan will utilize a combination of visual and audio deterrents to discourage wildlife, particularly birds and bats, from the recycling containment in order to mitigate potential impacts. This Mitigation Plan would be implemented while the Recycling Containment is active and in use, as to not desensitize birds to the deterrents.

The following mitigations will be implemented to reduce any wildlife impacts that may occur from the Recycling Containment:

- The following visual bird deterrents will be installed (Appendix A):
 - Bird-X Prowler Owl decoys will be installed at all four corners of the Containment.
 - Scare-Eye Balloons will be installed along the perimeter of the Containment.
- A Bird-X BroadBand PRO System will be installed at the Containment facility. It utilizes sonic (naturally-recorded bird distress calls & predator cries) to deter birds; as well as, ultrasonic high-frequency sound waves to deter bats. Bird propane cannons were avoided, so as not to disturb other wildlife species.
- The containment will be inspected on a weekly basis when water is present in the containment. All inspectors will insure the containment is receiving only filtered produced water with no hydrocarbons, as well as being trained to inspect the premises for, and respond to any wildlife incident, should it occur.
- Inspection will include:
 - An inspection of the filtration system and all visual and audio deterrents to insure they are in working order and functioning properly.
 - A thorough search of the entire containment facility, and just beyond, for the presence of any wildlife (entrapped, injured, dead, etc.).
- In the event a wildlife incident should occur, James McDaniel with Enduring will be contacted immediately and he will notify the appropriate wildlife agency and division district office. Enduring, appropriate wildlife agency, and division district office will then work collaboratively to address the incident appropriately to insure the incident does not reoccur.

Appendix A: Visual and Audio Deterrents



Call Us 888.683.1834

Home About News Blog International GSA Retail Products Contact

Bird Products Animal/Rodent Products Insect Products Interactive Problem Solver Knowledge Center FREE Evaluation

All Bird-X Products

Electronic Bird Control >

- Sonic Bird Control
- Ultrasonic Bird Control
- Other Electronic Bird Deterrents
- Solar Panel Products

Bird Spikes

- Bird Spikes Kits
- Stainless Steel Spikes
- Plastic Spikes

Bird Netting

Drones

Laser Bird Control

Shock Track Systems

Bird Balls

Bird Wire

Visual Scares and Predator Decoys

Bird Gels, Taste Aversions, & OvaControl® P

For Songbird Lovers

Remote Control Drone

Retail Products

Accessories

BroadBand PRO

- ✓ Combines SONIC and ULTRASONIC Bird Control Technology
- ✓ Creates Uninviting Environment For Birds
- ✓ Covers Up To SIX ACRES

IN STOCK - AVAILABLE IMMEDIATELY!

Deter Birds With Multi-Faceted Sonic and Ultrasonic Attack! The BroadBand PRO's 4-speaker system simultaneously emits sounds that are both audible and inaudible to humans that confuse, disorient, and intimidate pest birds, keeping them away.

Starting at \$850.00 NOW \$725.00 (15% SAVINGS!)

Voltage Options BroadBand PRO 110v (\$725)

Quantity 1

Price \$725.00

Product Total \$725.00

ADD TO CART >

Reviews Details Applications Benefits Add & Combine Specs Case Studies

Guarantee • Warranty

Backed by our 30 Day Electronics Performance Satisfaction Guarantee AND our 6-Month Manufacturer's Warranty Against Material Defects

- Option to add 3 Visual Scares to package for added efficacy
- Emits a combination of audible noises & high-frequency sound waves that are silent-to-most-humans
 - SONIC: Uses naturally-recorded bird distress calls & predator cries: covers up to 6 acres
 - ULTRASONIC: Uses high-frequency sound waves: covers up to 3,600 sq. ft.
- 4 speakers included – 4 independent speakers with 100 ft. of wire each
- Fully programmable – control volume, sound delays, & daylight / night operation
- Weather resistant – NEMA type box is designed to withstand outdoor use
- Option to add an assortment of three (3) high-quality [visual scare products](#)



Pest control for today's environment.

Search
Call Us 888.683.1834

Home About Blog International QA Retail Products Contact

Bird Products

Animal/Rodent Products

Insect Products

Interactive Problem Solver

Knowledge Center

FREE Evaluation



All Bird-X Products

Electronic Bird Control

Sonic Bird Control

Ultrasonic Bird Control

Other Electronic Bird

Deterrents

Solar Panel Products

Bird Spikes

Bird Spikes Kits

Stainless Steel Spikes

Plastic Spikes

Bird Netting

Drones

Laser Bird Control

Shock Track Systems

Bird Bait

Bird Wire

Visual Scare and Predator
Decoys >

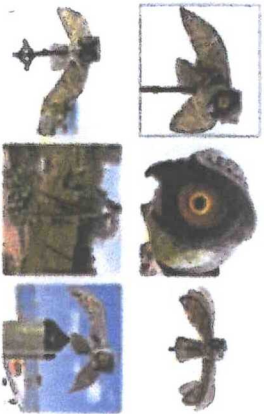
Bird Gels, Taste Aversions,
& OvoControl® P

For Songbird Lovers

Remote Control Drone

Retail Products

Accessories



Quality Guarantee

Guaranteed to be manufactured to specifications &
free from defect at the time of purchase.

Reviews

Details

Applications

Benefits

Add & Combine

Specs

- Predator owl replica, life-size owl
- Owl scare repels pest birds & other small animals
- Always-moving "hunting" posture keeps birds away
- 4-foot wingspan & accurate markings
- Safe, humane, non-toxic, silent
- Covers up to 8,000 sq. ft.

Prowler Owl

- ✓ Proven Visual Scare
- ✓ Saves Money on Cleanup & Repair
- ✓ Eliminates Bird & Small Pest Problems
- ✓ Money-Back Guarantee

Decades-proven visual deterrent, improved with dynamic realism & movement! Scare away birds & small pests with this predator replica of the most-feared aerial predator, the Great Horned Owl, which catches & eats nearly everything it can catch.

- Lifelike, wind-catching design increases effectiveness
- Accurate plumage & hunting flight pose
- Intimidating, glassy eyes "follow" pests
- Flexible wings move & flap in the wind realistically

Without movement, an owl scare is useless - don't be fooled by imitations that are immobile! Install Prowler Owl decoy in any open outdoor area where pest birds or small critters are a problem.

Quantity 1

Price \$39.25

Product Total \$39.25

ADD TO CART >



Pest control for today's environment.

Search

Call Us 888.683.1834

Home About News Blog International GSA Retail Products Contact

Bird Products

Animal/Rodent Products

Insect Products

Interactive Problem Solver

Knowledge Center

FREE Evaluation



All Bird-X Products

Electronic Bird Control

- Sonic Bird Control
- Ultrasonic Bird Control
- Other Electronic Bird Deterrents
- Solar Panel Products

Bird Spikes

- Bird Spikes Kits
- Stainless Steel Spikes
- Plastic Spikes

Bird Netting

Drones

Laser Bird Control

Shock Track Systems

Bird Balls

Bird Wire

Visual Scares and Predator Decoys >

Bird Gels, Taste Aversions, & OvoControl® P

For Songbird Lovers

Remote Control Drone



Scare-Eye Balloons

- ✓ Simple, Highly Effective Bird Repellent
- ✓ Reduce Time & Energy Spent on Cleanup
- ✓ Reflective Mylar Eyes and Tails Included

(3-Pack)

Keep birds away with these simple vinyl ball visual deterrents that move with the wind & intimidate pest birds within visible range.

- Includes three balloons – one white, one yellow, one black
- Easy to use, cost-effective solution – hang the balloons anywhere
- Balloons move in the wind for fear of movement

Scare Eye® balloons are useful in many applications – homes, gardens, barns, trees, garages, marinas, doorways, & many more

Quantity 1

Price \$ 32.55

Product Total \$ 32.55

ADD TO CART >



Guaranteed to be manufactured to specifications and free from defect at the time of purchase.

Reviews Details Applications Benefits Add & Combine Specs

- Predator decoy, 3D balloons
- Three balloons included: one (1) white, one (1) black, and one (1) yellow
- Includes mylar eyes, mylar tails, and strings for each balloon
- Weatherproof, vinyl, inflatable balloon
- Design exaggerates the glaring stare and gaping mouth of natural predators
- Wind causes the Scare-Eye Balloons to move in the wind, increasing efficacy
- Easy installation