



**NEW MEXICO ENERGY, MINERALS
& NATURAL RESOURCES DEPARTMENT**

**OIL CONSERVATION DIVISION
2040 South Pacheco Street
Santa Fe, New Mexico 87505
(505) 827-7131**

September 16, 1997

**Texaco Exploration & Production Inc.
P. O. Box 3109
Midland, Texas 79702
Attention: C. Wade Howard**

Administrative Order DD-199(NSBHL)(SD)

Dear Mr. Howard:

Reference is made to your application dated April 16, 1997 for authorization to directional drill the C. H. Weir "A" Well No. 20 (API No. 30-025-34096), Lea County, New Mexico to a pre-determined subsurface unorthodox oil well location within a standard 40-acre oil spacing and proration unit for any formations and/or pools developed on 40-acre spacing from the top of the Drinkard formation to the base of the Ellenburger formation, which presently includes but is not necessarily limited to the Skaggs-Drinkard and Undesignated Warren-McKee Pools.

The Division Director Finds That:

- (1) The application has been duly filed under the provisions of:
 - (a) **Rule 111.D and E** of the General Rules and Regulations of the New Mexico Oil Conservation Division ("Division"), revised by Division Order No. R-10388, issued by the Oil Conservation Commission in Case 11274 on June 13, 1995; and,
 - (b) **Rule 104.F** of said Division general rules;
- (2) It is the Division's understanding that Texaco Exploration and Production Inc. ("Texaco") intends to place its C. H. Weir "A" Well No. 20 (API No. 30-025-34096) at a surface location 2510 feet from the North line and 2225 feet from the West line (Unit F) of Section 12, Township 20 South, Range 37 East, NMPM, Lea County, New Mexico, drill vertically to an approximate depth of 4,250 feet, kick-off in an east-southeasterly direction, drill directionally in such a manner as to allow the wellbore to penetrate that interval from the top of the Skaggs-Drinkard Pool to the base of the Ellenburger formation at a targeted unorthodox subsurface oil well location that is approximately 2630 feet from the North line and 2575 feet from the West line (Unit F) of said Section 12;
- (3) Within the SE/4 NW/4 (Unit F) of said Section 12, all intervals from the top of the Drinkard formation to the base of the Ellenburger formation, which includes the Skaggs-Drinkard and Undesignated Warren-McKee Pools, are all currently subject to the statewide

rules and regulations, as promulgated by **Rule 104.C(1)(a)**, which provides for 40-acre oil spacing and proration units, or drilling units, and requires that wells be located no closer than 330 feet to the outer boundary of a single 40-acre oil spacing and proration unit;

- (4) According to the application, the C. H. Weir "A" fee lease comprises an area that includes the S/2 N/2 and N/2 S/2 of said Section 12 and is operated by Texaco; therefore, there are no affected offsets to the subject 40-acre tract other than Texaco;
- (5) Within the 160 acres that comprises the SW/4 NE/4, SE/4 NW/4, NE/4 SW/4, and NW/4 SE/4 of said Section 12, Texaco is currently developing the Skaggs-Drinkard Pool in the following manner:

- (a) the SW/4 NE/4 (Unit G) of said Section 12, being a standard 40-acre oil spacing and proration unit, is dedicated to Texaco's C. H. Weir "A" Well No. 12 (API No. 30-025-27398), located at a standard oil well location 2307 feet from the North and East lines of said Section 12;

- (b) the SE/4 NW/4 (Unit F) of said Section 12, being a standard 40-acre oil spacing and proration unit, is dedicated to Texaco's C. H. Weir "A" Well No. 19 (API No. 30-025-29686), located at a standard oil well location 1980 feet from the North line and 1651 feet from the West line of said Section 12;

- (c) the NW/4 SE/4 (Unit J) of said Section 12, being a standard 40-acre oil spacing and proration unit, is simultaneously dedicated to Texaco's:

- (i) C. H. Weir "A" Well No. 10 (API No. 30-025-20964), located at a standard oil well location 1980 feet from the South line and 2306 feet from the East line of said Section 12; and,

- (ii) C. H. Weir "A" Well No. 16 (API No. 30-025-29207), located at a standard oil well location 2310 feet from the South line and 1650 feet from the East line of said Section 12; and,

- (d) the NE/4 SW/4 (Unit K) of said Section 12, being

a standard 40-acre oil spacing and proration unit, is dedicated to Texaco's C. H. Weir "A" Well No. 17 (API No. 30-025-29320), located at a standard oil well location 1720 feet from the South line and 2103 feet from the West line of said Section 12;

- (6) The proposed subsurface "infill" Skaggs-Drinkard oil well location in Unit "F" of said Section 12 (2603 feet from the North line and 2225 feet from the West line), being somewhat of equidistance to all five of the above-described producing Drinkard oil wells, will enable Texaco to further develop and deplete the reserves within the aforementioned 160-acre area within its C. H. Weir "A" fee lease;
- (7) According to Texaco's geological data submitted with this application:
 - (i) a small localized anticlinal structure exists within the McKee formation in portions of the SW/4 NE/4, the SE/4 NW/4, and the NE/4 SW/4 of said Section 12; and,
 - (ii) a well drilled at the proposed subsurface unorthodox oil well location [2630 feet from the North line and 2575 feet from the West line (Unit F) of said Section 12] should intersect this structure at a point of maximum thickness within the potentially productive area, thereby increasing the likelihood of obtaining commercial oil production;
- (8) Texaco intends to test the other intervals for possible oil production with the same wellbore thereby enabling maximum utilization of the subject wellbore;
- (9) The "project area" for any and all formations and/or pools developed on 40-acre spacing from the top of the Drinkard formation to the base of the Ellenburger formation, which includes the Skaggs-Drinkard and Undesignated Warren-McKee Pools, is to consist of a single standard 40-acre oil spacing and proration unit comprising the SE/4 NW/4 (Unit F) of said Section 12 and the applicable drilling window or "producing area" for said wellbore should include that area within the SE/4 NW/4 (Unit F) of said Section 12 that:
 - (i) is no closer than 330 feet to the north and west lines of said quarter-quarter section lines;
 - (ii) nor closer than 65 to the east line;
 - (iii) nor closer than 10 feet to the south line; and,
- (10) It appearing the applicant has satisfied all of the appropriate requirements prescribed in said Rule 111.D and E and 104.F(2), the subject application should be approved and the well should be governed by the provisions contained within this order and all other applicable provisions of Division General Rule 111.

IT IS THEREFORE ORDERED THAT:

(1) Texaco Exploration and Production, Inc. ("Texaco") is hereby authorized to drill its proposed C. H. Weir "A" Well No. 20 (API No. 30-025-34096) at a surface location 2510 feet from the North line and 2225 feet from the West line (Unit F) of Section 12, Township 20 South, Range 37 East, NMPM, Lea County, New Mexico, drill vertically to an approximate depth of 4,250 feet, kick-off in an east-southeasterly direction, drill directionally in such a manner as to allow the wellbore to penetrate that interval from the top of the Skaggs-Drinkard Pool to the base of the Ellenburger formation at a targeted unorthodox subsurface oil well location that is approximately 2630 feet from the North line and 2575 feet from the West line (Unit F) of said Section 12.

PROVIDED HOWEVER THAT prior to commencing directional drilling operations in said wellbore, the applicant shall establish the location of the kick-off point by means of a directional survey acceptable to the Division.

PROVIDED FURTHER THAT during or upon completion of said directional drilling operations, the applicant shall conduct an accurate wellbore survey from the kick-off point to total depth in order that the subsurface bottomhole location, as well as the wellbore's true depth and course, may be determined.

(2) The applicant shall notify the supervisor of the Hobbs District office of the Division of the date and time said wellbore surveys are to be conducted so that they may be witnessed. The applicant shall further provide a copy of said wellbore surveys to the Santa Fe and Hobbs offices of the Division upon completion.

(3) For the Skaggs-Drinkard Pool the existing standard 40-acre oil spacing and proration unit comprising the SE/4 NW/4 (Unit F) of said Section 12, which is presently dedicated to Texaco's C. H. Weir "A" Well No. 19 (API No. 30-025-29686), located at a standard oil well location 1980 feet from the North line and 1651 feet from the West line of said Section 12, and said C. H. Weir "A" Well No. 20 are both to be dedicated to said well.

(4) Further, Texaco is hereby: (i) authorized to simultaneously dedicate Skaggs-Drinkard oil production from the existing C. H. Weir "A" Well No. 19 with the proposed C. H. Weir "A" Well No. 20; and, (ii) permitted to produce the allowable assigned the subject standard 40-acre oil spacing and proration unit from both wells in any proportion.

(5) For all other formations and/or pools developed on 40-acre spacing from the top of the Drinkard formation to the base of the Ellenburger formation, which includes the Undesignated Warren-McKee Pool, the "project area" is to consist of a single standard 40-acre oil spacing and proration unit comprising the SE/4 NW/4 (Unit F) of said Section 12 and the applicable drilling window or "producing area" for said wellbore should include that area within the SE/4 NW/4 (Unit F) of said Section 12.

(6) The applicable drilling window or "producing area" for said wellbore should include that area within the SE/4 NW/4 (Unit F) of said Section 12 that: (i) is no closer than 330 feet to the north and west lines of said quarter-quarter section lines; (ii) nor closer than 65 to the east line; (iii) nor closer than

10 feet to the south line.


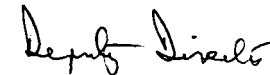
(7) The operator shall comply with all requirements and conditions set forth in Division General Rule 111.E(2) and any applicable requirements in 111.D and F.

(8) Form C-105 shall be filed in accordance with Division Rule 1105 and the operator shall indicate thereon true vertical depth (TVD) in addition to measured vertical depth (MVD).

(9) Jurisdiction of this cause is retained for the entry of such further orders as the Division may deem necessary.

DONE at Santa Fe, New Mexico, on the day and year hereinabove designated.

STATE OF NEW MEXICO
OIL CONSERVATION DIVISION

 
WILLIAM J. LEMAY
Director

SEAL

cc: Oil Conservation Division - Hobbs
Texaco Exploration & Production Inc. - Denver, Colorado

NSBHL.TEX

Rec: 4/25/97
Sup: 5/15/97
Released: 9-16-97

September 16, 1997

Texaco Exploration & Production Inc.
P. O. Box 3109
Midland, Texas 79702

Attention: C. Wade Howard

199
*Administrative Order DD-*** (NSBHL) (SD)*

Dear Mr. Howard:

Reference is made to your application dated April 16, 1997 for authorization to directional drill the C. H. Weir "A" Well No. 20 (API No. 30-025-34096), Lea County, New Mexico to a pre-determined subsurface unorthodox oil well location within a standard 40-acre oil spacing and proration unit for any formations and/or pools developed on 40-acre spacing from the top of the Drinkard formation to the base of the Ellenburger formation, which presently includes but is not necessarily limited to the Skaggs-Drinkard and Undesignated Warren-McKee Pools.

The Division Director Finds That:

- (1) The application has been duly filed under the provisions of:
 - (a) **Rule 111.D** and **E** of the General Rules and Regulations of the New Mexico Oil Conservation Division ("Division"), revised by Division Order No. R-10388, issued by the Oil Conservation Commission in Case 11/274 on June 13, 1995; and,
 - (b) **Rule 104.F** of said Division general rules;
- (2) It is the Division's understanding that Texaco Exploration and Production Inc. ("Texaco") intends to place its C. H. Weir "A" Well No. 20 (API No. 30-025-34096) at a surface location 2510 feet from the North line and 2225 feet from the West line (Unit F) of Section 12, Township 20 South, Range 37 East, NMPM,

Lea County, New Mexico, drill vertically to an approximate depth of 4,250 feet, kick-off in an east-southeasterly direction, drill directionally in such a manner as to allow the wellbore to penetrate that interval from the top of the Skaggs-Drinkard Pool to the base of the Ellenburger formation at a targeted unorthodox subsurface oil well location that is approximately 2630 feet from the North line and 2575 feet from the West line (Unit F) of said Section 12;

- (3) Within the SE/4 NW/4 (Unit F) of said Section 12, all intervals from the top of the Drinkard formation to the base of the Ellenburger formation, which includes the Skaggs-Drinkard and Undesignated Warren-McKee Pools, are all currently subject to the statewide rules and regulations, as promulgated by **Rule 104.C(1)(a)**, which provides for 40-acre oil spacing and proration units, or drilling units, and requires that wells be located no closer than 330 feet to the outer boundary of a single 40-acre oil spacing and proration unit;
- (4) According to the application, the C. H. Weir "A" fee lease comprises an area that includes the S/2 N/2 and N/2 S/2 of said Section 12 and is operated by Texaco; therefore, there are no effected offsets to the subject 40-acre tract other than Texaco;
- (5) Within the 160 acres that comprises the SW/4 NE/4 SE/4 NW/4, NE/4 SW/4, and NW/4 SE/4 of said Section 12, Texaco is currently developing the Skaggs-Drinkard Pool in the following manner:

- (a) the SW/4 NE/4 (Unit G) of said Section 12, being a standard 40-acre oil spacing and proration unit, is dedicated to Texaco's C. H. Weir "A" Well No. 12 (API No. 30-025-27398), located at a standard oil well location 2307 feet from the North and East lines of said Section 12;

- (b) the SE/4 NW/4 (Unit F) of said Section 12, being a standard 40-acre oil spacing and proration unit, is dedicated to Texaco's C. H. Weir "A" Well No. 19 (API No. 30-025-29686), located at a standard oil well location 1980 feet from the North line and 1651 feet from the West line of said Section 12;

- (c) the NW/4 SE/4 (Unit J) of said Section 12, being a standard 40-acre oil spacing and proration unit, is simultaneously dedicated to Texaco's:

- (i) C. H. Weir "A" Well No. 10 (API No. 30-025-20964), located at a standard oil well location 1980 feet

from the South line and 2306 feet
from the East line of said Section 12;
and,

(ii) C. H. Weir "A" Well No. 16
(API No. 30-025-29207), located at
a standard oil well location 2310 feet
from the South line and 1650 feet
from the East line of said Section 12;
and,

(d) the NE/4 SW/4 (Unit K) of said Section 12,
being a standard 40-acre oil spacing and proration
unit, is dedicated to Texaco's C. H. Weir "A" Well
No. 17 (API No. 30-025-29320), located at a
standard oil well location 1720 feet from the South
line and 2103 feet from the West line of said
Section 12;

(6) The proposed subsurface "infill" Skaggs-Drinkard oil well location in Unit "F"
of said Section 12 (2603 feet from the North line and 2225 feet from the West
line), being somewhat of equidistance to all five of the above-described producing
Drinkard oil wells, will enable Texaco to further develop and deplete the reserves
within the aforementioned 160-acre area within its C. H. Weir "A" fee lease;

(7) According to Texaco's geological data submitted with this application:

(i) a small localized anticlinal structure exists
within the McKee formation in portions of the
SW/4 NE/4, the SE/4 NW/4, and the NE/4 SW/4
of said Section 12; and,

(ii) a well drilled at the proposed subsurface
unorthodox oil well location [2630 feet from the
North line and 2575 feet from the West line (Unit
F) of said Section 12] should intersect this structure
at a point of maximum thickness within the
potentially productive area, thereby increasing the
likelihood of obtaining commercial oil production;

(8) Texaco intends to test the other intervals for possible oil production with the same
wellbore thereby enabling maximum utilization of the subject wellbore;

(9) The "project area" for any and all formations and/or pools developed on 40-acre
spacing from the top of the Drinkard formation to the base of the Ellenburger
formation, which includes the Skaggs-Drinkard and Undesignated Warren-McKee

Pools, is to consist of a single standard 40-acre oil spacing and proration unit comprising the SE/4 NW/4 (Unit F) of said Section 12 and the applicable drilling window or "producing area" for said wellbore should include that area within the SE/4 NW/4 (Unit F) of said Section 12 that: (i) is no closer than 330 feet to the north and west lines of said quarter-quarter section lines; (ii) nor closer than 65 to the east line; (iii) nor closer than 10 feet to the south line; and,

- (10) It appearing the applicant has satisfied all of the appropriate requirements prescribed in said **Rule 111.D and E and 104.F(2)**, the subject application should be approved and the well should be governed by the provisions contained within this order and all other applicable provisions of **Division General Rule 111**.

IT IS THEREFORE ORDERED THAT:

(1) Texaco Exploration and Production, Inc. ("Texaco") is hereby authorized to drill its proposed C. H. Weir "A" Well No. 20 (API No. 30-025-34096) at a surface location 2510 feet from the North line and 2225 feet from the West line (Unit F) of Section 12, Township 20 South, Range 37 East, NMPM, Lea County, New Mexico, drill vertically to an approximate depth of 4,250 feet, kick-off in an east-southeasterly direction, drill directionally in such a manner as to allow the wellbore to penetrate that interval from the top of the Skaggs-Drinkard Pool to the base of the Ellenburger formation at a targeted unorthodox subsurface oil well location that is approximately 2630 feet from the North line and 2575 feet from the West line (Unit F) of said Section 12.

PROVIDED HOWEVER THAT prior to commencing directional drilling operations in said wellbore, the applicant shall establish the location of the kick-off point by means of a directional survey acceptable to the Division.

PROVIDED FURTHER THAT during or upon completion of said directional drilling operations, the applicant shall conduct an accurate wellbore survey from the kick-off point to total depth in order that the subsurface bottomhole location, as well as the wellbore's true depth and course, may be determined.

(2) The applicant shall notify the supervisor of the Hobbs District office of the Division of the date and time said wellbore surveys are to be conducted so that they may be witnessed. The applicant shall further provide a copy of said wellbore surveys to the Santa Fe and Hobbs offices of the Division upon completion.

(3) For the Skaggs-Drinkard Pool the existing standard 40-acre oil spacing and proration unit comprising the SE/4 NW/4 (Unit F) of said Section 12, which is presently dedicated to Texaco's C. H. Weir "A" Well No. 19 (API No. 30-025-29686), located at a standard oil well location 1980 feet from the North line and 1651 feet from the West line of said Section 12, and said C. H. Weir "A" Well No. 20 are both to be dedicated to said well.

(4) Further, Texaco is hereby: (i) authorized to simultaneously dedicate Skaggs-Drinkard oil production from the existing C. H. Weir "A" Well No. 19 with the proposed C. H. Weir "A" Well No. 20; and, (ii) permitted to produce the allowable assigned the subject standard 40-acre oil spacing and proration unit from both wells in any proportion.

(5) For all other formations and/or pools developed on 40-acre spacing from the top of the Drinkard formation to the base of the Ellenburger formation, which includes the Undesignated Warren-McKee Pool, the "project area" is to consist of a single standard 40-acre oil spacing and proration unit comprising the SE/4 NW/4 (Unit F) of said Section 12 and the applicable drilling window or "producing area" for said wellbore should include that area within the SE/4 NW/4 (Unit F) of said Section 12.

(6) The applicable drilling window or "producing area" for said wellbore should include that area within the SE/4 NW/4 (Unit F) of said Section 12 that: (i) is no closer than 330 feet to the north and west lines of said quarter-quarter section lines; (ii) nor closer than 65 to the east line; (iii) nor closer than 10 feet to the south line.

(7) The operator shall comply with all requirements and conditions set forth in Division General Rule 111.E(2) and any applicable requirements in 111.D and F.

(8) Form C-105 shall be filed in accordance with Division Rule 1105 and the operator shall indicate thereon true vertical depth (TVD) in addition to measured/depth (MVD).

(9) Jurisdiction of this cause is retained for the entry of such further orders as the Division may deem necessary.

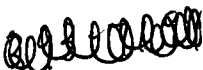
DONE at Santa Fe, New Mexico, on the day and year hereinabove designated.

STATE OF NEW MEXICO
OIL CONSERVATION DIVISION

WILLIAM J. LEMAY
Director

S E A L

cc: Oil Conservation Division - Hobbs
Texaco Exploration & Production Inc. - Denver, Colorado 80201
P. O. Box 2100



NEW MEXICO OIL CONSERVATION DIVISION

- Engineering Bureau -

ADMINISTRATIVE APPLICATION COVERSHEET

THIS COVERSHEET IS MANDATORY FOR ALL ADMINISTRATIVE APPLICATIONS FOR EXCEPTIONS TO DIVISION RULES AND REGULATIONS

Application Acronyms:

[NSP-Non-Standard Proration Unit] [NSL-Non-Standard Location]
 [DD-Directional Drilling] [SD-Simultaneous Dedication]
 [DHC-Downhole Commingling] [CTB-Lease Commingling] [PLC-Pool/Lease Commingling]
 [PC-Pool Commingling] [OLS - Off-Lease Storage] [OLM-Off-Lease Measurement]
 [WFX-Waterflood Expansion] [PMX-Pressure Maintenance Expansion]
 [SWD-Salt Water Disposal] [IPI-Injection Pressure Increase]
 [EOR-Qualified Enhanced Oil Recovery Certification] [PPR-Positive Production Response]

[1] TYPE OF APPLICATION - Check Those Which Apply for [A]

[A] Location - Spacing Unit - Directional Drilling
☒ NSL ☐ NSP ☒ DD ☐ SD

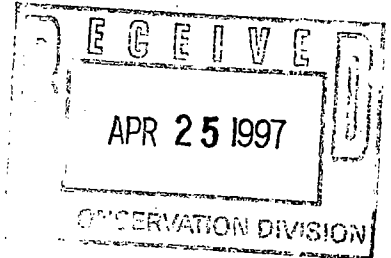
Check One Only for [B] or [C]

[B] Commingling - Storage - Measurement
☐ DHC ☐ CTB ☐ PLC ☐ PC ☐ OLS ☐ OLM

[C] Injection - Disposal - Pressure Increase - Enhanced Oil Recovery
☐ WFX ☐ PMX ☐ SWD ☐ IPI ☐ EOR ☐ PPR

[2] NOTIFICATION REQUIRED TO: - Check Those Which Apply, or ☐ Does Not Apply

[A] ☐ Working, Royalty or Overriding Royalty Interest Owners
 [B] ☒ Offset Operators, Leaseholders or Surface Owner
 [C] ☐ Application is One Which Requires Published Legal Notice
 [D] ☐ Notification and/or Concurrent Approval by BLM or SLO
 U.S. Bureau of Land Management - Commissioner of Public Lands, State Land Office
 [E] ☐ For all of the above, Proof of Notification or Publication is Attached, and/or,
 [F] ☐ Waivers are Attached



top of structure in the Ellenburger

[3] INFORMATION / DATA SUBMITTED IS COMPLETE - Statement of Understanding

I hereby certify that I, or personnel under my supervision, have read and complied with all applicable Rules and Regulations of the Oil Conservation Division. Further, I assert that the attached application for administrative approval is accurate and complete to the best of my knowledge and where applicable, verify that all interest (WI, RI, ORRI) is common. I further verify that all applicable API Numbers are included. I understand that any omission of data, information or notification is cause to have the application package returned with no action taken.

Note: Statement must be completed by an individual with supervisory capacity.

C. WADE HOWARD
 Print or Type Name

C. Wade Howard
 Signature

ENGINEER ASSISTANT
 Title

4/23/97
 Date



Texaco Exploration
and Production Inc

500 North Loraine
Midland TX 79701

P O Box 3109
Midland TX 79702

April 16, 1997

GOV - STATE AND LOCAL GOVERNMENTS

Directional Drilling

Unorthodox Location

C. H. Weir "A" Well No. 20

Wildcat Ellenburger, Silurian, Penn,

Warren McKee, Skaggs Drinkard Fields

Lea County, New Mexico

State of New Mexico

Energy and Minerals Department

Oil Conservation Division

2040 South Pacheco

Santa Fe, New Mexico 87505

Attention: Mr. Michael E. Stogner

Gentlemen:

Administrative approval, Rule 111 c.2 and Rule 104 F. (2), is requested to directionally drill the captioned well to an unorthodox bottomhole location.

This well must be directionally drilled because surface obstructions prevented staking it at the proposed bottomhole location. There were two Powerlines and one Pipeline which prevented staking at the proposed bottomhole location.

The bottomhole must be drilled in this location due to geological conditions.

As seen on the attached maps, this location is on the crest of the McKee structure and approximately equidistant to the offsetting 40 Acre Drinkard producers. The proposed location will minimize the risk of encountering the McKee structurally low and nonproductive. In addition, the proposed location will encounter laterally discontinuous reservoirs in the Drinkard that can not be depleted from existing wellbores. Attached for your information is a copy of our directional plans, a type log section, maps, and Form C-102.

The "affected" offset operators to this well have been notified of this request (see attached offset operator's list and certified mail receipts).

Any questions concerning this request should be directed to me at (915) 688-4606.

Yours very truly,

C. Wade Howard

C. W. Howard
Engineer's Assistant

CWH:

CC: NMOCD, P. O. Box 1980, Hobbs, NM 88240.

Attachments

*Has a rig ready
to go.*

DISTRICT I
P. O. Box 1980, Hobbs, NM 88240

DISTRICT II
P. O. Drawer DD, Artesia, NM 88210

DISTRICT III
1000 Rio Brazos Rd., Aztec, NM 87410

DISTRICT IV
P. O. Box 2088, Santa Fe, NM 87504-2088

State of New Mexico
Energy, Minerals and Natural Resources Department

OIL CONSERVATION DIVISION

PO Box 2088
Santa Fe, NM 87504-2088

Form C-102
Revised February 10, 1994

Instructions on back

Submit to Appropriate District Office

State Lease-4 copies
Fee Lease-3 copies

☐ AMENDED REPORT

WELL LOCATION AND ACREAGE DEDICATION PLAT

¹ API Number		² Pool Code		³ Pool Name	
				Wildcat Ellenburger; Warren McKee; Wildcat Silurian; Wildcat Penn; Skaggs Drinkard	
⁴ Property Code		⁵ Property Name			⁶ Well Number
11130		C. H. Weir "A"			20
⁷ OGRID No.		⁸ Operator Name			⁹ Elevation
22351		TEXACO EXPLORATION & PRODUCTION, INC.			3559'

¹⁰ Surface Location									
UL or lot no.	Section	Township	Range	Lot Idn	Feet from the	North/South line	Feet from the	East/West line	⁷ County
F	12	20-S	37-E		2510'	North	2225'	West	Lea

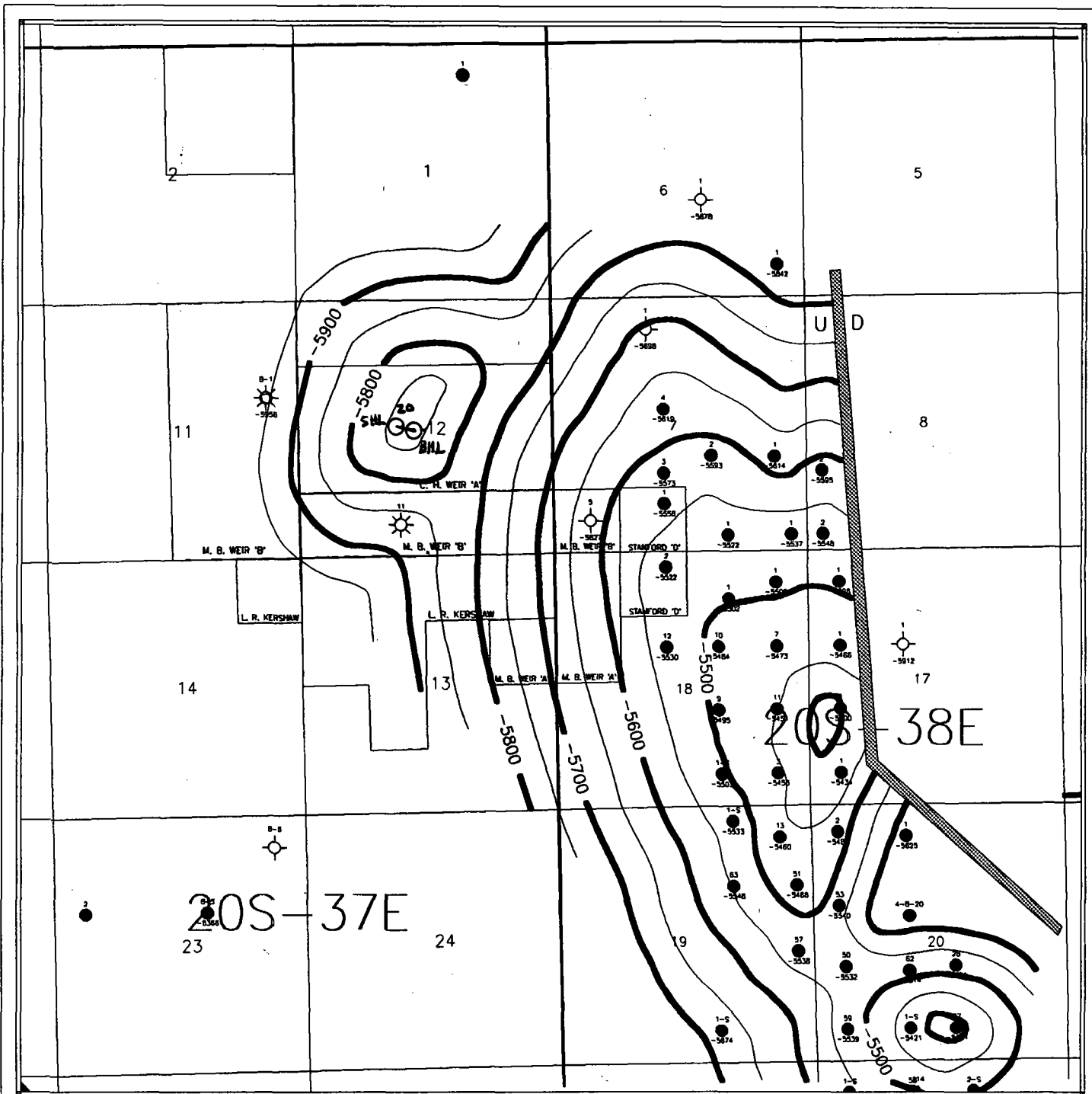
¹¹ Bottom Hole Location If Different From Surface									
UL or lot no.	Section	Township	Range	Lot Idn	Feet from the	North/South line	Feet from the	East/West line	⁷ County
F	12	20-S	37-E		2630'	North	2575'	West	Lea

¹² Dedicated Acres	¹³ Joint or Infill	¹⁴ Consolidation Code	¹⁵ Order No.
40			

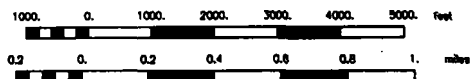
NO ALLOWABLE WILL BE ASSIGNED TO THIS COMPLETION UNTIL ALL INTERESTS HAVE BEEN CONSOLIDATED
OR A NON-STANDARD UNIT HAS BEEN APPROVED BY THE DIVISION.

<p>Amoco CONOCO CHEVRON ARCO</p> <p>Amoco CONOCO CHEVRON ARCO</p> <p>Amoco CONOCO CHEVRON ARCO</p> <p>40 Ac.</p> <p>2510'</p> <p>2630'</p> <p>2225'</p> <p>2575'</p> <p>True Bearing S71°07'52"E 370'</p> <p>20SHL</p> <p>20 BHL</p> <p>TEXACO</p> <p>TEXACO</p> <p>TEXACO</p> <p>TEXACO</p> <p>0 330 660 990 1320 1650 1980 2310 2640 2000 1500 1000 500 0</p>	¹⁶ OPERATOR CERTIFICATION
	I hereby certify that the information contained herein is true and complete to the best of my knowledge and belief.
	Signature <i>C. Wade Howard</i>
	Printed Name C. Wade Howard
	Position Engineer's Assistant
Company Texaco Expl. & Prod. Inc.	
Date March 14, 1997	
¹⁷ SURVEYOR CERTIFICATION	
I hereby certify that the well location shown on this plat was plotted from field notes of actual surveys made by me or under my supervision, and that the same is true and correct to the best of my knowledge and belief.	
Date Surveyed March 4, 1997	
Signature & Seal of Professional Surveyor <i>John S. Piper</i>	
Certificate No. 7254 John S. Piper	
Sheet	

○ = Staked Location ● = Producing Well ↗ = Injection Well ∩ = Water Supply Well ◆ = Plugged & Abandon Well



Scale 1:36804.02



Texaco Exploration & Production, Inc.		
SKAGGS - WARREN FIELD AREA STRUCTURE - TOP OF MCKEE		
Scale, Chart		4/10/97
0 = 37'	Scale 1:36804.02	



Texaco Exploration
and Production Inc

500 North Lorraine
Midland TX 79701

P O Box 3109
Midland TX 79702

April 16, 1997

GOV - STATE AND LOCAL GOVERNMENTS

Directional Drilling
Unorthodox Location
C. H. Weir "A" Well No. 20
Sec. 12, T-20-S, R-37-E
Lea County, New Mexico

TO THE OFFSET OPERATORS:

Gentlemen:

As an offset operator to the captioned Lease, you are being furnished with a copy of our Application to directionally drill this well to an unorthodox bottom hole location. If you have no objection, please sign the waiver at the bottom of this letter and return in the enclosed envelope.

Any questions concerning this request should be directed to me at (915) 688-4606.

Yours very truly,

C. Wade Howard

C. W. Howard
Engineer Assistant

CWH:cwh

File

WAIVER APPROVED:

COMPANY: _____

BY: _____

DATE: _____

**OFFSET OPERATOR'S LIST
C. H. Weir "A" Well No. 20
LEA COUNTY, NEW MEXICO**

**Chevron USA Inc.
P. O. Box 1150
Midland, Texas 79702**

**Amoco Production Company
P. O. Box 3092
Houston, Texas 77253**

**Conoco Inc.
10 Desta Dr., Suite 100W
Midland, Texas 79705**

**Atlantic Richfield Company
P. O. Box 1610
Midland, Texas 79702**

Is your RETURN ADDRESS completed on the reverse side?

SENDER:

- Complete items 1 and/or 2 for additional services.
- Complete items 3, 4a, and 4b.
- Print your name and address on the reverse of this form so that we can return this card to you.
- Attach this form to the front of the mailpiece, or on the back if space does not permit.
- Write "Return Receipt Requested" on the mailpiece below the article number.
- The Return Receipt will show to whom the article was delivered and the date delivered.

I also wish to receive the following services (for an extra fee):

1. ☐ Addressee's Address
2. ☐ Restricted Delivery

Consult postmaster for fee.

3. Article Addressed to:

Chevron USA Inc..
P. O. Box 1150
Midland, TX 79702

4a. Article Number

P 497 362 879

4b. Service Type

- | | |
|--|------------------------------------|
| <input type="checkbox"/> Registered | <input type="checkbox"/> Certified |
| <input type="checkbox"/> Express Mail | <input type="checkbox"/> Insured |
| <input checked="" type="checkbox"/> Return Receipt for Merchandise | <input type="checkbox"/> COD |

7. Date of Delivery

APR 17 1997

5. Received By: (Print Name)

6. Signature: (Addressee or Agent)

X

8. Addressee's Address (Only if requested and fee is paid)

PS Form 3811, December 1994

Domestic Return Receipt

Thank you for using Return Receipt Service.

Is your RETURN ADDRESS completed on the reverse side?

SENDER:

- Complete items 1 and/or 2 for additional services.
- Complete items 3, 4a, and 4b.
- Print your name and address on the reverse of this form so that we can return this card to you.
- Attach this form to the front of the mailpiece, or on the back if space does not permit.
- Write "Return Receipt Requested" on the mailpiece below the article number.
- The Return Receipt will show to whom the article was delivered and the date delivered.

I also wish to receive the following services (for an extra fee):

1. ☐ Addressee's Address
2. ☐ Restricted Delivery

Consult postmaster for fee.

3. Article Addressed to:

Amoco Production Co.
P. O. Box 3092
Houston, TX 77253

4a. Article Number

P 497 362 875

4b. Service Type

- | | |
|--|------------------------------------|
| <input type="checkbox"/> Registered | <input type="checkbox"/> Certified |
| <input type="checkbox"/> Express Mail | <input type="checkbox"/> Insured |
| <input checked="" type="checkbox"/> Return Receipt for Merchandise | <input type="checkbox"/> COD |

7. Date of Delivery

APR 21 1997

5. Received By: (Print Name)

6. Signature: (Addressee or Agent)

Chuck Martin

8. Addressee's Address (Only if requested and fee is paid)

PS Form 3811, December 1994

Domestic Return Receipt

Thank you for using Return Receipt Service.

Is your RETURN ADDRESS completed on the reverse side?

SENDER:

- Complete items 1 and/or 2 for additional services.
- Complete items 3, 4a, and 4b.
- Print your name and address on the reverse of this form so that we can return this card to you.
- Attach this form to the front of the mailpiece, or on the back if space does not permit.
- Write "Return Receipt Requested" on the mailpiece below the article number.
- The Return Receipt will show to whom the article was delivered and the date delivered.

I also wish to receive the following services (for an extra fee):

1. ☐ Addressee's Address
2. ☐ Restricted Delivery

Consult postmaster for fee.

3. Article Addressed to:

Atlantic Richfield Co.
P. O. Box 1610
Midland, TX 79702

4a. Article Number

P 497 362 880

4b. Service Type

- | | |
|--|------------------------------------|
| <input type="checkbox"/> Registered | <input type="checkbox"/> Certified |
| <input type="checkbox"/> Express Mail | <input type="checkbox"/> Insured |
| <input checked="" type="checkbox"/> Return Receipt for Merchandise | <input type="checkbox"/> COD |

7. Date of Delivery

APR 17 1997

5. Received By: (Print Name)

[Signature]

6. Signature: (Addressee or Agent)

X

8. Addressee's Address (Only if requested and fee is paid)

PS Form 3811, December 1994

Domestic Return Receipt

Thank you for using Return Receipt Service.

Is your RETURN ADDRESS completed on the reverse side?

SENDER:

- Complete items 1 and/or 2 for additional services.
- Complete items 3, 4a, and 4b.
- Print your name and address on the reverse of this form so that we can return this card to you.
- Attach this form to the front of the mailpiece, or on the back if space does not permit.
- Write "Return Receipt Requested" on the mailpiece below the article number.
- The Return Receipt will show to whom the article was delivered and the date delivered.

I also wish to receive the following services (for an extra fee):

1. ☐ Addressee's Address
2. ☐ Restricted Delivery

Consult postmaster for fee.

3. Article Addressed to:

Conoco Inc.
10 Desta Drive, Suite 100W
Midland, TX 79705

4a. Article Number

P 497 362 878

4b. Service Type

- | | |
|--|------------------------------------|
| <input type="checkbox"/> Registered | <input type="checkbox"/> Certified |
| <input type="checkbox"/> Express Mail | <input type="checkbox"/> Insured |
| <input checked="" type="checkbox"/> Return Receipt for Merchandise | <input type="checkbox"/> COD |

7. Date of Delivery

4-17-97

5. Received By: (Print Name)

Anita Gonzales

8. Addressee's Address (Only if requested and fee is paid)

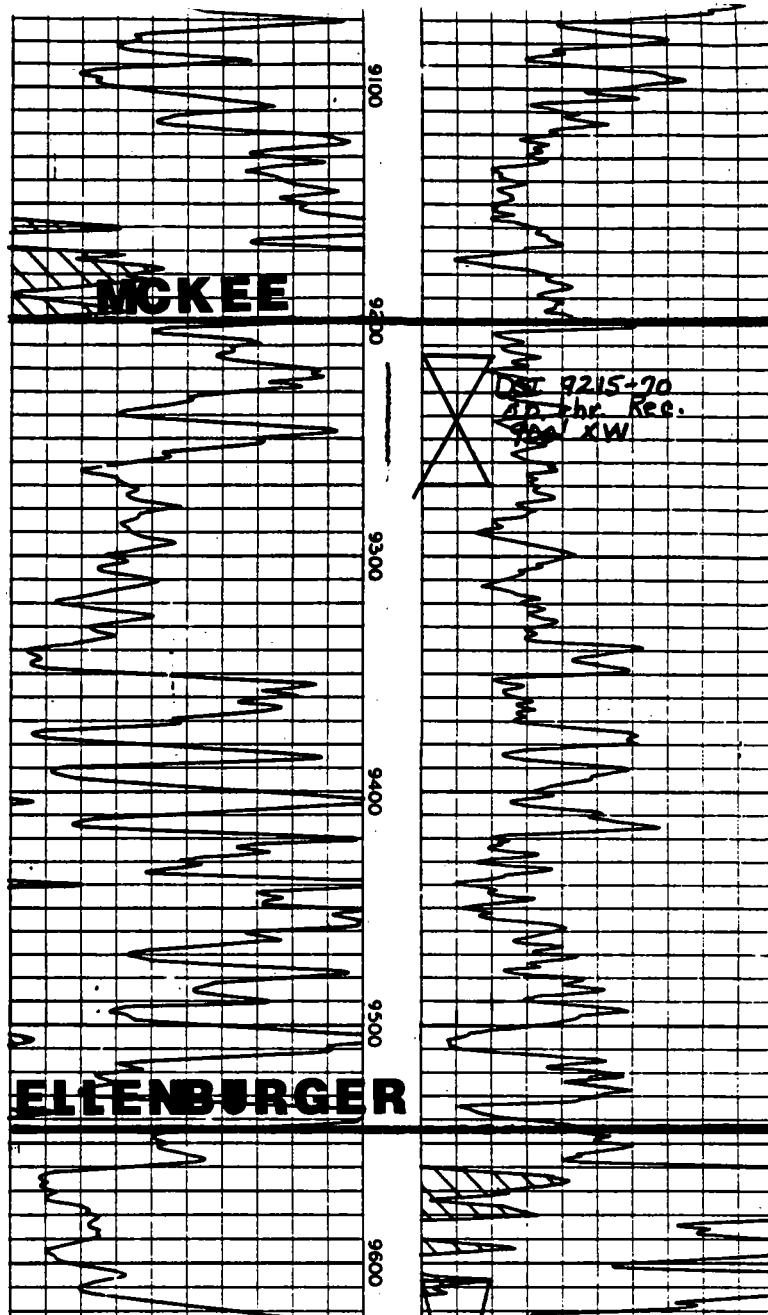
PS Form 3811, December 1994

Domestic Return Receipt

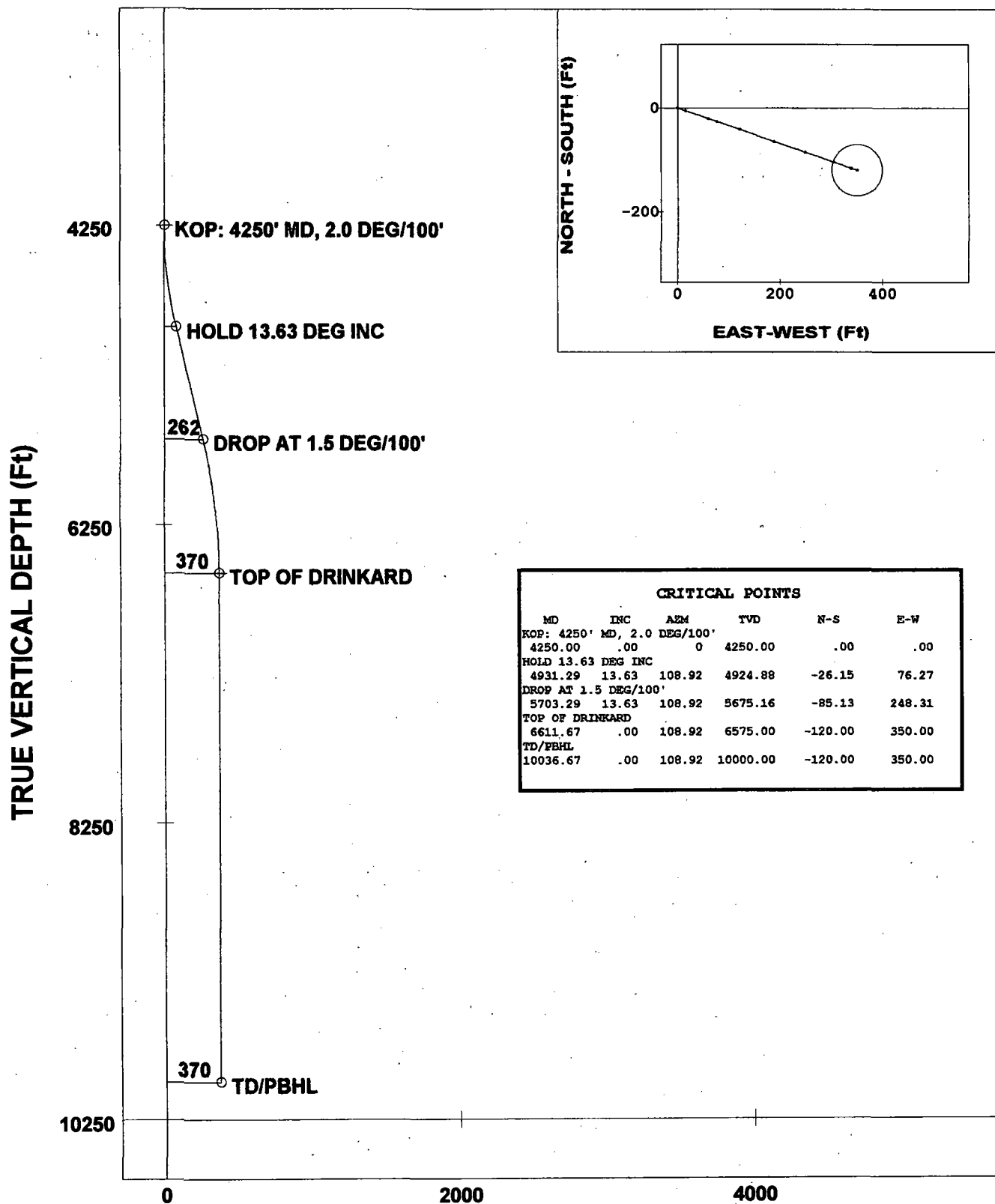
Thank you for using Return Receipt Service.

TYPE LOG

CONOCO
SEMURBURGER NO. 5A
SEC. 19, T20S, R38E



Job Number: P97-175
 Company: TEXACO E & P, INC.
 Lease/Well: C. H. WEIR A #20
 Location: LEA COUNTY, NEW MEXICO
 File name: C:\WINSERVE\CHWEIR20.SVY
 Date/Time: Wednesday, April 09, 1997



○ - S-SHAPED WELL PATH △ -- ▽ -- ◇ --

VERTICAL SECTION (Ft) @ 108.92°



Job Number: P97-175

Company: TEXACO E & P, INC.

Lease/Well: C. H. WEIR A #20

Location: LEA COUNTY, NEW MEXICO

Rig Name:

RKB:

G.L. or M.S.L.:

State/Country:

Declination:

Grid:

File name: C:\WINSERVE\CHWEIR20.SVY

Date/Time: 09-Apr-97 / 19:57

Curve Name: S-SHAPED WELL PATH

PHOENIX DRILLING SERVICES, INC.

WINSERVE SURVEY CALCULATIONS

Minimum Curvature Method

Vertical Section Plane 108.92

Measured Depth FT	Incl Angle Deg	Drift Direction Deg	True Vertical Depth	Subsea TVD FT	N-S FT	E-W FT	Vertical Section FT	CLOSURE Distance FT	Direction Deg	Dogleg Severity Deg/100
KOP: 4250' MD, 2.0 DEG/100'										
4250.00	.00	.00	4250.00	675.00	.00	.00	.00	.00	.00	.00
4350.00	2.00	108.92	4349.98	774.98	-.57	1.65	1.75	1.75	108.92	2.00
4450.00	4.00	108.92	4449.84	874.84	-2.26	6.60	6.98	6.98	108.92	2.00
4550.00	6.00	108.92	4549.45	974.45	-5.09	14.85	15.69	15.69	108.92	2.00
4650.00	8.00	108.92	4648.70	1073.70	-9.04	26.37	27.88	27.88	108.92	2.00
4750.00	10.00	108.92	4747.47	1172.47	-14.12	41.17	43.52	43.52	108.92	2.00
4850.00	12.00	108.92	4845.62	1270.62	-20.30	59.22	62.60	62.60	108.92	2.00
HOLD 13.63 DEG INC										
4931.29	13.63	108.92	4924.88	1349.88	-26.15	76.27	80.63	80.63	108.92	2.00
5031.29	13.63	108.92	5022.07	1447.07	-33.79	98.55	104.19	104.19	108.92	.00
5131.29	13.63	108.92	5119.25	1544.25	-41.43	120.84	127.74	127.74	108.92	.00
5231.29	13.63	108.92	5216.44	1641.44	-49.07	143.12	151.30	151.30	108.92	.00
5331.29	13.63	108.92	5313.62	1738.62	-56.71	165.41	174.86	174.86	108.92	.00
5431.29	13.63	108.92	5410.81	1835.81	-64.35	187.69	198.42	198.42	108.92	.00
5531.29	13.63	108.92	5508.00	1933.00	-71.99	209.98	221.98	221.98	108.92	.00
5631.29	13.63	108.92	5605.18	2030.18	-79.63	232.26	245.53	245.53	108.92	.00
DROP AT 1.5 DEG/100'										
5703.29	13.63	108.92	5675.16	2100.16	-85.13	248.31	262.50	262.50	108.92	.00
5803.29	12.13	108.92	5772.64	2197.64	-92.36	269.39	284.78	284.78	108.92	1.50
5903.29	10.63	108.92	5870.67	2295.67	-98.76	288.04	304.50	304.50	108.92	1.50
6003.29	9.13	108.92	5969.19	2394.19	-104.32	304.27	321.65	321.65	108.92	1.50
6103.29	7.63	108.92	6068.12	2493.12	-109.04	318.04	336.22	336.22	108.92	1.50
6203.29	6.13	108.92	6167.40	2592.40	-112.93	329.37	348.19	348.19	108.92	1.50

Measured Depth FT	Incl Angle Deg	Drift Direction Deg	True Vertical Depth	Subsea TVD FT	N-S FT	E-W FT	Vertical Section FT	C L O S U R E Distance FT	Direction Deg	Dogleg Severity Deg/100
6303.29	4.63	108.92	6266.95	2691.95	-115.96	338.23	357.56	357.56	108.92	1.50
6403.29	3.13	108.92	6366.72	2791.72	-118.16	344.62	364.32	364.32	108.92	1.50
6503.29	1.63	108.92	6466.63	2891.63	-119.50	348.55	368.46	368.46	108.92	1.50
6603.29	.13	108.92	6566.62	2991.62	-120.00	349.99	369.99	369.99	108.92	1.50
TOP OF DRINKARD										
6611.67	.00	108.92	6575.00	3000.00	-120.00	350.00	370.00	370.00	108.92	1.50
7111.67	.00	108.92	7075.00	3500.00	-120.00	350.00	370.00	370.00	108.92	.00
7611.67	.00	108.92	7575.00	4000.00	-120.00	350.00	370.00	370.00	108.92	.00
8111.67	.00	108.92	8075.00	4500.00	-120.00	350.00	370.00	370.00	108.92	.00
8611.67	.00	108.92	8575.00	5000.00	-120.00	350.00	370.00	370.00	108.92	.00
9111.67	.00	108.92	9075.00	5500.00	-120.00	350.00	370.00	370.00	108.92	.00
9611.67	.00	108.92	9575.00	6000.00	-120.00	350.00	370.00	370.00	108.92	.00
TD/PBHL										
10036.67	.00	108.92	10000.00	6425.00	-120.00	350.00	370.00	370.00	108.92	.00

CMD :
OG5SECT

ONGARD
INQUIRE LAND BY SECTION

09/15/97 07:37:21
OGOMES -EMGG
PAGE NO: 1

Sec : 12 Twp : 20S Rng : 37E Section Type : NORMAL

D 40.00 Federal owned U A A A	C 40.00 Federal owned U A A	B 40.00 Fee owned U A A	A 40.00 Fee owned A
E 40.00 Fee owned A	F 40.00 Fee owned U A A A	G 40.00 Fee owned U A A A	H 40.00 Fee owned A

PF01 **HELP**
PF07 **BKWD**

PF02
PF08 **FWD**

PF03 **EXIT**
PF09 **PRINT**

PF04 **GoTo**
PF10 **SDIV**

PF05
PF11

PF06
PF12

CMD :
OG5SECT

ONGARD
INQUIRE LAND BY SECTION

09/15/97 07:37:35
OGOMES -EMGG
PAGE NO: 2

Sec : 12 Twp : 20S Rng : 37E Section Type : **NORMAL**

L 40.00 Fee owned A	K 40.00 Fee owned A P A	J 40.00 Fee owned A A A	I 40.00 Fee owned A A
M 40.00 Fee owned A A A	N 40.00 Fee owned A A A A	O 40.00 Fee owned A P	P 40.00 Fee owned A A

PF01 **HELP**
PF07 **BKWD**

PF02
PF08 **FWD**

PF03 **EXIT**
PF09 **PRINT**

PF04 **GoTo**
PF10 **SDIV**

PF05
PF11

PF06
PF12

CMD :
OG6C101

ONGARD
C101-APPLICATION FOR PERMIT TO DRILL

09/15/97 07:38:48
OGOMES -EMGG

OGRID Idn : 22351 API Well No: 30 25 34096 APD Status(A/C/P): A
Opr Name, Addr: **TEXACO EXPLORATION & PRODUCTION** Aprvl/Cncl Date : 08-14-1997
205 EAST BENDER
HOBBS,NM 88240

Prop Idn: 11131 C H WEIR A

Well No: 20

	U/L	Sec	Township	Range	Lot Idn	North/South	East/West
Surface Locn	: F	12	20S	37E		FTG 2510 F N	FTG 2225 F W
OCD U/L	: F		API County	: 25			

Work typ(N/E/D/P/A) : N Well typ(O/G/M/I/S/W/C): O Cable/Rotary (C/R) : R
Lease typ(F/S/P/N/J/U/I): P Ground Level Elevation : 3559

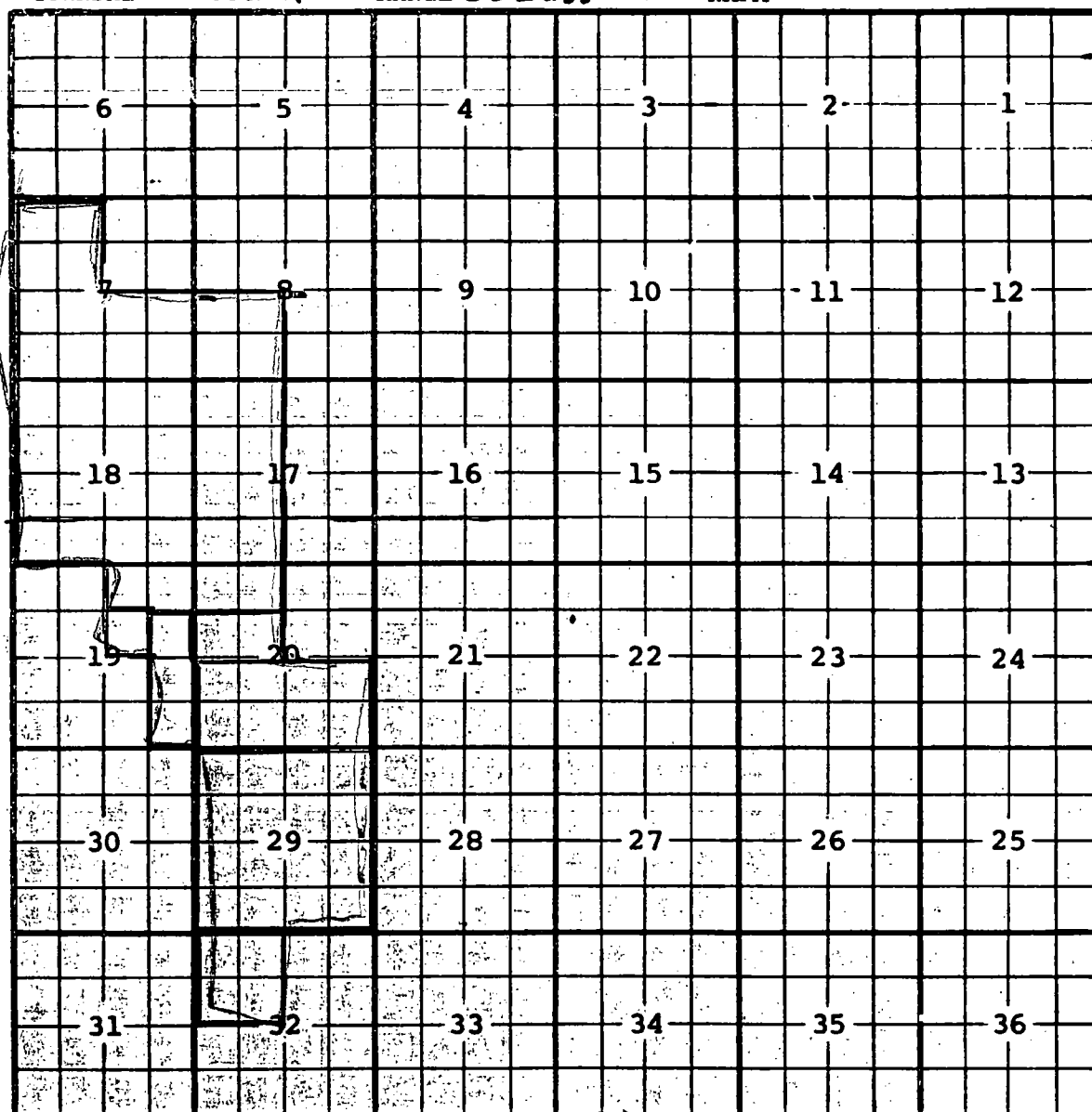
State Lease No: Multiple Comp (Y/N) : S
Prpsd Depth : 10000 Prpsd Frmtn : ELLENBURGER

E0009: Enter data to modify record

PF01 HELP	PF02	PF03 EXIT	PF04 GoTo	PF05	PF06 CONFIRM
PF07	PF08	PF09 PRINT	PF10 C102	PF11 HISTORY	PF12

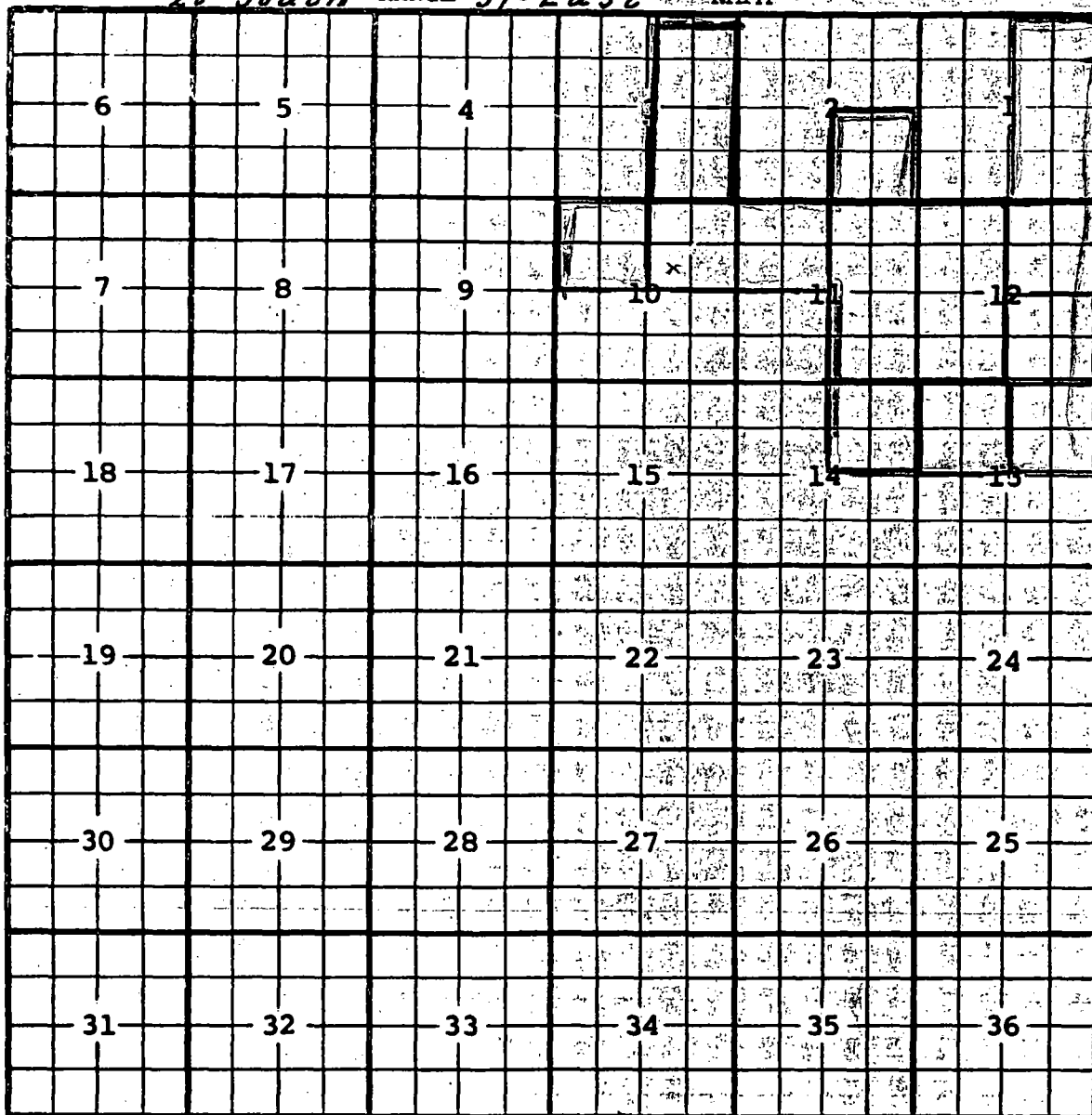
COUNTY LeaPOOL Warren - McKeeTOWNSHIP 20 SouthRANGE 38 East

NMPM

Description: All Sec. 29 (R. 50, 1-1-50)Ext: $\frac{S}{4}$ Sec. 20 (R. 132, 3-26-52) - $\frac{NW}{4}$ Sec. 32 (R. 673, 4-20-55) $\frac{SE}{4}$ $\frac{NE}{4}$ $\frac{E}{2}$ $\frac{SE}{4}$ Sec. 19 (R. 948, 1-30-57) - $\frac{S}{2}$ $\frac{NW}{4}$ Sec. 20 (R. 986, 4-29-57) $\frac{NW}{4}$ $\frac{S}{2}$ Sec. 7; $\frac{SW}{4}$ Sec. 8; $\frac{W}{2}$ Sec. 17; All Sec. 18; $\frac{N}{2}$ $\frac{NE}{4}$ Sec. 19; $\frac{N}{2}$ $\frac{NW}{4}$ Sec. 20 (R. 1059, 9-30-57) $\frac{SW}{4}$ $\frac{NE}{4}$ Sec. 19 (R. 1179, 6-1-58)

COUNTY Lea POOL Skaggs-Drinkard

TOWNSHIP 20-South RANGE 37-East NMPM



Description: $\frac{E}{2}$ Sec. 11; $\frac{N}{2}$ Sec. 12, (R-407, 1-20-54).
Ext: $\frac{NE}{4}$ Sec. 10; $\frac{NW}{4}$ Sec. 11; $\frac{SE}{4}$ Sec. 12 (R-278, 11-1-64) - $\frac{NW}{4}$ Sec. 10; $\frac{NE}{4}$ Sec. 12 (R-2857)
- $\frac{NE}{4}$ Sec. 13 (R-2911, 6-1-65) - $\frac{NW}{4}$ Sec. 13 (R-3067, 6-1-66)
Ext: $\frac{E}{2}$ Sec. 1 (R-4937, 2-1-75) EXT: $\frac{SE}{4}$ Sec. 2 (R-8901, 4-1-89)
Ext: $\frac{NE}{4}$ Sec. 14 (R-9271, 8-28-90) Ext: $\frac{E}{2}$ Sec. 5 (R-10795, 4-28-97)

4/25/97

ABOVE THIS LINE FOR DIVISION USE ONLY

NEW MEXICO OIL CONSERVATION DIVISION

- Engineering Bureau -

ADMINISTRATIVE APPLICATION COVERSHEET

THIS COVERSHEET IS MANDATORY FOR ALL ADMINISTRATIVE APPLICATIONS FOR EXCEPTIONS TO DIVISION RULES AND REGULATIONS

Application Acronyms:

[NSP-Non-Standard Proration Unit] [NSL-Non-Standard Location]
[DD-Directional Drilling] [SD-Simultaneous Dedication]
[DHC-Downhole Commingling] [CTB-Lease Commingling] [PLC-Pool/Lease Commingling]
[PC-Pool Commingling] [OLS - Off-Lease Storage] [OLM-Off-Lease Measurement]
[WFX-Waterflood Expansion] [PMX-Pressure Maintenance Expansion]
[SWD-Salt Water Disposal] [IPI-Injection Pressure Increase]
[EOR-Qualified Enhanced Oil Recovery Certification] [PPR-Positive Production Response]

[1] TYPE OF APPLICATION - Check Those Which Apply for [A]

[A] Location - Spacing Unit - Directional Drilling
☒ NSL ☐ NSP ☒ DD ☐ SD

Check One Only for [B] or [C]

[B] Commingling - Storage - Measurement
☐ DHC ☐ CTB ☐ PLC ☐ PC ☐ OLS ☐ OLM

[C] Injection - Disposal - Pressure Increase - Enhanced Oil Recovery
☐ WFX ☐ PMX ☐ SWD ☐ IPI ☐ EOR ☐ PPR

[2] NOTIFICATION REQUIRED TO: - Check Those Which Apply, or ☐ Does Not Apply

[A] ☐ Working, Royalty or Overriding Royalty Interest Owners

[B] ☒ Offset Operators, Leaseholders or Surface Owner

[C] ☐ Application is One Which Requires Published Legal Notice

[D] ☐ Notification and/or Concurrent Approval by BLM or SLO
U.S. Bureau of Land Management - Commissioner of Public Lands, State Land Office

[E] ☐ For all of the above, Proof of Notification or Publication is Attached, and/or,

[F] ☐ Waivers are Attached

[3] INFORMATION / DATA SUBMITTED IS COMPLETE - Statement of Understanding

I hereby certify that I, or personnel under my supervision, have read and complied with all applicable Rules and Regulations of the Oil Conservation Division. Further, I assert that the attached application for administrative approval is accurate and complete to the best of my knowledge and where applicable, verify that all interest (WI, RI, ORRI) is common. I further verify that all applicable API Numbers are included. I understand that any omission of data, information or notification is cause to have the application package returned with no action taken.

Note: Statement must be completed by an individual with supervisory capacity.

C. WADE HOWARD
Print or Type Name

C. Wade Howard
Signature

ENGINEER ASSISTANT
Title

4/23/97
Date



Texaco Exploration
and Production Inc

500 North Loraine
Midland TX 79701

P O Box 3109
Midland TX 79702

April 16, 1997

GOV - STATE AND LOCAL GOVERNMENTS

Directional Drilling

Unorthodox Location

C. H. Weir "A" Well No. 20

Wildcat Ellenburger, Silurian, Penn,

Warren McKee, Skaggs Drinkard Fields

Lea County, New Mexico

State of New Mexico

Energy and Minerals Department

Oil Conservation Division

2040 South Pacheco

Santa Fe, New Mexico 87505

Attention: Mr. Michael E. Stogner

Gentlemen:

Administrative approval, Rule 111 c.2 and Rule 104 F. (2), is requested to directionally drill the captioned well to an unorthodox bottomhole location.

This well must be directionally drilled because surface obstructions prevented staking it at the proposed bottomhole location. There were two Powerlines and one Pipeline which prevented staking at the proposed bottomhole location.

The bottomhole must be drilled in this location due to geological conditions.

As seen on the attached maps, this location is on the crest of the McKee structure and approximately equidistant to the offsetting 40 Acre Drinkard producers. The proposed location will minimize the risk of encountering the McKee structurally low and nonproductive. In addition, the proposed location will encounter laterally discontinuous reservoirs in the Drinkard that can not be depleted from existing wellbores. Attached for your information is a copy of our directional plans, a type log section, maps, and Form C-102.

The "affected" offset operators to this well have been notified of this request (see attached offset operator's list and certified mail receipts).

Any questions concerning this request should be directed to me at (915) 688-4606.

Yours very truly,

C. Wade Howard

C. W. Howard
Engineer's Assistant

CWH:

CC: NMOCD, P. O. Box 1980, Hobbs, NM 88240

Attachments

DISTRICT I
P. O. Box 1980, Hobbs, NM 88240

DISTRICT II
P. O. Drawer DD, Artesia, NM 88210

DISTRICT III
1000 Rio Brazos Rd., Aztec, NM 87410

DISTRICT IV
P. O. Box 2088, Santa Fe, NM 87504-2088

State of New Mexico
Energy, Minerals and Natural Resources Department

OIL CONSERVATION DIVISION

PO Box 2088
Santa Fe, NM 87504-2088

Form C-102
Revised February 10, 1994

Instructions on back

Submit to Appropriate District Office

State Lease-4 copies
Fee Lease-3 copies

☐ AMENDED REPORT

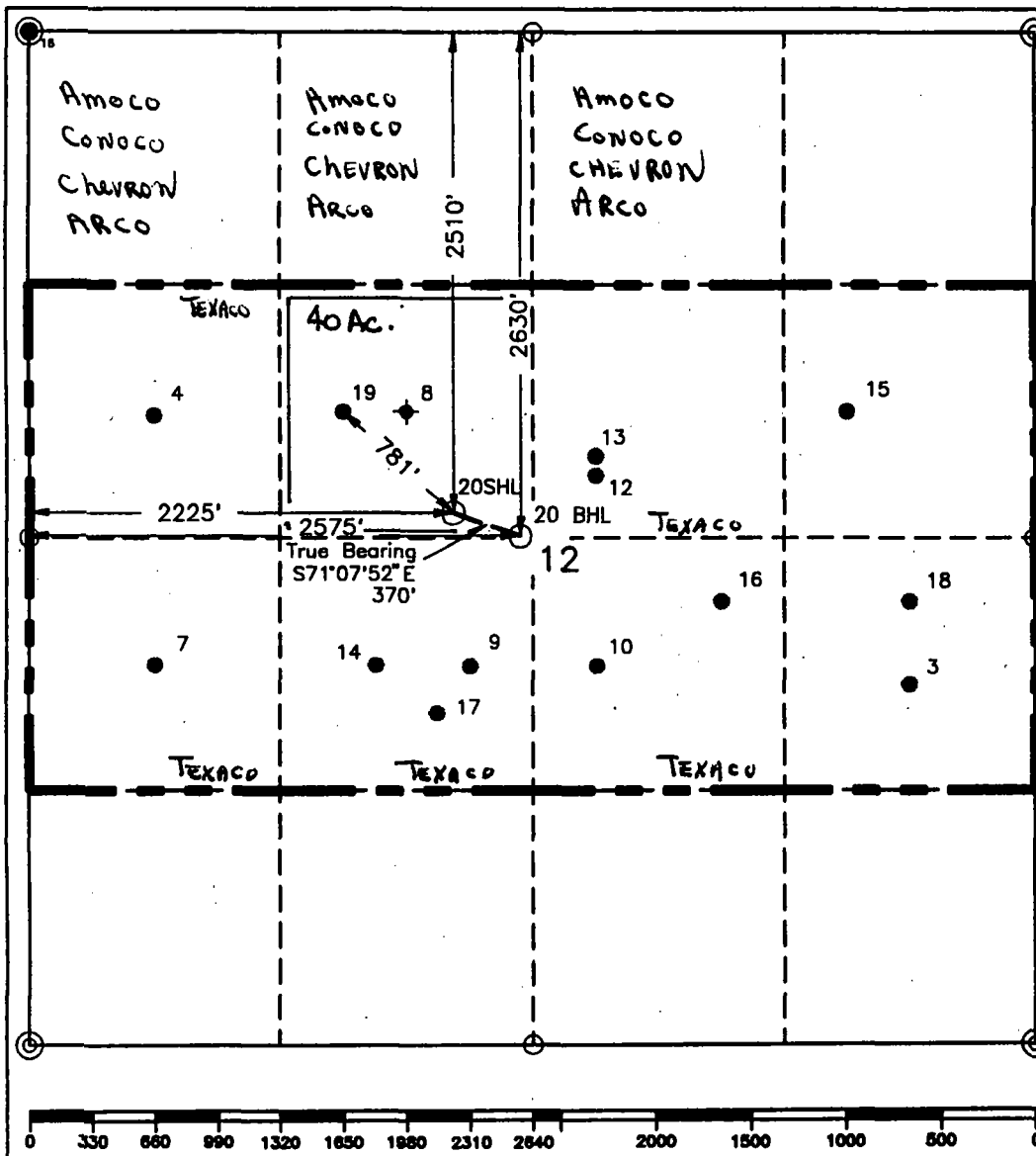
WELL LOCATION AND ACREAGE DEDICATION PLAT

¹ API Number		² Pool Code		³ Pool Name	
				Wildcat Ellenburger; Warren McKee; Wildcat Silurian; Wildcat Penn; Skaggs Drinkard	
⁴ Property Code		⁵ Property Name			⁶ Well Number
11130		C. H. Weir "A"			20
⁷ OGRID No.		⁸ Operator Name			⁹ Elevation
22351		TEXACO EXPLORATION & PRODUCTION, INC.			3559'

¹⁰ Surface Location									
UL or lot no.	Section	Township	Range	Lot Idn	Feet from the	North/South line	Feet from the	East/West line	⁷ County
F	12	20-S	37-E		2510'	North	2225'	West	Lea

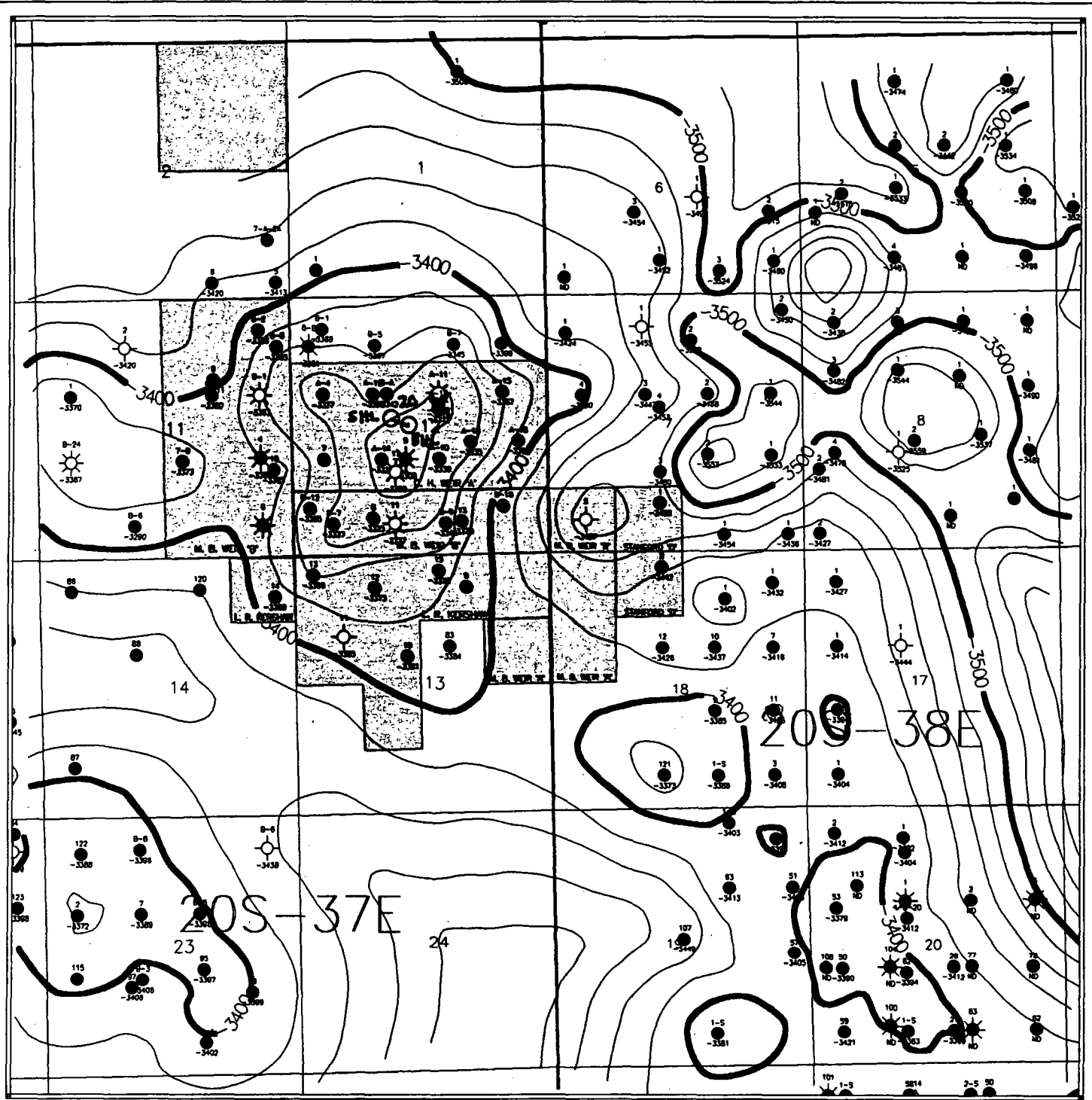
¹¹ Bottom Hole Location If Different From Surface									
UL or lot no.	Section	Township	Range	Lot Idn	Feet from the	North/South line	Feet from the	East/West line	⁷ County
F	12	20-S	37-E		2630'	North	2575'	West	Lea
¹² Dedicated Acres		¹³ Joint or Infill		¹⁴ Consolidation Code		¹⁵ Order No.			
40									

NO ALLOWABLE WILL BE ASSIGNED TO THIS COMPLETION UNTIL ALL INTERESTS HAVE BEEN CONSOLIDATED
OR A NON-STANDARD UNIT HAS BEEN APPROVED BY THE DIVISION.

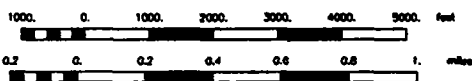


¹⁷ OPERATOR CERTIFICATION	
I hereby certify that the information contained herein is true and complete to the best of my knowledge and belief.	
Signature	
<i>C. Wade Howard</i>	
Printed Name	
C. Wade Howard	
Position	
Engineer's Assistant	
Company	
Texaco Expl. & Prod. Inc.	
Date	
March 14, 1997	
¹⁸ SURVEYOR CERTIFICATION	
I hereby certify that the well location shown on this plat was plotted from field notes of actual surveys made by me or under my supervision and that the same is true and correct to the best of my knowledge and belief.	
Date Surveyed	
March 4, 1997	
Signature & Seal of Professional Surveyor	
<i>John S. Piper</i>	
Certificate No.	
7254 John S. Piper	
Sheet	

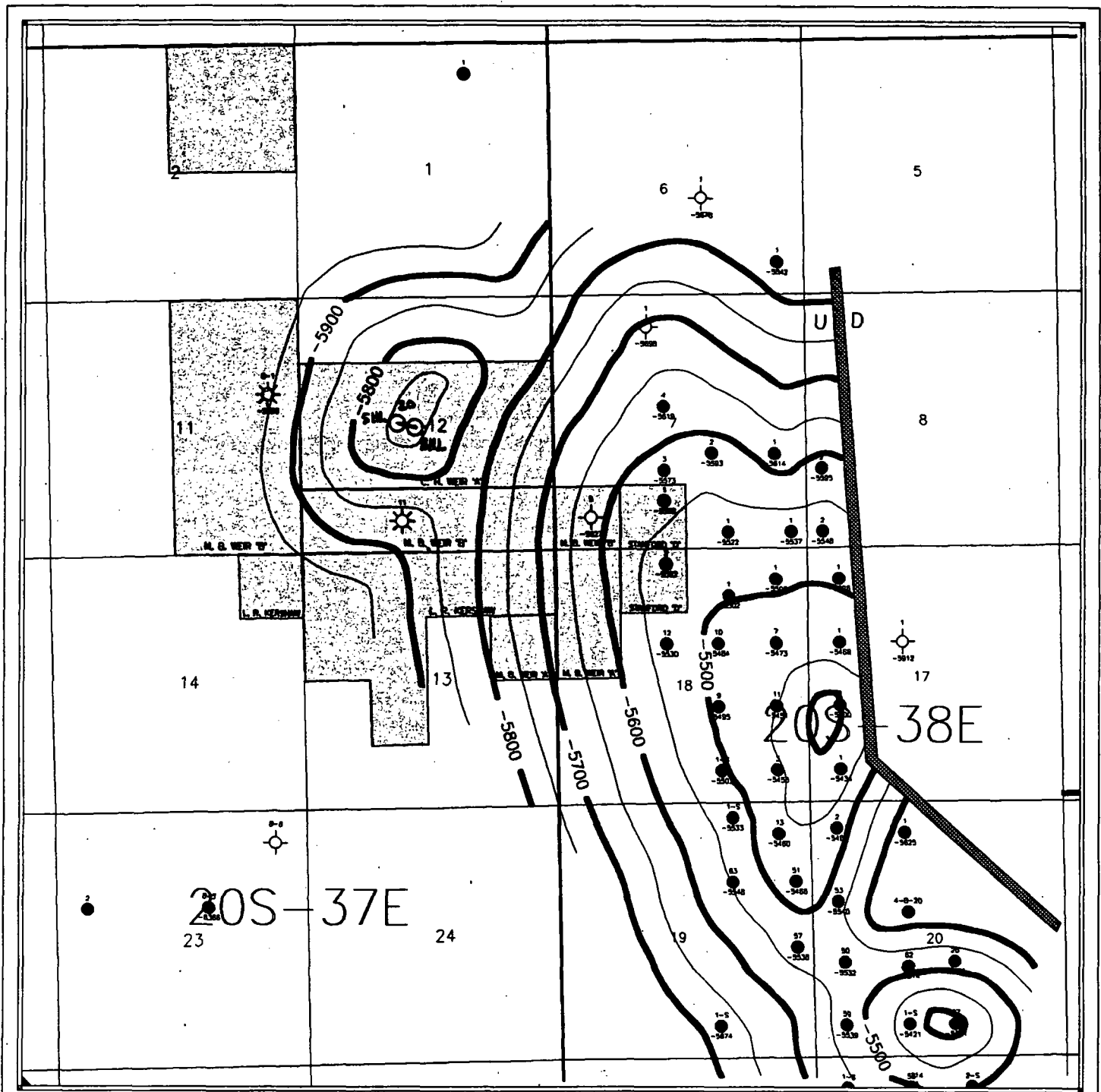
○ = Staked Location ● = Producing Well ◆ = Injection Well ◇ = Water Supply Well ⊕ = Plugged & Abandon Well



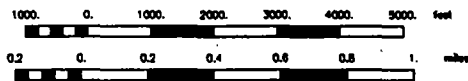
Scale 1:36072.38



Texaco Exploration & Production, Inc.		
SKAGGS FIELD AREA		
STRUCTURE - TOP OF ABO		
Info. Circle		4/8/70
Q - 27	Scale 1:36072.38	



Scale. 1:36804.02



Texaco Exploration & Production, Inc.		
SKAGGS - WARREN FIELD AREA		
STRUCTURE - TOP OF MCKEE		
Scale	4/10/77	
0 = 1"	Scale 1:36804.02	



Texaco Exploration
and Production Inc

500 North Loraine
Midland TX 79701

P O Box 3109
Midland TX 79702

April 16, 1997

GOV - STATE AND LOCAL GOVERNMENTS

Directional Drilling

Unorthodox Location

C. H. Weir "A" Well No. 20

Sec. 12, T-20-S, R-37-E

Lea County, New Mexico

TO THE OFFSET OPERATORS:

Gentlemen:

As an offset operator to the captioned Lease, you are being furnished with a copy of our Application to directionally drill this well to an unorthodox bottom hole location. If you have no objection, please sign the waiver at the bottom of this letter and return in the enclosed envelope.

Any questions concerning this request should be directed to me at (915) 688-4606.

Yours very truly,

C. Wade Howard

C. W. Howard
Engineer Assistant

CWH:cwh

File

WAIVER APPROVED:

COMPANY: _____

BY: _____

DATE: _____

**OFFSET OPERATOR'S LIST
C. H. Weir "A" Well No. 20
LEA COUNTY, NEW MEXICO**

**Chevron USA Inc.
P. O. Box 1150
Midland, Texas 79702**

**Amoco Production Company
P. O. Box 3092
Houston, Texas 77253**

**Conoco Inc.
10 Desta Dr., Suite 100W
Midland, Texas 79705**

**Atlantic Richfield Company
P. O. Box 1610
Midland, Texas 79702**

Is your RETURN ADDRESS completed on the reverse side?

SENDER:

- Complete items 1 and/or 2 for additional services.
- Complete items 3, 4a, and 4b.
- Print your name and address on the reverse of this form so that we can return this card to you.
- Attach this form to the front of the mailpiece, or on the back if space does not permit.
- Write "Return Receipt Requested" on the mailpiece below the article number.
- The Return Receipt will show to whom the article was delivered and the date delivered.

I also wish to receive the following services (for an extra fee):

- 1. ☐ Addressee's Address
- 2. ☐ Restricted Delivery

Consult postmaster for fee.

3. Article Addressed to:

Chevron USA Inc..
P. O. Box 1150
Midland, TX 79702

4a. Article Number

P 497 362 879

4b. Service Type

- ☐ Registered ☐ Certified
- ☐ Express Mail ☐ Insured
- ☒ Return Receipt for Merchandise ☐ COD

7. Date of Delivery

APR 17 1997

5. Received By: (Print Name)

6. Signature: (Addressee or Agent)

X

8. Addressee's Address (Only if requested and fee is paid)

PS Form 3811, December 1994

Domestic Return Receipt

Thank you for using Return Receipt Service.

Is your RETURN ADDRESS completed on the reverse side?

SENDER:

- Complete items 1 and/or 2 for additional services.
- Complete items 3, 4a, and 4b.
- Print your name and address on the reverse of this form so that we can return this card to you.
- Attach this form to the front of the mailpiece, or on the back if space does not permit.
- Write "Return Receipt Requested" on the mailpiece below the article number.
- The Return Receipt will show to whom the article was delivered and the date delivered.

I also wish to receive the following services (for an extra fee):

- 1. ☐ Addressee's Address
- 2. ☐ Restricted Delivery

Consult postmaster for fee.

3. Article Addressed to:

Amoco Production Co.
P. O. Box 3092
Houston, TX 77253

4a. Article Number

P 497 362 875

4b. Service Type

- ☐ Registered ☐ Certified
- ☐ Express Mail ☐ Insured
- ☒ Return Receipt for Merchandise ☐ COD

7. Date of Delivery

APR 21 1997

5. Received By: (Print Name)

6. Signature: (Addressee or Agent)

Chuck Martin

8. Addressee's Address (Only if requested and fee is paid)

PS Form 3811, December 1994

Domestic Return Receipt

Thank you for using Return Receipt Service.

Is your RETURN ADDRESS completed on the reverse side?

SENDER:

- Complete items 1 and/or 2 for additional services.
- Complete items 3, 4a, and 4b.
- Print your name and address on the reverse of this form so that we can return this card to you.
- Attach this form to the front of the mailpiece, or on the back if space does not permit.
- Write "Return Receipt Requested" on the mailpiece below the article number.
- The Return Receipt will show to whom the article was delivered and the date delivered.

I also wish to receive the following services (for an extra fee):

1. ☐ Addressee's Address
2. ☐ Restricted Delivery

Consult postmaster for fee.

3. Article Addressed to:

Atlantic Richfield Co.
P. O. Box 1610
Midland, TX 79702

4a. Article Number

P 497 362 880

4b. Service Type

- | | |
|--|------------------------------------|
| <input type="checkbox"/> Registered | <input type="checkbox"/> Certified |
| <input type="checkbox"/> Express Mail | <input type="checkbox"/> Insured |
| <input checked="" type="checkbox"/> Return Receipt for Merchandise | <input type="checkbox"/> COD |

7. Date of Delivery

APR 17 1997

5. Received By: (Print Name)

[Signature]

6. Signature: (Addressee or Agent)

X

8. Addressee's Address (Only if requested and fee is paid)

PS Form 3811, December 1994

Domestic Return Receipt

Thank you for using Return Receipt Service.

Is your RETURN ADDRESS completed on the reverse side?

SENDER:

- Complete items 1 and/or 2 for additional services.
- Complete items 3, 4a, and 4b.
- Print your name and address on the reverse of this form so that we can return this card to you.
- Attach this form to the front of the mailpiece, or on the back if space does not permit.
- Write "Return Receipt Requested" on the mailpiece below the article number.
- The Return Receipt will show to whom the article was delivered and the date delivered.

I also wish to receive the following services (for an extra fee):

1. ☐ Addressee's Address
2. ☐ Restricted Delivery

Consult postmaster for fee.

3. Article Addressed to:

Conoco Inc.
10 Desta Drive, Suite 100W
Midland, TX 79705

4a. Article Number

P 497 362 878

4b. Service Type

- | | |
|--|------------------------------------|
| <input type="checkbox"/> Registered | <input type="checkbox"/> Certified |
| <input type="checkbox"/> Express Mail | <input type="checkbox"/> Insured |
| <input checked="" type="checkbox"/> Return Receipt for Merchandise | <input type="checkbox"/> COD |

7. Date of Delivery

4-17-97

5. Received By: (Print Name)

Anita Gonzales

6. Signature: (Addressee or Agent)

8. Addressee's Address (Only if requested and fee is paid)

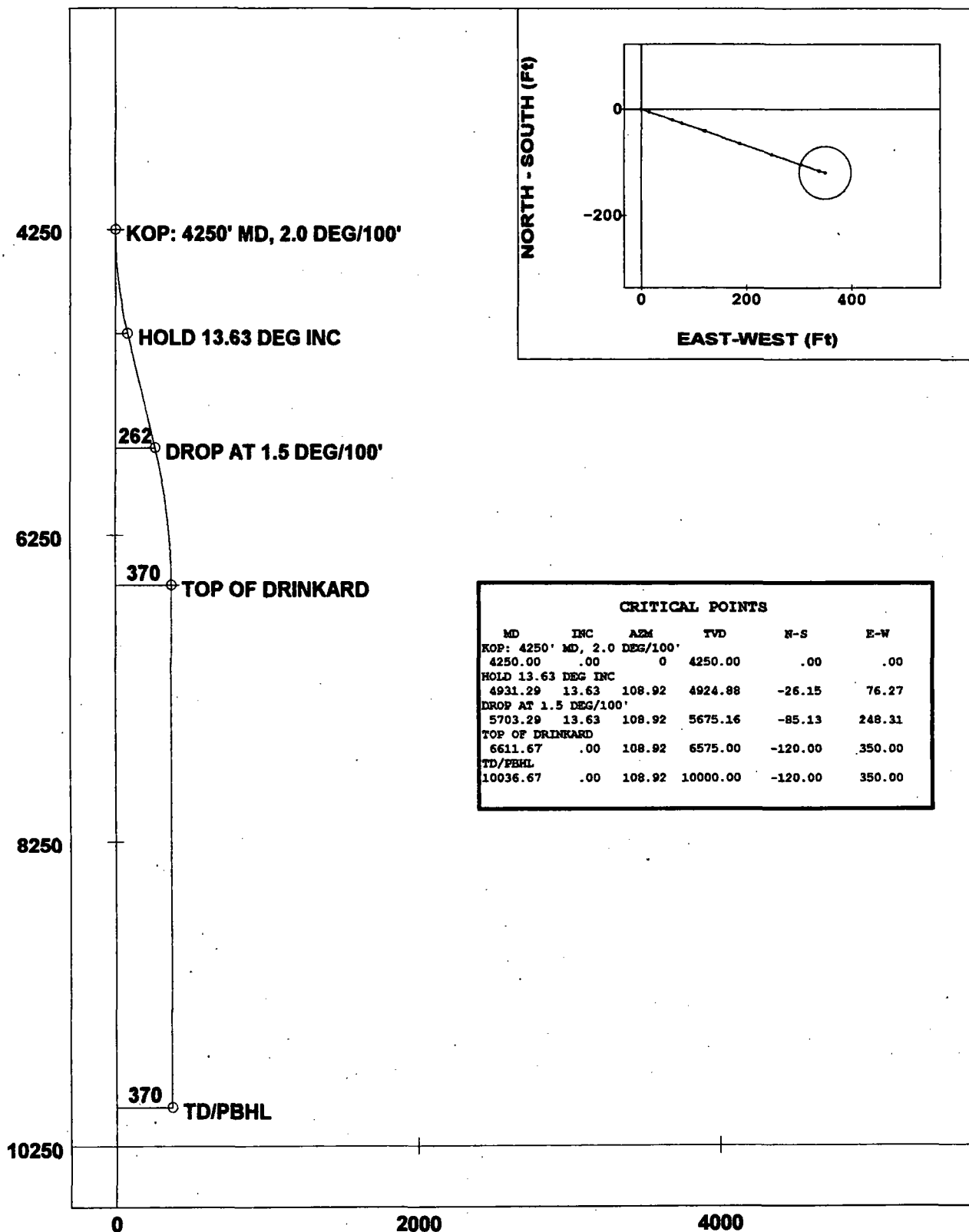
PS Form 3811, December 1994

Domestic Return Receipt

Thank you for using Return Receipt Service.

Job Number: P97-175
 Company: TEXACO E & P, INC.
 Lease/Well: C. H. WEIR A #20
 Location: LEA COUNTY, NEW MEXICO
 File name: C:\WINSERVE\CHWEIR20.SVY
 Date/Time: Wednesday, April 09, 1997

TRUE VERTICAL DEPTH (Ft)



○ — S-SHAPED WELL PATH △ — ▽ — ◇ —

VERTICAL SECTION (Ft) @ 108.92°



Job Number: P97-175
 Company: TEXACO E & P, INC.
 Lease/Well: C. H. WEIR A #20
 Location: LEA COUNTY, NEW MEXICO
 Rig Name:
 RKB:
 G.L. or M.S.L.:

State/Country:
 Declination:
 Grid:
 File name: C:\WINSERVE\CHWEIR20.SVY
 Date/Time: 09-Apr-97 / 19:57
 Curve Name: S-SHAPED WELL PATH

PHOENIX DRILLING SERVICES, INC.

WINSERVE SURVEY CALCULATIONS

Minimum Curvature Method

Vertical Section Plane 108.92

Measured Depth FT	Incl Angle Deg	Drift Direction Deg	True Vertical Depth	Subsea TVD FT	N-S FT	E-W FT	Vertical Section FT	CLOSURE Distance FT	Direction Deg	Dogleg Severity Deg/100
KOP: 4250' MD, 2.0 DEG/100'										
4250.00	.00	.00	4250.00	675.00	.00	.00	.00	.00	.00	.00
4350.00	2.00	108.92	4349.98	774.98	-.57	1.65	1.75	1.75	108.92	2.00
4450.00	4.00	108.92	4449.84	874.84	-2.26	6.60	6.98	6.98	108.92	2.00
4550.00	6.00	108.92	4549.45	974.45	-5.09	14.85	15.69	15.69	108.92	2.00
4650.00	8.00	108.92	4648.70	1073.70	-9.04	26.37	27.88	27.88	108.92	2.00
4750.00	10.00	108.92	4747.47	1172.47	-14.12	41.17	43.52	43.52	108.92	2.00
4850.00	12.00	108.92	4845.62	1270.62	-20.30	59.22	62.60	62.60	108.92	2.00
HOLD 13.63 DEG INC										
4931.29	13.63	108.92	4924.88	1349.88	-26.15	76.27	80.63	80.63	108.92	2.00
5031.29	13.63	108.92	5022.07	1447.07	-33.79	98.55	104.19	104.19	108.92	.00
5131.29	13.63	108.92	5119.25	1544.25	-41.43	120.84	127.74	127.74	108.92	.00
5231.29	13.63	108.92	5216.44	1641.44	-49.07	143.12	151.30	151.30	108.92	.00
5331.29	13.63	108.92	5313.62	1738.62	-56.71	165.41	174.86	174.86	108.92	.00
5431.29	13.63	108.92	5410.81	1835.81	-64.35	187.69	198.42	198.42	108.92	.00
5531.29	13.63	108.92	5508.00	1933.00	-71.99	209.98	221.98	221.98	108.92	.00
5631.29	13.63	108.92	5605.18	2030.18	-79.63	232.26	245.53	245.53	108.92	.00
DROP AT 1.5 DEG/100'										
5703.29	13.63	108.92	5675.16	2100.16	-85.13	248.31	262.50	262.50	108.92	.00
5803.29	12.13	108.92	5772.64	2197.64	-92.36	269.39	284.78	284.78	108.92	1.50
5903.29	10.63	108.92	5870.67	2295.67	-98.76	288.04	304.50	304.50	108.92	1.50
6003.29	9.13	108.92	5969.19	2394.19	-104.32	304.27	321.65	321.65	108.92	1.50
6103.29	7.63	108.92	6068.12	2493.12	-109.04	318.04	336.22	336.22	108.92	1.50
6203.29	6.13	108.92	6167.40	2592.40	-112.93	329.37	348.19	348.19	108.92	1.50

Measured Depth FT	Incl Angle Deg	Drift Direction Deg	True Vertical Depth	Subsea TVD FT	N-S FT	E-W FT	Vertical Section FT	CLOSURE Distance FT	Direction Deg	Dogleg Severity Deg/100
6303.29	4.63	108.92	6266.95	2691.95	-115.96	338.23	357.56	357.56	108.92	1.50
6403.29	3.13	108.92	6366.72	2791.72	-118.16	344.62	364.32	364.32	108.92	1.50
6503.29	1.63	108.92	6466.63	2891.63	-119.50	348.55	368.46	368.46	108.92	1.50
6603.29	.13	108.92	6566.62	2991.62	-120.00	349.99	369.99	369.99	108.92	1.50
TOP OF DRINKARD										
6611.67	.00	108.92	6575.00	3000.00	-120.00	350.00	370.00	370.00	108.92	1.50
7111.67	.00	108.92	7075.00	3500.00	-120.00	350.00	370.00	370.00	108.92	.00
7611.67	.00	108.92	7575.00	4000.00	-120.00	350.00	370.00	370.00	108.92	.00
8111.67	.00	108.92	8075.00	4500.00	-120.00	350.00	370.00	370.00	108.92	.00
8611.67	.00	108.92	8575.00	5000.00	-120.00	350.00	370.00	370.00	108.92	.00
9111.67	.00	108.92	9075.00	5500.00	-120.00	350.00	370.00	370.00	108.92	.00
9611.67	.00	108.92	9575.00	6000.00	-120.00	350.00	370.00	370.00	108.92	.00
TD/PBHL										
10036.67	.00	108.92	10000.00	6425.00	-120.00	350.00	370.00	370.00	108.92	.00