



STATE OF NEW MEXICO  
**ENERGY AND MINERALS DEPARTMENT**  
OIL CONSERVATION DIVISION

TONEY ANAYA  
GOVERNOR

POST OFFICE BOX 2088  
STATE LAND OFFICE BUILDING  
SANTA FE, NEW MEXICO 87501  
(505) 827-5800

June 25, 1984

The Superior Oil Co.  
P.O. Box 3901  
Midland, Texas 79702

Attention: G. E. Tate

Administrative Order TX-133

Gentlemen:

Reference is made to your request for an exception to the tubing setting requirements as contained in Division Rule 107(d)(3) for the below-named well.

Pursuant to the authority granted me by Rule 107(d)(4), you are hereby authorized to set tubing at 11,200 feet in the following well:

Well Name and Number: Mayer Federal Com Well No. 1

Location: Unit I, Sec. 26, T-24 South, Range 29 East,  
Eddy County, New Mexico

The Division reserves the right to rescind this authority in the event that waste appears to be resulting therefrom.

Very truly yours,

  
JOE D. RAMEY,  
Division Director

JDR/MES/dr

cc: Oil Conservation Division - Artesia

PV2V2005036057

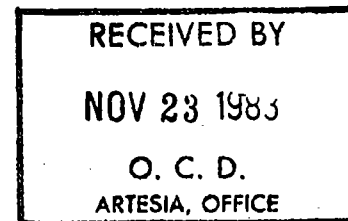
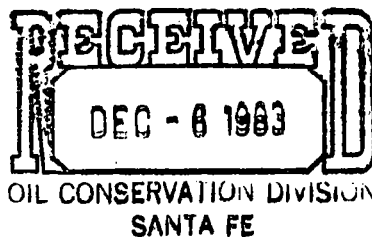
**SUPERIOR OIL**

SF

OK

November 22, 1983

State of New Mexico  
Energy & Minerals Dept.  
Oil Conservation Commission  
P.O. Box 2088  
Santa Fe, NM 87501



Attn: Mr. Mike Stogner

Attached is schematic drawing of the wellbore on our Mayer Federal Com. Well No. 1. We set a permanent packer at 11,200' and stung into it with 2-3/8" & 2-7/8" tubing. This leaves the packer setting 1516' above the top perforation which is at 12,716'. This was done in order that we might recomplete to Strawn & Wolfcamp Zones when the Atoka Zone is depleted, without having to pull the tubing.

We respectfully request an exception to Rule 107 (d) (3) in order that we may produce and deplete the Atoka Zone and recomplete to higher zones without having to load hole with fluid and pull tubing.

If additional information is required, please advise.

Yours very truly,

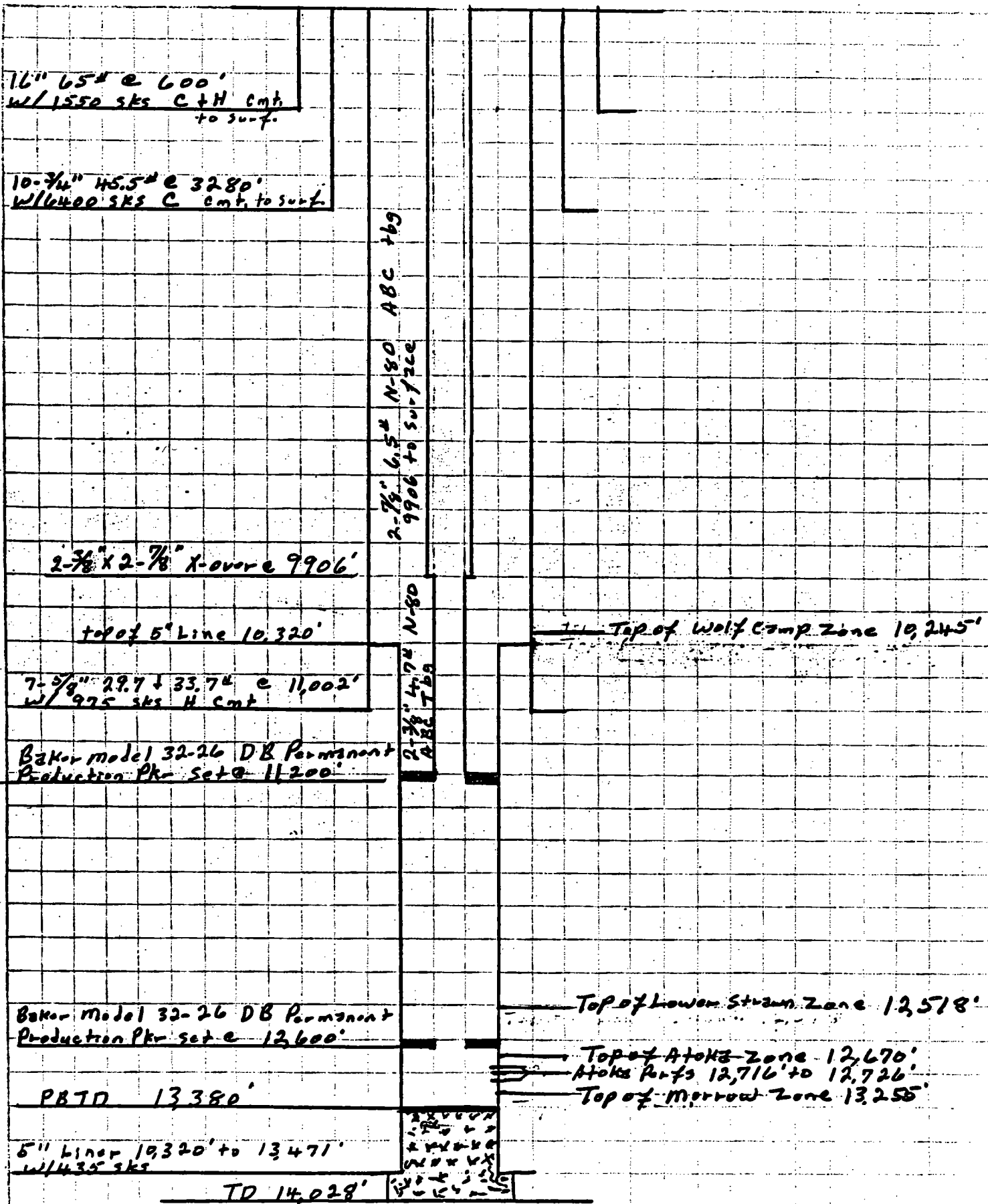
*G. E. Tate*

<sup>hmt</sup>  
G. E. Tate  
Division Operations Superintendent

WCM/stp

Superior Oil Company  
Mayer Federal Com. No. 1  
Wildcat (Atoka) Field  
Section 26, T24S, R29E  
Eddy County, New Mexico

PAGE 1 OF 1



# NM OIL CONS. COMMISSION

Drawer DD

Artesia, NM 88210

CORRECTED REPORT

NEW MEXICO OIL CONSERVATION COMMISSION

WELL LOCATION AND ACREAGE DEDICATION PLAT

ACCEPTED FOR RECORD

Form C-102

(ORIG. SGD.) DAVID K. GLASS

NOV 18 1983

Effective 1-1-83

Operator <b>The Superior Oil Company</b>			Lease <b>Mayer Federal Company</b>			Well No. <b>ROSWELL, NEW MEXICO</b>		
Unit Letter <b>I</b>	Section <b>26</b>	Township <b>24 South</b>	Range <b>29 East</b>	County <b>ROSWELL, NEW MEXICO</b>				
Actual Footage Location of Well: <b>1980</b> feet from the <b>South</b> line and <b>660</b> feet from the <b>East</b> line								
Ground Level Elev. <b>3094.6'</b>	Producing Formation <b>Atoka</b>		Pool <b>Wildcat</b>		Dedicated Acreage: <b>320</b> Acres			

1. Outline the acreage dedicated to the subject well by colored pencil or hatchure marks on the plat below.
2. If more than one lease is dedicated to the well, outline each and identify the ownership thereof (both as to working interest and royalty).
3. If more than one lease of different ownership is dedicated to the well, have the interests of all owners been consolidated by communitization, unitization, force-pooling, etc?

☐ Yes ☐ No If answer is "yes," type of consolidation \_\_\_\_\_

If answer is "no," list the owners and tract descriptions which have actually been consolidated. (Use reverse side of this form if necessary.) \_\_\_\_\_

No allowable will be assigned to the well until all interests have been consolidated (by communitization, unitization, forced-pooling, or otherwise) or until a non-standard unit, eliminating such interests, has been approved by the Commission.

## CERTIFICATION

I hereby certify that the information contained herein is true and complete to the best of my knowledge and belief.

*G. E. Tate* **G. E. Tate**

Name

Division Operations-Supt.

Position

The Superior Oil Company

Company

November 16, 1983

Date

I hereby certify that the well location shown on this plat was plotted from field notes of actual surveys made by me or under my supervision, and that the same is true and correct to the best of my knowledge and belief.

Date Surveyed

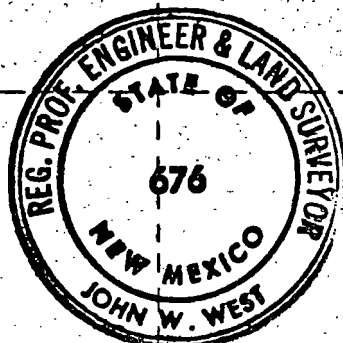
Dec. 9, 1981

Registered Professional Engineer and/or Land Surveyor

*John W. West*

Certificate No. **JOHN W. WEST 676**  
**PATRICK A. ROMERO 6663**  
**Ronald J. Eidson 3239**

**RECEIVED**  
**DEC 10 1983**  
OIL CONSERVATION DIVISION  
SANTA FE



0 330 660 990 1320 1650 1980 2310 2640 2970 3300 3630 3960 4290 4620 4950 5280 5610 5940 6270 6600