

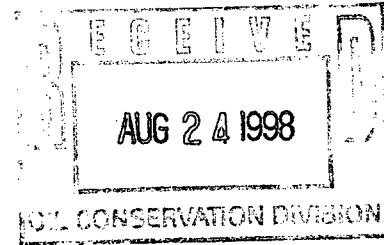
# MACK ENERGY CORPORATION

NSL 9/14/98

Post Office Box 960  
Artesia, New Mexico 88211-0960  
(505) 748-1288 / FAX (505) 746-2362

August 21, 1998

Oil Conservation Division  
Attn: Mike Stogner  
2040 South Pacheco  
Santa Fe, NM 87505



Dear Mr. Stogner:

Mack Energy Corporation has received Administrative Order NSL-4058 for the Schley Federal #8. I stated that Mack Energy was the operator of the offsetting proration unit. I have overlooked Texaco Exploration & Production working interest in the offsetting proration unit. Therefore, I am resubmitting my application for unorthodox approval.

Mack Energy respectfully requests an administrative approval without notice and hearing of the following unorthodox well location.

Because of our desire to drill this well in a timely manner, we also request your approval be expedited. The well location and legal description is as follows:

Schley Federal #8  
1580 FNL & 1650 FWL  
Sec. 29, T17S, R29E  
Eddy County, New Mexico

The well will be completed in the Paddock formation in the East Empire Yeso Pool.

Attached to this application are the following exhibits.

- A.) Well location and acreage dedication plat (form C-102) filed with the Artesia office of the Oil Conservation Division (Exhibit A).
- B.) A plat showing the proposed unorthodox locations, the respective proration units, and the offsetting proration units (Exhibit B).
- C.) A map showing the reason for the unorthodox location, the original location would have fallen on top of or too close to existing pipeline (Exhibit C).

*Oil Conservation Division*

*August 21, 1998*

*Page 2*

- D.) A lease & well location map showing that there are 2 wells staked and two other possible locations for effective 10-acre spacing on this particular 40-acre tract (Exhibit D).*

*Moving the location to the east will provide better drainage for the East Empire Yeso Pool since future locations will be located on effective 10-acre spacing.*

*By copy of this letter including the exhibits to all parties, we are notifying them by certified mail return-receipt requested of the unorthodox location.*

*Thank you for your assistance in this matter. If you have any questions, please feel free to call.*

*Sincerely,*

*MACK ENERGY CORPORATION*



*Matt J. Brewer  
Geological Engineer*

*MB\*

*Enclosures*

*cc: **CERTIFIED MAIL:***

*Attn: Michael Cervantes  
Texaco Exploration & Production  
500 North Loraine  
Midland, TX 79702*

DISTRICT I  
P.O. Box 1980, Hobbs, NM 88241-1980

DISTRICT II  
P.O. Drawer DD, Artesia, NM 88211-0719

DISTRICT III  
1000 Rio Brazos Rd., Aztec, NM 87410

DISTRICT IV  
P.O. BOX 2088, SANTA FE, N.M. 87504-2088

State of New Mexico  
Energy, Minerals and Natural Resources Department

Form C-102  
Revised February 10, 1994  
Submit to Appropriate District Office  
State Lease - 4 Copies  
Fee Lease - 3 Copies

OIL CONSERVATION DIVISION  
P.O. Box 2088  
Santa Fe, New Mexico 87504-2088

MAY ☐ AMENDED REPORT

WELL LOCATION AND ACREAGE DEDICATION PLAT

API Number	Pool Code	Pool Name
	96610	East Empire Yeso
Property Code	Property Name	Well Number
022367	SCHLEY Federal	8
OGRID No.	Operator Name	Elevation
013837	MACK ENERGY CORPORATION	3607

Surface Location

UL or lot No.	Section	Township	Range	Lot Idn	Feet from the	North/South line	Feet from the	East/West line	County
F	29	17 S	29 E		1580	NORTH	1650	WEST	EDDY

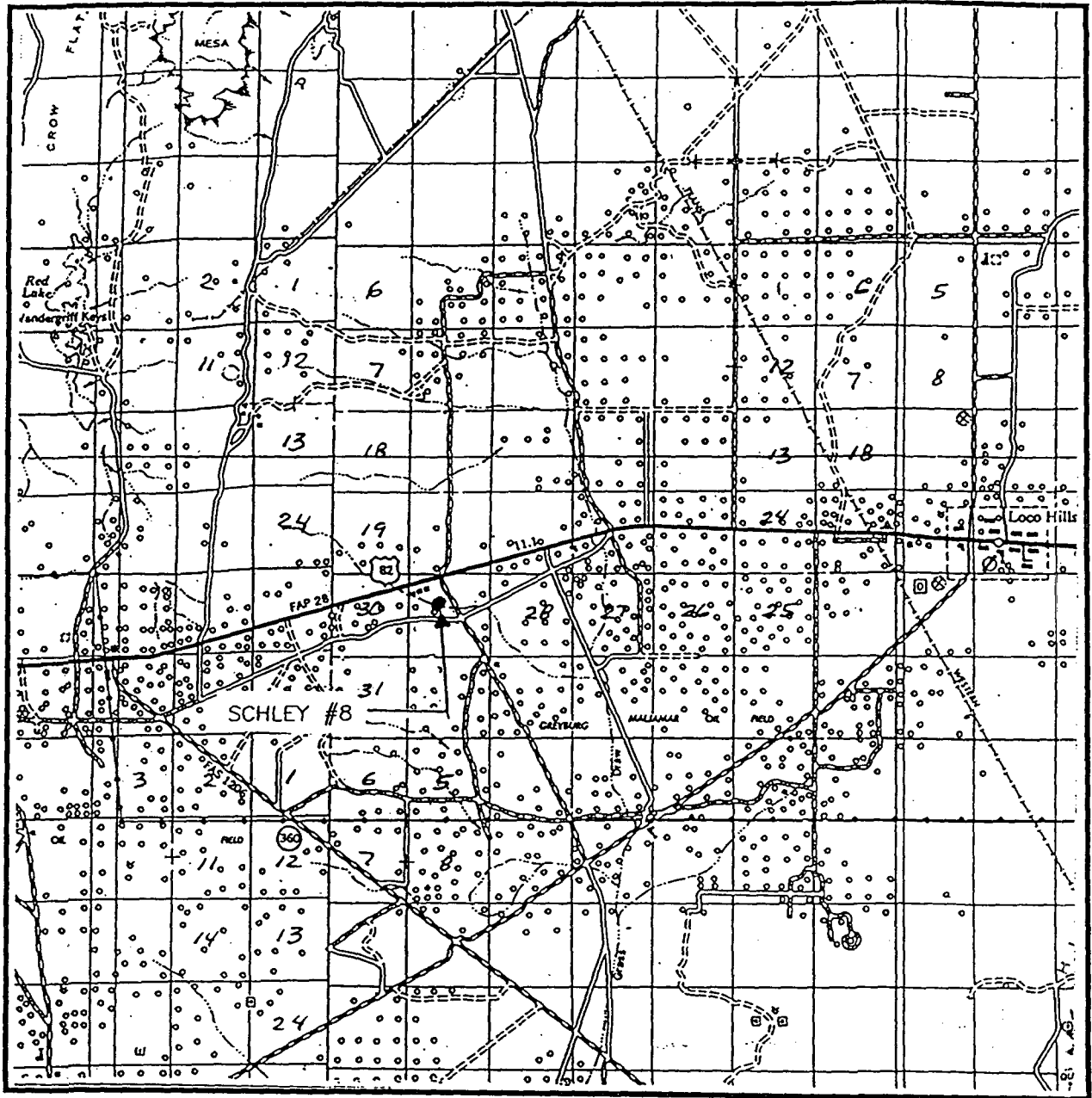
Bottom Hole Location If Different From Surface

UL or lot No.	Section	Township	Range	Lot Idn	Feet from the	North/South line	Feet from the	East/West line	County
Dedicated Acres	Joint or Infill	Consolidation Code	Order No.						

NO ALLOWABLE WILL BE ASSIGNED TO THIS COMPLETION UNTIL ALL INTERESTS HAVE BEEN CONSOLIDATED  
OR A NON-STANDARD UNIT HAS BEEN APPROVED BY THE DIVISION

	<p><b>OPERATOR CERTIFICATION</b></p> <p>I hereby certify the the information contained herein is true and complete to the best of my knowledge and belief.</p> <p><u>Matt J. Brewer</u> Signature</p> <p>Matt J. Brewer Printed Name</p> <p>Geological Engineer Title</p> <p><u>5/13/98</u> Date</p>
	<p><b>SURVEYOR CERTIFICATION</b></p> <p>I hereby certify that the well location shown on this plat was plotted from field notes of actual surveys made by me or under my supervision, and that the same is true and correct to the best of my belief.</p> <p>APRIL 22, 1998</p> <p>Date Surveyed</p> <p>Signature <u>Ronald J. Eidson</u> Professional Surveyor</p> <p>DMCC</p> <p>5-04-98</p> <p>1239</p> <p>12641</p> <p>12185</p>

# VICINITY MAP



SCALE: 1" = 2 MILES

SEC. 29 TWP. 17-S RGE. 29-E

SURVEY N.M.P.M.

COUNTY EDDY

DESCRIPTION 1580' FNL & 1650' FWL

ELEVATION 3607

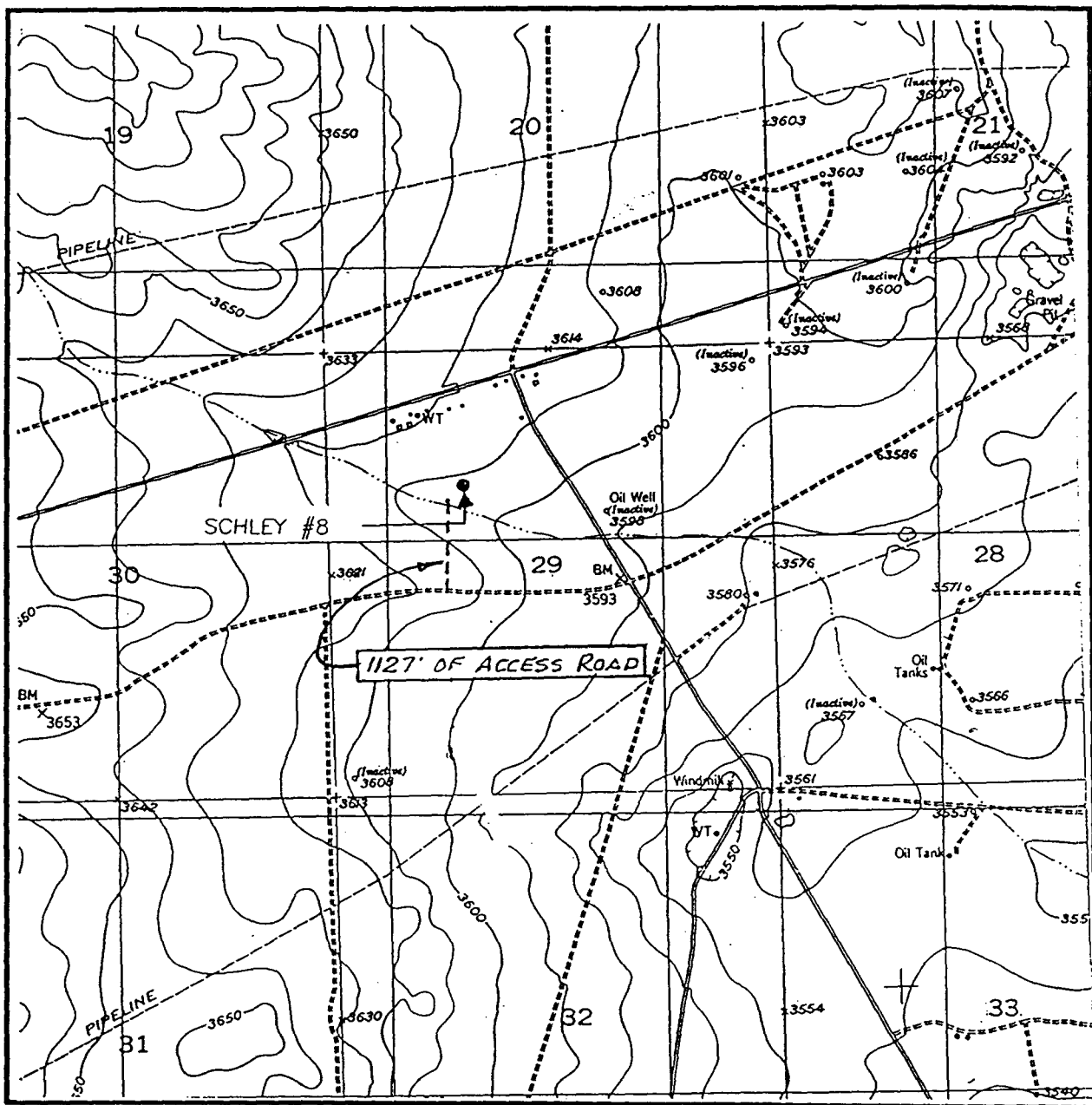
OPERATOR MAC K ENERGY CORPORATION

LEASE SCHLEY

**JOHN WEST ENGINEERING**  
**HOBBS, NEW MEXICO**

**(505) 393-3117**

# LOCATION VERIFICATION MAP



SCALE: 1" = 2000'

CONTOUR INTERVAL:  
RED LAKE SE - 10'

SEC. 29 TWP. 17-S RGE. 29-E

SURVEY N.M.P.M.

COUNTY EDDY

DESCRIPTION 1580' FNL & 1650' FWL

ELEVATION 3607

OPERATOR MACK ENERGY CORPORATION

LEASE SCHLEY

U.S.G.S. TOPOGRAPHIC MAP

RED LAKE SE, N.M.

**JOHN WEST ENGINEERING  
HOBBS, NEW MEXICO**

**(505) 393-3117**

# Exhibit B

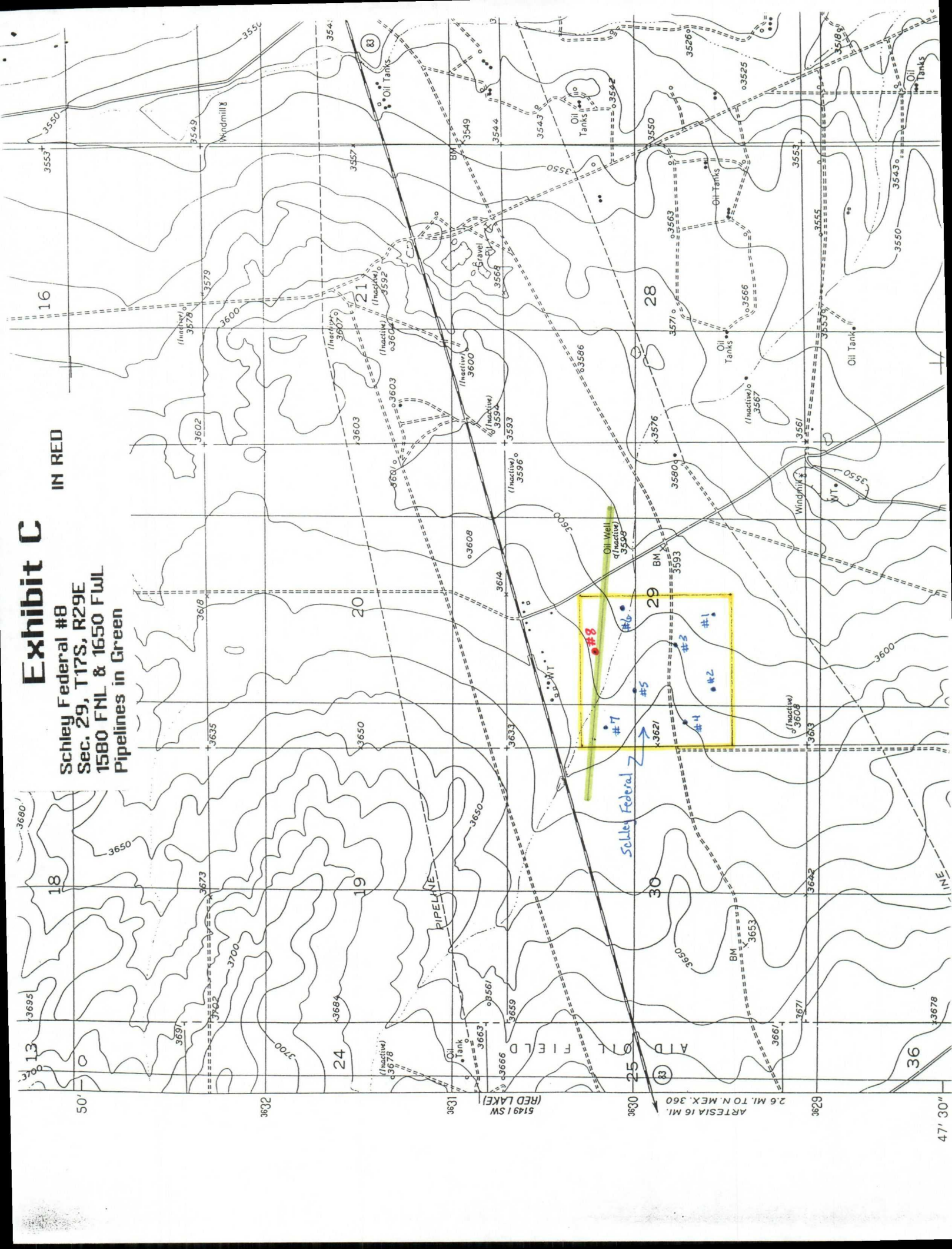
**Schley Federal #8  
Sec. 29, T17S, R29E  
1580 FNL & 1650 FWL**

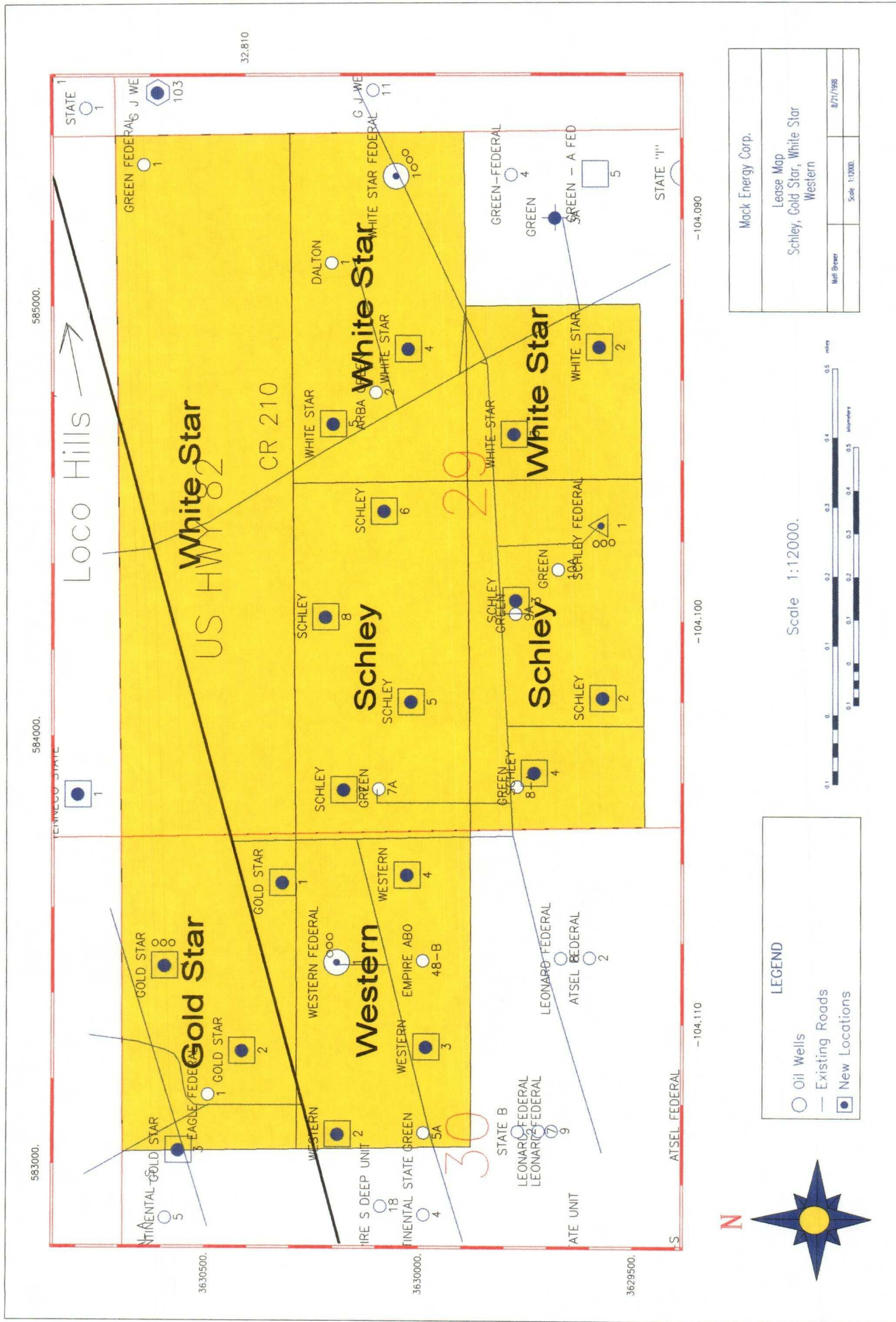


# Exhibit C

Schley Federal #8  
Sec. 29, T17S, R29E  
1580 FNL & 1650 FWL  
Pipelines in Green

IN RED





(Exhibit D)