

DHC 2/28/00

Texaco Exploration & Production Inc.

205 East Bender

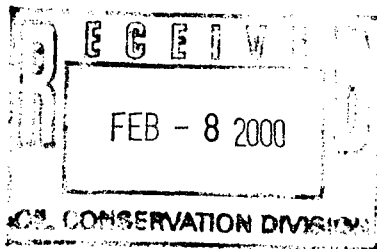
Hobbs, NM 88240

January 28, 2000

NMOCD

2040 South Pacheco
Santa Fe, New Mexico

Attn: Lori Wrotenbery, Director



2064

SUBJECT: Application to DHC L Van Etten #19, O-9-20S-37E, in the Monument Abo Southeast (96764), Weir Drinkard (63840), Monument Tubb (47090), Weir Blinebry (63780) and Monument Paddock (47085) Pools.

Dear Miss Wrotenbery,

Texaco Exploration and Production, Inc. respectfully requests administrative approval to downhole commingle the L Van Etten #19 in the Monument Abo Southeast, Weir Drinkard, Monument Tubb, Weir Blinebry and Monument Paddock Pools. Since all ownership is common, notification is not required.

The L Van Etten #19 is an early 1999 Monument Abo Southeast test which found marginal Abo production. Numerous uphole completions were equally unsuccessful. All five zones were tested together and could produce the required amount to economically justify continued production. In order to prevent underground waste an exception to rule 303A is required.

Pressure and production rate from each zone was documented during testing. Production splits will be determined from this testing and in the following manner:

$$\% \text{ Tested Zone (Oil or Gas)} = \frac{\text{Tested Zone Production}}{\text{Sum of all Tested Zones Production}}$$

If you have any questions concerning this application, please contact Alan W. Chase at (505) 397-0428.

Sincerely,

Alan W Chase

Alan W. Chase
Production Engineer
Texaco Expl & Prod Inc

Cc: Mr. Chris Williams

EXHIBIT "B" - CASE NO. 11353, ORDER NO. R-10470-A

DISTRICT I

P.O. Box 1980, Hobbs, NM 88240

DISTRICT II

811 South First St., Artesia, NM 88210

DISTRICT III

1000 Rio Brazos Rd., Aztec, NM 87410

State of New Mexico
Energy, Minerals and Natural Resources Department

OIL CONSERVATION DIVISION

2040 S. Pacheco
Santa Fe, New Mexico 87505-8429Form C-107-A
New 3-12-96

APPROVAL PROCESS:

☐ Administrative ☐ Hearing

EXISTING WELLBORE

☐ YES ☐ NO

APPLICATION FOR DOWNHOLE COMMINGLING

Texaco Exploration & Producing Inc. 205 East Bender Hobbs, New Mexico 88240
Operator Address

VAN ETTE N L 19 O-9-20S-37E Lea
Lease Well No. Unit Ltr. - Sec - Tws - Rge County

Spacing Unit Lease Types: (check 1 or more)
OGRID NO. 022351 Property Code 011127 API NO. 30-025-34528 Federal , State X , (and/or) Fee

The following facts are submitted in support of downhole commingling:	Lower Zone	Intermediate Zone	Upper Zone
1. Pool Name and Pool Code	Southeast Monument Abo 96764	Weir Drinkard 6384 0	Monument Tubb 47090 Weir Blinebry 63780 Monument Paddock 47086
2. Top And Bottom of Pay Section (Perforations)	7044'-7264'	6788'-6812'	6256'-6498' 5528'-5686' 5158'-5216'
3. Type of production (Oil or Gas)	Oil	Oil	Oil
4. Method of Production (Flowing or Artificial Lift)	Rod-pump	Rod Pump	Rod Pump
5. Bottomhole Pressure Oil Zones - Artificial Lift: Estimated Current	(Current) a. 1290 psi	a. 576 539 psi	a. 474 psi 439 psi
Gas & Oil - Flowing: Measured Current All Gas Zones: Estimated Or Measured Original	(Original) b.	b.	b.
6. Oil Gravity (* API) or Gas BTU Content	40	38	39 38
7. Producing or Shut-In? Production Marginal? (yes or no)	Shut In Yes	Shut In Yes	Shut In Yes
* If Shut-In, give date and oil/gas/ water rates of last production Note: For new zones with no production history, applicant shall be required to attach production estimates and supporting data	Date: 2/1/99 Rates: 14/63/16 Abo	Date: 10/4/99 Rate: 1/15/1 Drinkard Date: 3/7/99 Rate: 8/1/34 Tubb	Date: 5/9/99 Rate: 17/50/86 Blinebry Paddock : Estimated from nearby VE#8 Rate: 10/12/2
* If Producing, give date and oil/gas/ water rates of recent test (within 60 days)	Date: Rates:		
8. Fixed Percentage Allocation Formula -% for each zone	Abo Oil: 28% Gas: 44%	Drinkard Oil: 2% Gas: 11% Tubb Oil: 16% Gas: 1%	Blinebry Oil: 34% Gas: 35% Paddock: 20% Gas: 9%

9. If allocation Formula is based upon something other than current or past production, or is based upon some other method, submit attachments with supporting data and/or explaining method and providing rate projections or other required data.
10. Are all working, overriding, and royalty interests identical in all commingled zones? ☒ Yes ☐ No
If not, have all working, overriding, and royalty interests been notified by certified mail? ☒ Yes ☐ No
Have all offset operators been given written notice of the proposed downhole commingling? ☐ Yes ☐ No
11. Will cross-flow occur? ☐ Yes ☒ No If yes, are fluids compatible, will the Formations not be damaged, will any cross-flowed production be recovered, and will the allocation formula be reliable. ☐ Yes ☐ No (If No, attach explanation)
12. Are all produced fluids from all commingled zones compatible with other? ☒ Yes ☐ No
13. Will the value of production be decreased by commingling? ☐ Yes ☒ No (If Yes, attach explanation)
14. If this well is on, or communitized with, state or federal lands, either the Commissioner of Public Land or the United States Bureau of Land Management has been notified in writing of this application. ☒ Yes ☐ No
15. NMOCD Reference Cases for Rule 303(C) Exceptions: ORDER NO(S).
16. ATTACHMENTS:

- * C-102 for each zone to be commingled showing its spacing unit and acreage dedication. ✓
- * Production curve for each zone for at least one year. (If not available, attach explanation.) -
- * For zones with no production history, estimated production rates and supporting data.
- * Notification list of all offset operators. -
- * Notification list of working, overriding, and royalty interests for uncommon interest cases. -
- * Any additional statements, data or documents required to support commingling.

I hereby certify that the information above is true and complete to the best of my knowledge and belief

SIGNATURE Alan Chase TITLE Engineer DATE 1-19-00TYPE OR PRINT NAME Alan Chase TELEPHONE NO. (505) 397-0428

DISTRICT I

P.O. Box 1980, Hobbs, NM 88241-1980

DISTRICT II

P.O. Box Drawer DD, Artesia, NM 88211-0719

DISTRICT III

1000 Rio Brazos Rd., Aztec, NM 87410

DISTRICT IV

P.O. Box 2088, Santa Fe, NM 87504-2088

State of New Mexico

Energy, Minerals and Natural Resources Department

OIL CONSERVATION DIVISION

P.O. Box 2088

Santa Fe, New Mexico 87504-2088

Form C-10

Revised February 10, 1999

Instructions on back

Submit to Appropriate District Office

State Lease - 4 Copie

Fee Lease - 3 Copie

☐ AMENDED REPORT

WELL LOCATION AND ACREAGE DEDICATION PLAT

¹ API Number 30 025 34528	² Pool Code 96764	³ Pool Name MONUMENT ABO SOUTHEAST
⁴ Property Code 011127	⁵ Property Name VAN ETEN L.	⁶ Well No. 19
⁷ OGRID Number 022351	⁸ Operator Name TEXACO EXPLORATION & PRODUCTION INC.	⁹ Elevation 3544 GL

¹⁰ Surface Location

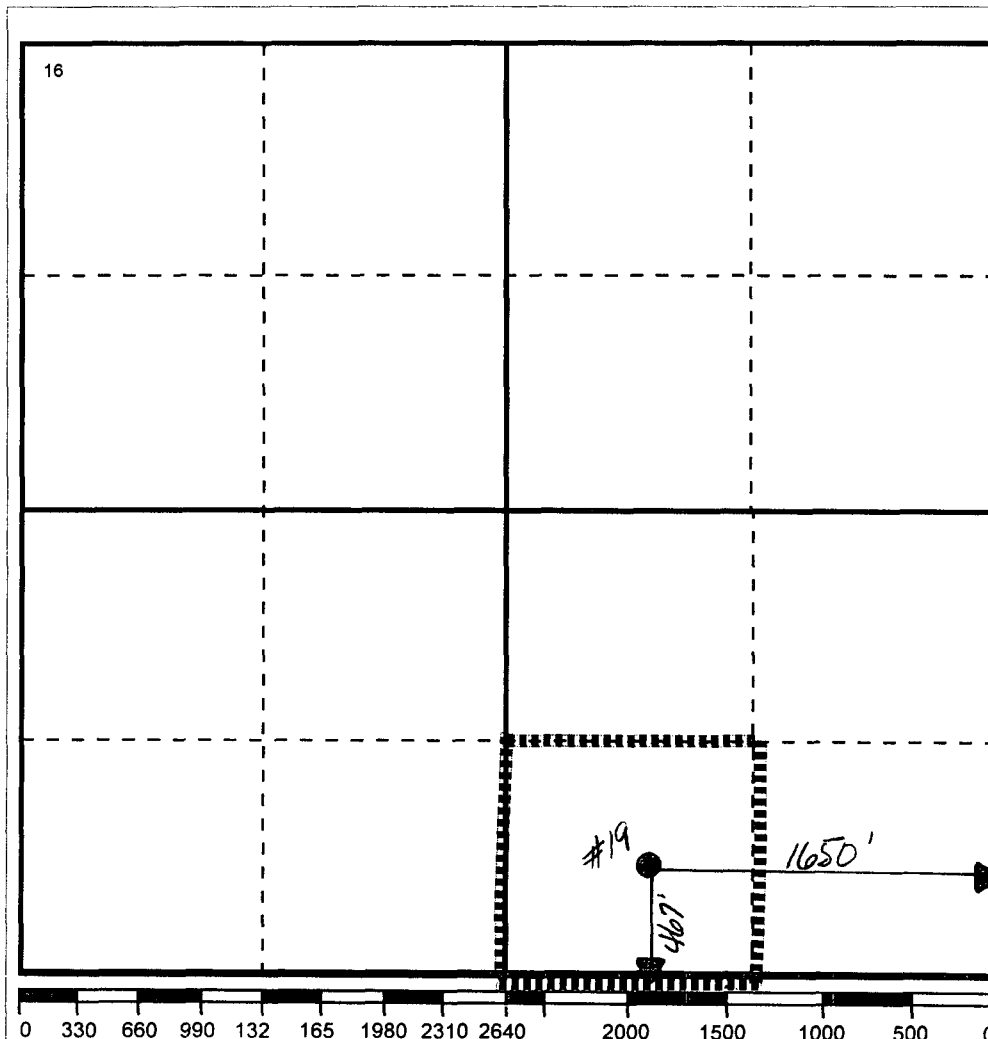
UI or lot no	Section	Township	Range	Lot.Idn	Feet From The	North/South Line	Feet From The	East/West Line	County
O	9	20S	37E		467	SOUTH	1650	EAST	LEA

¹¹ Bottom Hole Location If Different From Surface

UI or lot no	Section	Township	Range	Lot.Idn	Feet From The	North/South Line	Feet From The	East/West Line	County

¹² Dedicated Acre 40	¹³ Joint or Infill No	¹⁴ Consolidation Code	¹⁵ Order No.
------------------------------------	-------------------------------------	----------------------------------	-------------------------

NO ALLOWABLE WILL BE ASSIGNED TO THIS COMPLETION UNTIL ALL INTERESTS HAVE BEEN CONSOLIDATED
OR A NON-STANDARD UNIT HAS BEEN APPROVED BY THE DIVISION



17 OPERATOR CERTIFICATION

I hereby certify that the information
contained herein is true and complete to the
best of my knowledge and belief

Signature

J. Denise Leake

Printed Name

J. Denise Leake

Positio

Engineering Assistant

Date

2/7/00

18 SURVEYOR CERTIFICATION

I hereby certify that the well location shown
on this plat was plotted from field notes of
actual surveys made by me or under my
supervision, and that the same is true and
correct to the best of my knowledge and
belief.

Date Surveyed

Signature & Seal of

Professional Surveyor

Certificate No.

DISTRICT I

P.O. Box 1980, Hobbs, NM 88241-1980

DISTRICT II

P.O. Box Drawer DD, Artesia, NM 88211-0719

DISTRICT III

1000 Rio Brazos Rd., Aztec, NM 87410

DISTRICT IV

P.O. Box 2088, Santa Fe, NM 87504-2088

State of New Mexico

Energy, Minerals and Natural Resources Department

OIL CONSERVATION DIVISION

P.O. Box 2088

Santa Fe, New Mexico 87504-2088

Form C-10

Revised February 10, 1999

Instructions on back

Submit to Appropriate District Office

State Lease - 4 Copies

Fee Lease - 3 Copies

☐ AMENDED REPORT

WELL LOCATION AND ACREAGE DEDICATION PLAT

¹ API Number 30 025 34528	² Pool Code 63840	³ Pool Name WEIR DRINKARD
⁴ Property Code 011127	⁵ Property Name VAN ETEN L.	⁶ Well No. 19
⁷ OGRID Number 022351	⁸ Operator Name TEXACO EXPLORATION & PRODUCTION INC.	⁹ Elevation 3544 GL

¹⁰ Surface Location

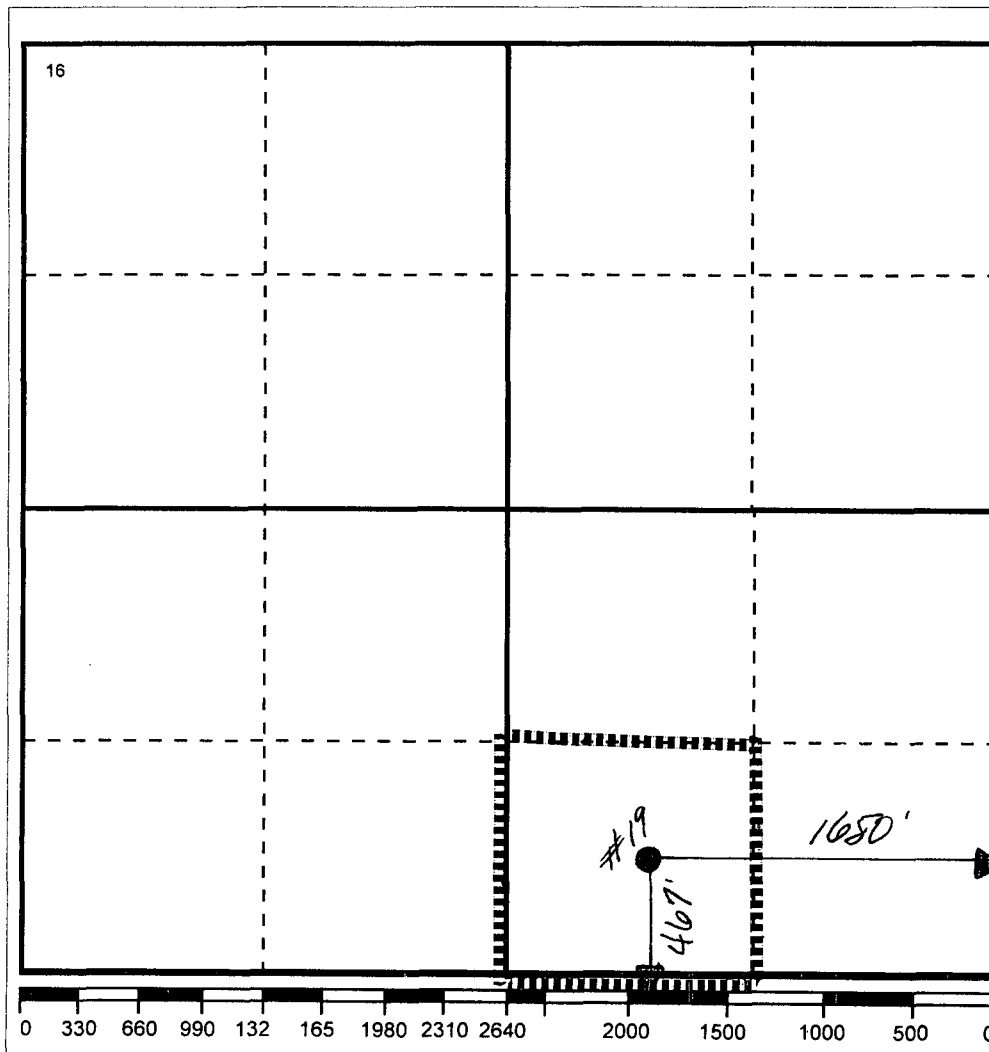
UI or lot no	Section	Township	Range	Lot.Idn	Feet From The	North/South Line	Feet From The	East/West Line	County
O	9	20S	37E		467	SOUTH	1650	EAST	LEA

¹¹ Bottom Hole Location If Different From Surface

UI or lot no	Section	Township	Range	Lot.Idn	Feet From The	North/South Line	Feet From The	East/West Line	County

¹² Dedicated Acre 40	¹³ Joint or Infill No	¹⁴ Consolidation Code	¹⁵ Order No.
------------------------------------	-------------------------------------	----------------------------------	-------------------------

NO ALLOWABLE WILL BE ASSIGNED TO THIS COMPLETION UNTIL ALL INTERESTS HAVE BEEN CONSOLIDATED
OR A NON-STANDARD UNIT HAS BEEN APPROVED BY THE DIVISION

¹⁷ OPERATOR CERTIFICATION

I hereby certify that the information contained herein is true and complete to the best of my knowledge and belief

Signature

Printed Name

J. Denise Leake

Position

Engineering Assistant

Date

2/7/00

¹⁸ SURVEYOR CERTIFICATION

I hereby certify that the well location shown on this plat was plotted from field notes of actual surveys made by me or under my supervision, and that the same is true and correct to the best of my knowledge and belief.

Date Surveyed

Signature & Seal of

Professional Surveyor

Certificate No.

DISTRICT I

P.O. Box 1980, Hobbs, NM 88241-1980

DISTRICT II

P.O. Box Drawer DD, Artesia, NM 88211-0719

DISTRICT III

1000 Rio Brazos Rd., Aztec, NM 87410

DISTRICT IV

P.O. Box 2088, Santa Fe, NM 87504-2088

State of New Mexico
Energy, Minerals and Natural Resources Department

OIL CONSERVATION DIVISION

P.O. Box 2088
Santa Fe, New Mexico 87504-2088

Form C-10

Revised February 10, 199

Instructions on back

Submit to Appropriate District Office

State Lease - 4 Copie

Fee Lease - 3 Copie

☐ AMENDED REPORT

WELL LOCATION AND ACREAGE DEDICATION PLAT

¹ API Number 30 025 34528	² Pool Code 47090	³ Pool Name MONUMENT TUBB
⁴ Property Code 011127	⁵ Property Name VAN ETEN L.	⁶ Well No. 19
⁷ OGRID Number 022351	⁸ Operator Name TEXACO EXPLORATION & PRODUCTION INC.	⁹ Elevation 3544 GL

¹⁰ Surface Location

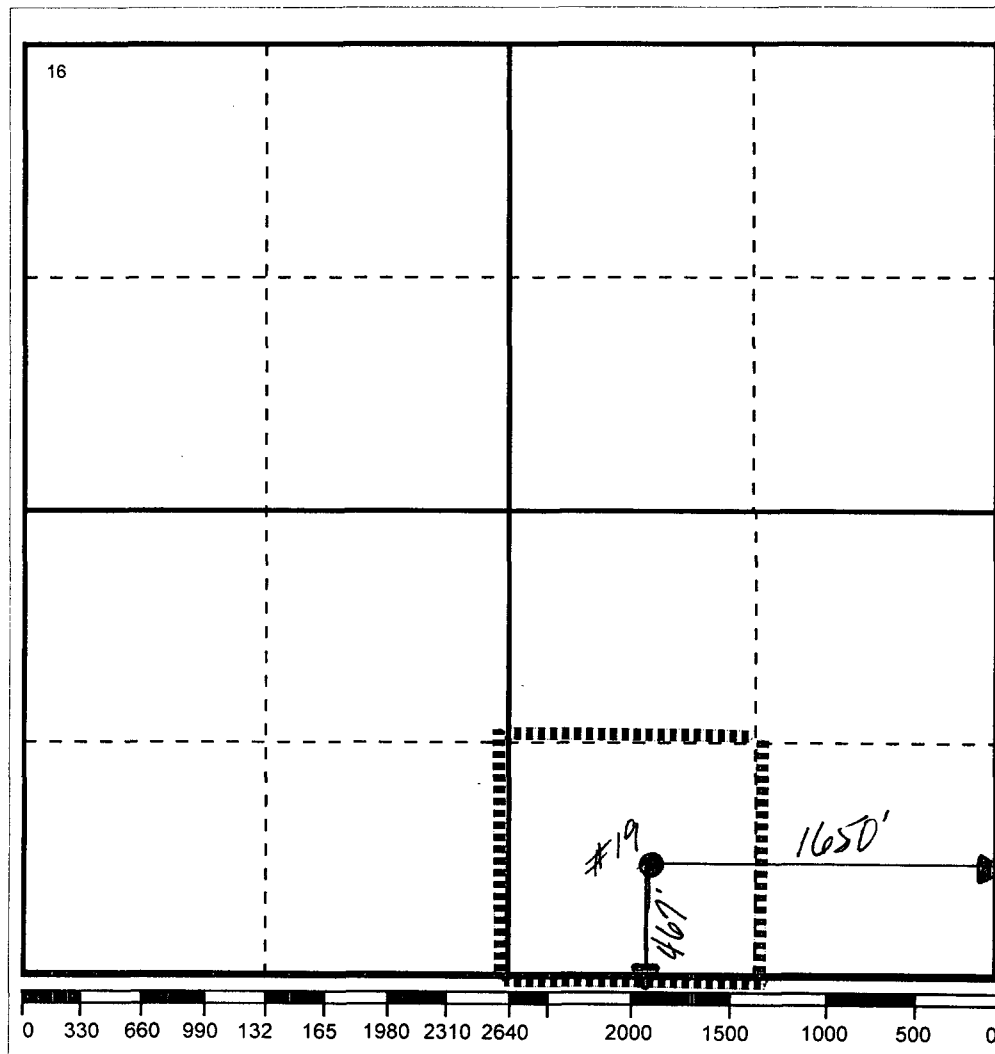
UI or lot no	Section	Township	Range	Lot.Idn	Feet From The	North/South Line	Feet From The	East/West Line	County
O	9	20S	37E		467	SOUTH	1650	EAST	LEA

¹¹ Bottom Hole Location If Different From Surface

UI or lot no	Section	Township	Range	Lot.Idn	Feet From The	North/South Line	Feet From The	East/West Line	County

¹² Dedicated Acre 40	¹³ Joint or Infill No	¹⁴ Consolidation Code	¹⁵ Order No.
------------------------------------	-------------------------------------	----------------------------------	-------------------------

NO ALLOWABLE WILL BE ASSIGNED TO THIS COMPLETION UNTIL ALL INTERESTS HAVE BEEN CONSOLIDATED
OR A NON-STANDARD UNIT HAS BEEN APPROVED BY THE DIVISION

¹⁷ OPERATOR CERTIFICATION

I hereby certify that the information
contained herein is true and complete to the
best of my knowledge and belief

Signature

J. Denise Leake

Printed Name

J. Denise Leake

Positio

Engineering Assistant

Date

2/7/00

¹⁸ SURVEYOR CERTIFICATION

I hereby certify that the well location shown
on this plat was plotted from field notes of
actual surveys made by me or under my
supervision, and that the same is true and
correct to the best of my knowledge and
belief.

Date Surveyed

Signature & Seal of

Professional Surveyor

Certificate No.

DISTRICT I

P.O. Box 1980, Hobbs, NM 88241-1980

DISTRICT II

P.O. Box Drawer DD, Artesia, NM 88211-0719

DISTRICT III

1000 Rio Brazos Rd., Aztec, NM 87410

DISTRICT IV

P.O. Box 2088, Santa Fe, NM 87504-2088

State of New Mexico
Energy, Minerals and Natural Resources Department

OIL CONSERVATION DIVISION

P.O. Box 2088
Santa Fe, New Mexico 87504-2088

Form C-10

Revised February 10, 199

Instructions on back

Submit to Appropriate District Office

State Lease - 4 Copie

Fee Lease - 3 Copie

☐ AMENDED REPORT

WELL LOCATION AND ACREAGE DEDICATION PLAT

¹ API Number 30 025 34528	² Pool Code 63780	³ Pool Name WEIR BLINEBRY
⁴ Property Code 011127	⁵ Property Name VAN ETTEN L.	⁶ Well No. 19
⁷ OGRID Number 022351	⁸ Operator Name TEXACO EXPLORATION & PRODUCTION INC.	⁹ Elevation 3544 GL

¹⁰ Surface Location

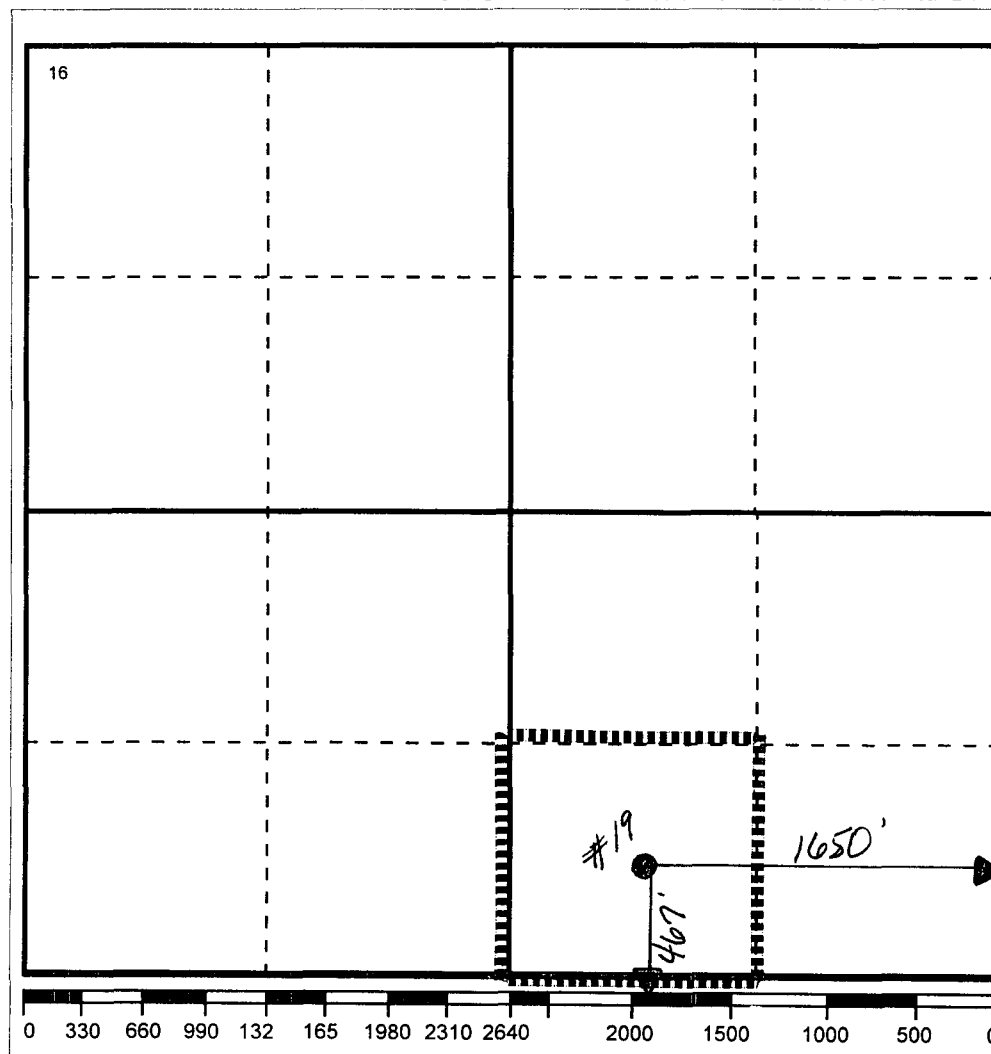
UI or lot no	Section	Township	Range	Lot.Idn	Feet From The	North/South Line	Feet From The	East/West Line	County
O	9	20S	37E		467	SOUTH	1650	EAST	LEA

¹¹ Bottom Hole Location If Different From Surface

UI or lot no	Section	Township	Range	Lot.Idn	Feet From The	North/South Line	Feet From The	East/West Line	County

¹² Dedicated Acre 40	¹³ Joint or Infill No	¹⁴ Consolidation Code	¹⁵ Order No.
------------------------------------	-------------------------------------	----------------------------------	-------------------------

NO ALLOWABLE WILL BE ASSIGNED TO THIS COMPLETION UNTIL ALL INTERESTS HAVE BEEN CONSOLIDATED
OR A NON-STANDARD UNIT HAS BEEN APPROVED BY THE DIVISION



17 OPERATOR CERTIFICATION

I hereby certify that the information
contained herein is true and complete to the
best of my knowledge and belief

Signature

Printed Name

J. Denise Leake

Positio

Engineering Assistant

Date

2/7/00

18 SURVEYOR CERTIFICATION

I hereby certify that the well location shown
on this plat was plotted from field notes of
actual surveys made by me or under my
supervision, and that the same is true and
correct to the best of my knowledge and
belief.

Date Surveyed

Signature & Seal of

Professional Surveyor

Certificate No.

DISTRICT I

P.O. Box 1980, Hobbs, NM 88241-1980

DISTRICT II

P.O. Box Drawer DD, Artesia, NM 88211-0719

DISTRICT III

1000 Rio Brazos Rd., Aztec, NM 87410

DISTRICT IV

P.O. Box 2088, Santa Fe, NM 87504-2088

State of New Mexico

Energy, Minerals and Natural Resources Department

OIL CONSERVATION DIVISION

P.O. Box 2088

Santa Fe, New Mexico 87504-2088

Form C-10

Revised February 10, 1999

Instructions on back

Submit to Appropriate District Office

State Lease - 4 Copie

Fee Lease - 3 Copie

☐ AMENDED REPORT

WELL LOCATION AND ACREAGE DEDICATION PLAT

¹ API Number 30 025 34528	² Pool Code 47085	³ Pool Name MONUMENT PADDOCK
⁴ Property Code 011127	⁵ Property Name VAN ETEN L.	⁶ Well No. 19
⁷ OGRID Number 022351	⁸ Operator Name TEXACO EXPLORATION & PRODUCTION INC.	⁹ Elevation 3544 GL

¹⁰ Surface Location

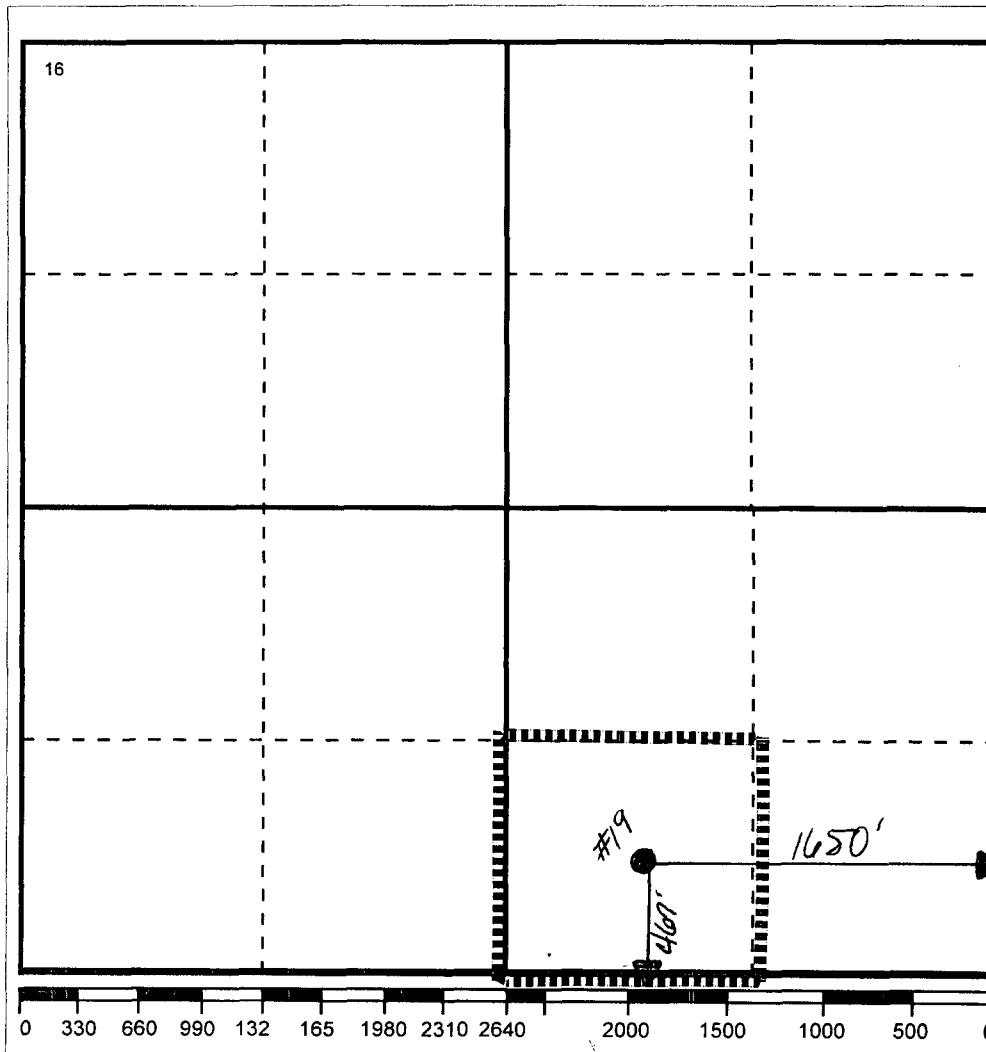
UI or lot no	Section	Township	Range	Lot.Idn	Feet From The	North/South Line	Feet From The	East/West Line	County
O	9	20S	37E		467	SOUTH	1650	EAST	LEA

¹¹ Bottom Hole Location If Different From Surface

UI or lot no	Section	Township	Range	Lot.Idn	Feet From The	North/South Line	Feet From The	East/West Line	County

¹² Dedicated Acre 40	¹³ Joint or Infill No	¹⁴ Consolidation Code	¹⁵ Order No.
------------------------------------	-------------------------------------	----------------------------------	-------------------------

NO ALLOWABLE WILL BE ASSIGNED TO THIS COMPLETION UNTIL ALL INTERESTS HAVE BEEN CONSOLIDATED
OR A NON-STANDARD UNIT HAS BEEN APPROVED BY THE DIVISION

¹⁷ OPERATOR CERTIFICATION

I hereby certify that the information contained herein is true and complete to the best of my knowledge and belief

Signature

Printed Name

J. Denise Leake

Positio

Engineering Assistant

Date

2/7/00

¹⁸ SURVEYOR CERTIFICATION

I hereby certify that the well location shown on this plat was plotted from field notes of actual surveys made by me or under my supervision, and that the same is true and correct to the best of my knowledge and belief.

Date Surveyed

Signature & Seal of

Professional Surveyor

Certificate No.