



Rec. 6-15-06

PMESD-
626151703

June 9, 2006

2006 JUN 15 AM 11 07

Mr. Mike Stogner
New Mexico Oil Conservation Division
1220 S. Saint Francis Drive
Aztec, NM 87505

Re: Canyon Largo Unit #487
SENW Sec 15-T25N-R6W
Rio Arriba County, New Mexico

Dear Mr. Stogner:

Per our conversation on Thursday, June 8, 2006, enclosed is the information you have requested for the location process for the Huntington Energy, L.L.C. non-standard location for the above referenced well. We appreciate you working with us on this matter. In the future, we will file the necessary paperwork in a timely manner.

Again, thank you for your help with this matter. If you need any additional information, please contact Cathy Smith or myself at (405) 840-9876.

Sincerely,

David M. Herritt
Member

6-15-06
(11:40 AM)

- left voice mail message
to David Herritt to provide
support info.

6-13-06 (3:57 PM)

- received a voice-mail message
from David Herritt about loc.
and to call 805-843-8386

6-7-06 (2:57 PM) talked w/

Kathy Smith that this well was
@ an NSL

(6-8) 1:30 PM

talked w/ David & Kathy
- told them to review R-10982-B
and make an asch

Huntington Energy, L.L.C.

Canyon Largo Unit #487 Location Selection Process

The east half of Section 15-T25N-R6W is a standup 320-acre Dakota spacing unit, formed by the drilling of the Canyon Largo Unit #409 well. The Canyon Largo Unit #487 well was proposed to extend the Dakota producing trend to the southwest, forming a new spacing unit encompassing the west half of Section 15. Production to the northeast is predominately from northwest-southeast trending bar sands. The Canyon Largo Unit #487 location needed to be located as far north in the spacing unit as possible to minimize the geological risk of encountering poorer reservoir quality. The enclosed production bubble map depicts the better production to the northeast.

The abandoned Canyon Largo Unit #281 location (a Chacra dry hole located 1180' FNL & 1840' FWL) was identified as a potential drilling location. Onsite inspection revealed that this old location was not suitable for a new well as it was too close to the cliff edge, creating containment issues. The grazing rights owner indicated concerns over destruction of grasslands to the south. As a result of his concerns and the increased geological risk to the south, the location was moved to the east-southeast, resulting in the non-standard location.



June 9, 2006

ConocoPhillips Company
San Juan Business Unit
P.O. Box 4289
Farmington, New Mexico 87499-4289

Attn: Ben Malone
Staff Landman

Re: Waiver of Location Exception
Canyon Largo Unit Well #487
W/2 of Section 15, T25N-R6W
Rio Arriba County, NM


Gentlemen ;

Huntington Energy, L.L.C. recently drilled and completed the CLU # 487, a Dakota well located 1445 feet from the North line and 2105 feet from the West line of Section 15, T25N-R6W, Rio Arriba County, New Mexico. I am enclosing a survey plat depicting the well's location. Huntington originally was going to locate this well further to the West, but because this was on the edge of a canyon, and because of the geological risk of moving south, along with the grazing lessee's input, Huntington moved it to its present location. This well is located 535 feet from the East line of the W/2 of Section 15, which is a non-standard well location for this 320 acre standup proration/spacing Dakota unit.

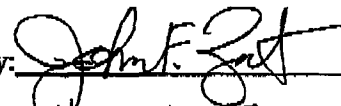
Burlington Resources Oil & Gas LP is the offset operator directly to the East of the CLU # 487 and only working interest owner of the CLU # 409, a Dakota well located in the E/2 of Section 15, T25N-R6W.

Therefore, pursuant to the above, Huntington Energy, L.L.C. respectfully requests Burlington Resources Oil & Gas Company LP's approval of the non-standard well location of the CLU # 487 well, and waive any objections thereto. If you agree, please signify your approval by executing below and returning this waiver to my attention.

Sincerely,


David M. Heritt
Member

Burlington Resources Oil & Gas Company LP

By: 
Attorney-in-Fact

6301 Waterford Boulevard, Suite 400 Oklahoma City, OK 73118
405/840-9876 Fax 405/840-2011
www.huntingtonenergy.com

06/09/2006 11:24AM (GMT-05:00)

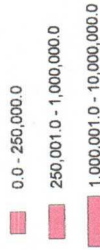
Huntington Energy, LLC

Canyon Largo Project

Dakota Cumm Production Map

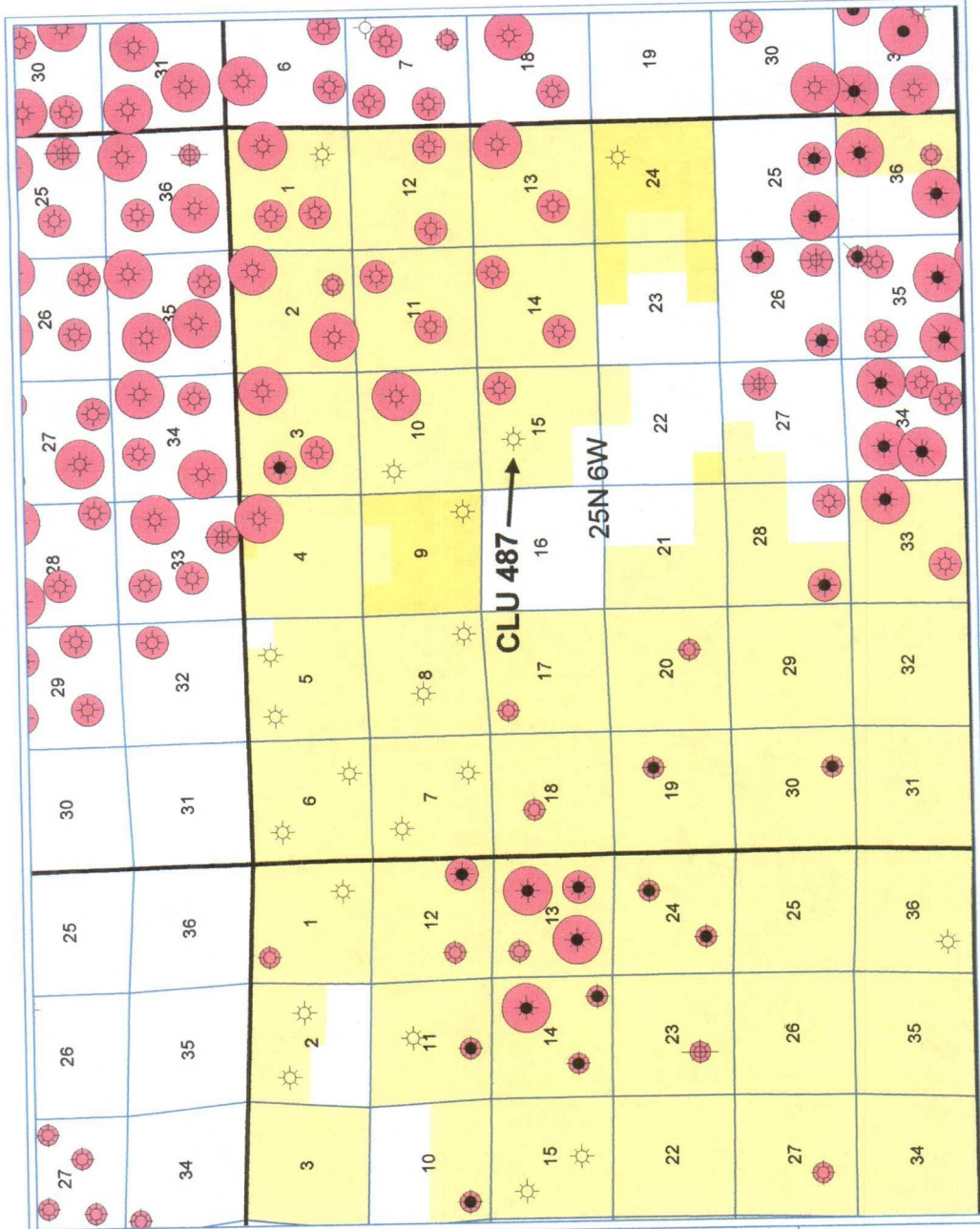


BUBBLE MAP
WELL - MCFE_DAKOTA CJB - Dakota calculated MCFE
WELL - MCFE_DAKOTA CJB - Dakota calculated MCFE



WELL SYMBOLS
Oil Well
Gas Well
Oil & Gas Well
Abandoned GAS Well
Dry Hole
Plugged And Abandoned Oil and Gas Well
Abandoned Oil and Gas Well

By: CJB
June 8, 2006



UNITED STATES
DEPARTMENT OF THE INTERIOR
BUREAU OF LAND MANAGEMENT
APPLICATION FOR PERMIT TO DRILL OR REENTER

2005 DEC 6 PM 12:48

FORM APPROVED
OMB No. 1004-0136
Expires January 31, 2004

1a. Type of Work: <input checked="" type="checkbox"/> DRILL <input type="checkbox"/> REENTER		5. Lease Serial No. SF 078884
1b. Type of Well: <input type="checkbox"/> Oil Well <input checked="" type="checkbox"/> Gas Well <input type="checkbox"/> Other <input type="checkbox"/> Single Zone <input type="checkbox"/> Multiple Zone		6. If Indian, Allottee or Tribe Name
2. Name of Operator Huntington Energy, L.L.C. 208706		7. If Unit or CA Agreement, Name and No. Canyon Largo Unit
3a. Address 6301 Waterford Blvd., Suite 400 Oklahoma City, OK 73118		8. Lease Name and Well No. 32660 Canyon Largo Unit 487
3b. Phone No. (include area code) (405) 840-9876		9. API Well No. 30-039-29717
4. Location of Well (Report location clearly and in accordance with any State requirements.) At surface SENW, Lot F 1445' FNL & 2105' FWL At proposed prod. zone		10. Field and Pool, or Exploratory Basin Dakota 71599
11. Sec., T., R., M., or Blk. and Survey or Area F Sec 15, T25N-R6W		
14. Distance in miles and direction from nearest town or post office* 35 miles SE from Blanco, NM		12. County or Parish Rio Arriba
15. Distance from proposed* location to nearest property or lease line, ft. (Also to nearest drig. unit line, if any)		13. State NM
16. No. of Acres in lease		17. Spacing Unit dedicated to this well 320 w/2
18. Distance from proposed location* to nearest well, drilling, completed, applied for, on this lease, ft.		20. BLM/BIA Bond No. on file NMB000076
19. Proposed Depth 7300'		
21. Elevations (Show whether DF, KDB, RT, GL, etc.) 6564' GL		22. Approximate date work will start*
23. Estimated duration		

24. Attachments

The following, completed in accordance with the requirements of Onshore Oil and Gas Order No. 1, shall be attached to this form:

1. Well plat certified by a registered surveyor.
2. A Drilling Plan.
3. A Surface Use Plan (if the location is on National Forest System Lands, the SUPO shall be filed with the appropriate Forest Service Office).
4. Bond to cover the operations unless covered by an existing bond on file (see Item 20 above).
5. Operator certification.
6. Such other site specific information and/or plans as may be required by the authorized officer.

25. Signature <i>Catherine Smith</i>	Name (Printed/Typed) Catherine Smith	Date 12/1/05
Title Land Associate		
Approved by (Signature) <i>James L. Smith</i>	Name (Printed/Typed)	Date 2/1/06
Title Acting Asst	Office	

Application approval does not warrant or certify the the applicant holds legal or equitable title to those rights in the subject lease which would entitle the applicant to conduct operations thereon.
Conditions of approval, if any, are attached.

Title 18 U.S.C. Section 1001 and Title 43 U.S.C. Section 1212, make it a crime for any person knowingly and willfully to make to any department or agency of the United States any false, fictitious or fraudulent statements or representations as to any matter within its jurisdiction.

*(Instructions on reverse)

HOLD C184 FOR WSL

DRILLING OPERATIONS AUTHORIZED ARE
SUBJECT TO COMPLIANCE WITH ATTACHED
"GENERAL REQUIREMENTS".

This action is subject to technical and
procedural review pursuant to 43 CFR 3165.3
and appeal pursuant to 43 CFR 3165.4



NMOC04

Revised June 10, 2003

Instructions on back

Submit to Appropriate District Office

State Lease - 4 Copies

Fee Lease - 3 Copies

☐ AMENDED REPORTDISTRICT II
1301 W. Grand Avenue, Artesia, N.M. 88210DISTRICT III
1000 Rio Brazos Rd., Aztec, N.M. 87410DISTRICT IV
1220 South St. Francis Dr., Santa Fe, NM 87506

OIL CONSERVATION DIVISION

1300 South NM 87504-12088

WELL LOCATION AND ACREAGE DEDICATION PLAT

*API Number 30-039-29717		*Pool Code 71599	RECEIVED 070 FARM BASIN Dakota
*Property Code 6886 32660 ✓	*Property Name CANYON LARGO UNIT ✓		*Well Number 487 ✓
*OGRID No. 208706 ✓	*Operator Name HUNTINGTON ENERGY, LLC ✓		*Elevation 6564' ✓

10 Surface Location

UL or lot no.	Section	Township	Range	Lot Idn	Feet from the	North/South line	Feet from the	East/West line	County
F	15	25-N	6-W		1445'	NORTH	2105'	WEST	RIO ARriba

11 Bottom Hole Location If Different From Surface

UL or lot no.	Section	Township	Range	Lot Idn	Feet from the	North/South line	Feet from the	East/West line	County
*Dedicated Acres DK - W/320			*Joint or Infill		*Consolidation Code		*Order No.		

NO ALLOWABLE WILL BE ASSIGNED TO THIS COMPLETION UNTIL ALL INTERESTS HAVE BEEN CONSOLIDATED
OR A NON-STANDARD UNIT HAS BEEN APPROVED BY THE DIVISION

FD 3 1/4" N 89-14-40 E B.L.M. BC 2626.9' (C) 1955	1445'	CALC'D CORNER FROM W.C. 40 LKS SOUTH FND. 1955 3 1/4" BLM BC
2105'		
S 00-56-45 E 2597.6' (C)		
CALC'D CORNER FROM W.C. 60 LKS SOUTH FND. 1955 3 1/4" BLM BC	15	

17 OPERATOR CERTIFICATION

I hereby certify that the information contained herein is true and complete to the best of my knowledge and belief.

Catherine Smith
Signature
Catherine Smith
Printed Name
Land Associate
Title
October 13, 2005
Date

18 SURVEYOR CERTIFICATION

I hereby certify that the well location shown on this plat was plotted from field notes of actual surveys made by me or under my supervision, and that the same is true and correct to the best of my belief.

ANNA YUKOWICH
Date
Signature
NEW MEXICO
REGISTERED PROFESSIONAL SURVEYOR
14891
20-9
Certificate Number

Standard 640-acre Section

OPERATIONS PLAN

Well Name: Canyon Largo Unit #487
Location: 1445' FNL, 2105' FWL, NW/4 Sec 15, T-25-N, R-6-W NMPM
Rio Arriba County, NM
Formation: Basin Dakota
Elevation: 6564' GL

<u>Formation Tops:</u>	<u>Top</u>	<u>Bottom</u>	<u>RMSL</u>
Ojo Alamo	1965'	2165'	4615
Kirkland	2165'	2385'	4415
Fruitland	2385'	2605'	4195
Pictured Cliffs	2605'	2635'	3975
Lewis Shale	2635'	2980'	3945
Huerfano	2980'	4175'	3600
Cliff House	4175'	4235'	2405
Menefee	4235'	4790'	2345
Point Lookout	4790'	5145'	1790
Mancos	5145'	5958'	1435
Gallup (Niobrara)	5958'	6720'	622
Greenhorn	6720'	6784'	-140
Graneros	6784'	6840'	-204
Dakota	6840'	7170'	-260
Morrison	7170'	7300'	-590
TD	7300'		

Logging Program:

Open hole logs – None
Cased hole logs – RST – TD to 5900'; CBL/GR – TD to 5800'
Cores & DST's – none
Mud log – 3200' to TD

Mud Program:

<u>Interval</u>	<u>Type</u>	<u>Weight</u>	<u>Vis.</u>	<u>Fluid Loss</u>
0 – 320'	Spud	8.4-8.9	40-50	no control
320 – 7300'	LSND	8.4-9.0	40-60	8-12

Pit levels will be visually monitored to detect gain or loss of fluid control.

Casing Program:

<u>Hole Size</u>	<u>Depth Interval</u>	<u>Csg. Size</u>	<u>Wt.</u>	<u>Grade</u>
12 1/4"	0' – 320'	8 5/8"	24.0#	WC-50
7 7/8"	0' – 7300'	4 1/2"	11.6#	N-80

Tubing Program:

0' – 7300'	2 3/8"	4.7#	J-55
------------	--------	------	------

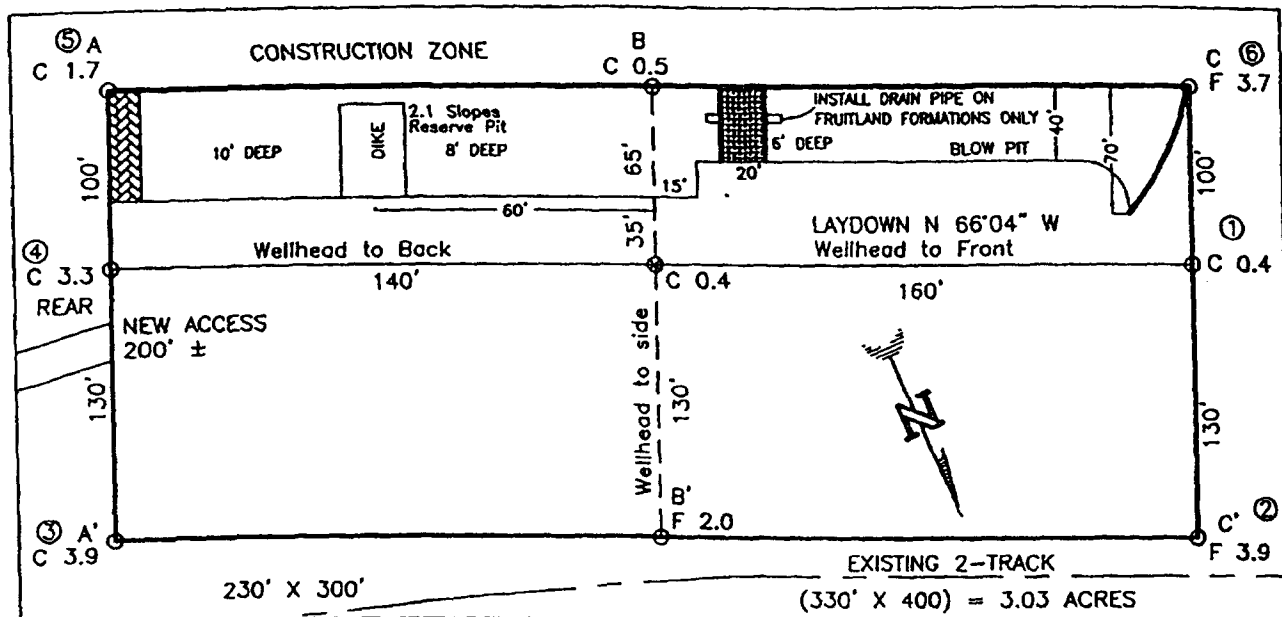
BOP Specifications, Wellhead and Tests:

Surface to TD –

11" 3000 psi minimum double gate BOP stack (Reference Figure #1). After nipple-up prior to drilling out surface casing, ~~rams~~ and casing will be tested to 600 psi for 30 minutes. BOP

2" nominal, 3000 psi minimum choke manifold (Reference Figure #3).

BURLINGTON RESOURCES OIL AND GAS COMPANY LP/HUNTINGTON ENERGY, LLC
 CANYON LARGO UNIT No. 487, 1445 FNL 2105 FWL
 SECTION 15, T-25-N, R-6-W, N.M.P.M., RIO ARriba COUNTY, NEW MEXICO
 GROUND ELEVATION: 6564, DATE: AUGUST 30, 2005



RESERVE PIT DIKE: TO BE 8' ABOVE DEEP SIDE (OVERFLOW - 3' WIDE AND 1' ABOVE SHALLOW SIDE).
 BLOW PIT: OVERFLOW PIPE HALFWAY BETWEEN TOP AND BOTTOM AND TO EXTEND OVER PLASTIC LINER AND INTO BLOW PIT.

NOTE:

DAGGETT ENTERPRISES, INC. IS NOT LIABLE FOR
 UNDERGROUND UTILITIES OR PIPELINES. NEW MEXICO
 ONE CALL TO BE NOTIFIED 48 HOURS PRIOR TO
 EXCAVATION OR CONSTRUCTION.

ELEV. A-A'	C/L			
6580				
6570				
6560				
6540				

ELEV. B-B'	C/L			
6580				
6570				
6560				
6540				

ELEV. C-C'	C/L			
6580				
6570				
6560				
6540				

NOTE: CONTRACTOR SHOULD CALL ONE-CALL FOR LOCATION OF ANY MARKED OR UNMARKED BURIED PIPELINES OR CABLES ON WELL PAD AND OR ACCESS ROAD AT LEAST TWO (2) WORKING DAYS PRIOR TO CONSTRUCTION.

Daggett Enterprises, Inc.
 Surveying and Oil Field Services
 P. O. Box 15068 • Farmington, NM 87401
 Phone (505) 326-1772 • Fax (505) 326-4019
 NEW MEXICO P.L.S. No. 14831



DATE: 08/22/05
 DRAWN BY: A.G.
 CHECKED BY: RTG045C78

Completion Operations:

6" 3000 psi double gate BOP stack (Reference Figure #2). After nipple-up prior to completion, pipe rams and casing top will be tested to 3000 psi for 15 minutes.

Surface to Total Depth:

2" nominal, 3000 psi minimum choke manifold (Reference Figure #3).

Wellhead:

8 5/8" x 4 1/2" x 1 1/2" x 1 1/2" x 3000 psi tree assembly.

General:

- Pipe rams will be actuated once each day and blind rams will be actuated once each trip to test proper functioning.
- An upper Kelly cock valve with handle available and drill string valves to fit each drill string will be available on the rig floors at all times.
- A BOP pit level drill will be conducted weekly for each drilling crew.
- All of the BOP tests and drills will be recorded in the daily drilling reports.
- Blind and pipe rams will be equipped with extension hand wheels.

Cementing:

8 5/8" surface casing –

Cement to surface w/265 sx Class "B" cement w/3% calcium chloride and 1/4#/sx cellophane flakes (312 cu. ft. of slurry, 200% excess to circulate to surface).

WOC 8 hr. prior to drilling out surface casing. Test casing to 600 psi for 30 minutes.

Saw tooth guide shoe on bottom. Bowspring centralizers will be run in accordance with Onshore Order #2.

Production Casing – 4 1/2"

Lead with 700 sx 65/35 Standard Poz w/6% gel, 1/4# Flocele, 10# Gilsonite, 3/10% Halad 9, 1/10% HR5 (1.96 yld). Tail w/900 sx 50/50 Standard Poz w/35 Gel, 9/10% Halad9, 2/10% CFR 3, 5# Gilsonite, 1/4# Flocele (1.47 yld). - Circulate to surface

Alternate Two-stage cement job as follows:

First Stage: Cement to circulate to stage tool @ 5066'. Lead with 700 sx Class "G" 50/50 poz (13#, 1.47 yd) w/3% gel, 0.25 pps Celloflake, 5 pps Gilsonite, 0.25 pps Fluid loss, 0.15% dispersant, 0.1% retarder. WOC 4 hours prior to pumping second stage. (Slurry volume: 1029 cu. ft. Excess slurry: 50%). DV Tool at 5000 ft.

Second Stage: Cement to circulate to surface. Cement with 700 sx Class "G" (12#, 2.9yd) TXI Liteweight cement w/2.5% sodium metasilicate, 2% calcium chloride, 10 pps Gilsonite, 0.5 pps Celloflake, 0.2% antifoam. WOC a minimum of 18 hours prior to cleanout. (Slurry volume: 1944 cu. ft. Excess slurry: 50%). Tail w/50 sx Class "B" w/1/4# Flocele (15.6#, 1.18 yd) (Slurry 59 cu. ft., Excess 50%).

Float shoe on bottom. Three centralizers run every other joint above shoe. Thirty-five centralizers - one every 4th joint to the base of the Ojo Alamo @ 2448'. Two turbolizing type centralizers - one below and one into the base of the Ojo Alamo @ 2448'. Standard centralizers thereafter every fourth joint up to the base of the surface pipe.

Note: If open hole logs are run, cement volumes will be based on 25% excess over caliper volumes.

Additional Information:

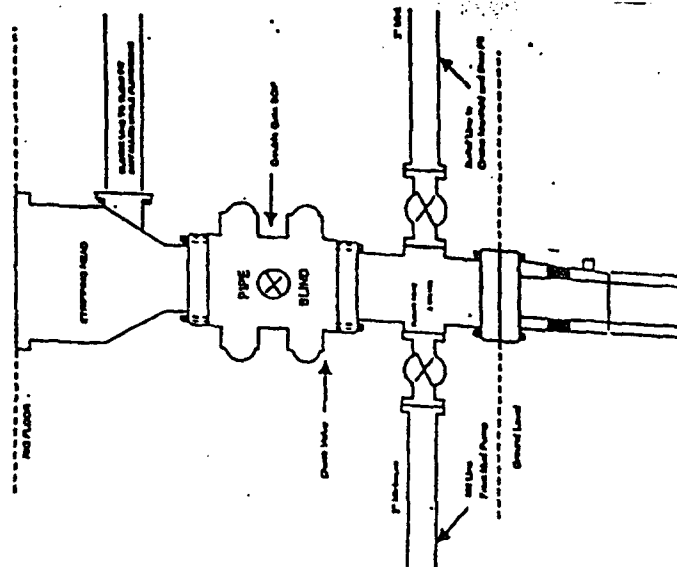
The Dakota formations will be completed.

- No abnormal temperatures or hazards are anticipated.
- Sufficient LCM will be added to the mud system to maintain well control, if lost circulation is encountered below the top of the Pictured Cliffs.
- The west half of the Section 15 is dedicated to this well.
- This gas is dedicated.
- Anticipated pore pressure

Fruitland Coal	300 psi
Pictured Cliffs	500 psi
Mesa Verde	700 psi
Dakota	3000 psi

HUNTINGTON ENERGY, L.L.C.

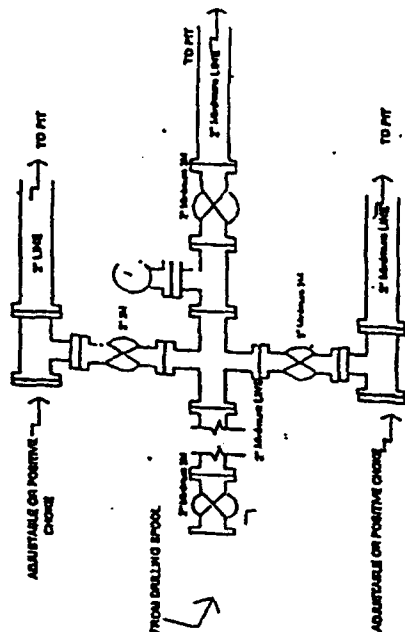
**Completion/Workover Rig
BOP Configuration
2,000 psi System**



Minimum BOP Installation for all Completion/Workover Operations. 7-1/16" bore, 2000 psi minimum working pressure double gate BOP to be equipped with blind and pipe rams. A stuffing head to be installed on the top of the BOP. All BOP equipment is 2000 psi working pressure or greater excluding 500 psi stuffing head.

Figure #2

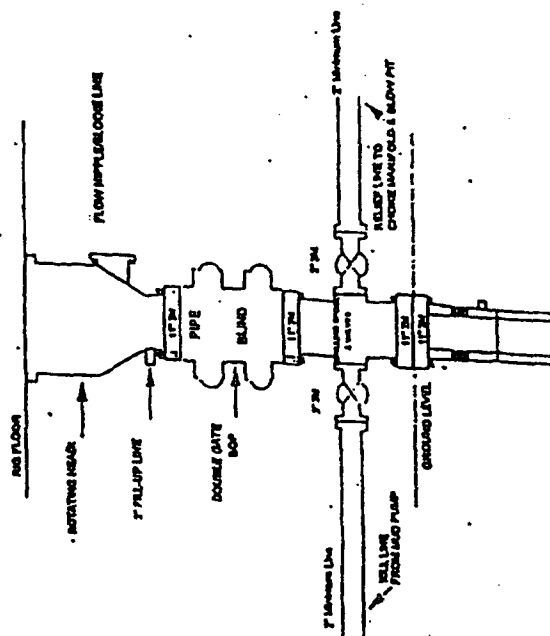
**Drilling Rig
Choke Manifold Configuration
2000 psi System**



Choke manifold installation from Surface Casing Point to Total Depth. 2,000psi working pressure equipment with two chokes.

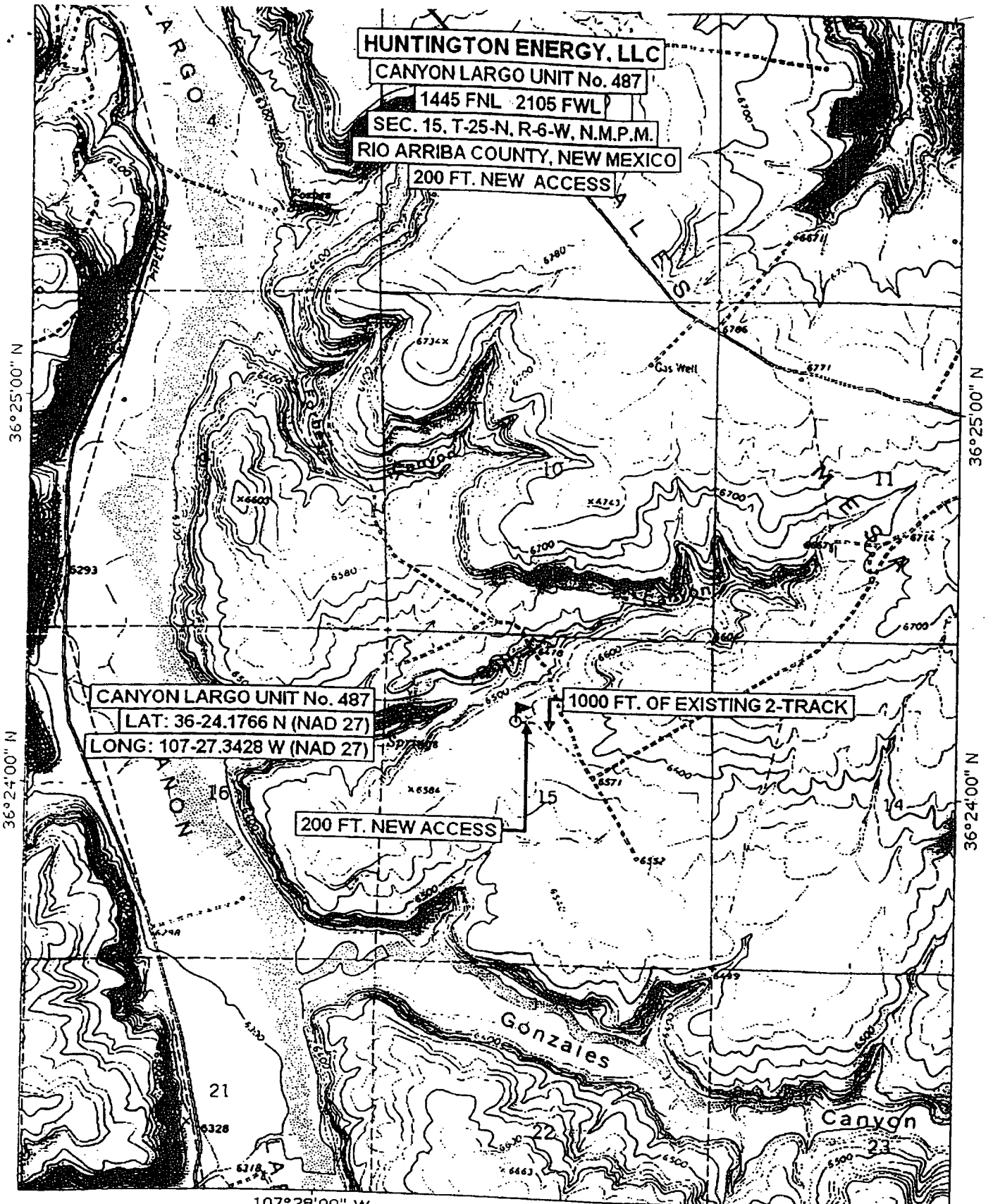
Figure #3

**Drilling Rig
2000 psi System**



BOP Installation from Surface Casing Point to Total Depth. 11" Bore 10" Nominal, 2000 psi working pressure double gate BOP to be equipped with blind rams and pipe rams. A 800 psi rotating head on top of ram preventers. All BOP equipment is 2,000 psi working pressure ram preventers. All BOP

Figure #1



TN MN 10°

107°28'00" W 107°27'00" W WGS84 107°26'00" W

0 1000 FEET 0 500 1000 METERS

Map created with TOPO!® ©2002 National Geographic (www.nationalgeographic.com/topo)

Submit 3 Copies To Appropriate District Office
District I
1625 N. French Dr., Hobbs, NM 88240
District II
1301 W. Grand Ave., Artesia, NM 88210
District III
1000 Rio Brazos Rd., Aztec, NM 87410
District IV
1220 S. St. Francis Dr., Santa Fe, NM 87505

State of New Mexico
Energy, Minerals and Natural Resources

Form C-103
May 27, 2004

OIL CONSERVATION DIVISION
1220 South St. Francis Dr.
Santa Fe, NM 87505

WELL API NO. 30-039-29717
5. Indicate Type of Lease STATE <input type="checkbox"/> FEE <input checked="" type="checkbox"/>
6. State Oil & Gas Lease No. SF 078884
7. Lease Name or Unit Agreement Name Canyon Largo Unit
8. Well Number 487
9. OGRID Number 208706
10. Pool name or Wildcat Basin Dakota

SUNDRY NOTICES AND REPORTS ON WELLS
(DO NOT USE THIS FORM FOR PROPOSALS TO DRILL OR TO DEEPEN OR PLUG BACK TO A DIFFERENT RESERVOIR. USE "APPLICATION FOR PERMIT" (FORM C-101) FOR SUCH PROPOSALS.)

1. Type of Well: Oil Well ☐ Gas Well ☒ Other

2. Name of Operator
Huntington Energy, L.L.C.

3. Address of Operator
6301 Waterford Blvd., Suite 400, Oklahoma City, OK 73118

4. Well Location
Unit Letter F: 1445 feet from the North line and 2105 feet from the West line
Section 15 Township 25N Range 6W NMPM Rio Arriba County

11. Elevation (Show whether DR, RKB, RT, GR, etc.)
6564' GL

Pit or Below-grade Tank Application ☒ or Closure ☐

Pit type Drilling Depth to Groundwater 1000' Distance from nearest fresh water well >12000' Distance from nearest surface water 600'

Pit Liner Thickness: 12 mil Below-Grade Tank: Volume N/A bbls; Construction Material

12. Check Appropriate Box to Indicate Nature of Notice, Report or Other Data

NOTICE OF INTENTION TO:

PERFORM REMEDIAL WORK ☐ PLUG AND ABANDON ☐
TEMPORARILY ABANDON ☐ CHANGE PLANS ☐
PULL OR ALTER CASING ☐ MULTIPLE COMPL ☐

OTHER: Drilling Pit ☒

SUBSEQUENT REPORT OF:

REMEDIAL WORK ☐ ALTERING CASING ☐
COMMENCE DRILLING OPNS. ☐ P AND A ☐
CASING/CEMENT JOB ☐

OTHER: ☐

13. Describe proposed or completed operations. (Clearly state all pertinent details, and give pertinent dates, including estimated date of starting any proposed work). SEE RULE 1103. For Multiple Completions: Attach wellbore diagram of proposed completion or recompletion.

Huntington Energy, L.L.C. proposes to construct a reserve pit in order to drill the subject well. Huntington Energy anticipates constructing and closing the pit according to the general pit permit requirements on file at the NMOCD office.



I hereby certify that the information above is true and complete to the best of my knowledge and belief. I further certify that any pit or below-grade tank has been/will be constructed or closed according to NMOCD guidelines ☒, a general permit ☐ or an (attached) alternative OCD-approved plan ☐.

SIGNATURE Catherine Smith TITLE Land Associate

DATE February 9, 2006

Type or print name Catherine Smith E-mail address: csmith@huntingtonenergy.com

Telephone No. (405) 840-9876

For State Use Only

APPROVED BY: Denny Fort TITLE DEPUTY OIL & GAS INSPECTOR, DIST. 9

DATE FEB 13 2006

Conditions of Approval (if any):

UNITED STATES
DEPARTMENT OF THE INTERIOR
BUREAU OF LAND MANAGEMENT

SUNDRY NOTICES AND REPORTS ON WELLS

Do not use this form for proposals to drill or to re-enter an abandoned well. Use Form 3160-3 (APD) for such proposals.

FORM APPROVED
OMB No. 1004-0137
Expires: March 31, 2007

SUBMIT IN TRIPLICATE- Other instructions on reverse side.

1. Type of Well ☐ Oil Well ☒ Gas Well ☐ Other

2. Name of Operator **Huntington Energy, L.L.C.**

3a. Address
6301 Waterford Blvd., Suite 400

3b. Phone No. (include area code)
405-840-9876

4. Location of Well (Footage, Sec., T., R., M., or Survey Description)

**SENW Lot F 1445' FNL & 2105' FWL
Sec 15, T25N-R6W NMPM**

5. Lease Serial No.

NMSF 078884

6. If Indian, Allottee or Tribe Name

7. If Unit or CA/Agreement, Name and/or No.

Canyon Largo Unit

8. Well Name and No.

Canyon Largo Unit 487

9. API Well No.

30-039-29717

10. Field and Pool, or Exploratory Area

Basin Dakota

11. County or Parish, State

Rio Arriba County, NM

12. CHECK APPROPRIATE BOX(ES) TO INDICATE NATURE OF NOTICE, REPORT, OR OTHER DATA

TYPE OF SUBMISSION	TYPE OF ACTION				
<input type="checkbox"/> Notice of Intent	<input type="checkbox"/> Acidize	<input type="checkbox"/> Deepen	<input type="checkbox"/> Production (Start/Resume)	<input type="checkbox"/> Water Shut-Off	
<input checked="" type="checkbox"/> Subsequent Report	<input type="checkbox"/> Alter Casing	<input type="checkbox"/> Fracture Treat	<input type="checkbox"/> Reclamation	<input type="checkbox"/> Well Integrity	
<input type="checkbox"/> Final Abandonment Notice	<input type="checkbox"/> Casing Repair	<input type="checkbox"/> New Construction	<input type="checkbox"/> Recomplete	<input checked="" type="checkbox"/> Other Notice of Spud	
	<input type="checkbox"/> Change Plans	<input type="checkbox"/> Plug and Abandon	<input type="checkbox"/> Temporarily Abandon		
	<input type="checkbox"/> Convert to Injection	<input type="checkbox"/> Plug Back	<input type="checkbox"/> Water Disposal		

13. Describe Proposed or Completed Operation (clearly state all pertinent details, including estimated starting date of any proposed work and approximate duration thereof. If the proposal is to deepen directionally or recompleat horizontally, give subsurface locations and measured and true vertical depths of all pertinent markers and zones. Attach the Bond under which the work will be performed or provide the Bond No. on file with BLM/BIA. Required subsequent reports must be filed within 30 days following completion of the involved operations. If the operation results in a multiple completion or recompleat in a new interval, a Form 3160-4 must be filed once testing has been completed. Final Abandonment Notices must be filed only after all requirements, including reclamation, have been completed, and the operator has determined that the site is ready for final inspection.)

Notice of Spud for the above referenced well, 3/14/06:

12 1/4" hole, 8 5/8" 24# ST&C casing; Casing set at 337' KB.
Cementing detail: 260 sx (55 bbls) 2% CC, 1/4# flocele..

Pressure test csg 600 psi. Pressure test BOP, choke valves, kill valves 300 low, 3000 high.

- Please report whether cement was circulated to surface or not

14. I hereby certify that the foregoing is true and correct
Name (Printed/Typed)

Catherine Smith, Land Associate

Signature

Catherine Smith

Title (Land Associate)

Date

03/20/2006

THIS SPACE FOR FEDERAL OR STATE OFFICE USE

Approved by

Conditions of approval, if any, are attached. Approval of this notice does not warrant or certify that the applicant holds legal or equitable title to those rights in the subject lease which would entitle the applicant to conduct operations thereon.

Title

Date

Office

APR 06 2006

Title 18 U.S.C. Section 1001 and Title 43 U.S.C. Section 1212, make it a crime for any person knowingly and willfully to make to any department or agency of the United States any false, fictitious or fraudulent statements or representations as to any matter within its jurisdiction.

(Instructions on page 2)

NRACCD

UNITED STATES
DEPARTMENT OF THE INTERIOR
BUREAU OF LAND MANAGEMENT

SUNDRY NOTICES AND REPORTS ON WELLS

Do not use this form for proposals to drill or to re-enter an abandoned well. Use Form 3160-3 (APD) for such proposals.

SUBMIT IN TRIPLICATE- Other instructions on reverse side.

1. Type of Well <input type="checkbox"/> Oil Well <input checked="" type="checkbox"/> Gas Well <input type="checkbox"/> Other	5. Lease Serial No. NMSF 078884
2. Name of Operator Huntington Energy, L.L.C.	6. If Indian, Allottee or Tribe Name 5/1
3a. Address 6301 Waterford Blvd., Suite 400	7. If Unit or C/A Agreement, Name and/or No. Canyon Largo Unit RECEIVED
3b. Phone No. (include area code) 405-840-9876	8. Well Name and No. Canyon Largo Unit 487
4. Location of Well (Footage, Sec., T., R., M., or Survey Description) SENW Lot F 1445' FNL & 2105' FWL Sec 15, T25N-R6W NMPM	9. API Well No. 30-039-29717
	10. Field and Pool, or Exploratory Area Basin Dakota
	11. County or Parish, State Rio Arriba County, NM

12. CHECK APPROPRIATE BOX(ES) TO INDICATE NATURE OF NOTICE, REPORT, OR OTHER DATA

TYPE OF SUBMISSION	TYPE OF ACTION			
<input type="checkbox"/> Notice of Intent	<input type="checkbox"/> Acidize	<input type="checkbox"/> Deepen	<input type="checkbox"/> Production (Start/Resume)	<input type="checkbox"/> Water Shut-Off
<input checked="" type="checkbox"/> Subsequent Report	<input type="checkbox"/> Alter Casing	<input type="checkbox"/> Fracture Treat	<input type="checkbox"/> Reclamation	<input type="checkbox"/> Well Integrity
<input type="checkbox"/> Final Abandonment Notice	<input type="checkbox"/> Casing Repair	<input type="checkbox"/> New Construction	<input type="checkbox"/> Recomplete	<input checked="" type="checkbox"/> Other Production Casing
	<input type="checkbox"/> Change Plans	<input type="checkbox"/> Plug and Abandon	<input type="checkbox"/> Temporarily Abandon	
	<input type="checkbox"/> Convert to Injection	<input type="checkbox"/> Plug Back	<input type="checkbox"/> Water Disposal	

13. Describe Proposed or Completed Operation (clearly state all pertinent details, including estimated starting date of any proposed work and approximate duration thereof. If the proposal is to deepen directionally or recomplete horizontally, give subsurface locations and measured and true vertical depths of all pertinent markers and zones. Attach the Bond under which the work will be performed or provide the Bond No. on file with BLM/BLA. Required subsequent reports must be filed within 30 days following completion of the involved operations. If the operation results in a multiple completion or recompletion in a new interval, a Form 3160-4 must be filed once testing has been completed. Final Abandonment Notices must be filed only after all requirements, including reclamation, have been completed, and the operator has determined that the site is ready for final inspection.)

Production Casing Detail: 3/23/06

7 7/8" hole, 4 1/2" 11.6# N-80 casing; Casing landed at 7281' KB.

Cementing Detail: Lead w/900 sx (314 bbls) 65/35 poz 1/4# Flocele (1.96 yld); Tail w/900 sx (236 bbls) 50/50 poz w/1/4# Flocele (1.47 yld). 144 bbls cement to surface.

4/6/06: Pressure test 6000 psi. OK.

14. I hereby certify that the foregoing is true and correct
Name (Printed/Typed)

Catherine Smith

Title Land Associate

Signature

Catherine Smith

Date

04/26/2006

THIS SPACE FOR FEDERAL OR STATE OFFICE USE

Approved by

Conditions of approval, if any, are attached. Approval of this notice does not warrant or certify that the applicant holds legal or equitable title to those rights in the subject lease which would entitle the applicant to conduct operations thereon.

Title

Date

Office

Title 18 U.S.C. Section 1001 and Title 43 U.S.C. Section 1212, make it a crime for any person knowingly and willfully to make to any department or agency of the United States any false, fictitious or fraudulent statements or representations as to any matter within its jurisdiction.

(Instructions on page 2)

FORM APPROVED
OMB No. 1004-0137
Expires: March 31, 2007

5. Lease Serial No.

NMSF 078884

6. If Indian, Allottee or Tribe Name

5/1

7. If Unit or C/A Agreement, Name and/or No.

Canyon Largo Unit

8. Well Name and No.

Canyon Largo Unit 487

9. API Well No.

30-039-29717

10. Field and Pool, or Exploratory Area

Basin Dakota

11. County or Parish, State

Rio Arriba County, NM



NMOCD

MAY 03 2006

FARMINGTON FIELD OFFICE
BY *[Signature]*



PATTERSON-UTI DRILLING COMPANY

A LIMITED PARTNERSHIP

328 County Road 3500, Aztec, New Mexico 87410-9567
505-334-8361 • Fax: 505-834-8391

July 14, 2006

Rig#741
Huntington Oil & Gas
6301 Waterford Blvd.
Suite 400
Oklahoma City, Ok. 73118

30-039-29717

This is to certify that Patterson UTI Drilling, did run deviation surveys at the listed depth on your Canyon Largo Unit 487 in Sec. 15T25NR06W.

Depth	Deviation	Depth	Deviation	Depth	Deviation	Depth	Dev.
105'	1 1/2°	2314'	3/4°	4813'	2°	7224'	1°
280'	2°	3313'	1 1/4°	5285'	2°		
808'	1 1/2°	3814'	1°	5972'	2°		
1308'	1°	4313'	3°	6472'	3°		
1813'	2°	4563'	1 1/4°	7037'	1 1/4°		

To the best of my knowledge, I swear this information to be true.

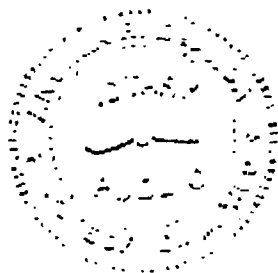
Sincerely,

Gary Miller
Area Manager

State of New Mexico County San Juan

This instrument was acknowledged before me

by



Notary public My commission expires 5/1/09

dy