

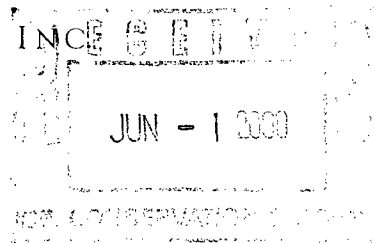
DHC 6/20/00



CLAYTON WILLIAMS ENERGY, INC.

May 31, 2000

Via Federal Express Overnight Service



2751

State of New Mexico  
Energy, Minerals and Natural Resources Department  
OIL CONSERVATION DIVISION  
2040 South Pacheco  
Santa Fe, New Mexico 87505

Attention: Mr. David Catanach

Re: **Application for Downhole Commingling Form C-107A**  
Clayton Williams Energy, Inc.  
State 20B Lease, Well Nos. 1 and 2  
Section 20, T-17S, R29E  
Eddy County, New Mexico

Dear David:

Please find attached our Forms C-107A for the above captioned wells.

Clayton Williams Energy, Inc. and Mark Heinen, an employee of CWEI, are the only working interest owners and the State of New Mexico is the only royalty owner.

Since our wells are new wells with little history, I have included as attachments two wells in Section 21 producing from the GB-Jackson, one well in Section 20 producing from the Empire, East (Yeso) and one well in Section 29 producing from the Empire, East (Yeso) as analogies. The plots are from monthly production as reported to the OCD.

Please contact me at (915) 688-3251 should you need to discuss or have any questions.

Sincerely yours,

Matt Swierc  
Production Superintendent

Enclosures



## DISTRICT II

P.O. Drawer DD, Artesia, NM 88211-0719

## DISTRICT III

1000 Rio Brazos Rd., Aztec, NM 87410

## DISTRICT IV

P.O. BOX 2088, SANTA FE, N.M. 87504-2088

## OIL CONSERVATION DIVISION

P.O. Box 2088

Santa Fe, New Mexico 87504-2088

☐ AMENDED REPORT

## WELL LOCATION AND ACREAGE DEDICATION PLAT

API Number 30-015-30918	Pool Code 28509	Pool Name Grayburg Jackson-7R's, Qn, GB, SA
Property Code 25235	Property Name STATE 20B	Well Number 1
OGRID No. 25706	Operator Name CLAYTON WILLIAMS ENERGY, INC.	Elevation 3606

## Surface Location

UL or lot No.	Section	Township	Range	Lot Idn	Feet from the	North/South line	Feet from the	East/West line	County
A	20	17 S	29 E	.	990	NORTH	330	EAST	EDDY

## Bottom Hole Location If Different From Surface

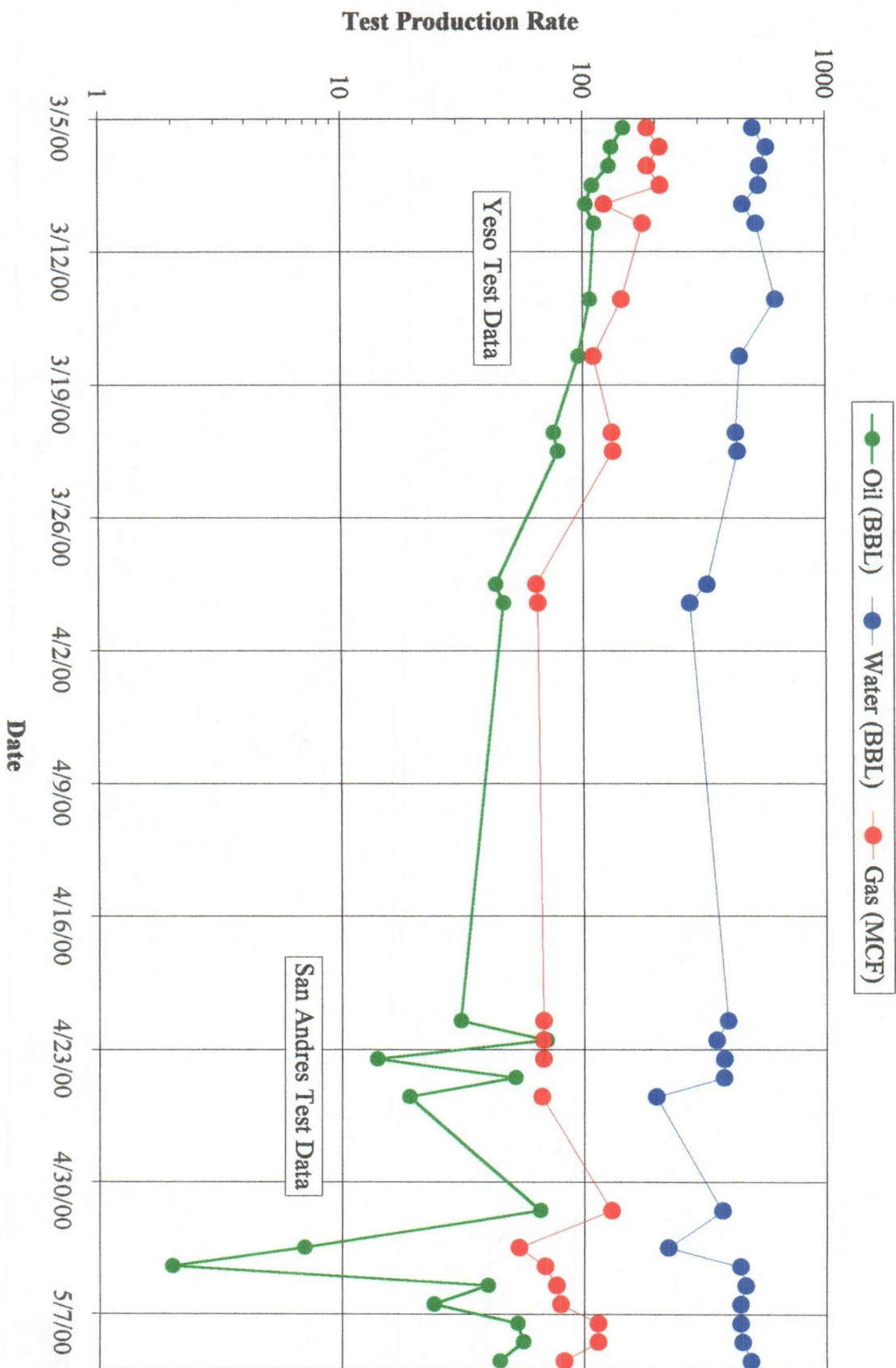
UL or lot No.	Section	Township	Range	Lot Idn	Feet from the	North/South line	Feet from the	East/West line	County

Dedicated Acres 40	Joint or Infill	Consolidation Code	Order No.
-----------------------	-----------------	--------------------	-----------

NO ALLOWABLE WILL BE ASSIGNED TO THIS COMPLETION UNTIL ALL INTERESTS HAVE BEEN CONSOLIDATED  
OR A NON-STANDARD UNIT HAS BEEN APPROVED BY THE DIVISION

	<b>OPERATOR CERTIFICATION</b> I hereby certify that the information contained herein is true and complete to the best of my knowledge and belief. <u>Betsy Luna</u> Signature Betsy Luna Printed Name Engineering Technician Title 04-10-2000 Date	
	<b>SURVEYOR CERTIFICATION</b> I hereby certify that the well location shown on this plat was plotted from field notes of actual surveys made by me or under my supervision, and that the same is true and correct to the best of my belief. JANUARY 5, 2000 Date Surveyed Signature & Seal of Professional Surveyor <u>Ronald J. Eidson</u> 01/07/00 00-11-0005	
	Certificate No. RONALD J. EIDSON 3239 GARY EIDSON 12541 MACON McDONALD 12185	

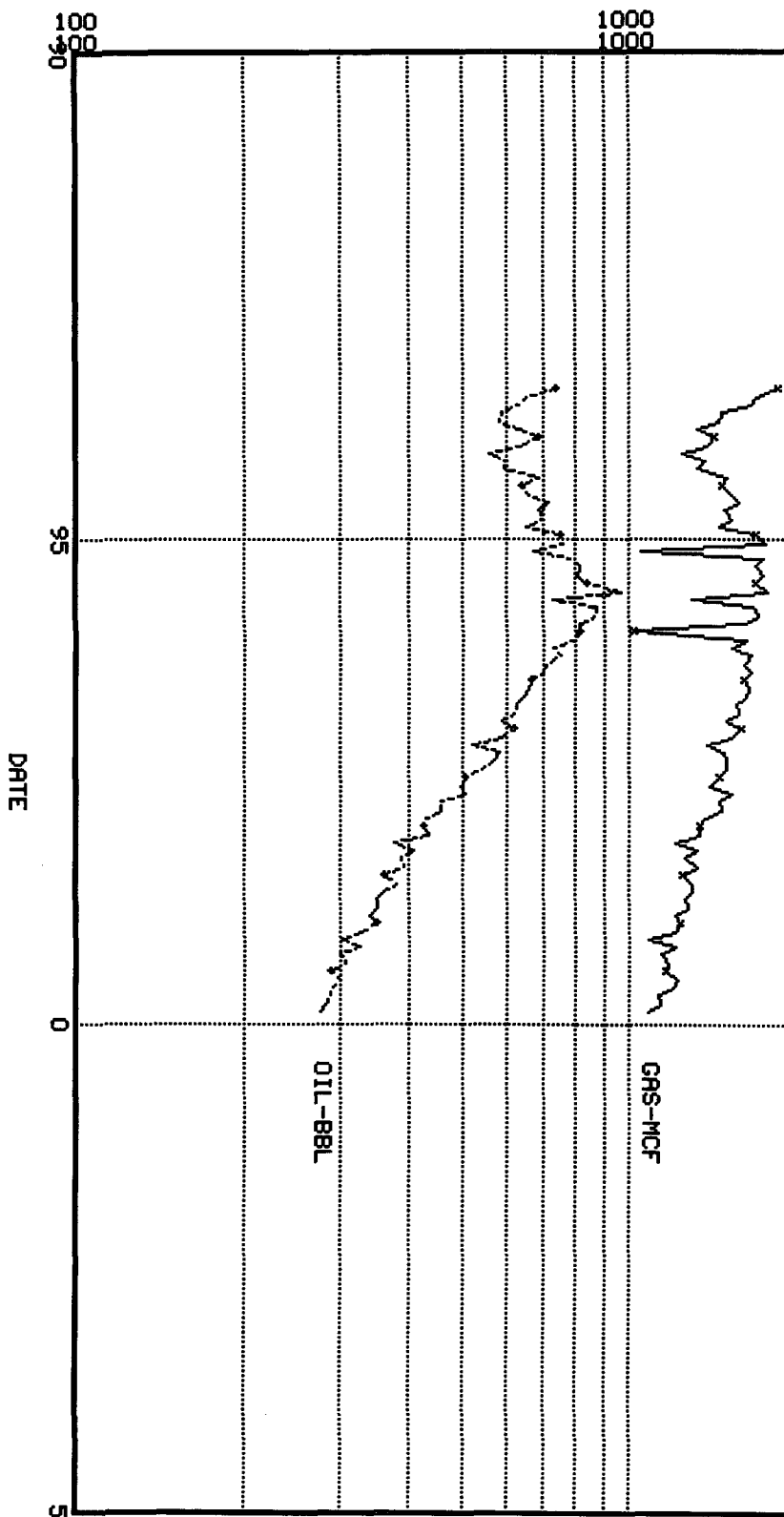
# State 20B #1 Test Production Data.



GRS-MCF  
OIL-BBL

LEASE : G J WEST COOP UNIT

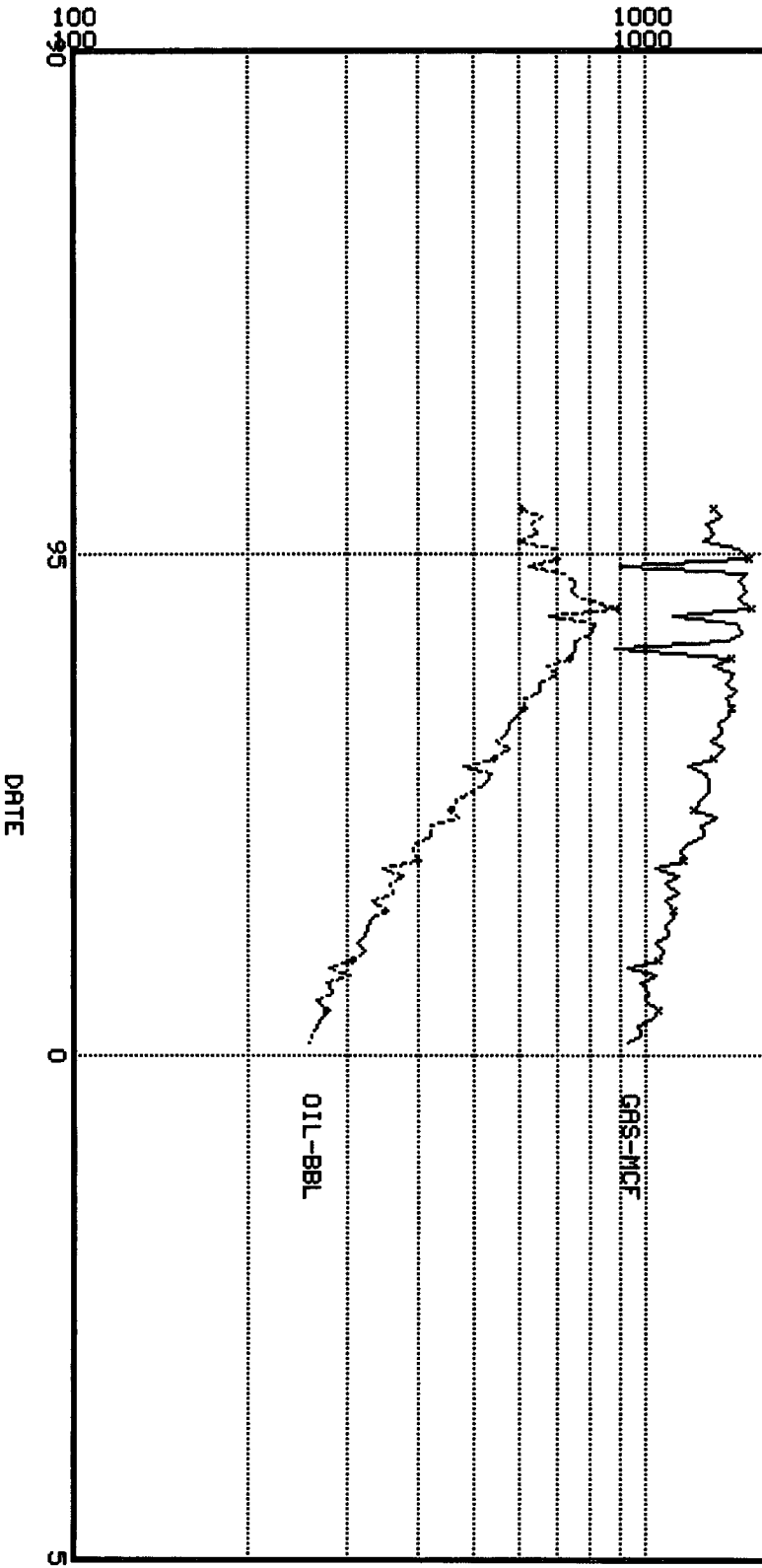
FIELD : GRAYBURG JACKSON (SVN RVR QN CB SR)QS  
COUNTY: EDDY , STATE : NM  
LOCATION: 21E 17S 29E API : 2735900



GRS-MCF  
OIL-BBL

LEASE : G J WEST COOP UNIT

FIELD : GRAYBURG JACKSON (SYN RVR QN CB SA)QS  
COUNTY: EDDY , STATE : NM  
LOCATION: 21L 17S 29E API : 2737700



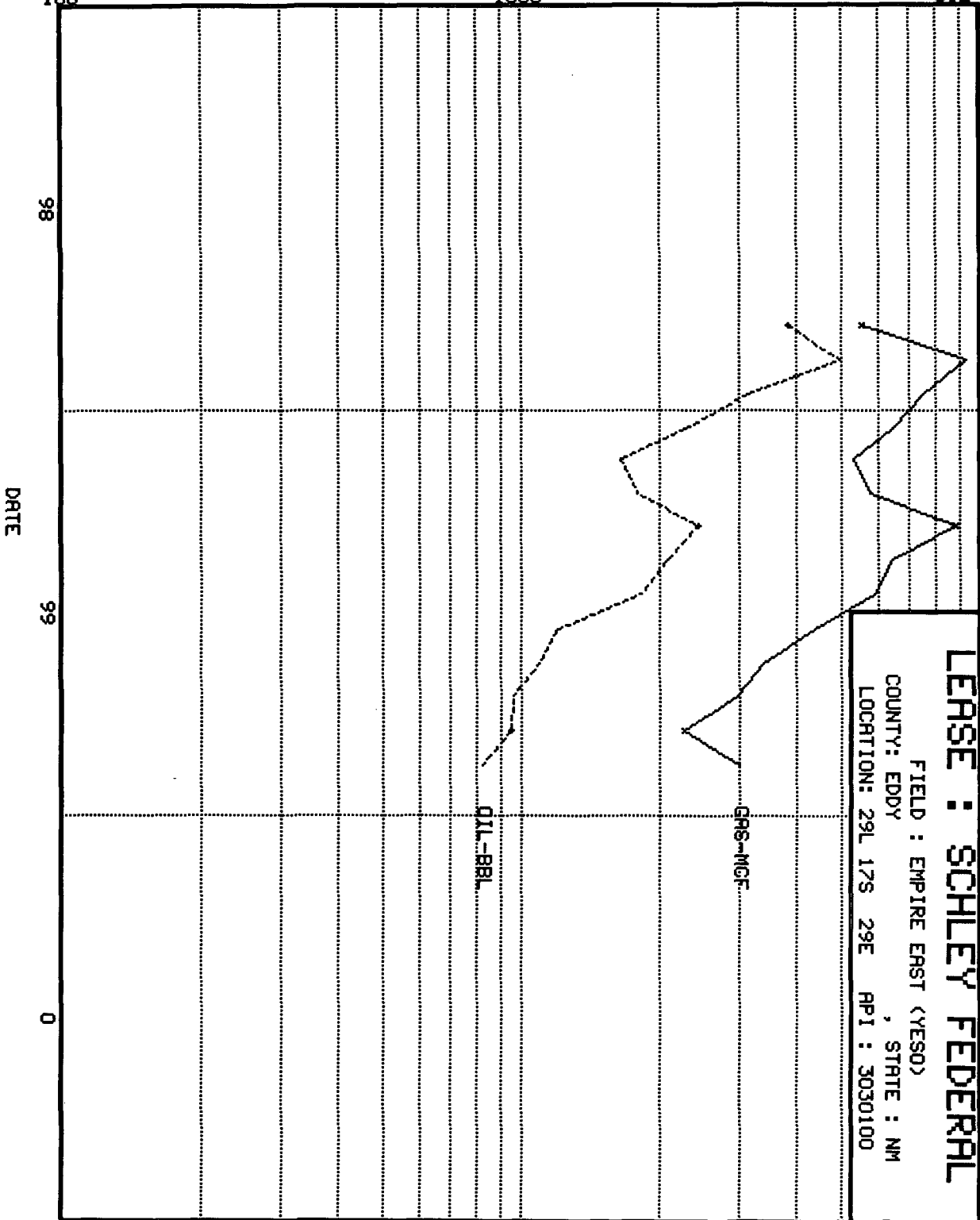
GRS-MCF  
OIL-BBL

1000  
1000

100  
100

LEASE : SCHLEY FEDERAL

FIELD : EMPIRE EAST (YESO)  
COUNTY: EDDY , STATE : NM  
LOCATION: 29L 17S 29E API : 3030100



GAS-MCF  
OIL-BBL

1000  
1000

100  
100

99

0

1

DATE

# LEASE : TENNECO STATE

FIELD : EMPIRE EAST (YESO)  
COUNTY: EDDY , STATE : NM  
LOCATION: 20M 17S 29E API : 3060300

GAS-MCF  
OIL-BBL

