

# BURLINGTON RESOURCES

OIL CONSERVATION DIV.  
02 JUL -3 AM 9:02

June 28, 2002

New Mexico Oil Conservation Division  
1000 Rio Brazos Road  
Aztec, New Mexico 87410

Re: Jicarilla 101 #2  
M Section 12, T-26-N, R-4-W  
30-039-20291

Gentlemen:

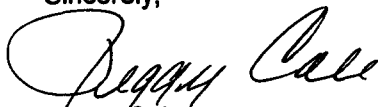
Attached is a copy of the allocation for the recompletion of the subject well that was completed 10-10-01. DHC-2876 was issued for this well.

Gas:	Mesaverde	92%
	Gallup	3%
	Dakota	5%
Oil:	Mesaverde	0%
	Gallup	10%
	Dakota	90%

These percentages were calculated using rate-time reserve estimate comparisons for each respective formation. Because the condensate production did not increase with the addition of the Mesaverde formation, the oil has been allocated as it was previous to the recompletion.

Please let me know if you have any questions.

Sincerely,



Peggy Cole  
Regulatory Supervisor

Xc: NMOCD – Santa Fe  
Bureau of Land Management

## Production Allocation Documentation

### Jicarilla 101 #2

#### Production Allocation

Based on Remaining Reserves

Mesaverde Recomplete November 2001

#### GAS

	<u>RR</u>	<u>Allocation %</u>
Gallup	28.5	3%
Dakota	50.1	5%
All	<u>1,032.9</u>	
Mesaverde	954.3	92%

#### Condensate

Because an increase was not seen in condensate with the addition of the Mesaverde formation, condensate remains allocated as it was previous to the workover.

---

# JICARILLA 101 2 3600201 (251019931466.593) Data: Jan. 1970-May. 2002

Operator: BURLINGTON RESOURCES OG CO LP

Field: BASIN DAKOTA (PRORATED GAS)

Zone:

Type: Gas

Group: Well: 28\_5LW

AllocDK (Rate-Time)

qi: 1.55231 MMSCF, Dec, 1983

qf: 0.45732 MMSCF, Dec, 2004

di(Hyp): 9

RR: 50.1294 MMSCF

Production Cums

Oil: 0 MSTB

Gas: 700.666 MMSCF

Water: 0.23259 MSTB

Cond: 17.2725 MSTB

Monthly Gas1 - MMSCF

AllocDK - MMSCF

versus time

Qi: 1.55231 MMSCF, Dec, 1983

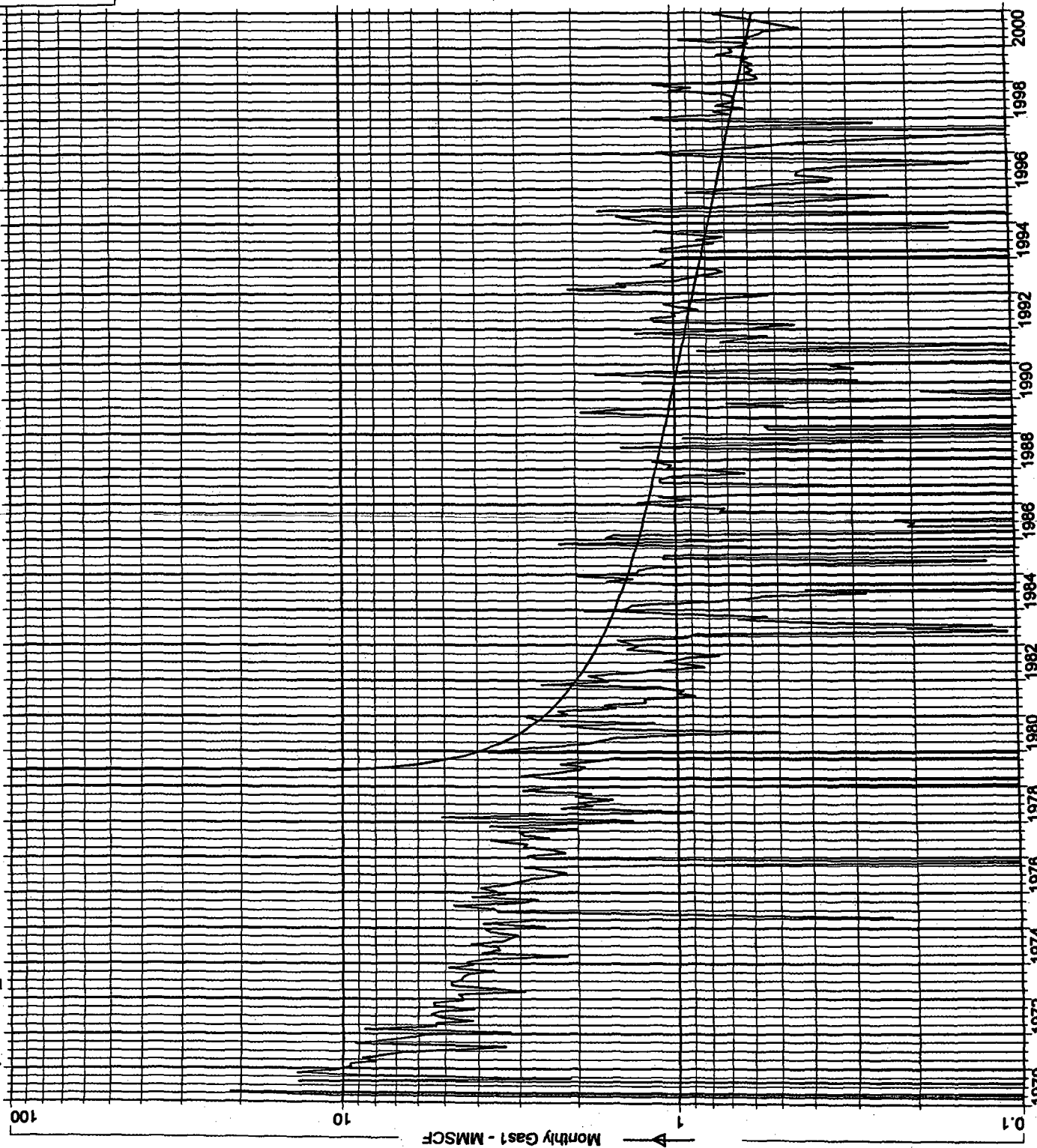
Qf: 0.45732 MMSCF, Dec, 2004

Di(Hyp->Exp): 9

n: 2.1

RR: 50.1294 MMSCF

Corr coeff: -0.616326



# JICARILLA 101 2 3600202 (JICARILLA 101 2 3600202) Data: Jan. 1970-May. 2002

Operator: BURLINGTON RESOURCES OG CO LP  
Field: WILD HORSE GALLUP (GAS)

AllocGP (Rate-Time)  
qi: 0.60875 MMSCF, Jan, 1983  
qf: 0.304507 MMSCF, Aug, 2007  
di(Hyp): 7.71165  
RR: 28.5102 MMSCF

Type: Gas  
Group: Well: 28\_5LW

Production Cums  
Oil: 0 MSTB  
Gas: 290.194 MMSCF  
Water: 0.08551 MSTB  
Cond: 1.29895 MSTB

Monthly Gas1 - MMSCF

AllocGP - MMSCF

versus time

Qi: 0.60875 MMSCF, Jan, 1983

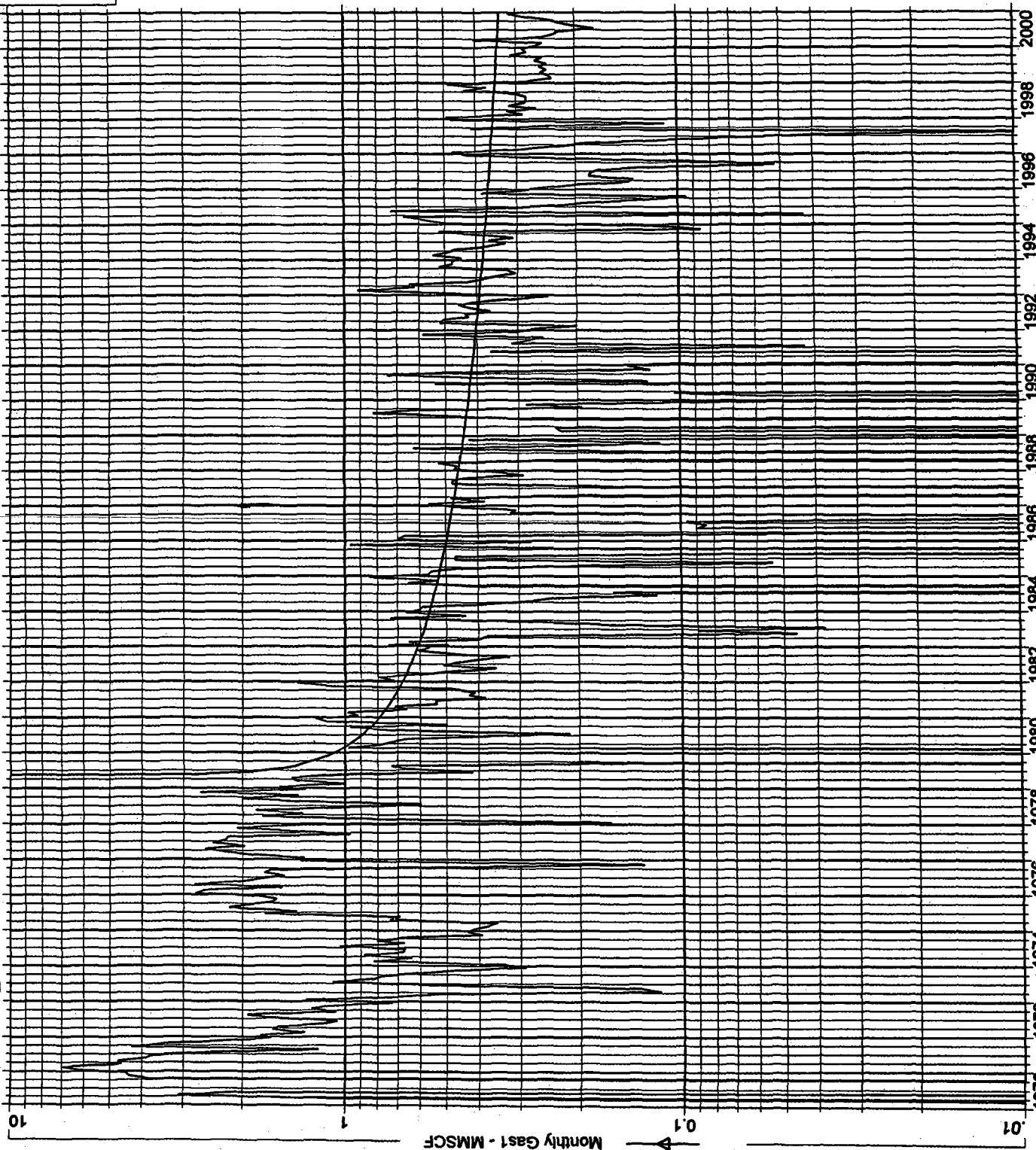
Qf: 0.304507 MMSCF, Aug, 2007

Di: (Hyp->Exp) : 7.71165

n: 3

RR: 28.5102 MMSCF

Corr coeff: -0.517792



# JICARILLA 101 2 3600203 (JICARILLA 101 2 MV) Data: Oct.2001-May.2002

Operator: BURLINGTON RESOURCES OG CO LP  
 Field: JICARILLA 101 2 3600203  
 Zone: JICARILLA 101 2 MV  
 Type: Gas  
 Group: Well: 28\_5LW

AllocALL (Rate-Time)  
 qi: 10.0444 MMSCF, Oct, 2001  
 qf: 0.457416 MMSCF, Jan, 2046  
 di(Hyp): 35  
 RR: 1032.91 MMSCF

Production Cums  
 Oil: 0 MSTB  
 Gas: 62.81 MMSCF  
 Water: 0 MSTB  
 Cond: 0.12532 MSTB

Monthly Gas1 - MMSCF

AllocALL - MMSCF  
 versus time  
 Qi: 10.0444 MMSCF, Oct, 2001  
 Qf: 0.457416 MMSCF, Jan, 2046  
 Di(Hyp->Exp) : 35  
 n: 2.7  
 RR: 1032.91 MMSCF  
 Corr coeff: -0.163565

