

Yates Petroleum Corporation

Amanda AMN Federal #1

Amended Work Plan

Section 11, T23S- R32E

September 22, 2006

I. Location

The well is located approximately 45 miles south-southwest of Carlsbad, NM northeast of County Road 128, as represented by the attached Bootleg Ridge, NM, USGS Quadrangle Map.

II. Background

On May 4, 2006, Yates submitted to the NMOCD District I office a C-141 report reflecting a release of 180 barrels of produced water and 4 barrels of oil from a cold weld on a water line. No fluids were recovered. The affected area is approximately 250 feet by 1000 feet. The water line has been repaired.

III. Surface and Ground Water

Area surface geology is Cenozoic. The nearest groundwater of record listed on the ChevronTexaco, Lea County Depth to Groundwater Water Well Facilities Trend Map dated 2/9/2005 shows depth to groundwater approximately 525 feet making the site ranking a zero (0). Watercourses in the area are dry.

The ranking for this site is zero (0) based on the as following:

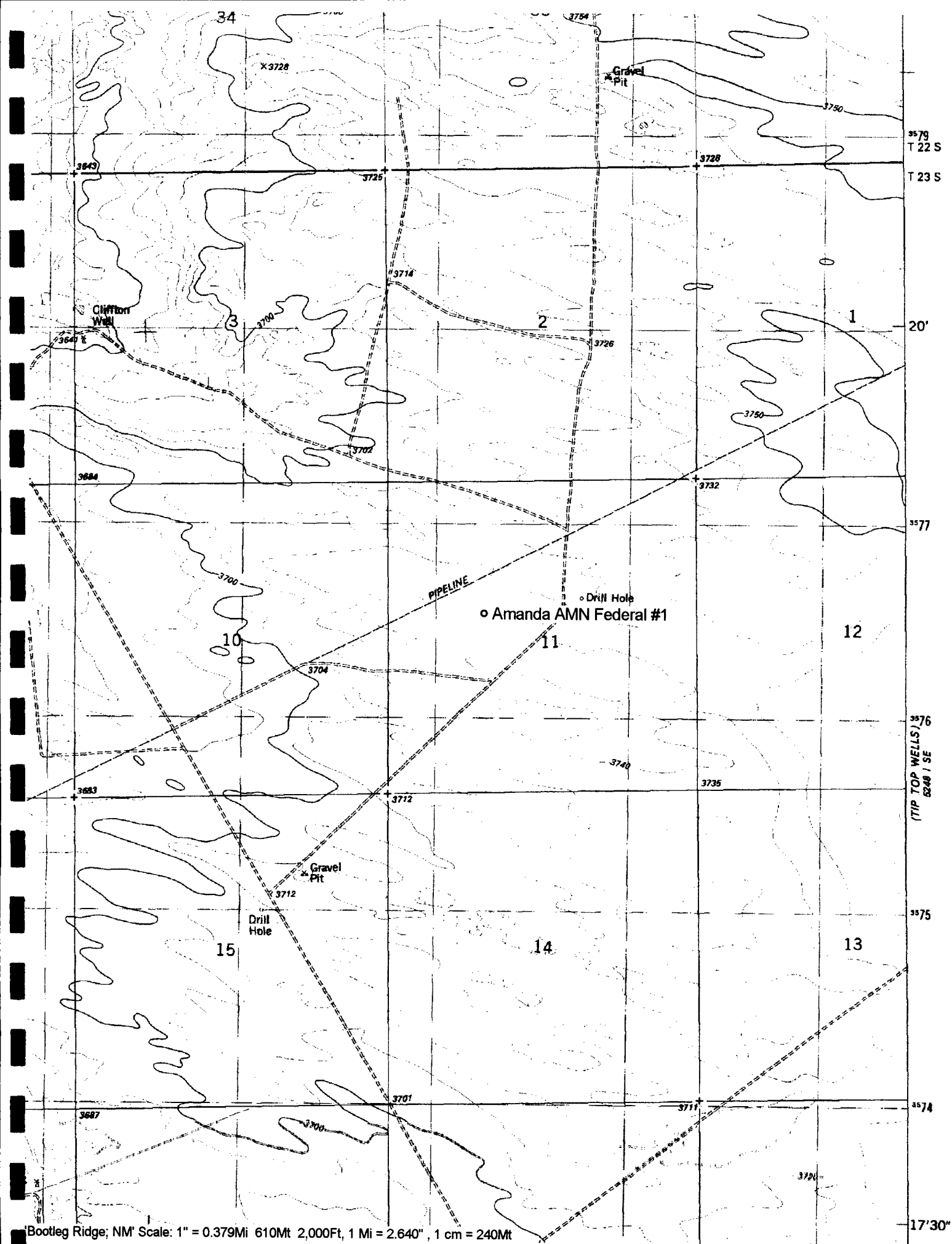
Depth to ground water	> 100'
Wellhead Protection Area	> 1000'
Distance to surface water body	> 1000'

IV. Soils

The area consists of sand, interspersed with caliche and clay seams providing a low permeability barrier to retard vertical percolation of contaminants into the subsurface.

V. Scope of Work

Yates Petroleum Corporation will reevaluated the release area in six (6) months (on or around March 21, 2007) to determine if any further remediation is needed. Yates will take soil samples within the effected area for delineation and water samples at the injection well. These samples will be sent to a certified lab and analyzed for BTEX and TPH; Chlorides will be analyzed for reference purposes only. Yates will contact the Oil Conservation Division to give opportunity to witness a final sampling event; if lab analysis reflects closure levels (RRAL's for BTEX is 50 ppm and TPH is 5000 ppm) then Yates will submit a C-141 for final closure.



Bootleg Ridge, NM Scale: 1" = 0.379Mi 610Mt 2,000Ft, 1 Mi = 2.640", 1 cm = 240Mt



09/07/2006 11:29am



09/07/2006 11:29am