

MERIDIAN OIL

OIL CONSERVATION DIVISION  
RECEIVED

'90 FEB 2 AM 9 09

January 15, 1990

Certified Mail

Mr. William LeMay  
New Mexico Oil Conservation Division  
Post Office Box 2088  
Santa Fe, New Mexico 87503

Dear Mr. LeMay:

This is a request for administrative approval for an unorthodox gas well location in the Basin Fruitland Pool.

It is intended to locate the Meridian Oil Inc.'s Klein A #1 at 620' from the North line and 1400' from the East line of Section 31, T-26-N, R-6-W, Rio Arriba County, New Mexico. This well was originally drilled as a Pictured Cliffs and is intended to be plugged back to the Fruitland Coal Pool.

A copy of this application is being submitted to all offset owners/operators by certified mail with a request that they furnish your Santa Fe office with a Waiver of Objection, and return one copy to this office.

A copy of the plat showing the location of this well, along with an offset operators/owners plat is attached.

Sincerely yours,



Peggy Bradfield

encl.

WAIVER

Union Oil Co. of Calif. hereby waives objection to Meridian Oil Inc.'s application for an unorthodox location for their Klein A #1 as proposed above.

By: William Hering Date: 2-1-90

xc: Wiser Oil Company  
Union Oil of California

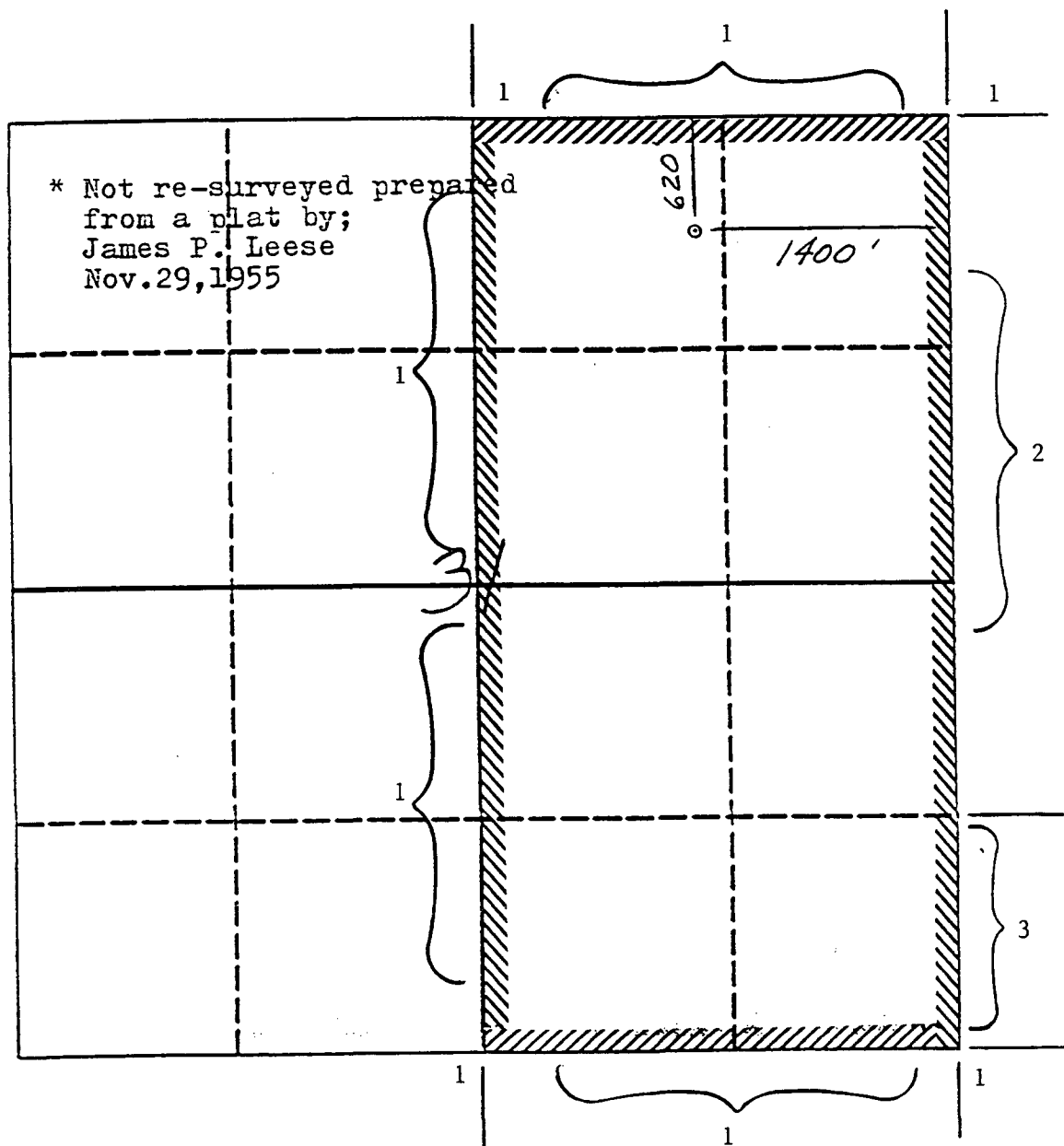
MERIDIAN OIL INC

Well Name Klein A #1

Footage 620' FNL; 1400' FEL

APPLICATION FOR NON-STANDARD LOCATION

County Rio Arriba State New Mexico Section 31 Township 26N Range 6W



Remarks 1) Meridian Oil Inc.

2) The Wiser Oil Company

3) Union Oil Company of California

Submit to Appropriate  
District Office  
State Leases - 4 copies  
Fee Leases - 3 copies

State of New Mexico  
Energy, Minerals and Natural Resources Department

Form C-102  
Revised 1-1-89

OIL CONSERVATION DIVISION

P.O. Box 2088

Santa Fe, New Mexico 87504-2088

DISTRICT I

P.O. Box 1980, Hobbs, NM 88240

DISTRICT II

P.O. Drawer DD, Artesia, NM 88210

DISTRICT III

1000 Rio Brazos Rd., Aztec, NM 87410

WELL LOCATION AND ACREAGE DEDICATION PLAT

All Distances must be from the outer boundaries of the section

Operator Meridian Oil Inc.			Lease Klein "A"		Well No. 1
Unit Letter B	Section 31	Township 26 North	Range 6 West	County Rio Arriba	NMPM
Actual Footage Location of Well: 620 feet from the North line and 1400 feet from the East line					
Ground level Elev. 6196'	Producing Formation Fruitland Coal		Pool Basin	Dedicated Acreage: 320 Acres	

1. Outline the acreage dedicated to the subject well by colored pencil or machine marks on the plat below.

2. If more than one lease is dedicated to the well, outline each and identify the ownership thereof (both as to working interest and royalty).

3. If more than one lease of different ownership is dedicated to the well, have the interest of all owners been consolidated by communitization, unitization, force-pooling, etc.?

☐ Yes

☐ No

If answer is "yes" type of consolidation

If answer is "no" list the owners and tract descriptions which have actually been consolidated. (Use reverse side of this form if necessary).

No allowable will be assigned to the well until all interests have been consolidated (by communitization, unitization, forced-pooling, or otherwise) or until a non-standard unit, eliminating such interest, has been approved by the Division.

\* Not re-surveyed prepared from a plat by;  
James P. Leese  
Nov. 29, 1955

620

1400'

31

OPERATOR CERTIFICATION

I hereby certify that the information contained herein is true and complete to the best of my knowledge and belief.

Signature

Printed Name

Peggy A. Bradfield

Position

Regulatory Affairs

Company

Meridian Oil Inc.

Date

SURVEYOR CERTIFICATION

I hereby certify that the well location shown on this plat was plotted from field notes of actual surveys made by me or under my supervision, and that the same is true and correct to the best of my knowledge and belief.

Date Surveyed

NEALE C. EDWARDS

Signature of Seal of Professional Surveyor

Certificate No.

6857



STATE OF NEW MEXICO  
ENERGY AND MINERALS DEPARTMENT  
OIL CONSERVATION DIVISION  
AZTEC DISTRICT OFFICE

GARREY CARRUTHERS  
GOVERNOR

'90 JAN 23 AM 8 48

1000 RIO HAZOS ROAD  
AZTEC, NEW MEXICO 87410  
(505) 334-0178

Date: 1-19-90

Oil Conservation Division  
P.O. Box 2088  
Santa Fe, NM 87504-2088

Re: Proposed MC \_\_\_\_\_  
Proposed DHC \_\_\_\_\_  
Proposed NSL X \_\_\_\_\_  
Proposed SWD \_\_\_\_\_  
Proposed WFX \_\_\_\_\_  
Proposed PMX \_\_\_\_\_

Gentlemen:

I have examined the application dated 1-17-90  
for the Meridian Oil Inc. Klein A #1  
Operator Lease & Well No.

B-31-26N-6W and my recommendations are as follows:  
Unit, S-T-R

Approve  
\_\_\_\_\_  
\_\_\_\_\_  
\_\_\_\_\_  
\_\_\_\_\_

Yours truly,

Ernie Burch