

8/20/02	9/9/02	ENGINEER MS	LOGGED IN KW	TYPE NSL	APP NO. 223248911
---------	--------	-------------	--------------	----------	-------------------

ABOVE THIS LINE FOR DIVISION USE ONLY

NEW MEXICO OIL CONSERVATION DIVISION

- Engineering Bureau -

1220 South St. Francis Drive, Santa Fe, NM 87505



ADMINISTRATIVE APPLICATION CHECKLIST

THIS CHECKLIST IS MANDATORY FOR ALL ADMINISTRATIVE APPLICATIONS FOR EXCEPTIONS TO DIVISION RULES AND REGULATIONS WHICH REQUIRE PROCESSING AT THE DIVISION LEVEL IN SANTA FE

Application Acronyms:

[NSL-Non-Standard Location] [NSP-Non-Standard Proration Unit] [SD-Simultaneous Dedication]
[DHC-Downhole Commingling] [CTB-Lease Commingling] [PLC-Pool/Lease Commingling]
[PC-Pool Commingling] [OLS - Off-Lease Storage] [OLM-Off-Lease Measurement]
[WFX-Waterflood Expansion] [PMX-Pressure Maintenance Expansion]
[SWD-Salt Water Disposal] [IPI-Injection Pressure Increase]
[EOR-Qualified Enhanced Oil Recovery Certification] [PPR-Positive Production Response]

[1] TYPE OF APPLICATION - Check Those Which Apply for [A]

[A] Location - Spacing Unit - Simultaneous Dedication

☒ NSL ☐ NSP ☐ SD

Check One Only for [B] or [C]

[B] Commingling - Storage - Measurement

☐ DHC ☐ CTB ☐ PLC ☐ PC ☐ OLS ☐ OLM

[C] Injection - Disposal - Pressure Increase - Enhanced Oil Recovery

☐ WFX ☐ PMX ☐ SWD ☐ IPI ☐ EOR ☐ PPR

[D] Other: Specify _____

[2] NOTIFICATION REQUIRED TO: - Check Those Which Apply, or ☐ Does Not Apply

[A] ☐ Working, Royalty or Overriding Royalty Interest Owners

[B] ☒ Offset Operators, Leaseholders or Surface Owner

[C] ☐ Application is One Which Requires Published Legal Notice

[D] ☐ Notification and/or Concurrent Approval by BLM or SLO
U.S. Bureau of Land Management - Commissioner of Public Lands, State Land Office

[E] ☐ For all of the above, Proof of Notification or Publication is Attached, and/or,

[F] ☐ Waivers are Attached

[3] SUBMIT ACCURATE AND COMPLETE INFORMATION REQUIRED TO PROCESS THE TYPE OF APPLICATION INDICATED ABOVE.

[4] **CERTIFICATION:** I hereby certify that the information submitted with this application for administrative approval is **accurate** and **complete** to the best of my knowledge. I also understand that **no action** will be taken on this application until the required information and notifications are submitted to the Division.

Note: Statement must be completed by an individual with managerial and/or supervisory capacity.

George A. Cox
Print or Type Name

George A. Cox
Signature

LANDMAN
Title

8-15-02
Date

George.Cox@XTOENERGY.COM
e-mail Address



August 15, 2002

CERTIFIED MAIL:

Mr. Michael E. Stogner
New Mexico Oil Conservation Division
1220 S. Saint Francis Dr.
Santa Fe, New Mexico 87504

RE: Application for Administrative Approval of Unorthodox Location
XTO Energy Inc.'s Schwerdtfeger "A" #3F Well
2,385' FNL and 2,580' FWL (SE/4 NW/4) Surface Location
Unit F, Section 6, T27N-R8W
San Juan County, New Mexico
Basin Dakota Pool, Wildcat Gallup Gas, Blanco Mesaverde Gas and Otero
Chacra Gas Formations

Dear Mr. Stogner:

XTO Energy Inc. hereby requests administrative approval for an unorthodox surface location and bottom hole locations for the above referenced well. Attached for your reference are the following exhibits:

1. Four Well location plats (NMOCD Form C-102)
2. List of Offset Owners
3. Ownership map for each formation
4. Topographic map
5. Production map for the Basin Dakota Pool, Wildcat Gallup Gas, Blanco Mesaverde Gas and Otero Chacra Formations
6. Copy of Administrative Order NSL-130-A, dated December 3, 2001, Amended Administrative Order NSL-130-A, dated March 25, 2002 and Addendum to Administrative Order NSL-130-A, as Amended, dated July 24, 2002

The rules state that the well should not be closer than 660 feet to the south and north lines nor closer than 660 feet to the east and west lines of a Gas Proration Unit and not closer than 10 feet to any interior quarter or quarter-quarter section line. Due to the existing topography, XTO was not able to place the well any further West for a surface location that would conform to current footage requirements. XTO Energy Inc. has directionally drilled this well. By directionally drilling the well we attempted to move the bottom hole of each formation closer to a standard location. We were successful in doing that in two of the four formations encountered.

Schwerdtfeger "A" #3F
Letter Dated August 15, 2002

The bottom hole location for each of the formations in the section are as follows:

Basin Dakota Pool -	2137' FNL & 1924' FWL @ 7400' MD
Wildcat Gallup Gas -	2146' FNL & 1946' FWL @ 6625' MD
Blanco Mesaverde Gas -	2166' FNL & 1993' FWL @ 5033' MD
Otero Chacra -	2179' FNL & 2023' FWL @ 3970' MD

I am resubmitting this application to include the Wildcat Gallup Gas Formation and to reflect the exact bottom hole footage that has been measured by the directional survey conducted on the wellbore. Based on the new bottom hole footages, the Basin Dakota Pool and the Blanco Mesaverde Gas formations are at a standard location for the 320 acre W/2 unit. The Wildcat Gallup Gas and Otero Chacra formations are spaced as 160 acre units and are at a non-standard location.

By certified mail, a copy of this application and request for administrative approval has been sent to all of the Basin Dakota Pool, Wildcat Gallup Gas, Blanco Mesaverde Gas, and Otero Chacra formation working interest owners and offset operators listed on the attached list. Based on the above information, XTO would like to request that the Administrative Order NSL-130-A along with the amended orders be approved for the new bottom hole footages reflected above and be amended to include the Wildcat Gallup Gas formation. Should you need any additional information please feel free to contact me at (817) 885-2454.

Sincerely,
XTO ENERGY INC.



George A. Cox, CPL
Landman

Enclosures

cc: Gary Markestad
Darrin Steed
Jeff Patton
Robin Tracy

DISTRICT I
1625 N. French Dr., Hobbs, N.M. 88240

DISTRICT II
811 South First, Artesia, N.M. 88210

DISTRICT III
1000 Rio Brazos Rd., Aztec, N.M. 87410

DISTRICT IV
2040 South Pacheco, Santa Fe, NM 87505

State of New Mexico
Energy, Minerals & Natural Resources Department

Form C-102
Revised August 15, 2000

OIL CONSERVATION DIVISION

2040 South Pacheco
Santa Fe, NM 87505

Submit to Appropriate District Office
State Lease - 4 Copies
Fee Lease - 3 Copies

☒ AMENDED REPORT

WELL LOCATION AND ACREAGE DEDICATION PLAT

¹ API Number 30-045-31051	² Pool Code 72319	³ Pool Name BLANCO MESAVERDE
⁴ Property Code	⁵ Property Name SCHWERTFEGER "A"	⁶ Well Number 3F
⁷ OGRID No. 167067	⁸ Operator Name XTO ENERGY INC.	⁹ Elevation 6757'

¹⁰ Surface Location

UL or lot no.	Section	Township	Range	Lot Idn	Feet from the	North/South line	Feet from the	East/West line	County
F	6	27-N	8-W		2385'	NORTH	2580'	WEST	SAN JUAN

¹¹ Bottom Hole Location If Different From Surface

UL or lot no.	Section	Township	Range	Lot Idn	Feet from the	North/South line	Feet from the	East/West line	County
F	6	27-N	8-W		2166'	NORTH	1993'	WEST	SAN JUAN
¹² Dedicated Acres 320.68 W/2			¹³ Joint or Infill I		¹⁴ Consolidation Code		¹⁵ Order No.		

NO ALLOWABLE WILL BE ASSIGNED TO THIS COMPLETION UNTIL ALL INTERESTS HAVE BEEN CONSOLIDATED
OR A NON-STANDARD UNIT HAS BEEN APPROVED BY THE DIVISION

<p>16</p> <p>16 CALC'D CORNER S 89-30-07 E 2664.3' (M)</p> <p>FD BC G.L.O. 1916</p> <p>LOT 4 LOT 3 LOT 2 LOT 1</p> <p>S 00-06-47 W 2605.1' (M)</p> <p>LOT 5 1993'</p> <p>2580'</p> <p>LOT 6</p> <p>LOT 7</p> <p>439'</p> <p>671'</p> <p>1082'</p> <p>84'</p> <p>220'</p> <p>6</p> <p>LAT: 36°36'17" N. LONG: 107°43'20" W.</p>				<p>17 OPERATOR CERTIFICATION</p> <p>I hereby certify that the information contained herein is true and complete to the best of my knowledge and belief</p> <p><u>Darrin Steed</u> Signature</p> <p><u>Darrin Steed</u> Printed Name</p> <p><u>Operations Engineer</u> Title</p> <p><u>August 12, 2002</u> Date</p>
				<p>18 SURVEYOR CERTIFICATION</p> <p>I hereby certify that the well location shown on this plat was plotted from the notes of the survey made by me or under my supervision and that the same is true and correct to the best of my knowledge and belief</p> <p><u>8894</u> Date of Survey</p> <p><u>8894</u> Signature</p> <p><u>8894</u> Seal of Professional Surveyor</p> <p><u>8894</u> Certificate Number</p>

DISTRICT II
811 South First, Artesia, N.M. 88210

DISTRICT III
1000 Rio Brazos Rd., Artec, N.M. 87410

DISTRICT IV
2040 South Pacheco, Santa Fe, NM 87505

OIL CONSERVATION DIVISION
2040 South Pacheco
Santa Fe, NM 87505

Submit to Appropriate District Office
State Lease - 4 Copies
Fee Lease - 3 Copies

☒ AMENDED REPORT

WELL LOCATION AND ACREAGE DEDICATION PLAT

1 API Number 30-045-31051		2 Pool Code 71599		3 Pool Name BASIN DAKOTA	
4 Property Code		5 Property Name SCHWERTFEGER "A"			6 Well Number 3F
7 OGRID No. 167067		8 Operator Name XTO ENERGY INC.			9 Elevation 6757'

¹⁰ Surface Location

UL or lot no.	Section	Township	Range	Lot idn	Feet from the	North/South line	Feet from the	East/West line	County
F	6	27-N	8-W		2385'	NORTH	2580'	WEST	SAN JUAN

"Bottom Hole Location If Different From Surface

UL or lot no.	Section	Township	Range	Lot Idn	Feet from the	North/South line	Feet from the	East/West line	County
F	6	27-N	8-W		2137'	NORTH	1924'	WEST	SAN JUAN

¹⁹ Dedicated Acres 320.68 w/2	¹⁸ Joint or Infill I	¹⁴ Consolidation Code	²⁰ Order No.
---	------------------------------------	----------------------------------	-------------------------

NO ALLOWABLE WILL BE ASSIGNED TO THIS COMPLETION UNTIL ALL INTERESTS HAVE BEEN CONSOLIDATED
OR A NON-STANDARD UNIT HAS BEEN APPROVED BY THE DIVISION

17 OPERATOR CERTIFICATION

I hereby certify that the information contained herein
is true and complete to the best of my knowledge and
belief

Warren Steed

Signature

Darrin Steed

Printed Name _____

Operations Engineer

Title

August 12, 2002
Date

Data

18 SURVEYOR CERTIFICATION

I hereby certify that the well location shown on this plot was plotted from field notes of actual surveys made by me or under my supervision and that the same is true and correct to the best of my belief.

Date of Survey _____

Signature and Seal of Professional Engineer.

8894

Certificate Number

DISTRICT I
1825 N. French Dr., Hobbs, N.M. 88240

DISTRICT II
811 South First, Artesia, N.M. 88210

DISTRICT III
1000 Rio Brazos Rd., Aztec, N.M. 87410

DISTRICT IV
2040 South Pacheco, Santa Fe, NM 87505

State of New Mexico
Energy, Minerals & Natural Resources Department

Form C-102
Revised August 15, 2000

OIL CONSERVATION DIVISION

2040 South Pacheco
Santa Fe, NM 87505

Submit to Appropriate District Office
State Lease - 4 Copies
Fee Lease - 3 Copies

☒ AMENDED REPORT

WELL LOCATION AND ACREAGE DEDICATION PLAT

¹ API Number 30-045-31051	² Pool Code	³ Pool Name WC GALLUP
⁴ Property Code	⁵ Property Name SCHWERTFEGER "A"	⁶ Well Number 3F
⁷ GRID No. 167067	⁸ Operator Name XTO ENERGY INC.	⁹ Elevation 6757'

¹⁰ Surface Location

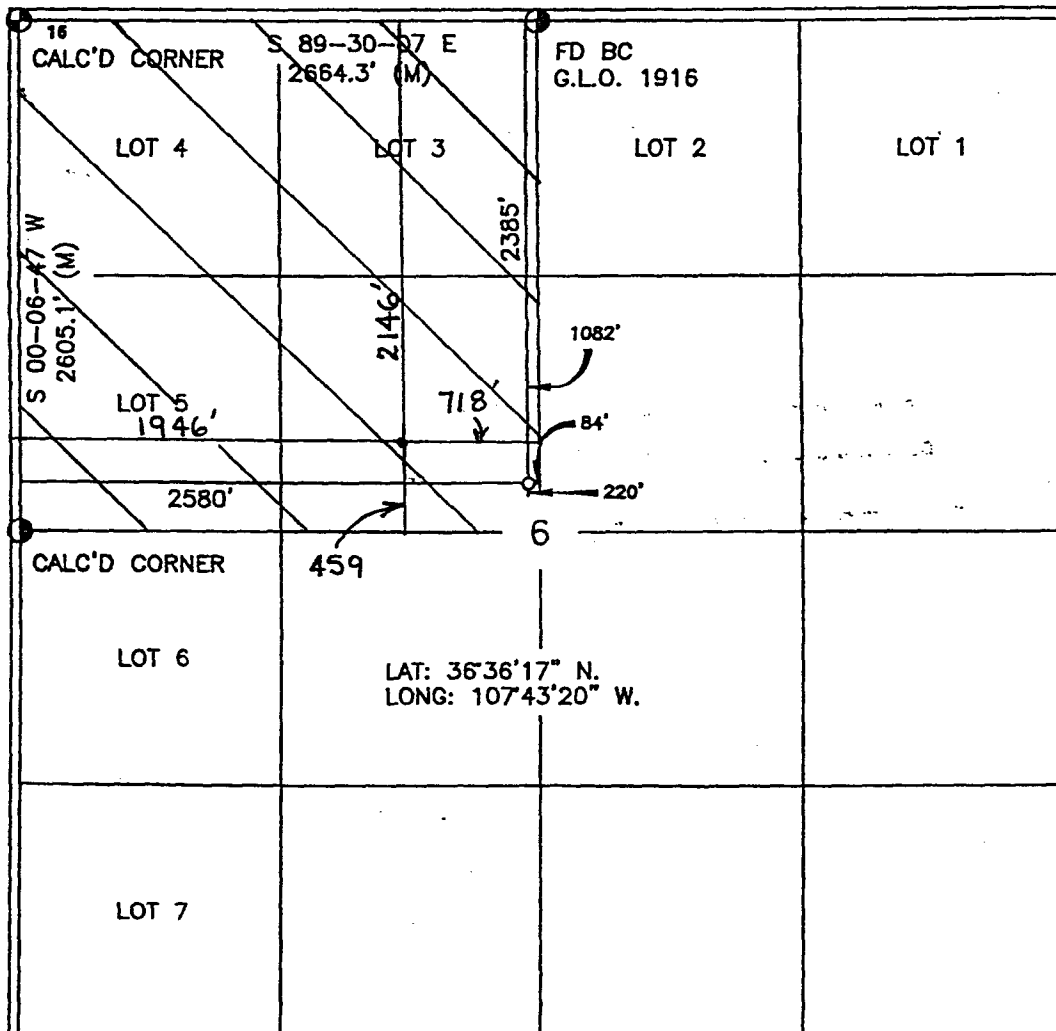
UL or lot no.	Section	Township	Range	Lot Idn	Feet from the	North/South line	Feet from the	East/West line	County
F	6	27-N	8-W		2385'	NORTH	2580'	WEST	SAN JUAN

¹¹ Bottom Hole Location If Different From Surface

UL or lot no.	Section	Township	Range	Lot Idn	Feet from the	North/South line	Feet from the	East/West line	County
F	6	27-N	8-W		2146'	NORTH	1946'	WEST	SAN JUAN

¹² Dedicated Acres 160 NW/4	¹³ Joint or Infill	¹⁴ Consolidation Code	¹⁵ Order No.
---	-------------------------------	----------------------------------	-------------------------

NO ALLOWABLE WILL BE ASSIGNED TO THIS COMPLETION UNTIL ALL INTERESTS HAVE BEEN CONSOLIDATED
OR A NON-STANDARD UNIT HAS BEEN APPROVED BY THE DIVISION



17 OPERATOR CERTIFICATION

I hereby certify that the information contained herein is true and complete to the best of my knowledge and belief

Darrin Steed
Signature
Darrin Steed
Printed Name
Operations Engineer
Title
August 12, 2002
Date

18 SURVEYOR CERTIFICATION

I hereby certify that the well location shown on this plat was plotted from the notes of previous surveys made by me or under my supervision and that the same is true and correct to the best of my belief

August 12, 2002
Date of Survey
[Signature]
Signature and Seal of Professional Surveyor

8894
Certificate Number

DISTRICT I
1825 N. French Dr., Hobbs, N.M. 88240

State of New Mexico
Energy, Minerals & Natural Resources Department

Form C-102
Revised August 15, 2000

DISTRICT II
811 South First, Artesia, N.M. 88210

DISTRICT III
1000 Rio Brazos Rd., Aztec, N.M. 87410

DISTRICT IV
2040 South Pacheco, Santa Fe, NM 87505

OIL CONSERVATION DIVISION

2040 South Pacheco
Santa Fe, NM 87505

Submit to Appropriate District Office
State Lease - 4 Copies
Fee Lease - 3 Copies

☒ AMENDED REPORT

WELL LOCATION AND ACREAGE DEDICATION PLAT

¹ API Number 30-045-31051	² Pool Code 82329	³ Pool Name OTERO CHACRA
⁴ Property Code	⁵ Property Name SCHWERTDFEGER "A"	⁶ Well Number 3F
⁷ GRID No. 167067	⁸ Operator Name XTO ENERGY INC.	⁹ Elevation 6757'

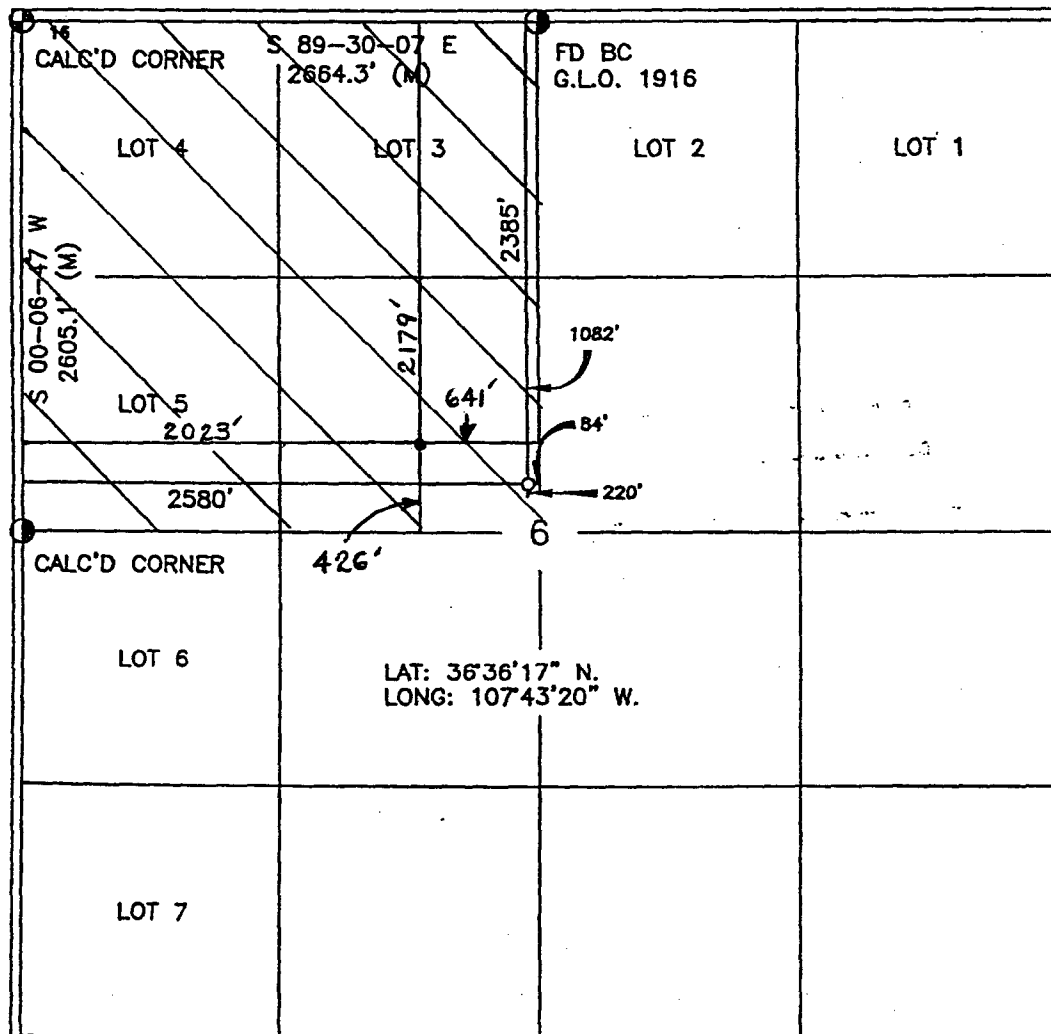
¹⁰ Surface Location

UL or lot no.	Section	Township	Range	Lot Idn	Feet from the	North/South line	Feet from the	East/West line	County
F	6	27-N	8-W		2385'	NORTH	2580'	WEST	SAN JUAN

¹¹ Bottom Hole Location If Different From Surface

UL or lot no.	Section	Township	Range	Lot Idn	Feet from the	North/South line	Feet from the	East/West line	County
F	6	27-N	8-W		2179'	NORTH	2023'	WEST	SAN JUAN
¹² Dedicated Acres 160 NW/4			¹³ Joint or Infill		¹⁴ Consolidation Code		¹⁵ Order No.		

NO ALLOWABLE WILL BE ASSIGNED TO THIS COMPLETION UNTIL ALL INTERESTS HAVE BEEN CONSOLIDATED
OR A NON-STANDARD UNIT HAS BEEN APPROVED BY THE DIVISION



17 OPERATOR CERTIFICATION

I hereby certify that the information contained herein
is true and complete to the best of my knowledge and
belief

Darrin Steel
Signature
Darrin Steel
Printed Name
Operations Engineer
Title
August 12, 2002
Date

18 SURVEYOR CERTIFICATION

I hereby certify that the well location shown on this plat
was plotted from the notes of the surveys made by
me or under my supervision, and that the same is true
and correct to the best of my knowledge and belief

August 12, 2002
Date of Survey
[Signature]
Signature and Seal of Professional Surveyor

8894
Certificate Number

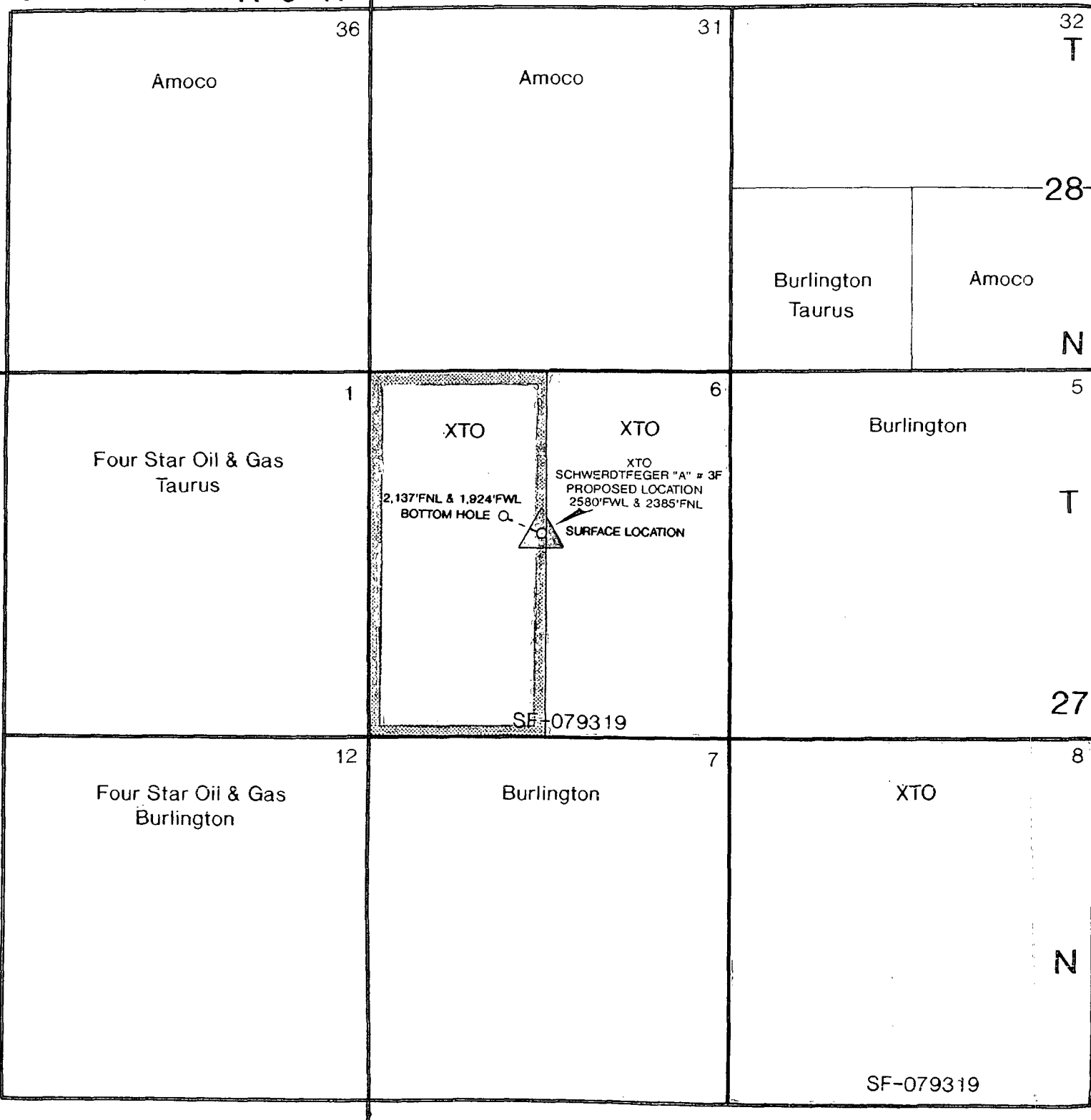
OFFSET OPERATORS AND OWNERS NOTIFICATION LIST
SCHWERDTFEGER "A" #3F WELL

Burlington Resources Oil & Gas
P.O. Box 4289
Farmington, NM 87499-4289
Attention: Dawn Howell

Four Star Oil & Gas
Attn: NOJV Manager
P.O. Box 36366
Houston, TX 77236

BPAmoco
P.O. Box 3092
Houston, TX 77253
Attention: Steve Reinert

Taurus Exploration USA
2198 Bloomfield Hwy
Farmington, NM 87404
Attn: Rich Corcoran





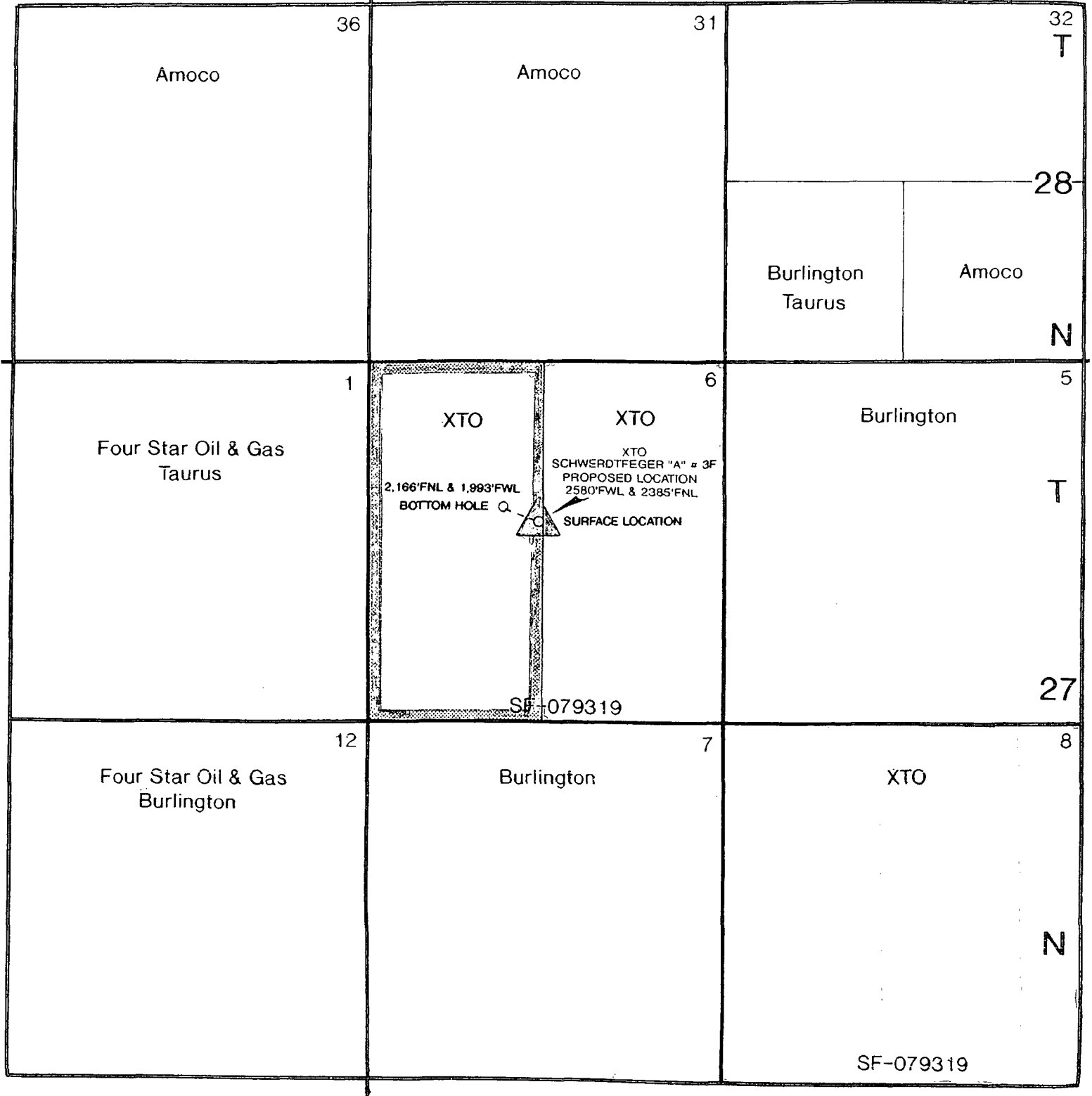
SECTION PLAT OF 9 SQUARE MILES

STATE: New Mexico COUNTY: San Juan
PROSPECT: MESAVERDE FORMATION DATE: _____
SECTIONS: 6 BLOCK: _____ SURVEY: _____
ACRES: _____ TOWNSHIP: 27North RANGE: 8West

SCALE: 1"=2,000'

R-9-W

R-8-W





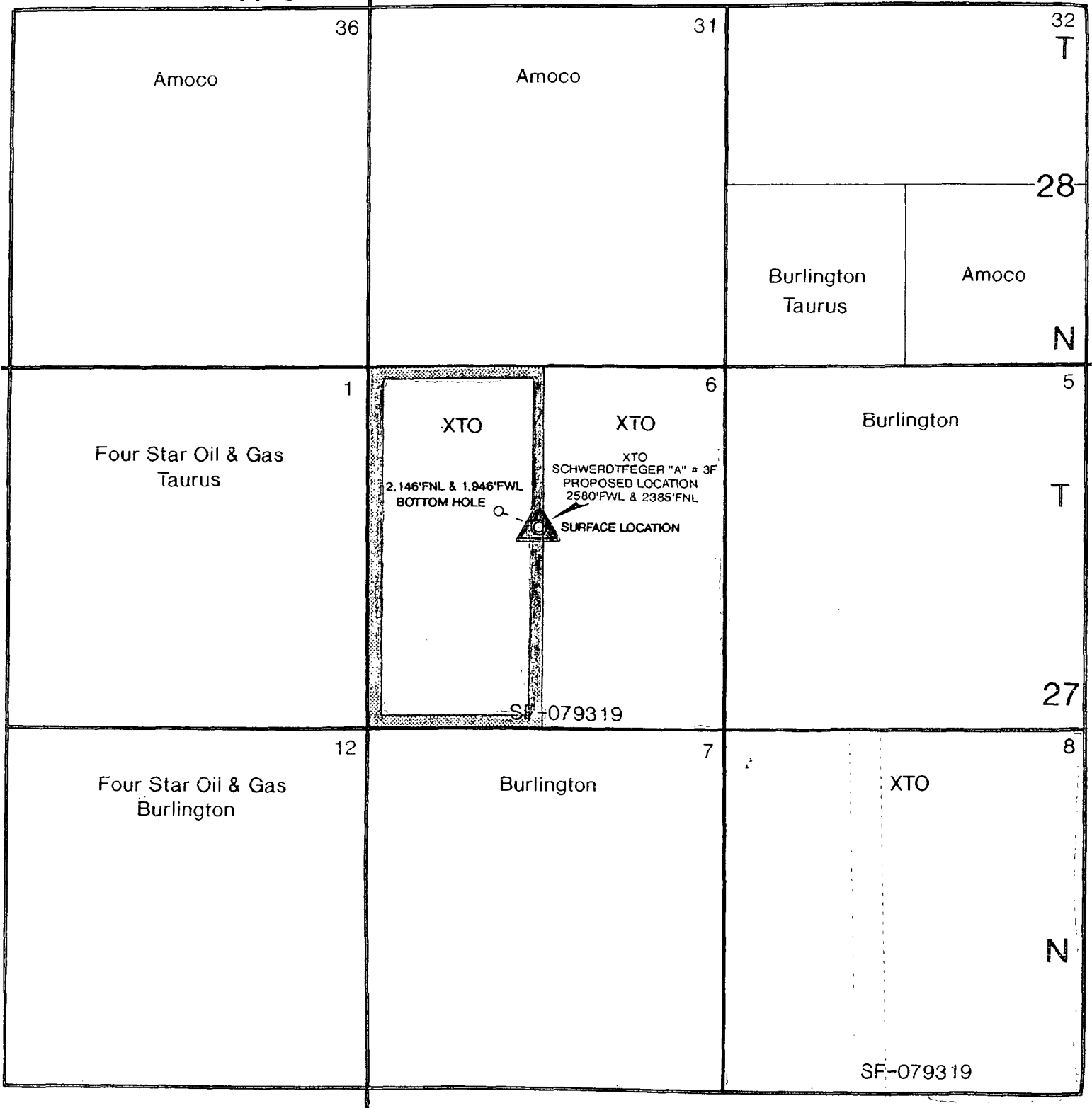
SECTION PLAT OF 9 SQUARE MILES

STATE: New Mexico COUNTY: San Juan
PROSPECT: GALLUP FORMATION DATE: _____
SECTIONS: 6 BLOCK: _____ SURVEY: _____
ACRES: _____ TOWNSHIP: 27North RANGE: 8West

SCALE: 1"=2,000'

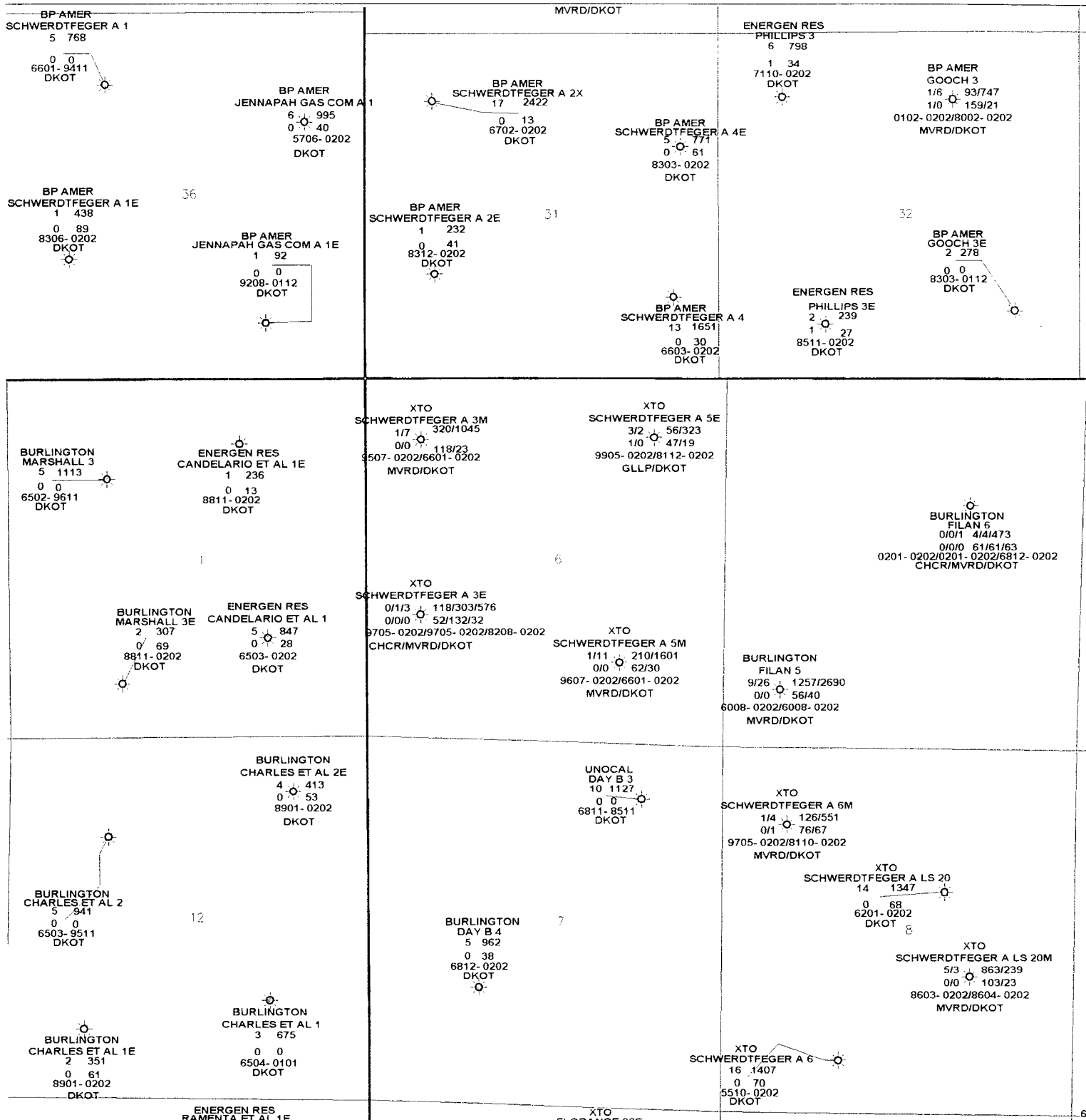
R-9-W

R-8-W



SF-079319

A detailed topographic map of a section of San Juan County, New Mexico. The map features contour lines indicating elevation, with labels such as 5500, 5600, 5700, 5800, 5900, 6000, 6100, 6200, 6300, 6400, 6500, 6600, 6700, 6800, 6900, 7000, 7100, 7200, 7300, 7400, 7500, 7600, 7700, 7800, 7900, 8000, 8100, 8200, 8300, 8400, 8500, 8600, 8700, 8800, 8900, 9000, 9100, 9200, 9300, 9400, 9500, 9600, 9700, 9800, 9900, 10000, 10100, 10200, 10300, 10400, 10500, 10600, 10700, 10800, 10900, 11000, 11100, 11200, 11300, 11400, 11500, 11600, 11700, 11800, 11900, 12000, 12100, 12200, 12300, 12400, 12500, 12600, 12700, 12800, 12900, 13000, 13100, 13200, 13300, 13400, 13500, 13600, 13700, 13800, 13900, 14000, 14100, 14200, 14300, 14400, 14500, 14600, 14700, 14800, 14900, 15000, 15100, 15200, 15300, 15400, 15500, 15600, 15700, 15800, 15900, 16000, 16100, 16200, 16300, 16400, 16500, 16600, 16700, 16800, 16900, 17000, 17100, 17200, 17300, 17400, 17500, 17600, 17700, 17800, 17900, 18000, 18100, 18200, 18300, 18400, 18500, 18600, 18700, 18800, 18900, 19000, 19100, 19200, 19300, 19400, 19500, 19600, 19700, 19800, 19900, 20000, 20100, 20200, 20300, 20400, 20500, 20600, 20700, 20800, 20900, 21000, 21100, 21200, 21300, 21400, 21500, 21600, 21700, 21800, 21900, 22000, 22100, 22200, 22300, 22400, 22500, 22600, 22700, 22800, 22900, 23000, 23100, 23200, 23300, 23400, 23500, 23600, 23700, 23800, 23900, 24000, 24100, 24200, 24300, 24400, 24500, 24600, 24700, 24800, 24900, 25000, 25100, 25200, 25300, 25400, 25500, 25600, 25700, 25800, 25900, 26000, 26100, 26200, 26300, 26400, 26500, 26600, 26700, 26800, 26900, 27000, 27100, 27200, 27300, 27400, 27500, 27600, 27700, 27800, 27900, 28000, 28100, 28200, 28300, 28400, 28500, 28600, 28700, 28800, 28900, 29000, 29100, 29200, 29300, 29400, 29500, 29600, 29700, 29800, 29900, 30000, 30100, 30200, 30300, 30400, 30500, 30600, 30700, 30800, 30900, 31000, 31100, 31200, 31300, 31400, 31500, 31600, 31700, 31800, 31900, 32000, 32100, 32200, 32300, 32400, 32500, 32600, 32700, 32800, 32900, 33000, 33100, 33200, 33300, 33400, 33500, 33600, 33700, 33800, 33900, 34000, 34100, 34200, 34300, 34400, 34500, 34600, 34700, 34800, 34900, 35000, 35100, 35200, 35300, 35400, 35500, 35600, 35700, 35800, 35900, 36000, 36100, 36200, 36300, 36400, 36500, 36600, 36700, 36800, 36900, 37000, 37100, 37200, 37300, 37400, 37500, 37600, 37700, 37800, 37900, 38000, 38100, 38200, 38300, 38400, 38500, 38600, 38700, 38800, 38900, 39000, 39100, 39200, 39300, 39400, 39500, 39600, 39700, 39800, 39900, 40000, 40100, 40200, 40300, 40400, 40500, 40600, 40700, 40800, 40900, 41000, 41100, 41200, 41300, 41400, 41500, 41600, 41700, 41800, 41900, 42000, 42100, 42200, 42300, 42400, 42500, 42600, 42700, 42800, 42900, 43000, 43100, 43200, 43300, 43400, 43500, 43600, 43700, 43800, 43900, 44000, 44100, 44200, 44300, 44400, 44500, 44600, 44700, 44800, 44900, 45000, 45100, 45200, 45300, 45400, 45500, 45600, 45700, 45800, 45900, 46000, 46100, 46200, 46300, 46400, 46500, 46600, 46700, 46800, 46900, 47000, 47100, 47200, 47300, 47400, 47500, 47600, 47700, 47800, 47900, 48000, 48100, 48200, 48300, 48400, 48500, 48600, 48700, 48800, 48900, 49000, 49100, 49200, 49300, 49400, 49500, 49600, 49700, 49800, 49900, 50000, 50100, 50200, 50300, 50400, 50500, 50600, 50700, 50800, 50900, 51000, 51100, 51200, 51300, 51400, 51500, 51600, 51700, 51800, 51900, 52000, 52100, 52200, 52300, 52400, 52500, 52600, 52700, 52800, 52900, 53000, 53100, 53200, 53300, 53400, 53500, 53600, 53700, 53800, 53900, 54000, 54100, 54200, 54300, 54400, 54500, 54600, 54700, 54800, 54900, 55000, 55100, 55200, 55300, 55400, 55500, 55600, 55700, 55800, 55900, 56000, 56100, 56200, 56300, 56400, 56500, 56600, 56700, 56800, 56900, 57000, 57100, 57200, 57300, 57400, 57500, 57600, 57700, 57800, 57900, 58000, 58100, 58200, 58300, 58400, 58500, 58600, 58700, 58800, 58900, 59000, 59100, 59200, 59300, 59400, 59500, 59600, 59700, 59800, 59900, 60000, 60100, 60200, 60300, 60400, 60500, 60600, 60700, 60800, 60900, 61000, 61100, 61200, 61300, 61400, 61500, 61600, 61700, 61800, 61900, 62000, 62100, 62200, 62300, 62400, 62500, 62600, 62700, 62800, 62900, 63000, 63100, 63200, 63300, 63400, 63500, 63600, 63700, 63800



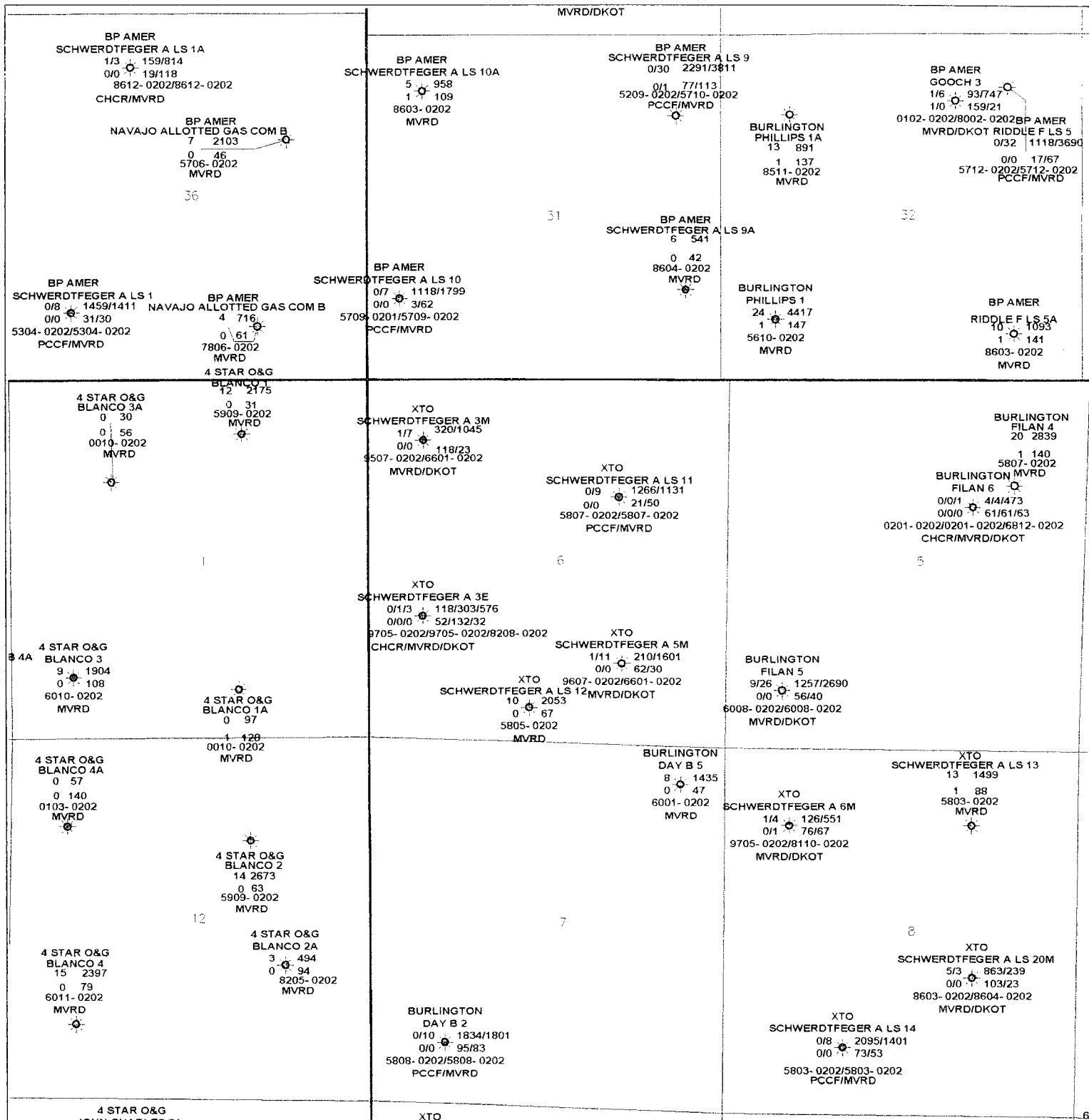
WELLS W/PRODUCTION

Operator
Well Name & Number
Cum Oil MBO ● Cum Gas MMCF
Curr Rate Bopd ● Curr Rate Mcfd
Start-End Date
Formation

XTO Energy Inc.

SAN JUAN COUNTY, NEW MEXICO
9 SECTION - 6-27N-8W
DAKOTA PRODUCERS

Johny LeBon P Tracy B1/4/2002
Scale: 1:24000 1" = 2000' 6778DKOT



WELLS W/PRODUCTION

Operator
Well Name & Number
Cum Oil MBO ● Cum Gas MMCF
Curr Rate Bopd ● Curr Rate Mcfd
Start-End Date
Formation

XTO ENERGY, INC.

SAN JUAN COUNTY, NEW MEXICO
9 SECTION - 6-27N-8W
MESA VERDE PRODUCERS

Johnny LeBon R Tracy 9/14/2002
Scale 1"=4000' 1"=3000' 6278MVRD

36

31

32

1

23

25

12

7

28

XTO
 SCHWERTFEGER A 5E
 3/2 56/323
 1/0 47/19
 9905- 0202/8112- 0202
 GLLP/DKOT

WELLS W/PRODUCTION

Operator
 Well Name & Number
 Cum Oil MBO ● Cum Gas MMCF
 Curr Rate Bopd ● Curr Rate Mcfd
 Start-End Date
 Formation

GALLUP

XTO Energy Inc.

SAN JUAN COUNTY, NEW MEXICO
 9 SECTION - 6-27N-8W
 GALLUP FORMATION

Johnny LeBen

R. Tracy

8/14/2002

Scale 1/24000

1" = 2000'

6278GLP GPF

BP AMER
SCHWERTFEGER A LS 1A
1/3 159/814
0/0 19/118
8612- 0202/8612- 0202
CHCR/MVRD

36

31

32

BURLINGTON
FILAN 6
0/0/1 4/4/473
0/0/0 61/61/63
0201- 0202/0201- 0202/6812- 0202
CHCR/MVRD/DKOT

5

XTO
SCHWERTFEGER A 3E
0/1/3 118/303/576
0/0/0 52/132/32
9705- 0202/9705- 0202/8208- 0202
CHCR/MVRD/DKOT

6

4 STAR O&G
BLANCO 25
0 327
0 29
7506- 0202
CHCR

12

7

8

9111

XTO

WELLS W/PRODUCTION

Operator
Well Name & Number
Cum Oil MBO ● Cum Gas MMCF
Curr Rate Bopd ● Curr Rate Mcfd
Start-End Date
Formation

XTO ENERGY, INC.

SAN JUAN COUNTY, NEW MEXICO
9 SECTION - 6-27N-8W
CHACRA PRODUCERS

Johnny LeBlon	R. Tracy	8/14/2007
Scale : 24000	1" = 2000'	9279CHCR



NEW MEXICO ENERGY, MINERALS and NATURAL RESOURCES DEPARTMENT

GARY E. JOHNSON
Governor
Jennifer A. Salisbury
Cabinet Secretary

December 3, 2001

Lori Wrotenbery
Director
Oil Conservation Division

XTO Energy, Inc.
810 Houston Street - Suite 2000
Fort Worth, Texas 76102-6298
Attention: George A. Cox
George_Cox@XTOEnergy.com

Telefax No. (817) 870-1671

Administrative Order NSL-130-A

Dear Mr. Cox:

Reference is made to the following: (i) your application submitted to the New Mexico Oil Conservation Division ("Division") on November 13, 2001 (*application reference No. pKRI0-131857121*); and (ii) the records of the Division in Aztec and Santa Fe: all concerning XTO Energy, Inc.'s ("XTO") request for an exception to the well location requirements provided within the "*Special Rules for the Blanco-Mesaverde Pool*," as promulgated by Division Order No. R-10987-A.

The proposed well that is the subject of this application is to be drilled as a third infill gas well within an existing standard 320.68-acre stand-up gas spacing and proration unit ("GPU") for the Blanco-Mesaverde Pool (72319) comprising Lots 3 through 7, the SE/4 NW/4, and the E/2 SW/4 (W/2 equivalent) of Section 6, Township 27 North, Range 8 West, NMPM, San Juan County, New Mexico. This GPU is currently dedicated to the following XTO operated wells:

- (i) Schwerdtfeger "A" Well No. 3-M (API No. 30-045-11605), located at a standard gas well location 885 feet from the North line and 815 feet from the West line (Lot 4/Unit D) of Section 6;
- (ii) Schwerdtfeger "A" Well No. 3-E (API No. 30-045-24583), located at a standard gas well location 1800 feet from the South line and 800 feet from the West line (Lot 6/Unit L) of Section 6; and
- (iii) Schwerdtfeger "A" LS Well No. 12 (API No. 30-045-06756), located at an unorthodox gas well location (approved by Division Administrative Order NSL-130, dated January 29, 1958) 500 feet from the South line and 2350 feet from the West line (Unit N) of Section 6.

This application has been duly filed under the provisions of Division Rules 104.F and 605.B.

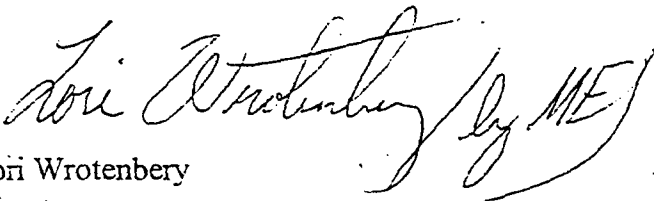
By the authority granted me under the provisions of Division Rule 104.F (2), the following

described well to be drilled as the third infill well on this GPU at an unorthodox gas well location in Section 6 is hereby approved:

**Schwerdtfeger "A" Well No. 12-B
2385' FNL & 2580' FWL (Unit F).**

Further, all four of the aforementioned Schwerdtfeger "A" Wells No. 3-M, 3-E, and 12-B, Schwerdtfeger "A" LS Well No. 12, and existing 320.68-acre GPU will be subject to all existing rules, regulations, policies, and procedures applicable to prorated gas pools in Northwest, New Mexico and to the Blanco-Mesaverde Pool.

Sincerely,

A handwritten signature in cursive script, appearing to read "Lori Wrotenbery" followed by a large flourish and the initials "MEJ".

Lori Wrotenbery
Director
LW/MES/kv

cc: New Mexico Oil Conservation Division - Aztec
U. S. Bureau of Land Management - Farmington
File: NSL-130



NEW MEXICO ENERGY, MINERALS and NATURAL RESOURCES DEPARTMENT

GARY E. JOHNSON

Governor

BETTY RIVERA

Cabinet Secretary

March 25, 2002

Lori Wrotenberg

Director

Oil Conservation Division

XTO Energy, Inc.
(formerly Cross Timbers Operating Company)
810 Houston Street - Suite 2000
Fort Worth, Texas 76102-6298
Attention: George A. Cox
George_Cox@XTOEnergy.com

Telefax No. (817) 870-1671

AMENDED Administrative Order NSL-130-A

Dear Mr. Cox:

Reference is made to the following: (i) your application that was submitted to the New Mexico Oil Conservation Division ("Division") on March 4, 2002 (*application reference No. pKRV0-206430054*) to amend Division Administrative Order NSL-130-A, dated December 3, 2001; and (ii) the Division's records in Santa Fe, including the file on Division Administrative Orders NSL-130 and 130-A.

Division Administrative Order NSL-130-A, authorized XTO Energy, Inc. ("XTO") to drill its Schwerdtfeger "A" Well No. 12-B to the Blanco-Mesaverde Pool as a third infill well within an existing 320.68-acre gas spacing and proration unit ("GPU") comprising Lots 3 through 7, the SE/4 NW/4, and E/2 SW/4 (W/2 equivalent) of Section 6, Township 27 North, Range 8 West, NMPM, San Juan County, New Mexico, at an unorthodox gas well location 2385 feet from the North line and 2580 feet from the West line (Unit F) of Section 6.

At this time XTO seeks to amend Division Administrative Order NSL-130-A to: (i) change the designation of this well from the Schwerdtfeger "A" Well No. 12-B to the Schwerdtfeger "A" Well No. 3-F; and (ii) include the deeper Basin-Dakota Pool to the provisions of this order, establishing it as a second infill gas well within an existing standard 320.68-acre GPU for the Basin-Dakota Pool (71629) also comprising Lots 3 through 7, the SE/4 NW/4, and the E/2 SW/4 (W/2 equivalent) of Section 6. Pursuant to Rule II.C (1) of the "*Special Rules and Regulations for the Basin-Dakota Pool*," as promulgated by Division Order No. R-10987-B (2), issued in Case No. 12745 on January 29, 2002, this location is considered to be unorthodox.

The Dakota GPU is currently dedicated to the following XTO operated wells:

- (i) Schwerdtfeger "A" Well No. 3 M (API No. 30-045-11605), located at a

standard gas well location 885 feet from the North line and 815 feet from the West line (Lot 4/Unit D) of Section 6; and

- (ii) Schwerdtfeger "A" Well No. 3-E (API No. 30-045-24583), located at a standard gas well location 1800 feet from the South line and 800 feet from the West line (Lot 6/Unit L) of Section 6.

The application has been duly filed under the provisions of Division Rules 104.F and 605.B.

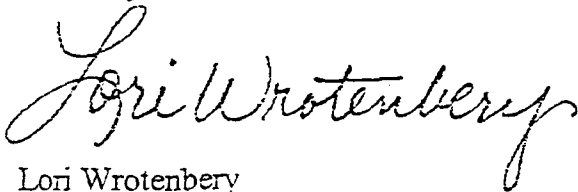
By the authority granted me under the provisions of Division Rule 104.F (2), the above-described Schwerdtfeger "A" Well No. 3-F is hereby approved as a second infill Dakota gas well location on the 320.68-acre GPU comprising the W/2 equivalent of Section 6.

Further, all three of the aforementioned Schwerdtfeger "A" Wells No. 3-M, 3-E, and 3-F, and existing 320.68-acre GPU will be subject to all existing rules, regulations, policies, and procedures applicable to prorated gas pools in Northwest, New Mexico and to the Basin-Dakota Pool.

All other provisions of Order NSL-130-A not in conflict with this change shall remain in full force and effect until further notice

Jurisdiction of this case is retained for the entry of such further orders as the Division may deem necessary.

Sincerely,



Lori Wrotenbery
Director

LW/MES/kv

cc: New Mexico Oil Conservation Division - Aztec
U. S. Bureau of Land Management - Farmington
File: NSL-130
NSL-130-A

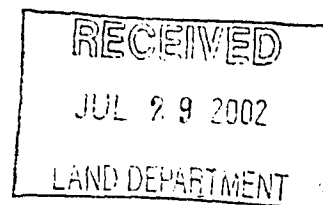


NEW MEXICO ENERGY, MINERALS and NATURAL RESOURCES DEPARTMENT

GARY E. JOHNSON
Governor
BETTY RIVERA
Cabinet Secretary

Lori Wrotenbery
Director
Oil Conservation Division

July 24, 2002



XTO Energy, Inc.
810 Houston Street
Fort Worth, Texas 76102-6298
Attention: George A. Cox

ADDENDUM TO ADMINISTRATIVE ORDER NSL-130-A, AS AMENDED

Dear Mr. Cox:

Reference is made to: (i) your letter of application dated June 25, 2002 (*application reference No. pKRV0-218254039*); and (ii) the records of the New Mexico Oil Conservation Division ("Division") in Santa Fe, including the files on Division Administrative Orders NSL-130 and 130-A, as amended.

It is our understanding that XTO Energy, Inc. ("XTO") now intends to directionally drill its proposed Schwerdtfeger "A" Well No. 3-F (API No. 30-045-31051), which was the subject of Division Administrative Order NSL-130-A, as amended, from a surface location 2385 feet from the North line and 2580 feet from the West line (Unit F) of Section 6, Township 27 North, Range 8 West, NMPM, San Juan County, New Mexico, in a manner that penetrates the Blanco-Mesaverde, Basin-Dakota, and Otero-Chacra Pools at a targeted standard subsurface gas well location 1905 feet from the North line and 1964 feet from the West line (Unit F) of Section 6.

The existing 320.68-acre gas spacing and proration unit in both the Blanco-Mesaverde and Basin-Dakota Pools comprising Lots 3 through 7, the SE/4 NW/4, and the E/2 SW/4 (W/2 equivalent) of Section 6 is to be dedicated to this well. Gas production from the Chacra formation from this well is to be dedicated to Lots 3, 4, and 5 and the SE/4 NW/4 (NW/4 equivalent) of Section 6 in order to form a standard 160.78-acre gas spacing unit for the Otero-Chacra Pool.

Pursuant to Division Rule 111.A (7) and 111.C (1) XTO is granted the authority to directionally drill its Schwerdtfeger "A" Well No. 3-F to the targeted standard subsurface gas well location in all three intervals. Further, XTO shall comply with all provisions of Division Rule 111 applicable in this matter.

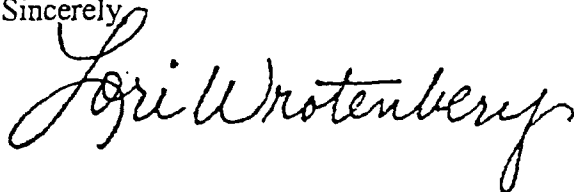
Since the proposed directional drilling of the Schwerdtfeger "A" Well No. 3-F will be to a standard subsurface location in all three intervals, Division Administrative Order NSL-130-A, dated December 3, 2001, and AMENDED Administrative Order NSL-130-A, dated March 25, 2002, are hereby placed in abeyance until further notice.

Addendum to Administrative Order NSL-130-A
XTO Energy Inc.
July 24, 2002
Page 2

The aforementioned multi-completed gas well and applicable spacing units will be subject to all existing rules, regulations, policies, and procedures applicable to the three pools.

Jurisdiction of this case is retained for the entry of such further orders as the Division may deem necessary.

Sincerely

A handwritten signature in cursive script that reads "Lori Wrotenbery". The signature is written in dark ink and is positioned below the word "Sincerely".

Lori Wrotenbery
Director

LW/MES/kv

cc: New Mexico Oil Conservation Division - Aztec
U. S. Bureau of Land Management - Farmington
File: NSL-130
NSL-130-A



August 15, 2002

CERTIFIED MAIL:


Burlington Resources Oil & Gas
P.O. Box 4289
Farmington, NM 87499-4289
Attention: Dawn Howell

RE: Application for Administrative Approval of Unorthodox Location
XTO Energy Inc.'s Schwerdtfeger "A" #3F Well
2,385' FNL and 2,580' FWL (SE/4 NW/4) Surface Location
Unit F, Section 6, T27N-R8W
San Juan County, New Mexico
Basin Dakota Pool, Wildcat Gallup Gas, Blanco Mesaverde Gas and Otero
Chacra Gas Formations

Gentlemen:

Enclosed please find a copy of the above captioned application that has been sent to the NMOCD for administrative approval. Should you not agree with the request, please notify the NMOCD within 20 days of the date of this application. Should you have any questions, concerning the operations, please feel free to contact me at (817) 885-2454.

Sincerely,
XTO ENERGY INC.


George A. Cox, CPL
Landman

Enclosures

XTO Energy Inc. • 810 Houston Street • Fort Worth, Texas 76102-6298 • (817) 870-2800 • Fax: (817) 870-1671

XTO Energy Inc. • 810 Houston Street • Fort Worth, Texas 76102-6298 • (817) 870-2800 • Fax: (817) 870-1671

XTO Energy Inc. • 810 Houston Street • Fort Worth, Texas 76102-6298 • (817) 870-2800 • Fax: (817) 870-1671



August 15, 2002

CERTIFIED MAIL:


Four Star Oil & Gas
Attn: NOJV Manager
P.O. Box 36366
Houston, TX 77236

RE: Application for Administrative Approval of Unorthodox Location
XTO Energy Inc.'s Schwerdtfeger "A" #3F Well
2,385' FNL and 2,580' FWL (SE/4 NW/4) Surface Location
Unit F, Section 6, T27N-R8W
San Juan County, New Mexico
Basin Dakota Pool, Wildcat Gallup Gas, Blanco Mesaverde Gas and Otero
Chacra Gas Formations

Gentlemen:

Enclosed please find a copy of the above captioned application that has been sent to the NMOCD for administrative approval. Should you not agree with the request, please notify the NMOCD within 20 days of the date of this application. Should you have any questions, concerning the operations, please feel free to contact me at (817) 885-2454.

Sincerely,
XTO ENERGY INC.


George A. Cox, CPL
Landman

Enclosures



August 15, 2002

CERTIFIED MAIL:

BPAmoco
P.O. Box 3092
Houston, TX 77253
Attention: Steve Reinert

RE: Application for Administrative Approval of Unorthodox Location
XTO Energy Inc.'s Schwerdtfeger "A" #3F Well
2,385' FNL and 2,580' FWL (SE/4 NW/4) Surface Location
Unit F, Section 6, T27N-R8W
San Juan County, New Mexico
Basin Dakota Pool, Wildcat Gallup Gas, Blanco Mesaverde Gas and Otero
Chacra Gas Formations

Gentlemen:

Enclosed please find a copy of the above captioned application that has been sent to the NMOCD for administrative approval. Should you not agree with the request, please notify the NMOCD within 20 days of the date of this application. Should you have any questions, concerning the operations, please feel free to contact me at (817) 885-2454.

Sincerely,
XTO ENERGY INC.

A handwritten signature in black ink, appearing to read 'George A. Cox'.

George A. Cox, CPL
Landman

Enclosures

XTO Energy Inc. • 810 Houston Street • Fort Worth, Texas 76102-6298 • (817) 870-2800 • Fax: (817) 870-1671



August 15, 2002

CERTIFIED MAIL:


Taurus Exploration USA
2198 Bloomfield Hwy.
Farmington, NM 87404
Attention: Rich Corcoran

RE: Application for Administrative Approval of Unorthodox Location
XTO Energy Inc.'s Schwerdtfeger "A" #3F Well
2,385' FNL and 2,580' FWL (SE/4 NW/4) Surface Location
Unit F, Section 6, T27N-R8W
San Juan County, New Mexico
Basin Dakota Pool, Wildcat Gallup Gas, Blanco Mesaverde Gas and Otero
Chacra Gas Formations

Gentlemen:

Enclosed please find a copy of the above captioned application that has been sent to the NMOCD for administrative approval. Should you not agree with the request, please notify the NMOCD within 20 days of the date of this application. Should you have any questions, concerning the operations, please feel free to contact me at (817) 885-2454.

Sincerely,
XTO ENERGY INC.


George A. Cox, CPL
Landman

Enclosures

SENDER: COMPLETE THIS SECTION	COMPLETE THIS SECTION ON DELIVERY
<p>■ Complete items 1, 2, and 3. Also complete item 4 if Restricted Delivery is desired.</p> <p>■ Print your name and address on the reverse so that we can return the card to you.</p> <p>■ Attach this card to the back of the mailpiece, or on the front if space permits.</p>	<p>A. Signature X <input type="checkbox"/> Agent <input type="checkbox"/> Addressee</p> <p>B. Received by (<i>Printed Name</i>) C. Date of Delivery</p> <p>D. Is delivery address different from item 1? <input type="checkbox"/> Yes If YES, enter delivery address below: <input type="checkbox"/> No</p>
<p>1. Article Addressed to:</p> <p>Taurus Exploration USA 2198 Bloomfield Hwy Farmington, NM 87404 Attn: Rich Corcoran gac:Schwerdtfeger "A" #3F</p>	<p>3. Service Type <input type="checkbox"/> Certified Mail <input type="checkbox"/> Express Mail <input type="checkbox"/> Registered <input type="checkbox"/> Return Receipt for Merchandise <input type="checkbox"/> Insured Mail <input type="checkbox"/> C.O.D.</p> <p>4. Restricted Delivery? (<i>Extra Fee</i>) <input type="checkbox"/> Yes</p>
<p>2. Article Number 7002 0510 0003 0883 3521 <i>(Transfer from service label)</i></p>	
<p>PS Form 3811, August 2001 Domestic Return Receipt 102595-02-M-1035</p>	

SENDER: COMPLETE THIS SECTION	COMPLETE THIS SECTION ON DELIVERY
<p>■ Complete items 1, 2, and 3. Also complete item 4 if Restricted Delivery is desired.</p> <p>■ Print your name and address on the reverse so that we can return the card to you.</p> <p>■ Attach this card to the back of the mailpiece, or on the front if space permits.</p>	<p>A. Signature X <input type="checkbox"/> Agent <input type="checkbox"/> Addressee</p> <p>B. Received by (<i>Printed Name</i>) C. Date of Delivery</p> <p>D. Is delivery address different from item 1? <input type="checkbox"/> Yes If YES, enter delivery address below: <input type="checkbox"/> No</p>
<p>1. Article Addressed to:</p> <p>BP Amoco P. O. Box 3092 Houston, TX 77253 Attn: Steve Reinert gac:Schwerdtfeger "A" #3F</p>	<p>3. Service Type <input type="checkbox"/> Certified Mail <input type="checkbox"/> Express Mail <input type="checkbox"/> Registered <input type="checkbox"/> Return Receipt for Merchandise <input type="checkbox"/> Insured Mail <input type="checkbox"/> C.O.D.</p> <p>4. Restricted Delivery? (<i>Extra Fee</i>) <input type="checkbox"/> Yes</p>
<p>2. Article Number 7002 0510 0003 0883 3538 <i>(Transfer from service label)</i></p>	
<p>PS Form 3811, August 2001 Domestic Return Receipt 102595-02-M-1035</p>	

SENDER: COMPLETE THIS SECTION	COMPLETE THIS SECTION ON DELIVERY						
<p>■ Complete items 1, 2, and 3. Also complete item 4 if Restricted Delivery is desired.</p> <p>■ Print your name and address on the reverse so that we can return the card to you.</p> <p>■ Attach this card to the back of the mailpiece, or on the front if space permits.</p>	<p>A. Signature X <input type="checkbox"/> Agent <input type="checkbox"/> Addressee</p> <table border="1" style="width: 100%; border-collapse: collapse;"> <tr> <td style="width: 60%; padding: 2px;">B. Received by (<i>Printed Name</i>)</td> <td style="width: 40%; padding: 2px;">C. Date of Delivery</td> </tr> </table> <p>D. Is delivery address different from item 1? <input type="checkbox"/> Yes If YES, enter delivery address below: <input type="checkbox"/> No</p>	B. Received by (<i>Printed Name</i>)	C. Date of Delivery				
B. Received by (<i>Printed Name</i>)	C. Date of Delivery						
<p>1. Article Addressed to:</p> <p>Burlington Resources Oil & Gas P. O. Box 4289 Farmington, NM 87499-4289 Attn: Dawn Howell gac:Schwerdtfeger "A" #3F</p>	<p>3. Service Type</p> <table style="width: 100%;"> <tr> <td><input type="checkbox"/> Certified Mail</td> <td><input type="checkbox"/> Express Mail</td> </tr> <tr> <td><input type="checkbox"/> Registered</td> <td><input type="checkbox"/> Return Receipt for Merchandise</td> </tr> <tr> <td><input type="checkbox"/> Insured Mail</td> <td><input type="checkbox"/> C.O.D.</td> </tr> </table> <p>4. Restricted Delivery? (<i>Extra Fee</i>) <input type="checkbox"/> Yes</p>	<input type="checkbox"/> Certified Mail	<input type="checkbox"/> Express Mail	<input type="checkbox"/> Registered	<input type="checkbox"/> Return Receipt for Merchandise	<input type="checkbox"/> Insured Mail	<input type="checkbox"/> C.O.D.
<input type="checkbox"/> Certified Mail	<input type="checkbox"/> Express Mail						
<input type="checkbox"/> Registered	<input type="checkbox"/> Return Receipt for Merchandise						
<input type="checkbox"/> Insured Mail	<input type="checkbox"/> C.O.D.						
<p>2. Article Number 7001 1940 0000 3535 4981</p> <p><i>(Transfer from service label)</i></p>							
<p>PS Form 3811, August 2001 Domestic Return Receipt 102595-02-M-1035</p>							

SENDER: COMPLETE THIS SECTION	COMPLETE THIS SECTION ON DELIVERY						
<p>■ Complete items 1, 2, and 3. Also complete item 4 if Restricted Delivery is desired.</p> <p>■ Print your name and address on the reverse so that we can return the card to you.</p> <p>■ Attach this card to the back of the mailpiece, or on the front if space permits.</p>	<p>A. Signature X <input type="checkbox"/> Agent <input type="checkbox"/> Addressee</p> <table border="1" style="width: 100%; border-collapse: collapse;"> <tr> <td style="width: 60%; padding: 2px;">B. Received by (<i>Printed Name</i>)</td> <td style="width: 40%; padding: 2px;">C. Date of Delivery</td> </tr> </table> <p>D. Is delivery address different from item 1? <input type="checkbox"/> Yes If YES, enter delivery address below: <input type="checkbox"/> No</p>	B. Received by (<i>Printed Name</i>)	C. Date of Delivery				
B. Received by (<i>Printed Name</i>)	C. Date of Delivery						
<p>1. Article Addressed to:</p> <p>Four Star Oil & Gas Attn: NOJV Manager P. O. Box 36366 Houston, TX 77236 gac:Schwerdtfeger "A" #3F</p>	<p>3. Service Type</p> <table style="width: 100%;"> <tr> <td><input type="checkbox"/> Certified Mail</td> <td><input type="checkbox"/> Express Mail</td> </tr> <tr> <td><input type="checkbox"/> Registered</td> <td><input type="checkbox"/> Return Receipt for Merchandise</td> </tr> <tr> <td><input type="checkbox"/> Insured Mail</td> <td><input type="checkbox"/> C.O.D.</td> </tr> </table> <p>4. Restricted Delivery? (<i>Extra Fee</i>) <input type="checkbox"/> Yes</p>	<input type="checkbox"/> Certified Mail	<input type="checkbox"/> Express Mail	<input type="checkbox"/> Registered	<input type="checkbox"/> Return Receipt for Merchandise	<input type="checkbox"/> Insured Mail	<input type="checkbox"/> C.O.D.
<input type="checkbox"/> Certified Mail	<input type="checkbox"/> Express Mail						
<input type="checkbox"/> Registered	<input type="checkbox"/> Return Receipt for Merchandise						
<input type="checkbox"/> Insured Mail	<input type="checkbox"/> C.O.D.						
<p>2. Article Number 7001 1940 0000 3535 4998</p> <p><i>(Transfer from service label)</i></p>							
<p>PS Form 3811, August 2001 Domestic Return Receipt 102595-02-M-1035</p>							