



*Cross reference DC-614*  
*MSA*  
**SHELL OIL COMPANY**

*20*  
*MSL-151*  
*(on existing record)*  
P. O. Box 845  
Roswell, N. M.  
*Due June 25, 1959*

May 29, 1958

Subject: Application for Administrative approval to dually complete Shell State (Section 2) 4 in the Tubb Gas Pool and the Drinkard Oil Pool, Lea County, New Mexico and produce said well at an Unorthodox location in the Tubb Gas Pool

New Mexico Oil Conservation Commission  
P. O. Box 871  
Santa Fe, New Mexico

Gentlemen:

By this letter of application, Shell Oil Company wishes to state the following:

1. Shell Oil Company's State (Section 2) 4, located 710 feet from the south line and 610 feet from the west line of Section 2-21S-37E, NMFM Survey, Lea County, New Mexico, was drilled to a total depth of 6718 feet and, on November 18, 1950, was completed as a Drinkard oil well in the open-hole (6536-6718 feet) below the 5 1/2-inch oil string.
2. State (Section 2) 4 was drilled at the abovementioned location to avoid drilling too near State (Section 2) 3, a former Brunson Field (Ellenburger) producer that was recently recompleted in the Hare Field (Connell).
3. Shell Oil Company holds leases on both the oil and gas rights under the subject well and the royalty interest for both oil and gas are held by a common party (the State of New Mexico).
4. Shell Oil Company proposes to dually complete State (Section 2) 4 to produce Drinkard oil and Tubb gas in the manner outlined on Attachments 1 and 2. The Drinkard and Tubb sections will be separated by a production packer and the Tubb gas will be produced through the casing-tubing annulus. The Drinkard oil will be produced through 2 3/8-inch tubing and Drinkard gas will be vented from below the packer through a 1-inch tubing string.
5. The proposed manner of completion and production is both mechanically feasible and practical.

6. The granting of this application to produce State (Section 2) 4 as a dual completion is in the interest of conservation and the protection of correlative rights.
7. By copy of this application, all offset operators have been notified of Shell Oil Company's proposed dual completion.

In view of the facts set out above, it is respectfully requested that the New Mexico Oil Conservation Commission enter an order approving the proposed dual completion.

Very truly yours,



P. A. Dennie  
Division Manager

Attachments (2)

cc: w/Attachments

New Mexico Oil Conservation Commission  
P. O. Box 2045  
Hobbs, New Mexico

\*Aztec Oil & Gas Company  
P. O. Box 845  
Hobbs, New Mexico

\*Continental Oil Company  
825 Petroleum Building  
Roswell, New Mexico

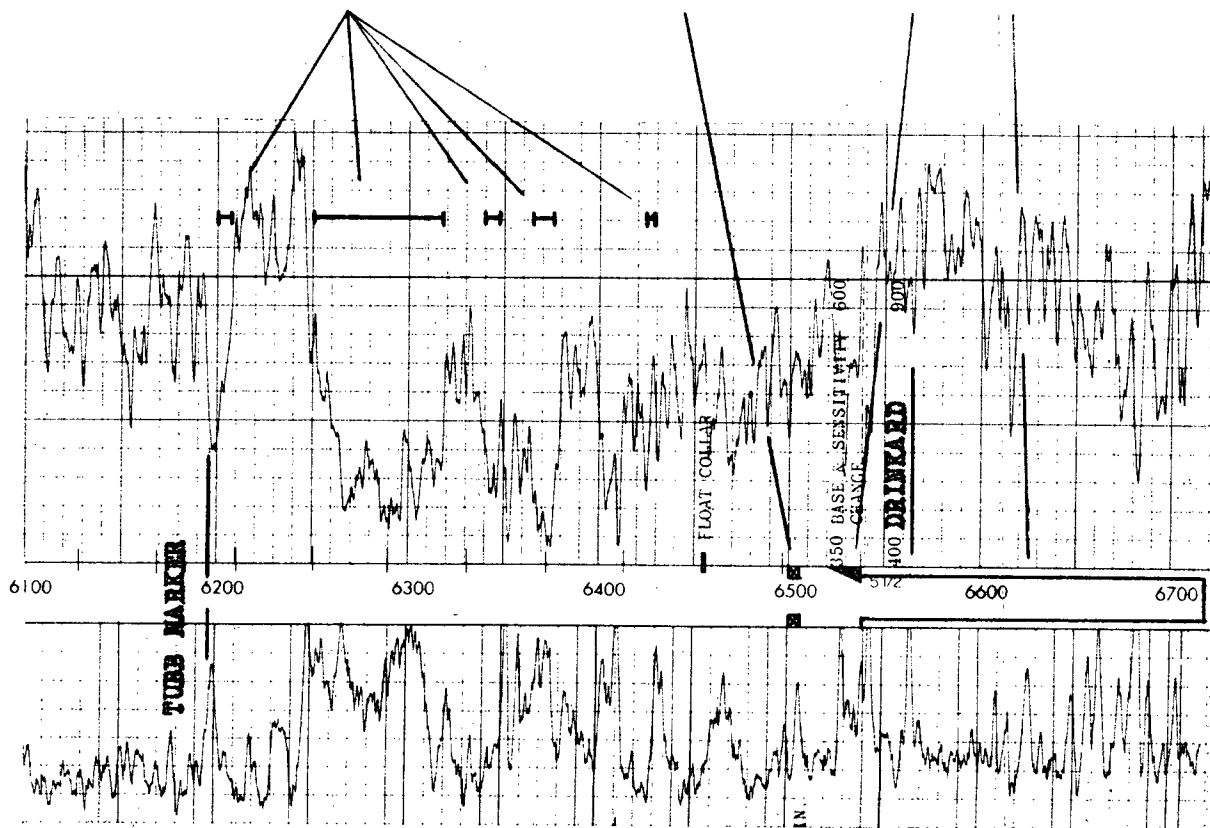
\*Gulf Oil Corporation  
Petroleum Building  
Roswell, New Mexico

\*Southern Union Gas Company  
Burt Building  
Dallas, Texas

\*Certified Mail

DUAL COMPLETION PROGRAM  
SHELL STATE (SECTION 2) 4  
Drinkard & Tubb Pools  
Lea County, New Mexico

RADIOACTIVITY SURVEY



1. Set temporary bridging plug @ 6520'
2. Perforate TUBB zone in selected intervals.
3. Treat TUBB with 1000 gal. Mud Cleanout Agent.
4. Fracture TUBB zone with 30,000 gal. oil
5. Drill out bridging plug and set production packer @ 6500'.
6. Install dual completion equipment as shown on Attachment 2.
7. Run production tests and communication tests.
8. Place on production.

Total Depth: 6718 feet

Attachment 1.

PROPOSED PRODUCTION EQUIPMENT  
FOR DUAL COMPLETION  
TUBB-DRINKARD  
STATE (SEC. 2) 4

