

Brooks, David K., EMNRD

From: John Allred [jallred@plantationpetro.com]
Sent: Thursday, January 04, 2007 4:28 PM
To: Brooks, David K., EMNRD
Subject: Re: Quapaw # 2 (Data)

Attachments: Quapaw and AB Reeves Leases.ppt



Quapaw and AB
Reeves Leases.pp...

David:

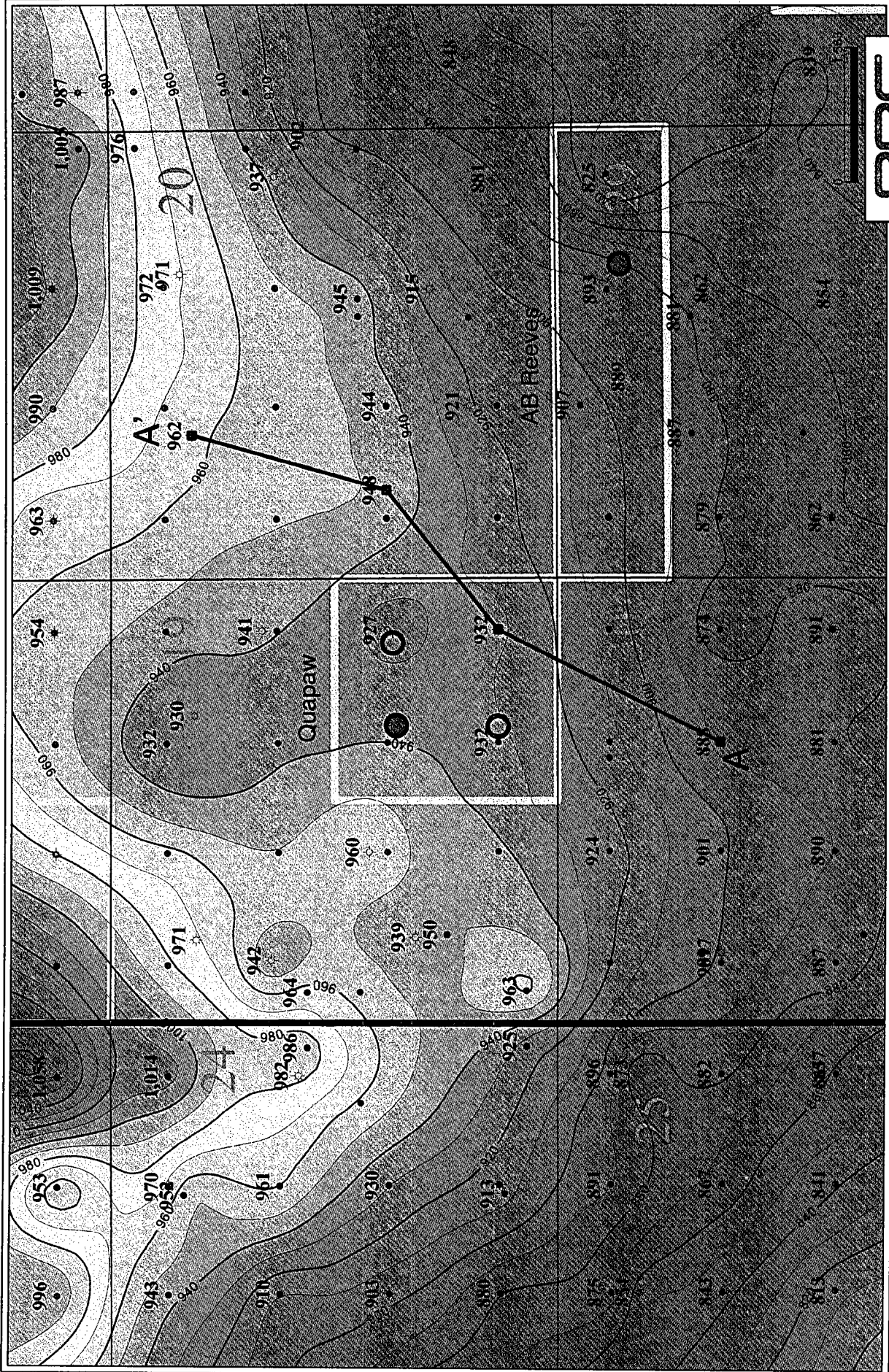
Re: Quapaw # 2 (Data)

As per our conversation today, attached is our supporting geological/engineering data for drilling the Quapaw # 2 for your approval & processing.

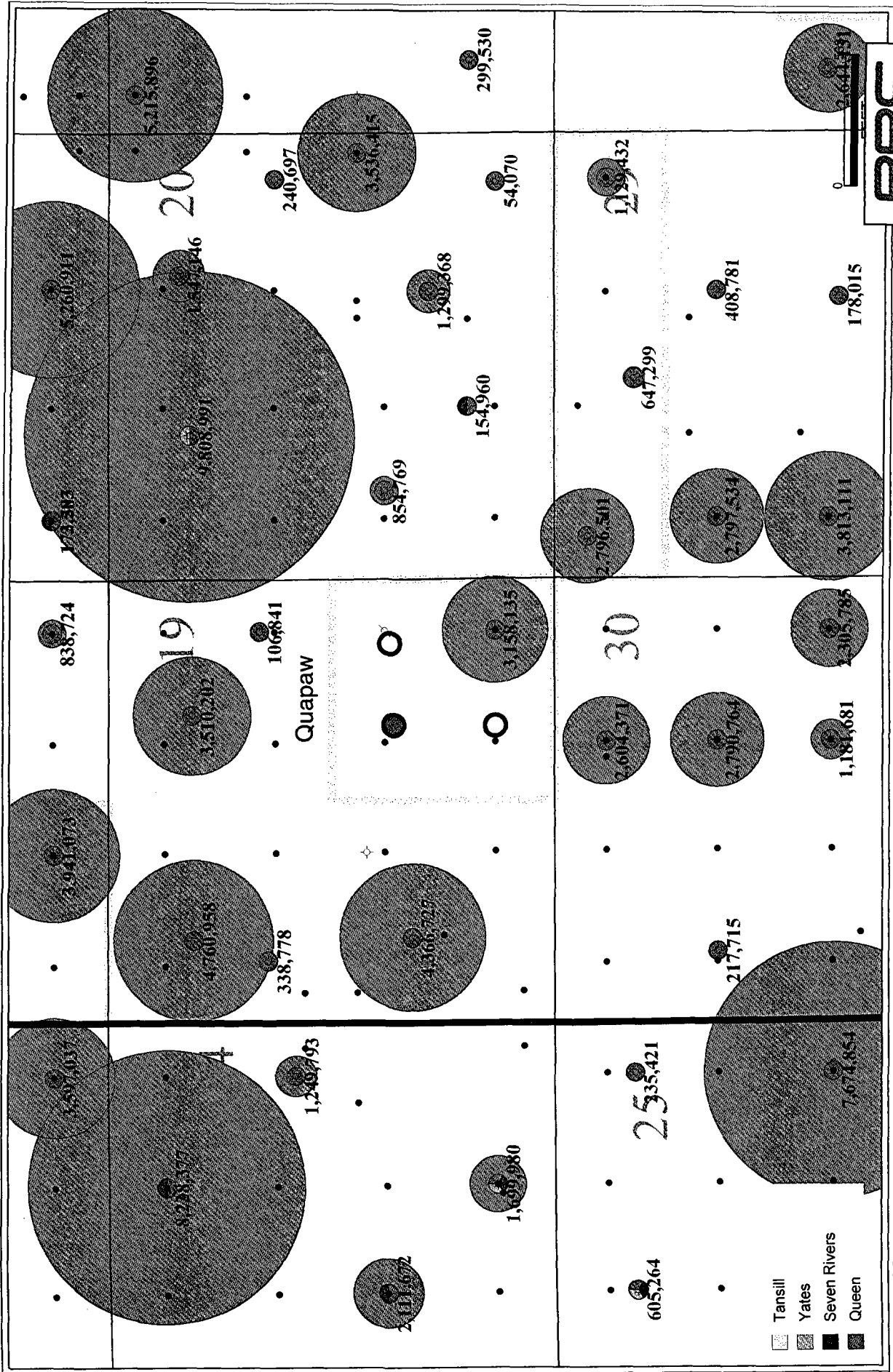
Regards,

John Allred, P.E.
Plantation Petroleum Companies
2203 Timberloch Place, Suite 229
The Woodlands, Texas 77380
(281) 296-7222 w
(281) 389-8832 m
(281) 298-2333 Fax

Quapaw Area – All Wells – Yates Structure Cl: 10'

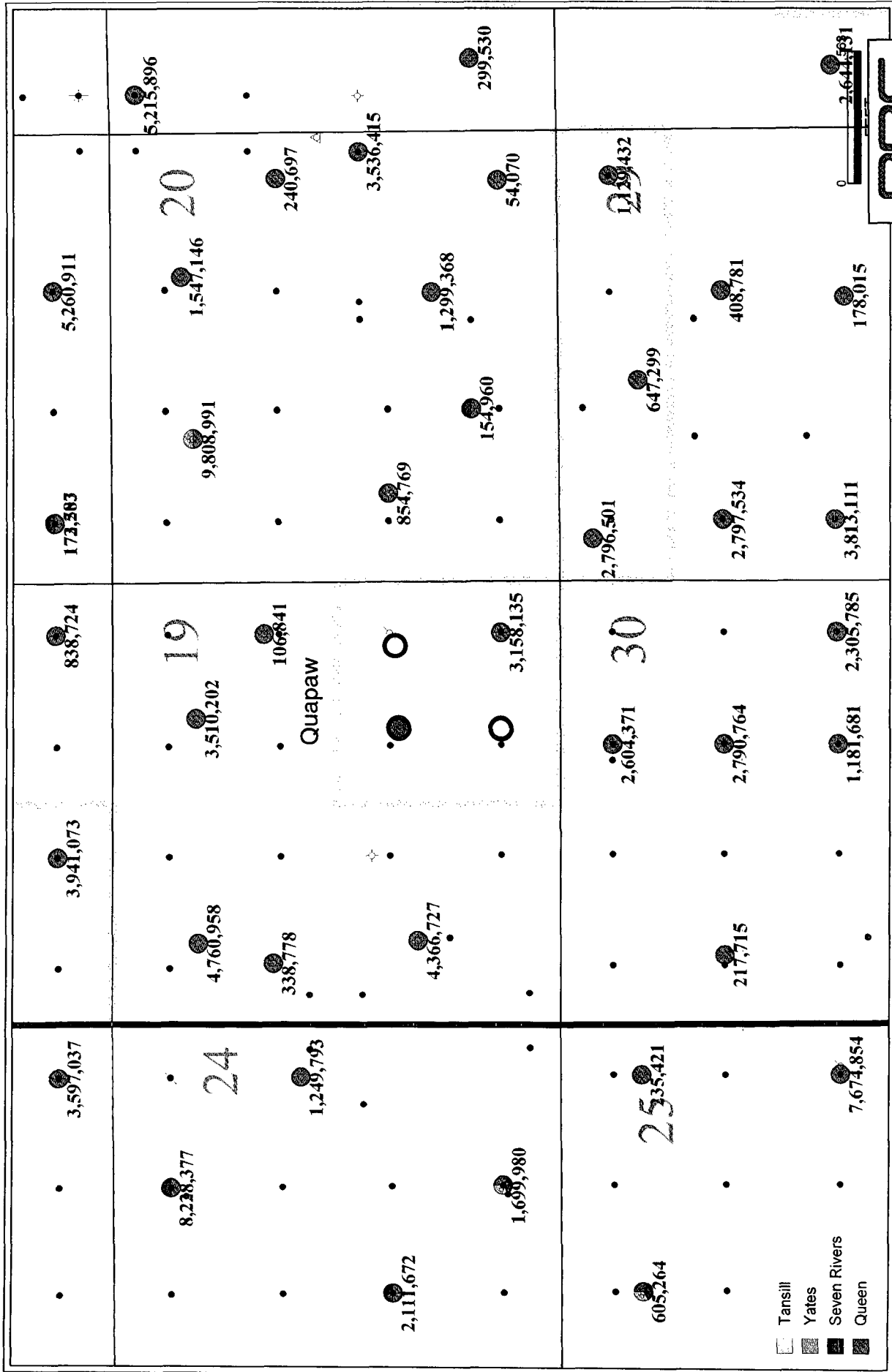


Quapaw Area – All Wells – Eumont Cum Bubble

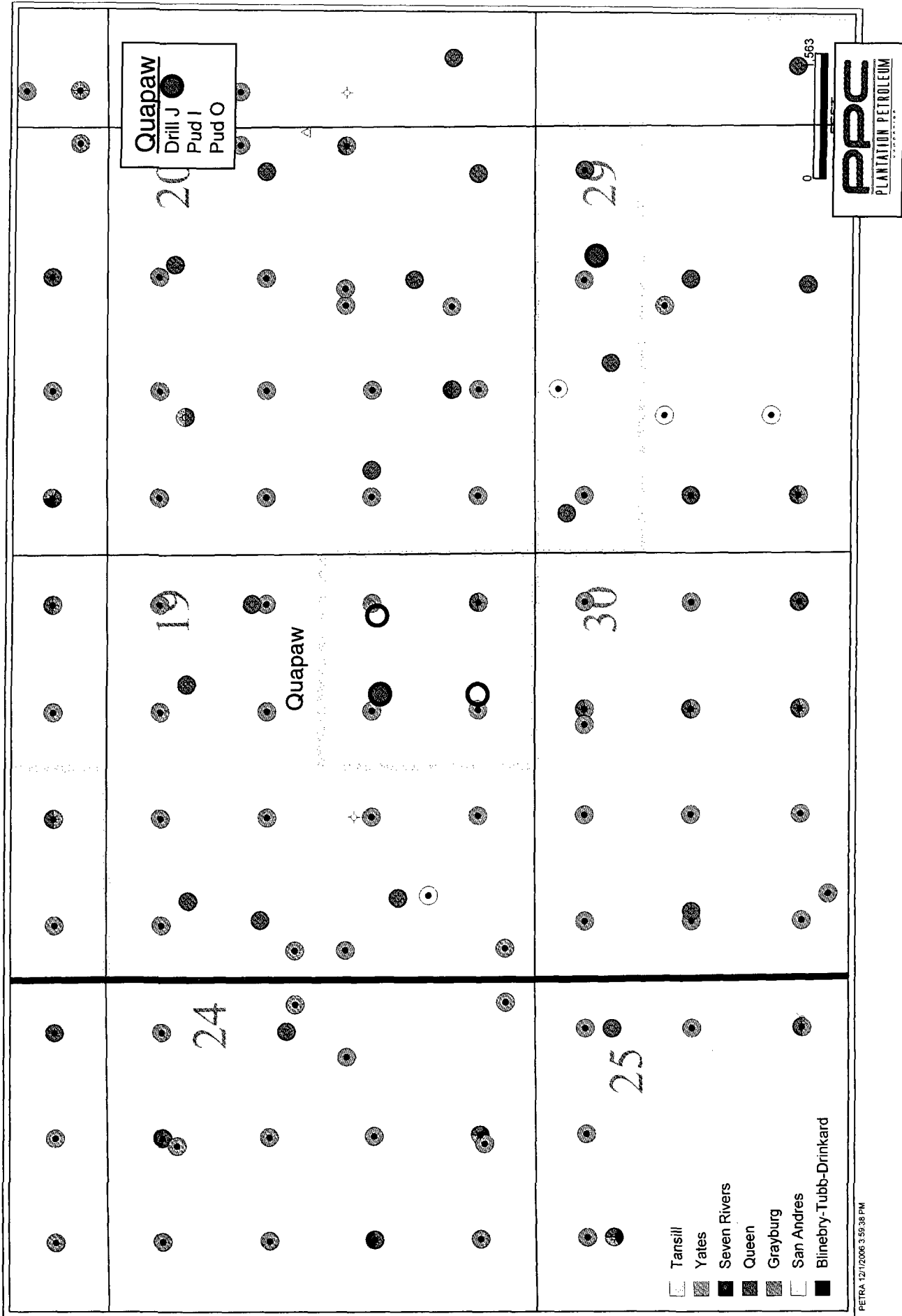


Tansill
 Yates
 Seven Rivers
 Queen

Quapaw Area – All Wells – Eumont Production



Quapaw Area – All Wells – Producing Formations



AMERADA HESS CORP
STATE W
2
EUNICE



A

PHILLIPS PETRIM CO
QUAPAW
1
EUNICE



O

TEXACO INCORPORATED
NW 1/4 SEC 18, T10N, R10E, S10E
31
EUMONT

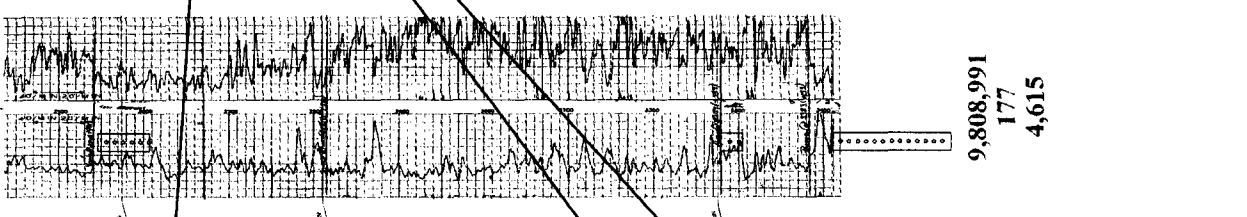
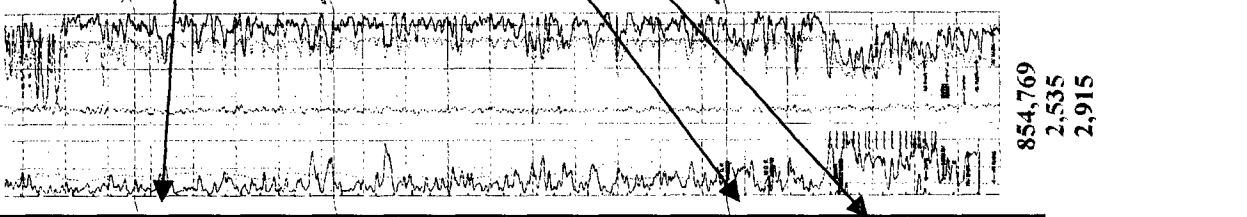
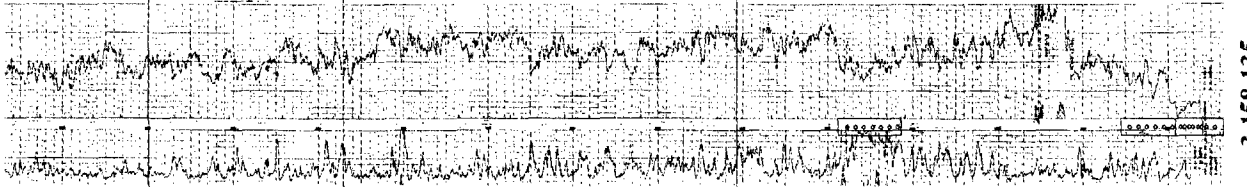
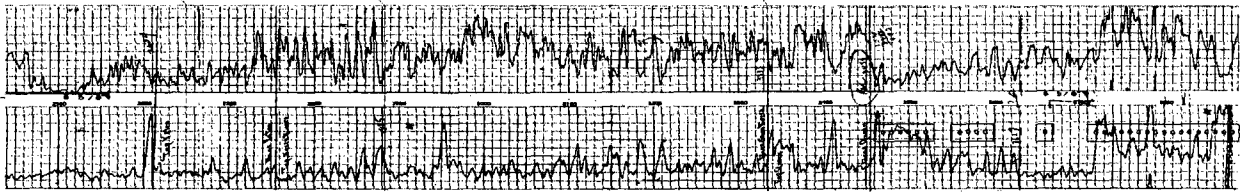


EUMONT

TEXACO INCORPORATED
STATE H NCT-2
26
EUMONT



A'



Top Yates

Top Seven Rivers

Top Queen

Potential zones to perforate in the Quapaw. There is a Zone at the top of the Queen that has been missed by a number of wells around the Quapaw.

9,808,991
177
4,615

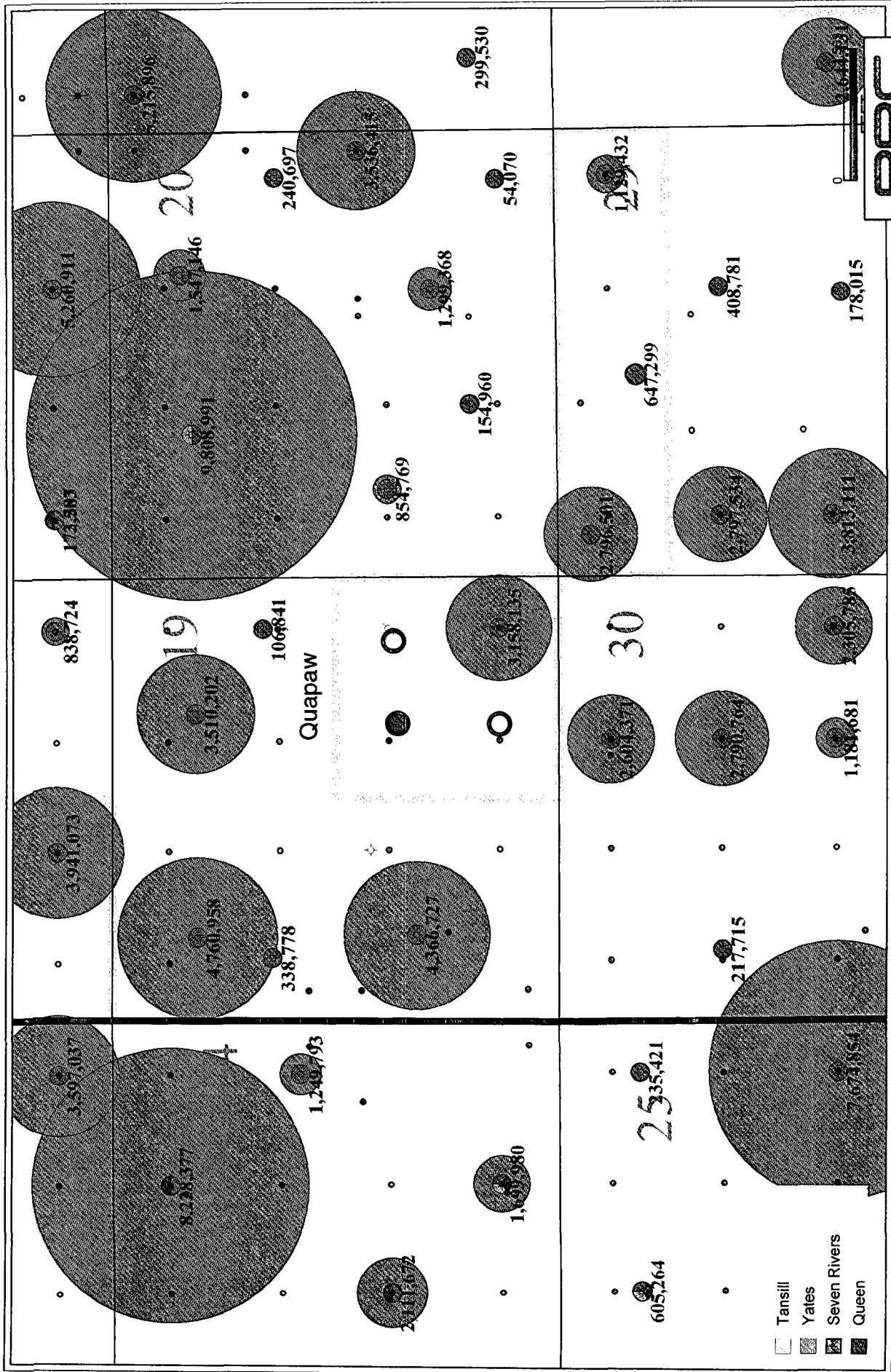
854,769
2,535
2,915

3,158,135

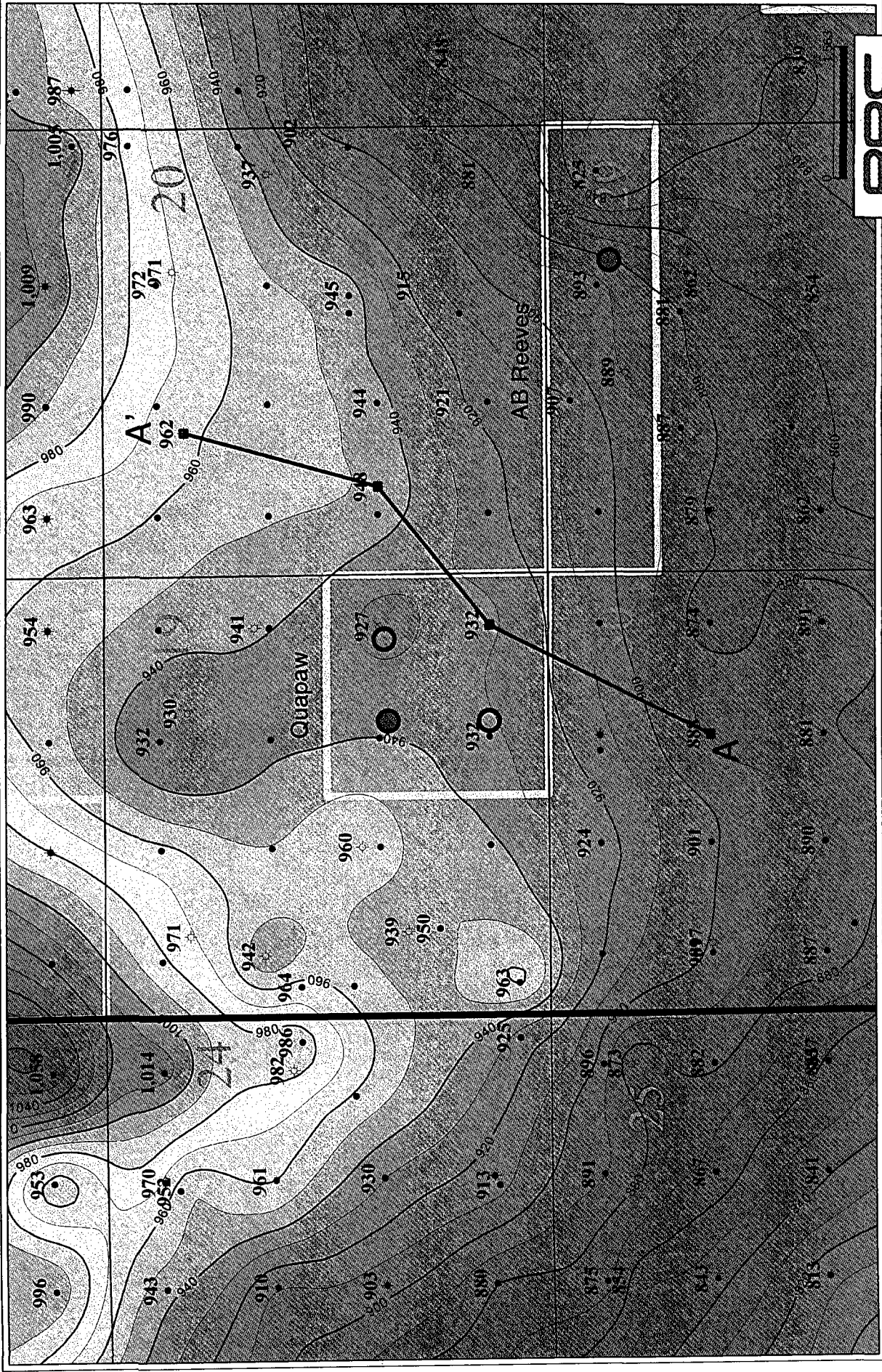
2,790,764



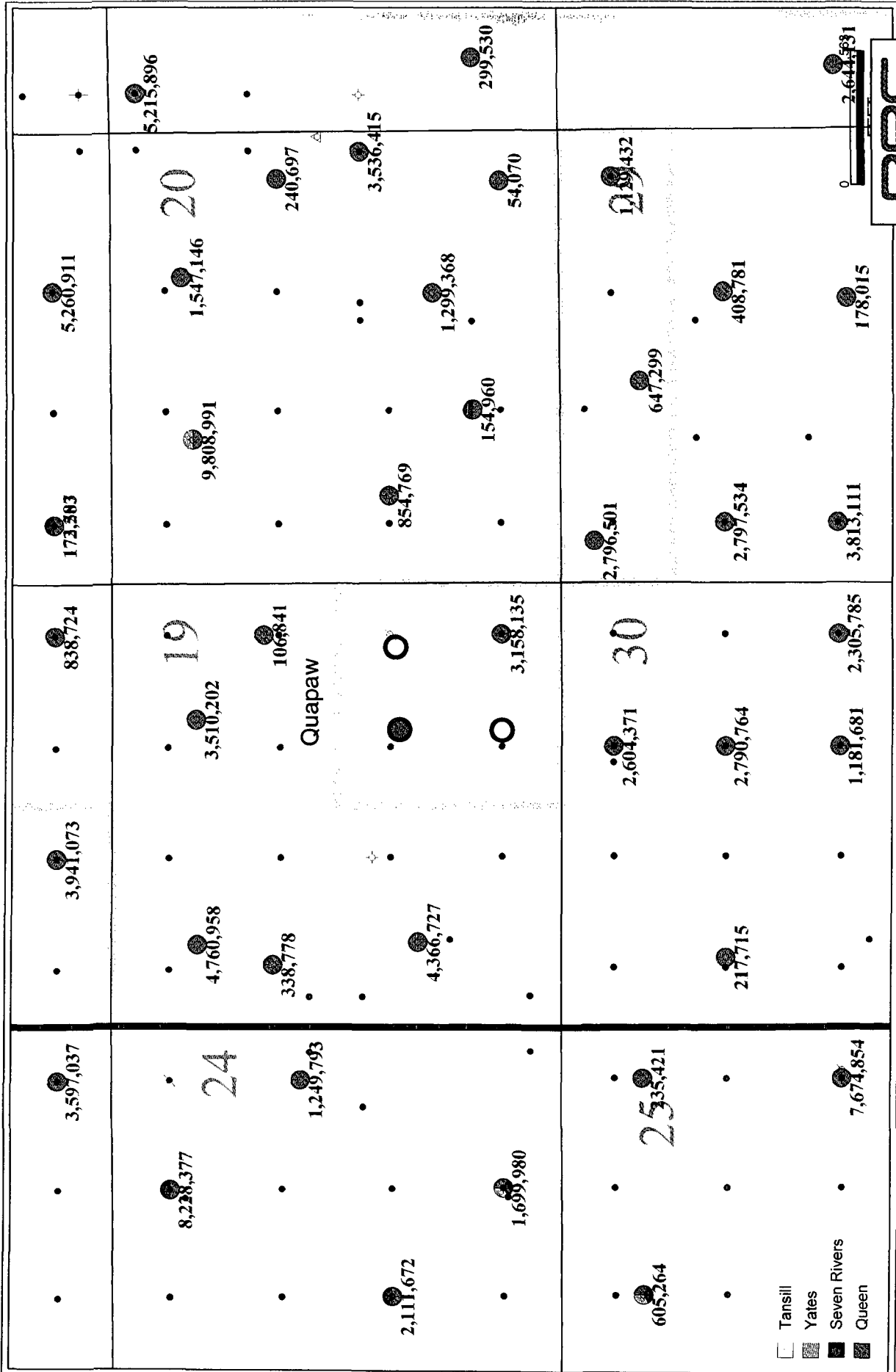
Quapaw Area – All Wells – Eumont Cum Bubble



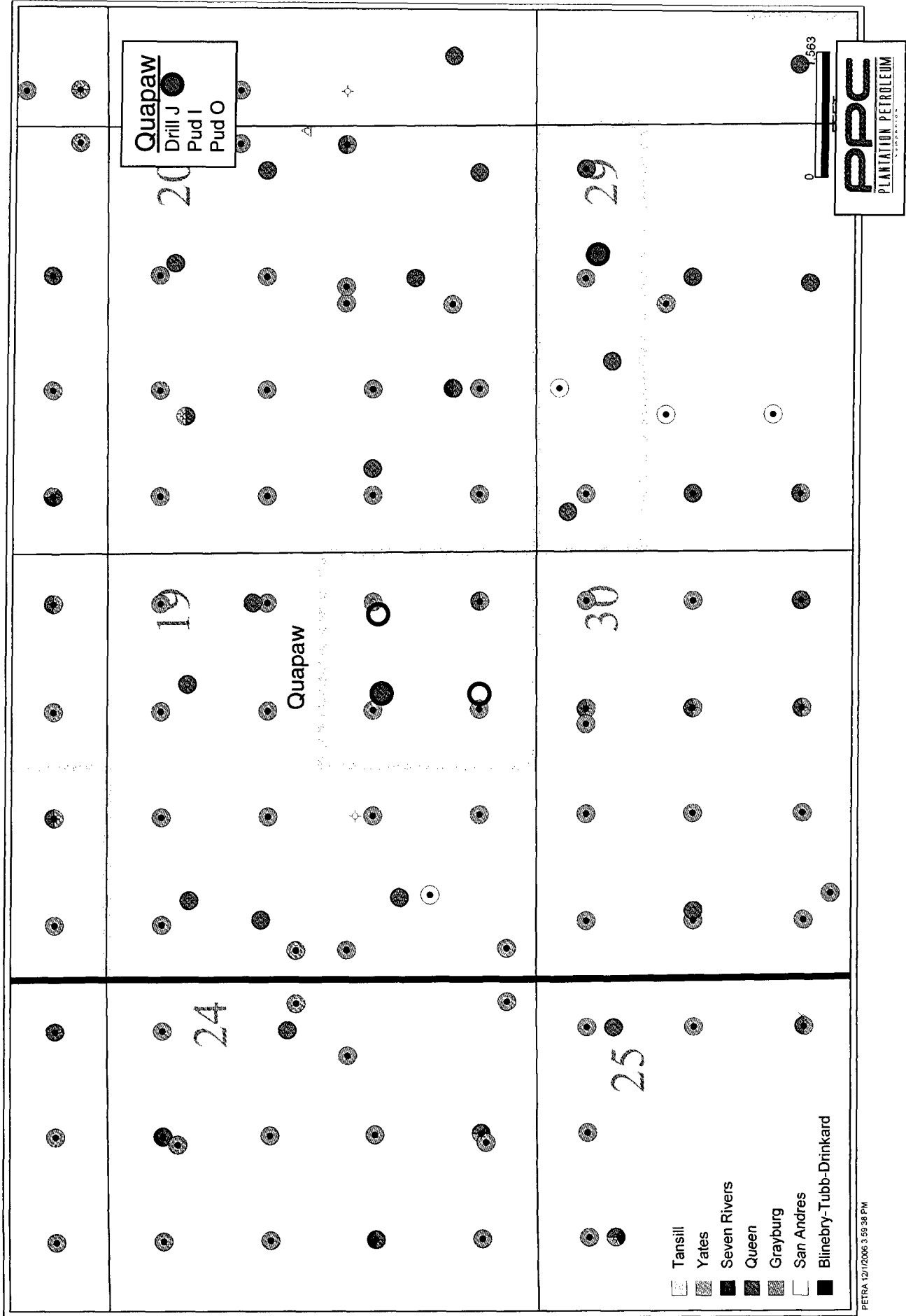
Quapaw Area – All Wells – Yates Structure CI: 10'



Quapaw Area – All Wells – Eumont Production



Quapaw Area – All Wells – Producing Formations



AMERADA HESS CORP
STATE W
EUNICE

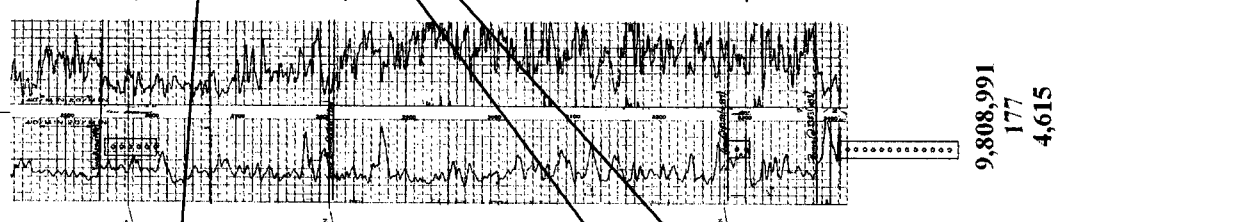
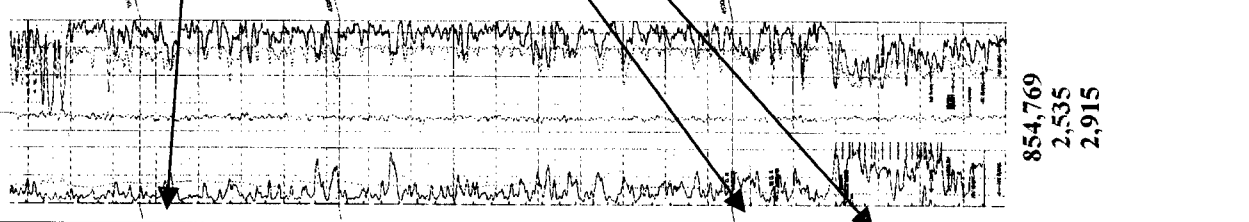
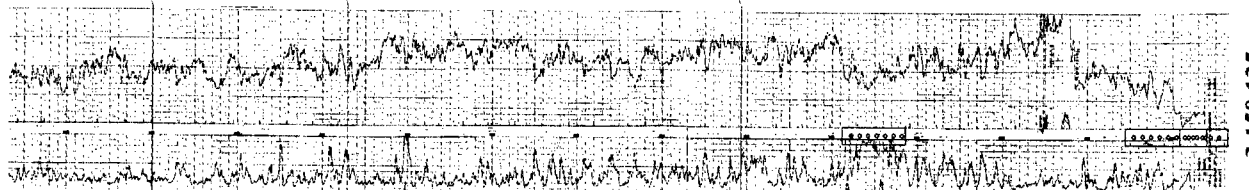
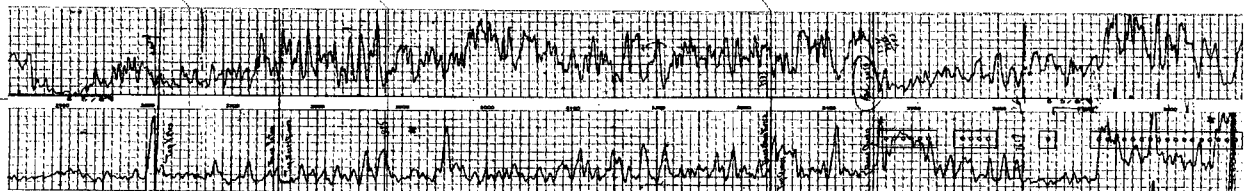
PHILLIPS PETROLEUM CO
QUAPAW
EUNICE

TEXACO INCORPORATED
NW 1/4 SEC 31 T10N R10E
EUNICE

TEXACO INCORPORATED
STATE H NCT-2
EUNICE

A

A'



Potential zones to perforate in the Quapaw. There is a Zone at the top of the Queen that has been missed by a number of wells around the Quapaw.

Top Yates

Top Seven Rivers

Top Queen

9,808,991
177
4,615

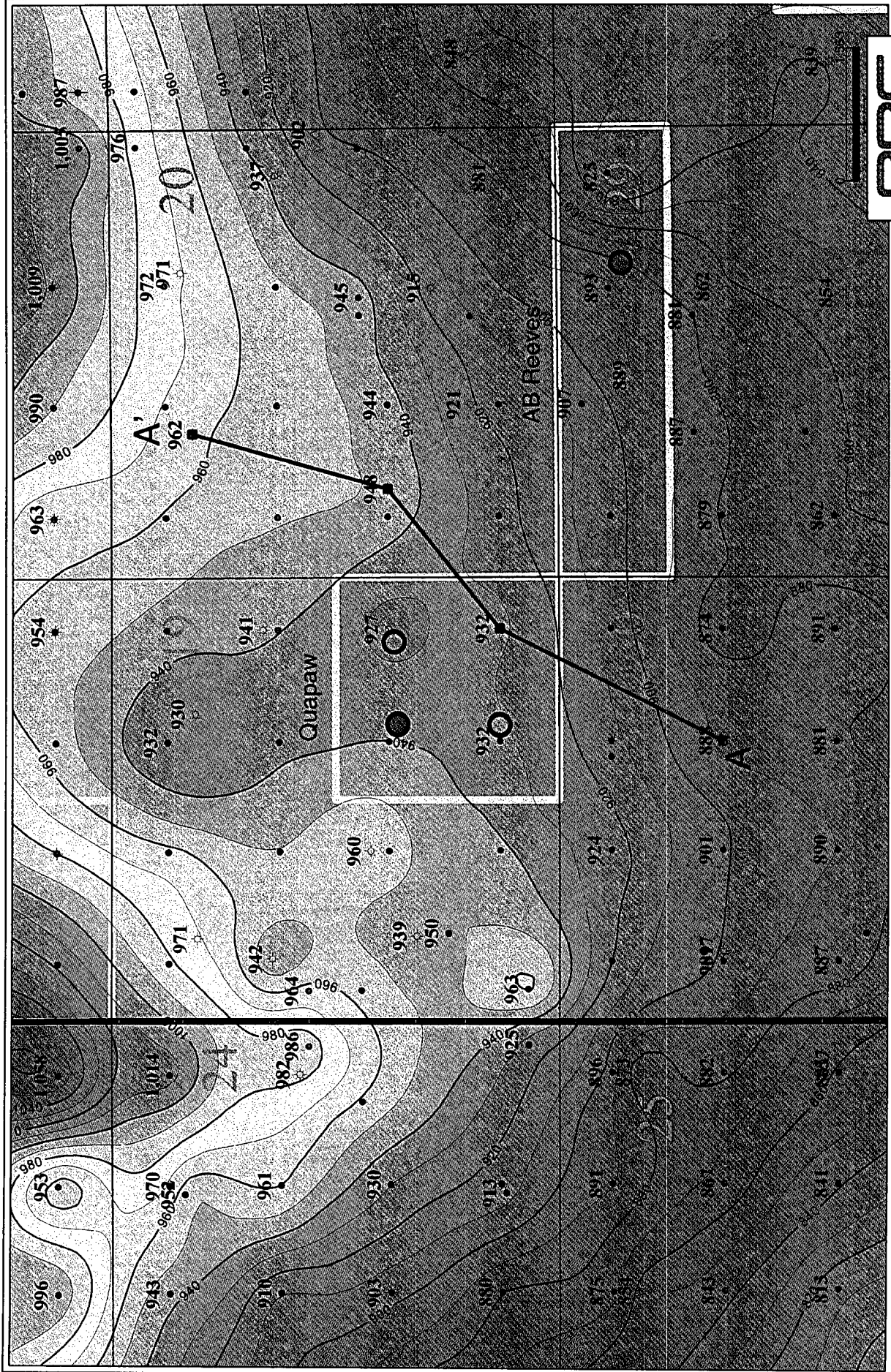
854,769
2,535
2,915

3,158,135

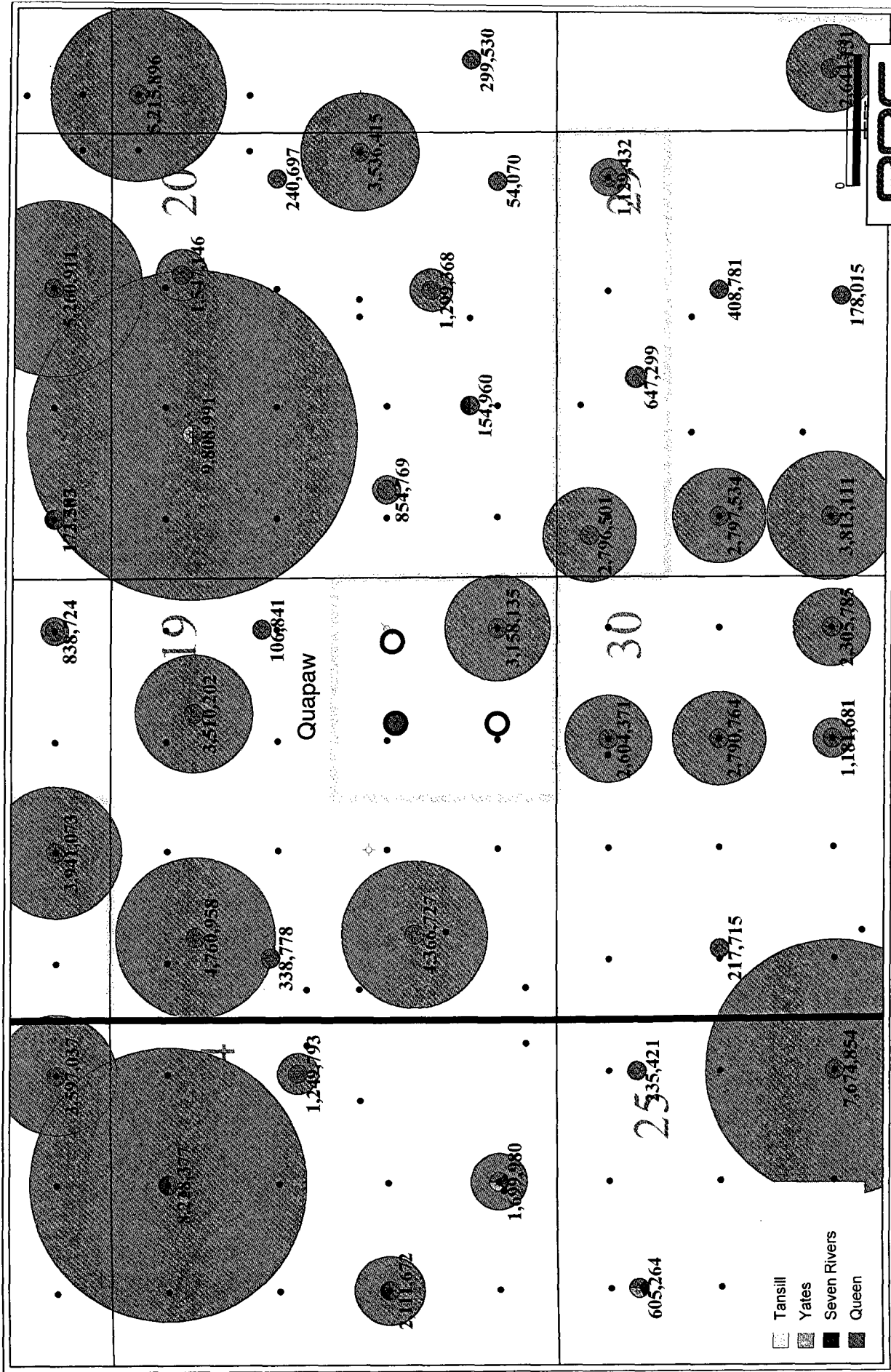
2,790,764



Quapaw Area – All Wells – Yates Structure CI: 10'

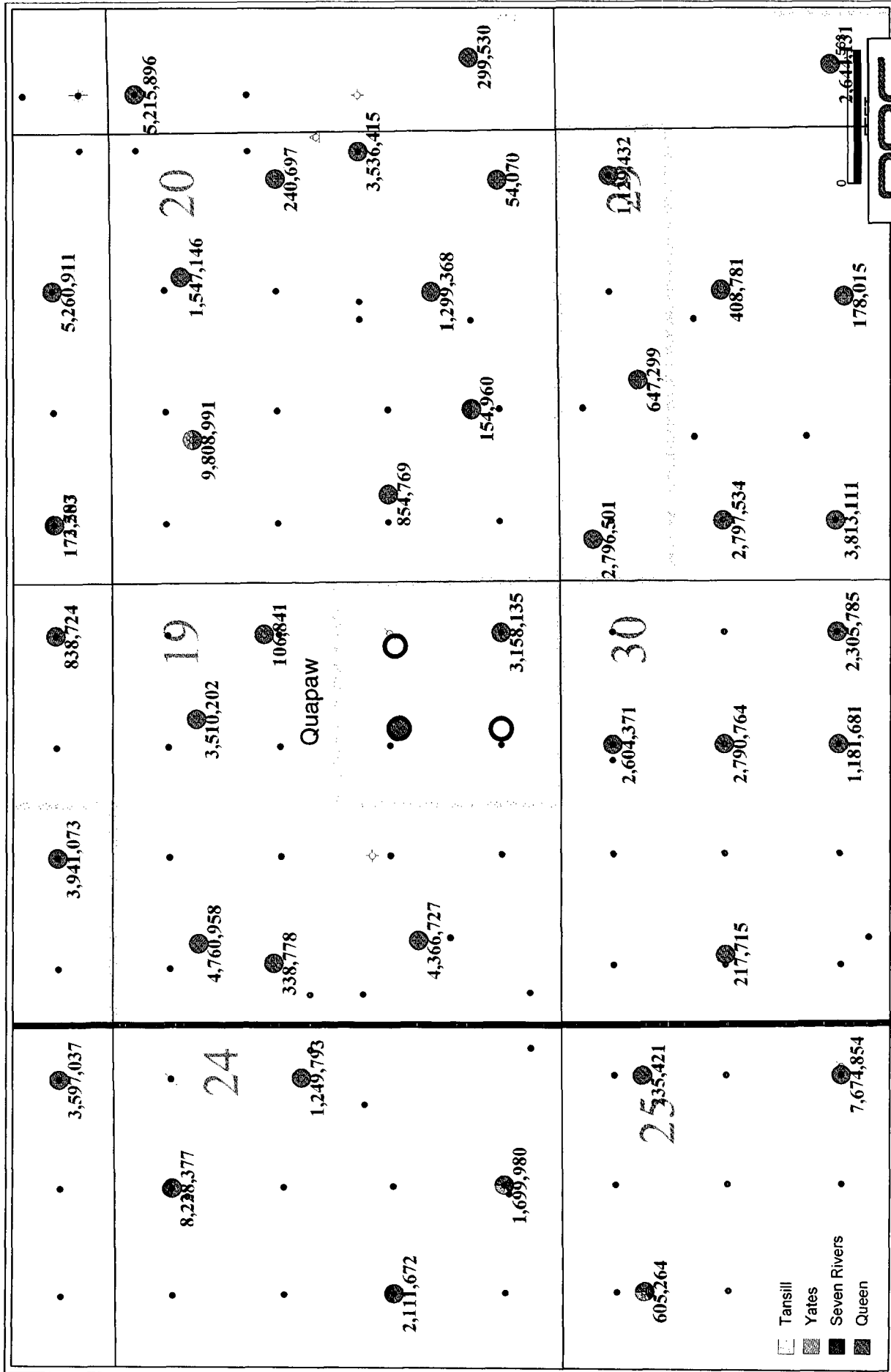


Quapaw Area – All Wells – Eumont Cum Bubble

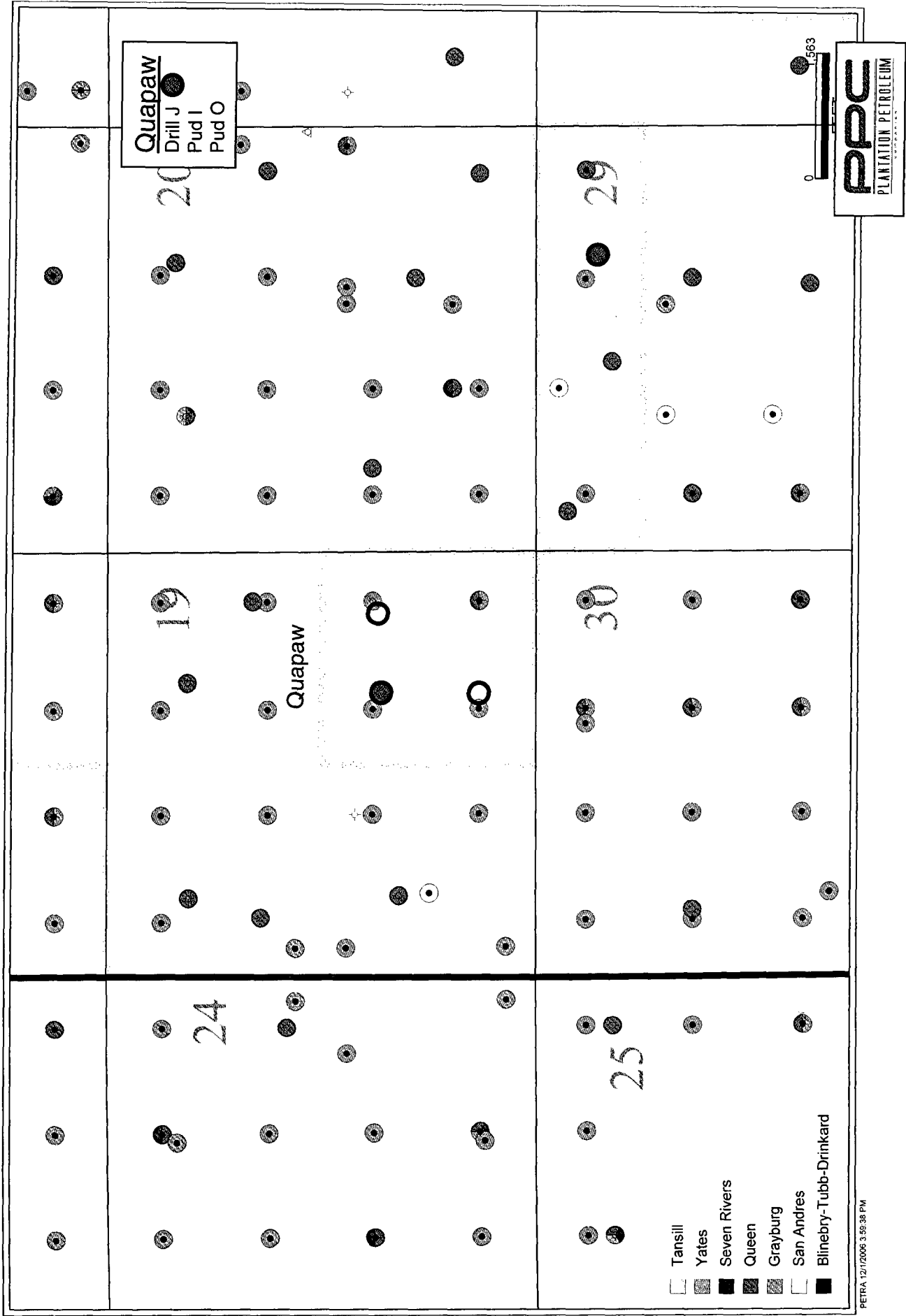


- Tansill
- Yates
- Seven Rivers
- Queen

Quapaw Area – All Wells – Eumont Production



Quapaw Area – All Wells – Producing Formations



AMERADA HESS CORP
STATE W
EUNICE
2



A

PHILLIPS PETROLEUM CO
QUAPAW
EUNICE
1



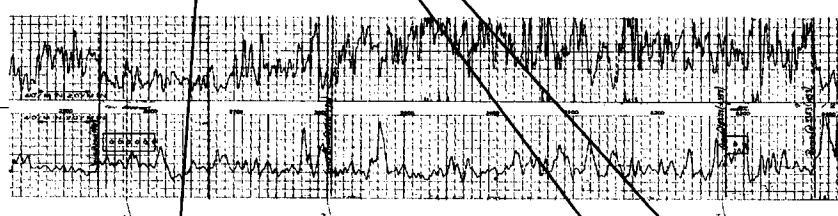
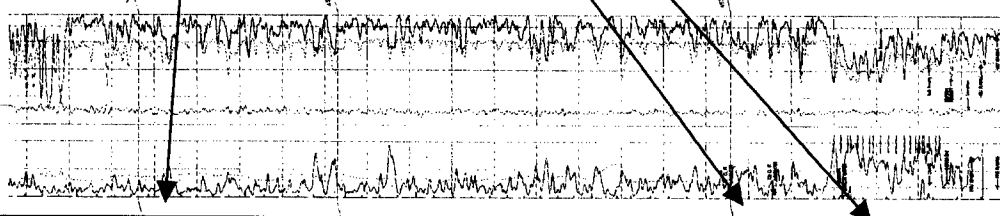
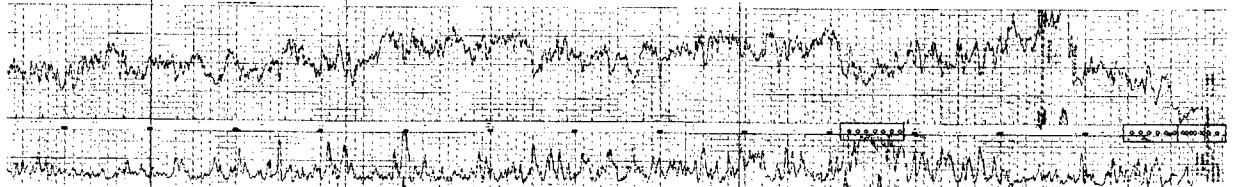
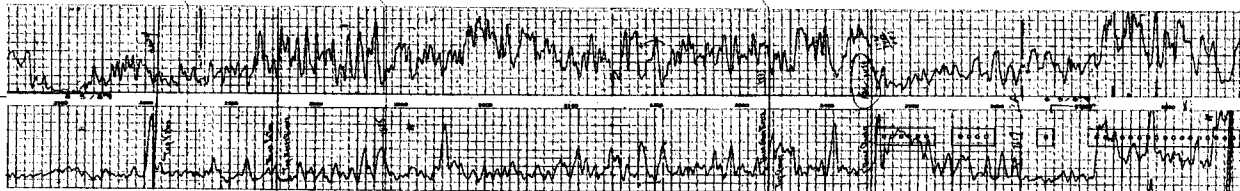
TEXACO INCORPORATED
NW 1/4 SEC 17 T10N R10E S10E
EUMONT
31



TEXACO INCORPORATED
STATE H NCT-2
EUMONT
26



A'



Top Yates

Top Seven Rivers

Top Queen

Potential zones to perforate in the Quapaw. There is a Zone at the top of the Queen that has been missed by a number of wells around the Quapaw.

9,808,991
177
4,615

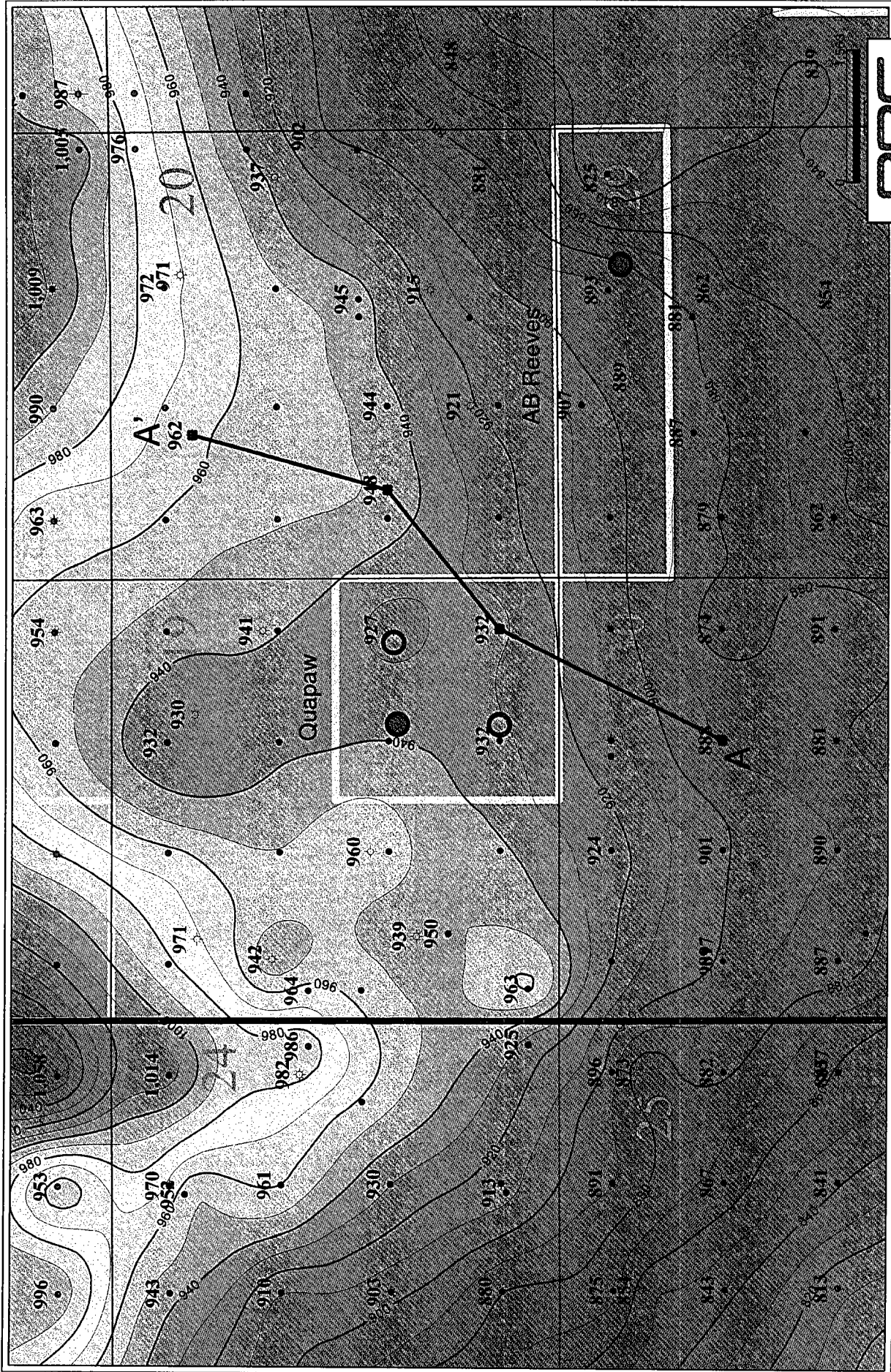
854,769
2,535
2,915

3,158,135

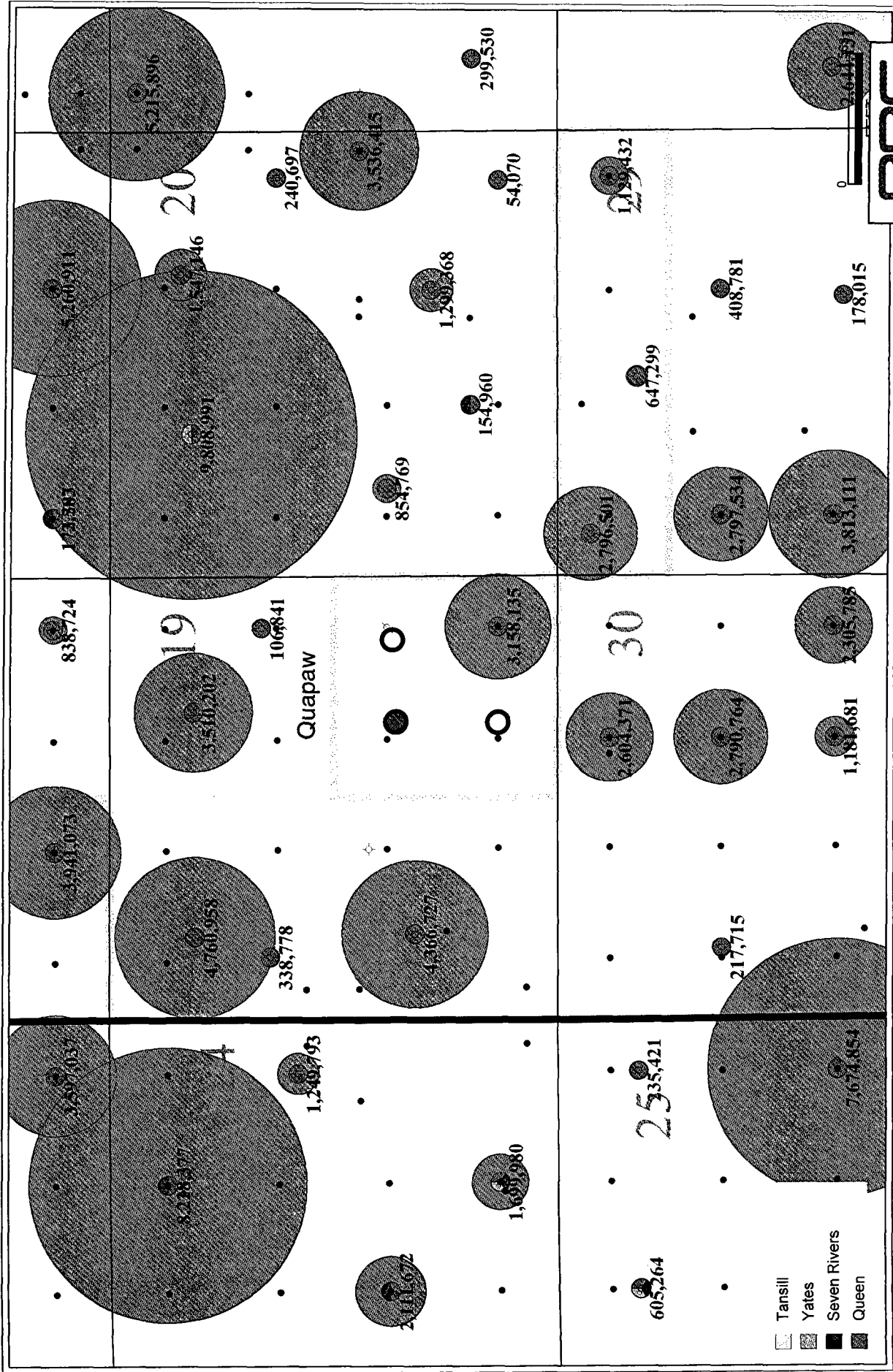
2,790,764



Quapaw Area – All Wells – Yates Structure CI: 10'



Quapaw Area – All Wells – Eumont Cum Bubble



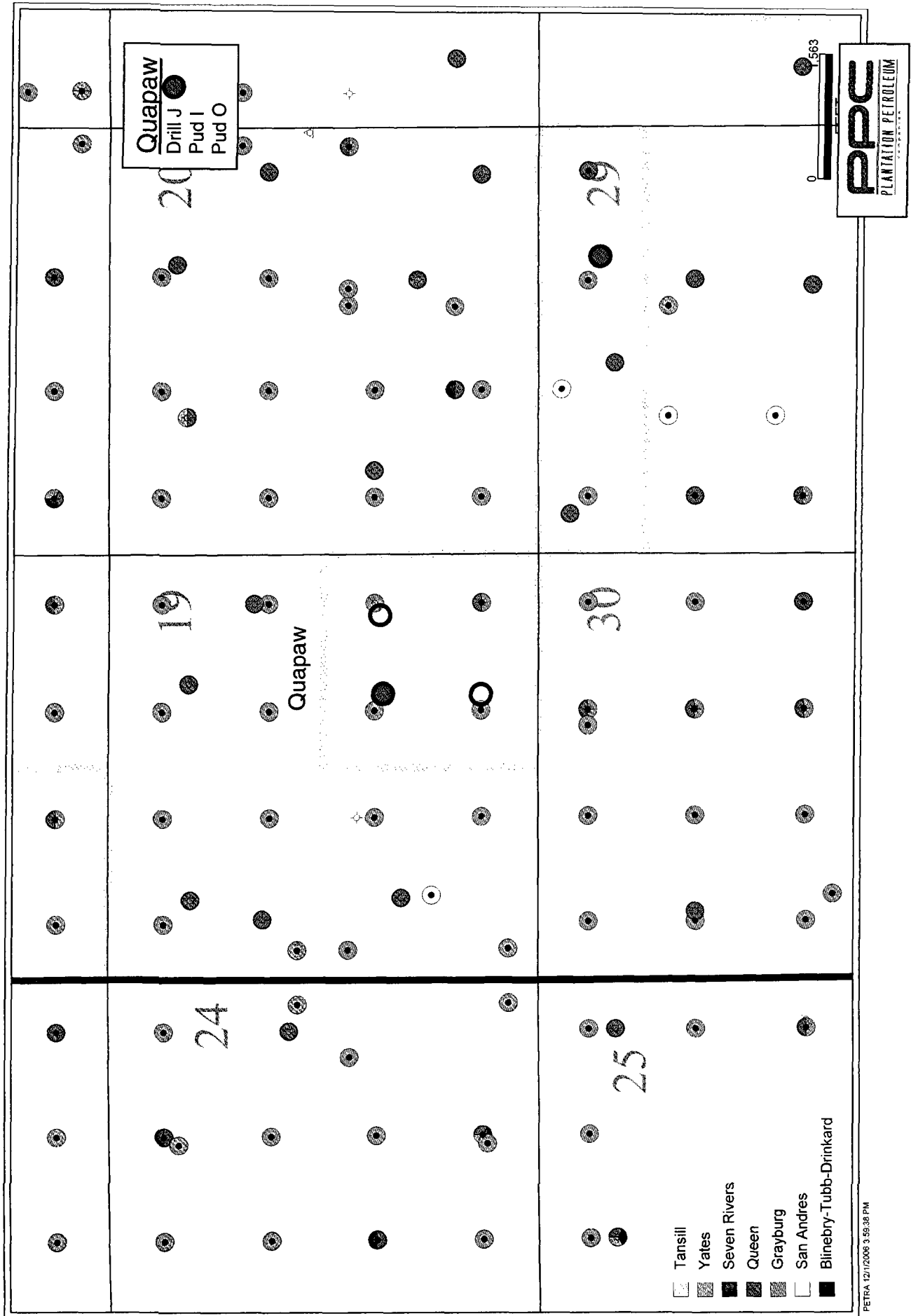
Quapaw Area – All Wells – Eumont Production

• 3,597,037	• 3,941,073	• 838,724	• 173,383
• 8,228,377 24	• 4,760,958 19	• 3,510,202 20	• 1,547,146 20
• 1,249,793	• 338,778 Quapaw	• 106,841	• 9,808,991 240,697
• 2,111,672	• 4,366,727	• 854,769	• 3,536,415
• 1,699,980	• 3,158,135	• 1,299,368	• 54,070 299,530
• 605,264 25	• 2,604,371 30	• 2,796,501 25,432	• 647,299
• 7,674,854	• 217,715	• 2,790,764	• 408,781
• 7,674,854	• 1,181,681	• 2,305,785	• 3,813,111 178,015

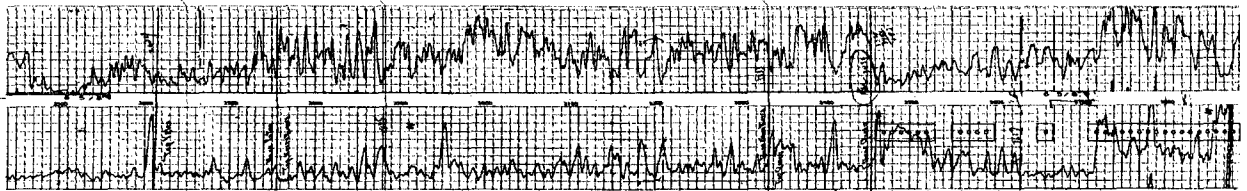
- Tansill
- Yates
- Seven Rivers
- Queen



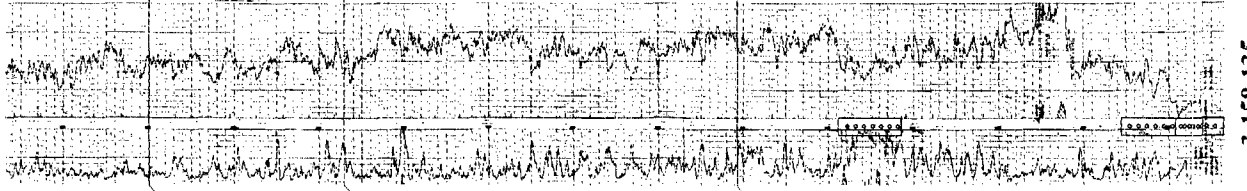
Quapaw Area – All Wells – Producing Formations



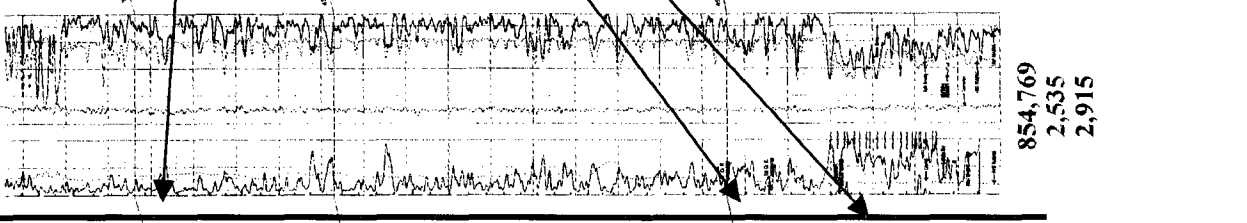
AMERADA HESS CORP
STATE W
EUNICE
2



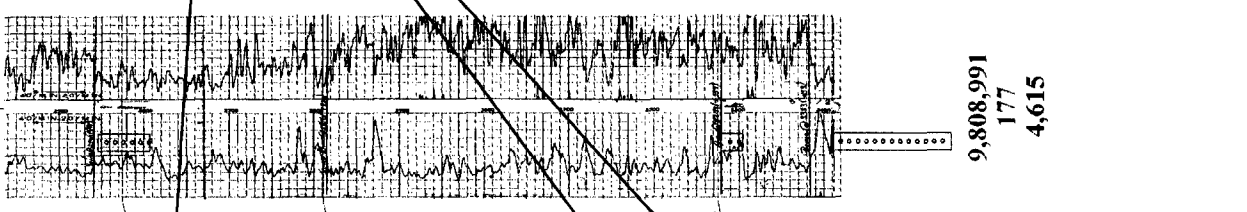
PHILLIPS PETROL CO
QUAPAW
EUNICE
1



TENACO INCORPORATED
NW 1/4 SEC 31 T10N R10E S10E
EUMONT
31



TENACO INCORPORATED
STATE H NCT-2
EUMONT
26



A'

Top Yates

Top Severn Rivers

Top Queen

Potential zones to perforate in the Quapaw. There is a Zone at the top of the Queen that has been missed by a number of wells around the Quapaw.

9,808,991
177
4,615

854,769
2,535
2,915

3,158,135

2,790,764

