

District I
1625 N. French Dr., Hobbs, NM 88240
District II
1301 W. Grand Avenue, Artesia, NM 88210
District III
1000 Rio Brazos Road, Aztec, NM 87410
District IV
1220 S. St. Francis Dr., Santa Fe, NM 87505

State of New Mexico
Energy Minerals and Natural Resources

Oil Conservation Division
1220 South St. Francis Dr.
Santa Fe, NM 87505

1R-0453

Form C-141
Revised October 10, 2003

Submit 2 Copies to appropriate
District Office in accordance
with Rule 116 on back
side of form

Release Notification and Corrective Action

OPERATOR

☐ Initial Report **XX** Final Report

Name of Company	Plains Marketing, L. P.	Contact	Camille Reynolds
Address	3112 W. US Hwy 82, Lovington, NM 88260	Telephone No.	(505) 441-0965
Facility Name	Saunders 8" # 4	Facility Type	8" Steel Pipeline
Surface Owner	Norman Hahn	Mineral Owner	
		Lease No.	

LOCATION OF RELEASE

Unit Letter	Section	Township	Range	Feet from the	North/South Line	Feet from the	East/West Line	County
F	35	13S	33E					Lea

Latitude 32° 08' 55.6" North Longitude 103° 35' 15.3" West.

NATURE OF RELEASE

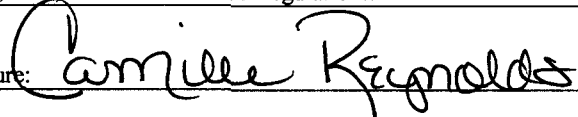
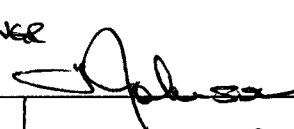
Type of Release	Crude Oil	Volume of Release	15 barrels	Volume Recovered	0 barrels
Source of Release	8-inch Steel Pipeline	Date and Hour of Occurrence	12 August 2004 @ 0600	Date and Hour of Discovery	12 August 2004 @ 1345
Was Immediate Notice Given?	XX Yes <input type="checkbox"/> No <input type="checkbox"/> Not Required	If YES, To Whom?	Larry Johnson		
By Whom?	Camille Reynolds	Date and Hour	12 August 2004 @ 1900		
Was a Watercourse Reached?	<input type="checkbox"/> Yes XX <input type="checkbox"/> No	If YES, Volume Impacting the Watercourse.			

If a Watercourse was Impacted, Describe Fully.*

Describe Cause of Problem and Remedial Action Taken.* External corrosion of the 8-inch steel pipeline resulted in a release of sour crude oil. A clamp was installed on the line to mitigate the release. The line is an 8-inch steel transmission pipeline that produces approximately 1,400 barrels of crude per day. The pressure on the line varies from 25 to 30 psi and the gravity of the sour crude oil is 38-42. The sour crude has an H2S content of <10 ppm. The line was approximately 1.5 feet bgs at the release point.

Describe Area Affected and Cleanup Action Taken.* One (1) groundwater sampling event was conducted in the fourth quarter of 2005. Four (4) consecutive groundwater sampling events were conducted in 2006. Laboratory results of the five (5) groundwater sampling events indicated groundwater was not impacted at the Saunders 8" # 4 release site. **Plains requests approval to plug & abandon the three (3) groundwater monitoring wells on-site in accordance with NMOCD guidelines.**
SEE ATTACHED PLAINS MARKETING, L. P., ANNUAL GROUNDWATER REPORT, DATED JANUARY 2007, FOR DETAILS OF THE GROUNDWATER SAMPLING EVENTS CONDUCTED IN CALENDAR YEAR 2006.
DTW: 83 TO 84 FEET BGS

I hereby certify that the information given above is true and complete to the best of my knowledge and understand that pursuant to NMOCD rules and regulations all operators are required to report and/or file certain release notifications and perform corrective actions for releases, which may endanger public health or the environment. The acceptance of a C-141 report by the NMOCD marked as "Final Report" does not relieve the operator of liability should their operations have failed to adequately investigate and remediate contamination that pose a threat to ground water, surface water, human health or the environment. In addition, NMOCD acceptance of a C-141 report does not relieve the operator of responsibility for compliance with any other federal, state, or local laws and/or regulations.

Signature: 		OIL CONSERVATION DIVISION	
Printed Name: Camille Reynolds		Approved by District Supervisor: 	
Title: Remediation Coordinator		Approval Date: <u>1-18-07</u>	Expiration Date: <u>-</u>
E-mail Address: <u>cjreynolds@paalp.com</u>		Conditions of Approval:	
Date: <u>18 January 2007</u> Phone: <u>(505) 441-0965</u>		Attached <input type="checkbox"/>	

* Attach Additional Sheets If Necessary

Basin Environmental Service Technologies, LLC

P. O. Box 301
Lovington, New Mexico 88260
kdutton@basinenv.com
Office: (505) 396-2378 Fax: (505) 396-1429

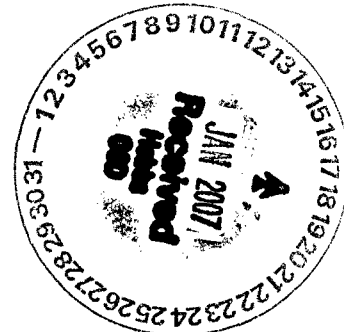


2006 ANNUAL MONITORING REPORT

**SAUNDERS 8" # 4
SE ¼ NW ¼ SECTION 35, TOWNSHIP 13 SOUTH, RANGE 33 EAST
LATITUDE 33°, 08', 55.6" NORTH, LONGITUDE 103°, 35', 15.3" WEST
LEA COUNTY, NEW MEXICO
PLAINS EMS NUMBER: 2004-00184
NMOCD REF: 1R-0453**

PREPARED FOR:

**PLAINS MARKETING, L.P.
333 CLAY STEET, SUITE 1600
HOUSTON, TEXAS 77002**



PREPARED BY:

**BASIN ENVIRONMENTAL SERVICE TECHNOLOGIES, LLC
P. O. Box 301
Lovington, New Mexico 88260**

January 2007



Ken Dutton
Project Manager

TABLE OF CONTENTS

INTRODUCTION.....	1
SITE DESCRIPTION AND BACKGROUND INFORMATION.....	1
FIELD ACTIVITIES.....	2
LABORATORY RESULTS.....	2
SUMMARY.....	3
ANTICIPATED ACTIONS.....	3
LIMITATIONS.....	3
DISTRIBUTION.....	5

FIGURES

Figure 1 – Site Location Map

Figure 2A – Inferred Groundwater Gradient Map – 24 March 2006

Figure 2B – Inferred Groundwater Gradient Map – 09 June 2006

Figure 2C – Inferred Groundwater Gradient Map – 14 September 2006

Figure 2D – Inferred Groundwater Gradient Map – 27 December 2006

Figure 3A – Groundwater Concentration Map – 24 March 2006

Figure 3B – Groundwater Concentration Map – 09 June 2006

Figure 3C – Groundwater Concentration Map – 14 September 2006

Figure 3D – Groundwater Concentration Map – 27 December 2006

TABLES

Table 1 – Groundwater Elevation Data

Table 2 – Concentrations of Benzene and BTEX in Groundwater

APPENDICES

Appendix A – Laboratory Reports

Appendix B – Release Notification and Corrective Action (Form C-141)

INTRODUCTION

Basin Environmental Service Technologies, LLC, (Basin) on behalf of Plains Marketing, L.P., (Plains), prepared this annual report in compliance with the New Mexico Oil Conservation Division (NMOCD) letter of May 1998, requiring submittal of an annual report by April 1 of each year. This report is intended to be viewed as a complete document with text, figures, tables, and appendices. This report presents the results of the quarterly groundwater monitoring events conducted in calendar year 2006 only. Additional site activities and remedial work is summarized in several letters and reports previously submitted to the NMOCD. For reference, the Site Location Map is provided as Figure 1.

Groundwater monitoring was conducted during the four (4) consecutive quarters of 2006 at the request of the NMOCD to assess the potential for impact to the groundwater from dissolved phase constituents. The groundwater monitoring event consisted of measuring static water levels in the monitoring wells, checking for the presence of phase-separated hydrocarbons (PSH) atop the water column, and purging and sampling of each well exhibiting sufficient recharge.

SITE DESCRIPTION AND BACKGROUND INFORMATION

The legal description of the site is SE ¼ NW ¼ Section 35, Township 13 South, Range 33 East. The site latitude is 32° 08' 55.6" North and the site longitude is 103° 35' 15.3" West. On 12 August 2004, Basin responded to the pipeline release on behalf of Plains to repair the pipeline and excavate the impacted soil. The Saunders 8" #4 Pipeline was subsequently de-oiled, cold cut and capped. Approximately 15 barrels of crude oil were released from the Plains Pipeline and 0 barrels were recovered. The site is characterized by a right-of-way for the pipeline in a pasture utilized for cattle grazing. The initial visibly surface stained area included the release point covering an area approximately 128 feet long by 89 feet wide. Excavation activities during the emergency response and subsequent remediation of the site covered an area approximately 198 feet long by 194 feet wide and ranged from approximately 12 to 22 feet below ground surface (bgs), respectively. Excavated soil was placed on a 6-mil poly-liner for future remedial action.

A Revised Preliminary Site Investigation Report and Remediation Plan, dated 19 July 2005, was submitted and approved by NMOCD, Santa Fe. The approved plan included installation of a 20-mil poly liner at the floor of the excavation (22 feet bgs), backfill the excavation to 12 feet bgs with the stockpiled material on-site, collecting soil samples at 500 cubic yard intervals ensuring TPH constituent concentrations were below 1000 mg/kg, backfilling to approximately 12 feet bgs level, install a second (2nd) 20-mil poly liner and backfill to surface, contour backfill and reseed with approved grass seed.

Additionally, the Revised Plan proposed to install three (3) groundwater monitoring wells to evaluate the quality of groundwater and report the results in the annual report. During the installation of the three (3) groundwater monitoring wells (03 October 2005), there were no

visual signs of PSH and laboratory results of the selected soil samples did not indicate BTEX and TPH constituent concentrations above laboratory method detection limits.

The NMOCD approved soil remediation activities were initiated in May 2006 and concluded in October 2006. A soil closure request is accompanying this annual report detailing the remedial activities conducted and requesting approval from NMOCD.

Currently, there are three (3) groundwater monitoring wells, MW-1 which is up gradient, MW-2 and MW-3, which are down gradient, on site.

FIELD ACTIVITIES

The site monitoring wells were gauged and sampled on 24 March 2006, 09 June 2006, 14 September 2006 and 27 December 2006. During the quarterly sampling events, the monitoring wells, designated to be sampled, were purged of approximately 3 well volumes of water or until the wells were dry using a PVC bailer or electrical Grundfos Pump. Groundwater was allowed to recharge and samples were obtained using disposable Teflon samplers. Water samples were stored in clean, glass containers provided by the laboratory and placed on ice in the field. Purge water was collected in a trailer mounted polystyrene tank and disposed at an approved disposal in Monument, New Mexico.

Locations of the groundwater monitoring wells and the inferred groundwater elevations, which were constructed from the measurements collected during the quarterly monitoring events, are depicted on Figures 2A through 2D. The groundwater elevation data are provided as Table 1.

The Groundwater Gradient Map, Figure 2D, indicates a general gradient of approximately 0.002 ft/ft. to the east-southeast as measured between groundwater monitor wells MW-1 and MW-2. The corrected groundwater elevation ranged between 4129.45 and 4128.98 feet, in MW-1 and MW-2, 27 December 2006, respectively.

LABORATORY RESULTS

Groundwater samples were collected from the groundwater monitoring wells (MW-1, MW-2 and MW-3) during the quarterly monitoring events and were delivered to Environmental Laboratory of Texas, Odessa, Texas for determination of benzene, toluene, ethylbenzene and xylenes (BTEX) constituent concentrations by EPA Method SW846-8021b. A listing of BTEX constituent concentrations for 2006 is summarized in Table 2 and the laboratory reports are provided as Appendix A.

Laboratory results for the three (3) site groundwater samples, obtained during the four (4) sampling periods, indicated that benzene and total BTEX constituent concentrations were below laboratory method detection limits for groundwater monitoring wells MW-1, MW-2 and MW-3, as depicted on Figures 3A through 3D.

Laboratory analytical results were compared to NMOCD regulatory limits based on the New Mexico groundwater standards found in section 20.6.2.3103 of the New Mexico Administrative Code.

SUMMARY

Based on the depth of the soil impact at this site, the NMOCD requested four (4) quarterly groundwater monitoring to be conducted at this site. This report presents the results of monitoring activities for the monitoring period. Currently, there are three (3) groundwater monitoring wells (MW-1, MW-2 and MW-3) on-site. The fourth (4th) quarter groundwater sampling event on 27 December 2006, indicates a general gradient of approximately 0.002 ft/ft to the east-southeast, as indicated on the Groundwater Gradient Map, Figure 2D.

Laboratory results for the three (3) site groundwater samples, obtained during the four (4) periods, indicated that benzene and BTEX constituent concentrations were below laboratory method detection limits for groundwater monitoring wells MW-1, MW-2 and MW-3.

ANTICIPATED ACTIONS

The NMOCD approved soil remediation activities at the Saunders 8" # 4 site were successfully completed in 2006 and a soil closure request is accompanying this annual monitoring report under separate cover. Laboratory results from five (5) consecutive quarterly groundwater sampling events indicate the groundwater samples analyzed from each sampling event were not detected above laboratory method detection limits for constituent concentrations of BTEX for groundwater monitoring wells MW-1, MW-2 and MW-3. Based on the soil remediation activities completed and the laboratory results for the groundwater samples collected during the 2005 and 2006 sampling periods, Plains request approval from the NMOCD to cease groundwater sampling and plug and abandon the three (3) groundwater monitoring wells.

LIMITATIONS

Basin has prepared this Annual Monitoring Report to the best of its ability. No other warranty, expressed or implied, is made or intended.

Basin has examined and relied upon documents referenced in the report and has relied on oral statements made by certain individuals. Basin has not conducted an independent examination of the facts contained in referenced materials and statements. We have presumed the genuineness of the documents and that the information provided in documents or statements is true and accurate. Basin has prepared this report, in a professional manner, using the degree of skill and care exercised by similar environmental consultants. Basin also notes that the facts and conditions referenced in this report may change over time and the conclusions and recommendations set forth herein are applicable only to the facts and conditions as described at the time of this report.

This report has been prepared for the benefit of Plains. The information contained in this report, including all exhibits and attachments, may not be used by any other party without the express consent of Basin and/or Plains.

DISTRIBUTION

Copy 1: Ben Stone
New Mexico Energy, Minerals and Natural Resources Department
Oil Conservation Division
1220 South St. Francis Drive
Santa Fe, New Mexico 87505
ben.stone@state.nm.us

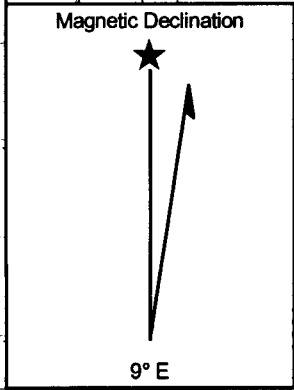
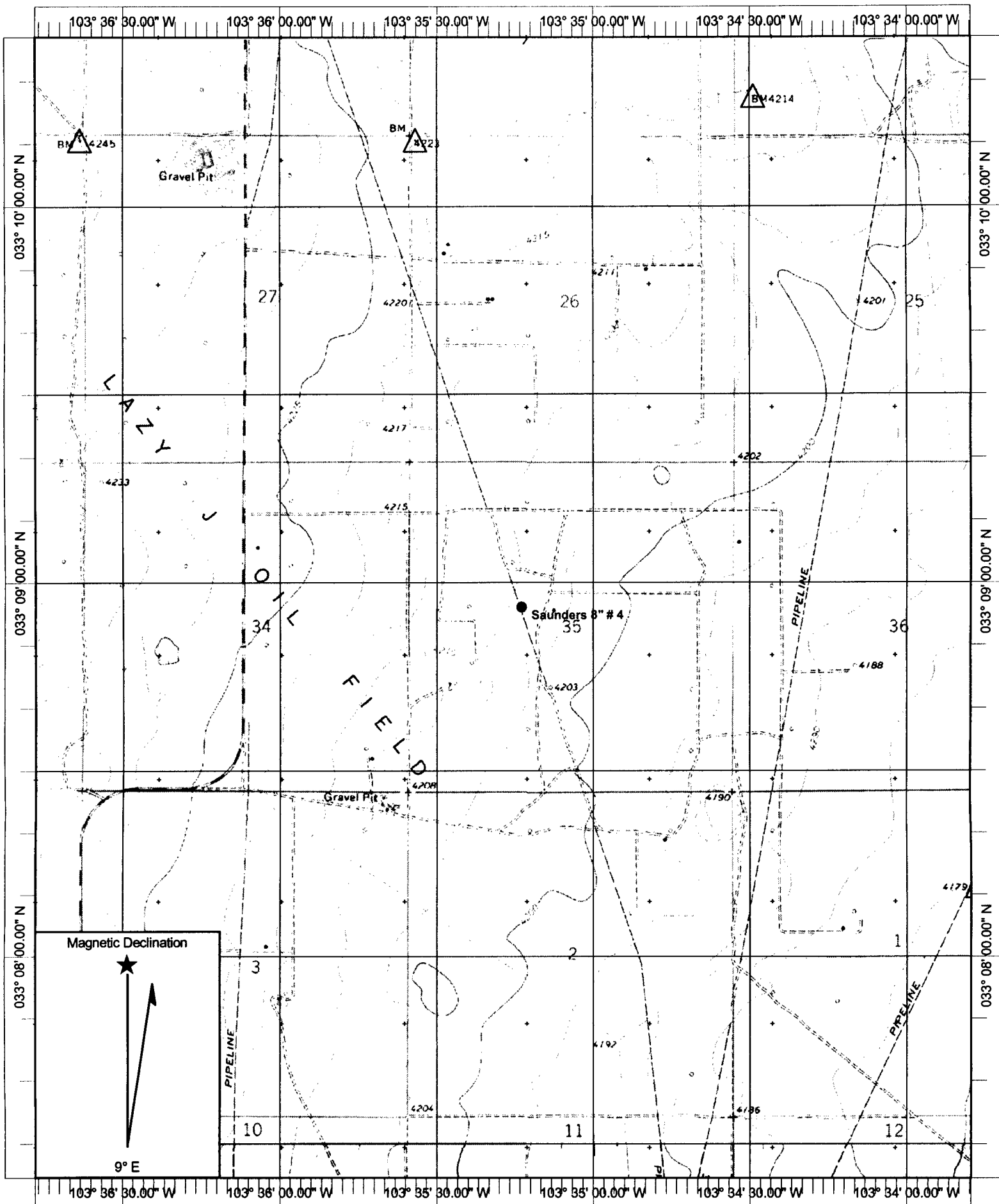
Copy 2: Larry Johnson
New Mexico Oil Conservation Division
1625 N. French Drive
Hobbs, New Mexico 88240
Larry.Johnson@state.nm.us

Copy 3: Jeff Dann
Plains Marketing, L.P.
333 Clay Street
Suite 1600
Houston, Texas 77002
jpdann@paalp.com

Copy 4: Camille Reynolds
Plains Marketing, L.P.
3112 Highway 82
Lovington, New Mexico 88260
cjreynolds@paalp.com

Copy 5: Basin Environmental Service Technologies, LLC
P. O. Box 301
Lovington, New Mexico 88260
kdutton@basinenv.com

Copy Number: 2



Name: FRIER RANCH
 Date: 1/15/2007
 Scale: 1 inch equals 2000 feet

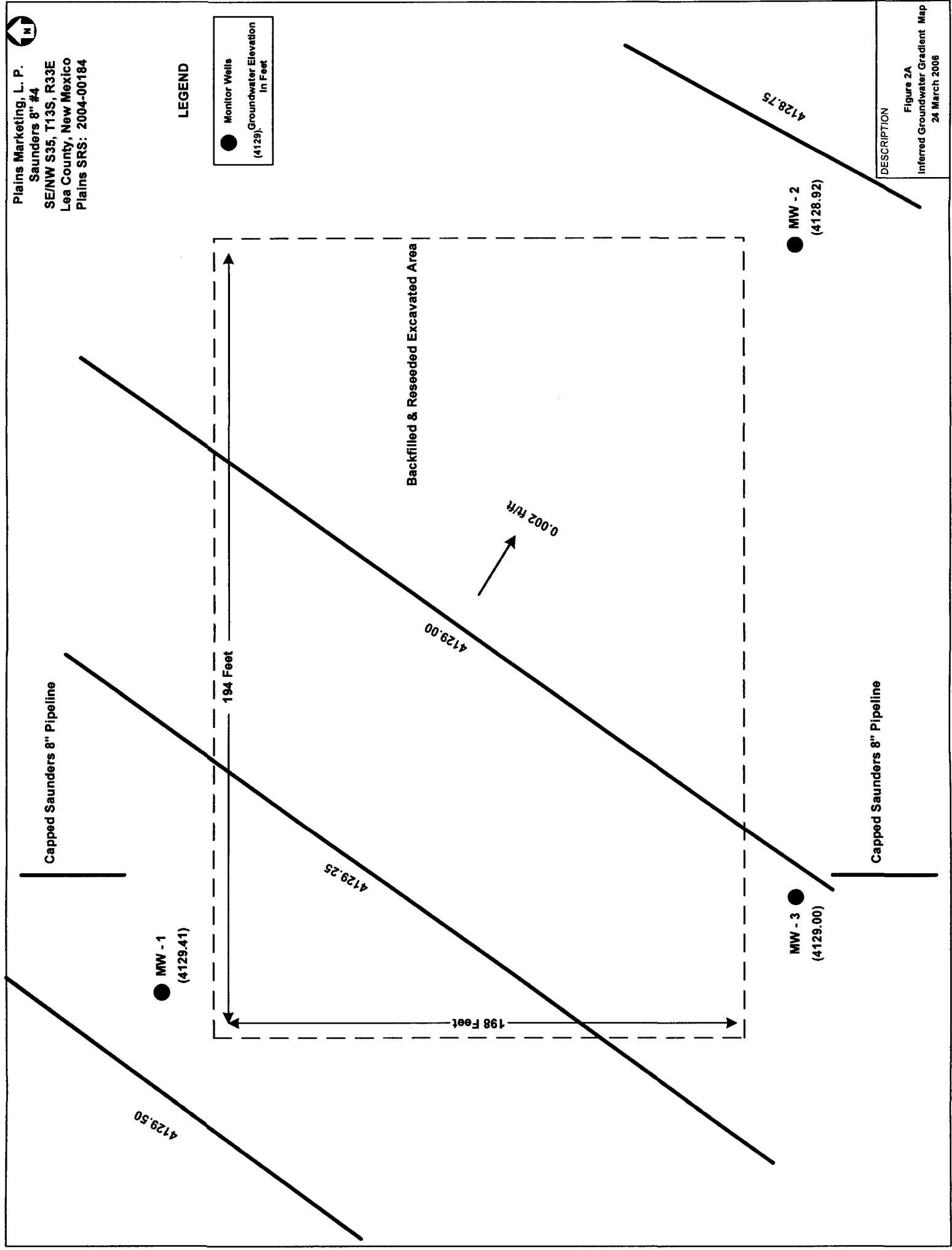
Location: 033° 08' 55.89" N 103° 35' 17.28" W NAD 27
 Caption: Figure 1, Site Location Map
 Plains Marketing, L. P.
 Saunders 8" # 4



Plains Marketing, L. P.
Saunders 8" #4
SE/NW S35, T13S, R33E
Lea County, New Mexico
Plains SRS: 2004-00184

LEGEND

● Monitor Wells
(4129) Groundwater Elevation
In Feet



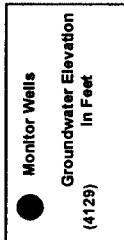
DESCRIPTION

Figure 2A
Inferred Groundwater Gradient Map
24 March 2006



Plains Marketing, L. P.
Saunders 8" #4
SE/NW S35, T13S, R33E
Lea County, New Mexico
Plains SRS: 2004-00184

LEGEND



Backfilled & Reseeded Excavated Area

0.002 ft/ft

Capped Saunders 8" Pipeline

Capped Saunders 8" Pipeline

MW - 1
(4129.44)

MW - 3
(4129.01)

MW - 2
(4128.94)

DESCRIPTION

Figure 2B
Inferred Groundwater Gradient Map
09 June 2006

4129.50

4129.25

4129.00

4128.75

194 Feet

198 Feet



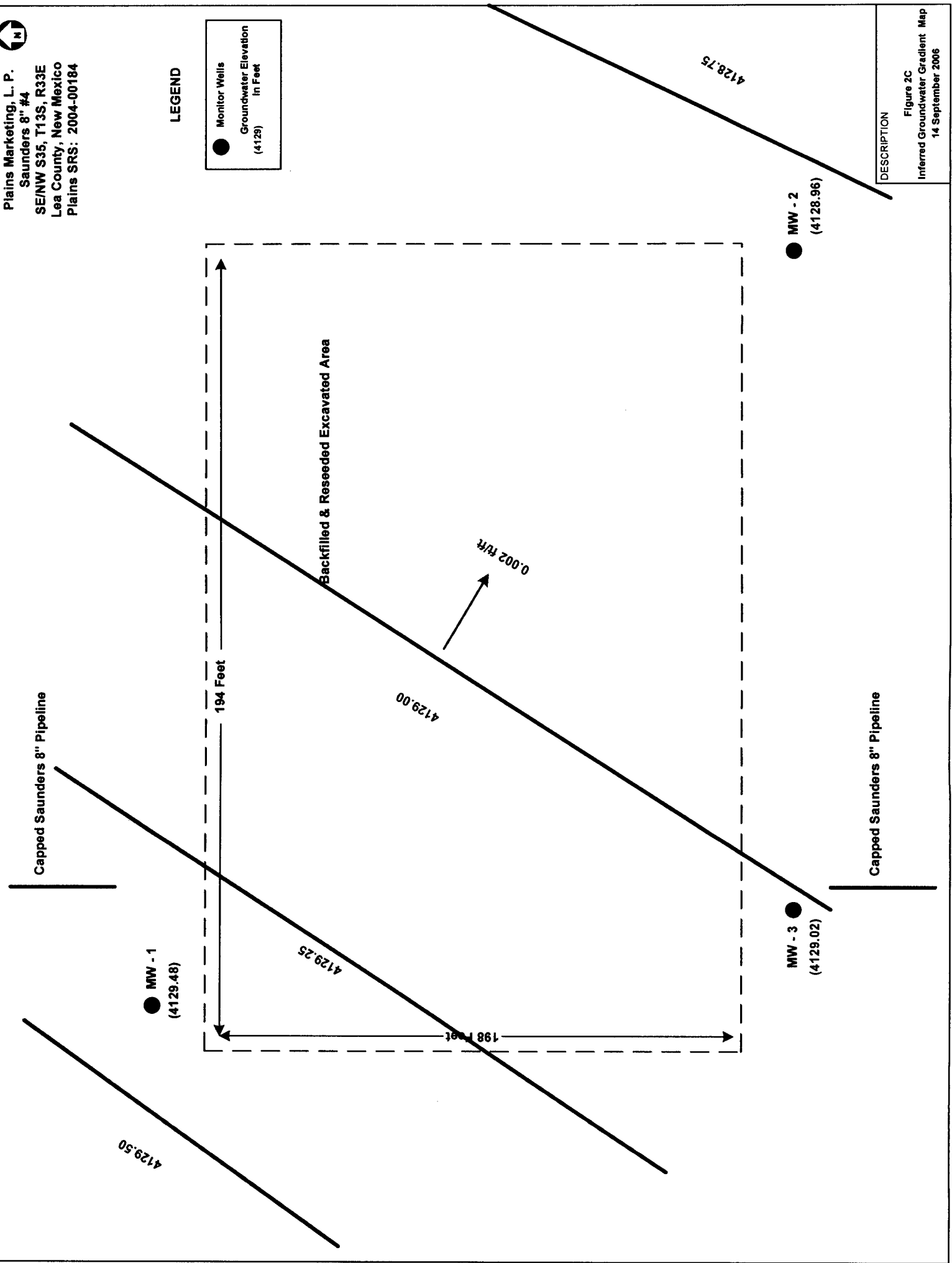
Plains Marketing, L. P.
Saunders 8" #4
SE/NW S35, T13S, R33E
Lea County, New Mexico
Plains SRS: 2004-00184

LEGEND

● Monitor Wells
Groundwater Elevation
in Feet
(4129)

DESCRIPTION

Figure 2C
Inferred Groundwater Gradient Map
14 September 2006





Plains Marketing, L. P.
Saunders 8" #4
SE/NW S35, T13S, R33E
Lea County, New Mexico
Plains SRS: 2004-00184

LEGEND



Capped Saunders 8" Pipeline

MW - 1
(4129.45)

194 Feet

Backfilled & Reseeded Excavated Area

198 Feet

4129.00

0.002 ft/R

MW - 3
(4129.03)

MW - 2
(4128.98)

4128.75

Capped Saunders 8" Pipeline

DESCRIPTION

Figure 2D
Inferred Groundwater Gradient Map
27 December 2006



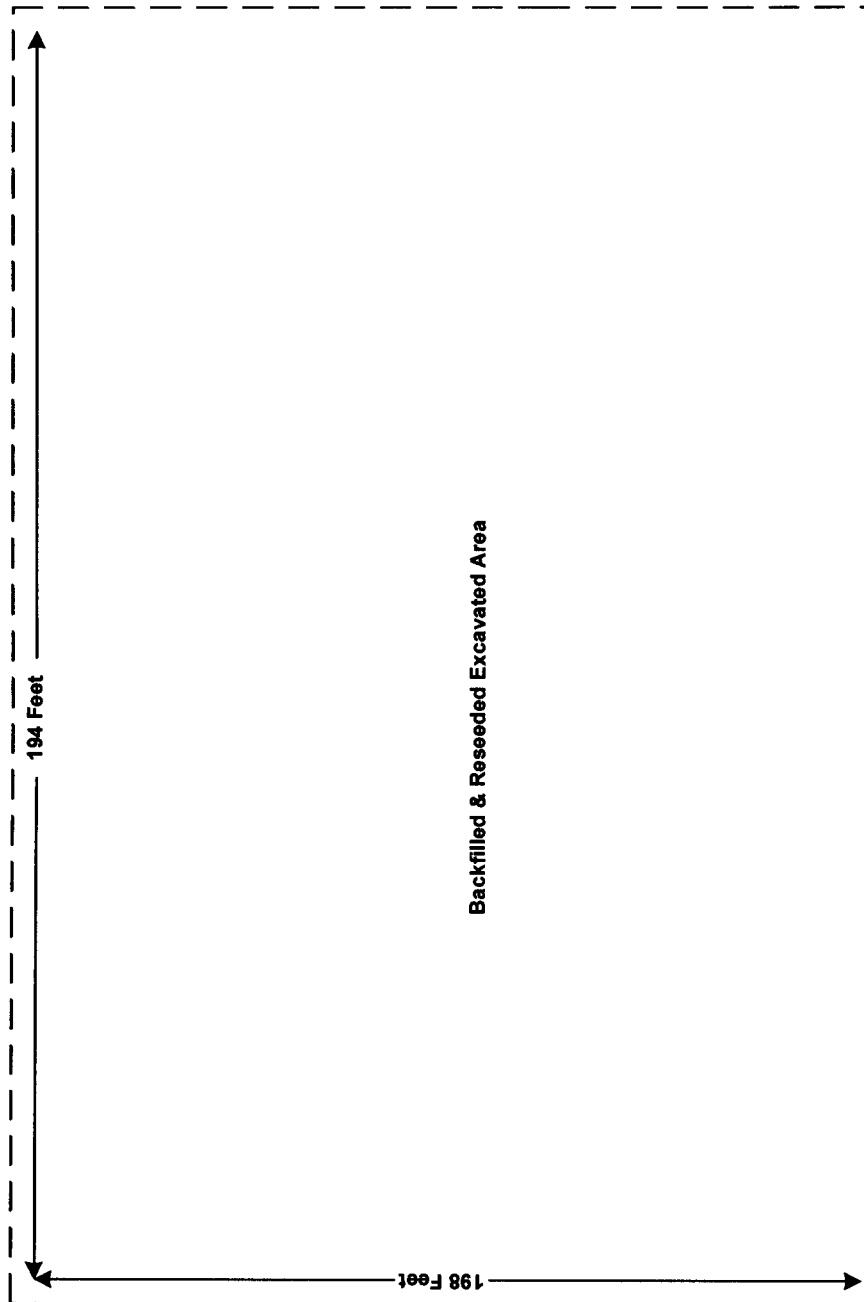
Plains Marketing, L. P.
Saunders 8" #4
SE/NW S35, T13S, R33E
Lea County, New Mexico
Plains SRS: 2004-00184

Capped Saunders 8" Pipeline

● MW - 1
Benzene: <0.001 mg/L
BTEX: <0.001 mg/L

LEGEND

● Monitor Wells



● MW - 3
Benzene: <0.001 mg/L
BTEX: <0.001 mg/L

Capped Saunders 8" Pipeline

● MW - 2
Benzene: <0.001 mg/L
BTEX: <0.001 mg/L

DESCRIPTION
Figure 3A Groundwater Concentration (BTEX) Map 24 March 2006



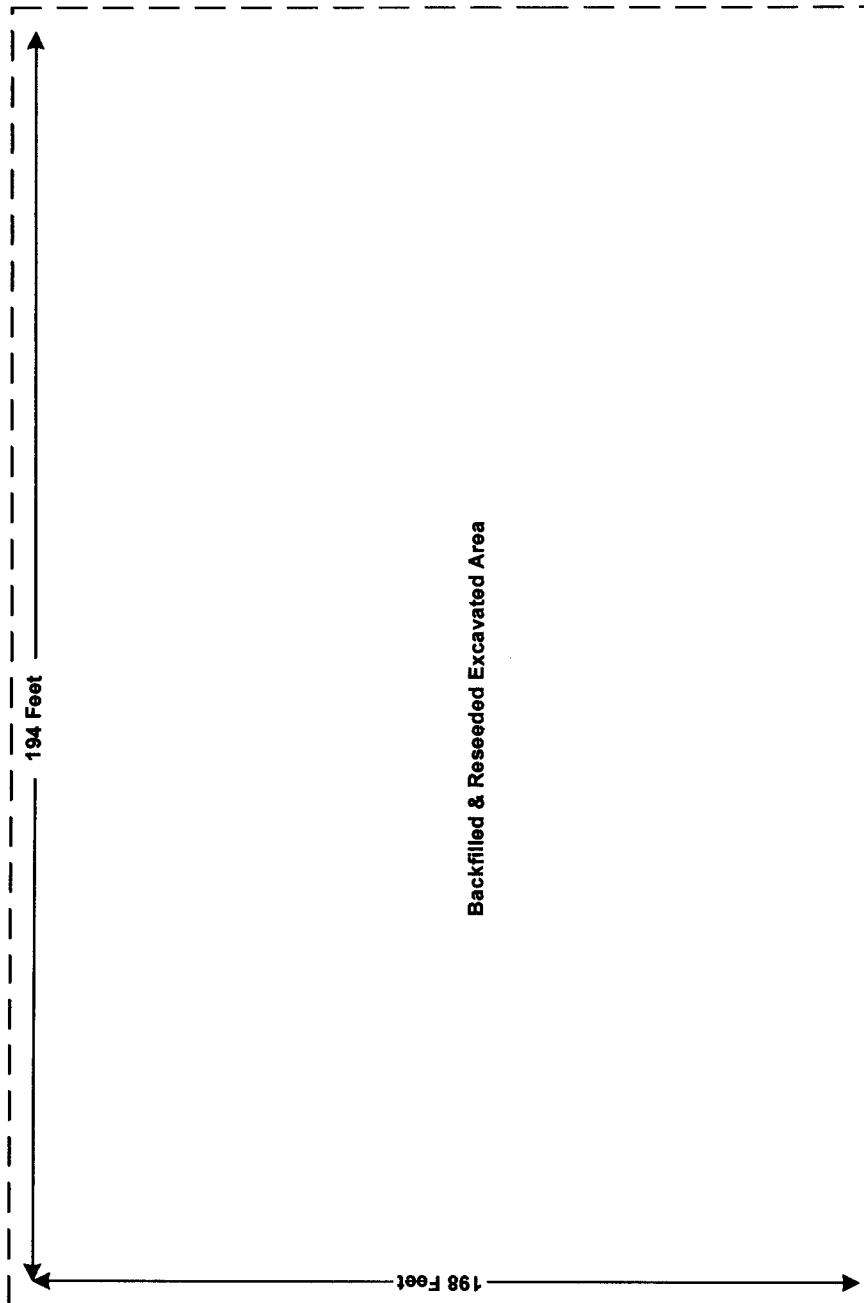
Plains Marketing, L. P.
Saunders 8" #4
SE/NW S35, T13S, R33E
Lea County, New Mexico
Plains SRS: 2004-00184

Capped Saunders 8" Pipeline

Benzene: <0.001 mg/L ● MW - 1
BTEX: <0.001 mg/L

LEGEND

● Monitor Wells



Backfilled & Reseeded Excavated Area

Benzene: <0.001 mg/L ● MW - 3
BTEX: <0.001 mg/L

Capped Saunders 8" Pipeline

Benzene: <0.001 mg/L ● MW - 2
BTEX: <0.001 mg/L

DESCRIPTION
Figure 3B Groundwater Concentration (BTEX) Map 09 June 2006



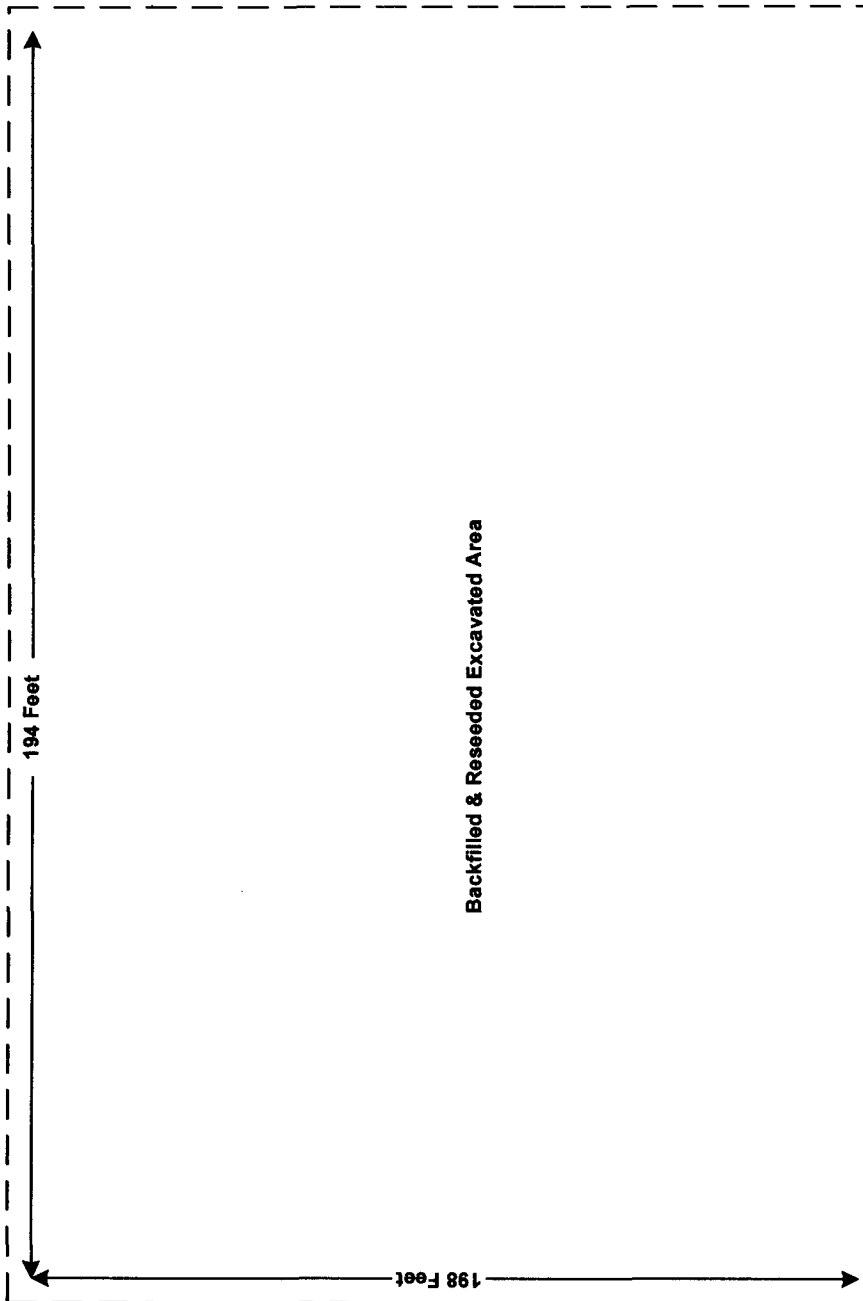
Plains Marketing, L. P.
Saunders 8" #4
SE/NW S35, T13S, R33E
Lea County, New Mexico
Plains SRS: 2004-00184

Capped Saunders 8" Pipeline

● MW - 1
Benzene: <0.001 mg/L
BTEX: <0.001 mg/L

LEGEND

● Monitor Wells



Backfilled & Reseeded Excavated Area

● MW - 3
Benzene: <0.001 mg/L
BTEX: <0.001 mg/L

● MW - 2
Benzene: <0.001 mg/L
BTEX: <0.001 mg/L

Capped Saunders 8" Pipeline

DESCRIPTION

Figure 3C

Groundwater Concentration (BTEX)

Map

14 September 2008



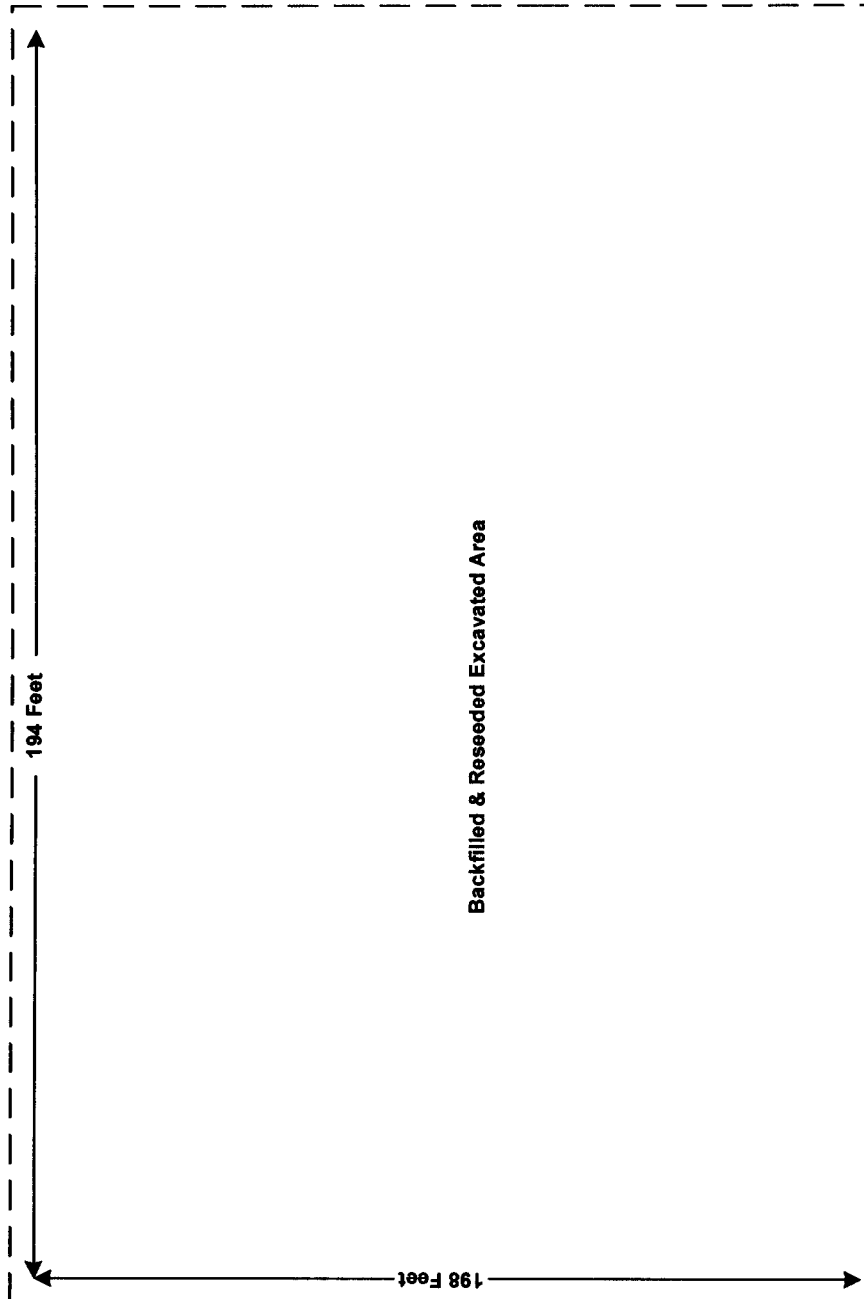
Plains Marketing, L. P.
Saunders 8" #4
SE/NW S35, T13S, R33E
Lea County, New Mexico
Plains SRS: 2004-00184

Capped Saunders 8" Pipeline

● MW - 1
Benzene: <0.001 mg/L
BTEX: <0.001 mg/L

LEGEND

● Monitor Wells



Backfilled & Reseeded Excavated Area

● MW - 3
Benzene: <0.001 mg/L
BTEX: <0.001 mg/L

Capped Saunders 8" Pipeline

● MW - 2
Benzene: <0.001 mg/L
BTEX: <0.001 mg/L

DESCRIPTION
Figure 3D Groundwater Concentration (BTEX) Map 27 December 2006

TABLE 1

GROUNDWATER ELEVATION DATA

PLAINS MARKETING, L.P.
 SAUNDERS 8" #4
 LEA COUNTY, NEW MEXICO
 PLAINS EMS NO. 2004-00184

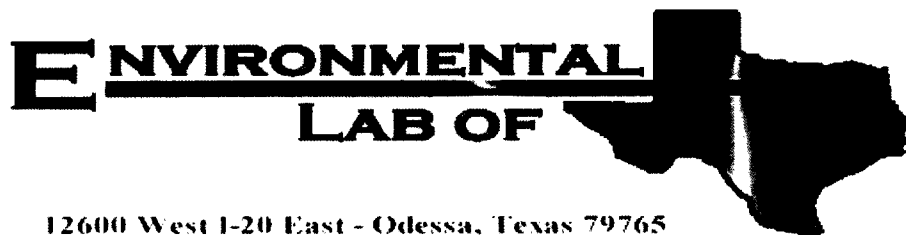
WELL NUMBER	DATE MEASURED	CASING WELL ELEVATION	DEPTH TO PRODUCT	DEPTH TO WATER	PSH THICKNESS	CORRECTED GROUNDWATER ELEVATION
MW - 1	10/24/05	4,213.31	-	83.83	0.00	4,129.48
	03/24/06	4,213.31	-	83.90	0.00	4,129.41
	06/09/06	4,213.31	-	83.87	0.00	4,129.44
	09/14/06	4,213.31	-	83.83	0.00	4,129.48
	12/27/06	4,213.31	-	83.86	0.00	4,129.45
MW - 2	10/24/05	4,212.89	-	83.96	0.00	4,128.93
	03/24/06	4,212.89	-	83.97	0.00	4,128.92
	06/09/06	4,212.89	-	83.95	0.00	4,128.94
	09/14/06	4,212.89	-	83.93	0.00	4,128.96
	12/27/06	4,212.89	-	83.91	0.00	4,128.98
MW-3	10/24/05	4,213.71	-	84.74	0.00	4,128.97
	03/24/06	4,213.71	-	84.71	0.00	4,129.00
	06/09/06	4,213.71	-	84.70	0.00	4,129.01
	09/14/06	4,213.71	-	84.69	0.00	4,129.02
	12/27/06	4,213.71	-	84.68	0.00	4,129.03

TABLE 2

CONCENTRATION OF BENZENE AND BTX IN GROUNDWATER

PLAINS MARKETING, L.P.
 SAUNDERS 8" # 4
 LEA COUNTY, NEW MEXICO
 PLAINS EMS NO. 2004-00184

SAMPLE LOCATION	SAMPLE DATE	METHODS: EPA SW 846-8021B, 5030				
		BENZENE (mg/L)	TOLUENE (mg/L)	ETHYL-BENZENE (mg/L)	M,P-XYLENES (mg/L)	O-XYLENES (mg/L)
MW-1	10/24/05	<0.001	<0.001	<0.001	<0.001	<0.001
	03/24/06	<0.001	<0.001	<0.001	<0.001	<0.001
	06/09/06	<0.001	<0.001	<0.001	<0.001	<0.001
	09/14/06	<0.001	<0.001	<0.001	<0.001	<0.001
	12/27/06	<0.001	<0.001	<0.001	<0.001	<0.001
MW-2	10/24/05	<0.001	<0.001	<0.001	<0.001	<0.001
	03/24/06	<0.001	<0.001	<0.001	<0.001	<0.001
	06/09/06	<0.001	<0.001	<0.001	<0.001	<0.001
	09/14/06	<0.001	<0.001	<0.001	<0.001	<0.001
	12/27/06	<0.001	<0.001	<0.001	<0.001	<0.001
MW-3	10/24/05	<0.001	<0.001	<0.001	<0.001	<0.001
	03/25/06	<0.001	<0.001	<0.001	<0.001	<0.001
	06/09/06	<0.001	<0.001	<0.001	<0.001	<0.001
	09/14/06	<0.001	<0.001	<0.001	<0.001	<0.001
	12/27/06	<0.001	<0.001	<0.001	<0.001	<0.001
NMOC CRITERIA		0.01	0.75	0.75	TOTAL XYLENES 0.62	



12600 West I-20 East - Odessa, Texas 79765

Analytical Report

Prepared for:

Camille Reynolds

Plains All American EH & S

1301 S. County Road 1150

Midland, TX 79706-4476

Project: Saunders 8" #4

Project Number: 2004-00184

Location: Lea Co., NM

Lab Order Number: 6C28012

Report Date: 04/03/06

Plains All American EH & S
1301 S. County Road 1150
Midland TX, 79706-4476

Project: Saunders 8" #4
Project Number: 2004-00184
Project Manager: Camille Reynolds

Fax: (432) 687-4914
Reported:
04/03/06 14:18

ANALYTICAL REPORT FOR SAMPLES

Sample ID	Laboratory ID	Matrix	Date Sampled	Date Received
MW-1	6C28012-01	Water	03/24/06 11:04	03/28/06 11:45
MW-2	6C28012-02	Water	03/24/06 15:45	03/28/06 11:45
MW-3	6C28012-03	Water	03/25/06 09:55	03/28/06 11:45

Plains All American EH & S
1301 S. County Road 1150
Midland TX, 79706-4476

Project: Saunders 8" #4
Project Number: 2004-00184
Project Manager: Camille Reynolds

Fax: (432) 687-4914

Reported:
04/03/06 14:18

Organics by GC
Environmental Lab of Texas

Analyte	Result	Reporting Limit	Units	Dilution	Batch	Prepared	Analyzed	Method	Notes
MW-1 (6C28012-01) Water									
Benzene	ND	0.00100	mg/L	1	EC63016	03/30/06	03/31/06	EPA 8021B	
Toluene	ND	0.00100	"	"	"	"	"	"	
Ethylbenzene	ND	0.00100	"	"	"	"	"	"	
Xylene (p/m)	ND	0.00100	"	"	"	"	"	"	
Xylene (o)	ND	0.00100	"	"	"	"	"	"	
Surrogate: <i>a,a,a</i> -Trifluorotoluene		87.0 %	80-120		"	"	"	"	
Surrogate: 4-Bromofluorobenzene		92.8 %	80-120		"	"	"	"	
MW-2 (6C28012-02) Water									
Benzene	ND	0.00100	mg/L	1	EC63016	03/30/06	03/31/06	EPA 8021B	
Toluene	ND	0.00100	"	"	"	"	"	"	
Ethylbenzene	ND	0.00100	"	"	"	"	"	"	
Xylene (p/m)	ND	0.00100	"	"	"	"	"	"	
Xylene (o)	ND	0.00100	"	"	"	"	"	"	
Surrogate: <i>a,a,a</i> -Trifluorotoluene		87.0 %	80-120		"	"	"	"	
Surrogate: 4-Bromofluorobenzene		90.2 %	80-120		"	"	"	"	
MW-3 (6C28012-03) Water									
Benzene	ND	0.00100	mg/L	1	EC63016	03/30/06	03/31/06	EPA 8021B	
Toluene	ND	0.00100	"	"	"	"	"	"	
Ethylbenzene	ND	0.00100	"	"	"	"	"	"	
Xylene (p/m)	ND	0.00100	"	"	"	"	"	"	
Xylene (o)	ND	0.00100	"	"	"	"	"	"	
Surrogate: <i>a,a,a</i> -Trifluorotoluene		89.0 %	80-120		"	"	"	"	
Surrogate: 4-Bromofluorobenzene		86.8 %	80-120		"	"	"	"	

Environmental Lab of Texas

The results in this report apply to the samples analyzed in accordance with the samples received in the laboratory. This analytical report must be reproduced in its entirety, with written approval of Environmental Lab of Texas.

Page 2 of 5

Plains All American EH & S
1301 S. County Road 1150
Midland TX, 79706-4476

Project: Saunders 8" #4
Project Number: 2004-00184
Project Manager: Camille Reynolds

Fax: (432) 687-4914

Reported:
04/03/06 14:18

Organics by GC - Quality Control
Environmental Lab of Texas

Analyte	Result	Reporting Limit	Units	Spike Level	Source Result	%REC	%REC Limits	RPD	RPD Limit	Notes
Batch EC63016 - EPA 5030C (GC)										
Blank (EC63016-BLK1)				Prepared & Analyzed: 03/30/06						
Benzene	ND	0.00100	mg/L							
Toluene	ND	0.00100	"							
Ethylbenzene	ND	0.00100	"							
Xylene (p/m)	ND	0.00100	"							
Xylene (o)	ND	0.00100	"							
Surrogate: a,a,a-Trifluorotoluene	33.8		ug/l	40.0		84.5	80-120			
Surrogate: 4-Bromofluorobenzene	38.6		"	40.0		96.5	80-120			
LCS (EC63016-BS1)				Prepared & Analyzed: 03/30/06						
Benzene	0.0405	0.00100	mg/L	0.0500		81.0	80-120			
Toluene	0.0441	0.00100	"	0.0500		88.2	80-120			
Ethylbenzene	0.0593	0.00100	"	0.0500		119	80-120			
Xylene (p/m)	0.102	0.00100	"	0.100		102	80-120			
Xylene (o)	0.0499	0.00100	"	0.0500		99.8	80-120			
Surrogate: a,a,a-Trifluorotoluene	34.4		ug/l	40.0		86.0	80-120			
Surrogate: 4-Bromofluorobenzene	39.8		"	40.0		99.5	80-120			
Calibration Check (EC63016-CCV1)				Prepared: 03/30/06 Analyzed: 03/31/06						
Benzene	45.1		ug/l	50.0		90.2	80-120			
Toluene	41.8		"	50.0		83.6	80-120			
Ethylbenzene	46.8		"	50.0		93.6	80-120			
Xylene (p/m)	95.9		"	100		95.9	80-120			
Xylene (o)	47.5		"	50.0		95.0	80-120			
Surrogate: a,a,a-Trifluorotoluene	39.7		"	40.0		99.2	80-120			
Surrogate: 4-Bromofluorobenzene	35.1		"	40.0		87.8	80-120			
Matrix Spike (EC63016-MS1)				Source: 6C24010-02 Prepared: 03/30/06 Analyzed: 03/31/06						
Benzene	0.0450	0.00100	mg/L	0.0500	ND	90.0	80-120			
Toluene	0.0429	0.00100	"	0.0500	ND	85.8	80-120			
Ethylbenzene	0.0491	0.00100	"	0.0500	ND	98.2	80-120			
Xylene (p/m)	0.0999	0.00100	"	0.100	ND	99.9	80-120			
Xylene (o)	0.0492	0.00100	"	0.0500	ND	98.4	80-120			
Surrogate: a,a,a-Trifluorotoluene	35.1		ug/l	40.0		87.8	80-120			
Surrogate: 4-Bromofluorobenzene	36.9		"	40.0		92.2	80-120			

Environmental Lab of Texas

The results in this report apply to the samples analyzed in accordance with the samples received in the laboratory. This analytical report must be reproduced in its entirety, with written approval of Environmental Lab of Texas.

Page 3 of 5

Plains All American EH & S
1301 S. County Road 1150
Midland TX, 79706-4476

Project: Saunders 8" #4
Project Number: 2004-00184
Project Manager: Camille Reynolds

Fax: (432) 687-4914

Reported:
04/03/06 14:18

Organics by GC - Quality Control
Environmental Lab of Texas

Analyte	Result	Reporting Limit	Units	Spike Level	Source Result	%REC	%REC Limits	RPD	RPD Limit	Notes
Batch EC63016 - EPA 5030C (GC)										
Matrix Spike Dup (EC63016-MSD1)		Source: 6C24010-02			Prepared: 03/30/06 Analyzed: 03/31/06					
Benzene	0.0433	0.00100	mg/L	0.0500	ND	86.6	80-120	3.85	20	
Toluene	0.0415	0.00100	"	0.0500	ND	83.0	80-120	3.32	20	
Ethylbenzene	0.0475	0.00100	"	0.0500	ND	95.0	80-120	3.31	20	
Xylene (p/m)	0.0971	0.00100	"	0.100	ND	97.1	80-120	2.84	20	
Xylene (o)	0.0475	0.00100	"	0.0500	ND	95.0	80-120	3.52	20	
Surrogate: a,a,a-Trifluorotoluene	43.1		ug/l	40.0		108	80-120			
Surrogate: 4-Bromofluorobenzene	34.5		"	40.0		86.2	80-120			

Environmental Lab of Texas

The results in this report apply to the samples analyzed in accordance with the samples received in the laboratory. This analytical report must be reproduced in its entirety, with written approval of Environmental Lab of Texas.

Page 4 of 5

Plains All American EH & S
1301 S. County Road 1150
Midland TX, 79706-4476

Project: Saunders 8" #4
Project Number: 2004-00184
Project Manager: Camille Reynolds

Fax: (432) 687-4914

Reported:
04/03/06 14:18

Notes and Definitions

DET Analyte DETECTED
ND Analyte NOT DETECTED at or above the reporting limit
NR Not Reported
dry Sample results reported on a dry weight basis
RPD Relative Percent Difference
LCS Laboratory Control Spike
MS Matrix Spike
Dup Duplicate

Report Approved By:

Raland K. Tuttle

Date:

4/3/2006

Raland K. Tuttle, Lab Manager
Celey D. Keene, Lab Director, Org. Tech Director
Peggy Allen, QA Officer

Jeanne Mc Murrey, Inorg. Tech Director
LaTasha Cornish, Chemist
Sandra Sanchez, Lab Tech.

This material is intended only for the use of the individual (s) or entity to whom it is addressed, and may contain information that is privileged and confidential.

If you have received this material in error, please notify us immediately at 432-563-1800.

**12600 West I-20 East
Odessa, Texas 79763**

Phone: 915-563-1800
Fax: 915-563-1713

CHAIN OF CUSTODY RECORD AND ANALYSIS REQUEST

Ken Outson

forwarding list

P.O. Box 301

Lauren: NM 885

1574-505

12

Fax No: 505-306-1470

Spencer 8-24

PHS/00-5002 #3 WY

Project Loc: Lea Co.: nms

BO # P441c Remo/ls

[illegible]

Environmental Lab of Texas Variance / Corrective Action Report - Sample Log-In

Client Plains
Date/Time 3/28/02 11:45
Order #: 078012
Initials CR

Sample Receipt Checklist

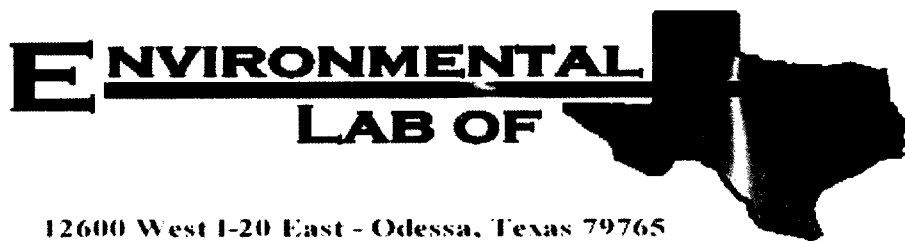
Temperature of container/cooler?	Yes	No	210	C
Shipping container/cooler in good condition?	<input checked="" type="checkbox"/>	No		
Custody Seals intact on shipping container/cooler?	Yes	No	Not present	
Custody Seals intact on sample bottles?	<input checked="" type="checkbox"/>	No	Not present	
Chain of custody present?	<input checked="" type="checkbox"/>	No		
Sample Instructions complete on Chain of Custody?	<input checked="" type="checkbox"/>	No		
Chain of Custody signed when relinquished and received?	<input checked="" type="checkbox"/>	No		
Chain of custody agrees with sample label(s)	<input checked="" type="checkbox"/>	No		
Container labels legible and intact?	<input checked="" type="checkbox"/>	No		
Sample Matrix and properties same as on chain of custody?	<input checked="" type="checkbox"/>	No		
Samples in proper container/bottle?	<input checked="" type="checkbox"/>	No		
Samples properly preserved?	<input checked="" type="checkbox"/>	No		
Sample bottles intact?	<input checked="" type="checkbox"/>	No		
Preservations documented on Chain of Custody?	<input checked="" type="checkbox"/>	No		
Containers documented on Chain of Custody?	<input checked="" type="checkbox"/>	No		
Sufficient sample amount for indicated test?	<input checked="" type="checkbox"/>	No		
All samples received within sufficient hold time?	<input checked="" type="checkbox"/>	No		
VOC samples have zero headspace?	<input checked="" type="checkbox"/>	No	Not Applicable	

Other observations:

Variance Documentation:

Contact Person: - _____ Date/Time: _____ Contacted by: _____
Regarding: _____

Corrective Action Taken:



Analytical Report

Prepared for:

Camille Reynolds

Plains All American EH & S

1301 S. County Road 1150

Midland, TX 79706-4476

Project: Saunders 8" #4

Project Number: 2004-00184

Location: Lea Co., NM

Lab Order Number: 6F15012

Report Date: 06/23/06

Plains All American EH & S
1301 S. County Road 1150
Midland TX, 79706-4476

Project: Saunders 8" #4
Project Number: 2004-00184
Project Manager: Camille Reynolds

Fax: (432) 687-4914

ANALYTICAL REPORT FOR SAMPLES

Sample ID	Laboratory ID	Matrix	Date Sampled	Date Received
MW-1	6F15012-01	Water	06/09/06 09:55	06/15/06 12:45
MW-2	6F15012-02	Water	06/09/06 10:50	06/15/06 12:45
MW-3	6F15012-03	Water	06/09/06 11:53	06/15/06 12:45

Plains All American EH & S
1301 S. County Road 1150
Midland TX, 79706-4476

Project: Saunders 8" #4
Project Number: 2004-00184
Project Manager: Camille Reynolds

Fax: (432) 687-4914

Organics by GC
Environmental Lab of Texas

Analyte	Result	Reporting Limit	Units	Dilution	Batch	Prepared	Analyzed	Method	Notes
MW-1 (6F15012-01) Water									
Benzene	ND	0.00100	mg/L	1	EF62102	06/21/06	06/21/06	EPA 8021B	
Toluene	ND	0.00100	"	"	"	"	"	"	
Ethylbenzene	ND	0.00100	"	"	"	"	"	"	
Xylene (p/m)	ND	0.00100	"	"	"	"	"	"	
Xylene (o)	ND	0.00100	"	"	"	"	"	"	
Surrogate: a,a,a-Trifluorotoluene		91.5 %	80-120		"	"	"	"	
Surrogate: 4-Bromofluorobenzene		95.5 %	80-120		"	"	"	"	
MW-2 (6F15012-02) Water									
Benzene	ND	0.00100	mg/L	1	EF62102	06/21/06	06/21/06	EPA 8021B	
Toluene	ND	0.00100	"	"	"	"	"	"	
Ethylbenzene	ND	0.00100	"	"	"	"	"	"	
Xylene (p/m)	ND	0.00100	"	"	"	"	"	"	
Xylene (o)	ND	0.00100	"	"	"	"	"	"	
Surrogate: a,a,a-Trifluorotoluene		104 %	80-120		"	"	"	"	
Surrogate: 4-Bromofluorobenzene		97.2 %	80-120		"	"	"	"	
MW-3 (6F15012-03) Water									
Benzene	ND	0.00100	mg/L	1	EF62102	06/21/06	06/21/06	EPA 8021B	
Toluene	ND	0.00100	"	"	"	"	"	"	
Ethylbenzene	ND	0.00100	"	"	"	"	"	"	
Xylene (p/m)	ND	0.00100	"	"	"	"	"	"	
Xylene (o)	ND	0.00100	"	"	"	"	"	"	
Surrogate: a,a,a-Trifluorotoluene		95.0 %	80-120		"	"	"	"	
Surrogate: 4-Bromofluorobenzene		103 %	80-120		"	"	"	"	

Environmental Lab of Texas

The results in this report apply to the samples analyzed in accordance with the samples received in the laboratory. This analytical report must be reproduced in its entirety, with written approval of Environmental Lab of Texas.

Page 2 of 5

Plains All American EH & S
1301 S. County Road 1150
Midland TX, 79706-4476

Project: Saunders 8" #4
Project Number: 2004-00184
Project Manager: Camille Reynolds

Fax: (432) 687-4914

Organics by GC - Quality Control
Environmental Lab of Texas

Analyte	Result	Reporting Limit	Units	Spike Level	Source Result	%REC	%REC Limits	RPD	RPD Limit	Notes
---------	--------	--------------------	-------	----------------	------------------	------	----------------	-----	--------------	-------

Batch EF62102 - EPA 5030C (GC)

Blank (EF62102-BLK1)

Prepared & Analyzed: 06/21/06

Benzene	ND	0.00100	mg/L							
Toluene	ND	0.00100	"							
Ethylbenzene	ND	0.00100	"							
Xylene (p/m)	ND	0.00100	"							
Xylene (o)	ND	0.00100	"							
Surrogate: a,a,a-Trifluorotoluene	40.8		ug/l	40.0		102	80-120			
Surrogate: 4-Bromofluorobenzene	32.0		"	40.0		80.0	80-120			

LCS (EF62102-BS1)

Prepared & Analyzed: 06/21/06

Benzene	0.0523	0.00100	mg/L	0.0500		105	80-120			
Toluene	0.0568	0.00100	"	0.0500		114	80-120			
Ethylbenzene	0.0548	0.00100	"	0.0500		110	80-120			
Xylene (p/m)	0.119	0.00100	"	0.100		119	80-120			
Xylene (o)	0.0582	0.00100	"	0.0500		116	80-120			
Surrogate: a,a,a-Trifluorotoluene	42.8		ug/l	40.0		107	80-120			
Surrogate: 4-Bromofluorobenzene	41.1		"	40.0		103	80-120			

Calibration Check (EF62102-CCV1)

Prepared & Analyzed: 06/21/06

Benzene	58.5		ug/l	50.0		117	80-120			
Toluene	59.9		"	50.0		120	80-120			
Ethylbenzene	58.1		"	50.0		116	80-120			
Xylene (p/m)	119		"	100		119	80-120			
Xylene (o)	59.6		"	50.0		119	80-120			
Surrogate: a,a,a-Trifluorotoluene	43.0		"	40.0		108	80-120			
Surrogate: 4-Bromofluorobenzene	38.6		"	40.0		96.5	80-120			

Matrix Spike (EF62102-MS1)

Source: 6F15011-01

Prepared & Analyzed: 06/21/06

Benzene	0.0523	0.00100	mg/L	0.0500	ND	105	80-120			
Toluene	0.0579	0.00100	"	0.0500	ND	116	80-120			
Ethylbenzene	0.0509	0.00100	"	0.0500	ND	102	80-120			
Xylene (p/m)	0.119	0.00100	"	0.100	ND	119	80-120			
Xylene (o)	0.0598	0.00100	"	0.0500	ND	120	80-120			
Surrogate: a,a,a-Trifluorotoluene	44.0		ug/l	40.0		110	80-120			
Surrogate: 4-Bromofluorobenzene	43.6		"	40.0		109	80-120			

Environmental Lab of Texas

The results in this report apply to the samples analyzed in accordance with the samples received in the laboratory. This analytical report must be reproduced in its entirety, with written approval of Environmental Lab of Texas.

Page 3 of 5

Plains All American EH & S
1301 S. County Road 1150
Midland TX, 79706-4476

Project: Saunders 8" #4
Project Number: 2004-00184
Project Manager: Camille Reynolds

Fax: (432) 687-4914

Organics by GC - Quality Control
Environmental Lab of Texas

Analyte	Result	Reporting Limit	Units	Spike Level	Source Result	%REC	%REC Limits	RPD	RPD Limit	Notes
Batch EF62102 - EPA 5030C (GC)										
Matrix Spike Dup (EF62102-MSD1)		Source: 6F15011-01			Prepared & Analyzed: 06/21/06					
Benzene	0.0579	0.00100	mg/L	0.0500	ND	116	80-120	9.95	20	
Toluene	0.0576	0.00100	"	0.0500	ND	115	80-120	0.866	20	
Ethylbenzene	0.0578	0.00100	"	0.0500	ND	116	80-120	12.8	20	
Xylene (p/m)	0.120	0.00100	"	0.100	ND	120	80-120	0.837	20	
Xylene (o)	0.0580	0.00100	"	0.0500	ND	116	80-120	3.39	20	
Surrogate: a,a,a-Trifluorotoluene	40.7		ug/l	40.0		102	80-120			
Surrogate: 4-Bromofluorobenzene	41.0		"	40.0		102	80-120			

Plains All American EH & S
1301 S. County Road 1150
Midland TX, 79706-4476

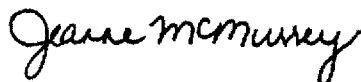
Project: Saunders 8" #4
Project Number: 2004-00184
Project Manager: Camille Reynolds

Fax: (432) 687-4914

Notes and Definitions

DET Analyte DETECTED
ND Analyte NOT DETECTED at or above the reporting limit
NR Not Reported
dry Sample results reported on a dry weight basis
RPD Relative Percent Difference
LCS Laboratory Control Spike
MS Matrix Spike
Dup Duplicate

Report Approved By:



Date: 6/23/2006

Raland K. Tuttle, Lab Manager
Celey D. Keene, Lab Director, Org. Tech Director
Peggy Allen, QA Officer

Jeanne Mc Murrey, Inorg. Tech Director
La Tasha Cornish, Chemist
Sandra Sanchez, Lab Tech.

This material is intended only for the use of the individual (s) or entity to whom it is addressed, and may contain information that is privileged and confidential.

If you have received this material in error, please notify us immediately at 432-563-1800.

CHAIN OF CUSTODY RECORD AND ANALYSIS REQUEST

Project Name: Sanders 8'44

Project #: EMS# 2004-00184

Project Loc: Lea Co., NM

PO #:

Ear No: 505-396-1479

Sampler Signature: _____

[illegible]

Special Instructions:

Sample Containers Intact?	N	N
Temperature Upon Receipt:		
Laboratory Comments:		

Relinquished by:

Time

Date _____

1.

1

Received by:

Time

Water

[illegible]

11

1

red b

Reli

Relinquished by:

Time

Date _____

--	--

1

Pharmacology

Received by ELC

Time

Debra

1

1

1

hed b

Reli

w seats or label

Environmental Lab of Texas Variance / Corrective Action Report – Sample Log-In

ent: Plams
 te/Time: 6/15/06 12:45
 der #: 10 F150
 ials: ck

Sample Receipt Checklist

Temperature of container/cooler?	Yes	No	Q, S	C
Shipping container/cooler in good condition?	<input checked="" type="checkbox"/>	No		
Study Seals intact on shipping container/cooler?	<input checked="" type="checkbox"/>	No	Not present	
Study Seals intact on sample bottles?	<input checked="" type="checkbox"/>	No	Not present	
Chain of custody present?	<input checked="" type="checkbox"/>	No		
Sample Instructions complete on Chain of Custody?	<input checked="" type="checkbox"/>	No		
Chain of Custody signed when relinquished and received?	<input checked="" type="checkbox"/>	No		
Chain of custody agrees with sample label(s)	<input checked="" type="checkbox"/>	No		
Container labels legible and intact?	<input checked="" type="checkbox"/>	No		
Sample Matrix and properties same as on chain of custody?	<input checked="" type="checkbox"/>	No		
Samples in proper container/bottle?	<input checked="" type="checkbox"/>	No		
Samples properly preserved?	<input checked="" type="checkbox"/>	No		
Sample bottles intact?	<input checked="" type="checkbox"/>	No		
Reservations documented on Chain of Custody?	<input checked="" type="checkbox"/>	No		
Containers documented on Chain of Custody?	<input checked="" type="checkbox"/>	No		
Sufficient sample amount for indicated test?	<input checked="" type="checkbox"/>	No		
All samples received within sufficient hold time?	<input checked="" type="checkbox"/>	No		
QC samples have zero headspace?	<input checked="" type="checkbox"/>	No	Not Applicable	

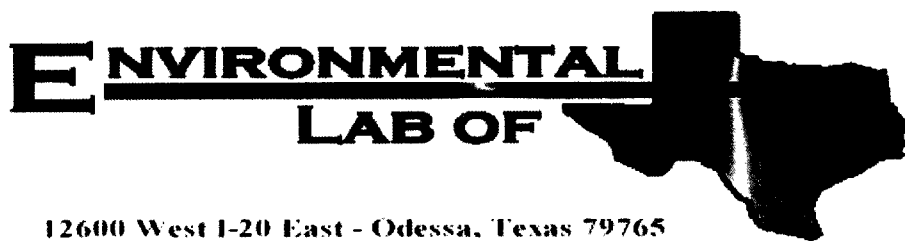
Other observations:

Variance Documentation:

Contact Person: - _____ Date/Time: _____ Contacted by: _____

Regarding:

Corrective Action Taken:



12600 West I-20 East - Odessa, Texas 79765

Analytical Report

Prepared for:

Camille Reynolds

Plains All American EH & S

1301 S. County Road 1150

Midland, TX 79706-4476

Project: Saunders 8" #4

Project Number: 2004-00184

Location: Lea County, NM

Lab Order Number: 6115015

Report Date: 09/21/06

Plains All American EH & S
1301 S. County Road 1150
Midland TX, 79706-4476

Project: Saunders 8" #4
Project Number: 2004-00184
Project Manager: Camille Reynolds

Fax: (432) 687-4914

ANALYTICAL REPORT FOR SAMPLES

Sample ID	Laboratory ID	Matrix	Date Sampled	Date Received
MW-1	6I15015-01	Water	09/14/06 15:41	09-15-2006 13:35
MW-2	6I15015-02	Water	09/14/06 13:40	09-15-2006 13:35
MW-3	6I15015-03	Water	09/14/06 14:37	09-15-2006 13:35

Plains All American EH & S
1301 S. County Road 1150
Midland TX, 79706-4476

Project: Saunders 8" #4
Project Number: 2004-00184
Project Manager: Camille Reynolds

Fax: (432) 687-4914

Organics by GC
Environmental Lab of Texas

Analyte	Result	Reporting Limit	Units	Dilution	Batch	Prepared	Analyzed	Method	Notes
MW-1 (6115015-01) Water									
Benzene	ND	0.00100	mg/L	1	E161906	09/19/06	09/20/06	EPA 8021B	
Toluene	ND	0.00100	"	"	"	"	"	"	
Ethylbenzene	ND	0.00100	"	"	"	"	"	"	
Xylene (p/m)	ND	0.00100	"	"	"	"	"	"	
Xylene (o)	ND	0.00100	"	"	"	"	"	"	
Surrogate: a,a,a-Trifluorotoluene		94.0 %	80-120		"	"	"	"	
Surrogate: 4-Bromofluorobenzene		81.5 %	80-120		"	"	"	"	
MW-2 (6115015-02) Water									
Benzene	ND	0.00100	mg/L	1	E161906	09/19/06	09/20/06	EPA 8021B	
Toluene	ND	0.00100	"	"	"	"	"	"	
Ethylbenzene	ND	0.00100	"	"	"	"	"	"	
Xylene (p/m)	ND	0.00100	"	"	"	"	"	"	
Xylene (o)	ND	0.00100	"	"	"	"	"	"	
Surrogate: a,a,a-Trifluorotoluene		107 %	80-120		"	"	"	"	
Surrogate: 4-Bromofluorobenzene		98.2 %	80-120		"	"	"	"	
MW-3 (6115015-03) Water									
Benzene	ND	0.00100	mg/L	1	E161906	09/19/06	09/20/06	EPA 8021B	
Toluene	ND	0.00100	"	"	"	"	"	"	
Ethylbenzene	ND	0.00100	"	"	"	"	"	"	
Xylene (p/m)	ND	0.00100	"	"	"	"	"	"	
Xylene (o)	ND	0.00100	"	"	"	"	"	"	
Surrogate: a,a,a-Trifluorotoluene		101 %	80-120		"	"	"	"	
Surrogate: 4-Bromofluorobenzene		93.8 %	80-120		"	"	"	"	

Environmental Lab of Texas

The results in this report apply to the samples analyzed in accordance with the samples received in the laboratory. This analytical report must be reproduced in its entirety, with written approval of Environmental Lab of Texas.

Page 2 of 5

Plains All American EH & S
1301 S. County Road 1150
Midland TX, 79706-4476

Project: Saunders 8" #4
Project Number: 2004-00184
Project Manager: Camille Reynolds

Fax: (432) 687-4914

Organics by GC - Quality Control
Environmental Lab of Texas

Analyte	Result	Reporting Limit	Units	Spike Level	Source Result	%REC	%REC Limits	RPD	RPD Limit	Notes
---------	--------	--------------------	-------	----------------	------------------	------	----------------	-----	--------------	-------

Batch EI61906 - EPA 5030C (GC)

Blank (EI61906-BLK1)

Prepared: 09/19/06 Analyzed: 09/20/06

Benzene	ND	0.00100	mg/L							
Toluene	ND	0.00100	"							
Ethylbenzene	ND	0.00100	"							
Xylene (p/m)	ND	0.00100	"							
Xylene (o)	ND	0.00100	"							
Surrogate: a,a,a-Trifluorotoluene	41.7		ug/l	40.0		104	80-120			
Surrogate: 4-Bromofluorobenzene	42.7		"	40.0		107	80-120			

LCS (EI61906-BS1)

Prepared & Analyzed: 09/19/06

Benzene	0.0553	0.00100	mg/L	0.0500		111	80-120			
Toluene	0.0473	0.00100	"	0.0500		94.6	80-120			
Ethylbenzene	0.0437	0.00100	"	0.0500		87.4	80-120			
Xylene (p/m)	0.105	0.00100	"	0.100		105	80-120			
Xylene (o)	0.0506	0.00100	"	0.0500		101	80-120			
Surrogate: a,a,a-Trifluorotoluene	39.9		ug/l	40.0		99.8	80-120			
Surrogate: 4-Bromofluorobenzene	36.7		"	40.0		91.8	80-120			

Calibration Check (EI61906-CCV1)

Prepared: 09/19/06 Analyzed: 09/20/06

Benzene	0.0540		mg/L	0.0500		108	80-120			
Toluene	0.0482		"	0.0500		96.4	80-120			
Ethylbenzene	0.0489		"	0.0500		97.8	80-120			
Xylene (p/m)	0.0966		"	0.100		96.6	80-120			
Xylene (o)	0.0480		"	0.0500		96.0	80-120			
Surrogate: a,a,a-Trifluorotoluene	40.1		ug/l	40.0		100	80-120			
Surrogate: 4-Bromofluorobenzene	43.3		"	40.0		108	80-120			

Matrix Spike (EI61906-MS1)

Source: 6114005-01

Prepared: 09/19/06 Analyzed: 09/20/06

Benzene	0.0597	0.00100	mg/L	0.0500	ND	119	80-120			
Toluene	0.0503	0.00100	"	0.0500	ND	101	80-120			
Ethylbenzene	0.0502	0.00100	"	0.0500	ND	100	80-120			
Xylene (p/m)	0.106	0.00100	"	0.100	ND	106	80-120			
Xylene (o)	0.0511	0.00100	"	0.0500	ND	102	80-120			
Surrogate: a,a,a-Trifluorotoluene	39.8		ug/l	40.0		99.5	80-120			
Surrogate: 4-Bromofluorobenzene	46.6		"	40.0		116	80-120			

Environmental Lab of Texas

The results in this report apply to the samples analyzed in accordance with the samples received in the laboratory. This analytical report must be reproduced in its entirety, with written approval of Environmental Lab of Texas.

Page 3 of 5

Plains All American EH & S
1301 S. County Road 1150
Midland TX, 79706-4476

Project: Saunders 8" #4
Project Number: 2004-00184
Project Manager: Camille Reynolds

Fax: (432) 687-4914

Organics by GC - Quality Control

Environmental Lab of Texas

Analyte	Result	Reporting Limit	Units	Spike Level	Source Result	%REC	%REC Limits	RPD	RPD Limit	Notes
---------	--------	--------------------	-------	----------------	------------------	------	----------------	-----	--------------	-------

Batch EI61906 - EPA 5030C (GC)

Matrix Spike Dup (EI61906-MSD1)

Source: 6114005-01

Prepared: 09/19/06 Analyzed: 09/20/06

Benzene	0.0580	0.00100	mg/L	0.0500	ND	116	80-120	2.55	20	
Toluene	0.0510	0.00100	"	0.0500	ND	102	80-120	0.985	20	
Ethylbenzene	0.0506	0.00100	"	0.0500	ND	101	80-120	0.995	20	
Xylene (p/m)	0.106	0.00100	"	0.100	ND	106	80-120	0.00	20	
Xylene (o)	0.0534	0.00100	"	0.0500	ND	107	80-120	4.78	20	
Surrogate: a,a,a-Trifluorotoluene	40.0		ug/l	40.0		100	80-120			
Surrogate: 4-Bromofluorobenzene	46.0		"	40.0		115	80-120			

Plains All American EH & S
1301 S. County Road 1150
Midland TX, 79706-4476

Project: Saunders 8" #4
Project Number: 2004-00184
Project Manager: Camille Reynolds

Fax: (432) 687-4914

Notes and Definitions

DET Analyte DETECTED
ND Analyte NOT DETECTED at or above the reporting limit
NR Not Reported
dry Sample results reported on a dry weight basis
RPD Relative Percent Difference
LCS Laboratory Control Spike
MS Matrix Spike
Dup Duplicate

Report Approved By:



Date:

9/21/2006

Raland K. Tuttle, Lab Manager
Celey D. Keene, Lab Director, Org. Tech Director
Peggy Allen, QA Officer

Jeanne Mc Murrey, Inorg. Tech Director
LaTasha Cornish, Chemist
Sandra Sanchez, Lab Tech.

This material is intended only for the use of the individual (s) or entity to whom it is addressed, and may contain information that is privileged and confidential.

If you have received this material in error, please notify us immediately at 432-563-1800.

Environmental Lab of Texas
Variance/ Corrective Action Report- Sample Log-In

Client: Plains
 Date/ Time: 9/15/06 1:35
 Lab ID #: 6115015
 Initials: OK

Sample Receipt Checklist

Client Initials

1 Temperature of container/ cooler?	Yes	No	4.0 °C	
2 Shipping container in good condition?	Yes	No		
3 Custody Seals intact on shipping container/ cooler?	Yes	No	Not Present	
4 Custody Seals intact on sample bottles/ container?	Yes	No	Not Present	
5 Chain of Custody present?	Yes	No		
6 Sample instructions complete of Chain of Custody?	Yes	No		
7 Chain of Custody signed when relinquished/ received?	Yes	No		
8 Chain of Custody agrees with sample label(s)?	Yes	No	ID written on Cont./ Lid	
9 Container label(s) legible and intact?	Yes	No	Not Applicable	
10 Sample matrix/ properties agree with Chain of Custody?	Yes	No		
11 Containers supplied by ELOT?	Yes	No		
12 Samples in proper container/ bottle?	Yes	No	See Below	
13 Samples properly preserved?	Yes	No	See Below	
14 Sample bottles intact?	Yes	No		
15 Preservations documented on Chain of Custody?	Yes	No		
16 Containers documented on Chain of Custody?	Yes	No		
17 Sufficient sample amount for indicated test(s)?	Yes	No	See Below	
18 All samples received within sufficient hold time?	Yes	No	See Below	
19 VOC samples have zero headspace?	Yes	No	Not Applicable	

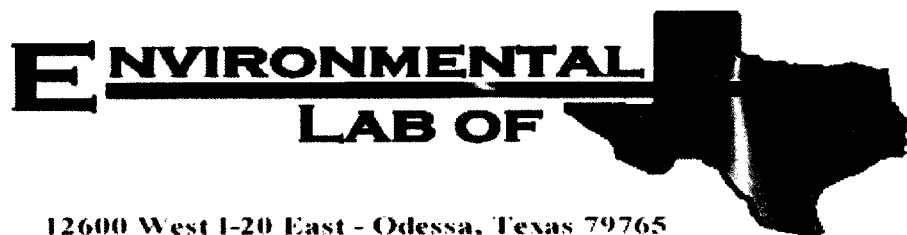
Variance Documentation

Contacted: _____ Contacted by: _____ Date/ Time: _____
 Regarding: _____

Corrective Action Taken: _____

Check all that Apply:

- ☐ See attached e-mail/ fax
- ☐ Client understands and would like to proceed with analysis
- ☐ Cooling process had begun shortly after sampling event



12600 West I-20 East - Odessa, Texas 79765

Analytical Report

Prepared for:

Camille Reynolds

Plains All American EH & S

1301 S. County Road 1150

Midland, TX 79706-4476

Project: Saunders 8" #4

Project Number: 2004-00184

Location: Lea County, NM

Lab Order Number: 6L29010

Report Date: 01/02/07

Plains All American EH & S
1301 S. County Road 1150
Midland TX, 79706-4476

Project: Saunders 8" #4
Project Number: 2004-00184
Project Manager: Camille Reynolds

Fax: (432) 687-4914

ANALYTICAL REPORT FOR SAMPLES

Sample ID	Laboratory ID	Matrix	Date Sampled	Date Received
MW-1	6L29010-01	Water	12/27/06 14:00	12-29-2006 14:00
MW-2	6L29010-02	Water	12/27/06 15:15	12-29-2006 14:00
MW-3	6L29010-03	Water	12/27/06 16:30	12-29-2006 14:00

Plains All American EH & S
1301 S. County Road 1150
Midland TX, 79706-4476

Project: Saunders 8" #4
Project Number: 2004-00184
Project Manager: Camille Reynolds

Fax: (432) 687-4914

Organics by GC
Environmental Lab of Texas

Analyte	Result	Reporting Limit	Units	Dilution	Batch	Prepared	Analyzed	Method	Notes
MW-1 (6L29010-01) Water									
Benzene	I [0.000725]	0.00100	mg/L	1	EL63101	12/31/06	01/01/07	EPA 8021B	
Toluene	I [0.000275]	0.00100	"	"	"	"	"	"	
Ethylbenzene	ND	0.00100	"	"	"	"	"	"	
Xylene (p/m)	ND	0.00100	"	"	"	"	"	"	
Xylene (o)	ND	0.00100	"	"	"	"	"	"	
Surrogate: a,a,a-Trifluorotoluene		89.8 %	80-120		"	"	"	"	
Surrogate: 4-Bromofluorobenzene		85.2 %	80-120		"	"	"	"	
MW-2 (6L29010-02) Water									
Benzene	I [0.000458]	0.00100	mg/L	1	EL63101	12/31/06	12/31/06	EPA 8021B	
Toluene	ND	0.00100	"	"	"	"	"	"	
Ethylbenzene	ND	0.00100	"	"	"	"	"	"	
Xylene (p/m)	ND	0.00100	"	"	"	"	"	"	
Xylene (o)	ND	0.00100	"	"	"	"	"	"	
Surrogate: a,a,a-Trifluorotoluene		95.0 %	80-120		"	"	"	"	
Surrogate: 4-Bromofluorobenzene		98.2 %	80-120		"	"	"	"	
MW-3 (6L29010-03) Water									
Benzene	ND	0.00100	mg/L	1	EL63101	12/31/06	12/31/06	EPA 8021B	
Toluene	ND	0.00100	"	"	"	"	"	"	
Ethylbenzene	ND	0.00100	"	"	"	"	"	"	
Xylene (p/m)	ND	0.00100	"	"	"	"	"	"	
Xylene (o)	ND	0.00100	"	"	"	"	"	"	
Surrogate: a,a,a-Trifluorotoluene		100 %	80-120		"	"	"	"	
Surrogate: 4-Bromofluorobenzene		98.2 %	80-120		"	"	"	"	

Environmental Lab of Texas

The results in this report apply to the samples analyzed in accordance with the samples received in the laboratory. This analytical report must be reproduced in its entirety, with written approval of Environmental Lab of Texas.

Page 2 of 5

Plains All American EH & S
1301 S. County Road 1150
Midland TX, 79706-4476

Project: Saunders 8" #4
Project Number: 2004-00184
Project Manager: Camille Reynolds

Fax: (432) 687-4914

Organics by GC - Quality Control
Environmental Lab of Texas

Analyte	Result	Reporting Limit	Units	Spike Level	Source Result	%REC	%REC Limits	RPD	RPD Limit	Notes
---------	--------	--------------------	-------	----------------	------------------	------	----------------	-----	--------------	-------

Batch EL63101 - EPA 5030C (GC)

Blank (EL63101-BLK1)

Prepared: 12/31/06 Analyzed: 01/01/07

Benzene	ND	0.00100	mg/L							
Toluene	ND	0.00100	"							
Ethylbenzene	ND	0.00100	"							
Xylene (p/m)	ND	0.00100	"							
Xylene (o)	ND	0.00100	"							
Surrogate: a,a,a-Trifluorotoluene	36.1		ug/l	40.0		90.2	80-120			
Surrogate: 4-Bromofluorobenzene	37.0		"	40.0		92.5	80-120			

LCS (EL63101-BS1)

Prepared: 12/31/06 Analyzed: 01/01/07

Benzene	0.0455	0.00100	mg/L	0.0500		91.0	80-120			
Toluene	0.0472	0.00100	"	0.0500		94.4	80-120			
Ethylbenzene	0.0444	0.00100	"	0.0500		88.8	80-120			
Xylene (p/m)	0.0942	0.00100	"	0.100		94.2	80-120			
Xylene (o)	0.0439	0.00100	"	0.0500		87.8	80-120			
Surrogate: a,a,a-Trifluorotoluene	36.2		ug/l	40.0		90.5	80-120			
Surrogate: 4-Bromofluorobenzene	43.5		"	40.0		109	80-120			

Calibration Check (EL63101-CCV1)

Prepared: 12/31/06 Analyzed: 01/01/07

Benzene	48.2		ug/l	50.0		96.4	80-120			
Toluene	49.3		"	50.0		98.6	80-120			
Ethylbenzene	56.4		"	50.0		113	80-120			
Xylene (p/m)	94.8		"	100		94.8	80-120			
Xylene (o)	45.3		"	50.0		90.6	80-120			
Surrogate: a,a,a-Trifluorotoluene	37.8		"	40.0		94.5	80-120			
Surrogate: 4-Bromofluorobenzene	44.1		"	40.0		110	80-120			

Matrix Spike (EL63101-MS1)

Source: 6L29005-01

Prepared: 12/31/06 Analyzed: 01/01/07

Benzene	0.0470	0.00100	mg/L	0.0500	ND	94.0	80-120			
Toluene	0.0473	0.00100	"	0.0500	ND	94.6	80-120			
Ethylbenzene	0.0502	0.00100	"	0.0500	ND	100	80-120			
Xylene (p/m)	0.0959	0.00100	"	0.100	ND	95.9	80-120			
Xylene (o)	0.0441	0.00100	"	0.0500	ND	88.2	80-120			
Surrogate: a,a,a-Trifluorotoluene	35.7		ug/l	40.0		89.2	80-120			
Surrogate: 4-Bromofluorobenzene	42.9		"	40.0		107	80-120			

Environmental Lab of Texas

The results in this report apply to the samples analyzed in accordance with the samples received in the laboratory. This analytical report must be reproduced in its entirety, with written approval of Environmental Lab of Texas.

Page 3 of 5

Plains All American EH & S
1301 S. County Road 1150
Midland TX, 79706-4476

Project: Saunders 8" #4
Project Number: 2004-00184
Project Manager: Camille Reynolds

Fax: (432) 687-4914

Organics by GC - Quality Control
Environmental Lab of Texas

Analyte	Result	Reporting Limit	Units	Spike Level	Source Result	%REC	%REC Limits	RPD	RPD Limit	Notes
Batch EL63101 - EPA 5030C (GC)										
Matrix Spike Dup (EL63101-MSD1)		Source: 6L29005-01		Prepared: 12/31/06 Analyzed: 01/01/07						
Benzene	0.0461	0.00100	mg/L	0.0500	ND	92.2	80-120	1.93	20	
Toluene	0.0485	0.00100	"	0.0500	ND	97.0	80-120	2.51	20	
Ethylbenzene	0.0527	0.00100	"	0.0500	ND	105	80-120	4.88	20	
Xylene (p/m)	0.0978	0.00100	"	0.100	ND	97.8	80-120	1.96	20	
Xylene (o)	0.0458	0.00100	"	0.0500	ND	91.6	80-120	3.78	20	
Surrogate: a,a,a-Trifluorotoluene	37.3		ug/l	40.0		93.2	80-120			
Surrogate: 4-Bromofluorobenzene	42.6		"	40.0		106	80-120			

Environmental Lab of Texas

The results in this report apply to the samples analyzed in accordance with the samples received in the laboratory. This analytical report must be reproduced in its entirety, with written approval of Environmental Lab of Texas.

Page 4 of 5

Plains All American EH & S
1301 S. County Road 1150
Midland TX, 79706-4476

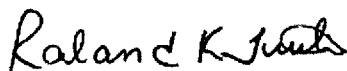
Project: Saunders 8" #4
Project Number: 2004-00184
Project Manager: Camille Reynolds

Fax: (432) 687-4914

Notes and Definitions

DET Analyte DETECTED
ND Analyte NOT DETECTED at or above the reporting limit
NR Not Reported
dry Sample results reported on a dry weight basis
RPD Relative Percent Difference
LCS Laboratory Control Spike
MS Matrix Spike
Dup Duplicate

Report Approved By:



Date:

1/2/2007

Raland K. Tuttle, Lab Manager
Celey D. Keene, Lab Director, Org. Tech Director
Peggy Allen, QA Officer

Jeanne Mc Murrey, Inorg. Tech Director
LaTasha Cornish, Chemist
Sandra Sanchez, Lab Tech.

This material is intended only for the use of the individual (s) or entity to whom it is addressed, and may contain information that is privileged and confidential.

If you have received this material in error, please notify us immediately at 432-563-1800.

CHAIN OF CUSTODY RECORD AND ANALYSIS REQUEST

12600 West I-20 East
Odessa, Texas 79785

Phone: 432-563-1800
Fax: 432-563-1713

Ken Dutton

Basin Environmental Service Technologies, LLC

PO#: PAA - C. J. Reynolds

Fax No: (505) 396-1429

kad@basinenv.com

ORDER # 6629010

[illegible]

Special Instructions:

Reference:



17 Jan 1968

Reinforced by:

James A. Smith

10/10/19

Laboratory Comments:

Sample Containers Intact?

VOCs. Free of Headspace?

Labels on container(s)

Custody seals on container

Custom seals on cooler (5)
Sample Hand Delivered

by Sampler/Client Rep.

by Courier? UPS

Temperature 11mm Recept...

1. **Introduction**

100

Environmental Lab of Texas
Variance/ Corrective Action Report- Sample Log-In

Client: Plains P/L / Basin Env.
 Date/ Time: 12-29-06 @ 1400
 Lab ID #: 6L29010
 Initials: JMM

Sample Receipt Checklist

Client Initials

#1 Temperature of container/ cooler?	<input checked="" type="radio"/> Yes	<input type="radio"/> No	0.0 °C	
#2 Shipping container in good condition?	<input checked="" type="radio"/> Yes	<input type="radio"/> No		
#3 Custody Seals intact on shipping container/ cooler?	<input checked="" type="radio"/> Yes	<input type="radio"/> No	Not Present	
#4 Custody Seals intact on sample bottles/ container?	<input checked="" type="radio"/> Yes	<input type="radio"/> No	Not Present	
#5 Chain of Custody present?	<input checked="" type="radio"/> Yes	<input type="radio"/> No		
#6 Sample instructions complete of Chain of Custody?	<input checked="" type="radio"/> Yes	<input type="radio"/> No		
#7 Chain of Custody signed when relinquished/ received?	<input checked="" type="radio"/> Yes	<input type="radio"/> No		
#8 Chain of Custody agrees with sample label(s)?	<input checked="" type="radio"/> Yes	<input type="radio"/> No	ID written on Cont./ Lid	
#9 Container label(s) legible and intact?	<input checked="" type="radio"/> Yes	<input type="radio"/> No	Not Applicable	
#10 Sample matrix/ properties agree with Chain of Custody?	<input checked="" type="radio"/> Yes	<input type="radio"/> No		
#11 Containers supplied by ELOT?	<input checked="" type="radio"/> Yes	<input type="radio"/> No		
#12 Samples in proper container/ bottle?	<input checked="" type="radio"/> Yes	<input type="radio"/> No	See Below	
#13 Samples properly preserved?	<input checked="" type="radio"/> Yes	<input type="radio"/> No	See Below	
#14 Sample bottles intact?	<input checked="" type="radio"/> Yes	<input type="radio"/> No		
#15 Preservations documented on Chain of Custody?	<input checked="" type="radio"/> Yes	<input type="radio"/> No		
#16 Containers documented on Chain of Custody?	<input checked="" type="radio"/> Yes	<input type="radio"/> No		
#17 Sufficient sample amount for indicated test(s)?	<input checked="" type="radio"/> Yes	<input type="radio"/> No	See Below	
#18 All samples received within sufficient hold time?	<input checked="" type="radio"/> Yes	<input type="radio"/> No	See Below	
#19 Subcontract of sample(s)?	<input checked="" type="radio"/> Yes	<input type="radio"/> No	Not Applicable	
#20 VOC samples have zero headspace?	<input checked="" type="radio"/> Yes	<input type="radio"/> No	Not Applicable	

Variance Documentation

Contact: _____ Contacted by: _____ Date/ Time: _____

Regarding: _____

Corrective Action Taken:

Check all that Apply:

- ☐ See attached e-mail/ fax
☐ Client understands and would like to proceed with analysis
☐ Cooling process had begun shortly after sampling event

District I
1625 K. French Dr., Hobbs, NM 88240
District II
1301 W. Grand Avenue, Artesia, NM 88210
District III
1000 Rio Brazos Road, Aztec, NM 87410
District IV
1220 S. St. Francis Dr., Santa Fe, NM 87505

State of New Mexico
Energy Minerals and Natural Resources

Oil Conservation Division
1220 South St. Francis Dr.
Santa Fe, NM 87505

Form C-141
Revised October 10, 2003

Submit 2 Copies to appropriate
District Office in accordance
with Rule 116 on back
side of form

Release Notification and Corrective Action

OPERATOR

☒ Initial Report ☐ Final Report

Name of Company Plains Marketing, LP	Contact Camille Reynolds	
Address 5805 East Hwy. 80, Midland, TX 79706	Telephone No. 505-441-0965	
Facility Name Saunders 8" #4	Facility Type 8" Steel Pipeline	
Surface Owner Norman Hahn	Mineral Owner	Lease No.

LOCATION OF RELEASE

Unit Letter F	Section 35	Township 13S	Range 33E	Feet from the	North/South Line	Feet from the	East/West Line	County Lea
------------------	---------------	-----------------	--------------	---------------	------------------	---------------	----------------	---------------

Latitude 33°08'55.6" Longitude 103°35'15.3"

NATURE OF RELEASE

Type of Release Crude Oil	Volume of Release 15 barrels	Volume Recovered 0 barrels
Source of Release 8" Steel Pipeline	Date and Hour of Occurrence 8-12-04 @ 06:00	Date and Hour of Discovery 8-12-04 @ 13:45
Was Immediate Notice Given? <input checked="" type="checkbox"/> Yes <input type="checkbox"/> No <input type="checkbox"/> Not Required	If YES, To Whom? Larry Johnson	
By Whom? Camille Reynolds	Date and Hour 8-12-04 @ 19:00	
Was a Watercourse Reached? <input type="checkbox"/> Yes <input checked="" type="checkbox"/> No	If YES, Volume Impacting the Watercourse.	

If a Watercourse was Impacted, Describe Fully.*

Describe Cause of Problem and Remedial Action Taken.* External corrosion of the 8" steel pipeline. A line clamp was installed to mitigate the release. The line is an 8 inch steel transmission pipeline that produces approximately 1,400 barrels of crude per day. The pressure on the line varies from 25 to 30 psi and the gravity of the sweet crude oil is 38-42. The sweet crude has an H₂S content of less than 10 ppm

Describe Area Affected and Cleanup Action Taken.* The impacted soil was excavated and stockpiled on plastic. Aerial extent of surface impact was 7,176 ft².

I hereby certify that the information given above is true and complete to the best of my knowledge and understand that pursuant to NMOCD rules and regulations all operators are required to report and/or file certain release notifications and perform corrective actions for releases which may endanger public health or the environment. The acceptance of a C-141 report by the NMOCD marked as "Final Report" does not relieve the operator of liability should their operations have failed to adequately investigate and remediate contamination that pose a threat to ground water, surface water, human health or the environment. In addition, NMOCD acceptance of a C-141 report does not relieve the operator of responsibility for compliance with any other federal, state, or local laws and/or regulations.

Signature: <u>Camille Reynolds</u>		OIL CONSERVATION DIVISION	
Printed Name: Camille Reynolds		Approved by District Supervisor:	
Title: Remediation Coordinator		Approval Date:	Expiration Date:
E-mail Address: cgreynolds@psalp.com		Conditions of Approval:	
Date: 8-17-04 Phone: 505-441-0965		Attached <input type="checkbox"/>	

Attach Additional Sheets If Necessary