

*Just
NSL 470
issue upon
OK from
after office
topog
Emery says to go ahead
George*

BENSON-MONTIN-GREER DRILLING CORP.

221 PETROLEUM CENTER BUILDING
FARMINGTON, NEW MEXICO 87401
PHONE: 325-8874

70 AUG 4 AM 7 59

July 28, 1970

New Mexico Oil Conservation Commission
P.O. Box 2088
Santa Fe, New Mexico 87501

Attn: Mr. A.L. Porter, Jr.
Secretary-Director

RE: UNORTHODOX LOCATION FOR PICTURED CLIFFS
WILDCAT IN THE SW $\frac{1}{4}$ OF SECTION 27, TOWN-
SHIP 26 NORTH, RANGE 1 WEST, CANADA
OJITOS UNIT, RIO ARRIBA COUNTY, N.M.

Gentlemen:

Benson-Montin-Greer Drilling Corp. as the Unit Operator of the Canada Ojitos Unit proposes to drill a Pictured Cliffs test well in the SW $\frac{1}{4}$ of Section 27, Township 26 North, Range 1 West, Rio Arriba County, New Mexico. Because of the rough terrain in this area we request the Conservation Commission approval to drill this well in an unorthodox location.

The location which we are requesting is 1190 feet from the South line and 375 feet from the West line of Section 27. A plat of the proposed location and a plat showing the topography are enclosed for your information,

All leases on the land within one mile of our proposed location have been committed to the Canada Ojitos Unit.

BENSON-MONTIN-GREER DRILLING CORP.

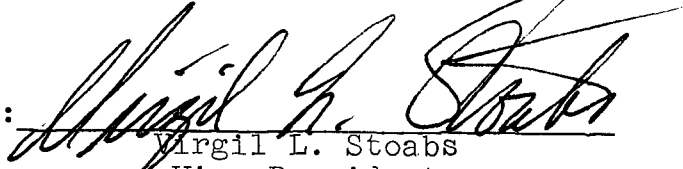
New Mexico Oil Conservation Commission
July 28, 1970
Page 2

We respectfully request approval of the New Mexico Oil Conservation Commission for the drilling of our proposed unorthodox location.

Yours very truly,

BENSON-MONTIN-GREER DRILLING CORP.

BY:

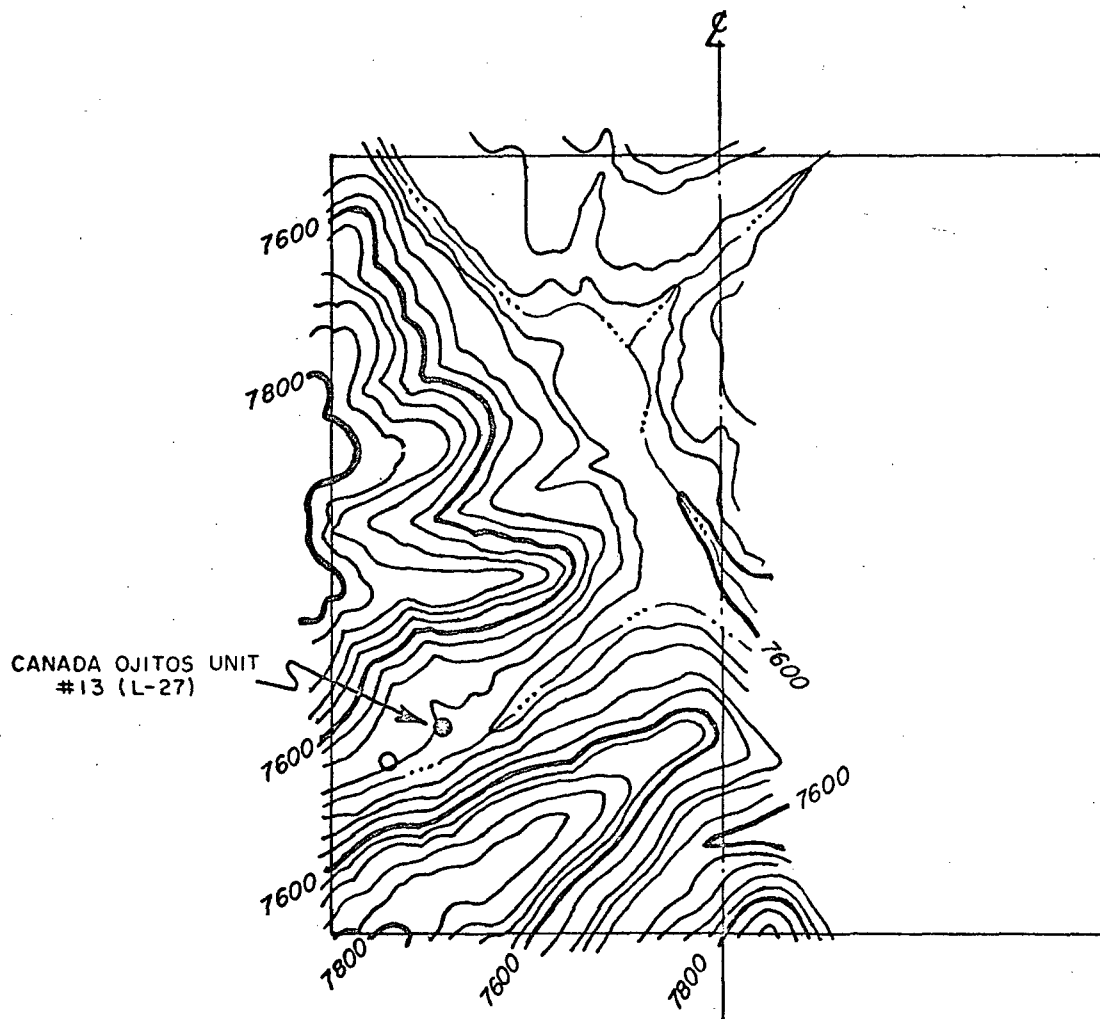

Virgil L. Stoabs
Vice-President

VLS:ld

Encls.

cc: N.M. Oil Cons. Commission
Aztec Office

U.S.G.S.
Durango Office



TOPOGRAPHIC MAP
of
W1/2 SEC. 27, T26N-R1W
Rio Arriba County, New Mexico
SHOWING PROPOSED LOCATION
BENSON-MONTIN-GREER
CANADA OJITOS UNIT #15 (M-27)
1190' FSL
375' FWL
JULY, 1970
SCALE: 4" = 1 Mi.

All distances must be from the outer boundary of the Section

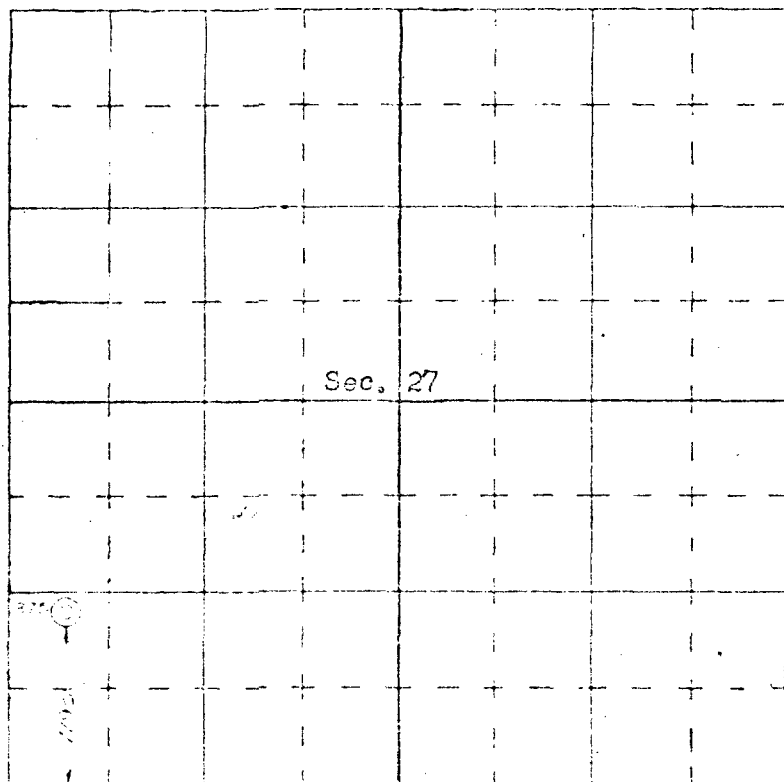
M	27	26 NORTH	1 WEST	RIO ABRIOLA
1190		SOU H	375	WEST
7456.0				

I hereby certify that the information contained herein is true and complete to the best of my knowledge and belief.

I hereby certify that the well location shown on this plat was plotted from field notes of actual surveys made by me or under my supervision, and that the same is true and correct to the best of my knowledge and belief.

19 June, 1970

1463



SCALE--1 INCHES EQUALS 1 MILE

SAN JUAN ENGINEERING COMPANY, FARMINGTON, N. M.