

*518 (2 wells)  
issue upon  
receipt of requested  
info -*

TESORO PETROLEUM CORPORATION

8520 CROWNHILL

512-824-0261

SAN ANTONIO, TEXAS 78209

RECEIVED

AUG 26 1971

NIL CONSERVATION COMM

August 24, 1971

Mr. A. L. Porter, Jr.  
Secretary-Director  
New Mexico Oil Conservation Commission  
PO Box 2088  
Santa Fe, New Mexico 87501

Dear Mr. Porter:

Attached hereto are copies of Forms C-101 and C-102 covering our applications for permit to drill our Wells No. 4-Y and 11-Y in the Hospah Sand Unit, McKinley County, New Mexico.

It will be noted that these applications are for unorthodox locations and pursuant to Order No. R-2807-B, dated December 3, 1969, we are herewith requesting administrative approval for these unorthodox locations.

Best personal regards.

Yours very truly,

*R. H. Denman*

R. H. Denman

Manager of Production Engineering

RHD/rw

Attachments

cc: Emery Arnold

NO. OF COPIES RECEIVED	
DISTRIBUTION	
SANTA FE	
FILE	
U.S.G.S.	
LAND OFFICE	
OPERATOR	

NEW MEXICO OIL CONSERVATION COMMISSION

**RECEIVED**  
AUG 26 1971

Form C-101  
Revised 1-4-65

5A. Indicate Type of Lease  
STATE ☐ FEE ☒  
5. State Oil & Gas Lease No.

APPLICATION FOR PERMIT TO DRILL, DEEPEN, OR PLUG BACK

1a. Type of Work b. Type of Well OIL WELL <input checked="" type="checkbox"/> GAS WELL <input type="checkbox"/> OTHER <input type="checkbox"/> SINGLE ZONE <input checked="" type="checkbox"/> MULTIPLE ZONE <input type="checkbox"/>		7. Unit Agreement Name Hospah Unit	
2. Name of Operator Tesoro Petroleum Corporation		8. Farm or Lease Name -	
3. Address of Operator 8520 Crownhill Blvd., San Antonio, Texas 78209		9. Well No. 4-Y	
4. Location of Well UNIT LETTER C LOCATED 530 FEET FROM THE North LINE AND 2560 FEET FROM THE West LINE OF SEC. 1 TWP. 17N RGE. 9W NMPM		10. Field and Pool, or Wildcat Upper Hospah Sand Unit	
12. County McKinley			
19. Proposed Depth 1590'		19A. Formation Hospah	
20. Rotary or C.T. Rotary			
21. Elevations (Show whether DF, RT, etc.) 6950' GL	21A. Kind & Status Plug. Bond Blanket	21B. Drilling Contractor Aztec Well Servicing	22. Approx. Date Work will start Aug. 20, 1971

23.

PROPOSED CASING AND CEMENT PROGRAM

SIZE OF HOLE	SIZE OF CASING	WEIGHT PER FOOT	SETTING DEPTH	SACKS OF CEMENT	EST. TOP
12 1/4"	8-5/8"	24.0	60'	50 sx	Circulate
7-7/8"	5 1/2"	14.0	1550'	150 sx	880'
4-3/4"	Open Hole	To	1590'		

We propose to drill a 12 1/4" surface hole and set 60' - 8-5/8" surface pipe. We will drill to 1550' and run an electric log. We will set 5 1/2" casing in the top of the Upper Hospah sand. We will then deepen and complete open hole in the Upper Hospah sand as a producer in the unit waterflood.

IN ABOVE SPACE DESCRIBE PROPOSED PROGRAM: IF PROPOSAL IS TO DEEPEN OR PLUG BACK, GIVE DATA ON PRESENT PRODUCTIVE ZONE AND PROPOSED NEW PRODUCTIVE ZONE. GIVE BLOWOUT PREVENTER PROGRAM, IF ANY.

I hereby certify that the information above is true and complete to the best of my knowledge and belief.

Signed K.H. Zimmerman Title Mgr. Prod. Engr. Date August 12, 1971

(This space for State Use)

APPROVED BY \_\_\_\_\_ TITLE \_\_\_\_\_ DATE \_\_\_\_\_

CONDITIONS OF APPROVAL, IF ANY:

NEW MEXICO OIL CONSERVATION COMMISSION  
WELL LOCATION AND ACREAGE DEDICATION PLAT

Form C-102  
Supersedes C-12  
Effective 1-1-65

RECEIVED  
AUG 20 1971

All distances must be from the outer boundaries of the Section.

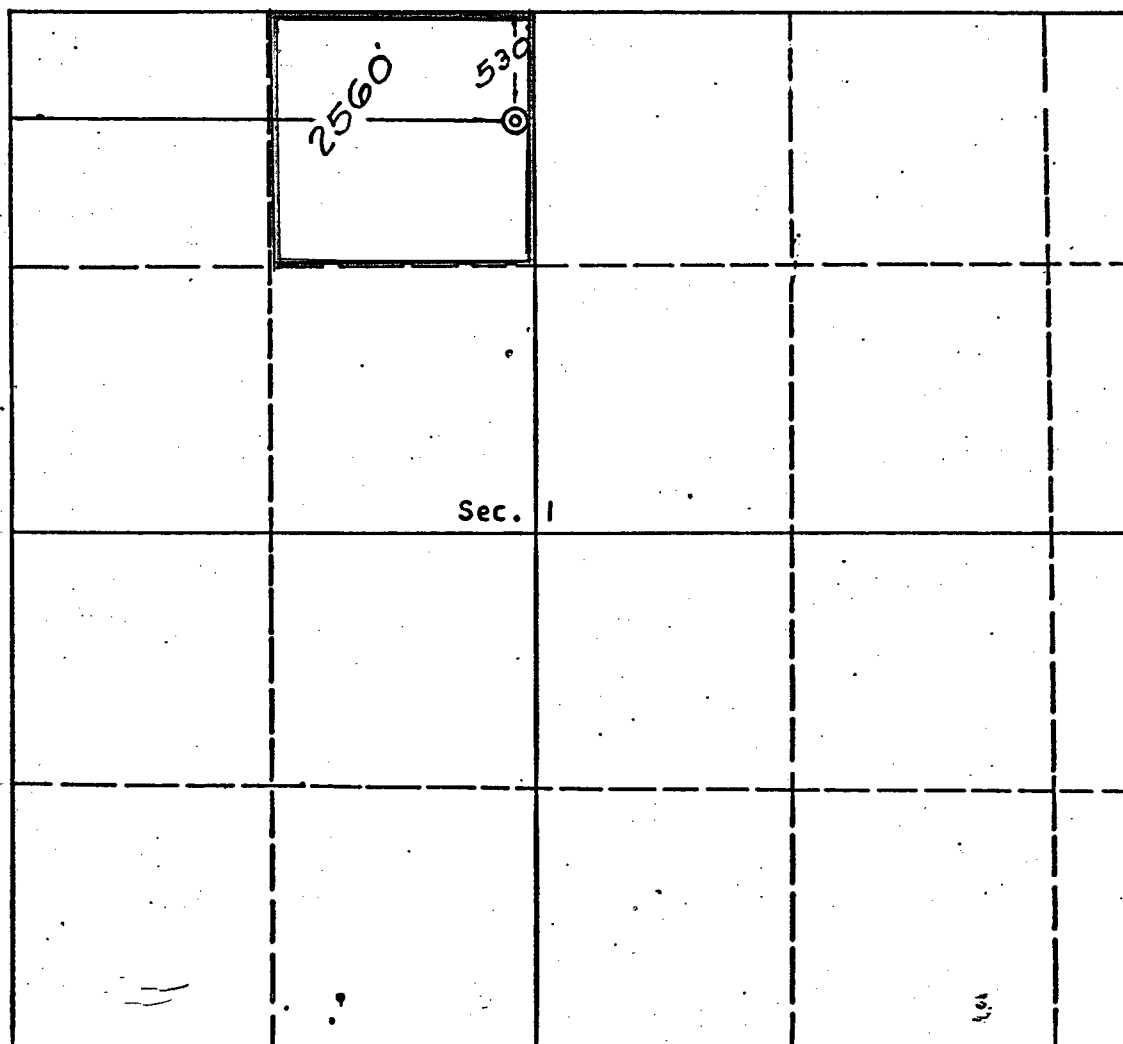
Operator <b>Tesoro Petroleum Corporation</b>			Lease <b>Sand Unit</b>		Well No. <b>4-X</b>
Unit Letter <b>C</b>	Section <b>1</b>	Township <b>17 North</b>	Range <b>9 West</b>	County <b>McKinley</b>	
Actual Footage Location of Well: <b>530</b> feet from the <b>North</b> line and <b>2560</b> feet from the <b>West</b> line					
Ground Level Elev. <b>6950</b>	Producing Formation <b>Hospah</b>		Pool <b>Hospah - Upper Sand</b>		Dedicated Acreage: Acres

1. Outline the acreage dedicated to the subject well by colored pencil or hatchure marks on the plat below.
2. If more than one lease is dedicated to the well, outline each and identify the ownership thereof (both as to working interest and royalty).
3. If more than one lease of different ownership is dedicated to the well, have the interests of all owners been consolidated by communitization, unitization, force-pooling, etc?

☒ Yes ☐ No If answer is "yes," type of consolidation Unitization

If answer is "no," list the owners and tract descriptions which have actually been consolidated. (Use reverse side of this form if necessary.)

No allowable will be assigned to the well until all interests have been consolidated (by communitization, unitization, forced-pooling, or otherwise) or until a non-standard unit, eliminating such interests, has been approved by the Commission.



CERTIFICATION

I hereby certify that the information contained herein is true and complete to the best of my knowledge and belief.

Name  
**R. H. Denman**  
Position  
**Mgr. of Production Engineer**  
Company  
**TESORO PETROLEUM CORPORATION**

Date  
**August 20, 1971**

REGISTERED LAND SURVEYOR  
STATE OF NEW MEXICO  
I hereby certify that the location of this plat was plotted in the field by actual survey's made on or after 7/23/62 and that the same are correct to the best of my knowledge.  
**ERNEST V. ECHOHAWK**

Date Surveyed  
**August 8, 1971**  
Registered Professional Engineer and/or Land Surveyor

**E. V. Echohawk**  
Certificate No. **3602**  
**E. V. Echohawk**

TESORO PETROLEUM CORPORATION

8520 CROWN HILL

512-824-0261

SAN ANTONIO, TEXAS 78209

August 27, 1971

RECEIVED  
AUG 30 1971

10 607 1111 11 11

Mr. A. L. Porter, Jr.  
Secretary - Director  
New Mexico Oil Conservation Commission  
PO Box 2088  
Santa Fe, New Mexico 87501

SUBJ: Unorthodox Locations  
Hospah Sand Unit No. 4-Y and No. 11-Y  
McKinley County, New Mexico

Dear Mr. Porter:

As discussed with Mr. George Hatch by telephone this date, and in further compliance with Order No. R-2807-B regarding the subject unorthodox locations, we are attaching a copy of a plat showing the outline of the Hospah Sand Unit. The unorthodox locations in question are indicated by red circles.

These locations will replace Wells No. 4 and No. 11 in the Hospah Sand Unit which have gone to high water-oil ratio, and as such, should not substantially change the previous flood pattern. Injection wells in this waterflood project are indicated by blue circles. In addition to this information, it should be noted that these are inside locations and, consequently, no offset operators are involved.

We believe that this should satisfy all requirements set forth in Order No. R-2807-B, and we would appreciate your verbal permission by a collect telephone call to the undersigned as soon as possible inasmuch as we will have a rig ready to move on the No. 11-Y location in the very near future.

Best regards.

Yours very truly,

*R. H. Denman*

R. H. Denman  
Manager of Production Engineering

RHD/rw  
Attachment  
Copy to Emery Arnold, NMOCC

OIL CONSERVATION COMMISSION

P. O. BOX 2088

SANTA FE, NEW MEXICO 87501

*issue 8-30-71*

August 26, 1971

*Order (2) of  
Order No. R-2807, as amended,*

Tesoro Petroleum Corporation  
8520 Crownhill  
San Antonio, Texas 78209

Attention: Mr. R. H. Denman

Re: Application for Administrative  
approval for unorthodox locations  
for Wells Nos. 4-Y and 11-Y,  
Hospah Upper Sand Oil Pool,  
McKinley County, New Mexico

Gentlemen:

Please furnish this office a plat showing  
the unit outline and the location of production  
and injection wells in order that the Secretary-  
Director can determine that the wells are neces-  
sary to complete an efficient producing pattern.

Very truly yours,

GEORGE M. HATCH  
Attorney

GMH/dr

C  
O  
P  
Y